

Kent & Medway Mental Health NHS Trust Charitable Fund

England & Wales · Charity number 1202262

Details

| | |
|-------------|--|
| Other names | KENT AND MEDWAY NHS SOCIAL CARE PARTNERSHIP TRUST CHARITABLE FUND, HEALTH, HEART, HOPE @KMPT, Health, Heart, Hope @ KMMH |
| Status | Registered |
| Legal form | Trust |
| Registered | 2023-03-09 |
| Register | View on the Charity Commission register |

Contact

Address Kent & Medway NHS Partnership
Priority House
Hermitage Lane
Maidstone
ME16 9PH

Phone 07707153706

Email kmpt.charity@nhs.net

Website www.kmpt.nhs.uk

Activities

Objects: FOR ANY CHARITABLE PURPOSE FOR THE BENEFIT OF SERVICE USERS, CARERS AND STAFF RELATING TO THE NATIONAL HEALTH SERVICE (INCLUDING RESEARCH), WHOLLY OR INCIDENTALLY RELATED TO THE DELIVERY OF SERVICES PROVIDED BY KENT AND MEDWAY NHS SOCIAL CARE PARTNERSHIP TRUST.

Activities: We support the work of Kent and Medway NHS Social Care Partnership Trust, for any charitable purpose for the benefit of service users, carers, and staff relating to NHS service, including research.

Classification

- **How:** Makes Grants To Individuals, Makes Grants To Organisations, Provides Services, Sponsors Or Undertakes Research
- **What:** General Charitable Purposes, Disability
- **Who:** Children/young People, Elderly/old People, People With Disabilities, People Of A Particular Ethnic Or Racial Origin, The General Public/mankind

Geography

- Kent

Finances

| Period end | Income | Expenditure | Assets | Employees |
|------------|---------|-------------|--------|-----------|
| 2025-03-31 | £19,804 | £36,369 | - | - |
| 2024-03-31 | £63,198 | £23,285 | - | - |

Trustees

| Name | Role | Appointed |
|---|------|------------|
| Kent and Medway NHS and Social Care Partnership Trust | | 2022-08-18 |

Kent & Medway Mental Health NHS Trust Charitable Fund

England & Wales - Charity number 1202262

Accounts

Kent & Medway NHS & Social Care
Partnership Trust Charitable Fund



Report and Accounts

for the year ended 31 March 2024

Registered Charity Number 1202262



Contents

- 03 Foreword from KMPT's Chair and CEO
- 04 2023/24 Key Highlights
- 05 The Role of the Charity
- 06 Case studies
- 08 Financial Overview & Fund Structure
- 09 Management Structure
- 10 Charity Information
- 11 Statement of Corporate Trustee Responsibilities
- 12 Independent Examiner's Report
- 13 Accounts
- 14 Foreword
- 15 Structure
- 16 Statement of Financial Activities
- 17 Balance Sheet
- 18 Notes to the financial statements for the year ending 31 March 2024

Foreword from KMPT Chair Jackie Craissati and KMPT CEO Sheila Stenson



Jackie Craissati
KMPT Chair



Sheila Stenson
KMPT CEO

The Trustee presents their annual report and the independently examined financial statements for the year ended 31 March 2024.

The Charity was founded in 2022 with a clear mission to enhance mental health services by identifying and funding projects, ideas, and equipment that improve the experiences of our patients, families, and carers while offering vital support to staff, particularly around their wellbeing. Since our inception, we've made encouraging progress on this journey, though we recognise the need to grow our fundraising efforts to fully realise our ambitions for those we support.

Launching a charity during a challenging economic climate, with rising costs and increased competition for donations, was never going to be easy. Nevertheless, over the past year, we have made meaningful progress by unlocking its full potential. Over the past year, we have made meaningful progress by laying strong foundations for the future. This includes developing a three-year strategy, recruiting experienced charity professionals, and prioritising engagement, income generation, and impactful projects. However, we recognise the need to grow our fundraising efforts to fully realise our ambitions for those we support.

On behalf of the Board, we would like to say a huge thank you to all our staff, supporters and volunteers for their incredible support, dedication, and fundraising efforts. Your contributions to wellbeing activities, volunteer days, and fundraising events have already made a real difference. A special thank you to our Pharmacist team for taking on the Canterbury Cycle Ride and to our Carers Leads and Dementia teams for their outstanding fundraising. Your hard work and passion continue to inspire us and drive our mission forward. Examples of how funds have been used are outlined in this report, and we are proud to have used our resources wisely while setting the charity up for long-term success.

Looking ahead, we are excited to grow and develop the charity further. Our focus will be on finding sustainable funding solutions, raising awareness of our mission, and inspiring more people to support our work. We are optimistic about the year to come and are confident in our ability to fund initiatives that will improve lives across Kent and Medway.

Warm wishes

Jackie and Sheila

2023/24

Key Highlights



£4,140

raised by Webb's Charity Garden through therapeutic gardening sessions and sales of homegrown produce grown by patients and volunteers.

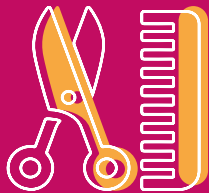
£1,500

grant from Barchester Health funded the creation of a wellbeing garden at Ethelbert Ward, Canterbury, providing a calming space for patients.



We funded an upcycling project at Rivendell Rehabilitation Unit, Eastry, a 10-bed inpatient unit for adults with complex mental health needs. Patients and staff worked together to upcycle items and sell them, supporting their projects and services.

We arranged and funded specialist on-ward hairdressing services for Afro-Caribbean patients who were unable to leave the wards, ensuring their dignity and wellbeing.



4

KMPT pharmacists took part in the Canterbury Cycle Race, raising funds to support our work.



Over **£3,000**

worth of raffle prizes were secured as we celebrated the NHS's 75th anniversary with a raffle and events across the Trust. More than 42 Charity Champions sold tickets, raising awareness and support.

£311.96

was raised by Webb's Open Garden Day in May, supported by Moreton Ltd, Taylor Wimpey, and KCC. The event welcomed hundreds of visitors, with free goodie bags for the first 30 attendees.



We provided vital support to patients, staff, and carers, including donating a computer tablet to a dementia patient and distributing underwear donated by Asda to those experiencing hardship.

The Role of the Charity

Our 2023 - 2026 Objectives



Care & Support

- We facilitate support and transformation for our patients and aid for our dedicated NHS staff



Communications & Fundraising

- We will work to raise the profile of our charity to all across Kent & Medway
- We aim to inspire greater support by communicating about the people and projects we fund and the impact they make
- We will fundraise for and seek funding for projects that the NHS is unable to fund



Interface with our Communities

- We aim to improve the awareness of mental health through our charitable activities
- We will facilitate greater understanding of mental health with our corporate & other sponsors



Research & Innovation

- We will seek funding to support high quality and innovative research that enhances our understanding of mental health, learning disabilities and autism with the aim to improve lives across Kent & Medway
- We will support through funding innovations in mental health practice

2023/24 Case Studies

Green Spaces

Funding from Snodland Town Council, raised through the 2023 Christmas lights collection and carnival, made a new therapeutic garden at Orchards Ward possible. This 16-bed unit supports older adults with acute mental health needs.

The project, led by the Trust's Carers Lead and Art Therapist, created a safe, sensory space where patients designed, gardened, and maintained the area. The garden encouraged social interaction, skill-building, and rehabilitation while offering a peaceful space for reflection and group activities.

With sustainable planting, including herbs, fruit, and vegetables, the project helped patients, staff, and volunteers build confidence, connect with others, and support recovery.



Engaging Communities

A key focus for the charity is engaging with our community and supporters to help deliver meaningful projects. Corporate volunteers play a vital role in improving access to our cherished green spaces, which provide therapeutic and restful environments for patients and staff.

In the first week of August, a team from Blu-3 joined us to tackle the weeding of flowerbeds and green areas at Webb's Garden and Ethelbert Road. The task was no small feat, but the team rose to the challenge, and their hard work made a noticeable difference, transforming the gardens into more welcoming spaces for everyone to enjoy. We are incredibly grateful for their support.



Dementia

During 2023, the charity team attended events across Kent and Medway to raise awareness of our dementia services, groups and charity. This was an incredibly rewarding experience for the charity, and helped reach more supporters and raise over £400 to support our Dementia groups.



Financial Overview and Fund Structure

The charity works closely with sustainability, wellbeing and clinical leads to identify and deliver on its 3-year objectives.

All fundraising is conducted by supporters of the charity and in accordance with the KMPT Fundraising Policy and Cash Handling Procedure. The charity is fully aware of its requirements to make sure vulnerable people are protected, including safeguarding and information governance training. The charity received start-up funding from KMPT for salaries and marketing materials. The remainder of our income came from grant funders and the generosity and efforts of philanthropic people. At the end of financial year, the charity's total funds held were **£42,373**. It did not receive any legacy, investment or endowment income during the period but it is planned that this will come with increased marketing activity next year. The charity works closely with sustainability, wellbeing and clinical leads to identify and deliver on its 3-year objectives.

Fund Structure & Definition of Funds

The Corporate Trustee reviews the balances held in designated funds to determine whether these funds are likely to be committed in the near future and the extent to which there is a continuing need identified for any particular fund(s). In the event that the need no longer exists those funds will be transferred to the General Fund. Further rationalisation will occur if designated funds are no longer financially viable or have a similar object to another unrestricted fund.

RESTRICTED

funds which are subject to specific trusts e.g. terms of will or a grant

ENDOWMENT

held as capital and only the income generated can be expended

DESIGNATED

where the charity has set the money aside for a particular purpose but it remains unrestricted and can be redesignated or undesignated at any time

UNRESTRICTED

are expendable at the discretion of the Trustees and can be designated

Management Structure

The Charitable Funds Committee delegate operational delivery of the charity to the Charity Lead. Charity Start-Up core costs have been sponsored by KMPT whilst we move towards being self-funding. The Charity Lead receives professional advice from the Charity Operational Delivery Group who meet monthly. In March 2023 Health, Heart, Hope became a registered Charity with the Charities Commission, meaning it can now receive Charity law advice and training for Corporate Trustee. The Charity also benefited from the NHS Charities Together membership support services including support, networking and information services.

Sean Bone-Knell

Chair of the Charitable Funds Committee and Non-Executive Director

Appointed to CFC 30th April 2024

Nick Brown

Charitable Funds Committee Member and Chief Finance and Resources Officer

Appointed to CFC in current role September 2024

Dr Mary- Ann Ferreux

Non-Executive Director, and Charitable Funds Committee

Appointed to CFC 30th April 2024

Kim Lowe

Non-Executive Director, and Charitable Funds Committee Member

Appointed to CFC 30th April 2024

Dr Adrian Richardson

Charitable Fund Committee Senior Responsible Officer and Director of Partnerships and Transformation

Appointed to CFC 20th April 2024

Charity Information

Reserves Policy

The Corporate Trustee recognises their obligation to ensure that income received by the charity should be spent effectively and promptly in accordance with the fund's objectives.

The Charity Commission recommends that registered charities hold at least 3 months operating costs in an interest-bearing account as a contingency fund. As the charity becomes established and income increases the charity will move towards holding this level of reserves.

The Charity does not have any formal reserves, however, it does have enough within its funds to continue to pay a proportion of NHS staff time to manage the charity. There is enough money held on account within the funds to ensure that other costs, such as examination fees, are covered. Other spending activities are only authorised when full funding is available.

Grant Making Policy

The charity can make grants from its funds under the terms of its policy which has been consulted on by staff for over 6 months and approved by Charity Commission as compliant with Charity Law. This will be published on KMPT's internal intranet to support KMPT staff to make applications to the Charity Lead with any requests over £5,000 being referred to the Charity Funds Committee for scrutiny.

Governance

The members of the KMPT Trust Board form the Corporate Trustee who meet annually to review the annual report and accounts. They delegate responsibility to the Charitable Funds Committee who meet quarterly to scrutinise the actions of the Charity Operational Delivery Group and review applications for funding over £5,000. None of the Trustees received reimbursements or remuneration from the charity for either their work or expenses incurred in this financial year whilst undertaking their responsibilities for the charity.

Statement of Corporate Trustee responsibilities

The Corporate Trustee is responsible for preparing a Trustee's Annual Report and the financial statements in accordance with applicable law and regulations. The Corporate Trustee is required to prepare the financial statements in accordance with UK Accounting Standards, including Charities SORP FRS102 The Financial Reporting Standard applicable in the UK and Republic of Ireland. The financial statements are required by law to give a true and fair view of the state of affairs of the charity and of the incoming resources for that period. In preparing these financial statements generally accepted accounting practice entails that the trustee:

- Selects suitable accounting policies and then apply them consistently
- Makes judgements and estimates that are reasonable and prudent
- States whether the recommendations of the Statement of Recommended Practice have been followed, subject to any material departures disclosed and explained in the financial statements
- States whether the financial statements comply with the Trust Deed, subject to any material departures disclosed and explained in the financial statements
- Assess the charity's ability to continue as a going concern, disclosing, as applicable, matters related to going concern and uses the going concern basis of accounting unless they either intend to liquidate the charity or to cease operations, or have no realistic alternative but to do so.

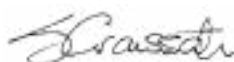
The Trustee is required to act in accordance with the Trust Deed of the Charity, within the framework of trust law. It is responsible for keeping accounting records which are sufficient to show and explain the charity transactions and disclose at any time, with reasonable accuracy, the financial position of the charity at that time, and to enable the Trustee to ensure that, where any statements of accounts are prepared by them under Section 132(1) of the Charities Act 2011, those statements of accounts comply with the requirements of regulations under that provision. It is responsible for such internal control as it determines is necessary to enable the preparation of financial statements that are free from material misstatement, whether due to fraud or error, and has general responsibility for taking such steps as are reasonably open to them to safeguard the assets of the charity and to prevent and detect fraud and other irregularities.

On behalf of the Trustees

Jackie Craissati

KMPT Chair

Date: 24 January 2025



Sheila Stenson

KMPT CEO

Date: 24 January 2025



Independent Examiner's Report to the Trustees of Kent and Medway NHS & Social Care Partnership Trust Charitable Fund

FOR THE YEAR ENDED 31 MARCH 2024

I report on the accounts of Kent and Medway NHS Social Care Partnership Trust Charitable Fund for the year ended 31 March 2024 which comprise the statement of financial activities, balance sheet and notes set out on pages 16 to 23.

Respective responsibilities of trustees and examiner

The charity's trustees are responsible for the preparation of the accounts. The charity's trustees consider that an audit is not required for this year under section 144 of the Charities Act 2011 ("the Charities Act") and that an independent examination is needed.

It is my responsibility to:

- examine the accounts under section 145 of the Charities Act;
- to follow the procedures laid down in the general Directions given by the Charity Commission (under section 145(5)(b) of the Charities Act, and
- to state whether particular matters have come to my attention.

Basis of independent examiner's statement

My examination was carried out in accordance with the general Directions given by the Charity Commission. An examination includes a review of the accounting records kept by the charity and a comparison of the accounts presented with those records. It also includes consideration of any unusual items or disclosures in the accounts, and the seeking of explanations from the trustees concerning any such matters. The procedures undertaken do not provide all the evidence that would be required in an audit, and consequently no opinion is given as to whether the accounts present a 'true and fair' view and the report is limited to those matters set out in the statement below.

Independent examiner's statement

In connection with my examination, no material matters have come to my attention which gives me cause to believe that in, any material respect:

- the accounting records were not kept in accordance with section 130 of the Charities Act; or
- the accounts did not accord with the accounting records; or
- the accounts did not comply with the applicable requirements concerning the form and content of accounts set out in the Charities (Accounts and Reports) Regulations 2008 other than any requirement that the accounts give a 'true and fair' view which is not a matter considered as part of an independent examination.

I have come across no other matters in connection with the examination to which attention should be drawn in this report in order to enable a proper understanding of the accounts to be reached.

61 London Road
Maidstone,
Kent
ME16 8TX

J Griggs FCA
LEVICKS Chartered Accountants
and Business Advisers
Date: 28 January 2025

Kent and Medway NHS Social Care Partnership Trust Charitable Fund

Accounts for Year ended 31 March 2024

Registered Charity Number: 1202262



Foreword

Reference and Administrative Details

The Trustee presents their annual report and the independently examined financial statements for the year ended 31 March 2024.

The annual report and financial statements comply with the Charity's trust deed, applicable Accounting Standards in the United Kingdom and the Statement of Recommended Practice (Charities SORP FRS 102). "Accounting and Reporting by Charities" second edition issued in October 2019.

Name and address of Charity:

Kent and Medway NHS Social Care Partnership Trust Charitable Fund
Priority House, Hermitage Lane, Maidstone ME16 9PH

Registered Charity Number: 1202262

Other Name Used by Charity: Health, Heart, Hope @ KMPT

Trustee Arrangements:

Kent and Medway NHS Social Care Partnership Trust is the Corporate Trustee of the Charity. The Board of Directors (Voting Board Members) who served the Trust during the year to 31 March 2024 were as follows:

Sheila Stenson, Chief Executive (since November 2023), Deputy Chief Executive/Chief Finance (from November 2022 until October 2023), Executive Director of Finance (until October 2022)

Helen Greatorex, Chief Executive - left November 2023

Donna Hayward-Sussex, Deputy Chief Executive (from November 2023), Chief Operating Officer (from March 2022)

Dr Afifa Qazi, Chief Medical Officer

Andy Cruickshank, Chief Nurse

Dr Adrian Richardson, Director of Partnerships and Transformation

Sandra Goatley, Chief People Officer

Nick Brown, Chief Finance and Resource Officer (since November 2023)

Jackie Craissati, Trust Chair

Catherine Walker, Non-Executive Director & Senior Independent Director

Venu Branch, Non-Executive Director and Deputy Chair (until February 2024)

Peter Conway, Non-Executive Director

Kim Lowe, Non-Executive Director

Sean Bone-Knell, Non-Executive Director

Mickola Wilson, Non-Executive Director

Dr Asif Bachlani, Associate Non-Executive Director

Stephen Waring, Non-Executive Director

Dr MaryAnn Ferreux, Associate Non-Executive Director

Structure

Bankers:

Natwest Bank
Corporate & Institutional Banking
9th Floor
280 Bishopsgate
London
EC2M 4RB

Independent Examiner:

J.A. Griggs FCA
Levicks Chartered Accountants and Business Advisers
61 London Road
Maidstone,
Kent
ME16 8TX

Structure, Governance and Management of the Charitable Funds

The Charity was created by Trust Deed and is registered with the Charity Commission as Kent and Medway NHS Social Care Partnership Trust Charitable Fund (Registered Charity No. 1202262).

The objects of the Charity, as stated in its governing document, are "For any charitable purpose(s) for the benefit of service users, carers and staff relating to the National Health Service (including research), wholly or incidentally related to the delivery of services provided by Kent and Medway NHS and Social Care Partnership Trust."

Statement of Financial Activities for the year ended 31 March 2024

| | | Restricted funds | Unrestricted funds | Total funds | Restricted funds | Unrestricted funds | Total funds |
|------------------------------------|------|------------------|--------------------|-----------------|------------------|--------------------|-----------------|
| | Note | 2024 | 2024 | 2024 | 2023 | 2023 | 2023 |
| | | £ | £ | £ | £ | £ | £ |
| Income from: | | | | | | | |
| Donations, grants and legacies | 2 | 2,500 | 55,234 | 57,734 | 1,000 | 43,050 | 44,050 |
| Charitable Activities | 3 | - | 4,140 | 4,140 | - | 3,892 | 3,892 |
| Investment Income - Bank Interest | 4 | - | 1,324 | 1,324 | - | 498 | 498 |
| Total Income | | 2,500 | 60,698 | 63,198 | 1,000 | 47,440 | 48,440 |
| Expenditure on: | | | | | | | |
| Raising funds | 5 | (150) | (9,425) | (9,575) | (100) | (38,449) | (38,549) |
| Governance and support costs | 6 | - | (900) | (900) | - | (840) | (840) |
| Charitable activities | 7 | (415) | (12,395) | (12,810) | (324) | (6,267) | (6,591) |
| Total Expenditure | | (565) | (22,720) | (23,285) | (424) | (45,556) | (45,980) |
| Net Movement in Funds | | 1,935 | 37,978 | 39,913 | 576 | 1,884 | 2,460 |
| Reconciliation of Funds: | | | | | | | |
| Total Funds brought forward | | 576 | 1,884 | 2,460 | - | - | - |
| Total Funds carried forward | | 2,511 | 39,862 | 42,373 | 576 | 1,884 | 2,460 |

* See note 1.1 for information on comparatives, as the prior period comparatives are not entirely comparable.

All results stated in the above Statement of Financial Activities derive from continuing operations.

The notes at pages 18 to 23 form part of this account.

Balance Sheet

as at 31 March 2024

| | | Restricted funds | Unrestricted funds | Total funds | Restricted funds | Unrestricted funds | Total funds |
|---|----|------------------|--------------------|----------------|------------------|--------------------|----------------|
| Note | | 31-Mar-24 | 31-Mar-24 | 31-Mar-24 | 31-Mar-23 | 31-Mar-23 | 31-Mar-23 |
| | | £ | £ | £ | £ | £ | £ |
| Current assets: | | | | | | | |
| Cash at bank and in hand | | 2,511 | 41,882 | 44,393 | 1,576 | 5,485 | 7,061 |
| Debtors | 8 | - | 2,317 | 2,317 | - | 219 | 219 |
| Creditors: amounts falling due within one year | | | | | | | |
| Other Creditors | 9 | - | (4,337) | (4,337) | - | (3,820) | (3,820) |
| Deferred Income | 9 | - | - | - | (1,000) | - | (1,000) |
| Net current assets | | 2,511 | 39,862 | 42,373 | 576 | 1,884 | 2,460 |
| Represented by: | | | | | | | |
| Restricted funds | 10 | 2,511 | - | 2,511 | 576 | - | 576 |
| Unrestricted funds | 10 | - | 39,862 | 39,862 | - | 1,884 | 1,884 |
| Total funds | | 2,511 | 39,862 | 42,373 | 576 | 1,884 | 2,460 |

The notes on pages 18 to 23 form part of this account.

The financial statements on pages 16 to 23 were approved by the Trustees on 24 January 2025 and are signed on their behalf by:

Sheila Stenson

KMPT CEO

Date: 24 January 2025

S. Stenson

Nick Brown

Chief Finance and Resources
Officer

Date: 24 January 2025

N. Brown

Notes to the financial statements for the year ended 31 March 2024

1. Accounting policies

1.1 Basis of preparation of financial statements

The financial statements are prepared on a going concern basis under the historical cost convention.

The financial statements have been prepared in accordance with the Charities SORP (FRS 102) - Accounting and Reporting by Charities: Statement of Recommended Practice applicable to charities preparing their accounts in accordance with the Financial Reporting Standard applicable in the UK and Republic of Ireland (FRS 102) (effective 1 January 2019), the Financial Reporting Standard applicable in the UK and Republic of Ireland (FRS 102) and the Charities Act 2011.

Kent and Medway NHS Social Care Partnership Trust Charitable Fund meets the definition of a public benefit entity under FRS 102.

The Trustee considers that there are no material uncertainties that exist with the Kent and Medway NHS Social Care Partnership Trust Charitable Fund's ability to continue as a going concern.

The prior period comparatives are not entirely comparable as they relate to the prior 14 month period starting in February 2022 and ending in March 2023, whereas these statements are based on a 12 month period from the 1st April 2023 to 31st March 2024.

1.2 Fund accounting

General funds are unrestricted funds which are available for use at the discretion of the Trustees in furtherance of the general objectives of the Charity and which have not been designated for other purposes. Designated funds are a portion of the unrestricted funds that have been set aside by the Trustee for particular purposes, normally reflecting the non-binding wishes of the donors.

Restricted funds are funds which are to be used in accordance with specific restrictions imposed by donors or which have been raised by the Charity for particular purposes. The costs of raising and administering such funds are charged against the specific fund.

Notes to the financial statements for the year ended 31 March 2024 (continued)

1.3 Income

All income is recognised once the Charity has entitlement to the income, it is probable that the income will be received and the amount of income receivable can be measured reliably.

Grants are recognised when the conditions attached to it have been met. Where a grant is used to fund expenditure it is taken to the Statement of Financial Activities to match that expenditure.

Gifts in kind, such as food and care packages are not accounted for when they are accepted and immediately distributed unless a single donation is material.

1.4 Expenditure

All expenditure is accounted for on an accruals basis.

Raising funds includes the costs attributed to generating income for the charity.

Support costs are those costs which do not relate directly to a single activity. Support costs include costs associated with finance, governance and other central costs which support or relate to more than one area of activity.

Irrecoverable VAT is charged to the category of resources expended for which it was incurred.

1.5 Cash at Bank and in hand

Cash at bank and in hand includes cash and short term highly liquid investments with a short maturity of three months or less from the date of acquisition or opening of the deposit or similar account.

1.6 Financial instruments

The Charity only has financial assets and financial liabilities of a kind that qualify as basic financial instruments. Basic financial instruments are initially recognised at transaction value and subsequently measured at their settlement value.

1.7 Trustee Remuneration, Benefits and Expenses

No representative of the Trustee received any remuneration or reimbursement of expenses from the Charity Fund.

1.8 Staff Costs

The Charity has no employees and therefore does not pay any salaries, national insurance and pension contributions. The costs of staff employed by Kent and Medway NHS and Social Care Partnership Trust who carry out works for the Charity are recharged.

2. Income from donations, grants and legacies, year ended 31st March 2024

| | Restricted funds | Unrestricted funds | Total funds | Restricted funds | Unrestricted funds | Total funds |
|---|------------------|--------------------|---------------|------------------|--------------------|---------------|
| | 2024 | 2024 | 2024 | 2023 | 2023 | 2023 |
| | £ | £ | £ | £ | £ | £ |
| Corporate donations | - | 51,050 | 51,050 | - | 40,000 | 40,000 |
| Individual donations | - | 4,184 | 4,184 | - | 2,935 | 2,935 |
| Grants | 2,500 | - | 2,500 | 1,000 | - | 1,000 |
| Gift aid on donations | - | - | - | - | 115 | 115 |
| Total Income from donations, grants and legacies | 2,500 | 55,234 | 57,734 | 1,000 | 43,050 | 44,050 |

Income from Charitable Activities, year ended 31st March 2024

| | Restricted funds | Unrestricted funds | Total funds | Restricted funds | Unrestricted funds | Total funds |
|--|------------------|--------------------|--------------|------------------|--------------------|--------------|
| | 2024 | 2024 | 2024 | 2023 | 2023 | 2023 |
| | £ | £ | £ | £ | £ | £ |
| Webbs Garden produce sales | - | 4,140 | 4,140 | - | 3,892 | 3,892 |
| Total income from Charitable Activities | - | 4,140 | 4,140 | - | 3,892 | 3,892 |

4. Investment Income - Bank Interest, year ended 31st March 2024

| | Restricted funds | Unrestricted funds | Total funds | Restricted funds | Unrestricted funds | Total funds |
|--------------------------------|------------------|--------------------|--------------|------------------|--------------------|-------------|
| | 2024 | 2024 | 2024 | 2023 | 2023 | 2023 |
| | £ | £ | £ | £ | £ | £ |
| Bank Interest | - | 1,324 | 1,324 | - | 498 | 498 |
| Total Investment Income | - | 1,324 | 1,324 | - | 498 | 498 |

5. Expenditure for Raising Funds, year ended 31st March 2024

| | Restricted funds | Unrestricted funds | Total funds | Restricted funds | Unrestricted funds | Total funds |
|--------------------------------|------------------|--------------------|--------------|------------------|--------------------|---------------|
| | 2024 | 2024 | 2024 | 2023 | 2023 | 2023 |
| | £ | £ | £ | £ | £ | £ |
| Fundraising materials | - | 211 | 211 | - | 2,790 | 2,790 |
| Webbs garden plants/ equipment | - | - | - | - | 50 | 50 |
| Charity Lead | 150 | 9,214 | 9,364 | 100 | 35,609 | 35,709 |
| | 150 | 9,425 | 9,575 | 100 | 38,449 | 38,549 |

6. Expenditure for Governance and Support Costs, year ended 31st March 2024

| | Restricted funds | Unrestricted funds | Total funds |
|---------------------------|------------------|--------------------|-------------|
| | 2024 | 2024 | 2024 |
| | £ | £ | £ |
| Independent examiner fees | - | 900 | 900 |
| | | 900 | 900 |

| Restricted funds | Unrestricted funds | Total funds |
|------------------|--------------------|-------------|
| 2023 | 2023 | 2023 |
| £ | £ | £ |
| - | 840 | 840 |
| | 840 | 840 |

7. Expenditure for Charitable Activities, year ended 31st March 2024

| | Restricted funds | Unrestricted funds | Total funds |
|-------------------------------------|------------------|--------------------|-------------|
| | 2024 | 2024 | 2024 |
| | £ | £ | £ |
| Plants and equipment for Cherrywood | - | - | - |
| Webbs garden plants/equipment | 415 | 94 | 509 |
| Miscellaneous | - | 739 | 739 |
| Bank Charges | - | 300 | 300 |
| Administrative support | - | 11,262 | 11,262 |
| | 415 | 12,395 | 12,810 |

| Restricted funds | Unrestricted funds | Total funds |
|------------------|--------------------|-------------|
| 2023 | 2023 | 2023 |
| £ | £ | £ |
| 324 | - | 324 |
| - | - | - |
| - | 25 | 25 |
| - | 304 | 304 |
| - | 5,938 | 5,938 |
| 324 | 6,267 | 6,591 |

8. Debtors

| | 31-Mar-24 | 31-Mar-23 |
|--|-----------|-----------|
| | £ | £ |
| Monies collected by Kent and Medway NHS Social Care and Partnership Trust on behalf of the Charity | 2,202 | 104 |
| Accrued income - gift aid | 115 | 115 |
| | 2,317 | 219 |

9. Creditors

| | 31-Mar-24 | 31-Mar-23 |
|---|-----------|-----------|
| | £ | £ |
| Monies paid by Kent and Medway NHS Social Care and Partnership Trust on behalf of the Charity | 2,597 | 2,980 |
| Restricted Creditors: Deferred Income: Grants | - | 1,000 |
| Other Creditors - Independent examiner fees | 1,740 | 840 |
| | 4,337 | 4,820 |

10. Statement of Funds

| | Balance at 1 Apr 2023 | Incoming Resources | Resources Expended | Balance at 31 March 2024 | Balance at 1 Feb 2022 | Incoming Resources | Resources Expended | Balance at 31 March 2023 |
|---------------------------|-----------------------|--------------------|--------------------|--------------------------|-----------------------|--------------------|--------------------|--------------------------|
| | £ | £ | £ | £ | £ | £ | £ | £ |
| Unrestricted funds | | | | | | | | |
| Dementia | 300 | 412 | - | 712 | - | 300 | - | 300 |
| Webbs Garden | 3,842 | 4,140 | (94) | 7,888 | - | 3,892 | (50) | 3,842 |
| General funds | (2,258) | 56,146 | (22,626) | 31,262 | - | 43,248 | (45,506) | (2,258) |
| Total | 1,884 | 60,698 | (22,720) | 39,862 | - | 47,440 | (45,556) | 1,884 |
| Restricted funds | | | | | | | | |
| Cherrywood Ward | 576 | - | - | 576 | - | 1,000 | (424) | 576 |
| Webbs Garden | - | 1,000 | (415) | 585 | - | - | - | - |
| Ethelbert Road | - | 1,500 | (150) | 1,350 | - | - | - | - |
| Total | 576 | 2,500 | (565) | 2,511 | - | 1,000 | (424) | 576 |
| Total of funds | 2,460 | 63,198 | (23,285) | 42,373 | - | 48,440 | (45,980) | 2,460 |

Unrestricted funds

The unrestricted fund can be applied for any of the purposes for which the Charitable Fund was established.

There are designated funds for:-

Cherrywood Ward - A grant was received from Dartford Borough Council to improve Cherrywood Ward with edible, sensory plants for patients to plant.

Webbs Garden - A deferred grant from Kent County Council was released to restore the pagoda area at Webbs Garden.

Ethelbert Road - A grant was received from Barchester Healthcare for a therapeutic garden project.

11. Related Party Transactions

Board members of Kent and Medway NHS and Social Care Partnership Trust which is the Corporate Trustee of the Charity are also members of the committee which is empowered by the Trustee to act on its behalf in the day to day administration of all funds held on trust, which is the Charitable Funds Committee (CFC).

Board members of Kent and Medway NHS and Social Care Partnership Trust, the Corporate Trustee, and members of CFC ensure that the business of the charity is dealt with separately from that associated with exchequer funds for which they are also responsible. Kent and Medway NHS Social Care Partnership Trust made a corporate donation to the Charity to the value of £50,000 as detailed in Note 2.

During the year neither the Corporate Trustee nor members of the key management staff or parties related to it has undertaken any material transactions with or received any remuneration or expenses from Kent and Medway NHS Social Care Partnership Trust Charitable Fund.

As at 31 March 2024 £2,202 (2023: £104) was owed to the Charity by Kent and Medway NHS and Social Care Partnership Trust in relation to monies collected on behalf of the Charity. As at 31 March 2024 £2,597 (2023: £2,980) was owed by the Charity to Kent and Medway NHS Social Care Partnership Trust in relation to monies paid on behalf of the Charity.