

FRIENDS OF EASTVILLE PARK

England & Wales · Charity number 1199637

Details

Status Registered

Legal form CIO

Registered 2022-07-13

Register [View on the Charity Commission register](#)

Contact

Address Friends Of Eastville Park
c/o Glenfrome Primary School
Cottisford Road
Bristol
BS5 6TY

Phone 07795100165

Email ftdawn@globalnet.co.uk

Website eastvillepark.org.uk

Activities

Objects: FOR THE BENEFIT OF THE INHABITANTS OF EASTVILLE AND THE SURROUNDING AREA ("THE AREA OF BENEFIT") TO PROVIDE OR ASSIST IN THE PROVISION OF FACILITIES FOR RECREATION AND OTHER LEISURE TIME OCCUPATION IN THE INTERESTS OF SOCIAL WELFARE WITH THE OBJECT OF IMPROVING THEIR CONDITIONS OF LIFE FOR THE INHABITANTS OF THE AREA OF BENEFIT IN PARTICULAR BUT NOT EXCLUSIVELY BY THE PRESERVATION, PROMOTION, SUPPORT, ASSISTANCE AND IMPROVEMENT OF EASTVILLE PARK.

Activities: Friends of Eastville Park provides a community hub in Eastville Park. We use the hub to promote community cohesion, reduce isolation, promote volunteering in the park and to provide both people and money to improve park facilities

Classification

- **How:** Provides Buildings/facilities/open Space, Provides Services
- **What:** Recreation

Geography

- Bristol City

Finances

Period end	Income	Expenditure	Assets	Employees
2025-03-31	£52,221	£30,489	-	-
2024-03-31	£45,616	£52,184	-	-
2023-03-31	£82,130	£29,996	-	-

Trustees

Name	Role	Appointed
Sarah Jane West	Chair	2022-07-14
Andrew Duncan Gee		2022-07-14
Christina Mary Quinnell		2022-07-14
Christina Stokes		2022-07-17
Gillian Clare Calloway		2022-07-14
Ian Player		2022-07-14
JOSEPHINE ELIZABETH EDKINS		2022-07-14
Martyn Andrew Cordey		2022-07-14
Maureen Elizabeth Lewis		2022-07-14

FRIENDS OF EASTVILLE PARK

England & Wales - Charity number 1199637

Accounts



Friends of
EASTVILLE PARK

**Trustees Report and Financial Statements
Year to 31st March 2025**

Charity number: 1199637

Friends of Eastville Park Trustees' Annual Report Year to 31st March 2025

CONTENTS

Page

2. Reference and Administrative Information
3. Structure, Governance and Management
3. Objects and Activities
4. Achievements and Performance
6. Financial Review
7. Statement of Responsibilities of Trustees
8. Independent Examiner's Report
9. Statement of Financial Activities
10. Balance Sheet
11. Notes to the Accounts

Reference and Administrative Information

Charity name: Friends of Eastville Park
Charity registration number: 1199637
Registered Office and
Operational Address: c/o Glenfrome Primary School, Cottisford Road
Bristol BS5 6TY
Website: eastvillepark.org.uk

Trustees 2024-25

Sarah West (Chair)
Josephine Edkins (Treasurer)
Christina Quinnell (Secretary)
Andrew Gee (Events and Activities Co-ordinator)
Gillian Calloway
Maureen Lewis
Ian Player
Martyn Cordey
Christina Stokes

Structure, Governance and Management

The organisation is a Charitable Incorporated Organisation, incorporated and registered as a charity on 13th July 2022. Its governing document is the Constitution dated 6th July 2022. The charity has taken over activities previously carried out by the Friends of Eastville Park unincorporated association, which had been operating since June 2016.

Recruitment and Appointment of Trustees

New trustees are appointed for a term of three years by a resolution passed at a meeting of the charity trustees. In selecting individuals for appointment as charity trustees, the charity trustees have regard to the skills, knowledge and experience needed for the effective administration of the CIO. The board will seek to recruit new trustees to be representative of the area which the charity serves.

Objects and Activities

Charitable Objects

For the benefit of the inhabitants of Eastville and the surrounding area (“the area of benefit”) to provide or assist in the provision of facilities for recreation and other leisure time occupation in the interests of social welfare with the object of improving their conditions of life for the inhabitants of the area of benefit in particular but not exclusively by the preservation, promotion, support, assistance and improvement of Eastville Park.

Public Benefit

The charity delivers public benefit by organising and carrying out activities in Eastville Park, such as environmental works and cultural and sporting events, as detailed in “Achievements and Performance” below. These activities are open to all members of the public and are offered either at low cost or free of charge.

The Trustees are aware of the requirement of public benefit and seek to implement the Charity Commissioners' guidance on public benefit.

Achievements and Performance

We continue to celebrate what has been achieved in the park and reflect on all the activities which have been happening in the refurbished Nissen Hut Community Hub. Many groups from last year have gone from strength to strength and we have welcomed many new projects and initiatives to continue to fulfil our charitable objectives for the community in and around Eastville Park.

This year Andy Gee spent a period of time in hospital and is now recovered and back up to full speed. During this time the committee rallied round and the logistics of putting on the programme of events were covered but without Andy we all were holding our breath for his return. He was overwhelmed by the love and support of the community at this time. We are so grateful for everything he does.



We also currently want to grow and are looking for more suitably skilled trustees to join us. Please contact us; friendsofeastvillepark@gmail.com

Here is an overview of where we focussed our voluntary energy over the past year or so.

New Year 2024

Our Thursday drop-in social group, **Community Connect** continued to be an important project for Friends of Eastville Park and went from strength to strength providing company, friendship, activities, advice, fun and a lovely lunch all for free! This project for over 55's is funded by the Grateful Society and latterly now by the People's Health Trust is managed by Laura Cobbett who brings her experience and ideas to continue creating a welcoming group every Thursday from 11 till 2pm. Many thanks to Laura and her volunteers.



Funded by The Peoples's Health Trust our free **Creative Group** which met on Monday evenings proved wildly popular and Jo Penguilley delivered and curated 8 seasons of arts and craft workshops resulting in many new friendships and evenings of crafting and fun. Our **Tuesday morning Nature Group** also funded by this organisation came to an end towards the end of the year as low numbers coming made it unviable.

Roots to Wellbeing, the leading green social prescribing service met weekly at the Community Hub with a programme of outdoor nature connection activities in the park for anybody struggling with their mental health, loneliness anxiety or isolation.

We continued to host the eclectic and popular **People's University of Fishponds** monthly on Sunday nights.



On Thursday nights music fills the air with the blissful **Songbirds Choir** led by the inspirational **Jannah Warlow**. Every Friday **Eastville Park Food Club** continued to provide support for the local community by sourcing and distributing donated food and other items at this important weekly event.

Spring

Eastville Bowls Club continued to meet regularly and is open to new members and enquiries.



Friends of Eastville Park continued to support local teenagers doing their **Bronze Duke of Edinburgh Awards Scheme**. Their contribution in the park is invaluable many thanks to Andy for coordinating this! The flexible outside space also was perfect for **Bristol City Council's Horticultural Course** which took place over a number of the spring and summer months.

The first of 4 hugely popular **Book Fayres** and **Fundraising Cafés** also took place in June.

Frome Fairies got their waders on and cleared tons of tree debris from the river near the weir great family fun!

The Community Hub hosted **Folk Around Fishponds** every fortnight, a very special fortnightly event out for musicians and audience.



Nature Sub Group

2024 was a busy year for the Habitat Management Volunteers as they continued to manage the blackthorn saplings in Redhill Drive field. Using funds awarded by Quartet Community, some wildflowers were sown at the end of the year (with lots more planned for this autumn!).

Nature Habitats in the park

The Habitat Management Volunteers are always keen to attract more people to their monthly sessions. These take place on the last Sunday of each month and involve enhancing and improving habitats for nature around the park, such as removing blackthorn saplings encroaching into grassland areas.

Summer

The **Pop Up Cafe** volunteers linked up with **Bristol Refugee Festival – Celebrating Sanctuary** again and created a beautiful way of supporting refugees in our community with an event full of food, tennis, music and fun! It had a Horn of Africa focus this year and despite a few showers we danced and feasted.

Children's Play Area: We aim to renovate the sandpit and its equipment.

Eastville Park Bowls Club were in full swing with home and away games and the occasional win!

Music with Maya delighted the little ones from August, and the **Nissen Hut Community Hub** became extremely busy with bookings nearly every day of the week, with parties, corporate days in which teams painted, gardened and made a difference.



We also supported Special Friends Film Club a group which uses the Community Hub to enable young people who find mainstream cinemas hard to access to enjoy a cinema experience together.

Other “one off” events included a couple of corporate away days and team building events and we hosted a lovely fundraising café for the charity Bristol After Stroke. We also have close links with the Nordik Walkers who love walking in the park

Autumn

Imayla Youth Club continued to meet at the Community Hub on a Thursday and then we obtained funding from The People’s Health Trust to provide some further groups including Monday evenings (6 -9pm) **Creative Group**.

Christmas tree sales went well as well as the wonderful **Eastville Park Calendar** and **A History of Eastville Park** booklet, providing us with a fantastic fundraising boost. Our lovely **Elderflower Cordial** is also available while stocks last.

Throughout 2024 and into 2025 we have continued to try to keep the local community aware of our activities and dreams with regular “**Parkie**” articles in the Fishponds Voice; thank you Ken for always making space for us.

New Year 2025

We are so grateful for all the volunteers who have made events happen, too many to name here and to all the wonderful people who have come and been part of this unique journey. My highlight was being part of the Creative Group and watching the sunsets in March from the park. What was yours?

Financial Review

The charity had a surplus of £13,409 during the year on unrestricted funds (2024 deficit of £19,972). On an ongoing basis, expenditure is limited to available funds for each area of work, and the charity has no significant long term commitments; therefore the trustees are satisfied that the charity is a going concern, and will continue to be for the foreseeable future.

Reserves Policy

The trustees have established a policy to provide for any sudden and unexpected loss of income, whereby the unrestricted funds should equal at least three and six months of core running costs, which equates to around £7,500. At the balance sheet date the free cash reserves amounted to £39,266 (2024 £25,857): therefore £7,500 of this has been designated as a Contingency Fund.

Statement of Responsibilities of the Trustees

Trustees are required to prepare financial statements for each financial year, which give a true and fair view of the state of affairs of the charity and the incoming resources and application of resources, including the net income or expenditure, of the charity for the year. In preparing those financial statements the trustees are required to:

- Select suitable accounting policies and then apply them consistently;
- Observe the methods and principles in the applicable Charities SORP;
- Make judgements and estimates that are reasonable and prudent;
- State whether applicable accounting standards and statements of recommended practice have been followed, subject to any material departures disclosed and explained in the financial statements; and
- Prepare the financial statements on the going concern basis unless it is inappropriate to presume that the charity will continue in operation.

The trustees are responsible for keeping proper accounting records which disclose with reasonable accuracy at any time the financial position of the charity and which enable them to ensure that the financial statements comply with the Charities Act 2011 and the applicable Charities (Accounts and Reports) Regulations.

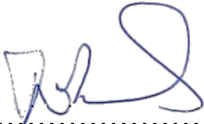
The trustees are also responsible for safeguarding the assets of the charity and hence for taking reasonable steps for the prevention and detection of fraud and other irregularities. The trustees confirm that to the best of their knowledge there is no information relevant to the Independent Examination of which the Examiner is unaware.

The trustees also confirm that they have taken all necessary steps to ensure that they themselves are aware of all relevant financial information and that this information has been communicated to the Examiner.

Approved by the trustees on 12th November 2025 and signed on their behalf by:



..... Sarah West, Trustee



..... Jo Edkins, Trustee

Independent examiner's report to the trustees of Friends of Eastville Park for the year to 31st March 2025

I report on the accounts of the Charitable Incorporated Organisation for the period ending 31st March 2025 which are set out on pages 9 to 15.

Responsibilities and basis of report

As the trustees of the Charity, you are responsible for the preparation of the accounts in accordance with the requirements of the Charities Act 2011 ('the Act').

I report in respect of my examination of the Charity's accounts carried out under section 145 of the 2011 Act and in carrying out my examination I have followed all the applicable directions given by the Charity Commission under section 145(5)(b) of the Act.

Independent examiner's statement

I have completed my examination. I confirm that no material matters have come to my attention in connection with the examination giving me cause to believe:

1. accounting records were not kept in respect of the Charity as required by section 130 of the Act; or
2. the accounts do not accord with those records; or
3. the accounts do not comply with the applicable requirements concerning the form and content of accounts set out in the Charities (Accounts and Reports) Regulations 2008 other than any requirement that the accounts give a true and fair view which is not a matter considered as part of an independent examination.

I have no concerns and have come across no other matters in connection with the examination to which attention should be drawn in this report in order to enable a proper understanding of the accounts to be reached.



.....
13th November 2025

Rupert Taylor
5 Mount Pleasant
Millbrook
Torpoint
Cornwall PL10 1BH

Friends of Eastville Park
Statement of Financial Activities
Year to 31st March 2025

		Restricted funds	Unrestricted funds	Total funds	Total funds
		Year to 31/03/25	Year to 31/03/25	Year to 31/03/25	Year to 31/03/24
		£	£	£	£
	Notes				[see Note 13]
Income:					
Donations and legacies	[2]	150	574	724	500
Charitable activities	[3]	24,743	21,395	46,138	34,971
Other trading activities	[4]	-	5,359	5,359	10,145
Total Income		24,893	27,328	52,221	45,615
Expenditure:					
Expenditure on raising funds	[5]	-	2,911	2,911	6,183
Charitable activities	[6]	16,569	11,008	27,577	62,688
Total Expenditure		16,569	13,919	30,489	68,870
Net Income / (Expenditure)		8,324	13,409	21,732	(23,255)
Transfers between funds		-	-	-	-
Net Movement in Funds		8,324	13,409	21,732	(23,255)
Total funds brought forward		3,022	25,857	28,879	52,134
Total funds carried forward		11,346	39,266	50,611	28,879

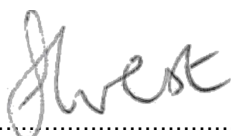
Friends of Eastville Park

Balance Sheet

As at 31st March 2025


	Notes	2025 £	2024 £
Fixed Assets	[7]	-	-
Current Assets			
Cash at bank and on hand		50,789	29,488
Debtors and prepayments	[8]	3,164	2,518
		<u>53,952</u>	<u>32,006</u>
Current Liabilities			
Creditors and accruals	[9]	3,341	3,128
Total Current Liabilities		<u>3,341</u>	<u>3,128</u>
Net Current Assets		<u>50,611</u>	<u>28,879</u>
Net Assets		<u>50,611</u>	<u>28,879</u>
The funds of the charity:			
Unrestricted funds:			
General funds	[10]	31,766	18,357
Designated funds	[10]	7,500	7,500
Restricted funds	[10]	<u>11,346</u>	<u>3,022</u>
		<u>50,611</u>	<u>28,879</u>

Approved by the trustees on 13th November 2025 and signed on their behalf by:



.....

Sarah West



.....

Jo Edkins

Friends of Eastville Park

Notes to the Accounts

Year to 31st March 2025

[1] Principal Accounting Policies

The principal accounting policies adopted in the preparation of the financial statements are set out below.

(a) Basis of preparation

The financial statements have been prepared in accordance with the Accounting and Reporting by Charities: Statement of Recommended Practice applicable to charities preparing their accounts in accordance with the Financial Reporting Standard applicable in the UK and Republic of Ireland (FRS 102) (effective 1 January 2019), and the Charities Act 2011.

Friends of Eastville Park meets the definition of a public benefit entity under FRS 102. Assets and liabilities are initially recognised at historical cost or transaction value unless otherwise stated in the relevant accounting policy note(s).

(b) Preparation of the accounts on a going concern basis

The charity's balance sheet at 31st March 2025 is in surplus, and funding has been secured for upcoming activities of the charity. No activities are planned without income to support them. Therefore the trustees are satisfied that the charity remains a going concern on an ongoing basis.

(c) Income

Income is recognised when the charity has entitlement to the funds, any performance conditions attached to the items of income have been met, it is probable that the income will be received and the amount can be measured reliably.

Income from grants is recognised when the charity has entitlement to the funds, any performance conditions attached to the grants have been met, it is probable that the income will be received and the amount can be measured reliably and is not deferred.

Income received in advance of activities is deferred until the criteria for income recognition have been met.

(d) Donated services and facilities

Donated professional services and facilities are recognised as income when the charity has control over the item, any conditions associated with the donated item have been met, the receipt of economic benefit from the use by the charity is probable and that economic benefit can be measured reliably. There were no such donations during the year in question. In accordance with the Charities SORP (FRS 102), the general volunteer time of trustees and volunteers is not recognised with any monetary value

(e) Interest receivable

Interest on funds held on deposit is included when receivable and the amount can be measured reliably by the charity; this is normally upon notification of the interest paid or payable by the Bank.

(f) Fund Accounting

[i] Unrestricted funds are available for use at the discretion of the trustees in furtherance of the general objectives of the charity.

[ii] Designated funds are unrestricted funds set aside by the Management Committee for particular purposes.

[iii] Restricted funds are subjected to restrictions on their expenditure imposed by the donor or through the terms of an appeal.

(g) Expenditure

Expenditure is recognised once there is a legal or constructive obligation to make a payment to a third party, it is probable that settlement will be required and the amount of the obligation can be measured reliably. Expenditure is classified under the cost against the activity for which the expenditure was incurred, under the following activity headings:

[i] Costs of raising funds comprise the costs associated with attracting voluntary income and the costs of trading for fundraising purposes. There were no such costs during the year in question.

[ii] Charitable expenditure comprises those costs incurred by the charity in the delivery of its activities and services for its beneficiaries. It includes both costs that can be allocated directly to such activities, and those costs of an indirect nature necessary to support them.

[iii] Other expenditure represents those items not falling into any other heading. There were no such costs during the year in question.

(h) Allocation of support costs

Support costs are those functions that assist the work of the charity but do not directly undertake charitable activities. These include office costs, finance, personnel, payroll and governance costs which support the charity's charitable activities.

(i) Taxation

The charity is exempt from tax on income and gains falling within section 505 of the Taxes Act 1988 or Section 252 of the Taxation of Chargeable Gains Act 1992 to the extent that these are applied to its charitable objects.

(j) Fixed Assets

Tangible fixed assets are written off over the expected useful life of the asset, at 25% per annum on the reducing balance method. Individual items costing less than £500 are not treated as fixed assets.

Friends of Eastville Park
Notes to the Accounts (continued)
Year to 31st March 2025

(k) Debtors

Trade and other debtors are recognised at the settlement amount due after any trade discount offered.

(l) Cash at bank and in hand

Cash at bank and cash in hand includes cash and short term highly liquid investments with a short maturity of three months or less from the date of acquisition or opening of the account.

(m) Creditors

Creditors are recognised where the charity has a present obligation resulting from a past event that will probably result in the transfer of funds to a third party and the amount due to settle the obligation can be measured or estimated reliably. Creditors are normally recognised at their settlement amount after allowing for any trade discounts due.

[2] <u>Income from donations</u>	2025			2024		
	Restricted £	Unrestricted £	Total £	Restricted £	Unrestricted £	Total £
General donations	150	334	484	-	500	500
Gifts in Kind	-	240	240	-	-	-
	<u>150</u>	<u>574</u>	<u>724</u>	<u>-</u>	<u>500</u>	<u>500</u>

Gifts In Kind income represents payment for internet access paid by a trustee on behalf of the charity.

[3] <u>Income from charitable activities</u>	2025			2024		
	Restricted £	Unrestricted £	Total £	Restricted £	Unrestricted £	Total £
<u>Grants:</u>						
Grateful Society	4,000	-	4,000	5,000	-	5,000
People's Health Trust	20,743	-	20,743	8,890	-	8,890
Total grants	<u>24,743</u>	<u>-</u>	<u>24,743</u>	<u>13,890</u>	<u>-</u>	<u>13,890</u>
Lettings	-	15,563	15,563	-	14,519	14,519
Fees for activities	-	162	162	-	560	560
Sales of refreshments	-	5,670	5,670	-	6,002	6,002
Total income from charitable activities	<u>24,743</u>	<u>21,395</u>	<u>46,138</u>	<u>13,890</u>	<u>21,081</u>	<u>34,971</u>

The charity received no government grants during the period (2024 nil).

[4] <u>Other income</u>	2025			2024		
	Restricted £	Unrestricted £	Total £	Restricted £	Unrestricted £	Total £
Income from trading activities	-	5,359	5,359	-	10,145	10,145
	<u>-</u>	<u>5,359</u>	<u>5,359</u>	<u>-</u>	<u>10,145</u>	<u>10,145</u>

[5] <u>Expenditure on raising funds</u>	2025	2024
Costs of non-charitable trading activities	2,911	6,183

Friends of Eastville Park
Notes to the Accounts (continued)
Year to 31st March 2025

[6] Analysis of expenditure on charitable activities

	2025	2024
<u>Direct costs</u>	£	£
Activity costs	1,934	6,630
Repairs and maintenance	3,035	5,803
Park improvements*	-	33,795
Salaries and pensions	14,576	7,871
Recruitment	-	108
Travel expenses	396	472
Premises costs	3,875	4,490
Costs of refreshments	2,182	2,673
	<hr/>	<hr/>
Total direct costs	25,997	61,842
<u>Support costs</u>	£	£
Accountancy	294	142
Fee for Independent Examination	224	224
Stationery and printing	43	34
Bank charges	74	-
Insurance	408	283
IT costs	240	-
Legal and professional fees	297	163
	<hr/>	<hr/>
Total support costs	1,580	846
	<hr/>	<hr/>
Total charitable expenditure	27,577	62,688

As the charity only undertakes one kind of activity, support costs have not been apportioned.

* The park improvements are on behalf of Bristol City Council, who retain ownership of and responsibility for the assets in question; therefore they are not treated as capital expenditure for the charity.

[7] Tangible Fixed Assets

	Equipment
	2025
	£
<u>Cost</u>	
Balance brought forward	-
Additions during the year	-
	<hr/>
	-
<u>Depreciation</u>	
Balance brought forward	-
Charge for the year	-
	<hr/>
	-
	<hr/>
Net Book Value at 31/03/25	-
Net Book Value at 31/03/24	-

[8] Debtors and prepayments

	2025	2024
	£	£
Trade debtors	2,963	2,400
Prepayments	122	118
PAYE refund due	79	-
	<hr/>	<hr/>
	3,164	2,518

Friends of Eastville Park
Notes to the Accounts (continued)
Year to 31st March 2025

[9] <u>Creditors</u>	2025	2024
Amounts due within 12 months:	£	£
Trade creditors	-	2,718
Tax and National Insurance	-	31
Accruals	518	378
Funds held for Bristol Park Forum	2,790	-
Other creditors	33	-
	<hr/>	<hr/>
	3,341	3,128

[10] <u>Movements in Funds</u>	Balance at				Balance at
	31/03/2024	Income	Expenditure	Transfers	31/03/2025
<u>Restricted funds:</u>					
Defibrillator	942	-	-	-	942
Park bench	350	-	-	-	350
Grateful Society	1,579	4,000	(1,548)	-	4,031
People's Health Trust	151	20,743	(15,021)	-	5,872
Bench plaques	-	150	-	-	150
	<hr/>	<hr/>	<hr/>	<hr/>	<hr/>
Total Restricted Funds:	3,022	24,893	(16,569)	-	11,346
<u>Unrestricted Funds:</u>					
Designated Funds:					
Contingency Fund	7,500	-	-	-	7,500
	<hr/>	<hr/>	<hr/>	<hr/>	<hr/>
Total Designated Funds:	7,500	-	-	-	7,500
<u>General Funds</u>	18,357	27,328	(13,919)	-	31,766
	<hr/>	<hr/>	<hr/>	<hr/>	<hr/>
Total Unrestricted Funds:	25,857	27,328	(13,919)	-	39,266
	<hr/>	<hr/>	<hr/>	<hr/>	<hr/>
Total Funds:	28,879	52,221	(30,489)	-	50,611

Purposes of funds

The defibrillator and park bench funds were raised from the public for these purposes.

The Grateful Society grant helps cover the cost of a part-time co-ordinator.

The People's Health Trust funds a "Creative group" and a "Food group".

The bench plaques fund represents donations received specifically for memorial plaques on benches.

The Contingency Fund exists to enable the charity to continue operations for three months in the event of any unexpected drop in income.

[11] Payments to trustees and related party transactions

No trustees received remuneration during the year (2024 nil)

Three trustees received payments totalling £9,123 during the year (2024 £15,762 to two trustees). These were all reimbursements of costs incurred in furtherance of the charity's objects.

One trustee donated £240 worth of internet access on the charity's behalf (2024 £240 from one trustee).

There were no other related party transactions during the year.

[12] <u>Staff costs</u>	2025	2024
	£	£
Salaries	14,460	7,838
Employer pension	116	34
	<hr/>	<hr/>
	14,576	7,871

The average number of staff employed by the charity during the year was 2 (2024 1) and the average full time equivalent was 1.2 (2024 0.3).

The key management personnel of the charity are the trustees. There were no payments to key personnel during the year.

Friends of Eastville Park
Notes to the Accounts (continued)
Year to 31st March 2025

[13] Previous year comparisons

<u>Statement of Financial Activities 2023-24</u>	Restricted funds	Unrestricted funds	Total funds
	Year to 31/03/24	Year to 31/03/24	Year to 31/03/24
	£	£	£
Income:			
Donations and legacies	-	500	500
Charitable activities	13,890	21,081	34,971
Other trading activities	-	10,145	10,145
Total Income	13,890	31,725	45,615
Expenditure:			
Expenditure on raising funds	-	6,183	6,183
Charitable activities	17,172	45,515	62,688
Total Expenditure	17,172	51,698	68,870
Net Income / (Expenditure)	(3,282)	(19,972)	(23,255)
Transfers between funds			-
Net Movement in Funds	(3,282)	(19,972)	(23,255)
Total funds brought forward	6,304	45,829	52,134
Total funds carried forward	3,022	25,857	28,879

<u>Movements in Funds 2023-24</u>	Balance at 31/03/2023	Income	Expenditure	Transfers	Balance at 31/03/2024
<u>Restricted funds:</u>					
Defibrillator	2,183	-	(1,241)	-	942
Park bench	350	-	-	-	350
Warm Spaces	3,351	-	(3,351)	-	-
Quartet Nature Subgroup grant	420	-	(420)	-	-
Grateful Society	-	5,000	(3,421)	-	1,579
People's Health Trust	-	8,890	(8,739)	-	151
Total Restricted Funds:	6,304	13,890	(17,172)	-	3,022
<u>Unrestricted Funds:</u>					
Designated Funds:					
Contingency Fund	7,500	-	-	-	7,500
Total Designated Funds:	7,500	-	-	-	7,500
<u>General Funds</u>	38,329	31,725	(51,698)	-	18,357
Total Unrestricted Funds:	45,829	31,725	(51,698)	-	25,857
Total Funds:	52,134	45,615	(68,870)	-	28,879

FRIENDS OF EASTVILLE PARK

England & Wales - Charity number 1199637

Accounts

**Friends of Eastville Park
Trustees Report and Financial Statements
Year to 31st March 2024**

Charity number: 1199637

Friends of Eastville Park Trustees' Annual Report Year to 31st March 2024

CONTENTS

Page	
2.	Reference and Administrative Information
3.	Structure, Governance and Management
3.	Objects and Activities
4.	Achievements and Performance
6.	Financial Review
7.	Statement of Responsibilities of Trustees
8.	Independent Examiner's Report
9.	Statement of Financial Activities
10.	Balance Sheet
11.	Notes to the Accounts

Reference and Administrative Information

Charity name:	Friends of Eastville Park
Charity registration number:	1199637
Registered Office and Operational Address:	c/o Glenfrome Primary School, Cottisford Road Bristol BS5 6TY
Website:	eastvillepark.org.uk

Trustees 2023-24

Sarah West (chair)
Gillian Calloway
Andrew Gee
Maureen Lewis
Christina Quinnell
Josephine Edkins
Ian Player
Martyn Cordey
Christina Stokes
Joseph Mckenna (resigned 6th February 2024)

Structure, Governance and Management

The organisation is a Charitable Incorporated Organisation, incorporated and registered as a charity on 13th July 2022. Its governing document is the Constitution dated 6th July 2022. The charity has taken over activities previously carried out by the Friends of Eastville Park unincorporated association, which had been operating since June 2016.

Recruitment and Appointment of Trustees

New trustees are appointed for a term of three years by a resolution passed at a meeting of the charity trustees. In selecting individuals for appointment as charity trustees, the charity trustees have regard to the skills, knowledge and experience needed for the effective administration of the CIO. The board will seek to recruit new trustees to be representative of the area which the charity serves.

Objects and Activities

Charitable Objects

For the benefit of the inhabitants of Eastville and the surrounding area (“the area of benefit”) to provide or assist in the provision of facilities for recreation and other leisure time occupation in the interests of social welfare with the object of improving their conditions of life for the inhabitants of the area of benefit in particular but not exclusively by the preservation, promotion, support, assistance and improvement of Eastville Park.

Public Benefit

The charity delivers public benefit by organising and carrying out activities in Eastville Park, such as environmental works and cultural and sporting events, as detailed in “Achievements and Performance” below. These activities are open to all members of the public and are offered either at low cost or free of charge.

The Trustees are aware of the requirement of public benefit and seek to implement the Charity Commissioners' guidance on public benefit.

Achievements and Performance

Spring

Friday **Bowls Taster Sessions** started in April last year and will do again this year. **Eastville Bowls Club** continues to meet regularly and is open to new members and enquiries.

Friends of Eastville Park continued to support local teenagers by creating a programme for the volunteer element of their **Bronze Duke of Edinburgh Awards Scheme**. We have really started to rely on their contribution in the park and they were invaluable in helping with preparing and clearing up for **Santa's Grotto on the Green** later in the year, as well as helping on the day. Further activities they supported us with included bagging up duckfood, setting up for Food Club, clearing shrubs and trees, maintaining and decorating the pavilion and bowling green maintenance. We are so grateful for and encouraged by their enthusiasm, many thanks to Andy for co ordinating this!

The first of 4 monthly hugely popular **Fundraising Cafés** also took place.

Frome Fairies got their waders on and cleared tons of tree debris from the river near the weir great family fun!

The Community Hub hosted; **Folk Around Fishponds** every fortnight a very special fortnightly event out for musicians and audience

Nature Sub Group News

2023 was a busy year for the Habitat Management Volunteers as they continued to manage the blackthorn saplings in Redhill Drive field. Using funds awarded by Quartet Community, some wildflowers were sown at the end of the year (with lots more planned for this autumn!).

An effort to reintroduce cuckoo flowers was carried out earlier year and although a few have flowered, we hope they will establish.

While working in the field, we realised that some yellow rattle had become established and it was wonderful to be surrounded by large skipper and marbled white butterflies! These are just some butterfly species whose caterpillars rely on the long grasses to feed, thus allowing these valuable pollinators to thrive.

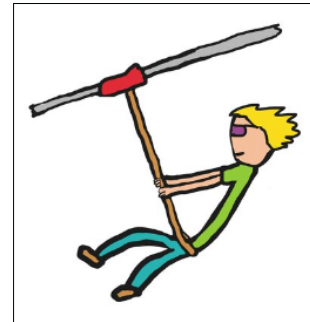
There are also exciting proposals from the council to create lowland meadows in several areas within the park and how these will help to further enhance Eastville Park as a valuable green space for both humans and nature



Summer

The Pop Up Cafe volunteers linked up with **Bristol Refugee Festival** again and created a beautiful way of supporting refugees in our community with an event full of food, tennis, music and fun! It had a South American focus this year and despite a few showers we danced and feasted.

The next stage of the **Children's Play Area** finally got completed after SOOO long and that zip wire hasn't stopped zipping since and the rope climbing frame is epic too! Incredible relentless work from Friends of Eastville Park probably the project that has demanded most consulting and vigilance we have been part of to date. Please support us in the next phase of renovating the beloved sandpit and it's equipment.



Eastville Park Bowls Club were in full swing with home and away games and the occasional win!

Music with Maya delighted the little ones from August and the Nissen Hut Community Hub became extremely busy with bookings nearly every day of the week with; parties, corporate days in which teams painted, gardened and made a difference.

We also supported **Special Friends Film Club** a group which uses the Community Hub to enable young people who find mainstream cinemas hard to access to enjoy a cinema experience together.

Bright Spaces came and painted wonderful **Alice in Wonderland** scenes on the pavilion walls. As well as the regular activities we had many "one off" events in which local groups hired the space including; Afghan minors, Eastville Park Bowls socials, Park story telling, many children's parties, One Nursery graduation, Gamelan with Isis and Kenyan Independence rounded off with the unforgettable outdoor screening of Jaws!!



Autumn

We joined up with the local **Home Educators** group who began a weekly session for children and it started getting seriously busy for us at the Hub with all the usual groups continuing to use the space but now we were joined by **Imayla Youth Club** and then we obtained funding from The People's Health Trust to provide some further groups. The incredibly popular **Monday evening (6 -9pm) Creative Group** and enjoyable **Tuesday Food and Nature Connection Group (11- 2)** which Jo Penguilley co-ordinates.

We began planning and preparing for Christmas and decided to go all out and have (deep breath) **Santa's Grotto / Café/ music stage and Xmas market and book fair** all the things we love! It was A LOT OF WORK but the weather was kind, if windy on the day and it was a huge success and hundreds of people came. This linked with our **Christmas tree sales** and wonderful **Eastville Park Calendar** and **A History of Eastville Park** booklet provided us with a fantastic fundraising boost.

Throughout 2023 and into 2024 we have continued to try to keep the local community aware of our activities and dreams with regular "**Parkie**" articles in the Fishponds Voice thank you Ken for always making space for us.

Friends of Eastville Park are currently looking for new trustees and also people to be actively involved with Friends of Eastville Park projects.

New Year 2024

We were awarded 5 stars for our kitchen Food Hygiene rating

The Community Hub will be hosting Saturday morning **Yoga classes** from April and **Mindfulness** sessions from September. We have been chosen as the venue for **Bristol City Council's 12 week Gardening and Horticulture Course Level 1** commencing in mid-April. All the regular events, workshops, food club, meetings, film club, singing, corporate days, parties, album lunches etc will also continue managed so perfectly by Andy Gee.



We are so grateful for all the volunteers who have made events happen, too many to name here and to all the wonderful people who have come and been part of this unique journey. My highlight was seeing so many people coming to Santa's Grotto. What was yours?

Financial Review

The charity had a deficit of £19,972 during the year on unrestricted funds (2023 surplus of £45,829). This was due to spending of funds previously raised, in accordance with the charitable objects. On an ongoing basis, expenditure is limited to available funds for each area of work, and the charity has no significant long term commitments; therefore the trustees are satisfied that the charity is a going concern, and will continue to be for the foreseeable future.

Reserves Policy

The trustees have established a policy to provide for any sudden and unexpected loss of income, whereby the unrestricted funds should equal at least three and six months of core running costs, which equates to around £7,500. At the balance sheet date the free cash reserves amounted to £25,857 (2023 £45,829): therefore £7,500 of this has been designated as a Contingency Fund.

Statement of Responsibilities of the Trustees

Trustees are required to prepare financial statements for each financial year, which give a true and fair view of the state of affairs of the charity and the incoming resources and application of resources, including the net income or expenditure, of the charity for the year. In preparing those financial statements the trustees are required to:

- Select suitable accounting policies and then apply them consistently;
- Observe the methods and principles in the applicable Charities SORP;
- Make judgements and estimates that are reasonable and prudent;
- State whether applicable accounting standards and statements of recommended practice have been followed, subject to any material departures disclosed and explained in the financial statements; and
- Prepare the financial statements on the going concern basis unless it is inappropriate to presume that the charity will continue in operation.

The trustees are responsible for keeping proper accounting records which disclose with reasonable accuracy at any time the financial position of the charity and which enable them to ensure that the financial statements comply with the Charities Act 2011 and the applicable Charities (Accounts and Reports) Regulations.

The trustees are also responsible for safeguarding the assets of the charity and hence for taking reasonable steps for the prevention and detection of fraud and other irregularities. The trustees confirm that to the best of their knowledge there is no information relevant to the Independent Examination of which the Examiner is unaware.

The trustees also confirm that they have taken all necessary steps to ensure that they themselves are aware of all relevant financial information and that this information has been communicated to the Examiner.

Approved by the trustees on 15th December 2024 and signed on their behalf by:



..... Sarah West, Trustee



..... Jo Edkins, Trustee

Independent examiner's report to the trustees of Friends of Eastville Park for the year to 31st March 2024

I report on the accounts of the Charitable Incorporated Organisation for the period ending 31st March 2024 which are set out on pages 9 to 15.

Responsibilities and basis of report

As the trustees of the Charity, you are responsible for the preparation of the accounts in accordance with the requirements of the Charities Act 2011 ('the Act').

I report in respect of my examination of the Charity's accounts carried out under section 145 of the 2011 Act and in carrying out my examination I have followed all the applicable directions given by the Charity Commission under section 145(5)(b) of the Act.

Independent examiner's statement

I have completed my examination. I confirm that no material matters have come to my attention in connection with the examination giving me cause to believe:

1. accounting records were not kept in respect of the Charity as required by section 130 of the Act; or
2. the accounts do not accord with those records; or
3. the accounts do not comply with the applicable requirements concerning the form and content of accounts set out in the Charities (Accounts and Reports) Regulations 2008 other than any requirement that the accounts give a true and fair view which is not a matter considered as part of an independent examination.

I have no concerns and have come across no other matters in connection with the examination to which attention should be drawn in this report in order to enable a proper understanding of the accounts to be reached.



.....
23rd December 2024

Rupert Taylor
5 Mount Pleasant
Millbrook
Torpoint
Cornwall PL10 1BH

Friends of Eastville Park
Statement of Financial Activities
Year to 31st March 2024

		Restricted funds	Unrestricted funds	Total funds	Total funds
		Year to 31/03/24	Year to 31/03/24	Year to 31/03/24	13/07/22 to 31/03/23
		£	£	£	£
	Notes				[see Note 13]
Income:					
Donations and legacies	[2]	-	500	500	65,137
Charitable activities	[3]	13,890	21,081	34,971	16,018
Other trading activities	[4]	-	10,145	10,145	975
Total Income		13,890	31,725	45,615	82,130
Expenditure:					
Expenditure on raising funds	[5]	-	6,183	6,183	600
Charitable activities	[6]	17,172	45,515	62,688	29,396
Total Expenditure		17,172	51,698	68,870	29,996
Net Income / (Expenditure)		(3,282)	(19,972)	(23,255)	52,134
Transfers between funds				-	-
Net Movement in Funds		(3,282)	(19,972)	(23,255)	52,134
Total funds brought forward		6,304	45,829	52,134	-
Total funds carried forward		3,022	25,857	28,879	52,134


Friends of Eastville Park

Balance Sheet


As at 31st March 2024

	Notes	2024 £	2023 £
Fixed Assets	[7]	-	-
Current Assets			
Cash at bank and on hand		29,488	52,172
Debtors and prepayments	[8]	2,518	358
		<u>32,006</u>	<u>52,530</u>
Current Liabilities			
Creditors and accruals	[9]	3,128	396
Total Current Liabilities		<u>3,128</u>	<u>396</u>
Net Current Assets		<u>28,879</u>	<u>52,134</u>
Net Assets		<u>28,879</u>	<u>52,134</u>
The funds of the charity:			
Unrestricted funds:			
General funds	[10]	18,357	38,329
Designated funds	[10]	7,500	7,500
Restricted funds	[10]	3,022	6,304
		<u>28,879</u>	<u>52,134</u>

Approved by the trustees on 15th December 2024 and signed on their behalf by:



.....
Sarah West



.....
Jo Edkins

Friends of Eastville Park

Notes to the Accounts

Year to 31st March 2024

[1] Principal Accounting Policies

The principal accounting policies adopted in the preparation of the financial statements are set out below.

(a) Basis of preparation

The financial statements have been prepared in accordance with the Accounting and Reporting by Charities: Statement of Recommended Practice applicable to charities preparing their accounts in accordance with the Financial Reporting Standard applicable in the UK and Republic of Ireland (FRS 102) (effective 1 January 2019), and the Charities Act 2011.

Friends of Eastville Park meets the definition of a public benefit entity under FRS 102. Assets and liabilities are initially recognised at historical cost or transaction value unless otherwise stated in the relevant accounting policy note(s).

(b) Preparation of the accounts on a going concern basis

The charity's balance sheet at 31st March 2024 is in surplus, and funding has been secured for upcoming activities of the charity. No activities are planned without income to support them. Therefore the trustees are satisfied that the charity remains a going concern on an ongoing basis.

(c) Income

Income is recognised when the charity has entitlement to the funds, any performance conditions attached to the items of income have been met, it is probable that the income will be received and the amount can be measured reliably.

Income from grants is recognised when the charity has entitlement to the funds, any performance conditions attached to the grants have been met, it is probable that the income will be received and the amount can be measured reliably and is not deferred.

Income received in advance of activities is deferred until the criteria for income recognition have been met.

(d) Donated services and facilities

Donated professional services and facilities are recognised as income when the charity has control over the item, any conditions associated with the donated item have been met, the receipt of economic benefit from the use by the charity is probable and that economic benefit can be measured reliably. There were no such donations during the year in question. In accordance with the Charities SORP (FRS 102), the general volunteer time of trustees and volunteers is not recognised with any monetary value

(e) Interest receivable

Interest on funds held on deposit is included when receivable and the amount can be measured reliably by the charity; this is normally upon notification of the interest paid or payable by the Bank.

(f) Fund Accounting

[i] Unrestricted funds are available for use at the discretion of the trustees in furtherance of the general objectives of the charity.

[ii] Designated funds are unrestricted funds set aside by the Management Committee for particular purposes.

[iii] Restricted funds are subjected to restrictions on their expenditure imposed by the donor or through the terms of an appeal.

(g) Expenditure

Expenditure is recognised once there is a legal or constructive obligation to make a payment to a third party, it is probable that settlement will be required and the amount of the obligation can be measured reliably. Expenditure is classified under the cost against the activity for which the expenditure was incurred, under the following activity headings:

[i] Costs of raising funds comprise the costs associated with attracting voluntary income and the costs of trading for fundraising purposes. There were no such costs during the year in question.

[ii] Charitable expenditure comprises those costs incurred by the charity in the delivery of its activities and services for its beneficiaries. It includes both costs that can be allocated directly to such activities, and those costs of an indirect nature necessary to support them.

[iii] Other expenditure represents those items not falling into any other heading. There were no such costs during the year in question.

(h) Allocation of support costs

Support costs are those functions that assist the work of the charity but do not directly undertake charitable activities. These include office costs, finance, personnel, payroll and governance costs which support the charity's charitable activities.

(i) Taxation

The charity is exempt from tax on income and gains falling within section 505 of the Taxes Act 1988 or Section 252 of the Taxation of Chargeable Gains Act 1992 to the extent that these are applied to its charitable objects.

(j) Fixed Assets

Tangible fixed assets are written off over the expected useful life of the asset, at 25% per annum on the reducing balance method. Individual items costing less than £500 are not treated as fixed assets.

Friends of Eastville Park
Notes to the Accounts (continued)
Year to 31st March 2024

(k) Debtors

Trade and other debtors are recognised at the settlement amount due after any trade discount offered.

(l) Cash at bank and in hand

Cash at bank and cash in hand includes cash and short term highly liquid investments with a short maturity of three months or less from the date of acquisition or opening of the account.

(m) Creditors

Creditors are recognised where the charity has a present obligation resulting from a past event that will probably result in the transfer of funds to a third party and the amount due to settle the obligation can be measured or estimated reliably. Creditors are normally recognised at their settlement amount after allowing for any trade discounts due.

[2] <u>Income from donations</u>	2024			2023		
	Restricted £	Unrestricted £	Total £	Restricted £	Unrestricted £	Total £
Donation from Friends of Eastville Park unincorporated association	-	-	-	16,581	47,036	63,617
Other donations	-	500	500	-	1,520	1,520
	<u>-</u>	<u>500</u>	<u>500</u>	<u>16,581</u>	<u>48,555</u>	<u>65,137</u>

[3] <u>Income from charitable activities</u>	2024			2023		
	Restricted £	Unrestricted £	Total £	Restricted £	Unrestricted £	Total £
<u>Grants:</u>						
Quartet Community Foundation	-	-	-	4,500	-	4,500
Grateful Society	5,000	-	5,000	-	-	4,500
People's Health Trust	8,890	-	8,890	-	-	4,500
Other grants	-	-	-	250	-	250
Total grants	<u>13,890</u>	<u>-</u>	<u>13,890</u>	<u>4,750</u>	<u>-</u>	<u>4,750</u>
Lettings	-	14,519	14,519	-	6,089	6,089
Fees for activities	-	560	560	-	987	987
Sales of refreshments	-	6,002	6,002	-	4,192	4,192
Total income from charitable activities	<u>13,890</u>	<u>21,081</u>	<u>34,971</u>	<u>4,750</u>	<u>11,268</u>	<u>16,018</u>

The charity received no government grants during the period (2023 nil).

[4] <u>Other income</u>	2024			2023		
	Restricted	Unrestricted	Total	Restricted	Unrestricted	Total
Income from trading activities	-	10,145	10,145	-	975	975
	<u>-</u>	<u>10,145</u>	<u>10,145</u>	<u>-</u>	<u>975</u>	<u>975</u>

[5] <u>Expenditure on raising funds</u>	2024	2023
Costs of non-charitable trading activities	6,183	600

Friends of Eastville Park
Notes to the Accounts (continued)
Year to 31st March 2024

[6] Analysis of expenditure on charitable activities

	2024	2023
<u>Direct costs</u>	£	£
Activity costs	6,630	1,588
Repairs and maintenance	5,803	7,910
Park improvements*	33,795	14,000
Salaries and pensions	7,871	-
Recruitment	108	-
Travel expenses	472	-
Premises costs	4,490	1,430
Donation to bowling club	-	1,108
Donation to Bristol Refugee Festival	-	556
Costs of refreshments	2,673	2,371
	<hr/>	<hr/>
Total direct costs	61,842	28,964
<u>Support costs</u>	£	£
Accountancy	142	240
Fee for Independent Examination	224	192
Stationery and printing	34	-
Insurance	283	-
Legal and professional fees	163	-
	<hr/>	<hr/>
Total support costs	846	432
	<hr/>	<hr/>
Total charitable expenditure	62,688	29,396

As the charity only undertakes one kind of activity, support costs have not been apportioned.

* The park improvements are on behalf of Bristol City Council, who retain ownership of and responsibility for the assets in question; therefore they are not treated as capital expenditure for the charity.

[7] Tangible Fixed Assets

	Equipment 2024
	£
<u>Cost</u>	
Balance brought forward	-
Additions during the year	-
	<hr/>
	-
<u>Depreciation</u>	
Balance brought forward	-
Charge for the year	-
	<hr/>
	-
	<hr/>
Net Book Value at 31/03/24	-
Net Book Value at 31/03/23	-

[8] Debtors and prepayments

	2024	2023
	£	£
Trade debtors	2,400	-
Prepayments	118	358
	<hr/>	<hr/>
	2,518	358

Friends of Eastville Park
Notes to the Accounts (continued)
Year to 31st March 2024

[9] <u>Creditors</u>	2024	2023
Amounts due within 12 months:	£	£
Trade creditors	2,718	-
Tax and National Insurance	31	-
Accruals	378	396
	<hr/>	<hr/>
	3,128	396

[10] <u>Movements in Funds 2023-24</u>	Balance at 31/03/2023	Income	Expenditure	Transfers	Balance at 31/03/2024
<u>Restricted funds:</u>					
Defibrillator	2,183	-	(1,241)	-	942
Park bench	350	-	-	-	350
Warm Spaces	3,351	-	(3,351)	-	-
Quartet Nature Subgroup grant	420	-	(420)	-	-
Grateful Society	-	5,000	(3,421)	-	1,579
People's Health Trust	-	8,890	(8,739)	-	151
	<hr/>	<hr/>	<hr/>	<hr/>	<hr/>
Total Restricted Funds:	6,304	13,890	(17,172)	-	3,022
<u>Unrestricted Funds:</u>					
<u>Designated Funds:</u>					
Contingency Fund	7,500	-	-	-	7,500
	<hr/>	<hr/>	<hr/>	<hr/>	<hr/>
Total Designated Funds:	7,500	-	-	-	7,500
<u>General Funds</u>	38,329	31,725	(51,698)	-	18,357
	<hr/>	<hr/>	<hr/>	<hr/>	<hr/>
Total Unrestricted Funds:	45,829	31,725	(51,698)	-	25,857
	<hr/>	<hr/>	<hr/>	<hr/>	<hr/>
Total Funds:	52,134	45,615	(68,870)	-	28,879

Purposes of funds

The defibrillator and park bench funds were raised from the public for these purposes.

The Warm Spaces fund was to provide a warm and welcoming space in the Nissen Hut for local people impacted by the cost of living crisis and particularly the high cost of heating.

The Quartet Nature subgroup grant funded a group working to preserve and encourage the wildlife in the park.

The Grateful Society grant helps cover the cost of a part-time co-ordinator.

The People's Health Trust funds a "Creative group" and a "Food group".

The Contingency Fund exists to enable the charity to continue operations for three months in the event of any unexpected in drop in income.

[11] Payments to trustees and related party transactions

No trustees received remuneration during the year (2023 nil)

Two trustees received payments totalling £15,762 during the year (2023 four trustees received £7,337). These were all reimbursements of costs incurred in furtherance of the charity's objects.

There were no other related party transactions during the year.

[12] <u>Staff costs</u>	2024	2023
	£	£
Salaries	7,838	-
Employer pension	34	-
	<hr/>	<hr/>
	7,871	-

The average number of staff employed by the charity during the year was 1 (2023 nil) and the average full time equivalent was 0.3 (2023 nil).

The key management personnel of the charity are the trustees. There were no payments to key personnel during the year.

Friends of Eastville Park
Notes to the Accounts (continued)
Year to 31st March 2024

[13] Previous year comparisons

<u>Statement of Financial Activities 2022-23</u>	Restricted funds 13/07/22 to 31/03/23 £	Unrestricted funds 13/07/22 to 31/03/23 £	Total funds 13/07/22 to 31/03/23 £
Income:			
Donations and legacies	16,581	48,555	65,137
Charitable activities	4,750	11,268	16,018
Other trading activities	-	975	975
Total Income	21,331	60,798	82,130
Expenditure:			
Expenditure on raising funds	-	600	600
Charitable activities	15,027	14,369	29,396
Total Expenditure	15,027	14,969	29,996
Net Income / (Expenditure)	6,304	45,829	52,134
Transfers between funds	-	-	-
Net Movement in Funds	6,304	45,829	52,134
Total funds brought forward	-	-	-
Total funds carried forward	6,304	45,829	52,134

<u>Movements in Funds 2022-23</u>	Balance at 13/07/2022	Income	Expenditure	Transfers	Balance at 31/03/2023
<u>Restricted funds:</u>					
Defibrillator	-	2,231	(48)	-	2,183
Park bench	-	350	-	-	350
Warm Spaces	-	4,330	(979)	-	3,351
Quartet Nature Subgroup grant	-	420	-	-	420
Old swimming pool	-	5,000	(5,000)	-	-
Playpark	-	9,000	(9,000)	-	-
Total Restricted Funds:	-	21,331	(15,027)	-	6,304
<u>Unrestricted Funds:</u>					
Designated Funds:					
Contingency Fund	-	-	-	7,500	7,500
Total Designated Funds:	-	-	-	7,500	7,500
<u>General Funds</u>	-	60,798	(14,969)	(7,500)	38,329
Total Unrestricted Funds:	-	60,798	(14,969)	-	45,829
Total Funds:	-	82,130	(29,996)	-	52,134

FRIENDS OF EASTVILLE PARK

England & Wales - Charity number 1199637

Accounts

**Friends of Eastville Park
Trustees Report and Financial Statements
13th July 2022 to 31st March 2023**

Charity number: 1199637

Friends of Eastville Park
Trustees' Annual Report
13th July 2022 to 31st March 2023

CONTENTS

Page	
2.	Reference and Administrative Information
3.	Structure, Governance and Management
3.	Objects and Activities
3.	Achievements and Performance
5.	Financial Review
6.	Statement of Responsibilities of Trustees
7.	Independent Examiner's Report
8.	Statement of Financial Activities
9.	Balance Sheet
10.	Notes to the Accounts

Reference and Administrative Information

Charity name:	Friends of Eastville Park
Charity registration number:	1199637
Registered Office and Operational Address:	429 Fishponds Road, Bristol BS16 0GW

Trustees 2022-23

Sarah West (chair)
Gillian Calloway
Andrew Gee
Joseph Mckenna
Maureen Lewis
Christina Quinnell
Josephine Edkins
Ian Player
Martin Cordey
Christina Stokes

Structure, Governance and Management

The organisation is a Charitable Incorporated Organisation, incorporated and registered as a charity on 13th July 2022. Its governing document is the Constitution dated 6th July 2022. The charity has taken over activities previously carried out by the Friends of Eastville Park unincorporated association, which had been operating since June 2016.

Recruitment and Appointment of Trustees

New trustees are appointed for a term of three years by a resolution passed at a meeting of the charity trustees. In selecting individuals for appointment as charity trustees, the charity trustees have regard to the skills, knowledge and experience needed for the effective administration of the CIO. The board will seek to recruit new trustees to be representative of the area which the charity serves.

Objects and Activities

Charitable Objects

For the benefit of the inhabitants of Eastville and the surrounding area (“the area of benefit”) to provide or assist in the provision of facilities for recreation and other leisure time occupation in the interests of social welfare with the object of improving their conditions of life for the inhabitants of the area of benefit in particular but not exclusively by the preservation, promotion, support, assistance and improvement of Eastville Park.

Public Benefit

The charity delivers public benefit by organising and carrying out activities in Eastville Park, such as environmental works and cultural and sporting events, as detailed in “Achievements and Performance” below. These activities are open to all members of the public and are offered either at low cost or free of charge.

The Trustees are aware of the requirement of public benefit and seek to implement the Charity Commissioners' guidance on public benefit.

Achievements and Performance

July

Friends of Eastville Park CIO commenced operations, and continued to maintain momentum with Bristol City Council to move **play area improvements** forward. **Aid Box Community** held their annual picnic in our beautiful garden. A lovely **Herbal Walk** was well attended and led by local resident Helen White. **Eastville Park Bowls Club** were in full swing with home and away games and the occasional win!

August

Play days aplenty filled the garden of the Community Hub with laughter, creativity and ideas from **Imayla, Creative Youth Network, Bridging Histories Workshops and a local nursery picnic**. **People’s University of Fishponds** brought their eclectic and educational programme to the Community Hub starting with an evening exploring “Our special relationship with dogs”! You are so welcome. Many enjoyed **A Midsummer Night’s Dream** in The Old Swimming Pool.

September

Things started getting seriously busy for us at the Hub with not only children and adult parties, we still had all the usual groups continuing to use the space. We were joined by the lovely **Bluebell Care** group running groups for parents experiencing mental health issues in the first 2 years of their child's life. We also hosted meetings for **Bristol Parks Forum** and **Bristol Community Land Trust**. **Eastville Park Food Club** was going from strength to strength. **Tokyo World** landed again for the youth, we celebrated **Chilean Independence Day**, **Capoeira** became a regular class along with **Carers Walk and Talk** sessions, **Eastville Park Film Club** enjoyed "Pride", and regular **Morning Mobility / exercise classes**.

October

On Saturday 8th October Friends of Eastville Park held an **Open Morning at the Community Hub** and we had a chance to tell the small number of local people who came who we are, what has been happening, and ways of becoming involved in the **Pop Up café** or **Food Club**.

November / December

This was the month that Jannah Warlow brought her **Songbirds** classes to the hub, a singing group where tunes are learned and sung on the night, usually in parts and rounds. A beautiful and melodious way to spend a few hours on the dark Winter nights, a big success. Speaking of birds, it was lovely to read the resume in February's **Fishponds Voice** of how **108** different bird species have been seen this year on "the patch" including a **yellow browed warbler** and **2 little grebes**. 32 more species than last year!! **Eastville Park calendar** was on sale again and despite soaring printing costs was able to make a profit. Thanks Mo and Paul and all the amazing photographers. We teamed up with **Frenchay Christmas Tree Farm** again and sold over a 100 trees bringing in some more funding for projects to benefit park users. It was so lovely to welcome everyone into the garden around the fire for mince pies, mulled wine and carols and to listen to the fabulous **La Madrastra** as Santa watched over us from the roof.

Throughout 2022 we have continued to try to keep the local community aware of our activities and dreams with regular "**Parkie**" articles in the **Fishponds Voice**. Thank you Ken for always making space for us.

January

We were successful in obtaining funding from **Bristol City Council** via **Quartet** to open the Nissen Hut Community Hub as a **Warm and Welcoming Space** on Mondays and Thursdays from 10 til 2. These sessions were coordinated and promoted by Jo Penguilly, an experienced community development worker with a range of previous roles in which she has shown her understanding of the difficult issues affecting many people today. The space in Eastville Park became somewhere for people to **keep warm, socialise** and **access support related to the cost of living** as well as to relax and participate in activities and have a cup of tea and a lunch. This is a really exciting new venture for us and we plan to keep this going beyond this current project's lifetime as we have been successful in obtaining further funding for a specific session for older people in the community.

February / March

We carried on with many of the ongoing groups, classes, services and private bookings. **Songbirds, Capoeira, Eastville Food Club, Roots to Wellbeing, Nordik Walking, Eastville Park Film Club** and the uniqueness of the **People's University of Fishponds** is now fully embedded with their **eclectic entertaining Sunday evening programme** at

the Nissen Hut. FoEP were able to support the Wildlife Sub-group committee by providing the hut for meetings and planning sessions. We sorted our WiFi issues with a kind offer from a local supporter and we have plans in the pipeline for solar lighting along the path to the Community Hub if the grant funding is successful.

Financial Review

The charity has a surplus of £27,829 on unrestricted funds after allowing for designated funds. On an ongoing basis, expenditure is limited to available funds for each area of work, and the charity has no significant long term commitments; therefore the trustees are satisfied that the charity is a going concern, and will continue to be for the foreseeable future.

Reserves Policy

The trustees have established a policy to provide for any sudden and unexpected loss of income, whereby the unrestricted funds should equal at least three and six months of running costs, which equates to around £7,500. At the balance sheet date the free cash reserves amounted to £35,329: therefore £7,500 of this has been designated as a Contingency Fund.

Statement of Responsibilities of the Trustees

Trustees are required to prepare financial statements for each financial year, which give a true and fair view of the state of affairs of the charity and the incoming resources and application of resources, including the net income or expenditure, of the charity for the year. In preparing those financial statements the trustees are required to:

- Select suitable accounting policies and then apply them consistently;
- Observe the methods and principles in the applicable Charities SORP;
- Make judgements and estimates that are reasonable and prudent;
- State whether applicable accounting standards and statements of recommended practice have been followed, subject to any material departures disclosed and explained in the financial statements; and
- Prepare the financial statements on the going concern basis unless it is inappropriate to presume that the charity will continue in operation.

The trustees are responsible for keeping proper accounting records which disclose with reasonable accuracy at any time the financial position of the charity and which enable them to ensure that the financial statements comply with the Charities Act 2011 and the applicable Charities (Accounts and Reports) Regulations.

The trustees are also responsible for safeguarding the assets of the charity and hence for taking reasonable steps for the prevention and detection of fraud and other irregularities. The trustees confirm that to the best of their knowledge there is no information relevant to the Independent Examination of which the Examiner is unaware.

The trustees also confirm that they have taken all necessary steps to ensure that they themselves are aware of all relevant financial information and that this information has been communicated to the Examiner.

Approved by the trustees on 1st August 2023 and signed on their behalf by:



..... Sarah West, Trustee



..... Jo Edkins, Trustee

Independent examiner's report to the trustees of Friends of Eastville Park for the period 13th July 2022 to 31st March 2023

I report on the accounts of the Charitable Incorporated Organisation for the period ending 31st March 2023 which are set out on pages 8 to 13.

Responsibilities and basis of report

As the trustees of the Charity, you are responsible for the preparation of the accounts in accordance with the requirements of the Charities Act 2011 ('the Act').

I report in respect of my examination of the Charity's accounts carried out under section 145 of the 2011 Act and in carrying out my examination I have followed all the applicable directions given by the Charity Commission under section 145(5)(b) of the Act.

Independent examiner's statement

I have completed my examination. I confirm that no material matters have come to my attention in connection with the examination giving me cause to believe:

1. accounting records were not kept in respect of the Charity as required by section 130 of the Act; or
2. the accounts do not accord with those records; or
3. the accounts do not comply with the applicable requirements concerning the form and content of accounts set out in the Charities (Accounts and Reports) Regulations 2008 other than any requirement that the accounts give a true and fair view which is not a matter considered as part of an independent examination.

I have no concerns and have come across no other matters in connection with the examination to which attention should be drawn in this report in order to enable a proper understanding of the accounts to be reached.

.....
2nd August 2023

Rupert Taylor
Easton Business Centre
Felix Road
Bristol BS5 0HE

Friends of Eastville Park

Statement of Financial Activities

13th July 2022 to 31st March 2023

		Restricted funds	Unrestricted funds	Total funds
		13/07/22 to 31/03/23	13/07/22 to 31/03/23	13/07/22 to 31/03/23
		£	£	£
	Notes			
Income:				
Donations and legacies	[2]	16,581	48,555	65,137
Charitable activities	[3]	4,750	11,268	16,018
Other trading activities	[4]	-	975	975
Total Income		21,331	60,798	82,130
Expenditure:				
Expenditure on raising funds	[5]	-	600	600
Charitable activities	[6]	15,027	14,369	29,396
Total Expenditure		15,027	14,969	29,996
Net Income / (Expenditure)		6,304	45,829	52,134
Transfers between funds				-
Net Movement in Funds		6,304	45,829	52,134
Total funds brought forward		-	-	-
Total funds carried forward		6,304	45,829	52,134

Friends of Eastville Park

Balance Sheet

As at 31st March 2023

	Notes	2023 £
Fixed Assets	[7]	-
Current Assets		
Cash at bank and on hand		52,172
Debtors and prepayments	[8]	358
		<hr/>
		52,530
Current Liabilities		
Creditors and accruals	[9]	396
		<hr/>
Total Current Liabilities		396
		<hr/>
Net Current Assets		52,134
		<hr/>
Net Assets		52,134

The funds of the charity:

Unrestricted funds:

General funds	[8]	38,329
Designated funds	[8]	7,500

Restricted funds	[8]	6,304
		<hr/>
		52,134

Approved by the trustees on 1st August 2023 and signed on their behalf by:



Sarah West



Jo Edkins

Friends of Eastville Park

Notes to the Accounts

13th July 2022 to 31st March 2023

[1] Principal Accounting Policies

The principal accounting policies adopted in the preparation of the financial statements are set out below.

(a) Basis of preparation

The financial statements have been prepared in accordance with the Accounting and Reporting by Charities: Statement of Recommended Practice applicable to charities preparing their accounts in accordance with the Financial Reporting Standard applicable in the UK and Republic of Ireland (FRS 102) (effective 1 January 2015), as amended by Update Bulletin 1 issued on 2nd February 2016, and the Charities Act 2011.

Friends of Eastville Park meets the definition of a public benefit entity under FRS 102. Assets and liabilities are initially recognised at historical cost or transaction value unless otherwise stated in the relevant accounting policy note(s).

(b) Preparation of the accounts on a going concern basis

The charity's balance sheet at 31st March 2023 is in surplus, and funding has been secured for upcoming activities of the charity. No activities are planned without income to support them. Therefore the trustees are satisfied that the charity remains a going concern on an ongoing basis.

(c) Income

Income is recognised when the charity has entitlement to the funds, any performance conditions attached to the items of income have been met, it is probable that the income will be received and the amount can be measured reliably.

Income from grants is recognised when the charity has entitlement to the funds, any performance conditions attached to the grants have been met, it is probable that the income will be received and the amount can be measured reliably and is not deferred.

Income received in advance of activities is deferred until the criteria for income recognition have been met.

(d) Donated services and facilities

Donated professional services and facilities are recognised as income when the charity has control over the item, any conditions associated with the donated item have been met, the receipt of economic benefit from the use by the charity is probable and that economic benefit can be measured reliably. There were no such donations during the year in question. In accordance with the Charities SORP (FRS 102), the general volunteer time of trustees and volunteers is not recognised with any monetary value

(e) Interest receivable

Interest on funds held on deposit is included when receivable and the amount can be measured reliably by the charity; this is normally upon notification of the interest paid or payable by the Bank.

(f) Fund Accounting

[i] Unrestricted funds are available for use at the discretion of the trustees in furtherance of the general objectives of the charity.

[ii] Designated funds are unrestricted funds set aside by the Management Committee for particular purposes.

[iii] Restricted funds are subjected to restrictions on their expenditure imposed by the donor or through the terms of an appeal.

(g) Expenditure

Expenditure is recognised once there is a legal or constructive obligation to make a payment to a third party, it is probable that settlement will be required and the amount of the obligation can be measured reliably. Expenditure is classified under the cost against the activity for which the expenditure was incurred, under the following activity headings:

[i] Costs of raising funds comprise the costs associated with attracting voluntary income and the costs of trading for fundraising purposes. There were no such costs during the year in question.

[ii] Charitable expenditure comprises those costs incurred by the charity in the delivery of its activities and services for its beneficiaries. It includes both costs that can be allocated directly to such activities, and those costs of an indirect nature necessary to support them.

[iii] Other expenditure represents those items not falling into any other heading. There were no such costs during the year in question.

(h) Allocation of support costs

Support costs are those functions that assist the work of the charity but do not directly undertake charitable activities. These include office costs, finance, personnel, payroll and governance costs which support the charity's charitable activities.

(i) Taxation

The charity is exempt from tax on income and gains falling within section 505 of the Taxes Act 1988 or Section 252 of the Taxation of Chargeable Gains Act 1992 to the extent that these are applied to its charitable objects.

(j) Fixed Assets

Tangible fixed assets are written off over the expected useful life of the asset, at 25% per annum on the reducing balance method. Individual items costing less than £500 are not treated as fixed assets.

Friends of Eastville Park
Notes to the Accounts (continued)
13th July 2022 to 31st March 2023

(k) Debtors

Trade and other debtors are recognised at the settlement amount due after any trade discount offered.

(l) Cash at bank and in hand

Cash at bank and cash in hand includes cash and short term highly liquid investments with a short maturity of three months or less from the date of acquisition or opening of the account.

(m) Creditors

Creditors are recognised where the charity has a present obligation resulting from a past event that will probably result in the transfer of funds to a third party and the amount due to settle the obligation can be measured or estimated reliably. Creditors are normally recognised at their settlement amount after allowing for any trade discounts due.

[2] <u>Income from donations</u>	2023	2023	2023
	Restricted £	Unrestricted £	Total £
Donation from Friends of Eastville Park unincorporated association	16,581	47,036	63,617
Other donations	-	1,520	1,520
	<hr/>	<hr/>	<hr/>
	16,581	48,555	65,137

[3] <u>Income from charitable activities</u>	2023	2023	2023
	Restricted £	Unrestricted £	Total £
<u>Grants:</u>			
Quartet Community Foundation	4,500	-	4,500
Other grants	250	-	250
	<hr/>	<hr/>	<hr/>
Total grants	4,750	-	4,750
Lettings	-	6,089	6,089
Fees for activities	-	987	987
Sales of refreshments	-	4,192	4,192
	<hr/>	<hr/>	<hr/>
Total income from charitable activities	4,750	11,268	16,018

The charity received no government grants during the period. However, the funds donated from the unincorporated included a £9,000 grant from Bristol City Council.

[4] Other income

Income from trading activities	-	975	975
	<hr/>	<hr/>	<hr/>
	-	975	975

[5] Expenditure on raising funds

Costs of non-charitable trading activities	600
--	-----

Friends of Eastville Park
Notes to the Accounts (continued)
13th July 2022 to 31st March 2023

[6] Analysis of expenditure on charitable activities

	2023
<u>Direct costs</u>	£
Activity costs	1,588
Repairs and maintenance	7,910
Park improvements*	14,000
Premises costs	1,430
Donation to bowling club	1,108
Donation to Bristol Refugee Festival	556
Costs of refreshments	2,371
	<hr/>
Total direct costs	28,964
<u>Support costs</u>	£
Accountancy	240
Fee for Independent Examination	192
	<hr/>
Total support costs	432
	<hr/>
Total charitable expenditure	29,396

As the charity only undertakes one kind of activity, support costs have not been apportioned.

* The park improvements are on behalf of Bristol City Council, who retain ownership of and responsibility for the assets in question; therefore they are not treated as capital expenditure for the charity.

[7] Tangible Fixed Assets

	Equipment 2023
	£
<u>Cost</u>	
Balance brought forward	-
Additions during the year	-
	<hr/>
	-
<u>Depreciation</u>	
Balance brought forward	-
Charge for the year	-
	<hr/>
	-
	<hr/>
Net Book Value	-

[8] Debtors and prepayments

	2023
	£
Prepayments	358
	<hr/>
	358

[9] Creditors

	2023
	£
Amounts due within 12 months:	
Accruals	396
	<hr/>
	396

Friends of Eastville Park
Notes to the Accounts (continued)
13th July 2022 to 31st March 2023

[8] <u>Movements in Funds 2022-23</u>	Balance at 13/07/2022	Income	Expenditure	Transfers	Balance at 31/03/2023
<u>Restricted funds:</u>					
Defibrillator	-	2,231	(48)	-	2,183
Park bench	-	350	-	-	350
Warm Spaces	-	4,330	(979)	-	3,351
Quartet Nature Subgroup grant	-	420	-	-	420
Old swimming pool	-	5,000	(5,000)	-	-
Playpark	-	9,000	(9,000)	-	-
Total Restricted Funds:	-	21,331	(15,027)	-	6,304
<u>Unrestricted Funds:</u>					
<u>Designated Funds:</u>					
Contingency Fund	-	-	-	7,500	7,500
Total Designated Funds:	-	-	-	7,500	7,500
<u>General Funds</u>	-	60,798	(14,969)	(7,500)	38,329
Total Unrestricted Funds:	-	60,798	(14,969)	-	45,829
Total Funds:	-	82,130	(29,996)	-	52,134

Purposes of funds

The defibrillator and park bench funds were raised from the public for these purposes.

The Warm Spaces fund is to provide a warm and welcoming space in the Nissen Hut for local people impacted by the cost of living crisis and particularly the high cost of heating. £4,080 of this was a grant from Quartet Community Foundation

The Old Swimming Pool fund was a grant from Ikea for works in the old swimming pool in Eastville Park.

The Playpark fund was a grant from Bristol City Council to construct a playpark in Eastville Park.

The Contingency Fund exists to enable the charity to continue operations for three months in the event of any unexpected drop in income.

[9] Payments to trustees and related party transactions

No trustees received remuneration during the year.

Four trustees received expense payments totalling £7,337 during the year. These were reimbursements of costs incurred in furtherance of the charity's objects.

There were no other related party transactions during the year.

[10] Staffing

The charity employed no staff during the year.

The key management personnel of the charity are the trustees. There were no payments to key personnel during the year.