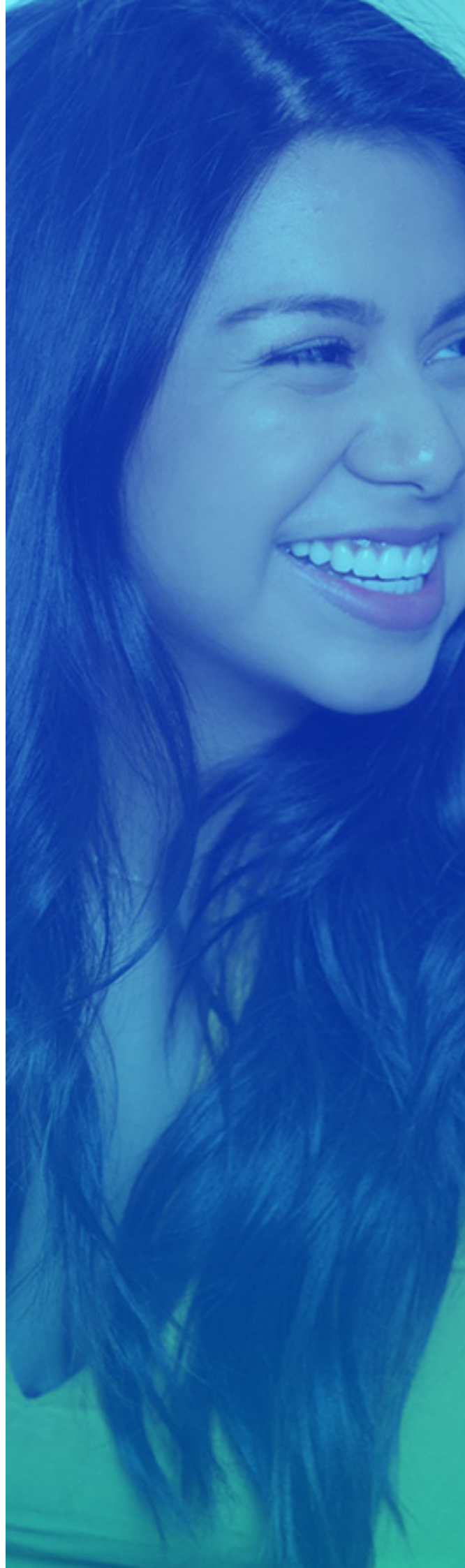


Spire Foundation

Annual Report 2025



Spir Foundation Annual Report

AGM 2025

Contents

Chair's report	3
Secretary's report	5
Treasurer's report	7
Accounts	8

Activities and Objectives and Achievements over the relevant period:

The Foundation's Objectives over the course of the relevant period had been fourfold:

1. Achieve an external membership structure for individuals and organisations.
2. Widen the scope of fundraising methods/activities.
3. Support at least a further 5 beneficiaries beyond those committed to in the previous year.
4. Secure at least one new trustee.

External Membership:

This has not been achieved. The focus of the Foundation has been on bringing down cash reserves by supporting further beneficiaries. There needs to be an active move towards securing this aim over the coming 12 months, in my view. Whilst we have not achieved this aim, we have widened the source of our potential beneficiaries. We have worked closely with Ison Harrison and Lawyers Who Care in that regard.

Fundraising Methods/Activities:

We have continued our fundraising efforts. James, Dave and Leigh completed a mammoth three-day trek through the Lakes last summer for example.

A sizeable team completed the Yorkshire 3 Peaks on 04 May 2025 in times ranging from 11 hours 28 minutes to 11 hours 25minutes. The just giving link for donations has been circulated again.

I also understand from Colin that a further member of Chambers has signed up for the regular donations through expenses which is excellent news and will have offset the loss of Sarah B in that regard following her appointment to the Bench.

Further beneficiaries

We have supported 8 beneficiaries over the course of the year. The details of those donations will be included in the treasures report for the Foundation AGM, in brief for the purposes of this report:

1. ATQ - £3500
2. Rosebank Primary (£1337.50)
3. Doorstep (£500)
4. Fieldhead Carr Training (2022) and software (£540 and £1000 (software) – yet to be invoiced)
5. Seacroft Primary School – Interactive Table (£7500 – finalised)
6. LWC mentee – laptop and suit for interviews.
7. Fresh Futures – 2 x laptops (having previously been a beneficiary of funds).

Gaining an additional trustee

The Foundation has lost two Trustees over the last 12 months (Jacqui and Sarah).

The Foundation needs to recruit a further two trustees – anybody interested in taking on the role or wanting to find out more information about the role please contact me or Colin to discuss.

Further beneficiaries

I will not be setting targets for the next 12 months as in January 2025, I will be stepping down as Chair of the Foundation at this AGM and absent any other volunteer I will be nominating Leigh as my replacement. I will remain as a Charitable Trustee.

The new Chair will then set targets at, or shortly after the Foundation's AGM.

Ash Lord
Chair, Spire Foundation
06 May 2025

Secretary's report AGM September 2025

Reports covering: August 2023 - July 2024 / August 2024 - July 2025

The Spire Foundation - Registered Charity 1199524
c/o Spire Barristers
3 St David's Court
Leeds
LS11 5QA

Current Chair	Ashley Lord.
Secretary	Leigh Royall
Treasurer	Colin Philpott
Other Trustees	Sarah Blackmore (Resigned December 2024)
	Liz Shaw
	Sharon Tappin
	Reagan Persaud

Meetings have been held on regular occasions, the most recent being 3rd February 2025.

The constitution provides as follows;

Not less than three nor more than five elected trustees, not more than one ex-officio trustee and not more than two nominated trustees.

There must be at least three charity trustees.

Officers and trustees are appointed in accordance with the constitution for terms of 1 year, renewable, for up to two years.

The object of the organisation remains as set out in the constitution;

A charity aimed at supporting vulnerable adults and children, who have learning or physical disabilities, or have experienced the care system, in the North of England. The North of England for these purposes refers to the geographical area from the counties of Lancashire and Cheshire in the west, across Greater Manchester, and covering Yorkshire, Derbyshire, Nottinghamshire, Humberside and Lincolnshire in the east. The charity has the aims of supplying those individuals with funds and support to enable them to advance themselves, through education such as the funding of courses or work placements, or other means including funds for equipment or assistive technology. This is in order to help them to improve their life outcomes, and their interactions with the care system where appropriate.

All trustees are due to retire and stand again if they so wish. The Foundation have also invited new Trustees to attend at the AGM if interested. Any new appointments, as officers or trustees need to be proposed and seconded by an existing officer or trustee,

AL intends to stand down as Chair of the Foundation. A new Chair will need to be appointed at the AGM.

The Chairs' report sets out the beneficiaries over the last two years.

The Treasurers report sets out the financial review over the last two years.

Leigh Royall
Secretary, Spire Foundation
06 May 2025

Treasurer's report AGM September 2021

Report covering 01 August 2023 - 31 July 2024

Treasurer's Report and Accounts

The Foundation had a good year with respect to our income. We are very grateful indeed to our regular contributors and their generous donations. These amounted to £11,579 in the year, down 12.3% on last years level.

We benefitted from the donations made at Spire Barristers' seminars, amounting to £141 and £207 from the Tuck box sales. We also received £214 in bank interest.

On the payments front, we made actual donations of £5,337.

We were pleased to give specific assistance to an individual through the Grimsby Doorstep charity amounting to £500.

We continued our support for Ask the Question and their after school tuition project to the tune of £3,500 which involved an element of 'catch up' from the previous year due to late starting of our standing order.

We made a donation of £1337 to Rosebank Primary School for two important areas. Dyslexia assessment materials and intervention programmes. Where the dyslexic profile uses 9 different tests which give a detailed profile of a pupil's strengths and challenges. This will help school identify and support the specific areas of difficulty in literacy learning. The portfolio also provides age standardised scores and advice around appropriate intervention. Also 3 text readers. These are designed to convert written text into spoken words, text-to-speech helps overcome the challenges faced by dyslexic readers by helping reduce anxiety and boosts self-confidence to help achieve better results and allow students read questions easily alongside their peers. The readers also support multiple languages which is essential as % of our pupils first language is not English.

We also committed to two amounts of expenditure of £6,000 and £540 where the projects were either delayed or final amounts awaited.

Bank charges were £60.

In short we received £12,140.36 and spent £5,397.50. We retain £18,205.26 to carry forward to the next financial year.

Colin Philpott
Treasurer, Spire Foundation
06 May 2025

Section A, Unrestricted funds		2023 / 24	2022 / 23 (13 Months)	
Receipts				
Net Membership Subscriptions	0.00		0.00	
Gift Aid	0.00		2,527.08	
Donations	11,578.92		13,201.09	
Miscellaneous + Tuck Box	206.60		297.76	
Events	141.22		463.08	
Raffles	0.00		850.00	
Bank Interest	213.62		54.96	
Total receipts	12,140.36		17,393.97	
Payments				
Administration	0.00		0.00	
Grants and Donations	5,337.50		9,074.43	
Equipment Provided	0.00		5,519.16	
Events	0.00		0.00	
Publicity	0.00		187.06	
Website	0.00		220.58	
Miscellaneous	0.00		0.00	
Bank Charges	60.00		50.00	
Total payments	5,397.50		15,051.23	
Net Receipts (Payments)	6,742.86		2,342.74	
Cash funds Transferred	11,462.40		9,119.66	
Cash funds this year end	18,205.26		11,462.40	
Section B, Restricted income funds				
The charity has no restricted income funds				
Section C, Endowment funds				
The charity has no endowment funds				
Section D, Statement of Assets and Liabilities at year end				
Cash funds	Unrestricted funds	Restricted funds	Unrestricted funds	Restricted funds
Caf Cash Bank account	7,928.59		6,387.22	
Cash	41.00	0.00	41.00	0.00
Deposit account	10,235.67		5,034.18	
Other account	0.00		0.00	
	18,205.26	0.00	11,462.40	0.00
Other monetary assets	0.00	0.00	0.00	0.00
Investment assets	0.00	0.00	0.00	0.00
Assets retained for the society's own use	0.00	0.00	0.00	0.00
Debtors	0.00	0.00	0.00	0.00
Liabilities - Funding and Underwritten by Trustees	0.00	0.00	0.00	0.00

Spire Foundation Annual Report

AGM 2025



**Spire
Foundation**