

ASH GREEN SCOUT GROUP

England & Wales - Charity number 1199314

Details

Status Registered

Legal form Other

Registered 2022-06-15

Register [View on the Charity Commission register](#)

Contact

Address 100 Punch Croft
New Ash Green
Longfield
Kent
DA3 8HS

Phone +447795147473

Email glv@ashgreenscouts.org.uk

Website www.ashgreenscouts.org.uk

Activities

Objects: TO PROMOTE THE DEVELOPMENT OF YOUNG PEOPLE IN ACHIEVING THEIR FULL PHYSICAL, INTELLECTUAL, SOCIAL AND SPIRITUAL POTENTIALS AS INDIVIDUALS AS RESPONSIBLE CITIZENS AND AS MEMBERS OF THEIR LOCAL, NATIONAL AND INTERNATIONAL COMMUNITIES.

Activities: The primary objective of the Group is to actively engage and support young people in their personal development, empowering them to make a positive contribution to society. The main activities of the Group are the provision of the Scouting programme for 6 to 14 year olds in New Ash Green, Kent and the immediate surrounding locality.

Classification

- **How:** Other Charitable Activities
- **What:** General Charitable Purposes, Economic/community Development/employment, Human Rights/religious Or Racial Harmony/equality Or Diversity, Other Charitable Purposes
- **Who:** Children/young People

Geography

- Kent

Finances

Period end	Income	Expenditure	Assets	Employees
2025-03-31	£34,913	£34,281	-	-
2024-03-31	£29,329	£44,501	-	-
2023-03-30	£26,768	£33,913	-	-

Trustees

Name	Role	Appointed
Louise Banks	Chair	2023-06-09
Alice Elizabeth Baker		2024-06-14
Casey Jane Davis Hughes		2025-07-01
Clare Hambleton		2023-06-09
Donald Peter Lewis		2023-06-09
Gillian Lewis		2023-06-09
Mark Jennings		2023-06-09
Michael Gordon Banks		2022-05-17
Mollie Louise Burr		2023-06-14

ASH GREEN SCOUT GROUP

England & Wales - Charity number 1199314

Accounts

Ash Green Scout Group

Trustees' Annual Report

*For the Financial Year ending 31st March 2025
and covering the period 01/04/2024 to 31/03/2025*

1 Reference and Administration Details

Charity Name:	Ash Green Scout Group
Charity Number:	1199314
Principal Address:	New Ash Green Youth Centre, Ash Road, New Ash Green, Longfield, Kent DA3 8JY
Correspondence Address:	100 Punch Croft, New Ash Green, Kent. DA3 8HS

1.1 Trustees

Louise Banks	Chair
Michael Gordon Banks	Group Lead Volunteer
Clare Hambleton	Secretary
Casey Hughes	Treasurer
Mark Jennings	Quartermaster
Mollie Louise Burr	Trustee
Donald Peter Lewis	Trustee
Gillian Lewis	Trustee
Alice Baker	Trustee

2 Structure, Governance and Management

2.1 Governing Document

The Group's governing documents are those of The Scout Association. They consist of a Royal Charter, which in turn gives authority to the Bye Laws of the Association and the Policy, Organisation and Rules (P.O.R) of the Scout Association.

2.2 Constitution

Ash Green Scout Group is a trust established under the Policy, Organisation and Rules of the Scout Association (*P.O.R.*). It has a constitution agreed by the Group Scout Council, but which is subservient to its governing documents.

2.3 Group Scout Council

The Group Scout Council is the electoral body to which the Group Trustee Board is accountable. It has a governance role for the charity and makes Group Trustee Board appointments other than ex officio and co-opted appointments (see P.O.R. Rule 5.4.5.2.c).

- Membership of the Group Scout Council does not provide any membership status of the Scouts.
- The Group Scout Council has no Trustee responsibilities.

2.4 Group Trustee Board

The Group Trustee Board is a team of volunteers who work together, as Charity Trustees, to make sure the Group is run safely and legally. At the heart of their role is a focus on strategy, performance and assurance. Although the Group Trustee Board is responsible for the charity, it is accountable to the Group Scout Council.

The Group Trustee Board exists to support the Group Lead Volunteer in meeting the responsibilities of their appointment.

The Group Trustee Board must act in the charity's best interests, acting with reasonable care and skill and take steps to be confident that:

- a) The charity is:
 - well managed
 - carrying out its purposes for the public benefit
 - complying with the charity's governing document and the law
 - managing the charity's resources responsibly
- b) the charity is operating compliant with P.O.R and the charity regulator, including effective management of each of the Key Policies listed in Chapter 2 of The Scout Association Policy, Organisation and Rules (*P.O.R.*).
- c) young people are meaningfully involved in decision making at all levels.
- d) the Group has sufficient resources (funds, people, property and equipment) available to meet the planned work of the Group including delivery of the high-quality programme and resource requirements of the training programme (*Rule 4.2.2 of The Scout Association Policy, Organisation and Rules*).

2.5 Trustee Selection

The trustees are appointed in accordance with the Policy, Organisation and Rules of the Scout Association (*Rule 5.4.7 of The Scout Association Policy, Organisation and Rules*).

2.6 Risk and Internal Control

The Group Trustee Board has identified the major risks to which they believe the Group is exposed. These are:

2.6.1 Injury to Volunteer Leaders, Helpers, Supporters or Members

The Group supports compliance with the Safety Policy and ensures appropriate risk assessment; elimination, reduction and control measures are taken to reduce the likelihood of any injuries.

In addition, through membership fees, the Group contributes to the Scout Association's national accident insurance policy.

2.6.2 Damage to Buildings, Property or Equipment

The Group would request the use of property and equipment from other local Scout Groups and organisations. The Group has sufficient buildings and contents insurance in place to mitigate against permanent loss.

2.6.3 Reduced Income from Subscriptions and Fund Raising

The Group is primarily reliant upon income from subscriptions and fund-raising. The Group holds adequate reserves to ensure the continuity of activities should there be a major reduction in income. The committee could also raise the value of subscriptions to increase the Group income, either temporarily or permanently.

2.6.4 Reduction or Loss of Volunteer Leaders

The Group is totally reliant upon volunteers to run and administer the activities of the Group. If there were a reduction in the number of volunteers to an unacceptable level, then there would have to be a contraction, consolidation or closure of activities or sections.

2.6.5 Reduction or Loss of Members

If there were a reduction in membership of a particular section or the Group as a whole, then there would have to be a contraction, consolidation, or closure of a section.

3 Objectives and Activities

The primary objective of the Group is that of the Scout Association generally, namely:

'to actively engage and support young people in their personal development, empowering them to make a positive contribution to society.'

The Values of Scouting

As Scouts we are guided by these values:

- Integrity - We act with integrity; we are honest, trustworthy and loyal.
- Respect - We have self-respect and respect for others.
- Care - We support others and take care of the world in which we live.
- Belief - We explore our faiths, beliefs and attitudes.
- Co-operation - We make a positive difference; we cooperate with others and make friends.

The Scout Method

Scouting takes place when young people, in partnership with adults, work together based on the values of Scouting and:

- enjoy what they are doing and have fun.
- take part in activities indoors and outdoors.
- learn by doing.
- share in spiritual reflection.
- take responsibility and make choices.
- undertake new and challenging activities.
- make and live by their Promise.

The activities of the Group are:

- The provision of the Scouting programme for 6 to 14 year old members.

4 Achievements and Performance

Please see the Trustees' Annual Review document below.

4.1 Public benefit statement

The Group meets the Charity Commission's public benefit criteria under both the advancement of education and the advancement of citizenship or community development headings.

5 Financial Review

5.1 Reserves Policy

The Group's policy on reserves is to hold sufficient resources to continue the charitable activities of the group should income and fundraising activities fall short. The Group Trustee Board considers that the group should hold a sum equivalent to 12 months' running costs, circa **£23,000**.

The Group held reserves of approximately **£28,650** against this at year end.

5.2 Investment Policy

The Group Trustee Board considers that the Group does not have sufficient funds to invest in longer-term investments such as stocks and shares. The Group has therefore adopted a low-risk strategy to the investment of its funds. All funds are held in cash using only mainstream banks or building societies. Currently, our sole Bankers are Lloyds Bank, Gravesend, Kent.

6 Declaration

The trustees declare that they have approved this **Trustees Report**.

Signed on behalf of the charity's trustees:

Signature:

Full Name: **Michael Gordon Banks**

Position: Group Lead Volunteer

Date of Signature: 08/07/2025



Signature:

Full Name: **Louise Banks**

Position: Group Chair

Date of Signature: 08/07/2025



Statement of Assets & Liabilities for the Year Ending 31st March 2025

	Out £	In £	C/fwd. to 25/26
Balance of Gen A/c at 1/4/2024		£ 9,751.01	
Gen A/c Expenditure	£ 32,656.37		
Gen A/c Income		£ 31,934.66	
Internal Transfers	£ -	£ 994.90	
Gen A/c Carried Forward to 2025/26			£10,024.20

Balance of F/R A/c at 1/4/2024		£ 102.23	
F/R A/c Expenditure	£ -		
F/R A/c Income		£ 72.51	
Internal Transfers	£ 274.74	£ -	
Fund Raising A/c Carried Forward to 2025/26			£ 300.00

Balance of Savings A/c at 1/4/2024		£ 7,515.78	
Savings A/c Deposits		£ -	
Savings A/c Gross Interest received		£ 195.39	
Internal Transfers	£ -	£ -	£17,711.17

Cash A/c Balance at 31 Mar 2024		£ 645.30	
Cash Expenditure	£ 629.66		
Cash Income		£ 1,315.64	
Cash Internal Transfers	£ 720.16	£ -	
Cash Held at 31/3/25			£611.12

Totals	£ 34,280.93	£ 2,927.42	£28,646.49

Freehold Property (Garage) Insurance Valuation			£19,126.00
Equipment at est. insurance value- Garage			£23,540.00
Equipment at est. insurance value- Ash			£7,650.00
Equipment at est. insurance value- YC			£11,700.00
Vehicle LD----X at 2023 Purchase cost less 20%			£15,600.00

			£106,262.49

Income & Expenditure
Summary (All Accounts)

	2024-2025	2023-2024
Member Subscriptions	19,500	£ 19,035
Excelsior Explorer fees	155	£ 230
Uniform & Scarves	0	£ 8
Camp receipts	4,319	£ 4,332
KIJ Camp receipts	5,101	£ -
Fund Raising/Donations	696	£ 1,616
Activities and Group Outings	1,736	£ 979
Charitable Income/Gift Aid etc.	1,686	£ 2,145
Internal A/c Transfers	995	£ 8,751
Motor Income	100	£ 563
Other Income	430	£ 192
Interest (gross) received	195	£ 230
Section Budget Underspend	0	£ -
	£ 34,913	£ 29,329
 EXPENDITURE		
Membership fees	£ 7,315	£ 6,350
Premises Hire	£ 3,349	£ 3,245
Premises Expenditure	£ 103	£ 69
Group Equipment	£ 808	£ 1,382
Group Outings	£ -	£ -
Uniformed Section Budgets	£ 4,769	£ 3,001
Uniformed Section Activities	£ 1,341	£ 1,627
Camps	£ 5,913	£ 3,481
KIJ	£ 3,950	£ -
Training & Courses	£ 560	£ 90
Uniforms & Badges	£ 1,651	£ 1,461
First Aid	£ 943	£ 1,150
Catering	£ 21	£ 11
Stationery	£ 51	£ 70
Website services	£ 173	£ 113
AGM/Promotional costs	£ 167	£ 302
Miscellaneous expenses	£ 33	£ 29
Motor Expenses	£ 1,484	£ 21,267
Premises & Equipment Insurance	£ 520	£ 496
Fund Raising	£ 30	£ 314
Internal Transfers	£ 995	
Subs refunds	£ 105	£ 45
	£ 34,281	£ 44,501
Less Total Expenditure	£ 34,281	£ 44,501
Surplus/deficit for year	£ 632	£ -15,171

Key financial highlights are:

- There has been a substantial increase in the amount of camp fees which have been paid into our Bank Accounts, due to the impending Kent International Jamboree in 2025.
- Section Budgets were given a further boost to enable increased Section spending.
- There has been a significant increase in the Section spending on activities, which is good to see.
- We have a very good level of equipment, so we spent very little on new equipment in the year.
- Membership fees to the Scout Association increased significantly, although there was no substantial increase in Group membership numbers.
- The very significant fall in motor expenses is a result of having purchased a replacement vehicle last year – a cost which has not been repeated in the current financial period.
- A marginal overall surplus of £632 has occurred in the current financial year.

Ash Green Scout Group
Independent Scrutineer's Report for the year ending 31 March 2025

LT700005 – Scrutineer's Report to the Trustees (July 2018)

**Scrutineer's Report to the Trustees of
Ash Green Scout Group**

I report on the accounts of the Group for the year ended 31 March 2025.

Respective responsibilities of Trustees and Scrutineer

As the Group's trustees you are responsible for the preparation of the accounts; you consider that neither the audit nor independent examination requirements of the Charities Act 2011 apply. It is my responsibility without carrying out an audit or independent examination to scrutinise the accounts and to report to you.

Basis of Scrutineer's Statement

In accordance with the directions given in the Group's constitution, I have scrutinised the records and the accounts set out on the summary pages 1 and 2.

Scrutineer's Statement

In my opinion the accounts are in accordance with the records produced to me and comply with the constitution.

Name: Eileen Searle

Address: 173, Knights Croft.
New Ash Green

DA3 8HZ

Date: 2.4.25 E.S.

Trustees' Annual Report – Ash Green Scout Group

Group Structure

The group has fully adopted the new scouting framework introduced in 2024. With the formation of a new Trustee Board, new role titles and team structures also came into force, in line with the changes to our Constitution which also took place last year.

The biggest change this year has been the stepping down of Peter and Gill Lewis (Group Scout Leader and Treasurer) after nearly 10 years at the helm. Peter has worked tirelessly in that time, ensuring the group is in a strong position. We remain the largest group in Swanley District and the fourth largest in Kent. Casey Hughes joined us to take over the role as Treasurer and she has been working with Gill (out-going Treasurer) over the past couple of months learning the ropes. The Board would like to offer Casey a very warm welcome into the Group.

Charity Commission Reporting

We filed our Charities Commission Report and Accounts for the last (2023-2024) year on time.

Governance

Our Trustee Board has increased to nine members, all of whom work tirelessly in the background handling the finances, administration and governance of the Group. The Trustee Board also ensures that the Group remains compliant in all respects.

Safeguarding and Safety

There have been no reported incidents throughout the year. All of our volunteer adults have maintained up to date Safety and Safeguarding training, and they all have current enhanced DBS checks in place.

Group Membership & the Leadership Team

The Group has remained strong, with currently 128 young people across the youth sections and a further 16 young people in our affiliated Explorer unit. Our strength in numbers is purely down to our amazing leader team, running fun, exciting meetings, camps and activities. We currently have 20 uniformed volunteers and 2 Young Leaders working together at our different sections.

We have welcomed a new member to our Beaver Leaders team - Rhiannon Harrod-Reid. We also have a Duke of Edinburgh volunteer, from a local school, helping out in our Cub Sections. The Trustee Board and the Leadership Team are continually looking to recruit more adult volunteers, so that we can provide the best Scouting experiences for our young people.

Financials

The group finances remain in good order, with Gill, our former Treasurer, having done an amazing job as always. The Group's main source of income is from monthly subscriptions, topped up by Gift Aid. The Trustees have agreed to keep subscription levels unchanged this year to help the families in our community, but if our expenses continue to rise, we may have to re-visit that decision.

Monthly subscriptions for our youth members have remained at the current level since September 2017. Our biggest single expense is the annual membership of the Scout Association. That has risen by £9 per young person this year, bringing our annual membership costs to £7,315!

Waiting List

The waiting list of young people currently stands at 29. Most of the children on that list are waiting to get into Beavers - with the youngest being only 4 months old! Local demand for places at Ash Green Scout Group is consistently very high.

Section Activities

All sections have had busy meeting programmes this year with a wide variety of activities including visits to our local Police and Fire Services, and a local pottery workshop. We had a visit from a local owl sanctuary and also from the RNLI. Those visits were in addition to all the 'normal' activities expected of a Scout Group.

Youth Achievement

Individual youth achievement is recognised by their progression through the Chief Scout Awards system. We have awarded 8 Bronze, 7 Silver and 8 Gold during the year. One of our Explorers was awarded the Chief Scout Platinum Award - only the second time the award has been made in Swanley Scout District history.

Group Activities and Community support

This year has remained busy, and almost all sections have either been on camp or at sleepovers. This year, our Scout sections are attending the Kent International Jamboree in August – an international event which happens every four years and has an overall attendance of around 8,500 Scouts and Guides. This week-long camp is packed full of activities and entertainment and is a ‘once in a lifetime’ opportunity for our Scouts.

The Group took part in the St Georges Fun Day arranged by Swanley Scouts District again this year, with a short parade and lots of activities for the young people during the day. We provided, and ran, an Archery range and Zorb football matches at the Fun Day.

We again supported the Royal British Legion by selling Remembrance poppies etc. from a stall in our village, and a large contingent of the Group took part in the annual Remembrance Parade at Ash Church. We also supported Ash Church and our Parish Council with the VE Day Beacon lighting by providing and running the BBQ.

All proceeds from the BBQ went to the Ellenor hospice, in memory of the Group Lead Volunteer’s Mother, who was a big supporter of the Group but sadly she passed away quite suddenly.

We continue to support our Village Day and other local fetes etc. and we derive some welcome additional funds from those activities. Fund-raising aside, Group sections have continued our support of our community with various litter picks around the local neighbourhoods. We also attended a couple of ‘working days’ of the Village Woodlands Group, where we helped to clear out and cut back the village orchard. The Group’s Scout sections are looking to get more involved in future helping the Woodlands Group.

ASH GREEN SCOUT GROUP

England & Wales - Charity number 1199314

Accounts

Ash Green Scout Group Trustees' Annual Report

*For the Financial Year ending 31st March 2024
and covering the period 01/04/2023 to 31/03/2024*

1 Reference and Administration Details

Charity Name:	Ash Green Scout Group
Charity Number:	1199314
Principal Address:	New Ash Green Youth Centre, Ash Road, New Ash Green, Longfield, Kent DA3 8JY
Correspondence Address:	133 Knights Croft, New Ash Green, Kent. DA3 8HY

1.1 Trustees

Louise Banks	Chair (Period 6/2024-6/2027)
Donald Peter Lewis	Group Lead Volunteer (Ex Officio)
Clare Hambleton	Secretary (Period 6/2024-6/2027)
Gillian Lewis	Treasurer (Period 6/2024-6/2026)
Michael Gordon Banks	Trustee (Period 6/2024-6/2027)
Mark Jennings	Quartermaster (Period 6/2024-6/2027)
Mollie Louise Burr	Trustee (Period 6/2024-6/2027)

2 Structure, Governance and Management

2.1 Governing Document

The Group's governing documents are those of The Scout Association. They consist of a Royal Charter, which in turn gives authority to the Bye Laws of the Association and the Policy, Organisation and Rules (P.O.R) of the Scout Association.

2.2 Constitution

Ash Green Scout Group is a trust established under the Policy, Organisation and Rules of the Scout Association (*P.O.R.*). It has a constitution agreed by the Group Scout Council, but which is subservient to its governing documents.

2.3 Group Scout Council

The Group Scout Council is the electoral body to which the Group Trustee Board is accountable. It has a governance role for the charity and makes Group Trustee Board appointments other than ex officio and co-opted appointments (see P.O.R. Rule 5.4.5.2.c).

- Membership of the Group Scout Council does not provide any membership status of the Scouts.
- The Group Scout Council has no Trustee responsibilities.

2.4 Group Trustee Board

The Group Trustee Board is a team of volunteers who work together, as charity Trustees, to make sure the Group is run safely and legally. At the heart of their role is a focus on strategy, performance and assurance. Although the Group Trustee Board is responsible for the charity, it is accountable to the Group Scout Council.

The Group Trustee Board exists to support the Group Lead Volunteer in meeting the responsibilities of their appointment.

The Group Trustee Board must act in the charity's best interests, acting with reasonable care and skill and take steps to be confident that:

- a) The charity is:
 - well managed
 - carrying out its purposes for the public benefit
 - complying with the charity's governing document and the law
 - managing the charity's resources responsibly
- b) the charity is operating compliant with P.O.R and the charity regulator, including effective management of each of the Key Policies listed in Chapter 2 of The Scout Association Policy, Organisation and Rules (*P.O.R.*).
- c) young people are meaningfully involved in decision making at all levels.
- d) the Group has sufficient resources (funds, people, property and equipment) available to meet the planned work of the Group including delivery of the high-quality programme and resource requirements of the training programme (*Rule 4.2.2 of The Scout Association Policy, Organisation and Rules*).

2.5 Trustee Selection

The trustees are appointed in accordance with the Policy, Organisation and Rules of the Scout Association (*Rule 5.4.7 of The Scout Association Policy, Organisation and Rules*).

2.6 Risk and Internal Control

The Group Trustee Board has identified the major risks to which they believe the Group is exposed. These are:

2.6.1 Injury to Volunteer Leaders, Helpers, Supporters or Members

The Group supports compliance with the Safety Policy and ensures appropriate risk assessment; elimination, reduction and control measures are taken to reduce the likelihood of any injuries.

In addition, through membership fees, the Group contributes to the Scout Association's national accident insurance policy.

2.6.2 Damage to Buildings, Property or Equipment

The Group would request the use of property and equipment from other local Scout Groups and organisations. The Group has sufficient buildings and contents insurance in place to mitigate against permanent loss.

2.6.3 Reduced Income from Subscriptions and Fund Raising

The Group is primarily reliant upon income from subscriptions and fund-raising. The Group holds adequate reserves to ensure the continuity of activities should there be a major reduction in income. The committee could also raise the value of subscriptions to increase the Group income, either temporarily or permanently.

2.6.4 Reduction or Loss of Volunteer Leaders

The Group is totally reliant upon volunteers to run and administer the activities of the Group. If there were a reduction in the number of volunteers to an unacceptable level, then there would have to be a contraction, consolidation or closure of activities or sections.

2.6.5 Reduction or Loss of Members

If there were a reduction in membership of a particular section or the Group as a whole, then there would have to be a contraction, consolidation, or closure of a section.

3 Objectives and Activities

The primary objective of the Group is that of the Scout Association generally, namely:

'to actively engage and support young people in their personal development, empowering them to make a positive contribution to society.'

The Values of Scouting

As Scouts we are guided by these values:

- Integrity - We act with integrity; we are honest, trustworthy and loyal.
- Respect - We have self-respect and respect for others.
- Care - We support others and take care of the world in which we live.
- Belief - We explore our faiths, beliefs and attitudes.
- Co-operation - We make a positive difference; we cooperate with others and make friends.

The Scout Method

Scouting takes place when young people, in partnership with adults, work together based on the values of Scouting and:

- enjoy what they are doing and have fun.
- take part in activities indoors and outdoors.
- learn by doing.
- share in spiritual reflection.
- take responsibility and make choices.
- undertake new and challenging activities.
- make and live by their Promise.

The activities of the Group are:

- The provision of the Scouting programme for 6 to 14 year old members.

4 Achievements and Performance

Please see the Trustees' Annual Review document below.

4.1 Public benefit statement

The Group meets the Charity Commission's public benefit criteria under both the advancement of education and the advancement of citizenship or community development headings.

5 Financial Review

5.1 Reserves Policy

The Group's policy on reserves is to hold sufficient resources to continue the charitable activities of the group should income and fundraising activities fall short. The Group Trustee Board considers that the group should hold a sum equivalent to 12 months' running costs, circa **£23,000**.

The Group held reserves of approximately **£28,000** against this at year end.

5.2 Investment Policy

The Group Trustee Board considers that the Group does not have sufficient funds to invest in longer-term investments such as stocks and shares. The Group has therefore adopted a low-risk strategy to the investment of its funds. All funds are held in cash using only mainstream banks or building societies. Currently, our sole Bankers are LloydsTSB, Gravesend, Kent.

6 Declaration

The trustees declare that they have approved this **Trustees Report**.

Signed on behalf of the charity's trustees:

Signature:



Full Name: **Donald Peter Lewis**

Position: Group Lead Volunteer

Date of Signature: 14 June 2024

Signature:



Full Name: **Louise Banks**

Position: Group Chair

Date of Signature: 14 June 2024

Ash Green Scouts Accounts for the Year Ending 31 March 2024

Statement of Assets & Liabilities for the Year Ending 31st March 2024

	Out £	In £	C/fwd to 24/25
Balance of Gen A/c at 1/4/2023		£ 6,939.54	
Gen A/c Expenditure	£ 43,226.39		
Gen A/c Income		£ 27,831.98	
Internal Transfers	£ 1,200.00	£ 19,405.88	
Gen A/c C'Fwd to 2024/25			£9,751.01
Balance of F/R A/c at 1/4/2023		£ 205.88	
F/R A/c Expenditure	£ -		
F/R A/c Income		£ 102.23	
Internal Transfers	£ 205.88	£ -	
Fund Raising A/c C'Fwd to 2024/25			£ 102.23
Balance of Savings A/c at 1/4/2023		£ 35,685.46	
Savings A/c Deposits		£ -	
Savings A/c Gross Interest received		£ 230.32	
Internal Transfers	£ 19,000.00	£ 600.00	£17,515.78
Treasurer A/c Balance at 31 Mar 2023		£ 354.89	
Treasurer Expenditure	£ 1,274.55		
Treasurer Income		£ 1,164.96	
Treasurer Internal Transfers	£ 200.00	£ 600.00	
Treasurer Cash Held at 31/3/24			£645.30
Totals	£ 65,106.82	£ 93,121.14	£28,014.32
Freehold Property (Garage) Insurance Valuation		£19,126.00	£13,000.00
Equipment at est. insurance value- Garage		£23,540.00	£18,832.00
Equipment at est. insurance value- Ash		£7,650.00	£6,120.00
Equipment at est. insurance value- YC		£11,700.00	£9,360.00
Vehicle LD69ZDX at Purchase cost 2023		£19,500.00	£14,625.00
		£109,530.32	£89,951.32

**Depreciated values: Property is kept at an arbitrary 'realistic selling price', equipment and other 'wasting assets' values have been reduced by 20% and our van has been reduced in value by 25%. After depreciation the total value of Group assets is estimated at £89,951.32.*

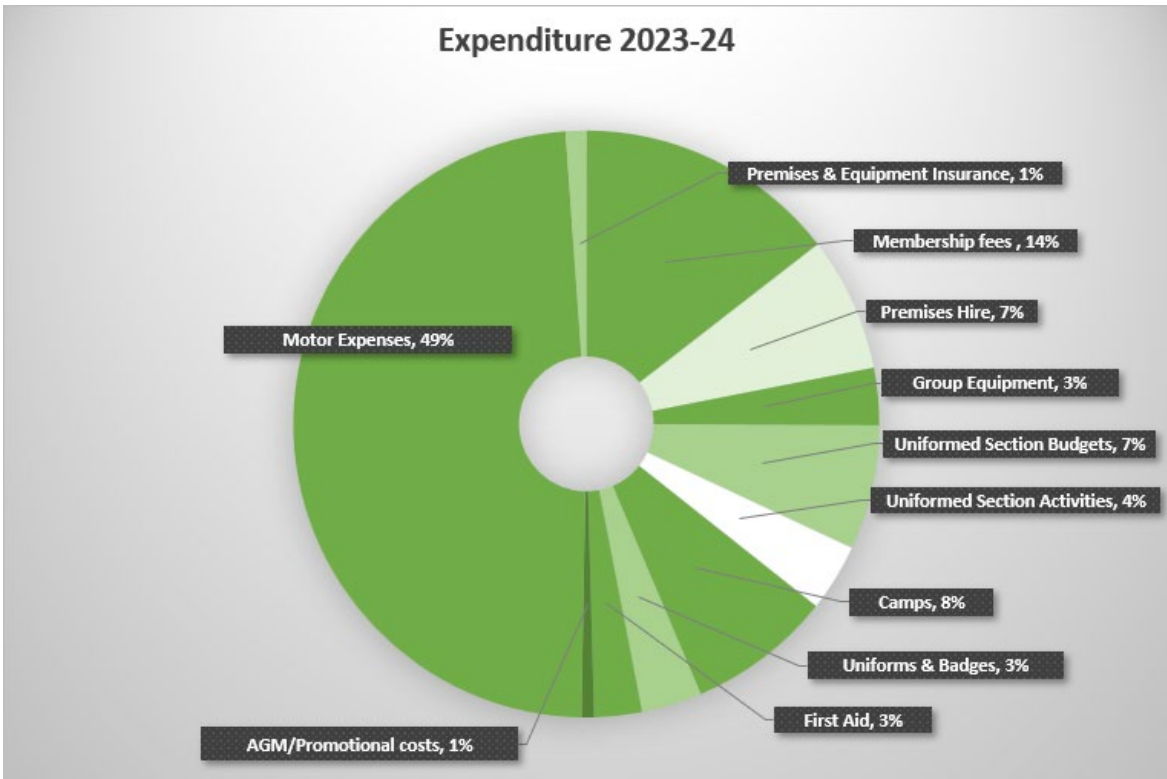
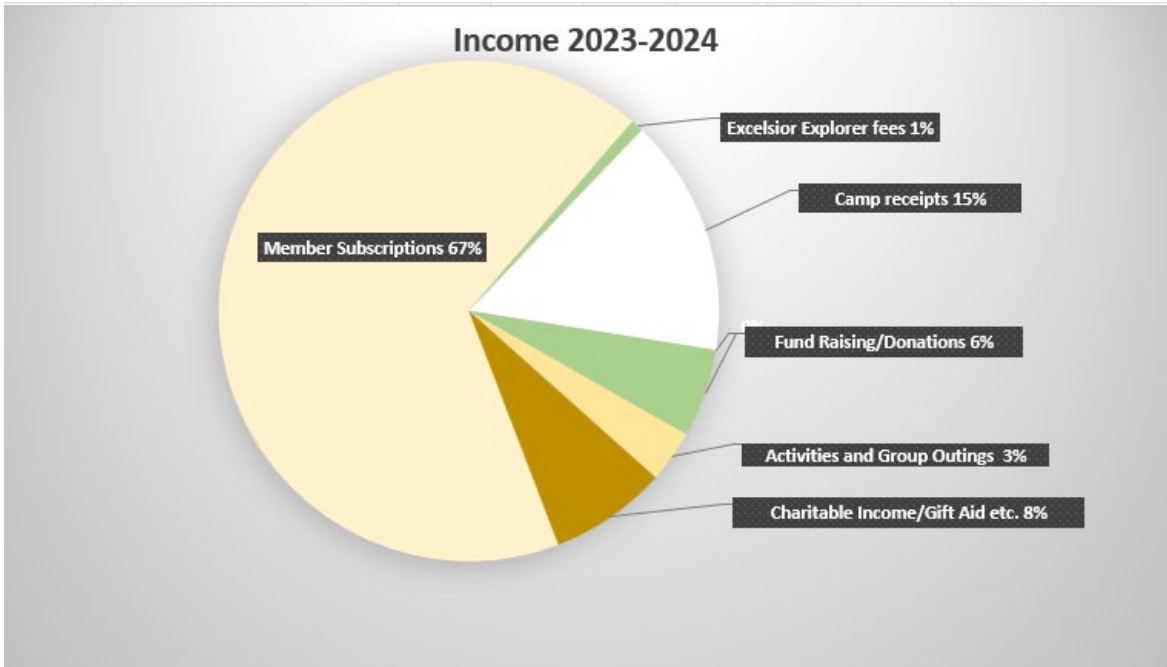
We carry forward total **cash assets** of **£28,014** into 2024/25.

Key financial highlights are:

- There has been a big increase in the amount of camp receipts which have been paid into our Bank Account, rather than being given to the Leader in Charge. This means we have better overall control of these finances.
- Section Budgets were given a further boost to enable increased Section spending.
- There has been a significant increase in the Section spending on activities, which is good to see.
- We have very good equipment, hence we spent very little on new equipment in the year - some £6,000 less than the previous year.
- First Aid costs increased significantly – largely due to the purchase of training Resusci Annie's – where the Group received a grant, but we had to top that grant up.
- The purchase of *Vincent*, our van, to replace *Gordon*, was a substantial 'one off' cost for the year. *Vincent* should last us many years.

<u>Income & Expenditure</u> <u>Summary (All Accounts)</u>				
	2023-2024		2022-2023	
INCOME				
Member Subscriptions	£	19,035	£	19,052
Excelsior Explorer fees	£	230	£	215
Uniform & Scarves	£	8	£	8
Camp receipts	£	4,352	£	1,183
KIJ Camp receipts		0	£	2,020
Fund Raising/Donations	£	1,616	£	558
Activities and Group Outings	£	959	£	1,101
Charitable Income/Gift Aid etc.	£	2,145	£	2,445
Motor Income	£	563	£	-
Other Income	£	192	£	114
Interest (gross) received	£	230	£	73
Section Budget Underspend	£	-	£	-
		£ 29,329		£ 26,769
EXPENDITURE				
Membership fees	£	6,350	£	5,264
Premises Hire	£	3,245	£	3,401
Premises Expenditure	£	69	£	3,660
Group Equipment	£	1,382	£	7,909
Group Outings	£	-	£	149
Uniformed Section Budgets	£	3,001	£	2,496
Uniformed Section Activities	£	1,627	£	649
Camps	£	3,481	£	213
KIJ		0	£	2,410
Training & Courses	£	90	£	1,835
Uniforms & Badges	£	1,461	£	1,915
First Aid	£	1,150	£	640
Catering	£	11	£	-
Stationery	£	70	£	91
OSM, Web	£	113	£	50
AGM/Promotional costs	£	302	£	799
Miscellaneous expenses	£	29	£	47
Motor Expenses	£	21,267	£	1,685
Premises & Equipment Insurance	£	496	£	625
Fund Raising	£	314	£	-
Subs refunds	£	45	£	75
		£ 44,501		£ 33,913
Less Total Expenditure		£ 44,501		£ 33,913
Surplus for year		-£ 15,171		-£ 7,144

**Income & Expenditure Analysis by percentage
for the year ending 31 March 2024**



Ash Green Scout Group
Independent Scrutineer's Report for the year ending 31 March 2024

LT700006 - Independent Examiner's Report to the Trustees (February 2024)

England & Wales

Unqualified report for a non-company charity preparing receipts and payments accounts with a gross income of £250,000 or less in the relevant financial year

Independent examiner's report to the trustees of Ash Green Scout Council

I report to the trustees on my examination of the accounts of the Ash Green Scout Group for the year ended 31st March 2024

Responsibilities and basis of report

As the charity trustees of the Ash Green Scout Group you are responsible for the preparation of the accounts in accordance with the requirements of the Charities Act 2011 ('the Act').

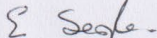
I report in respect of my examination of the Ash Green Scout Group accounts carried out under section 145 of the 2011 Act and in carrying out my examination I have followed all the applicable Directions given by the Charity Commission under section 145(5)(b) of the Act.

Independent examiner's statement

I have completed my examination. I confirm that no material matters have come to my attention in connection with the examination giving me cause to believe that in any material respect:

1. accounting records were not kept in respect of the Ash Green Scout Group as required by section 130 of the Act; or
2. the accounts do not accord with those records.

I have no concerns and have come across no other matters in connection with the examination to which attention should be drawn in this report in order to enable a proper understanding of the accounts to be reached.

Signed: 

Name: EILEEN SEARLE

Relevant professional qualification or membership of professional bodies (if any):

Address: 173 KNIGHTS CROFT
NEW ASH GREEN DA3 8HZ

Date: 24.4.24

Trustees' Annual Review – Ash Green Scout Group

Overview of Group Progress

The Group has continued to grow during the past year and, due to our fantastic Volunteer leader team, all Sections have run without any significant disruptions or difficulties. We continue to look to recruit more adult volunteer help so that we can provide the best Scouting for our young people. National changes in Scout Group structure are slowly being introduced and we hope that these will make it easier for new volunteers to become involved with Ash Green Scouts. We are looking towards parents and supporters who are willing to join our team and make Scouting even better in New Ash Green!

We continue to offer a well-balanced, youth-led programme of activities across the age 6 to age 14 range, with emphasis on individual development measured against the Chief Scout's Award programme. Beaver, Cub and Scout Sections all managed to camp on at least one occasion during the year and there have also been various outdoor activities including Climbing, Watersports and, of course, our own Archery and Tomahawk sessions. Indoor Crossbow and outdoor Zorb Football sessions have also been made available for our Scout-aged young people.

Financially, the Group is in a very stable, healthy position due to the diligence of the Trustee Board and the careful monitoring of our finances by our Treasurer. The accounts have been independently scrutinised, and the Trustee Board has approved the financial accounts. Overall, our financial reserves have fallen because we purchased a replacement van, but that expenditure had been previously planned for, and was expected. We are still in a very secure financial position with adequate reserves going forward.

Changes to Scouting

Following a long review process, Scouting is undergoing a significant change in the way it is promoted and seen publicly. The changes largely relate to the structure of the Group's Trustee Board and the Group's Scout Council with the emphasis on making Trustee roles clearer. This will result in greater transparency in the way the Group operates. At Ash Green we have already implemented some of those changes, but further changes will be necessary. The changes do not directly impact on our Uniformed Sections and/or young people.

The changes impacted on the wording of our Ash Green Scout Group Constitution, and we have updated the Constitution document. The revised Constitution was approved at the Annual General Meeting in June 2024.

Group Membership and Annual Census

- As a Group, we continue to be the largest (by membership) of all Groups in the Swanley District.
 - We (at January 2024 Census) had 115 invested young members. That was just 29 short of the absolute maximum number we could safely manage at the premises.
 - There are now 19 more young people in the Group than we reported in the previous annual Census in January 2023.
 - We also continue to have a long list of young people waiting to join us. That list stands at 51 young people, 28 of whom will be eligible to join in the 2024/25 financial year – assuming we can find spaces for them all!
 - We expect to continue to have full membership going forward in the foreseeable future.
- Our limitation on growth is largely due to the lack of available premises/times for any new Sections. That, plus the availability of new Volunteers to run any new Sections, prevents us from expanding further.
- We paid a total of £6,350 in membership costs to Scout headquarters for the year. That was an increase of £1,086 over the previous year.
- Membership costs account for 14% of our outgoings and are the equivalent of over 3 month's subs for each young person who is a member of the Group.

Youth Awards

- All Sections have made good progress in the young peoples' development programme known as the Chief Scout's Award. A number of Bronze, Silver and Gold awards have been made during the year.
- We continue to recognise individual progress in the Beaver, Cub and Scout sections and we presented some trophies for the Beaver/Cub/Scout/Explorer of the Year Award during our AGM. These awards are decided upon by the Section Leader Team and are in recognition of the progress the child has made over

the year. That progress is not solely related to badges, but also looks at participation, personal development, individual achievement and overcoming personal difficulties.

Volunteer Leadership Team

- The leadership team is currently standing at 22 Uniformed Leaders. Additionally, we have two Young Leaders, two uniformed 'occasional leaders' and one Instructor.
- There has been a major restructuring of the Beaver Sections following some leadership changes, but the new Beaver leader teams are working out very well.
- We welcome our newest leaders Holly, Adam, Simon, Alexa and Lauren to the uniformed leader teams and thank them for their support.

The Trustee Board

- The Trustee Board has been restructured to comply with the latest Scout Association Policy. Currently there are seven Trustees, but we are looking to increase that number to around nine. We will be advertising for further volunteer Trustee vacancies. Our aim is to add a community representative and a further young Trustee, to ensure we have a good age and skill mix to run the group's business efficiently.
- We will hold a Trustee selection process shortly, and Extraordinary General Meeting will be called to formally elect the new people to the Trustee Board later in the year.

Safeguarding, Safety and Compliance

- There were two minor incidents of safeguarding during the year. Neither of these actually directly related to Scouting at New Ash Green, but our leaders became aware of circumstances where it was necessary to report the matters to Scouting Headquarters. Headquarters deemed that no further action was necessary by Ash Green Scout Group, nor were we implicated in the incidents.
- There were no safety issues reported throughout the year.
- The Group maintains a 100% Compliance record and all the Leadership Team and Trustee Board are fully up to date with their required training.

Equipment

- We have spent comparatively little (£1,382) on general equipment over the year.
- We had to purchase a replacement vehicle, as *Gordon*, our 15 year old van had mechanical and electrical issues and we were advised that the van was uneconomical to repair. We found a replacement vehicle and purchased a 2019 Renault Master, which we have called *Vincent*, at a cost of £18,500. We had adequate reserves to enable us to purchase *Vincent* and the van should last us for many years.

Charity Registration

- We filed our Charities Commission Report and Accounts for the last (2022-2023) year on time.

Fund-raising and Community Involvement

The Group looks to support as many local initiatives and events as we are able. These activities benefit the local community and help us to promote the values of Scouting in our community. In particular:

- The Group Sections continued to support the Community Cupboard foodbank with donations from time to time.
- Regular Litter Picking in New Ash Green – a favourite activity, especially for the younger Sections!
- Attendance and Group Parade at Remembrance Sunday (*November*).
- *St George's Day Promise Renewal and Fun Day (April)*
 - We had a 'reasonable' number of young people turn up for this event. We supported the event by running Archery and Zorb football bases. Everyone looked as though they enjoyed themselves.

Jamboree on The Trail (JOTT)

- Although the 'official' JOTT ended last year, we arranged our own 'JOTT' as it has been enjoyed as a Family Hike. It was well attended, and everyone enjoyed the Hike.

Village Day (June)

- We ran two activities - Archery and Tomahawk throwing at our local Village Day. We will be repeating this in 2024, so come along and try your hand at these skills!

ASH GREEN SCOUT GROUP

England & Wales - Charity number 1199314

Accounts

Ash Green Scout Group

Trustees' Annual Report

For the Financial Year ending 31st March 2023 and covering the period
01/04/2022 to 31/03/2023

1 Reference and Administration Details

Charity Name: **Ash Green Scout Group**
Charity Number: **1199314**
Principal Address: **New Ash Green Youth Centre, Ash Road, New Ash Green,
Longfield, Kent DA3 8JY**
Correspondence
Address: **133 Knights Croft, New Ash Green, Kent. DA3 8HY**

1.1 Trustees

Louise Banks	Group Chair
Donald Peter Lewis	Group Lead Volunteer
Clare Hambleton	Group Secretary
Gillian Lewis	Group Treasurer
Mark Jennings	Excelsior Explorer Lead Volunteer
Michael Gordon Banks	Deputy Group Lead Volunteer

2 Structure, Governance and Management

2.1 Governing Document

The Group's governing documents are those of The Scout Association. They consist of a Royal Charter, which in turn gives authority to the Bye Laws of the Association and the Policy, Organisation and Rules (POR) of the Scout Association.

2.2 Group Scout Council

The Group Scout Council is the electoral body to which the Group Trustee Board is accountable. Membership of the Group Scout Council is open to:

- Group Uniformed Volunteers
- Group Active Support Managers and members
- Skills Instructors
- Administrators
- Advisers
- Patrol Leaders
- All Parents of youth members
- The District Lead Volunteer and District Chair are ex-officio members of the Group Scout Council.

2.3 Constitution

The Group is a trust established under the Policy, Organisation and Rules of the Scout Association.

It has a constitution agreed by the Group Scout Council, but which is subservient to its governing documents.

2.4 Trustee Selection

The trustees are appointed in accordance with the Policy, Organisation and Rules of the Scout Association.

2.5 Group Trustee Board

The Group is led by a Group Lead Volunteer and managed by the Group Trustee Board. They are accountable to the Group Scout Council for the satisfactory running of the Group.

The Trustee Board exists to support the Group Lead Volunteer in meeting the responsibilities of their appointment.

Members of the Trustee Board must act collectively as Charity Trustees of the Scout Group, and in the best interests of its members to:

- Comply with the Policy, Organisation and Rules of The Scout Association
- Protect and maintain any property and equipment owned by and/or used by the Group.
- Manage the Group finances.
- Provide insurance for people, property and equipment.
- Provide sufficient resources for Scouting to operate. This includes, but is not limited to, supporting recruitment, other adult support, and fund-raising activities.
- Promote and support the development of Scouting in the local area.
- Manage and implement the Safety Policy locally.
- Ensure that a positive image of Scouting exists in the local community.
- Appoint and manage the operation of any sub-Committees, including appointing a Chair to lead the sub-Committees.

- Ensure that Young People are meaningfully involved in decision making at all levels within the Group.
- The opening, closure and amalgamation of sections as necessary.
- And all other duties as set out in Policy, Organisation and Rules.

2.6 Risk and Internal Control

The Group Trustee Board has identified the major risks to which they believe the Group is exposed which are:

2.6.1 Injury to Volunteer Leaders, Helpers, Supporters or Members

The Group supports compliance with the Safety Policy and ensures appropriate risk assessment; elimination, reduction and control measures are taken to reduce the likelihood of any injuries.

In addition, through membership fees, the Group contributes to the Scout Association's national accident insurance policy.

2.6.2 Damage to Buildings, Property or Equipment

The Group would request the use of property and equipment from other local Scout Groups and organisations. The Group has sufficient buildings and contents insurance in place to mitigate against permanent loss.

2.6.3 Reduced Income from Subscriptions and Fund Raising

The Group is primarily reliant upon income from subscriptions and fund-raising. The Group holds adequate reserves to ensure the continuity of activities should there be a major reduction in income. The committee could also raise the value of subscriptions to increase the Group income either temporarily or permanently.

2.6.4 Reduction or Loss of Volunteer Leaders

The Group is totally reliant upon volunteers to run and administer the activities of the Group. If there were a reduction in the number of volunteers to an unacceptable level, then there would have to be a contraction, consolidation or closure of activities or sections.

2.6.5 Reduction or Loss of Members

If there were a reduction in membership of a particular section or the Group as a whole, then there would have to be a contraction, consolidation, or closure of a section.

3 Objectives and Activities

The primary objective of the Group is that of the Scout Association generally, namely:

'to actively engage and support young people in their personal development, empowering them to make a positive contribution to society.'

The Values of Scouting

As Scouts we are guided by these values:

- Integrity - We act with integrity; we are honest, trustworthy and loyal.
- Respect - We have self-respect and respect for others.
- Care - We support others and take care of the world in which we live.
- Belief - We explore our faiths, beliefs and attitudes.
- Co-operation - We make a positive difference; we cooperate with others and make friends.

The Scout Method

Scouting takes place when young people, in partnership with adults, work together based on the values of Scouting and:

- enjoy what they are doing and have fun.
- take part in activities indoors and outdoors.
- learn by doing.
- share in spiritual reflection.
- take responsibility and make choices.
- undertake new and challenging activities.
- make and live by their Promise.

The activities of the Group are:

- The provision of the Scouting programme for 6 to 14 year old members.

4 Achievements and Performance

Please see the Annual Review document below.

4.1 Public benefit statement

The Group meets the Charity Commission's public benefit criteria under both the advancement of education and the advancement of citizenship or community development headings.

5 Financial Review

5.1 Reserves Policy

The Group's policy on reserves is to hold sufficient resources to continue the charitable activities of the group should income and fundraising activities fall short. The Group Trustee Board considers that the group should hold a sum equivalent to 12 months' running costs, circa **£20,000**.

The Group held reserves of approximately **£43,000** against this at year end.

This is above the level required for operating expenses alone. However, this can be explained by the desire to replace the ageing Group Van in the very near future.

5.2 Investment Policy

The Group Trustees Board considers that the Group does not have sufficient funds to invest in longer-term investments such as stocks and shares. The Group has therefore adopted a low-risk strategy to the investment of its funds. All funds are held in cash using only mainstream banks or building societies. Currently, our sole Bankers are LloydsTSB, Gravesend, Kent.

6 Declaration

The trustees declare that they have approved the trustees report above. Signed on behalf of the charity's trustees:

Signature:



Full Name: **Peter Lewis**

Position: Group Lead Volunteer

Date of Signature: 05/11/2023

Signature:



Full Name: **Louise Banks**

Position: Group Chair

Date of Signature: 05/11/2023

Statement of Assets & Liabilities for the Year Ending 31st March 2023

	Out £	In £	C/fwd to 23/24
Balance of Gen A/c at 1/4/2022		9,906.03	
Gen A/c Expenditure	40,453.49*		
Gen A/c Income		37,487.00*	
Gen A/c C'Fwd to 2023/24			£6,939.54
Balance of Treasurer A/c at 1/4/2022		733.92	
Treasurer's A/c Income		580.85	
Treasurer's A/c Expenditure	959.88		
Treasurers' Cash C'fwd to 2023/24			£354.89
Balance of F/R A/c at 1/4/2022		1,397.83	
F/R A/c Expenditure	1,620.00		
F/R A/c Income		428.05	£205.88
Balance of Savings A/c at 1/4/2022		38,412.60	
Savings A/c Deposits		7,200.00	
Savings A/c Gross Interest received		72.86	
Savings A/c Withdrawals	10,000.00		£35,685.46
Totals	£53,033.37	£ 96,219.14	£43,185.77
Freehold Property (Garage)			£11,500.00
Equipment at estimated insurance value			£35,000.00
Vehicle GF08			£ 500.00
			£90,185.77

* Within these amounts are Internal Account Transfers (monies moved between accounts) amounting to a total of £19,120. These transfers artificially inflate the figures shown.

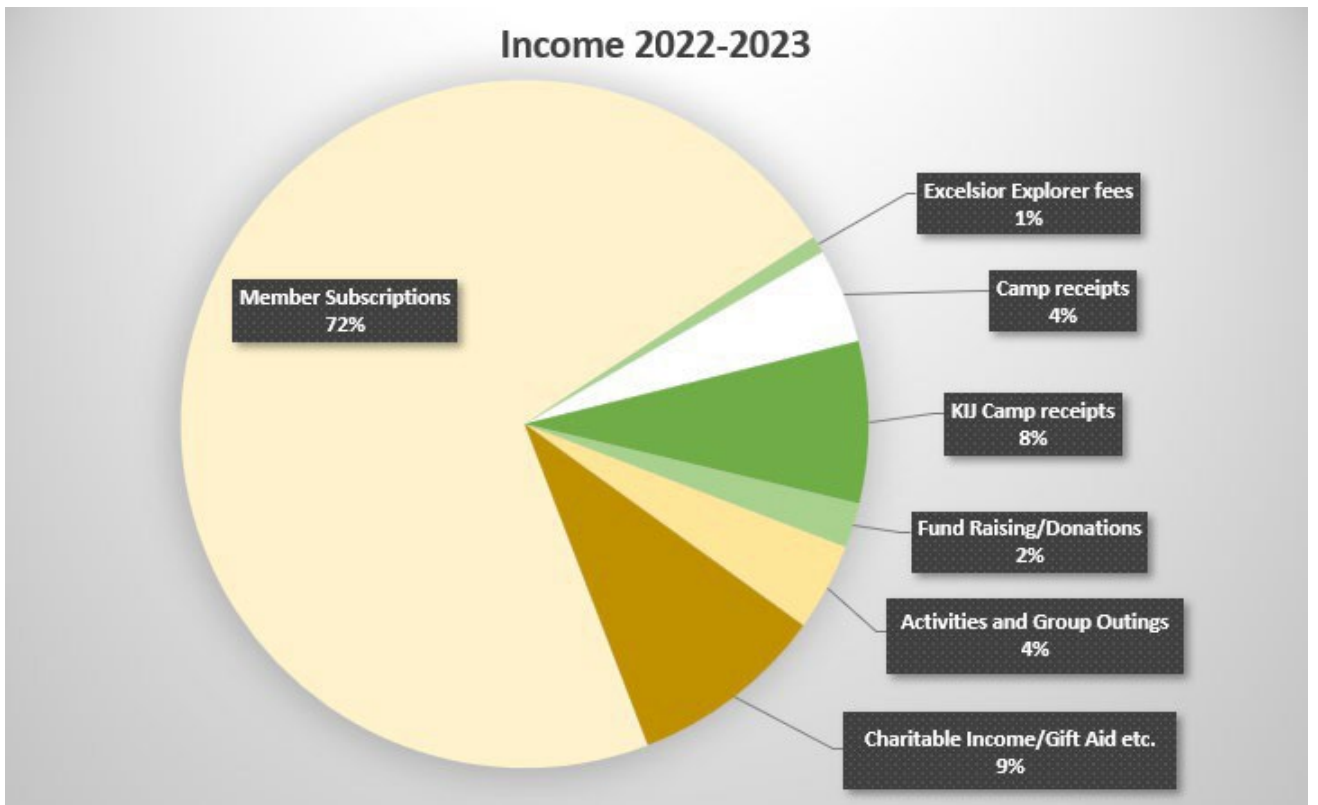
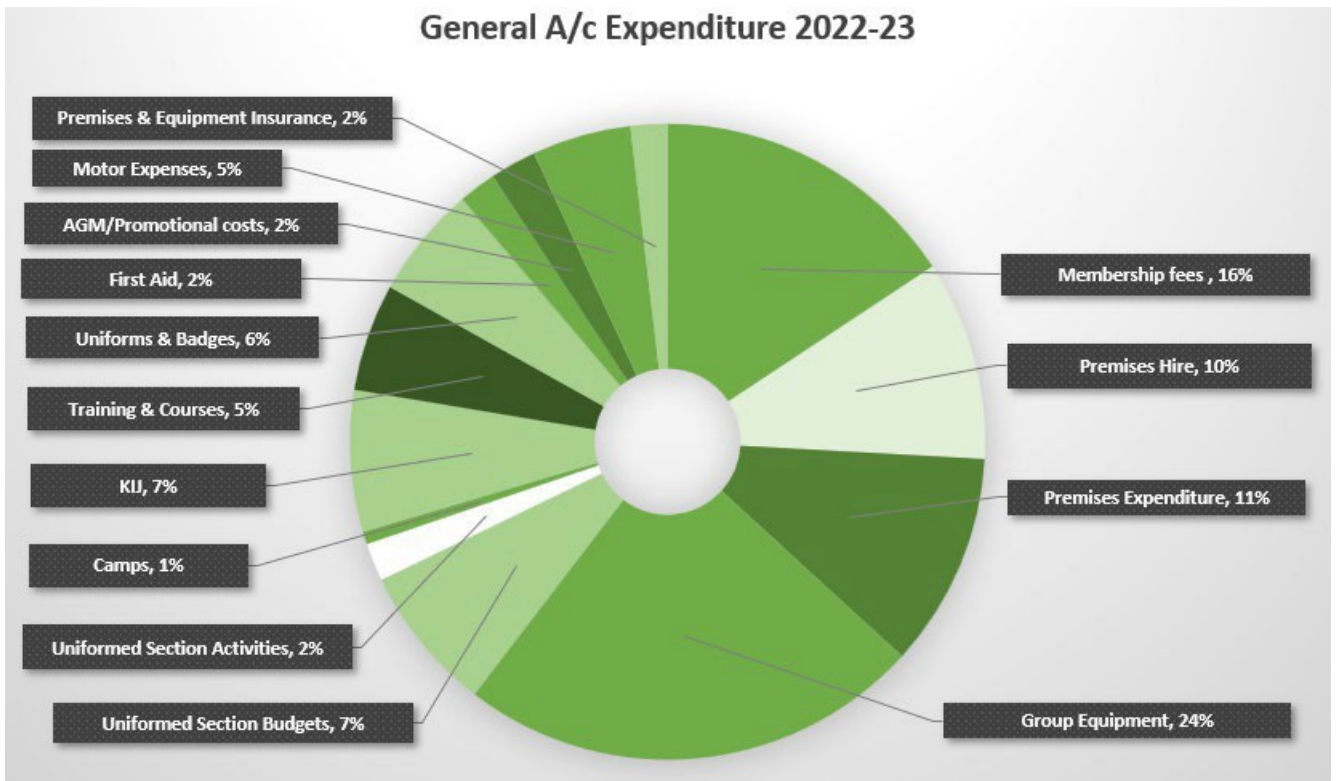
INCOME (All sources)

	2022-2023	2021-2022
Member Subscriptions	£ 19,052	£ 17,728
Excelsior Explorer fees	£ 215	£ 95
Uniform & Scarves	£ 8	£ 36
Camp receipts	£ 1,183	£ 81
KIJ Camp receipts	£ 2,020	£ 1,990
Fund Raising/Donations	£ 558	£ -
Activities and Group Outings	£ 1,101	£ 584
Charitable Income/Gift Aid etc.	£ 2,445	£ 2,913
Internal A/c Transfers	£ 19,000	£ 8,751
Other Income	£ 114	£ -
Interest (gross) received	£ <u>73</u>	<u> </u>
	£ 45,768	£ 32,178

EXPENDITURE (All sources)

	2022-2023	2021-2022
Membership fees	£ 5,264	£ 5,671
Premises Hire	£ 3,401	£ 2,405
Premises Expenditure	£ 3,660	£ 12,350
Group Equipment	£ 7,909	£ 1,809
Group Outings	£ 149	£ 200
Uniformed Section Budgets	£ 2,496	£ 395
Uniformed Section Activities	£ 649	£ 1,060
Camps	£ 213	£ 2,882
Kent International Jamboree	£ 2,410	£ -
Training & Courses	£ 1,835	£ 454
Uniforms & Badges	£ 1,915	£ 1,591
First Aid Supplies	£ 640	£ 112
Stationery	£ 91	£ 152
OSM, Web	£ 50	£ 56
AGM/Promotional costs	£ 799	£ -
Miscellaneous expenses	£ 47	£ 288
Motor Expenses	£ 1,685	£ 1,290
Premises & Equipment Insurance	£ 625	£ 540
Subs refunds	£ <u>75</u>	£ <u>58</u>
	£ 33,913	£ 31,313
Internal Accounting Transfers	£ 19,120	£ 7,200
Less Total Expenditure	<u>£ 53,033</u>	<u>£38,513</u>
Surplus for year	-£7,265	-£ 6,335

Pie chart representation of Income and Expenditure (All accounts) for the year 2022/2023



Scrutineer's Report to the Trustees of the Ash Green Scout Group

I report on the accounts of the Group for the year ended 31st March 2023

Respective responsibilities of Trustees and Scrutineer

As the Group's trustees you are responsible for the preparation of the accounts; you consider that neither the audit nor independent examination requirements of the Charities Act 2011 apply. It is my responsibility, without carrying out an audit or independent examination, to scrutinise the accounts and to report to you.

Basis of Scrutineer's Statement

In accordance with the directions given in the Group's constitution, I have scrutinised the records and the accounts summary as set out on the attached documents.

Scrutineer's Statement

In my opinion the accounts are in accordance with the records produced to me and comply with the constitution.

Signed: E. Seab

Address: 173 Knights Craft

New Ash Green

DA3 8HZ

Date: 12.4.23

Ash Green Scout Group

Annual Review 2022-2023

Another successful year for Ash Green Scouts!

Following the return to post-Covid 'normality' we have been able to go on more events and camps this year, including attending the Kent International Jamboree which was an amazing experience for all those able to go. All of our young people have had the opportunity to attend camps during the last year. We continue to run exciting, varied and challenging programmes for all of our young people across all age ranges.

Overall numbers of young people in the Group were slightly down at 94 at the annual census In January 2023 when compared with last year, but numbers have now recovered (iro. 110) once more and we have a very healthy waiting list. We are still the largest Group and most successful Scout Group in Swanley District by quite a margin, and we undoubtedly continue to benefit from being in a semi-rural community where opportunities for young people to have fun and enjoy themselves collectively are somewhat limited.

Scouting is undergoing significant changes in the next couple of years, and we are ready to embrace those changes.

Safety, Safeguarding and Adult Volunteer Training

This always remains a key priority for everyone in the Group and we can confidently report that there have been no safety or safeguarding issues over the year. Our Volunteer Leader team also remains fully compliant and up to date with their training and a number of our volunteer team members have received awards and commendations during the year.

We are also proud that we have quite a few Volunteer Leaders with specialist skills which enable us to provide activities like archery, climbing, crossbows, fencing and tomahawks for our young people.

Group Community Involvement

The Group maintained its community presence at the annual New Ash Green Village Day, successfully running fund-raising activities of Archery and Tomahawks, and a Coconut Shy. The event was a great opportunity for us to maintain our profile as a community-supportive Group and to talk to new people about the benefits of Scouting and of volunteering in the Group.

We put on special celebrations for the Coronation of King Charles III, took part in the national Scouts' Jamboree on the Trail, and also completed additional fundraising for our local foodbank – the Community Cupboard. The younger (Beaver and Cub) Sections also continued to serve our community by street barrier cleaning and litter-picking throughout the village centre. We also supported the national 'Big Help-Out' by running a drop-in café for local residents during the month of May.

We have continued to raise awareness of our Group wherever we could, and as part of that local awareness the Group paraded with full colours at Remembrance Day at Ash War Memorial and also at the annual St George's Day event at St Peter and Paul's Church in the village of Ash.

Equipment and Storage

We have maintained a decent and considered reserve budget despite having to replace the flat roof on our freehold storage facility in New Ash Green, and we also benefited from some additional storage,

kindly offered by our friends at St Peter and Paul's Church in Ash village. We equipped that additional storage with a security metal cage so that it was a safe place to store our bigger equipment items. We have spent a significant amount on improving and adding to our equipment – about £7,000 over the year. Our main expenditure has been on Football Zorbs, Crossbows, 4 Resus Annies (to teach/practice CPR) and some additional high quality stainless steel kitchen equipment for camping. We will need to replace our ageing van in the next year and will be looking to purchase a ULEZ compliant vehicle.

Finally, a big thank you to our Volunteer Leaders, and members of the Trustee Board, for all that they do to make Ash Green Scouts a great place for our young people – and a big thank you to our parents and supporters for your continued support.