



**Team Charlie**

**Trustees' Annual Report**

Period From 31<sup>st</sup> May 2022  
to 30<sup>th</sup> November 2023



**In memory of Charlie Ilsley**  
**4<sup>th</sup> March 2007 – 12<sup>th</sup> December 2020**

## Charity contact information



Team Charlie

Registered Charity Number: 1199139

18 Wincel Road

Winchcombe, Gloucestershire

GL54 5YE

07787 505963

[info@teamcharlie.org.uk](mailto:info@teamcharlie.org.uk) / [www.teamcharlie.org.uk](http://www.teamcharlie.org.uk)

Facebook: @charlieilsleyuk

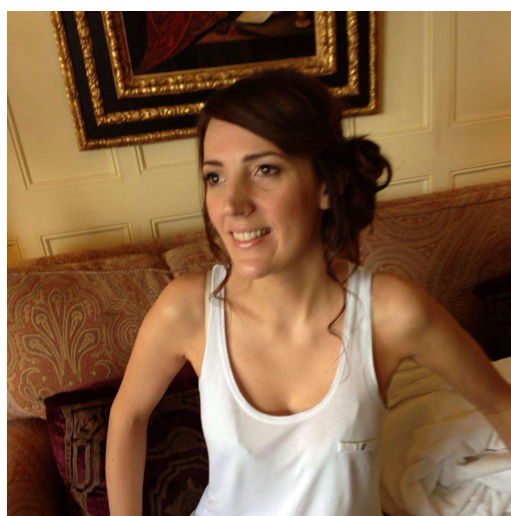
## Charity Trustees



**Toni Ilsley**



**Claire Brown**



**Karen Williams**



## Objectives and activities

Set up in memory of 13-year-old Charlie Ilsley, the charity's objectives are to relieve the needs of families and carers of children who have been diagnosed with brain, neck or spine tumours living in the UK through the provision of grants for gifts or treats, and family holiday accommodation to offer respite, create a positive experience and/or an opportunity to make memories.

### Activity

The charity has supported children affected by brain tumours across the regions of Gloucestershire, Oxfordshire and Berkshire, via the provision of grants to buy treats and gifts to boost wellbeing, aid recovery and/or offers respite. The grants have been between £400 and £1,000 to suit each child's or family's needs. These have included a treadmill, a family day out at a safari park and a family day out at Harry Potter World, covering expenses such as travel and food where appropriate. The treats/gifts have provided much needed relaxation and respite for the whole family away from hospital life and constant visits, or in the case of a specific item of equipment, an aid to physical & mental wellbeing. At the charity's fundraising events and through social media it creates as much awareness as possible related to child brain tumours and their lasting effects.

### About Charlie Ilsley

The charity was established to create a lasting legacy and as a tribute to Charlie. Born in Emmer Green near Reading, Charlie was just 8 years old when he was diagnosed with medulloblastoma in 2015, the most high-grade brain tumour found in children. Despite receiving the 'all clear' after gruelling chemotherapy and radiotherapy, in 2018 the tumour returned, before spreading to his spine. He tragically passed away in December 2020.

## Additional information

### Policy on grant making

The charity's referral forms are available on request via the website and are also distributed through the NHS and upon request from the child's consultant or another member of their paediatric team, such as their social worker. Each referral form is agreed with the consultant to confirm their current condition. Each grant is agreed by the charity's trustees before issuing.

## Structure, governance and management

### Type of governing document

Constitution of a Charitable Incorporated Organisation whose only voting members are its charity trustees.

### Trustee recruitment and appointment

The charity was co-founded by Charlie's mother Toni and friend Claire Brown, who are both trustees, with the simultaneous appointment of Toni's cousin Karen Williams as trustee.

All three trustees make all key decisions concerning any recruitment and appointment of trustees at its meetings.

### About the trustees

The trustees have a mix of personal and professional skills and experience to ensure the charity meets its aims. Toni runs Charlie's Dog Place, a successful dog day care business in Sonning Common, near Reading. The charity harnesses her entrepreneurial drive, wide professional and social network, and her public profile to raise awareness of the charity. Claire's career as a public relations consultant and writer, alongside her organisational skills, means she is well placed to oversee all marketing, social media and press related activity, as well as oversee the daily operations. Karen's work in the graphic design field enables her to provide support for all marketing, advertising and branding activity.

## Achievements and performance

We as the charity's trustees have been extremely proud of the activities we have carried out to date in Charlie's memory and to support the charity's objectives and activities (Objectives and activities section). It has been evident from the response and feedback from the beneficiaries and their families what a difference and positive impact the gifts/treats the charity has provided have made, which only serves to further reinforce our belief in the charity and its work as we move forward.

The charity has held various fundraising events during the period and has benefitted from public donations as well as wonderful fundraisers. The charity has also received various grants as a result of successful application.

A brief summary of some of the key achievements of the charity and its fundraisers during the financial period are as follows:

**March 2022:** 16k Thames walk to celebrate what would have been Charlie's 16<sup>th</sup> birthday. This garnered considerable support with a significant number of participants, where the charity raised £2,600.

**June 2023:** A commemorative fundraiser held at Charlies' former school, Highdown featuring Reading Phoenix Choir. This was attended by members of the public including Charlie's friends as well as stakeholders and the Mayor of Reading. Local businesses also pledged their support by donating beverages for the interval. The event raised in excess of £2,000.

**February 2023:** SJP Foundation awarded the charity a £1,000 grant.

**May 2023:** Reading Crematorium selected Team Charlie as its annual charity and donated £12,000 in proceeds from recycled replacement metal body parts.







READING PHOENIX CHOR

## Somewhere Over the Rainbow: A Concert for Charlie

**Sat 24th June 2023 7:00PM**  
 Highdown School and Sixth Form  
 Centre, Emmer Green  
 U16s £5 / Adults £10  
 Family concessions available






## Financial review

### Statement of the charity's policy on reserves

We aim to hold reserve funds of £5,000 to aid the future growth and sustainability of the charity.

### Details of any deficit

There is no deficit for the financial year this report concerns.

### Donated facilities and services

We do not have any donated facilities and services for the financial year this report concerns.

## Future plans

Unfortunately, the charity has not been able to carry out its original objectives to the degree it desires and had hoped for due to a lack of referrals. While this is good news that there are not as many children being treated with brain tumours and requiring support as the trustees initially perceived, it means the charity is limited at present in illustrating its good work. The trustees have therefore decided to amend the charity's objectives to cover a wider remit, medically, geographically and strategically, to ensure it can help support as many children as possible and carry out purpose and function. Not only will it change the eligibility criteria to make the charity more inclusive by enabling children from all over the UK to apply for support, but all of the trustees have also agreed to offer respite via a holiday home. This will not only serve as a more tangible tribute to Charlie, but enable us to help more children with their families. This will be purchased in part using existing funds, with the remainder via grants, donations and fundraising events in the coming year. This will ensure we reach our set target to cover the purchase of the caravan as well as initial running costs.

After seeking permission from the Charity Commission, the charity's objectives, effective from the new financial year will now be as follows:

*To relieve the needs of families and carers of children who have been diagnosed with brain, neck or spinal tumours living in the UK through the provision of grants for gifts or treats, and family holiday accommodation to offer respite, create a positive experience and/or an opportunity to make memories.*

This also opens up new grant making and fundraising opportunities, as well as previously untapped channels to promote the charity on a nationwide scale, in order to raise awareness and garner increased support. We as the trustees are extremely excited at the prospect of doing this and very much look forward to honouring Charlie's memory on a larger scale, while helping more beneficiaries in his name. Next year, there are plans to hold Charlie's Fest in the centre of Reading, organised by an esteemed manager from the music industry who is local to the area and wanted to support Team Charlie. The charity is also in the process of recruiting and appointing 1-2 patrons who align with the charity's objectives and whose public profiles will help raise awareness and attract further fundraising opportunities.

**Declaration**

Signed on behalf of the charity trustees:



Print name

Claire Brown

Designation

Trustee

Date

30<sup>th</sup> May 2024





Receipts and payments accounts

CC16a

For the period from	31/05/2022	To	30/11/2023
------------------------	------------	----	------------

Section A Receipts and payments

	Unrestricted funds	Restricted funds	Endowment funds	Total funds	Last year
	to the nearest £	to the nearest £	to the nearest £	to the nearest £	to the nearest £
<b>A1 Receipts</b>					
Donations	20,110	-	-	20,110	-
Fundraising	3,708	-	-	3,708	-
Grants	1,000	-	-	1,000	-
	-	-	-	-	-
	-	-	-	-	-
	-	-	-	-	-
	-	-	-	-	-
	-	-	-	-	-
<i>Sub total</i> (Gross income for AR)	24,818	-	-	24,818	-
<b>A2 Asset and investment sales, (see table).</b>					
	-	-	-	-	-
	-	-	-	-	-
<i>Sub total</i>	-	-	-	-	-
<i>Total receipts</i>	24,818	-	-	24,818	-
<b>A3 Payments</b>					
Fundraising costs		-	-	-	-
Beneficiary grants	1,600	-	-	1,600	-
Printing		-	-	-	-

	-	-	-	-	-
	-	-	-	-	-
	-	-	-	-	-
	-	-	-	-	-
	-	-	-	-	-
	-	-	-	-	-
<b>Sub total</b>	<b>1,600</b>	<b>-</b>	<b>-</b>	<b>1,600</b>	<b>-</b>

<b>A4 Asset and investment purchases, (see table)</b>					
	-	-	-	-	
	-	-	-	-	
<b>Sub total</b>	<b>-</b>	<b>-</b>	<b>-</b>	<b>-</b>	<b>-</b>

<b>Total payments</b>	<b>1,600</b>	<b>-</b>	<b>-</b>	<b>1,600</b>	<b>-</b>
-----------------------	--------------	----------	----------	--------------	----------

<b>Net of receipts/(payments)</b>	<b>23,218</b>	<b>-</b>	<b>-</b>	<b>23,218</b>	<b>-</b>
<b>A5 Transfers between funds</b>	<b>-</b>	<b>-</b>	<b>-</b>	<b>-</b>	<b>-</b>
<b>A6 Cash funds last year end</b>	<b>-</b>	<b>-</b>	<b>-</b>	<b>-</b>	<b>-</b>
<b>Cash funds this year end</b>	<b>23,218</b>	<b>-</b>	<b>-</b>	<b>23,218</b>	<b>-</b>

## Section B Statement of assets and liabilities at the end of the period

Categories	Details	Unrestricted funds to nearest £	Restricted funds to nearest £	Endowment funds to nearest £
<b>B1 Cash funds</b>	Cash (Co-operative Account)	23,218	-	-
		-	-	-
		-	-	-
	<b>Total cash funds</b>	<b>23,218</b>	<b>-</b>	<b>-</b>
	(agree balances with receipts and payments account(s))	OK	OK	OK

		Unrestricted funds to nearest £	Restricted funds to nearest £	Endowment funds to nearest £
<b>B2 Other monetary assets</b>	Details			
		-	-	-
		-	-	-
		-	-	-
		-	-	-
		-	-	-
		-	-	-

		Fund to which asset belongs	Cost (optional)	Current value (optional)
<b>B3 Investment assets</b>	Details			
			-	-
			-	-
			-	-
			-	-
			-	-

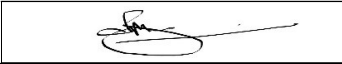
		Fund to which asset belongs	Cost (optional)	Current value (optional)
<b>B4 Assets retained for the charity's own use</b>	Details			
			-	-
			-	-
			-	-
			-	-
			-	-
			-	-
			-	-
			-	-
			-	-

		Fund to which liability relates	Amount due (optional)	When due (optional)
<b>B5 Liabilities</b>	Details			
			-	



		-	
		-	
		-	
		-	

Signed by one or two trustees  
on behalf of all the trustees

Signature	Print Name	Date of approval
<div>  </div>	Claire Brown	30.05.24