



CHARITY COMMISSION
FOR ENGLAND AND WALES

Trustees' Annual Report for the period

From 22/08/2022 Period start date To 31/03/2023

Charity name: Christian Collaboration for Communities

Charity registration number: 1198930

Objectives and Activities

	SORP reference	
Summary of the purposes of the charity as set out in its governing document	Para 1.17	<p>The object of the CIO is for the benefit of the public: To advance the Christian Faith in accordance with the Statement of Beliefs in such ways as the trustees from time to time may think fit</p> <p>Nothing in this constitution shall authorize an application of the property of the CIO for the purposes which are not charitable in accordance with [section 7 of the charities and Trustee investment (Scotland) Act 2005] and [section 2 of the Charities Act (Northern Ireland) 2008]</p>
Summary of the main activities in relation to those purposes for the public benefit, in particular, the activities, projects or services identified in the accounts.	Para 1.17 and 1.19	<p>The object of the CIO is for the benefit of the public: To advance the Christian Faith in accordance with the Statement of Beliefs in such ways as the trustees from time to time may think fit</p> <p>Nothing in this constitution shall authorize an application of the property of the CIO for the purposes which are not charitable in accordance with [section 7 of the charities and Trustee investment (Scotland) Act 2005] and [section 2 of the Charities Act (Northern Ireland) 2008]</p>

Statement confirming whether the trustees have had regard to the guidance issued by the Charity Commission on public benefit	Para 1.18	To some extent- we are seeking external professional support to make sure we are fully aware and comply with the requirements of the Charity Commission.
--	-----------	---

Additional information (optional)

You may choose to include further statements where relevant about:

	SORP reference	
Policy on grant making	Para 1.38	
Policy on social investment including program related investment	Para 1.38	
Contribution made by volunteers	Para 1.38	
Other		

Achievements and Performance

	SORP reference	
Summary of the main achievements of the charity, identifying the difference the charity's work has made to the circumstances of its beneficiaries and any wider benefits to society as a whole.	Para 1.20	<p>This has been the first year of our operation. We have had difficulties in setting up bank accounts and being operational which has limited our abilities to operate financially.</p> <p>However, the voluntary attendance at prayer meetings has increased and the encouragement for each participant to contribute to their local communities irrespective of faith, gender, sexuality and race. This has resulted in attendees having a spiritual relationship with Jesus and being motivated to love, be inclusive and contribute to their local communities.</p>

Additional information (optional)

You may choose to include further statements where relevant about:

--	--	--

Achievements against objectives set	Para 1.41	
Performance of fundraising activities against objectives set	Para 1.41	
Investment performance against objectives	Para 1.41	
Other		

Financial Review

Review of the charity's financial position at the end of the period	Para 1.21	The financial report sets out the income and expenditure. A trustee meeting was convened to present the report, scrutinise and seek approval. The report was approved unanimously.
Statement explaining the policy for holding reserves stating why they are held	Para 1.22	
Amount of reserves held	Para 1.22	
Reasons for holding zero reserves	Para 1.22	
Details of fund materially in deficit	Para 1.24	none
Explanation of any uncertainties about the charity continuing as a going concern	Para 1.23	This is our first year in operation. We are uncertain of all the rules and regulations and are seeking professional help to ensure we are compliant.

Additional information (optional)

You may choose to include further statements where relevant about:

The charity's principal sources of funds (including any fundraising)	Para 1.47	Contributions by members only
Investment policy and objectives including any social investment policy adopted	Para 1.46	
A description of the principal risks facing the charity	Para 1.46	
Other		

Structure, Governance and Management

Description of charity's trusts:		None
Type of governing document (trust deed, royal charter)	Para 1.25	None
How is the charity constituted? (e.g unincorporated association, CIO)	Para 1.25	
Trustee selection methods including details of any constitutional provisions e.g. election to post or name of any person or body entitled to appoint one or more trustees	Para 1.25	

Additional information (optional)

You may choose to include further statements where relevant about:

Policies and procedures adopted for the induction and training of trustees	Para 1.51	
The charity's organisational structure and any wider network with which the charity works	Para 1.51	
Relationship with any related parties	Para 1.51	
Other		

Reference and Administrative details

Charity name	
Other name the charity uses	
Registered charity number	
Charity's principal address	

Names of the charity trustees who manage the charity

	Trustee name	Office (if any)	Dates acted if not for whole year	Name of person (or body) entitled to appoint trustee (if any)
1	Sam Nair	Chair		None
2	Tony Strunkey	Treasurer		
3	Benjamin Yeboah			
4				
5				
6				
7				
8				
9				
10				
11				
12				
13				
14				
15				
16				
17				
18				
19				
20				

Corporate trustees – names of the directors at the date the report was approved

[illegible]

Name of trustees holding title to property belonging to the charity

[illegible]

Funds held as custodian trustees on behalf of others

Description of the assets held in this capacity	
Name and objects of the charity on whose behalf the assets are held and how this falls within the custodian charity's objects	
Details of arrangements for safe custody and segregation of such assets from the charity's own assets	

Additional information (optional)

Names and addresses of advisers (Optional information)

Type of adviser	Name	Address

Name of chief executive or names of senior staff members (Optional information)

--

Exemptions from disclosure

Reason for non-disclosure of key personnel details

--

Other optional information

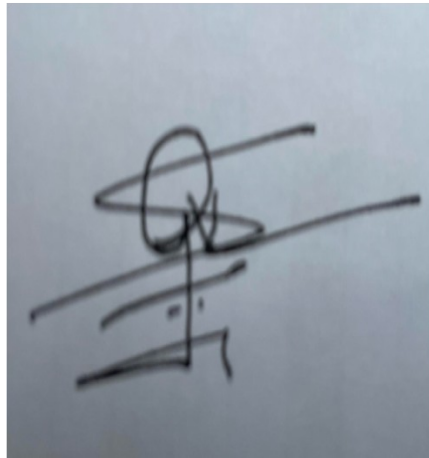
--

Declarations

The trustees declare that they have approved the trustees' report above.

Signed on behalf of the charity's trustees

Signature(s)

A handwritten signature in black ink, appearing to be 'Sam Nair', is written over a light blue background. The signature is stylized with a large loop and a horizontal line.

Full name(s)

Sam Nair

Position (eg Secretary,
Chair, etc)

Chair

Date

05/11/2023

Christian Collaboration for Communities

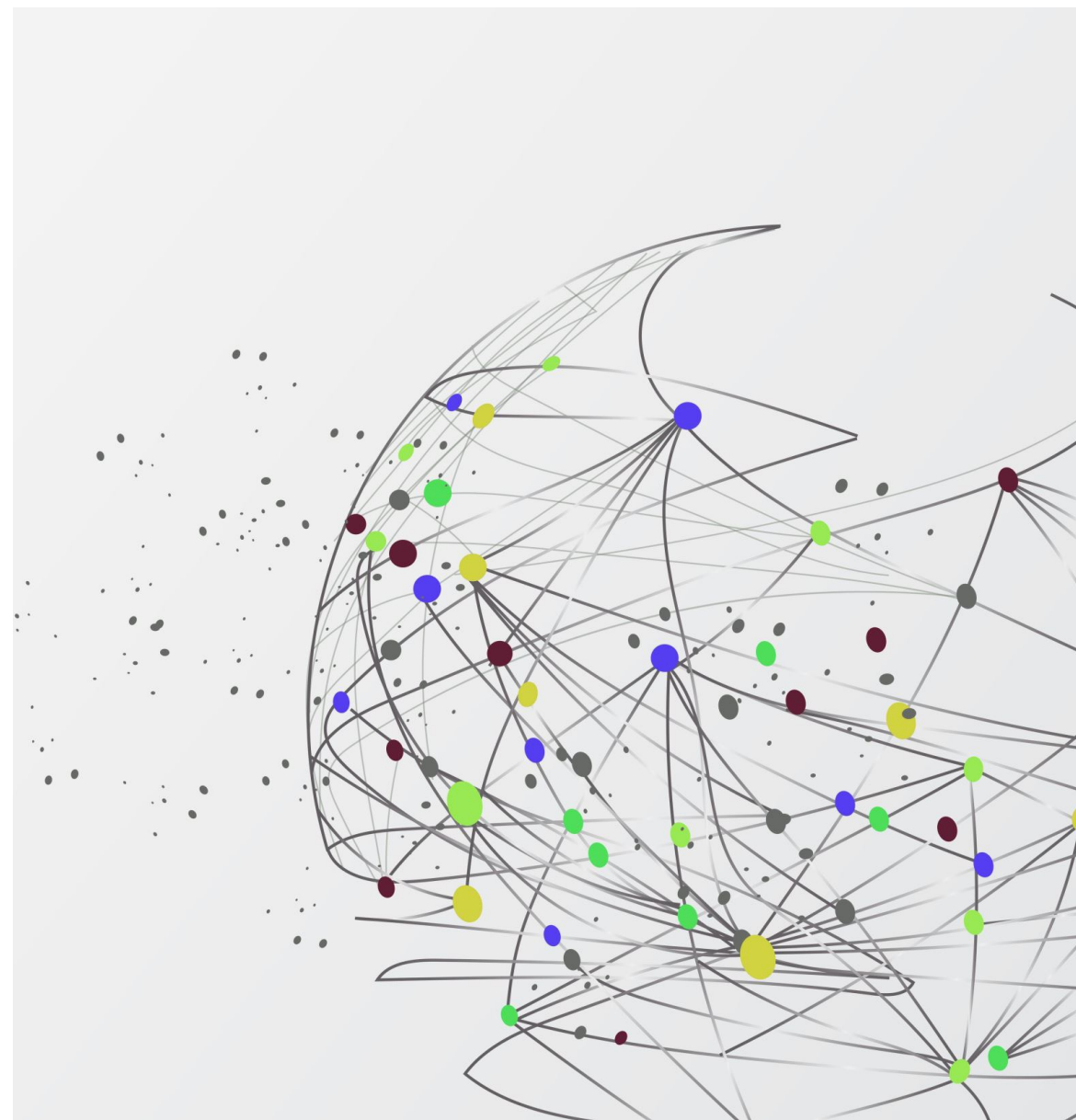
Annual & Finance Report

2022-23



Why- our Purpose

1. We believe God has called us to create informal but yet spiritual environments focused on **Jesus** within **local communities** (homes, pubs, community centers etc).
2. By being a part of this community of faith people will feel enabled to build their relationship with **Jesus** as well as people in their **local communities** (neighborhood, workplace, friends and family)
3. We want this to be a space where we can invite friends and family who may not go to traditional or formal churches
4. Ultimately we want to see more and more communities of faiths in **Jesus** spring up that would love and care for their **local communities** (neighborhood, workplace, friends and family)



Finance Summary

Sum of Amount	Column Labels					
Row Labels	Bank Transfer	Tithe	Bank Charge	Charitable Donation	Staff Training	Grand Total
Apr 23		740	-5			735
Aug 23		350	-5			345
Dec 22		200				200
Feb 23		3825	-5	-500		3320
Jan 23		475	-5			470
Jul 23		900	-5			895
Jun 23		300	-5		-300	-5
Mar 23		270	-5			265
May 23		700	-5			695
Nov 22	150					150
Oct 23			5			5
Sept 23	100	90	-5			185
Grand Total	250	7850	-40	-500	-300	7260
Total Income	8100					
Total Expenditure	-840					
Available Balance	7260					

Our Tithes 2022-23

