

CHRISTIAN COLLABORATION FOR COMMUNITY (CCC)

England & Wales · Charity number 1198930

Details

Status Registered

Legal form CIO

Registered 2022-05-12

Register [View on the Charity Commission register](#)

Contact

Address 39 Belvedere Road
London
E10 7NW

Phone 07886313346

Email CCChousesoffaith@gmail.com

Activities

Objects: THE OBJECT OF THE CIO IS FOR THE BENEFIT OF THE PUBLIC: TO ADVANCE THE CHRISTIAN FAITH IN ACCORDANCE WITH THE STATEMENT OF BELIEFS IN SUCH WAYS AS THE TRUSTEES FROM TIME TO TIME MAY THINK FIT.

Activities: We seek to create informal but yet spiritual environments focused on Jesus within local communities (homes, pubs, community centres etc). We want to see more and more communities of faith in Jesus in the UK and beyond that would love and care for their local communities (neighbourhood, workplace, family and friends).

Classification

- **How:** Provides Advocacy/advice/information
- **What:** Religious Activities
- **Who:** The General Public/mankind

Geography

- Throughout England

Finances

Period end	Income	Expenditure	Assets	Employees
2024-12-31	£6,195	£60	-	-
2023-12-31	£6,680	£1,715	-	-
2022-12-31	£8,100	£840	-	-

Trustees

Name	Role	Appointed
Rev Sam Nair	Chair	2022-08-08
Benjamin Yeboah		2022-08-08
Jatin Yona		2026-04-07
Jennaley Portia Louis		2026-04-07
Toni Stunkey		2022-08-08

CHRISTIAN COLLABORATION FOR COMMUNITY (CCC)

England & Wales - Charity number 1198930

Accounts

Christian Collaboration for Charities

Trustees' Annual Report for the Year Ended 31 December 2024

The Trustees of *Christian Collaboration for Charities* present their Annual Report for the year ended 31 December 2024. The report has been prepared in accordance with the charity's governing document and the requirements of the Charity Commission for England and Wales.

1. Objectives and Activities

The charitable objectives of *Christian Collaboration for Charities* are to advance the Christian faith and to support individuals and communities through spiritual, pastoral, and charitable activities.

During 2024, the charity remained in its infancy, having focused primarily on establishing its spiritual foundation and internal structures. The core activity throughout the year has been the hosting of regular **Sunday gatherings as a worshipping Christian community**. These meetings have emphasised prayer, biblical teaching, worship, and fellowship, as we seek to build a Christ-centred community rooted in love, service, and discipleship.

2. Achievements and Performance

Although still early in our development, we are grateful for the steady progress made. This year the organisation:

- Held consistent **weekly Sunday gatherings**
- Provided pastoral encouragement and spiritual support to attendees
- Established a committed group of founding members and trustees
- Fostered a culture of Christian fellowship, personal growth, and spiritual formation

The Trustees met regularly throughout the year. Discussions have chiefly centred on:

- Strengthening our spiritual life as an organisation
- Defining expectations for **personal and public conduct** aligned with Christian values
- Ensuring that worship remains central to our identity in this formative stage

While outward community activities have not yet commenced, 2024 has been a vital year of laying spiritual, relational, and organisational foundations.

3. Governance and Management

The organisation is overseen by a group of dedicated Trustees who share a common faith and vision. The Trustees have met frequently to review progress, pray, and discern direction. Our governance during 2024 has primarily been developmental in nature, seeking to ensure that our structure, conduct, and decisions honour both legal responsibilities and biblical principles.

4. Financial Review

As an early-stage organisation, income and expenditure in 2024 were minimal and solely related to essential spiritual functions and basic operational needs. The trustees are confident that as activities grow, financial oversight and reporting structures will be strengthened accordingly.

5. Looking Ahead – Plans for 2025 and Beyond

We recognise that our mission goes beyond Sunday worship, and we are preparing for a new season of community engagement and growth. Our forward-looking priorities include:

- **Securing professional administrative and financial services** to strengthen operations and compliance
- **Developing community outreach initiatives** to bless and support local individuals and families
- **Expanding charitable activities** that reflect Christ's compassion in practical ways
- Building partnerships and collaborations with other Christian and community organisations
- Establishing a rhythm of discipleship, service, and mission beyond Sunday gatherings

We believe these steps will enable us to fulfil our charitable purpose more fully and sustainably.

6. Statement of Trustees' Responsibilities

The Trustees acknowledge their responsibility to:

- Ensure appropriate accounting records are maintained
 - Prepare an annual report and financial statements in accordance with applicable law
 - Safeguard the assets of the charity and ensure their proper application
-

Conclusion

The trustees give thanks for God's grace throughout 2024. Although our activities have so far centred on worship and spiritual development, we remain confident that the foundations laid this year will enable significant growth and meaningful community impact in the years ahead. We remain committed to serving God, strengthening His Church, and demonstrating Christ's love in word and action.

Signed on behalf of the Trustees,

Sam Nair

Chair of Trustees

Date: 24th October 2025

The Trustees of Christian Collaboration for Charities present their Annual Report governing document and the requirements of the Charity Commission for England.

1. Objectives and Activities

The charitable objectives of Christian Collaboration for Charities are to advance activities.

During 2024, the charity remained in its infancy, having focused primarily on the hosting of regular Sunday gatherings as a worshipping Christian community a Christ-centred community rooted in love, service, and discipleship.

2. Achievements and Performance

Although still early in our development, we are grateful for the steady progress

- Held consistent weekly Sunday gatherings
- Provided pastoral encouragement and spiritual support to attendees
- Established a committed group of founding members and trustees
- Fostered a culture of Christian fellowship, personal growth, and spiritual formation

The Trustees met regularly throughout the year. Discussions have chiefly centred on

- Strengthening our spiritual life as an organisation
- Defining expectations for personal and public conduct aligned with Christian principles
- Ensuring that worship remains central to our identity in this formative stage

While outward community activities have not yet commenced, 2024 has been a

3. Governance and Management

The organisation is overseen by a group of dedicated Trustees who share a common vision. Our governance during 2024 has primarily been developmental in nature, seeking to establish sound principles.

4. Financial Review

As an early-stage organisation, income and expenditure in 2024 were minimal and that as activities grow, financial oversight and reporting structures will be strengthened.

5. Looking Ahead – Plans for 2025 and Beyond

We recognise that our mission goes beyond Sunday worship, and we are preparing to

- Securing professional administrative and financial services to strengthen operations
- Developing community outreach initiatives to bless and support local individuals
- Expanding charitable activities that reflect Christ's compassion in practical ways
- Building partnerships and collaborations with other Christian and community organisations
- Establishing a rhythm of discipleship, service, and mission beyond Sunday gatherings

We believe these steps will enable us to fulfil our charitable purpose more fully in the coming year.

6. Statement of Trustees' Responsibilities

The Trustees acknowledge their responsibility to:

- Ensure appropriate accounting records are maintained
- Prepare an annual report and financial statements in accordance with applicable law
- Safeguard the assets of the charity and ensure their proper application

Conclusion

The trustees give thanks for God's grace throughout 2024. Although our activities laid this year will enable significant growth and meaningful community impact in the future, we remain committed to Christ's love in word and action.

Signed on behalf of the Trustees,

Sam Nair

Chair of Trustees

Date: 24th October 2025

ance with the charity's

. pastoral, and charitable

ghout the year has been
rship, as we seek to build

r, and discern direction.
isibilities and biblical

e trustees are confident

g priorities include:

nt that the foundations
rch, and demonstrating

Date	Description	Amount	Balance
	TOTAL CHARGES TO		
3-Jan-24	12DEC2023	-5	7,014.70
	Balance brought		
13-Jan-24	forward		7,014.70
	STRUNKEY I TIETH	300	7,019.70
14-Jan-24	WARD S S + T	75	7,089.70
27-Jan-24	B Nair Tithe from Bev	100	7,189.70
28-Jan-24	WARD S S + T	50	7,239.70
29-Jan-24	R MCVEIGH RM TITHE	40	7,279.70
30-Jan-24	STRUNKEY I TIETH	300	7,579.70
	TOTAL CHARGES TO		
3-Feb-24	12JAN2024	-5	7,574.70
	R Abraham Remo Mic		
5-Feb-24	ABRAHAM	30	7,604.70
11-Feb-24	WARD S S + T	70	7,674.70
25-Feb-24	WARD S S + T	50	7,724.70
28-Feb-24	R MCVEIGH RM TITHE	40	7,764.70
1-Mar-24	STRUNKEY I TIETH	300	8,064.70
	TOTAL CHARGES TO		
5-Mar-24	12FEB2024	-5	8,059.70
16-Mar-24	B Nair TITHE Feb BEV	100	8,159.70
24-Mar-24	WARD S S + T	40	8,199.70
28-Mar-24	R MCVEIGH RM TITHE	40	8,239.70
29-Mar-24	WARD S S + T	50	8,289.70
31-Mar-24	STRUNKEY I TIETH	300	8,589.70
2-Apr-24	B Nair TITHE March BEV	100	8,689.70
	TOTAL CHARGES TO		
3-Apr-24	12MAR2024	-5	8,684.70
29-Apr-24	R MCVEIGH RM TITHE	40	8,724.70
30-Apr-24	STRUNKEY I TIETH	300	9,024.70
2-May-24	B Nair TITHE BEV	100	9,124.70
	TOTAL CHARGES TO		
4-May-24	12APR2024	-5	9,119.70
10-May-24	NAIR SG Tithe	200	9,319.70
28-May-24	R MCVEIGH RM TITHE	40	9,359.70
31-May-24	STRUNKEY I TIETH	300	9,659.70
	R Abraham Remo Mic		
2-Jun-24	ABRAHAM	30	9,689.70
3-Jun-24	TITHE NAIR SG	200	9879.7
	TOTAL CHARGES TO		
3-Jun-24	12MAY2024	-5	9,884.70
8-Jun-24	B Nair TITHE BEV	100	9,984.70
9-Jun-24	B Nair TITHE BEV	20	10,004.70

Louis Portia PORTIA-		
13-Jun-24 TITHE	10	10,014.70
28-Jun-24 R MCVEIGH RM TITHE	40	10,054.70
1-Jul-24 TITHE NAIR SG	200	10254.7
1-Jul-24 STRUNKEY I TIETH	300	10,554.70
2-Jul-24 B Nair TITHE BEV	100	10,654.70
TOTAL CHARGES TO		
4-Jul-24 12JUN2024	-5	10,649.70
Louis Portia PORTIA-		
25-Jul-24 TITHE	10	10,659.70
29-Jul-24 R MCVEIGH RM TITHE	40	10,699.70
30-Jul-24 STRUNKEY I TIETH	300	10,999.70
TOTAL CHARGES TO		
3-Aug-24 12JUL2024	-5	10,994.70
Louis Portia PORTIA-		
10-Aug-24 TITHE	14	11,008.70
12-Aug-24 B NAIR TITHE BEV	100	11,108.70
Louis Portia PORTIA-		
15-Aug-24 TITHE	49	11,157.70
28-Aug-24 R MCVEIGH RM TITHE	40	11,197.70
1-Sep-24 STRUNKEY I TIETH	300	11,497.70
TOTAL CHARGES TO		
3-Sep-24 12AUG2024	-5	
Louis Portia PORTIA-		
3-Sep-24 TITHE	20	11,512.70
10-Sep-24 B NAIR TITHE BEV	100	11,612.70
Louis Portia PORTIA-		
13-Sep-24 TITHE	28	11,640.70
28-Sep-24 STRUNKEY I TIETH	300	11,940.70
30-Sep-24 R MCVEIGH RM TITHE	40	11,980.70
TOTAL CHARGES TO		
4-Oct-24 12SEP2024	-5	11,975.70
10-Oct-24 B NAIR TITHE BEV	100	12,075.70
Louis Portia PORTIA-		
15-Oct-24 TITHE	34	12,109.70
Louis Portia PORTIA-		
25-Oct-24 TITHE	67	12,176.70
28-Oct-24 R MCVEIGH RM TITHE	40	12,216.70
TOTAL CHARGES TO		
3-Nov-24 12OCT2024	-5	12,211.70
11-Nov-24 B NAIR TITHE BEV	100	12,311.70
Louis Portia PORTIA-		
21-Nov-24 TITHE	40	12,351.70
28-Nov-24 R MCVEIGH RM TITHE	40	12,391.70

Louis Portia PORTIA-		
29-Nov-24 TITHE	128	12,519.70
2-Dec-24 STRUNKEY I TIETH	240	12,759.70
TOTAL CHARGES TO		
4-Dec-24 12NOV2024	-5	12,754.70
10-Dec-24 B NAIR TITHE BEV	100	12,854.70

Category	Month
Bank Charge	1
Bank Transfer	1
Tithe	1
Tithe	1
Tithe	1
Tithe	1
Tithe	1
Tithe	1
Bank Charge	2
Tithe	2
Tithe	2
Tithe	2
Tithe	2
Tithe	3
Bank Charge	3
Tithe	3
Tithe	3
Tithe	3
Tithe	3
Tithe	3
Tithe	4
Bank Charge	4
Tithe	4
Tithe	4
Tithe	5
Bank Charge	5
Tithe	5
Tithe	5
Tithe	5
Tithe	6
Tithe	6
Bank Charge	6
Tithe	6
Tithe	6

Tithe	6
Tithe	6
Tithe	7
Tithe	7
Tithe	7
Bank Charge	7
Tithe	7
Tithe	7
Tithe	7
Bank Charge	8
Tithe	8
Tithe	8
Tithe	8
Tithe	8
Tithe	9
Bank Charge	9
Tithe	9
Tithe	9
Tithe	9
Tithe	9
Tithe	9
Bank Charge	9
Tithe	9
Tithe	9
Tithe	9
Bank Charge	10
Tithe	10
Tithe	10
Tithe	10
Tithe	10
Tithe	10
Bank Charge	11
Tithe	11
Tithe	11
Tithe	11
Tithe	11

Tithe	11
Tithe	12
Bank Charge	12
Tithe	12

Category	Subcategory
Income	Cash
Income	Tithe
Income	Bank Transfer
Income	Gift Aid
Income	Card
Income	Grants
Charitable Activities	Ticket Income
Charitable Activities	Resource Expenditure
Charitable Activities	Charitable Donation
Overhead Costs	Salaries
Overhead Costs	National Insurance
Overhead Costs	Pensions
Overhead Costs	Allowances
Overhead Costs	Equipment
Overhead Costs	Insurance
Overhead Costs	Bank Charge
Overhead Costs	Rentals and Loan Repayments
Overhead Costs	Subscriptions
Overhead Costs	Hospitality
Overhead Costs	Staff Training
Overhead Costs	Stationery, etc.
Overhead Costs	Bank Charge

MONTHLY MANAGEMENT ACCOUNT

How to use this sheet

1. Add all your transactions to the "Transactions" sheet. Only add data in columns A,
2. For each transaction, select a relevant category in column E.
- 2a. If a relevant category does not exist, add it in the Categories sheet.
3. Select a cell in the table below, then select the "PivotTable Analyze" menu item (ir

	Category	Data		
	Bank Transfer		Tithe	
Month	Count of Balance	Sum of Amount	Count of Balance	Sum of Amount
1		1	6	865
2			4	190
11			4	308
12			2	340
3			6	830
4			3	440
5			4	640
6			6	400
7			6	950
8			4	203
9			6	788
10			4	241
Total Result		1	55	6195

B and C.

1 Excel) and then press the "Refresh" button.

Bank Charge			Total Count of Balan	Total Sum of Amou
Count of Balance	Sum of Amount			
1	-5		8	860
1	-5		5	185
1	-5		5	303
1	-5		3	335
1	-5		7	825
1	-5		4	435
1	-5		5	635
1	-5		7	395
1	-5		7	945
1	-5		5	198
	-5		6	783
1	-5		5	236
11	-60		67	6135

nt

Description

13-Jan-24 Balance brought forward

2-Jan-24 STRUNKEY I TIETH
14-Jan-24 WARD S S + T
27-Jan-24 B Nair Tithe from Bev
28-Jan-24 WARD S S + T
29-Jan-24 R MCVEIGH RM TITHE
30-Jan-24 STRUNKEY I TIETH

3-Feb-24 TOTAL CHARGES TO 12JAN2024

5-Feb-24 R Abraham Remo Mic ABRAHAM
11-Feb-24 WARD S S + T
25-Feb-24 WARD S S + T
28-Feb-24 R MCVEIGH RM TITHE
1-Mar-24 STRUNKEY I TIETH

5-Mar-24 TOTAL CHARGES TO 12FEB2024

16-Mar-24 B Nair TITHE Feb BEV
24-Mar-24 WARD S S + T
28-Mar-24 R MCVEIGH RM TITHE
29-Mar-24 WARD S S + T
31-Mar-24 STRUNKEY I TIETH
2-Apr-24 B Nair TITHE March BEV

3-Apr-24 TOTAL CHARGES TO 12MAR2024

29-Apr-24 R MCVEIGH RM TITHE
30-Apr-24 STRUNKEY I TIETH
2-May-24 B Nair TITHE BEV

4-May-24 TOTAL CHARGES TO 12APR2024

10-May-24 NAIR SG Tithe
28-May-24 R MCVEIGH RM TITHE
31-May-24 STRUNKEY I TIETH

2-Jun-24 R Abraham Remo Mic ABRAHAM
3-Jun-24 TITHE NAIR SG

3-Jun-24 TOTAL CHARGES TO 12MAY2024

8-Jun-24 B Nair TITHE BEV

9-Jun-24 B Nair TITHE BEV

13-Jun-24 Louis Portia PORTIA-TITHE

28-Jun-24 R MCVEIGH RM TITHE

1-Jul-24 TITHE NAIR SG

1-Jul-24 STRUNKEY I TIETH

2-Jul-24 B Nair TITHE BEV

4-Jul-24 TOTAL CHARGES TO 12JUN2024

25-Jul-24 Louis Portia PORTIA-TITHE

29-Jul-24 R MCVEIGH RM TITHE

30-Jul-24 STRUNKEY I TIETH

3-Aug-24 TOTAL CHARGES TO 12JUL2024

10-Aug-24 Louis Portia PORTIA-TITHE

12-Aug-24 B NAIR TITHE BEV

25-Jul-24 Louis Portia PORTIA-TITHE

29-Jul-24 R MCVEIGH RM TITHE

30-Jul-24 STRUNKEY I TIETH

3-Aug-24 TOTAL CHARGES TO 12JUL2024

10-Aug-24 Louis Portia PORTIA-TITHE

12-Aug-24 B NAIR TITHE BEV

15-Aug-24 Louis Portia PORTIA-TITHE

28-Aug-24 R MCVEIGH RM TITHE

1-Sep-24 STRUNKEY I TIETH

3-Sep-24 TOTAL CHARGES TO 12AUG2024

3-Sep-24 Louis Portia PORTIA-TITHE

10-Sep-24 B NAIR TITHE BEV
13-Sep-24 Louis Portia PORTIA-TITHE
28-Sep-24 STRUNKEY I TIETH
30-Sep-24 R MCVEIGH RM TITHE

4-Oct-24 TOTAL CHARGES TO 12SEP2024
10-Oct-24 B NAIR TITHE BEV
28-Sep-24 STRUNKEY I TIETH
30-Sep-24 R MCVEIGH RM TITHE

4-Oct-24 TOTAL CHARGES TO 12SEP2024
10-Oct-24 B NAIR TITHE BEV
15-Oct-24 Louis Portia PORTIA-TITHE
25-Oct-24 Louis Portia PORTIA-TITHE
28-Oct-24 R MCVEIGH RM TITHE

3-Nov-24 TOTAL CHARGES TO 12OCT2024
11-Nov-24 B NAIR TITHE BEV
21-Nov-24 Louis Portia PORTIA-TITHE
28-Nov-24 R MCVEIGH RM TITHE
29-Nov-24 Louis Portia PORTIA-TITHE
2-Dec-24 STRUNKEY I TIETH

4-Dec-24 TOTAL CHARGES TO 12NOV2024
10-Dec-24 B NAIR TITHE BEV

Paid in Balance

	7,014.70
300	7,019.70
75	7,089.70
100	7,189.70
50	7,239.70
40	7,279.70
300	7,579.70
-5	7,574.70
30	7,604.70
70	7,674.70
50	7,724.70
40	7,764.70
300	8,064.70
-5	8,059.70
100	8,159.70
40	8,199.70
40	8,239.70
50	8,289.70
300	8,589.70
100	8,689.70
-5	8,684.70
40	8,724.70
300	9,024.70
100	9,124.70
-5	9,119.70
200	9,319.70
40	9,359.70
300	9,659.70

30	9,689.70
200	9,889.70

-5	9,884.70
100	9,984.70
20	10,004.70
10	10,014.70
40	10,054.70
200	10,254.70
300	10,554.70
100	10,654.70

-5	10,649.70
10	10,659.70
40	10,699.70
300	10,999.70

-5	10,994.70
14	11,008.70
100	11,108.70
10	10,659.70
40	10,699.70
300	10,999.70

-5	10,994.70
14	11,008.70
100	11,108.70
49	11,157.70
40	11,197.70
300	11,497.70

-5	
20	11,512.70

100	11,612.70
28	11,640.70
300	11,940.70
40	11,980.70

-5	11,975.70
100	12,075.70
300	11,940.70
40	11,980.70

-5	11,975.70
100	12,075.70
34	12,109.70
67	12,176.70
40	12,216.70

-5	12,211.70
100	12,311.70
40	12,351.70
40	12,391.70
128	12,519.70
240	12,759.70

-5	12,754.70
100	12,854.70

-5,840.00

CHRISTIAN COLLABORATION FOR COMMUNITY (CCC)

England & Wales - Charity number 1198930

Accounts



Trustees' Annual Report for the period

From 22/08/2022 Period start date To 31/03/2023

Charity name: Christian Collaboration for Communities

Charity registration number: 1198930

Objectives and Activities

	SORP reference	
Summary of the purposes of the charity as set out in its governing document	Para 1.17	<p>The object of the CIO is for the benefit of the public: To advance the Christian Faith in accordance with the Statement of Beliefs in such ways as the trustees from time to time may think fit</p> <p>Nothing in this constitution shall authorize an application of the property of the CIO for the purposes which are not charitable in accordance with [section 7 of the charities and Trustee investment (Scotland) Act 2005] and [section 2 of the Charities Act (Northern Ireland) 2008]</p>
Summary of the main activities in relation to those purposes for the public benefit, in particular, the activities, projects or services identified in the accounts.	Para 1.17 and 1.19	<p>The object of the CIO is for the benefit of the public: To advance the Christian Faith in accordance with the Statement of Beliefs in such ways as the trustees from time to time may think fit</p> <p>Nothing in this constitution shall authorize an application of the property of the CIO for the purposes which are not charitable in accordance with [section 7 of the charities and Trustee investment (Scotland) Act 2005] and [section 2 of the Charities Act (Northern Ireland) 2008]</p>
Statement confirming whether the trustees have had regard to the guidance issued by the Charity	Para 1.18	To some extent- we are seeking external professional support to make sure we are fully aware and comply with the requirements of the Charity Commission.

Commission on public benefit		
------------------------------	--	--

Additional information (optional)

You may choose to include further statements where relevant about:

	SORP reference	
Policy on grant making	Para 1.38	We are not making any grants at the moment and do not seek to do so for the foreseeable future
Policy on social investment including program related investment	Para 1.38	We do not intend to do so for the foreseeable future
Contribution made by volunteers	Para 1.38	Contributions made by volunteers is around coming together to worship, finding ways to be involved in local communities to support and assist on a personal capacity.
Other		

Achievements and Performance

	SORP reference	
Summary of the main achievements of the charity, identifying the difference the charity's work has made to the circumstances of its beneficiaries and any wider benefits to society as a whole.	Para 1.20	<p>This has been the second year of our operation. We have had difficulties in setting up bank accounts and being operational which has limited our abilities to operate financially.</p> <p>However, the voluntary attendance at prayer meetings has increased and the encouragement for each participant to contribute to their local communities irrespective of faith, gender, sexuality and race. This has resulted in attendees having a spiritual relationship with Jesus and being motivated to love, be inclusive and contribute to their local communities.</p>

Additional information (optional)

You may choose to include further statements where relevant about:

Achievements against objectives set	Para 1.41	
-------------------------------------	-----------	--

Performance of fundraising activities against objectives set	Para 1.41	
Investment performance against objectives	Para 1.41	
Other		

Financial Review

Review of the charity's financial position at the end of the period	Para 1.21	The financial report sets out the income and expenditure. A trustee meeting was convened to present the report, scrutinise and seek approval. The report was approved unanimously.
Statement explaining the policy for holding reserves stating why they are held	Para 1.22	
Amount of reserves held	Para 1.22	
Reasons for holding zero reserves	Para 1.22	
Details of fund materially in deficit	Para 1.24	None
Explanation of any uncertainties about the charity continuing as a going concern	Para 1.23	This is our second year in operation. We are uncertain of all the rules and regulations and are seeking professional help to ensure we are compliant.

Additional information (optional)

You may choose to include further statements where relevant about:

The charity's principal sources of funds (including any fundraising)	Para 1.47	Contributions by members only
Investment policy and objectives including any social investment policy adopted	Para 1.46	None
A description of the principal risks facing the charity	Para 1.46	
Other		

Structure, Governance and Management

Description of charity's trusts:		None
Type of governing document (trust deed, royal charter)	Para 1.25	None
How is the charity constituted? (e.g unincorporated association, CIO)	Para 1.25	
Trustee selection methods including details of any constitutional provisions e.g. election to post or name of any person or body entitled to appoint one or more trustees	Para 1.25	

Additional information (optional)

You may choose to include further statements where relevant about:

Policies and procedures adopted for the induction and training of trustees	Para 1.51	
The charity's organisational structure and any wider network with which the charity works	Para 1.51	
Relationship with any related parties	Para 1.51	
Other		

Reference and Administrative details

Charity name	
Other name the charity uses	
Registered charity number	
Charity's principal address	

Names of the charity trustees who manage the charity

	Trustee name	Office (if any)	Dates acted if not for whole year	Name of person (or body) entitled to appoint trustee (if any)
1	Sam Nair	Chair		None
2	Tony Strunkey	Treasurer		
3	Benjamin Yeboah	Member		
4				
5				
6				
7				
8				
9				
10				
11				
12				
13				
14				
15				
16				
17				
18				
19				
20				

Corporate trustees – names of the directors at the date the report was approved

Director name		

Name of trustees holding title to property belonging to the charity

Trustee name	Dates acted if not for whole year	

Funds held as custodian trustees on behalf of others

Description of the assets held in this capacity	None
Name and objects of the charity on whose behalf the assets are held and how this falls within the custodian charity's objects	None
Details of arrangements for safe custody and segregation of such assets from the charity's own assets	None

Additional information (optional)

Names and addresses of advisers (Optional information)

Type of adviser	Name	Address
-----------------	------	---------

Name of chief executive or names of senior staff members (Optional information)

--

Exemptions from disclosure

Reason for non-disclosure of key personnel details

--

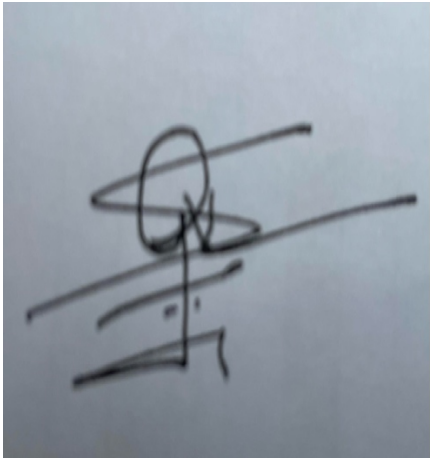
Other optional information

--

Declarations

The trustees declare that they have approved the trustees' report above.

Signed on behalf of the charity's trustees

Signature(s)		
Full name(s)	Sam Nair	
Position (eg Secretary, Chair, etc)	Chair	
Date	31/10/2024	

CHRISTIAN COLLABORATION FOR COMMUNITY (CCC)

England & Wales - Charity number 1198930

Accounts



Trustees' Annual Report for the period

From 22/08/2022 Period start date To 31/03/2023

Charity name: Christian Collaboration for Communities

Charity registration number: 1198930

Objectives and Activities

	SORP reference	
Summary of the purposes of the charity as set out in its governing document	Para 1.17	<p>The object of the CIO is for the benefit of the public: To advance the Christian Faith in accordance with the Statement of Beliefs in such ways as the trustees from time to time may think fit</p> <p>Nothing in this constitution shall authorize an application of the property of the CIO for the purposes which are not charitable in accordance with [section 7 of the charities and Trustee investment (Scotland) Act 2005] and [section 2 of the Charities Act (Northern Ireland) 2008]</p>
Summary of the main activities in relation to those purposes for the public benefit, in particular, the activities, projects or services identified in the accounts.	Para 1.17 and 1.19	<p>The object of the CIO is for the benefit of the public: To advance the Christian Faith in accordance with the Statement of Beliefs in such ways as the trustees from time to time may think fit</p> <p>Nothing in this constitution shall authorize an application of the property of the CIO for the purposes which are not charitable in accordance with [section 7 of the charities and Trustee investment (Scotland) Act 2005] and [section 2 of the Charities Act (Northern Ireland) 2008]</p>

Statement confirming whether the trustees have had regard to the guidance issued by the Charity Commission on public benefit	Para 1.18	To some extent- we are seeking external professional support to make sure we are fully aware and comply with the requirements of the Charity Commission.
--	-----------	---

Additional information (optional)

You may choose to include further statements where relevant about:

	SORP reference	
Policy on grant making	Para 1.38	
Policy on social investment including program related investment	Para 1.38	
Contribution made by volunteers	Para 1.38	
Other		

Achievements and Performance

	SORP reference	
Summary of the main achievements of the charity, identifying the difference the charity's work has made to the circumstances of its beneficiaries and any wider benefits to society as a whole.	Para 1.20	<p>This has been the first year of our operation. We have had difficulties in setting up bank accounts and being operational which has limited our abilities to operate financially.</p> <p>However, the voluntary attendance at prayer meetings has increased and the encouragement for each participant to contribute to their local communities irrespective of faith, gender, sexuality and race. This has resulted in attendees having a spiritual relationship with Jesus and being motivated to love, be inclusive and contribute to their local communities.</p>

Additional information (optional)

You may choose to include further statements where relevant about:

--	--	--

Achievements against objectives set	Para 1.41	
Performance of fundraising activities against objectives set	Para 1.41	
Investment performance against objectives	Para 1.41	
Other		

Financial Review

Review of the charity's financial position at the end of the period	Para 1.21	The financial report sets out the income and expenditure. A trustee meeting was convened to present the report, scrutinise and seek approval. The report was approved unanimously.
Statement explaining the policy for holding reserves stating why they are held	Para 1.22	
Amount of reserves held	Para 1.22	
Reasons for holding zero reserves	Para 1.22	
Details of fund materially in deficit	Para 1.24	none
Explanation of any uncertainties about the charity continuing as a going concern	Para 1.23	This is our first year in operation. We are uncertain of all the rules and regulations and are seeking professional help to ensure we are compliant.

Additional information (optional)

You may choose to include further statements where relevant about:

The charity's principal sources of funds (including any fundraising)	Para 1.47	Contributions by members only
Investment policy and objectives including any social investment policy adopted	Para 1.46	
A description of the principal risks facing the charity	Para 1.46	
Other		

Structure, Governance and Management

Description of charity's trusts:		None
Type of governing document (trust deed , royal charter)	Para 1.25	None
How is the charity constituted? (e.g unincorporated association , CIO)	Para 1.25	
Trustee selection methods including details of any constitutional provisions e.g. election to post or name of any person or body entitled to appoint one or more trustees	Para 1.25	

Additional information (optional)

You may choose to include further statements where relevant about:

Policies and procedures adopted for the induction and training of trustees	Para 1.51	
The charity's organisational structure and any wider network with which the charity works	Para 1.51	
Relationship with any related parties	Para 1.51	
Other		

Reference and Administrative details

Charity name	
Other name the charity uses	
Registered charity number	
Charity's principal address	

Names of the charity trustees who manage the charity

	Trustee name	Office (if any)	Dates acted if not for whole year	Name of person (or body) entitled to appoint trustee (if any)
1	Sam Nair	Chair		None
2	Tony Strunkey	Treasurer		
3	Benjamin Yeboah			
4				
5				
6				
7				
8				
9				
10				
11				
12				
13				
14				
15				
16				
17				
18				
19				
20				

Corporate trustees – names of the directors at the date the report was approved

Director name		

Name of trustees holding title to property belonging to the charity

Trustee name	Dates acted if not for whole year	

Funds held as custodian trustees on behalf of others

Description of the assets held in this capacity	
Name and objects of the charity on whose behalf the assets are held and how this falls within the custodian charity's objects	
Details of arrangements for safe custody and segregation of such assets from the charity's own assets	

Additional information (optional)

Names and addresses of advisers (Optional information)

Type of adviser	Name	Address

Name of chief executive or names of senior staff members (Optional information)

--

Exemptions from disclosure

Reason for non-disclosure of key personnel details

--

Other optional information

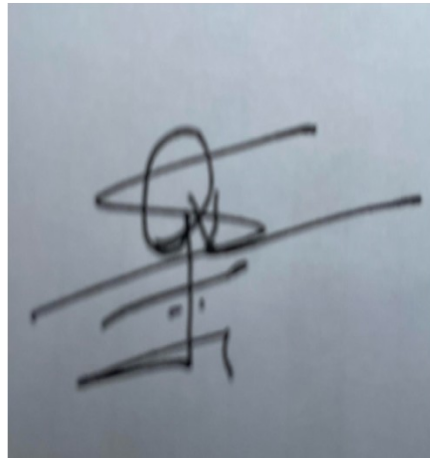
--

Declarations

The trustees declare that they have approved the trustees' report above.

Signed on behalf of the charity's trustees

Signature(s)

A handwritten signature in black ink, appearing to be 'Sam Nair', is written on a light blue background. The signature is stylized with a large loop at the top and a long horizontal stroke extending to the right.

Full name(s) Sam Nair

Position (eg Secretary,
Chair, etc)

Chair

Date 05/11/2023

Christian Collaboration for Communities

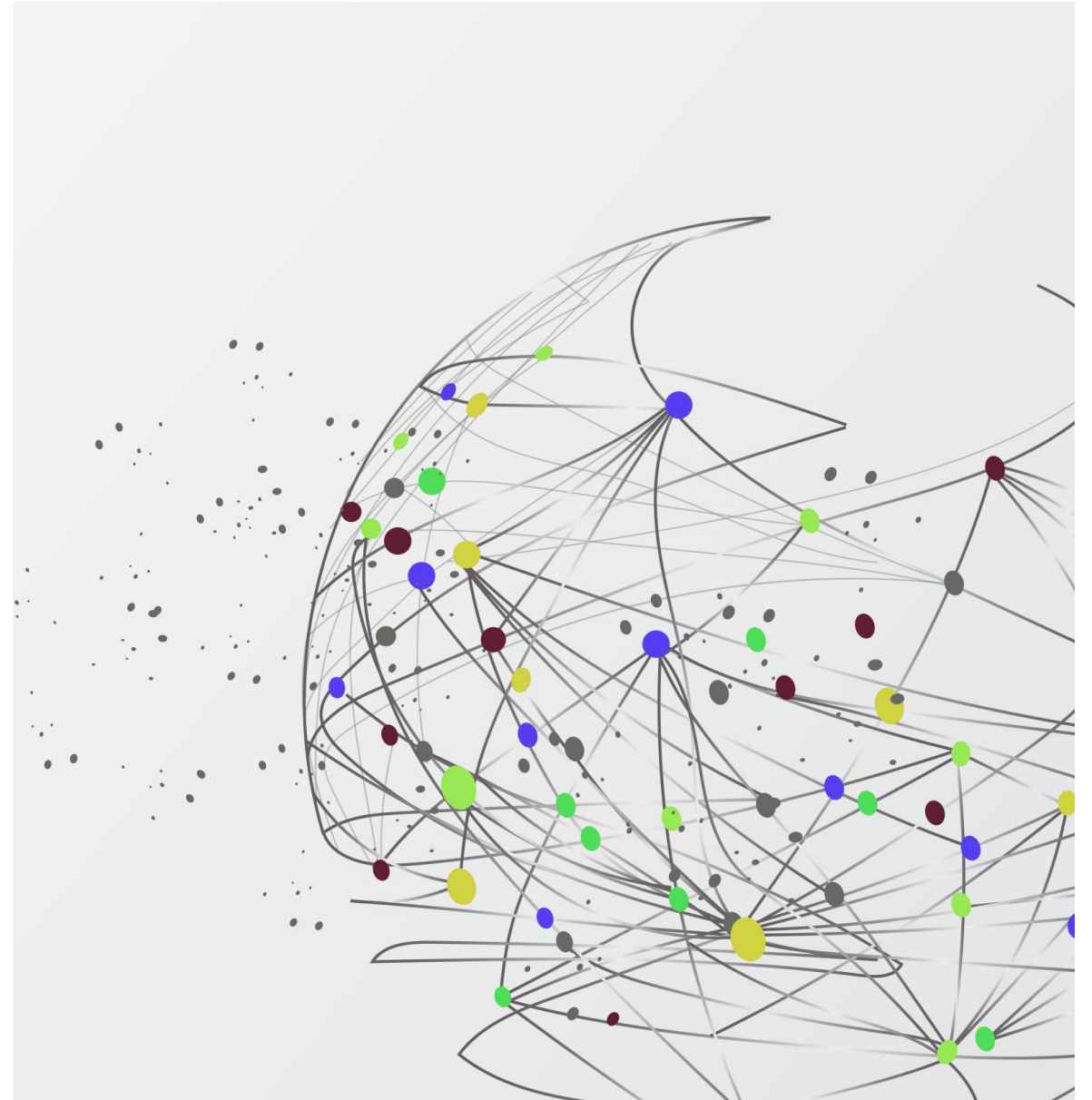
Annual & Finance Report

2022-23



Why- our Purpose

1. We believe God has called us to create informal but yet spiritual environments focused on **Jesus** within **local communities** (homes, pubs, community centers etc).
2. By being a part of this community of faith people will feel enabled to build their relationship with **Jesus** as well as people in their **local communities** (neighborhood, workplace, friends and family)
3. We want this to be a space where we can invite friends and family who may not go to traditional or formal churches
4. Ultimately we want to see more and more communities of faiths in **Jesus** spring up that would love and care for their **local communities** (neighborhood, workplace, friends and family)



Finance Summary

Sum of Amount	Column Labels					
Row Labels	Bank Transfer	Tithe	Bank Charge	Charitable Donation	Staff Training	Grand Total
Apr 23		740	-5			735
Aug 23		350	-5			345
Dec 22		200				200
Feb 23		3825	-5	-500		3320
Jan 23		475	-5			470
Jul 23		900	-5			895
Jun 23		300	-5		-300	-5
Mar 23		270	-5			265
May 23		700	-5			695
Nov 22	150					150
Oct 23			5			5
Sept 23	100	90	-5			185
Grand Total	250	7850	-40	-500	-300	7260
Total Income	8100					
Total Expenditur	-840					
Available Balance	7260					

Our Tithes 2022-23

