

GATEWAY INTO THE COMMUNITY
(A registered Charity)

CHARITY NUMBER 1198034

TRUSTEES REPORT AND
UNAUDITED FINANCIAL STATEMENTS

FOR THE YEAR ENDED 31 March 2025

Richard Alsept Chartered Accountant
16 Burlington Terrace
Cardiff
CF5 1GG

GATEWAY INTO THE COMMUNITY

LEGAL AND ADMINISTRATIVE INFORMATION

NAME OF CHARITY: Gateway into the Community

ORGANISATION TYPE: CIO

REGISTERED No: 1198034

TRUSTEES: Rosemary Theobalds (Chair)
Caroline Harris (resigned 3rd April 2024)
Catherine Mousette (resigned 6th June 2025)
Timothy Raine (resigned 3rd April 2024)
Joyce Winder
Paul White
Liz Holmes (appointed 3rd April 2024)

KEY MANAGEMENT PERSONNEL: Julia Ferguson – Chief Executive

PRINCIPAL OFFICE: 3 St Marys Wynd
Hexham
Northumberland
NE46 1LW

INDEPENDENT EXAMINER: Richard Alsept Chartered Accountant
16 Burlington Terrace
Cardiff
CF5 1GG

BANKERS: Lloyds Bank
98 Victoria Street
London
SW1E 5JL

Unity Trust Bank
Nine Brindley Place
Birmingham
B1 2HB

GATEWAY INTO THE COMMUNITY

CONTENTS	Page
Trustees Report	1 - 8
Independent Examiners Report	9
Statement of Financial Activities	10
Balance Sheet	11
Notes to the Financial Statements	12 - 19

TRUSTEES REPORT FOR THE PERIOD ENDED 31 MARCH 2025

Introduction

The Trustees present their report and the financial statements for the year ended 31 March 2025.

The Trustees have prepared the annual report and financial statements in accordance with the provisions of the statement of Recommended Practice (SORP) "Accounting and Reporting by Charities" issued in January 2019.

STRUCTURE, GOVERNANCE AND MANAGEMENT

Governance

Gateway into the Community is a registered Charitable Incorporated Organisation (CIO). It registered as a CIO on 23rd February 2022. Its Governing Document was adopted on 23rd February 2022. Gateway into the Community enables people with learning disabilities to take part in a broad programme of leisure and learning opportunities. The safe environment within our own 'groups' prepares our members to participate in mainstream activities in their wider communities. We work to ensure that the inclusion of people who have a learning disability is enjoyable and beneficial for everyone.

The process of transferring to a CIO was completed on 31st March 2023 and the new CIO received all assets transferred from the unincorporated charity, Gateway into the Community (charity number 1093566), on 1st April 2023. The new CIO charity registration number is 1198034.

Trustees

The Management Committee comprises a minimum of four and a maximum of twelve Trustees, who are charity trustees for the purpose of charity law. There are currently five appointed Trustees.

Membership of the Charity is open to all people with a learning disability who are resident in West Northumberland. Trustees are elected by the members at the Annual General Meeting and, if willing to stand, offer themselves for re-election each year. The officers of the Charity for the ensuing year are nominated and elected (by ballot if necessary) at every AGM.

All Trustees give their time voluntarily and receive no benefits from the Charity. No Trustee received any remuneration for services as a Trustee during the year ended 31 March 2025.

Trustee Induction and Training

A Trustee Information Pack is available to potential and new Trustees. Potential Trustees are invited to attend a Trustee meeting to find out more about the workings of the Management Committee and the governance of the Charity, after which they might feel better informed to make a decision to become a Trustee.

GATEWAY INTO THE COMMUNITY

New Trustees are introduced to the Charity, their legal obligations under charity law, the content of the governing document, the Trustees and the decision-making process, the business plan and financial performance of the charity, during an induction period soon after appointment. Trustees are also encouraged to attend appropriate training events that will support effective conduct in their role.

Organisation

The Management Committee is responsible for the overall management and control of the Charity and meets approximately six times a year for full Management Committee meetings plus the Annual General Meeting. A finance sub-committee meets more regularly and reports to the Management Committee.

The Charity is run on a day-to-day basis by the Chief Executive, Julia Ferguson, supported by two senior managers, Sharyn Castelow and Joanne Armstrong. Community Support and Sessional workers, largely part-time, are employed to provide services to the Charity's members, with support from administration and finance staff.

Related parties and relationships with other organisations

The Charity is not affiliated with any other organisation.

Remuneration Policy for key management personnel

The remuneration of the Chief Executive and senior management team is guided by the Local Government Pay Scales agreed by the National Joint Council for Local Government Services (NJC). Points on the scale for each individual are set by reference to affordability and local market conditions for the post in question. Pay is reviewed annually by the Chief Executive and the financial Trustee; the salary of the Chief Executive is reviewed by the Chair.

Risk Management

Where appropriate, policies and procedures or systems have been put in place to mitigate the risks the Charity might face. Significant external risks to funding and the nature of funding across the Community and Voluntary Sector, have led to the development of a long term strategic plan including the identification of priority activities in relation to income generation. Policies and procedures exist to ensure compliance with health and safety of all staff, volunteers and members of the Charity. This includes the provision of adequate insurance cover and risk assessment of all charitable activities. These policies and procedures are reviewed annually or more frequently, on change of circumstances, to ensure that they continue to meet the needs of the charity.

OBJECTIVES AND ACTIVITIES

The principal activity of the Charity is to support, promote and encourage the provision of facilities for recreation, learning and other leisure time opportunities, for people living in West Northumberland who have a learning disability, with the object of improving their quality of life.

GATEWAY INTO THE COMMUNITY

Gateway into the Community supports people who have learning disabilities and live in West Northumberland, to take part in a broad programme of leisure and learning opportunities.

When planning our activities for the year we have had regard to the Charity Commission's guidance on public benefit. We work to ensure that the inclusion of people who have learning disabilities is enjoyable and beneficial to everyone. We support integrated activities whenever possible.

Health and well-being is at the heart of everything we do. We meet our objectives through the delivery of our grant funded projects and activities and services. Our Gateway into Nature project, our Individual Support Service and Day Service provide opportunities for our members to develop a wide range of skills in arts and crafts, independence, independent travelling, volunteering opportunities, cooking and literacy, numeracy and money management.

Achievement and Performance

After reviewing all the opportunities our members have taken part in throughout the year has highlighted the amazing activities our members take part in. The Den has been instrumental in enabling us to develop more opportunities and also increase our capacity. One year on from having purchased the building, and already we have undergone more refurbishments and developments.

Securing the loan with NorthStar Ventures also enabled us to secure a grant with Durham Community Foundation. This loan has helped us to refurbish our Hub creating an open plan kitchen with café facilities where our members are able to host events and coffee mornings along with developing skills around hospitality, in a supportive environment. We also use this amazing space for fundraising events, parties and celebrations. It has become an invaluable place that has a multitude of uses. Sometimes our members will cook or bake and share what they have made with their friends.

We have also made huge developments in our mission to become greener as an organisation. Owning the building has enabled us to do this and we now have a Bronze accreditation with Investors in the Environment. This shows our commitment to becoming greener and reducing our carbon footprint.

We monitor how electricity is used throughout the building, our waste management, our travel emissions and support our members to use public transport wherever possible. We have installed LED lights throughout the building which are 80% more efficient and have created an Environmental Policy. This outlines our commitment to going greener, this is demonstrated in our established objectives and goals. We encourage members and staff to switch lights off when they leave a room and switch off all electrical devices when not in use. We have also reduced our paper usage and only print when necessary. Our Environmental Policy outlines our key goals which demonstrates our commitment to the environment.

We are now members of NCEL whose Solar Powered Community Buildings Project funds and installs Solar Panels onto the roofs of Community buildings. We have completed our feasibility study and are now on the waiting list for the next round of funding. As members we will buy back electricity generated at 15p/kWh. The Solar Powered Community Buildings

GATEWAY INTO THE COMMUNITY

Project will also install and maintain the Solar Panels.

Grant Funded projects and activities:

We have delivered **10** weekly groups ranging from sports, football, social groups, youth groups, gardening and performing arts. These are our grant funded activities and provided much needed support to so many vulnerable people.

Our grant funded projects and activities currently provide **127** places every week. These projects are critical to ensuring that we are able to provide in some cases vital support and weekly social contact for many of our vulnerable members.

It is vital that we are able to continue to fundraise and ensure that this strand of our work continues as 67% of members who access our weekly groups have little or no other support in their lives. Many do not meet the criteria needed to qualify for social care funding for social and health and well-being as they may not be deemed to be in crisis. However, without this weekly support and social contact they would indeed fall into crisis. We continue to be extremely committed to this area of work as this we feel this support helps many members from falling into crisis. Our flexible approach ensures that we continue to meet the individual needs of our members along with for many, providing a real lifeline. We do not operate 9am – 5pm and have often supported members through challenging times when they have had no one else to turn too.

Day Service and Individual Support:

We are currently delivering **564** hours of Individual Support every week and **31.25** days of Day Service every week. **39** members receive an Individual Support Service every week and **17** members access our Day Service every week. This is an increase from the previous year.

We currently support 9 members to access volunteering and employment opportunities throughout the week. For these members this has been a great achievement and would not have been possible had it not been for the service they receive from Gateway. We build links with local businesses to ensure that we are able to provide as many opportunities as possible. We support our members throughout their placements to ensure they succeed, and their experiences are positive.

Our earned income services are so bespoke that no 2 members have the same package. Every member's package is individual and completely designed around their individual needs.

Social Enterprise:

Our Social Enterprise continues to grow at a steady pace that does not impact the services and opportunities our member's access. It continues to enhance what we provide by providing opportunities around product development, design, production and selling a finished product. This is proving to be an amazing opportunity for our members. We have developed our facilities to include a workshop with equipment at our Gateway Garden and continue to source sustainable materials for production. We have sold our products at Hexham Christmas Fair and within our displays at the Den. Our location is ideal and

GATEWAY INTO THE COMMUNITY

generates quite a footfall from the public. Our windows are proving to be a real asset in attracting attention and our main entrance is where we display our products.

Our main best sellers are: Bird boxes £5, garden planters £10 small £15 large and kindling boxes £5. We also produce, clocks, hearts and key holders all £5 per item.

Dreams and Aspirations:

We passionately believe that everyone has the right to have dreams and aspirations and are always supporting our members to achieve their dreams. Gateway has always worked hard to ensure that our members are at the heart of everything we do. From the planning of our daily activities to the planning of our weekly groups and annual projects.

Working Together:

We are proud of our strong partnerships with other organisations, all of whom have played a vital part in opening up opportunities for our members. We currently work with NUFC Foundation, Hexham Priory School, Hexham Community Partnership, Hexham Forum Cinema, The Queens Hall and Wentworth Leisure Centre, The Salvation Army and Queen Elizabeth High School. As a close community we work closely with Natural Ability to ensure that all our members receive the best support they possibly can to flourish and be the amazing people they are.

We have a successful Well-being project that provides weekly sessions around health and well being, we run yoga, pilates and bootcamps.

We have also supported our members to take part in Reason To Disability Triathlon, this involves working with Triathletes and Wentworth Leisure Centre. This is an amazing opportunity for our members who took part.

Through these partnerships we have delivered sports groups, taken part in community events, activities and coffee mornings.

We also like to support other charity's and have held coffee mornings and events for Breast Cancer Now and Macmillan.

Funding and Support:

We are extremely grateful for all the support we receive from our funders and the local community. Grant funding and donations provide essential funding to enable us to provide opportunities for many of our members who do not receive funding elsewhere and greatly enhances the opportunities we can provide.

Organisational Development:

Our Chief Executive Julia Ferguson provides leadership for the organisation and is supported by the Senior Management Team, Jo Robinson: Development Manager, Sharyn Castelow: Day Service Manager, Louise Humble: Finance Manager and Clare Woodley: Administrator and Fundraiser. Gateway into the Community is not an overtly top-heavy organisation, with the Senior team involved in many aspects of the organisation. There are strong links and working relationships with our Community Support Staff who directly

GATEWAY INTO THE COMMUNITY

provide support to our members. This close working ensures that we are able to lead by example, provide daily support and model good practice which we feel is the most effective way to ensure the vision of the organisation is at the heart of everything we do. This is also embedded due to the fact that we are all based in the same building. The Chief Executive and the Senior Team have regular contact with members and staff and are able to support both staff and members through challenges and adapt to the changing needs of our members. We are greatly committed to staff development provide a wide range of online training opportunities for staff to ensure not only their development, but also the safety and development of our members. Bright Hr and CPD online continue to provide a wide range of training courses that meet our need. We also take up training opportunities through other means such as the voluntary sector to help us support our staff with development that will enhance the services we provide. We are also committed to ensuring our staff have opportunities for development.

We have also provided a range of training for all staff both mandatory and optional to support development and progression. This has included Safeguarding, Health and Safety, First Aid.

Volunteers

We would like to thank all our valued volunteers who provide support within our groups and activities throughout the year. Their support makes a big difference to the lives of our members and greatly enhances our projects and activities.

Future Development:

We are looking to utilise our building more in the future to help us to become even greener and reduce our carbon emissions. Through our accreditation, we have introduced a number of systems that have already helped us to achieve this. Going forward we are applying for planning to install Double Glazed UPVC windows on our first floor to help reduce our heating costs and are part of Northumberland Community Solar Panel Project. This is very exciting as it will enable us to produce sustainable electricity that we can buy back and use. Our roof is extremely well suited for this as it is flat and south facing. Our application to create a permanent accessible entrance to the building has been granted as permitted development. This means that we can go ahead and start the building. It is very important to us that this is completed as we are passionate about making the main entrance to the Den accessible for everyone, no one should have to use a side entrance or enter the building via a different entrance. Owning the building means that any improvements we make will add value providing even more stability to the Charity.

The future is very exciting.

FINANCIAL REVIEW

The charity remains grateful for the help and support given by government agencies, charitable trusts and other sources of fundraising and donations.

This review covers the 12 month period to 31st March 2025.

GATEWAY INTO THE COMMUNITY

The charity generates a significant proportion of its income from Individual Support and Day Service fees. Total income, including these fees, grants, fundraising and donations, in the year ended 31 March 2025 was £852,228 (2024: £786,002). The increase in income of £66,226 was as a result largely of increased levels of activity with higher individual support and day service income. Individual Support and Day Service fees rose significantly to £710,683 (2024: £635,297).

Grant income decreased slightly in the year to £99,931 (2024: £126,531). This income included a grant from County Durham Community Fund of £37,500, and also £26,228 from the Kellet Fund for running costs of groups supporting older members.

Total costs were £718,751 (2024: £676,407), and as a result the charity once again generated a surplus for the year of £133,477 (2024: £109,595 surplus). Payroll costs, which represent the significant part of the charity's costs, increased over the year to £548,993 (2024: £523,493) equalling 76% of total expenditure (2024: 77%).

Total funds at 31 March 2025 were £634,340, of which £507,963 was held in bank and cash balances. Of the total funds at 31 March 2025, £531,906, related to unrestricted funds (2024: £394,652). The Trustees decided to transfer on a monthly basis approximately 5% of Individual Support and Day Service income from the unrestricted general fund to a designated maintenance fund to support ongoing maintenance of the charity's premises. At 31 March 2025, this designated fund stood at £85,570 (2024: £50,014).

At the end of the period ended 31 March 2024, the charity completed the purchase for £550,000 of the freehold property at St Mary's House, Hexham, the property from which the charity operates. The acquisition was funded by a social enterprise loan of £440,000 from Northstar Ventures, with the balance funded by the Garfield Weston grant referred to above, and by the charity's own reserves.

The charity also recognises the valuable contribution made by individuals and supporters under our regular giving schemes.

Grant Making Policy

The Charity does not make grants.

Investment Policy

The charity holds no investments, other than reserve funds held in interest bearing bank deposit accounts, and as such has no formal investment policy.

Reserves Policy

The Trustees aim to have a reserve of sufficient unrestricted funds to cover three months' operating costs, plus exit charges. This figure has been identified following consideration of the main financial risks to the charity. At 31 March 2025 free unrestricted reserves held amounted to approximately 6 months' operating costs, and therefore this policy was met.

The strategy is to continue to maintain reserves through economies of scale wherever possible, suitable cost control, and seeking additional funding to meet essential expenses which underpin the provision of service to members. The Trustees regularly review the level

GATEWAY INTO THE COMMUNITY

of unrestricted reserves at Management Committee meetings with the aim of ensuring that a temporary shortfall in grant funding does not have an immediate impact on services for members. Funding is sought against individual projects to enable the charity to fulfil its aims and objectives without a disproportionately high drawdown of unrestricted reserves; the Trustees authorise a new project only when sufficient funds have been obtained.

Statement of Trustees' Responsibilities

Charity law requires the Trustees to prepare financial statements for each financial year which give a true and fair view of the state of the affairs of the charity as at the balance sheet date and of its incoming resources and application of resources, including income and expenditure, for the financial year; in preparing those financial statements, the Trustees should follow best practice and:

- select suitable accounting policies and then apply them consistently;
- make judgements and estimates that are reasonable and prudent; and
- prepare the financial statements on the going concern basis unless it is not appropriate to assume that the charity will continue on that basis.

The Trustees are responsible for maintaining proper accounting records which disclose with reasonable accuracy at any time the financial position of the charity and to enable them to ensure that the financial statements comply with the Charities Act 2011. The Trustees are also responsible for safeguarding the assets of the charity and hence for taking reasonable steps for the prevention and detection of fraud and other irregularities.

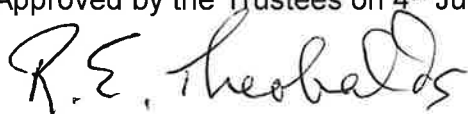
Responsibilities of the Trustees

Trustees who served during the year and up to the date of this report are set out under Legal and Administrative Information. In accordance with charity law, as the charity's Trustees, we certify that:

- so far as we are aware, there is no relevant information of which the charity's examiner is unaware; and
- as Trustees we have taken all the steps that we ought to have taken in order to make ourselves aware of any relevant accounts information and to establish that the charity's examiner is aware of that information.

This report has been prepared in accordance with the Statement of Recommended Practice: Accounting and Reporting by Charities (issued in January 2019).

Approved by the Trustees on 4th June 2025 and signed on their behalf by:



Rosemary Theobalds, Chair

**INDEPENDENT EXAMINERS REPORT ON THE UNAUDITED FINANCIAL STATEMENTS
TO THE TRUSTEES OF GATEWAY INTO THE COMMUNITY (the 'Charity').**

I report to the Charity Trustees on my examination of the accounts of the above Charity for the year ended 31 March 2025, which are set out on pages 10 to 19.

Respective and basis of report

The trustees are responsible for the preparation of the accounts in accordance with the requirements of the Charities Act 2011 (the '2011 Act').

Having satisfied myself that the accounts of the charity are not required to be audited under Part 16 of the 2006 Act and are eligible for independent examination, I report in respect of my examination of your charity's accounts as carried out under Section 145 of the Charities Act 2011. In carrying out my examination I have followed the Directions given by the Charity Commission under section 145(5)(b) of the 2011 Act.

Independent examiner's statement

Since the Charity's gross income exceeded £250,000 your examiner must be a member of a body listed in Section 145 of the 2011 Act. I confirm that I am qualified to undertake the examination because I am a member of the Institute of Chartered Accountants in England and Wales, which is one of the listed bodies.

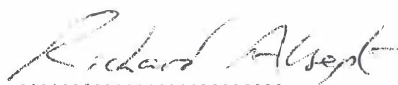
I have completed my examination. I confirm that no material matters have come to my attention in connection with the examination which gives me cause to believe that in, any material respect:

- the accounting records were not kept in accordance with section 130 of the Charities Act;

or

- the accounts did not accord with the accounting records; or
- the accounts did not comply with the applicable requirements concerning the form and content of accounts set out in the Charities (Accounts and Reports) Regulations 2008 other than any requirement that the accounts give a 'true and fair' view which is not a matter considered as part of an independent examination.

I have no concerns and have come across no matters in connection with the examination to which attention should be drawn in this report in order to enable a proper understanding of the accounts to be reached.



Richard Alsept
Chartered Accountant
16 Burlington Terrace
Cardiff
CF5 1GG

4th June 2025

STATEMENT OF FINANCIAL ACTIVITIES FOR THE PERIOD ENDED 31 March 2025

		Unrestricted Funds	Restricted Funds	Total y/e 31 March 2025	Total y/e 31 March 2024
	Note	£	£	£	£
INCOME					
Donations, Activities and Gifts	3	11,152	6,897	18,049	17,443
Grants received	3	-	99,931	99,931	126,517
Charitable activities	3	728,116	1,139	729,255	635,297
<i>Investment income:</i>					
Interest received		4,993	-	4,993	6,745
Total Income		<u>744,261</u>	<u>107,967</u>	<u>852,228</u>	<u>786,002</u>
EXPENDITURE					
Charitable activities	4	607,007	111,744	718,751	676,407
Total Expenditure		<u>607,007</u>	<u>111,744</u>	<u>718,751</u>	<u>676,407</u>
Net Income/(expenditure)		<u>137,254</u>	<u>(3,777)</u>	<u>133,477</u>	<u>109,595</u>
Transfer between funds		-	-	-	-
Net Movement in Funds		137,254	(3,777)	133,477	109,595
Funds Reconciliation: Fund balances brought forward		<u>394,652</u>	<u>106,211</u>	<u>500,863</u>	<u>391,268</u>
Fund balances carried forward		<u>531,906</u>	<u>102,434</u>	<u>634,340</u>	<u>500,863</u>

The statement of financial activities includes all gains and losses in the year / period.
All incoming resources and resources expended derive from continuing activities.

GATEWAY INTO THE COMMUNITY

BALANCE SHEET AS AT 31 March 2025

	Notes	March 2025 £	£	March 2024 £	£
FIXED ASSETS	2		550,000		550,000
CURRENT ASSETS					
Debtors	5	18,067		38,020	
Cash at bank and in hand		<u>507,963</u>		<u>367,777</u>	
		526,030		405,797	
CURRENT LIABILITIES					
Amounts falling due within one year	6	(57,435)		(45,152)	
Net Current Assets			468,595		360,645
Creditor due after one year	7		(384,255)		(409,782)
NET ASSETS			<u>634,340</u>		<u>500,863</u>
Restricted Funds		62,434		66,211	
Restricted Funds - capital		40,000		40,000	
Designated Funds		85,570		50,014	
Unrestricted General Funds		446,336		344,638	
TOTAL CHARITY FUNDS	11		<u>634,340</u>		<u>500,863</u>

These financial statements were approved by the Board of Trustees on 4th June 2025 and signed on its behalf by:



Rosemary Theobalds, Chair



Liz Holmes, Vice Chair

1 ACCOUNTING POLICIES

The principal accounting policies are summarised below. The accounting policies have been applied consistently throughout the period and in the preceding year.

a. Basis of accounting

The financial statements are prepared under the historical cost convention and in accordance with the provisions of Financial Reporting Standard 102, Section 1a Small Entities, and the Charity Statement of Recommended Practice, (Charities SORP (FRS 102) 2019), as well as the Charities Act 2011.

The charity constitutes a public benefit entity as defined by FRS 102.

b. Fund accounting

Unrestricted funds are incoming resources received or generated for charitable purposes. They are available for use at the discretion of the trustees in the furtherance of the general objectives of the charity. Unrestricted funds comprise the unrestricted general fund and the designated maintenance fund to support ongoing maintenance of the charity's leasehold premises.

Restricted funds can only be applied for a particular purpose as defined within their objects.

c. Income

All income is included in the statement of financial activities when the charity is entitled to the income, and the amount can be quantified with reasonable accuracy. The following specific policies are applied to particular categories of income:

- Income which is received by way of grants, donations and gifts to the charity is included in full in the Statement of Financial Activities upon receipt. Grants, where entitlement is not conditional on the delivery of a specific performance by the charity, are recognised when the charity becomes unconditionally entitled to the grant.
- Bank interest and other investment income is included when receivable.
- Income from charitable activities is derived from contracts and service agreements, and is accounted for as the charity earns the right to consideration by its performance.

Gift Aid receivable is included in income when there is a valid declaration from the donor.

Volunteers – the value of any volunteer help received is not included in the accounts, but is described and acknowledged in the Trustees' report.

d. Expenditure

Expenditure is recognised on an accrual basis as a liability is incurred. Expenditure includes unrecoverable VAT.

- Costs of generating funds comprise the costs associated with attracting voluntary income.
- Operation and development of the charity includes all costs incurred by the charity in the delivery of its activities and services.
- Governance costs include those costs associated with meeting the constitutional and statutory requirements of the charity and include accountancy fees.

e. Fixed assets

Fixed assets are stated at cost less accumulated depreciation. All items with a useful life of more than one year, and a cost of at least £500 are capitalised. Depreciation is provided at rates calculated to write off the cost of an asset, less its estimated residual value, over the useful economic life of that asset as follows:

Plant and Equipment	-	33% straight line
Vehicles	-	33% straight line

f. Cash and cash equivalents

Cash and cash equivalents comprise cash on hand and call deposits, and other short-term highly liquid investments that are readily convertible to a known amount of cash and are subject to an insignificant risk of change in value.

g. Trade debtors

Trade debtors are amounts due from funders for merchandise sold or services performed in the ordinary course of business. Trade debtors are recognised initially at the transaction price. They are subsequently measured at amortised cost using the effective interest method, less provision for impairment. A provision for the impairment of trade debtors is established when there is objective evidence that the company will not be able to collect all amounts due according to the original terms of the receivables.

h. Trade creditors

Trade creditors are obligations to pay for goods or services that have been acquired in the ordinary course of business from suppliers. Accounts payable are classified as current liabilities if the company does not have an unconditional right, at the end of the reporting period, to defer settlement of the creditor for at least twelve months after the reporting date. If there is an unconditional right to defer settlement for at least twelve months after the reporting date, they are presented as non-current liabilities. Trade creditors are recognised initially at the transaction price and subsequently measured at amortised cost using the effective interest method.

2. Tangible Fixed Assets

	Fixtures, Fittings & Equipment £	Freehold Property £	Total £
Cost			
As at 1 April 2024	15,686	550,000	565,686
Additions	-	-	-
As at 31 March 2025	<u>15,686</u>	<u>550,000</u>	<u>565,686</u>
Depreciation			
As at 1 April 2024	15,686	-	15,686
Charge for year	-	-	-
As at 31 March 2025	<u>15,686</u>	<u>-</u>	<u>15,686</u>
Net book value At 31 March 2025	<u>-</u>	<u>550,000</u>	<u>550,000</u>
At 31 March 2024	<u>-</u>	<u>550,000</u>	<u>550,000</u>

In March 2024 the charity completed the purchase of the freehold property at St Mary's House, St Mary's Wynd, Hexham, the property from which the charity operates.

3. Income

	Unrestricted Funds	Restricted Funds	Total y/e 31 March 2025	Total y/e 31 March 2024
Activities,	£	£	£	£
<i>Gifts and Donations</i>				
Activities	1,072	917	1,989	1,253
Gifts and Donations	10,080	892	10,972	11,683
Group fees	-	5,088	5,088	4,507
	11,152	6,897	18,049	17,443
<i>Charitable activities</i>				
<i>Grants received / receivable:</i>				
Access Reach Fund	-	-	-	26,435
Baily Thomas Charitable Fund	-	-	-	15,000
Ballinger Charitable Trust	-	-	-	1,000
Barbour Foundation	-	-	-	5,000
Community Foundation:				
County Durham	-	37,500	37,500	-
Kellett Fund	-	26,228	26,228	-
Northumberland Village Homes	-	4,992	4,992	-
Ringtons	-	-	-	5,000
Prime and Reed Grass Roots	-	-	-	6,000
D'Oyly Carte Charitable Trust	-	6,000	6,000	-
Hedley Foundation	-	960	960	-
Garfield Weston (capital)	-	-	-	40,000
Hexham Town Council	-	3,223	3,223	-
James Knott Trust	-	10,000	10,000	10,000
National Lottery Community Fund	-	-	-	17,582
Prime Fund (Sparkles)	-	5,996	5,996	-
Sport England	-	5,032	5,032	-
Other small grants received	-	-	-	500
<i>Fees and other income:</i>				
Individual support	579,666	-	579,666	517,605
Day Service	131,017	-	131,017	117,692
Other income (incl rent received)	17,433	1,139	18,572	-
	728,116	101,070	829,186	761,814
<i>Interest receivable</i>				
Bank interest receivable	4,993	-	4,993	6,745
Total	744,261	107,967	852,228	786,002

4. Expenditure

	Unrestricted Funds	Restricted Funds	Total y/e 31 March 2025	Total y/e 31 March 2024
	£	£	£	£
<i>Charitable Activities:</i>				
<i>Projects:</i>				
Activities and Events	843	2,118	2,961	2,940
Other project costs	4,841	8,303	13,144	9,301
<i>Staff Costs:</i>				
Salaries and sessional costs	459,931	49,011	508,942	485,681
Employers NIC	25,581	-	25,581	24,020
Employers Pension costs	14,470	-	14,470	13,792
<i>Other Staff Costs:</i>				
Health and Safety	3,576	280	3,856	3,825
Staff Clearance	274	-	274	419
Training and recruitment	1,488	-	1,488	1,169
Travel and expenses	24,989	1,924	26,913	25,181
<i>Property Costs:</i>				
Insurance	2,704	400	3,104	4,427
Interest on Property Loan	17,468	8,609	26,077	-
Rent	-	-	-	42,000
Room Hire	-	-	-	925
Maintenance and repairs	12,847	963	13,810	6,947
Property improvements	23,037	27,965	51,002	4,836
Fixtures and fittings	-	-	-	553
Sundry	-	(88)	(88)	-
Utilities	6,110	2,181	8,291	13,010
<i>Volunteer Costs</i>	55	-	55	61
<i>Office Costs</i>	5,429	1,238	6,667	5,720
<i>Bank Charges</i>	209	-	209	154
<i>Licences and subscriptions</i>	1,688	-	1,688	892
<i>Depreciation</i>	-	-	-	-
	605,540	102,904	708,444	653,963
<i>Governance</i>				
Professional and other fees	972	8,840	9,812	21,969
Examination fees	495	-	495	475
	1,467	8,840	10,307	22,444
Total	607,007	111,744	718,751	676,407

5. Debtors

	31 March 2025 £	31 March 2024 £
Trade Debtors	18,067	31,020
Prepayments	-	7,000
Total	<u>18,067</u>	<u>38,020</u>

6. Creditors: amounts falling due within one year

	31 March 2025 £	31 March 2024 £
PAYE and NIC	5,892	6,001
Creditors & accruals	21,325	8,933
Loan (see note 7)	30,218	30,218
Total	<u>57,435</u>	<u>45,152</u>

7. Creditors: amounts falling due after one year

	31 March 2025 £	31 March 2024 £
Loan (note below)	384,255	409,782
Total	<u>384,255</u>	<u>409,782</u>

The loan of £440,000 drawn in March 2024 relates to the purchase of the charity's freehold property. It is from Northstar Ventures (part of the North East Social Investment Fund). The loan is repayable, in monthly instalments, by December 2034. The interest rate on the loan is 6%. The loan is secured by a charge over the freehold property at St Mary's House.

8. Staff costs and numbers

During the financial period the charity had an average of 34 (2024: 37) employees and their remuneration was made up as follows:

	2025
	£
Salary and wages	508,942
National insurance costs	25,581
Employer pension costs	14,470
Total	<u>548,993</u>

No employee received emoluments of more than £60,000.

9. Analysis of net assets between funds

	Unrestricted Funds £	Designated Funds £	Restricted Funds £	Total £
Tangible Fixed Assets	510,000	-	40,000	550,000
Current Assets	378,026	85,570	62,434	526,030
Creditors	(441,690)	-	-	(441,690)
Total	<u>446,336</u>	<u>85,570</u>	<u>102,434</u>	<u>634,340</u>

10. Remuneration of management committee

Trustees received no remuneration, other than the reimbursement of expenses properly incurred in relation to attendance at meetings and charity activities.

11. Fund balances

	Balance 1 April 2024 £	Incoming Resources £	Resources Expended £	Trfs £	Balance 31 March 2025 £
Unrestricted Funds	344,638	744,261	607,007	(35,555)	446,337
Restricted Funds	66,211	107,967	111,744	-	62,434
Restricted Fund - capital	40,000	-	-	-	40,000
Designated Funds	50,014	-	-	35,555	85,569
	500,863	852,228	718,751	-	634,340

The designated fund represents a maintenance fund to be used to support ongoing maintenance of the charity's leasehold premises.

The restricted capital fund relates to a grant of £40,000 received in the year from the Garfield Weston Foundation. The grant was to be used for the purpose of funding the purchase of the charity's freehold premises.

12. Transactions with trustees and other related parties

No payments were made to Trustees or other related parties for services as a Trustee.

*Everyone Deserves to Reach Their Full
Potential*

Gateway into the Community Annual Report 2024 – 2025



Gateway into the Community
3 St Marys Wynd
Hexham
Northumberland
NE46 1LW

TEL: 01434 607653
E-mail: info@gatewayintothecommunity.co.uk

Registered Charity 1198034

Chairs Report

From time to time, Gateway into the Community puts out a little folder to describe the Project: Access into the community for people who have learning disabilities through leisure and learning opportunities. These words, though accurate, do not begin to describe GITC.

Words such as Amazing, Inspiring, Fun, Friendship, Talents galore, Integration, Eco-aware come a little closer, but you have to be around The Den, looking first at the topical, artistic displays on the windows outside, and then get a sense of “home” on the inside to really appreciate the essence and ethos behind the day to day activities of GITC. There should be more Organisations like this throughout the Country, indeed the whole world.

The Spring Newsletter, put together by Members gives a flavour of how Gateway knows how to party! Events from February this year include a Valentine's Disco with Day Service members preparing the food, Pancake Day with races with frying pans and pancakes the length of the Hub between members, support for Newcastle United who in March won their first domestic cup for 75 years, the Carabao Cup, against Liverpool United. Members dressed in Newcastle colours and sang Blaydon Races weekly to support the 'Toon'! They wore blue to work in support of Autism with fundraising, and even an Easter Bonnet competition. This event included young people from Hexham Priory School, Dilston College and Tanga, some of whom are already or will become Members in the future. These events were followed by fundraising for Breast Cancer Now and more are planned. Finally for Spring, on May 8th Members kept silence at noon, and the Choir later sang songs from WW2.

I have been writing these opening words for the Annual Report for almost 25 years, but this will be my last since I plan to stand down as Chair at the upcoming AGM. I want to continue as a Trustee since I am as devoted to all the Staff, Members, and fellow Trustees as I was all those years ago. I pay tribute to our first Project Coordinator, Fiona MacDonald, and now to CEO Julia Ferguson and her inspiring Senior Team, Sharyn and Jo, not forgetting the essential admin and financial staff, Clare and Louise.

Finally, I would like to say a big thankyou to you all for the pleasure being part of Gateway into the Community has given me all this time.

Rosemary Theobalds

Chair

Chief Executive

After reviewing all the opportunities our members have had throughout the year has highlighted the amazing activities our members take part in. The Den has been instrumental in enabling us to develop more opportunities and also increase our capacity. One year on from having purchased the building, and already we have undergone more refurbishments and developments.

Securing the loan with NorthStar Ventures also enabled us to secure a grant with Durham Community Foundation. This loan has helped us to refurbish our Hub creating an open plan kitchen with café facilities where our members are able to host events and coffee mornings along with developing skills around hospitality, in a supportive environment. We also use this amazing space for fundraising events, parties and celebrations. It has become an invaluable place that has a multitude of uses. Sometimes our members will cook or bake and share what they have made with their friends.

We have also made huge developments in our mission to become greener as an organisation. Owning the building has enabled us to do this and we now have a Bronze accreditation with Investors in the Environment. This shows our commitment to becoming greener and reducing our carbon footprint.

We monitor how electricity is used throughout the building, our waste management, our travel emissions and support our members to use public transport wherever possible. We have installed LED lights throughout the building which are 80% more efficient and have created an Environmental Policy. This outlines our commitment to going greener, this is demonstrated in our established objectives and goals. We encourage members and staff to switch lights off when they leave a room and switch off all electrical devices when not in use. We have also reduced our paper usage and only print when necessary. We are also aware of our IT.

We are now members of NCEL whose Solar Powered Community Buildings Project funds and installs Solar Panels onto the roofs of Community buildings. We have completed our feasibility study and are now on the waiting list for the next round of funding. As members we will buy back electricity generated at 15p/kh. The Solar Powered Community Buildings Project will also install and maintain the Solar Panels.

Our next project is to create an accessible entrance to the building through the main doors. It is our dream to create an entrance that is accessible for everyone and that no one should have to use the back entrance which is where the previous disabled access was. We have submitted a pre application to planning to check if a planning application needs to be submitted.

Funding and Support

We are always incredibly grateful for all the support we receive from grant funders and individual donations throughout the year. Without this support we would not be able to deliver many of our weekly social and specialist interest groups which provide valuable support to many of our members. Many of our members who attend our weekly grant funded groups do not receive any support from elsewhere which highlights even more the high level of need there is for these groups and activities.

These groups are vital in supporting some of our most marginalised members.

We would like to express our sincere gratitude for the support we have received throughout the year from both, local, regional and nationwide funders and family and friends of gateway who continue to work hard in organising events and those who give regular donations.

Tynedale Lions

Tesco

Hexham Golf Club

Hays Travel

Egger Uk Ltd

Vercellis (Ryans Brownies)

Kubrick Investment

Haltwhistle Lodge No 5090

The Grapes Pub

This year we have raised :

Regular Standing Orders: £1,496

Donations: £8,701

Family and friends fundraising: £620

Social Enterprise: £1,075

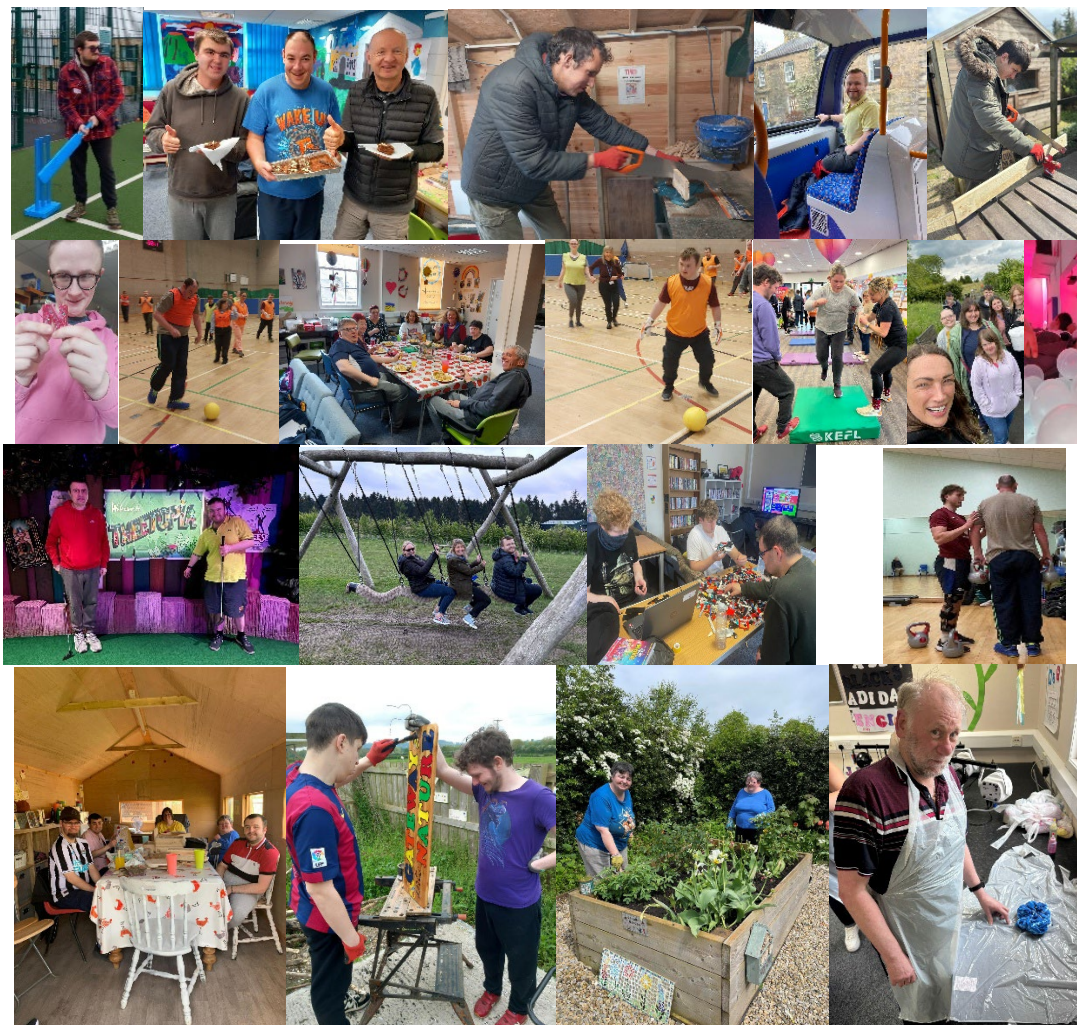
Easyfundraising: £155

Activities Throughout the Year

Again, after reflecting on the years activities, I continue to be astounded by how bespoke our services are. No two days are the same and no two members receive the same service. Our belief has always been following the dreams and wishes of our members and that everyone has the right to reach their full potential. This is why our weekly activities are so varied as we firmly believe that our members have the right to decide how they live their lives.

Since purchasing the Den we have refurbished our Hub to create an open plan kitchen with a large peninsula. This space has a multitude of uses, we have used it for fundraising events, parties, health and well being sessions, Christmas dinners and weekly social groups.

This space is incredibly versatile and also provides an opportunity for the local community to visit Gateway



Our Services, Projects, Groups and activities

Our Individual Support Service and Day Service continue to thrive and provide a safe, supportive environment where our members attend and take part in a wide range of activities. In addition to this we also provide 11 weekly grant funded groups that provide opportunities for all our members, especially those who are not in receipt of social care funding. These groups provide social interaction and support for many of our members, therefore it is vital that we continue to secure funding to deliver them. The weekly groups and activities provide **127** places every week for people to meet, socialise, develop new skills, they create a real sense of belonging within the community and the Den provides a real sense of home.

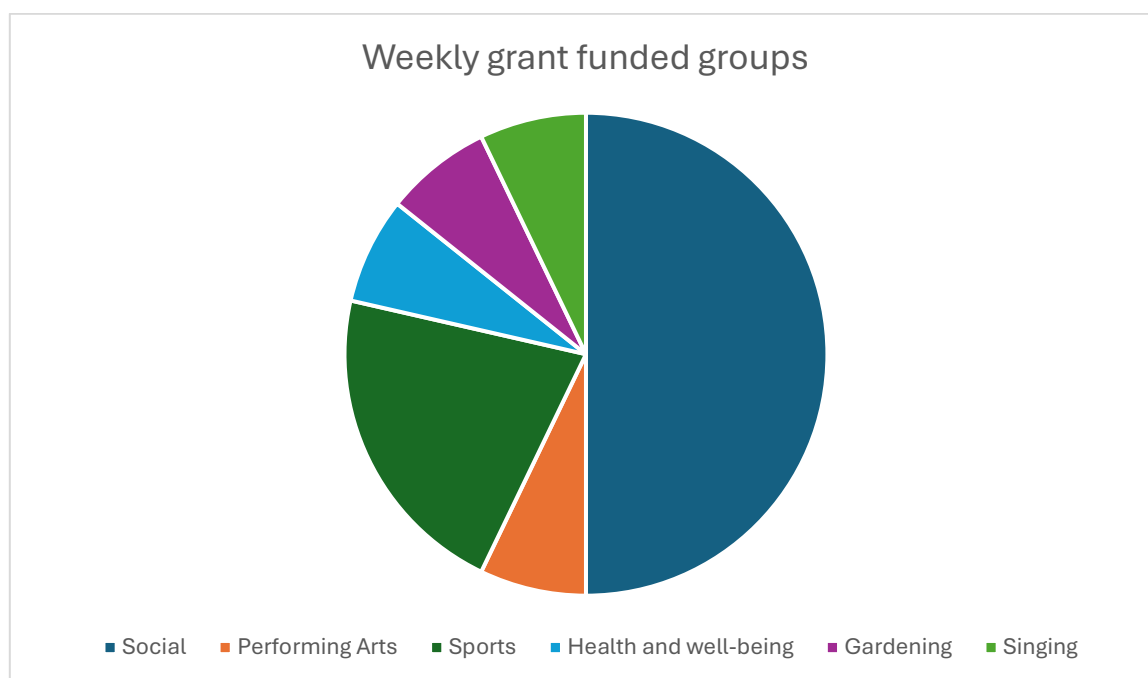
80 people attend our grant funded activities every week, with **40%** of those receiving no other support at Gateway such as earned income services. This highlights how much of a lifeline our weekly groups are. Overall we support **93** people per week with our earned income and grant funded groups and activities.

	Individual Support Service	Day Service	Groups and activities
Monday	8:00 – 6:00	9:30 – 3:30	<ul style="list-style-type: none"> Monday morning coffee morning Sports Group The Twilight Group Riddlers Youth Group Performing Arts
Tuesday	8:00 – 6:00	9:30 – 3:30	<ul style="list-style-type: none"> Newburn Sports Salvation Army Cameo Lads Group
Wednesday	8:00 – 6:00	9:30 – 3:30	<ul style="list-style-type: none"> Social afternoon Priors school Wellness Wednesdays Wed Social Group
Thursday	8:00 – 6:00	9:30 – 3:30	<ul style="list-style-type: none"> Football with NUFC Foundation Singing group Sparkles Youth Group Golden Girls Women's Group
Friday	8:00 – 6:30	9:30 – 3:30	<ul style="list-style-type: none"> Gardening Group Forum Cinema Funky Friday Social Group Disco nights every 2 months

Julia Ferguson

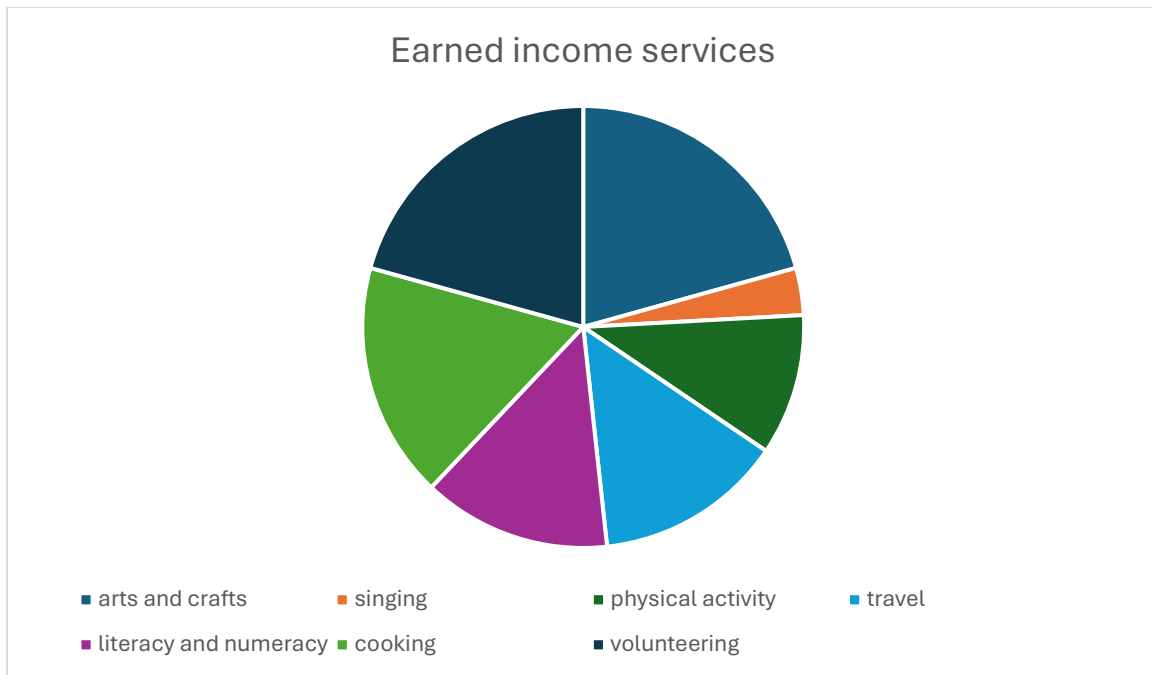
Chief Executive

Member Activities

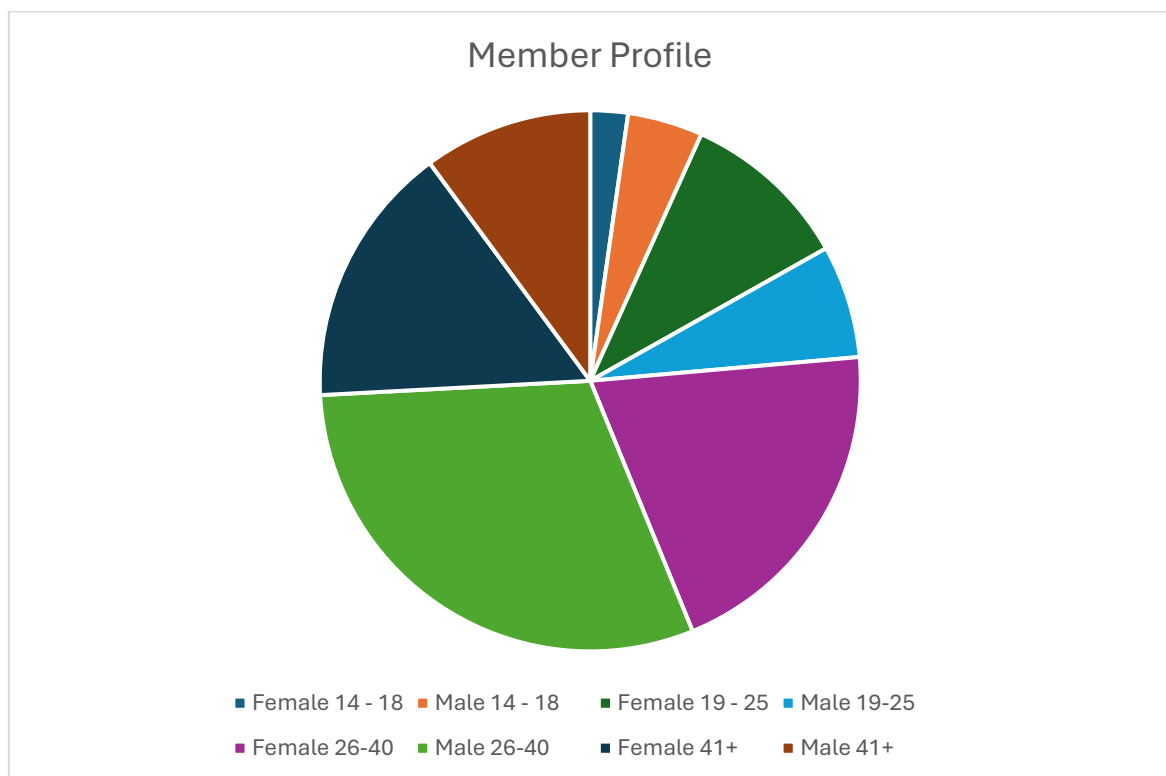


Our activities are wide ranging and cover a wide range of interests ensuring that our members have access to activities that they enjoy. The chart above displays the broad range of activities that our weekly groups provide. All these groups are grant funded and provide support to many members who do not receive support elsewhere for social activities.

Our services also provide a broad range of activities and opportunities, and no two days are the same.

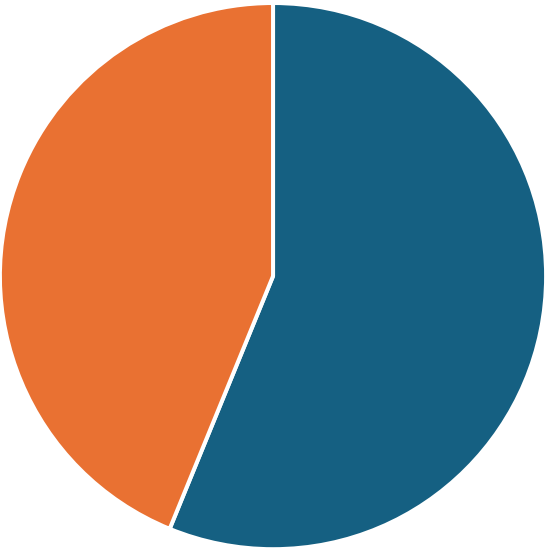


The above chart highlights the wide range of activities that our services offer.



Our member profile displays the wide range of individuals we work with. Our activities are tailored to meet the needs of all our members; we firmly believe that not one box fits all and that every deserves to reach their potential.

Members Profile



■ Male ■ Female

Individual Support Service

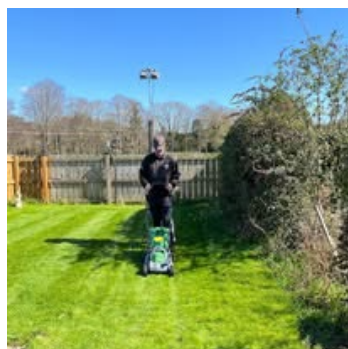
I cannot believe we have completed another year. We have had another wonderful year full of amazing activities and adventures.

We are delighted that works on the new kitchen Hub have been completed, we have purchased new crockery, cutlery, baking trays and pots and pans. In addition we have also bought a large urn for events such as community coffee mornings and the Christmas Fair. Our members use the kitchen to cook lunches, bake for coffee mornings and batch cook meals for home or at the Den. This offers our members the opportunity to gain understanding around nutrition and money management when buying ingredients and planning meals.



There have been further developments at the Gateway Garden and we are delighted that through available funding, that had been allocated to the Garden, our project is now complete. We were able to purchase the turf to make the overgrown areas accessible and we now have three grassed areas for members to sit on and just enjoy the garden. The Garden Group enjoy maintaining the garden by cutting the grass, weeding and we have been growing vegetables which we harvest and bring back to the Den for everyone to enjoy. In addition to the grass we had enough funding to build an overhead canopy next to the workshop. This also has a wood burning stove which can be enjoyed in all weather.

We are also continuing to receive a good supply of pallets from Fourstones Paper Mill. Our members are incredibly busy on Wednesdays and Fridays making items ranging from bird-houses, wooden hearts to planters and kindling.



On Friday 18th October we attended the Foscars which was hosted by the Forum Cinema. We give a special thank you to Will and Rowan for the hard work they put into making Gateway's video. Also, Doris for the amazing performances she creates with our All Stars. We are so lucky to be able to have such good relations within our local community and take part in community events and we look forward to the next Foscars event on October 24th October 2025.

Our winners were:

- Best Comedy Actor: Matthew Dennis
- Best Emotional Portrayal: Heather Robinson
- Best Support Role: Becca Killen
- Best Upcoming Professional: Stephen Castelow
- Best Comical Sketch: Rowan Simpson



On Sunday 15th September 2024 we entered a Gateway Team into the Disability Triathlon. We sold raffle tickets for the raffle which was held on the day and there were some brilliant prizes on offer. The event was hosted by Reason-to Disability Triathlon, they were incredibly generous and all the money we raised from selling tickets, sponsors and local giving went to Gateway, and we were delighted to raise over £500.

In December we once again took part in the Christmas Market and our members made some wonderful items to sell and we sold much of our stock. We provided refreshments, mice pies and shortbread and it was wonderful to be able to offer a warm place to shelter and warm up. We made £133 from donations for the refreshments and £530 in total from the Christmas Crafts, which we put towards buying equipment so that we can continue to make our wonderful items.



On Saturday 22nd March we were part of the Tyne Valley Film Festival. This year the Forum collaborated with QEHS Media Studies classes to bring films made by their students to the festival trail. It's very important to make sure that young people in Hexham are aware that the film festival is for them as well as everyone else and the Forum are trying to give them opportunities to get their films on screens for public viewing. The difference between this year and last year is that all films will be shown in all venues, so people could either choose to trail around Hexham looking for them or could just watch them all in one place, this was better for accessibility and to engage people more casually.

Our Well-being sessions are still going well and although the funding for these sessions only lasts a year, we have been incredibly lucky to be able to offer our members Yoga, Body Mobility and Boot Camp Sessions. We hope that the sessions have enabled members to continue to participate in healthy sessions such as walks with friends.



Throughout the year we have enjoyed lots of outings and trips to our local cinema. The Forum Cinema kindly let us book private showings throughout the year. This proves to be very popular and a real treat to sit wherever we want. We also buddy up with the Tynedale Centre and it's a real treat to have full use of the place.

It is wonderful to see how much we actually manage to get through over the year and we are grateful to all the people who help make this happen. We are thankful for all the support we receive from funders and volunteers to local businesses and most importantly our staff team.



Development Manager: Jo Robinson

Day Service Report

Another busy year has come and gone, and I can't believe how fast it has happened. I think we've had the most productive one yet. I really don't know where to begin. So many activities, achievements and adventures. Our members are thriving and living their best lives. Day Service continues to grow with lots of people enquiring about and wanting places. We have had several social workers visit The Den and commenting on our good practice and saying that we should be a model for other services throughout Northumberland. It would be great to think that every person with a learning disability, nationwide could have an experience like ours.

The completion of the new Hub kitchen has been a god send, this means that members are able to bake, cook and eat there, freeing up our kitchen in Day Service and giving us more opportunity to practice those all-important daily living skills. We have a group who now bake on Monday morning, to keep our coffee morning visitors in freshly baked goodies, as well as enabling us to shop, prep and cook our lunches using lots of different equipment and trying out some new and interesting recipes.



April Saw the second Easter Bonnet Competition held by The Tyndale Lions. The event was bigger than last year, and we were joined by Priory School, Dilston College and Tanga who entered their wonderful creations.

We have had several coffee morning fundraisers over the year, with money raised going to MacMillan and Priory school.

The summer was amazing, so many trips and days away, we must have clocked up a million miles. The Den felt quite deserted during the warm weather.

Football at Wentworth and Newburn have kept us fit and healthy along with lots of walks. Day Service members have embraced the "Wellbeing" sessions and are enjoying all the classes on offer.

We have worked with the Queens Hall on two projects this year, which have given us the opportunity to show off our amazing art / craft work. The first was The Annual

Lantern Parade. Gateway led the parade through the streets of Hexham and around the park. We carried our 40ft illuminated work of art. The creation took 7 days to make and nearly every member and staff member took part in the making. We had workshops late into the evenings. It contained over 1000 lights. We worked with several artists on the piece which in itself was amazing. On the night of the parade, we were joined by lots of supporters who walked with us. It took 8 members, 2 members of staff, a dad and a Grandson to carry our amazing train. Everyone worked so hard, and I think it was one of my proudest Gateway moments. Later in the year The Queens Hall did a project called "Windowful" where we created an illuminated window display with lights. It was during the winter, so it looked amazing in the dark. Again, we showed our artistic brilliance and shared it with the good people of the town, who just love to come and see our work.



Christmas was a super busy time, and again the Hub was invaluable, with lots of events and parties happening. Christmas lunch was the highlight, with an amazing meal and a visit from HRH Santa, courtesy of the Hexham Tynedale Lions, it was just magical. Our big Christmas party was very well attended and was a roaring success. We had a smaller party for the younger members again in the Hub, which was just lovely, apart from the end when people had to go home where we had a few tears as people didn't want the evening to end, always a sign of a good night. The All-stars Christmas play was phenomenal, the best performance to date. They just keep going from strength to strength with everyone's confidence shining.



In my last report I commented on how worried I was about ideas for our famous shop front window! I need not have worried as in true Gateway style we pulled it together and have had some amazing displays that have kept us busy and occupied.

Our windows continue to cheer up the town, showcasing our amazing creativity. It's great how everyone gets involved and the ideas keep coming. Here are a few of the best from the year.



January saw the launch of our now famous “Singing Group” we meet every Thursday in the Hub it started as a DS activity, however it has grown it the busiest and happiest hour of the week, with lots of the individual support members and others who don't have any have any regular funded support, enjoying the benefits of getting together with friends to have a good old sing along, it's just the best! Some

members like to do a solo which is great for building confidence and self-esteem, we also do some dancing.

We are planning on sharing our musical talents with older people's homes in Hexham.



All in all, a fantastic year with lots of fun, challenges and achievements. Here's a few pics from our year for you to enjoy.



Day Service Manager: Sharyn Castelow

Our Funders

D'Oyly Carte

Hedley Foundation

MLIS – Members Local Improvement Scheme

Point North Community Foundation

Sir James Knott Trust

Sport England's Movement Fund

Proudly supported by



SIR JAMES KNOTT TRUST



The D'Oyly Carte Charitable Trust

and through the following funds at the Community Foundation North East:

Kellett Fund

Prime Fund

Northumberland Village Homes Trust



Thank you to everyone who gave personal donations of money, time and goods and to our members who once again took part in - The Reason To – Disability Triathlon. We really appreciate all your help and support.