

# The JOYBANK

## Trustees Report for 8th February 2022 to 31st December 2022.

Jessa's JOYBANK grew from a home-based volunteer-run initiative providing toys and arts & craft packs to families using food banks in Sheffield during the Covid pandemic.

It became a registered Charitable Incorporated Organisation in February 2022 with a board of 5 trustees from different faiths and backgrounds. All trustees give their time voluntarily and receive no remuneration or other benefits. The appointed individuals all fit within the given requirements of the organisation's constitution and support the values of the charity..

### **Charitable Aims and Objectives:**

Our charity's main purposes are : to promote the central importance of creative play to children's development; to educate about sustainability and helping others; to relieve poverty by providing unwanted toys and other play resources to families who are in conditions of need, hardship or distress by reason of their social and / or economic circumstances.

The JOYBANK also provides such items to other charities and organisations working with disadvantaged children and families. We network and collaborate with a wide range of voluntary and statutory services city-wide. We also provide outreach support and advice to families about appropriate toys and how to engage with children in play.

In order to achieve the above aims, the JOYBANK advertises for donations of pre-loved and new toys. These are sorted, checked, cleaned and packaged into JOYBAGS by volunteers. These items are given out free of charge through individual referrals and via frontline workers including teachers, health visitors, social workers and other charity workers. We also provide to food banks and community organisations..

### **Ensuring our work delivers our aims:**

The trustees review the aims and objectives and consider what we are achieving against these aims and in relation to our own action plans.

All our services are provided without distinction of ethnicity, gender, sexual orientation, nationality, disability or religious beliefs. This is also a requirement we make from the other agencies and organisations with whom we work and who refer or request toys for their clients

However, we also emphasise that our purpose is the provision of support to children and families living in conditions of need, hardship or distress by reason of their social and / or financial circumstances.

### **Public Benefit:**

The trustees have complied with the duty as laid out in the Charities Act 2011 to have due regard to public benefit guidance . We regularly consult and seek feedback from the agencies we whom we work to understand whether our activities are to the public benefit and how we can improve our services to meet community needs.

For many families struggling to feed their families toys cannot be a priority. Yet creative play is essential for children's well being and healthy development. Play in the early years also has a major impact on educational achievement. Toys are the tools of play.

The recent lockdown revealed that many families live in 'toy poverty' without the play resources to entertain, let alone educate their children at home. Not only did this affect mental health but the educational 'gap' is now a chasm.

The current cost of living crisis has highlighted that since the pandemic, over 1 in 4 children in the North live in poverty. However, many more affluent families have an over abundance of unwanted toys, a lot of which end up in landfill and oceans.

The JOYBANK's mission is to Recycle, Rehome and Re-use these toys for the benefit of all

### **Operations:**

We run a community toy bank where we recycle donations make and ready for distribution.

This year the JOYBANK provided over 2000 toys to vulnerable children in the Sheffield area.

The agencies we supported included 6 primary schools and 3 special schools: social workers and

Multi Agency Support Teams; food banks, community centres, play groups and adventure playgrounds; other charities such as The Red Cross, Shelter, The Refugee Council., Sheffield Children's Hospital and Women's Aid.

In addition we worked extensively with women and families seeking asylum and living in Home Office accommodation. We regularly distributed toys, bikes and bats & ball to 40 children living with their families in hotels. We also provided board games, puzzles and craft materials as well as toiletries, prayer mats and modest clothing to women in hostels.

We funded our activities by selling some toys in our retail shop on 2 afternoons a week.

## OUR FIRST PHOTO STORY

A home-based initiative during lock-down



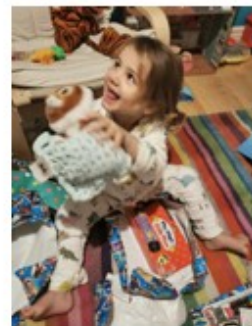
So many toys that we rented a premises



Washing Teddies



Delivering toys to doorstep



December 2021 at Jessa's JOYBANK



Sorting toys



...and books



Organising shelves.



Generous donations keep arriving



Keeping Kids Creative Project ... Making art & craft packs



200 bags ready for delivery



TEDDY TOMBOLAS for community events



Collecting bikes for families seeking asylum in hotel accommodation



Eid Picnics & Play-in-the Park



Distributing toiletries, games and prayer mat to women seeking asylum





Outdoor play equipment  
for community centres



Book boxes for schools



Craft sets for kids in the  
Children's Hospital



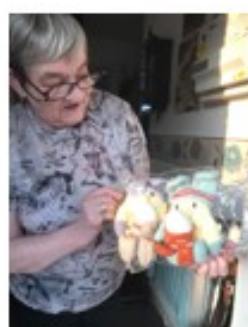
Toy bags for kids with  
special needs



We LOVE our volunteers  
& visitors



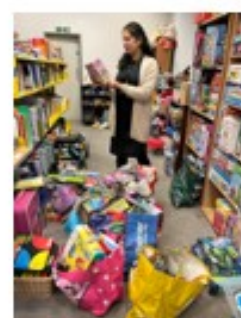
Super Sue Knits for  
Christmas



Children donate gifts



Selecting toys for  
schools



Packing JOYBAGS



Supporting community  
festivities



HAPPY HOLIDAYS ONE  
AND ALL





The JOYBANK			1197830
Receipts and payments accounts			
For the period from	08/02/2022	To	31/12/2022

Section A Receipts and payments

	Unrestricted funds	Restricted funds	Endowment funds	Total funds
	to the nearest £	to the nearest £	to the nearest £	to the nearest £
<b>A1 Receipts</b>				
-Shop Sales	£16,855.00	-	-	16,855
	- 0	-	-	-
	- 0	-	-	-
	- 0	-	-	-
	- 0	-	-	-
	- 0	-	-	-
	- 0	-	-	-
	- 0	-	-	-
<b>Sub total</b> (Gross income for AR)	16,865	N/A	N/A	16,865
<b>A2 Asset and investment sales, (see table).</b>				
	- 0	- 0	- 0	-
	- 0	- 0	- 0	-
<b>Sub total</b>	- 0	- 0	- 0	-
<b>Total receipts</b>	N/A	N/A	N/A	N/A
<b>A3 Payments</b>				
Shop Rental	7,500	-	-	7,500
Storage Rental	3,900	-	-	3,900
Heat & Light	720	-	-	720
Insurance	300	-	-	300
Printing & Publicity	200	-	-	200
Arts & Craft materials	305	-	-	305
Maintenance & Repairs	200	-	-	200
/Pacckaging for gift bags	200	-	-	200
Miscellaneous	100	-	-	100
<b>Sub total</b>	13,425	-	-	13,425
<b>A4 Asset and investment purchases, (see table)</b>				
	- 0	- 0	- 0	-
	- 0	- 0	- 0	-
<b>Sub total</b>	- 0	- 0	- 0	-
<b>Total payments</b>	N/A	- 0	- 0	N/a
<b>Net of receipts/(payments)</b>		N/A	N/A	N/A
<b>A5 Transfers between funds</b>	N/A	-	-	N/A
<b>A6 Cash funds last year end</b>	N/A	-	-	N/a
<b>Cash funds this year end</b>	3,425	N/A	N/A	N/A

Section B Statement of assets and liabilities at the end of the period

Categories	Details	Unrestricted funds	Restricted funds
		to nearest £	to nearest £
<b>B1 Cash funds</b>	Net income from shop sales	3,425	-
		-	-

		-	-
	<b>Total cash funds</b>	3,425	N/A
	(agree balances with receipts and payments account(s))	OK	OK
		<b>Unrestricted funds</b>	<b>Restricted funds</b>
	<b>Details</b>	to nearest £	to nearest £
<b>B2 Other monetary assets</b>	NONE	N/A	N/A
		-	-
		-	-
		-	-
		-	-
		-	-
	<b>Details</b>	<b>Fund to which asset belongs</b>	<b>Cost (optional)</b>
<b>B3 Investment assets</b>	NONE		-
			-
			-
			-
			-
	<b>Details</b>	<b>Fund to which asset belongs</b>	<b>Cost (optional)</b>
<b>B4 Assets retained for the charity's own use</b>	NONE		-
			-
			-
			-
			-
			-
			-
			-
			-
	<b>Details</b>	<b>Fund to which liability relates</b>	<b>Amount due (optional)</b>
<b>B5 Liabilities</b>	NONE		-
			-
			-
			-
			-
Signed by one or two trustees on behalf of all the trustees	Signature	Print Name	
	Fiona Cooper	Fiona Cooper	

CC16a
Last year
to the nearest £
-
-
-
-
-
-
-
-
N/A
- 0
- 0
N/a
-
-
-
-
-
-
-
-
-
-
- 0
- 0
N/A
-
-
3,425
Endowment funds
to nearest £
P
-



-
N/A
OK
Endowment funds
to nearest £
N/A
-
-
-
-
-
-
Current value (optional)
-
-
-
-
-
Current value (optional)
-
-
-
-
-
-
-
-
-
-
When due (optional)
Date of approval
25 /07/ 2022