

THE JOYBANK

England & Wales · Charity number 1197830

Details

Status Registered

Legal form CIO

Registered 2022-02-08

Register [View on the Charity Commission register](#)

Contact

Address 630 Abbeydale Road
Sheffield
S7 2BA

Phone 07722373212

Email joybank.enquiries@gmail.com

Activities

Objects: THE OBJECTS OF THE CIO, CARRIED OUT FOR THE PUBLIC BENEFIT IN DONCASTER, SHEFFIELD AND THE SURROUNDING AREAS, ARE: 1) THE PREVENTION OR RELIEF OF POVERTY BY THE PROVISION OF DONATED AND NEW TOYS, TO CHILDREN AND FAMILIES IN FINANCIAL NEED WHO COULD NOT OTHERWISE AFFORD THEM.2) TO ENHANCE THE EDUCATION AND DEVELOPMENT OF SOCIALLY DISADVANTAGED CHILDREN WHO HAVE EXPERIENCED TRAUMA OR VIOLENCE, THROUGH THE PROVISION OF DONATED AND NEW TOYS AND SUPPORT WITH THE DEVELOPMENT OF THERAPEUTIC RESOURCES AND CREATIVE PLAY ACTIVITIES TO SCHOOLS, COMMUNITY ORGANISATIONS AND CHARITIES.

Activities: We promote importance of creative play in children's healthy development. and recognise the joy that a simple toy can bring to a child's life. Our mission is to support families who are in financial need by recycling unwanted toys and distributing to those who need them. Through our activities we also aim to reduce waste, promote sustainability, and create a positive impact in our community.

Classification

- **How:** Provides Services, Provides Advocacy/advice/information, Acts As An Umbrella Or Resource Body
- **What:** Education/training, Disability, The Prevention Or Relief Of Poverty
- **Who:** Children/young People, Other Charities Or Voluntary Bodies, Other Defined Groups

Geography

- Area of benefit: LOCAL
- Sheffield City

Finances

Period end	Income	Expenditure	Assets	Employees
2025-01-01	£20,173	£21,825	-	-
2024-01-01	£24,612	£17,335	-	-
2023-01-01	£16,865	£10,210	-	-

Trustees

Name	Role	Appointed
Daryl Agnew	Chair	2022-02-22
Ferzana Yousaf		2022-02-22
Fiona Cooper		2022-02-22
Ghazala Hussain		2022-02-22

THE JOYBANK

England & Wales - Charity number 1197830

Accounts

2024 JOYBANK Trustees' Annual Report

For the period 1 January 2024 – 1 January 2025

Charity Number: 1997830

Charity Name: The JOYBANK

33 Edgehill Road, S7 1SP

joybank.enquiries@gmail.com



1. Reference and Administrative Details

Jessa's JOYBANK is a volunteer-led Toy Bank based in Sheffield. We became a registered Charitable Incorporated Organisation (CIO) in February 2022, following our beginnings as a home-based initiative during the Covid-19 pandemic.

2. Structure, Governance and Management

The JOYBANK is governed by a board of trustees all of whom reflect the diversity of our city and give their time voluntarily, receiving no remuneration or benefits. They meet to review progress, assess risks, and oversee strategic development. All decisions are made in accordance with our constitution. Day-to-day operations are supported by a small team of volunteers

In 2024, we further developed our operations by converting our basement storage space at a local church into a fully functioning Donation and Distribution Centre. We were also able to employ a part-time project worker to manage it..

3. Charitable Aims and Objectives

Our charity's purposes are:

- To relieve the impact of poverty on children by providing toys and play resources to families experiencing social and economic hardship.
- To promote the importance of play in children's development, learning, and well-being.
- To reduce waste by keeping unwanted toys out of landfill and educating families about sustainability and reuse.

4. Activities

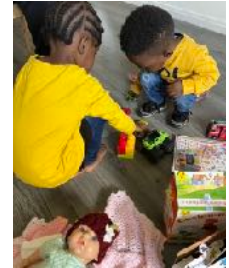
We deliver on our charitable aims through the recycling and redistribution of quality pre-loved toys to families facing hardship. In 2024:

- We collected, cleaned, and re-packaged hundreds of donated toys into carefully curated **JOYBAGS**, which were distributed **free of charge** via referrals from teachers, social workers, midwives, food banks, children's centres, community groups, and other charities.
- We prioritised providing **new toys** for children on birthdays and holidays, preserving family dignity and creating joyful celebrations.
- We supported children in difficult situations, including:
 - Children in temporary accommodation
 - Families fleeing domestic violence
 - Refugee and asylum-seeking families
 - Children with complex needs
 - Young and single parents
 - Those living in chronic poverty



Our ethos is simple: we only provide toys that would delight our own children. We aim not only to relieve financial pressure on families, but to promote dignity, well-being, and play-based learning.

- We offered outreach support, ideas for creative play and choosing age/need appropriate toys
- We collected and distributed culturally and neuro- diverse appropriate toys
- For families with an abundance of unwanted toys we provided a sustainable alternative to landfill, contributing to the circular economy while directly addressing toy poverty in our city. This also encouraged even young children to learn about kindness and helping others.



5. Public Benefit

The trustees confirm that they have complied with the duty in Section 17 of the Charities Act 2011 to have due regard to public benefit guidance published by the Charity Commission.

The JOYBANK alleviates play deprivation and poverty by ensuring every child, regardless of background, has access to toys that support healthy development and learning. We regularly consult with our partners and referral agencies to assess need, improve delivery, and ensure that our work remains relevant and impactful.

6. The Need

In Sheffield and across the North, **over 1 in 3 children** now live in poverty — significantly above the national average. Many of these children have no books or toys at home. Meanwhile, 1 in 4 families throw away good quality toys that end up in landfill.

Research shows:

- 1 in 4 children leave primary school without meeting the expected reading standard
- These children are six times more likely to drop out of education
- Play is not optional, it is essential for all aspects of development & learning



7. Our Story

The JOYBANK began as a response from a group of local mothers concerned about increasing youth violence and the lack of safe, stimulating play opportunities at home. During lockdown, we distributed art & craft packs city-wide — and soon realised the depth of unmet need.

We advertised for unwanted toys and were overwhelmed by the response. Requests came flooding in. It became clear that many families were living in 'toy poverty' — unable to afford basic play resources for their children.

In 2022, we became a registered charity. Since then, we have transitioned from a hand-to-mouth initiative to a growing, sustainable community service with a referral-based distribution model, a physical space, and a city-wide partnership network.

8. Legacy and Inspiration

Jessa's JOYBANK is dedicated to the memory of Jessica, the daughter of our founder, who died following a double lung transplant. Jessica lived with joy, dancing through life's challenges even while using oxygen and a wheelchair. This project is her legacy — a tribute to joy, resilience, and love.



9. Partnerships and Referrals

We worked in partnership with:

- Other charities & community organisations
- Schools and nurseries
- Social services
- Health visitors and midwives
- Food banks
- Women's refuges
- Asylum and refugee support groups

Referrals were triaged and tailored to ensure every family receives toys suitable to their child's age, interests, and needs.

10. Empowering Frontline Work

Health visitors, family support workers, schools and early years practitioners frequently told us that JOYBANK made their work easier and more meaningful. Our ability to provide high-quality, relevant resources – with dignity and care – made a tangible difference in family homes.



“Toys really helped to support interaction with family members and the little one, who immediately encouraged parents to play with him. On subsequent visits, toys were seen again and were obviously well used and enjoyed.”

11. Tackling Toy Poverty Sustainably



While many households throw away high-quality toys, others have none. Our model addresses both sides of this injustice, ensuring that no child goes without

Over 90% of our toys are preloved — high-quality donations saved from landfill and re-homed with purpose. JOYBANK promotes a circular economy of play: reducing waste, increasing joy, and inspiring community involvement in sustainability and generosity.

12. Inclusive and Dignity-Based

We treat toys not as charity, but as a right — essential tools for development, bonding, confidence and creativity. Every child deserves the right of play. Every parent deserves the dignity of providing play resources for their children.

13. Financial Review

This year we managed our funding carefully, with most of our budget going directly into core activities. We are grateful for grant support and local fundraising, and continue to explore sustainable income strategies.

In the financial year 2024 JOYBANK raised £24,500 from donations, grants, and small-scale sales. Our core expenditure included operational costs including storage, cleaning supplies, and outreach. All financial activity complies with our obligations as a registered CIO.

14. Looking Ahead

In 2025 we aim to:

- Develop a city-wide awareness campaign about toy poverty and play deprivation
- Expand our Donation & Distribution Centre space and hours
- Train new volunteers and collaborate with more referral partners
- Establish further satellite toy libraries and toy banks in other parts of Sheffield and region
- Build our core funding base to ensure long-term stability
- Secure larger premises for sorting, storage and outreach.
- Expand our targeted support for children with additional needs.
- Deepen our partnerships with schools and healthcare providers.
- Develop our volunteer base and community fundraising efforts.

We also want to share our initiative more widely as a **replicable approach** to tackling toy poverty, play deprivation and sustainability challenges elsewhere in the UK.



🌟 Highlights 2024 :Bringing Joy through Toys: Tackling Toy Poverty: Playing for a Change

This year, Jessa’s JoyBank continued to deliver a tangible impact across Sheffield, and region, providing free, high-quality toys to children and families in need, promoting creative play, reducing toy poverty, and advancing environmental sustainability by rescuing and redistributing hundreds of donated toys.

We supported over 500 families, strengthened ties with local schools, hosted inclusive play days, and welcomed dozens of new volunteers. JOYBANK’s reach grew through social media and word-of-mouth, and the quality of our donations remained strong throughout.

In 2024, JOYBANK’s impact stretched far beyond simply handing out toys. We empowered families, supported frontline workers, lifted the burden on parents facing crisis, and sparked joy, curiosity and connection for children of all backgrounds. Our vibrant toy bank is more than just a room filled with toys – it’s a welcoming and inclusive community space Every item is carefully chosen for its creative & educational value and ability to bring joy.

“My kids have complex needs. Until I found the Joybank, I didn’t know what toys to get them. They love going there and always find something they enjoy.”



Participation in community events, school fairs & festivals expanded our ability to meet our neighbours and promote inclusive, quality play.



We established toy libraries and toy stations for other community organisations which enabled us to reach more children and families. Support from generous business donors meant we could give new toys for birthdays and special events. Regular Big Book Giveaways supported school literacy programmes by providing free books to many children who'd never owned one.



As always, Christmas was busy, packing and distributing JOYBAGS. This year we also sent toys to a rural school in Nigeria via our new friends at Utopia Theatre.



Voices from Frontline Workers & Distribution Partners



Health visitors, family support workers, schools and early years practitioners frequently told us that JOYBANK made their work easier and more meaningful. Our ability to provide high-quality, relevant resources made a tangible difference in family homes.



“Pure joy from child and parent when I gave them the toys to keep. As a worker, the JOYBANK is such an important service. You select toys with the family in mind and ensure they are great quality and age appropriate. There is no other service like this.”

“Toys really helped to support interaction with family members and the little one, who immediately encouraged parents to play with him. On subsequent visits, toys were seen again and were obviously well used and enjoyed.”

“The family now have quality toys to enjoy and spend time together. It was vital to be able to gift these toys to support learning and development at home and encourage bonding and attachment between father and son.”

“The costumes for World Book Day had a big impact. No child had to come to school without an outfit. Parents were grateful their children could feel included, not ashamed.”

“Many of our children have never owned a book. We’re trying to promote a love of reading—so we were thrilled.”

“The children were over the moon... An increase in quality toys will certainly help the family environment.”



The Numbers Behind the Joy

- **1000 + children** supported across the year
- **3,000 + toys rehomed**, diverted from landfill and given new life
- **35 schools, local organisations & statutory services supported**
- **12 events** in neighbourhoods across Sheffield

THANK YOU! The JOYBANK not exist without the kindness and generosity of all the supporters, volunteers, donors and partners who share our vision and values. Together we make a difference.

Declaration

The trustees declare that they have approved this report.

Signed on behalf of the trustees by:

Daryl Agnew , Chair of Trustees

Date: 16.07.2025



Charity Name	No (if any)
The Joybank	1197830

Receipts and payments accounts

For the period from	Period start date	To	Period end date
	1.1.2024		1.1.2025

Section A Receipts and payments

	Unrestricted funds	Restricted funds	Endowment funds	Total funds
	to the nearest £	to the nearest £	to the nearest £	to the nearest £
A1 Receipts				
shop sales	17,427	-	-	17,427
TKMaxx Donation	500	-	-	500
Nether Edge Community Fund	600	-	-	600
Stripe	963	-	-	963
Gripple	500	-	-	500
Gripple	126	-	-	126
Gripple	39	-	-	39
Gripple	19	-	-	19
Sub total(Gross income for AR)	20,174	-	-	20,174
A2 Asset and investment sales, (see table).				
	- 0	- 0	- 0	-
	- 0	- 0	- 0	-
Sub total	- 0	- 0	- 0	-
Total receipts	20,174	- 0	- 0	20,174
A3 Payments				
Shop rental	7,425	-	-	7,425
Storage costs - Highfield Church	4,480	-	-	4,480
Insurance & Utilities	77	-	-	77
Wages	7,923	-	-	7,923
Toy purchase InKind	1,522	-	-	1,522
Stationery/packaging	36	-	-	36
Printing/marketing	327	-	-	327
Premises maintenance & fittings	-	-	-	-
Miscellaneous	-	-	-	-
Sub total	21,790	-	-	21,790
A4 Asset and investment purchases, (see table)				
	- 0	- 0	- 0	-
	- 0	- 0	- 0	-
Sub total	- 0	- 0	- 0	-
Total payments	21,790	- 0	- 0	21,790
Net of receipts/(payments)	- 1,617	-	-	- 1,617
A5 Transfers between funds	- 0	-	-	-
A6 Cash funds last year end	- 0	-	-	-
Cash funds this year end	- 1,617	-	-	- 1,617

Section B Statement of assets and liabilities at the end of the period

Categories	Details	Unrestricted funds	Restricted funds
		to nearest £	to nearest £
B1 Cash funds		7,278	-
		-	-

		-	-
	Total cash funds	7,278	-
	(agree balances with receipts and payments account(s))	Agreement Error	OK
		Unrestricted funds	Restricted funds
	Details	to nearest £	to nearest £
B2 Other monetary assets		-	-
		-	-
		-	-
		-	-
		-	-
		-	-
		-	-
	Details	Fund to which asset belongs	Cost (optional)
B3 Investment assets			-
			-
			-
			-
			-
			-
	Details	Fund to which asset belongs	Cost (optional)
B4 Assets retained for the charity's own use			-
			-
			-
			-
			-
			-
			-
			-
			-
	Details	Fund to which liability relates	Amount due (optional)
B5 Liabilities			-
			-
			-
			-
			-
Signed by one or two trustees on behalf of all the trustees	Signature	Print Name	
		Fiona Cooper	
		Daryl Agnew	

THE JOYBANK

England & Wales - Charity number 1197830

Accounts

The JOYBANK

Trustees Report for 1.1.2023 - 1 . 1. 2024

Jessa's JOYBANK developed from a home-based initiative providing toys and craft packs to families using food banks in Sheffield during the Covid pandemic.

We became a registered Charitable Incorporated Organisation in February 2022 with a board of 5 trustees from different faiths and backgrounds. All trustees give their time voluntarily and receive no remuneration or other benefits.



Charitable Aims and Objectives:

Our charity's main purposes are :

- to promote the central importance of creative play to children's development
- to educate about sustainability and helping others
- to relieve poverty by providing toys to families who are in conditions of need, hardship or distress by reason of their social and / or economic circumstances.

What We Do



We are a volunteer- run Toy Bank. In order to achieve the above aims, we collect donations of unwanted toys which are sorted, checked, cleaned and packaged into JOYBAGS. These are given out free of charge through individual referrals and via frontline workers supporting children and families including teachers, health visitors, social workers etc We also provide to food banks, other charities and community organisations supporting disadvantaged children.

We network and collaborate with a wide range of voluntary and statutory services city-wide. We also provide outreach support and advice to families about appropriate toys and how to engage with children in play.

Ensuring our work delivers our aims:

The trustees review the aims and objectives and consider what we are achieving against these aims and in relation to our own action plans.

All our services are provided without distinction of ethnicity, gender, sexual orientation, nationality, disability or faiths. This is also a requirement we make from the other agencies and organisations with whom we work who request toys.

However, we also emphasise that our purpose is the provision of support to disadvantaged children.

Public Benefit:

The trustees have complied with the duty as laid out in the Charities Act 2011 to have due regard to public benefit guidance . We regularly consult and seek feedback from the agencies we work with to understand whether our activities are to the public benefit and how we can improve our services to meet community needs.

For many families struggling to feed their families toys cannot be a priority. Yet creative play is essential for children's well being and healthy development. Play in the early years also has a major impact on educational achievement. Toys are the tools of play.

Lockdown revealed the many families live in 'toy poverty' without the play resources to entertain, let alone educate their children at home. This affected the mental health of both children and parents. The educational opportunity 'gap' is now a chasm!

The current cost of living crisis highlights that since the pandemic, over 1 in 4 children in the North still live in extremes

poverty. Meanwhile, more affluent families often have an overabundance of good quality pre-loved toys which often end up in landfill and oceans.

The JOYBANK's mission is to Recycle, Redistribute and Re-use these toys for the benefit of all

Operations:

We run a community toy bank where we recycle donations make and ready for distribution.

We support a wide range of children and families in this manner including children living in difficult situations, looked after children, families who are struggling financially, young parents, children with complex needs, and homeless families. These children and families are referred to us for support by teachers, healthcare workers and family and community workers at organisations including schools, hospitals, local authorities, migrant, refugee and women's refuge centres, community centres and other local charities.

This year the JOYBANK provided over 2000 toys to vulnerable children in the Sheffield area.

The agencies we supported included 6 primary schools and 3 special schools: social workers; Multi Agency Support Teams; food banks, community centres, play groups; adventure playgrounds; other charities such as The Red Cross, Shelter , The Refugee Council., Sheffield Children's Hospital and Women's Aid.

In addition we worked extensively with women and families seeking asylum and living in Home Office accommodation. We regularly distributed toys, bikes and outdoor play resources to children living in hotels. We also provided board games, puzzles and craft materials as well as toiletries, prayer mats and modest clothing to women in hostels.

We fund our activities by selling some toys in our retail shop on 2 afternoons a week.

HIGHLIGHTS



Following our 2nd busy Christmas when we distributed 500 JOYBAGS of gifts our financial year began with a huge tidy-up. We were also surprised that so many toys continued to arrive as families

donated unwanted presents. We were grateful to the many families who brought their children to help us unpack

Since we try to provide new toys for birthdays, in January we also visited the International Toy Fair at Olympia and spoke about our work and the importance keeping toys out of landfill and oceans. We were excited to hear about how many companies are also concerned about sustainability using recycled plastic. A week later, we were delighted to receive a large delivery of toys from Geomag, and have been receiving surplus stockroom other manufacturers throughout the year.



This meant that we had to increase and reorganise the storage space we rent in Highfield Trinity Methodist Church. We couldn't have done this without the help

of teams of workers from local companies who sent teams of workers who volunteered their 'charity days' to support us. Gripple erected new shelving...and gave us a generous donation. The Home Office and a local bank helped us sort and organise. Local families also came with their children to help us unpack.



In Spring we were once again provided gifts community Eid celebrations. We also continued to supply toys to children and families seeking asylum living in hotels, and games and crafts to women in home office hostels.

As the demand for toys continued to grow enormously during the cost of living crisis we struggled to deliver all the toys personally to homes. So throughout the year we continued to actively developed our network of relationships with other groups and organisations supporting children and families in need. This enabled us to create a referral system for teachers, community workers and multi-agency family social workers to make referrals & make sure the toys went directly into the hand of children in need.

We have also been thrilled that our community work is beginning to have an impact in local schools. Many individual children bring their unwanted toys to the JOYBANK. Some have even requested that their birdie party guests give them a present wrapped for another child. Some schools have discussed recycling and sustainability with their classes, and have then held pre-loved toys drives. All of this enables even young children not only begin to understand about social inequality and poverty, but also be able to do something to help others.



Throughout the year our shop has become a huge success.....



Growing numbers of local children & families now visit us to buy pre-loved toys for presents . Some seek help and advice about appropriate toys for different age-groups and special needs. Many also come to play, which provides parents with an opportunity to learn about what their own kids enjoy as well as meet and chat with others In many ways the JOYBANK is becoming a new community hub that promotes social cohesion conversation and conviviality. This year we have begun to use the phrase ‘ Help the Planet, Help Your Pocket, Help a Child in Need’



This year, grants from the South Yorkshire Cost of Living Fund and the National lottery helped us sustain and develop our activities and employ a part-time project worker. We are a volunteer led and run charity and until this grant were entirely self-funded. Obviously, the cost of living crisis has also affected us, as our rents and overheads increased significantly.



A huge boost to our morale was being able to afford to paint the front of the JOYBANK, print new leaflets and purchase a banner to take with us to community events,



Throughout the summer we promoted 'A SUMMER OF PLAY'. We ran Teddy Tombolas in schools and community groups and provided toys to many local holiday play schemes

At the beginning of the September, we continued our 'Keep Kids Reading' project. We distributed loads of books to schools both for classroom libraries and to give to the many children who have never had a book of their own.



Toy Libraries became a new project for us and we trialled our first one in a local nursery. We plan to develop this initiative in the coming year



We also continued to work with Local Authority agencies, providing toys for launch new family hubs, brick clubs and lego therapy and Children in Care events



In December we ran a stall in local community market where we were the nominated charity,

Our main activity at the end of the year was packing JOYBAGS for families who could not afford to buy gifts. We do not wrap them so parents and carers can give presents according to their own holiday traditions



We try to include a new toy for every child in a family along with pre-loved books, puzzles, games and soft toys.....all of which are laundered and thoroughly checked. We couldn't do this without the support of toy companies. This year we were particularly thrilled to receive £1000 of vouchers to spend on new Lego. We also purchased many toys from the fabulous In Kind Direct which provides amazing and essential support, particularly to small charities like us. We also provided toys for 'Father Christmas' at local community celebrations





CHARITY COMMISSION
FOR ENGLAND AND WALES

Charity Name The Joybank	No (if any) 1197830
-----------------------------	------------------------

Receipts and payments accounts

CC16a

For the period from	Period start date 1.1.23	To	Period end date 1.1.2024
------------------------	-----------------------------	----	-----------------------------

Section A Receipts and payments

	Unrestricted funds to the nearest £	Restricted funds to the nearest £	Endowment funds to the nearest £	Total funds to the nearest £	Last year to the nearest £
A1 Receipts					
shop sales	6,548	-	-	6,548	-
Gripple	500	-	-	500	-
Rotary Club	300	-	-	300	-
South Yorkshire Community Fund	7,500	-	-	7,500	-
National Lottery Community Fund	-	9,764	-	9,764	-
	-	-	-	-	-
	-	-	-	-	-
	-	-	-	-	-
Sub total (Gross income for AR)	14,848	9,764	-	24,612	-
A2 Asset and investment sales, (see table).					
	-	-	-	-	-
	-	-	-	-	-
Sub total	-	-	-	-	-
Total receipts	14,848	9,764	-	24,612	-
A3 Payments					
Shop rental	7,600	-	-	7,600	-
Storage costs - Highfield Church	4,500	-	-	4,500	-
Insurance & Utilities	279	-	-	279	-
Wages	572	-	-	572	-
Toy purchase InKind	3,069	-	-	3,069	-
Stationery/packaging	143	-	-	143	-
Printing/marketing	627	-	-	627	-
Premises maintenance & fittings	371	-	-	371	-
Miscellaneous	174	-	-	174	-
Sub total	17,335	-	-	17,335	-
A4 Asset and investment purchases, (see table)					
	-	-	-	-	-
	-	-	-	-	-
Sub total	-	-	-	-	-
Total payments	17,335	-	-	17,335	-
Net of receipts/(payments)	- 2,487	9,764	-	7,278	-
A5 Transfers between funds	-	-	-	-	-
A6 Cash funds last year end	-	-	-	-	-
Cash funds this year end	- 2,487	9,764	-	7,278	-

Section B Statement of assets and liabilities at the end of the period

Categories	Details	Unrestricted funds to nearest £	Restricted funds to nearest £	Endowment funds to nearest £
B1 Cash funds		7,278	-	-
		-	-	-
		-	-	-
	Total cash funds	7,278	-	-
	(agree balances with receipts and payments account(s))	Agreement Error	Agreement Error	OK
B2 Other monetary assets	Details	Unrestricted funds to nearest £	Restricted funds to nearest £	Endowment funds to nearest £
		-	-	-
		-	-	-
		-	-	-
		-	-	-
		-	-	-
		-	-	-
B3 Investment assets	Details	Fund to which asset belongs	Cost (optional)	Current value (optional)
			-	-
			-	-
			-	-
			-	-
B4 Assets retained for the charity's own use	Details	Fund to which asset belongs	Cost (optional)	Current value (optional)
			-	-
			-	-
			-	-
			-	-
			-	-
			-	-
			-	-
B5 Liabilities	Details	Fund to which liability relates	Amount due (optional)	When due (optional)
			-	
			-	
			-	
			-	
Signed by one or two trustees on behalf of all the trustees	Signature	Print Name	Date of approval	
		Fiona Cooper	5.11.2024	
		Daryl Agnew	5.11.2024	

THE JOYBANK

England & Wales - Charity number 1197830

Accounts

The JOYBANK

Trustees Report for 8th February 2022 to 31st December 2022.

Jessa's JOYBANK grew from a home-based volunteer-run initiative providing toys and arts & craft packs to families using food banks in Sheffield during the Covid pandemic.

It became a registered Charitable Incorporated Organisation in February 2022 with a board of 5 trustees from different faiths and backgrounds. All trustees give their time voluntarily and receive no remuneration or other benefits. The appointed individuals all fit within the given requirements of the organisation's constitution and support the values of the charity..

Charitable Aims and Objectives:

Our charity's main purposes are : to promote the central importance of creative play to children's development; to educate about sustainability and helping others; to relieve poverty by providing unwanted toys and other play resources to families who are in conditions of need, hardship or distress by reason of their social and / or economic circumstances.

The JOYBANK also provides such items to other charities and organisations working with disadvantaged children and families. We network and collaborate with a wide range of voluntary and statutory services city-wide. We also provide outreach support and advice to families about appropriate toys and how to engage with children in play.

In order to achieve the above aims, the JOYBANK advertises for donations of pre-loved and new toys. These are sorted, checked, cleaned and packaged into JOYBAGS by volunteers. These items are given out free of charge through individual referrals and via frontline workers including teachers, health visitors, social workers and other charity workers. We also provide to food banks and community organisations..

Ensuring our work delivers our aims:

The trustees review the aims and objectives and consider what we are achieving against these aims and in relation to our own action plans.

All our services are provided without distinction of ethnicity, gender, sexual orientation, nationality, disability or religious beliefs. This is also a requirement we make from the other agencies and organisations with whom we work and who refer or request toys for their clients

However, we also emphasise that our purpose is the provision of support to children and families living in conditions of need, hardship or distress by reason of their social and / or financial circumstances.

Public Benefit:

The trustees have complied with the duty as laid out in the Charities Act 2011 to have due regard to public benefit guidance . We regularly consult and seek feedback from the agencies we whom we work to understand whether our activities are to the public benefit and how we can improve our services to meet community needs.

For many families struggling to feed their families toys cannot be a priority. Yet creative play is essential for children's well being and healthy development. Play in the early years also has a major impact on educational achievement. Toys are the tools of play.

The recent lockdown revealed that many families live in 'toy poverty' without the play resources to entertain, let alone educate their children at home. Not only did this affect mental health but the educational 'gap' is now a chasm.

The current cost of living crisis has highlighted that since the pandemic, over 1 in 4 children in the North live in poverty. However, many more affluent families have an over abundance of unwanted toys, a lot of which end up in landfill and oceans.

The JOYBANK's mission is to Recycle, Rehome and Re-use these toys for the benefit of all

Operations:

We run a community toy bank where we recycle donations make and ready for distribution.

This year the JOYBANK provided over 2000 toys to vulnerable children in the Sheffield area. The agencies we supported included 6 primary schools and 3 special schools: social workers and Multi Agency Support Teams; food banks, community centres, play groups and adventure playgrounds; other charities such as The Red Cross, Shelter, The Refugee Council., Sheffield Children's Hospital and Women's Aid.

In addition we worked extensively with women and families seeking asylum and living in Home Office accommodation. We regularly distributed toys, bikes and bats & ball to 40 children living with their families in hotels. We also provided board games, puzzles and craft materials as well as toiletries, prayer mats and modest clothing to women in hostels.

We funded our activities by selling some toys in our retail shop on 2 afternoons a week.

OUR FIRST PHOTO STORY

A home-based initiative during lock-down



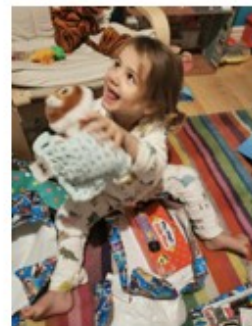
So many toys that we rented a premises



Washing Teddies



Delivering toys to doorstep



December 2021 at Jessa's JOYBANK



Sorting toys



...and books



Organising shelves.



Generous donations keep arriving



Keeping Kids Creative Project ... Making art & craft packs



200 bags ready for delivery



TEDDY TOMBOLAS for community events



Collecting bikes for families seeking asylum in hotel accommodation



Eid Picnics & Play-in-the Park



Distributing toiletries, games and prayer mat to women seeking asylum



Outdoor play equipment for community centres



Book boxes for schools



Craft sets for kids in the Children's Hospital



Toy bags for kids with special needs



We LOVE our volunteers & visitors



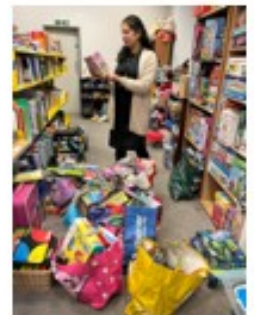
Super Sue Knits for Christmas



Children donate gifts



Selecting toys for schools



Packing JOYBAGS



Supporting community festivities



HAPPY HOLIDAYS ONE AND ALL





Receipts and payments accounts

For the period
from

08/02/2022

To

31/12/2022

Section A Receipts and payments

	Unrestricted funds	Restricted funds	Endowment funds	Total funds
	to the nearest £	to the nearest £	to the nearest £	to the nearest £
A1 Receipts				
-Shop Sales	£16,855.00	-	-	16,855
	- 0	-	-	-
	- 0	-	-	-
	- 0	-	-	-
	- 0	-	-	-
	- 0	-	-	-
	- 0	-	-	-
	- 0	-	-	-
Sub total(Gross income for AR)	16,865	N/A	N/A	16,865
A2 Asset and investment sales, (see table).				
	- 0	- 0	- 0	-
	- 0	- 0	- 0	-
Sub total	- 0	- 0	- 0	-
Total receipts	N/A	N/A	N/A	N/A
A3 Payments				
Shop Rental	7,500	-	-	7,500
Storage Rental	3,900	-	-	3,900
Heat & Light	720	-	-	720
Insurance	300	-	-	300
Printing & Publicity	200	-	-	200
Arts & Craft materials	305	-	-	305
Maintenance & Repairs	200	-	-	200
/Pacckaging for gift bags	200	-	-	200
Miscellaneous	100	-	-	100
Sub total	13,425	-	-	13,425
A4 Asset and investment purchases, (see table)				
	- 0	- 0	- 0	-
	- 0	- 0	- 0	-
Sub total	- 0	- 0	- 0	-
Total payments	N/A	- 0	- 0	N/a
Net of receipts/(payments)		N/A	N/A	N/A
A5 Transfers between funds	N/A	-	-	N/A
A6 Cash funds last year end	N/A	-	-	N/a
Cash funds this year end	3,425	N/A	N/A	N/A

Section B Statement of assets and liabilities at the end of the period

Categories	Details	Unrestricted funds	Restricted funds
		to nearest £	to nearest £
B1 Cash funds	Net income from shop sales	3,425	-
		-	-

CC16a
Last year
to the nearest £
-
-
-
-
-
-
-
-
N/A
- 0
- 0
N/a
-
-
-
-
-
-
-
-
-
-
- 0
- 0
N/A
-
-
3,425
Endowment funds
to nearest £
P
-

-
N/A
OK
Endowment funds
to nearest £
N/A
-
-
-
-
-
-
Current value (optional)
-
-
-
-
-
Current value (optional)
-
-
-
-
-
-
-
-
-
When due (optional)
Date of approval
25 /07/ 2022