

BROXBOURNE BIG LOCAL

England & Wales · Charity number 1197644

Details

Status Registered

Legal form Charitable company

Company number [12055143](#)

Registered 2022-01-24

Register [View on the Charity Commission register](#)

Contact

Address Wormley Community Centre
Fairfield Drive
Broxbourne
Hertfordshire
EN10 6DX

Phone 01992442891

Email info@broxbournebiglocal.org.uk

Activities

Objects: THE OBJECTS OF THE CHARITY ARE:-1.1 TO DEVELOP THE CAPACITY AND SKILLS OF THE MEMBERS OF THE SOCIALLY AND ECONOMICALLY DISADVANTAGED COMMUNITY OF BROXBOURNE IN SUCH A WAY THAT THEY ARE BETTER ABLE TO IDENTIFY, AND HELP MEET, THEIR NEEDS AND TO PARTICIPATE MORE FULLY IN SOCIETY.1.2 TO PROMOTE FOR THE BENEFIT OF THE INHABITANTS OF BROXBOURNE AND THE SURROUNDING AREA THE PROVISION OF COMMUNITY FACILITIES FOR RECREATION OR OTHER LEISURE TIME OCCUPATION OF INDIVIDUALS WHO HAVE NEED OF SUCH FACILITIES BY REASON OF THEIR YOUTH, AGE, INFIRMITY OR DISABLEMENT, FINANCIAL HARDSHIP OR SOCIAL AND ECONOMIC CIRCUMSTANCES OR FOR THE PUBLIC AT LARGE BY ASSOCIATING TOGETHER WITH THE SAID INHABITANTS, AND THE STATUTORY AUTHORITIES, VOLUNTARY AND OTHER ORGANISATIONS IN THE INTERESTS OF SOCIAL WELFARE AND WITH THE OBJECT OF IMPROVING THE CONDITION OF LIFE OF THE SAID INHABITANTS.

Activities: We are a local charity that came to be in 2021, Wormley Community Centre is our first project. We inspire to have an integrated community with a strong sense of belonging that welcomes all. Helping support and strengthen the lives of every person in Broxbourne. Providing opportunities for our local residents to get together to learn, have fun, make friends, and thrive.

Classification

- **How:** Provides Services, Provides Advocacy/advice/information
- **What:** Economic/community Development/employment

Geography

- **Area of benefit:** BROXBOURNE AND THE SURROUNDING AREA
- Hertfordshire

Finances

Period end	Income	Expenditure	Assets	Employees
2025-06-30	£250,002	£161,398	-	-
2024-06-30	£432,196	£168,026	-	-
2023-06-30	£186,722	£146,888	-	-

Trustees

Name	Role	Appointed
Dr Noelle Jacqueline Blackman	Chair	2022-01-24
Amanda Winder		2025-04-14
David Michael Andrew Birley		2022-01-24
Jeffrey John Allen		2022-01-24
Michelle Louise Mitchell		2025-03-17
Norah Patricia Trimmings		2025-09-15
Stephen Andrew Parker		2023-08-03

BROXBOURNE BIG LOCAL

England & Wales - Charity number 1197644

Accounts



DIRECTORS' AND TRUSTEES' REPORT AND ACCOUNTS

FOR THE YEAR ENDED 30TH JUNE 2025

Charity number: 1197644

Company number: 12055143

BROXBOURNE BIG LOCAL

CONTENTS

	<u>Page</u>
Directors' and Trustees' Report	2 – 10
Report of the Independent Examiner	11
Statement of Financial Activities	12
Balance Sheet	13
Notes to the Accounts	14 – 23

BROXBOURNE BIG LOCAL

DIRECTORS' AND TRUSTEES' REPORT

FOR THE YEAR ENDED 30TH JUNE 2025

The trustees who are also directors of the charity for the purposes of the Companies Act 2006, present their report with the financial statements of the charity for the year ended 30 June 2025. The financial statements have been prepared in accordance with the accounting policies set out in notes to the financial statements and comply with the charitable company's Memorandum and Articles of Association, the Companies Act 2006 and "Accounting and Reporting by Charities: Statement of Recommended Practice applicable to charities preparing their accounts in accordance with the Financial Reporting Standard applicable in the UK and Republic of Ireland (FRS 102)" (effective 1 January 2019).

The objects of the charity are: -

- To develop the capacity and skills of the members of socially and economically disadvantaged community of Broxbourne in such a way that they are better able to identify and help meet, their needs and to participate fully in society.
- To promote for the benefit of the inhabitants of Broxbourne and the surrounding area the provision of community facilities for recitation or other leisure time occupation of individuals who have need of such facilities by reason of their youth, age, infirmity, or disablement, financial hardship, or social and economic circumstances or for the public at large by associating together with the said inhabitants, and the statutory authorities, voluntary and other organisation In the interests of social welfare and with the object of improving the condition of life of the said inhabitants.

Achievements and performance

The 2024–2025 year was one of resilience, growth, and strategic renewal for Broxbourne Big Local (BBL). Funding from the National Lottery Reaching Communities programme enabled the retention of key staff, ensuring the uninterrupted operation of Wormley Community Centre (WCC) during essential refurbishment and extension works. This stability allowed local hall hirers to continue delivering vital services, generate income, and sustain the Centre as a thriving community hub.

Over the year, BBL reached approximately 1,200 residents through 10 community events, 3 social inclusion initiatives, and collaboration with 16 local partner organisations. We focused on engaging underserved groups, including single parents, school-aged children, people with SEN, and refugees and asylum seekers. Strategic partnerships and involvement in multi-agency networks strengthened our local profile, supported wellbeing programmes, and increased demand for hall hire.

Volunteer recruitment and development were key priorities, with 4 new volunteers onboarded, including participants from refugee and asylum-seeker communities, alongside 2 new trustees and a charity ambassador. Success stories demonstrate meaningful impacts on confidence, skills, and employment pathways.

Looking forward, BBL will focus on sustainability and empowerment by expanding volunteer roles, enhancing facilities, launching a new website, and implementing a comprehensive volunteer training and development strategy. These initiatives will strengthen staffing, increase community engagement, and ensure Wormley Community Centre remains an inclusive, vital hub for Broxbourne.

Impact Overview

Figures are based on internal logs, registration lists, and attendance estimates where formal tracking wasn't possible. Numbers reflect our best efforts to measure reach within our capacity.

 **New Multi-Agency Networks Joined: 2**

 **Local Partner Organisations Engaged: 16**

 **Community Events Hosted: 10**

 **Social Inclusion Events: 3**

BROXBOURNE BIG LOCAL

DIRECTORS' AND TRUSTEES' REPORT

FOR THE YEAR ENDED 30TH JUNE 2025

 **New Hall Hire Activities (Income-Generating):** 8

 **New Volunteers Recruited:** 4

 **Resident Forum – New Individuals Engaged:** 20

 **Total Residents Reached:** ~1,200

 **New Demographics Reached:**


Single Parents, School-Aged Children, People with SEN, Refugees & Asylum Seekers


At the start of this funding period, the Centre faced the potential loss of both full-time staff roles, which would have threatened the charity's future and disrupted the services provided to our community. Reaching Communities funding enabled us to retain both staff members, ensuring the Centre remained fully operational. This stability allowed hirers to continue delivering their services, generate rental income, and support the long-term sustainability of WCC as a central hub for Broxbourne Big Local's charitable mission, while also allowing ongoing refurbishment and extension works funded by COF and Wormley & Turnford Big Local to proceed uninterrupted.

The photo shows the new completed building extension



We're proud to share that Cassell Architects, the team who led the extension and refurbishment of Wormley Community Centre, have won two major accolades at the BUILD Architecture Awards:

 Social Value Architect of the Year 2025 – Southern England

 Community Development Project of the Year 2025 (Hertfordshire) for Wormley Community Centre

Strategic Insights and Networking

Our two-year impact report from the legacy Wormley Turnford Big Local project highlighted service gaps and underrepresented demographic groups. This data informed our strategy, guiding partnership development, event hosting, and outreach to underserved populations.

We strengthened connections with local organisations and joined two new multi-agency networks: the Voluntary, Community, and Social Faith Enterprise (VCSFE) network and the PPL Integrated Neighbourhood Team in Healthcare. These partnerships supported joined-up working, contributing to broader health and wellbeing strategies

BROXBOURNE BIG LOCAL

DIRECTORS' AND TRUSTEES' REPORT

FOR THE YEAR ENDED 30TH JUNE 2025

and raising our profile as a local charity. This has not only strengthened our role as a charity but has also increased hall hire demand—particularly from NHS and Integrated Care Board programmes delivering health sessions, wellbeing activities, and early intervention services that meet local needs. These include NHS Diabetes Prevention, Mental Health one-to-one support, Youth Offender programmes, and Bump & Baby support for new parents, helping us reach a wider range of community members and respond to critical local needs.

Community Events and Partnerships

Over the year, BBL hosted **10 community events** in collaboration with 16 partner organisations. Events promoted inclusion, social connection, and access to vital services, while generating feedback to inform future planning. Key events included:

- **Resident Community Day** – in partnership with B3Living
- **BBL Christmas Craft Fair** – supporting local makers and community groups
- **Community Christmas Party** – festive celebration with food, gifts, and activities
- **DJ & MC Talent Showcase** – highlighting youth skills developed through the MC Academy

Social Inclusion Initiatives

We delivered a range of events focused on social inclusion, including:

- Blue Monday wellbeing event supporting single parents
- Allotment Open Day for environmental awareness and community gardening
- Free Breakfast Club with takeaway options for younger residents
- Monthly Afternoon Teas in partnership with Precious Charity
- Winter Support for older residents, in collaboration with Age UK
- Food Pantry with Hearts Helping Hearts
- Older Persons Advisory Learning (OPAL) workshops on energy savings and benefits

Blue Monday engaged 19 single parents and their children, connecting them to services including Step2Skills, Change Grow Live, B3Living, Broxbourne Social Prescribers, and Safer Places. Feedback highlighted demand for online courses supporting a return to work, which will guide future programming.

Reaching Underserved Groups

We relaunched our warm spaces initiative, The Breakfast Club, increasing engagement from school-aged children by offering a takeaway option, with up to 18 children per day collecting their breakfast on the way to school. Some children also appreciated having a small snack to take home for later in the day. The Breakfast Club was hosted by one of our new volunteers from the asylum-seeker community, who was delighted to support a local charity. The children looked forward to their conversations with our volunteers, often sharing what they had planned for the day, creating a friendly and welcoming start to their mornings.



BROXBOURNE BIG LOCAL

DIRECTORS' AND TRUSTEES' REPORT

FOR THE YEAR ENDED 30TH JUNE 2025

OPAL (Older Persons Advisory Learning) sessions supported 85 older residents, with evaluation showing:

- 62% more confident in managing health and wellbeing
- 69% better equipped to maintain personal safety
- 54% feeling more socially connected
- 85% more aware of available support



New hall hire activities included health and wellbeing programmes, early years development, and recreational activities for children and youth. Through our MC & DJ Academy, two local teenagers achieved NVQ-equivalent qualifications in DJing and lyric writing. Both were then given the opportunity to support and co-run workshops as ambassadors for the Wormley Community Centre group, helping to inspire and mentor other young participants.



BROXBOURNE BIG LOCAL

DIRECTORS' AND TRUSTEES' REPORT (Cont/d)

FOR THE YEAR ENDED 30TH JUNE 2025

Staffing and Volunteer Development

Following a staff resignation, we temporarily engaged administrative support and undertook a staffing review. This resulted in the creation of **two new part-time roles**:

- Volunteer Coordinator – supporting volunteer recruitment and training
- Bar Manager (recruitment in progress) – supporting income generation and volunteer initiatives

We recruited **four operational volunteers, two new trustees, a charity ambassador**, enhancing long-term sustainability. Initiatives also supported volunteers with SEN, mental health challenges, and medical conditions.

Partnerships with Integration Support Services enabled us to onboard volunteers from refugee and asylum-seeking communities, enhancing diversity and integration.

Volunteer Success Stories

Abduljabar – A participant in the Able2enable programme, Abduljabar has regained confidence through volunteering as Caretaker Support. He contributes to building upkeep, gardening, and security, while gaining valuable experience and pathways toward employment.

William – Facing social challenges and managing mental health issues, William has begun supporting us remotely with bookings. He has expressed gratitude for the role, noting that it provides consistency, purpose, and a meaningful way to contribute to the community.

Alex – Alex, who is neurodiverse, began volunteering to gain experience and improve his employment prospects. He supported caretaking duties for hall hire set-ups, developing practical skills and discovering his strengths. Since volunteering with Broxbourne Big Local, Alex has secured a role as a porter for the NHS, where he thrives, using his love for interacting with older people and enthusiasm for helping others.

Peter – Our long-term volunteer, who has supported the development of Wormley Community Centre since the charity's inception, has made significant contributions to the internal refurbishments. His dedication and expertise have been instrumental in improving the facilities, creating a welcoming and functional space for the community.



BROXBOURNE BIG LOCAL
DIRECTORS' AND TRUSTEES' REPORT (Cont/d)
FOR THE YEAR ENDED 30TH JUNE 2025

Supporting Local Businesses

BBL continues to support new and local businesses. Following a community connection evening, where local residents had the opportunity to share their views and concerns, we engaged a new local security company to support health and safety for our private hall hire events at the community centre.

Looking Ahead

Our focus remains on sustainability and community empowerment. Key initiatives for the coming year include:

- Launching a Volunteer Training and Development Strategy
- Expanding volunteer roles in bar operations, event support, marketing, project development, and childcare
- Enhancing WCC facilities with new resources for the nursery and kitchen improvements
- Launching a user-friendly website and promotional materials to increase visibility and engagement

These improvements will strengthen BBL's staffing structure, support growing activities, and maintain Wormley Community Centre as an inclusive, vital community hub.



Public benefit statement

In shaping our objectives for the year and planning our activities, the trustees have considered the Charity Commission's guidance on public benefit, including the guidance 'public benefit: running a charity (PD2)'. The achievements and activities above demonstrate the public benefit arising through the Charity's activities.

FINANCIAL REVIEW

The Statement of Financial Activities showed income of £250,002 (2024 – £432,196) and expenditure of £161,398 (2024 - £168,026) resulting in a net surplus of £88,604 (2024 - £264,170) for the year and reserves stand at £456,454 (2024 - £367,850). The financial position at the year revealed by the Balance Sheet shows net current assets or working capital of £35,607 (2024 – £264,631). The net book value of fixed assets held, all of which are used directly for charitable purposes, amounted to £420,847 (2024 – £103,219).

BROXBOURNE BIG LOCAL

DIRECTORS' AND TRUSTEES' REPORT (Cont/d)

FOR THE YEAR ENDED 30TH JUNE 2025

Principal funding sources

The principal sources of funding for the year as summarised at Note 2 and Note 3 on page 17. These indicate a diverse range of funding including grant aid from Wormley and Turnford Big Local, grants from the Hertfordshire County Council, Hertfordshire Community Foundation and National Lottery and income from the hire of space at the Community Centre.

The charity intends to build on this funding diversity in future years.

Investment powers and policy

Under the Memorandum and Articles of Association, the charity has the power to make any investment which the trustees see fit. The trustees have considered the most appropriate policy for investing funds and have found that cash deposits meet their requirements to generate income.

Reserves policy

The Trustees aim to maintain reserves equivalent to between three and six months of normal operating expenditure, excluding costs already secured by committed funding.

The trustees consider that the Charity's reserves will enhance the services offered and provide financial security for the future. As at the year end accounts showed reserves of £456,454 (2024 - £367,850), of which £395,100 (2024 - £308,102) was restricted. The unrestricted funds not designated or invested in tangible fixed assets held by the charity are £24,434 (2024 - £44,224).

STRUCTURE, GOVERNANCE AND MANAGEMENT

Governing document

Broxbourne Big Local was established under a Memorandum of Association which established the objects and powers of the charitable company and is governed under its Articles of Association. The organisation is a charitable company limited by guarantee and not having a capital divided by shares.

The company was incorporated on 17th June 2019 and registered as a charity on 24th January 2022. The company registration number is 12055143 and the Charity number is 1197644.

Recruitment and appointment of trustees

In recruiting and appointing new trustees, the Board considers the mix of skills and experience required. The Board of Trustees have power to appoint additional trustees as it considers fit to do so.

Trustee induction and training

The trustees maintain a good working knowledge of charity law and best practice by regular reading of charity press articles and guidance produced by the Charity Commission and other Government and voluntary organisation advisory websites. New trustees are given copies of previous minutes and attend an induction session given by an experienced Trustee.

Organisation

The charity is organised so that the trustees meet regularly to manage its operational and finance affairs. The trustees are members from a variety of backgrounds with relevant professional experience.

The charity is grateful to Wormely and Turnford Big Local for deploying staff employed by its trusted partner Community Alliance Broxbourne and East Herts (CABAH) to provide excellent management, maintenance, booking,

BROXBOURNE BIG LOCAL

DIRECTORS' AND TRUSTEES' REPORT (Cont/d)

FOR THE YEAR ENDED 30TH JUNE 2025

community development and promotional and marketing services at the Community Centre and in the wider community. The charity thanks the staff also.

Related parties

The charity works collaboratively with several other voluntary and not-for-profit organisations in pursuing its charitable activities.

Four of the trustees (Noelle Blackman, David Birley, Stephen Parker and Jeffery Allen) are community partnership members of WTBL, this is because WTBL is the unincorporated organisation that started up BBL.

Risk Management

The trustees have identified the major risks to which the charity is exposed and believe that the systems in place are adequate to mitigate those risks.

Charitable and political donations

During the year the charity made no political or charitable donations.

REFERENCE AND ADMINISTRATIVE DETAILS

Company number: 12055143

Charity number: 1197644

Directors / Trustees

Noelle Jacqueline Blackman - Chair

David Michael Andrew Birley

Jeffrey John Allen

Stephen Andrew Parker

Michelle Louise Mitchell (Appointed 17 March 2025)

Amanda Jane Winder (Appointed 14 April 2025)

Norah Patricia Trimmings (Appointed 15 September 2025)

Senior Management: Zoe Edwards (Head of Community and Partnerships)

Registered Office: Wormley Community Centre Fairfield Drive, Wormley, Broxbourne, England, EN10 6DX

Bankers: CAF Bank Limited, 25 Kings Hill Avenue, Kings Hill, West Malling, Kent, M19 4JQ

Independent examiner: Samir Shah FCA, ATII

Chartered Accountants, RAA Ramon Lee Ltd, 93 Tabernacle Street, London EC2A 4BA.

Website: www.wtbiglocal.org.uk

Trustees' responsibility statement

The Trustees (who are also directors of Broxbourne Big Local for the purposes of company law) are responsible for preparing the Annual Report and the financial statements in accordance with applicable law and United Kingdom Accounting Standards (United Kingdom Generally Accepted Accounting Practice) including Financial Reporting Standard 102 "The Financial Reporting Standard applicable in the UK and Republic of Ireland"

BROXBOURNE BIG LOCAL

DIRECTORS' AND TRUSTEES' REPORT (Cont/d)

FOR THE YEAR ENDED 30TH JUNE 2025

Company law requires the trustees to prepare financial statements for each financial year which give a true and fair view of the state of affairs of the charitable company and of the incoming resources and application of resources, including the income and expenditure for that period. In preparing these financial statements, the trustees are required to:

- select suitable accounting policies and then apply them consistently;
- observe the methods and principles in the Charities SORP;
- make judgements and estimates that are reasonable and prudent;
- state whether applicable UK Accounting Standards have been followed, subject to any material departures disclosed and explained in the financial statements;
- prepare the financial statements on the going concern basis unless it is inappropriate to presume that the charitable company will continue in business.

The trustees are responsible for keeping proper accounting records that disclose with reasonable accuracy at any time the financial position of the charitable company and enable them to ensure that the financial statements comply with the Companies Act 2006. They are also responsible for safeguarding the assets of the charitable company and hence for taking reasonable steps for the prevention and detection of fraud and other irregularities.

The trustees are responsible for maintenance and integrity of the corporate and financial information included on the charitable company's website. Legislation in the United Kingdom governing the preparation and dissemination of financial statements may differ from legislation in other jurisdictions.

This report has been prepared in accordance with the special provisions of Part 15 of the Companies Act 2006 relating to small companies.

Approved by order of the board of trustees on 23 March 2026 and signed on its behalf by:

Signed by:

Noelle Blackman

607BE22D8AB7474...

NOELLE BLACKMAN (CHAIR)

INDEPENDENT EXAMINER'S REPORT TO THE TRUSTEES OF BROXBOURNE BIG LOCAL

I report to the trustees on my examination of the financial statements of Broxbourne Big Local (the charitable company) for the year ended 30 June 2025.

This report is made solely to the charity's trustees, as a body, in accordance with the Charities Act 2011. My work has been undertaken so that I might state to the charity's trustees those matters I am required to state to them in an independent examiner's report and for no other purpose. To the fullest extent permitted by law, I do not accept or assume responsibility to anyone other than the charity and the charity's trustees as a body, for my Independent Examination, for this report, or for the opinions I have formed.

Responsibilities and basis of report

As the trustees of the charitable company (and also its directors for the purposes of company law) you are responsible for the preparation of the financial statements in accordance with the requirements of the Companies Act 2006 (the 2006 Act).

Having satisfied myself that the financial statements of the charitable company are not required to be audited under Part 16 of the 2006 Act and are eligible for independent examination, I report in respect of my examination of the charitable company's financial statements carried out under section 145 of the Charities Act 2011 (the 2011 Act). In carrying out my examination I have followed all the applicable Directions given by the Charity Commission under section 145(5)(b) of the 2011 Act.

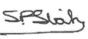
Independent examiner's statement

Since the charity's gross income exceeded £250,000 your examiner must be a member of a body listed in section 145 of the 2011 Act. I confirm that I am qualified to undertake the examination because I am a member of ICAEW, which is one of the listed bodies.

I have completed my examination. I confirm that no matters have come to my attention in connection with the examination giving me cause to believe that in any material respect:

1. accounting records were not kept in respect of the charitable company as required by section 386 of the 2006 Act; or
2. the financial statements do not accord with those records; or
3. the financial statements do not comply with the accounting requirements of section 396 of the 2006 Act other than any requirement that the accounts give a true and fair view which is not a matter considered as part of an independent examination; or
4. the financial statements have not been prepared in accordance with the methods and principles of the Statement of Recommended Practice for accounting and reporting by charities applicable to charities preparing their accounts in accordance with the Financial Reporting Standard applicable in the UK and Republic of Ireland (FRS 102).

I have no concerns and have come across no other matters in connection with the examination to which attention should be drawn in this report in order to enable a proper understanding of the financial statements to be reached.

Signed by:

BFA6442682BF4CE...

Samir Shah FCA, ATII
RAA Ramon Lee Ltd
Chartered Accountants
93 Tabernacle Street
London
EC2A 4BA

Dated: 23 March 2026

BROXBOURNE BIG LOCAL
STATEMENT OF FINANCIAL ACTIVITIES
FOR THE YEAR ENDED 30TH JUNE 2025

SUMMARY INCOME AND EXPENDITURE ACCOUNT

	Notes	Unrestricted Funds £	Restricted Funds £	Total 2025 £	Total 2024 £
Income					
Grants and donations	2	563	184,018	184,581	346,174
Income from charitable activities	3	55,339	9,250	64,589	85,786
Income from trading activities	4	490	-	490	-
Investment income	5	342	-	342	236
Total income		56,734	193,268	250,002	432,196
Expenditure					
Cost of raising funds	6	4,609	-	4,609	12,987
Expenditure on charitable activities	6	52,962	103,827	156,789	155,039
Total expenditure		57,571	103,827	161,398	168,026
Net income / (expenditure)		(837)	89,441	88,604	264,170
Transfer between funds		2,443	(2,443)	-	-
Net movement in funds		1,606	86,998	88,604	264,170
<i>Reconciliation of funds</i>					
Total funds, brought forward		59,748	308,102	367,850	103,680
Total funds, carried forward		61,354	395,100	456,454	367,850

CONTINUING OPERATIONS

None of the company's activities were acquired or discontinued during the above two financial periods.

TOTAL RECOGNISED GAINS AND LOSSES

The company has no recognised gains or losses other than the above movement in funds for the above two financial periods.

The notes on pages 14 to 23 form part of these accounts.

BROXBOURNE BIG LOCAL

BALANCE SHEET AS AT 30TH JUNE 2025

	Notes	2025		2024	
		£	£	£	£
Fixed assets					
Tangible assets	11		420,847		103,219
Current assets					
Debtors	12	13,653		11,996	
Cash at bank and in hand		57,648		286,077	
		<u>71,301</u>		<u>298,073</u>	
Liabilities					
Creditors falling due with in one year	13	(35,694)		(33,442)	
				<u>35,607</u>	<u>264,631</u>
Net current assets					
			<u>456,454</u>		<u>367,850</u>
Funds					
Unrestricted funds:	14		61,354		59,748
Restricted funds	14		395,100		308,102
Total funds			<u>456,454</u>		<u>367,850</u>

In preparing these financial statements:

For the financial period ended 30th June 2025 the company was entitled to exemption from audit under section 477 Companies Act 2006. No member of the company has deposited a notice, pursuant to section 476, requiring an audit of these financial statements under the requirements of the Companies Act 2006.

The directors acknowledge their responsibilities for:

- a) ensuring that the charitable company keeps accounting records that comply with Sections 386 and 387 of the Companies Act 2006 and
- b) preparing accounts which give a true and fair view of the state of affairs of the charitable company as at the end of each financial year and of its surplus or deficit for each financial year in accordance with the requirements of Sections 394 and 395 and which otherwise comply with the requirements of the Companies Act 2006 relating to accounts, so far as applicable to the charitable company.

These financial statements have been prepared in accordance with the provisions applicable to companies subject to the small companies' regime within Part 15 of the Companies Act 2006.

These financial statements were approved by the Board of Directors and Trustees on 23 March 2026 and were signed on its behalf by:

Signed by:

Noelle Blackman

6079E22D8AB7474

NOELLE BLACKMAN (CHAIR)

Company number: 12055143

The notes on pages 14 to 23 form part of these accounts.

BROXBOURNE BIG LOCAL**NOTES TO THE ACCOUNTS****FOR THE YEAR ENDED 30TH JUNE 2025****1. ACCOUNTING POLICIES****1.1 Basis of preparation of accounts**

The financial statements have been prepared in accordance with the charitable company's Memorandum and Articles of Association, the Companies Act 2006, FRS 102 "The Financial Reporting Standard applicable in the UK and Republic of Ireland" ("FRS 102") and the Charities SORP "Accounting and Reporting by Charities: Statement of Recommended Practice applicable to charities preparing their accounts in accordance with the Financial Reporting Standard applicable in the UK and Republic of Ireland (FRS 102)" (effective 1 January 2019).

Broxbourne Big Local meets the definition of a public benefit entity under FRS 102.

The financial statements are prepared in sterling, which is the functional currency of the Charity. Monetary amounts in these financial statements are rounded to the nearest £.

The accounts (financial statements) have been prepared under the historical cost convention with items recognised at cost or transaction value unless otherwise stated in the relevant note(s) to these accounts.

The principal accounting policies adopted are set out below.

1.2 Preparation of accounts on a going concern basis

The charity's financial statements show a net surplus of £88,604 (2024 - 264,170) for the year and free reserves stand at £24,434 (2024 - £44,224). The trustees are of the view that these results have secured the immediate future of the Charity for the next 12 to 18 months and on this basis the Charity is a going concern.

1.3 Income recognition

All income is included in the statement of financial activities when the charity is legally entitled to it, receipt is probable and the amount can be measured with sufficient reliability.

Grant income

Grants are credited to the SOFA when the charity is entitled to the funds. Income is only deferred where there are time constraints imposed by the donor or if the funding is performance related.

Where entitlement to grants receivable is dependent upon fulfilment of conditions within the charity's control, the income is recognised when there is sufficient evidence that conditions will be met.

Grants supporting the core activities of the charity and with no specific restrictions placed upon their use are included within donations and legacies. Grants that have specific restrictions placed upon their use are included within income from charitable activities.

Capital grants for the purchase of fixed assets are credited to restricted incoming resources on the earlier date of when they are received or receivable. Depreciation on the related fixed assets is charged against the restricted fund.

Donations and legacies

Donations are recognised in the period in which they are received. Legacy income is recognised when the charity's entitlement is judged to be probable and where the amount can be reliably measured.

Contract income

Income from charitable activities include income recognised as earned (as the related goods and services are provided) under contract.

Room hire and service charge income

Room hire and service charge income are credited to income in the year in which they are receivable.

Investment income

Investment income is included when receivable.

BROXBOURNE BIG LOCAL

NOTES TO THE ACCOUNTS

FOR THE YEAR ENDED 30TH JUNE 2025

1.4 Volunteers and donated services and facilities

Donated professional services and donated facilities are recognised as income when the charity has control over the item, any conditions associated with the donated item have been met, the receipt of economic benefit from the use by the charity of the item is probable and that economic benefit can be measured reliably. In accordance with the Charities SORP (FRS 102), the general volunteer time are not recognised and refers to the trustees' annual report for more information about their contribution.

On receipt, donated professional services and donated facilities are recognised on the basis of the value of the gift to the charity which is the amount the charity would have been willing to pay to obtain services or facilities of equivalent economic benefit on the open market; a corresponding amount is then recognised in expenditure in the period of receipt.

1.5 Expenditure recognition and irrecoverable VAT

Expenditure is recognised once there is a legal or constructive obligation to make a payment to a third party, it is probable that settlement will be required and the amount of the obligation can be measured reliably.

Expenditure is classified under the following activity headings:

- (a) Cost of raising funds comprises costs of seeking grants and donations and their associated support costs.
- (b) Expenditure on charitable activities include expenditure associated with the main objectives of the Charity and include both direct costs and their associated support costs.

Irrecoverable VAT is charged as a cost against the activity for which the expenditure was incurred.

1.6 Allocation of support costs

Support costs are those functions that assist the work of the charity but do not directly undertake charitable activities. Support costs include back office costs, management, finance and administration personnel and governance costs which support the charity's programmes and activities. These costs have been allocated between cost of raising funds and expenditure on charitable activities in the proportion of direct costs.

1.7 Funds structure

The general fund comprises those monies, which may be used toward meeting the charitable objectives of the charity at the discretion of the Management Board.

The restricted funds are monies raised for, and their use restricted to, a specific purpose or donations subject to donor imposed conditions.

1.8 Tangible fixed assets and depreciation

Tangible fixed assets are stated at cost less depreciation. Individual fixed assets costing £500 or more are capitalised at cost.

Depreciation is provided at rates calculated to write off the cost or valuation of fixed assets, less their estimated residual value, over their expected useful lives on the following bases.

Leasehold land and building	-	Over 50 years
Fixtures, fittings & equipment	-	20% on cost

1.9 Debtors

Trade and other debtors are recognised at the settlement amount due after any trade discount offered. Prepayments are valued at the amount prepaid net of any trade discounts due.

1.10 Cash at bank and in hand

Cash and cash equivalents include cash in hand, deposits held at call with banks, other short-term liquid investments with original maturities of three months or less, and bank overdrafts. Bank overdrafts are shown within borrowings in current liabilities.

BROXBOURNE BIG LOCAL**NOTES TO THE ACCOUNTS****FOR THE YEAR ENDED 30TH JUNE 2025****1.11 Creditors and provisions**

Creditors and Provisions are recognised when the charitable company has a legal or constructive present obligation as a result of a past event, it is probable that the charitable company will be required to settle that obligation and a reliable estimate can be made of the amount of the obligation. The amount recognised as a provision is the best estimate of the consideration required to settle the present obligation at the reporting end date, taking into account the risks and uncertainties surrounding the obligation. Where the effect of the time value of money is material, the amount expected to be required to settle the obligation is recognised at present value. When a provision is measured at present value, the unwinding of the discount is recognised as a finance cost in net income/(expenditure) in the period in which it arises.

1.12 Financial instruments

The charitable company has elected to apply the provisions of Section 11 'Basic Financial Instruments' and Section 12 'Other Financial Instruments Issues' of FRS 102 to all of its financial instruments. Financial instruments are recognised in the charitable company's balance sheet when the charitable company becomes party to the contractual provisions of the instrument. Financial assets and liabilities are offset, with the net amounts presented in the financial statements, when there is a legally enforceable right to set off the recognised amounts and there is an intention to settle on a net basis or to realise the asset and settle the liability simultaneously.

1.13 Leases

All leases are operating leases at peppercorn rent. No assets are held under hire purchase agreements.

1.14 Taxation

The Charity is a registered charity and, therefore, is not liable for Income Tax or Corporation Tax on income derived from its charitable activities, as it falls within the various exemptions available to registered charities.

1.15 Judgement and key sources of estimation uncertainty

In the application of the charity's accounting policies, the charity is required to make judgements, estimates and assumptions about the carrying amount of assets and liabilities that are not readily apparent from other sources. The estimates and associated assumptions are based on historical experience and other factors that are considered to be relevant. Actual results may differ from these estimates.

The estimates and underlying assumptions are reviewed on an ongoing basis. Revisions to accounting estimates are recognised in the period in which the estimate is revised where the revision affects only that period, or in the period of the revision and future periods where the revision affects both current and future periods.

1.16 Cash flow statement

The charity qualifies as a small charity and advantage has been taken of the exemption provided by SORP (FRS 102) (Bulletin 1 published on 2 February 2016). The charity opted to and have, therefore, not included a cash flow statement in these financial statements.

BROXBOURNE BIG LOCAL**NOTES TO THE ACCOUNTS****FOR THE YEAR ENDED 30TH JUNE 2025****2. GRANTS AND DONATIONS**

	Unrestricted Funds £	Restricted Funds £	2025 £	2024 £
Wormley & Turnford Big Local via Community Alliance Broxbourne and East Herts (Premises & Transition)	-	-	-	24,391
Wormley & Turnford Big Local via Community Alliance Broxbourne and East Herts (Building Phrase 1)	-	-	-	165,000
Department for Levelling Up, Housing and Communities (Building Phrase 1)	-	99,000	99,000	99,000
National Lottery	-	85,018	85,018	-
Donations	563	-	563	-
Wormley & Turnford Big Local via Community Alliance Broxbourne and East Herts - donation in kind	-	-	-	57,783
	<u>563</u>	<u>184,018</u>	<u>184,581</u>	<u>346,174</u>
For the year ended 30 June 2024	<u>-</u>	<u>346,174</u>	<u>-</u>	<u>346,174</u>

The charity is grateful to Wormley and Turnford Big Local for deploying staff employed by its trusted partner Community Alliance Broxbourne and East Herts (CABAH) to provide management, maintenance, booking, community development and promotional and marketing services at the Community Centre and in the wider community. The value placed by CABAH for these services are recognised within grants and donations as income and a corresponding charge is included within direct and support costs.

3. INCOME FROM CHARITABLE ACTIVITIES

	Unrestricted Funds £	Restricted Funds £	2025 £	2024 £
Community projects: <i>Grants and contracts</i>				
Communities 1st	-	3,000	3,000	1,500
Hertfordshire Community Foundation	-	5,000	5,000	5,000
Hertfordshire County Council	-	750	750	500
National Lottery	-	-	-	19,220
Tesco Stronger Start	-	500	500	-
	<u>-</u>	<u>9,250</u>	<u>9,250</u>	<u>26,220</u>
Space: Premises hire	55,339	-	55,339	59,566
	<u>55,339</u>	<u>-</u>	<u>55,339</u>	<u>59,566</u>
	<u>55,339</u>	<u>9,250</u>	<u>64,589</u>	<u>85,786</u>
For the year ended 30 June 2024	<u>59,566</u>	<u>26,220</u>	<u>-</u>	<u>85,786</u>

BROXBOURNE BIG LOCAL
NOTES TO THE ACCOUNTS (Cont/d)
FOR THE YEAR ENDED 30TH JUNE 2025

4. INCOME FROM TRADING ACTIVITIES

	Unrestricted Funds £	Restricted Funds £	2025 £	2024 £
Trading income	490	-	490	-
	<u>490</u>	<u>-</u>	<u>490</u>	<u>-</u>
For the year ended 30 June 2024	<u>-</u>	<u>-</u>	<u>-</u>	<u>-</u>

5. INVESTMENT INCOME

	Unrestricted Funds £	Restricted Funds £	2025 £	2024 £
Interest on cash deposits	342	-	342	236
	<u>342</u>	<u>-</u>	<u>342</u>	<u>236</u>
For the year ended 30 June 2024	<u>236</u>	<u>-</u>	<u>-</u>	<u>236</u>

6. ANALYSIS OF EXPENDITURE

	Raising funds £	Community projects £	Space £	2025 £	2024 £
Staff costs (Secoded)	1,998	11,987	39,499	53,484	6,983
Sessional staff	-	1,110	-	1,110	8,928
Premises costs	-	-	26,326	26,326	26,645
Depreciation	-	-	5,391	5,391	1,614
Legal and professional costs	1,050	-	2,327	3,377	7,076
Other direct costs	-	13,576	3,478	17,054	13,898
Share of support costs (Note 7)	1,401	12,259	35,398	49,058	99,325
Share of governance costs (Note 7)	160	1,399	4,039	5,598	3,557
	<u>4,609</u>	<u>40,331</u>	<u>116,458</u>	<u>161,398</u>	<u>168,026</u>
For the year ended 30 June 2024	<u>12,987</u>	<u>36,072</u>	<u>118,967</u>	<u>-</u>	<u>168,026</u>
Analysis of funds					
Unrestricted Funds				57,571	68,819
Restricted funds				<u>103,827</u>	<u>99,207</u>

BROXBOURNE BIG LOCAL
NOTES TO THE ACCOUNTS (Cont/d)
FOR THE YEAR ENDED 30TH JUNE 2025

7. ANALYSIS OF SUPPORT AND GOVERNANCE COSTS

The charity initially identifies the costs of its support functions. It then identifies those costs which relate to the governance function. Governance costs and other support costs are apportioned separately between charity's key activity undertaken (see note 6) in the year. All the general support and governance costs have been apportioned to the various charitable activities on the basis of direct costs allocated to each activity.

	Support costs	Governance costs	Total 2025	Total 2024
	£	£	£	£
Management and administration staff (seconded)	15,955	1,998	17,953	81,247
Sessional staff	7,985	-	7,985	-
Premises and equipment costs	3,453	-	3,453	4,020
Communication and IT Costs	1,978	-	1,978	1,651
Legal and professional costs	15,994	-	15,994	11,477
Sundry expenses	3,693	-	3,693	1,547
Independent examiner's fees	-	3,600	3,600	2,940
	<u>49,058</u>	<u>5,598</u>	<u>54,656</u>	<u>102,882</u>
For the year ended 30 June 2024	<u>99,325</u>	<u>3,557</u>	<u>-</u>	<u>102,882</u>

8. NET INCOME / (EXPENDITURE) FOR THE YEAR

	2025	2024
	£	£
Net movement in funds is shown after charging:		
Depreciation on tangible fixed assets	5,391	1,614
Independent examiner's fees	<u>3,600</u>	<u>2,940</u>

8.1 ANALYSIS OF STAFF COSTS, TRUSTEES REMUNERATION AND EXPENSES, AND COST OF KEY MANAGEMENT PERSONNEL

	2025	2024
	£	£
STAFF COSTS		
Staff costs (seconded)	71,437	88,230
Sessional staff	<u>9,095</u>	<u>8,928</u>
	<u>80,532</u>	<u>97,158</u>

No staff were employed during the year and the preceding year.

The Community Alliance Broxbourne and East Herts provided seconded staff to the charity totalling £71,437 (2024 – £88,230).

BROXBOURNE BIG LOCAL

NOTES TO THE ACCOUNTS (Cont/d)

FOR THE YEAR ENDED 30TH JUNE 2025

The key management personnel of the charity are listed on the legal and administrative page. The total employee benefits of the key management personnel of the charity including seconded staff were £39,956 (2024 - £36,800).

No trustees have received any remuneration from the charity during the year (2024 - £Nil). No trustees have received any other benefits from the charity during the year (2024 - £Nil). None of the trustees received reimbursed expenses during the year (2024 - £Nil).

9. STAFF NUMBERS

The average monthly number of persons employed by the charity during the year was Nil (2024 – Nil).

10. TANGIBLE FIXED ASSETS

NET BOOK VALUES	2025	2024
	£	£
Long Leasehold land & building	407,400	96,597
Fixtures, fittings & equipment	13,447	6,622
	420,847	103,219

MOVEMENTS IN YEAR

<u>Cost or valuation</u>	Opening Balances	Additions	Disposals	Closing Balances
	£	£	£	£
Long Leasehold land & building	97,575	314,546	-	412,121
Fixtures, fittings & equipment	8,242	8,473	-	16,715
	105,817	323,019	-	428,836

<u>Depreciation</u>	Opening Balances	Charge For Year	Disposals	Closing Balances
	£	£	£	£
Long Leasehold land & building	978	3,743	-	4,721
Fixtures, fittings & equipment	1,620	1,648	-	3,268
	2,598	5,391	-	7,989

The long leasehold property represents the land and building Wormley Community Centre and the car park. The property was leased to Broxbourne Big Local from The Council of the Borough of Broxbourne on a 999-year lease and the charity is committed to running the property as a community centre.

11. DEBTORS

	Total 2025	Total 2024
	£	£
Grant and rental debtors	7,649	5,516
Prepayments	6,004	6,480
	13,653	11,996

BROXBOURNE BIG LOCAL
NOTES TO THE ACCOUNTS (Cont/d)
FOR THE YEAR ENDED 30TH JUNE 2025

12. CREDITORS: amounts falling due within one year

	Total 2025 £	Total 2024 £
Trade creditors	4,929	17,710
Other creditors	16,117	5,386
Accruals	8,176	4,280
Deferred income (note 15)	6,472	6,066
	<u>35,694</u>	<u>33,442</u>

13. MOVEMENT IN FUNDS

	Balance at 01.07.2024 £	Income £	Expenditure £	Transfers £	Balance at 30.06.2025 £
Restricted funds:					
Wormley & Turnford Big Local via Community Alliance Broxbourne and East Herts (Premises & Transition)	-	-	-	-	-
Wormley & Turnford Big Local via Community Alliance Broxbourne and Department for Levelling Up, Housing and Communities (Building Phrase 1)	102,796	-	-	(102,796)	-
Communities 1st	-	3,000	3,000	-	-
Hertfordshire Community Foundation	4,336	5,000	4,887	-	4,449
Hertfordshire County Council	-	750	750	-	-
National Lottery	-	85,018	75,851	(2,443)	6,724
National Lottery	14,275	-	14,275	-	-
Tesco Stronger Start	-	500	500	-	-
Building improvements	87,695	-	3,625	299,857	383,927
Total restricted funds	<u>308,102</u>	<u>193,268</u>	<u>103,827</u>	<u>(2,443)</u>	<u>395,100</u>
Unrestricted funds	59,748	56,734	57,571	2,443	61,354
Total funds	<u>367,850</u>	<u>250,002</u>	<u>161,398</u>	<u>-</u>	<u>456,454</u>

BROXBOURNE BIG LOCAL

NOTES TO THE ACCOUNTS (Cont/d)

FOR THE YEAR ENDED 30TH JUNE 2025

Movement in funds – previous year

	Balance at 01.07.2023 £	Income £	Expenditure £	Transfers £	Balance at 30.06.2024 £
Restricted funds:					
Wormley & Turnford Big Local via Community Alliance Broxbourne and East Herts (Premises)	11,180	82,174	83,177	(10,177)	-
Wormley & Turnford Big Local via Community Alliance Broxbourne and East Herts (Building Phrase 1)	-	165,000	-	(62,204)	102,796
Department for Levelling Up, Housing and Communities (Building Phrase 1)	-	99,000	-	-	99,000
Communities 1st	-	1,500	1,500	-	-
Hertfordshire Community Foundation	-	5,000	664	-	4,336
Hertfordshire County Council	7,009	500	7,509	-	-
National Lottery	-	19,220	4,945	-	14,275
National Lottery Awards for All	1,086	-	1,086	-	-
Building improvements	15,640	-	326	72,381	87,695
Total restricted funds	34,915	372,394	99,207	-	308,102
Unrestricted funds	68,765	59,802	68,819	-	59,748
Total funds	103,680	432,196	168,026	-	367,850

Description, nature and purpose of restricted funds:

- Wormley & Turnford Big Local – Reopening, refresh and refurbishment of the Community Centre and running costs of the Community Centre.
- Department for Levelling Up, Housing and Communities (Building Phrase 1) – For the extension and refurbishment of the building.
- Communities 1st - Welcome Space as part of the "Welcome Space Network" project in Hertfordshire and Bedfordshire, UK. To provide support and resources for vulnerable and isolated individuals, focusing on community engagement, energy support, benefits advice, and digital inclusion programmes.
- Hertfordshire Community Foundation – Household Support Grant enabled BBL to provide a warm space breakfast club at Wormley Community Centre.
- Hertfordshire County Council – Providing positive activities free of charge in the local area, in a trusted safe space for teenagers.
- National Lottery - To improve facilities and service provision in Wormley and Turnford in order to address anti-social behaviour and provide a safe space for local young residents
- National Lottery Awards for All – New garden shed, benches and tools for allotment group.
- Building improvements – Community centre building improvement costs. Balance carried forward represents undepreciated costs.
- Tesco Stronger Start- Workshop fund to support pre-school children enhancing social welfare and wellbeing.

Description, nature and purpose of unrestricted funds:

Unrestricted funds: General fund represents funds available to spend at the discretion of the trustees.

Transfer of funds represent contribution towards a fixed asset addition funded by the national lottery. There is no restriction for the use of this asset.

BROXBOURNE BIG LOCAL**NOTES TO THE ACCOUNTS (Cont/d)****FOR THE YEAR ENDED 30TH JUNE 2025****14. ANALYSIS OF FUND BALANCES BETWEEN NET ASSETS**

	Unrestricted Funds £	Restricted Funds £	Total 2025 £
Tangible fixed assets	36,920	383,927	420,847
Net current assets	24,434	11,173	35,607
	<u>61,354</u>	<u>395,100</u>	<u>456,454</u>

Analysis of fund balances between net assets – previous year

	Unrestricted Funds £	Restricted Funds £	Total 2024 £
Tangible fixed assets	15,524	87,695	103,219
Net current assets	44,224	220,407	264,631
	<u>59,748</u>	<u>308,102</u>	<u>367,850</u>

15. DEFERRED INCOME

	2025 £	2024 £
Balance brought forward	6,066	7,952
Amounts released from previous periods	(6,066)	(7,952)
Amounts deferred in the year	6,472	6,066
Balance carried forward	<u>6,472</u>	<u>6,066</u>

Deferred income represents £6,472 premises hire income received in advance for 2025/2026.

16. SHARE CAPITAL

The company is constituted as a company limited by guarantee and does not have a share capital divided by shares.

17. RELATED PARTY TRANSACTIONS

Following related party transactions were incurred during the year and preceding year with close relatives of the trustee Noelle Blackman. The trustees obtained three quotes, and Noelle Blackman did not participate in the decisions relating to these transactions:

- Architectural services £19,590 (2024 - £13,275) provided by a company controlled by a close relative.

Four of the trustees (Noelle Blackman, David Birley, Stephen Parker and Jeffrey Allen) are community partnership members of Wormley & Turnford Big Local (WTBL), the WTBL is the unincorporated organisation that started up Broxbourne Big Local. The WTBL deployed staff employed by its trusted partner Community Alliance Broxbourne and East Herts (CABAH) to provide management, maintenance, booking, community development and promotional and marketing services at the Community Centre and in the wider community. The value placed by CABAH for this donation in kind is £Nil (2024 - £57,783). The WTBL gave the charity grant funding of £Nil (2024 - £82,174).

BROXBOURNE BIG LOCAL

England & Wales - Charity number 1197644

Accounts



BROXBOURNE BIG LOCAL

DIRECTORS' AND TRUSTEES' REPORT AND ACCOUNTS

FOR THE YEAR ENDED 30TH JUNE 2024

Charity number: 1197644

Company number: 12055143

BROXBOURNE BIG LOCAL

CONTENTS

	<u>Page</u>
Directors' and Trustees' Report	2 – 8
Report of the Independent Examiner	9
Statement of Financial Activities	10
Balance Sheet	11
Notes to the Accounts	12 – 20

BROXBOURNE BIG LOCAL
DIRECTORS' AND TRUSTEES' REPORT
FOR THE YEAR ENDED 30TH JUNE 2024

The trustees who are also directors of the charity for the purposes of the Companies Act 2006, present their report with the financial statements of the charity for the year ended 30 June 2024. The trustees have adopted the provisions of Charities Act 2011, the Companies Act 2006, the Memorandum and Articles of Association, and Accounting and Reporting by Charities: Statement of Recommended Practice applicable to charities preparing their financial statements in accordance with the Financial Reporting Standard applicable in the UK and Republic of Ireland (FRS 102) (effective 1 January 2019).

OUR PURPOSE AND ACTIVITIES

The objects of the charity are:

- To develop the capacity and skills of the members of socially and economically disadvantaged community of Broxbourne in such a way that they are better able to identify and help meet, their needs and to participate fully in society.
- To promote for the benefit of the inhabitants of Broxbourne and the surrounding area the provision of community facilities for recreation or other leisure time occupation of individuals who have need of such facilities by reason of their youth, age, infirmity, or disablement, financial hardship, or social and economic circumstances or for the public at large by associating together with the said inhabitants, and the statutory authorities, voluntary and other organisation in the interests of social welfare and with the object of improving the condition of life of the said inhabitants.

Achievements and Performance

Broxbourne Big Local (BBL) was established to secure the 999-year lease of the Community Centre, with a mission to continue the legacy of Wormley and Turnford Big Local (WTBL). In October 2023, two staff members from WTBL transitioned to BBL, taking on roles as Head of Community & Partnerships and Operations & Marketing Manager. Their efforts focus on the long-term sustainability of the Community Centre and on expanding BBL's charitable impact through strategic partnerships, inclusive programming, and community-centred initiatives.



The staff's primary focus has been to collaborate with various organisations to ensure access to BBL's programs for underserved populations, including individuals with disabilities and those impacted by the rising cost of living. The charity's initiatives aim to support mental and physical health needs, provide career-development pathways, and foster volunteer opportunities. A significant part of this work has involved establishing policies that contribute to the Centre's growth, as well as the creation of an Impact Report, which has helped solidify partnerships and strategic directions.

BROXBOURNE BIG LOCAL
DIRECTORS' AND TRUSTEES' REPORT
FOR THE YEAR ENDED 30TH JUNE 2024

BBL have initiated the start of a business plan in collaboration with the charity, Cranfield Trust. This strategy aims to outline our long-term sustainability goals for the Community Centre, ensuring its continued success and ability to serve our community effectively.



Key Achievements:

Strategic Partnerships: Collaborations with Communities 1st, Cadent, Hertfordshire Community Foundation, Precious Charity, and B3 Living have opened new funding streams, enabling BBL to offer a range of services, including energy support and benefits advice.

Health and Safety Enhancements: With match funding from DHSC, BBL acquired a community defibrillator and launched first-aid training sessions in partnership with Hearts for Herts. Programs such as Heart Start and Bleed Stop training now provide life-saving skills to hall hirers and community members.

Youth and Community Engagement: BBL continues to support youth engagement through the DJ & MC Academy, encouraging creativity and positive activities that contribute to mental health and educational development. Additionally, Warm Space Clubs, such as Breakfast Club, Blue Monday Festive Lunch, and Brunch & Board Games, have provided inclusive spaces for all ages.

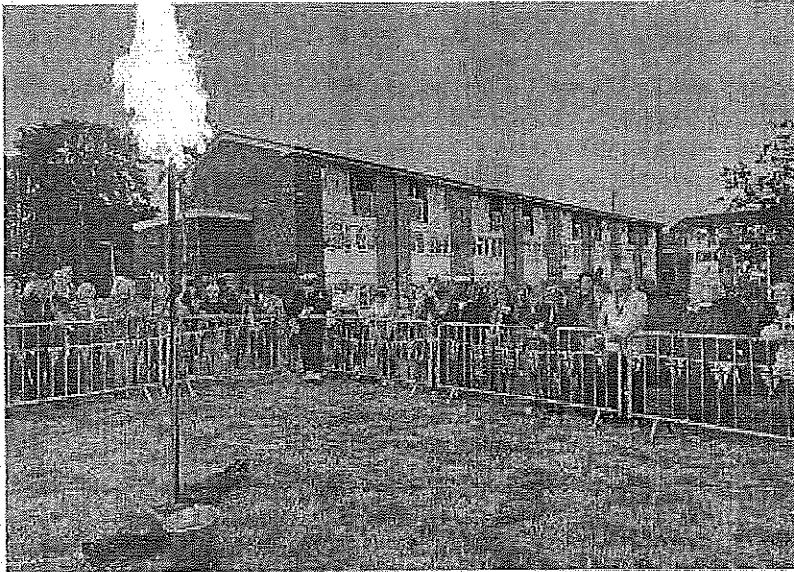
Community Events and Initiatives BBL's Community Centre has become a hub for commemorative and educational events:

BBL have hosted commemorative community events, including D-Day Beacon Lighting, Great Big Green Week to promote environmental awareness through our community allotment project, Dr Bike sessions, and Debt Awareness Week.

BROXBOURNE BIG LOCAL

DIRECTORS' AND TRUSTEES' REPORT

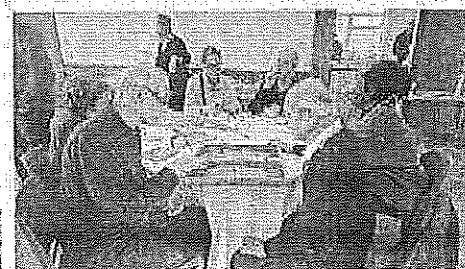
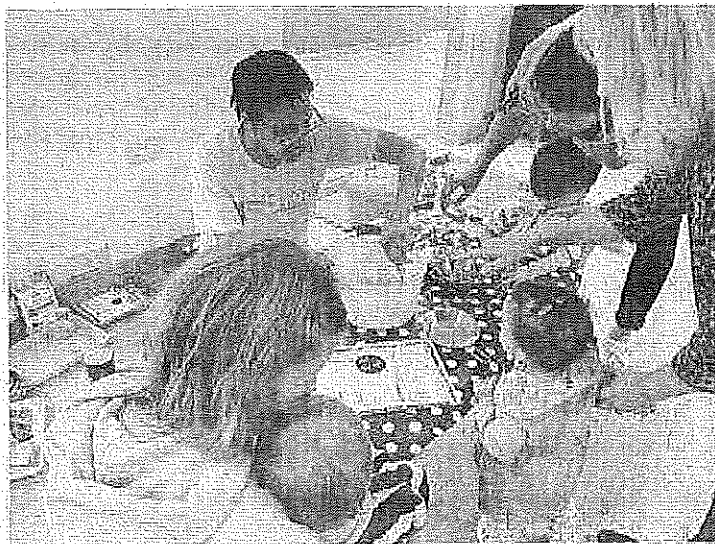
FOR THE YEAR ENDED 30TH JUNE 2024



We have launched a volunteer drive, creating new volunteer roles to address the immediate need for support in maintaining the Wormley Community Centre and its users, as well as assisting with events and projects that complement the efforts of our two staff members.

The growing demand for WCC hall hire reflects the success of these partnerships and events. Through collaboration with the NHS and other charities, we have brought essential health services to the centre, including diabetes prevention programs, mental health counselling, and free fitness classes such as Forever Cycling and Pilates.

We are also proud to have become a Breastfeeding Friendly Centre, further enhancing the support available to families.



Enhanced Booking System To streamline Centre operations, BBL developed a customised booking system for hall rentals, invoicing, and payments. This system integrates a public calendar on the BBL website, making it easier for community members to stay informed about upcoming clubs and events.

Trustee Recruitment and Governance

In a bid to strengthen governance, BBL has created a Trustee Recruitment Plan, including an informative Trustee pack to attract potential Trustees with skills to aid BBL's growth. BBL's outreach through partnership events has enhanced visibility and engagement, supporting this goal.

BROXBOURNE BIG LOCAL

DIRECTORS' AND TRUSTEES' REPORT

FOR THE YEAR ENDED 30TH JUNE 2024

Community Impact and Future Goals

With over 4,000 people visiting the Community Centre each year, BBL has positioned itself as a vital resource for residents, continually expanding its services and outreach. Through comprehensive planning, partnerships, and inclusive programming, BBL remains dedicated to fostering an inclusive, supportive environment that addresses the evolving needs of the Broxbourne community. The charity's commitment to long-term sustainability ensures that the Community Centre will continue to be a focal point for support, connection, and growth in the years ahead.



We have begun Phase 1a (total value £365k) of a multi-phase construction project that will see the community centre become fit for purpose and a building that is sustainable in terms of income. Phase 1a has been fully funded by WTBL and the Community Ownership Fund and sees an extension to include a commercial kitchen to increase private hire usage of the centre for larger functions, roof repairs, plant room improvements, bar and foyer improvements and a reconfiguration of the toilet facilities to include an accessible WC and refurb of current facilities to make it a more appropriate space for our users and increase the use of the centre by some of the most vulnerable.

Phase 1b is a £1,355,034 project that sees a foyer extension to increase the bar/café space available on a daily basis, fit-out of the commercial kitchen, new bar area and plant rooms, and associated works to complete this externally. These new facilities will allow the community centre to quickly start to build a commercial stream of income with a hospitality anchor tenant who will underpin the ever-increasing costs of cleaning and maintenance staff as well as utilities.

Public benefit statement

In shaping our objectives for the year and planning our activities, the trustees have considered the Charity Commission's guidance on public benefit, including the guidance 'public benefit: running a charity (PD2)'. The achievements and activities above demonstrate the public benefit arising through the Charity's activities.

FINANCIAL REVIEW

The Statement of Financial Activities showed income of £432,196 (2023 – 186,722) and expenditure of £168,026 (£146,888) resulting in a net surplus of £264,170 (2023 - £39,834) for the year and reserves stand at £367,850 (2023 - £103,680). The financial position at the year revealed by the Balance Sheet shows net current assets or working capital of £264,631 (2023 – £82,925). The net book value of fixed assets held, all of which are used directly for charitable purposes, amounted to £103,219 (2023 – £20,765).

Principal funding sources

The principal sources of funding for the year as summarised at Note 2, page 14 and Note 3, page 15. These indicate a diverse range of funding including grant aid from Wormley and Turnford Big Local, grants from the Hertfordshire County Council, Hertfordshire Community Foundation and National Lottery and income from the hire of space at the Community Centre.

The charity intends to build on this funding diversity in future years.

BROXBOURNE BIG LOCAL

DIRECTORS' AND TRUSTEES' REPORT (Cont/d)

FOR THE YEAR ENDED 30TH JUNE 2024

Investment powers and policy

Under the Memorandum and Articles of Association, the charity has the power to make any investment which the trustees see fit. The trustees have considered the most appropriate policy for investing funds and have found that cash deposits meet their requirements to generate income.

Reserves policy

The trustees consider it prudent to maintain an adequate level of unrestricted reserves and have set this at the minimum level of three months expenditure.

The trustees consider that the Charity's reserves will enhance the services offered and provide financial security for the future. As at the year end accounts showed reserves of £367,850 (2023 - £103,680), of which £308,102 (2023 - £34,915) was restricted. The unrestricted funds not designated or invested in tangible fixed assets held by the charity are £44,224 (2023 - £63,650).

STRUCTURE, GOVERNANCE AND MANAGEMENT

Governing document

Broxbourne Big Local is registered under the Companies Act 1985 as a company limited by guarantee and not having a capital divided by shares.

The company was incorporated in 17th June 2019 and is a registered company constituted as a limited company under the Memorandum and Articles of Association. Broxbourne Big Local registered as a charity 24 January 2022. The company registration number is 12055143 and the Charity number is 1197644.

Recruitment and appointment of trustees

The Board of Trustees have power to appoint additional trustees as it considers fit to do so. The trustees in office in the year are set out on page 8.

Trustee induction and training

The trustees maintain a good working knowledge of charity law and best practice by regular reading of charity press articles and guidance produced by the Charity Commission and other Government and voluntary organisation advisory websites. New trustees are given copies of previous minutes and attend an induction session given by an experienced Trustee.

Organisation

The charity is organised so that the trustees meet regularly to manage its operational and finance affairs. The trustees are members from a variety of backgrounds with relevant professional experience.

The charity is grateful to Wormely and Turnford Big Local for deploying staff employed by its trusted partner Community Alliance Broxbourne and East Herts (CABAH) to provide excellent management, maintenance, booking, community development and promotional and marketing services at the Community Centre and in the wider community. The charity thanks the staff also.

Related parties

The charity does not have relationships with related parties and other charities and organisations with which it co-operates in pursuit of its charitable objectives.

4 of the trustees (Noelle Blackman, David Birley and Stephen Parker) are community partnership members of WTBL, this is because WTBL is the unincorporated organisation that started up BBL.

BROXBOURNE BIG LOCAL

DIRECTORS' AND TRUSTEES' REPORT (Cont/d)

FOR THE YEAR ENDED 30TH JUNE 2024

Risk Management

The trustees have identified the major risks to which the charity is exposed and believe that the systems in place are adequate to mitigate those risks.

Charitable and political donations

During the year the charity made no political or charitable donations.

REFERENCE AND ADMINISTRATIVE DETAILS

Company number: 12055143

Charity number: 1197644

Directors / Trustees

Noelle Jacqueline Blackman – Chair

David Michael Andrew Birley

Jeffrey John Allen – Appointed 03/08/2023

Stephen Andrew Parker

Registered Office: Wormley Community Centre Fairfield Drive, Wormley, Broxbourne, England, EN10 6DX

Bankers: CAF Bank Limited, 25 Kings Hill Avenue, Kings Hill, West Malling, Kent, M19 4JQ

Independent examiner: Samir Shah FCA, ATII

Chartered Accountants, Ramon Lee Ltd, 93 Tabernacle Street, London EC2A 4BA

Website: www.wtbiglocal.org.uk

Trustees' responsibility statement

The Trustees (who are also directors of Broxbourne Big Local for the purposes of company law) are responsible for preparing the Annual Report and the financial statements in accordance with applicable law and United Kingdom Accounting Standards (United Kingdom Generally Accepted Accounting Practice) including Financial Reporting Standard 102 "The Financial Reporting Standard applicable in the UK and Republic of Ireland"

Company law requires the trustees to prepare financial statements for each financial year which give a true and fair view of the state of affairs of the charitable company and of the incoming resources and application of resources, including the income and expenditure for that period. In preparing these financial statements, the trustees are required to:

- select suitable accounting policies and then apply them consistently;
- observe the methods and principles in the Charities SORP;
- make judgements and estimates that are reasonable and prudent;
- state whether applicable UK Accounting Standards have been followed, subject to any material departures disclosed and explained in the financial statements;
- prepare the financial statements on the going concern basis unless it is inappropriate to presume that the charitable company will continue in business.

The trustees are responsible for keeping proper accounting records that disclose with reasonable accuracy at any time the financial position of the charitable company and enable them to ensure that the financial statements comply with the Companies Act 2006. They are also responsible for safeguarding the assets of the charitable company and hence for taking reasonable steps for the prevention and detection of fraud and other irregularities.

The trustees are responsible for maintenance and integrity of the corporate and financial information included on the charitable company's website. Legislation in the United Kingdom governing the preparation and dissemination of financial statements may differ from legislation in other jurisdictions.

BROXBORNE BIG LOCAL
DIRECTORS' AND TRUSTEES' REPORT (Cont/d)
FOR THE YEAR ENDED 30TH JUNE 2024

This report has been prepared in accordance with the special provisions of Part 15 of the Companies Act 2006 relating to small companies.

Approved by order of the board of trustees on 17th February 2025 and signed on its behalf by:

NOELLE BLACKMAN (CHAIR)

Noelle Blackman

INDEPENDENT EXAMINER'S REPORT TO THE TRUSTEES OF BROXBOURNE BIG LOCAL

I report to the trustees on my examination of the financial statements of Broxbourne Big Local (the charitable company) for the year ended 30 June 2024.

This report is made solely to the charity's trustees, as a body, in accordance with the Charities Act 2011. My work has been undertaken so that I might state to the charity's trustees those matters I am required to state to them in an independent examiner's report and for no other purpose. To the fullest extent permitted by law, I do not accept or assume responsibility to anyone other than the charity and the charity's trustees as a body, for my Independent Examination, for this report, or for the opinions I have formed.

Responsibilities and basis of report

As the trustees of the charitable company (and also its directors for the purposes of company law) you are responsible for the preparation of the financial statements in accordance with the requirements of the Companies Act 2006 (the 2006 Act).

Having satisfied myself that the financial statements of the charitable company are not required to be audited under Part 16 of the 2006 Act and are eligible for independent examination, I report in respect of my examination of the charitable company's financial statements carried out under section 145 of the Charities Act 2011 (the 2011 Act). In carrying out my examination I have followed all the applicable Directions given by the Charity Commission under section 145(5)(b) of the 2011 Act.

Independent examiner's statement

Since the charity's gross income exceeded £250,000 your examiner must be a member of a body listed in section 145 of the 2011 Act. I confirm that I am qualified to undertake the examination because I am a member of ICAEW, which is one of the listed bodies.

I have completed my examination. I confirm that no matters have come to my attention in connection with the examination giving me cause to believe that in any material respect:

1. accounting records were not kept in respect of the charitable company as required by section 386 of the 2006 Act; or
2. the financial statements do not accord with those records; or
3. the financial statements do not comply with the accounting requirements of section 396 of the 2006 Act other than any requirement that the accounts give a true and fair view which is not a matter considered as part of an independent examination; or
4. the financial statements have not been prepared in accordance with the methods and principles of the Statement of Recommended Practice for accounting and reporting by charities applicable to charities preparing their accounts in accordance with the Financial Reporting Standard applicable in the UK and Republic of Ireland (FRS 102).

I have no concerns and have come across no other matters in connection with the examination to which attention should be drawn in this report in order to enable a proper understanding of the financial statements to be reached.



Samir Shah FCA, ATII
Ramon Lee Ltd
Chartered Accountants
93 Tabernacle Street
London
EC2A 4BA

Dated:

BROXBOURNE BIG LOCAL
STATEMENT OF FINANCIAL ACTIVITIES
FOR THE YEAR ENDED 30TH JUNE 2024
SUMMARY INCOME AND EXPENDITURE ACCOUNT

	Notes	Unrestricted Funds £	Restricted Funds £	Total 2024 £	Total 2023 £
Income					
Grants and donations	2	-	346,174	346,174	112,079
Income from charitable activities	3	59,566	26,220	85,786	74,514
Investment income	4	236	-	236	129
Total income		59,802	372,394	432,196	186,722
Expenditure					
Cost of raising funds	5	7,952	5,035	12,987	5,639
Expenditure on charitable activities	5	60,867	94,172	155,039	141,249
Total expenditure		68,819	99,207	168,026	146,888
Net income / (expenditure)		(9,017)	273,187	264,170	39,834
Transfer between funds		-	-	-	-
Net movement in funds		(9,017)	273,187	264,170	39,834
<i>Reconciliation of funds</i>					
Total funds, brought forward		68,765	34,915	103,680	63,846
Total funds, carried forward		59,748	308,102	367,850	103,680

CONTINUING OPERATIONS

None of the company's activities were acquired or discontinued during the above two financial periods.

TOTAL RECOGNISED GAINS AND LOSSES

The company has no recognised gains or losses other than the above movement in funds for the above two financial periods.

The notes on pages 12 to 20 form part of these accounts.

BROXBOURNE BIG LOCAL

BALANCE SHEET AS AT 30TH JUNE 2024

	Notes	2024		2023	
		£	£	£	£
Fixed assets					
Tangible assets	10		103,219		20,755
Current assets					
Debtors	11	11,996		28,492	
Cash at bank and in hand		286,077		81,655	
		298,073		110,147	
Liabilities					
Creditors falling due with in one year	12	(33,442)		(27,222)	
Net current assets			264,631		82,925
Net assets			367,850		103,680
Funds					
Unrestricted funds:	13		59,748		68,765
Restricted funds	13		308,102		34,915
Total funds			367,850		103,680

In preparing these financial statements:

For the financial period ended 30th June 2024 the company was entitled to exemption from audit under section 477 Companies Act 2006. No member of the company has deposited a notice, pursuant to section 476, requiring an audit of these financial statements under the requirements of the Companies Act 2006.

The directors acknowledge their responsibilities for:

- a) ensuring that the charitable company keeps accounting records that comply with Sections 386 and 387 of the Companies Act 2006 and
- b) preparing accounts which give a true and fair view of the state of affairs of the charitable company as at the end of each financial year and of its surplus or deficit for each financial year in accordance with the requirements of Sections 394 and 395 and which otherwise comply with the requirements of the Companies Act 2006 relating to accounts, so far as applicable to the charitable company.

These financial statements have been prepared in accordance with the provisions applicable to companies subject to the small companies' regime within Part 15 of the Companies Act 2006.

These financial statements were approved by the Board of Directors and Trustees on 17th February 2025 and were signed on its behalf by:



NOELLE BLACKMAN (CHAIR)

Company number: 12055143

The notes on pages 12 to 20 form part of these accounts.

BROXBOURNE BIG LOCAL

NOTES TO THE ACCOUNTS

FOR THE YEAR ENDED 30TH JUNE 2024

1. ACCOUNTING POLICIES

1.1 Basis of preparation of accounts

The financial statements have been prepared in accordance with the charitable company's Memorandum and Articles of Association, the Companies Act 2006, FRS 102 "The Financial Reporting Standard applicable in the UK and Republic of Ireland" ("FRS 102") and the Charities SORP "Accounting and Reporting by Charities: Statement of Recommended Practice applicable to charities preparing their accounts in accordance with the Financial Reporting Standard applicable in the UK and Republic of Ireland (FRS 102)" (effective 1 January 2019).

Broxbourne Big Local meets the definition of a public benefit entity under FRS 102.

The financial statements are prepared in sterling, which is the functional currency of the Charity. Monetary amounts in these financial statements are rounded to the nearest £.

The accounts (financial statements) have been prepared under the historical cost convention with items recognised at cost or transaction value unless otherwise stated in the relevant note(s) to these accounts.

1.2 Preparation of accounts on a going concern basis

The Charity's Financial Statements show net surplus of £264,170 for the year and free reserves of £44,224. The trustees are of the view that these results have secured the immediate future of the Charity for the next 12 to 18 months and on this basis the Charity is a going concern.

1.3 Income recognition

Grant income

Grants are credited to the SOFA when the charity is entitled to the funds. Income is only deferred where there are time constraints imposed by the donor or if the funding is performance related.

Where entitlement to grants receivable is dependent upon fulfilment of conditions within the charity's control, the income is recognised when there is sufficient evidence that conditions will be met.

Grants supporting the core activities of the charity and with no specific restrictions placed upon their use are included within donations and legacies. Grants that have specific restrictions placed upon their use are included within income from charitable activities.

Capital grants for the purchase of fixed assets are credited to restricted incoming resources on the earlier date of when they are received or receivable. Depreciation on the related fixed assets is charged against the restricted fund.

Donations and legacies

Donations are recognised in the period in which they are received. Legacy income is recognised when the charity's entitlement is judged to be probable and where the amount can be reliably measured.

Contract income

Income from charitable activities include income recognised as earned (as the related goods and services are provided) under contract.

Room hire and service charge income

Room hire and service charge income are credited to income in the year in which they are receivable.

Investment income

Investment income is included when receivable.

BROXBOURNE BIG LOCAL

NOTES TO THE ACCOUNTS

FOR THE YEAR ENDED 30TH JUNE 2024

1.4 Volunteers and donated services and facilities

Donated professional services and donated facilities are recognised as income when the charity has control over the item, any conditions associated with the donated item have been met, the receipt of economic benefit from the use by the charity of the item is probable and that economic benefit can be measured reliably. In accordance with the Charities SORP (FRS 102), the general volunteer time are not recognised and refers to the trustees' annual report for more information about their contribution.

On receipt, donated professional services and donated facilities are recognised on the basis of the value of the gift to the charity which is the amount the charity would have been willing to pay to obtain services or facilities of equivalent economic benefit on the open market; a corresponding amount is then recognised in expenditure in the period of receipt.

1.5 Expenditure recognition and Irrecoverable VAT

Expenditure is recognised once there is a legal or constructive obligation to make a payment to a third party, it is probable that settlement will be required and the amount of the obligation can be measured reliably.

Expenditure is classified under the following activity headings:

- (a) Cost of raising funds comprises costs of seeking grants and donations and their associated support costs.
- (b) Expenditure on charitable activities include expenditure associated with the main objectives of the Charity and include both direct costs and their associated support costs.

Irrecoverable VAT is charged as a cost against the activity for which the expenditure was incurred.

1.6 Allocation of support costs

Support costs are those functions that assist the work of the charity but do not directly undertake charitable activities. Support costs include back-office costs, and governance costs which support the Charity's programmes and activities. These costs have been allocated between cost of raising funds and expenditure on charitable activities. The basis on which support costs have been allocated are set out in note 6.

1.7 Funds structure

The general fund comprises those monies, which may be used toward meeting the charitable objectives of the charity at the discretion of the Management Board.

The restricted funds are monies raised for, and their use restricted to, a specific purpose or donations subject to donor imposed conditions.

1.8 Tangible fixed assets and depreciation

Tangible fixed assets are stated at cost less depreciation. Individual fixed assets costing £500 or more are capitalised at cost.

Depreciation is provided at rates calculated to write off the cost or valuation of fixed assets, less their estimated residual value, over their expected useful lives on the following bases.

Leasehold land and building	- Over 50 years
Fixtures, fittings & equipment	- 20% on cost

1.9 Debtors

Trade and other debtors are recognised at the settlement amount due after any trade discount offered. Prepayments are valued at the amount prepaid net of any trade discounts due.

1.10 Cash at bank and in hand

Cash at bank and in hand includes cash and short term cash deposits.

BROXBOURNE BIG LOCAL

NOTES TO THE ACCOUNTS

FOR THE YEAR ENDED 30TH JUNE 2024

1.11 Creditors and provisions

Creditors and provisions are recognised where the charity has a present obligation resulting from a past event that will probably result in the transfer of funds to a third party and the amount due to settle the obligation can be measured or estimated reliably. Creditors and provisions are normally recognised at their settlement amount after allowing for any trade discounts due.

1.12 Financial instruments

The Trust only has financial assets and financial liabilities of a kind that qualify as basic financial instruments. Basic financial instruments are initially recognised at transaction value and subsequently measured at their settlement value with the exception of bank loans which are subsequently measured at amortised cost using the effective interest method.

1.13 Taxation

The Charity is a registered charity and, therefore, is not liable for Income Tax or Corporation Tax on income derived from its charitable activities, as it falls within the various exemptions available to registered charities.

1.14 Judgement and key sources of estimation uncertainty

In the application of the charity's accounting policies, the charity is required to make judgements, estimates and assumptions about the carrying amount of assets and liabilities that are not readily apparent from other sources. The estimates and associated assumptions are based on historical experience and other factors that are considered to be relevant. Actual results may differ from these estimates.

The estimates and underlying assumptions are reviewed on an ongoing basis. Revisions to accounting estimates are recognised in the period in which the estimate is revised where the revision affects only that period, or in the period of the revision and future periods where the revision affects both current and future periods.

1.15 Cash flow statement

The charity qualifies as a small charity and advantage has been taken of the exemption provided by SORP (FRS 102) (Bulletin 1 published on 2 February 2016). The charity opted to and have, therefore, not included a cash flow statement in these financial statements.

2. GRANTS AND DONATIONS

	Unrestricted Funds £	Restricted Funds £	2024 £	2023 £
Wormley & Turnford Big Local via Community Alliance Broxbourne and East Herts (Premises & Transition)	-	24,391	24,391	60,900
Wormley & Turnford Big Local via Community Alliance Broxbourne and East Herts (Building Phrase 1)	-	165,000	165,000	-
Department for Levelling Up, Housing and Communities (Building Phrase 1)	-	99,000	99,000	-
Broxbourne Council	-	-	-	1,000
Donations	-	-	-	124
Wormley & Turnford Big Local via Community Alliance Broxbourne and East Herts - donation in kind	-	57,783	57,783	50,055
	-	346,174	346,174	112,079
2023	124	111,955	-	112,079

BROXBOURNE BIG LOCAL

NOTES TO THE ACCOUNTS

FOR THE YEAR ENDED 30TH JUNE 2024

The charity is grateful to Wormley and Turnford Big Local for deploying staff employed by its trusted partner Community Alliance Broxbourne and East Herts (CABAH) to provide management, maintenance, booking, community development and promotional and marketing services at the Community Centre and in the wider community. The value placed by CABAH for these services are recognised within grants and donations as income and a corresponding charge is included within direct and support costs.

3. INCOME FROM CHARITABLE ACTIVITIES

	Unrestricted Funds £	Restricted Funds £	2024 £	2023 £
Community projects: <i>Grants and contracts</i>				
Broxbourne Council	-	-	-	1,200
Communities 1st	-	1,500	1,500	-
Hertfordshire Community Foundation	-	5,000	5,000	8,128
Hertfordshire County Council	-	500	500	14,260
National Lottery	-	19,220	19,220	-
	-	26,220	26,220	23,588
Space: Premises hire	59,566	-	59,566	50,926
	59,566	-	59,566	50,926
	59,566	26,220	85,786	74,514
2023	50,926	23,588	-	74,514

4. INVESTMENT INCOME

	Unrestricted Funds £	Restricted Funds £	2024 £	2023 £
Interest on cash deposits	236	-	236	129
	236	-	236	129
2023	129	-	-	129

BROXBOURNE BIG LOCAL

NOTES TO THE ACCOUNTS (Cont'd)

FOR THE YEAR ENDED 30TH JUNE 2024

5. ANALYSIS OF EXPENDITURE

	Raising funds	Community projects	Space	2024	2023
	£	£	£	£	£
Rates	-	-	1,152	1,152	1,078
Utilities	-	-	12,438	12,438	13,323
Cleaning	-	-	2,965	2,965	3,302
Repairs and maintenance	-	144	7,671	7,815	11,872
Premises insurance	-	-	1,534	1,534	856
Gardening expenses	-	703	38	741	2,134
Staff cost (Seconded)	-	-	6,983	6,983	-
Sessional staff	-	2,026	6,902	8,928	11,177
Consumables	-	250	166	416	871
Depreciation	-	-	1,614	1,614	592
Legal and professional costs	5,035	-	2,041	7,076	24,820
Subscriptions and licences	-	-	1,698	1,698	424
Other direct cost	-	10,862	922	11,784	10,954
Support costs (Note 6)	7,677	21,323	70,325	99,325	64,405
Governance costs (Note 6)	275	764	2,518	3,557	1,080
	12,987	36,072	118,967	168,026	146,888
2023	5,639	32,665	108,584	-	146,888

Of the £168,026 expenditure in 2024 (2023 - £146,888), £68,819 was charged to unrestricted funds (2023 - £26,851) and £99,207 to restricted funds (2023 - £120,037).

6. ANALYSIS OF SUPPORT AND GOVERNANCE COSTS

The charity initially identifies the costs of its support functions. It then identifies those costs which relate to the governance function. Governance costs and other support costs are apportioned separately between charity's key activity undertaken (see note 5) in the year. All the general support and governance costs have been apportioned to the various charitable activities on the basis of direct costs allocated to each activity.

	Support costs	Governance costs	Total 2024	Total 2023
	£	£	£	£
Management and administration staff (seconded)	81,247	-	81,247	50,055
Premises and equipment costs	4,020	-	4,020	4,283
Communication and IT Costs	1,651	-	1,651	902
Legal and professional costs	10,860	617	11,477	8,756
Sundry expenses	1,547	-	1,547	409
Independent examination fees	-	2,940	2,940	1,080
	99,325	3,557	102,882	65,485
2023	64,405	1,080	-	65,485

BROXBOURNE BIG LOCAL

NOTES TO THE ACCOUNTS (Cont/d)

FOR THE YEAR ENDED 30TH JUNE 2024

7. NET INCOME / (EXPENDITURE) FOR THE YEAR

	2024	2023
	£	£
Net movement in funds is shown after charging:		
Depreciation on tangible fixed assets	1,614	658
Independent examiner's fees	2,940	1,080
	<u>2,940</u>	<u>1,080</u>

8. ANALYSIS OF STAFF COSTS, TRUSTEES REMUNERATION AND EXPENSES, AND COST OF KEY MANAGEMENT PERSONNEL

No staff were employed during the year and the preceding year.

The Community Alliance Broxbourne and East Herts provided seconded staff to the charity totalling £88,230 (2023 – £50,055).

The key management personnel of the charity comprise the Board of Trustees.

No trustees have received any remuneration from the charity during the year (2023 - £Nil). No trustees have received any other benefits from the charity during the year (2023 - £Nil). None of the trustees received reimbursed expenses during the year (2023 - £Nil).

9. STAFF NUMBERS

The average monthly number of persons employed by the charity during the year was Nil (2023 – Nil).

10. TANGIBLE FIXED ASSETS

			2024	2023
			£	£
NET BOOK VALUES				
Long Leasehold land & building			96,597	15,640
Fixtures, fittings & equipment			6,622	5,115
			<u>103,219</u>	<u>20,755</u>
MOVEMENTS IN YEAR				
Cost or valuation	Opening Balances	Additions	Disposals	Closing Balances
	£	£	£	£
Long Leasehold land & building	16,292	81,283	-	97,575
Fixtures, fittings & equipment	5,447	2,795	-	8,242
	<u>21,739</u>	<u>84,078</u>	<u>-</u>	<u>105,817</u>
Depreciation	Opening Balances	Charge For Year	Disposals	Closing Balances
	£	£	£	£
Long Leasehold land & building	652	326	-	978
Fixtures, fittings & equipment	332	1,288	-	1,620
	<u>984</u>	<u>1,614</u>	<u>-</u>	<u>2,598</u>

The long leasehold property represents the land and building Wormley Community Centre and the car park. The property was leased to Broxbourne Big Local from The Council of the Borough of Broxbourne on a 999-year lease and the charity is committed to running the property as a community centre.

BROXBOURNE BIG LOCAL

NOTES TO THE ACCOUNTS (Cont/d)

FOR THE YEAR ENDED 30TH JUNE 2024

11. DEBTORS

	Total 2024 £	Total 2023 £
Grant and rental debtors	5,516	26,868
Prepayments	6,480	1,624
	<u>11,996</u>	<u>28,492</u>

12. CREDITORS: amounts falling due within one year

	Total 2024 £	Total 2023 £
Trade creditors	17,710	11,487
Other creditors	5,386	2,350
Accruals	4,280	5,433
Deferred income (note 15)	6,068	7,952
	<u>33,442</u>	<u>27,222</u>

13. MOVEMENT IN FUNDS

	Balance at 01.07.2023 £	Income £	Expenditure £	Transfers £	Balance at 30.06.2024 £
Restricted funds:					
Wormley & Turnford Big Local via Community Alliance Broxbourne and Wormley & Turnford Big Local via Community Alliance Broxbourne and East Herts (Building Phrase 1)	11,180	82,174	83,177	(10,177)	-
Department for Levelling Up, Housing and Communities (Building Phrase 1)	-	165,000	-	(62,204)	102,796
Communities 1st	-	99,000	-	-	99,000
Hertfordshire Community Foundation	-	1,500	1,500	-	-
Hertfordshire County Council	7,009	5,000	664	-	4,336
National Lottery	-	500	7,509	-	-
National Lottery Awards for All	-	19,220	4,945	-	14,275
Building Improvements	1,086	-	1,086	-	-
	15,640	-	326	72,381	87,695
Total restricted funds	<u>34,915</u>	<u>372,394</u>	<u>99,207</u>	-	<u>308,102</u>
Unrestricted funds	68,765	59,802	68,819	-	69,748
Total funds	<u>103,680</u>	<u>432,196</u>	<u>168,026</u>	-	<u>367,850</u>

BROXBOURNE BIG LOCAL

NOTES TO THE ACCOUNTS (Cont/d)

FOR THE YEAR ENDED 30TH JUNE 2024

Movement in funds – previous year

	Balance at 01.07.2022	Income	Expenditure	Transfers	Balance at 30.06.2023
	£	£	£	£	£
Restricted funds:					
Wormley & Turnford Big Local via CVS for Broxbourne & East Herts	1,455	110,955	98,980	(2,250)	11,180
Arnold Clark Automation	1,000	-	1,000	-	-
Broxbourne Council	-	2,200	2,200	-	-
Hertfordshire Community Foundation	-	8,128	8,128	-	-
Hertfordshire County Council	-	14,260	7,251	-	7,009
National Lottery Awards for All	6,435	-	2,152	(3,197)	1,086
Building improvements	15,966	-	326	-	15,640
Total restricted funds	24,856	135,543	120,037	(5,447)	34,915
Unrestricted funds	38,990	51,179	26,851	5,447	68,765
Total funds	63,846	186,722	146,888	-	103,680

Description, nature and purpose of restricted funds:

- Wormley & Turnford Big Local – Reopening, refresh and refurbishment of the Community Centre and running costs of the Community Centre.
- Department for Levelling Up, Housing and Communities (Building Phrase 1) – For the extension and refurbishment of the building.
- Communities 1st - Welcome Space as part of the "Welcome Space Network" project in Hertfordshire and Bedfordshire, UK. To provide support and resources for vulnerable and isolated individuals, focusing on community engagement, energy support, benefits advice, and digital inclusion programmes.
- Broxbourne Council – Funding of £1,200 for Healthy Cookery classes on a budget and £1,000 for the purchase of furniture for the Community Centre.
- Hertfordshire Community Foundation – Household Support Grant enabled BBL to provide a warm space breakfast club at Wormley Community Centre.
- Hertfordshire County Council – Providing positive activities free of charge in the local area, in a trusted safe space for teenagers.
- National Lottery - To improve facilities and service provision in Wormley and Turnford in order to address anti-social behaviour and provide a safe space for local young residents
- National Lottery Awards for All – New garden shed, benches and tools for allotment group.
- Building improvements – Community centre building improvement costs. Balance carried forward represents undepreciated costs.

Description, nature and purpose of unrestricted funds:

Unrestricted funds: General fund represents funds available to spend at the discretion of the trustees.

14. ANALYSIS OF FUND BALANCES BETWEEN NET ASSETS

	Unrestricted Funds	Restricted Funds	Total 2024
	£	£	£
Tangible fixed assets	15,524	87,695	103,219
Net current assets	44,224	220,407	264,631
	59,748	308,102	367,850

BROXBOURNE BIG LOCAL

NOTES TO THE ACCOUNTS (Cont/d)

FOR THE YEAR ENDED 30TH JUNE 2024

Analysis of fund balances between net assets – previous year

	Unrestricted Funds £	Restricted Funds £	Total 2023 £
Tangible fixed assets	5,115	15,640	20,755
Net current assets	63,650	19,275	82,925
	<u>68,765</u>	<u>34,915</u>	<u>103,680</u>

15. DEFERRED INCOME

	2024 £	2023 £
Balance brought forward	7,952	5,463
Amounts released from previous periods	(7,952)	(5,463)
Amounts deferred in the year	6,066	7,952
Balance carried forward	<u>6,066</u>	<u>7,952</u>

Deferred income represents £6,066 premises hire income received in advance for 2024/2025.

16. SHARE CAPITAL

The company is constituted as a company limited by guarantee and does not have a share capital divided by shares.

17. RELATED PARTY TRANSACTIONS

Following related party transactions were incurred during the year and preceding year with close relatives of the trustee Noelle Blackman. The trustees obtained three quotes, and Noelle Blackman did not participate in the decisions relating to these transactions:

- Architectural services £13,275 (2023 - £9,839) provided by a company controlled by a close relative.

Four of the trustees (Noelle Blackman, David Birley, Stephen Parker and Jeffrey Allen) are community partnership members of Wormley & Turnford Big Local (WTBL), the WTBL is the unincorporated organisation that started up Broxbourne Big Local. The WTBL deployed staff employed by its trusted partner Community Alliance Broxbourne and East Herts (CABAH) to provide management, maintenance, booking, community development and promotional and marketing services at the Community Centre and in the wider community. The value placed by CABAH for this donation in kind is £57,783 (2023 - £50,055). The WTBL gave the charity grant funding of £189,391 (2023 - £110,955).

18. CAPITAL COMMITMENTS

The charity's board of trustees have approved capital spending of £300,796 for the extension and refurbishment of the Community Centre.

BROXBOURNE BIG LOCAL

England & Wales - Charity number 1197644

Accounts



DIRECTORS' AND TRUSTEES' REPORT AND ACCOUNTS

FOR THE YEAR ENDED 30TH JUNE 2023

Charity number: 1197644

Company number: 12055143

BROXBOURNE BIG LOCAL

CONTENTS

	<u>Page</u>
Directors' and Trustees' Report	2 – 9
Report of the Independent Examiner	10
Statement of Financial Activities	11
Balance Sheet	12
Notes to the Accounts	13 – 21

BROXBOURNE BIG LOCAL

DIRECTORS' AND TRUSTEES' REPORT

FOR THE YEAR ENDED 30TH JUNE 2023

The trustees who are also directors of the charity for the purposes of the Companies Act 2006, present their report with the financial statements of the charity for the year ended 30 June 2023. The trustees have adopted the provisions of Charities Act 2011, the Companies Act 2006, the Memorandum and Articles of Association, and Accounting and Reporting by Charities: Statement of Recommended Practice applicable to charities preparing their financial statements in accordance with the Financial Reporting Standard applicable in the UK and Republic of Ireland (FRS 102) (effective 1 January 2019).

OUR PURPOSE AND ACTIVITIES

The objects of the charity are: -

- To develop the capacity and skills of the members of socially and economically disadvantaged community of Broxbourne in such a way that they are better able to identify and help meet, their needs and to participate fully in society.
- To promote for the benefit of the inhabitants of Broxbourne and the surrounding area the provision of community facilities for recreation or other leisure time occupation of individuals who have need of such facilities by reason of their youth, age, infirmity, or disablement, financial hardship, or social and economic circumstances or for the public at large by associating together with the said inhabitants, and the statutory authorities, voluntary and other organisation in the interests of social welfare and with the object of improving the condition of life of the said inhabitants.

Achievements and Performance

Trustee Report Draft

Achievements and performance

The charity Broxbourne Big Local (BBL) is the legacy charity formed by Wormley and Turnford Big Local (WTBL). A key focus currently is the redevelopment of the Wormley Community Centre while also developing initiatives for the benefit of local communities in the Borough of Broxbourne. With support from WTBL staff and their roles in project planning, impact reporting, marketing, and communications, the charity has successfully gathered information that has supported funding opportunities for a range of local community activities. The overarching mission is to create a sustainable, empowered, and self-reliant community. The goal has been to save the community centre from demolition and secure a long-term lease which has been achieved and to refurbish the centre making it financially sustainable so that it can be used as a hub for community initiatives and support local businesses. In response to the current economic crisis, the charity's focus has been on seeking financial sustainability and continued support for local communities.

Meticulously documented impact reporting within WTBL groups has identified those in need of support, leading to collaborations and partnerships with organisations and charities who can work with BBL to provide the services that will meet the identified needs. These collaborations have enhanced outreach, addressed new challenges, and kept the charity informed about the current effects of the economic crisis. These partnerships have revealed various forms of deprivation, prompting direct engagement with communities in need with a more detailed understanding of how to better support residents and to sustain this support in the long term.

For example, The Big Local Breakfast Club:



BROXBOURNE BIG LOCAL

DIRECTORS' AND TRUSTEES' REPORT

FOR THE YEAR ENDED 30TH JUNE 2023

The **Breakfast Club** was introduced in response to the pressing issue of food poverty, as highlighted by local authorities' findings. It was through these interactions that we learned about the alarming fact that 'Broxbourne has one of the highest levels of residents at risk of food poverty in Hertfordshire.' This highlights the critical need for our Breakfast Club in the local community

Funding from Hertfordshire Household Support Grant enabled us to provide a breakfast club at Wormley Community Centre, in support of our local community, by providing a healthy breakfast to those who may have to skip breakfast on their way to work or school and by providing a warm hub space for those who suffer from social isolation.

Questionnaire feedback responses

Q, Please explain how the breakfast club has benefited you these past few months?

A, "I lost my job 2 years ago. I don't have any income. Breakfast Club started soon after I ran out of my savings."

A, "It brings people and the community together. I am short of money but I know I can have a breakfast."

A, "Meeting others at breakfast and helping others with their problems."

A, "Handy when I'm unwell to have somewhere to grab a bite to eat".

A, "I've made new friends".

Staff observations

Having the breakfast club has also provided the opportunity for the attendees to learn about all the other projects, events and sessions at the community centre. They have been able to attend activities like the family social event parties, coach trips and lunch and learn sessions, all of which are tailored to improve the well-being of the Wormley/Turnford community.

Q How does not having the breakfast club available to you impact you personally?

A, "I'll have nothing to eat if there is no alternative. If there is the option to do so I would volunteer myself to help so that I could pay for my own breakfast.

A, "I will miss the company".

A, "It will be a great loss to the community".

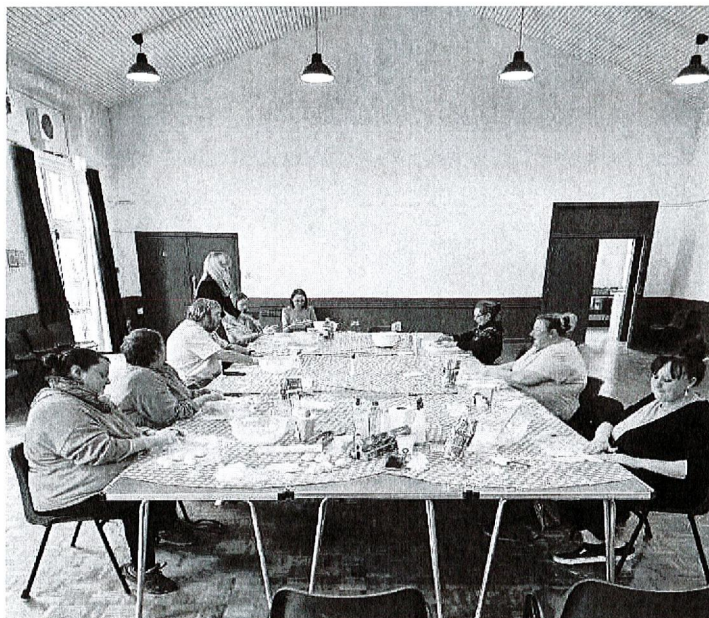
A, "This is a great place to socialise, if it stops I'll have no one to talk to".

A, "I'll have nowhere to go in the mornings".

WTBL Staff observation

WTBL staff have observed the breakfast club's regular users and have learned that there are those who are vulnerable and close to homelessness and can't afford to eat, those suffering with their mental health and from social isolation, and those with medical conditions that limits their daily activities.

The charity also received funding from **Hertfordshire County Council's Food Aid Network** for a project aimed at offering cost-effective and energy-efficient support learning courses. These courses were designed for residents at risk of food poverty, providing valuable knowledge on budget-friendly and energy-efficient shopping, cooking, and meal preparation. The initiative extended its support to individuals with food aversions, ensuring inclusivity within the community.



BROXBOURNE BIG LOCAL

DIRECTORS' AND TRUSTEES' REPORT

FOR THE YEAR ENDED 30TH JUNE 2023

This course aligns with BBL's approach by empowering cohesive and involved communities. These initiatives aim to empower local communities, providing opportunities to enhance welfare and well-being for those affected by the area's issues and the current economic crisis by:

- Learning new skills,
- Utilising their existing skills to assist others,
- Connecting with new people and establishing useful contacts,
- Improve their mental and physical well-being.

Happy Summer Camp - During the four weeks of July and August, we organised eight summer camp sessions as part of our Happy Summer Camp initiative. This free summer holiday camp was specifically designed for families facing financial challenges or enrolled in the free school meals plan, generously funded by **Herts Sports Partnership**.

Our camp attracted an average of 20 individual children, with over 100 attendances. The main objective was to offer children from less financially stable backgrounds the opportunity to engage in activities they might not have experienced before, allowing them to learn new skills and discover their potential in various activities.

To facilitate this, we collaborated with local small businesses, to conduct the activities. The children were treated to:

- Music lessons from The Music Lab School, including learning instruments such as bucket drums and ukulele, as well as engaging in song writing. The WCC piano was also utilised for performing the songs they had written.
- Singing, acting, and dance lessons offered by Make Believe Performing Arts School.
- Cricket sessions with a professional cricket coach.
- Cooking lessons where they created pizzas, wraps, and cereal bars. A school dinner lady was hired to cook and provide their lunches at lunchtime.

A notable outcome of our collaboration with The Music Lab was the identification of two children with exceptional potential. Both were offered free term scholarships with The Music Lab.



BROXBOURNE BIG LOCAL

DIRECTORS' AND TRUSTEES' REPORT

FOR THE YEAR ENDED 30TH JUNE 2023

Despite the charity's successes in empowering communities through connection, education, and support projects, there was a noted gap in engaging local teenagers, particularly evident in the lack of appeal of the clubs held in the local area for this demographic. The impact reporting brought attention to this issue. Valuable information from Herts County Council highlighted that the pandemic had presented significant challenges for many young people, impacting their informal social interactions and potentially contributing to increased anxiety levels. Recognising this, the charity sought to address the gap by actively understanding the needs and preferences of local teenagers.

In response, armed with this knowledge, the charity sought funding for a year to work in partnership with DJ & MC Academy. Known for its ethos and values, the club was selected as it aligns with BBL's values and addresses the issues at hand. The academy consists of experienced youth workers who are passionate about empowering young individuals, building their confidence, and promoting positive relationships. The academy specialises in Rapping, Lyric Writing, Radio Presenting, and DJ'ing, and has a track record of successfully turning around the lives of teenagers and reducing gang violence in London. The initiative aimed to actively engage and support local teenagers, addressing the previously identified gap and fostering a sense of connection and well-being among this demographic.



Quote from the DJ&MC Academy CEO

We have started a youth provision with the Big Local at Wormley community centre, the project we have been running is a DJ'ing, radio presenting, singing and music production workshop every week on a Wednesday from 4-30-6-30pm. It started with no young people and to date we have had over 23 young people attend, they really look forward to the program and have said its really benefitted them and they are usually waiting for the team from 4pm. Its a very big estate and there isn't much going on there so the community hub is the heart and soul of the place. I didn't even know it existed before I visited Zoe and the team. It has taken us some time to gain the trust of the young people we have a core group of 8-10 who attend every week and never miss a workshop and through word of mouth and the consistency of project more young people have attended even after loitering outside for months they are now coming in and getting involved which shows the true dedication and hard work of the team, but also how much the young people are anxious and low in confidence to freely walk in from the start. Feedback from the young people has been truly inspiring they have said it's something they look forward to every week, they have made friends, they have learnt music skills, life skills, increased their confidence and self-esteem and have increased communications skills. We have also put on a showcase and invited parents and peers and the young people would have never imagined they

BROXBOURNE BIG LOCAL
DIRECTORS' AND TRUSTEES' REPORT
FOR THE YEAR ENDED 30TH JUNE 2023

would perform and sing to a crowd and DJ and run the entire show and they successfully did this with ease. I hope this will be a continuous project and they really need it. They have not only inspired and are proud of themselves we have really got to know the young people at the Centre and are very proud of their hard work and dedication and really enjoy coming to teach them every week and see them grow. There is still work to do as more young people are joining the project so it will continue to grow and give them something positive to do.



Public benefit statement

In shaping our objectives for the year and planning our activities, the trustees have considered the Charity Commission's guidance on public benefit, including the guidance 'public benefit: running a charity (PD2)'. The achievements and activities above demonstrate the public benefit arising through the Charity's activities.

FINANCIAL REVIEW

The Statement of Financial Activities showed net income of £39,834 (2022 - £63,850) for the year and reserves stand at £103,680 (2022 - £63,846). The financial position at the year revealed by the Balance Sheet shows net current assets or working capital of £82,925 (2022 - £47,880). The net book value of fixed assets held, all of which are used directly for charitable purposes, amounted to £20,755 (2022 - £15,966).

Principal funding sources

The principal sources of funding for the year as summarised at Note 2, page 15 and Note 3, page 16. These indicate a diverse range of funding including grant aid from Wormley and Turnford Big Local, grants from the Broxbourne Council, Hertfordshire County Council, and Hertfordshire Community Foundation and income from the hire of space at the Community Centre.

The charity intends to build on this funding diversity in future years.

BROXBOURNE BIG LOCAL
DIRECTORS' AND TRUSTEES' REPORT (Cont/d)
FOR THE YEAR ENDED 30TH JUNE 2023

Investment powers and policy

Under the Memorandum and Articles of Association, the charity has the power to make any investment which the trustees see fit. The trustees have considered the most appropriate policy for investing funds and have found that cash deposits meet their requirements to generate income.

Reserves policy

The trustees consider it prudent to maintain an adequate level of unrestricted reserves and have set this at the minimum level of three months expenditure.

The trustees consider that the Charity's reserves will enhance the services offered and provide financial security for the future. As at the year end accounts showed reserves of £103,680 (2022 - £63,846), of which £34,915 (2022 - £24,856) was restricted. The unrestricted funds not designated or invested in tangible fixed assets held by the charity are £63,650 (2022 - £38,990).

FUTURE PLANS AND DEVELOPMENTS

The main focus for the year ahead will be to secure funding for phase one of the refurbishment of the community centre. This will provide a larger commercial kitchen, upgraded toilets and, and a larger foyer. This will enable BBL to secure a hospitality business to take on the lease to run a cafe from the community centre. This is an important part of our business strategy to provide core income in order to finance staff.

STRUCTURE, GOVERNANCE AND MANAGEMENT

Governing document

Broxbourne Big Local is registered under the Companies Act 1985 as a company limited by guarantee and not having a capital divided by shares.

The company was incorporated in 17th June 2019 and is a registered company constituted as a limited company under the Memorandum and Articles of Association. Broxbourne Big Local registered as a charity 24 January 2022. The company registration number is 12055143 and the Charity number is 1197644.

Recruitment and appointment of trustees

The Board of Trustees have power to appoint additional trustees as it considers fit to do so. The trustees in office in the year are set out on page 8.

Organisation

The charity is organised so that the trustees meet regularly to manage its operational and finance affairs. The trustees are members from a variety of backgrounds with relevant professional experience.

The charity is grateful to Wormely and Turnford Big Local for deploying staff employed by its trusted partner Community Alliance Broxbourne and East Herts (CABAH) to provide excellent management, maintenance, booking, community development and promotional and marketing services at the Community Centre and in the wider community. The charity thanks the staff also.

Related parties

The charity does not have relationships with related parties and other charities and organisations with which it co-operates in pursuit of its charitable objectives.

4 of the trustees (Noelle Blackman, David Birley and Stephen Parker) are community partnership members of WTBL, this is because WTBL is the unincorporated organisation that started up BBL.

BROXBOURNE BIG LOCAL

DIRECTORS' AND TRUSTEES' REPORT (Cont/d)

FOR THE YEAR ENDED 30TH JUNE 2023

Risk Management

The trustees have identified the major risks to which the charity is exposed and believe that the systems in place are adequate to mitigate those risks.

Charitable and political donations

During the year the charity made no political or charitable donations.

REFERENCE AND ADMINISTRATIVE DETAILS

Company number: 12055143

Charity number: 1197644

Directors / Trustees

Noelle Jacqueline Blackman– Chair

David Michael Andrew Birley

Adijat Abake Balogun – Resigned 30/06/2023

Brian Richard Cooke – Resigned 30/06/2023

Jeffrey John Allen

Stephen Andrew Parker

Registered Office: Wormley Community Centre Fairfield Drive, Wormley, Broxbourne, England, EN10 6DX

Bankers: CAF Bank Limited, 25 Kings Hill Avenue, Kings Hill, West Malling, Kent, M19 4JQ

Independent examiner: Keith Grover

HB Accountants, Plumpton House, Plumpton Road, Hoddesdon, Herts. EN11 0LBHB

Trustees' responsibility statement

The Trustees (who are also directors of Broxbourne Big Local for the purposes of company law) are responsible for preparing the Annual Report and the financial statements in accordance with applicable law and United Kingdom Accounting Standards (United Kingdom Generally Accepted Accounting Practice) including Financial Reporting Standard 102 "The Financial Reporting Standard applicable in the UK and Republic of Ireland"

Company law requires the trustees to prepare financial statements for each financial year which give a true and fair view of the state of affairs of the charitable company and of the incoming resources and application of resources, including the income and expenditure for that period. In preparing these financial statements, the trustees are required to:

- select suitable accounting policies and then apply them consistently;
- observe the methods and principles in the Charities SORP;
- make judgements and estimates that are reasonable and prudent;
- state whether applicable UK Accounting Standards have been followed, subject to any material departures disclosed and explained in the financial statements;
- prepare the financial statements on the going concern basis unless it is inappropriate to presume that the charitable company will continue in business.

The trustees are responsible for keeping proper accounting records that disclose with reasonable accuracy at any time the financial position of the charitable company and enable them to ensure that the financial statements comply with the Companies Act 2006. They are also responsible for safeguarding the assets of the charitable company and hence for taking reasonable steps for the prevention and detection of fraud and other irregularities.

This report has been prepared in accordance with the special provisions of Part 15 of the Companies Act 2006 relating to small companies.

BROXBOURNE BIG LOCAL
DIRECTORS' AND TRUSTEES' REPORT (Cont/d)
FOR THE YEAR ENDED 30TH JUNE 2023

Approved by order of the board of trustees on 06th February 2024 and signed on its behalf by:

A handwritten signature in black ink that reads "Noelle Blackman". The signature is written in a cursive style with a large initial 'N' and a long, sweeping tail on the 'y'.

NOELLE BLACKMAN (CHAIR)

**INDEPENDENT EXAMINER'S REPORT TO THE TRUSTEES OF
BROXBOURNE BIG LOCAL**

I report on the accounts of the company for the year ended 30 June 2023, which are set out on pages 11 to 21.

This report is made solely to the charity's trustees, as a body, in accordance with the Charities Act 2011. My work has been undertaken so that I might state to the charity's trustees those matters I am required to state to them in an independent examiner's report and for no other purpose. To the fullest extent permitted by law, I do not accept or assume responsibility to anyone other than the charity and the charity's trustees as a body, for my Independent Examination, for this report, or for the opinions I have formed.

Respective responsibilities and basis of report

As the charity's trustees of the Company (who are also the directors of the company for the purposes of company law), you are responsible for the preparation of the accounts in accordance with the requirements of the Companies Act 2006 ("the 2006 Act").

Having satisfied myself that the accounts of the Company are not required to be audited for this year under Part 16 of the 2006 Act and are eligible for independent examination, I report in respect of my examination of your charity's accounts as carried out under section 145 of the Charities Act 2011 ("the 2011 Act"). In carrying out my examination, I have followed the Directions given by the Charity Commission (under section 145(5)(b) of the 2011 Act).

Independent examiner's statement

I have completed my examination. I confirm that no material matters have come to my attention which gives me cause to believe that:

- accounting records were not kept in accordance with section 386 of the Companies Act 2006; or
- the accounts do not accord with such records; or
- the accounts do not comply with relevant accounting requirements under section 396 of the Companies Act 2006 other than any requirement that the accounts give a 'true and fair' view which is not a matter considered as part of an independent examination; or
- the accounts have not been prepared in accordance with the Charities SORP (FRS102).

I have no concerns and have come across no other matters in connection with the examination to which attention should be drawn in this report in order to enable a proper understanding of the accounts to be reached.



Keith Grover
HB Accountants
Plumpton House,
Plumpton Road,
Hoddesdon,
Herts EN11 0LB

Date: 22/3/24

BROXBOURNE BIG LOCAL
STATEMENT OF FINANCIAL ACTIVITIES
FOR THE YEAR ENDED 30TH JUNE 2023
SUMMARY INCOME AND EXPENDITURE ACCOUNT

	Notes	Unrestricted Funds £	Restricted Funds £	Total 2023 £	Total 2022 £
Income					
Grants and donations	2	124	111,955	112,079	122,012
Income from charitable activities	3	50,926	23,588	74,514	46,941
Investment income	4	129	-	129	3
Total income		<u>51,179</u>	<u>135,543</u>	<u>186,722</u>	<u>168,956</u>
Expenditure					
Cost of raising funds	5	2,514	3,125	5,639	2,549
Expenditure on charitable activities	5	24,337	116,912	141,249	102,557
Total expenditure		<u>26,851</u>	<u>120,037</u>	<u>146,888</u>	<u>105,106</u>
Net income / (expenditure)		24,328	15,506	39,834	63,850
Transfer between funds		5,447	(5,447)	-	-
Net movement in funds		<u>29,775</u>	<u>10,059</u>	<u>39,834</u>	<u>63,850</u>
<i>Reconciliation of funds</i>					
Total funds, brought forward		38,990	24,856	63,846	(4)
Total funds, carried forward		<u>68,765</u>	<u>34,915</u>	<u>103,680</u>	<u>63,846</u>

CONTINUING OPERATIONS

None of the company's activities were acquired or discontinued during the above two financial periods.

TOTAL RECOGNISED GAINS AND LOSSES

The company has no recognised gains or losses other than the above movement in funds for the above two financial periods.

The notes on pages 13 to 21 form part of these accounts.

BROXBOURNE BIG LOCAL
BALANCE SHEET AS AT 30TH JUNE 2023

	Notes	2023		2022	
		£	£	£	£
Fixed assets					
Tangible assets	10		20,755		15,966
Current assets					
Debtors	11	28,492		30,693	
Cash at bank and in hand		81,655		39,772	
		110,147		70,465	
Liabilities					
Creditors falling due with in one year	12	(27,222)		(22,585)	
Net current assets			82,925		47,880
Net assets			103,680		63,846
Funds					
Unrestricted funds:	13		68,765		38,990
Restricted funds	13		34,915		24,856
Total funds			103,680		63,846

In preparing these financial statements:

For the financial period ended 30th June 2023 the company was entitled to exemption from audit under section 477 Companies Act 2006. No member of the company has deposited a notice, pursuant to section 476, requiring an audit of these financial statements under the requirements of the Companies Act 2006.

The directors acknowledge their responsibilities for ensuring that the company keeps accounting records which comply with section 386 of the Act and for preparing financial statements which give a true and fair view of the state of affairs of the company as at the end of the financial period and of its profit or loss for the financial period in accordance with the requirements of sections 394 and 395 and which otherwise comply with the requirements of the Companies Act 2006 relating to accounts, so far as applicable to the company.

These financial statements have been prepared in accordance with the provisions applicable to companies subject to the small companies' regime within Part 15 of the Companies Act 2006.

These financial statements were approved by the Board of Directors and Trustees on 06th February 2024 and were signed on its behalf by:



..... NOELLE BLACKMAN (CHAIR)

Company number: 12055143

The notes on pages 13 to 21 form part of these accounts.

BROXBOURNE BIG LOCAL
NOTES TO THE ACCOUNTS
FOR THE YEAR ENDED 30TH JUNE 2023

1. ACCOUNTING POLICIES

1.1 Basis of preparation of accounts

The financial statements have been prepared in accordance with Accounting and Reporting by Charities: Statement of Recommended Practice applicable to charities preparing their accounts in accordance with the Financial Reporting Standard applicable in the UK and Republic of Ireland (FRS 102) (effective 1 January 2019) – (Charity SORP (FRS 102), The Financial Reporting Standard applicable in the UK and Republic of Ireland (FRS 102) and the Companies Act 2006.

Broxbourne Big Local meets the definition of a public benefit entity under FRS 102.

The financial statements are prepared in sterling, which is the functional currency of the Charity. Monetary amounts in these financial statements are rounded to the nearest £.

The accounts (financial statements) have been prepared under the historical cost convention with items recognised at cost or transaction value unless otherwise stated in the relevant note(s) to these accounts.

1.2 Preparation of accounts on a going concern basis

The Charity's Financial Statements show net surplus of £39,834 for the year and free reserves of £63,650. The trustees are of the view that these results have secured the immediate future of the Charity for the next 12 to 18 months and on this basis the Charity is a going concern.

1.3 Income recognition

Grant income

Grants are credited to the SOFA when the charity is entitled to the funds. Income is only deferred where there are time constraints imposed by the donor or if the funding is performance related.

Where entitlement to grants receivable is dependent upon fulfilment of conditions within the charity's control, the income is recognised when there is sufficient evidence that conditions will be met.

Grants supporting the core activities of the charity and with no specific restrictions placed upon their use are included within donations and legacies. Grants that have specific restrictions placed upon their use are included within income from charitable activities.

Capital grants for the purchase of fixed assets are credited to restricted incoming resources on the earlier date of when they are received or receivable. Depreciation on the related fixed assets is charged against the restricted fund.

Donations and legacies

Donations are recognised in the period in which they are received. Legacy income is recognised when the charity's entitlement is judged to be probable and where the amount can be reliably measured.

Contract income

Income from charitable activities include income recognised as earned (as the related goods and services are provided) under contract.

Room hire and service charge income

Room hire and service charge income are credited to income in the year in which they are receivable.

Investment income

Investment income is included when receivable.

BROXBOURNE BIG LOCAL

NOTES TO THE ACCOUNTS

FOR THE YEAR ENDED 30TH JUNE 2023

1.11 Creditors and provisions

Creditors and provisions are recognised where the charity has a present obligation resulting from a past event that will probably result in the transfer of funds to a third party and the amount due to settle the obligation can be measured or estimated reliably. Creditors and provisions are normally recognised at their settlement amount after allowing for any trade discounts due.

1.12 Financial instruments

The Trust only has financial assets and financial liabilities of a kind that qualify as basic financial instruments. Basic financial instruments are initially recognised at transaction value and subsequently measured at their settlement value with the exception of bank loans which are subsequently measured at amortised cost using the effective interest method.

1.13 Taxation

The Charity is a registered charity and, therefore, is not liable for Income Tax or Corporation Tax on income derived from its charitable activities, as it falls within the various exemptions available to registered charities.

1.14 Judgement and key sources of estimation uncertainty

In the application of the charity's accounting policies, the charity is required to make judgements, estimates and assumptions about the carrying amount of assets and liabilities that are not readily apparent from other sources. The estimates and associated assumptions are based on historical experience and other factors that are considered to be relevant. Actual results may differ from these estimates.

The estimates and underlying assumptions are reviewed on an ongoing basis. Revisions to accounting estimates are recognised in the period in which the estimate is revised where the revision affects only that period, or in the period of the revision and future periods where the revision affects both current and future periods.

1.15 Cash flow statement

The charity qualifies as a small charity and advantage has been taken of the exemption provided by SORP (FRS 102) (Bulletin 1 published on 2 February 2016). The charity opted to and have, therefore, not included a cash flow statement in these financial statements.

2. GRANTS AND DONATIONS

	Unrestricted Funds	Restricted Funds	2023	2022
	£	£	£	£
Wormley & Turnford Big Local via CVS for Broxbourne & East Herts	-	60,900	60,900	75,927
Arnold Clark Automation	-	-	-	1,000
Broxbourne Council	-	1,000	1,000	-
Donations	124	-	124	60
Wormley & Turnford Big Local via CVS for Broxbourne & East Herts - donation in kind	-	50,055	50,055	45,025
	<u>124</u>	<u>111,955</u>	<u>112,079</u>	<u>122,012</u>
2022	<u>6,807</u>	<u>115,205</u>	-	<u>122,012</u>

The charity is grateful to Wormley and Turnford Big Local for deploying staff employed by its trusted partner Community Action Broxbourne and East Herts (CABAH) to provide management, maintenance, booking, community development and promotional and marketing services at the Community Centre and in the wider community. The value placed by CABAH for these services are recognised within grants and donations as income and a corresponding charge is included within support costs.

BROXBOURNE BIG LOCAL
NOTES TO THE ACCOUNTS
FOR THE YEAR ENDED 30TH JUNE 2023

3. INCOME FROM CHARITABLE ACTIVITIES

	Unrestricted Funds £	Restricted Funds £	2023 £	2022 £
Community projects: <i>Grants and contracts</i>				
Broxbourne Council	-	1,200	1,200	-
Hertfordshire Community Foundation	-	8,128	8,128	-
Hertfordshire County Council	-	14,260	14,260	584
National Lottery Awards for All	-	-	-	6,435
	<u>-</u>	<u>23,588</u>	<u>23,588</u>	<u>7,019</u>
Space:				
Premises hire	50,926	-	50,926	39,922
	<u>50,926</u>	<u>-</u>	<u>50,926</u>	<u>39,922</u>
	<u>50,926</u>	<u>23,588</u>	<u>74,514</u>	<u>46,941</u>
2022	<u>40,506</u>	<u>6,435</u>	<u>-</u>	<u>46,941</u>

4. INVESTMENT INCOME

	Unrestricted Funds £	Restricted Funds £	2023 £	2022 £
Interest on cash deposits	129	-	129	3
	<u>129</u>	<u>-</u>	<u>129</u>	<u>3</u>
2022	<u>3</u>	<u>-</u>	<u>-</u>	<u>3</u>

5. ANALYSIS OF EXPENDITURE

	Raising funds £	Community projects £	Space £	2023 £	2022 £
Rates	-	60	1,018	1,078	1,977
Utilities	-	740	12,583	13,323	7,179
Cleaning	-	183	3,119	3,302	6,661
Repairs and maintenance	-	911	10,961	11,872	22,578
Premises insurance	-	48	808	856	169
Gardening expenses	-	1,984	150	2,134	2,075
Sessional staff	-	4,371	6,806	11,177	480
Consumables	-	868	3	871	189
Depreciation	-	33	559	592	293
Legal and professional costs	3,125	-	21,695	24,820	9,230
Subscriptions and licences	-	24	400	424	139
Marketing and publicity	-	243	-	243	574
Other direct cost	-	8,637	2,074	10,711	-
Support costs (Note 6)	2,473	14,323	47,609	64,405	52,482
Governance costs (Note 6)	41	240	799	1,080	1,080
	<u>5,639</u>	<u>32,665</u>	<u>108,584</u>	<u>146,888</u>	<u>105,106</u>
2022	<u>2,549</u>	<u>1,191</u>	<u>101,366</u>	<u>-</u>	<u>105,106</u>

Of the £146,888 expenditure in 2023 (2022 - £105,106), £26,851 was charged to unrestricted funds (2022 - £8,322) and £120,037 to restricted funds (2022 - £96,784).

BROXBOURNE BIG LOCAL

NOTES TO THE ACCOUNTS (Cont/d)

FOR THE YEAR ENDED 30TH JUNE 2023

6. ANALYSIS OF SUPPORT AND GOVERNANCE COSTS

The charity initially identifies the costs of its support functions. It then identifies those costs which relate to the governance function. Governance costs and other support costs are apportioned separately between charity's key activity undertaken (see note 5) in the year. All the general support and governance costs have been apportioned to the various charitable activities on the basis of direct costs allocated to each activity.

	Support costs £	Governance costs £	Total 2023 £	Total 2022 £
Premises and equipment costs	4,283	-	4,283	3,497
Communication and IT Costs	902	-	902	201
Legal and professional costs	8,756	-	8,756	3,363
Management and administration	50,055	-	50,055	45,025
Sundry expenses	409	-	409	396
Independent examination fees	-	1,080	1,080	1,080
	<u>64,405</u>	<u>1,080</u>	<u>65,485</u>	<u>53,562</u>
2022	<u>52,482</u>	<u>1,080</u>	<u>-</u>	<u>53,562</u>

7. NET INCOME / (EXPENDITURE) FOR THE YEAR

	2023 £	2022 £
Net movement in funds is shown after charging:		
Depreciation on tangible fixed assets	658	326
Independent examiner's fees	<u>1,080</u>	<u>1,080</u>

8. ANALYSIS OF STAFF COSTS, TRUSTEES REMUNERATION AND EXPENSES, AND COST OF KEY MANAGEMENT PERSONNEL

No staff were employed during the year and the preceding year.

The key management personnel of the charity comprise the Board of Trustees.

No trustees have received any remuneration from the charity during the year (2022 - £Nil).

No trustees have received any other benefits from the charity during the year (2022 - £Nil).

None of the trustees received reimbursed expenses during the year (2022 - £Nil).

9. STAFF NUMBERS

The average monthly number of persons employed by the charity during the year was Nil (2022 – Nil).

BROXBOURNE BIG LOCAL

NOTES TO THE ACCOUNTS (Cont/d)

FOR THE YEAR ENDED 30TH JUNE 2023

10. TANGIBLE FIXED ASSETS

			2023	2022
			£	£
NET BOOK VALUES				
Long Leasehold land & building			15,640	15,966
Fixtures, fittings & Equipment			5,115	-
			<u>20,755</u>	<u>15,966</u>
MOVEMENTS IN YEAR				
<u>Cost or valuation</u>	Opening Balances	Additions	Disposals	Closing Balances
	£	£	£	£
Long Leasehold land & building	16,292	-	-	16,292
Fixtures, fittings & Equipment	-	5,447	-	5,447
	<u>16,292</u>	<u>5,447</u>	<u>-</u>	<u>21,739</u>
<u>Depreciation</u>	Opening Balances	Charge For Year	Disposals	Closing Balances
	£	£	£	£
Long Leasehold land & building	326	326	-	652
Fixtures, fittings & Equipment	-	332	-	332
	<u>326</u>	<u>658</u>	<u>-</u>	<u>984</u>

The long leasehold property represents the land and building Wormley Community Centre and the car park. The property was leased to Broxbourne Big Local from The Council of the Borough of Broxbourne on a 999-year lease and the charity is committed to running the property as a community centre.

11. DEBTORS

	Total	Total
	2023	2022
	£	£
Grant and rental debtors	26,868	29,429
Prepayments	1,624	1,264
	<u>28,492</u>	<u>30,693</u>

12. CREDITORS: amounts falling due within one year

	Total	Total
	2023	2022
	£	£
Trade creditors	11,487	-
Other creditors	2,350	225
Accruals	5,433	16,897
Deferred income (note 15)	7,952	5,463
	<u>27,222</u>	<u>22,585</u>

BROXBOURNE BIG LOCAL
NOTES TO THE ACCOUNTS (Cont/d)
FOR THE YEAR ENDED 30TH JUNE 2023

13. MOVEMENT IN FUNDS

	Balance at 01.07.2022 £	Income £	Expenditure £	Transfers £	Balance at 30.06.2023 £
Restricted funds:					
Wormley & Turnford Big Local via CVS for Broxbourne & East Herts	1,455	110,955	98,980	(2,250)	11,180
Arnold Clark Automation	1,000	-	1,000	-	-
Broxbourne Council	-	2,200	2,200	-	-
Hertfordshire Community Foundation	-	8,128	8,128	-	-
Hertfordshire County Council	-	14,260	7,251	-	7,009
National Lottery Awards for All	6,435	-	2,152	(3,197)	1,086
Building improvements	15,966	-	326	-	15,640
Total restricted funds	24,856	135,543	120,037	(5,447)	34,915
Unrestricted funds	38,990	51,179	26,851	5,447	68,765
Total funds	63,846	186,722	146,888	-	103,680

Movement in funds – previous year

	Balance at 01.07.2021 £	Income £	Expenditure £	Transfers £	Balance at 30.06.2022 £
Restricted funds:					
Wormley & Turnford Big Local via CVS for Broxbourne & East Herts	-	114,205	96,458	(16,292)	1,455
Arnold Clark Automation	-	1,000	-	-	1,000
National Lottery Awards for All	-	6,435	-	-	6,435
Building improvements	-	-	326	16,292	15,966
Total restricted funds	-	121,640	96,784	-	24,856
Unrestricted funds	(4)	47,316	8,322	-	38,990
Total funds	(4)	168,956	105,106	-	63,846

Description, nature and purpose of restricted funds:

- Wormley & Turnford Big Local – Reopening, refresh and refurbishment of the Community Centre and running costs of the Community Centre.
- Arnold Clark Automation - Purchase furniture for the Community Centre.
- Broxbourne Council – Funding of £1,200 for Healthy Cookery classes on a budget and £1,000 for the purchase of furniture for the Community Centre.
- Hertfordshire Community Foundation – Providing positive activities free of charge in the local area, in a trusted safe space for teenagers.
- Hertfordshire County Council – Funding of £5,000 to run a free warm space Breakfast Club and funding of £3,128 for a school holiday camp program.
- National Lottery Community Fund – New garden shed, benches and tools for allotment group.
- Building improvements – Community centre building improvement costs. Balance carried forward represents undepreciated costs.

Description, nature and purpose of unrestricted funds:

Unrestricted funds: General fund represents funds available to spend at the discretion of the trustees.

BROXBOURNE BIG LOCAL
NOTES TO THE ACCOUNTS (Cont/d)
FOR THE YEAR ENDED 30TH JUNE 2023

14. ANALYSIS OF FUND BALANCES BETWEEN NET ASSETS

	Unrestricted Funds £	Restricted Funds £	Total 2023 £
Tangible fixed assets	5,115	15,640	20,755
Net current assets	63,650	19,275	82,925
	<u>68,765</u>	<u>34,915</u>	<u>103,680</u>

Analysis of fund balances between net assets – previous year

	Unrestricted Funds £	Restricted Funds £	Total 2022 £
Tangible fixed assets	-	15,966	15,966
Net current assets	38,990	8,890	47,880
	<u>38,990</u>	<u>24,856</u>	<u>63,846</u>

15. DEFERRED INCOME

	2023 £	2022 £
Balance brought forward	5,463	7,753
Amounts released from previous periods	(5,463)	(7,753)
Amounts deferred in the year	7,952	5,463
Balance carried forward	<u>7,952</u>	<u>5,463</u>

Deferred income represents £7,952 premises hire income received in advance for 2023/2024.

16. SHARE CAPITAL

The company is constituted as a company limited by guarantee and does not have a share capital divided by shares.

17. RELATED PARTY TRANSACTIONS

Following related party transactions were incurred during the year and preceding year with close relatives of the trustee Noelle Blackman. The trustees obtained three quotes and Noelle Blackman did not participate in the decisions relating to these transactions:

- Property repair services £Nil (2022 - £3,030) provided by a close relative.
- Architectural services £9,839 (2022 - £1,800) provided by a company controlled by a close relative.

Four of the trustees (Noelle Blackman, David Birley, Stephen Parker and Adijat Abake Balogun) are community partnership members of Wormley & Turnford Big Local (WTBL), the WTBL is the unincorporated organisation that started up Broxbourne Big Local.

BROXBOURNE BIG LOCAL
NOTES TO THE ACCOUNTS (Cont/d)
FOR THE YEAR ENDED 30TH JUNE 2023

18. POST BALANCE SHEET EVENTS

In the Autumn 2023, the centre will be submitting its planning application for the following works:

Phase I	New toilets (inc disabled loo), re-wire of hall and foyer and kitchen refresh/ bar extension	£120,000 from WTBL restricted grant
Phase II	New small hall to rear (single storey), bar extension, open up foyer moving front façade	Subject to further additional funding
Phase III	Additional first floor; lift, staircase, two small halls and toilets	Subject to further additional funding