

EDUCATE AN AFRICAN CHILD

England & Wales · Charity number 1197100

Details

Other names JOSEPH AND AGNES EDUCATIONAL FOUNDATION

Status Registered

Legal form CIO

Registered 2021-12-14

Register [View on the Charity Commission register](#)

Contact

Address 1 Adler Court
Earlham Grove
London
E7 9DT

Phone +447957483552

Email inquiries@josephandagnesef.com

Activities

Objects: THE OBJECT[S] OF THE CIO ARE "TO ADVANCE THE EDUCATION OF THE PUPILS AT JOSEPH AND AGNES EDUCATION FOUNDATION IN ENUGU STATE NIGERIA BY PROVIDING AND ASSISTING IN THE PROVISION OFFACILITIES FOR EDUCATION AT THE SCHOOL."

Activities: Educate An African Child (EAAC), a UK-based charity, is committed to supporting the work of Joseph and Agnes Educational Foundation school in Enugu State, Nigeria, whose purpose is to offer free early childhood to primary school education for underprivileged children, particularly those from destitute families and those living in the streets with babies/infants aged 0 to 6, struggling to survive.

Classification

- **How:** Provides Other Finance, Provides Advocacy/advice/information, Acts As An Umbrella Or Resource Body
- **What:** Education/training, The Prevention Or Relief Of Poverty, Accommodation/housing, Economic/community Development/employment
- **Who:** Children/young People, Other Defined Groups

Geography

- Nigeria

Finances

Period end	Income	Expenditure	Assets	Employees
2024-12-31	£6,478	£6,657	-	-
2023-12-31	£2,256	£1,456	-	-
2022-12-31	£7,376	£10,020	-	-

Trustees

Name	Role	Appointed
Janet George	Chair	2019-09-25
Hemuna Pather-Carr		2020-09-02
Iram Bashir		2019-09-25

EDUCATE AN AFRICAN CHILD

England & Wales - Charity number 1197100

Accounts



ANNUAL RETURNS JAN 2024 - DEC 2024



TRUSTEE ANNUAL RETURNS

January – December 2024



Educate An African Child

Registered Address: 1 Adler Court

Earlham Grove

Forest Gate

London E7 9DT

Trustees

Janet George

Hemuna Pather-Carr

Iram Bashir

Members:

Sandra Jahi

Cynthia Skeete

Carol Ene

Mary Ukah

Bank: Co-operative Bank

Santander

Charity Commission Annual Return 2024

EDUCATE AN AFRICAN CHILD

Charity registration number: 1197100

The Chair's Summary

Introduction

Educate an African Child is a charitable organisation that was first established in 2022. Its primary objective is to raise funds to support a nursery school in Enugu, Nigeria, which offers primary education to children from families who cannot afford a basic standard of education. This institution aims to provide a high-quality elementary education for children living in extreme poverty. The beneficiaries primarily include very poor families residing in substandard housing and destitute conditions. Consequently, many parents struggle to adequately feed and clothe their children, living in abject poverty, or at best subsisting on a very low weekly income.

Rationale and Overall Aims of Educate an African Child

Joseph and Agnes school as the main beneficiary of the funds raised by the charity, is committed to delivering a holistic education that provides a solid foundation for its young pupils, thereby improving their prospects for social mobility, however small. The school is a well-equipped institution that offers a high standard of teaching and learning, in addition to social and emotional support for the children.

The charitable initiatives of Educate an African Child raise funds to sponsor the education of each pupil, providing essential resources such as books, uniforms, writing materials, recreational equipment, and other learning tools that promote full engagement in the educational experience. This approach aims to develop pupils into confident, well-rounded learners capable of realising their potential both academically and personally, through a holistic educational ethos.

The school emphasises the modelling of good behaviour and habits in its educational practices. In addition to core academic content, the curriculum includes a variety of extracurricular activities, such as constructive play, maintaining good personal hygiene and encouraging the children to participate in sustainable vegetable gardening.

In October of this year, the charity undertook its main annual fundraising event, this being the "Come Walk with Me" sponsored walk. The walkers were able to raise approximately £2,600 that added to the monies donated by a few individuals who sponsor a handful of children which meets with some of the costs to pay staff.

The aim of the fundraiser was to raise sufficient funds to buy and construct a climbing frame and slide for the children's playground. Sufficient funds were raised

to buy, ship and successfully construct the play equipment. As a result of the charitable support of the agents UPSAT, transportation of goods from the UK to Nigeria were subsidised which significantly reduced our spending on this important undertaking.

This installation has allowed the children to enjoy participating regularly in imaginative play, enhance their physical co-ordination as well as their social and emotional well-being. The children have also learned to take turns in their play and interact with each other empathetically.

The School's Progress to date-An Economic context:

The school has continued to grow from strength to strength despite the significant challenges it has countenanced in maintaining the daily financial running of the premises. A downturn in the economic climate in Nigeria caused by a rampant increase in inflation in 2022 to approximately 20.8%. The price hike of essential commodities such as food (up to 23%), petrol, as well as other energy-based utilities, has warranted a cost-effective approach to spending in the maintenance of the running of the school. This has allowed the establishment to continue to support and provide high quality free education for 9 children between the ages of 1 to 5 years. This is more poignant considering the fact that the National Bureau of Statistics reported that 63% i.e. 133 million Nigerians lived below the national poverty line.

There is further scope to do more to meet with the future objectives and activities of the school. There is significant potential to improve and widen its facilities by way of action plans devised by the charity's governing body in close collaboration with the school's manager/founder and other stakeholders. The plans that intend to be action are to:

1. Recruit a fundraiser to increase funds for larger projects such as establishing the primary school build.
2. Undertake our annual "Come walk with me" fundraiser to raise £4-6K to purchase a minibus to transport the children to and from school in light of the soaring and thus prohibitive costs of transportation.
3. Undertake more outreach work so that we can increase the number of pupils in attendance to meet our target number of 12
4. Develop a library hub to 21st century standards
5. Develop the primary school classrooms for 40-60 places

Closing remarks: The charity and its stakeholders have come a long way and have endeavoured to meet with their aims this year as in previous years. We will continue to work in a collaborative manner to meet with the above objectives. In doing so we are confident that the school that will continue to excel in providing an enriching and high standard of education that every impoverished child in Enugu should have the opportunity to enjoy to maximize their life chances.

Executive Director's Overview

Introduction

This Annual Report has been prepared in accordance with the requirements of the Charities Act and sets out the performance, key activities, and challenges of *Educate an African Child* (Charity Registration Number: 1197100). Our mission is to transform lives by widening access to quality education for underprivileged children in Nigeria. Through our primary school in Enugu State, we provide free nursery and primary education to children from families living below the poverty line, helping to break the cycle of poverty through learning and opportunity.

Aims, Objectives, and Purpose

Aims

Educate an African Child exists to enhance educational opportunities for children in Nigeria, with a particular focus on those from vulnerable families who face significant socio-economic barriers.

Objectives

To achieve this aim, our objectives are to:

- Advance the education of pupils at the *Joseph and Agnes Educational Foundation* in Enugu State, Nigeria, by providing and supporting the provision of facilities and resources for effective learning.
- Develop the educational capacity and skills of socially and economically disadvantaged communities in Nigeria, enabling individuals to better identify and meet their own needs and to participate more fully in society.

Purpose

At the heart of our work is a simple but powerful purpose: to ensure that every child has access to quality education. By doing so, we empower children to break free from the cycle of poverty and build brighter futures for themselves, their families, and their wider communities.

Achievements

Despite the economic pressures and logistical challenges faced during the year, *Educate an African Child* has continued to make meaningful progress towards its aims and objectives. Our efforts have strengthened both the delivery of education in Enugu and the support we provide to children from disadvantaged backgrounds.

Some key achievements from the past year include:

- **Partnerships with local organisations** – We continued to build and strengthen relationships with community groups and churches. These partnerships have enabled us to expand outreach visits to areas where women and children are often found begging for food and money. This work is challenging and requires patience, as it can sometimes take more than a year to encourage an individual to leave behind the perceived security of street begging.
- **Navigating economic challenges** – Rising living costs and inflation in Nigeria presented considerable financial pressures. Nonetheless, we maintained core operations and continued to provide free education to children most in need.
- **School development** – Renovation work began on the first floor of our facility, creating space to accommodate the natural progression from nursery to primary education. This marks an important step towards offering a complete early years and primary school pathway.
- **Pupil progression** – Eight children successfully progressed from pre-school into primary level education. This milestone demonstrates the value of continuity in our programme and highlights the impact of sustained support.
- **Fundraising success** – A sponsored fundraising walk was successfully delivered in the UK, helping to raise vital funds and awareness. This initiative not only generated financial support but also provided a foundation for building a more sustainable base of members and sponsors.

- **Staffing** – We retained the majority of our dedicated teaching and support staff, although two members left during the year due to dissatisfaction with salary levels. Staff retention remains a key priority given the challenging economic climate.

Challenges

In addition to the issues outlined in previous reports, a number of ongoing challenges continued to affect our operations during the year:

- **Lack of awareness of poverty's impact** – Many communities in Igboland still lack an understanding of the deep impact that extreme poverty and generational educational deprivation can have, particularly for girls and widows. Entrenched societal attitudes towards the value of education for marginalised groups make it harder to ensure equitable access for all children.
- **Barriers within the educational system** – Although primary education in Nigeria is officially free, hidden costs such as uniforms, books, and informal fees continue to exclude the poorest families. This undermines the principle of universal access and presents a constant challenge for the children we support.
- **Outreach and engagement skills gap** – Successfully building trust with women and families living on the streets requires specific outreach expertise. At present, our capacity in this area is limited, and additional funding will be needed to employ an outreach worker who can collaborate with grassroots organisations to engage families more effectively.
- **Staffing and retention** – Recruiting and retaining qualified teachers and volunteers remains difficult due to economic pressures and limited funding to offer competitive salaries. Meeting the national minimum wage in Nigeria is increasingly essential if we are to retain skilled staff and maintain service quality.

- **Pupil continuity** – Only four students were unable to remain in consistent education during the year. This was largely due to homelessness, unstable living arrangements, and our limited ability to cover transport costs. Ensuring continuity of education for these children is one of our most pressing challenges.

Financial Challenges

The charity continues to face significant financial pressures. In Nigeria, there is little to no access to grants or government funding, making us almost entirely reliant on private donations. This dependence on a small number of donors leaves our finances vulnerable and highlights the urgent need to diversify income streams.

Rising inflation and operational costs have further strained our budget, particularly affecting staff retention and recruitment. Teacher salaries no longer cover basic living costs, making it difficult to maintain stable staffing.

We also lack the capacity to employ a dedicated fundraising or development officer, limiting our ability to secure sustainable income and build stronger partnerships. Addressing this gap will be critical to our long-term stability and growth.

Statistical data to provide an Economic and social contexts in Igbo states

Literacy Rates:

Current literacy rates in Igbo State are estimated at 62%, according to the National Bureau of Statistics. This figure is significantly lower in rural areas, where literacy can drop to as low as 50%.

Poverty Rates:

Approximately 43% of the population in Igbo State lives in poverty, severely limiting their ability to afford school fees and educational materials (National Bureau of Statistics, 2023).

Cost of Living crisis:

The cost of essential goods such as food and utilities are rapidly rising, with a report from the Nigerian Bureau of Statistics indicating that the

average price of food items has increased by 32% in the past year, directly affecting household budgets.

Food Inflation:

The National Bureau of Statistics reported that food prices increased by over 30% in 2023. This rise has severely impacted nutrition, with 20% of households reportedly experiencing food insecurity, further hindering children's ability to learn effectively.

Academic context

Pupil Numbers and Progress

During the year, pupil numbers in the nursery and pre-school sections fell from eight to four, largely due to family displacement, homelessness, and rising living costs which made transport to school unaffordable. Despite these challenges, we proudly promoted eight children to Primary 1. Their progress in reading, writing, numeracy, and STEM subjects has been particularly encouraging, though IT skills remain limited due to infrastructural challenges such as poor connectivity.

Barriers to Continuity

Many of the families we serve live on the streets of Enugu, making them difficult to engage consistently. Outreach remains a challenge, with much of the work currently undertaken by our Founder alone. Wider economic hardship—including the removal of fuel subsidies and rising housing costs—has placed additional strain on families, forcing some to prioritise food over transport to school.

Educational Approach and Support

Despite these barriers, our children continue to thrive. Many are now confidently reading two- to four-letter words phonetically, demonstrating strong progress despite the absence of home support or extracurricular learning. We remain committed to a discovery-based approach, encouraging curiosity, questioning, and social development.

We are grateful to our UK link schools, including UCL Nursery and St Winefrid's Primary School, for providing books, furniture, and teaching

resources. We also extend thanks to shipping partners Opsat Ltd and Worldwide Links, whose heavily discounted services allow us to equip our classrooms with quality play materials and furnishings.

Nutrition

To ensure no child learns on an empty stomach, the school continues to provide simple breakfasts and lunches to pupils where needed.

Our Greatest Challenges

1. Financial Sustainability

The charity remains heavily reliant on a small number of donors, leaving us vulnerable to fluctuations in support. Rising inflation and operational costs in Nigeria have increased pressure on our limited budget, particularly affecting our ability to retain staff, cover transport for pupils, and expand outreach. Without dedicated fundraising staff, both in the UK and Nigeria, it is difficult to secure new funding streams or develop sustainable long-term income.

2. Pupil Retention and Continuity of Education

Many of the children we support come from families experiencing homelessness, extreme poverty, or frequent displacement. Parents are often forced to choose between food for the day and transport to school, which disrupts continuity of education. While we proudly progressed eight children into primary education this year, overall enrolment in nursery and pre-school has fallen, and some pupils have been lost due to unstable housing and financial hardship.

3. Staffing and Outreach Capacity

Recruiting and retaining teachers and outreach workers is a continuing struggle. Salaries are no longer sufficient to meet the rising cost of living in Nigeria, and without meeting national minimum wage levels, staff retention remains at risk. In addition, outreach work to engage families living on the streets is currently led almost entirely by our Founder. Without additional trained staff or volunteers, it is challenging to build trust with hard-to-reach families and bring more children into education.

Future Plans

Looking ahead, *Educate an African Child* is committed to strengthening both the educational provision in Enugu and our wider support network. Our plans for the coming year include:

Parent and Community Engagement

- Host a *Labour Day celebration* with activities involving both children and families.
- Provide parents with basic literacy lessons, including how to write their names and signatures, to support confidence and everyday participation.
- Deliver *environmental and hygiene awareness days* for parents and children, including collaboration with local private schools.
- Run a *school bus driver training day* focused on road safety, responsibilities, and basic emergency response.

International Links and Enrichment

- Develop *student exchange sessions* via Zoom with our UK partner schools, allowing children to share their views, culture, and heritage.
- Introduce *story nights* using WhatsApp/Zoom, where children can listen to bedtime stories read by UK parents alongside their peers.

Advocacy and Awareness

- Launch advocacy campaigns to raise awareness of children's rights to early childhood education.
- Begin constructive dialogue with state education authorities to highlight the challenges faced and to seek improved facilities and resources for disadvantaged pupils.

Capacity Building

- Recruit key staff positions including a Head Teacher, Fundraising Development Manager, Outreach Manager, and Volunteer Development Manager. These roles will be critical in ensuring long-term sustainability, outreach effectiveness, and the expansion of our programmes.

Conclusion

The past year has brought both progress and significant challenges for *Educate an African Child*. We are proud of the children who have advanced in their education, the families we have supported, and the partnerships that continue to sustain our work. At the same time, we recognise the financial, social, and operational hurdles that must be overcome to secure a stronger future for the school and its pupils.

Our commitment remains steadfast: to provide quality education for children from disadvantaged backgrounds in Enugu, helping them to break the cycle of poverty and unlock their potential. With the continued support of our donors, partners, and volunteers, we are confident that we can build on our achievements, address the challenges ahead, and create lasting opportunities for the children and families we serve.

On behalf of the trustees, we extend our deepest gratitude to everyone who has contributed to this mission. Together, we are making a tangible difference in the lives of children who might otherwise be left behind.

The Chair's Summary (2023–2024)

Introduction

Educate an African Child is a charitable organisation established in 2022. Its primary purpose is to raise funds in the United Kingdom to support the Joseph and Agnes Educational Foundation in Enugu, Nigeria. The school provides free nursery and primary education for children from families living below the poverty line—those who cannot afford even the most basic level of schooling.

Our beneficiaries are among the most disadvantaged, including families living in temporary or substandard housing and experiencing food insecurity. Many parents struggle to meet their families' daily needs. Against this backdrop, the school offers a safe, nurturing space where children can learn, play, and dream of a better future.

Rationale and Overall Aims of Educate an African Child

The Joseph and Agnes Educational Foundation remains the principal beneficiary of funds raised by Educate an African Child. The school continues to deliver a holistic, values-based education that strengthens children's academic, emotional, and social development. Its goal is to help pupils build a solid educational foundation that can open pathways to social mobility and future opportunity.

Funds raised by the charity cover the costs of learning materials, uniforms, furniture, books, and recreational resources—ensuring that every child, regardless of circumstance, can engage fully in their education. The school's approach blends strong academic teaching with emotional care, social learning, and life skills such as hygiene, empathy, and teamwork.

The School's Progress to Date – An Economic Context

The 2023–24 year was marked by both encouraging progress and significant external pressures. Pupil numbers in the nursery and pre-school sections declined slightly—from eight to four—largely due to family displacement and the rising cost of living. Nevertheless, eight children proudly progressed to the Primary 1 stage, showing strong improvements in reading, writing, numeracy, and STEM skills.

Teaching staff have worked tirelessly to provide consistent, high-quality education despite financial constraints and infrastructural limitations such as unreliable internet access. The school continues to provide daily breakfasts and lunches to ensure no child learns on an empty stomach.

Economic hardship in Nigeria remains severe. The removal of fuel subsidies, escalating inflation, and rising housing costs have increased poverty and reduced family stability. Transport costs have made it difficult for many children to attend school regularly, while teacher retention has been strained by the inability to match rising wage expectations.

Despite these challenges, the charity has achieved several milestones:

- Successful promotion of eight pupils to primary level.
- Renovation of the first floor of the school to expand primary classrooms.
- Strengthened partnerships with local churches and community organisations to reach hard-to-access families.
- Continued collaboration with UK partner schools, including UCL Nursery and St Winefrid's Primary School, providing books, furniture, and learning resources.
- Support from Opsat Ltd and Worldwide Links, whose discounted shipping made it possible to transport essential supplies to Enugu.
- Delivery of the annual "Come Walk With Me" fundraising event, which successfully raised vital funds and increased supporter engagement.

Future Objectives and Activities

The charity and its trustees have identified several priorities for the year ahead:

1. Recruitment and Capacity Building – Appoint a Head Teacher, Fundraising Development Manager, Outreach Manager, and Volunteer Development Manager to strengthen leadership and sustainability.
2. Parent and Community Engagement – Host a Labour Day celebration and run parent literacy sessions focused on writing, reading, and signing.
3. International Collaboration – Expand student exchange and cultural-learning activities via Zoom with UK partner schools.
4. Community Awareness Initiatives – Deliver environmental and hygiene awareness days, and organise training for school bus drivers on road safety and emergency response.
5. Storytelling and Cultural Enrichment – Introduce virtual "Story Nights" via WhatsApp and Zoom, allowing children in Nigeria to listen to bedtime stories read by UK parents.
6. Advocacy and Partnership Development – Engage with local and state education authorities to advocate for early childhood education and improved school facilities.

Closing Remarks

Educate an African Child has continued to demonstrate resilience and purpose throughout another challenging year. Despite financial and social barriers, the charity has sustained its core mission—providing free, quality education to children who would otherwise be excluded from learning.

We extend our sincere gratitude to our supporters, donors, partner schools, shipping partners, and volunteers, whose generosity and commitment make our work possible. With their continued support, we remain confident in our vision: to give every child from vulnerable family in Enugu the opportunity to learn, thrive, and build a brighter future up the primary level of school life.

Janet George

Chair

The above accounts have been drawn up in accordance with current accounting policies and comply with the charitable company's memorandum and articles of association, applicable laws and the requirements of the Statement of Recommended Practice on Accounting and Reporting by Charities' issued in March 2005 by the Charity Commission

Plans for the Future

We intend to engage our current donors and encourage them to attract new members by sending out notices of our walks earlier. By incentivising the current donors by providing vouchers for those attracting new donors.

We will also approach large companies to sponsor our walks.

Additionally, we intend to arrange a Dinner and Music event in August 2026 as a fundraising event, to increase our Income.

What we noticed last year, although our donations increased over the previous year by 115% and the Go Fund also increased 500% over the period. It was the direct and indirect costs which were up by 357%. This was due to fuel shortages, petrol and electricity price hike which pushed up our costs in Nigeria. Additionally, transport cost also impacted the salaries adversely.

In 2026, Staff salaries are projected to rise by a third to meet national minimum wage increases in Nigeria.

There was also a negative impact of exchange rate fluctuation, economic uncertainties due to the new ruling political party with a major shift in policies such as termination of fuel subsidy in Nigeria.

As a result, we incurred a deficit of £179.11 at the end of 31st December 2024.

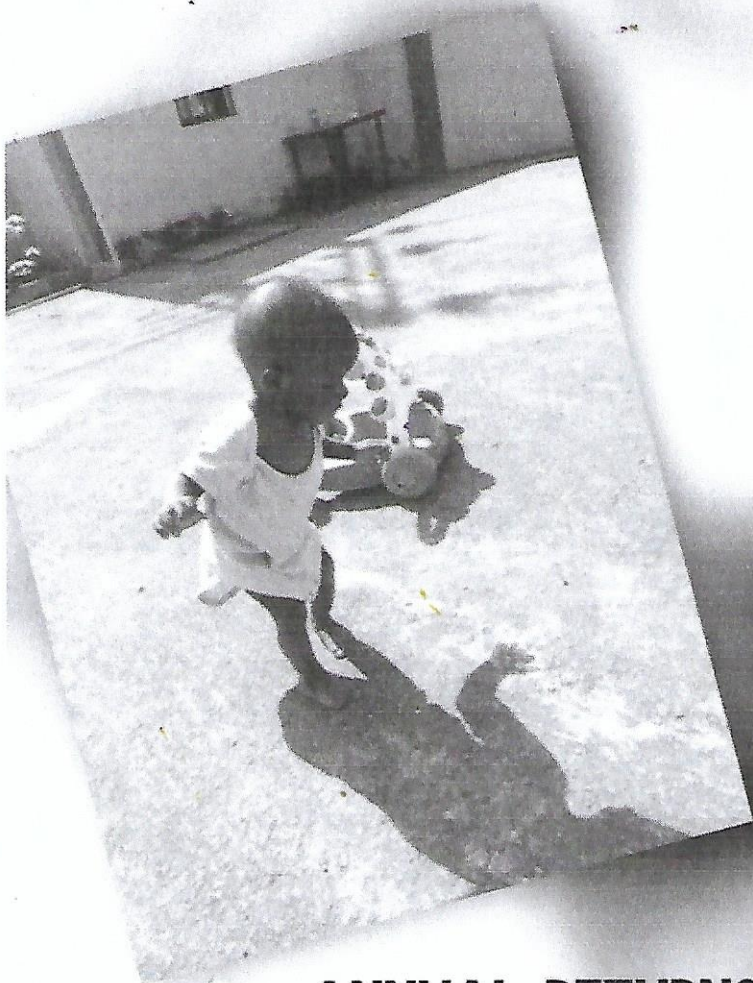
In the UK, the cost of living impacted on the consumers in 2023 which resulted in eroding the purchasing power of consumers. The high street retail outlets were also hit and consumers also cut back on contributing to charities such as ours in 2023.

In 2024, the donors were confident in contributing to our charity and it was also evident in Our Go Fund where the donors were using this method of funding as they were gaining in confidence.

Hemuna Pather-Carr

October 31st 2025.

Educate an African Child		
Financial Statement		
For the Period 1st January 2024 to 31st December 2024		
	2024	2024
incoming Resources		
monthly Donations	4772.3	
Go Fund Me	1678.07	
CAF Interest Received	27.82	
Total Income Resources		6478.19
Resources Expended		
Direct Expenses		
Salaries and Running Costs	5566.26	
Total Direct Expenses		5566.26
Admin & Management		
Web Site Hosting	150	
CAF Monthly Fee	50	
Shipping Costs	815.99	
Printing and Stationery	75.05	
Total Admin and Management Expenses		1091.04
Total Expenses		6657.3
Excess Income /Expenses		-179.11
Opening Balance		3004.73
Closing Balance		5201.59
Statement of Assets & Liabilities as at 3 December 2024		
Fixed Assets		0
Current Assets		
Cash at Santander	353.85	
Cash CAF	161.17	
Cash at Co-op	4686.57	
Total Current Current Assets		5201.59
Current Liabilities		0
Net Current Assets		5201.59
Total Assets Less Current Liabilities		5201.59
Long Term Liabilities		0
Net Assets of the Charity		5201.59



ANNUAL RETURNS JAN 2024 - DEC 2024



TRUSTEE ANNUAL RETURNS

January – December 2024



Educate An African Child

Registered Address: 1 Adler Court

Earlham Grove

Forest Gate

London E7 9DT

Trustees

Janet George

Hemuna Pather-Carr

Iram Bashir

Members:

Sandra Jahi

Cynthia Skeete

Carol Ene

Mary Ukah

Bank: Co-operative Bank

Santander

Charity Commission Annual Return 2024

EDUCATE AN AFRICAN CHILD

Charity registration number: 1197100

The Chair's Summary

Introduction

Educate an African Child is a charitable organisation that was first established in 2022. Its primary objective is to raise funds to support a nursery school in Enugu, Nigeria, which offers primary education to children from families who cannot afford a basic standard of education. This institution aims to provide a high-quality elementary education for children living in extreme poverty. The beneficiaries primarily include very poor families residing in substandard housing and destitute conditions. Consequently, many parents struggle to adequately feed and clothe their children, living in abject poverty, or at best subsisting on a very low weekly income.

Rationale and Overall Aims of Educate an African Child

Joseph and Agnes school as the main beneficiary of the funds raised by the charity, is committed to delivering a holistic education that provides a solid foundation for its young pupils, thereby improving their prospects for social mobility, however small. The school is a well-equipped institution that offers a high standard of teaching and learning, in addition to social and emotional support for the children.

The charitable initiatives of Educate an African Child raise funds to sponsor the education of each pupil, providing essential resources such as books, uniforms, writing materials, recreational equipment, and other learning tools that promote full engagement in the educational experience. This approach aims to develop pupils into confident, well-rounded learners capable of realising their potential both academically and personally, through a holistic educational ethos.

The school emphasises the modelling of good behaviour and habits in its educational practices. In addition to core academic content, the curriculum includes a variety of extracurricular activities, such as constructive play, maintaining good personal hygiene and encouraging the children to participate in sustainable vegetable gardening.

In October of this year, the charity undertook its main annual fundraising event, this being the "Come Walk with Me" sponsored walk. The walkers were able to raise approximately £2,600 that added to the monies donated by a few individuals who sponsor a handful of children which meets with some of the costs to pay staff.

The aim of the fundraiser was to raise sufficient funds to buy and construct a climbing frame and slide for the children's playground. Sufficient funds were raised

to buy, ship and successfully construct the play equipment. As a result of the charitable support of the agents UPSAT, transportation of goods from the UK to Nigeria were subsidised which significantly reduced our spending on this important undertaking.

This installation has allowed the children to enjoy participating regularly in imaginative play, enhance their physical co-ordination as well as their social and emotional well-being. The children have also learned to take turns in their play and interact with each other empathetically.

The School's Progress to date-An Economic context:

The school has continued to grow from strength to strength despite the significant challenges it has countenanced in maintaining the daily financial running of the premises. A downturn in the economic climate in Nigeria caused by a rampant increase in inflation in 2022 to approximately 20.8%. The price hike of essential commodities such as food (up to 23%), petrol, as well as other energy-based utilities, has warranted a cost-effective approach to spending in the maintenance of the running of the school. This has allowed the establishment to continue to support and provide high quality free education for 9 children between the ages of 1 to 5 years. This is more poignant considering the fact that the National Bureau of Statistics reported that 63% i.e. 133 million Nigerians lived below the national poverty line.

There is further scope to do more to meet with the future objectives and activities of the school. There is significant potential to improve and widen its facilities by way of action plans devised by the charity's governing body in close collaboration with the school's manager/founder and other stakeholders. The plans that intend to be action are to:

1. Recruit a fundraiser to increase funds for larger projects such as establishing the primary school build.
2. Undertake our annual "Come walk with me" fundraiser to raise £4-6K to purchase a minibus to transport the children to and from school in light of the soaring and thus prohibitive costs of transportation.
3. Undertake more outreach work so that we can increase the number of pupils in attendance to meet our target number of 12
4. Develop a library hub to 21st century standards
5. Develop the primary school classrooms for 40-60 places

Closing remarks: The charity and its stakeholders have come a long way and have endeavoured to meet with their aims this year as in previous years. We will continue to work in a collaborative manner to meet with the above objectives. In doing so we are confident that the school that will continue to excel in providing an enriching and high standard of education that every impoverished child in Enugu should have the opportunity to enjoy to maximize their life chances.

Executive Director's Overview

Introduction

This Annual Report has been prepared in accordance with the requirements of the Charities Act and sets out the performance, key activities, and challenges of *Educate an African Child* (Charity Registration Number: 1197100). Our mission is to transform lives by widening access to quality education for underprivileged children in Nigeria. Through our primary school in Enugu State, we provide free nursery and primary education to children from families living below the poverty line, helping to break the cycle of poverty through learning and opportunity.

Aims, Objectives, and Purpose

Aims

Educate an African Child exists to enhance educational opportunities for children in Nigeria, with a particular focus on those from vulnerable families who face significant socio-economic barriers.

Objectives

To achieve this aim, our objectives are to:

- Advance the education of pupils at the *Joseph and Agnes Educational Foundation* in Enugu State, Nigeria, by providing and supporting the provision of facilities and resources for effective learning.
- Develop the educational capacity and skills of socially and economically disadvantaged communities in Nigeria, enabling individuals to better identify and meet their own needs and to participate more fully in society.

Purpose

At the heart of our work is a simple but powerful purpose: to ensure that every child has access to quality education. By doing so, we empower children to break free from the cycle of poverty and build brighter futures for themselves, their families, and their wider communities.

Achievements

Despite the economic pressures and logistical challenges faced during the year, *Educate an African Child* has continued to make meaningful progress towards its aims and objectives. Our efforts have strengthened both the delivery of education in Enugu and the support we provide to children from disadvantaged backgrounds.

Some key achievements from the past year include:

- **Partnerships with local organisations** – We continued to build and strengthen relationships with community groups and churches. These partnerships have enabled us to expand outreach visits to areas where women and children are often found begging for food and money. This work is challenging and requires patience, as it can sometimes take more than a year to encourage an individual to leave behind the perceived security of street begging.
- **Navigating economic challenges** – Rising living costs and inflation in Nigeria presented considerable financial pressures. Nonetheless, we maintained core operations and continued to provide free education to children most in need.
- **School development** – Renovation work began on the first floor of our facility, creating space to accommodate the natural progression from nursery to primary education. This marks an important step towards offering a complete early years and primary school pathway.
- **Pupil progression** – Eight children successfully progressed from pre-school into primary level education. This milestone demonstrates the value of continuity in our programme and highlights the impact of sustained support.
- **Fundraising success** – A sponsored fundraising walk was successfully delivered in the UK, helping to raise vital funds and awareness. This initiative not only generated financial support but also provided a foundation for building a more sustainable base of members and sponsors.

- **Staffing** – We retained the majority of our dedicated teaching and support staff, although two members left during the year due to dissatisfaction with salary levels. Staff retention remains a key priority given the challenging economic climate.

Challenges

In addition to the issues outlined in previous reports, a number of ongoing challenges continued to affect our operations during the year:

- **Lack of awareness of poverty's impact** – Many communities in Igboland still lack an understanding of the deep impact that extreme poverty and generational educational deprivation can have, particularly for girls and widows. Entrenched societal attitudes towards the value of education for marginalised groups make it harder to ensure equitable access for all children.
- **Barriers within the educational system** – Although primary education in Nigeria is officially free, hidden costs such as uniforms, books, and informal fees continue to exclude the poorest families. This undermines the principle of universal access and presents a constant challenge for the children we support.
- **Outreach and engagement skills gap** – Successfully building trust with women and families living on the streets requires specific outreach expertise. At present, our capacity in this area is limited, and additional funding will be needed to employ an outreach worker who can collaborate with grassroots organisations to engage families more effectively.
- **Staffing and retention** – Recruiting and retaining qualified teachers and volunteers remains difficult due to economic pressures and limited funding to offer competitive salaries. Meeting the national minimum wage in Nigeria is increasingly essential if we are to retain skilled staff and maintain service quality.

- **Pupil continuity** – Only four students were unable to remain in consistent education during the year. This was largely due to homelessness, unstable living arrangements, and our limited ability to cover transport costs. Ensuring continuity of education for these children is one of our most pressing challenges.

Financial Challenges

The charity continues to face significant financial pressures. In Nigeria, there is little to no access to grants or government funding, making us almost entirely reliant on private donations. This dependence on a small number of donors leaves our finances vulnerable and highlights the urgent need to diversify income streams.

Rising inflation and operational costs have further strained our budget, particularly affecting staff retention and recruitment. Teacher salaries no longer cover basic living costs, making it difficult to maintain stable staffing.

We also lack the capacity to employ a dedicated fundraising or development officer, limiting our ability to secure sustainable income and build stronger partnerships. Addressing this gap will be critical to our long-term stability and growth.

Statistical data to provide an Economic and social contexts in Igbo states

Literacy Rates:

Current literacy rates in Igbo State are estimated at 62%, according to the National Bureau of Statistics. This figure is significantly lower in rural areas, where literacy can drop to as low as 50%.

Poverty Rates:

Approximately 43% of the population in Igbo State lives in poverty, severely limiting their ability to afford school fees and educational materials (National Bureau of Statistics, 2023).

Cost of Living crisis:

The cost of essential goods such as food and utilities are rapidly rising, with a report from the Nigerian Bureau of Statistics indicating that the

average price of food items has increased by 32% in the past year, directly affecting household budgets.

Food Inflation:

The National Bureau of Statistics reported that food prices increased by over 30% in 2023. This rise has severely impacted nutrition, with 20% of households reportedly experiencing food insecurity, further hindering children's ability to learn effectively.

Academic context

Pupil Numbers and Progress

During the year, pupil numbers in the nursery and pre-school sections fell from eight to four, largely due to family displacement, homelessness, and rising living costs which made transport to school unaffordable. Despite these challenges, we proudly promoted eight children to Primary 1. Their progress in reading, writing, numeracy, and STEM subjects has been particularly encouraging, though IT skills remain limited due to infrastructural challenges such as poor connectivity.

Barriers to Continuity

Many of the families we serve live on the streets of Enugu, making them difficult to engage consistently. Outreach remains a challenge, with much of the work currently undertaken by our Founder alone. Wider economic hardship—including the removal of fuel subsidies and rising housing costs—has placed additional strain on families, forcing some to prioritise food over transport to school.

Educational Approach and Support

Despite these barriers, our children continue to thrive. Many are now confidently reading two- to four-letter words phonetically, demonstrating strong progress despite the absence of home support or extracurricular learning. We remain committed to a discovery-based approach, encouraging curiosity, questioning, and social development.

We are grateful to our UK link schools, including UCL Nursery and St Winefrid's Primary School, for providing books, furniture, and teaching

resources. We also extend thanks to shipping partners Opsat Ltd and Worldwide Links, whose heavily discounted services allow us to equip our classrooms with quality play materials and furnishings.

Nutrition

To ensure no child learns on an empty stomach, the school continues to provide simple breakfasts and lunches to pupils where needed.

Our Greatest Challenges

1. Financial Sustainability

The charity remains heavily reliant on a small number of donors, leaving us vulnerable to fluctuations in support. Rising inflation and operational costs in Nigeria have increased pressure on our limited budget, particularly affecting our ability to retain staff, cover transport for pupils, and expand outreach. Without dedicated fundraising staff, both in the UK and Nigeria, it is difficult to secure new funding streams or develop sustainable long-term income.

2. Pupil Retention and Continuity of Education

Many of the children we support come from families experiencing homelessness, extreme poverty, or frequent displacement. Parents are often forced to choose between food for the day and transport to school, which disrupts continuity of education. While we proudly progressed eight children into primary education this year, overall enrolment in nursery and pre-school has fallen, and some pupils have been lost due to unstable housing and financial hardship.

3. Staffing and Outreach Capacity

Recruiting and retaining teachers and outreach workers is a continuing struggle. Salaries are no longer sufficient to meet the rising cost of living in Nigeria, and without meeting national minimum wage levels, staff retention remains at risk. In addition, outreach work to engage families living on the streets is currently led almost entirely by our Founder. Without additional trained staff or volunteers, it is challenging to build trust with hard-to-reach families and bring more children into education.

Future Plans

Looking ahead, *Educate an African Child* is committed to strengthening both the educational provision in Enugu and our wider support network. Our plans for the coming year include:

Parent and Community Engagement

- Host a *Labour Day celebration* with activities involving both children and families.
- Provide parents with basic literacy lessons, including how to write their names and signatures, to support confidence and everyday participation.
- Deliver *environmental and hygiene awareness days* for parents and children, including collaboration with local private schools.
- Run a *school bus driver training day* focused on road safety, responsibilities, and basic emergency response.

International Links and Enrichment

- Develop *student exchange sessions* via Zoom with our UK partner schools, allowing children to share their views, culture, and heritage.
- Introduce *story nights* using WhatsApp/Zoom, where children can listen to bedtime stories read by UK parents alongside their peers.

Advocacy and Awareness

- Launch advocacy campaigns to raise awareness of children's rights to early childhood education.
- Begin constructive dialogue with state education authorities to highlight the challenges faced and to seek improved facilities and resources for disadvantaged pupils.

Capacity Building

- Recruit key staff positions including a Head Teacher, Fundraising Development Manager, Outreach Manager, and Volunteer Development Manager. These roles will be critical in ensuring long-term sustainability, outreach effectiveness, and the expansion of our programmes.

Conclusion

The past year has brought both progress and significant challenges for *Educate an African Child*. We are proud of the children who have advanced in their education, the families we have supported, and the partnerships that continue to sustain our work. At the same time, we recognise the financial, social, and operational hurdles that must be overcome to secure a stronger future for the school and its pupils.

Our commitment remains steadfast: to provide quality education for children from disadvantaged backgrounds in Enugu, helping them to break the cycle of poverty and unlock their potential. With the continued support of our donors, partners, and volunteers, we are confident that we can build on our achievements, address the challenges ahead, and create lasting opportunities for the children and families we serve.

On behalf of the trustees, we extend our deepest gratitude to everyone who has contributed to this mission. Together, we are making a tangible difference in the lives of children who might otherwise be left behind.

The Chair's Summary (2023–2024)

Introduction

Educate an African Child is a charitable organisation established in 2022. Its primary purpose is to raise funds in the United Kingdom to support the Joseph and Agnes Educational Foundation in Enugu, Nigeria. The school provides free nursery and primary education for children from families living below the poverty line—those who cannot afford even the most basic level of schooling.

Our beneficiaries are among the most disadvantaged, including families living in temporary or substandard housing and experiencing food insecurity. Many parents struggle to meet their families' daily needs. Against this backdrop, the school offers a safe, nurturing space where children can learn, play, and dream of a better future.

Rationale and Overall Aims of Educate an African Child

The Joseph and Agnes Educational Foundation remains the principal beneficiary of funds raised by Educate an African Child. The school continues to deliver a holistic, values-based education that strengthens children's academic, emotional, and social development. Its goal is to help pupils build a solid educational foundation that can open pathways to social mobility and future opportunity.

Funds raised by the charity cover the costs of learning materials, uniforms, furniture, books, and recreational resources—ensuring that every child, regardless of circumstance, can engage fully in their education. The school's approach blends strong academic teaching with emotional care, social learning, and life skills such as hygiene, empathy, and teamwork.

The School's Progress to Date – An Economic Context

The 2023–24 year was marked by both encouraging progress and significant external pressures. Pupil numbers in the nursery and pre-school sections declined slightly—from eight to four—largely due to family displacement and the rising cost of living. Nevertheless, eight children proudly progressed to the Primary 1 stage, showing strong improvements in reading, writing, numeracy, and STEM skills.

Teaching staff have worked tirelessly to provide consistent, high-quality education despite financial constraints and infrastructural limitations such as unreliable internet access. The school continues to provide daily breakfasts and lunches to ensure no child learns on an empty stomach.

Economic hardship in Nigeria remains severe. The removal of fuel subsidies, escalating inflation, and rising housing costs have increased poverty and reduced family stability. Transport costs have made it difficult for many children to attend school regularly, while teacher retention has been strained by the inability to match rising wage expectations.

Despite these challenges, the charity has achieved several milestones:

- Successful promotion of eight pupils to primary level.
- Renovation of the first floor of the school to expand primary classrooms.
- Strengthened partnerships with local churches and community organisations to reach hard-to-access families.
- Continued collaboration with UK partner schools, including UCL Nursery and St Winefrid's Primary School, providing books, furniture, and learning resources.
- Support from Opsat Ltd and Worldwide Links, whose discounted shipping made it possible to transport essential supplies to Enugu.
- Delivery of the annual "Come Walk With Me" fundraising event, which successfully raised vital funds and increased supporter engagement.

Future Objectives and Activities

The charity and its trustees have identified several priorities for the year ahead:

1. Recruitment and Capacity Building – Appoint a Head Teacher, Fundraising Development Manager, Outreach Manager, and Volunteer Development Manager to strengthen leadership and sustainability.
2. Parent and Community Engagement – Host a Labour Day celebration and run parent literacy sessions focused on writing, reading, and signing.
3. International Collaboration – Expand student exchange and cultural-learning activities via Zoom with UK partner schools.
4. Community Awareness Initiatives – Deliver environmental and hygiene awareness days, and organise training for school bus drivers on road safety and emergency response.
5. Storytelling and Cultural Enrichment – Introduce virtual "Story Nights" via WhatsApp and Zoom, allowing children in Nigeria to listen to bedtime stories read by UK parents.
6. Advocacy and Partnership Development – Engage with local and state education authorities to advocate for early childhood education and improved school facilities.

Closing Remarks

Educate an African Child has continued to demonstrate resilience and purpose throughout another challenging year. Despite financial and social barriers, the charity has sustained its core mission—providing free, quality education to children who would otherwise be excluded from learning.

We extend our sincere gratitude to our supporters, donors, partner schools, shipping partners, and volunteers, whose generosity and commitment make our work possible. With their continued support, we remain confident in our vision: to give every child from vulnerable family in Enugu the opportunity to learn, thrive, and build a brighter future up the primary level of school life.

Janet George

Chair

The above accounts have been drawn up in accordance with current accounting policies and comply with the charitable company's memorandum and articles of association, applicable laws and the requirements of the Statement of Recommended Practice on Accounting and Reporting by Charities' issued in March 2005 by the Charity Commission

Plans for the Future

We intend to engage our current donors and encourage them to attract new members by sending out notices of our walks earlier. By incentivising the current donors by providing vouchers for those attracting new donors.

We will also approach large companies to sponsor our walks.

Additionally, we intend to arrange a Dinner and Music event in August 2026 as a fundraising event, to increase our Income.

What we noticed last year, although our donations increased over the previous year by 115% and the Go Fund also increased 500% over the period. It was the direct and indirect costs which were up by 357%. This was due to fuel shortages, petrol and electricity price hike which pushed up our costs in Nigeria. Additionally, transport cost also impacted the salaries adversely.

In 2026, Staff salaries are projected to rise by a third to meet national minimum wage increases in Nigeria.

There was also a negative impact of exchange rate fluctuation, economic uncertainties due to the new ruling political party with a major shift in policies such as termination of fuel subsidy in Nigeria.

As a result, we incurred a deficit of **£179.11** at the end of 31st December 2024.

In the UK, the cost of living impacted on the consumers in 2023 which resulted in eroding the purchasing power of consumers. The high street retail outlets were also hit and consumers also cut back on contributing to charities such as ours in 2023.

In 2024, the donors were confident in contributing to our charity and it was also evident in Our Go Fund where the donors were using this method of funding as they were gaining in confidence.

Hemuna Pather-Carr

October 31st 2025.

Educate an African Child		
Financial Statement		
For the Period 1st January 2024 to 31st December 2024		
	2024	2024
incoming Resources		
monthly Donations	4772.3	
Go Fund Me	1678.07	
CAF Interest Received	27.82	
Total Income Resources		6478.19
Resources Expended		
Direct Expenses		
Salaries and Running Costs	5566.26	
Total Direct Expenses		5566.26
Admin & Management		
Web Site Hosting	150	
CAF Monthly Fee	50	
Shipping Costs	815.99	
Printing and Stationery	75.05	
Total Admin and Management Expenses		1091.04
Total Expenses		6657.3
Excess Income /Expenses		-179.11
Opening Balance		3004.73
Closing Balance		5201.59
Statement of Assets & Liabilities as at 3 December 2024		
Fixed Assets		0
Current Assets		
Cash at Santander	353.85	
Cash CAF	161.17	
Cash at Co-op	4686.57	
Total Current Current Assets		5201.59
Current Liabilities		0
Net Current Assets		5201.59
Total Assets Less Current Liabilities		5201.59
Long Term Liabilities		0
Net Assets of the Charity		5201.59

EDUCATE AN AFRICAN CHILD

England & Wales - Charity number 1197100

Accounts

TRUSTEE ANNUAL RETURNS

January – December 2023



Educate An African Child

Registered Address: 1 Adler Court

Earlham Grove

Forest Gate

London E7 9DT

Trustees

Janet George

Hemuna Pather-Carr

Iram Bashir

Members:

Sandra Jahi

Cynthia Skeete

Carol Ene

Mary Ukah

Bank: Charities Aid Foundation

Santander

Charity Commission Annual Return 2023

EDUCATE AN AFRICAN CHILD

Charity registration number: 1197100

The Chair's Summary

Introduction

Educate an African Child is a charitable organisation that was first established in 2022. Its primary objective is to raise funds to support a nursery school in Enugu, Nigeria, which offers primary education to children from families who cannot afford a basic standard of education. This institution aims to provide a high-quality elementary education for children living in extreme poverty. The beneficiaries primarily include very poor families residing in substandard housing and destitute conditions. Consequently, many parents struggle to adequately feed and clothe their children, living in abject poverty, or at best subsisting on a very low weekly income.

Rationale and Overall Aims of Educate an African Child

Joseph and Agnes school as the main beneficiary of the funds raised by the charity, is committed to delivering a holistic education that provides a solid foundation for its young pupils, thereby improving their prospects for social mobility, however small. The school is a well-equipped institution that offers a high standard of teaching and learning, in addition to social and emotional support for the children.

The charitable initiatives of Educate an African Child raise funds to sponsor the education of each pupil, providing essential resources such as books, uniforms, writing materials, recreational equipment, and other learning tools that promote full engagement in the educational experience. This approach aims to develop pupils into confident, well-rounded learners capable of realising their potential both academically and personally, through a holistic educational ethos.

The school emphasises the modelling of good behaviour and habits in its educational practices. In addition to core academic content, the curriculum includes a variety of extracurricular activities, such as constructive play, maintaining good personal hygiene and encouraging the children to participate in sustainable vegetable gardening.

In October of this year, the charity undertook its main annual fundraising event, this being the "Come Walk with Me" sponsored walk. The walkers were able to raise approximately £2,600 that added to the monies donated by a few individuals who sponsor a handful of children which meets with some of the costs to pay staff.

The aim of the fundraiser was to raise sufficient funds to buy and construct a climbing frame and slide for the children's playground. Sufficient funds were raised

to buy, ship and successfully construct the play equipment. As a result of the charitable support of the agents UPSAT, transportation of goods from the UK to Nigeria were subsidised which significantly reduced our spending on this important undertaking.

This installation has allowed the children to enjoy participating regularly in imaginative play, enhance their physical co-ordination as well as their social and emotional well-being. The children have also learned to take turns in their play and interact with each other empathetically.

The School's Progress to date-An Economic context:

The school has continued to grow from strength to strength despite the significant challenges it has countenanced in maintaining the daily financial running of the premises. A downturn in the economic climate in Nigeria caused by a rampant increase in inflation in 2022 to approximately 20.8%. The price hike of essential commodities such as food (up to 23%), petrol, as well as other energy-based utilities, has warranted a cost-effective approach to spending in the maintenance of the running of the school. This has allowed the establishment to continue to support and provide high quality free education for 9 children between the ages of 1 to 5 years. This is more poignant considering the fact that the National Bureau of Statistics reported that 63% i.e. 133 million Nigerians lived below the national poverty line.

There is further scope to do more to meet with the future objectives and activities of the school. There is significant potential to improve and widen its facilities by way of action plans devised by the charity's governing body in close collaboration with the school's manager/founder and other stakeholders. The plans that intend to be action are to:

1. Recruit a fundraiser to increase funds for larger projects such as establishing the primary school build.
2. Undertake our annual "Come walk with me" fundraiser to raise £4-6K to purchase a minibus to transport the children to and from school in light of the soaring and thus prohibitive costs of transportation.
3. Undertake more outreach work so that we can increase the number of pupils in attendance to meet our target number of 12
4. Develop a library hub to 21st century standards
5. Develop the primary school classrooms for 40-60 places

Closing remarks: The charity and its stakeholders have come a long way and have endeavoured to meet with their aims this year as in previous years. We will continue to work in a collaborative manner to meet with the above objectives. In doing so we are confident that the school that will continue to excel in providing an enriching and high standard of education that every impoverished child in Enugu should have the opportunity to enjoy to maximize their life chances.

Executive Director's Overview

Introduction

This annual report is prepared in accordance with the Charities Commission Act and outlines the performance, challenges, and key statistics relevant to our charity, Educate an African Child (Charity Registration Number 1197100). Our mission focuses on improving educational access for underprivileged children in Nigeria, specifically the Igbo State region.

Aims, Objectives, and Purpose

Aims:

Educate an African Child aims to enhance educational opportunities for children in Nigeria, particularly those from vulnerable families facing socio-economic barriers.

Objectives: These are to:

Advance the education of the pupils at Joseph and Agnes Educational Foundation in Enugu State Nigeria by providing and assisting in the provision of facilities for education at the school.

Develop the educational capacity and skills of the members of the socially and economically disadvantaged community of Nigeria in such a way that they are better able to identify and meet their needs to allow them to participate more fully in society. ????

Purpose:

Our core purpose is to ensure that every child has access to quality education, enabling them to break the poverty cycle so as to build a better future for themselves and their communities.

Achievements

Despite the economic and logistical challenges, Educate an African Child has made significant strides over the past year to meet their aims and objectives. Below are some specific examples of our achievements:

Partnerships with Local Organisations:

Established partnerships with local community groups to increase the number of outreach visits to the places where women and children are commonly found begging for food and money. This is a very challenging task as it can sometimes take more than a year to persuade an individual to leave the perceived security of begging on the streets.

Challenges

In addition to the challenges outlined previously, the 2021-22 annual return highlighted several additional challenges that have continued to impact our operations:

A lack of awareness or acknowledgement of Impact of Poverty:

Many communities in Igbo land lack awareness of the real impact of extreme poverty and generational educational poverty, particularly for girls and widows. Ingrained societal attitudes towards education, particularly for girls and marginalised groups, pose challenges in ensuring equitable access to education.

Volunteer and staffing challenges:

The charity continues to face difficulties in recruiting and retaining qualified volunteers and staff, exacerbated by economic pressures and limited funding for competitive recompense.

Maintaining long-term sustainability

Maintaining the long-term sustainability of educational programs is challenging due to fluctuating funding sources and increased operational cost. This has limited our ability to plan and implement initiatives effectively.

Financial challenges

Based on insights from the 2021-22 financial report, Educate an African Child has faced specific financial challenges:

Reduced financial donations:

The charity experienced a decline in individual donations and sponsorships. This has been as a result of the economic downturns affecting donor capacity. This reduction impacted our funding especially

as most of our income is generated from individuals residing in Nigeria and the UK. Both populations have experienced significant economic hardship in light of the major increases in inflation and other domestic fiscal matters that have occurred in the last 2 years particularly in Nigeria.

Funding Dependency:

High reliance on a limited number of funding sources has made financial stability precarious. Any reduction in support from main donors can significantly affect our operational budget. We desperately need to attract more funding so more reliable and consistent funding streams can be created.

Increase in operational costs:

Rising costs of essential supplies, transportation, and logistics have outpaced the rate at which our funding has increased. The rampant enhancement in inflation rates in Nigeria has further increase running costs of the school in real terms. This has impeded our ability to retain our key teachers as their monthly income is insufficient to maintain a reasonable standard of living as a result of the ever cost of transport. Recruitment of new/replacement staff remains equally difficult for the same reasons. This therefore restricts our ability to increase our outreach operations and intake to meet with our annual recruitment targets.

Administrative expenses and sustainability concerns

The school need to employ a funding development officer as well as more administrative staff. This has been hampered by the increased operational costs required to run the school. This includes a reduction in the percentage of funds available for maintenance of marketing and social media. It is imperative that a re-evaluation of budget allocations and fundraising strategies is undertaken to enable the school to be able to eventually employ a funding development officer who can then take on the chief responsibility of providing the consistent funding stream that the school so desperately requires.

There is clearly a pressing need for long-term funding commitments seeing that short-term grants and the current funding cycles eg yearly sponsored walk do not align with our strategic goals for sustainable educational impact.

Statistical data to provide an Economic and social contexts in Igbo states

Literacy Rates:

Current literacy rates in Igbo State are estimated at 62%, according to the National Bureau of Statistics. This figure is significantly lower in rural areas, where literacy can drop to as low as 50%.

Poverty Rates:

Approximately 43% of the population in Igbo State lives in poverty, severely limiting their ability to afford school fees and educational materials (National Bureau of Statistics, 2023).

Cost of Living crisis:

The cost of essential goods such as food and utilities are rapidly rising, with a report from the Nigerian Bureau of Statistics indicating that the average price of food items has increased by 32% in the past year, directly affecting household budgets.

Food Inflation:

The National Bureau of Statistics reported that food prices increased by over 30% in 2023. This rise has severely impacted nutrition, with 20% of households reportedly experiencing food insecurity, further hindering children's ability to learn effectively.

Academic context

Pupil numbers for the nursery and pre-school sections fell slightly from 8 to 6 mainly as a result of families being forced to vacate their dwellings and move from one location to another.

We proudly promoted 6 children to primary 1 stage. This was highly satisfying to witness especially as they had made leaps and bounds in advancing their STEM skills as well as the ever important ,reading writing and numeracy skills commensurate with this stage. Their IT skills

have however not shown the level of improvement expected this being partly due to infrastructural limitations such as issues with connectivity.

The teacher /pupil ratio is slightly below our target. This currently stands at 1: 8 instead of the expected 1:10.

There are a number of factors that have contributed to this discrepancy. Firstly, we work with hard to reach families living on the streets of Enugu. Who as aforementioned, are extremely difficult to persuade to leave behind this street life. Secondly, more volunteers are needed to assist us with the outreach programme. Currently, only the Founder Ms Amuzie, is able do this work as the “boots on the ground” contributor. We are however endeavoring to increase this activity by liaising with more charitable/volunteer grassroots organisations associated with the field of social care. Thirdly, the rise in social and economic hardship due to the government has had the impact outlined earlier in this report. Non-inclusive policies such as removal of fuel subsidies, have in turn increased the cost of food fuel and utilities, and in particular housing accommodation (driven mainly through private landlord/ accommodation). This has resulted in parents not being able to afford to meet the transport costs required to bring their children to school. This can often culminate in parents needing to make the difficult decisions between meeting transport costs or the family suffering from a lack of food for that day.

Unfortunately, some families have experienced eviction from dilapidated buildings as a result of owners needing to carry out refurbishment causing homelessness. We lost 2 of our nursery children as a result of this . By the end of September 2023, we found that it was not possible to finance the children’s travel expenses because of increased financial restrictions.?????Female children who had happily progressed into the primary level.

We are truly happy to report. That's the children progressing from preschool. We re already able to read 2,3 and 4 letter words phonetically. This demonstrates the teaching staff's commitment effort and hard work through group activities 1:1 attention as well as challenging the children's abilities. Notwithstanding, they are family backgrounds, generational illiteracy as well as the effects of educational

poverty, We are truly happy to report that our children approximating more rapidly and confidently. As would have been expected bearing.

In mind that they do not have home support or any additional out of school. Support and curricular activities.

At Joseph and Agnes We endeavor 2 develop our children's learning through discovery. This also involves developing their curiosity.They are questioning skill as well as their social skills. This has made possible With the support of a uk based link schools such as UCL nursey and St Winefred's Primary schools. We are truly grateful to receive their support in terms of teaching/learning resources, especially books and furniture.

Furthermore, without the support of shipping agents such as Opsat Ltd and Worldwide Links in form heavy discounting to transport items back to the school. We would not be able to finance such quality, play equipment, furnishings, and resources, enhancing our provision to the children.

Breakfast and lunch. Most of them receive simple lunch and / or breakfast if they come to school without eating. This purchase is on a daily basis, ensuring that no child is trying to learn on an empty stomach.

Our greatest challenges:

1. How to engage with the mothers to help them address their multiple dimensional facets of their needs of their family, the most essential being the ability to get a roof over their heads. The nature of their poverty doesn't allow them to earn or make sufficient money beyond what could be eaten in the short run. Homelessness is often caused when the husband (main bread winner dies either at the hands of the Fulani Herdsmen attacking them in the villages and homes, forcing them to escape to the closest neighbouring state. The majority of our families are from Ebonyi State, and they families escapes to Enugu State as refugees begging in the streets.

2. Lack of school transport ie school bus would increase our ability to economically reach more children pushed out further into more rural lands. Our 2024 'Come Walk with Me' event will aim to raise sufficient money to purchase a bus.

3. Staffing Needs

The need for staffing both for Educate An African Child and Joseph and Agnes Educational foundation is rapidly on an increase beyond what the Founder/Exec Director and Trustees can voluntarily manage in the medium to long term. The charities are now at a developmental stage requiring the employment of a fundraiser/ administrator and teachers and headteacher in Nigeria. Even if we can encourage more women and their children of the street, recruitment difficulties for well qualified and experienced teachers would be a hindrance. Rapidly increasing transport cost dissuading experienced and qualified teachers being prepared to travel. Long distances to work, no matter how good the school is. Our only option is to remain competitive. And in order to do that, we will need to increase our salaries and offer some benefits to the staff.

Future plans.

1. Celebrate Labour Day
The staff will teach the parents basic literacy, including writing their names and sign in signatures.
2. Student exchange via video of zoom conferencing with partner. Schools in the UK
interact and share their views. Learn about each other's culture language and heritage.
3. Environmental/hygiene awareness, day involving parents and children from local private schools School bus drivers awareness. Day to improve their skills and update them on the road safety rules and regulations as well as basic emergency. In case of accidents here, they will discuss the rules and responsibilities as school bus drivers.
5. introduction of zoo/WhatsApp story nights for those children whose parents have access to Android or iPhone zoom facilities.

We will involve UK parents who read to their children at night to also allow are children to listen to the stories.

6. Engaged in advocacy campaigns in order to raise awareness and promote the children's rights to early childhood education we hope to begin a realistic dialogue with state education authorities to improve school facilities and resources.

Conclusion

Despite the challenges presented by economic conditions and social factors in Igbo State, Educate an African Child remains committed to its mission. We aim to adapt our strategies to address these obstacles and continue to seek partnerships and funding to ensure that every child has access to quality education.

Thank you for your continued support in helping us make a real difference to the lives of children in Nigeria as we endeavor as best we can to enhance their life chances

Educate an African Child

Financial Statement

For Period 1st January 2023 to 31st December 2023

	2023	2023
Incoming Resources		
Monthly Donations	2224.00	
Go Fund Me	28.88	
CAF Interest Received	2.95	
Total Income Resources		<u><u>2,255.83</u></u>
Resources Expended		
Direct Expenses		
Salaries and Running Costs	1,246.00	
Total Direct Expenses		1,246.00
Admin & Management Expenses		
Website Hosting	150.00	
CAF Monthly Fee	60.00	
Total Admin & Management Expenses		<u>210.00</u>
Total Expenses		<u><u>1,456.00</u></u>
Excess Income / Expenses		799.83
Opening Balance		2,204.90
Closing Balance		3,004.73
<u>Statement of Assets & Liabilities as at 31st December</u>		
<u>2022</u>		
Fixed Assets		0.00
Current Assets		
Cash at Santander	1561.78	
Cash at C.A.F.	1442.95	
Total Current Assets		3004.73
Current Liabilities		0.00
Net Current Assets		3004.73
Total Assets less Current Liabilities		3004.73
Long Term Liabilities		0.00
Net Assets of the Charity		<u><u>3004.73</u></u>

EDUCATE AN AFRICAN CHILD

England & Wales - Charity number 1197100

Accounts

Educate An African Child (EAAC) - registration no:1197100
ANNUAL 'TRUSTEES' REPORT - JANUARY 2021 - DECEMBER 2022

Educate An African Child Charity present their annual report and audited accounts for the year ending 2022 and confirm they comply with the requirements under the Charity Commission for England and Wales.

The Chair's Summary

We were so happy when we received our charity status for Educate an African Child in December 2021.. The main goal is to raise money to fund the work of our Nigerian based charitable school in Enugu State, which provides nursery and primary level education for the children of families who are unable to afford a basic standard of education even via the state schools. The school thus provides an excellent standard element of elementary education for children of families that are living in abject poverty. These clients are mainly destitute families living in very temporary accommodations or begging on the streets. Often than not the parents struggle to feed and clothe their children and live on a subsistent standard of living.

Our support to Joseph and Agnes school aims to provide a holistic education to its pupils that will provide a solid fundamental standard of learning to provide a good start to their academic journey and through this improving their life chances and opportunities for social mobility. We will assist Joseph and Agnes school to kit out a well-equipped facility that provides a high standard of teaching and learning, as well as social and emotional support to the children. The charitable work of Educate an African child raises funds to sponsor the education of each pupil and in doing so provides the books, uniform, writing materials, play and other learning equipment, that will facilitate the pupils full engagement in the learning experience. This will aim to develop the pupils as confident, well-rounded learners who can realise their true potential both academically and personally, using a holistic ethos in the educational approach. This year we are delighted to report on the achievements and successes in supporting Joseph and Agnes Educational Foundation through the hard work and dedication of the school staff as well as the governing body and stakeholders who have worked collaboratively to achieve the following key accomplishments to date:

1. Setting up the nursery which currently has 9 pupils enrolled in the school aged 1-8yrs.
2. Recruitment of a full time nursery teacher and one primary school teacher and a Facilities Officer thus providing employment opportunities for the local population and providing contribution to the local economy and the local community.
3. Provision of care and mentoring for the families of these children thus providing holistic support for the family of pupils.
4. Provision of new full school uniform including PE kit for each pupil.
5. Holding an annual "Come walk With Me "sponsored fundraising event with encouraging support from a number of regular participants.

There is further scope to do a lot more to meet with the future plans of both the charity and the activities and status of the school. There is significant potential to improve and widen its facilities as an educational establishment by way of achieving the future objectives put together by the charity's governing body

through close collaboration with the school's operational management and other aforementioned stakeholders. These future objectives and plans that we intend to action in the near future are stated elsewhere in the report.

1. I am excited to realise the development of the new primary school provision so that This will be able to progress our pupils aged 6-11 yrs.
2. Extend current educational opportunities of the parents in parenting skills, basic literacy and attitudes to help forward pupil progress.
3. Extend the current curriculum to include more extracurricular activities such as day trips to increase pupils' awareness of their local/global environment.
4. Acquire a minibus for transportation of pupils who are forced to live in more rural areas. The bus could also be used for regular excursions.
5. Improve staff training opportunities e.g. online courses on health and safety, effective teaching strategies and further development of the school curriculum to enhance pupil learning.
6. Generate more lucrative funding streams in the UK eg from British companies/organisations by providing more opportunities for the public can donate to the charity via e.g. social media.
7. Further develop the schools' links with the local communities in Nigeria.
8. Further encourage the parents of the pupils to volunteer their time in support of the school's day to day activities, thus investing in the school's progress.
9. Foster links and potential twinning of the school with a well-established London/UK based nursery and primary school that could provide opportunities for teachers and teaching assistants to exchange novel and effective teaching and learning ideas, as well as cultural learning opportunities for the children as future global citizens.

The charity and its stakeholders have come a long way and have endeavoured to meet with their aims. We will continue to work in a collaborative manner to meet the above objectives. In doing so I am confident that the school will continue to excel in providing an enriching and high standard of education that every child in other parts of Nigeria should have the opportunity to enjoy and maximise their life chances

Director's Report - 2023

Introduction:

I am honored to present the first-year Director's Report for 'Educate an African Child' for the year 2023. 'Educate an African Child' gained charitable status in December 2021 with the aim of supporting the Joseph and Agnes Educational Foundation, a registered charity since 2020, in its mission to provide free education to vulnerable and destitute children from nursery to primary school age in Nigeria

Key Achievements:

Expansion of Educational Access: Through the support of 'Educate an African Child,' the Joseph and Agnes Educational Foundation has successfully expanded its reach to more vulnerable children in Nigeria, providing them with access to quality early education.

Infrastructure Development: Significant progress has been made in the development of educational infrastructure, including the establishment of new classrooms, learning materials, and playgrounds, providing a conducive environment for young learners.

Community Engagement: 'Educate an African Child' has facilitated several community engagement initiatives to raise awareness about the importance of early childhood education, involving local leaders and families in the process.

Partnership Development: The organization has forged strategic partnerships with local authorities, educational institutions, and businesses, fostering a collaborative environment for the sustainable growth and development of the Joseph and Agnes Educational Foundation.

Challenges Faced:

Socio-Economic Constraints: Operating in resource-constrained environments has present challenges in maintaining a consistent level of support for the educational programs, emphasizing the need for sustainable fundraising efforts.

Logistical Hurdles: Navigating logistical challenges such as transportation, access to remote communities, and ensuring the safety of students and staff members has been a primary concern for the organization.

Future Outlook

'Educate an African Child' is committed to developing sustainable funding strategies and exploring innovative partnerships to ensure the continued growth and impact of the Joseph and Agnes Educational Foundation.

The organization aims to introduce technology-driven learning solutions, empowering educators and students with the necessary tools to enhance the quality of education provided.

'Educate an African Child' will focus on implementing comprehensive training programs for local educators and staff, empowering them with the skills and knowledge needed to deliver high-quality education effectively.

I extend my sincere gratitude to our donors, partners, and the dedicated team at 'Educate an African Child' and the Joseph and Agnes Educational Foundation for their unwavering support and commitment to our shared vision of providing free education to vulnerable children in Nigeria.

Looking ahead, we remain steadfast in our dedication to the mission of 'Educate an African Child.' With the continued support of our stakeholders, we are confident in our ability to create a lasting impact on the educational landscape in Africa.

PROFILE

Educate an African child was set up to support the work of Joseph & Agnes Educational Foundation (JAAEF) and other similar projects it may take on in the future. This charity is still at its early stage of development.

JAAEF School is based in Enugu State, Eastern Nigeria. We believe every child has a right to education. That is why we support free quality early years learning for all girls and boys (ages 0 - 11 years from vulnerable and endangered backgrounds. A dream came into reality on the 3rd March, 2020, when we opened our doors to our first child. Subsequently our charity status was granted by the Charity Commission in 2021. JAAEF is also a registered charity with the Nigerian Corporate Affairs Commission since January 2020, Whilst EAAC has 5 trustees and 5 core members who are actively involved in the planning and decision making of both charities.

The children we enroll in JAAEF school are the most vulnerable in our society. They are mainly from lone parent families and usually homeless and in crisis when they are referred to us. We provide the children with free education, following the combined English and Nigerian early years and early childhood curriculum which includes social and physical activities. We provide a structured educational environment but we also take children's individual needs into account. We provide an educational environment where each child can develop and their potential, building their self-confidence and self-esteem.

Our school runs from January to December with terms time dates, which vary slightly each year. We have a two-week Christmas break in December, one-week easter break (March or April), six weeks summer break (end July - early September) and one week in October.

Our children are given breakfast and meals and refreshments freshly prepared at the school daily. Our pupils are also provided with a smart but comfortable school uniform and PE kit, with our school logo for free. This gives us our own distinct identity and promotes pride, self-confidence, and a feeling of belonging for our children.

Africa has the highest rate of out of school children and adolescents globally. However, girls remain more likely to be permanently excluded from education and are at a higher risk of being left behind. This reality calls for increased efforts to ensure girls are given an education so they become independent, confident and have equal access to all opportunities. EAAC through JAAEF supports education for both boys and girls. However, we are firm supporters of social justice issues and this starts with ensuring girls have an education.

OUR AIMS

The aim and objective of EAC is to advance the education of the pupils at JAAEF in Enugu State Nigeria by providing education and teaching facilities for children at the school. We offer early years provision, primary education and basic life skills to children from the age of 0 -11 years, who are vulnerable due to their poor or disadvantaged backgrounds.

Our main aim is to change the lives of these children and ensure that they receive an education which will hopefully rescue them from the generational cycle of illiteracy and poverty. In doing so, we are preparing our children for their next stage in their education and with opportunities and prospects for the future which may not have been accessible to them. We also provide parents with help in the form of moral support, practical advice and time limited funds. The funds might contribute towards food, rent or purchasing clothing for a job interview. We provide information regarding planning for the future and help them with parenting and life skills. EAC supports JAAEF through charity events, e.g., selling donated goods in Nigeria and the UK. We are also funded by personal sponsorships, cash donations and charity activities such as an annual sponsored 10k walk. We are also able to support some of our children and families in partnership with International Charities such as the St. Vincent De Paul and other church groups in the community.

JAAEF OPERATIONS

OUR OBJECTIVES

To provide excellent academic and social experiences for the children at JAAEF school, it is important to us that we strive to maintain excellence so we are able to provide the best education and experiences for the children. One of our core values is that every child matters, with the principles being they should be safe, healthy, enjoy, achieve, have economic success and be able to make a positive contribution to life.

Our key objectives include:

- Increase pupil numbers in our school through more out-reach
- Increase the numbers of teachers and staff in our school
- Create the primary section of our school, especially the school library
- Increase fundraising and gain sponsorships for pupil places and staff wages
- Increase fundraising and gain sponsorships for the school uniforms, meals, play materials & books
- Increase funds for, e.g., school minibus, play equipment, computers, etc
- Increase partnerships and links with local and regional charities for support services and funding
- Continue to provide free education and support for our children
- Continue to develop our pastoral care for children and parents
- Continue to provide a learning environment which is caring and nurturing

ACADEMIC

At JAAEF we use the English Early Years Foundation Stage and Nigerian Early childhood curriculum. We plan to follow a UK and Nigerian primary school curriculum for 5-11 years olds.

Our Teachers are expected to hold a minimum of (Nigeria Certificate in Education (NCE)) and or bachelor in education preferably to be Teachers Registration Council of Nigeria(TRCN) registered.

Staff follow our induction programme which is delivered in house and externally via zoom.

Unqualified teachers are required to be studying towards any of the acceptable qualifications.

Most children come to our school speaking their native language and not speaking any English. All the children in our school are working towards attaining a level of English suitable to their age and developmental stage.

JAAEF school is a charitable school which seeks to benefit the local community through the pursuit of its stated aims. Importantly we have a caring ethos which is serving our local community and society.

The areas of learning for children at early learning years:

- Communication and language
- Physical development
- Personal, social and emotional development
- Literacy
- Mathematics
- Art, painting, drawing
- Music
- Sports
- Understanding the world

The areas of learning for children 5- 11 years:

JAAEF have been able to provide the children with education in a stimulating environment and offer the curriculum mainly through teaching with reading books, writing, drawing, games, play and social outings. We have an outdoors play ground with play equipment, but we still seek to expand. We also sing along with the children to teach them English and Nigerian nursery rhymes.

The children's educational attainment at early years is not evidenced through test or any form of exam but through the teacher's general assessment of their personal growth and achievement. As well as their progression with speech, written skills and social skills.

We also nurture our children. The younger children benefit from having a short sleep time in the afternoon, or when needed. The children are mainly taught together as a group due to the small numbers in the school. However, all children are given one-on-one time with the Teacher each day, so they can develop their individual skills and also develop their relationship with a trusted adult, should they want to disclose or talk about anything. We

recognise that the children are at different ages and have individual needs and we are aware of their varied abilities and the teaching takes this into account. For example, one of our pupils was admitted at the age of 5 and is now progressing to primary level at the age of 8.

We maintain regular contact with parents on a daily basis, when they drop children off and collect their children from school. Parents are given regular information and updates about their children's social and academic progress. In some cases, we are working directly with the parent so we have close contact. This is very useful for us, as having close contact gives us indicators of when that parent requires a bit more support.

OUR PUPIL

The Director and Trustees of JAAEF & EAAC are continually reviewing the fundraising and sponsorships profile, so we are able to raise more funding and sponsorships to increase pupil and staff numbers.

During 2022, there were seven pupils on roll at JAAEF school. The estimated cost of educating one nursery child annually is £500/600 and £800/1000 at primary level.

Pupil numbers, gender and age:

Name: Initials	Gender:	Age
C.O	Female	4
K.A	Female	4.5
O.O.Snr	Female	8
U.O	Female	6
K.I	Female	3
U.I	Female	1.5
M.	Male	5

STAFF, CONTRACTORS AND VOLUNTEERS

During 2022 there were Six people working at JAAEF school:

Name of Staff Member	Position / Role:	Start Date to End Date:	Paid Salary / Wage/Expenses
Tina Amuzie	JAAEF Founder and Executive Director (Acting Head Teacher)	2016	Unpaid
Felica	Nursery Teacher	Current	Unpaid
Chinwe	Facilities officer/Security	Current	N35,000 PM
Emmanuel Ani	Administrative/Outreach worker	As needed	Contracted labour
Christopher Ejiofor	Information technology (IT)Support	As needed	Contracted Labour
Marie-Anne Nnajofofor	Teaching Assistant	As needed	Intern

FINANCES: INCOME AND EXPENDITURE ACCOUNT

1. Income - fundraising, donations, gifts, other
2. Spending
3. Activities inside of the United Kingdom
4. Activities outside of the United Kingdom
5. Trading subsidiaries
6. Structure and membership

Educate an African Child Financial Statement For Period 1st Jan 2022 to 31st Dec 2022

	£ £
Incoming Resources	
Donations	5145.78
Sponsored Walk	2,230.57
Total Income Resources	7,376.35
Resources Expended	
Direct Expenses	
Salaries	3,080.00
T Shirts for School	162.00
School Uniforms	250.00
Active Garden Play Equipment	3,165.00
Transportation of Active Garden Play Equipt	515.00
Shipment of Active Garden Play Equipment	1,652.50
School Teaching and Learning Resources	965.70
Total Direct Expenses	9,790.20
Admin & Management Expenses	
Printing and Stationery	230.00
Total Admin & Management Expenses	230.00
Total Expenses	10,020.20
Excess Income / Expenses	(2,643.85)

Statement of Assets & Liabilities as at 31st December 2022

Fixed Assets	0.00
Current Assets	
Cash at Santander	704.90
Cash at C.A.F.	1500.00
Total Current Assets	2204.90
Current Liabilities	0.00
Net Current Assets	2204.90
Total Assets less Current Liabilities	2204.90
Long Term Liabilities	0.00
Net Assets of the Charity	2204.90

Notes in support of the AccountEducate An African Child

Board of directors

Chairperson: Janet George

Secretary: Iram Bashir

Honorary Treasurer: Hemuna Pather-Carr

Directors of Joseph and Agnes Educational Foundation: Helen Ominibohs, and Gwen Abiola-Olake

Members: Caroline Ene, Sandra Jahi, Cynthia Skeete, Mary Ukah

Bankers:- Charities Aid Foundation

Charity Registration Number: 1197100

Address: 1 Adler Court, Earlham Grove, Forest Gate, London E7 9DT

Company Registration Number for Joseph and Agnes: 136570

Address:- 81 Nike Lake Road, Trans Ekulu, Enugu, Enugu State, Nigeria.

The charity has followed the Accounting Policies as follows:

Basis of Accounting:

The financial statements for the period 1st January 2022 to 31st December 2022 have been prepared in accordance with the historical cost convention and the Statement of Recommended Practice (SORP) - Accounting and Reporting by Charities, issued in January 2015.

Income Resources:

Income is recognized as the amount receivable during the year.

Structure, Governance, and Management: - (see page 13/14 for more detail)

The trustees, members and voluntary executive director oversee the governance and management of the charity, ensuring compliance with the charitable objectives and legal obligations.

Appointment of Trustees:

Trustees are appointed based on their skills and genuine interest in the charitable cause. Recruitment processes include discussions on responsibilities, duties, and liabilities, ensuring reliability, trustworthiness, and commitment to the charity's mission.

Risk Mitigation:

The charity implements robust measures to mitigate risks, including appropriate recruitment procedures, internal financial controls, and monitoring of economic situations to assess potential impacts.

Income Generation:

Funds were generated through sponsorship, donations, and fundraising events such as walks, primarily to support the operational costs of the school and staff salaries.

Management and Administration:

The charity ensures that all expenditures align with its charitable objectives, with provisions made for necessary administrative and compliance-related expenses.

Reserves (Working Capital Policy):

The deficit from the previous year, as of 31st December, does not include funds deposited with CAF Bank.

Resource Utilization:

Expenditure is charged to the Statement of Financial Activities, including Value Added Tax, when incurred.

Funds Held by the Charity:

The charity holds unrestricted funds that can be utilized at the discretion of the Trustees in line with the charitable objectives.

Charity Priorities:

Short Term: Raise funds for the conversion of the first floor into primary school classrooms and library. Additionally, secure funds for the purchase of a school bus to facilitate transportation for children residing at a distance from the school.

Medium Term: Raise capital to employ an experienced Fundraiser to further the charity's fundraising capabilities.

Long Term: Expand services to children in orphanages and establish a second school in Delta State.

Financial Compliance and Accountability:

The Trustees maintain accurate accounting records in adherence to the Companies Act 2006. They actively protect the charity's assets and undertake measures to prevent and detect any instances of fraud or irregularities.

Approved by the Board of Trustees.

Full Name Hemuna Pather-Carr
Position: Honorary Treasurer
Date: 28th October 2023

COMMUNITY SERVICE PARTNERSHIPS

St Vincent De Paul is an International Charity we work closely with in Nigeria. Their charitable remit is wide and includes work with vulnerable women and families in Nigeria. These can be sole parents, single mothers, widowers etc. Who are homeless, doing unsafe work on the streets or/and are struggling to feed themselves and their children. This charity makes referrals to us when they are aware of children who are on the streets with their mother's (working or begging) within Enugu State.

Together, we plan how the parent will bring the child or children to our school and how we support the parent, so they are in a position to eat, find somewhere to live if they are homeless and pay rent. The funds allocated to a family will be limited but it will assist them with gaining some stability. Our support to the parents could include providing breakfast and/or lunch for the children - often the children miss out on these all important dietary requirements. The support to the mother(s) is also in the form of mentoring, to help with building the parents confidence in child care, getting work or keeping them and their child safe. It is important we work in partnership with other charities who can give additional support to the parents, to help them settle into a safe lifestyle which gives continuity for themselves and their children.

FUTURE PLANS: JAAEF

JAAEF and EAAC intend to continue their current strategies of maintaining the school's position as a free fee-paying school for vulnerable children in the local community. Also, to maintain our high standard of teaching and the caring ethos for the child and their families. Our charity also intends on raising the school's profile with the aim to gain much higher donations and sponsorships. The school also relies on donations/contributions made by volunteers and for all aspects of its maintenance including utility bills and the building maintenance, so fundraising, sponsorships and donations are extremely important for us.

Our vision for the future is that we will have three classes of children in age groups of 0 -1 years, 2 - 3 years and 4 - 5 years olds. We have the space capacity for forty children at the nursery stage and up to sixty children for primary level. We would like to match that with a ratio of one teacher per class. Our Teaching staff team will comprise of:-

- Head Teacher (currently the position is covered by the Founder).
- Qualified NurseryTeacher
- Qualified PrimaTeachers
- Teaching iAssistants
- Teaching Outreach Worker (links to community)

In addition to the teaching staff, we would like to expand our staffing Team to include these paid roles:

- Fund-raisers
- Security Officer
- Cook and Kitchen Assistant
- 2 x Cleaners
- Administrator
- IT Specialist

FUTURE PLAN: EAAC

We of course will need the funds to accomplish our aims. Our immediate plan will be to raise funds to employ an experienced Fundraiser, who will network and forge positive relationships with

We would also like to increase our support to the parents/families so their children are able to remain in the school until their move onto secondary school. The unstable lifestyles of most parents mean they need to move out of the state or become homeless again are not able to sustain their child's -school attendance.

Our future plans also include supporting the local orphanages. The children in most of these establishments are being given physical care but unfortunately, they don't have the amenities to educate the children there. The aim is that when we have the funding for a fuller staff team, this will include an outreach Teacher who could go to the orphanages to provide early years education and support the workers there with providing more stimulating play, games, song, books and interaction with the children, or in some cases, where possible a child could enrol for education at our school.

OUR ETHOS

Our ethos is on the development and achievements of our pupils in a safe, caring and nurturing environment. Also, to continue to provide help and support to vulnerable parents. We operate under the Charity Commission equal opportunities and diversity policy and are committed to a working environment that is free from discrimination, bullying and harassment. We extend this same respect to the parents and families of our pupils and all organisations we have links with.

STRUCTURE, GOVERNANCE AND MANAGEMENT

The Founder/Executive Director, Trustees and Members are responsible for the overall management and control of EAC and IAAEF. We meet at least 4 - 6 times a year with the other charity members. These meetings are structured with agenda items for discussion and written minutes taken.

The work of implementing decisions, funding raising and policies are discussed at meetings and usually undertaken by the Director, trustees and members. The Director and Trustees are responsible for the preparation of papers and management accounts and the review of financial matters.

All trustees and members give of their time freely and no remuneration or expenses were paid in the year. No other charity member received any benefit from funding raised or sponsorship

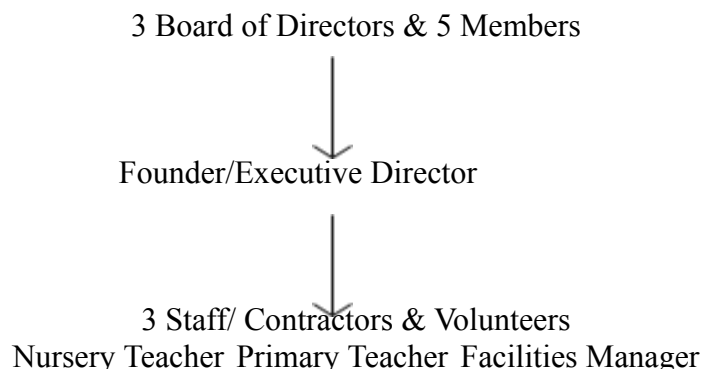
ORGANISATION MANAGEMENT

The day to day running of the JAAEF is delegated to the Head Teacher (in the absence of the Head Teacher), the Founder and Executive Director is supported by the Teaching staff. The Director undertakes the key leadership role overseeing educational, pastoral and administrative functions in consultation with the staff. The day-to-day administration of the school is undertaken within the policies and procedures approved by the Trustee's. The

Director oversees the recruitment of all educational staff, administrative and non-teaching staff.

GOVERNANCE, MANAGEMENT OF RISKS

Organization Structure



The Executive Director and Board of Trustees are responsible for the overseeing of the risks faced by the school. If risks are identified they are assessed and controls for this are put in place. A formal review of the charity's risk management processes is undertaken on an annual basis.

SAFEGUARDING:

We take safeguarding extremely seriously, especially working with vulnerable children and their parents. We have an easy to understand safeguarding policy that outlines our commitment to the safety and well-being of children, staff, and all individuals associated with our educational projects.

We ensure that all individuals involved in our projects, including employees, volunteers, and partners, are made aware of the safeguarding policy, which includes our child protection procedures that appropriate response in case of any safeguarding concerns or incidents. This includes reporting mechanisms and steps to address and prevent harm.

We try to conduct background checks and screening for all staff and volunteers who will be working with children. This includes checking references whilst checking criminal background checks can be a little challenging.

We have a code of conduct that outlines appropriate behavior and interactions with children. This code sets clear expectations for how staff and volunteers should engage with the children in our programs such as a no smacking rule.

We establish confidential reporting mechanisms that allow anyone associated with our projects to report concerns, incidents, or suspicions related to child safeguarding to the executive director who is the designated officer responsible for managing any concerns and actions..

We will collaborate with local child protection authorities and agencies to report and address any safeguarding concerns or incidents that require their intervention. We conduct regular reviews of our safeguarding policies and practices to ensure they remain effective and are being followed. Any necessary improvements are made. We maintain open and transparent communication with the children, their families, and the broader community about our commitment to safeguarding, the policies in place, and how to report concerns.

By implementing these safeguarding measures, we aim to create a safe and secure environment for the children and everyone involved in our projects. Our commitment to safeguarding ensures that we uphold the highest standards of care and protection for the vulnerable individuals we serve.

Management of risks

This is extremely important for Educate An African Child and Joseph and Agnes Educational Foundation. There are various risks that we try to manage.

We try to ensure that we manage our organisation transparently by implementing good accounting practices, regular financial audits, and some oversight from a suitably qualified and experienced bookkeeper and accountant. Budgets are set and all expenditures are regularly reported at board of trustees and members meetings ensuring that allotted funds raised are spent accordingly.

As we continue to formalise our operation, we are developing guidelines and standard operating procedures to help us streamline activities. We regularly monitor our operations and continually train our few staff/ volunteers to help us mitigate operational risks and reduce wastages.

We are striving to develop a strong governance structure that clearly defines the roles and responsibilities for the board of trustees and staff whilst ensuring that we comply with all relevant legal and regulatory requirements here in the UK and in Nigeria. We shall be introducing training and workshops on governance and compliance to help keep the team updated.

The work of Joseph and Agnes is quite unique in Nigeria and therefore it is important that we are seen as a highly honest, very trustworthy and highly respected institution. We therefore focus on maintaining a positive public image through transparent communication, regular updates to all our donors, sponsors, etc, doing all we can to avoid that might show us negatively in the eyes of our current and potential supporters.

We are looking to develop a sustainable funding strategy that includes diversifying funding sources for example building corporate relationships, better use of international volunteering and grant givings. Also investigate ways to foster partnerships with other organizations such as UK educational institutions and create other long-term fundraising plans such as income generating activities (charity shops? to reduce dependency on external funding.

We operate a good human resource system with clear policies and procedures, including recruitment, training, and appraisal systems. We foster a positive work environment, where the staff feel that they are part of the charity's journey.

We have good security protocols to protect the staff, volunteers, and the children/parents such as CCTV cameras. We also carry out regular risk assessments e.g when we go on external excursions. We are investigating ways we can invest in security measures such as insurance, emergency response plans, medical/ health care, and staff training for handling emergencies such as fire outbreaks.

All the above mechanisms hopefully will ensure sustainability and of our charity

KEY PLAYERS IN BOTH CHARITIES:

Name	Position	Date of Involvement	Location
Tina Amuzie	Founder & Executive Director	2016	UK/Nigeria
Janet George	Trustee (EAAC)	2017	UK
Tram Bashir	Trustee (EAAC)	2016	UK
Hemuna Pather-Carr	Trustee (EAAC)	2017	UK
Helen Ominiabohs	Trustee (JAAEF)	2017	Nigeria/UK
Gwen Abiola-Oloke	Trustee (JAAEF)	2019	Nigeria
Mary Ukah	Member	2017	UK
Caroline Ene	Member	2017	UK
Cynthia Skeete	Member	2017	UK
Sandra Jahi	Member	2017	UK

Educate An African Child

Address: 1 Adler Court, Earlham Grove, London E79DT

Phone number: +447956 08 9333

Registered Charity No. 1197100

Joseph & Agnes Education Foundation

Address: 81 Nike Lake Road, Trans - Ekulu, Enugu State, Nigeria.

Phone: +234 552 4424 / +234 889 9111

Email: enquiries@josphandagnesef.com or mellissabet1@aol.com

CAC Registration No: 136570