

UNANIMA THEATRE

ANNUAL REPORT



1st April 2023 - 31st March 2024

Charity Name | Unanima Theatre | Charity registration number | 1196242

TABLE OF CONTENTS

AIMS AND MISSION 1

OUR PURPOSES AND
ACTIVITIES 2

WHO WE SUPPORT 3

OUR FOUR AREAS OF
WORK 4

ACHIEVEMENTS &
PERFORMANCE 5

OUR TRUSTEES 6

FINANCES 7

FINANCIAL &
INDEPENDENT
REVIEW 8

DECLARATION 9



is an arts organisation that provides a variety of creative, cultural and campaign opportunities for learning disabled and autistic people, and the general public, in and around Mansfield & Ashfield.

Unanima is a National Portfolio Organisation for the Arts Council, and a charity that is run by co-CEOs Tracy Radford and Dr Brad English, and governed by a trustee board.

Unanima's vision is total equity for learning disabled and autistic people
within the arts and society

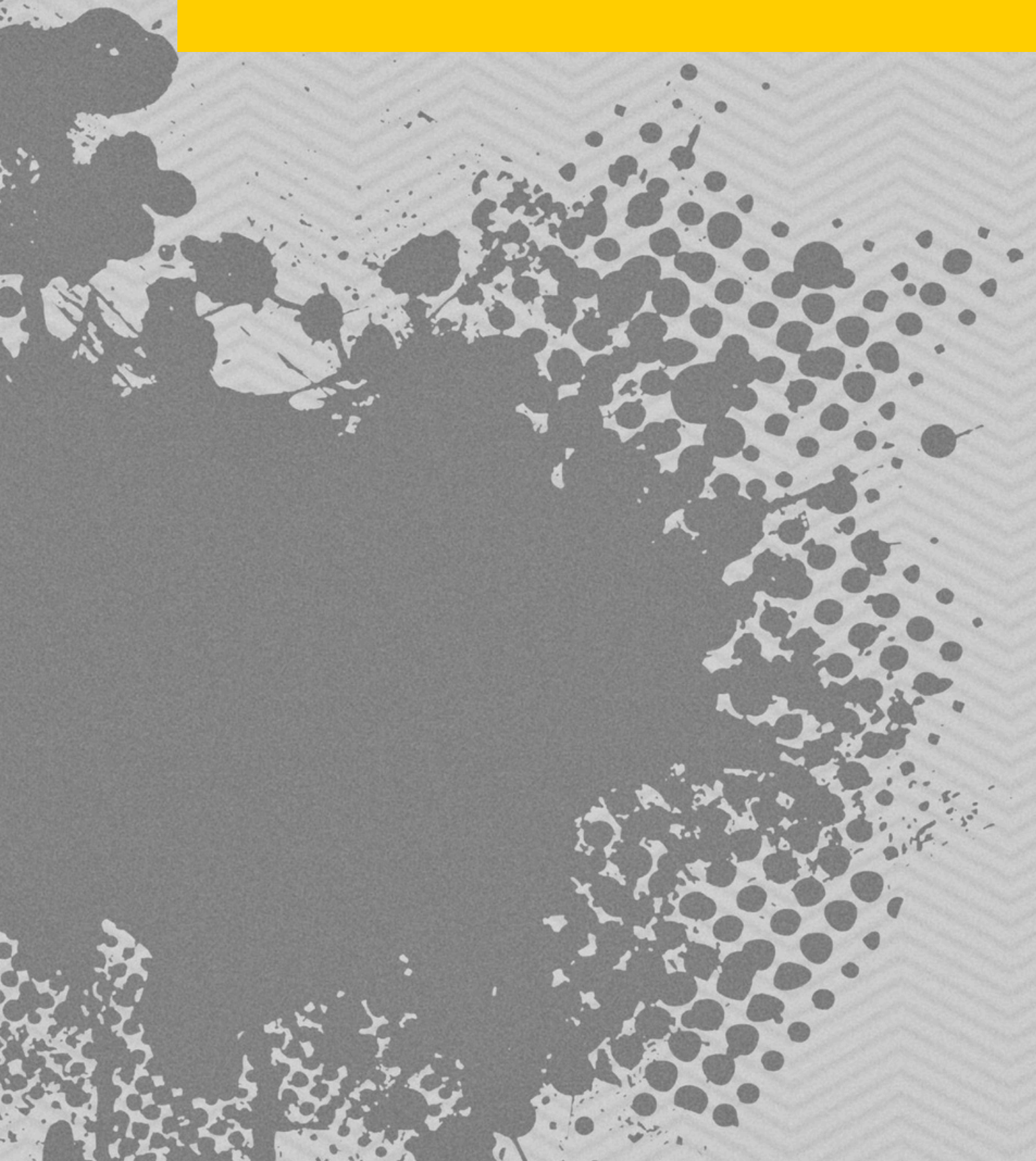


OUR PURPOSES AND ACTIVITIES

The purposes of the charity as set out in our governing document are:

1. The advancement of the art of drama and the performing arts for the public benefit by:
 - (a) providing opportunities for learning disabled and autistic people to participate in the arts
 - (b) the production and public presentation of dramatic work, presented and performed by learning disabled and autistic people;
2. The promotion of equality and diversity for the public benefit by:
 - (a) working for the elimination of discrimination in the arts on the grounds of cognitive impairment and neurodiversity
 - (b) educating and raising awareness in equality and diversity, in particular by using participation in the arts to challenge perceptions of disability
 - (c) cultivating a sentiment in favour of equality and diversity in the arts

WHO WE SUPPORT



Mansfield is ranked the 36th most deprived area out of the 32,844 LSOAs in England (Nottinghamshire Insight, Indices of Deprivation 2019), is a government Levelling Up area, and a priority area for Arts Council England.

Unanima aims to level up the opportunities for learning disabled and autistic people to enter, explore and pursue careers within the creative industries, and find innovative ways of ensuring this is achieved.

Learning disabled and autistic people experience **unequal educational outcomes** which restricts progress towards inclusion and opportunity. This in turn reinforces injustice, and this ultimately encourages discrimination and segregation within society.

Within the arts this ultimately manifests as a **lack of representation** of learning disabled and autistic people.

We imagine a future where Mansfield & Ashfield is a **nationally recognised** location for diverse arts promotion that is remarkable, engaging, authentic, representative, captivating, inclusive and always has learning disabled and autistic people at the centre.

We have put in place systems, processes and procedures to ensure we are a well-run, dynamic, cultural organisation that leads the way in sector and societal change for learning disabled and autistic people, **creating a cultural heritage for a future that includes, informs and is led by them.**

A future where they feel that society and the arts are something available to them at whatever level they wish to access it.

OUR FOUR AREAS OF WORK



CORE ENSEMBLE

01



The Core Ensemble Is Company in Residence at The Old Library in Mansfield, and has been creating touring work since 2008. Our core ensemble cast are exclusively learning disabled and autistic, and using a collaborative devising process we create unique, witty, provocative theatre based on their lives, experiences and questions about the world and their existence within it. Through compelling performances that invite audiences to laugh, ponder and wonder we seek to stimulate social change.

We are becoming increasingly intolerant of learning disabled and autistic people remaining segregated, overlooked and infantilised by society and we will continue to produce art that sparks solutions until this has stopped.



Is a week-long arts and culture festival held across Mansfield and Ashfield that has the primary aim of smashing the stigma and segregation learning disabled and autistic people face on a societal level. OneFest gives learning disabled and autistic people the chance to be out, loud and proud and the rest of the community surprise themselves by getting alongside them and enjoying it.

Across seven days we deliver an exciting line up of entertainment that is rich with high profile professional artists, comedians and creatives. All events are accessible, reasonably priced or free, and provide experiences that will inspire and excite.

HUMAN ARTIST

03



Human Artist is a year long, entry level programme in performance making and creativity, delivered at Portland College by Unanima as part of their curriculum offer. Students undergo the exploration of drama elements that expose each learner to the craft of theatre making, and giving them the opportunity to flex their creative muscles and enjoy all the wellbeing benefits and transferable skills that are gained through this.

LOCAL AREA NETWORK

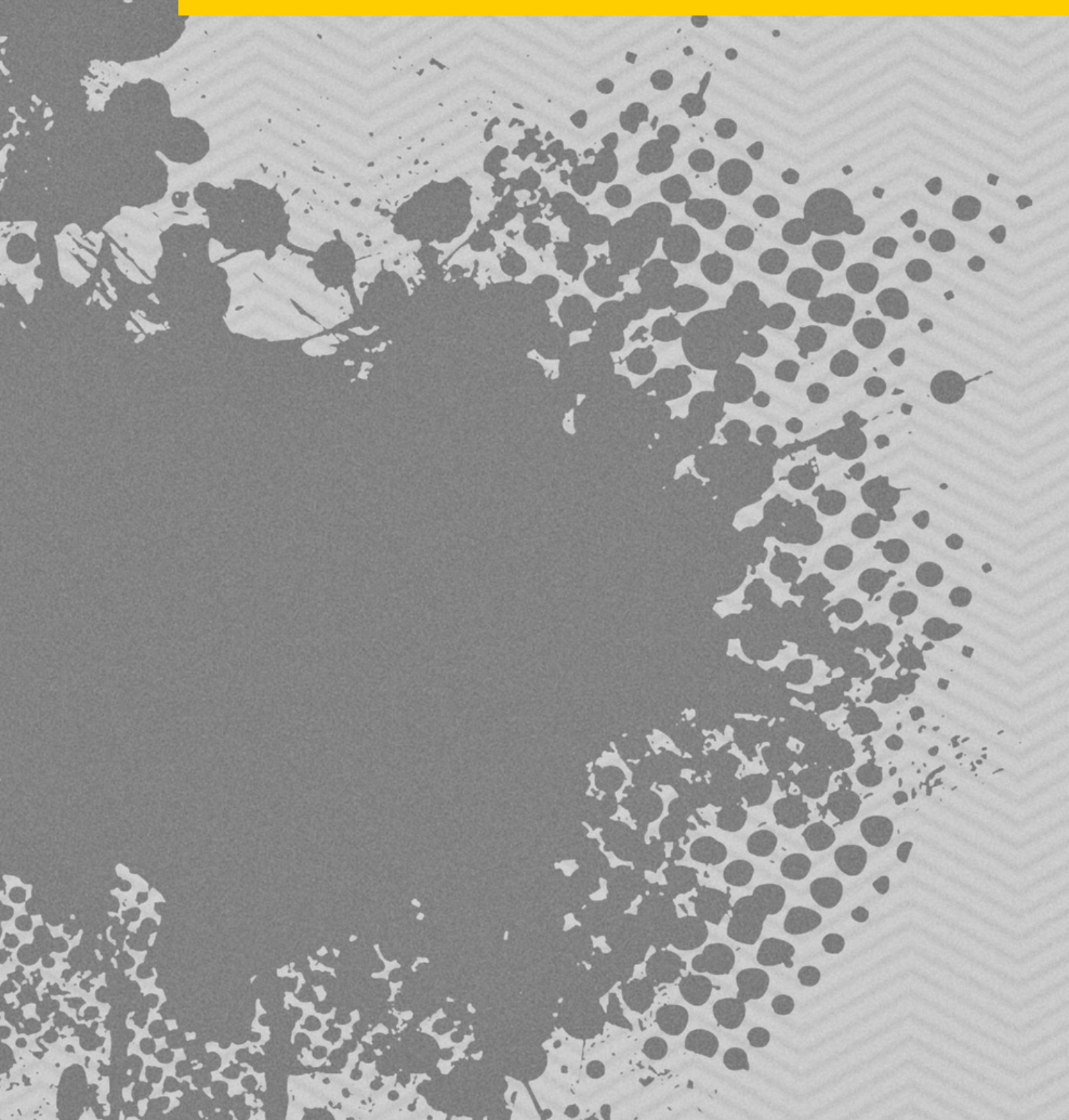
04



The Local Area Network of Creative Provision for Learning Disabled and Autistic People - The Network is an initiative developed by Unanima and Inspire Youth Arts in order to bring all providers of creative provision in Mansfield for learning disabled and autistic (LDA) people together.

In order for LDA people across the region to have an equity of opportunity there needs to be established programmes, pathways, and then routes that enable progression and development. The network has come together to map, plan and radically change the arts offer for LDA people in Mansfield predominantly, but looking forward, see this as the beginnings of an offer that will be of interest to LDA people from outside of the area.

ACHIEVEMENTS & PERFORMANCE



CORE ENSEMBLE



Our touring company, whose cast is exclusively learning disabled and autistic, were commissioned to perform their current show 'State of Independence' at two conferences; a Nottinghamshire social care event and a Nottinghamshire Celebration event.

This raised the profile of Unanima's work and mission, and we received great reviews;

'Never seen anything like it, this needs to tour round the Country'

'Absolutely phenomenal, the messages blew me away and is exactly what this conference needed'

'This is what theatre should do'

We received a commission from Mansfield District Council's Cultural Services to create an installation piece for their exhibition covering the History of Learning Disability, and worked with Professor Lucy Delap from the University of Cambridge during our R&D process.

To support the creation of a new show, we were supported to undertake a residential at Level Centre, in Matlock, Derbyshire.

For many of the cast this was the first time away from parents / carers.

ONEFEST



2023 saw a more exciting line up of artists and bolder programming, which brought new, larger and more diverse audiences than previous years.

We delivered extraordinary and expansive cultural experiences that tingled the taste buds and set OneFest on track for being the destination festival to see diverse art. Our continued consultation with community members enabled us to provide targeted access measures that ensured all audiences felt seen, heard, invited and empowered to attend.

OneFest 2023 delivered 14 shows and 7 outreach events across 7 days, and through 5 Mansfield venues.

Many events were free, and no ticket price was over £5.

We engaged 56 professional artists, 60% of whom were disabled and / or neurodivergent.

High profile comedian, actor and author, Francesca Martinez mentored and coached our 5 stand up learning disabled and autistic trainee stand up comedians through to performance at the sell out Comedy Showcase event.

Francesca has since become an Ambassador for Unanima.

ONEFEST

7 DAYS

14 EVENTS

7 OUTREACH
EVENTS

56 ARTISTS

2000+
PARTICIPANTS



SATURDAY 15th



LEARNING DISABILITY PRIDE

**MANSFIELD
MARKET PLACE**
10:30am – 5:00pm
FREE
Music, comedy, poetry
and the LD pride parade

AFTER PARTY

THE SWAN
Church Street
5:00pm

Drinking and dancing with
learning disabled DJs



VIDEO GAMING TOURNAMENT

THE OLD LIBRARY
Leeming Street
12:00pm – 3:00pm
£3 carers / support workers go free



SUNDAY ROAST AND ROAST

Secret Venue!
Contact OneFest for details
3:00pm

COMEDY MIXED BILL

COMEDY SHOW
ANDWHYNOT, Leeming Street
7:00pm – 9:30pm
£5 carers / support workers go free



SUNDAY 16th

MONDAY 17th

TENFIFTY NIGHTCLUB

ANDWHYNOT
Leeming Street
7:00pm – 10:00pm
£5 carers/support workers go free



PUB QUIZ

CAPO LOUNGE
Stockwell Gate
1:00pm – 2:30pm
£1 per quiz sheet

COMEDY SHOWCASE

ANDWHYNOT
Leeming Street
7:00pm – 10:00pm
£5
carers / support
workers go free

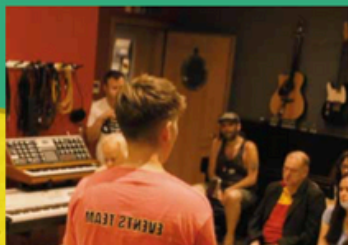


TUESDAY 18th

WEDNESDAY 19th

RECORD AN IBIZA BANGER

THE OLD LIBRARY
Leeming Street
10:00am – 12:30pm
FREE, booking required



BREATHE BY S K SHLOMO

THE PALACE THEATRE
Leeming Street
7:15pm – 9:00pm
£5
carers / support
workers go free



LIVE PROTEST

Meet at **MANSFIELD
MARKET PLACE**
10:30am
FREE



JASON AND HIS ARGONAUTS

Tour of protest statues, meet outside
Four Seasons entrance on Westgate
Shopping centre
12:30pm, **FREE**

NOT F**KIN' SORRY

by **Not Your Circus Dogs**
THE OLD LIBRARY
Leeming Street
7:00pm – 9:00pm
£5 carers / support workers go free



THURSDAY 20th

FRIDAY 21st

THE GIG

Featuring...
Tigercub
THEPETEBOX
Beat Express
learning disabled
guest artists

THE OLD LIBRARY
Leeming Street
7:00pm – 9:30pm
£5
carers / support
workers go free



Independent funding public funding for
**ARTS COUNCIL
ENGLAND**

15–21st JULY

**ONE
FEST**
Arowwai
-2023-
Industries



@OneFestNotts

onefest.oneconversation.co.uk
Booking enquiries: office.onefest@gmail.com
Want a ticket but can't afford it? Get in touch





"The whole experience was absolutely amazing and exceeded my expectations in every way possible. I'm the manager of a small home for adults with learning disabilities, mental health & autism. I thought I was really good at my job but this has made me a better manager and a better person. TenFifty was the absolute highlight for our guys. I expected to walk in and find the usual health & safety set-up such as lights on, lowered volume for music and a 'tame' bar. What I actually experienced was like walking into a club in Ibiza! And I'm not going to lie, at first, I went into risk-assessment mode and started analysing all the potential for harm. Then I stopped myself and thought how amazing it was that my guys were having the same experiences as I did growing up. Nothing was different. The music was banging, laser lights were flipping around everywhere and the bar was fully stocked! I watched as my guys looked around and saw so many others like them. what an amazing feeling that would be, they felt completely empowered and i couldn't have been more overwhelmed. My guys were dancing, drinking and chatting people up! It was absolutely amazing to be part of that. The bar staff, DJ and bouncer were patient and very understanding. I had one of the best nights of my life. Seeing these guys get drunk and sweaty in a club has been the highlight of my career. When I asked them to sum up how they felt, all 3 said 'normal' and that's thanks to you guys. There's nothing you can do to improve that experience... nothing. I cannot thank you all enough for everything and we honestly can't wait to do it all again!!

Highlight was seeing everyone having fun being included, and no one was judged for having an amazing time."

OneFest audience member

HUMAN ARTIST



We were delighted to be commissioned to deliver Human Artist for a second year by Portland College. This partnership is invaluable if we are to make progress within the arts for the learning disabled and autistic community.

A second year also enabled us to interrogate the arts further with participants who returned for a second year, and introduce new participants to an exploration of their creative skills.

We worked with 10 College students and 4 community participants.

As with all of our work, we underpin the sessions with psychological theory to ensure that everyone understands what is being asked of them, and to ensure that the process is authentic.

We brought in visiting spoken word artist Sophie Sparham to support participants with their creative writing skills.

LOCAL AREA NETWORK



Following an inspiring presentation from the Access All Areas team, the Network is committed to developing a Theatre Makers Programme that will be delivered in Mansfield, and benefit learning disabled and autistic people who are interested in exploring a career in the arts, from across the East Midlands.

The Network has expanded its members to include New Perspectives Theatre Company who are keen to be involved in the programme's inception.

The formation of a task group is now set to take this work forwards and will be established in the coming quarter.

OUR TRUSTEES



TRUSTEES



ANDY DAWSON

Chair of Trustees

As former Manager of Inspire Youth Arts, Andy has been a long time supporter of Unanima from its inception, and a constant champion for disabled arts representation. Andy is a skilled project manager, accomplished guitarist and song writer, and brings his vast experience of working as an NPO to the trustee board.



EMMA HANNON

As a Learning Disability and Epilepsy Nurse, Emma has extensive experience of the community we are trying to reach and intelligence into the barriers they face. This, along with vital professional and community network connections, make Emma a trustee that is well equipped to guide us as we advance with our mission.



SOPHIE HACK

Sophie is the Project and Participation Producer for Dante or Die Theatre.

Sophie produces and project manages specific projects and collaborates and engages with diverse community groups, theatres, and councils to encourage participation through performance.

Sophie's knowledge of both the arts and community engagement is essential to the trustee board

TRUSTEES



SARAH ORTON

Sarah is a qualified social worker, specialising in adult care, with 24 years experience of working in Local Authority services.

Sarah joined the team as she is passionate about the rights of learning disabled and / or autistic people to have the right and opportunity to live a fully inclusive life, and feels that she can be most effective in promoting this through her role as a trustee for Unanima.

Sarah brings both specialist knowledge and a zeal for social change.



WILL FARR

Will is an aspiring actor, activist, comedian, and member of the Unanima Core Ensemble. Will says he has finally found a space to truly feel himself around his peers and finds being part of the Unanima cast offers him the platform he's always wanted to advocate for himself and others.

Will is autistic and as such brings invaluable expertise by experience to the board of trustees.

Will has a drive to make serious inroads into levelling up and increasing diversity within leadership and society as a whole.

FINANCES



DECLARATION

This report represents a statement from the trustees that this report represents a true and accurate record of the work of the charity, and is informed by guidance issued by the Charity Commission on public benefit.

The charity's aim of the advancement of the art of drama and the performing arts for the public benefit runs through all strands of Unanima's work, and is robustly considered when planning forward.

Unanima Theatre
The Old Library
Leeming Street
Mansfield
Notts
NG18 1NG

Charity number: 1196242



UNANIMA THEATRE
 Charity number 1196242
 Accounts for the period to 31st March 2024

Statement of Financial Activities

		Year to 31.3.24 Unrestricted Funds £	17 months to 31.3.23 Unrestricted Funds £
Incoming Resources	Note		
Donations and legacies		292,031	152,297
Charitable activities		9,455	1,200
	2	<u>301,486</u>	<u>153,497</u>
Resources Expended			
Charitable activities	4	<u>212,304</u>	<u>79,173</u>
Net Income		<u>89,182</u>	<u>74,324</u>
Transfer from the CIC	7		42,357
Transfer from the OneFest account	8	3,802	
Total Funds brought forward		116,681	0
Total Funds carried forward		<u>209,665</u>	<u>116,681</u>

Balance Sheet at 31st March 2024

	Year to 31.3.24 £	17 months to 31.3.23 £
Current Assets		
Cash at bank	209,665	116,681
Total Net Assets	<u>209,665</u>	<u>116,681</u>
Unrestricted Funds	<u>209,665</u>	<u>116,681</u>

Notes to the Accounts

1 Accounting Policies

Basis of Accounting

These accounts have been prepared under the historical cost convention in accordance with the Statement of Recommended Practice , Accounting and Reporting by Charities preparing their accounts in accordance with the Financial Reporting Standard applicable in the UK and Republic of Ireland (FRS 102) and with the Charities Act 2011. The charity constitutes a public benefit entity.

Income

Income is included in the Statement of Financial Activities when the charity becomes entitled to the resources and the monetary value can be measured with sufficient reliability. There has been no offsetting in assets or liabilities, or income and expenditure. Grants and donations are only included in the Statement of Financial Activities when the general income criteria are met.

Reserves

The Trustees have a policy to hold unrestricted money on reserve which is sufficient to cover any unexpected drop in income. This policy is regularly reviewed. Currently unrestricted reserves are £209,665 which is equal to 99% of annual expenditure and are therefore considered to be sufficient for the ongoing operations of the charity.

2 Analysis of Income

	Year to 31.3.24	17 months to 31.3.23
	Unrestricted Funds	Unrestricted Funds
	£	£
Donations and Legacies		
Grants - ACE NPO	232,000	150,297
Grants - Other	1 4,5 78	
Sponsorship and donations	3 4,7 50	2,000
Local authority income	10,703	0
	<hr/>	<hr/>
	292,031	152,297
Charitable activities		
Subscriptions	4, 77 9	0
OneFest Ticket sales	1,2 26	1,2 00
Access to work	3,0 36	0
Other income	414	0
	<hr/>	<hr/>
	9, 45 5	1, 20 0

3 Grants

Unanima Theatre has been awarded Arts Council England, National Portfolio Organisation status and has been awarded a grant of £696,000 over three years, starting with the year to 31st March 2024. Arts Council England can only guarantee future instalments of the grant as long as sufficient funds from the Government and /or National Lottery are available to it.

4 Analysis of Expenditure

	Year to 31.3.24 Unrestricted Funds £	17 months to 31.3.23 Unrestricted Funds £
Charitable Activities		
Staff Costs	127,198	68,740
Direct Activity Costs	61,536	6,324
Overheads	23,570	4,109
	<u>212,304</u>	<u>79,173</u>

5 Fees paid to the Independent Examiner

	<u>240</u>	<u>0</u>
--	------------	----------

6 Staff Costs

Salaries	70,782	
Social Security Costs	12,551	
Pensions	25,511	
Self employed staff	18,354	68,740
	<u>127,198</u>	<u>68,740</u>

No employees received employee benefits (excluding employer pension costs) for the reporting period of more than £60,000

Number of employees	3	0
---------------------	---	---

In April 2023 three members of the self employed staff were given permanent employment contracts by the charity. Other staff continue to be paid on a self employed basis.

7 Transfer of funds from CIC

Unanima Theatre was previously a Community Interest Company until 22nd October 2021 when it was closed and the balance of funds of £42,357 was transferred to Unanima Theatre Charitable Incorporated Organisation.

8 Transfer of funds from OneFest

The annual arts festival held in Mansfield "OneFest" has now been brought under the control of Unanima Theatre CIO and the funds of £3,802 have been transferred.

EXAMINERS REPORT

INDEPENDENT EXAMINER'S REPORT TO THE TRUSTEES OF UNANIMA THEATRE CIO

Independent examiner's report to the trustees of Unanima Theatre CIO

I report to the charity trustees on my examination of the accounts of Unanima Theatre CIO (the Trust) for the year ended 31 March 2024.

Responsibilities and basis of report

As the charity trustees of the Trust you are responsible for the preparation of the accounts in accordance with the requirements of the Charities Act 2011 ('the Act'). I report in respect of my examination of the Trust's accounts carried out under Section 145 of the Act and in carrying out my examination I have followed all applicable Directions given by the Charity Commission under Section 145(5)(b) of the Act.

Independent examiner's statement

Since your charity's gross income exceeded £250,000 your examiner must be a member of a listed body. I can confirm that I am qualified to undertake the examination because I am a member of the Association of Chartered Certified Accountants, which is one of the listed bodies. I have completed my examination. I confirm that no material matters have come to my attention in connection with the examination giving me cause to believe that in any material respect:

1. accounting records were not kept in respect of the Trust as required by Section 130 of the Act; or
2. the accounts do not accord with those records; or the accounts do not comply with the applicable
3. requirements concerning the form and content of accounts set out in the Charities (Accounts and Reports) Regulations 2008 other than any requirement that the accounts give a true and fair view which is not a matter considered as part of an independent examination.

I have no concerns and have come across no other matters in connection with the examination to which attention should be drawn in this report in order to enable a proper understanding of the accounts to be reached.



Richard Shaw FCCA
The Association of Chartered Certified Accountants
Beeley Hawley & Co. Ltd
Chartered Accountants
42-44 Nottingham Road
Mansfield
Nottinghamshire
NG18 1BL
Date:12th May 2025....

The image features a bright yellow vertical bar on the left side. The background is a light gray with a subtle, repeating chevron pattern. Overlaid on this background are several abstract, dark gray shapes: a large, irregular splash-like form in the center-right, and smaller, scattered circular and irregular shapes along the left and bottom edges.

GET IN TOUCH

@unanimatheatre

www.unanima-theatre.co.uk

office.unanima@gmail.com