

START YOUNG UK

England & Wales · Charity number 1196028

Details

Status Registered

Legal form CIO

Registered 2021-10-04

Register [View on the Charity Commission register](#)

Contact

Address C/O Start Young UK
Gladstone Hall
57 Evesham Road
Stratford
E15 4AL

Phone 07946369885

Email startyoung21@gmail.com

Website www.startyounguk.com

Activities

Objects: TO ACT AS A RESOURCE FOR YOUNG PEOPLE FROM THE AGE OF 5 UP TO THE AGE OF 18 LIVING IN UNDERPRIVILEGED AND/OR DISADVANTAGED AREAS OF NEWHAM, LONDON, AND THE SURROUNDING AREA BY PROVIDING ADVICE AND ASSISTANCE AND OTHER ACTIVITIES AS A MEANS OF:(A) ADVANCING IN LIFE AND HELPING YOUNG PEOPLE BY DEVELOPING THEIR SKILLS, CAPACITIES, AND CAPABILITIES TO ENABLE THEM TO PARTICIPATE IN SOCIETY AS INDEPENDENT, MATURE, AND RESPONSIBLE INDIVIDUALS.(B) ADVANCING EDUCATION;(C) RELIEVING UNEMPLOYMENT.(D) PROVIDING RECREATIONAL AND LEISURE TIME ACTIVITY IN THE INTERESTS OF SOCIAL WELFARE FOR PEOPLE LIVING IN BENEFIT WHO HAVE NEED BY REASON OF THEIR YOUTH, AGE, INFIRMITY OR DISABILITY, POVERTY OR SOCIAL AND ECONOMIC CIRCUMSTANCES WITH A VIEW TO IMPROVING THE CONDITIONS OF LIFE OF SUCH PERSONS.

Activities: We act as a resource for young people from the age of 5 up to the age of 18 living in underprivileged and/or disadvantaged areas of the UK, by providing advice and assistance and other activities as a means of: advancing in life and helping young people by developing their skills, capacities, and capabilities to enable them to participate in society as independent, mature, individuals

Classification

- **How:** Provides Services, Provides Advocacy/advice/information, Other Charitable Activities
- **What:** General Charitable Purposes, Education/training, The Advancement Of Health Or Saving Of Lives, The Prevention Or Relief Of Poverty, Economic/community Development/employment, Human Rights/religious Or Racial Harmony/equality Or Diversity
- **Who:** Children/young People

Geography

- Newham

Finances

| Period end | Income | Expenditure | Assets | Employees |
|------------|---------|-------------|--------|-----------|
| 2025-04-01 | £58,447 | £37,503 | - | - |
| 2024-04-01 | £35,087 | £13,788 | - | - |
| 2023-04-01 | £9,793 | £4,924 | - | - |

Trustees

| Name | Role | Appointed |
|------------------------|-------|------------|
| Angela Caroo MS | Chair | 2021-09-30 |
| Frederick Thomlinson | | 2024-05-20 |
| Laura Anderson-Moreton | | 2024-05-25 |
| Marilyn Matthews Mrs | | 2021-09-30 |

START YOUNG UK

England & Wales - Charity number 1196028

Accounts



Charity Trustee Report

2025



MONTHLY REPORT INDEX

SECTION 1

1. EXECUTIVE SUMMARY

SECTION 2

- A) ABOUT US**
- B) PROGRAMMES/PROJECTS**
- C) EVENTS**
- D) CHRISTMAS GIFTING**
- E) STAFFING**
- F) FINANCE**
- G) PARTNERSHIPS/COLLABORATIONS**

SECTION 1

EXECUTIVE SUMMARY

2025 has been a year of visibility and deepened impact for Start Young UK. Building on the foundations laid in previous years, the charity strengthened its programmes, expanded its reach to new regions and increased its national profile through strategic partnerships and high-impact public campaigns.

Despite operating in a challenging funding and capacity environment, Start Young UK continued to deliver meaningful outcomes for young people and families, supported by the commitment of trustees, volunteers, partners and supporters.

Leadership & Governance

Throughout 2025, we continued to strengthen our governance structures by onboarding new trustees and reviewing board capacity and skills in line with the charity's growth. This year also highlighted the importance of sustainability in trustee recruitment, informing improvements to our onboarding and succession planning processes going forward.

Partnerships & Collaboration

We secured and developed collaborations with a range of corporate, education and community partners, enabling us to expand delivery, increase visibility and reach new schools and young people. These partnerships played a critical role in supporting programme delivery and fundraising activity throughout the year.

Community Support & Fundraising

Our 2025 Christmas Gifting appeal raised £3,949, enabling the wrapping and distribution of over 700 gifts. This initiative supported 80+ families with winter essentials, personal care items and food hampers, alongside the donation of 70+ gifts and food items to the NEWway Project. This community-led effort demonstrated the continued generosity and trust placed in Start Young UK by supporters and partners.

Programme Delivery & Impact

Elevate Programme

- The Elevate Programme continued to grow in scale and reach during 2025. We successfully expanded delivery to Northampton in partnership with Barclays, while also launching an additional London cohort with Multiverse.
- Across the year, Elevate reached over 100 students, working in collaboration with more than 30 schools. The programme continued to support young people's confidence, employability and career awareness, while maintaining strong engagement from schools, students and corporate partners.

Thrive Programme

- The Thrive Programme remained a vital part of our grassroots work, continuing to support children and families in need. Our partnership with Newham 11th Scouts also continued, supporting young people's personal development through enrichment and community-based activities.
- In 2025, Thrive participants benefited from a range of experiences including a Little Mermaid pantomime trip, a Mudchute Farm visit, and a vision board workshop, creating positive, confidence-building experiences beyond the classroom.

Engagement, Visibility & Influence

- 2025 marked a significant step forward in Start Young UK’s national presence.
- We hosted our first ever Youth Empowerment Summit, bringing together young people, partners and supporters to amplify youth voice and inspire ambition.
- In partnership with JCDecaux Community Channel, we delivered a nationwide billboard campaign, “Paint the Nation Pink”, displaying Start Young UK’s message across hundreds of locations and reaching millions throughout the month of March.
- The charity was also nominated and shortlisted for the National Diversity Awards (NDA) 2025 Award, recognising our growing impact and contribution to youth empowerment.

These milestones significantly increased awareness of Start Young UK’s mission and positioned the charity as a credible and visible voice in the youth and education space.

Looking Ahead

As we move into 2026, Start Young UK remains focused on strengthening governance, diversifying funding streams and scaling impact responsibly. The progress made in 2025 provides a strong platform for sustainable growth, deeper partnerships and continued positive outcomes for the young people and communities we serve.

SECTION 2

| Item | Description |
|------|--|
| A | Overview of the charity aims and objectives |
| B | Synopsis of programmes run via the charity |
| C | Events held over the last 12 months for young people on our programmes |
| D | Overview of our Christmas Gifting Programme |
| E | Update on staffing and new hires |
| F | Overview of all donations, grants and spends |

| | |
|----------|--|
| G | Our collaborations & partnerships |
| H | Potential risks & proposed mitigations |
| I | Our plans for 2026 |

A: ABOUT US

Start Young UK is a registered charity and, as such, our promise is to act as a resource for young people living in disadvantaged areas from the age of 5 up to the age of 18. With a strong ethos of hard work and support we are engaging with schools and families to ensure we are providing a range of advice, support and leisure activities for young people.

Vision:

To be the leading charity in empowering young people from socio-economically disadvantaged backgrounds to achieve their full potential and thrive in a supportive community.

Mission:

To provide comprehensive support to socio-economically disadvantaged young people by ensuring access to essential resources, education, career development, and personal growth opportunities, empowering them to overcome barriers and succeed in their futures.

Core Values:

- Empowerment: Providing tools and opportunities to help young people overcome challenges.
- Inclusivity: Ensuring every young person, regardless of background, can access our resources.
- Collaboration: Building strong partnerships to enhance our reach and impact.
- Integrity: Maintaining transparency, accountability, and safeguarding young people.
- Innovation: Continuously evolving our programmes to meet community needs.

Strategy:

Our strategy is built on five pillars:

1. Youth Empowerment and Programme Excellence
2. Partnerships and Collaborative Impact
3. Scalable Operations and Innovation
4. Financial Sustainability and Growth
5. Governance, Compliance, and Organisational Excellence

This plan provides a comprehensive roadmap for SYUK's growth and impact, ensuring we remain adaptable to the evolving needs of the young people we serve while driving meaningful change in their

lives and communities. Through our scalable model, we aim to break the cycle of socio-economic disadvantage and create a more equitable future for youth across the UK.

B: OUR PROGRAMMES

The charity currently runs two programmes: 'Elevate' and 'Thrive SYUK'.

Elevate

In partnership with Barclays and Multiverse, the Elevate Programme supports and inspires young people from socio-economically deprived background to grow their experience and qualifications, setting them up for success their future careers.

The 6-month programme supports young people aged 16-18, equipping them with a comprehensive set of personal and professional skills while providing a platform for our partner organisations to showcase who they are, what they do and what they offer in terms of early career opportunities.

This year, we have enrolled a total of 100 students. 60 in London and 17 from Manchester, 23 Northampton, with 78% BAME representation in the programme (based upon 72 student responses), and students reporting increased confidence from 3/5 to 5/5 (based on 41 responses).

We have had fantastic feedback from students, schools and mentors alike:

- “A year ago, I never would have had the confidence to speak in front of a group. This programme has taught me to believe in myself and my abilities” - student on the Multiverse Elevate programme while presenting back his vision Board to the wider group.
- “We want to provide feedback for your programme from our students. First, they want to thank you wholeheartedly for everything. My L2 business students are so excited and happy to be part of this. They have been exposed to a lot of real life and social situations that they were not aware of. Our L3 students have been very supportive and helpful in encouraging more students to sign up” - South Bank University Sixth Form.
- “If you're thinking of using a volunteer day, do reach out. This was one of the best days I've had at work and Start Young are such a brilliant charity to spend your time with” - Billy Cavell, facilitator for Multiverse Elevate Workshop 3.

Thrive

The Thrive Programme provides holistic support to underprivileged children in their educational journey from ages 5-18. The programme seeks to break down barriers to education, empowering children to learn essential life skills and fostering an environment that cultivates personal and academic growth.

Thrive encompasses mentorship initiatives, connecting students with experienced individuals from a range of backgrounds; skill-building workshops, broadening their skill set to open future opportunities; and practical support, such as supplying school uniforms and establishing school clubs to promote extracurricular activities.

This year, we have supported over 10 children on the programme.

C: EVENTS

Over the past 12 months, Start Young UK has organised a series of impactful events, each contributing to the charity's mission. These events have served as vibrant platforms for community engagement, creating a positive and inclusive community atmosphere.

Highlights include:

- **The Little Mermaid Pantomime**
We took 30 children and their families to see The Little Mermaid, offering an unforgettable experience that inspired creativity and built confidence.
- **Mudchute Farm & Millwall Park**
We took the children to Mudchute Farm. They learnt about and interacted with a variety of different animals. After lunch, we headed to Millwall Park for some sports day games. The children built their confidence as well as their communication and team building skills.
- **Vision Board Event**
We hosted a creative event to help the children to visualise their dreams and ambitions. From personal affirmations to long-term goals, our young people articulated visions of becoming future footballers, actors, and doctors, demonstrating a level of confidence and drive that underscores our mission. By nurturing these aspirations, we are ensuring that the next generation possesses the mindset and motivation required to turn their potential into reality.
- **Multiverse Summer Fun Run**
More than 20 people took part in our superhero themed fun run, raising over £1000.
- **Youth Empowerment Summit**
We hosted an evening of inspiring speakers, powerful youth performance, meaningful connections to shape a better future for the next generation. We had approximately 150 guests, many of whom made a pledge to help create positive changes for the future.
- **Multiverse Christmas Fun Run**
Our Christmas Fun Run, in collaboration with Multiverse, brought together 50 participants to collectively run 552km. Together we raised over £6,338 to support our Christmas Gifting Initiative, combining community spirit with fitness to create a meaningful impact.
- **Christmas Gifting Programme**
Our Christmas Gifting raised £3,949 and saw 27 volunteers come together to wrap over 700 gifts for more than 80 families as well as 70+ gifts given to the NewWay project.

D: CHRISTMAS GIFTING INITIATIVE

Our Christmas Gifting Initiative exemplifies our commitment to making a tangible impact to the lives of those we serve. Since the initiative began in October 2021, we have distributed over 9,000 gift parcels to families in need. The funds raised have enabled us to provide essential items such as underwear, socks, hats and gloves, along with thoughtfully curated personal hampers for parents and food hampers for entire families, spreading generosity and warmth throughout the festive season.

The **Christmas Gifting 2025** initiative was supported by over 25 dedicated volunteers, as well as generous donations from Asda, Poundland, Multiverse, Kurve Group and an incredible show of support from our wider community. Together, we ensured that the holiday spirit reached those who needed it most.

E: STAFFING

Throughout 2025, Start Young UK continued to operate as a lean, volunteer-led organisation, supported by two part-time staff members, a committed board of trustees, key volunteers and delivery partners.

During the year, we onboarded trustees with expertise across governance, legal and fundraising alongside key volunteers supporting priority areas including communications and photography.

As with many growing charities, 2025 also saw periods of transition within the team, reinforcing the importance of sustainable recruitment, clear role expectations and structured onboarding - all of which have informed improvements to our governance and people processes going forward.

Our core team of volunteers remained central to the charity's success, contributing significant time and expertise across programmes, fundraising, events and operations. In addition, partner and corporate volunteers continued to play an important role in supporting delivery across our Elevate and Thrive programmes.

Collectively, trustees, volunteers and partners contributed hundreds of hours throughout the year, enabling Start Young UK to expand its reach, deliver high-quality programmes and increase its national visibility, while maintaining a strong focus on safeguarding, governance and impact.

As we move into 2026, the charity is focused on strengthening board capacity, succession planning and volunteer support structures to ensure sustainable growth and continuity.

F. FINANCE

Start Young UK Charity is pleased to present the financial report for the year ending 1st April 2025.

The following report outlines the Charity's financial performance, sources of income, and the allocation of funds to various programmes.

Income sources

Start Young UK relies on a diversified set of income sources to support its mission. The primary contributors to the charity's revenue are as follows:

- 1. Donations** - Generous contributions from individuals and organisations who share our commitment to the wellbeing of children and families in Newham.
- 2. Fundraising** - Engagement in various fundraising events to gather financial support from the community.
- 3. Buddy Donations** - Ongoing support from dedicated Buddies who contribute their time, effort and resources towards the success of Start Young initiatives.

Allocations of Funds

- 1. Community Club Support** – Sweatshirts for children attending the weekly Community club, including Beavers and Squirrels, have been purchased, fostering a sense of belonging and community engagement. Community Club weekly subscription for all children on the scheme is paid for by the charity.
- 2. Holiday Activities** - Funds have been allocated to organise activities and various days out for families during the holidays, promoting recreational and bonding opportunities.
- 3. Christmas Gifting Programme** - One of the highlights of our efforts is the Christmas Gifting Programme, where in 2024 over 1000 gifts – including personal care packages, toys, vests, undergarments and food hampers – were purchased, wrapped and distributed to low-income families in schools and the broader Newham community.
- 4. Staff Costs** – Staffing expenditure for three part time employees.

Financial Highlights: 2nd April 2024 – 1st April 2025

Total Income as of 1st April 2025: £58,447

Total Spend as of 1st April 2025: £37,503

G: COLLABORATIONS AND PARTNERSHIPS

We have partnered and collaborated with the following organisations over the last 12 months:

- **Barclays** - key sponsor for the Elevate Programme and our 2025 Youth Empowerment Summit.
- **Multiverse** – running first cohort of Elevate programme from October 2025-April 2026.

- **Siemens, Lloyd's** – Led a Elevate session on apprenticeship pathways, sharing insights into careers.
- **Met Police** – Led a Elevate session on understanding workplace skills.
- **Urbanest** – Led a Elevate session on interview best practice & how to leverage AI.
- **Reef** – Led a Eevate session on vision boarding & transferable skills.
- **AWS** – Led an Elevate AI session with walkthrough of early career opportunities
- **Northampton Saints** – Shared a session on the third-party sector on one of the Elevate workshops
- **Newham Council** – Partnered on Youth Summit & Mentors for the Elevate Programme and a County Lines workshop.
- **Ebony King** – Delivered an Elevate session on money mules and how to stay safe online.
- **Northampshire Police** – delivered a session on Elevate in the day of a life of the Northampshire Police with Q &A
- **Greater Manchester Police** – Walked through the apprenticeship process on the Elevate Session

H: POTENTIAL RISKS & PROPOSED MITIGATIONS

Risk Management and Safeguarding Compliance

- We have taken all necessary steps to ensure risks are assessed, mitigated, and managed effectively. Any safeguarding concerns or issues that arise are promptly addressed by our designated Safeguarding Lead, who maintains thorough records. To date, we have had no safeguarding issues this year.
- As a charity, we are committed to proactively supporting families to prevent safeguarding concerns from developing.

Risk Assessments & Mitigation Measures

- We conduct comprehensive risk assessments for all venues used by the charity for the **Thrive** and **Elevate** programs, including informal visits to locations such as the theatre and farm. These assessments ensure that all activities are carried out in a safe and controlled environment.
- For the **Elevate** program, risk assessments are shared with participating schools and colleges in advance, outlining key safeguarding considerations, including:
 - **Travel Safety** – Guidance on safe routes to and from the venue.
 - **Emergency Preparedness** – Identifying fire exits, fire wardens, and first aiders.
 - **Behavioural Expectations** – Setting clear guidelines for attendees.
 - **Special Requirements** – Ensuring accommodations for students with neurodiverse needs or other specific requirements.

- All relevant stakeholders, including catering teams, are informed of any necessary adjustments. For instance, due to an extreme allergy, all attendees are instructed not to bring nuts to the venue. Food menus were tailored accordingly, offering **nut-free, halal, and vegetarian options** to ensure inclusivity and safety.
- Through these measures, we ensure that all risks are identified, mitigated, and managed effectively, allowing us to create a safe and supportive environment for the young people and families we serve.

I: OUR PLANS FOR 2026

- Expand our community engagement and fundraising activities on a more regular basis.
- Expand existing revenue sources such as corporate partnerships, individual giving and volume/value of grants received
- Turn Elevate into a qualification
- Approach councils regarding funding provisions for students in their boroughs



CHARITY COMMISSION
FOR ENGLAND AND WALES

Start Young UK

1196028

Receipts and payments accounts

CC16a

For the period
from

02/04/2024

To

01/04/2025

Section A Receipts and payments

| | Unrestricted funds to the nearest £ | Restricted funds to the nearest £ | Endowment funds to the nearest £ | Total funds to the nearest £ | Last year to the nearest £ |
|---|--|---|--|---------------------------------|-------------------------------|
| A1 Receipts | | | | | |
| Buddy Donation | 3,734 | - | - | 3,734 | 3,649 |
| Just Giving | 7,455 | - | - | 7,455 | 389 |
| Barclays Aspire Programme | 45,680 | - | - | 45,680 | 27,000 |
| Family Holiday Association - Trip to Margate | - | - | - | - | 1,500 |
| London Borough of Newham - King's Coronation Event | - | - | - | - | 500 |
| Youth Empowerment Summit | 500 | - | - | 500 | - |
| HRMC Gift Aid | 1,079 | - | - | 1,079 | - |
| Other | - | - | - | - | 2,049 |
| Sub total (Gross income for AR) | 58,447 | - | - | 58,447 | 35,087 |
| A2 Asset and investment sales, (see table). | | | | | |
| | - | - | - | - | - |
| | - | - | - | - | - |
| Sub total | - | - | - | - | - |
| Total receipts | 58,447 | - | - | 58,447 | 35,087 |
| A3 Payments | | | | | |
| Christmas Gifting | 5,043 | - | - | 5,043 | 1,457 |
| Other Gifting | 1,934 | - | - | 1,934 | 1,967 |
| Margate Trip | - | - | - | - | 1,513 |
| King's Coronation Event | - | - | - | - | 453 |
| Youth Empowerment Summit | 950 | - | - | 950 | - |
| Staff Costs | 26,126 | - | - | 26,126 | 7,101 |
| Volunteer expenses | 2,211 | - | - | 2,211 | 452 |
| Insurance | 215 | - | - | 215 | 158 |
| Other administration expenses | 1,024 | - | - | 1,024 | 688 |
| Sub total | 37,503 | - | - | 37,503 | 13,789 |
| A4 Asset and investment purchases, (see table) | | | | | |
| | - | - | - | - | - |
| | - | - | - | - | - |
| Sub total | - | - | - | - | - |
| Total payments | 37,503 | - | - | 37,503 | 13,789 |
| Net of receipts/(payments) | 20,944 | - | - | 20,944 | 21,298 |
| A5 Transfers between funds | - | - | - | - | - |
| A6 Cash funds last year end | 26,167 | - | - | 26,167 | - |
| Cash funds this year end | 47,112 | - | - | 47,112 | 21,298 |

Section B Statement of assets and liabilities at the end of the period

| Categories | Details | Unrestricted funds to nearest £ | Restricted funds to nearest £ | Endowment funds to nearest £ |
|----------------------|--|------------------------------------|----------------------------------|---------------------------------|
| B1 Cash funds | Cash at Bank | 47,112 | - | - |
| | | - | - | - |
| | | - | - | - |
| | Total cash funds | 47,112 | - | - |
| | (agree balances with receipts and payments account(s)) | OK | OK | OK |

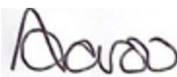
| Categories | Details | Unrestricted funds to nearest £ | Restricted funds to nearest £ | Endowment funds to nearest £ |
|---------------------------------|---------|------------------------------------|----------------------------------|---------------------------------|
| B2 Other monetary assets | | - | - | - |
| | | - | - | - |
| | | - | - | - |
| | | - | - | - |
| | | - | - | - |
| | | - | - | - |

| Categories | Details | Fund to which asset belongs | Cost (optional) | Current value (optional) |
|-----------------------------|---------|-----------------------------|-----------------|--------------------------|
| B3 Investment assets | | | - | - |
| | | | - | - |
| | | | - | - |
| | | | - | - |
| | | | - | - |

| Categories | Details | Fund to which asset belongs | Cost (optional) | Current value (optional) |
|---|---------|-----------------------------|-----------------|--------------------------|
| B4 Assets retained for the charity's own use | | | - | - |
| | | | - | - |
| | | | - | - |
| | | | - | - |
| | | | - | - |
| | | | - | - |
| | | | - | - |
| | | | - | - |

| Categories | Details | Fund to which liability relates | Amount due (optional) | When due (optional) |
|-----------------------|---------|---------------------------------|-----------------------|---------------------|
| B5 Liabilities | | | - | |
| | | | - | |
| | | | - | |
| | | | - | |

Signed by one or two trustees on behalf of all the trustees

| Signature | Print Name | Date of approval |
|--|--------------|------------------|
|  | Angela Caroo | 30/01/2026 |
| | | |



Section A Independent Examiner's Report

Report to the trustees/ members of

Charity Name Start Young UK

On accounts for the year ended

1 April 2025 Charity no (if any) 1196028

Set out on pages

2 to 3 (remember to include the page numbers of additional sheets)

I report to the trustees on my examination of the accounts of the above charity ("the Trust") for the year ended DD / MM / YYYY.

Responsibilities and basis of report

As the charity trustees of the Trust, you are responsible for the preparation of the accounts in accordance with the requirements of the Charities Act 2011 ("the Act").

I report in respect of my examination of the Trust's accounts carried out under section 145 of the 2011 Act and in carrying out my examination, I have followed the applicable Directions given by the Charity Commission under section 145(5)(b) of the Act.

Independent examiner's statement

I have completed my examination. I confirm that no material matters have come to my attention (other than that disclosed below *) in connection with the examination which gives me cause to believe that in, any material respect:

- accounting records were not kept in accordance with section 130 of the Act or
the accounts do not accord with the accounting records

I have no concerns and have come across no other matters in connection with the examination to which attention should be drawn in order to enable a proper understanding of the accounts to be reached.

* Please delete the words in the brackets if they do not apply.

Signed: [Signature]

Date: 29/01/20

Name: C. E. Harlow

Relevant professional qualification(s) or body (if any):

Chartered Institute of Management Accountants

Address:

14 Walnut Avenue
Langford
SG18 9GT

START YOUNG UK

England & Wales - Charity number 1196028

Accounts



Charity Trustee Report

2024



MONTHLY REPORT INDEX

SECTION 1

1. EXECUTIVE SUMMARY

SECTION 2

- A) ABOUT US**
- B) PROGRAMMES/PROJECTS**
- C) EVENTS**
- D) CHRISTMAS GIFTING**
- E) STAFFING**
- F) FINANCE**
- G) PARTNERSHIPS/COLLABORATIONS**

SECTION 1

1. EXECUTIVE SUMMARY

2024 has been a transformative year for Start Young UK, marked by growth, impact and resilience. We welcomed new leadership, expanded our programmes and built meaningful partnerships that have strengthened our ability to empower young people. With the support of our donors, sponsors and dedicated team, we have made significant strides in fulfilling our mission.

- **Leadership Growth:** Enrolled 6 new trustees and hired 2 additional part-time staff members, enhancing governance and operational capacity.
- **Partnerships:** Secured collaborations with various organisations and received sponsorship from Accenture, Tech Mahindra, University of East London, MET police, Barclays, sponsors, enabling us to expand our reach and impact.
- **Community Support:** Raised £6,338 through donations from leading organisations, which supported initiatives like our **Christmas Gifting Programme**, benefitting over 120 families, refugees and homeless individuals.
- **Programme Expansion:**
 - **Elevate Programme:** Successfully expanded to cover London and Manchester, expanding our outreach to 87 young people in the first year. Ticks all 9 employer Standards for careers and Education. Achieved a 100% engagement from participants and stakeholders.
 - **Thrive Programme:** Thrive continues to excel in providing new school uniforms for children, enriching our grassroots initiatives with essential life skills through our partnership with Newham 11th Scouts. We are proud to see children grow, building confidence and developing key skills that will support them in the future. Took participants on 4 enriching trips, including a theatre visit, creating memorable experiences and fostering personal growth.
- **Engagement & Visibility:** Increased social media engagement across LinkedIn and Instagram, driving a 980% rise in followers and engagement, amplifying our message and outreach.

- **Strategic Planning:** We have developed a clear vision and 5-year plan to support our continued growth in 2025 and beyond.

SECTION 2

| Item | Description |
|-------------|--|
| A | Overview of the charity aims and objectives |
| B | Synopsis of programmes run via the charity |
| C | Events held over the last 12 months for young people on our programmes |
| D | Overview of our Christmas Gifting Programme |
| E | Update on staffing and new hires |
| F | Overview of all donations, grants and spends |
| G | Our collaborations & partnerships |
| H | Potential risks & proposed mitigations |
| I | Our plans for 2025 |

A: ABOUT US

Start Young UK is a registered charity and, as such, our promise is to act as a resource for young people living in disadvantaged areas from the age of 5 up to the age of 18. With a strong ethos of hard work and support we are engaging with schools and families to ensure we are providing a range of advice, support and leisure activities for young people.

Vision:

To be the leading charity in empowering young people from socio-economically disadvantaged backgrounds to achieve their full potential and thrive in a supportive community.

Mission:

To provide comprehensive support to socio-economically disadvantaged young people by ensuring access to essential resources, education, career development, and personal growth opportunities, empowering them to overcome barriers and succeed in their futures.

Core Values:

- Empowerment: Providing tools and opportunities to help young people overcome challenges.
- Inclusivity: Ensuring every young person, regardless of background, can access our resources.
- Collaboration: Building strong partnerships to enhance our reach and impact.
- Integrity: Maintaining transparency, accountability, and safeguarding young people.
- Innovation: Continuously evolving our programmes to meet community needs.

Strategy:

Our strategy is built on five pillars:

1. Youth Empowerment and Programme Excellence
2. Partnerships and Collaborative Impact
3. Scalable Operations and Innovation
4. Financial Sustainability and Growth
5. Governance, Compliance, and Organisational Excellence

This plan provides a comprehensive roadmap for SYUK's growth and impact, ensuring we remain adaptable to the evolving needs of the young people we serve while driving meaningful change in their

lives and communities. Through our scalable model, we aim to break the cycle of socio-economic disadvantage and create a more equitable future for youth across the UK.

B: OUR PROGRAMMES

The charity currently runs two programmes: ‘Elevate’ and ‘Thrive SYUK.’

Elevate

In partnership with Barclays, the Elevate Programme supports and inspires young people from socio-economically deprived background to grow their experience and qualifications, setting them up for success their future careers.

The 6-month programme supports young people aged 16-18, equipping them with a comprehensive set of personal and professional skills while providing a platform for our partner organisations to showcase who they are, what they do and what they offer in terms of early career opportunities.

This year, we have enrolled a total of 58 students. 37 in London and 21 from Manchester, with 85% BAME representation in the programme (based upon 34 student responses).

Thrive

The Thrive Programme provides holistic support to underprivileged children in their educational journey from ages 5-18. The programme seeks to break down barriers to education, empowering children to learn essential life skills and fostering an environment that cultivates personal and academic growth.

Thrive encompasses mentorship initiatives, connecting students with experienced individuals from a range of backgrounds; skill-building workshops, broadening their skill set to open future opportunities; and practical support, such as supplying school uniforms and establishing school clubs to promote extracurricular activities.

This year, we have supported over 20 children on the programme.

Case Study: Student A – A Journey of Transformation Through the Elevate Programme

Student A joined the Elevate Programme’s first pilot cohort with aspirations of studying musical theatre. Coming from a background where no one in her family had worked in the corporate sector, she lacked exposure to opportunities outside her interests and had never applied for a job or a post-16 apprenticeship.

| | | |
|--|----------------|-------------------|
| The | Elevate | Experience |
| Through her participation in the Elevate Programme, Student A embraced a growth mindset. She actively listened, learned and developed essential skill sets that broadened her perspective. With guidance from programme mentors and the support of her peers, she decided to pursue an apprenticeship with one of our partner organisations. | | |

| | | |
|--|-----------------------|----------------|
| The | Apprenticeship | Journey |
| The application process was rigorous, but with the Elevate Programme’s training and encouragement, | | |

Student A gained the confidence to navigate it successfully. She was offered the apprenticeship and started her role in September, becoming the first in her family to enter the corporate sector.

Impact on the Family
Student A's achievement had a profound impact on her family. Her parents expressed heartfelt gratitude for the transformative changes this opportunity would bring, from improving financial stability to breaking generational boundaries. Inspired by her success, Student A's sibling, who was uncertain about their own future, began exploring opportunities. After a conversation with one of Student A's colleagues, the sibling decided to join the army, pursuing a path of personal growth and purpose.

This case study highlights the far-reaching impact of the Elevate Programme. By trusting the process and embracing new opportunities, Student A not only changed her own life but also transformed her family's trajectory. The support and guidance she received have kept both young people off the streets and on pathways to meaningful careers.

Student A's story is a powerful example of what is possible with an open mindset and the right support. The Elevate Programme proved to be a catalyst for change, unlocking potential and creating lasting positive effects on her family and community.

C: EVENTS

Over the past 18 months, Start Young UK has organised a series of impactful events, each contributing to the charity's mission. These events have served as vibrant platforms for community engagement, creating a positive and inclusive community atmosphere.

Highlights include:

Beauty & The Beast

We took 30 children and their families to see Beauty and the Beast, offering an unforgettable experience that inspired creativity and built confidence.

- **Discover Children's Story Centre**

We took 20 children and parents to Discover Children's Story Centre, sparking their imaginations and fostering a love for storytelling in an interactive and engaging environment.

- **London Zoo**

We took 20 children and parents to London Zoo, providing an inspiring day out that encouraged curiosity and learning about wildlife and conservation.

- **Potted Panto**

We took 15 children and parents to see Potted Panto at Wilton's Music Hall, treating them to a lively and entertaining performance that brought classic pantomime tales to life.

- **Christmas Fun Run**

Our Christmas Fun Run, in collaboration with Multiverse, brought together 50 participants to collectively run 552km. Together we raised over £6,338 to support our Christmas Gifting Initiative, combining community spirit with fitness to create a meaningful impact.

- **Christmas Gifting Programme**

Our Christmas Gifting Programme saw 25 volunteers come together to wrap over 700 gifts for more than 120 families including 30 individuals in the homeless unit.

D: CHRISTMAS GIFTING PROGRAMME

Our Christmas Gifting Programme exemplifies our commitment to making a tangible impact to the lives of those we serve. Since the initiative began in October 2021, we have distributed over 9,000 gift parcels to families in need. The funds raised £6,338 have enabled us to provide essential items such as underwear, socks, hats and gloves, along with thoughtfully curated personal hampers for parents and food hampers for entire families, spreading generosity and warmth throughout the festive season.

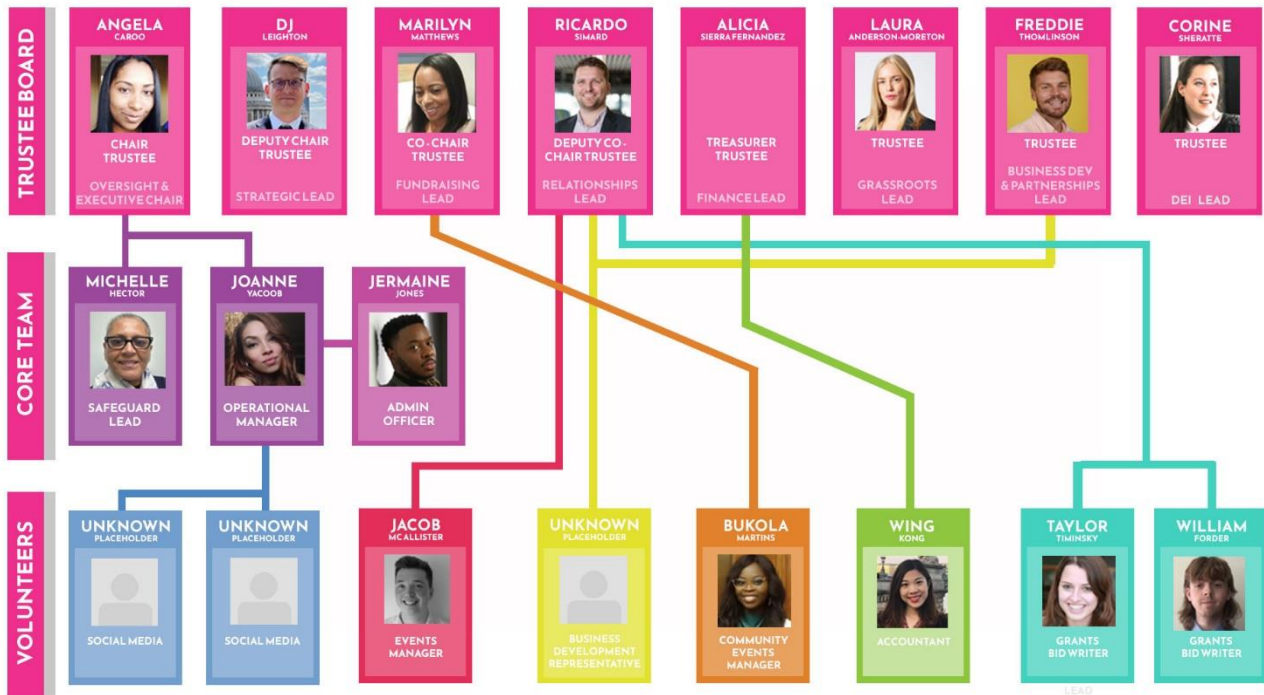
The **Christmas Gifting 2024** initiative was supported by over 25 dedicated volunteers, as well as generous donations from Asda, Poundland, Bloomberg, Barclays, Lloyds, LSEG, Multiverse and an incredible show of support from our wider community. Together, we ensured that the holiday spirit reached those who needed it most.

E: STAFFING

Over the past 12 months, Start Young UK has experienced significant growth, welcoming 6 new Trustees and 2 part-time staff members who bring diverse skills and expertise, enhancing our organisational capacity. We have also onboarded 5 core volunteers to cover specific areas, namely finance, grants and corporate/community events, enabling us to build the foundations for growth.

Our dedicated team of volunteers continues to contribute their time and passion, alongside partner volunteers who support our programmes. Collectively, this has brought our volunteer hours to over 1,500, not to mention the invaluable time donated by our trustees.

This period also saw changes in team composition, including departures and transitions. While we bid farewell to 2 valued members, these changes have opened doors for fresh perspectives, fostering continued growth and innovation.



F. FINANCE

Start Young UK Charity is pleased to present the financial report for the year ending 1st April 2024.

The following report outlines the Charity’s financial performance, sources of income, and the allocation of funds to various programmes.

Income sources

Start Young UK relies on a diversified set of income sources to support its mission. The primary contributors to the charity's revenue are as follows:

- 1. **Donations** - Generous contributions from individuals and organisations who share our commitment to the wellbeing of children and families in Newham.
- 2. **Fundraising** - Engagement in various fundraising events to gather financial support from the community.
- 3. **Buddy Donations** - Ongoing support from dedicated Buddies who contribute their time, effort and resources towards the success of Start Young initiatives.

Allocations of Funds

- 1. **School Uniforms** - Start Young UK has provided a full uniform to all children on the scheme, ensuring they have the necessary attire for their education.

2. Community Club Support - Uniforms for children attending the weekly Community club, including Beavers and Squirrels, have been purchased, fostering a sense of belonging and community engagement. Community Club weekly subscription for all children on the scheme is paid for by the charity.

3. Holiday Activities - Funds have been allocated to organise activities and various days out for families during the holidays, promoting recreational and bonding opportunities.

4. Christmas Gifting Programme - One of the highlights of our efforts is the Christmas Gifting Programme, where in 2024 over 1000 gifts – including personal care packages, toys, vests, undergarments and food hampers – were purchased, wrapped and distributed to low-income families in schools and the broader Newham community.

5. Staff Costs – Staffing expenditure for three part time employees.

Financial Highlights: 2nd April 2023 – 1st April 2024

Total Income as of 1st April 2024: £35,087

Total Spend as of 1st April 2024: £13,788

G: COLLABORATIONS AND PARTNERSHIPS

We have partnered and collaborated with the following organisations over the last 12 months:

- **Barclays** - key sponsor for the Elevate Programme and our upcoming Youth Empowerment Summit
- **London Stock Exchange Group** – donated 10 laptops to SYUK to support young people in continuing their education. They also provided matched funding to progress charity objectives and hosted a discovery day in their headquarters to provide insights on the Finance Industry and support on interviewing and the application process at LSEG.
- **University of East London** – Provided valuable support and resources and led an impactful session on careers planning and goals.
- **MET Police** – Shared opportunities within their apprenticeship program and highlighted the importance of diversity in policing.
- **Tech Mahindra** – Delivered an Elevate workshop in London, showcasing career paths within their organisation.
- **Multiverse** – Hosted the Festive Fun Run and led an Elevate workshop on the value of apprenticeships.
- **Lloyds** – Led a session on apprenticeship pathways, sharing insights into careers in the financial sector.

H: POTENTIAL RISKS & PROPOSED MITIGATIONS

Risk Management and Safeguarding Compliance

- We have taken all necessary steps to ensure risks are assessed, mitigated, and managed effectively. Any safeguarding concerns or issues that arise are promptly addressed by our designated Safeguarding Lead, who maintains thorough records. To date, we have had no safeguarding issues this year.
- As a charity, we are committed to proactively supporting families to prevent safeguarding concerns from developing.

Risk Assessments & Mitigation Measures

- We conduct comprehensive risk assessments for all venues used by the charity for the **Thrive** and **Elevate** programs, including informal visits to locations such as the zoo or theatre. These assessments ensure that all activities are carried out in a safe and controlled environment.
- For the **Elevate** program, risk assessments are shared with participating schools and colleges in advance, outlining key safeguarding considerations, including:
 - **Travel Safety** – Guidance on safe routes to and from the venue.
 - **Emergency Preparedness** – Identifying fire exits, fire wardens, and first aiders.
 - **Behavioural Expectations** – Setting clear guidelines for attendees.
 - **Special Requirements** – Ensuring accommodations for students with neurodiverse needs or other specific requirements.
- All relevant stakeholders, including catering teams, are informed of any necessary adjustments. For instance, due to an extreme allergy, all attendees are instructed not to bring nuts to the venue. When the London cohort visited LSEG, the menu was tailored accordingly, offering **nut-free, halal, and vegetarian options** to ensure inclusivity and safety.
- Through these measures, we ensure that all risks are identified, mitigated, and managed effectively, allowing us to create a safe and supportive environment for the young people and families we serve.

I: OUR PLANS FOR 2025

- Host Youth Empowerment Summit in May 2025.
- Expand our community engagement and fundraising activities on a more regular basis.
- Setup a scalable hub model allowing us to replicate our success across at least 2 new locations while maintaining quality and consistency.
- Expand existing revenue sources such as corporate partnerships, individual giving and volume/value of grants received
- Explore new revenue sources such as EDI Consultancy services, philanthropic fundraising



CHARITY COMMISSION
FOR ENGLAND AND WALES

Charity Name
Start Young UK

No (if any)
1196028

CC16a

| Receipts and payments accounts | | | | |
|--------------------------------|-------------------|----|-----------------|--|
| For the period from | Period start date | To | Period end date | |
| | 02/04/2023 | | 01/04/2024 | |

Section A Receipts and payments

| | Unrestricted funds | Restricted funds | Endowment funds | Total funds | Last year |
|---|--------------------|------------------|------------------|------------------|------------------|
| | to the nearest £ | to the nearest £ | to the nearest £ | to the nearest £ | to the nearest £ |
| A1 Receipts | | | | | |
| Buddy Donations | 3,649 | - | - | 3,649 | 3,457 |
| Just Giving | 389 | - | - | 389 | 2,096 |
| European Metals | | - | - | - | 3,000 |
| Groundworks (Tesco) | | - | - | - | 1,000 |
| Barclays Aspire Programme | 27,000 | | | 27,000 | |
| Family Holiday Association - Trip to Margate | 1,500 | | | 1,500 | |
| London Borough of Newham - King's Coronation Event | 500 | | | 500 | |
| Other | 2,049 | - | - | 2,049 | 240 |
| | - | - | - | - | - |
| | - | - | - | - | - |
| Sub total (Gross income for AR) | 35,087 | - | - | 35,087 | 9,793 |
| A2 Asset and investment sales, (see table). | | | | | |
| | - | - | - | - | - |
| | - | - | - | - | - |
| Sub total | - | - | - | - | - |
| Total receipts | 35,087 | - | - | 35,087 | 9,793 |
| A3 Payments | | | | | |
| Christmas Gifting | 1,457 | - | - | 1,457 | 3,387 |
| Other Gifting | 1,967 | - | - | 1,967 | 759 |
| Margate Trip | 1,513 | | | 1,513 | |
| King's Coronation Event | 453 | | | 453 | |
| | | | | | |
| Staff Costs | 7,101 | | | 7,101 | |
| Volunteer expenses | 452 | - | - | 452 | 620 |
| Insurance | 158 | - | - | 158 | 158 |
| Other administration expenses | 687 | - | - | 687 | - |
| | - | - | - | - | - |
| | - | - | - | - | - |
| Sub total | 13,788 | - | - | 13,788 | 4,924 |
| A4 Asset and investment purchases, (see table) | | | | | |
| | - | - | - | - | - |
| | - | - | - | - | - |
| Sub total | - | - | - | - | - |
| Total payments | 13,788 | - | - | 13,788 | 4,924 |
| Net of receipts/(payments) | 21,298 | - | - | 21,298 | 4,869 |
| A5 Transfers between funds | - | - | - | - | - |
| A6 Cash funds last year end | 4,869 | - | - | 4,869 | - |
| Cash funds this year end | 26,167 | - | - | 26,167 | 4,869 |

Section B Statement of assets and liabilities at the end of the period

| Categories | Details | Unrestricted funds to nearest £ | Restricted funds to nearest £ | Endowment funds to nearest £ |
|--|-------------------------|------------------------------------|----------------------------------|---------------------------------|
| B1 Cash funds | Cash at Bank | 26,167 | - | - |
| | | - | - | - |
| | | - | - | - |
| | Total cash funds | 26,167 | - | - |
| (agree balances with receipts and payments account(s)) | | OK | OK | OK |

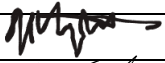

| Categories | Details | Unrestricted funds to nearest £ | Restricted funds to nearest £ | Endowment funds to nearest £ |
|---------------------------------|---------|------------------------------------|----------------------------------|---------------------------------|
| B2 Other monetary assets | | - | - | - |
| | | - | - | - |
| | | - | - | - |
| | | - | - | - |
| | | - | - | - |
| | | - | - | - |

| Categories | Details | Fund to which asset belongs | Cost (optional) | Current value (optional) |
|-----------------------------|---------|-----------------------------|-----------------|--------------------------|
| B3 Investment assets | | | - | - |
| | | | - | - |
| | | | - | - |
| | | | - | - |
| | | | - | - |

| Categories | Details | Fund to which asset belongs | Cost (optional) | Current value (optional) |
|---|---------|-----------------------------|-----------------|--------------------------|
| B4 Assets retained for the charity's own use | | | - | - |
| | | | - | - |
| | | | - | - |
| | | | - | - |
| | | | - | - |
| | | | - | - |
| | | | - | - |
| | | | - | - |

| Categories | Details | Fund to which liability relates | Amount due (optional) | When due (optional) |
|-----------------------|---------|---------------------------------|-----------------------|---------------------|
| B5 Liabilities | | | - | |
| | | | - | |
| | | | - | |
| | | | - | |
| | | | - | |

Signed by one or two trustees on behalf of all the trustees

| Signature | Print Name | Date of approval |
|---|------------------|------------------|
|  | Marilyn Matthews | 31 / 01 / 2025 |
|  | Ricardo Simard | 31 / 01 / 2025 |



Section A

Independent Examiner's Report

**Report to the trustees/
members of**

Charity Name
Start Young UK

**On accounts for the year
ended**

1 April 2024

**Charity no
(if any)**

1196028

Set out on pages

2 to 3

I report to the trustees on my examination of the accounts of the above charity ("the Trust") for the year ended 01/04/2024.

**Responsibilities and
basis of report**

As the charity trustees of the Trust, you are responsible for the preparation of the accounts in accordance with the requirements of the Charities Act 2011 ("the Act").

I report in respect of my examination of the Trust's accounts carried out under section 145 of the 2011 Act and in carrying out my examination, I have followed the applicable Directions given by the Charity Commission under section 145(5)(b) of the Act.

**Independent
examiner's statement**

I have completed my examination. I confirm that no material matters have come to my attention in connection with the examination which gives me cause to believe that in, any material respect:

- accounting records were not kept in accordance with section 130 of the Act or
- the accounts do not accord with the accounting records

I have no concerns and have come across no other matters in connection with the examination to which attention should be drawn in order to enable a proper understanding of the accounts to be reached.

Signed:

N M Wheat

Date:

13/01/2025

Name:

N M Wheat

**Relevant professional
qualification(s) or body
(if any):**

Institute of Accountants and Bookkeepers

Address:

Unit 1, The Oast

Whetsted Road

Tonbridge TN12 6RR

START YOUNG UK

England & Wales - Charity number 1196028

Accounts

Start Young UK
Empowering young people to Achieve

Charity Trustee Report 2021 -2023



MONTHLY REPORT INDEX

SECTION 1

1. EXECUTIVE SUMMARY

SECTION 2

- A) ABOUT US
- B) PROGRAMS/PROJECTS
- C) EVENTS
- D) CHRISTMAS GIFTING
- E) STAFFING
- F) FINANCE
- G) PARTNERSHIPS/COLLABORATIONS

SECTION ONE

1. EXECUTIVE SUMMARY

| Item | Description |
|-------------|---|
| A | Shares an overview of the charity aims and objectives. |
| B | Synopsis of programs run via the charity. |
| C | Events held over the last 18 months for young people on the program. |
| D | Since we started the Christmas gifting initiative, we have gifted over 6000 gift and personal care packages and Hampers to children and their families. |
| E | Update on staffing and new hires. |
| F | All donations, grants and spends. |
| G | Collaborations & Partnerships – This section will share the key stakeholders who have contributed, supported and collaborated with the charity. |

SECTION 2

A. ABOUT US

Start Young UK is a registered charity and as such, our promise is to act as a resource for young people living in underprivileged and/or disadvantaged areas, from the age of 5 up to the age of 18. With a strong ethos of hard work and support we are engaging with schools and families to ensure we are providing a range of advice, assistance and leisure activities within London and the surrounding Boroughs.

B. PROGRAMS AND PROJECTS

The charity currently run two programs “Start Young Uk Program” & “The ASPIRE program”.

“Start Young UK program” is a comprehensive initiative providing holistic support to underprivileged children in their educational journey from the age of 5-18. The program encompasses mentorship initiatives, connecting students with experienced individuals for guidance. Skill-building workshops aim to develop practical skills, enhancing abilities and broadening future opportunities. Practical support includes supplying school uniforms and establishing school clubs to promote extracurricular activities and a sense of belonging. The program seeks to break down barriers to education, empowering children with essential life skills and fostering an environment that cultivates personal and academic growth.

“The ASPIRE program” aim is to encourage and support young people from socio-economically deprived backgrounds to aspire and achieve in areas of employment, skillset and qualifications. The program will support with a comprehensive set of personal and interpersonal skills which will contribute to their future careers and provide gateways for further opportunities. This program is for young people from the ages of 16-18yrs.



Our Start Young UK program supports children referred from schools into our academic accelerator program. We buddy them with a mentor, attendance into the community club one evening per week, and a full logo school uniform to feel included. We provide a 360 Holistic approach to meeting the needs of the community.



Our ASPIRE program in partnership with Barclays CSO, aims to encourage and support young people from socio-economically deprived backgrounds, to aspire in areas of employment, skillset and qualifications will appeal to employers and their communities.

Case Study – Family A

We are currently supporting a child whose parents are struggling with addiction. This child was not eating, was not participating in class activities, and was extremely withdrawn. He would hide under the table when he heard loud noises. Since joining the SYUK program in 2021, we have received nothing but positive feedback from the teachers and parents we work with. One year after enrolling into our scheme, he is not only raising his hand in class but also responding to questions and getting involved in class discussions, flourishing in the community club, and developing a strong bond with his buddy. We have also enrolled his two siblings, who are really enjoying the scheme with confidence.

C. EVENTS

Over the last 18 months, StartYoungUK has orchestrated a series of impactful events, each contributing to the organisations mission. These events have served as vibrant platforms for community engagement, creating a positive and inclusive community atmosphere.

Queens Platinum Jubilee - June 2022

Barclays Hackathon/ Code Fest – October 2022

The aim of this program was to provide the charity with a bootstrap to our web presence, automate our processes and help grow our reach. The hackathon ran from midday to the following day.

Barclays Charity Hackathon, supported our charity in partnership with Microsoft with a two-day code fest, many teams worked around the clock, to support and create their vision of what a charity app would look like.

Summer Charity Picnic - August 2022

We hosted a vibrant Summer Charity Picnic, creating an atmosphere filled with laughter and joy for the children. The event featured an array of engaging sport and fun activities, providing many opportunities for active participation. Each child received an individual picnic bag filled with delicious treats. Sweet treats added an extra layer of delight to the festivities. The picnic not only brought the community together for a day of shared enjoyment but also exemplified our commitment to creating memorable and inclusive experiences for the children.

Greenwich Theatre, Robin Hood Performance – December 2022

Adding to our repertoire of enriching experiences, StartYoungUK organized a memorable trip to Greenwich Theatre, treating our participants to a captivating performance of “Robin Hood”. The outing, filled with the excitement of live theatre, offered children a delightful blend of entertainment and cultural exposure. As part of our commitment to holistic development, these experiences extend beyond the classroom, nurturing a love for the arts and fostering a well-rounded appreciation for creativity among the young minds we serve.

Easter Adventure at Hargreaves Scout Campsite – March 2023

In the spirit of Easter, we organised a delightful trip to Hargreaves scout campsite, providing children with a day of brimming with outdoor excitement and festive activities. The day unfolded with an Easter Egg hunt, as children joyfully scoured for hidden treasures. Indoors, a variety of fun Easter-themed activities further enriched the day, emphasizing our dedication to our aim.

D. CHRISTMAS GIFTING

Our Christmas fundraisers underscore our dedication to making a meaningful difference in the lives of those we serve. Since we have started this fundraiser, we have gifted over 6,000 gift parcels to families. Funds raised enable us to provide essential items such as underwear, socks, hats, gloves, as well as thoughtful personal hamper sets for the parents and food hampers for the entire families, ensuring that the spirit of generosity echoed through our community during the festive season.

Christmas Gifting 2021

Through the generosity of our community, these contributions enabled us to deliver over 1000 gifts, ensuring that children and their families experienced the warmth and joy of the holiday season. The success of the initiative this year laid the groundwork for our subsequent impactful Christmas campaigns and allowed us to learn more to grow for next year Christmas gifting.

Christmas Gifting 2022

Building on the success of the previous years, our Christmas 2022 fundraiser exceeded expectations. Over 1400 gifts were distributed, thanks to the unwavering support received through our website and sponsor contributions. This initiative not only brought joy to countless families but also raised enough funds to continue our mission of providing essential items during the festive season.

E. STAFFING

In the past 18 months, StartYoungUK welcomed 3 new members to our team, bringing diverse skills and experiences that enrich our organizational capabilities.

During this period, there have been changes in our team composition, including departures and transitions. While we bid farewell to valued members, these changes have opened opportunities for fresh perspectives and growth.

In collaboration with our new partnership with Barclays to introduce the Aspire program, we have received funding for 2 part time employees to manage the Aspire Program for its launch in January 2024 with contracts fulfilled for 1 year.

We currently have two trustees, 7 volunteers, and 3 paid staff.

E. FINANCE

Start Young UK Charity is pleased to present the financial report for the year ending 31st March, 2023.

The following report outlines the Charity's financial performance, sources of income, and the allocation of funds to various programs. Income sources Start Young UK relies on a diversified set of income sources to support its mission. The primary contributors to the charity's revenue are as follows:

1. Donations Generous contributions from individuals and organisations who share our commitment to the well-being of children and families in Newham.
2. Grant Applications Secured a successful grant from Groundworks Tesco to assist with the costs for weekly attendance for children attending the Community Club.
3. Fundraising Engaged in various fundraising events to gather financial support from the Community.
4. Buddy Donations Ongoing support from dedicated Buddies who contribute their time, resources, and efforts towards the success of Start Young initiatives.

Allocations of Funds

1. School Uniforms Start Young has provided a full uniform to all children on the scheme, ensuring they have the necessary attire for their education.
2. Community Club Support Uniforms for children attending the weekly Community club, including Beavers and Squirrels, have been purchased, fostering a sense of belonging and community engagement. Community Club weekly subscription for all children on the scheme is paid by the charity.
3. Holiday Activities Funds have been allocated to organise activities and various days out for families during the holidays promoting recreational and bonding opportunities.
4. Christmas Gifting Initiative One of the highlights of our efforts is the Christmas gifting program, where over 800 gifts, including personal care packages, toys, vests, undergarments, and food hampers, were gifted and distributed to low income and disadvantaged families in schools and the broader community in Newham.

Financial Highlights: Total Income: £9,793 Inclusive of Donations: Grant Funding: Fundraising: Buddy Contributions:

Total Spend as of 31st March 23: £4,924 Inclusive of School Uniforms: Community Club: Holiday Activities: Christmas giving Initiative:

G. COLLABORATIONS AND PARTNERSHIPS

We have partnered and collaborated with the following organisations over the last 18months:

11th Newham West Scouts

EMR

Barclays Chief Security Office

London Borough of Newham Schools

University of East London

Newham College