

**Registered Charity No. 1195982**

**The Parochial Church Council of the Ecclesiastical Parish of**

# **All Saints, Ladbroke**



## **ANNUAL REPORT**

**prepared for the**

**Annual Parochial Church Meeting**

**Sunday 26 March 2023**

## Contents

	Page
Membership of the PCC	3
Electoral Roll Report	4
Vicar's Report	4
Church Wardens' Report	6
Deanery Synod	7
Fabric Report	7
All Saints for All Generations Project	9
Southam St James C of E Academy	10
Treasurer's Report	11
Statutory Information	12

Thank you to all those who have contributed to these reports, and those mentioned in them. They help to demonstrate how much goes on in our Church. We hope that you enjoy reading them.

## Membership of the PCC

The PCC is the legal body responsible for the Church. It is required to operate according to rules, regulations and procedures set out in two pieces of legislation, the Parochial Church Councils (Powers) Measure 1956 (as amended) and the Church Representation Rules (contained in Schedule 3 to the Synodical Government Measure 1969, as amended).

The Church is legally regarded as a Charity and the members of the PCC are regarded as its trustees and carry the responsibilities of Charity Trustees. Charities with annual income in excess of £100,000 are required to formally register with the Charity Commission and as we reached this level in 2020 that registration has now been completed and the Church is now registered as “The Parochial Church Council of the Ecclesiastical Parish of All Saints, Ladbroke”, with the charity registration number 1195982.

The membership of the PCC consists of ex-officio members and elected members. All clergy licensed to the Parish, its Church Wardens and Deanery Synod representatives are ex officio members. The number of elected members is determined by the size of the Electoral Roll and are elected annually at the APCM. The PCC is required to appoint a Standing Committee to make any emergency decisions that may need to be made between meetings.

The members of the PCC from 1<sup>st</sup> January 2022 to the date of this report have been as follows:

*Ex-officio:*     Revd. Andy Batchelor\* *Priest-in-Charge*  
                     Mrs Susan Moore\* *Church Warden*  
                     Mr Peter Rigby\* *Church Warden*  
                     Mrs Susan Lord *Deanery Synod Representative*  
                     Mrs Jenny Rigby *Deanery Synod Representative*

*Elected:*       Mrs Margaret Bosworth  
                     Mrs Janet Moore  
                     Mrs Jackie West\*  
                     Mr David Wright

*Secretary:*     Mrs Joan Perry

*\* Members of the Standing Committee*

The Church Representation Rules define the principal function, or purpose, of the PCC as “promoting in the parish the whole mission of the Church”.

## Electoral Roll Report

The Electoral Roll is completely revised every six years and this happened last in 2019. In the years in between a full revision, members remain on the Roll unless they request their removal; new members can also be added upon application. After last year's revision there were 37 members; at the time of writing there have no changes but any additions will be reported at the meeting.

*Janet Moore (Electoral Roll Officer)*

## Vicar's Report

Well it is hard to believe that I have now been here for almost two and a half years. Time certainly seems to have flown by! One of the things that saddens me most is the loss of some much loved and central members of our congregations at Harbury and Ladbroke, particularly Beryl Checkley from Harbury and Betty Winkfield from Ladbroke, both of whom had given so much over so long to the work of the church in our villages and it seems I had so little time to get to know them. This year the congregation at Ufton made the painful but courageous decision to request closure of the church building, a process that will take a considerable time, although baptisms, weddings and funerals can continue there for the time being.

This year has seen the appointment of a new head, Lucy Boswell, at Harbury school, something that has transformed the relationship between church and school, and has opened up all sorts of exciting opportunities to work with the children, teachers and parents. Julie and I have been part of the Open the Book team which do such valuable work there, and the church now take assemblies each week.

I have taken over the role of Area Dean from Martin, after his long and faithful service, and we certainly face a time of change in the Deanery as we lose Rev Gillian from the Bridges team, and Rev Hugh from the Offchurch team. We pray that God will bring in new clergy with a heart for rural ministry and a desire to work together with all our parishes. The structure of the Deanery is also under review and we may well be working closely with the new Mission hub based in Leamington, and receiving support for the vacancies from Rugby Deanery.

In my role as Assistant DDO I continue working with candidates for ordained ministry, something I enjoy greatly, as together we try to work out the nature of Gods call on these faithful people.

Last year we held the 'Festival of Hope' at Harbury, something that was greatly appreciated by many in the local community and further afield, and it was great to see so many taking part.

We said goodbye to Alison as reader in Harbury as she moved into her curacy, but we also welcomed Rev Bob back after his stint at Long Itchington. In addition we were joined by the Rev Barry for a placement with us, and I want to thank everyone for the warm welcome given to Barry, and I know you will appreciate his ministry with us for as long as it continues.

This year has seen a welcome increase in the numbers of families and young people we are engaging with. Messy church is going from strength to strength, we have begun 'Muddy Church' once a month, and the youth work run by Ann Clucas and her team has been flourishing. We have seen new families come in to our all age service at Ladbroke which has been wonderful, and I cannot thank enough all the volunteers involved in this work, as it is so encouraging to see these young lives being blessed by all you do.

We had some marvellous Harvest celebrations in both churches, and moving Remembrance services, events that are particularly important in our rural communities.

I have had a couple of health issues this year as the arthritis in my left knee continues to deteriorate, and I am hoping to be placed on the list for a replacement soon. I also had a painful couple of months after straining a thigh muscle in my right leg which seemed to take forever to heal!

I have continued my involvement with the Harbury Theatre group, something that brings me into contact with a whole new community, and I know many of you have appreciated their productions.

I am looking forward to this last year being the final one with no heating in Harbury church, and again I would like to pay tribute to the team led by Philip, who have done such sterling work to make this happen. In the same vein I know all at Ladbroke would join me in my huge thanks to Jackie who has been such a lynchpin for the restoration work that has taken place there and is just about to be signed off.

There was more happening over Christmas last year as COVID restrictions disappeared, and we were able once more to lay on the traditional Carol services, and carol singing at both parishes.

I am sure there will be details from other groups in the annual report, including the Mothers Union, Bumps and Bundles, and Meeting Point, and I have been pleased to see the house groups at Harbury re-convening after the COVID closures. Thank you to all who take a lead in these organisations.

I am thrilled that we have begun to run 'The Collective' at the Shakespeare pub, with a team from both churches led by Gill Guildford, and it's been great to see a real interest in the local community for these events. This is a real evangelistic opportunity!

It's been great to offer support to those who need it in our communities, through our support fund at Harbury and the help we have offered to the Ukrainian families. I know

people have been really touched by this practical assistance which is part of our calling as Gods people in these places.

I have been involved in a number of Diocesan events and meetings, but I want to assure you that my primary focus now and always are the parishes I serve, although my wider roles have enabled me to build new relationships across the Diocese.

As a family we continue to feel blessed that God called us to be with you here and Julie, Abi, Amy and Jamie love these communities and living in such a wonderful place.

Thank you to the many, many people who contribute so much to the life of our church communities, a particular thanks tour wardens and PCC's, a special thank you to Michael, who steps down as warden this year, and to Andy Dean who is stepping in.

Looking back I am encouraged by the growth we see, and I believe there is more to come as we look to the future and all that God will do here.

*Rev Andy*

## Church Wardens' Report

As Church Wardens, we are helped enormously by those assist us in all manner of ways: all those on the stewarding/welcoming rota who help each Sunday, those who will step in as "assistant wardens" when needed, and all those who have taken on particular responsibilities – rota organising, buying supplies, cleaning, flower arranging, p.a. operating, clock winding, anything else that needs doing. We would again particularly like to thank Jackie for all her work as Fabric Officer and All Saints for All Generations Project Coordinator, and Kate for continuing to play the organ each week.

Each year, we have to provide statistics to the Diocese and these provide an interesting snapshot of how the Church is changing:

	2022	2021
Average Sunday attendance (adults)	24	22
Average Sunday attendance (children)	1	1
Our "worshipping community"	67	53
Baptisms	3	4
Weddings	1	1
Funerals	2	2

The most interesting (and encouraging) statistic is the increase in our "worshipping community". It is always good to be able to welcome new friends into the Church family.

*Sue Moore and Peter Rigby*

# Deanery Synod Report

Synod has met a number of times this year and the focus has remained on developing a revised vision and strategic plan for the Southam Deanery. The Deanery has now appointed a new Lay Chair and Area Dean (our Rev Andy!) during this past year. The Deanery has seen a number of challenges in appointing incumbents to vacant clergy posts or long term sickness of current incumbents, resulting in long term cover provided by retired clergy and others. An appointment has been made to Long Itchington & Marton in the autumn of 2022. Topics of discussion this year has included how churches meet the increasing challenges of rising costs, such as costs of fuel/heating. The Synod has also recently discussed the Living in Love and Faith Report and its implications.

*Jenny Rigby*

## Fabric Report

### MAJOR REPAIRS

Thanks to the National Lottery Heritage Fund and all the partnership funding given and raised in preceding years during 2022 we

- renovated the lychgate
- refixed the lead on the aisle roofs so it can now expand and contract more freely; the splits which had formed were patched
- put up the new window guards on the three saints and ascension windows, the latter is a great improvement as you can now see the mullions
- had a ground investigation by the twisted buttress and two reference points. Based on the data obtained, the structural engineer and architect agreed that for now we should just have mason repairs, ie repointing, but consider underpinning or equivalent when we do work on the drains.

In 2019, Ladbroke Church was put on the Heritage at Risk register. We have now dealt with the major issues and invited the assessor back.

Of course repairs and maintenance on such an old building never end, indeed we have a long list of more minor issues from the 2019 Quinquennial inspection still to tackle, as well improving the drains which we took out of the Lottery funded project to avoid delays.

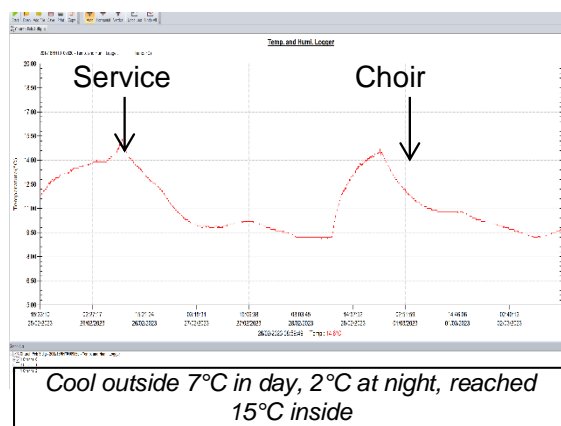
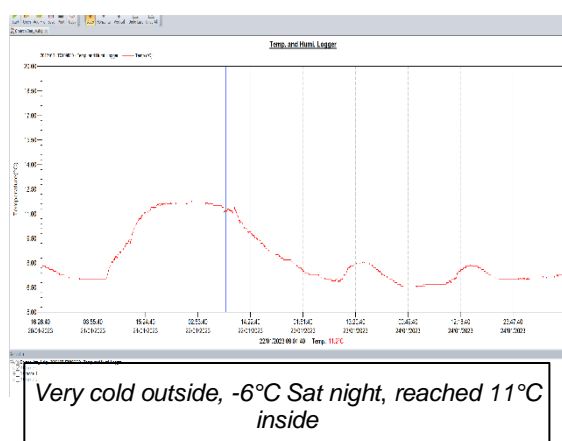
### LIGHT & HEAT

The main lights in the nave were changed from compact fluorescent to LED bulbs.

The last of our 3 gas boilers was replaced, also the thermostat.

Due to the huge increase in cost of gas, we are monitoring temperature inside and tweaking the the heating programme to maximise value for money. The background setting is 7°C so if the thermostat inside falls below this, the heating will come on. During the winter

- Having the heating on for 20-24 hours before a 9/10.30am service it gets up to 11-15°C, depending on outside temperature. Most of the increase is daytime on the Saturday and the heating system on full just holds this temperature overnight, even though it is set at 17°C for the last few hours it never gets that high.
- Having the heating on for 10 hours before a choir practice, it gets up to about 15°C
- After services/choir practice the temperature drops
- The building warms up slightly during the day and drops at night



The Church of England has said it will be net zero by 2030. This is now only 7 years away and so we need to start considering this now. I (Jackie) am prepared to join a team working on this, but not to lead it.

THANK YOU

We appreciate the support we have had from various professionals to do major work. There are also many volunteers that keep the building going and welcoming to all who enter. They do maintenance, cleaning, wash the altar linen, clean brass, organise the prayer corner, give and arrange flowers, lock and unlock the building every day, wind the clock twice a week, discourage the mice, garden in the churchyard and much more besides. Please join me in thanking each and everyone of them - church members, villagers and their families.

*Jackie West*



## All Saints for All Generations project

We started fundraising for this project to repair Ladbroke Church and share our heritage in 2015. The delivery phase began in 2020 and continued throughout 2022. Although there was less work on repairs in 2022 (see fabric report) it was another busy year for interpretation and community engagement activities. These included:

- Treasure Trail booklet – with artwork by Jessica Hartshorn and local children at workshops she led.
- Stained glass book
- Tours by our trained guides for groups and individuals, including Thanks to You Lottery Players and Heritage Open Day events.
- Off site talks on Stained Glass and Alice and the Adventurer
- Making a 3-d printed plastic replica of the Dudley Plate paten
- Our photo exhibition went on tour to 2 Care homes.
- Another on-line photo exhibition - A picture a day during May
- Exhibitions in the phonebox – Queen's Jubilee, Our Heritage, Local Record Breakers
- More photos and information about memorials in the churchyard loaded onto the Billion Graves website
- More translations of the Village Trail leaflet so this is now available on-line in French, German, Italian, Spanish and Romanian, with Ukrainian & Russian in progress
- Ladbroke Church Stones & Fossils tours and a booklet on this published
- Another Rock Detectives family session
- School Sessions – two classes came to Ladbroke, many more had Rocks & Fossils sessions at their school.
- Heritage and Friendship Group started its monthly get togethers.

We have now spent c £450,000, engaged more than 2200 people with our heritage (including 500 children) and 79 volunteers have contributed 542 days of their time. That wonderful support from our congregation, villagers and beyond. Huge thanks to all of them for sharing their time and skills.

To my relief as project leader, the Lottery funded project will finish in 2023 but many of the things we have started will carry on during the project's legacy phase in the coming years.

*Jackie West*

## Southam St James C of E Academy

Since the last report, the school has seen the departure of the Executive Head, Ali Hine. With Ali Hine's departure the Coventry Diocesan Multi Academy Trust has approved a change in the leadership structure. With effect from March 2023, the school will be led by a Head teacher and supported by a Deputy Head. Laura Constable, who has been with the school for 21 years and most recently held the post of Head of School has been appointed as Head teacher. It is planned to appoint a Deputy Head by September 2023. In the intervening period an Interim Head of School, appointed by the DMAT, is supporting Laura.

Following the DMAT's Transformation Project, which I mentioned in last year's report, the governors continue to focus on their new roles as set out in the DMAT's Scheme of Delegation. The main development areas for the Academy Governance Committee, are the school's relationship with the Churches, community engagement and the school's Christian distinctiveness.

In January 2023, the School had an Ofsted inspection. The school was judged as requires improvement. The DMAT and the Headteacher have prepared a post-Ofsted Action Plan to improve leadership and management, behaviour and attitudes and quality of education. The Head teacher will be supported by the DMAT's School Improvement Partner and the Interim Head of School, in implementing the Action Plan.

The past year has continued to be impacted by Covid-19 with higher-than-normal teacher and pupil absences. Covid-19 has also impacted on pupil mental health requiring additional support for children and additional training for staff.

The school has also had closures due to strike action by teaching staff.

There have been several resignations from the Academy Governance Committee together with the completion of governor 4-year terms. Debra Brown, who was Chair of Governors, completed her 4-year term at the end of the summer term last year. Co-Chairs, Sara Wisniewski and Roderick Clark were appointed in September 2023. The Academy Governance Committee has had interest from two prospective governors and All Saints has been asked to consider appointing an additional Foundation Governor. My term of office will end in Spring 2024, and I do not intend to seek re-appointment.

*Valerie Copley*

## Treasurer's Report

The accounts for the year ended 31<sup>st</sup> December 2022 are being distributed with this Annual Report. Thank you to Steve Copley for being our Independent Examiner and also to David Wright for administering our Gift Aid scheme.

During the year, our total income was £61,000 and our total expenditure £73,000. The largest component of both of these numbers was the income and expenditure related to the All Saints for All Generations Project, which is the largest of our restricted funds and accounted for £37,000 and £48,000 (60% and 66%) respectively. Also included in restricted funds are donations to a Ukrainian refugee support fund and a new Organ Fund.

Most of our regular and ongoing activities are carried on through unrestricted funds. These are shown in the left hand column on page 2 of the Accounts. Our total unrestricted income was £24,337 and expenditure was £24,901 so there was a small deficit of £564.

The biggest challenge we have faced, which is carrying on into 2023, is the increase in fuel costs, particularly for heating. Our fixed term contract for gas increased by 475% in October 2022; under the terms of the contract this could not be renegotiated but we shall be going out to tender for a new supplier when this contract ends.

The completion of most of the AS4AG works has coincided with an upturn in interest rates, so since the year end the majority of our surplus funds have been placed on deposit and are now earning interest.

During the year we saw a decrease in planned giving from £16,000 to £14,000, but this was offset by an increase in "one off" gifts. The former could be interpreted as a cause for concern, but overall our financial position continues to be stronger than that of many village churches and that is largely due to the generosity of our members. Thank you again to all who continue to give faithfully towards the work of the Church.

*Peter Rigby*

## Statutory information

The PCC, as the trustees of the charity, are required to include certain information in this Annual Report. These statutory requirements are set out below, together with the information or an explanation of how it has been provided.

### **Objective**

The objective of the charity is to promote in the parish the whole mission of the Church. Within the Diocese of Coventry, that Mission is summarised as “Worshipping God – Making new disciples – Transforming communities”.

### **Activities, achievements and performance**

Our activities, achievements and performance during the year have been described in the various reports above. The trustees have had regard to the Charity Commission’s guidance on public benefit and comply with the legal and Diocesan requirements with regard to safeguarding.

### **Financial review**

See Treasurer’s Report above.

### **Structure, governance and management**

See the section entitled ‘Membership of the PCC’ above.

### **Reference and administrative details**

The Charity is formally known as ‘The Parochial Church Council of the Ecclesiastical Parish of All Saints, Ladbroke’ and is registered in England and Wales, number 1195982. Its name is frequently abbreviated to “All Saints, Ladbroke” or “Ladbroke Church”.

The address of the Church is Church Road, Ladbroke, Southam CV47 2DF.

The principal postal address for correspondence is  
2 Vicarage Lane, Harbury, Leamington Spa CV33 9HA.

Email: [ladbrokechurch@gmail.com](mailto:ladbrokechurch@gmail.com)

Website: [www.ladbrokechurch.org.uk](http://www.ladbrokechurch.org.uk)

Signed on behalf of the PCC

Rev A G Batchelor

**THE PAROCHIAL CHURCH COUNCIL OF THE  
ECCLESIASTICAL PARISH OF**

**ALL SAINTS, LADBROKE**

(Registered Charity No. 1195982)

**ACCOUNTS**

**FOR THE YEAR ENDED**

**31 DECEMBER 2022**

CONTENTS

	page
Statement of Financial Activities	2
Independent Examiner's Report	2
Balance Sheet	3
Notes to the Accounts	4 - 7

**THE PAROCHIAL CHURCH COUNCIL OF THE ECCLESIASTICAL PARISH OF  
ALL SAINTS, LADBROKE  
YEAR ENDED 31 DECEMBER 2022**

**STATEMENT OF FINANCIAL ACTIVITIES**

	Note	Unrestricted Funds £	Restricted Funds	Endowment Fund	2022 Total £	2021 Total £
<b>Income from:</b>						
Donations and legacies	2	22,694	36,301		58,995	199,839
Charitable activities	3	1,642	624		2,266	2,223
Investments		1	113		114	109
<b>Total</b>		<u>24,337</u>	<u>37,038</u>	<u>-</u>	<u>61,375</u>	<u>202,171</u>
<b>Expenditure on:</b>						
Charitable activities	4	24,901	47,794		72,695	233,185
<b>Total</b>		<u>24,901</u>	<u>47,794</u>	<u>-</u>	<u>72,695</u>	<u>233,185</u>
(Loss)/Gain on investments				(502)	(502)	538
<b>Net income/(expenditure)</b>		<b>(564)</b>	<b>(10,756)</b>	<b>(502)</b>	<b>(11,822)</b>	(30,476)
<b>Reconciliation of Funds</b>						
Total funds brought forward		42,879	84,472	4,280	131,631	162,107
Total funds carried forward	10	<u>42,315</u>	<u>73,716</u>	<u>3,778</u>	<u>119,809</u>	<u>131,631</u>

*The notes on pages 4 to 7 form part of these Accounts*

**Report of the Independent Examiner**

I have examined these Accounts, Balance Sheet and Notes thereon in conjunction with the books, papers and other information produced. In my opinion the accounts as presented correctly reflect the transactions of All Saints Church Ladbroke during the year ended 31st December 2022 and the Balance Sheet shows the position as at that date.

Signed:

Date:

**THE PAROCHIAL CHURCH COUNCIL OF THE ECCLESIASTICAL PARISH OF  
ALL SAINTS, LADBROKE  
YEAR ENDED 31 DECEMBER 2022**

**BALANCE SHEET**

	Note	2022 £	2021 £
<b>Fixed assets:</b>			
Investments	7	3,778	4,280
<b>Current assets:</b>			
Debtors	8	7,020	24,478
Cash at bank and in hand		<u>111,601</u>	<u>106,070</u>
		118,621	130,548
<b>Liabilities:</b>			
Creditors: amounts falling due in less than one year	9	(2,590)	(3,197)
<b>Net current assets</b>		<u>116,031</u>	<u>127,351</u>
<b>Net Assets</b>		<u>119,809</u>	<u>131,631</u>
<b>Funds of the charity:</b>			
Endowment fund		3,778	4,280
Restricted funds		73,716	84,472
Unrestricted funds		42,315	42,879
<b>Total charity funds</b>	10	<u>119,809</u>	<u>131,631</u>

Approved by the PCC on 23 February 2023  
and signed on their behalf by:

Revd. A G Batchelor  
Priest in Charge

*The notes on pages 4 to 7 form part of these Accounts*

**THE PAROCHIAL CHURCH COUNCIL OF THE ECCLESIASTICAL PARISH OF  
ALL SAINTS, LADBROKE  
YEAR ENDED 31 DECEMBER 2022**

**NOTES TO THE ACCOUNTS**

**1. ACCOUNTING POLICIES**

**(a) Basis of preparation**

The accounts have been prepared on the historic cost basis of accounting and in accordance with the Church Accounting Regulations 1997 together with applicable accounting standards and the Charities SORP (FRS 102).

The accounts include all transactions, assets and liabilities for which the PCC is responsible in law. They do not include the accounts of church groups that owe their main affiliation to another body nor those that are informal gatherings of Church members.

**(b) Funds**

*Endowment Fund*

The Sabin-Smith Endowment Fund derives from a legacy from the estate of Alfred Edward Sabin-Smith who left a duty to the Coventry Diocesan Trustees (Registered) to invest the legacy and to pay the net annual income arising therefrom to the PCC, for the upkeep of the Churchyard with a request to keep the family graves in good order. Income from the legacy is applied to the Churchyard restricted fund.

*Restricted Funds*

The charity operates the following restricted funds:

- (i) Donations received for the upkeep of the Churchyard are credited to the Churchyard Fund. Any relevant expenditure in excess of available restricted income is charged to the General Fund.
- (ii) The All Saints For All Generations Fund was established as an Appeal Fund to finance the repairs necessary to our Grade I listed building. Donations and grants received for the upkeep of the building are credited to the fund. Building repairs and heritage activities carried out as a condition of grants received are charged to it.
- (iii) The Organ Fund represents donations received specifically for the maintenance of the church organ and expenditure applied for this purpose.
- (iv) The Ukrainian support fund receives donations from church members and the local community in order to provide assistance to those displaced by the war in Ukraine, particularly those who have come to the local area.

Any grants or donations received for a specific purpose are treated as restricted funds. Any funds designated for a specific purpose by the PCC are treated as unrestricted. These include the Bell Tower Fund and the Choir Fund.

The General Fund represents the funds of the PCC that are not subject to any restrictions regarding their use and are available for application on the general purposes of the PCC.

**(c) Incoming resources**

*Voluntary income and capital sources*

Collections are recognised when received by or on behalf of the PCC.

Planned giving receivable under covenant is recognised only when received.

Income tax recoverable on covenants or gift aid donations is recognised when the income is recognised.

Grants and legacies to the PCC are accounted for as soon as the PCC is notified of its legal entitlement and the amount due.

Funds raised by events and activities are accounted for gross.

*Income from investments*

Interest is accounted for when receivable. Any tax recoverable on such income is recognised in the same accounting year.

**(d) Resources used**

*Activities directly relating to the work of the Church*

The Parish Share is accounted for when payable. Any portion unpaid at the year end is provided for in these accounts in recognition of an operational (but not a legal) liability.



**THE PAROCHIAL CHURCH COUNCIL OF THE ECCLESIASTICAL PARISH OF  
ALL SAINTS, LADBROKE  
YEAR ENDED 31 DECEMBER 2022**

**NOTES TO THE ACCOUNTS**

**(e) Fixed assets**

*Consecrated land and buildings and movable church furnishings*

Consecrated and beneficed property is excluded from the accounts by s.10(2)(a) of the Charities Act 2011.

*Fixed asset investments*

Investments are included in the balance sheet at fair value and the gain or loss taken to the Statement of Financial Activities.

*Other fixtures, fittings and office equipment*

No value is placed on movable church furnishings held by the churchwardens on special trust for the PCC and which require a faculty for disposal since the PCC considers this to be inalienable property. Any expenditure incurred during the year on consecrated or benefice buildings and movable church furnishings, whether maintenance or improvement, is written off as expenditure in the SOFA and separately disclosed.

*Current assets*

Short term deposits include cash held on deposit either with the CBF Church of England Funds or at the bank.

**2. DONATIONS AND LEGACIES**

	Unrestricted Funds £	Restricted Funds £	2022 Total £	2021 Total £
Planned giving	11,572	2,526	14,098	16,095
Plate offerings	922		922	836
Other gifts	6,202	5,440	11,642	8,135
Gift aid	3,998	1,880	5,878	5,178
Listed Place of Worship Grant Scheme		2,354	2,354	32,261
National Heritage NLHF Grant		24,101	24,101	137,334
	<u>22,694</u>	<u>36,301</u>	<u>58,995</u>	<u>199,839</u>

**3. INCOME FROM CHARITABLE ACTIVITIES**

	Unrestricted Funds £	Restricted Funds £	2022 Total £	2021 Total £
Fees	1,642		1,642	1,265
Fund raising		624	624	958
	<u>1,642</u>	<u>624</u>	<u>2,266</u>	<u>2,223</u>

**4. CHARITABLE EXPENDITURE**

	Unrestricted Funds £	Restricted Funds £	2022 Total £	2021 Total £
Payments to Coventry Diocese	9,720		9,720	9,455
Clergy and Worship expenses	1,696	7	1,703	2,323
Insurance, security and utilities	7,253		7,253	5,227
Building repairs and maintenance	4,809	37,951	42,760	205,760
Heritage activities		9,636	9,636	9,158
Donations (Note 5)	1,423	200	1,623	1,262
	<u>24,901</u>	<u>47,794</u>	<u>72,695</u>	<u>233,185</u>

**THE PAROCHIAL CHURCH COUNCIL OF THE ECCLESIASTICAL PARISH OF  
ALL SAINTS, LADBROKE  
YEAR ENDED 31 DECEMBER 2022**

**NOTES TO THE ACCOUNTS**

5. DONATIONS	Unrestricted Funds	Restricted Funds	2022 Total	2021 Total
Coventry Bell Ringers Guild			-	100
Children's Society	100		100	-
Crisis			-	100
Galanos House (Royal British Legion)	200		200	150
Pakistan floods Appeal	100		100	-
Salvation Army	100		100	-
Southam foodbank	325		325	200
Southam St James Academy (Year 6 Bibles)	398		398	427
Teams 4U			-	100
The Well			-	100
Ukrainian Appeal and support	200	200	400	-
Other			-	85
	<u>1,423</u>	<u>200</u>	<u>1,623</u>	<u>1,262</u>

**6. GOVERNANCE COSTS**

None of the trustees received any remuneration or expenses during the year.

**7. INVESTMENTS**

	2022 £	2021 £
Unlisted investment	<u>3,778</u>	<u>4,280</u>

The unlisted investment consists of 183 units held in the CBF Church of England Investment Fund and is managed by CCLA Investment Managers Ltd. The investment is held in the Sabin Smith Endowment Fund.

**8. DEBTORS**

	2022 £	2021 £
Grants receivable	-	18,199
Income tax receivable	5,850	5,175
Prepayments	1,170	1,104
	<u>7,020</u>	<u>24,478</u>

**9. CREDITORS (Amounts falling due in less than one year)**

	2022 £	2021 £
Trade Creditors	<u>2,590</u>	<u>3,197</u>

**THE PAROCHIAL CHURCH COUNCIL OF THE ECCLESIASTICAL PARISH OF  
ALL SAINTS, LADBROKE  
YEAR ENDED 31 DECEMBER 2022**

**NOTES TO THE ACCOUNTS**

10. SUMMARY OF FUND MOVEMENTS

	Balance at 1 Jan 2022 £	Incoming resources £	Resources expended £	Gain/(loss) on investments £	Balance at 31 Dec 2022 £
<b>Endowment Fund</b>					
Sabin Smith	4,280			(502)	3,778
<b>Restricted Funds</b>					
All Saints for All Generations	84,472	30,134	(47,373)		67,233
Churchyard	-	214	(214)		-
Organ Fund	-	6,250			6,250
Ukrainian support fund	-	440	(207)		233
	<u>84,472</u>	<u>37,038</u>	<u>(47,794)</u>	<u>0</u>	<u>73,716</u>
<b>Unrestricted funds</b>					
Bell tower	3,423	255	(265)		3,413
Choir fund	-	500	(65)		435
General Fund	39,456	23,582	(24,571)		38,467
	<u>42,879</u>	<u>24,337</u>	<u>(24,901)</u>	<u>0</u>	<u>42,315</u>
<b>Total Funds</b>	<u>131,631</u>	<u>61,375</u>	<u>(72,695)</u>	<u>(502)</u>	<u>119,809</u>

11. PRIOR YEAR COMPARATIVE STATEMENT OF FINANCIAL ACTIVITIES

	Unrestricted Funds £	Restricted Funds	Endowment Fund	2021 Total £	2020 Total £
<b>Income from:</b>					
Donations and legacies	19,706	180,133		199,839	191,936
Charitable activities	1,305	918		2,223	1,180
Investments		109		109	934
<b>Total</b>	<u>21,011</u>	<u>181,160</u>	<u>-</u>	<u>202,171</u>	<u>194,050</u>
<b>Expenditure on:</b>					
Raising funds				-	-
Charitable activities	22,016	211,169		233,185	208,469
<b>Total</b>	<u>22,016</u>	<u>211,169</u>	<u>-</u>	<u>233,185</u>	<u>208,469</u>
Gain on investments			538	538	242
Net income/(expenditure)	<u>(1,005)</u>	<u>(30,009)</u>	<u>538</u>	<u>(30,476)</u>	<u>(14,177)</u>
<b>Reconciliation of Funds</b>					
Total funds brought forward	43,884	114,481	3,742	162,107	176,284
Total funds carried forward	<u>42,879</u>	<u>84,472</u>	<u>4,280</u>	<u>131,631</u>	<u>162,107</u>

**THE PAROCHIAL CHURCH COUNCIL OF THE  
ECCLESIASTICAL PARISH OF**

**ALL SAINTS, LADBROKE**

(Registered Charity No. 1195982)

**ACCOUNTS**

**FOR THE YEAR ENDED**

**31 DECEMBER 2022**

CONTENTS

	page
Statement of Financial Activities	2
Independent Examiner's Report	2
Balance Sheet	3
Notes to the Accounts	4 - 7

**THE PAROCHIAL CHURCH COUNCIL OF THE ECCLESIASTICAL PARISH OF  
ALL SAINTS, LADBROKE  
YEAR ENDED 31 DECEMBER 2022**

**STATEMENT OF FINANCIAL ACTIVITIES**

	Note	Unrestricted Funds £	Restricted Funds	Endowment Fund	2022 Total £	2021 Total £
<b>Income from:</b>						
Donations and legacies	2	22,694	36,301		58,995	199,839
Charitable activities	3	1,642	624		2,266	2,223
Investments		1	113		114	109
<b>Total</b>		<u>24,337</u>	<u>37,038</u>	<u>-</u>	<u>61,375</u>	<u>202,171</u>
<b>Expenditure on:</b>						
Charitable activities	4	24,901	47,794		72,695	233,185
<b>Total</b>		<u>24,901</u>	<u>47,794</u>	<u>-</u>	<u>72,695</u>	<u>233,185</u>
(Loss)/Gain on investments				(502)	(502)	538
<b>Net income/(expenditure)</b>		<b>(564)</b>	<b>(10,756)</b>	<b>(502)</b>	<b>(11,822)</b>	(30,476)
<b>Reconciliation of Funds</b>						
Total funds brought forward		42,879	84,472	4,280	131,631	162,107
Total funds carried forward	10	<u>42,315</u>	<u>73,716</u>	<u>3,778</u>	<u>119,809</u>	<u>131,631</u>

*The notes on pages 4 to 7 form part of these Accounts*

**Report of the Independent Examiner**

I have examined these Accounts, Balance Sheet and Notes thereon in conjunction with the books, papers and other information produced. In my opinion the accounts as presented correctly reflect the transactions of All Saints Church Ladbroke during the year ended 31st December 2022 and the Balance Sheet shows the position as at that date.

Signed:

Date:

**THE PAROCHIAL CHURCH COUNCIL OF THE ECCLESIASTICAL PARISH OF  
ALL SAINTS, LADBROKE  
YEAR ENDED 31 DECEMBER 2022**

**BALANCE SHEET**

	Note	2022 £	2021 £
<b>Fixed assets:</b>			
Investments	7	3,778	4,280
<b>Current assets:</b>			
Debtors	8	7,020	24,478
Cash at bank and in hand		<u>111,601</u>	<u>106,070</u>
		118,621	130,548
<b>Liabilities:</b>			
Creditors: amounts falling due in less than one year	9	(2,590)	(3,197)
<b>Net current assets</b>		<u>116,031</u>	<u>127,351</u>
<b>Net Assets</b>		<u>119,809</u>	<u>131,631</u>
<b>Funds of the charity:</b>			
Endowment fund		3,778	4,280
Restricted funds		73,716	84,472
Unrestricted funds		42,315	42,879
<b>Total charity funds</b>	10	<u>119,809</u>	<u>131,631</u>

Approved by the PCC on 23 February 2023  
and signed on their behalf by:

Revd. A G Batchelor  
Priest in Charge

*The notes on pages 4 to 7 form part of these Accounts*

**THE PAROCHIAL CHURCH COUNCIL OF THE ECCLESIASTICAL PARISH OF  
ALL SAINTS, LADBROKE  
YEAR ENDED 31 DECEMBER 2022**

**NOTES TO THE ACCOUNTS**

**1. ACCOUNTING POLICIES**

**(a) Basis of preparation**

The accounts have been prepared on the historic cost basis of accounting and in accordance with the Church Accounting Regulations 1997 together with applicable accounting standards and the Charities SORP (FRS 102).

The accounts include all transactions, assets and liabilities for which the PCC is responsible in law. They do not include the accounts of church groups that owe their main affiliation to another body nor those that are informal gatherings of Church members.

**(b) Funds**

*Endowment Fund*

The Sabin-Smith Endowment Fund derives from a legacy from the estate of Alfred Edward Sabin-Smith who left a duty to the Coventry Diocesan Trustees (Registered) to invest the legacy and to pay the net annual income arising therefrom to the PCC, for the upkeep of the Churchyard with a request to keep the family graves in good order. Income from the legacy is applied to the Churchyard restricted fund.

*Restricted Funds*

The charity operates the following restricted funds:

- (i) Donations received for the upkeep of the Churchyard are credited to the Churchyard Fund. Any relevant expenditure in excess of available restricted income is charged to the General Fund.
- (ii) The All Saints For All Generations Fund was established as an Appeal Fund to finance the repairs necessary to our Grade I listed building. Donations and grants received for the upkeep of the building are credited to the fund. Building repairs and heritage activities carried out as a condition of grants received are charged to it.
- (iii) The Organ Fund represents donations received specifically for the maintenance of the church organ and expenditure applied for this purpose.
- (iv) The Ukrainian support fund receives donations from church members and the local community in order to provide assistance to those displaced by the war in Ukraine, particularly those who have come to the local area.

Any grants or donations received for a specific purpose are treated as restricted funds. Any funds designated for a specific purpose by the PCC are treated as unrestricted. These include the Bell Tower Fund and the Choir Fund.

The General Fund represents the funds of the PCC that are not subject to any restrictions regarding their use and are available for application on the general purposes of the PCC.

**(c) Incoming resources**

*Voluntary income and capital sources*

Collections are recognised when received by or on behalf of the PCC.

Planned giving receivable under covenant is recognised only when received.

Income tax recoverable on covenants or gift aid donations is recognised when the income is recognised.

Grants and legacies to the PCC are accounted for as soon as the PCC is notified of its legal entitlement and the amount due.

Funds raised by events and activities are accounted for gross.

*Income from investments*

Interest is accounted for when receivable. Any tax recoverable on such income is recognised in the same accounting year.

**(d) Resources used**

*Activities directly relating to the work of the Church*

The Parish Share is accounted for when payable. Any portion unpaid at the year end is provided for in these accounts in recognition of an operational (but not a legal) liability.

**THE PAROCHIAL CHURCH COUNCIL OF THE ECCLESIASTICAL PARISH OF  
ALL SAINTS, LADBROKE  
YEAR ENDED 31 DECEMBER 2022**

**NOTES TO THE ACCOUNTS**

**(e) Fixed assets**

*Consecrated land and buildings and movable church furnishings*

Consecrated and beneficed property is excluded from the accounts by s.10(2)(a) of the Charities Act 2011.

*Fixed asset investments*

Investments are included in the balance sheet at fair value and the gain or loss taken to the Statement of Financial Activities.

*Other fixtures, fittings and office equipment*

No value is placed on movable church furnishings held by the churchwardens on special trust for the PCC and which require a faculty for disposal since the PCC considers this to be inalienable property. Any expenditure incurred during the year on consecrated or benefice buildings and movable church furnishings, whether maintenance or improvement, is written off as expenditure in the SOFA and separately disclosed.

*Current assets*

Short term deposits include cash held on deposit either with the CBF Church of England Funds or at the bank.

**2. DONATIONS AND LEGACIES**

	Unrestricted Funds £	Restricted Funds £	2022 Total £	2021 Total £
Planned giving	11,572	2,526	14,098	16,095
Plate offerings	922		922	836
Other gifts	6,202	5,440	11,642	8,135
Gift aid	3,998	1,880	5,878	5,178
Listed Place of Worship Grant Scheme		2,354	2,354	32,261
National Heritage NLHF Grant		24,101	24,101	137,334
	<u>22,694</u>	<u>36,301</u>	<u>58,995</u>	<u>199,839</u>

**3. INCOME FROM CHARITABLE ACTIVITIES**

	Unrestricted Funds £	Restricted Funds £	2022 Total £	2021 Total £
Fees	1,642		1,642	1,265
Fund raising		624	624	958
	<u>1,642</u>	<u>624</u>	<u>2,266</u>	<u>2,223</u>

**4. CHARITABLE EXPENDITURE**

	Unrestricted Funds £	Restricted Funds £	2022 Total £	2021 Total £
Payments to Coventry Diocese	9,720		9,720	9,455
Clergy and Worship expenses	1,696	7	1,703	2,323
Insurance, security and utilities	7,253		7,253	5,227
Building repairs and maintenance	4,809	37,951	42,760	205,760
Heritage activities		9,636	9,636	9,158
Donations (Note 5)	1,423	200	1,623	1,262
	<u>24,901</u>	<u>47,794</u>	<u>72,695</u>	<u>233,185</u>



**THE PAROCHIAL CHURCH COUNCIL OF THE ECCLESIASTICAL PARISH OF  
ALL SAINTS, LADBROKE  
YEAR ENDED 31 DECEMBER 2022**

**NOTES TO THE ACCOUNTS**

5. DONATIONS	Unrestricted Funds	Restricted Funds	2022 Total	2021 Total
Coventry Bell Ringers Guild			-	100
Children's Society	100		100	-
Crisis			-	100
Galanos House (Royal British Legion)	200		200	150
Pakistan floods Appeal	100		100	-
Salvation Army	100		100	-
Southam foodbank	325		325	200
Southam St James Academy (Year 6 Bibles)	398		398	427
Teams 4U			-	100
The Well			-	100
Ukrainian Appeal and support	200	200	400	-
Other			-	85
	<u>1,423</u>	<u>200</u>	<u>1,623</u>	<u>1,262</u>

6. GOVERNANCE COSTS

None of the trustees received any remuneration or expenses during the year.

7. INVESTMENTS

	2022 £	2021 £
Unlisted investment	<u>3,778</u>	<u>4,280</u>

The unlisted investment consists of 183 units held in the CBF Church of England Investment Fund and is managed by CCLA Investment Managers Ltd. The investment is held in the Sabin Smith Endowment Fund.

8. DEBTORS

	2022 £	2021 £
Grants receivable	-	18,199
Income tax receivable	5,850	5,175
Prepayments	1,170	1,104
	<u>7,020</u>	<u>24,478</u>

9. CREDITORS (Amounts falling due in less than one year)

	2022 £	2021 £
Trade Creditors	<u>2,590</u>	<u>3,197</u>

**THE PAROCHIAL CHURCH COUNCIL OF THE ECCLESIASTICAL PARISH OF  
ALL SAINTS, LADBROKE  
YEAR ENDED 31 DECEMBER 2022**

**NOTES TO THE ACCOUNTS**

**10. SUMMARY OF FUND MOVEMENTS**

	Balance at 1 Jan 2022 £	Incoming resources £	Resources expended £	Gain/(loss) on investments £	Balance at 31 Dec 2022 £
<b>Endowment Fund</b>					
Sabin Smith	4,280			(502)	3,778
<b>Restricted Funds</b>					
All Saints for All Generations	84,472	30,134	(47,373)		67,233
Churchyard	-	214	(214)		-
Organ Fund	-	6,250			6,250
Ukrainian support fund	-	440	(207)		233
	<u>84,472</u>	<u>37,038</u>	<u>(47,794)</u>	<u>0</u>	<u>73,716</u>
<b>Unrestricted funds</b>					
Bell tower	3,423	255	(265)		3,413
Choir fund	-	500	(65)		435
General Fund	39,456	23,582	(24,571)		38,467
	<u>42,879</u>	<u>24,337</u>	<u>(24,901)</u>	<u>0</u>	<u>42,315</u>
<b>Total Funds</b>	<u>131,631</u>	<u>61,375</u>	<u>(72,695)</u>	<u>(502)</u>	<u>119,809</u>

**11. PRIOR YEAR COMPARATIVE STATEMENT OF FINANCIAL ACTIVITIES**

	Unrestricted Funds £	Restricted Funds	Endowment Fund	2021 Total £	2020 Total £
<b>Income from:</b>					
Donations and legacies	19,706	180,133		199,839	191,936
Charitable activities	1,305	918		2,223	1,180
Investments		109		109	934
<b>Total</b>	<u>21,011</u>	<u>181,160</u>	<u>-</u>	<u>202,171</u>	<u>194,050</u>
<b>Expenditure on:</b>					
Raising funds				-	-
Charitable activities	22,016	211,169		233,185	208,469
<b>Total</b>	<u>22,016</u>	<u>211,169</u>	<u>-</u>	<u>233,185</u>	<u>208,469</u>
Gain on investments			538	538	242
Net income/(expenditure)	<u>(1,005)</u>	<u>(30,009)</u>	<u>538</u>	<u>(30,476)</u>	<u>(14,177)</u>
<b>Reconciliation of Funds</b>					
Total funds brought forward	43,884	114,481	3,742	162,107	176,284
Total funds carried forward	<u>42,879</u>	<u>84,472</u>	<u>4,280</u>	<u>131,631</u>	<u>162,107</u>