

Registered Charity Number: 1195650

MORE EDUCATION

**TRUSTEE'S REPORT AND
FINANCIAL STATEMENTS**

FOR THE PERIOD ENDED 31 AUGUST 2022

Table of Contents

More Education	3
Charity Reference and Administrative Details	3
Trustees' Report for the period ended 31 August 2022	4
Objectives	4
Vision	5
Purpose.....	6
Structure, Governance and Management.....	6
Operational Overview.....	7
Financial Review	8
Grants, Fundraising and Sustainability	8
Reserves	9
Activities, Achievements and Reflections.....	10
Reflections	13
Future Vision	14
Independent Examiner's Report to the Trustees of More Education	15
Receipts and Payments Accounts for the period ended 31 August 2022.....	16
Statement of Assets and Liabilities as at 31 August 2022	17
Notes (forming part of the financial statements) for the period ended 31 August 2022	18

More Education

Trustees' Report for the year ended 31 August 2022

Charity Reference and Administrative Details

Trustees	Mark Rist	
	Victoria Lavery	
	Rebecca Belbin	
	Christopher Rist	Appointed 29 th November 2021
	Carly Considine	Appointed 9 th March 2022
	Kelly Wilkie	Appointed 27 th June 2022
	Victoria Rist	
	Kate Griffin	Appointed 10 th March 2022
	Alexandra Walker	Resigned 1 st December 2021
	Felicity Knight	Resigned 15 th May 2022
	Andrew Witcher	Resigned 1 st April 2022
Charity Secretary	Rebecca Belbin	
Charity Treasurer	Victoria Lavery	
Charity Chairperson	Charlie Portlock	
Registered Charity No.	1195650	
Principal Office	23 Springfield Close Andover Hampshire SP10 2QR	
Independent Examiner	Miss S - Accounting for Purpose CIC 68 Privett Rd Fareham Hampshire PO15 6SP	
Bank	CAF Bank 25 Kings Hill Avenue Kings Hill West Malling Kent ME19 4JQ	

Trustees' Report for the period ended 31 August 2022

The Trustees present their report and the independently examined accounts for the period ended 31 August 2022.

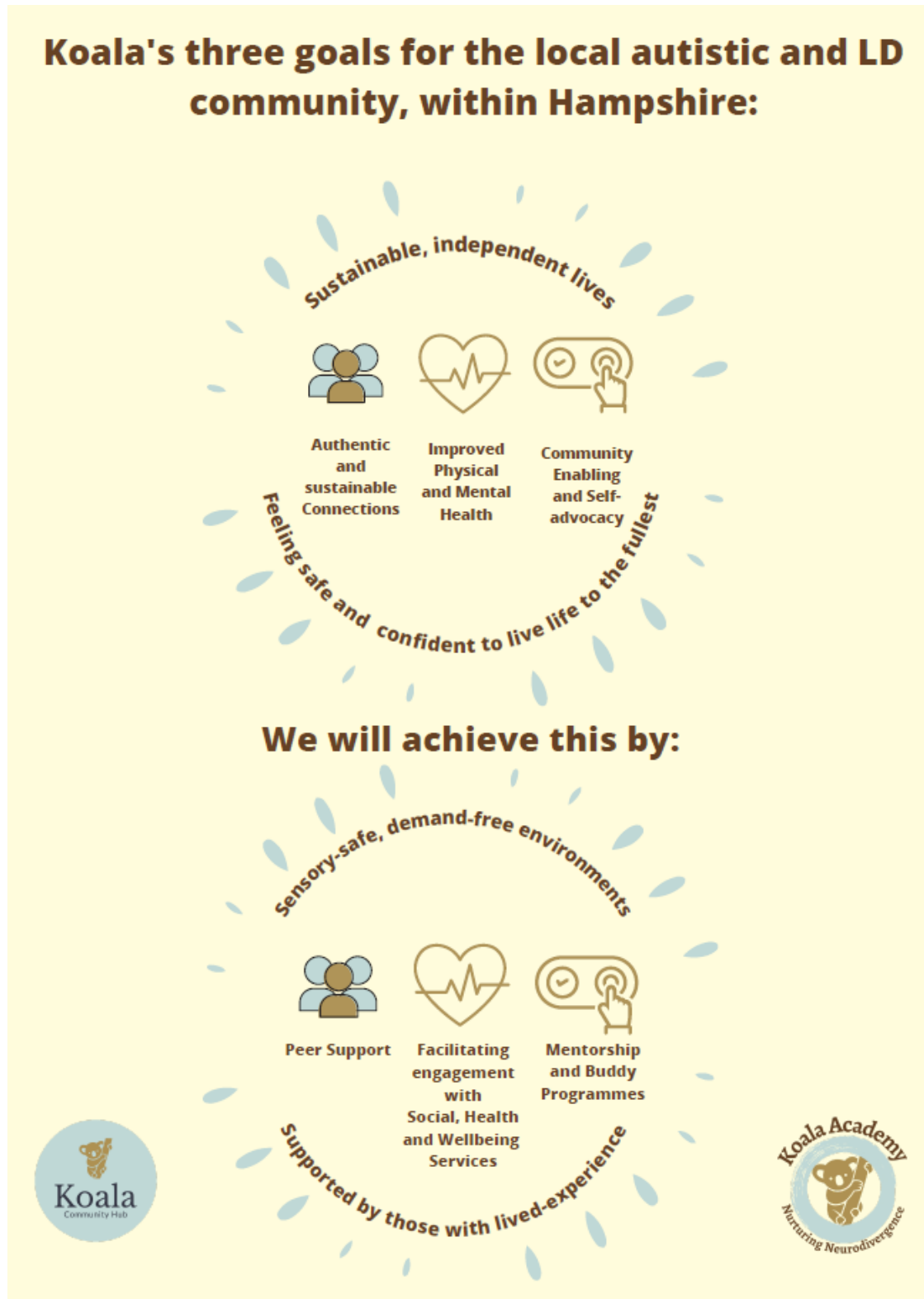
Objectives

The charity exists to meet the following objectives:

- 1. To advance the education of children and young people aged between 5 and 16, in particular those who are neurodivergent, but also physically disabled children, through the provision of a special school or schools.*
- 2. To relieve the needs of neurodivergent individuals, their families and carers, in such ways as the trustees may from time to time decide.*

Vision

We aim for an inclusive society where neurodivergent young people, adults and their families are able to live safe, sustainable and independent lives.



Purpose

To support and advocate for all neurodivergent people across Hampshire and the Isle of Wight by providing safe spaces (whether in person or online) and educational opportunities. Also to provide awareness, and promote acceptance as a trusted, authentic and professional neurodivergent-led charity.

We have achieved this by providing support to neurodivergent families and adults, through peer support groups via the Koala Hub (a community hub for our beneficiary groups).

These groups ranged from Toddler groups to Teen groups, adult groups and parent support groups (both online and in person).

Structure, Governance and Management

Andover Neurodiverse Adults Group began in August 2019 as a small adult peer support group. During the pandemic it was quickly realised that the lack of in-person support, available for neurodivergent people and their families, was a real barrier to safe and independent living. The Charity was then incorporated on 27th August 2021 as More Education. The Trading Name 'Koala Community Hub' and 'Koala Academy' are used to provide services under the Charity name More Education.

All Trustees of More Education are volunteers and recruited following an open application process. Trustees hold office until the conclusion of the meeting of Trustees in the calendar year of the third anniversary of their appointment by may be re-appointed at that meeting of Trustees.

The charity is guided by the charity's constitutional document.

The Trustees are pleased to report that the current Trustee Board comprises a broad spectrum of relevant experience and professional skills to govern the charity effectively; this was further reinforced by the appointment of four new Trustees in the reporting period. Following the resignation of Trustees Alex Walker, Felicity Knight and Andrew Witcher, the trustees would also like to take the opportunity to thank them for their service and wish them every success for the future.

The Trustees maintain a formal risk review process whereby risks to the charity's activities are captured, assessed, assigned an owner, and what action is to be taken towards mitigating these risks. This 'Risk Register' is reviewed at each meeting of the Trustee Board and a full internal risk assessment is incorporated into the annual planning process. At all times the Trustees give due regard to the Charity Commission guidance CC26, 'Charities and risk management'.

The More Education Trustee Board meets quarterly; in the reporting period the Trustee Board met four times. Every meeting of the Trustee Board considers reports on the operation of More Education services and fundraising activities, management accounts, safeguarding, risks to ongoing service delivery, and specific items for decision. Between the quarterly meetings, the operational team and trustees met regularly.

Operational management, including the management of fundraising and employment of volunteers is Managed by Tori Rist, Head of Operations. Trustees, at all times, retain oversight and make decisions affecting the delivery of the charity's objectives.

Our work would not be possible without the support of our core volunteer team – a reliable group of 10 people (mostly neurodivergent themselves) who want to support and grow what we offer to the community. Our volunteers totalled 336 volunteer hours in our first year of operations. We are also proud of our 90% volunteer retention rate. For the first 10 months of operations, our peer support groups were entirely managed by volunteers.

Pivotal to Koala's activities is providing a safe and secure environment at all of our Groups and other activities for young people. Safeguarding is a top priority for all Trustees, staff, and volunteers. More Education policies include Safeguarding and this is also integrated into role descriptions. Training is given yearly to all Trustees, Volunteers and Staff and is bespoke to More Education and Koala's activities. At all times the Trustees seek to follow the Charity Commission 'How to' guide, 'Safeguarding children and young people'. The Trustees also ensure that the charity is always guided by the Department of Education's 'Keeping children safe in education 2022 Statutory guidance for schools and colleges, 1 September 2022'. Specific measures to ensure effective safeguarding of young people and vulnerable adults are as follows:

- All activities are undertaken by at least two adults, including paid staff, and trained volunteers in safe locations.
- All staff and volunteers working in direct contact with young people (and vulnerable adults) are fully and regularly trained in safeguarding; all Trustees attend a safeguarding awareness course which is regularly reviewed.
- All Trustees, staff, and volunteers are subject to annual Enhanced Disclosure & Barring Service checks to ensure their eligibility for their role.
- Safeguarding is integrated into the regular reporting to the Trustees and is a standing agenda item at every meeting of the Trustee Board.

Operational Overview

More Education trades through the names Koala Community Hub and Koala Academy. Koala Community Hub is the community-focused provision.

Alongside our developing education offering 'Koala Academy', the charity is focused on improving autistic and neurodivergent people's lives - through education, training and community enablement.

This is achieved through offering a sensory-safe, trauma-informed and demand free physical space where our community can interact with their peers and other professionals. We are also currently expanding our on-line provision to include peer groups, parent groups and a gaming server.

Koala Community Hub currently offers both in-person and on-line peer support groups for all ages, parents and carers where a diagnosis is not necessary to access our services.

We can confirm that all projects have followed the guidance issued by the Charity Commission regarding public benefit.

Koala would have not been successful without the dedication, enthusiasm and support of the volunteer team.

Ranging from 14 to adults, we have been very lucky to have had volunteers join us from all areas of our community – the majority of whom are also neurodivergent. The Trustees would like to formally thank each volunteer for their hard work and dedication to the charity.

Financial Review

Like all charities operating at the end of the pandemic, fundraising and grant receiving have been difficult areas to navigate.

However, the support that we have been shown by grant giving organisations, fundraisers, and working hard to develop the 'Koala' name has been pivotal to being able to continue our work.

For example, we achieved a surplus of £18,236 in this first period as we concentrated hard on fundraising, grant writing and promoting the work that Koala does. As a result of this we received a substantial grant of £20,000 from Hampshire and IOW NHS CCG to sustain our young person groups. Our costs were high because it was a year of setting up processes, procedures and indeed our physical Community Hub, all of which involved resources and equipment. The surplus also shows due to our NHS grants running from April to April – thus our 2022/23 funding was still live at the time of year end.

Grants, Fundraising and Sustainability

The Trustees would like to thank Sovereign Housing, Hampshire County Council, Hampshire and IOW NHS CCG, Persimmon Homes, the Greenham Trust, Hampshire and IOW Community Fund, Wave 105 FM, Simplyhealth and Test Valley Borough Council for their support and funding during our first year of operations.

The first year also saw two successful charitable events which raised £1200 for the general operational support of the community hub and £1300 towards the implementation of two sensory rooms for our community. Both of these fundraising activities were 50% more successful than we thought.

Koala's peer support groups are free to attend, yet donations are encouraged where possible. These donations are used to cover the core costs of running the groups – from room rent to resource costs. In this period, attendance donations were £838.00.

Support has also been received by individual fundraisers who have been passionate about ensuring that Koala remains open for the community. This included participation in the Great South Run by Julie Stratton and a collective 'Kilometers for Koala' winter walking challenge which saw a group of community members raising £1200 towards the ongoing running costs of the hub.

The Trustees aim is now to ensure that we have a robust strategy for continuing the support that Koala currently offers, as well as building the support that will be available through the charities Educational provision, Koala Academy.

Reserves

Whilst the board has not yet agreed a formal policy on reserves, it is anticipated that something akin to 3mths running costs as a minimum will be agreed upon in the coming financial year, especially as we begin to embark on the possibility of leasing our own site.

Activities, Achievements and Reflections

Koala commenced operations within a local community space, on a monthly basis, and has since moved to large community hub space so that our groups can happen more frequently. Whilst we embarked on the Koala Community Hub project with only 2 monthly groups, our reach has grown faster than could have been expected.

There is a lack of knowledgeable community support for neurodivergent individuals, and their families and we are proud of the impact that Koala is having on the local community. This is an issue that is noted to be UK wide and is putting an inordinate pressure on both CAMHs and the local CMHTS.

Research shows that our community is some of the most vulnerable in society – not only for accessing services, but are often more vulnerable to peer abuse, county lines and other practices targeting young people who often struggle to understand other's intentions. Education, employment and housing are other areas that are difficult for our community to navigate and we have so many requests for support and advice in these areas. We work with all ages of young people, from toddlers to Young Adults and ensure that they have a voice when we are considering changes to the service.

Our peer support groups are limited to 15 people for adults/teens and 10 for primary aged and younger children. This ensures that our space is sensory friendly. Koala has a 'demand free' focus which ensures that just making it into the building is celebrated – no one is forced to engage in particular activities.



We have a wide range of resources including books, board games, sensory equipment, art equipment and general toys. We have also been able to open our own gaming area towards the end of this period which has helped us to work towards bringing more young vulnerable male teens into the hub.

Upon opening, we offered 2 monthly groups. Over the first year of operations, we offered **22 adult peer support sessions, 17 for parents and 86 sessions for young people under 18.**

This equated to **498 parent/carers spaces being filled, 190 adults' spaces and 647 under 18 spaces.**

Our impact reporting is developing and for our next financial year, we will be able to report on the number of returning members as well as the impact our services have on people's mental health and general wellbeing, across all projects.

We now **offer approximately 21 groups to 260 people every month** and this has only been possible with the support we have received from community fundraisers, grant givers and donors – all of whom put their trust and belief into a small and unknown charity that opened amidst the Covid pandemic. Our peer support groups also include an online Parent and an online Adult group – this is key to ensuring that we can support those who cannot yet access our hub in person.

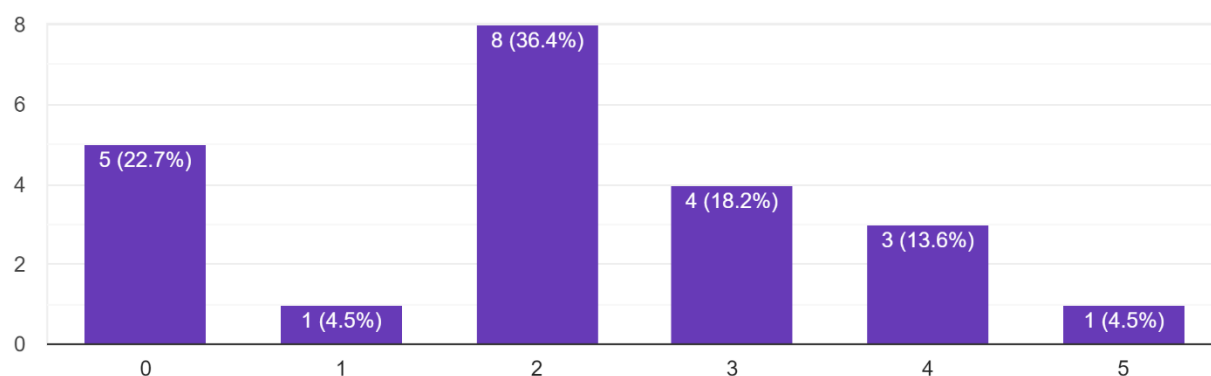
Work has commenced to scope the possibility of a young person and adult mentorship scheme and we continue to build strong relationships with other charities and organisations – ensuring that our community have access to all that is offered locally.

We have carried out various surveys over the past year and it appears that our community would strongly agree that the Koala Community Hub provides them with the connection and belonging that they have not been able to seek elsewhere. We also know that we are building on our community member's self-esteem and confidence when self-advocating for themselves.

Our impact on people's mental health has been phenomenal and something we are very proud of. The following data was collected from our first community survey, in summer 2022. The following two graphs asked people where they thought their mental health was before and after engaging with Koala (1 being poor mental health).

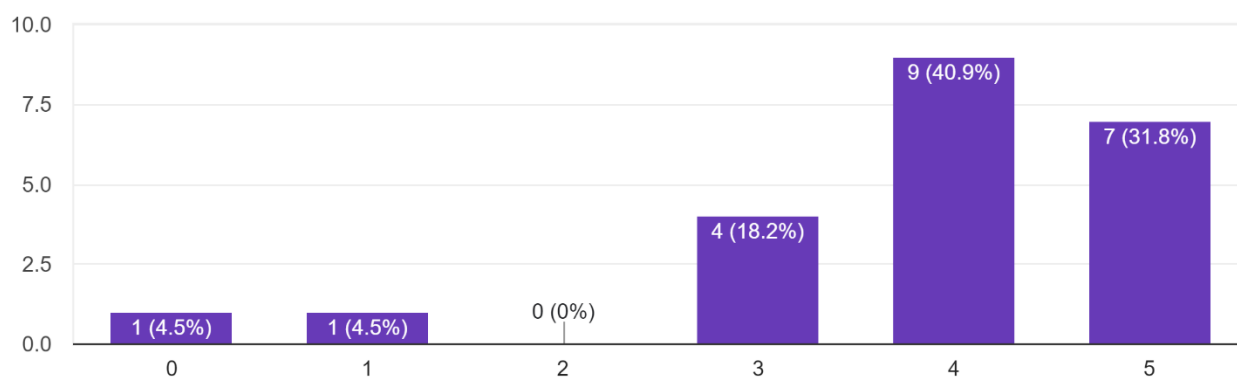
On a scale of 1 to 5, where would you say your mental health was before you engaged with Koala?

22 responses



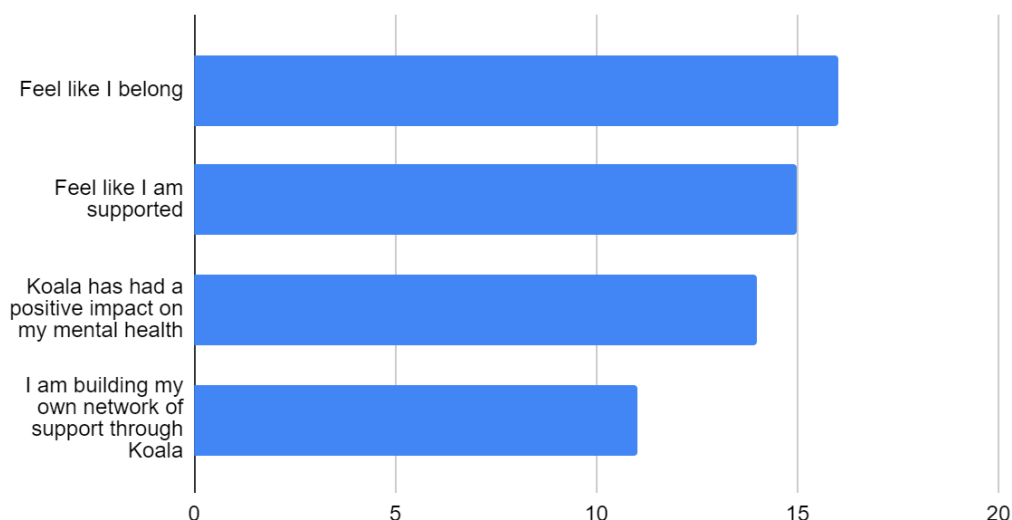
On a scale of 1 to 5, where would you say your mental health is now?

22 responses



We have also always been aware of the risk of isolation for our community and the need for belonging and feeling safe in an environment. This is an area that we believe we are combatting by creating a safe community for people to access (as shown in the feedback below):

Since becoming part of the Koala community, what benefits have you found?



Reflections

Koala Community Hub opened in an effort to combat the negative impacts and isolation that our community face on a daily basis. It was always supposed to be an 'add on' to the educational offer but has, in fact, become an important and life-changing support to many neurodivergent people and their families. For this reason the community hub will continue, as a project in its own right, alongside the development of the educational arm of the charity.

Due to the speed of growth of the hub, the next financial year will concentrate on careful sustainability planning and strategic work around fully ascertaining what projects are working best. This will include a full strategic review and we hope that we will begin to employ staff to work in various capacities across the charity.

Unfortunately, whilst not without due attention and dedication, the Koala Academy has not yet come to fruition. The Trustees are aware that this is a key part of the charity's strategy and it is important that this is reviewed and other opportunities are explored to create sustainability for the charity. This will be a core focus for the Trustees in the next period.

Future Vision

As we move into our second year of operations, it is important that the charity find ways to become financially sustainable.

Our focus will be to continue offering support through the hub's peer support groups but to also expand this support to include Adult and Young Person mentorship opportunities.

Koala Academy will also commence the opening of the 'Learning without Walls' provision which will offer distance learning and tutoring opportunities to young people who cannot access formal educational opportunities.

Outreach and training will also commence, ensuring that other sustainable funding opportunities are created and developed within the charity.

Reporting and evidence of impact is being streamlined so that we can effectively show the positive impact that we have on our community on a daily basis.

The search for an educational site continues and this will also bring much needed funding into the charity – some of which will be used to ensure that the links between the community and the education provision are continued for many generations to come.

Independent Examiner's Report to the Trustees of More Education

I report to the charity trustees on my examination of the accounts of the CIO for the period ended 31 August 2022.

Responsibilities and basis of report

As the charity's trustees of the CIO, you are responsible for the preparation of the accounts in accordance with the requirements of the Charities Act 2011 ("the Act").

It is my responsibility to:

- * examine the accounts under section 145 of the 2011 Act,
- * to follow the procedure laid down in the general Directions given by the Charity Commission under Section 145(5)(b) of the 2011 Act, and
- * to state whether particular matters have come to my attention

Basis of independent examiner's report

My examination was carried out in accordance with the general Directions given by the Charity Commission. An examination includes a review of the accounting records kept by the charity and a comparison of the accounts presented with those records. It also includes consideration of any unusual items or disclosures in the accounts and seeking explanations from you as trustees concerning any such matters. The procedures undertaken do not provide all the evidence that would be required in an audit and consequently, no opinion is given as to whether the accounts present a 'true and fair view' and the report is limited to those matters set out in the statement below.

Independent examiner's statement - matter of concern identified

I have completed my examination. I confirm that no material matters have come to my attention (other than those disclosed below) which give me cause to believe that in, any material respect:

- * accounting records were not kept in accordance with section 130 of the Act; or
- * the accounts do not accord with the accounting records.

In carrying out my examination I noted a lapse in the keeping of accounting records recording the restricted funds to which spend was associated. Income was clearly identified as Restricted or Unrestricted, but expenditure was not. You have confirmed that this was an oversight in your first year of running the CIO and that this has now been corrected for all transactions from 1 September 2022. Similarly, all internal financial controls have been reviewed and tightened as you have come to appreciate the relevance of them.

I confirm that there are no other matters to which your attention should be drawn to enable a proper understanding of the accounts to be reached.

Fiona Sanderson BA(Hons) ACMA CGMA MICB
Miss S - Accounting for Purpose CIC
68 Privett Road
Fareham
Hampshire, PO15 6SP

Signed:

Date:



29 June 2023

Receipts and Payments Accounts for the period ended 31 August 2022

	Notes	31 August 2022		Total Funds
		Unrestricted	Restricted	
Receipts:				
Donations	2	15,470		15,470
Grants	2	1,000	41,134	42,134
Fundraising Activities		2,575		2,575
Other		2		2
Total		19,047	41,134	60,181
Payments:				
Raising Funds	3	135		135
Charitable Activities	3			26,110
Administration and Support Costs	5			14,288
Total		135	-	40,533
Net Receipts/(Payments)				19,648
Cash Funds at 31 August 2022	4	-	-	18,236

Statement of Assets and Liabilities as at 31 August 2022

	Notes	30 June 2022		
		Unrestricted	Restricted	Total Funds
Cash Funds				
Cash at Bank and in Hand		-	-	18,236
Total		-	-	18,236
Assets retained for the charity's own use				
Office Equipment and Computers		-	-	1,412
Total		-	-	1,412
Liabilities				
Creditors: amounts due within 12 months	6	1,200	-	1,200
		1,200	-	1,200

The financial statements were approved by the Board of Trustees on 29th June 2023 and signed on their behalf by:



Charlie Portlock
Chair of Trustees

Notes (forming part of the financial statements) for the period ended 31 August 2022

1) Receipts and Payments Accounts

Receipts and payments accounts are statements that summarise the movement of cash into and out of the organisation during the financial year. In this context "cash" includes cash equivalents, for example, bank accounts where cash can be readily withdrawn to pay for debts as they become due.

2) Donations and Legacies

	31 August 2022		
	Unrestricted	Restricted	Total Funds
Receipts:			
Donations and Gifts	8,470		8,470
Anonymous Donor	7,000		7,000
Charitable Activities	2,575		2,575
Grants			-
TVBC		2,000	2,000
Sovereign Housing		1,000	1,000
Persimmon	1,000		1,000
Simply Health		5,000	5,000
Hampshire County Council		3,460	3,460
Bauer		4,674	4,674
NHS - H&IW		20,000	20,000
Hampshire & Isle of Wight Community Fund		5,000	5,000
	19,045	41,134	60,179

3) Direct Charitable Expenditure

	31 August 2022		
	Unrestricted	Restricted	Total Funds
Raising Funds			135
Charitable Activities			26,110
	-	-	26,245

4) Cash Funds

	31 August 2022		
	Unrestricted	Restricted	Total Funds
CAF Bank			15,524
Natwest Bank			2,712
	-	-	18,236

5) Charity Management and Administration

	31 August 2022		
	Unrestricted	Restricted	Total Funds
Governance Costs			-
Support Costs			13,255
Volunteer Costs			1,033
	-	-	14,288

6) Current Liabilities - Creditors

	31 August 2022		
	Unrestricted	Restricted	Total Funds
Accountant	750		750
Independent Examiner	450		450
			-
	450	-	450

7) Related Party Transactions and Trustees' Expenses and Remuneration

In the period, Trustee Victoria Rist received £13,000 for her time running support groups for the Koala Hub as per the dispensation granted from The Charity Commission.

All other Trustees give freely their time and expertise without any form of remuneration or other benefit in cash or kind.

Whilst there is no separate Trustee Indemnity Insurance purchased, Trustees are covered by the Employer Liabilities section of the charity insurance.