

MORE EDUCATION

England & Wales · Charity number 1195650

Details

Other names ANDOVER SMALL SCHOOL

Status Registered

Legal form CIO

Registered 2021-08-27

Register [View on the Charity Commission register](#)

Contact

Address More Education
83 High Street
Andover
Hampshire
SP10 1LR

Phone 01264 554432

Email hello@moreeducation.co.uk

Website www.moreeducation.co.uk

Activities

Objects: 1. TO ADVANCE THE EDUCATION OF CHILDREN AND YOUNG PEOPLE AGED BETWEEN 5 AND 16, IN PARTICULAR THOSE WHO ARE NEURODIVERGENT, BUT ALSO PHYSICALLY DISABLED CHILDREN, THROUGH THE PROVISION OF A SPECIAL SCHOOL OR SCHOOLS. 2. TO RELIEVE THE NEEDS OF NEURODIVERGENT INDIVIDUALS, THEIR FAMILIES AND CARERS, IN SUCH WAYS AS THE TRUSTEES MAY FROM TIME TO TIME DECIDE.

Activities: Providing education and support opportunities for autistic and neurodivergent people, and their families.

Classification

- **How:** Provides Buildings/facilities/open Space, Provides Services, Provides Advocacy/advice/information
- **What:** General Charitable Purposes, Education/training, Disability
- **Who:** Children/young People, People With Disabilities, Other Defined Groups

Geography

- Hampshire
- Surrey
- Wiltshire

Finances

Period end	Income	Expenditure	Assets	Employees
2024-08-31	£419,786	£331,071	-	-
2023-08-31	£155,343	£163,278	-	-
2022-08-31	£60,181	£40,533	-	-

Trustees

Name	Role	Appointed
Charlie Mackenzie Portlock	Chair	2023-06-14
James Court-Martin		2026-01-16
Pippa Johnson		2026-01-19
Sarah Mackaness		2024-06-06

MORE EDUCATION

England & Wales - Charity number 1195650

Accounts

Registered Charity Number: 1195650

MORE EDUCATION

TRUSTEE'S REPORT

AND

FINANCIAL STATEMENTS

FOR THE PERIOD ENDED 31 AUGUST 2024

Table of Contents

Charity Reference and Administrative Details.....	3
Trustees' Report for the period ended 31 August 2024.....	4
Independent Examiner's Report to the Trustees	11
Statement of Financial Activities.....	12
Statement of Financial Position	14
Notes to the Financial Statements	16

More Education

Trustees' Report for the year ended 31 August 2024

Charity Reference and Administrative Details

Trustees	Charlie Portlock Rebecca Belbin Christopher Rist Carly Considine Amy Hyde Rebecca Hall-Franke Lee Iveson Sarah Mackaness Melanie Phipps	Appointed 14 th June 2023 Appointed 6 th March 2020 Appointed 29 th November 2021 Appointed 9 th March 2022 Appointed 6 th June 2024 Appointed 14 th June 2023 Appointed 6 th June 2024 Appointed 6 th June 2024 Appointed 20 th April 2023
Charity Secretary	Rebecca Belbin	
Charity Treasurer	Amy Hyde (Interim)	
Charity Chairperson	Charlie Portlock	
Registered Charity No.	1195650	
Principal Office	83 High Street Andover Hampshire SP10 1LR	
Independent Examiner	Severn Accounting Shaw Mews 1 Shaw Street Worcester WR1 3QQ	
Bank	CAF Bank 25 Kings Hill Avenue Kings Hill West Malling Kent ME19 4JQ	

Trustees' Report for the period ended 31 August 2024

The Trustees present their report and the independently examined accounts for the period ended 31 August 2024.

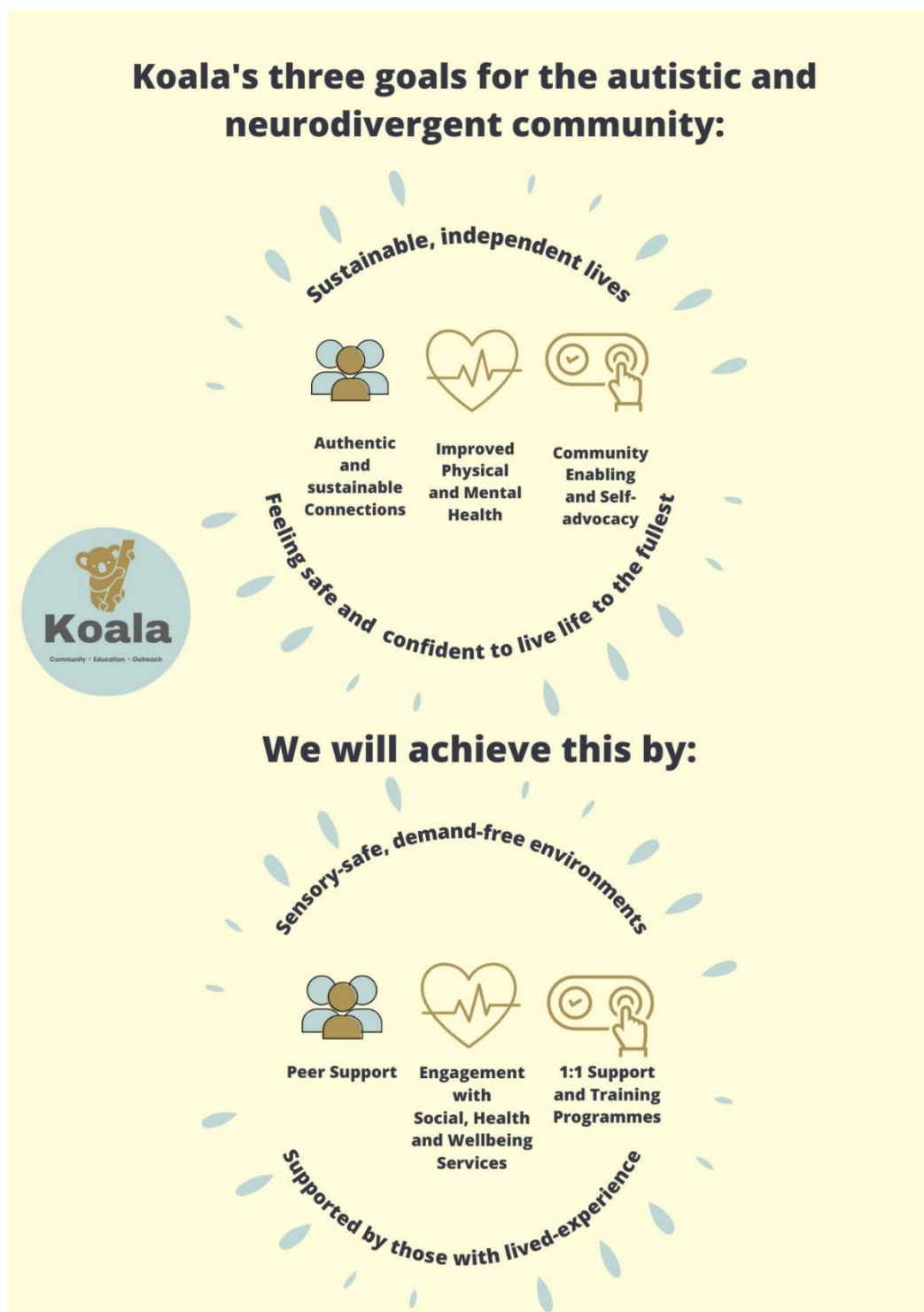
Objectives

The charity exists to meet the following objectives:

- 1. To advance the education of children and young people aged between 5 and 16, in particular those who are neurodivergent, but also physically disabled children, through the provision of a special school or schools.*
- 2. To relieve the needs of neurodivergent individuals, their families and carers, in such ways as the trustees may from time to time decide.*

Vision

We continue to aim for an inclusive society where neurodivergent young people, adults and their families are able to live safe, sustainable and independent lives. We will achieve this through offering training, education, outreach and community opportunities.



Purpose

To support and advocate for all neurodivergent people across Hampshire and the Isle of Wight by providing safe spaces (whether in person or online) and educational opportunities. Also to provide awareness, and promote acceptance as a trusted, authentic and professional neurodivergent-led charity.

We continue to provide support to neurodivergent families and adults, through peer support groups via the Koala Hub (a community hub for our beneficiary groups). Peer support groups ranged from Toddler groups to Teen groups to adult groups (both online and in person).

Our education provision now includes a growing alternative provision. This alternative provision provides part-time education to young people who cannot access a traditional education setting. This is achieved through 1:1 tutoring and our distance learning boxes.

Structure, Governance and Management

More Education continues to support autistic and otherwise neurodivergent young people and adults across Hampshire. This financial year has seen the education provision develop nationally and the community provision support young people and adults from Hampshire, Wiltshire and Berkshire.

All Trustees of More Education are volunteers and recruited following an open application process. Trustees hold office until the conclusion of the meeting of Trustees in the calendar year of the third anniversary of their appointment by may be re-appointed at that meeting of Trustees.

The charity is guided by the charity's constitutional document.

The Trustees continue to retain a diverse breadth of experience across the board as well as the inclusion of autistic individuals . Following the resignation of treasurer Victoria Laverty, the trustees would like to take the opportunity to thank Victoria for her service in the role and wish her every success for the future.

The Trustees maintain a formal risk review process whereby risks to the charity's activities are captured, assessed, assigned an owner, and what action is to be taken towards mitigating these risks. This 'Risk Register' is reviewed at each meeting of the Trustee Board and a full internal risk assessment is incorporated into the annual planning process. At all times the Trustees give due regard to the Charity Commission guidance CC26, 'Charities and risk management'.

The More Education Trustee Board meets quarterly; in the reporting period the Trustee Board met four times. Every meeting of the Trustee Board considers reports on the operation of More Education services and fundraising activities, management accounts, safeguarding, risks to ongoing service delivery, and specific items for decision. Between the quarterly meetings, the operational team and trustees met regularly.

Operational management, including the management of fundraising, employment and volunteers is Managed by Tori Rist, CEO. Trustees, at all times, retain oversight and make decisions affecting the delivery of the charity's objectives.

This year has seen the introduction of a Delegation of Authority framework and policy which has provided further clarity for operational staff and trustees alike.

Without the support of our operational volunteer team, we would not be able to continue our peer support work. Our dedicated and reliable team of 12 people (mostly neurodivergent themselves) continue to support our community work and among them we have teen volunteers. Volunteer hours has risen exponentially since the charity opened, from 336 hours in our first year of operations to nearly 2,000 hours during this period.

Safeguarding and Health and Safety continues to be a fundamental focus within the charity, even more so as we move towards the development of our first exclusive use community and education site.

Operational Overview

More Education now trades exclusively as Koala. Offering support for Community, Education and Outreach these provisions all sit within the Koala brand. This ensures that there is less confusion around the different elements of support that the charity offers.



Whilst the peer support groups continue to grow and develop, the demand for support remains high. More adults in crisis are accessing our services and we hope to expand on the recent mentorship project to provide more support groups and 1:1 opportunities for adults, in particular.

The demand for Koala's community support continues to grow. This period saw 4,214 spaces offered to the community over the course of the year. These spaces saw a 55% uptake, compared to 43% in the previous period. The Koala community filled 2,331 peer support session spaces, an increase from last year which saw 3,284 spaces offered and 1,622 spaces filled; a take up of 49%.

A focus for the next financial period will be to move into 83 High Street and provide our community with the sustainable and safe space that they have always needed.



The co-produced Self Advocacy project (in Partnership with the Hampshire and IOW NHS ICB) proved a great success, leading to Koala being awarded 'Best Co-Production' at the 2023 National Advocacy Awards in Birmingham. This led to the training being funded by the Hampshire and IOW ICB for a further year, leading to a further 20 adults receiving self-advocacy training.

It is hoped that funding for this training will continue, given that all attendees reported to finding the training a real support towards more independent living.

Koala's education offer grew from strength to strength during this period. At the end of the previous period, our education provision was supporting 5 young people through a mixture of 1:1 tutoring and our distance learning programme. This year has seen unprecedented growth with us now supporting 23 young people and expanding into North Yorkshire and Surrey with the distance learning provision.

This financial period also saw the charity embark on a project to find our own exclusive site. Having moved twice since opening, and the uncertainty it causes the community, the trustees felt that it was a good time to move towards opening a designated Koala site.

With support from Test Valley Borough Council, Koala have successfully negotiated the 5 year lease of 83 High Street, Andover and hope to move into the space in the next financial year. The site will give Koala's community the comfort of knowing that we will not need to move again for a considerable time and also allow the charity to expand it's education offering to include in person group learning.

The focus remains to sustain community support, continue to develop Koala's alternative education provision and work towards the opening of the full-time school.

Financial Review

This financial year has seen the growth of the staff team and the continued growth of the education provision. Whilst the education provision continues to be self-sustaining, accessing grants to sustain the community element of the charity has been extremely difficult. Many avenues of statutory grant funding have ceased this year giving real concern as to the sustainability of the community element of the charity.

Despite these difficulties, Children in Need confirmed 3 years of funding for half of our young person peer support groups, with the National Lottery supporting the additional young person groups for the coming year. Without this support, and the support of a private donor, we would not have been able to sustain the community element of the charity.

The staff team has grown from 3 full-time and 3 part-time to 4 full-time and 7 part-time staff. The staff members have been funded through grants, fees paid to the education project and the extremely generous donations of

an anonymous donor. Without these supporters we could not have moved the charity to the next phase of development and the trustees are extremely grateful for their support.

Grants, Fundraising and Sustainability

The Trustees would like to thank Co-op Community Fund, Children in Need, National Lottery, Hampshire County Council, Hampshire and IOW NHS ICB, Lloyds Bank, Burdock Valley Players and our private donor for their support and funding during our third year of operations.

Whilst the project is ongoing, nearly all of the funding has now been raised to mobilise 83 High Street and this has only been achieved due to the support of Test Valley Borough Council, Stannah, Andover Town Council, Co-Op Community Grants and County Councillor Phil North. Without the support of these organisations, we could not have raised the substantial amount needed to commence the fit out of the building.

This year also saw the charity embarking on our first 'Walk the Testway' 25 mile walk which also raised valuable funds for the fit-out of the new hub. This was a gruelling walk that both our Head of Education and Chair of Trustees completed.

Other fundraisers for this period included Julie Stratton, Charlie Thomas and Kate Underwood HR who all completed individual fundraising events to raise money for Koala – from boxing to marathons! The trustees are very grateful to all of those who have taken the time and effort to raise valuable funds for the charity.

Koala's peer support groups are free to attend, yet donations are encouraged where possible. These donations are used to cover the core costs of running the groups – from room rent to resource costs. In this period, attendance donations were approximately £1267. This is a fall in donations from £1650 in the previous period and shows the difficulties that many charities are facing with regards to fundraising.

The Trustees aim is now to ensure that we have a robust strategy for continuing the support that Koala currently offers, as well as building the support that will be available through the charities Educational provision.

Reserves

The building of reserves, to cover 3 months' operational costs, continues to be a core aim of the charity. Whilst it is extremely difficult to build reserves in the current charity landscape, this will continue to be a priority for the charity.

Activities, Achievements and Reflections

Koala's community offer has continued to grow and the 1:1 support that we can now also offer to our adults has proven invaluable.

The Adult Mentorship Pilot, funded by Hampshire County Council, has now supported 30 adults with both practical and mental health areas of their lives. It is hoped that Koala can now build upon this project and offer even more support for the adults within our community.

Being awarded 'Best Co-Production' at the 2023 National Advocacy Awards in Birmingham has been a highlight of this year and illustrates how fundamental community involvement is when the charity creates new projects. The self-advocacy training now continues within the community with both on-line and in-person options being offered.

The exponential growth of the education sector of Koala has been a particular highlight of the year. Supporting such a large number of young people, with varying needs, has been an area that the charity has excelled. A culmination of strong operational management, via the Head of Education, and a dedicated and specialist team of teachers, the trustees hope that this provision will continue to grow into the next year.

Reflections

The work of the charity continues to evolve and grow, yet the breadth of support has now stabilised. In the last financial report the Trustees and senior management team felt that it was important to focus on key areas of the charity's provision and this has proven to be a successful and worthwhile strategy.

The Trustees continue to develop the strategy, alongside staff, to ensure that the core values of collaboration and relationships remain at the core of the charity and continue to guide the journey of the charity.

The school continues to be the driving focus for the senior management team and Trustees and it is hoped that progress will be made in this area over the next year.

Future Vision

As we move into our fourth year of operations, it is important that the charity continue to find ways to become financially sustainable.

Our focus will be to continue offering support through the hub's peer support groups but to also continue to expand the education provision, all whilst ensuring that our staffing and financial structure ensures longevity and stability for both the charity and the community we serve.

Trustee: Amy Hyde



MORE EDUCATION

INDEPENDENT EXAMINER'S REPORT TO THE TRUSTEES OF MORE EDUCATION

for the year ended 31 August 2024

I report to the charity trustees on my examination of the accounts of the Charity for the year ended 31 August 2024.

Responsibilities and Basis of report

As the charity's trustees, you are responsible for the preparation of the accounts in accordance with the requirements of the Charities Act 2011 ("the Act").

I report in respect of my examination of the Charity's Accounts carried out under section 145 of the 2011 Act and in carrying out my examination, I have followed all the applicable Directions given by the Charity Commission under section 145(5)(b) of the Act.

Independent examiner's statement

I have completed my examination. I confirm that no material matters have come to my attention in connection with the examination which gives me cause to believe that in, any material respect:

- the accounting records were not kept in accordance with Section 130 of the Charities Act; or
- the accounts did not accord with the accounting records; or
- the accounts did not comply with the applicable requirements concerning the form and content of accounts set out in the Charities (Accounts and Reports) Regulations 2008 other than any requirement that the accounts give a 'true and fair' view which is not a matter considered as part of an independent examination.

I have no concerns and have come across no other matters in connection with the examination to which attention should be drawn in this report in order to enable a proper understanding of the accounts to be

Severn Accounting
Shaw Mews
1 Shaw Street
Worcester
WR1 3QQ



Date: 30.06.2025

MORE EDUCATION

STATEMENT OF FINANCIAL ACTIVITIES (including income and expenditure account) for the year ended 31 August 2024

		Unrestricted	Restricted	Total	Total
	Note	Funds	Funds	Funds	Funds
		£	£	2024	2023
		£	£	£	£
Income from:					
Donations and legacies	2	69,092	161,876	230,968	147,582
Charitable activities	2	188,450	-	188,450	7,651
Investment income	2	52	-	52	54
Other income	2	125	191	316	23
		-----	-----	-----	-----
Total income		257,719	162,067	419,786	155,310
		-----	-----	-----	-----
Expenditure on:					
Charitable activities	3	204,536	42,070	246,606	115,960
Governance costs	3	46,591	37,874	84,465	49,350
		-----	-----	-----	-----
Total resources expended		251,127	79,944	331,071	165,309
		-----	-----	-----	-----
Net incoming resources Before transfers		6,592	82,123	88,715	(9,999)
		-----	-----	-----	-----
Net incoming resources		6,592	82,123	88,715	(9,999)

MORE EDUCATION

**STATEMENT OF FINANCIAL ACTIVITIES (including income and expenditure account)
for the year ended 31 August 2024**

Reconciliation of funds	9 & 10				
Total funds brought forward		(22,252)	31,902	9,650	19,649
Funds introduced					
Movement in funds					
Total funds carried forward	10	(15,660)	114,024	98,364	9,650

MORE EDUCATION

STATEMENT OF FINANCIAL POSITION

As of 31 August 2024

	Note	Unrestricted Funds	Restricted Funds	2024 Total Funds	2023 Total funds
		£	£	£	£
Fixed assets					
Tangible assets	6	12,947	-	12,947	1,294
Current Assets					
Debtors	7	12,055	-	12,055	86
Cash at bank and in hand		116,420	-	116,420	10,428
		<u>128,475</u>	<u>-</u>	<u>128,475</u>	<u>10,514</u>
Creditors					
Amounts falling due within one year	8	(43,058)	-	(43,058)	(2,158)
Net current assets		<u>85,417</u>	<u>-</u>	<u>85,417</u>	<u>8,356</u>
Total Assets less Current Liabilities		<u>98,364</u>	<u>-</u>	<u>98,364</u>	<u>9,650</u>
Net Assets		<u>98,364</u>	<u>-</u>	<u>98,364</u>	<u>9,650</u>
Funds					
Unrestricted funds				(15,660)	(22,252)
Restricted funds				114,025	31,902
Total Funds	10			<u>98,364</u>	<u>9,650</u>

MORE EDUCATION

STATEMENT OF FINANCIAL POSITION As of 31 August 2024

The company was entitled to exemption from audit under s477 of the companies Act 2006 relating to small companies.

The members have not required the company to obtain an audit in accordance with section 476 of the Companies Act 2006.

The directors acknowledge their responsibilities for complying with the requirements of the Companies Act with respect to accounting records and the preparation of accounts.

These accounts have been prepared in accordance with the provisions applicable to small companies subject to the small companies regime and in accordance with FRS102 SORP.

Trustee: Amy Hyde

A handwritten signature in black ink, appearing to read 'A Hyde', written in a cursive style.

Date: 30.06.2025

MORE EDUCATION

NOTES TO THE FINANCIAL STATEMENTS for the year ended 31 August 2024

1. PRINCIPAL ACCOUNTING POLICIES

GENERAL INFORMATION

MORE EDUCATION is a Charitable Incorporated Organisation (CIO) incorporated in England and is registered with The Charity Commission under the Charities Act 2011 and it constitutes a Public Benefit Entity as defined by FRS102. The address of the registered office is given in the reference and administrative details on page 2.

BASIS OF ACCOUNTING

The financial statements have been prepared under the historical cost convention and in accordance with FRS 102 "The Financial Reporting Standard applicable in the UK and Republic of Ireland", Accounting and Reporting by Charities" the statement of Recommended Practice (SORP) for charities applying FRS 102.

The financial statements are prepared in sterling.

The significant accounting policies applied in the preparation of these financial statements are set out below. These policies have been consistently applied to all years presented unless otherwise stated.

CHANGE OF ACCOUNTING POLICY

During the year, the Charity changes its Accounting Policy from Receipts and Payments basis to Accruals basis. The change is essential to reflect the increased activities of the Charity and to provide a more reliable and relevant information. The change did not however, have a material impact in the financial statements as disclosed in the reconciliation in Note 2.

GOING CONCERN

At the time of approving the accounts, the trustees have reasonable expectation that the CIO has adequate resources to continue in operational existence for the foreseeable future. Thus, the trustees continue to adopt the going concern basis of accounting in preparing the accounts.

INCOMING RESOURCES

All incoming resources are included in the Statement of Financial Activities when the CIO is legally entitled to the income and the amount can be quantified with reasonable accuracy.

RESOURCES EXPENDED

Expenditure is accounted for on an accrual basis and has been classified under headings that aggregate all cost related to the category. Where costs cannot be directly attributed to particular headings, they have been allocated to activities on a basis consistent with the use of resources.

TAXATION

The CIO is exempt from corporation tax on its charitable activities.

MORE EDUCATION

NOTES TO THE FINANCIAL STATEMENTS for the year ended 31 August 2024 (continued)

ACCOUNTING POLICIES (continued)

TANGIBLE FIXED ASSETS AND DEPRECIATION

Depreciation of tangible fixed assets is provided at the following basis, commencing with the year of acquisition at rates estimated to write off their cost or valuation, less any residual value over the estimated useful lives which are as follows:

Computer equipment	-	Over 5 years
Office equipment	-	Over 10 years
Fixtures and fittings	-	Over 10 years
Plant and machinery	-	Over 20 years

TAXATION

The Charity is exempt from tax on its charitable activities.

FUND ACCOUNTING

Unrestricted funds can be used in accordance with the charitable objectives at the discretion of the trustees.

Restricted funds can only be used for restricted purposes within the objects of the CIO. Restrictions arise when specified by the donor or when funds raised for restricted purposes.

GOVERNMENT GRANTS

Government grants received for capital items are recognised in income over the useful life of the assets (excluding land) under the accruals model. Grants relating to revenue are recognised in income and expenditure over the same period as the expenditure to which they relate once reasonable assurance has been gained that the CIO will comply with the conditions and that the funds will be received.

MORE EDUCATION

NOTES TO THE FINANCIAL STATEMENTS for the year ended 31 August 2024 (continued)

DEBTORS AND CREDITORS RECEIVABLE/PAYABLE WITHIN ONE YEAR

Debtors and creditors with no stated interest rate and receivable or payable within one year are recorded at transaction price. Any losses arising from impairment are recognised in the statement of financial activities in other administrative expenses.

LEASES

Rentals payable and receivable under operating leases are charged to the statement of financial activities on a straight-line basis over the period of the lease.

MORE EDUCATION

NOTES TO THE FINANCIAL STATEMENTS for the year ended 31 August 2024 (continued)

2. INCOME

	Unrestricted Funds	Restricted Funds	2024 Total Funds	2023 Restated Total Funds
	£	£	£	£
Donations and Legacies:				
83 High Street R	-	10,000	10,000	-
Hub Adults Mentorship R	-	-	-	7,050
Hub Adults R	-	1,947	1,947	-
Education Distance UR	-	-	-	21
Hub Emergency Move R	-	563	563	-
Hub General UR	16,646	-	16,646	12,619
Hub Training UR	-	-	-	(17)
Hub Young Adults R	-	-	-	300
Hub Kids R	-	2,035	2,035	-
Hub Teens R	-	4,070	4,070	-
Hub Sensory R	-	-	-	2,200
More Education R	-	2,496	2,496	13,534
More Education UR	37,150	-	37,150	32,908
	53,797	21,111	74,907	68,615
Gift aid				
More Education UR	15,295.06	-	15,295.06	10,319.00
Grants received				
83 High Street R	-	84,564	84,564	-
Hub Adults Mentorship R	-	14,945	14,945	14,946
Hub Adults R	-	-	-	7,791
Hub Emergency Move R	-	750	750	-
Hub Family R	-	1,299	1,299	-
Hub Gaming Group R	-	-	-	889
Hub iWill R	-	250	250	9,752
Hub Kids R	-	-	-	10,516
Hub LGBTQ+ Teens R	-	1,299	1,299	1,524
Hub Self Advocacy Training R	-	4,676	4,676	8,040
Hub Sensory R	-	2,404	2,404	1,000
Hub Teens R	-	-	-	10,516
Hub Toddlers R	-	5,282	5,282	-
Hub Young Adults R	-	-	-	1,524
Hub YPNIS R	-	5,282	5,282	-
More Education R	-	996	996	2,150
Hub Kids R	-	9,509	9,509	-
Hub Teens R	-	9,509	9,509	-
		140,765	140,765	68,648
Total Donation and Legacies Income	69,092	161,876	230,967	147,582

MORE EDUCATION

NOTES TO THE FINANCIAL STATEMENTS for the year ended 31 August 2024 (continued)

Charitable Activities	Unrestricted Funds	Restricted Funds	2024 Total Funds	2023 Restated Total Funds
	£	£	£	£
Fees				
Education Distance UR	152,845	-	152,845	5,756
Education Tutoring UR	29,105	-	29,105	-
Consultancy	-	-	-	1,895
Unassigned	6,500	-	6,500	-
Total Charitable Income	188,450	-	188,450	7,651

Investment Income:	Unrestricted Funds	Restricted Funds	2024 Total Funds	2023 Restated Total Funds
	£	£	£	£
Interest Income – More Education UR	52	-	52	54

Other Income

More Education UR	-	-	-	23
Hub Gaming Group R	-	191	191	-
Hub General UR	125	-	125	-
	125	191	316	23
Total Income	257,718	162,067	419,786	155,310

MORE EDUCATION

NOTES TO THE FINANCIAL STATEMENTS for the year ended 31 August 2024 (continued)

2.1 RECONCILIATION WITH PREVIOUS GENERALLY ACCEPTED ACCOUNTING PRACTICE

Reconciliation of funds per Receipts and Payments basis to funds determined under Accrual Basis

	Start of Period £	End of Period £
Fund balances as previously stated	10,428	116,420
Adjustments:		
Fixed Assets	1,294	12,947
Other Debtors	86	12,055
Creditors – amounts due within one year	(2,158)	(43,058)
Fund balance as restated	9,650	98,364

Reconciliation of net income/(net expenditure) per Receipts and Payments basis to net income/(net expenditure) under Accrual basis:

	Start of Period £	End of Period £
Net income/(expenditure) as previously stated	(7,935)	88,715
Adjustments:		
Depreciation	(323)	-
Accountancy Fees	(1,500)	-
Historical Adjustment	(241)	-
Previous Period net income/(net expenditure) as restated	9,650	88,715

3. EXPENDITURE

	Unrestricted Funds £	Restricted Funds £	2024 Total Funds £	2023 Restated Total Funds £
Costs of generating charitable income				
Wages and Salaries	162,176	40,308	202,484	62,204
Direct Wages – Sub-Contractors	383	-	383	47,691
Direct Expenses	2,188	127	2,315	-
Direct Expenses Volunteer	408	27	435	217
Fundraising Costs	60	-	60	805
Lesson Consumables	38,359	-	38,359	2,080
Lesson Resources	576	-	576	51
Session Consumables	199	41	240	1,029

MORE EDUCATION

NOTES TO THE FINANCIAL STATEMENTS for the year ended 31 August 2024 (continued)

Session Resources	187	610	797	1,039
Session Visitors	-	957	957	845
Total Expenditure of generating funds	204,536	42,070	246,606	115,960

Administration Cost:	Unrestricted Funds	Restricted Funds	2024 Total Funds	2023 Restated Total Funds
	£	£	£	£
Advertising and Marketing	1,332	150	1,482	1,245
Bank Fees	60	-	60	60
Charity therapy dog	94	-	94	2,077
Cleaning	90	-	90	-
DBS Check	196	-	196	404
Depreciation Expense	-	1,348	1,348	323
Entertainment - 0%	305	-	305	-
Entertainment – 100% Business	310	51	361	577
Furniture	84	578	662	-
General Expense	8	11	19	-
Health and Safety	201	-	201	161
Insurance	3,370	-	3,370	3,421
IT Consultancy and Support	1,210	-	1,210	1,650
IT Support and Consumables	7,805	105	7,910	3,585
Kitchen Equipment and Consumables	-	273	273	-
Office Equipment (not capitalised ie <£200)	-	507	507	87
Operating Lease Payment	2,494	-	2,494	2,147
Postage, Freight and Courier	5,528	-	5,528	828
Printing and Stationery	1,880	109	1,989	196
Rent	10,910	5,864	16,774	12,940
Repairs and Maintenance	-	23,520	23,520	120
Sensory Equipment	-	369	369	5,288
Staff Training	2,444	64	2,508	4,745
Staff Wellbeing	613	-	613	257
Subscriptions	505	-	505	154
Sundry Expenses	76	-	76	-
Volunteer Training	-	-	-	82
Supervision	565	-	565	70
Telephone & Internet	2,303	304	2,607	1,755
Travel – National	88	95	183	120
Uniform	275	-	275	647
Total administration cost	42,746	33,348	76,094	42,939

MORE EDUCATION

NOTES TO THE FINANCIAL STATEMENTS for the year ended 31 August 2024 (continued)

	Unrestricted Funds	Restricted Funds	2024 Total Funds	2023 Restated Total Funds
	£	£	£	£
Governance				
Audit and Accountancy Fees	2,991	-	2,991	3,983
Professional Fees	619	4,526	5,145	1,590
Statutory and Regulatory Payments	235	-	235	-
Bookkeeping	-	-	-	838
	3,845	4,526	8,371	6,411
Total Expenditure	251,127	79,944	331,071	165,309

4. STAFF COSTS

	Unrestricted Funds	Restricted Funds	2024 Total Funds	2023 Restated Total Funds
	£	£	£	£
Direct Wages	150,545	38,426	188,971	31,587
Direct Wages – Trustees	-	-	-	30,000
Direct Wages – Employer’s NI and Tax	8,374	1,242	9,616	-
Direct Wages – Employer’s Pension Contributions	3,227	640	3,867	528
Pension Costs	30	-	30	89
Total Expenditure of generating funds	162,176	40,308	202,484	62,204

MORE EDUCATION

NOTES TO THE FINANCIAL STATEMENTS for the year ended 31 August 2024 (continued)

5. TANGIBLE FIXED ASSETS

	Freehold land & buildings	Computer Equipment	Plant, Machinery	Fixtures, Fittings and equipment	Total
	£	£	£	£	£
Cost					
01/09/2023	-	-	-	1,617.00	1,617.00
Additions	-	2,284.49	10,500.00	216.17	13,000.66
Disposals	-	-	-	-	-
31/08/2024	-	2,284.49	10,500.00	1,833.17	14,617.66
Depreciation					
01/09/2023	-	-	-	323.00	323.00
Charge for the year	-	457.00	525.00	366.00	1,348.00
Disposals	-	-	-	-	-
31/08/2024	-	457.00	525.00	689.00	1,671.00
Net Book Value					
31/08/2024	-	1,827.49	9,975.00	1,144.17	12,946.66
31/08/2023	-	-	-	1,294.00	1,294.00

MORE EDUCATION

NOTES TO THE FINANCIAL STATEMENTS

For the year ended 31 August 2024 (continued)

6. DEBTORS	2024 £	2023 £		
Prepayments and accrued income	(698)	-		
Trade Debtors	12,753	-		
Other Debtors	-	86		
	12,055	86		
	12,055	86		
7. CREDITORS: Amounts falling due within one year	2024 £	2023 £		
Trade Creditors	(38,081)	(209)		
Accruals	(1,950)	(1,500)		
Social security and other taxes	(3,027)	(449)		
	(43,058)	(2,158)		
	(43,058)	(2,158)		
8. MOVEMENTS IN FUNDS				
	01-Sep-23 £	Income £	Expenditure £	31-Aug-24 £
Unrestricted funds	(22,252)	257,718	(251,127)	(15,660)
Restricted funds	31,092	162,067	(79,944)	114,025
	9,650	419,786	(331,071)	98,364
	9,650	419,786	(331,071)	98,364

MORE EDUCATION

NOTES TO THE FINANCIAL STATEMENTS

For the year ended 31 August 2024 (continued)

9. ANALYSIS OF NET ASSETS BETWEEN FUNDS

	Unrestricted	Restricted	2024	2023
	Funds	Funds	Total	Total
	£	£	£	£
Tangible fixed assets	12,947	-	12,947	-
Cash	116,420	-	116,420	-
Other current assets/(liabilities)	(31,003)	-	(31,003)	-
	<hr/>	<hr/>	<hr/>	<hr/>
	98,364	-	98,364	-

10. RELATED PARTY TRANSACTIONS

During the year, no trustees were remunerated. (2023: £36,000).

All the trustees give freely their time without any form of remuneration or other benefit in cash or kind.

MORE EDUCATION

England & Wales - Charity number 1195650

Accounts

Registered Charity Number: 1195650

MORE EDUCATION

**TRUSTEE'S REPORT AND
FINANCIAL STATEMENTS**

FOR THE PERIOD ENDED 31 AUGUST 2023

Table of Contents

More Education	3
Charity Reference and Administrative Details	3
Trustees' Report for the period ended 31 August 2023	4
Objectives	4
Vision	5
Purpose.....	6
Structure, Governance and Management.....	6
Operational Overview.....	7
Financial Review	8
Grants, Fundraising and Sustainability	9
Reserves	9
Activities, Achievements and Reflections.....	10
Reflections	10
Future Vision	10
Independent Examiner's Report to the Trustees of More Education	12
Receipts and Payments Accounts for the period ended 31 August 2023.....	13
Statement of Assets and Liabilities as at 31 August 2023	14
Notes (forming part of the financial statements) for the period ended 31 August 2023	15

More Education

Trustees' Report for the year ended 31 August 2023

Charity Reference and Administrative Details

Trustees	Charlie Portlock Victoria Laverty Rebecca Belbin Christopher Rist Carly Considine Kelly Wilkie Kate Griffin Melanie Phipps	Appointed 14 th June 2023 Appointed 6 th March 2020 Appointed 6 th March 2020 Appointed 29 th November 2021 Appointed 9 th March 2022 Appointed 27 th June 2022 Appointed 10 th March 2022 Appointed 20 th April 2023
Charity Secretary	Rebecca Belbin	
Charity Treasurer	Victoria Laverty	
Charity Chairperson	Charlie Portlock	
Registered Charity No.	1195650	
Principal Office	23 Springfield Close Andover Hampshire SP10 2QR	
Independent Examiner	Miss S - Accounting for Purpose CIC 68 Privett Rd Fareham Hampshire PO15 6SP	
Bank	CAF Bank 25 Kings Hill Avenue Kings Hill West Malling Kent ME19 4JQ	

Trustees' Report for the period ended 31 August 2023

The Trustees present their report and the independently examined accounts for the period ended 31 August 2023.

Objectives

The charity exists to meet the following objectives:

- 1. To advance the education of children and young people aged between 5 and 16, in particular those who are neurodivergent, but also physically disabled children, through the provision of a special school or schools.*
- 2. To relieve the needs of neurodivergent individuals, their families and carers, in such ways as the trustees may from time to time decide.*

Vision

We continue to aim for an inclusive society where neurodivergent young people, adults and their families are able to live safe, sustainable and independent lives.



Purpose

To support and advocate for all neurodivergent people across Hampshire and the Isle of Wight by providing safe spaces (whether in person or online) and educational opportunities. Also to provide awareness, and promote acceptance as a trusted, authentic and professional neurodivergent-led charity.

We continue to provide support to neurodivergent families and adults, through peer support groups via the Koala Hub (a community hub for our beneficiary groups). Peer support groups ranged from Toddler groups to Teen groups, adult groups and parent support groups (both online and in person).

2023 also saw the development of the Koala Academy (distance learning and tutoring opportunities).

Structure, Governance and Management

Andover Neurodiverse Adults Group began in August 2019 as a small adult peer support group. During the pandemic it was quickly realised that the lack of in-person support, available for neurodivergent people and their families, was a real barrier to safe and independent living. The Charity was then incorporated on 27th August 2021 as More Education. The Trading Name 'Koala Community Hub' and 'Koala Academy' are used to provide services under the Charity name More Education.

All Trustees of More Education are volunteers and recruited following an open application process. Trustees hold office until the conclusion of the meeting of Trustees in the calendar year of the third anniversary of their appointment by may be re-appointed at that meeting of Trustees.

The charity is guided by the charity's constitutional document.

The Trustees are pleased to report that the current Trustee Board comprises a broad spectrum of relevant experience and professional skills to govern the charity effectively; this was further reinforced by the appointment of two new Trustees in the reporting period. Following the resignation of Trustees Kelly Wilkie and Kate Griffin, the trustees would also like to take the opportunity to thank them for their service and wish them every success for the future.

The Trustees maintain a formal risk review process whereby risks to the charity's activities are captured, assessed, assigned an owner, and what action is to be taken towards mitigating these risks. This 'Risk Register' is reviewed at each meeting of the Trustee Board and a full internal risk assessment is incorporated into the annual planning process. At all times the Trustees give due regard to the Charity Commission guidance CC26, 'Charities and risk management'.

The More Education Trustee Board meets quarterly; in the reporting period the Trustee Board met four times. Every meeting of the Trustee Board considers reports on the operation of More Education services and fundraising activities, management accounts, safeguarding, risks to ongoing service delivery, and specific

items for decision. Between the quarterly meetings, the operational team and trustees met regularly.

Operational management, including the management of fundraising, employment and volunteers is Managed by Tori Rist, CEO. Trustees, at all times, retain oversight and make decisions affecting the delivery of the charity's objectives.

Our work would not be possible without the support of our core volunteer team, which has grown since our last reporting period. We are fortunate to be supported by a reliable group of 12 people (mostly neurodivergent themselves) who want to support and grow what we offer to the community. Our volunteers totalled 336 volunteer hours in our first year of operations, which rose to nearly 1,500 hours during this period.

Pivotal to Koala's activities is providing a safe and secure environment at all of our Groups and other activities for our community. Safeguarding is a top priority for all Trustees, staff, and volunteers. More Education policies include Safeguarding and this is also integrated into role descriptions. Safeguarding training is given yearly to all Trustees, Volunteers and Staff and is bespoke to More Education and Koala's activities. At all times the Trustees seek to follow the Charity Commission 'How to' guide, 'Safeguarding children and young people'. The Trustees also ensure that the charity is always guided by the Department of Education's 'Keeping children safe in education 2022 Statutory guidance for schools and colleges, 1 September 2023'. Specific measures to ensure effective safeguarding of young people and vulnerable adults are as follows:

- All activities are supported by at least three adults, including paid staff, and trained volunteers in safe locations.
- All staff and volunteers working in direct contact with young people (and vulnerable adults) are fully and regularly trained in safeguarding; all Trustees attend a safeguarding awareness course which is regularly reviewed.
- All Trustees, staff, and volunteers are subject to annual Enhanced Disclosure & Barring Service checks to ensure their eligibility for their role.
- Safeguarding is integrated into the regular reporting to the Trustees and is a standing agenda item at every meeting of the Trustee Board.

Operational Overview

More Education trades through the names Koala Community Hub and Koala Academy. Koala Community Hub is the community-focused provision.

Koala Community Hub currently offers both in-person and on-line peer support groups for all ages, parents and carers where a diagnosis is not necessary to access our services.

This is achieved through offering a sensory-safe, trauma-informed and demand free physical space where our community can interact with their peers and other professionals. We also expanded our on-line provision to include adult peer groups – ensuring that we could meet the needs of autistic adults across Hampshire.

Other projects, for this period, included a pilot for Adult mentorship support (funded by Hampshire County Council's Local Solutions Fund) alongside the development of a co-produced Self Advocacy programme (in Partnership with the Hampshire and IOW NHS ICB).

This financial period saw a sharp increase in the demand for Koala's services. There was a 200% increase in the total number of adults and young people supported in the first half of 2023 when compared to the second half of 2022. An astounding 2249 peer support group spaces were allocated from January to June 2023, compared to 1169 places in July to December 2022.

Ranging from age 15 to adults, we have been very lucky to have had volunteers join us from all areas of our community – the majority of whom are also neurodivergent. The Trustees would like to formally thank each volunteer for their hard work and dedication to the charity.

This financial year saw the opening of our education offering 'Koala Academy', the charity is focused on improving autistic and neurodivergent people's lives - through education, training and community enablement. At year close, the education project was supporting 5 young people through a mixture of 1:1 tutoring and our distance learning programme 'Learning without Walls'.

We can confirm that all projects have followed the guidance issued by the Charity Commission regarding public benefit.

Financial Review

We have been extremely fortunate to have received funding from a number of different sources for this period. However, the support that we have been shown by grant giving organisations, fundraisers, and working hard to develop the 'Koala' name has been pivotal to being able to continue our work.

The Hampshire and IOW NHS ICB provided us with further funding towards our peer groups for young people, totaling £24,969 and we were extremely fortunate to receive support through an anonymous donor. These donations insured the sustainability of the hub and education provision as we navigated the second year of operations.

The largest change to the charity is the commencement of employment of staff members. These staff have been employed across both the community and education arms of the project and, at the end of this period, the charity had 3 full-time and 3 part-time members of staff. The staff members have been funded through grants, fees paid to the education project and the extremely generous donations of an anonymous donor. Without these supporters we could not have moved the charity to the next phase of development and the trustees are extremely grateful for their support.

Grants, Fundraising and Sustainability

The Trustees would like to thank Sovereign Housing, Hampshire County Council, Hampshire and IOW NHS ICB, Powells Limited, the Greenham Trust, the Rotary Club Andover, Ringland Opticians, Tesco Groundworks Fund, and all of the individual fundraisers for their support and funding during our second year of operations.

The charity was also extremely fortunate to be named as 'Charity of the Year' twice during this period. The first was through the generous support of Kate Underwood HR who provided pro bono HR support for the charity from January 2023 for the period of a year. This support was pivotal to us being able to recruit our first paid staff.

The Andover Carnival also named Koala as one of two Charities who received a substantial donation of £2,500 which helped to support some of our young person groups while more sustainable funding was sought.

Koala's peer support groups are free to attend, yet donations are encouraged where possible. These donations are used to cover the core costs of running the groups – from room rent to resource costs. In this period, attendance donations doubled from last year to £1605.

In addition to the community and educational offers from Koala, there has also been a push towards offering more outreach support to the community. This included training for local charities and schools which produced a collective income of £1895 and is a provision that we intend to grow and develop.

The Trustees aim is now to ensure that we have a robust strategy for continuing the support that Koala currently offers, as well as building the support that will be available through the charities Educational provision, Koala Academy.

Reserves

The building of reserves, to cover 3 months' operational costs, continues to be a core aim of the charity. Whilst it is extremely difficult to build reserves in the current charity landscape, this will continue to be a priority for the charity.

Activities, Achievements and Reflections

Koala's community offer has continued to grow and now offers 30 monthly sessions, including 2 online.

There is a lack of knowledgeable community support for neurodivergent individuals, and their families and we are proud of the impact that Koala is having on the local community. This is an issue that is noted to be UK wide and is putting an inordinate pressure on both CAMHs and the local CMHTS. For this reason, Koala has commenced a training offer to the local community and professional organisations.

As hoped, in our last annual report, the charity has successfully navigated an Adult mentorship pilot which provided much needed support to the local autistic community. We hope to build upon the success of this pilot in the next financial period.

Our co-produced self-advocacy training has also been developed and is proving extremely successful amongst the local community. We hope to offer this to the wider community over the next year.

Impact reporting has improved greatly over this period and we are proud to now be able to offer robust analytical data to support the work that we achieve. Our 2023 year end impact report can be viewed here: <https://www.moreeducation.co.uk/testimonials-1>

Reflections

Koala Community Hub opened in an effort to combat the negative impacts and isolation that our community face on a daily basis. It was always supposed to be an 'add on' to the educational offer but has, in fact, become an important and life-changing support to many neurodivergent people and their families. For this reason the community hub will continue, as a project in its own right, alongside the development of the educational arm of the charity.

Koala's provision has grown extremely quickly and we now intend to reflect carefully on the needs of the community and the sustainability of the charity as a priority.

The full-time education provision continues to be a major project for the senior management team.

Future Vision

As we move into our third year of operations, it is important that the charity find ways to become financially sustainable.

Our focus will be to continue offering support through the hub's peer support groups but to also expand the education provision.

Koala Academy's 'Learning without Walls' provision is now offering distance learning and tutoring opportunities to young people who cannot access formal educational opportunities. Both Wiltshire and Hampshire Local Authorities are working with Koala to commission these services.

Outreach and training will continue to develop, ensuring that other sustainable funding opportunities are created and developed within the charity.

The search for an educational site continues and this will also bring much needed funding into the charity – some of which will be used to ensure that the links between the community and the education provision are continued for many generations to come.

Independent Examiner's Report to the Trustees of More Education

More Education - Charity Number 1195650

**Independent Examiner's Report
To the Trustees of More Education
For the year ending
31 August 2023**

I report to the charity trustees on my examination of the accounts of the CIO for the period ended 31 August 2023

Responsibilities and basis of report

As the charity's trustees of the CIO, you are responsible for the preparation of the accounts in accordance with the requirements of the Charities Act 2011 ("the Act").

It is my responsibility to:-

- * examine the accounts under section 145 of the 2011 Act, to follow the procedure laid down in the general Directions given by the Charity Commission under Section 145(5)(b) of the 2011 Act, and
- * to state whether particular matters have come to my attention

Basis of independent examiner's report

My examination was carried out in accordance with the general Directions given by the Charity Commission. An examination includes a review of the accounting records kept by the charity and a comparison of the accounts presented with those records. It also includes consideration of any unusual items or disclosures in the accounts, and seeking explanations from you as trustees concerning any such matters. The procedures undertaken do not provide all the evidence that would be required in an audit and consequently no opinion is given as to whether the accounts present a 'true and fair view' and the report is limited to those matters set out in the statement below.

Independent examiner's statement - matter of concern identified

I have completed my examination. I confirm that no material matters have come to my attention

(1) which give me cause to believe that in any material respect the requirements:

- * to keep accounting records in accordance with section 386 of the Companies Act 2006; and
- * to prepare accounts which accord with the accounting records, comply with the accounting requirements of section 396 of the Companies Act 2006 and with the methods and principles of the Statement of Recommended Practice: Accounting and Reporting by Charities.

have not been met or;

(2) to which in my opinion, attention should be drawn in order to enable the proper understanding of the accounts to be reached.

Fiona Sanderson BA(Hons) FCMA CGMA
Miss S - Accounting for Purpose CIC
68 Privett Road
Fareham
Hampshire
PO15 6SP

Signed:



Date: 29 June 2024

Receipts and Payments Accounts for the period ended 31 August 2023

More Education

Receipts and Payments Accounts - Year Ending 31 August 2023

	Notes	31 August 2023		Total Funds
		Unrestricted	Restricted	
Receipts:				
Donations	2	45,564	23,084	68,648
Grants	2	2,150	66,498	68,648
Consultancy		1,895		1,895
Fees		5,756		5,756
Gift Aid		10,319		10,319
Other		77		77
Total		65,761	89,582	155,343
Payments:				
Raising Funds	3	805		805
Charitable Activities	3	67,380	38,839	106,219
Administration and Support Costs	5	37,808	18,446	56,254
Total		105,993	57,285	163,278
Net Receipts/(Payments)	-	40,232	32,297 -	7,935
Cash Funds at 31 August 2023	4	-	-	10,428
Cash Funds at 31 August 2022	4, 8	-	-	18,151

Statement of Assets and Liabilities as at 31 August 2023

More Education

Statement of Assets & Liabilities - year ending 31 August 2023

	Notes	31 August 2023		
		Unrestricted	Restricted	Total Funds
Cash Funds				
Cash at Bank and in Hand	8	-	-	10,428
Total		-	-	10,428
Assets retained for the charity's own use				
Office Equipment and Computers		476	1,141	1,617
Total		476	1,141	1,617
Liabilities				
Creditors: amounts due within 12 months	6	1,200	-	1,200
Net Wages		218	-	218
Pension		404	-	404
		404	-	404

The financial statements were approved by the Board of Trustees on 29th June 2024 and signed on their behalf by:



Charlie Portlock
Chair of Trustees

Notes (forming part of the financial statements) for the period ended 31 August 2023

More Education Receipts and Payments Accounts - Year Ending 31 August 2023

1) Receipts and Payments Accounts

Receipts and payments accounts are statements that summarise the movement of cash into and out of the organisation during the financial year. In this context "cash" includes cash equivalents, for example, bank accounts where cash can be readily withdrawn to pay for debts as they become due.

2) Donations and Legacies

	31 August 2023			31 August 2022		
	Unrestricted	Restricted	Total Funds	Unrestricted	Restricted	Total Funds
Receipts:						
Donations and Gifts	45,597	23,084	68,681	15,470		15,470
Charitable Activities	7,651	-	7,651	2,575		2,575
Gift Aid	10,319		10,319			-
Grants			-			-
TVBC			-		2,000	2,000
Tesco		1,000	1,000			-
Sovereign Housing		9,752	9,752		1,000	1,000
Persimmon			-	1,000		1,000
Simply Health			-		5,000	5,000
Hampshire County Council	2,150	14,946	17,096		3,460	3,460
Bauer			-		4,674	4,674
NHS - H&IW		40,800	40,800		20,000	20,000
Hampshire & Isle of Wight Community Fund			-		5,000	5,000
Interest and Other Income	77		77			-
	<u>65,793</u>	<u>89,582</u>	<u>155,376</u>	<u>19,045</u>	<u>41,134</u>	<u>60,179</u>

3) Direct Charitable Expenditure

	31 August 2023			31 August 2022		
	Unrestricted	Restricted	Total Funds	Unrestricted	Restricted	Total Funds
Raising Funds	805	-	805			805
Charitable Activities	67,380	38,839	106,219			127,171
	<u>68,184</u>	<u>38,839</u>	<u>107,024</u>	<u>-</u>	<u>-</u>	<u>127,975</u>

**More Education
Receipts and Payments Accounts - Year Ending 31 August 2023**

4) Cash Funds

	31 August 2023			31 August 2022		
	Unrestricted	Restricted	Total Funds	Unrestricted	Restricted	Total Funds
CAF Bank			10,062			15,584
Natwest Bank			366			2,567
	-	-	10,428	-	-	18,151

5) Charity Management and Administration

	31 August 2023			31 August 2022		
	Unrestricted	Restricted	Total Funds	Unrestricted	Restricted	Total Funds
Governance Costs	1,200	-	1,200			-
Support Costs	36,527	18,446	54,973			35,101
Volunteer Costs	82	-	82			82
	37,808	18,446	56,254	-	-	35,182

6) Current Liabilities - Creditors

	31 August 2023			31 August 2022		
	Unrestricted	Restricted	Total Funds	Unrestricted	Restricted	Total Funds
Accountant	750		750	750		750
Independent Examiner	450		450	450		450
	450	-	450	1,200	-	1,200

7) Related Party Transactions and Trustees' Expenses and Remuneration

In the period, Trustee Victoria Rist received £36,000 for her time running support groups for the Koala Hub as per the dispensation granted from The Charity Commission.

All other Trustees give freely their time and expertise without any form of remuneration or other benefit in cash or kind.

8) Prior Year Adjustment

The Cash Balances and Reserves at 31 August 2022 have been corrected by £84.

MORE EDUCATION

England & Wales - Charity number 1195650

Accounts

Registered Charity Number: 1195650

MORE EDUCATION

**TRUSTEE'S REPORT AND
FINANCIAL STATEMENTS**

FOR THE PERIOD ENDED 31 AUGUST 2022

Table of Contents

More Education	3
Charity Reference and Administrative Details	3
Trustees' Report for the period ended 31 August 2022	4
Objectives	4
Vision	5
Purpose.....	6
Structure, Governance and Management.....	6
Operational Overview.....	7
Financial Review	8
Grants, Fundraising and Sustainability	8
Reserves	9
Activities, Achievements and Reflections.....	10
Reflections	13
Future Vision	14
Independent Examiner's Report to the Trustees of More Education	15
Receipts and Payments Accounts for the period ended 31 August 2022.....	16
Statement of Assets and Liabilities as at 31 August 2022	17
Notes (forming part of the financial statements) for the period ended 31 August 2022	18

More Education

Trustees' Report for the year ended 31 August 2022

Charity Reference and Administrative Details

Trustees	Mark Rist	
	Victoria Lavery	
	Rebecca Belbin	
	Christopher Rist	Appointed 29 th November 2021
	Carly Considine	Appointed 9 th March 2022
	Kelly Wilkie	Appointed 27 th June 2022
	Victoria Rist	
	Kate Griffin	Appointed 10 th March 2022
	Alexandra Walker	Resigned 1 st December 2021
	Felicity Knight	Resigned 15 th May 2022
	Andrew Witcher	Resigned 1 st April 2022

Charity Secretary	Rebecca Belbin
Charity Treasurer	Victoria Lavery
Charity Chairperson	Charlie Portlock

Registered Charity No. 1195650

Principal Office 23 Springfield Close
Andover
Hampshire
SP10 2QR

Independent Examiner Miss S - Accounting for Purpose CIC
68 Privett Rd
Fareham
Hampshire
PO15 6SP

Bank CAF Bank
25 Kings Hill Avenue
Kings Hill
West Malling
Kent
ME19 4JQ

Trustees' Report for the period ended 31 August 2022

The Trustees present their report and the independently examined accounts for the period ended 31 August 2022.

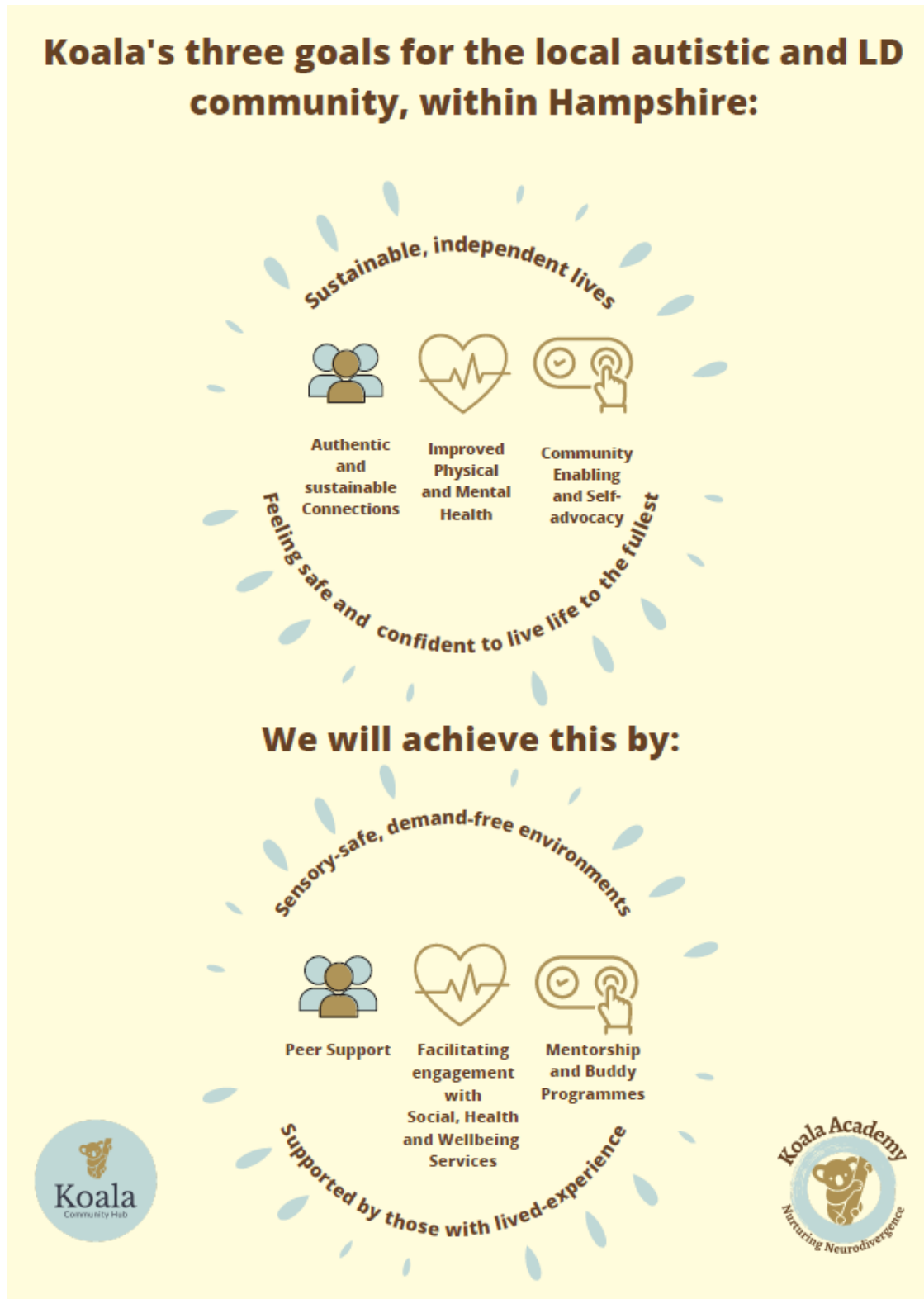
Objectives

The charity exists to meet the following objectives:

- 1. To advance the education of children and young people aged between 5 and 16, in particular those who are neurodivergent, but also physically disabled children, through the provision of a special school or schools.*
- 2. To relieve the needs of neurodivergent individuals, their families and carers, in such ways as the trustees may from time to time decide.*

Vision

We aim for an inclusive society where neurodivergent young people, adults and their families are able to live safe, sustainable and independent lives.



Purpose

To support and advocate for all neurodivergent people across Hampshire and the Isle of Wight by providing safe spaces (whether in person or online) and educational opportunities. Also to provide awareness, and promote acceptance as a trusted, authentic and professional neurodivergent-led charity.

We have achieved this by providing support to neurodivergent families and adults, through peer support groups via the Koala Hub (a community hub for our beneficiary groups).

These groups ranged from Toddler groups to Teen groups, adult groups and parent support groups (both online and in person).

Structure, Governance and Management

Andover Neurodiverse Adults Group began in August 2019 as a small adult peer support group. During the pandemic it was quickly realised that the lack of in-person support, available for neurodivergent people and their families, was a real barrier to safe and independent living. The Charity was then incorporated on 27th August 2021 as More Education. The Trading Name 'Koala Community Hub' and 'Koala Academy' are used to provide services under the Charity name More Education.

All Trustees of More Education are volunteers and recruited following an open application process. Trustees hold office until the conclusion of the meeting of Trustees in the calendar year of the third anniversary of their appointment by may be re-appointed at that meeting of Trustees.

The charity is guided by the charity's constitutional document.

The Trustees are pleased to report that the current Trustee Board comprises a broad spectrum of relevant experience and professional skills to govern the charity effectively; this was further reinforced by the appointment of four new Trustees in the reporting period. Following the resignation of Trustees Alex Walker, Felicity Knight and Andrew Witcher, the trustees would also like to take the opportunity to thank them for their service and wish them every success for the future.

The Trustees maintain a formal risk review process whereby risks to the charity's activities are captured, assessed, assigned an owner, and what action is to be taken towards mitigating these risks. This 'Risk Register' is reviewed at each meeting of the Trustee Board and a full internal risk assessment is incorporated into the annual planning process. At all times the Trustees give due regard to the Charity Commission guidance CC26, 'Charities and risk management'.

The More Education Trustee Board meets quarterly; in the reporting period the Trustee Board met four times. Every meeting of the Trustee Board considers reports on the operation of More Education services and fundraising activities, management accounts, safeguarding, risks to ongoing service delivery, and specific items for decision. Between the quarterly meetings, the operational team and trustees met regularly.

Operational management, including the management of fundraising and employment of volunteers is Managed by Tori Rist, Head of Operations. Trustees, at all times, retain oversight and make decisions affecting the delivery of the charity's objectives.

Our work would not be possible without the support of our core volunteer team – a reliable group of 10 people (mostly neurodivergent themselves) who want to support and grow what we offer to the community. Our volunteers totalled 336 volunteer hours in our first year of operations. We are also proud of our 90% volunteer retention rate. For the first 10 months of operations, our peer support groups were entirely managed by volunteers.

Pivotal to Koala's activities is providing a safe and secure environment at all of our Groups and other activities for young people. Safeguarding is a top priority for all Trustees, staff, and volunteers. More Education policies include Safeguarding and this is also integrated into role descriptions. Training is given yearly to all Trustees, Volunteers and Staff and is bespoke to More Education and Koala's activities. At all times the Trustees seek to follow the Charity Commission 'How to' guide, 'Safeguarding children and young people'. The Trustees also ensure that the charity is always guided by the Department of Education's 'Keeping children safe in education 2022 Statutory guidance for schools and colleges, 1 September 2022'. Specific measures to ensure effective safeguarding of young people and vulnerable adults are as follows:

- All activities are undertaken by at least two adults, including paid staff, and trained volunteers in safe locations.
- All staff and volunteers working in direct contact with young people (and vulnerable adults) are fully and regularly trained in safeguarding; all Trustees attend a safeguarding awareness course which is regularly reviewed.
- All Trustees, staff, and volunteers are subject to annual Enhanced Disclosure & Barring Service checks to ensure their eligibility for their role.
- Safeguarding is integrated into the regular reporting to the Trustees and is a standing agenda item at every meeting of the Trustee Board.

Operational Overview

More Education trades through the names Koala Community Hub and Koala Academy. Koala Community Hub is the community-focused provision.

Alongside our developing education offering 'Koala Academy', the charity is focused on improving autistic and neurodivergent people's lives - through education, training and community enablement.

This is achieved through offering a sensory-safe, trauma-informed and demand free physical space where our community can interact with their peers and other professionals. We are also currently expanding our on-line provision to include peer groups, parent groups and a gaming server.

Koala Community Hub currently offers both in-person and on-line peer support groups for all ages, parents and carers where a diagnosis is not necessary to access our services.

We can confirm that all projects have followed the guidance issued by the Charity Commission regarding public benefit.

Koala would have not been successful without the dedication, enthusiasm and support of the volunteer team.

Ranging from 14 to adults, we have been very lucky to have had volunteers join us from all areas of our community – the majority of whom are also neurodivergent. The Trustees would like to formally thank each volunteer for their hard work and dedication to the charity.

Financial Review

Like all charities operating at the end of the pandemic, fundraising and grant receiving have been difficult areas to navigate.

However, the support that we have been shown by grant giving organisations, fundraisers, and working hard to develop the 'Koala' name has been pivotal to being able to continue our work.

For example, we achieved a surplus of £18,236 in this first period as we concentrated hard on fundraising, grant writing and promoting the work that Koala does. As a result of this we received a substantial grant of £20,000 from Hampshire and IOW NHS CCG to sustain our young person groups. Our costs were high because it was a year of setting up processes, procedures and indeed our physical Community Hub, all of which involved resources and equipment. The surplus also shows due to our NHS grants running from April to April – thus our 2022/23 funding was still live at the time of year end.

Grants, Fundraising and Sustainability

The Trustees would like to thank Sovereign Housing, Hampshire County Council, Hampshire and IOW NHS CCG, Persimmon Homes, the Greenham Trust, Hampshire and IOW Community Fund, Wave 105 FM, Simplyhealth and Test Valley Borough Council for their support and funding during our first year of operations.

The first year also saw two successful charitable events which raised £1200 for the general operational support of the community hub and £1300 towards the implementation of two sensory rooms for our community. Both of these fundraising activities were 50% more successful than we thought.

Koala's peer support groups are free to attend, yet donations are encouraged where possible. These donations are used to cover the core costs of running the groups – from room rent to resource costs. In this period, attendance donations were £838.00.

Support has also been received by individual fundraisers who have been passionate about ensuring that Koala remains open for the community. This included participation in the Great South Run by Julie Stratton and a collective 'Kilometers for Koala' winter walking challenge which saw a group of community members raising £1200 towards the ongoing running costs of the hub.

The Trustees aim is now to ensure that we have a robust strategy for continuing the support that Koala currently offers, as well as building the support that will be available through the charities Educational provision, Koala Academy.

Reserves

Whilst the board has not yet agreed a formal policy on reserves, it is anticipated that something akin to 3mths running costs as a minimum will be agreed upon in the coming financial year, especially as we begin to embark on the possibility of leasing our own site.

Activities, Achievements and Reflections

Koala commenced operations within a local community space, on a monthly basis, and has since moved to large community hub space so that our groups can happen more frequently. Whilst we embarked on the Koala Community Hub project with only 2 monthly groups, our reach has grown faster than could have been expected.

There is a lack of knowledgeable community support for neurodivergent individuals, and their families and we are proud of the impact that Koala is having on the local community. This is an issue that is noted to be UK wide and is putting an inordinate pressure on both CAMHs and the local CMHTS.

Research shows that our community is some of the most vulnerable in society – not only for accessing services, but are often more vulnerable to peer abuse, county lines and other practices targeting young people who often struggle to understand other's intentions. Education, employment and housing are other areas that are difficult for our community to navigate and we have so many requests for support and advice in these areas. We work with all ages of young people, from toddlers to Young Adults and ensure that they have a voice when we are considering changes to the service.

Our peer support groups are limited to 15 people for adults/teens and 10 for primary aged and younger children. This ensures that our space is sensory friendly. Koala has a 'demand free' focus which ensures that just making it into the building is celebrated – no one is forced to engage in particular activities.



We have a wide range of resources including books, board games, sensory equipment, art equipment and general toys. We have also been able to open our own gaming area towards the end of this period which has helped us to work towards bringing more young vulnerable male teens into the hub.

Upon opening, we offered 2 monthly groups. Over the first year of operations, we offered **22 adult peer support sessions, 17 for parents and 86 sessions for young people under 18.**

This equated to **498 parent/carer spaces being filled, 190 adults' spaces and 647 under 18 spaces.**

Our impact reporting is developing and for our next financial year, we will be able to report on the number of returning members as well as the impact our services have on people's mental health and general wellbeing, across all projects.

We now **offer approximately 21 groups to 260 people every month** and this has only been possible with the support we have received from community fundraisers, grant givers and donors – all of whom put their trust and belief into a small and unknown charity that opened amidst the Covid pandemic. Our peer support groups also include an online Parent and an online Adult group – this is key to ensuring that we can support those who cannot yet access our hub in person.

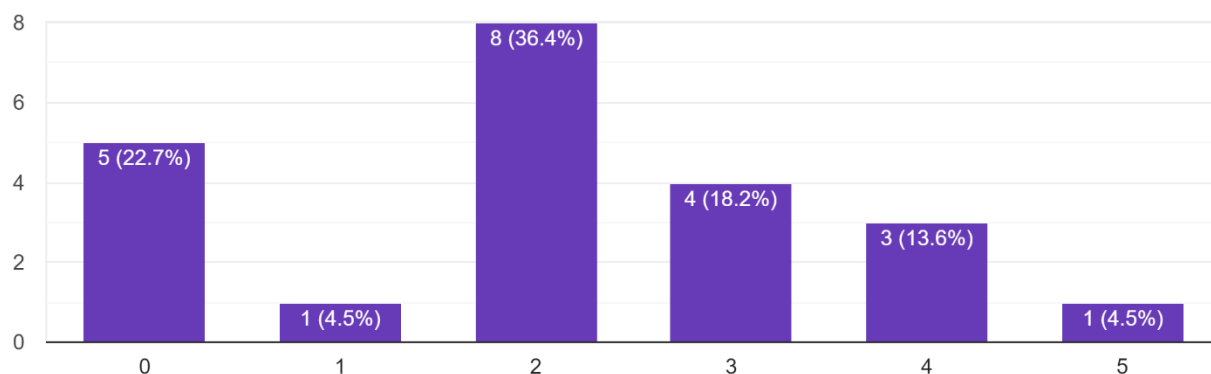
Work has commenced to scope the possibility of a young person and adult mentorship scheme and we continue to build strong relationships with other charities and organisations – ensuring that our community have access to all that is offered locally.

We have carried out various surveys over the past year and it appears that our community would strongly agree that the Koala Community Hub provides them with the connection and belonging that they have not been able to seek elsewhere. We also know that we are building on our community member's self-esteem and confidence when self-advocating for themselves.

Our impact on people's mental health has been phenomenal and something we are very proud of. The following data was collected from our first community survey, in summer 2022. The following two graphs asked people where they thought their mental health was before and after engaging with Koala (1 being poor mental health).

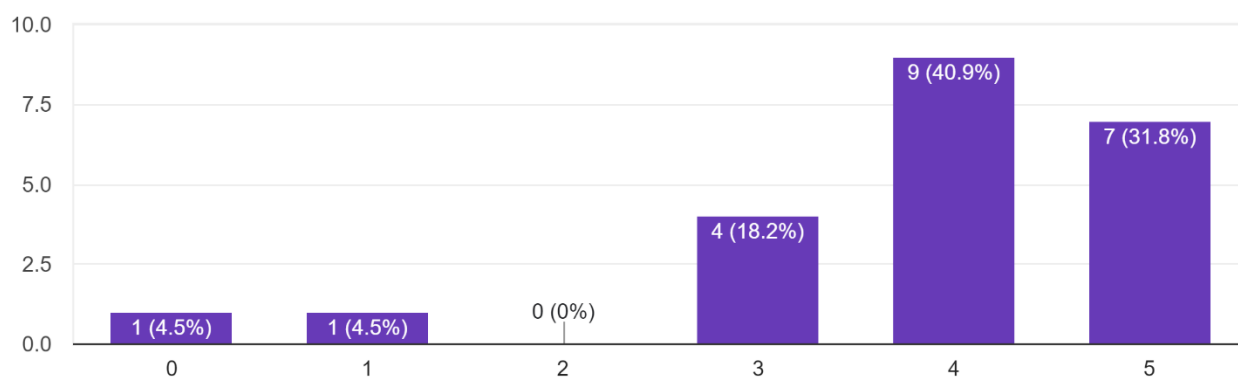
On a scale of 1 to 5, where would you say your mental health was before you engaged with Koala?

22 responses



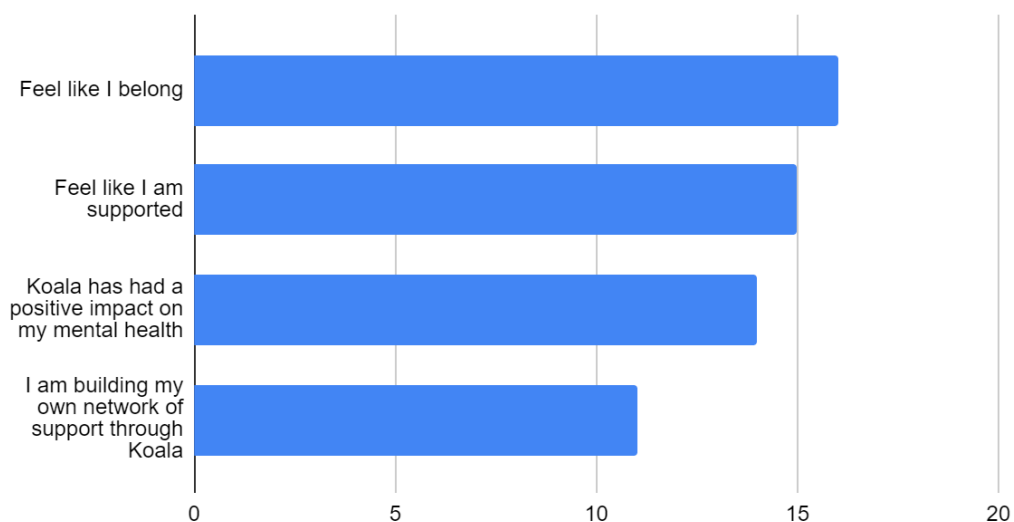
On a scale of 1 to 5, where would you say your mental health is now?

22 responses



We have also always been aware of the risk of isolation for our community and the need for belonging and feeling safe in an environment. This is an area that we believe we are combatting by creating a safe community for people to access (as shown in the feedback below):

Since becoming part of the Koala community, what benefits have you found?



Reflections

Koala Community Hub opened in an effort to combat the negative impacts and isolation that our community face on a daily basis. It was always supposed to be an 'add on' to the educational offer but has, in fact, become an important and life-changing support to many neurodivergent people and their families. For this reason the community hub will continue, as a project in its own right, alongside the development of the educational arm of the charity.

Due to the speed of growth of the hub, the next financial year will concentrate on careful sustainability planning and strategic work around fully ascertaining what projects are working best. This will include a full strategic review and we hope that we will begin to employ staff to work in various capacities across the charity.

Unfortunately, whilst not without due attention and dedication, the Koala Academy has not yet come to fruition. The Trustees are aware that this is a key part of the charity's strategy and it is important that this is reviewed and other opportunities are explored to create sustainability for the charity. This will be a core focus for the Trustees in the next period.

Future Vision

As we move into our second year of operations, it is important that the charity find ways to become financially sustainable.

Our focus will be to continue offering support through the hub's peer support groups but to also expand this support to include Adult and Young Person mentorship opportunities.

Koala Academy will also commence the opening of the 'Learning without Walls' provision which will offer distance learning and tutoring opportunities to young people who cannot access formal educational opportunities.

Outreach and training will also commence, ensuring that other sustainable funding opportunities are created and developed within the charity.

Reporting and evidence of impact is being streamlined so that we can effectively show the positive impact that we have on our community on a daily basis.

The search for an educational site continues and this will also bring much needed funding into the charity – some of which will be used to ensure that the links between the community and the education provision are continued for many generations to come.

Independent Examiner's Report to the Trustees of More Education

I report to the charity trustees on my examination of the accounts of the CIO for the period ended 31 August 2022.

Responsibilities and basis of report

As the charity's trustees of the CIO, you are responsible for the preparation of the accounts in accordance with the requirements of the Charities Act 2011 ("the Act").

It is my responsibility to:

- * examine the accounts under section 145 of the 2011 Act,
- * to follow the procedure laid down in the general Directions given by the Charity Commission under Section 145(5)(b) of the 2011 Act, and
- * to state whether particular matters have come to my attention

Basis of independent examiner's report

My examination was carried out in accordance with the general Directions given by the Charity Commission. An examination includes a review of the accounting records kept by the charity and a comparison of the accounts presented with those records. It also includes consideration of any unusual items or disclosures in the accounts and seeking explanations from you as trustees concerning any such matters. The procedures undertaken do not provide all the evidence that would be required in an audit and consequently, no opinion is given as to whether the accounts present a 'true and fair view' and the report is limited to those matters set out in the statement below.

Independent examiner's statement - matter of concern identified

I have completed my examination. I confirm that no material matters have come to my attention (other than those disclosed below) which give me cause to believe that in, any material respect:

- * accounting records were not kept in accordance with section 130 of the Act; or
- * the accounts do not accord with the accounting records.

In carrying out my examination I noted a lapse in the keeping of accounting records recording the restricted funds to which spend was associated. Income was clearly identified as Restricted or Unrestricted, but expenditure was not. You have confirmed that this was an oversight in your first year of running the CIO and that this has now been corrected for all transactions from 1 September 2022. Similarly, all internal financial controls have been reviewed and tightened as you have come to appreciate the relevance of them.

I confirm that there are no other matters to which your attention should be drawn to enable a proper understanding of the accounts to be reached.

Fiona Sanderson BA(Hons) ACMA CGMA MICB
Miss S - Accounting for Purpose CIC
68 Privett Road
Fareham
Hampshire, PO15 6SP

Signed:



Date:

29 June 2023

Receipts and Payments Accounts for the period ended 31 August 2022

	Notes	31 August 2022		Total Funds
		Unrestricted	Restricted	
Receipts:				
Donations	2	15,470		15,470
Grants	2	1,000	41,134	42,134
Fundraising Activities		2,575		2,575
Other		2		2
Total		19,047	41,134	60,181
Payments:				
Raising Funds	3	135		135
Charitable Activities	3			26,110
Administration and Support Costs	5			14,288
Total		135	-	40,533
Net Receipts/(Payments)				19,648
Cash Funds at 31 August 2022	4	-	-	18,236

Statement of Assets and Liabilities as at 31 August 2022

	Notes	30 June 2022		Total Funds
		Unrestricted	Restricted	
Cash Funds				
Cash at Bank and in Hand		-	-	18,236
Total		-	-	18,236
Assets retained for the charity's own use				
Office Equipment and Computers		-	-	1,412
Total		-	-	1,412
Liabilities				
Creditors: amounts due within 12 months	6	1,200	-	1,200
		1,200	-	1,200

The financial statements were approved by the Board of Trustees on 29th June 2023 and signed on their behalf by:



Charlie Portlock
Chair of Trustees

Notes (forming part of the financial statements) for the period ended 31 August 2022

1) Receipts and Payments Accounts

Receipts and payments accounts are statements that summarise the movement of cash into and out of the organisation during the financial year. In this context "cash" includes cash equivalents, for example, bank accounts where cash can be readily withdrawn to pay for debts as they become due.

2) Donations and Legacies

	31 August 2022		
	Unrestricted	Restricted	Total Funds
Receipts:			
Donations and Gifts	8,470		8,470
Anonymous Donor	7,000		7,000
Charitable Activities	2,575		2,575
Grants			-
TVBC		2,000	2,000
Sovereign Housing		1,000	1,000
Persimmon	1,000		1,000
Simply Health		5,000	5,000
Hampshire County Council		3,460	3,460
Bauer		4,674	4,674
NHS - H&IW		20,000	20,000
Hampshire & Isle of Wight Community Fund		5,000	5,000
	19,045	41,134	60,179

3) Direct Charitable Expenditure

	31 August 2022		
	Unrestricted	Restricted	Total Funds
Raising Funds			135
Charitable Activities			26,110
	-	-	26,245

4) Cash Funds

	31 August 2022		Total Funds
	Unrestricted	Restricted	
CAF Bank			15,524
Natwest Bank			2,712
			<hr/>
	-	-	18,236
			<hr/>

5) Charity Management and Administration

	31 August 2022		Total Funds
	Unrestricted	Restricted	
Governance Costs			-
Support Costs			13,255
Volunteer Costs			1,033
			<hr/>
	-	-	14,288
			<hr/>

6) Current Liabilities - Creditors

	31 August 2022		Total Funds
	Unrestricted	Restricted	
Accountant	750		750
Independent Examiner	450		450
			-
	<hr/>		<hr/>
	450	-	450
			<hr/>

7) Related Party Transactions and Trustees' Expenses and Remuneration

In the period, Trustee Victoria Rist received £13,000 for her time running support groups for the Koala Hub as per the dispensation granted from The Charity Commission.

All other Trustees give freely their time and expertise without any form of remuneration or other benefit in cash or kind.

Whilst there is no separate Trustee Indemnity Insurance purchased, Trustees are covered by the Employer Liabilities section of the charity insurance.