



Annual Report

Annual Report of the Trustees and
Audited Financial Statements for the
year ended 30th April 2024



Helping seriously ill children and their families to keep moving forward

Contents

Annual report of the Trustees

Who we are, our vision and mission	4
Areas of operation and beneficiaries	5
Message from our Chair of Trustees	6
Message from our CEO and Founder	7
Our impact in numbers	8
Echoes & healthcare professionals	9
Therapy services	10
Respite services	11
Special moments	12
Doorstep Santa & volunteers	13
How we fund our services	14
Structure, governance and management	16

Financial Statements

Statement of the Trustee's responsibilities in relation to the financial statements	18
Independent Auditor's Report	19
Statement of Financial Activities including Income and Expenditure Accounts	22
Balance Sheet	24
Statement of Cash Flows	25
Notes to the Financial Statements	26
Reference and Administrative Details	34



Report of the Trustees

For the Year Ended 30th April 2024

The Trustees present their report and the audited Financial Statements of the charity for the year ended 30th April 2024. The Trustees have adopted the provisions of the Statement of Recommended Practice (SORP) "Accounting and Reporting by Charities" (FRS 102) in preparing the annual report and financial statements of the charity.

The financial statements have been prepared in accordance with the accounting policies set out in notes to the accounts and comply with the charity's governing document, the Charities Act 2011 and Accounting and Reporting by Charities: Statement of Recommended Practice applicable to charities preparing their accounts in accordance with the Financial Reporting Standard applicable in the UK and Republic of Ireland published July 2019.

Momentum Children's Charity is a registered Charitable Incorporated Organisation (CIO). Our aims and objectives are regularly reviewed by the Trustees, in line with the Charity Commission's general guidance on public benefit. In particular, the Trustees consider how the charity's planned activities will contribute to these agreed aims and objectives.

Why families need our support

The impact of a diagnosis of cancer or a life-challenging condition is devastating and wide-ranging for children, young people and their families and carers. The sick child will receive appropriate clinical care, but their wider needs – and those of their family – are often neglected. The vast demands on NHS resources are extensively highlighted, and the importance of the role and services that Momentum provides as it enters its 20th year continued to be reinforced. From the moment a family is referred to us from one of our local hospital partners, a dedicated Momentum Family Support Worker assesses their individual needs in order to offer personally tailored emotional and practical support, both in hospital and at home, when it's needed most.

Our vision

Our vision is to ensure that no family whose child has cancer or a life-challenging condition has to cope alone.

Our mission

Our mission is to make the experience of cancer or life-challenging illnesses more bearable for children and their families in London, Surrey and Sussex. We're there whatever the outcome, and provide support to families for as long as needed.

Our objects

The charity was established to promote, improve and protect the physical and mental health of children with cancer and life-challenging conditions and their families in London and the South-East through the provision of direct support, practical advice and support services at home and in hospital as well as providing holiday homes for respite, days out and other activities in the community.

We aim to relieve sickness and preserve the health of children with cancer and other life-challenging conditions at Kingston Hospital and other local hospitals in London and the South-East by providing or assisting in the provision of equipment, facilities and services.

Additionally, we offer bereavement support to families whose children have died as a result of cancer and life-challenging conditions in London and the South-East.

About us

We work with children, siblings, parents and carers to understand their needs offering them personally tailored support both in hospital and at home.

Our support services include counselling, peer to peer support and a range of creative therapy services – such as play, art and music – as well as special experiences and respite breaks to ease some of the stresses that come with a gruelling treatment plan. If the unthinkable happens, and a child dies, we offer bereavement support and stand by families for as long as they need us. We also improve the environment for children treated in hospital with children's ward refurbishments, transforming bare, clinical areas into bright, child-friendly spaces.

Our hospital partnerships

Our family support work starts when one of our nine NHS partnership hospitals refer a family to us:

- East Surrey Hospital (Redhill)
- Epsom Hospital
- Kingston Hospital
- The Royal Marsden Hospital (Sutton)
- Royal Alexandra Children's Hospital (Brighton)
- Royal Surrey County Hospital (Guildford)
- St George's Hospital (London)
- St Peter's Hospital (Chertsey)
- Worthing Hospital

Our areas of operation

We work across London, Surrey and Sussex covering the following areas:

London boroughs

Croydon
Hounslow
Kingston upon Thames
Lambeth
Merton
Richmond
Sutton
Wandsworth

Outside London local authorities

Crawley
Elmbridge
Epsom and Ewell
Guildford
Horsham
Reigate and Banstead
Runnymede
Spelthorne
Surrey Heath
Woking

Sussex boroughs

Chichester
Bognor Regis
Petworth and Pulborough
Arundel and Littlehampton
Worthing
Adur Valley
Brighton and Hove
Mid Sussex



Our beneficiaries

We support children aged 0-18 years and will continue to support them and their family for as long as they are being treated as a paediatric patient in our partner hospitals. We support the entire family, including parents, carers, siblings and grandparents.

Families are referred to us from one of our partner hospitals although we occasionally have referrals from other hospitals in the area such as Croydon, Berkshire, Hampshire, Kent and West Middlesex. We do not select which families we support based on any socio-economic criteria. Families are offered appropriate support services depending on their emotional and practical needs.

Message from our Chair of Trustees



The end of the year marked the 20th anniversary since the start of Momentum. From those first tentative steps, Momentum has grown into a large, modern and successful charity. From that very first child who needed somewhere to keep ice lollies cold to help with sore gums from their treatment, Momentum has raised over £9m to support the families and children with life challenging illnesses. A quite amazing achievement and one that all can be very proud of.

Against this background, it seemed very fitting that Bianca Effemey, our founder and CEO, was awarded an OBE in the King's first honours list. We were all so proud when in October, Bianca was presented with her award at Windsor Castle by the Princess Royal.

Once again, despite the background of continued economic uncertainty, I am delighted to report that this has been another excellent year. The fundraising team made the outstanding achievement of exceeding an income of £1.1m. We also saw the completion of the first year using our Momentum Outcomes tool designed to measure changes throughout our relationship with families from our personalised plan of support. The results showed a marked improvement in our families' journey showing that the services provided by our family support workers had a very real and positive impact.

We also completed the Paediatric Oncology Unit at Kingston Hospital which was met with universal acclaim.

In June and September 2023 the Board welcomed Rob Read and James Patterson, strengthening our all-round business expertise.

On a personal note, it never ceases to amaze me, how many people are prepared to give up their time and energy for Momentum. Of course, I'm talking about our wonderful volunteers.. This year we employed a Volunteer Co-ordinator, who has been very successful in achieving a significant upturn in numbers. Whether it is painting pebbles, helping in the office, being part of our Doorstep Santa or Grotto festivities, crewing the boat or acting as a trustee, volunteers give their precious time with tremendous enthusiasm and great ability. My sincere thanks go to everyone who has helped this year, it's been so appreciated.

As ever and quite rightly, the most important people are the children and the families that we support. The decision made to boost the number of Family Support staff to meet the very high demand from our supported hospitals has been successful and allowed us to support over 400 families during the year. I am delighted that the excellent service ratings achieved demonstrate the value Momentum brings to those families.

Again, my sincere thanks go to all of our amazing staff, volunteers, ambassadors and all of you who have given your time and money to Momentum Children's Charity.

Graham Smith
Chair of Trustees

Message from our CEO and Founder



What a year it has been for Momentum Children's Charity. I feel immensely proud of everything we achieved in our 19th year – a testament to the continued need for the services we provide for families facing the unimaginable. We reached some remarkable milestones last year both in the support we delivered and the fundraising we achieved.

The practical and emotional support provided by our Family Support Team remains at the forefront of what we do. We know that most parents experience an impact on their emotional health and wellbeing after receiving their child's diagnosis, leaving them feeling anxious, worried, and alone. Recognising this, we increased the number of hours our Family Support Team spent in hospitals by 56%. Our presence in Sussex has continued to grow, as does the need for our service. Almost a third of the families we supported last year were in Sussex – a huge increase on previous years.

Our bereavement service, Echoes, has shown tremendous growth and development. A generous three-year grant from St. James's Place has funded 40 hours a week of dedicated bereavement support. Our team has introduced new face-to-face events, helping families to connect with each other, and giving siblings and parents opportunities to talk about their loved ones and the treasured memories they have of them. Families can get involved in crafting activities, including creating beautiful memory bracelets. We are working closely with other organisations, to build on signposting and referral schemes, ensuring effective use of resources and maximising the support available to bereaved families.

We have introduced 'Momentum Outcomes', a programme which allows us to work with family members to assess the suitability and value of what we offer and to listen and adapt to their changing situation and to give us a better understand the impact of our support.

The new Paediatric Oncology unit at Kingston Hospital opened at the end of January – it is incredible and something I feel very honoured to be part of. Momentum funded the interior environment of the unit, including wall-art and sensory light panels. The result is a wonderfully calm and stimulating space for young patients, their families, and hospital staff too.

Income from fundraising and donations was at an all-time high – raising more than £1.1m. Our London Marathon team raised a record-breaking amount, and a unique and quite epic event took place when Sam Hall took on his Cycle4Sepp challenge last Spring, pedalling from Finland to England in memory of his young son, Sepp. The challenge raised more than £57,000 for Momentum and generated a huge amount of awareness.

The impact volunteers have on Momentum cannot be underestimated – we simply wouldn't be able to support our families in the ways we do without them. Supported by our new Volunteer Coordinator role, volunteers donated an incredible 2227 hours of their time to us last year.

On a personal level, it has been a very special year for me, as I received an OBE for services to young people with life-challenging conditions in the King's first Birthday Honours List. It was a true honour to be presented with my OBE by the Princess Royal, an experience that will be etched in my memory for years to come.

We were delighted to win the 'Best Charity' award at the Kingston Borough Business Awards last year – it means so much to see local communities valuing what we do.

Nobody should face the toughest challenges life can throw at you alone, and we are a helping hand for as long as needed. As we head into our 20th year and beyond, I hope we can continue to strive to be there for more families who are going through incredibly challenging times.

Bianca Effemey OBE
Founder CEO

Our Impact

Year ending 30 April 2024

Support for children and their families

1676

Children, siblings
and parents

419

Families with child
undergoing treatment

72% children with cancer

28% children with life-challenging
condition

766

Hospital visits

5718

Family interactions
in hospitals

4004

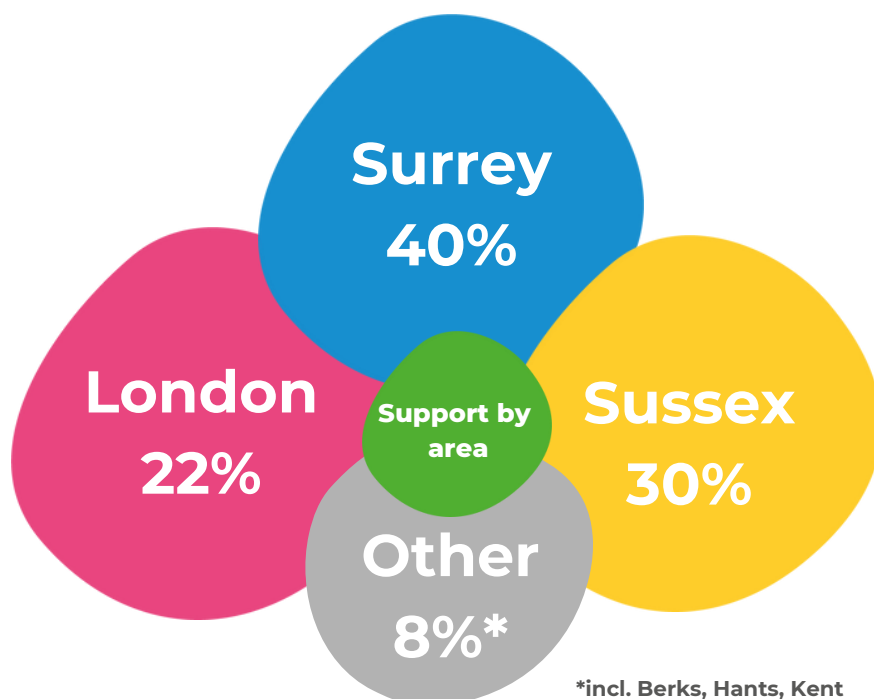
Support hours
in hospitals

3938

Support hours
in the community

660

Social work hours



*incl. Berks, Hants, Kent

“I can’t imagine having to navigate through this awful journey without the support from Momentum along the way.

“Having that contact and a base person to go to with queries or reassurance or to have sit with your child for a break was lifesaving for me.

Echoes

164

bereaved families

492

individuals

The Echoes Bereavement service has grown significantly in the last year. We stand side by side with families without time limit as they face the unimaginable. Our focus is on personal contact from our dedicated Bereavement Family Support Workers, as well as counselling, and peer to peer support opportunities for all family members.

This has included regular “Walk and Talks” for parents, facilitated group meetings, creative activities and workshops for Mums or Dads, and new sibling events for all ages.



Sometimes it can feel like people don't really understand what you're going through, or like you're burdening them. With the Echoes group, you don't feel that at all, you can share memories, feelings and experiences in a relaxed and open way.



A tragic event like this ripples out and people want to help, however they don't always know what to say. Momentum does and can.



Healthcare Professionals

Our close working with healthcare professionals across all our partner hospitals gives us a critical advantage in our ability to provide the right support for families at the right time.

100%

said that the Family Support Team had a positive impact on the emotional wellbeing of patients and their families when on the wards.



Many of the families are very anxious when on the ward, nursing staff cannot spend enough time with them so it is a great support for parents and helps nursing staff with their patients.



A stable point of contact for a family during a very difficult time.

Therapy Services

Children often struggle to deal with the emotional and physical changes they suddenly face after diagnosis, causing a decline in their mental wellbeing. Sibling and parent mental health can also be severely affected, impacting schooling, work, finances and relationships.

Our range of age-appropriate therapies for the whole family include for younger children creative therapy - music, art and play - to encourage them to communicate how they feel, when traditional talking therapies are not appropriate, and for older children and parents, specialist counselling and psychotherapy, providing strategies to help them cope more easily.



285

Creative Therapy sessions

218

Counselling sessions



Momentum has been there when I had nobody else, they cared when I thought I was alone.



Respite Services

Despite the challenges of the weather, numerous respite activities were enjoyed throughout the year. Our three holiday homes and “Moments on the river” riverboat gave families the chance to spend precious time together away from the stresses of hospital visits and treatment, whether for an afternoon, overnight or a weekend.



90
boat trips
for 423
individuals



When my son was in hospital I couldn't work which financially impacted our family as I have separated from his father. Being able to access a break/holiday and knowing I won't have to worry about the cost has been so helpful, and the time away from thinking about medical appointments and the hospital meant we could truly relax.



The cabin break was phenomenal. Having an opportunity like that meant we could make some positive memories when things had been so difficult in the first few months.

182
cabin breaks
for 771
individuals





After a bad few months it was great to see my daughter smile again.



185

handpainted individual pebbles

428

trips, treats, visits



He was delighted with his pebble, and shows it to everyone who visits!

Special Moments

After hospital visits and gruelling treatment, our special treats, trips and visits can offer families a few moments of delight. From Doorstep Santa and owl visits, a treat in the post with an advent calendar, to a family day out.



A memory my family will never forget.



They have made the darkest day seem a bit brighter. It has given all the kids something to look forward to and enjoy that takes their minds off cancer.



54

families received a
Doorstep Santa
visit

Thank you so soooo much for organising to have Santa and his elf visit us last weekend. It was the most wonderful experience and we all truly loved it. O's eyes nearly popped out of his head with happiness.

Our daughter is so poorly at the moment so we wouldn't have been able to take her to experience something like this, it was amazing and magical.

You get so much taken away and so many disappointments when your child/brother is going through treatment, so little gifts and Santa messages really cheer them up.



2227

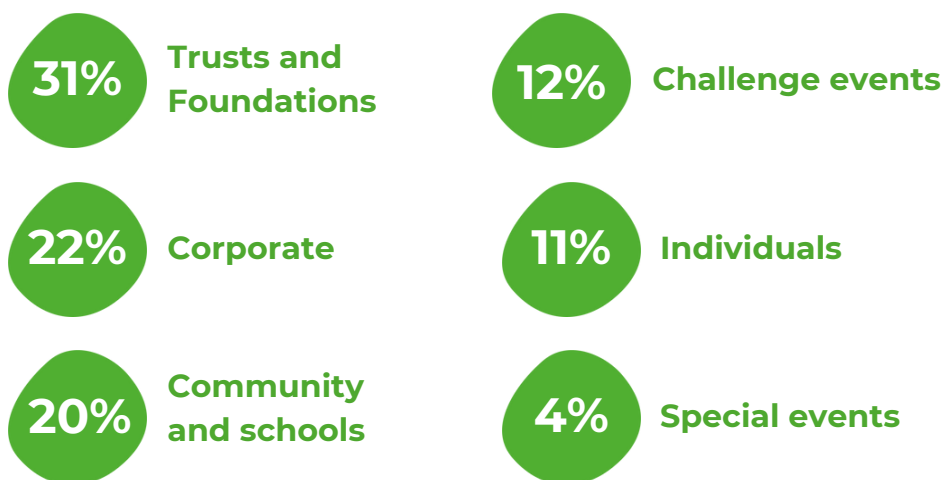
Volunteer
hours

On the boat, in our office, painting pebbles, at events, fundraising, donating their skills, and donning costumes.....

Volunteering at Momentum never feels like a chore because you are surrounded by amazing, caring people who all want to make a difference in any way they can – it genuinely feels like a family and that's what I think is so special.



How we fund our services



Corporate Fundraising

Our partnerships with Berkeley St Edward, Valero, Lendlease and Air Charter Service continued, and all supported us through their annual events and a variety of other fundraising activities. Although our partnership with Manulife ended at the end of December 2023, they supported us to the end with a Treasure Hunt and Quiz Night and their support of our matched giving campaign. While that relationship ended, we developed partnerships with other corporates across Surrey and are continuing to raise the profile of Momentum within the areas local to our partner hospitals. Our corporate supporters raised a fantastic £263,972 for Momentum this year.

The financial support our corporate partners provide is crucial but of equal importance is all the other ways in which they help. Local supporters ProNursing provided their premises for our Christmas Grotto enabling us to maximise fundraising potential, Colets Health & Fitness Club provided important meeting space, and Finyx Consulting offered their time and expertise through staff training and consultancy, support that is ongoing.

Our corporate supporters also supported us through volunteering – being elves at our Grotto, running stalls for us at craft fairs, cleaning our river boat and decorating it for Halloween, packing presents for our Doorstep Santa campaign and numerous other ways.

Challenge events

Between May 2023 and April 2024, an incredible 167 individuals took part in various sporting challenges for Momentum. The resulting Challenge Events annual income totalled an impressive £138,723. Whilst fundraising highlights came from the many unexpected and varied Own Place events, which always complement our regular pre-paid events, the TCS London Marathon in April 2024 was the undisputed star of the show raising a record breaking £74,156, thanks largely to two Momentum families' phenomenal fundraising.

How we fund our services

Trusts & Foundations

We were grateful for the support from over 40 charitable trusts and foundations this year, including our many loyal supporters, as well as new funders including the Manny Cussins Foundation and Hays Travel Foundation. They provided grants towards specific projects and services, as well as towards our general charitable activities.

Community

The continued support from the local community and schools, always amazes us. It was not just the funds raised that were impressive, but also the inventive methods used to gather them. Cycle for Sepp surpassed its £50,000 goal, marking a significant achievement despite an injury. We established a new partnership with the Royal Mid Surrey Golf Club, becoming their charity of the year for both the Men's and Women's teams and the 2023 pantomime collection at the Capital Theatre was a resounding success, raising an impressive £13,357. Our loyal supporters, Ann and Jeff Brown, held their annual Valentine's Day collection in memory of Kiera, which once again raised over £3,500. Schools efforts went far beyond our expectations, with Hampton School, Reed's School, Claremont and St. John's Leatherhead raising over £26,000.

Special events

Our 'Magic Moments' Christmas campaign, which was launched in October, once again brought joy and excitement. The campaign featured an online auction, a text raffle, a five-day Christmas grotto, and a delightful mix of carols and music. It truly set a magical tone for the holiday season.

The annual Golf Day attended by golf pro's and celebrities including Tom Holland, was a resounding success, raising £23,996. 'Mada Mia', a night of music, contributed £2,445 to our cause. Additionally, a comedy night featuring Chris McCausland and Romesh Ranganathan brought laughter and cheer, raising over £5,000.

Individual Giving

Every donation, regardless of its size, whether it's a one-time contribution, a regular gift, or a donation made in memory of a loved one, holds immeasurable value. In January, we unveiled our Tribute Fund film, a heartfelt project made possible by the Smith family who generously shared their personal story, and the exceptional pro bono support from BAFTA winners Darrell Macqueen. Regular contributions continue to be a crucial part of our fundraising efforts, providing us with a stable foundation to plan more effectively for the future.



Structure, governance and management

Governing document

On 30th June 2022 we converted from a Trust (Reg 1106677) to a Charitable Incorporated Organisation (Reg 1195373).

Trustees

The charity's Trustees are not remunerated but their expenses are reimbursed in accordance with Momentum's expenses policy. Trustees are recruited through an open selection process and receive an induction on appointment.

Staff and volunteers

Our team shares a huge passion for the work we do, and as we are a small organisation every team member sees first-hand the difference we make to families. At the year end, we have 28 employees and 3 consultants. This equates to 11 full-time equivalent staff (FTE) in family support roles, 8 FTE in fundraising and marketing roles, and 2 FTE in operational roles. We also have around 100 regular volunteers from the local community who support us in a range of roles including service delivery, office work and raising awareness.

Risk management

The Trustees have a duty to identify and review the risks to which the charity is exposed and to ensure appropriate controls are in place to provide reasonable assurance against fraud and error.

Financial policy

The charity has a written financial policy that sets out the procedures for the day-to-day management of the charity's finances. This is reviewed annually.

Safeguarding

The charity is fully committed to safeguarding and promoting the welfare of all children and vulnerable adults. We have a comprehensive safeguarding policy which outlines these responsibilities and those of the Designated Safeguarding Lead (DSL). It also outlines the procedures to be taken when a child or vulnerable adult may be identified to be at risk of harm, or may require additional support to ensure they reach their potential. The policy is reviewed and updated annually.

Diversity and Inclusion

We actively support diversity and inclusion and ensure that all our employees are valued and treated with dignity and respect. We have made developments to our recruitment process with the introduction of an online application form with Equality, Diversity and Inclusion (EDI) monitoring questions and improvements to our job advertisements which include more inclusive language and reduction of the essential specification criteria. Our formal Equality, Diversity and Inclusion Policy is implemented in accordance with the appropriate statutory requirements and ensures that no service user, job applicant, employee or worker is discriminated against either directly or indirectly on the grounds of age, disability, gender reassignment, marriage and civil partnership, pregnancy or maternity, race, religion or belief, sex or sexual orientation.

Trustees induction, training and insurance

New Trustees receive information on the charity's history, governing document, finances, activities, objectives, and their role and responsibilities. The induction includes meetings with other Trustees, the Chief Executive, and Senior Leadership Team. Training needs are identified during recruitment and provided as needed. The charity holds trustee indemnity insurance to protect its Trustees against personal liability arising from their duties in managing the charity, provided they have acted in good faith and in accordance with their responsibilities. This insurance ensures that the Trustees are safeguarded from potential legal claims, allowing them to carry out their roles with confidence and in the best interest of the charity.

Remuneration of staff and key management personnel

The Chief Executive and Director of Finance and Operations review staff, including key management personnel, with pay based on industry benchmarks, professional experience, performance, and the charity's long-term needs. To avoid conflicts of interest, the Trustees set the salaries of the Chief Executive and Director of Finance and Operations, following the same process used for the rest of the team. Pay reviews are conducted annually, with mid-year reviews as needed.

Financial Review

We are pleased to report that the financial year 2023/24 has been marked by significant income growth, whilst maintaining a similar level of spending.

This year, our total income increased by 15%, rising from £1,033,143 in the previous year, to £1,192,666 in the current year. This growth was primarily driven by Community Fundraising, which saw a notable rise of 70%, reflecting strong support from our community and new fundraising initiatives. We also secured additional grant funding totalling £125,489, a testament to our impactful programs and robust grant applications.

Despite the significant increase in income, we have managed to maintain a similar level of expenditure, with total spending remaining at £1,122,377 in the current year, closely aligned with the previous year's £1,148,416.

The combination of increased income and stable expenditure has resulted in an improved return on investment, ensuring a larger proportion of our income is directed towards our charitable objects and enhancing our overall impact.

As a result, our financial position remains robust. We have achieved a surplus of £70,289, which will be strategically reinvested into expanding our services over the next three years. We extend our heartfelt gratitude to all our donors, volunteers and partners for their unwavering support. Your contributions are vital to our continued success and the fulfilment of our mission.

Reserves Policy

Introduction

Momentum Children's Charity exists to support children with cancer or life-challenging conditions, and their families. When a family is referred to us, we make a commitment to provide support and services to children, siblings, and parents for as long as is needed. Our reserves policy has therefore been set to reflect this commitment to the community we support, and – in the unlikely event that we should cease to operate – to ensure families would not experience a sudden or immediate change to the care we provide. In addition, this policy considers possible risks to our charity's operations and how we safeguard against these.

Definitions

In accordance with Charity Commission guidance:

- Free reserves are uncommitted reserves freely available, which exclude restricted and designated funds and amounts invested in tangible fixed assets.
- Designated funds arise when the Trustees set aside unrestricted funds for specific purposes.
- Restricted funds arise when conditions are imposed by the donor, or by the specific terms of appeal and can only be spent on the activities specified.

Free reserves

During the year, The Board of Trustees agreed to adjust the charity's reserves policy down in support of the investment required to deliver the 2024 to 2027 strategy. Trustees agreed to hold four to seven months' (2023 - six to nine months) operating costs (excluding hospital refurbishments which would only be undertaken if restricted funding had been secured) to ensure the sustainability of support services for seriously ill children and their families, as well as essential costs required to support the delivery of this service. The Trustees consider the free reserves policy annually.

Currently £636,658 is held, the equivalent of seven months operating costs, showing that the charity is able to sustain itself in the short to medium term.

Designated funds

The Trustees have not designated any funds in 2023/24.

Restricted funds

Restricted funds amounted to £208,586, of which £122,134 related to a portion of the charity's fixed assets, including three holiday homes and the riverboat.

All four assets are available for family respite holidays and trips, through our respite breaks programme. The remaining £86,452 is being held to cover the costs of activities scheduled for delivery in 2024/25.

Investment policy and performance

The trustees have adopted a conservative investment strategy aimed at protecting the charity's reserves while seeking an appropriate return, considering the associated risks. During the year, they approved changes to the charity's banking arrangements, allowing surplus funds to be placed in a range of short-term deposits. This decision was intended to generate an additional £10,000 in interest for 2024. The income from these investments surpassed expectations, bringing in £24,165.

Strategic goals 2024 to 2027

As we mark 20 years of supporting families in June 2024, development of this strategy has given us the opportunity to reflect on our work to date. We have helped thousands of local families and launched new programmes and services including bereavement support, hospital refurbishments, in hospital distraction activities including massage, music and character events, educational support and respite breaks. We have branched into other areas and partnered with an increasing number of NHS hospitals. We have faced challenges and learnt from mistakes.

For the next three years our focus will be on:

- Enhanced family support resources in our hospitals to meet existing and anticipated future demand, particularly in Sussex.
- Evolving the family support model to provide separate hospital and community focused teams.
- Collaboration with other charities to take over the provision of in hospital distraction activities.
- Growing specialist social work support and bereavement services.
- Increase growth of volunteer pool to support the community including manned helplines.

With input from our team, children and families, our network of therapy providers, our partners in local NHS hospitals, and the wider community, we have identified six key strategic goals:

1. Improve Accessibility
2. Develop Our Specialist Services
3. Demonstrate Impact
4. Collaborate and Consolidate
5. Build our Team
6. Grow Income

Each of these goals is supported by a detailed operational plan. We will regularly evaluate and measure our work, communicating updates in our Impact Report and Trustees Annual Report. Children and families are at the heart of all we do, and we will continue to listen to their voices to maximise our impact.

Statement of Trustees' responsibilities in relation to the financial statements

The Trustees are responsible for preparing the Trustees' report and the financial statements in accordance with applicable law and United Kingdom Accounting Standards. The law applicable to charities in England and Wales requires the Trustees to prepare financial statements for each financial year which give a true and fair view of the state of affairs of the charity and of the incoming resources and application of resources of the charity for that period. In preparing these financial statements, the Trustees are required to:

- Select suitable accounting policies and then apply them consistently.
- Observe the methods and principles of the Charities SORP.
- Make judgements and accounting estimates that are reasonable and prudent.
- State whether applicable accounting standards have been followed, subject to any departures disclosed and explained in the financial statements.
- Prepare the financial statements on the going concern basis unless it is inappropriate to presume that the charity will continue in business.

The Trustees are responsible for keeping accounting records which disclose with reasonable accuracy the financial position of the charity and enable them to ensure that the financial statements comply with the Charities Act 2011, the Charity (Accounts and Reports) Regulations 2008 and the provisions of the trust deed. They are also responsible for safeguarding the assets of the charity and hence for taking reasonable steps for the prevention and detection of fraud and other irregularities.

Approved by order of the Board of Trustees on 2nd December 2024 and signed on its behalf by



Graham Smith, Chair of Trustees

Independent Auditor's Report

To the Trustees of Momentum Children's Charity For the Year Ended 30th April 2024

Opinion

We have audited the financial statements of Momentum Children's Charity (the 'charity') for the year ended 30 April 2024 which comprise the statement of financial activities, the balance sheet, the statement of cash flows and notes to the financial statements, including significant accounting policies. The financial reporting framework that has been applied in their preparation is applicable law and United Kingdom Accounting Standards, including Financial Reporting Standard 102 The Financial Reporting Standard applicable in the UK and Republic of Ireland (United Kingdom Generally Accepted Accounting Practice).

In our opinion the financial statements:

- Give a true and fair view of the state of the charity's affairs as at 30 April 2024 and of its incoming resources and application of resources, for the year then ended;
- Have been properly prepared in accordance with United Kingdom Generally Accepted Accounting Practice; and
- Have been prepared in accordance with the requirements of the Charities Act 2011.

Basis for opinion

We conducted our audit in accordance with International Standards on Auditing (UK) (ISAs (UK)) and applicable law. Our responsibilities under those standards are further described in the Auditor's responsibilities for the audit of the financial statements section of our report. We are independent of the charity in accordance with the ethical requirements that are relevant to our audit of the financial statements in the UK, including the FRC's Ethical Standard, and we have fulfilled our other ethical responsibilities in accordance with these requirements. We believe that the audit evidence we have obtained is sufficient and appropriate to provide a basis for our opinion.

Conclusions relating to going concern

In auditing the financial statements, we have concluded that the Trustees use of the going concern basis of accounting in the preparation of the financial statements is appropriate.

Based on the work we have performed, we have not identified any material uncertainties relating to events or conditions that, individually or collectively, may cast significant doubt on the charity's ability to continue as a going concern for a period of at least twelve months from when the financial statements are authorised for issue.

Our responsibilities and the responsibilities of the Trustees with respect to going concern are described in the relevant sections of this report.

Other information

The other information comprises the information included in the annual report other than the financial statements and our auditor's report thereon. The Trustees are responsible for the other information contained within the annual report. Our opinion on the financial statements does not cover the other information and we do not express any form of assurance conclusion thereon. Our responsibility is to read the other information and, in doing so, consider whether the other information is materially inconsistent with the financial statements or our knowledge obtained in the course of the audit, or otherwise appears to be materially misstated. If we identify such material inconsistencies or apparent material misstatements, we are required to determine whether this gives rise to a material misstatement in the financial statements themselves. If, based on the work we have performed, we conclude that there is a material misstatement of this other information, we are required to report that fact.

We have nothing to report in this regard.

Independent Auditor's Report

Matters on which we are required to report by exception

We have nothing to report in respect of the following matters in relation to which the Charities (Accounts and Reports) Regulations 2008 require us to report to you if, in our opinion:

- The information given in the financial statements is inconsistent in any material respect with the trustees report; or
- Sufficient accounting records have not been kept; or
- The financial statements are not in agreement with the accounting records; or
- We have not received all the information and explanations we require for our audit.

Responsibilities of Trustees

As explained more fully in the statement of Trustees responsibilities, the Trustees are responsible for the preparation of the financial statements and for being satisfied that they give a true and fair view, and for such internal control as the trustees determine is necessary to enable the preparation of financial statements that are free from material misstatement, whether due to fraud or error. In preparing the financial statements, the Trustees are responsible for assessing the charity's ability to continue as a going concern, disclosing, as applicable, matters related to going concern and using the going concern basis of accounting unless the Trustees either intend to cease operations, or have no realistic alternative but to do so.

Auditor's responsibilities for the audit of the financial statements

We have been appointed as auditor under section 144 of the Charities Act 2011 and report in accordance with the Act and relevant regulations made or having effect thereunder.

Our objectives are to obtain reasonable assurance about whether the financial statements as a whole are free from material misstatement, whether due to fraud or error, and to issue an auditor's report that includes our opinion. Reasonable assurance is a high level of assurance, but is not a guarantee that an audit conducted in accordance with ISAs (UK) will always detect a material misstatement when it exists. Misstatements can arise from fraud or error and are considered material if, individually or in the aggregate, they could reasonably be expected to influence the economic decisions of users taken on the basis of these financial statements.

Our approach to identifying and assessing the risks of material misstatement in respect of irregularities, including fraud and non-compliance with laws and regulations, was as follows:

- The engagement partner ensured that the engagement team collectively had the appropriate competence, capabilities and skills to identify or recognise non-compliance with applicable laws and regulations;
- We identified the laws and regulations applicable to the charity through discussions with trustees and other management, and from our knowledge and experience of the charity sector;
- We focused on specific laws and regulations which we considered may have a direct material effect on the financial statements or the operations of the charity, the Charities Act 2011, taxation legislation, data protection, employment, environmental and health and safety legislation;
- We assessed the extent of compliance with the laws and regulations identified above through making enquiries of management; and
- Identified laws and regulations were communicated within the audit team regularly and the team remained alert to instances of non-compliance throughout the audit.

We assessed the susceptibility of the company's financial statements to material misstatement, including obtaining an understanding of how fraud might occur, by:

- Making enquiries of management as to where they considered there was susceptibility to fraud, their knowledge of actual, suspected and alleged fraud;
- Considering the internal controls in place to mitigate risks of fraud and non-compliance with laws and regulations; and testing controls with walk through procedures and substantive transaction testing;

Independent Auditor's Report

To address the risk of fraud through management bias and override of controls, we:

- Performed analytical procedures to identify any unusual or unexpected relationships;
- Tested journal entries to identify unusual transactions;
- Assessed whether judgements and assumptions made in determining any accounting estimates were indicative of potential bias;
- Investigated the rationale behind significant or unusual transactions; and

In response to the risk of irregularities and non-compliance with laws and regulations, we designed procedures which included, but were not limited to:

- Agreeing financial statement disclosures to underlying supporting documentation;
- Reading the minutes of meetings of those charged with governance;
- Enquiring of management as to actual and potential litigation and claims;
- Reviewing correspondence with HMRC and relevant regulators such as the Charity Commission.

The extent to which our procedures are capable of detecting irregularities, including fraud, is detailed below.

There are inherent limitations in our audit procedures described above. The more removed that laws and regulations are from financial transactions, the less likely it is that we would become aware of non-compliance. Auditing standards also limit the audit procedures required to identify non-compliance with laws and regulations to enquiry of the directors and other management and the inspection of regulatory and legal correspondence, if any.

Material misstatements that arise due to fraud can be harder to detect than those that arise from error as they may involve deliberate concealment or collusion.

A further description of our responsibilities for the audit of the financial statements is located on the Financial Reporting Council's website at: <http://www.frc.org.uk/auditorsresponsibilities>. This description forms part of our auditor's report.


Other matters

Your attention is drawn to the fact that the charity has prepared financial statements in accordance with "Accounting and Reporting by Charities: Statement of Recommended Practice applicable to charities preparing their accounts in accordance with the Financial Reporting Standard applicable in the UK and Republic of Ireland (FRS 102)" (as amended) in preference to the Accounting and Reporting by Charities: Statement of Recommended Practice issued on 1 April 2005 which is referred to in the extant regulations but has now been withdrawn.

This has been done in order for the financial statements to provide a true and fair view in accordance with current Generally Accepted Accounting Practice.

Use of our report

This report is made solely to the charity's members, as a body, in accordance with section 391 of the Companies Act 2014. Our audit work has been undertaken so that we might state to the charity's members those matters we are required to state to them in an auditor's report and for no other purpose. To the fullest extent permitted by law, we do not accept or assume responsibility to anyone other than the charity and the charity's members as a body, for our audit work, for this report, or for the opinions we have formed.



2nd December 2024

F J Wilde FCCA MBA DChA (Senior Statutory Auditor)

Warner Wilde, Chartered Certified Accountants, Statutory Auditor 4 Marigold Drive, Bisley, Surrey GU24 9SF
Warner Wilde is eligible for appointment as auditor of the charity by virtue of its eligibility for appointment as auditor of a company under section 1212 of the Companies Act 2006.

Statement of Financial Activities including Income and Expenditure Accounts

For the year ended 30th April 2024

Current financial year

	NOTES	UNRESTRICTED FUNDS £	RESTRICTED FUNDS £	2024 £	2023 £
INCOME FROM:					
Donations and legacies	3	804,963	-	804,963	734,563
Charitable activities	4	-	323,630	323,630	257,241
Other trading activities	5	39,908	-	39,908	38,824
Investment income	6	24,165	-	24,165	2,515
Total income		869,036	323,630	1,192,666	1,033,143
EXPENDITURE ON:					
Raising funds	7	188,518	-	188,518	220,005
Charitable activities	8	597,891	301,812	899,703	896,025
Cost of other trading activities	9	22,497	-	22,497	21,249
Governance costs	10	11,659	-	11,659	11,137
Total expenditure		820,565	301,812	1,122,377	1,148,416
NET (OUTGOING)/INCOMING RESOURCES		48,471	21,818	70,289	(115,273)
Reconciliation of funds					
Fund balances at 1 May 2023		771,528	186,769	958,297	1,673,570
Fund balances at 30 April 2024		819,999	208,587	1,028,586	958,297

The statement of financial activities includes all gains and losses recognised in the year.

All income and expenditure derive from continuing activities.

Statement of Financial Activities including Income and Expenditure Accounts

For the year ended 30th April 2024

Prior financial year

	NOTES	UNRESTRICTED FUNDS £	DESIGNATED FUNDS £	RESTRICTED FUNDS £	2023 £
INCOME FROM:					
Donations and legacies	3	734,563	-	-	734,563
Charitable activities	4	-	-	257,241	257,241
Other trading activities	5	38,824	-	-	38,824
Investment income	6	2,515	-	-	2,515
Total income		775,902	-	257,241	1,033,143
EXPENDITURE ON:					
Raising funds	7	220,005	-	-	220,005
Charitable activities	8	504,241	-	391,784	896,025
Cost of other trading activities	9	21,249	-	-	21,249
Governance costs	10	11,137	-	-	11,137
Total expenditure		756,632	-	391,784	1,148,416
NET (OUTGOING)/INCOMING RESOURCES		19,270	-	(134,543)	(115,273)
Other recognised gains					
Revaluation of tangible fixed assets		-	-	-	-
Transfers between funds		61,057	(61,057)	-	-
Net movement in funds		80,327	(61,057)	(134,543)	(115,273)
Fund balances at 1 May 2022		691,201	61,057	321,312	1,073,570
Fund balances at 30 April 2023		771,528	-	186,769	958,297

Balance Sheet

At 30th April 2024

	NOTES	2024 £	2023 £
FIXED ASSETS			
Tangible assets - restricted		122,134	123,893
Tangible assets - unrestricted		183,341	203,466
Total	13	305,475	327,359
CURRENT ASSETS			
Debtors	14	76,033	71,843
Cash at bank and in hand		160,322	600,394
Investments		532,170	-
Total		768,525	672,236
CREDITORS Amounts falling due within one year	15	45,414	41,299
NET CURRENT ASSETS		723,111	630,938
TOTAL ASSETS LESS CURRENT LIABILITIES		1,028,586	958,297
CAPITAL AND RESERVED FUNDS			
Restricted funds	19	208,587	186,769
Unrestricted funds - designated		819,999	771,528
Total		1,028,586	958,296

The financial statements were approved by the trustees on 2nd December 2024 and signed on its behalf by



Graham Smith (Chair).

Statement of Cash Flows

For the year ended 30th April 2024

	NOTES	£	2024 £	£	2023 £
CASH FLOWS FROM OPERATING ACTIVITIES					
Cash (absorbed by)/generated from operations	18		71,570		(69,152)
INVESTING ACTIVITIES					
Purchase of tangible fixed assets		(3,635)		(5,871)	
Purchase of current asset investments		(532,168)			
Investment income received		24,165		2,515	
Net cash used in investing activities			(511,638)		(3,356)
Net cash used in financing activities			-		-
Net (decrease)/increase in cash and cash equivalents			(440,068)		(72,508)
Cash and cash equivalents at beginning of year			600,394		672,902
Cash and cash equivalents at the end of the year			160,326		600,394

Notes to the Financial Statements

For the year ended 30th April 2024

1. Accounting Policies

Charity information

Momentum Children's Charity is a Charitable Incorporated Organisation.

1.1 Accounting convention

The financial statements have been prepared in accordance with the charity's governing document, the Charities Act 2011, FRS 102 "The Financial Reporting Standard applicable in the UK and Republic of Ireland" ("FRS 102") and the Charities SORP "Accounting and Reporting by Charities: Statement of Recommended Practice applicable to charities preparing their accounts in accordance with the Financial Reporting Standard applicable in the UK and Republic of Ireland (FRS 102)" (effective 1 January 2019).

The charity is a Public Benefit Entity as defined by FRS 102. The financial statements have departed from the Charities (Accounts and Reports) Regulations 2008 only to the extent required to provide a true and fair view. This departure has involved following the Statement of Recommended Practice for charities applying FRS 102 rather than the version of the Statement of Recommended Practice, which is referred to in the Regulations, but which has since been withdrawn. The financial statements are prepared in sterling, which is the functional currency of the charity. Monetary amounts in these financial statements are rounded to the nearest £.

The financial statements have been prepared under the historical cost convention.

1.2 Going concern

At the time of approving the financial statements, the Trustees have a reasonable expectation that the charity has adequate resources to continue in operational existence for the foreseeable future. Thus, the Trustees continue to adopt the going concern basis of accounting in preparing the financial statements.

1.3 Charitable funds

Unrestricted funds are available for use at the discretion of the trustees in furtherance of their charitable objectives. Restricted funds are subject to specific conditions by donors as to how they may be used. The purposes and uses of the restricted funds are set out in the notes to the financial statements. Endowment funds are subject to specific conditions by donors that the capital must be maintained by the charity.

1.4 Income

Income is recognised when the charity is legally entitled to it after any performance conditions have been met, the amounts can be measured reliably, and it is probable that income will be received. Cash donations are recognised on receipt. Other donations are recognised once the charity has been notified of the donation unless performance conditions require deferral of the amount. Income tax recoverable in relation to donations received under Gift Aid or deeds of covenant is recognised at the time of the donation. Income from charitable activities for generating funds includes income earned from fundraising events and trading activities to raise funds for the charity. Income is received in exchange for supplying goods and services to raise funds and is recognised when entitlement has incurred.

1.5 Expenditure

Expenditure is recognised once there is a legal or constructive obligation to transfer economic benefit to a third party, it is probable that a transfer of economic benefits will be required in settlement, and the amount of the obligation can be measured reliably. Expenditure is classified by activity. The costs of each activity are made up of the total of direct costs and shared costs, including support costs involved in undertaking each activity. Direct costs attributable to a single activity are allocated directly to that activity. Shared costs which contribute to more than one activity and support costs which are not attributable to a single activity are apportioned between those activities on a basis consistent with the use of resources. Central staff costs are allocated based on time spent, and depreciation charges are allocated on the portion of the asset's use.

Notes to the Financial Statements

1.6 Tangible fixed assets

Tangible fixed assets are initially measured at cost and subsequently measured at cost or valuation, net of depreciation and any impairment losses. Depreciation is recognised to write off the cost or valuation of assets less their residual values over their useful lives on the following bases:

- Short leasehold - over the duration of the licence agreement (12,25 and 30 years respectively)
- Fixtures and fittings – 5 years (straight line)
- Computers – 3 years (straight line)
- Plant and machinery - 5 years (straight line)

The gain or loss arising on the disposal of an asset is determined as the difference between the sale proceeds and the carrying value of the asset and is recognised in the statement of financial activities.

1.7 Impairment of fixed assets

At each reporting end date, the charity reviews the carrying amounts of its tangible assets to determine whether there is any indication that those assets have suffered an impairment loss. If any such indication exists, the recoverable amount of the asset is estimated in order to determine the extent of the impairment loss (if any).

1.8 Cash and cash equivalents

Cash and cash equivalents include cash in hand, deposits held at call with banks, other short-term liquid investments with original maturities of three months or less, and bank overdrafts. Bank overdrafts are shown within borrowings in current liabilities.

1.9 Financial instruments

The charity has elected to apply the provisions of Section 11 'Basic Financial Instruments' and Section 12 'Other Financial Instruments Issues' of FRS 102 to all of its financial instruments. Financial instruments are recognised in the charity's balance sheet when the charity becomes party to the contractual provisions of the instrument. Financial assets and liabilities are offset, with the net amounts presented in the financial statements, when there is a legally enforceable right to set off the recognised amounts and there is an intention to settle on a net basis or to realise the asset and settle the liability simultaneously.

Basic financial assets

Basic financial assets, which include debtors and cash and bank balances, are initially measured at transaction price including transaction costs and are subsequently carried at amortised cost using the effective interest method unless the arrangement constitutes a financing transaction, where the transaction is measured at the present value of the future receipts discounted at a market rate of interest. Financial assets classified as receivable within one year are not amortised.

Basic financial liabilities

Basic financial liabilities, including creditors and bank loans are initially recognised at transaction price unless the arrangement constitutes a financing transaction, where the debt instrument is measured at the present value of the future payments discounted at a market rate of interest. Financial liabilities classified as payable within one year are not amortised. Debt instruments are subsequently carried at amortised cost, using the effective interest rate method. Trade creditors are obligations to pay for goods or services that have been acquired in the ordinary course of operations from suppliers. Amounts payable are classified as current liabilities if payment is due within one year or less. If not, they are presented as non-current liabilities. Trade creditors are recognised initially at transaction price and subsequently measured at amortised cost using the effective interest method.

Derecognition of financial liabilities

Financial liabilities are derecognised when the charity's contractual obligations expire or are discharged or cancelled.

1.10 Employee benefits

The cost of any unused holiday entitlement is recognised in the period in which the employee's services are received. Termination benefits are recognised immediately as an expense when the charity is demonstrably committed to terminate the employment of an employee or to provide termination benefits.

1.11 Retirement benefits

Payments to defined contribution retirement benefit schemes are charged as an expense as they fall due.

Notes to the Financial Statements

2. Critical accounting estimates and judgements

In the application of the charity's accounting policies, the trustees are required to make judgements, estimates and assumptions about the carrying amount of assets and liabilities that are not readily apparent from other sources. The estimates and associated assumptions are based on historical experience and other factors that are considered to be relevant. Actual results may differ from these estimates. The estimates and underlying assumptions are reviewed on an ongoing basis. Revisions to accounting estimates are recognised in the period in which the estimate is revised where the revision affects only that period, or in the period of the revision and future periods where the revision affects both current and future periods.

3. Donations and legacies – unrestricted

	2024 £	2023 £
Individual donations	129,147	150,228
Community	230,803	135,804
Corporates	259,847	286,516
Challenge events	138,723	144,015
Trusts and foundation	46,443	18,000
Total	804,963	734,563

4. Charitable activities: performance related (restricted) grants

	2024 £	2023 £
Individual donations	-	16,710
Community	1,912	12,377
Corporates	4,125	6,607
Trusts and foundation	317,593	221,547
Total	323,630	257,241

5. Other trading activities

	2024 £	2023 £
Fundraising events	39,841	38,332
Merchandise sales	67	492
Total	39,908	38,824

Notes to the Financial Statements

6. Investment income

	2024 £	2023 £
Deposit	24,165	2,515

7. Expenditure on raising funds

	2024 £	2023 £
Individual donations	43,884	37,300
Community	37,012	46,635
Corporates	75,349	54,613
Challenge events	32,273	81,457
Total	188,518	220,005

8. Expenditure on charitable activities

	UNRESTRICTED FUNDS £	RESTRICTED FUNDS £	2024 £	2023 £
Provision of services to support patients and families	174,781	260,039	434,820	430,119
Enhancing the healing environment	2,414	32,314	34,728	68,623
Running costs of family respite breaks	65,069	-	65,069	58,284
Freelance cost for grant applications	55,185	-	55,185	34,227
Short leasehold depreciation	11,899	1,760	13,659	19,451
Fixtures and fittings/computer depreciation	11,861	-	11,861	4,858
Marketing costs	110,162	-	110,162	103,389
Office administration, management and finance	133,659	-	133,659	76,805
Organisational development	-	7,700	7,700	65,179
Premises and other related costs	31,704	-	31,704	34,827
Bank charges	1,156	-	1,156	263
Total	597,890	301,813	899,703	896,025

Notes to the Financial Statements

9. Expenditure on other trading activities

	UNRESTRICTED FUNDS £	2024 £	2023 £
Fundraising events	22,497	22,497	20,667
Merchandise sales	-	-	582
Total	22,497	22,497	21,249

10. Governance costs

	UNRESTRICTED FUNDS £	RESTRICTED FUNDS £	2024 £	2023 £
Audit fees	9,598	-	9,598	8,712
Legal costs	2,061	-	2,061	2,425
Total	11,659	-	11,659	11,137

11. Trustees

During the year, no Trustee (or any persons connected with them) received any remuneration or benefits or were reimbursed for expenses paid on behalf of the charity (2023 nil).

12. Employees

	FAMILY SUPPORT £	FUNDRAISING £	MARKETING £	OFFICE AND ADMIN STAFF £	2024 £	2023 £
Wages and salaries	331,781	147,221	84,807	84,642	648,451	565,067
Social security costs	26,456	13,893	7,425	6,022	53,796	50,697
Pension contributions	13,914	4,966	3,268	3,225	25,373	19,181
Total	372,151	166,080	95,500	93,889	727,620	634,945

The average number of full time equivalent staff during the year was: 19 17

The number of employees earning between £80,000 - £90,000 were: 1 1

Aggregate employee benefits of key management personnel £107k (2023: £115k).

Notes to the Financial Statements

13. Tangible fixed assets

	HOLIDAY HOME (short leasehold) £	PLANT AND MACHINERY £	FIXTURES AND FITTINGS £	COMPUTER EQUIPMENT £	TOTAL £
COST					
At 1st May 2023	360,073	52,868	11,243	11,593	435,777
Additions	-	-	-	3,635	3,635
At 30th April 2024	360,073	52,868	11,243	15,228	439,412
DEPRECIATION AND IMPAIRMENT					
At 1st May 2023	92,552	3,925	7,558	4,382	108,417
Charge for the year	16,674	3,351	1,228	4,267	25,520
At 30th April 2024	109,226	7,276	8,786	8,649	133,937
CARRYING AMOUNT					
At 30th April 2024	250,847	45,592	2,457	6,579	305,475
At 30th April 2023	267,521	48,943	3,684	7,211	327,359

14. Debtors: Amounts falling due within one year

	2024 £	2023 £
Trade debtors	5,869	2,000
Other debtors	8,894	10,000
Prepayments	39,548	35,832
Accrued income	21,721	24,011
Total	76,032	71,843

15. Creditors: Amounts falling due within one year

	NOTES	2024 £	2023 £
Audit fees		7,800	7,800
Deferred income	16	8,200	10,098
Accrued expenses		5,935	2,235
Taxes and social security		13,977	13,334
Creditors		9,503	7,832
Total		45,415	41,299

Notes to the Financial Statements

16. Deferred income

Deferred income is included in the financial statements as follows:

	2024 £	2023 £
Deferred income is included within:		
Current liabilities	8,200	10,098
Movements in the year:		
Deferred income at 1 May 2023	10,098	10,487
Released from previous periods	(10,098)	(10,487)
Resources deferred in the year	8,200	(10,098)
Deferred income at 30 April 2024	8,200	10,098

17. Retirement benefit schemes

Defined contribution schemes

The charity operates a defined contribution scheme for all qualifying employees. The assets of the scheme are held separately from those of the charity in an independently administered fund.

Contributions to defined contribution schemes amounted to £25,373 (2023: £19,181).

18. Cash generated from operations

	2024 £	2023 £
(Deficit)/surplus for the year	70,289	(115,273)
Adjustments for:		
Investment income recognised in statement of financial activities	(24,165)	(2,515)
Depreciation and impairment of tangible fixed assets	25,521	24,309
Movements in working capital		
Decrease/(increase) in debtors	(4,190)	29,943
(Decrease) in creditors	(5,227)	(5,227)
(Decrease) in deferred income	(389)	(389)
Cash (absorbed by)/generated from operations	61,839	69,152

Notes to the Financial Statements

19. Movement in funds

	2023 £	INCOMING RESOURCES £	RESOURCES EXPENDED £	FIXED ASSETS DEPRECIATION £	TRANSFERS £	2024 £
Unrestricted fund						
General fund	771,528	869,036	796,804	23,761	-	819,999
Total	771,528	869,036	796,804	23,761	-	819,999
Restricted fund						
Family support activities	132,321	321,718	260,039	1,760	-	192,240
Hospital projects	37,127	1,912	32,314	-	-	6,725
Organisational development	17,321	-	7,700	-	-	9,621
Total	186,769	323,630	300,053	1,760	-	208,586
Total funds	958,297	1,192,666	1,096,857	25,521	-	1,028,585

Analysis of net assets between funds

Fund balances at 30 April 2024 are represented by:

	UNRESTRICTED FUNDS GENERAL 2024 £	RESTRICTED FUNDS 2024 £	TOTAL 2024 £	UNRESTRICTED FUNDS GENERAL 2023 £	RESTRICTED FUNDS 2023 £	TOTAL 2023 £
Tangible assets	183,341	122,134	305,475	203,466	123,893	327,359
Current assets/ (liabilities)	1,100,307	86,452	723,111	568,062	62,876	630,938
Total	1,283,648	208,586	1,028,586	771,528	186,769	958,297

20. Related party transactions

For the year ended 30th April 2024, the Founder and Chief Executive Officer and Director of Finance and Operations were identified as related parties.

The aggregate donations received from the Trustees in the year were £1,433 (2023 - £663). There were no other transactions with related parties for the year ended 30th April 2024.

21. Analysis of changes in net funds

The charity had no debt during the year.

Reference and administrative details

Registered charity number

1195373

Principal address

11a Creek Road,
East Molesey,
Surrey,
KT8 9BE

Founders

- Bianca Effemey (Chief Executive)
- Alison Trigg
- Jacqui Coppellotti

Trustees

The Trustees who have served during the year and since the year end were as follows:

- Graham Smith (Chair of Trustees and Treasurer)
- Christian Butter
- Mario Bodini (Deputy Chair)
- James Conway
- Victor De Cruz
- Dr Kate Irwin
- Fiona Loveless
- Kieron Lynch
- James Patterson – appointed September 2023
- Robert Read – appointed June 2023
- Michele Settle
- Vanessa Walters

Auditors

F J Wilde FCCA MBA DChA
Warner Wilde
4 Marigold Drive
Bisley
Surrey
GU24 9SF

Bankers

HSBC
1 Centenary Square
Birmingham
B1 1HQ



020 8974 5931 | info@momentumcharity.org

www.momentumcharity.org

11a Creek Road, East Molesey, KT8 9BE. Registered charity: 1195373



Registered with
**FUNDRAISING
REGULATOR**