

CREATIVE CRAWLEY CIO

Report of the Trustees year
ending 31st March 2023

Objectives

Achievements &
Performance

Financial Review

Staff, Governance
& Management

Future Plans

CREATIVE
CRAWLEY

The trustees present their report and financial statements for the period ended 31 March 2023. The financial statements have been prepared in accordance with the accounting policies set out in Note 1 of the financial statements and comply with the charity's governing document, the Charities Act 2011 and "Accounting and Reporting by Charities: Statement of Recommended Practice" applicable to charities preparing their accounts in accordance with the Financial Reporting Standard applicable in the UK and Republic of Ireland (FRS 102) (effective 1 January 2019).

OBJECTIVES

The charities objectives are: The advancement of arts and culture for the public benefit in Crawley, West Sussex and the surrounding area, in particular, but not exclusively by the provision of public performances, exhibitions, installations, and workshops.

VISION

Our vision is for Crawley and the people who are there to be fulfilled, vibrant and thrive through creativity.

MISSION

With gentle tenacity and kind energy we champion creative people and their creativity in Crawley as a catalyst for positive social change in their lives and a creative place beyond its boundaries.

VALUES

- Create:** creativity and creative acts are at the heart of what we do.
- Support:** we develop the ideas & talent of creative practitioners to make the best work they can in Crawley and beyond.
- Include:** anyone who wants to join in, can.
- Surprise:** we encourage people to expect the unexpected.
- Listen:** we take time to respond to what people tell us and remain nimble enough to respond.
- Collaborate:** we work with people to become more than the sum of our parts.



Audiences at Future Cargo by Requardt & Rosenberg (2022)

ACHIEVEMENTS & PERFORMANCE

2022/23 sees our first full year as a CIO and continues to build on our partnership with Crawley Town Centre BID to bring a high quality arts offer to the town centre alongside a range of *Give it a Go* taster workshops on a Saturday afternoon for adults and young people alike. All our work this year has been free to the public.

This year saw our biggest project to date in *Aura's Odyssey*, working with Scarborough based Animated Objects Theatre Company to bring a 5 metre high puppet to the town, starting at Gatwick Airport and undergoing a bus tour of the neighbourhoods and a large-scale walkabout in Crawley town centre ending with a day of music in partnership with CCYS and AudioActive in Tilgate Park. Our work built a strong partnership with a school in Broadfield through the *Lookout* project and thanks to Arts Council England project funding we were able to commission two new professional outdoor performances developing our national reputation in the arts ecology.



Aura's Odyssey in Crawley town centre

AUDIENCE FEEDBACK

“ We had a marvellous time, and couldn't have been made to feel more welcome by Creative Crawley, the creatives; the BID; and the local communities. What an amazing experience!

Aura's Odyssey participant

“ Crawley needs a creative outlook and foundation which Creative Crawley has successfully started and sustained over the year.

Local business, May 2022

EVENTS TIMELINE

APR-DEC 2022

Give it a Go:
Street Art



Give it a Go:
Sculpture



Creative Playground
stakeholders launch event



Give it a Go:
Drawing



Give it a Go:
Slapstick



Give it a Go:
Create a Comic Hero



Give it a Go:
Digital Art



Give it a Go:
Projection Mapping



APR

MAY

JUN

JUL

AUG

SEP

OCT

NOV

DEC

2022

2023

Lookout performances



Lookout gathering



Aura's Odyssey
workshops



Aura's Odyssey
puppet tour



Night Watch



Lookout mural



Without Walls & Future Cargo



Aura's Odyssey
blanket making



Graphic Rewilding



EVENTS TIMELINE

JAN-MAR 2023



Give it a Go:
Beatboxing



Give it a Go:
Radio



Give it a Go:
Zine-making

JAN

FEB

MAR

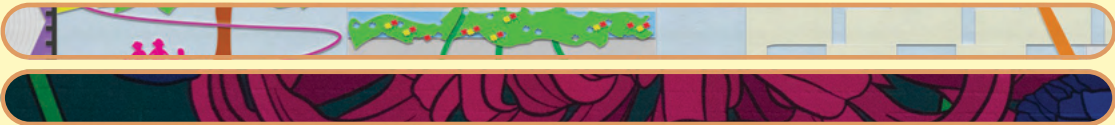
2023



Night Watch



Simple Cypher workshops
with The Hawth youth theatre



Lookout mural
Graphic Rewilding

THE FOCUS OF OUR WORK

This year was our last year working on an annual contract with Crawley Town Centre Business Improvement District. Together, we delivered the *Enliven: Crawley* programme that brought Crawley town centre to life with free to engage with arts and culture. It was our most ambitious work together yet.

Enliven: Crawley Through Young People's Eyes

From February to April 2022 we worked with artists Andy Field and Beckie Darlington and students from Seymour Primary School, Broadfield to run a series of workshops with the whole of Year 5 called *Lookout*.

The project asks the children to imagine what Crawley will be like in the future and culminated in a series of one to one performances for an adult audience on the top of the Town Hall car park (supported by Crawley Borough Council) led by 15 of the children.

As part of the project we commissioned local artist Karl Singaporewala to work with Andy and Becky to create a permanent mural in Crawley Library presenting the children's idea of the future in one artwork.

At the end of the project we held a gathering of people that had been part of the show from councillors to policemen, teachers and others to share the ideas of the children.

This was part of a national project with 5 other UK locations taking part and the artists are now making a film about the project to be released in 2023/24.

AUDIENCE FEEDBACK

“ Beautiful and insightful. Lovey to hear the unfiltered creativity of children and their hopes and fears for the future

Lookout audience member



Andy Field and Beckie Darlington with a group of Lookout participants

Enliven: You're Welcome

May to September saw our most ambitious programme to date, celebrating the welcoming nature of Crawley and its residents through two major outdoor performance based artworks.

In May, in partnership with Crawley Borough Council (CBC) and Brighton Festival, we worked with The Place London to present Requardt & Rosenberg's *Future Cargo*, a contemporary dance show on the back of a 40 ft truck, in Memorial Gardens in the centre of Crawley.

We also worked with CBC and Brighton Festival to promote their *Without Walls* programme of outdoor performances in Queens Square on the same day as *Future Cargo*.

Over 250 people watched the show in Memorial Gardens, listening on headphones as they watched the futuristic dance piece play out in front of them.

Watch a film of the night in Crawley [here](#).



AUDIENCE FEEDBACK

“ It has brought something new and exciting to Crawley, supporting both footfall and the local economy.

Funder, *Enliven: You're Welcome*

“ It is wonderful to have these events in Crawley. My sons enjoyed the workshops and we were amazed with the Cargo show.

Parent of participant, *Enliven: You're Welcome*



AURA'S ODYSSEY

In August this year, after 18 months of planning, we saw the culmination of the town wide project *Aura's Odyssey*.

Aura is a 5 metre high puppet who came to Crawley as part of her odyssey to find a new home. Aura is a refugee and we worked in partnership with 19 community groups to share Aura's story.

In the lead up to the tour, we made a blanket to welcome her with over 220 squares designed and made by students from local schools and over 100 residents. Women from Welcome Refugees Crawley helped us sew the 10m x 8 m blanket together which was presented to Aura at County Mall.

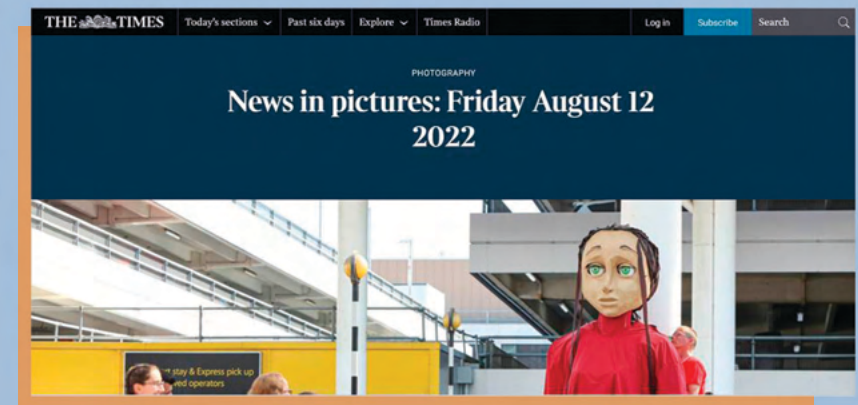
Aura arrived at the South Terminal at Gatwick Airport and went on an open top bus tour taking in Bewbush, Maidenbower and Ifield, a walkabout in Crawley town centre and finished her journey in Tilgate Park where a music festival took place in partnership with CCYS and AudioActive.

There were 30 community artworks created over 8 workshops with over 400 participants. Aura was seen by just under 30,000 people across 4 days.

We levered an additional £15k in funding from Arts Council England in addition to funds from CTC BID to bring this project to life.

For the *Enliven: You're Welcome* season as a whole we achieved 35 pieces of coverage, Highlights include a picture featured on the front page of The Times online, an article in the New Statesmen's online City Monitor, a feature on BBC South Today TV and BBC Sussex and Surrey Radio. You can read all the coverage [here](#).

You can watch a 9 minute film about *Aura's Odyssey* in Crawley [here](#).



AUDIENCE FEEDBACK

“ This brought new community spirit and unknown arts people in the town out so people can meet them

Aura's Odyssey audience

ENLIVEN: OCTOBER 2022 – MARCH 2023

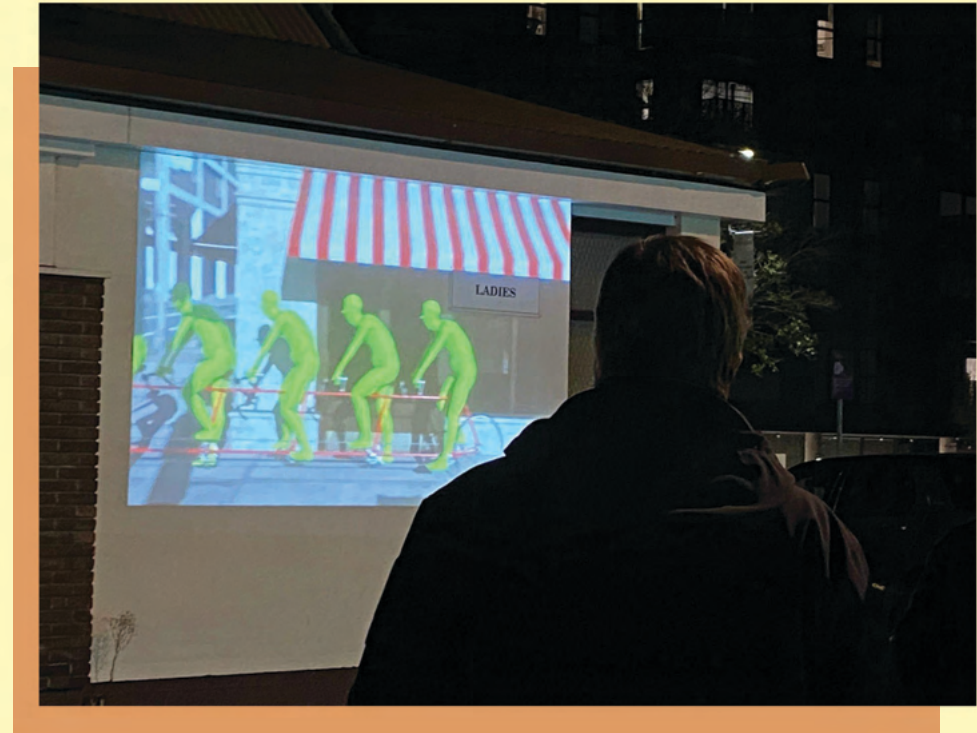
Night Watch by videoclub

Our final project with Crawley Town Centre BID this year was a series of film trails on walls and buildings in Crawley town centre over three events from November to February. Videoclub worked with volunteers from Crawley LGBTQU+ to select just 5 films per trail from over 200 submissions from international filmmakers following an open call. We invited people to see Crawley differently and encourage them to stay in town towards the end of the working day and the trails attracted 110 people.

AUDIENCE FEEDBACK

“ This is cool.
Audience, Night Watch

“ Something that opens your eyes to how
they think and how they see things.
Audience, Night Watch



Audiences at Night Watch

ENLIVEN: GIVE IT A GO

We worked with a range of artists in different town centre spaces including Ancient Priors (thanks to Crawley Borough Council), Crawley Museum, HMV, County Mall, Crawley Library and Crawley College to host a range of create workshops for beginners on the last Saturday of each month.

STREET ART, **SLAPSTICK**, Sculpture, Digital Art, *Comic book creation*, Dance, Projection Mapping, Drawing, **Beatboxing**, Radio, Zine-making.

AUDIENCE FEEDBACK

Great opportunity to be creative in these economically trying times.

Give it a Go workshop participant

These events are so valuable to the young people of Crawley. Full of diversity and always enjoyed.

Give it a Go workshop participant



Workshops for projection mapping (top), slapstick (middle) and street art (bottom)

AND MORE

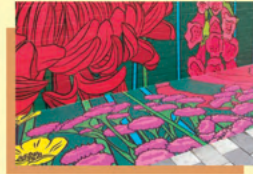


Creative Playground

This year saw the start of the planning phase for *Creative Playground*, the Arts Council England, Creative People and Places project for Crawley where local residents take part in and decide what arts and culture happens in their town. Led by Manor Royal BID and a core consortium including Diverse Crawley, Crawley LGBTQ+, Crawley Town Community Foundation and The Hawth with Creative Crawley as the Managing Agent, this project runs for three years.

A Project Director was appointed who only stayed in post for 6 months after another company they created was successful in receiving regular funding from Arts Council England. In this year, we held a launch event at the Nexus building on Manor Royal, recruited an evaluator for the project as well as new Project Co-Directors, Sophie Eustace and Louise Blackwell who share the post and started in March 2023. The rest of the *Creative Playground* staff team will start in 23/24.

Graphic Rewilding: Crawley Town Centre by Baker & Borowski



In October 2021 with Crawley Town Centre BID, we commissioned Sussex based artists Baker & Borowski to create a 60 metre mural and additional street furniture wraps based on local flowers. The mural was installed with a view to it lasting until February 2022. At the time of writing (Sept 2023) the vinyl mural is still in situ and looking good thanks to care and attention from our team and budget from Crawley Town centre BID towards its upkeep. The artists also created displays outside Crawley College and tree, bench and bin wraps across the town centre that create a trail and are still in situ. We continued to look after the mural until April 2023 when CTC BID took over the upkeep.

HOW OUR ACTIVITIES DELIVER PUBLIC BENEFIT

We supported local and national professional artists and local community groups to present their creative work in Crawley and local people took part in that work. We offered outdoor creative experiences to the people of Crawley on a regular basis and gave work to local people. In setting our objectives, the trustees have given careful consideration to the Charity Commission's general guidance on public benefit.

The *Give it a Go* workshops gave the public a chance to try new creative acts in a shared space building confidence and offering a place for new people to meet each other.

New commissions: Simple Cypher & Stomping Ground



Thanks to funding from Arts Council England in this year, we were able to contribute to the creation of two new pieces of outdoor performance for our future programme. Circus and Hip-Hop show *Roll Model* by Simple Cypher and Walker Dance Theatre's *Tread*. Commissioning enables us to raise our profile nationally, support the development of new work by innovative national artists and feed our future programme. As part of the commissioning agreement with Simple Cypher, they delivered two circus skills workshops at The Hawth with the Youth Theatre.

Crawley Creatives

Thanks to funding from Arts Council England, we began hosting creative meet-ups for local professional creatives in Crawley to start to gather intel on what support they need, to encourage collaboration and to explore ways of shining a light on the local professional creative talent and career pathways. Over 40 creatives in West Sussex and Surrey came together and we developed a new page for our website celebrating Crawley Creatives and an exhibition, both of which were launched in April 2023 and will feature in our 23/24 report.



WHO USED AND BENEFITTED FROM OUR SERVICES?

22 / 23 IN NUMBERS

207,829*

AUDIENCES



855

PARTICIPANTS



24

VOLUNTEERS



14

BUSINESSES



84

ARTISTS



8

FREELANCERS



21

COMMUNITY GROUPS



WHICH WAS ACHIEVED THROUGH:

5

OUTDOOR PERFORMANCES



20

WORKSHOPS & MEET-UPS



3

OUTDOOR FILM TRAILS



1

NEIGHBOURHOOD BUSTOUR

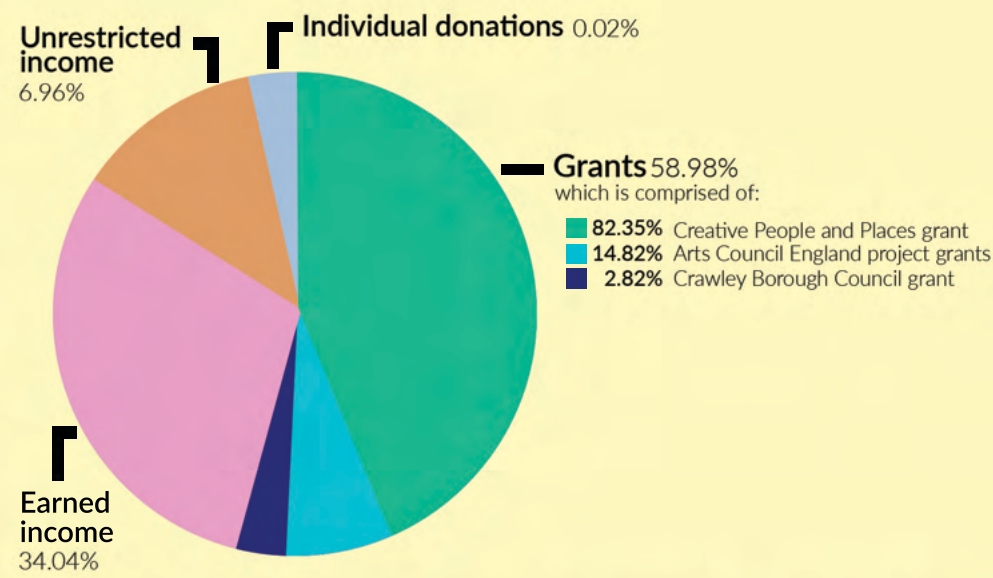


The audiences who saw our work consisted of adults and children who use the town centre, passers-by who saw the bus tour of *Aura's Odyssey* and visitors who were in Tilgate Park, Bewbush West Playing Fields or Maidenbower Park. The workshop participants ranged from 8 years old to adults and varied dependent on what the art form was that led.

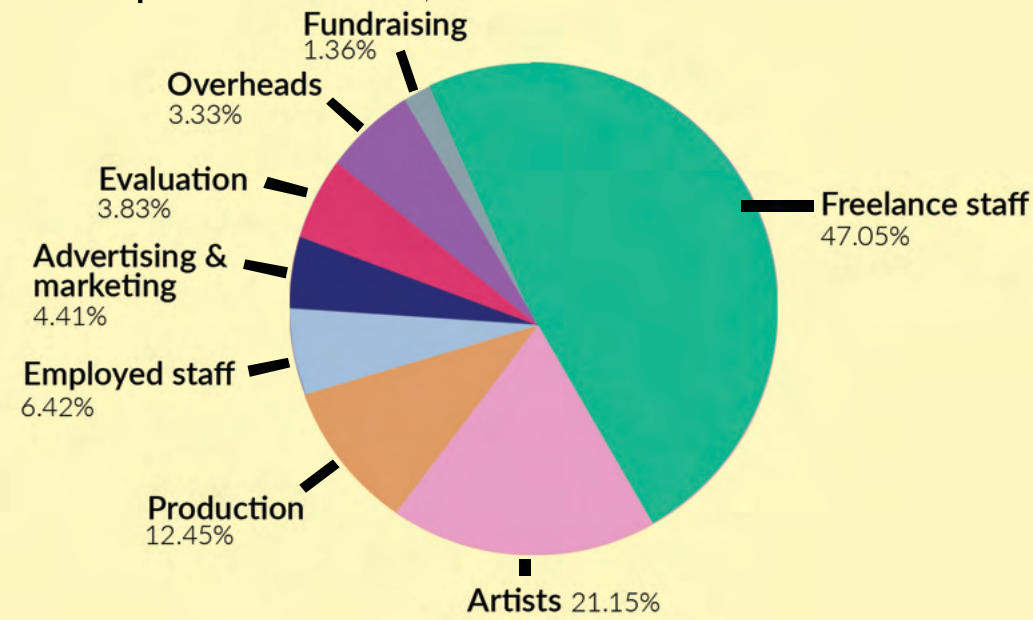
Although it's difficult to track the exact number of people who have experienced our work because it mostly exists in the public realm, we have used Place Informatics Ltd's footfall tracking software (used by Crawley Town Centre BID) and County Mall's footfall tracker to get footfall figures in the town. Gatwick Airport gave us figures for the South Terminal footfall and we have calculated the number of people who have witnessed the *Lookout Mural* in Crawley Library by using 15% of the annual total visitors to the building. For *Graphic Rewilding* we have based the figures on Place Informatic data which gives footfall between Queensway and The Broadway as 85,000 for July 2022. We have multiplied this by 12 to give an annual average and assumed that 15% of these people travelled down The Pavement (where the mural exists) giving us a conservative estimation of 151,200 people who saw the mural in 22/23.

FINANCIAL REVIEW

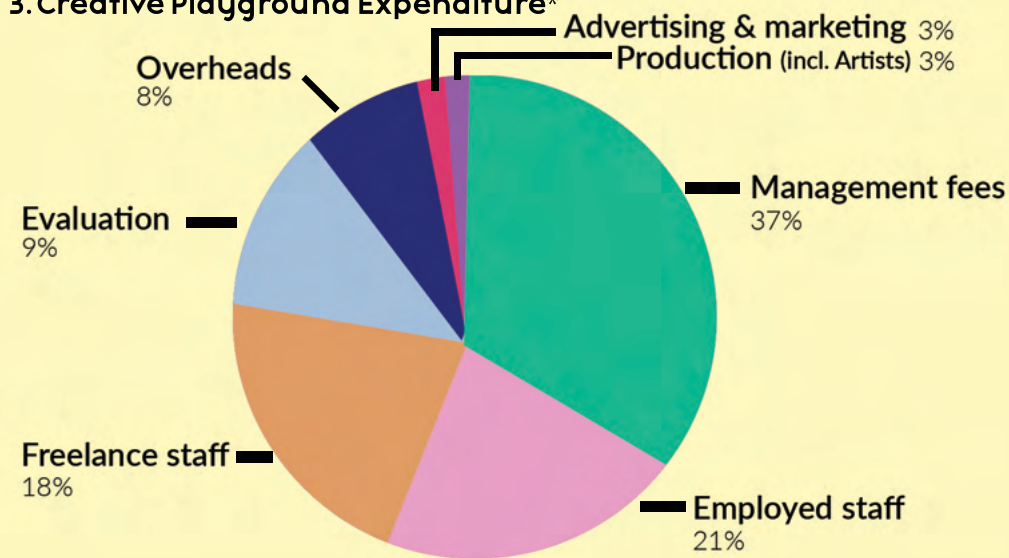
1. Total Income = £360,299



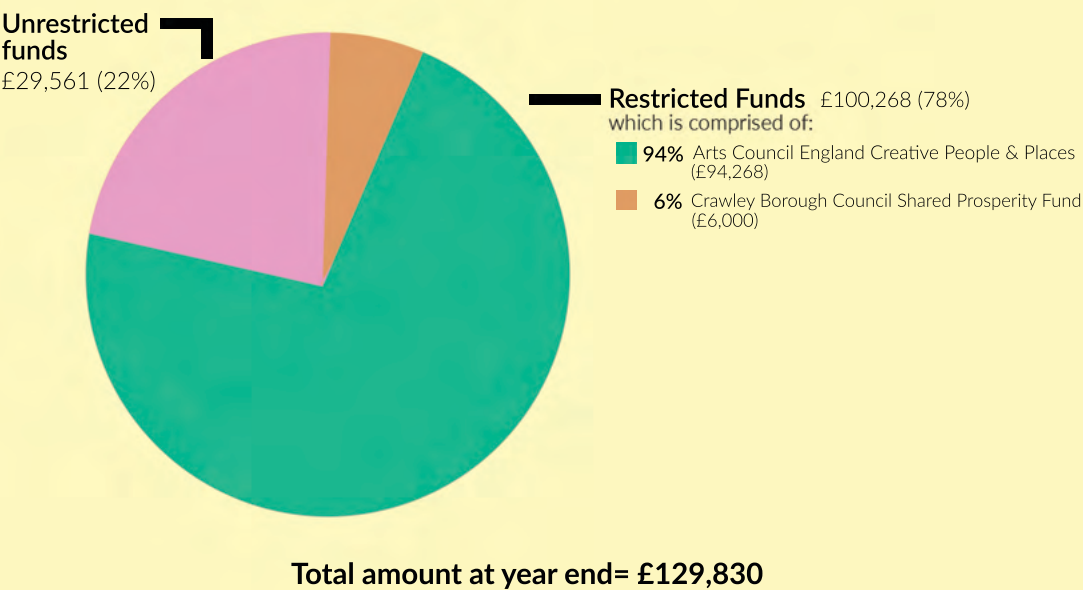
2. Total Expenditure = £265,352



3. Creative Playground Expenditure*



4. Total Year End Balances



*22/23 was the setup year for the Creative People and Places project. There was very little programme activity as Arts Council England required the Core Consortium to employ a team and develop a business plan. 23/24 is when programme delivery begins. Management fees were front loaded to this set up year and decrease in 23/24 onwards.

FINANCIAL REVIEW (continued)

The charity continued to grow in this its first full year, building on the work started in the previous period and this is reflected in the results. Total income for the year was £360,299 (2022: £51,746) and of this £335,214 was restricted (2022: £49,246).

Total expenditure for the year was £265,352 (2022: £16,863), resulting in a surplus for the year of £94,947 (2022: £34,883).

Going Concern

After making appropriate enquiries, the trustees have a reasonable expectation that the charity has sufficient resources to continue in operational existence for the foreseeable future and for this reason they continue to adopt the going concern basis in preparing the financial statements.

Reserves Policy

The charity aims to build up unrestricted reserves equal to approximately three to six months unrestricted expenditure. The trustees believe that reserves at this level will ensure that in the event of a significant drop in funding, Creative Crawley would be able to continue its work while consideration is given to ways in which funds may be raised. Unrestricted reserves at the year end were £29,561 (2022: £968).

Risk Assessment

The trustees are responsible for overseeing the risks faced by the charity. Risks are identified and assessed throughout the year. The trustees are satisfied that any risks are adequately mitigated where necessary and they have undertaken an overall risk assessment.



Audiences at Future Cargo



Aura's Odyssey in County Mall

STAFF, GOVERNANCE & MANAGEMENT

Crawley Creative CIO is registered as a Charitable Incorporated Organisation (CIO) with the Charities Commission (England & Wales), charity number 1195308 and is governed by its Constitution dated 23rd July 2021.

Staff

All the staff were employed on a part-time freelance basis unless stated.
In this year we worked with:

LOUISE BLACKWELL
Creative Director

SAM EVANS
Associate Director, Production

BEN LINTOTT
Digital Content Co-ordinator

JENNY PEARCE
Producer

CHLOE BOND
Project Assistant

LUCY STONE
Fundraiser

SEAN PHILLIPS
Technician (*Future Cargo* & *Aura's Odyssey*)

JOSH TANZI
Sound Engineer (*Aura's Odyssey*)

BEN PRICE
Usher (*Lookout*)

CHARLOTTE VIVIAN
Usher (*Lookout*)

DARYL BRANCH
Project Director (Full-Time employee, 6 months - *Creative Playground*)

RECRUITMENT AND APPOINTMENT OF TRUSTEES:

The trustees are appointed under the term of the charity's Constitution. Each new trustee is given a copy of the Constitution, a copy of *The Essential Trustee* (guidance issued by the Charity Commission) and details of the charity's latest Annual Report and statement of accounts. New trustees are recruited in consultation with the Creative Director to ensure that the requisite skills are available to support the charity's activities.

Board of Trustees

The trustees that served during the period and up to the date of approving the financial statements for the period ended 31 March 2023 were as follows:

STEVE SAWYER
Executive Director - Manor Royal BID (Chair)

VICKI ILLINGWORTH
Principal & Deputy Chief Exec.- Chichester College Group

ADAM JOOLIA
CEO - Audio Active

PARVEEN KHAN
Response Officer - Carers Support West Sussex

LAIBA BAIG
Chairwoman - Crawley Youth Council

DAVE SAVAGE
CEO - Crawley Community Youth Service

TONY WITTON
Arts & Cultural Services Manager - Kent County Council
Chair - Crawley Festival

VANESSA DELL
Head of Art - Manor Green College

ANDREA DUMBRELL
Project Manager - Crawley Museum

The Partners



Supported using public funding by
**ARTS COUNCIL
ENGLAND**



THE PLACE

CM
COUNTY MALL



Crawley
College



EMW



**CRAWLEY
festival**

**LONDON
GATWICK**



**METRO
BANK**

THE COMIC SHOP



**CRAWLEY
MUSEUM**

METROBUS



**APPLE TREE CENTRE
CRAWLEY SANATAN MANDIR
GURJAR HINDU UNION
Education | Culture | Integration**

**SHOREDITCH
TOWN HALL**

C C Y S
ENJOY
BEING
YOUNG
CRAWLEY COMMUNITY YOUTH SERVICE

The Artists

Alison Dollery
Andy Field and Beckie Darlington
Animated Objects
AudioActive
Baker & Borowski
Bloco Do Sol
BRiGHTBLACK
Conrad Murray
Communitas Dance
Daniel Locke
Erin James
Karl Singaporewala
Lucy Cran
Murmuration Arts
Platform B
Requardt & Rosenberg
Maggie Slabon
Tom Goulden
Tons of Sound
Simple Cypher
videoclub
Walker Dance Theatre

WHAT THE PEOPLE SAY

💬 This provided positive opportunities to experience the town centre and shows what can happen!

Participant, *Enliven: You're Welcome*

💬 Wonderful. Something a little different but still creative and encouraging.

Participant, *Give it a Go workshop*

💬 I'm new to the area it was helpful in giving me a platform to be seen.

Artist, *Enliven: You're Welcome*

💬 DIVERSECrawley has been invited to participate in some projects and I have enjoyed participating in memorable projects.

Audience, *Aura's Odyssey*

💬 Provided us with confidence to carry on with an event after being knocked back by COVID.

Local business, *Enliven: You're Welcome*

💬 Wow. It's the busiest I've seen the High Street in the day for years. Amazing creation, her story is very moving and I say well done. Aura is definitely something completely different and out of the ordinary, loved seeing her

Audience member, *Aura's Odyssey*

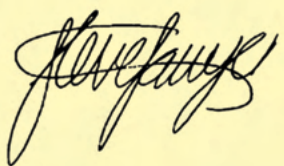
PLANS FOR FUTURE PERIODS

In 2023/24 the Creative Playground programme begins in earnest and a new team starts to deliver it in the neighbourhoods of Crawley.

We continue to develop the Crawley Creatives professional development network and build significant partnerships with local organisations to explore what a creative hub in the town could look like.

Although the formal partnership with CTC BID comes to an end, we continue to work with key stakeholders to bring the town to life with arts and culture.

This report was approved by the Board of Trustees on 21 November 2023 and signed on its behalf by:



Steve Sawyer
Chair of the Board of Trustees



A large crowd of people is gathered in a city square for a Creative Crawley event. In the foreground, several people are dancing or moving in a circle. The square is paved with light-colored tiles. In the background, there are modern buildings with large glass windows. One building has a 'METRO BANK' sign. Another building has a 'DECATHLON' sign. A white flag with text is visible in the crowd. The sky is clear and blue.

CREATIVE CRAWLEY

Images courtesy of Ian Greenland & Jess Hand

Graphic design by Ben Lintott

creativecrawley.com • [@CreativeCrawley](https://www.instagram.com/CreativeCrawley)

Charity registration number 1195308

CREATIVE CRAWLEY CIO
ANNUAL REPORT AND UNAUDITED FINANCIAL STATEMENTS
FOR THE YEAR ENDED 31 MARCH 2023

CREATIVE CRAWLEY CIO

LEGAL AND ADMINISTRATIVE INFORMATION

Trustees

Steve Sawyer
Vanessa Dell
Vicki Illingworth
Laiba Baig
Adam Joolia
Tony Witton
David Savage
Andrea Dumbrell
Parveen Khan

Charity number

1195308

Principal address

Crawley College
College Road
Crawley
RH10 1NR

Independent examiner

West & Berry Limited
Mocatta House
Trafalgar Place
Brighton
BN1 4DU

CREATIVE CRAWLEY CIO

CONTENTS

	Page
Independent examiner's report	1
Statement of financial activities	2
Balance sheet	3
Notes to the financial statements	4 - 12

CREATIVE CRAWLEY CIO

INDEPENDENT EXAMINER'S REPORT TO THE TRUSTEES OF CREATIVE CRAWLEY CIO

I report to the trustees on my examination of the financial statements of Creative Crawley CIO for the year ended 31 March 2023.

Responsibilities and basis of report

As the trustees of the charity you are responsible for the preparation of the financial statements in accordance with the requirements of the Charities Act 2011 (the 2011 Act).

I report in respect of my examination of the charity's financial statements carried out under section 145 of the 2011 Act. In carrying out my examination I have followed all the applicable Directions given by the Charity Commission under section 145(5)(b) of the 2011 Act.

Independent examiner's statement

Since the charity's gross income exceeded £250,000 your examiner must be a member of a body listed in section 145 of the 2011 Act. I confirm that I am qualified to undertake the examination because I am a member of Association of Chartered Certified Accountants, which is one of the listed bodies.

Your attention is drawn to the fact that the charity has prepared financial statements in accordance with Accounting and Reporting by Charities preparing their accounts in accordance with the Financial Reporting Standard applicable in the UK and Republic of Ireland (FRS 102) in preference to the Accounting and Reporting by Charities: Statement of Recommended Practice issued on 1 April 2005 which is referred to in the extant regulations but has now been withdrawn.

I understand that this has been done in order for financial statements to provide a true and fair view in accordance with Generally Accepted Accounting Practice effective for reporting periods beginning on or after 1 January 2015.

I have completed my examination. I confirm that no matters have come to my attention in connection with the examination giving me cause to believe that in any material respect:

- 1 accounting records were not kept in respect of the charity as required by section 130 of the 2011 Act; or
- 2 the financial statements do not accord with those records; or
- 3 the financial statements do not comply with the applicable requirements concerning the form and content of accounts set out in the Charities (Accounts and Reports) Regulations 2008 other than any requirement that the accounts give a true and fair view which is not a matter considered as part of an independent examination.

I have no concerns and have come across no other matters in connection with the examination to which attention should be drawn in this report in order to enable a proper understanding of the financial statements to be reached.

Michelle Westbury FCCA

Michelle Westbury FCCA

West & Berry Limited

Mocatta House
Trafalgar Place
Brighton
BN1 4DU

2023/12/18
Dated:

CREATIVE CRAWLEY CIO

STATEMENT OF FINANCIAL ACTIVITIES INCLUDING INCOME AND EXPENDITURE ACCOUNT

FOR THE YEAR ENDED 31 MARCH 2023

		Unrestricted funds 2023 £	Restricted funds 2023 £	Total 2023 £	Unrestricted funds 2022 £	Restricted funds 2022 £	Total 2022 £
	Notes						
<u>Income from:</u>							
Donations and legacies	3	25,000	212,560	237,560	2,500	13,500	16,000
Charitable activities	4	-	122,654	122,654	-	35,746	35,746
Investments	5	85	-	85	-	-	-
Total income		25,085	335,214	360,299	2,500	49,246	51,746
<u>Expenditure on:</u>							
Raising funds	6	1,313	2,288	3,601	-	-	-
Charitable activities	7	3,747	258,004	261,751	1,532	15,331	16,863
Total expenditure		5,060	260,292	265,352	1,532	15,331	16,863
Net incoming resources before transfers		20,025	74,922	94,947	968	33,915	34,883
Gross transfers between funds		8,568	(8,568)	-	-	-	-
Net income for the year/ Net movement in funds		28,593	66,354	94,947	968	33,915	34,883
Fund balances at 1 April 2022		968	33,915	34,883	-	-	-
Fund balances at 31 March 2023		29,561	100,269	129,830	968	33,915	34,883

The statement of financial activities includes all gains and losses recognised in the year.

All income and expenditure derive from continuing activities.

CREATIVE CRAWLEY CIO

BALANCE SHEET

AS AT 31 MARCH 2023

	Notes	2023 £	£	2022 £	£
Current assets					
Debtors	12	111,437		-	
Cash at bank and in hand		48,848		78,231	
		<u>160,285</u>		<u>78,231</u>	
Creditors: amounts falling due within one year	13	(30,455)		(43,348)	
Net current assets			129,830		34,883
Income funds					
Restricted funds	15		100,269		33,915
Unrestricted funds			29,561		968
			<u>129,830</u>		<u>34,883</u>

The financial statements were approved by the Trustees on 2023/12/15

Steve Sawyer
.....
Steve Sawyer
Trustee

CREATIVE CRAWLEY CIO

NOTES TO THE FINANCIAL STATEMENTS

FOR THE YEAR ENDED 31 MARCH 2023

1 Accounting policies

Charity information

Creative Crawley CIO is a charitable incorporated organisation, charity number 1195308. The principal address of the charity is Crawley College, College Road, Crawley RH10 1NR.

1.1 Reporting period

These are the first financial statements of the CIO and cover the period from the charity's incorporation on 27th July 2021 until its accounting period end.

1.2 Accounting convention

The financial statements have been prepared in accordance with the charity's governing document, the Charities Act 2011, FRS 102 "The Financial Reporting Standard applicable in the UK and Republic of Ireland" ("FRS 102") and the Charities SORP "Accounting and Reporting by Charities: Statement of Recommended Practice applicable to charities preparing their accounts in accordance with the Financial Reporting Standard applicable in the UK and Republic of Ireland (FRS 102)" (effective 1 January 2019). The charity is a Public Benefit Entity as defined by FRS 102.

The charity has taken advantage of the provisions in the SORP for charities not to prepare a Statement of Cash Flows.

The financial statements have departed from the Charities (Accounts and Reports) Regulations 2008 only to the extent required to provide a true and fair view. This departure has involved following the Statement of Recommended Practice for charities applying FRS 102 rather than the version of the Statement of Recommended Practice which is referred to in the Regulations but which has since been withdrawn.

The financial statements are prepared in sterling, which is the functional currency of the charity. Monetary amounts in these financial statements are rounded to the nearest £.

The financial statements have been prepared under the historical cost convention. The principal accounting policies adopted are set out below.

1.3 Going concern

At the time of approving the financial statements, the trustees have a reasonable expectation that the charity has adequate resources to continue in operational existence for the foreseeable future. Thus the trustees continue to adopt the going concern basis of accounting in preparing the financial statements.

1.4 Charitable funds

Unrestricted funds are available for use at the discretion of the trustees in furtherance of their charitable objectives.

Restricted funds are subject to specific conditions by donors as to how they may be used. The purposes and uses of the restricted funds are set out in the notes to the financial statements.

Endowment funds are subject to specific conditions by donors that the capital must be maintained by the charity.

1.5 Income

Income is recognised when the charity is legally entitled to it after any performance conditions have been met, the amounts can be measured reliably, and it is probable that income will be received.

Cash donations are recognised on receipt. Other donations are recognised once the charity has been notified of the donation, unless performance conditions require deferral of the amount. Income tax recoverable in relation to donations received under Gift Aid or deeds of covenant is recognised at the time of the donation.

CREATIVE CRAWLEY CIO

NOTES TO THE FINANCIAL STATEMENTS (CONTINUED) FOR THE YEAR ENDED 31 MARCH 2023

1 Accounting policies

(Continued)

Legacies are recognised on receipt or otherwise if the charity has been notified of an impending distribution, the amount is known, and receipt is expected. If the amount is not known, the legacy is treated as a contingent asset.

1.6 Expenditure

Expenditure is recognised once there is a legal or constructive obligation to transfer economic benefit to a third party, it is probable that a transfer of economic benefits will be required in settlement, and the amount of the obligation can be measured reliably.

Expenditure is classified by activity. The costs of each activity are made up of the total of direct costs and shared costs, including support costs involved in undertaking each activity. Direct costs attributable to a single activity are allocated directly to that activity. Shared costs which contribute to more than one activity and support costs which are not attributable to a single activity are apportioned between those activities on a basis consistent with the use of resources. Central staff costs are allocated on the basis of time spent, and depreciation charges are allocated on the portion of the asset's use.

1.7 Cash and cash equivalents

Cash and cash equivalents include cash in hand, deposits held at call with banks, other short-term liquid investments with original maturities of three months or less, and bank overdrafts. Bank overdrafts are shown within borrowings in current liabilities.

1.8 Financial instruments

The charity has elected to apply the provisions of Section 11 'Basic Financial Instruments' and Section 12 'Other Financial Instruments Issues' of FRS 102 to all of its financial instruments.

Financial instruments are recognised in the charity's balance sheet when the charity becomes party to the contractual provisions of the instrument.

Financial assets and liabilities are offset, with the net amounts presented in the financial statements, when there is a legally enforceable right to set off the recognised amounts and there is an intention to settle on a net basis or to realise the asset and settle the liability simultaneously.

Basic financial assets

Basic financial assets, which include debtors and cash and bank balances, are initially measured at transaction price including transaction costs and are subsequently carried at amortised cost using the effective interest method unless the arrangement constitutes a financing transaction, where the transaction is measured at the present value of the future receipts discounted at a market rate of interest. Financial assets classified as receivable within one year are not amortised.

Basic financial liabilities

Basic financial liabilities, including creditors and bank loans are initially recognised at transaction price unless the arrangement constitutes a financing transaction, where the debt instrument is measured at the present value of the future payments discounted at a market rate of interest. Financial liabilities classified as payable within one year are not amortised.

Debt instruments are subsequently carried at amortised cost, using the effective interest rate method.

Trade creditors are obligations to pay for goods or services that have been acquired in the ordinary course of operations from suppliers. Amounts payable are classified as current liabilities if payment is due within one year or less. If not, they are presented as non-current liabilities. Trade creditors are recognised initially at transaction price and subsequently measured at amortised cost using the effective interest method.

CREATIVE CRAWLEY CIO

NOTES TO THE FINANCIAL STATEMENTS (CONTINUED) FOR THE YEAR ENDED 31 MARCH 2023

1 Accounting policies (Continued)

Derecognition of financial liabilities

Financial liabilities are derecognised when the charity's contractual obligations expire or are discharged or cancelled.

1.9 Employee benefits

The cost of any unused holiday entitlement is recognised in the period in which the employee's services are received.

Termination benefits are recognised immediately as an expense when the charity is demonstrably committed to terminate the employment of an employee or to provide termination benefits.

2 Critical accounting estimates and judgements

In the application of the charity's accounting policies, the trustees are required to make judgements, estimates and assumptions about the carrying amount of assets and liabilities that are not readily apparent from other sources. The estimates and associated assumptions are based on historical experience and other factors that are considered to be relevant. Actual results may differ from these estimates.

The estimates and underlying assumptions are reviewed on an ongoing basis. Revisions to accounting estimates are recognised in the period in which the estimate is revised where the revision affects only that period, or in the period of the revision and future periods where the revision affects both current and future periods.

3 Donations and legacies

	Unrestricted funds	Restricted funds	Total	Unrestricted funds	Restricted funds	Total
	2023 £	2023 £	2023 £	2022 £	2022 £	2022 £
Donations and gifts	25,000	206,560	231,560	2,500	13,500	16,000
Government grants	-	6,000	6,000	-	-	-
	<u>25,000</u>	<u>212,560</u>	<u>237,560</u>	<u>2,500</u>	<u>13,500</u>	<u>16,000</u>

4 Charitable activities

	Charitable activities income 2023 £	Charitable activities income 2022 £
Services provided under contract	117,075	35,746
Other income	5,579	-
	<u>122,654</u>	<u>35,746</u>

CREATIVE CRAWLEY CIO

NOTES TO THE FINANCIAL STATEMENTS (CONTINUED) FOR THE YEAR ENDED 31 MARCH 2023

5 Investments

	Unrestricted funds	Total
	2023 £	2022 £
Interest receivable	85	-
	<u>85</u>	<u>-</u>

6 Raising funds

	Unrestricted funds	Restricted funds	Total	Total
	2023 £	2023 £	2023 £	2022 £
<u>Fundraising and publicity</u>				
Other fundraising costs	1,313	2,288	3,601	-
	<u>1,313</u>	<u>2,288</u>	<u>3,601</u>	<u>-</u>

CREATIVE CRAWLEY CIO

NOTES TO THE FINANCIAL STATEMENTS (CONTINUED) FOR THE YEAR ENDED 31 MARCH 2023

7 Charitable activities

	Charitable activities expenditure 2023 £	Charitable activities expenditure 2022 £
Staff costs	17,036	-
Artist fees and expenses	56,126	4,825
General production costs	9,994	138
Production materials and equipment	19,297	189
Venue hire	779	80
Freelance staff costs	120,623	10,000
Recruitment, training and development	1,385	99
Advertising and marketing	11,702	-
Evaluation	10,170	-
Freelance crew and production support	4,217	-
Hospitality and catering	676	-
Project travel, accommodation and subsistence	2,298	-
Payroll fees	240	-
	<hr/> 254,543	<hr/> 15,331
Share of support costs (see note 8)	5,308	32
Share of governance costs (see note 8)	1,900	1,500
	<hr/> 261,751	<hr/> 16,863
Analysis by fund		
Unrestricted funds	3,747	1,532
Restricted funds	258,004	15,331
	<hr/> 261,751	<hr/> 16,863

CREATIVE CRAWLEY CIO

NOTES TO THE FINANCIAL STATEMENTS (CONTINUED) FOR THE YEAR ENDED 31 MARCH 2023

8 Support costs

	Support costs	Governance costs	2023	Support costs	Governance costs	2022
	£	£	£	£	£	£
Insurance	1,776	-	1,776	-	-	-
IT equipment and software costs	1,289	-	1,289	-	-	-
Printing, postage and stationery	2	-	2	-	-	-
Sundry expenses	288	-	288	-	-	-
Bank fees	73	-	73	32	-	32
Subscriptions	1,385	-	1,385	-	-	-
Travel, accommodation and subsistence	495	-	495	-	-	-
Accountancy and Independent examination fees	-	1,900	1,900	-	1,500	1,500
	<u>5,308</u>	<u>1,900</u>	<u>7,208</u>	<u>32</u>	<u>1,500</u>	<u>1,532</u>
Analysed between Charitable activities	<u>5,308</u>	<u>1,900</u>	<u>7,208</u>	<u>32</u>	<u>1,500</u>	<u>1,532</u>

Governance costs includes payments to the accountants of £950 + vat (2022: £750 + vat) for accountancy fees and £950 + vat (2022: £750 + vat) for independent examination fees. Payroll fees of £240 (2022: £nil) were also paid to the accountants in the year.

9 Trustees

None of the trustees (or any persons connected with them) received any remuneration or benefits from the charity during the year or prior year.

10 Employees

The average monthly number of employees during the year was:

	2023 Number	2022 Number
	<u>1</u>	<u>-</u>
Employment costs	2023 £	2022 £
Wages and salaries	<u>17,036</u>	<u>-</u>

There were no employees whose annual remuneration was more than £60,000.

CREATIVE CRAWLEY CIO

NOTES TO THE FINANCIAL STATEMENTS (CONTINUED) FOR THE YEAR ENDED 31 MARCH 2023

11 Taxation

The charity is exempt from tax on income and gains falling within section 505 of the Taxes Act 1988 or section 252 of the Taxation of Chargeable Gains Act 1992 to the extent that these are applied to its charitable objects.

12 Debtors

	2023 £	2022 £
Amounts falling due within one year:		
Other debtors	111,437	-

13 Creditors: amounts falling due within one year

	Notes	2023 £	2022 £
Other taxation and social security		-	12,160
Deferred income	14	-	29,269
Trade creditors		8,450	419
Other creditors		20,105	-
Accruals and deferred income		1,900	1,500
		30,455	43,348

14 Deferred income

	2023 £	2022 £
Other deferred income	-	29,269

Deferred income relates to income received in the previous period that was for projects for this year, and is included in the financial statements as follows:

	2023 £	2022 £
Deferred income is included within:		
Current liabilities	-	29,269
Movements in the year:		
Deferred income at 1 April 2022	29,269	-
Released from previous periods	(29,269)	-
Resources deferred in the year	-	29,269
Deferred income at 31 March 2023	-	29,269

CREATIVE CRAWLEY CIO

NOTES TO THE FINANCIAL STATEMENTS (CONTINUED) FOR THE YEAR ENDED 31 MARCH 2023

15 Restricted funds

The income funds of the charity include restricted funds comprising the following unexpended balances of donations and grants held on trust for specific purposes:

	Movement in funds			Movement in funds			Transfers	Balance at
	Incoming resources	Resources expended	Balance at 1 April 2022	Incoming resources	Resources expended	Balance at 31 March 2023		
	£	£	£	£	£	£	£	£
Arts Council England - Enliven	13,500	-	13,500	1,500	(15,000)	-	-	-
Crawley Town Centre - Enliven	30,746	(15,232)	15,514	122,654	(129,600)	(8,568)	-	-
Crawley Borough Council - Enliven	5,000	-	5,000	-	(5,000)	-	-	-
Arts Council England - Creative Playground	-	(99)	(99)	175,000	(80,632)	-	-	94,269
ACE National Lottery Project Grants - Crawley Creatives	-	-	-	30,060	(30,060)	-	-	-
Crawley Borough Council - Shared Prosperity Fund	-	-	-	6,000	-	-	-	6,000
	49,246	(15,331)	33,915	335,214	(260,292)	(8,568)		100,269

CREATIVE CRAWLEY CIO

NOTES TO THE FINANCIAL STATEMENTS (CONTINUED) FOR THE YEAR ENDED 31 MARCH 2023

16 Analysis of net assets between funds

	Unrestricted funds 2023 £	Restricted funds 2023 £	Total 2023 £	Unrestricted funds 2022 £	Restricted funds 2022 £	Total 2022 £
Fund balances at 31 March 2023 are represented by:						
Current assets/(liabilities)	29,561	100,269	129,830	968	33,915	34,883
	<u>29,561</u>	<u>100,269</u>	<u>129,830</u>	<u>968</u>	<u>33,915</u>	<u>34,883</u>

17 Related party transactions

There were no disclosable related party transactions during the year or in the prior period.

Charity registration number 1195308

CREATIVE CRAWLEY CIO
ANNUAL REPORT AND UNAUDITED FINANCIAL STATEMENTS
FOR THE YEAR ENDED 31 MARCH 2023

CREATIVE CRAWLEY CIO

LEGAL AND ADMINISTRATIVE INFORMATION

Trustees

Steve Sawyer
Vanessa Dell
Vicki Illingworth
Laiba Baig
Adam Joolia
Tony Witton
David Savage
Andrea Dumbrell
Parveen Khan

Charity number

1195308

Principal address

Crawley College
College Road
Crawley
RH10 1NR

Independent examiner

West & Berry Limited
Mocatta House
Trafalgar Place
Brighton
BN1 4DU

CREATIVE CRAWLEY CIO

CONTENTS

	Page
Independent examiner's report	1
Statement of financial activities	2
Balance sheet	3
Notes to the financial statements	4 - 12

CREATIVE CRAWLEY CIO

INDEPENDENT EXAMINER'S REPORT TO THE TRUSTEES OF CREATIVE CRAWLEY CIO

I report to the trustees on my examination of the financial statements of Creative Crawley CIO for the year ended 31 March 2023.

Responsibilities and basis of report

As the trustees of the charity you are responsible for the preparation of the financial statements in accordance with the requirements of the Charities Act 2011 (the 2011 Act).

I report in respect of my examination of the charity's financial statements carried out under section 145 of the 2011 Act. In carrying out my examination I have followed all the applicable Directions given by the Charity Commission under section 145(5)(b) of the 2011 Act.

Independent examiner's statement

Since the charity's gross income exceeded £250,000 your examiner must be a member of a body listed in section 145 of the 2011 Act. I confirm that I am qualified to undertake the examination because I am a member of Association of Chartered Certified Accountants, which is one of the listed bodies.

Your attention is drawn to the fact that the charity has prepared financial statements in accordance with Accounting and Reporting by Charities preparing their accounts in accordance with the Financial Reporting Standard applicable in the UK and Republic of Ireland (FRS 102) in preference to the Accounting and Reporting by Charities: Statement of Recommended Practice issued on 1 April 2005 which is referred to in the extant regulations but has now been withdrawn.

I understand that this has been done in order for financial statements to provide a true and fair view in accordance with Generally Accepted Accounting Practice effective for reporting periods beginning on or after 1 January 2015.

I have completed my examination. I confirm that no matters have come to my attention in connection with the examination giving me cause to believe that in any material respect:

- 1 accounting records were not kept in respect of the charity as required by section 130 of the 2011 Act; or
- 2 the financial statements do not accord with those records; or
- 3 the financial statements do not comply with the applicable requirements concerning the form and content of accounts set out in the Charities (Accounts and Reports) Regulations 2008 other than any requirement that the accounts give a true and fair view which is not a matter considered as part of an independent examination.

I have no concerns and have come across no other matters in connection with the examination to which attention should be drawn in this report in order to enable a proper understanding of the financial statements to be reached.

Michelle Westbury FCCA

Michelle Westbury FCCA

West & Berry Limited

Mocatta House
Trafalgar Place
Brighton
BN1 4DU

2023/12/18
Dated:

CREATIVE CRAWLEY CIO

STATEMENT OF FINANCIAL ACTIVITIES INCLUDING INCOME AND EXPENDITURE ACCOUNT

FOR THE YEAR ENDED 31 MARCH 2023

		Unrestricted funds 2023 £	Restricted funds 2023 £	Total 2023 £	Unrestricted funds 2022 £	Restricted funds 2022 £	Total 2022 £
	Notes						
<u>Income from:</u>							
Donations and legacies	3	25,000	212,560	237,560	2,500	13,500	16,000
Charitable activities	4	-	122,654	122,654	-	35,746	35,746
Investments	5	85	-	85	-	-	-
Total income		25,085	335,214	360,299	2,500	49,246	51,746
<u>Expenditure on:</u>							
Raising funds	6	1,313	2,288	3,601	-	-	-
Charitable activities	7	3,747	258,004	261,751	1,532	15,331	16,863
Total expenditure		5,060	260,292	265,352	1,532	15,331	16,863
Net incoming resources before transfers		20,025	74,922	94,947	968	33,915	34,883
Gross transfers between funds		8,568	(8,568)	-	-	-	-
Net income for the year/ Net movement in funds		28,593	66,354	94,947	968	33,915	34,883
Fund balances at 1 April 2022		968	33,915	34,883	-	-	-
Fund balances at 31 March 2023		29,561	100,269	129,830	968	33,915	34,883

The statement of financial activities includes all gains and losses recognised in the year.

All income and expenditure derive from continuing activities.

CREATIVE CRAWLEY CIO

BALANCE SHEET

AS AT 31 MARCH 2023

	Notes	2023 £	£	2022 £	£
Current assets					
Debtors	12	111,437		-	
Cash at bank and in hand		48,848		78,231	
		<u>160,285</u>		<u>78,231</u>	
Creditors: amounts falling due within one year	13	(30,455)		(43,348)	
Net current assets			129,830		34,883
Income funds					
Restricted funds	15		100,269		33,915
Unrestricted funds			29,561		968
			<u>129,830</u>		<u>34,883</u>

The financial statements were approved by the Trustees on 2023/12/15

Steve Sawyer
.....
Steve Sawyer
Trustee

CREATIVE CRAWLEY CIO

NOTES TO THE FINANCIAL STATEMENTS

FOR THE YEAR ENDED 31 MARCH 2023

1 Accounting policies

Charity information

Creative Crawley CIO is a charitable incorporated organisation, charity number 1195308. The principal address of the charity is Crawley College, College Road, Crawley RH10 1NR.

1.1 Reporting period

These are the first financial statements of the CIO and cover the period from the charity's incorporation on 27th July 2021 until its accounting period end.

1.2 Accounting convention

The financial statements have been prepared in accordance with the charity's governing document, the Charities Act 2011, FRS 102 "The Financial Reporting Standard applicable in the UK and Republic of Ireland" ("FRS 102") and the Charities SORP "Accounting and Reporting by Charities: Statement of Recommended Practice applicable to charities preparing their accounts in accordance with the Financial Reporting Standard applicable in the UK and Republic of Ireland (FRS 102)" (effective 1 January 2019). The charity is a Public Benefit Entity as defined by FRS 102.

The charity has taken advantage of the provisions in the SORP for charities not to prepare a Statement of Cash Flows.

The financial statements have departed from the Charities (Accounts and Reports) Regulations 2008 only to the extent required to provide a true and fair view. This departure has involved following the Statement of Recommended Practice for charities applying FRS 102 rather than the version of the Statement of Recommended Practice which is referred to in the Regulations but which has since been withdrawn.

The financial statements are prepared in sterling, which is the functional currency of the charity. Monetary amounts in these financial statements are rounded to the nearest £.

The financial statements have been prepared under the historical cost convention. The principal accounting policies adopted are set out below.

1.3 Going concern

At the time of approving the financial statements, the trustees have a reasonable expectation that the charity has adequate resources to continue in operational existence for the foreseeable future. Thus the trustees continue to adopt the going concern basis of accounting in preparing the financial statements.

1.4 Charitable funds

Unrestricted funds are available for use at the discretion of the trustees in furtherance of their charitable objectives.

Restricted funds are subject to specific conditions by donors as to how they may be used. The purposes and uses of the restricted funds are set out in the notes to the financial statements.

Endowment funds are subject to specific conditions by donors that the capital must be maintained by the charity.

1.5 Income

Income is recognised when the charity is legally entitled to it after any performance conditions have been met, the amounts can be measured reliably, and it is probable that income will be received.

Cash donations are recognised on receipt. Other donations are recognised once the charity has been notified of the donation, unless performance conditions require deferral of the amount. Income tax recoverable in relation to donations received under Gift Aid or deeds of covenant is recognised at the time of the donation.

CREATIVE CRAWLEY CIO

NOTES TO THE FINANCIAL STATEMENTS (CONTINUED) FOR THE YEAR ENDED 31 MARCH 2023

1 Accounting policies

(Continued)

Legacies are recognised on receipt or otherwise if the charity has been notified of an impending distribution, the amount is known, and receipt is expected. If the amount is not known, the legacy is treated as a contingent asset.

1.6 Expenditure

Expenditure is recognised once there is a legal or constructive obligation to transfer economic benefit to a third party, it is probable that a transfer of economic benefits will be required in settlement, and the amount of the obligation can be measured reliably.

Expenditure is classified by activity. The costs of each activity are made up of the total of direct costs and shared costs, including support costs involved in undertaking each activity. Direct costs attributable to a single activity are allocated directly to that activity. Shared costs which contribute to more than one activity and support costs which are not attributable to a single activity are apportioned between those activities on a basis consistent with the use of resources. Central staff costs are allocated on the basis of time spent, and depreciation charges are allocated on the portion of the asset's use.

1.7 Cash and cash equivalents

Cash and cash equivalents include cash in hand, deposits held at call with banks, other short-term liquid investments with original maturities of three months or less, and bank overdrafts. Bank overdrafts are shown within borrowings in current liabilities.

1.8 Financial instruments

The charity has elected to apply the provisions of Section 11 'Basic Financial Instruments' and Section 12 'Other Financial Instruments Issues' of FRS 102 to all of its financial instruments.

Financial instruments are recognised in the charity's balance sheet when the charity becomes party to the contractual provisions of the instrument.

Financial assets and liabilities are offset, with the net amounts presented in the financial statements, when there is a legally enforceable right to set off the recognised amounts and there is an intention to settle on a net basis or to realise the asset and settle the liability simultaneously.

Basic financial assets

Basic financial assets, which include debtors and cash and bank balances, are initially measured at transaction price including transaction costs and are subsequently carried at amortised cost using the effective interest method unless the arrangement constitutes a financing transaction, where the transaction is measured at the present value of the future receipts discounted at a market rate of interest. Financial assets classified as receivable within one year are not amortised.

Basic financial liabilities

Basic financial liabilities, including creditors and bank loans are initially recognised at transaction price unless the arrangement constitutes a financing transaction, where the debt instrument is measured at the present value of the future payments discounted at a market rate of interest. Financial liabilities classified as payable within one year are not amortised.

Debt instruments are subsequently carried at amortised cost, using the effective interest rate method.

Trade creditors are obligations to pay for goods or services that have been acquired in the ordinary course of operations from suppliers. Amounts payable are classified as current liabilities if payment is due within one year or less. If not, they are presented as non-current liabilities. Trade creditors are recognised initially at transaction price and subsequently measured at amortised cost using the effective interest method.

CREATIVE CRAWLEY CIO

NOTES TO THE FINANCIAL STATEMENTS (CONTINUED) FOR THE YEAR ENDED 31 MARCH 2023

1 Accounting policies (Continued)

Derecognition of financial liabilities

Financial liabilities are derecognised when the charity's contractual obligations expire or are discharged or cancelled.

1.9 Employee benefits

The cost of any unused holiday entitlement is recognised in the period in which the employee's services are received.

Termination benefits are recognised immediately as an expense when the charity is demonstrably committed to terminate the employment of an employee or to provide termination benefits.

2 Critical accounting estimates and judgements

In the application of the charity's accounting policies, the trustees are required to make judgements, estimates and assumptions about the carrying amount of assets and liabilities that are not readily apparent from other sources. The estimates and associated assumptions are based on historical experience and other factors that are considered to be relevant. Actual results may differ from these estimates.

The estimates and underlying assumptions are reviewed on an ongoing basis. Revisions to accounting estimates are recognised in the period in which the estimate is revised where the revision affects only that period, or in the period of the revision and future periods where the revision affects both current and future periods.

3 Donations and legacies

	Unrestricted funds	Restricted funds	Total	Unrestricted funds	Restricted funds	Total
	2023 £	2023 £	2023 £	2022 £	2022 £	2022 £
Donations and gifts	25,000	206,560	231,560	2,500	13,500	16,000
Government grants	-	6,000	6,000	-	-	-
	<u>25,000</u>	<u>212,560</u>	<u>237,560</u>	<u>2,500</u>	<u>13,500</u>	<u>16,000</u>

4 Charitable activities

	Charitable activities income 2023 £	Charitable activities income 2022 £
Services provided under contract	117,075	35,746
Other income	5,579	-
	<u>122,654</u>	<u>35,746</u>

CREATIVE CRAWLEY CIO

NOTES TO THE FINANCIAL STATEMENTS (CONTINUED) FOR THE YEAR ENDED 31 MARCH 2023

5 Investments

	Unrestricted funds	Total
	2023 £	2022 £
Interest receivable	85	-
	<u>85</u>	<u>-</u>

6 Raising funds

	Unrestricted funds	Restricted funds	Total	Total
	2023 £	2023 £	2023 £	2022 £
<u>Fundraising and publicity</u>				
Other fundraising costs	1,313	2,288	3,601	-
	<u>1,313</u>	<u>2,288</u>	<u>3,601</u>	<u>-</u>

CREATIVE CRAWLEY CIO

NOTES TO THE FINANCIAL STATEMENTS (CONTINUED) FOR THE YEAR ENDED 31 MARCH 2023

7 Charitable activities

	Charitable activities expenditure 2023 £	Charitable activities expenditure 2022 £
Staff costs	17,036	-
Artist fees and expenses	56,126	4,825
General production costs	9,994	138
Production materials and equipment	19,297	189
Venue hire	779	80
Freelance staff costs	120,623	10,000
Recruitment, training and development	1,385	99
Advertising and marketing	11,702	-
Evaluation	10,170	-
Freelance crew and production support	4,217	-
Hospitality and catering	676	-
Project travel, accommodation and subsistence	2,298	-
Payroll fees	240	-
	<hr/> 254,543	<hr/> 15,331
Share of support costs (see note 8)	5,308	32
Share of governance costs (see note 8)	1,900	1,500
	<hr/> 261,751	<hr/> 16,863
Analysis by fund		
Unrestricted funds	3,747	1,532
Restricted funds	258,004	15,331
	<hr/> 261,751	<hr/> 16,863

CREATIVE CRAWLEY CIO

NOTES TO THE FINANCIAL STATEMENTS (CONTINUED) FOR THE YEAR ENDED 31 MARCH 2023

8 Support costs

	Support costs	Governance costs	2023	Support costs	Governance costs	2022
	£	£	£	£	£	£
Insurance	1,776	-	1,776	-	-	-
IT equipment and software costs	1,289	-	1,289	-	-	-
Printing, postage and stationery	2	-	2	-	-	-
Sundry expenses	288	-	288	-	-	-
Bank fees	73	-	73	32	-	32
Subscriptions	1,385	-	1,385	-	-	-
Travel, accommodation and subsistence	495	-	495	-	-	-
Accountancy and Independent examination fees	-	1,900	1,900	-	1,500	1,500
	<u>5,308</u>	<u>1,900</u>	<u>7,208</u>	<u>32</u>	<u>1,500</u>	<u>1,532</u>
Analysed between Charitable activities	<u>5,308</u>	<u>1,900</u>	<u>7,208</u>	<u>32</u>	<u>1,500</u>	<u>1,532</u>

Governance costs includes payments to the accountants of £950 + vat (2022: £750 + vat) for accountancy fees and £950 + vat (2022: £750 + vat) for independent examination fees. Payroll fees of £240 (2022: £nil) were also paid to the accountants in the year.

9 Trustees

None of the trustees (or any persons connected with them) received any remuneration or benefits from the charity during the year or prior year.

10 Employees

The average monthly number of employees during the year was:

	2023 Number	2022 Number
	<u>1</u>	<u>-</u>
Employment costs	2023 £	2022 £
Wages and salaries	<u>17,036</u>	<u>-</u>

There were no employees whose annual remuneration was more than £60,000.

CREATIVE CRAWLEY CIO

NOTES TO THE FINANCIAL STATEMENTS (CONTINUED) FOR THE YEAR ENDED 31 MARCH 2023

11 Taxation

The charity is exempt from tax on income and gains falling within section 505 of the Taxes Act 1988 or section 252 of the Taxation of Chargeable Gains Act 1992 to the extent that these are applied to its charitable objects.

12 Debtors

	2023 £	2022 £
Amounts falling due within one year:		
Other debtors	111,437	-

13 Creditors: amounts falling due within one year

	Notes	2023 £	2022 £
Other taxation and social security		-	12,160
Deferred income	14	-	29,269
Trade creditors		8,450	419
Other creditors		20,105	-
Accruals and deferred income		1,900	1,500
		30,455	43,348

14 Deferred income

	2023 £	2022 £
Other deferred income	-	29,269

Deferred income relates to income received in the previous period that was for projects for this year, and is included in the financial statements as follows:

	2023 £	2022 £
Deferred income is included within:		
Current liabilities	-	29,269
Movements in the year:		
Deferred income at 1 April 2022	29,269	-
Released from previous periods	(29,269)	-
Resources deferred in the year	-	29,269
Deferred income at 31 March 2023	-	29,269

CREATIVE CRAWLEY CIO

NOTES TO THE FINANCIAL STATEMENTS (CONTINUED) FOR THE YEAR ENDED 31 MARCH 2023

15 Restricted funds

The income funds of the charity include restricted funds comprising the following unexpended balances of donations and grants held on trust for specific purposes:

	Movement in funds			Movement in funds			Transfers	Balance at
	Incoming resources	Resources expended	Balance at 1 April 2022	Incoming resources	Resources expended	Balance at 31 March 2023		
	£	£	£	£	£	£	£	£
Arts Council England - Enliven	13,500	-	13,500	1,500	(15,000)	-	-	-
Crawley Town Centre - Enliven	30,746	(15,232)	15,514	122,654	(129,600)	(8,568)	-	-
Crawley Borough Council - Enliven	5,000	-	5,000	-	(5,000)	-	-	-
Arts Council England - Creative Playground	-	(99)	(99)	175,000	(80,632)	-	-	94,269
ACE National Lottery Project Grants - Crawley Creatives	-	-	-	30,060	(30,060)	-	-	-
Crawley Borough Council - Shared Prosperity Fund	-	-	-	6,000	-	-	-	6,000
	49,246	(15,331)	33,915	335,214	(260,292)	(8,568)		100,269

CREATIVE CRAWLEY CIO

NOTES TO THE FINANCIAL STATEMENTS (CONTINUED) FOR THE YEAR ENDED 31 MARCH 2023

16 Analysis of net assets between funds

	Unrestricted funds 2023 £	Restricted funds 2023 £	Total 2023 £	Unrestricted funds 2022 £	Restricted funds 2022 £	Total 2022 £
Fund balances at 31 March 2023 are represented by:						
Current assets/(liabilities)	29,561	100,269	129,830	968	33,915	34,883
	<u>29,561</u>	<u>100,269</u>	<u>129,830</u>	<u>968</u>	<u>33,915</u>	<u>34,883</u>

17 Related party transactions

There were no disclosable related party transactions during the year or in the prior period.