



The RAFT Foundation Annual Report 2024

Registered Charity Number 1191272





Annual Report 01-1-2024 to 31-12-2024

Charity name: The RAFT Foundation (TRF)

Charity registration number: 1191272

1. Summary of the purposes of the charity as set out in its governing document

1.1 THE RELIEF OF FINANCIAL HARDSHIP AMONGST PEOPLE IN ROSSENDALE AND THE SURROUNDING AREA BY:

A) PROVIDING EMERGENCY FOOD, ESSENTIAL TOILETRIES, AND HOUSEHOLD ITEMS TO INDIVIDUALS AND FAMILIES IN NEED

B) SUCH OTHER MEANS, INCLUDING (BUT NOT LIMITED TO) THE PROVISION OF SUPPORT OR SIGNPOSTING TO RELEVANT INFORMATION AND OTHER ADVISORY SERVICES

2. Summary of the main activities in relation to those purposes

2.1 The Raft Foundation is a crisis support foodbank and signposting service. We operate from our single distribution centre in Rawtenstall, Lancashire and provide support to individuals and families within the community of Rossendale.

2.2 We **deliver** our food parcels **3 days per week**, 51 weeks of the year, but wherever severe crisis and emergency need for support exists, our volunteers do their best to deliver outside of these 3 core days. Volunteers **support** us across the full **7-day** period with the other days of the week spent sourcing, buying, collecting, sorting, and packing donated food for distribution.



2.3 We also work closely with over 40 local, regional, and national statutory, and third sector organisations that refer their clients to us for support. This referral system helps us to ensure the people we work with are actively engaged with professionals, who can assist them in recovery from their position of crisis. By offering a delivery service we also help ensure our food parcels can reach some of the most vulnerable members of our community who struggle to access food due to disability/mobility or mental health issues.

2.4 Each individual/family referred is directly contacted by RAFT the day before a delivery to ensure the request from the referral agency is appropriate and their details are correct. We ask the relevant questions to ensure we have sufficient information to meet the needs of everyone in the household, including pets. Parcels are adapted to support lifestyle choices such as vegetarianism and veganism, religious or cultural preferences such as Halal or Kosher, and they are also adapted to consider food allergies/intolerances, and in support of those without a permanent address who may be sofa surfing, or have no or limited access to refrigeration and cooking facilities.

2.5 Enough food for 3 meals per day, for 7 days is provided to each member of the household. We do not differentiate parcel content for families with children. Parcel food content remains the same, whether it is term time, school holidays or if the child/children are in receipt of free school meals and we also adapt parcels accordingly to consider the needs of parents, grandparents, and other care givers whose children, grandchildren or otherwise may only be visiting for a short period of time.

2.6 The food element is a combination of ambient and non-ambient food products, but we aim to provide as healthy and nutritionally balanced food parcel as possible. In addition to food, we also provide personal hygiene products, sanitary products, nappies, and household cleaning products. Furthermore, we add donated flowers and seasonal gifts for Mother's/Father's Day, Easter/Passover, Christmas, and Eid as well as birthday gifts, advent calendars, and new baby welcome packs etc.



2.7 We also make great use of redistributed food, toiletries, flowers etc. that would otherwise go to waste via our ongoing relationships with M&S, ALDI and LIDL via Neighbourly, Warburtons, Other local supermarkets, and stores.

2.8 Our volunteers continue to provide our service to our community. We have continually adapted and refreshed our handling, processing, delivery and hygiene policies and protocols to reflect current government advice and guidance whilst continuing to ensure the personal safety of each of our volunteers and the safe handling of food.

3. Statement on public benefit

3.1 All TRF trustees are aware of the need to ensure that activities are focused on ensuring that we provide a public benefit to the people of Rossendale.

4. Volunteer Contributions

4.1 TRF is run by two part time employees and 32 volunteers, achievements listed in the Achievements and the section below are through volunteers giving their time, skills, and resources (such as use of their vehicles). The RAFT Foundation volunteers & staff all hail from the local community and believe in supporting their neighbours during times of hardship and difficulty. Along with kind donations of food from the public, their hard work, dedication, and caring natures are what help add a sprinkle of hope to the crisis food parcels they deliver. Without our fantastic volunteers there would be no RAFT Foundation, and we are grateful for their kindness, generosity, and support in delivering this charitable service



4.2 Trustee board members want to thank everyone for all their many contributions, always going above and beyond. There are so many tasks that keep RAFT able to respond to our neighbours experiencing hard

times. There are so many parts to the jigsaw, some very visible and some hidden away behind the scenes and we want to recognise the many volunteer roles and tasks that are carried out by all:



- Collection of donations and supplies at all hours of the day, on weekends, school, and bank holidays
- Sorting and stock rotation of donations and purchases, both ambient and fresh
- Making up parcels, both in advance and on delivery days
- Taking those parcels to people across Rossendale
- Sharing excess donations with a range of partners throughout the valley
- Ongoing organising, tidying, and cleaning of the unit, contributing to our 5* hygiene rating and creating a more pleasant, less stressful, and safer working environment
- Receiving and dealing with referrals both within normal operating times and as emergencies
- Daily Unit Leaders seeing it all runs smoothly
- Continuing administration tasks ensuring we are responsive to need, respond to referrals in a timely manner and forward referrals to other support organisations as needed. This is alongside signposting, which enables people to retain some control and autonomy over often extremely difficult situations. This also ensures we stay in timely contact with Partner organisations and donors
- Regular posts to social media sites, sharing of posts and timely responses to queries and messages received
- Maintaining many different relationships – with referrers, Rossendale Borough Council, churches, schools, corporate donors, supermarkets, other charities and food groups, and private fundraisers
- Sourcing, sorting, and arranging delivery of non-food items and household goods
- All the tasks involved in the many little extras for Easter, Christmas, Mother's and Father's days, and Eid



- Organising and running the improved, auditable, Cash First/Supermarket voucher schemes
- Maintenance and further development of our financial systems
- Creating and developing the referral data collection system to ensure timely reporting of numbers to trustees and relevant external organisations (such as funding providers and national bodies), provide oversight for potential overuse/misuse of TRF services, allow analysis of patterns to enable better decision making
- Working together to change ways of operating to improve efficiency and, in particular, to make the organisation more resilient with actions such as ensuring every role can be covered by several people, and working in sub-teams to ensure coverage, for example the drivers' WhatsApp group
- Applying for, managing, and reporting on grant funding bids
- Managing the many Secretarial duties required of a charity
- Meeting our obligations as a registered charity and governance team



We would also like to thank the family, friends and neighbours of our volunteers who support them to do what they do.

4.3



4.4 There were 32 operational volunteers on roll during 2024.

We estimate the average number of operational volunteering hours per year at 24,000. This would equate to £274,560 at a Living Wage of £ 11.44 an hour

There were seven trustee volunteers during 2024, giving an average of 500 governance volunteer Hours.

Most trustees perform roles within both the governance and operational teams.



4.6 Five volunteers ended their volunteering with us, and we wish them all the best and extend our thanks for all their contributions.

4.7 The Raft Foundation is a wide and inclusive group and every year we are grateful for people in the various Rossendale communities who go above and beyond to help, whether that is folk donating regularly, when they can, or in response to our urgent needs call outs, Supermarket Community Champions and Pioneers donating food stock or supporting community token schemes and funding applications, school, church and friendship group collections, local business stock donations, Christmas tractor drives, reverse advent calendars and sports clubs running donation appeals and community group shares. Not to mention the fundraisers who have done Round-the-Hills walks, mountain hikes, held children's table-top sales, church car boot sales, local business donations, and signed up to Easy Fundraising.





5. Achievements and Performance

5.1 Move to new Premises

The trustees have been looking for a number of years for new premises. Firstly to reduce the high rent we were paying and secondly to have more room to develop our activities.

We were fortunate to move to a lot larger premises on 1st January 2024 and obtain 3 months free rent thanks to the support of Havencare and their proprietors John and Dawn Winfield.

We now have a lot more room to undertake all our activities and better facilities for our volunteers.

5.2 Achievements

TRF, through its volunteers: -

- In 2024 we delivered to
 - 3,248 people in 1,217 families, and a total of 64,601 meals.
 - 144 lots of nappies and pull ups.
 - Supplies for 1,111 pets during 2024.
- Continued our active relationships with a wide range of local community, health and well-being groups and other community organisations in the Rossendale Connected Partnership, working for the good of Rossendale folk. Larger local statutory partners included Rossendale Borough Council Communities Team, GPs and Practice Managers, mental health workers, social prescribers, probation services, addiction support organisations, Citizens Advice and Rossendale Leisure Trust. Also included were more regional statutory partners based within Lancashire County Council



- Shared resources with the valley-wide Rossendale Food Box Scheme, Positive Start Food Group, and community food share groups at Haslingden Community Link, to aid access to food provision and support neighbours with different levels of need



- Produced our third Charity Commission required Annual Report for January 2023 to December 2023.
- Maintained our 5-star food hygiene rating.
- Continued working with IFAN to raise awareness of food poverty, and by providing ongoing data, supporting their campaigns and calls to the government to address this issue.
- Worked with Rossendale Borough Council (RBC) to deliver food parcels to those in financial crises as well as general hardship due to cost-of-living increases
- Delivered vouchers, Comfort Schemes, supporting neighbours receiving parcels during more challenging and expensive times e.g. at Christmas, Easter, and school holidays.
- Worked with a local vegetable supplier who we use on a weekly basis to provide fresh fruit and vegetables in our food parcels and also arranged a Christmas hamper scheme which contained everything required for a Christmas breakfast and dinner on Christmas day.
- Produced specific packs either to use surpluses such as large quantities of donated baking chocolate and surplus pasta, purchased from specific grants we received for seasonal events such as warming soup packs, blankets, hot water bottles and flasks, slow cookers, and ingredients which then were included to provide a main meal and dessert ingredients with recipes and instructions to cook them, created by staff and volunteers, Back to school packs for families struggling to provide those basic items.



- During an unprecedented increase in demand due to fuel and food price increases, our Christmas focus was on helping as many individuals and families as possible across Rossendale with food and warmth, providing hot water bottles, Blankets, Slow cookers, advent calendars and Christmas treats.
- Received £1000 from The Rossendale Rotary to specifically purchase toys, value of up to £30.00 per toy to be allocated to families with children who would be financially struggling to release some of the burden on families over the December month to provide a little something for children to have to open on Christmas day. After securing the purchase of the toys (bought mainly from B & M on the 2 for £20 and Argos 3 for £30.00) some of The Rossendale Rotary club came and assisted on the delivery of toys to struggling families.



- Supported the Christmas Rossendale Shine on Project, and CAP both based at Kay Street Baptist Church, who delivered three course meals plus gifts. Raft provided donations of advent calendars and selection boxes for inclusion in their gift bags
- We continued to support the Rossendale Shine On project helping individuals experiencing isolation and loneliness, by promoting befriending and emotional well-being and sharing our supermarket surplus collections on a weekly basis throughout the rest of the year.
- Made regular weekly donations of surplus fresh food to SafeSpace, the Rossendale Food Boxes scheme, Positive Action in the Community (PAC), Young Homeless Service, and Shine On, The Unity Fridge, Bacup Trinity Baptist and Haslingden Community Link.
- Delivered masses of donated fresh flowers, potted plants, and spring bulbs with our parcels as well as to Nursing and Care Homes and local community groups across Rossendale to brighten staff and residents' days, and we shared with other community projects too such as Rossendale Food Box

Scheme, Haslingden Community Link, SafeSpace, Irwell Vale Community Group, Friends of Haslingden Cemetery and Civic Pride to name a few.



- Continued to provide seasonal treats such as Easter eggs, Mother's Day Gifts (including gifts for single Fathers), Father's Day Gifts, Birthday gifts
- Provided activity packs and books for kids during school holidays
- Provided back to school stationery packs for those children and adults returning to school, college and university
- Provided slow cookers, microwaves, kettles, toasters, and cook-books to people with reduced means of preparing food economically
- Provided blankets, socks, scarves, and hot water bottles to help people stay warm despite increasing fuel costs, following the principal of 'heat the person, not the room'
- Provided new baby welcome packs to Knitting Smiles for East Lancashire who run this project and put the boxes together
- Using our social media visibility to promote other local organisations' activities and appeals, and share information on support available
- Promoted Challenge Poverty Week England 2024.
- Expanded public donation points
- Contributed to reduced food waste by working with Neighbourly to redistribute excess food.
- Worked with the Community Champions at our local ASDA, TESCO and Co-Op stores and held in-store stalls to raise awareness of our charity and food poverty, promote support and donations.



- Completed our work with RBC on Worrying About Money leaflet and launched this in conjunction with IFAN (Independent Food Aid Network)



6. Financial Review

6.1

See Appendix 1

Statement on TRF policy for holding reserves

6.2 The reserves prior to 2020 were historically extremely low, with TRF operating very much hand-to-mouth from its inception, insecurely dependant on the generosity of a small core of people and organisations making cash donations, some regularly and some intermittently, to cover ever-increasing overhead costs, especially rent. This meant that RAFT was always at risk of not being able to meet these costs.

This lack of financial reserves is a position not recommended by the Charity Commission, which expects trustees to pay due attention to a charity's financial sustainability.

6.3 Due to continuing support from Rossendale Borough Council in 2024, using government funds allocated to assist in ensuring access to food for people in financial crisis, and the overwhelming generosity of the Rossendale community, the reserves are now still currently in a much healthier position, in addition to having met the needs of 3248 people over this period of time. Without all their help we would not have been able to continue to meet our fixed costs or have been in a position to continue to provide Rossendale with a much-needed food bank service.

6.4 Finally, the trustees have a responsibility (as expected by the Charity Commission) to maintain the viability of the TRF whilst ensuring we deliver current services and the changing needs of our community. The TRF's model is now sustainable and continuous, with the help of ongoing personal and company donations from our local community supporters.

Principal sources of funds

6.5 The principal sources of funds include: -

- Public donations of actual goods
- Public donations of money via collecting tins, online donations, and bank transfers
- Public fundraising activities such as gymathons and Christmas tractor collections
- Local churches, schools, groups & businesses donations
- Local supermarket donations and surplus food sharing
- Grant bids applied for successfully
- Cost-of-Living specific funding from a variety of foundations, supermarket schemes, and local government support.

Trustees maintain due diligence regarding financial donations, and we are members of the Fundraising Regulator. We always check sources of financial donations to make sure they are above board and to offer thanks accordingly.

Investment policy and objectives

6.6 Our policy is to hold two years' operating costs in the current account for immediate access, and any remaining funds in an appropriate interest earning account for longer term needs. The latter is still being researched due to ongoing volatility in financial sectors. Our key considerations will be rate of return on investment, accessibility, security of investment, and ethicality of investment.

A description of the principal risks facing the charity

6.7 The principal risks facing the charity, as common with most small charities are: -

- Reduction in or loss of donation streams
- Increased costs of running TRF, the main outgoing of which is the lease of premises, the purchase of essential insurance, utilities costs, and equipment (e.g. commercial fridges & freezers, transportation cool boxes, cleaning equipment, carrier bags), and to provide volunteers with a safe base to operate from and in which to store and manage



food supplies.

- The charity's volunteer-only basis, whilst meaning we operate very frugally, could, due to the nature of volunteering, leave us vulnerable to a few risks, including:
 - loss of people in key roles
 - loss of those who give many hours each week
 - potential for volunteers not being available on any given day
 - difficult-to-allocate tasks (either due to skills needed or time demands) leading to overload on the same few people
 - burnout of volunteers
 - ageing profile of volunteers generally
 - difficulty in delivering any potentially bigger vision for the charity
- The charity also relies heavily on the use of volunteers' own vehicles and fuel, some of them to a substantial degree. It would severely impact deliveries if this generosity were not available.

6.8 Reviewing the year against these risks, notable points were:

- Donation streams remained steady, and the trustees are grateful for the substantial support of Rossendale Borough Council in the costs of delivering our service
- Costs increased substantially due to, inflationary pressures on food purchases, and an increase in premises & other fixed costs.
- Several changes in working practices were implemented to improve resilience in volunteer roles. This is ongoing.
- We implemented a volunteer expenses policy to support drivers' fuel costs, particularly for drivers who incur substantial mileage on the foodbank's behalf. The massive rise in fuel costs experienced during 2022 resulted in an increase in volunteer expenses claimed because of the combined effect of rising fuel costs, requirement for volunteers to collect surplus food and deliver to people and general rise in demand for TRF service.
- This is still in place.

Structure, Governance, and Management

7.1 The Raft Foundation is a Charitable Incorporated Organisation – Foundation model.

Trustee selection methods including details of any constitutional provisions e.g. election to post or name of any person or body entitled to appoint one or more trustees

7.2 Trustees are recruited via a visit to the operational unit, initial discussions with the Chair, an interview with fellow trustees, and appointment, as minutes, at a general management committee meeting. This process is to be augmented by asking any potential trustee who doesn't currently volunteer with TRF, to also work alongside other trustees (for example on a specific project) for a period, and to complete trustee responsibilities and duties training modules.

The intention is for both parties to ensure a good working match, and for potential trustees to be fully aware of the demands of the role.

Policies and procedures adopted for the induction and training of trustees

7.3 At this time, TRF meets the minimum required by the Charity Commission in sharing the initial guidance on the responsibilities of a trustee as given by the Charity Commission and via the expression of interest letters.

Whilst developing our induction and training package we have also been providing access to governance and trustee specific training via the organisations we have joined such as Charity Excellence, IFAN, ICO, NCVO, BPRCVS and Fundraising Regulator. We have also referred to specialist support available via Association of Chairs and ICSA, where necessary, too.

The charity's organisational structure and any wider network with which the charity works

7.4 The development of both trustee and operational roles is an ongoing piece of work, Cascading through the organisation, to increase organisational resilience and sustainability,

improve working practices and ensure the volunteer experience is rewarding and in balance



7.5 Reference and Administrative details

Charity name	The Raft Foundation
Other name the charity uses	N/A
Registered charity number	1191272
Charity's principal address	195a, Bury Road Rawtenstall BB4 6DJ

7.6 Names of the charity trustees who manage the charity

Trustee name	Office	Dates acted if not for whole year	Name of body entitled to appoint trustee
Janice Johnson	Chair	From 2023	Trust Board
Mark Stapleton	Vice chair	From 2023	Trust Board
Gerard Greenhalgh	Treasurer	From 2020	Trust Board
Helen Jeeves	Secretary	Until June 2023	Trust board
Michelle Jones	Trustee	Until April 2023	Trust Board
Stephen Hall	Minute taker	From April 2023	Trust Board
Nick Subasic	Trustee	From April 2023	Trust Board
Gill Heaton	Trustee	From April 2023	Trust board
Paul Heaton	Trustee	From April 2023	Trust Board

7.7 Names and addresses of advisers

Type of adviser	Name	Address
Legal	PD Greenhalgh Solicitors	6-10 Edward St, Glossop SK13 7AF
Accountant	Pierce Business Advisory & Accountancy Group	70 Chorley New Rd, Bolton BL1 4BY

Exemptions from disclosure

7.8 None

7.9 Declarations



The trustees declare that they have approved the trustees’ report above. Signed on behalf of the charity’s trustees.

Name	Position	Signature	Date
Janice Johnson	Chair		
Gerard Greenhalgh	Treasurer		



Appendix 1

Income and Expenditure Statement as at 31st December 2024

THE RAFT FOUNDATION

CHARITABLE INCORPORATED ORGANISATION STATEMENT OF FINANCIAL ACTIVITIES (INCLUDING INCOME AND EXPENDITURE ACCOUNT)

FOR THE PERIOD 1 JANUARY 2024 TO 31 DECEMBER 2024

	Unrestricted Fund	Restricted Fund	Total Period Ended 31.12.23
Income:			
Voluntary Donations	59,169		35,122
Grants		<u>1,780</u>	51,633
Total Income	<u>59,169</u>	<u>1,780</u>	<u>86,755</u>
		0	
Expenditure:			
Expenditure on charitable activities	<u>74,413</u>	<u>1,636</u>	<u>70,042</u>
Total expenditure	<u>74,413</u>	<u>1,636</u>	<u>70,042</u>
Net Income/Expenditure for the period	(15,244)	144	16,713
Transfer between funds	144	-144	0
Balance brought forward 01/01/2024	<u>152,174</u>		<u>135,461</u>
Balance carried forward 31/12/2024	<u>137,074</u>	<u>0</u>	<u>152,174</u>

Of the balance carried forward:

Working Capital:	£77,074
Reserves for Capital Investment:	£60,000
Total:	<u>£137,074</u>



APPENDIX 2 VOLUNTEERS







THE RAFT FOUNDATION

CHARITABLE INCORPORATED ORGANISATION

Registered Charity Number: 1191272

ANNUAL REPORT AND FINANCIAL STATEMENTS
FOR THE YEAR ENDED 31 DECEMBER 2024

THE RAFT FOUNDATION
CHARITABLE INCORPORATED ORGANISATION
REPORT AND FINANCIAL STATEMENTS
FOR THE YEAR ENDED 31 DECEMBER 2024

CONTENTS	PAGE
Charity Information	1
Trustees' Report	2
Independent Examiners' Report	3
Accounting Policies	4
Statement of Financial Activities	5
Balance Sheet	6
Notes to the Financial Statements	7

THE RAFT FOUNDATION**CHARITABLE INCORPORATED ORGANISATION****CHARITY INFORMATION****FOR THE YEAR ENDED 31 DECEMBER 2024*****TRUSTEES:***

Janice Johnson (Chair)
Mark Stapleton (Vice chair)
Stephen Hall (Secretary) (Appointed 13/06/2024)
Ged Greenhalgh (Treasurer)
Gillian Heaton (Appointed 13/06/2024)
David Heaton (Appointed 13/06/2024)
Nicholas Subasic (Appointed 13/06/2024)

REGISTERED CHARITY NUMBER:

1191272

PRINCIPAL SERVICE ADDRESS:

195A Bury Road
Rawtenstall
Rossendale
BB4 6DJ

BANKERS:

Nat West Bank
28 Bank Street
Rawtenstall
BB4 8TS

ACCOUNTANTS:

Pierce (Bolton) Limited
Hazlemere
70 Chorley New Road
Bolton
BL1 4BY

INDEPENDENT EXAMINER:

Mr A Newton ACA
Pierce (Bolton) Limited
Chartered Accountants
Hazlemere
70 Chorley New Road
Bolton
BL1 4BY

THE RAFT FOUNDATION

CHARITABLE INCORPORATED ORGANISATION

REPORT OF THE TRUSTEES

FOR THE YEAR ENDED 31 DECEMBER 2024

STRUCTURE, GOVERNANCE AND MANAGEMENT

The Raft Foundation formally became a charity and was registered as a charitable incorporated organisation in the North West of England on 14 September 2020 and is governed by its constitution. The Charity registered number is 1191272. The Charity is non-profit making and its trustees are volunteers.

The trustees are appointed by the members of the organisation at the Annual General Meeting. Trustees have the power under the governing documents to co-opt individuals who support the objects of the organisation to fill vacancies on the Board of Trustees.

As part of their induction, any new trustees are provided with information about the charity, the management structure, its history and working practices. In addition, they are also provided with information from the Charity Commission regarding the duties and responsibilities of trustees.

OBJECTIVES AND ACTIVITIES

The Raft Foundation was established to help provide relief of financial hardship amongst people in Rossendale and the surrounding areas by providing emergency food, essential toiletries, household items and other items gifted to the organisation for the benefit of individuals and families in need. Also the provision of such other means, including (but not limited to) the provision of support or signposting to relevant information and other advisory services are offered by the charity.

PUBLIC BENEFIT

We have referred to the guidance in the Charity Commission's general guidance on public benefit when reviewing our aims and objectives and in planning our future activities. In particular the trustees have considered the activities of the Charity as set out in the 'Objectives and Activities' section above, and the 'Achievements and Performance in the Year' and assessed their future plans. They are satisfied that the criteria for public benefit are comprehensively achieved.

VOLUNTEERS

The RAFT Foundation is run by two part time employees and 32 volunteers, achievements listed in the Achievements and the section below are through volunteers giving their time, skills, and resources (such as use of their vehicles). The RAFT Foundation volunteers & staff all hail from the local community and believe in supporting their neighbours during times of hardship and difficulty. Along with kind donations of food from the public, their hard work, dedication, and caring natures are what help add a sprinkle of hope to the crisis food parcels they deliver. Without our fantastic volunteers there would be no RAFT Foundation, and we are grateful for their kindness, generosity, and support in delivering this charitable service

THE RAFT FOUNDATION

CHARITABLE INCORPORATED ORGANISATION

REPORT OF THE TRUSTEES (CONTINUED)

FOR THE YEAR ENDED 31 DECEMBER 2024

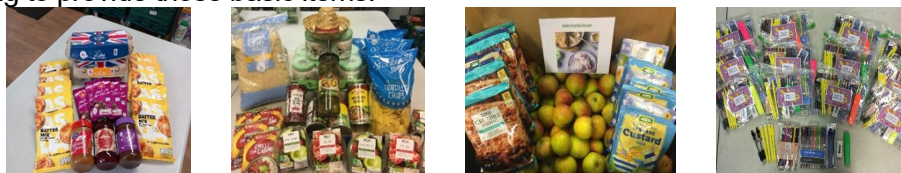
ACHIEVEMENTS AND PERFORMANCE IN THE YEAR

The Raft Foundation, through its volunteers:-

- During 2024 we delivered to
 - 3,248 people in 1,217 households and a total of 64,601 meals.
 - 144 lots of nappies and pull ups.
 - Supplies for 1,111 pets.
- Continued our active relationships with a wide range of local community, health and well-being groups and other community organisations in the Rossendale Connected Partnership, working for the good of Rossendale folk. Larger local statutory partners included Rossendale Borough Council Communities Team, GPs and Practice Managers, mental health workers, social prescribers, probation services, addiction support organisations, Citizens Advice and Rossendale Leisure Trust. Also included were more regional statutory partners based within Lancashire County Council



- Shared resources with the valley-wide Rossendale Food Box Scheme, Positive Start Food Group, and community food share groups at Haslingden Community Link, to aid access to food provision and support neighbours with different levels of need
- Produced our third Charity Commission required Annual Report for January 2023 to December 2023.
- Maintained our 5-star food hygiene rating.
- Continued working with IFAN to raise awareness of food poverty, and by providing ongoing data, supporting their campaigns and calls to the government to address this issue.
- Worked with Rossendale Borough Council (RBC) to deliver food parcels to those in financial crises as well as general hardship due to cost-of-living increases
- Delivered vouchers, Comfort Schemes, supporting neighbours receiving parcels during more challenging and expensive times e.g. at Christmas, Easter, and school holidays.
- Worked with a local vegetable supplier who we use on a weekly basis to provide fresh fruit and vegetables in our food parcels and also arranged a Christmas hamper scheme which contained everything required for a Christmas breakfast and dinner on Christmas day.
- Produced specific packs either to use surpluses such as large quantities of donated baking chocolate and surplus pasta, purchased from specific grants we received for seasonal events such as warming soup packs, blankets, hot water bottles and flasks, slow cookers, and ingredients which then were included to provide a main meal and dessert ingredients with recipes and instructions to cook them, created by staff and volunteers, Back to school packs for families struggling to provide those basic items.



THE RAFT FOUNDATION

CHARITABLE INCORPORATED ORGANISATION

REPORT OF THE TRUSTEES (CONTINUED)

FOR THE YEAR ENDED 31 DECEMBER 2024

- During an unprecedented increase in demand due to fuel and food price increases, our Christmas focus was on helping as many individuals and families as possible across Rossendale with food and warmth, providing hot water bottles, Blankets, Slow cookers, advent calendars and Christmas treats.
- Received £1000 from The Rossendale Rotary to specifically purchase toys, value of up to £30.00 per toy to be allocated to families with children who would be financially struggling to release some of the burden on families over the December month to provide a little something for children to have to open on Christmas day. After securing the purchase of the toys (bought mainly from B & M on the 2 for £20 and Argos 3 for £30.00) some of The Rossendale Rotary club came and assisted on the delivery of toys to struggling families.



- Supported the Christmas Rossendale Shine on Project, and CAP both based at Kay Street Baptist Church, who delivered three course meals plus gifts. Raft provided donations of advent calendars and selection boxes for inclusion in their gift bags
- We continued to support the Rossendale Shine On project helping individuals experiencing isolation and loneliness, by promoting befriending and emotional well-being and sharing our supermarket surplus collections on a weekly basis throughout the rest of the year.
- Made regular weekly donations of surplus fresh food to SafeSpace, the Rossendale Food Boxes scheme, Positive Action in the Community (PAC), Young Homeless Service, and Shine On, The Unity Fridge, Bacup Trinity Baptist and Haslingden Community Link.
- Delivered masses of donated fresh flowers, potted plants, and spring bulbs with our parcels as well as to Nursing and Care Homes and local community groups across Rossendale to brighten staff and residents' days, and we shared with other community projects too such as Rossendale Food Box Scheme, Haslingden Community Link, SafeSpace, Irwell Vale Community Group, Friends of Haslingden Cemetery and Civic Pride to name a few.



- Continued to provide seasonal treats such as Easter eggs, Mother's Day Gifts (including gifts for single Fathers), Father's Day Gifts, Birthday gifts
- Provided activity packs and books for kids during school holidays
- Provided back to school stationery packs for those children and adults returning to school, college and university
- Provided slow cookers, microwaves, kettles, toasters, and cook-books to people with reduced means of preparing food economically.

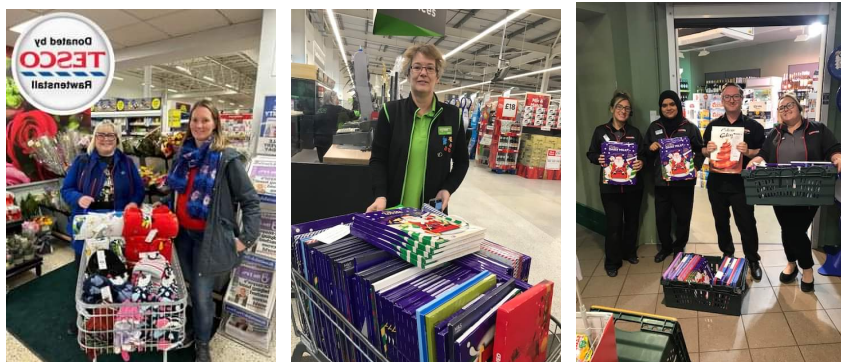
THE RAFT FOUNDATION

CHARITABLE INCORPORATED ORGANISATION

REPORT OF THE TRUSTEES (CONTINUED)

FOR THE YEAR ENDED 31 DECEMBER 2024

- Provided blankets, socks, scarves, and hot water bottles to help people stay warm despite increasing fuel costs, following the principal of 'heat the person, not the room'
- Provided new baby welcome packs to Knitting Smiles for East Lancashire who run this project and put the boxes together
- Using our social media visibility to promote other local organisations' activities and appeals, and share information on support available
- Promoted Challenge Poverty Week England 2024.
- Expanded public donation points
- Contributed to reduced food waste by working with Neighbourly to redistribute excess food.
- Worked with the Community Champions at our local ASDA, TESCO and Co-Op stores and held in-store stalls to raise awareness of our charity and food poverty, promote support and donations.



- Completed our work with RBC on Worrying About Money leaflet and launched this in conjunction with IFAN (Independent Food Aid Network).

RESERVES POLICY

It is the policy of the Charity to maintain unrestricted funds, which are free reserves of the Charity, at a level which as a minimum equates to approximately twelve months operating expenditure. A reserve in the order of £50,000 is considered sufficient since the Charity has little in the way of overheads and this would allow the Charity to react to changes in funding in a constructive manner.

FINANCIAL REVIEW

	£
The deficit for the period was	(15,100)
To which is added the surplus brought forward	<u>152,174</u>
Leaving a surplus carried forward of	<u><u>137,074</u></u>

THE RAFT FOUNDATION

CHARITABLE INCORPORATED ORGANISATION

REPORT OF THE TRUSTEES (CONTINUED)

FOR THE YEAR ENDED 31 DECEMBER 2024

TRUSTEES

The Trustees who served during the year are listed below:

Janice Johnson	
Ged Greenhalgh	
Mark Stapleton	
Helen Jeeves	(resigned 10 April 2024)
Michelle Jones	(resigned 10 April 2024)
Gillian Heaton	
David Heaton	
Nicholas Subasic	
Stephen Hall	

TAXATION

The Trustees are of the opinion that as a charity the organisation will be exempt from taxation and will be granted exemption by the Inland Revenue under the provisions of section 505 of the Income and Corporation Taxes Act 1988.

STATEMENT OF TRUSTEES' RESPONSIBILITIES

The trustees are responsible for preparing the Trustees' Report and the financial statements in accordance with applicable law and United Kingdom Accounting Standards (United Kingdom Generally Accepted Accounting Practice).

The law applicable to charities in England & Wales requires the trustees to prepare financial statements for each financial year, which give a true and fair view of the state of affairs of the charity and of the incoming resources and application of resources of the charity for that period. In preparing these financial statements the trustees are required to:

- Select suitable accounting policies and then apply them consistently;
- Observe the methods and principles in the Charities SORP;
- Make judgements and estimates that are reasonable and prudent;
- State whether applicable accounting standards have been followed, subject to any material departures disclosed and explained in the financial statements;
- Prepare the financial statements on the going concern basis unless it is inappropriate to presume that the charity will continue in operation.

The trustees are responsible for keeping adequate accounting records that disclose with reasonable accuracy at any time the financial position of the charity and enable them to ensure that the financial statements comply with the Charities Act 2011, the Charity (Accounts Reports) Regulations 2008 and trust deed. They are also responsible for safeguarding the assets of the charity and hence for taking reasonable steps for the prevention and detection of fraud and other irregularities.

THE RAFT FOUNDATION**CHARITABLE INCORPORATED ORGANISATION****REPORT OF THE TRUSTEES (CONTINUED)****FOR THE YEAR ENDED 31 DECEMBER 2024****INDEPENDENT EXAMINER**

A resolution will be proposed at the Annual General Meeting to appoint Mr Andrew Newton of Pierce (Bolton) Limited, Chartered Accountants and Registered Auditor, as the Independent Examiner to the Charity.

APPROVED BY THE TRUSTEES AND SIGNED ON BEHALF OF THE TRUSTEES BY:

Janice Johnson

Janice Johnson (May 12, 2026 12:27:57 GMT+1)

.....
Janice Johnson - Trustee

May 12, 2026

Date:

THE RAFT FOUNDATION

CHARITABLE INCORPORATED ORGANISATION

INDEPENDENT EXAMINER'S REPORT TO THE TRUSTEES OF THE RAFT FOUNDATION

FOR THE YEAR ENDED 31 DECEMBER 2024

I report to the charity trustees on my examination of the accounts of the charity for the year ended 31 December 2024 which are set out on pages 4 to 7.4.

Responsibilities and basis of report

As the charity's trustees you are responsible for the preparation of the accounts in accordance with the requirements of the Charities Act 2011 ('the Act').

I report in respect of my examination of the charity's accounts carried out under section 145 of the Act and in carrying out my examination I have followed all the applicable Directions given by the Charity Commission under section 145(5)(b) of the Act.

Independent examiner's statement

I have completed my examination. I confirm that no material matters have come to my attention in connection with the examination giving me cause to believe that in any material respect:

- 1) accounting records were not kept in respect of the charity as required by section 130 of the Act; or
- 2) the accounts do not accord with those records; or
- 3) the accounts do not comply with the applicable requirements concerning the form and content of accounts set out in the Charities (Accounts and Reports) Regulations 2008 other than any requirement that the accounts give a 'true and fair view' which is not a matter considered as part of an independent examination.

I have no concerns and have come across no other matters in connection with the examination to which attention should be drawn in this report in order to enable a proper understanding of the accounts to be reached.

Andrew Newton

Mr A Newton ACA
Pierce (Bolton) Limited
Chartered Accountants
Hazlemere
70 Chorley New Road
Bolton, BL1 4BY

May 13, 2026
Date:

THE RAFT FOUNDATION

CHARITABLE INCORPORATED ORGANISATION

ACCOUNTING POLICIES

FOR THE YEAR ENDED 31 DECEMBER 2024

The Raft Foundation is a charitable incorporated organisation.

The principal policies adopted in the Financial Statements are set out below.

BASIS OF ACCOUNTING

The financial statements have been prepared in accordance with Accounting and Reporting by Charities: Statement of Recommended Practice applicable to charities preparing their accounts in accordance with the Financial Reporting Standard applicable in the UK and Republic of Ireland (FRS 102) (effective 1 January 2020) – (Charities SORP (FRS 102)), the Financial Reporting Standard applicable in the UK and Republic of Ireland (FRS 102) and the Charities Act 2011.

The charity constitutes a public benefit entity as defined by FRS 102.

The financial statements are prepared in sterling, which is the functional currency of the charity.

FUND ACCOUNTING

Unrestricted funds represent the accumulated funds of the charity that are not subject to any restrictions regarding their use, and are available in the furtherance of the general objectives of the charity.

Designated funds are designated by the Trustees for particular purposes, and are also unrestricted, as these monies can be re-assigned by the Trustees if so required.

INCOME

All income is included in the statement of financial activities when the Charity is entitled to the income and the amount can be quantified with reasonable accuracy.

Income includes grants in respect of revenue and capital items. The charity receives donations of food and other household goods for distribution to beneficiaries. No value has been included in the accounts for these as the cost and practicality involved in undertaking a valuation is not considered to be justified by the benefit to the users of the accounts.

EXPENDITURE

Expenditure is recognised on an accrual basis as a liability is incurred.

- Charitable expenditure comprises those costs incurred by the Charity in the delivery of its activities and services for its beneficiaries. It includes both costs that can be allocated directly to such activities and those costs of an indirect nature necessary to support them.
- All costs are allocated between the expenditure categories on a basis designed to reflect the use of the resource. Costs relating to a particular activity are allocated directly, others are apportioned on an appropriate basis.

Grants payable are charged in the year when the offer is made except in those cases where the offer is conditional, such grants being recognised as expenditure when the conditions attaching are fulfilled. Grants offered subject to conditions which have not been met at the end of the year are noted as a commitment, but not accrued as expenditure.

TAXATION

No provision has been made for taxation as exemption from taxation is being granted by the Inland Revenue under the provisions of Section 505 of the Income and Corporation Taxes Act 1988.

THE RAFT FOUNDATION

CHARITABLE INCORPORATED ORGANISATION

ACCOUNTING POLICIES (CONTINUED)

FOR THE YEAR ENDED 31 DECEMBER 2024

VAT ACCOUNTING

The Charity is not liable to be registered for VAT. Irrecoverable VAT on expenditure is not analysed separately but attributed to the category of expenditure on which it is incurred.

TANGIBLE FIXED ASSETS

Fixed assets are stated at cost less accumulated depreciation.

Depreciation is provided on all tangible fixed assets at rates as follows:

Improvements to property	10% per annum	straight line method
Plant and machinery	25% per annum	reducing balance method
Computer equipment	25% per annum	straight line method

CASH AT BANK AND IN HAND

Cash at bank and in hand includes cash and short term highly liquid investments with a short maturity of three months or less from the date of acquisition or opening of the deposit or similar account.

CREDITORS AND PROVISIONS

Creditors and provisions are recognised where the charity has a present obligation resulting from a past event that will probably result in the transfer of funds to a third party and the amount due to settle the obligation can be measured or estimated reliably. Creditors and provisions are normally recognised at their settlement amount after allowing for any discounts due.

CASH FLOW STATEMENT

The Board of Trustees have elected to take advantage of the exemption under Update Bulletin 1 of the Charities SORP (FRS 102) not to prepare a cash flow statement.

GOING CONCERN

The trustees have reviewed the circumstances of The Raft Foundation and consider that adequate resources continue to be available to fund the activities of the charity for the foreseeable future. The trustees are of the view that the charity is a going concern.

GRANTS

Income from the government and other grants are recognised at fair value when the charity has entitlement after any performance conditions have been met, it is probable that the income will be received and the amount can be measured reliably. If entitlement is not met then these amounts are deferred.

JUDGEMENTS AND KEY SOURCES OF ESTIMATION UNCERTAINTY

The preparation of these financial statements require certain judgements, estimates and assumptions that affect the reported amounts of assets, liabilities, income and expenses. Estimates and judgements are continually evaluated and are based on historical experience and other factors, including expectations of future events that are believed to be reasonable under the circumstances.

THE RAFT FOUNDATION

CHARITABLE INCORPORATED ORGANISATION

STATEMENT OF FINANCIAL ACTIVITIES (INCLUDING INCOME AND EXPENDITURE ACCOUNT)

FOR THE YEAR ENDED 31 DECEMBER 2024

	Unrestricted Fund £	Restricted Fund £	Total Period End 31/12/2024 £	Unrestricted Fund 31/12/2023 £
Income:				
Voluntary donations	20,689	-	20,689	35,122
Grants	38,480	1,780	40,260	51,633
Total Income	59,169	1,780	60,949	86,755
Expenditure:				
Expenditure on charitable activities	74,413	1,636	76,049	70,042
Total Expenditure	74,413	1,636	76,049	70,042
Net income/(expenditure) for the period	(15,244)	144	(15,100)	16,713
Transfers	144	(144)	-	-
Balance brought forward 01/01/2024	152,174	-	152,174	135,461
Balance carried forward 31/12/2024	137,074	-	137,074	152,174

THE RAFT FOUNDATION

CHARITABLE INCORPORATED ORGANISATION

BALANCE SHEET

AS AT 31 DECEMBER 2024

	Note	As At 31/12/2024		As at 31/12/2023	
		£	£	£	£
FIXED ASSETS					
Tangible fixed assets	6		7,684		6,280
CURRENT ASSETS					
Cash at bank and in hand		134,096		146,694	
CREDITORS: AMOUNTS FALLING DUE WITHIN ONE YEAR	7				
		<u>(4,706)</u>		<u>(800)</u>	
NET CURRENT ASSETS			<u>129,390</u>		<u>145,894</u>
TOTAL ASSETS LESS CURRENT LIABILITIES			<u>137,074</u>		<u>152,174</u>
Represented By:					
FUNDS					
Restricted funds			-		-
Unrestricted funds			<u>137,074</u>		<u>152,174</u>
	8		<u>137,074</u>		<u>152,174</u>

The financial statements on pages 4 to 7.5 were approved by the trustees and signed on their behalf by:-

Janice Johnson
[Janice Johnson \(May 12, 2026 12:27:57 GMT+1\)](#)
 Janice Johnson – Trustee

May 12, 2026
 Date:

gfgreenhalgh
[GfGreenhalgh \(May 12, 2026 23:32:26 GMT+1\)](#)
 Ged Greenhalgh - Trustee

May 12, 2026
 Date:

THE RAFT FOUNDATION

CHARITABLE INCORPORATED ORGANISATION

NOTES TO THE FINANCIAL STATEMENTS

FOR THE YEAR ENDED 31 DECEMBER 2024

1. INCOME

The income is entirely attributable to the Charity's principal aims and objectives.

	Unrestricted	Restricted	Total 31/12/2024	Total 31/12/2023
	£	£	£	£
Voluntary donations	20,689	-	20,689	35,122
Grants	19,470	1,780	21,250	3,000
Government grants	19,010	-	19,010	48,633
	<u>59,169</u>	<u>1,780</u>	<u>60,949</u>	<u>86,755</u>

THE RAFT FOUNDATION

CHARITABLE INCORPORATED ORGANISATION

NOTES TO THE FINANCIAL STATEMENTS (CONTINUED)

FOR THE YEAR ENDED 31 DECEMBER 2024

2. EXPENDITURE

	Unrestricted	Restricted	Total 31/12/2024	Total 31/12/2023
	£	£	£	£
Direct costs:				
Food	36,255	-	36,255	41,757
Cooking equipment	716	-	716	-
Donatable clothing	76	-	76	2,939
Supermarket vouchers	5,525	-	5,525	11,100
Toys	-	1,370	1,370	-
Gardening supplies	-	266	266	-
Support costs:				
Staff costs	15,040	-	15,040	-
Rent	5,746	-	5,746	9,686
Repairs and renewals	1,442	-	1,442	414
Telephone	962	-	962	262
Motor and travel	900	-	900	981
Insurance	464	-	464	429
Printing, post and stationery	303	-	303	49
Computer expenses	-	-	-	369
Subscriptions	472	-	472	276
Cleaning	83	-	83	-
Sundry expenses	293	-	293	53
Governance costs:				
Accountancy	3,988	-	3,988	900
Finance costs:				
Bank charges	61	-	61	62
Depreciation:				
Improvements to property	1302	-	1302	290
Fixtures and fittings	51	-	51	-
Plant and machinery	503	-	503	311
Computer equipment	231	-	231	164
	74,413	1,636	76,049	70,042

THE RAFT FOUNDATION

CHARITABLE INCORPORATED ORGANISATION

NOTES TO THE FINANCIAL STATEMENTS (CONTINUED)

FOR THE YEAR ENDED 31 DECEMBER 2024

3. NET MOVEMENT IN FUNDS

	2024 £	2023 £
The net movement in funds is stated after charging/(crediting):		
Fees payable for the independent examination of the charity's financial statements	2,520	450
Other financial services	1,468	450
Depreciation of owned tangible fixed assets	<u>2,087</u>	<u>765</u>

4. EMPLOYEES

The average monthly number of employees during the year was:

	2024 Number	2023 Number
	<u>2</u>	<u>-</u>
	2024 £	2023 £
Wages and salaries	14,624	-
Employer pension costs	<u>416</u>	<u>-</u>
	<u>15,040</u>	<u>-</u>

There were no employees whose annual remuneration was more than £60,000.

5. TAXATION

The charity is exempt from taxation on its activities because all its income is applied for charitable purposes.

THE RAFT FOUNDATION

CHARITABLE INCORPORATED ORGANISATION

NOTES TO THE FINANCIAL STATEMENTS (CONTINUED)

FOR THE YEAR ENDED 31 DECEMBER 2024

6. FIXED ASSETS

	Improvements to Property £	Plant and Machinery £	Fixtures and fittings £	Computer Equipment £	Total £
COST OR VALUATION					
At 31 December 2023	5,499	1,617	-	656	7,772
Additions	-	2,587	375	530	3,492
Disposals	-	-	-	-	-
At 31 December 2024	<u>5,499</u>	<u>4,204</u>	<u>375</u>	<u>1,186</u>	<u>11,264</u>
DEPRECIATION					
At 31 December 2023	290	683	-	519	1,492
Charge for Year	1,302	503	51	231	2,087
Depreciation on disposals	-	-	-	-	-
At 31 December 2024	<u>1,592</u>	<u>1,186</u>	<u>51</u>	<u>750</u>	<u>3,580</u>
NET BOOK VALUE					
At 31 December 2024	<u>3,907</u>	<u>3,018</u>	<u>324</u>	<u>436</u>	<u>7,684</u>
NET BOOK VALUE					
At 31 December 2023	<u>5,209</u>	<u>934</u>	<u>-</u>	<u>137</u>	<u>6,280</u>

7. CREDITORS – AMOUNTS FALLING DUE WITHIN ONE YEAR

	As at 31/12/2024 £	As at 31/12/2023 £
Accruals	4,656	800
Other creditors	8	-
Other taxation and social security	<u>42</u>	<u>-</u>
	<u>4,706</u>	<u>800</u>

THE RAFT FOUNDATION

CHARITABLE INCORPORATED ORGANISATION

NOTES TO THE FINANCIAL STATEMENTS (CONTINUED)

FOR THE YEAR ENDED 31 DECEMBER 2024

8. ANALYSIS OF MOVEMENTS OF FUNDS IN THE PERIOD

	Unrestricted	Restricted	Total 31/12/2024	Total 31/12/2023
	£	£	£	£
INCOME	59,169	1,780	60,949	86,755
EXPENSES	74,413	1,636	76,049	70,042
	(15,244)	144	(15,100)	16,713
TRANSFER BETWEEN FUNDS	144	(144)	-	-
FUNDS AT START	152,174	-	152,174	135,461
CLOSING BALANCES	137,074	-	137,074	152,174

9. LEASING AGREEMENTS

	Non-cancellable operating leases	
	2024	2023
	£	£
Within one year	6,000	6,000
Between one and five years	12,000	18,000
	18,000	24,000

10. TRANSACTIONS WITH TRUSTEES

There have been no transactions with trustees during the period. None of the trustees received any remuneration or expenses for their services during the period.

11. RELATED PARTY TRANSACTIONS

There are no related party transactions in the year.

THE RAFT FOUNDATION**CHARITABLE INCORPORATED ORGANISATION****NOTES TO THE FINANCIAL STATEMENTS (CONTINUED)****FOR THE YEAR ENDED 31 DECEMBER 2024****12. CAPITAL COMMITMENTS**

The Charity had no capital commitments at the year end.

13. ULTIMATE CONTROLLING PARTY

The Charity is under the control of the Board of Trustees.

14. FRC ETHICAL STANDARD – PROVISIONS AVAILABLE FOR SMALL ENTITIES

In common with other charities of our size and nature, we use our Independent Examiner to assist with the preparation of financial accounts.

The Raft Foundation
195A Bury Road, Rawtenstall, Rossendale, BB4 6DJ
Registered Charity Number: 1191272

May 12, 2026
Date:

Pierce (Bolton) Limited
Chartered Accountants
Hazlemere
70 Chorley New Road
Bolton
BL1 4BY

Dear Sirs

The following representations are made on the basis of enquiries of management and staff with relevant knowledge and experience such as we consider necessary in connection with your independent examination of the charity's financial statements for the year ended 31 December 2024. These enquiries have included inspection of supporting documentation, where appropriate, and are sufficient to satisfy ourselves that we can make each of the following representations. All representations are made to the best of our knowledge and belief.

General

- 1 We acknowledge that the work performed by you is substantially less in scope than an audit performed in accordance with International Standards on Auditing (UK) and that you do not express an audit opinion.
- 2 We confirm that the charity was entitled to exemption under section 144 of the Charities Act 2011 the requirement to have its financial statements for the financial year ended 31 December 2024 audited.
- 3 We have fulfilled our responsibilities as trustees, as set out in the terms of your engagement letter dated 19 February 2021 under the Charities Act 2011, for preparing financial statements in accordance with applicable law and United Kingdom Accounting Standards (UK Generally Accepted Accounting Practice), for being satisfied that they give a true and fair view and for making accurate representations to you.
- 4 All the transactions undertaken by the charity have been properly reflected and recorded in the accounting records.
- 5 All the accounting records have been made available to you for the purpose of your independent examination. We have provided you with unrestricted access to all appropriate persons within the charity, and with all other records and related information requested, including minutes of all management and trustee meetings and correspondence with the Charity Commission.
- 6 The financial statements are free of material misstatements, including omissions.
- 7 The effects of uncorrected misstatements are immaterial both individually and in total.

Assets and liabilities

- 8 The charity has satisfactory title to all assets and there are no liens or encumbrances on the charity's assets, except for those that are disclosed in the notes to the financial statements.

- 9 All actual liabilities, contingent liabilities and guarantees given to third parties have been recorded or disclosed as appropriate.
- 10 We have no plans or intentions that may materially alter the carrying value and where relevant the fair value measurements or classification of assets and liabilities reflected in the financial statements.

Accounting estimates

- 11 The methods, data and significant assumptions used by us in making accounting estimates, and their related disclosures, are appropriate to achieve recognition, measurement and disclosure that is reasonable in the context of the applicable financial reporting framework.

Legal claims

- 12 We have disclosed to you all claims in connection with litigation that have been, or are expected to be, received and such matters, as appropriate, have been properly accounted for, and disclosed in, the financial statements.

Laws and regulations

- 13 We have disclosed to you all known instances of non-compliance or suspected non-compliance with laws and regulations whose effects should be considered when preparing the financial statements.

Related parties

- 14 Related party relationships and transactions have been appropriately accounted for and disclosed in the financial statements. We have disclosed to you all relevant information concerning such relationships and transactions and are not aware of any other matters which require disclosure in order to comply with legislative and accounting standards requirements.

Subsequent events

- 15 All events subsequent to the date of the financial statements which require adjustment or disclosure have been properly accounted for and disclosed.

Going concern

- 16 We believe that the charity's financial statements should be prepared on a going concern basis on the grounds that current and future sources of funding or support will be more than adequate for the charity's needs. We have considered a period of twelve months from the date of approval of the financial statements. We believe that no further disclosures relating to the charity's ability to continue as a going concern need to be made in the financial statements.

Grants and donations

- 17 All grants, donations and other income, the receipt of which is subject to specific terms or conditions, have been notified to you. There have been no breaches of terms or conditions in the application of such income.

Yours faithfully

Janice Johnson

Janice Johnson (May 12, 2026 12:27:57 GMT+1)

.....
Signed on behalf of the Board of Trustees










5T256-Accounts and LOR 31 Dec 2024-not for distribution_3289446_879CAE7785F0B0CD02396C5FE5CCDD2A

Final Audit Report

2026-05-13

Created:	2026-05-05
By:	Shirley Turner (shirley@donnellybentley.co.uk)
Status:	Signed
Transaction ID:	CBJCHBCAABAA4MK5kmuJCISNcVgp1eaiYZZRaDmm_rfQ

"5T256-Accounts and LOR 31 Dec 2024-not for distribution_3289446_879CAE7785F0B0CD02396C5FE5CCDD2A" History

-  Document created by Shirley Turner (shirley@donnellybentley.co.uk)
2026-05-05 - 10:39:46 AM GMT
-  Document emailed to janicebjohnson@hotmail.com for signature
2026-05-05 - 10:42:12 AM GMT
-  Email viewed by janicebjohnson@hotmail.com
2026-05-12 - 11:10:23 AM GMT
-  Signer janicebjohnson@hotmail.com entered name at signing as Janice Johnson
2026-05-12 - 11:27:55 AM GMT
-  Document e-signed by Janice Johnson (janicebjohnson@hotmail.com)
Signature Date: 2026-05-12 - 11:27:57 AM GMT - Time Source: server - Signature Appearance Selected: TYPE
-  Document emailed to treasurer@raftfoundation.org for signature
2026-05-12 - 11:28:00 AM GMT
-  Email viewed by treasurer@raftfoundation.org
2026-05-12 - 10:31:24 PM GMT
-  Signer treasurer@raftfoundation.org entered name at signing as GfGreenhalgh
2026-05-12 - 10:32:24 PM GMT
-  Document e-signed by GfGreenhalgh (treasurer@raftfoundation.org)
Signature Date: 2026-05-12 - 10:32:26 PM GMT - Time Source: server - Signature Appearance Selected: TYPE



Document emailed to Andrew Newton (a.newton@pierce.co.uk) for signature

2026-05-12 - 10:32:28 PM GMT



Email viewed by Andrew Newton (a.newton@pierce.co.uk)

2026-05-13 - 9:27:11 AM GMT



Document e-signed by Andrew Newton (a.newton@pierce.co.uk)

Signature Date: 2026-05-13 - 9:27:31 AM GMT - Time Source: server - Signature Appearance Selected: IMAGE



Agreement completed.

2026-05-13 - 9:27:31 AM GMT



Adobe Acrobat Sign

THE RAFT FOUNDATION

CHARITABLE INCORPORATED ORGANISATION

Registered Charity Number: 1191272

ANNUAL REPORT AND FINANCIAL STATEMENTS
FOR THE YEAR ENDED 31 DECEMBER 2024

THE RAFT FOUNDATION
CHARITABLE INCORPORATED ORGANISATION
REPORT AND FINANCIAL STATEMENTS
FOR THE YEAR ENDED 31 DECEMBER 2024

CONTENTS	PAGE
Charity Information	1
Trustees' Report	2
Independent Examiners' Report	3
Accounting Policies	4
Statement of Financial Activities	5
Balance Sheet	6
Notes to the Financial Statements	7

THE RAFT FOUNDATION**CHARITABLE INCORPORATED ORGANISATION****CHARITY INFORMATION****FOR THE YEAR ENDED 31 DECEMBER 2024*****TRUSTEES:***

Janice Johnson (Chair)
Mark Stapleton (Vice chair)
Stephen Hall (Secretary) (Appointed 13/06/2024)
Ged Greenhalgh (Treasurer)
Gillian Heaton (Appointed 13/06/2024)
David Heaton (Appointed 13/06/2024)
Nicholas Subasic (Appointed 13/06/2024)

REGISTERED CHARITY NUMBER:

1191272

PRINCIPAL SERVICE ADDRESS:

195A Bury Road
Rawtenstall
Rossendale
BB4 6DJ

BANKERS:

Nat West Bank
28 Bank Street
Rawtenstall
BB4 8TS

ACCOUNTANTS:

Pierce (Bolton) Limited
Hazlemere
70 Chorley New Road
Bolton
BL1 4BY

INDEPENDENT EXAMINER:

Mr A Newton ACA
Pierce (Bolton) Limited
Chartered Accountants
Hazlemere
70 Chorley New Road
Bolton
BL1 4BY

THE RAFT FOUNDATION

CHARITABLE INCORPORATED ORGANISATION

REPORT OF THE TRUSTEES

FOR THE YEAR ENDED 31 DECEMBER 2024

STRUCTURE, GOVERNANCE AND MANAGEMENT

The Raft Foundation formally became a charity and was registered as a charitable incorporated organisation in the North West of England on 14 September 2020 and is governed by its constitution. The Charity registered number is 1191272. The Charity is non-profit making and its trustees are volunteers.

The trustees are appointed by the members of the organisation at the Annual General Meeting. Trustees have the power under the governing documents to co-opt individuals who support the objects of the organisation to fill vacancies on the Board of Trustees.

As part of their induction, any new trustees are provided with information about the charity, the management structure, its history and working practices. In addition, they are also provided with information from the Charity Commission regarding the duties and responsibilities of trustees.

OBJECTIVES AND ACTIVITIES

The Raft Foundation was established to help provide relief of financial hardship amongst people in Rossendale and the surrounding areas by providing emergency food, essential toiletries, household items and other items gifted to the organisation for the benefit of individuals and families in need. Also the provision of such other means, including (but not limited to) the provision of support or signposting to relevant information and other advisory services are offered by the charity.

PUBLIC BENEFIT

We have referred to the guidance in the Charity Commission's general guidance on public benefit when reviewing our aims and objectives and in planning our future activities. In particular the trustees have considered the activities of the Charity as set out in the 'Objectives and Activities' section above, and the 'Achievements and Performance in the Year' and assessed their future plans. They are satisfied that the criteria for public benefit are comprehensively achieved.

VOLUNTEERS

The RAFT Foundation is run by two part time employees and 32 volunteers, achievements listed in the Achievements and the section below are through volunteers giving their time, skills, and resources (such as use of their vehicles). The RAFT Foundation volunteers & staff all hail from the local community and believe in supporting their neighbours during times of hardship and difficulty. Along with kind donations of food from the public, their hard work, dedication, and caring natures are what help add a sprinkle of hope to the crisis food parcels they deliver. Without our fantastic volunteers there would be no RAFT Foundation, and we are grateful for their kindness, generosity, and support in delivering this charitable service

THE RAFT FOUNDATION

CHARITABLE INCORPORATED ORGANISATION

REPORT OF THE TRUSTEES (CONTINUED)

FOR THE YEAR ENDED 31 DECEMBER 2024

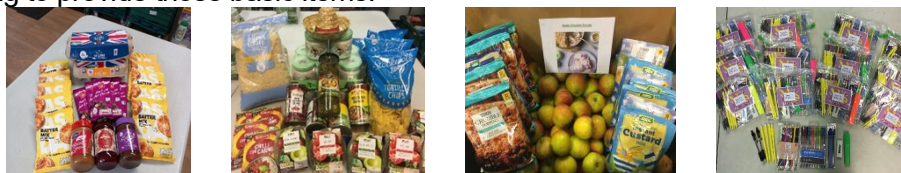
ACHIEVEMENTS AND PERFORMANCE IN THE YEAR

The Raft Foundation, through its volunteers:-

- During 2024 we delivered to
 - 3,248 people in 1,217 households and a total of 64,601 meals.
 - 144 lots of nappies and pull ups.
 - Supplies for 1,111 pets.
- Continued our active relationships with a wide range of local community, health and well-being groups and other community organisations in the Rossendale Connected Partnership, working for the good of Rossendale folk. Larger local statutory partners included Rossendale Borough Council Communities Team, GPs and Practice Managers, mental health workers, social prescribers, probation services, addiction support organisations, Citizens Advice and Rossendale Leisure Trust. Also included were more regional statutory partners based within Lancashire County Council



- Shared resources with the valley-wide Rossendale Food Box Scheme, Positive Start Food Group, and community food share groups at Haslingden Community Link, to aid access to food provision and support neighbours with different levels of need
- Produced our third Charity Commission required Annual Report for January 2023 to December 2023.
- Maintained our 5-star food hygiene rating.
- Continued working with IFAN to raise awareness of food poverty, and by providing ongoing data, supporting their campaigns and calls to the government to address this issue.
- Worked with Rossendale Borough Council (RBC) to deliver food parcels to those in financial crises as well as general hardship due to cost-of-living increases
- Delivered vouchers, Comfort Schemes, supporting neighbours receiving parcels during more challenging and expensive times e.g. at Christmas, Easter, and school holidays.
- Worked with a local vegetable supplier who we use on a weekly basis to provide fresh fruit and vegetables in our food parcels and also arranged a Christmas hamper scheme which contained everything required for a Christmas breakfast and dinner on Christmas day.
- Produced specific packs either to use surpluses such as large quantities of donated baking chocolate and surplus pasta, purchased from specific grants we received for seasonal events such as warming soup packs, blankets, hot water bottles and flasks, slow cookers, and ingredients which then were included to provide a main meal and dessert ingredients with recipes and instructions to cook them, created by staff and volunteers, Back to school packs for families struggling to provide those basic items.



THE RAFT FOUNDATION

CHARITABLE INCORPORATED ORGANISATION

REPORT OF THE TRUSTEES (CONTINUED)

FOR THE YEAR ENDED 31 DECEMBER 2024

- During an unprecedented increase in demand due to fuel and food price increases, our Christmas focus was on helping as many individuals and families as possible across Rossendale with food and warmth, providing hot water bottles, Blankets, Slow cookers, advent calendars and Christmas treats.
- Received £1000 from The Rossendale Rotary to specifically purchase toys, value of up to £30.00 per toy to be allocated to families with children who would be financially struggling to release some of the burden on families over the December month to provide a little something for children to have to open on Christmas day. After securing the purchase of the toys (bought mainly from B & M on the 2 for £20 and Argos 3 for £30.00) some of The Rossendale Rotary club came and assisted on the delivery of toys to struggling families.



- Supported the Christmas Rossendale Shine on Project, and CAP both based at Kay Street Baptist Church, who delivered three course meals plus gifts. Raft provided donations of advent calendars and selection boxes for inclusion in their gift bags
- We continued to support the Rossendale Shine On project helping individuals experiencing isolation and loneliness, by promoting befriending and emotional well-being and sharing our supermarket surplus collections on a weekly basis throughout the rest of the year.
- Made regular weekly donations of surplus fresh food to SafeSpace, the Rossendale Food Boxes scheme, Positive Action in the Community (PAC), Young Homeless Service, and Shine On, The Unity Fridge, Bacup Trinity Baptist and Haslingden Community Link.
- Delivered masses of donated fresh flowers, potted plants, and spring bulbs with our parcels as well as to Nursing and Care Homes and local community groups across Rossendale to brighten staff and residents' days, and we shared with other community projects too such as Rossendale Food Box Scheme, Haslingden Community Link, SafeSpace, Irwell Vale Community Group, Friends of Haslingden Cemetery and Civic Pride to name a few.



- Continued to provide seasonal treats such as Easter eggs, Mother's Day Gifts (including gifts for single Fathers), Father's Day Gifts, Birthday gifts
- Provided activity packs and books for kids during school holidays
- Provided back to school stationery packs for those children and adults returning to school, college and university
- Provided slow cookers, microwaves, kettles, toasters, and cook-books to people with reduced means of preparing food economically.

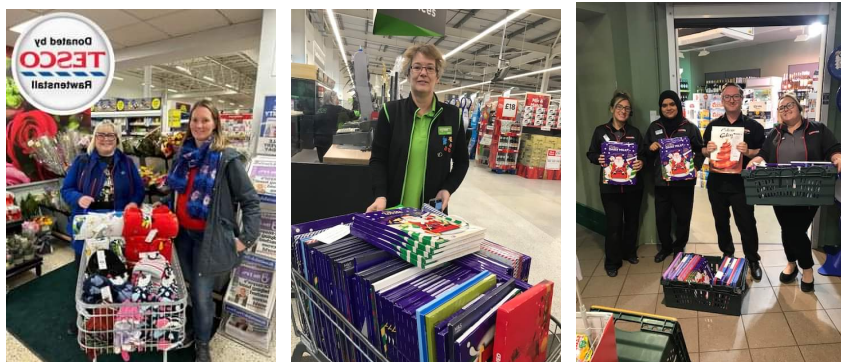
THE RAFT FOUNDATION

CHARITABLE INCORPORATED ORGANISATION

REPORT OF THE TRUSTEES (CONTINUED)

FOR THE YEAR ENDED 31 DECEMBER 2024

- Provided blankets, socks, scarves, and hot water bottles to help people stay warm despite increasing fuel costs, following the principal of 'heat the person, not the room'
- Provided new baby welcome packs to Knitting Smiles for East Lancashire who run this project and put the boxes together
- Using our social media visibility to promote other local organisations' activities and appeals, and share information on support available
- Promoted Challenge Poverty Week England 2024.
- Expanded public donation points
- Contributed to reduced food waste by working with Neighbourly to redistribute excess food.
- Worked with the Community Champions at our local ASDA, TESCO and Co-Op stores and held in-store stalls to raise awareness of our charity and food poverty, promote support and donations.



- Completed our work with RBC on Worrying About Money leaflet and launched this in conjunction with IFAN (Independent Food Aid Network).

RESERVES POLICY

It is the policy of the Charity to maintain unrestricted funds, which are free reserves of the Charity, at a level which as a minimum equates to approximately twelve months operating expenditure. A reserve in the order of £50,000 is considered sufficient since the Charity has little in the way of overheads and this would allow the Charity to react to changes in funding in a constructive manner.

FINANCIAL REVIEW

	£
The deficit for the period was	(15,100)
To which is added the surplus brought forward	<u>152,174</u>
Leaving a surplus carried forward of	<u><u>137,074</u></u>

THE RAFT FOUNDATION

CHARITABLE INCORPORATED ORGANISATION

REPORT OF THE TRUSTEES (CONTINUED)

FOR THE YEAR ENDED 31 DECEMBER 2024

TRUSTEES

The Trustees who served during the year are listed below:

Janice Johnson	
Ged Greenhalgh	
Mark Stapleton	
Helen Jeeves	(resigned 10 April 2024)
Michelle Jones	(resigned 10 April 2024)
Gillian Heaton	
David Heaton	
Nicholas Subasic	
Stephen Hall	

TAXATION

The Trustees are of the opinion that as a charity the organisation will be exempt from taxation and will be granted exemption by the Inland Revenue under the provisions of section 505 of the Income and Corporation Taxes Act 1988.

STATEMENT OF TRUSTEES' RESPONSIBILITIES

The trustees are responsible for preparing the Trustees' Report and the financial statements in accordance with applicable law and United Kingdom Accounting Standards (United Kingdom Generally Accepted Accounting Practice).

The law applicable to charities in England & Wales requires the trustees to prepare financial statements for each financial year, which give a true and fair view of the state of affairs of the charity and of the incoming resources and application of resources of the charity for that period. In preparing these financial statements the trustees are required to:

- Select suitable accounting policies and then apply them consistently;
- Observe the methods and principles in the Charities SORP;
- Make judgements and estimates that are reasonable and prudent;
- State whether applicable accounting standards have been followed, subject to any material departures disclosed and explained in the financial statements;
- Prepare the financial statements on the going concern basis unless it is inappropriate to presume that the charity will continue in operation.

The trustees are responsible for keeping adequate accounting records that disclose with reasonable accuracy at any time the financial position of the charity and enable them to ensure that the financial statements comply with the Charities Act 2011, the Charity (Accounts Reports) Regulations 2008 and trust deed. They are also responsible for safeguarding the assets of the charity and hence for taking reasonable steps for the prevention and detection of fraud and other irregularities.

THE RAFT FOUNDATION**CHARITABLE INCORPORATED ORGANISATION****REPORT OF THE TRUSTEES (CONTINUED)****FOR THE YEAR ENDED 31 DECEMBER 2024****INDEPENDENT EXAMINER**

A resolution will be proposed at the Annual General Meeting to appoint Mr Andrew Newton of Pierce (Bolton) Limited, Chartered Accountants and Registered Auditor, as the Independent Examiner to the Charity.

APPROVED BY THE TRUSTEES AND SIGNED ON BEHALF OF THE TRUSTEES BY:

Janice Johnson

Janice Johnson (May 12, 2026 12:27:57 GMT+1)

.....
Janice Johnson - Trustee

May 12, 2026

Date:

THE RAFT FOUNDATION

CHARITABLE INCORPORATED ORGANISATION

INDEPENDENT EXAMINER'S REPORT TO THE TRUSTEES OF THE RAFT FOUNDATION

FOR THE YEAR ENDED 31 DECEMBER 2024

I report to the charity trustees on my examination of the accounts of the charity for the year ended 31 December 2024 which are set out on pages 4 to 7.4.

Responsibilities and basis of report

As the charity's trustees you are responsible for the preparation of the accounts in accordance with the requirements of the Charities Act 2011 ('the Act').

I report in respect of my examination of the charity's accounts carried out under section 145 of the Act and in carrying out my examination I have followed all the applicable Directions given by the Charity Commission under section 145(5)(b) of the Act.

Independent examiner's statement

I have completed my examination. I confirm that no material matters have come to my attention in connection with the examination giving me cause to believe that in any material respect:

- 1) accounting records were not kept in respect of the charity as required by section 130 of the Act; or
- 2) the accounts do not accord with those records; or
- 3) the accounts do not comply with the applicable requirements concerning the form and content of accounts set out in the Charities (Accounts and Reports) Regulations 2008 other than any requirement that the accounts give a 'true and fair view' which is not a matter considered as part of an independent examination.

I have no concerns and have come across no other matters in connection with the examination to which attention should be drawn in this report in order to enable a proper understanding of the accounts to be reached.

Andrew Newton

Mr A Newton ACA
Pierce (Bolton) Limited
Chartered Accountants
Hazlemere
70 Chorley New Road
Bolton, BL1 4BY

May 13, 2026
Date:

THE RAFT FOUNDATION

CHARITABLE INCORPORATED ORGANISATION

ACCOUNTING POLICIES

FOR THE YEAR ENDED 31 DECEMBER 2024

The Raft Foundation is a charitable incorporated organisation.

The principal policies adopted in the Financial Statements are set out below.

BASIS OF ACCOUNTING

The financial statements have been prepared in accordance with Accounting and Reporting by Charities: Statement of Recommended Practice applicable to charities preparing their accounts in accordance with the Financial Reporting Standard applicable in the UK and Republic of Ireland (FRS 102) (effective 1 January 2020) – (Charities SORP (FRS 102)), the Financial Reporting Standard applicable in the UK and Republic of Ireland (FRS 102) and the Charities Act 2011.

The charity constitutes a public benefit entity as defined by FRS 102.

The financial statements are prepared in sterling, which is the functional currency of the charity.

FUND ACCOUNTING

Unrestricted funds represent the accumulated funds of the charity that are not subject to any restrictions regarding their use, and are available in the furtherance of the general objectives of the charity.

Designated funds are designated by the Trustees for particular purposes, and are also unrestricted, as these monies can be re-assigned by the Trustees if so required.

INCOME

All income is included in the statement of financial activities when the Charity is entitled to the income and the amount can be quantified with reasonable accuracy.

Income includes grants in respect of revenue and capital items. The charity receives donations of food and other household goods for distribution to beneficiaries. No value has been included in the accounts for these as the cost and practicality involved in undertaking a valuation is not considered to be justified by the benefit to the users of the accounts.

EXPENDITURE

Expenditure is recognised on an accrual basis as a liability is incurred.

- Charitable expenditure comprises those costs incurred by the Charity in the delivery of its activities and services for its beneficiaries. It includes both costs that can be allocated directly to such activities and those costs of an indirect nature necessary to support them.
- All costs are allocated between the expenditure categories on a basis designed to reflect the use of the resource. Costs relating to a particular activity are allocated directly, others are apportioned on an appropriate basis.

Grants payable are charged in the year when the offer is made except in those cases where the offer is conditional, such grants being recognised as expenditure when the conditions attaching are fulfilled. Grants offered subject to conditions which have not been met at the end of the year are noted as a commitment, but not accrued as expenditure.

TAXATION

No provision has been made for taxation as exemption from taxation is being granted by the Inland Revenue under the provisions of Section 505 of the Income and Corporation Taxes Act 1988.

THE RAFT FOUNDATION

CHARITABLE INCORPORATED ORGANISATION

ACCOUNTING POLICIES (CONTINUED)

FOR THE YEAR ENDED 31 DECEMBER 2024

VAT ACCOUNTING

The Charity is not liable to be registered for VAT. Irrecoverable VAT on expenditure is not analysed separately but attributed to the category of expenditure on which it is incurred.

TANGIBLE FIXED ASSETS

Fixed assets are stated at cost less accumulated depreciation.

Depreciation is provided on all tangible fixed assets at rates as follows:

Improvements to property	10% per annum	straight line method
Plant and machinery	25% per annum	reducing balance method
Computer equipment	25% per annum	straight line method

CASH AT BANK AND IN HAND

Cash at bank and in hand includes cash and short term highly liquid investments with a short maturity of three months or less from the date of acquisition or opening of the deposit or similar account.

CREDITORS AND PROVISIONS

Creditors and provisions are recognised where the charity has a present obligation resulting from a past event that will probably result in the transfer of funds to a third party and the amount due to settle the obligation can be measured or estimated reliably. Creditors and provisions are normally recognised at their settlement amount after allowing for any discounts due.

CASH FLOW STATEMENT

The Board of Trustees have elected to take advantage of the exemption under Update Bulletin 1 of the Charities SORP (FRS 102) not to prepare a cash flow statement.

GOING CONCERN

The trustees have reviewed the circumstances of The Raft Foundation and consider that adequate resources continue to be available to fund the activities of the charity for the foreseeable future. The trustees are of the view that the charity is a going concern.

GRANTS

Income from the government and other grants are recognised at fair value when the charity has entitlement after any performance conditions have been met, it is probable that the income will be received and the amount can be measured reliably. If entitlement is not met then these amounts are deferred.

JUDGEMENTS AND KEY SOURCES OF ESTIMATION UNCERTAINTY

The preparation of these financial statements require certain judgements, estimates and assumptions that affect the reported amounts of assets, liabilities, income and expenses. Estimates and judgements are continually evaluated and are based on historical experience and other factors, including expectations of future events that are believed to be reasonable under the circumstances.

THE RAFT FOUNDATION

CHARITABLE INCORPORATED ORGANISATION

STATEMENT OF FINANCIAL ACTIVITIES (INCLUDING INCOME AND EXPENDITURE ACCOUNT)

FOR THE YEAR ENDED 31 DECEMBER 2024

	Unrestricted Fund £	Restricted Fund £	Total Period End 31/12/2024 £	Unrestricted Fund 31/12/2023 £
Income:				
Voluntary donations	20,689	-	20,689	35,122
Grants	38,480	1,780	40,260	51,633
Total Income	59,169	1,780	60,949	86,755
Expenditure:				
Expenditure on charitable activities	74,413	1,636	76,049	70,042
Total Expenditure	74,413	1,636	76,049	70,042
Net income/(expenditure) for the period	(15,244)	144	(15,100)	16,713
Transfers	144	(144)	-	-
Balance brought forward 01/01/2024	152,174	-	152,174	135,461
Balance carried forward 31/12/2024	137,074	-	137,074	152,174

THE RAFT FOUNDATION

CHARITABLE INCORPORATED ORGANISATION

BALANCE SHEET

AS AT 31 DECEMBER 2024

	Note	As At 31/12/2024		As at 31/12/2023	
		£	£	£	£
FIXED ASSETS					
Tangible fixed assets	6		7,684		6,280
CURRENT ASSETS					
Cash at bank and in hand		134,096		146,694	
CREDITORS: AMOUNTS FALLING DUE WITHIN ONE YEAR	7				
		<u>(4,706)</u>		<u>(800)</u>	
NET CURRENT ASSETS			<u>129,390</u>		<u>145,894</u>
TOTAL ASSETS LESS CURRENT LIABILITIES			<u>137,074</u>		<u>152,174</u>
Represented By:					
FUNDS					
Restricted funds			-		-
Unrestricted funds			<u>137,074</u>		<u>152,174</u>
	8		<u>137,074</u>		<u>152,174</u>

The financial statements on pages 4 to 7.5 were approved by the trustees and signed on their behalf by:-

Janice Johnson
[Janice Johnson \(May 12, 2026 12:27:57 GMT+1\)](#)
 Janice Johnson – Trustee

May 12, 2026
 Date:

gfgreenhalgh
[GfGreenhalgh \(May 12, 2026 23:32:26 GMT+1\)](#)
 Ged Greenhalgh - Trustee

May 12, 2026
 Date:

THE RAFT FOUNDATION

CHARITABLE INCORPORATED ORGANISATION

NOTES TO THE FINANCIAL STATEMENTS

FOR THE YEAR ENDED 31 DECEMBER 2024

1. INCOME

The income is entirely attributable to the Charity's principal aims and objectives.

	Unrestricted	Restricted	Total 31/12/2024	Total 31/12/2023
	£	£	£	£
Voluntary donations	20,689	-	20,689	35,122
Grants	19,470	1,780	21,250	3,000
Government grants	19,010	-	19,010	48,633
	<u>59,169</u>	<u>1,780</u>	<u>60,949</u>	<u>86,755</u>

THE RAFT FOUNDATION

CHARITABLE INCORPORATED ORGANISATION

NOTES TO THE FINANCIAL STATEMENTS (CONTINUED)

FOR THE YEAR ENDED 31 DECEMBER 2024

2. EXPENDITURE

	Unrestricted	Restricted	Total 31/12/2024	Total 31/12/2023
	£	£	£	£
Direct costs:				
Food	36,255	-	36,255	41,757
Cooking equipment	716	-	716	-
Donatable clothing	76	-	76	2,939
Supermarket vouchers	5,525	-	5,525	11,100
Toys	-	1,370	1,370	-
Gardening supplies	-	266	266	-
Support costs:				
Staff costs	15,040	-	15,040	-
Rent	5,746	-	5,746	9,686
Repairs and renewals	1,442	-	1,442	414
Telephone	962	-	962	262
Motor and travel	900	-	900	981
Insurance	464	-	464	429
Printing, post and stationery	303	-	303	49
Computer expenses	-	-	-	369
Subscriptions	472	-	472	276
Cleaning	83	-	83	-
Sundry expenses	293	-	293	53
Governance costs:				
Accountancy	3,988	-	3,988	900
Finance costs:				
Bank charges	61	-	61	62
Depreciation:				
Improvements to property	1302	-	1302	290
Fixtures and fittings	51	-	51	-
Plant and machinery	503	-	503	311
Computer equipment	231	-	231	164
	74,413	1,636	76,049	70,042

THE RAFT FOUNDATION

CHARITABLE INCORPORATED ORGANISATION

NOTES TO THE FINANCIAL STATEMENTS (CONTINUED)

FOR THE YEAR ENDED 31 DECEMBER 2024

3. NET MOVEMENT IN FUNDS

	2024 £	2023 £
The net movement in funds is stated after charging/(crediting):		
Fees payable for the independent examination of the charity's financial statements	2,520	450
Other financial services	1,468	450
Depreciation of owned tangible fixed assets	<u>2,087</u>	<u>765</u>

4. EMPLOYEES

The average monthly number of employees during the year was:

	2024 Number	2023 Number
	<u>2</u>	<u>-</u>
	2024 £	2023 £
Wages and salaries	14,624	-
Employer pension costs	<u>416</u>	<u>-</u>
	<u>15,040</u>	<u>-</u>

There were no employees whose annual remuneration was more than £60,000.

5. TAXATION

The charity is exempt from taxation on its activities because all its income is applied for charitable purposes.

THE RAFT FOUNDATION

CHARITABLE INCORPORATED ORGANISATION

NOTES TO THE FINANCIAL STATEMENTS (CONTINUED)

FOR THE YEAR ENDED 31 DECEMBER 2024

6. FIXED ASSETS

	Improvements to Property £	Plant and Machinery £	Fixtures and fittings £	Computer Equipment £	Total £
COST OR VALUATION					
At 31 December 2023	5,499	1,617	-	656	7,772
Additions	-	2,587	375	530	3,492
Disposals	-	-	-	-	-
At 31 December 2024	<u>5,499</u>	<u>4,204</u>	<u>375</u>	<u>1,186</u>	<u>11,264</u>
DEPRECIATION					
At 31 December 2023	290	683	-	519	1,492
Charge for Year	1,302	503	51	231	2,087
Depreciation on disposals	-	-	-	-	-
At 31 December 2024	<u>1,592</u>	<u>1,186</u>	<u>51</u>	<u>750</u>	<u>3,580</u>
NET BOOK VALUE					
At 31 December 2024	<u>3,907</u>	<u>3,018</u>	<u>324</u>	<u>436</u>	<u>7,684</u>
NET BOOK VALUE					
At 31 December 2023	<u>5,209</u>	<u>934</u>	<u>-</u>	<u>137</u>	<u>6,280</u>

7. CREDITORS – AMOUNTS FALLING DUE WITHIN ONE YEAR

	As at 31/12/2024 £	As at 31/12/2023 £
Accruals	4,656	800
Other creditors	8	-
Other taxation and social security	<u>42</u>	<u>-</u>
	<u>4,706</u>	<u>800</u>

THE RAFT FOUNDATION

CHARITABLE INCORPORATED ORGANISATION

NOTES TO THE FINANCIAL STATEMENTS (CONTINUED)

FOR THE YEAR ENDED 31 DECEMBER 2024

8. ANALYSIS OF MOVEMENTS OF FUNDS IN THE PERIOD

	Unrestricted	Restricted	Total 31/12/2024	Total 31/12/2023
	£	£	£	£
INCOME	59,169	1,780	60,949	86,755
EXPENSES	74,413	1,636	76,049	70,042
	(15,244)	144	(15,100)	16,713
TRANSFER BETWEEN FUNDS	144	(144)	-	-
FUNDS AT START	152,174	-	152,174	135,461
CLOSING BALANCES	137,074	-	137,074	152,174

9. LEASING AGREEMENTS

	Non-cancellable operating leases	
	2024	2023
	£	£
Within one year	6,000	6,000
Between one and five years	12,000	18,000
	18,000	24,000

10. TRANSACTIONS WITH TRUSTEES

There have been no transactions with trustees during the period. None of the trustees received any remuneration or expenses for their services during the period.

11. RELATED PARTY TRANSACTIONS

There are no related party transactions in the year.

THE RAFT FOUNDATION**CHARITABLE INCORPORATED ORGANISATION****NOTES TO THE FINANCIAL STATEMENTS (CONTINUED)****FOR THE YEAR ENDED 31 DECEMBER 2024****12. CAPITAL COMMITMENTS**

The Charity had no capital commitments at the year end.

13. ULTIMATE CONTROLLING PARTY

The Charity is under the control of the Board of Trustees.

14. FRC ETHICAL STANDARD – PROVISIONS AVAILABLE FOR SMALL ENTITIES

In common with other charities of our size and nature, we use our Independent Examiner to assist with the preparation of financial accounts.

The Raft Foundation
195A Bury Road, Rawtenstall, Rossendale, BB4 6DJ
Registered Charity Number: 1191272

May 12, 2026
Date:

Pierce (Bolton) Limited
Chartered Accountants
Hazlemere
70 Chorley New Road
Bolton
BL1 4BY

Dear Sirs

The following representations are made on the basis of enquiries of management and staff with relevant knowledge and experience such as we consider necessary in connection with your independent examination of the charity's financial statements for the year ended 31 December 2024. These enquiries have included inspection of supporting documentation, where appropriate, and are sufficient to satisfy ourselves that we can make each of the following representations. All representations are made to the best of our knowledge and belief.

General

- 1 We acknowledge that the work performed by you is substantially less in scope than an audit performed in accordance with International Standards on Auditing (UK) and that you do not express an audit opinion.
- 2 We confirm that the charity was entitled to exemption under section 144 of the Charities Act 2011 the requirement to have its financial statements for the financial year ended 31 December 2024 audited.
- 3 We have fulfilled our responsibilities as trustees, as set out in the terms of your engagement letter dated 19 February 2021 under the Charities Act 2011, for preparing financial statements in accordance with applicable law and United Kingdom Accounting Standards (UK Generally Accepted Accounting Practice), for being satisfied that they give a true and fair view and for making accurate representations to you.
- 4 All the transactions undertaken by the charity have been properly reflected and recorded in the accounting records.
- 5 All the accounting records have been made available to you for the purpose of your independent examination. We have provided you with unrestricted access to all appropriate persons within the charity, and with all other records and related information requested, including minutes of all management and trustee meetings and correspondence with the Charity Commission.
- 6 The financial statements are free of material misstatements, including omissions.
- 7 The effects of uncorrected misstatements are immaterial both individually and in total.

Assets and liabilities

- 8 The charity has satisfactory title to all assets and there are no liens or encumbrances on the charity's assets, except for those that are disclosed in the notes to the financial statements.

- 9 All actual liabilities, contingent liabilities and guarantees given to third parties have been recorded or disclosed as appropriate.
- 10 We have no plans or intentions that may materially alter the carrying value and where relevant the fair value measurements or classification of assets and liabilities reflected in the financial statements.

Accounting estimates

- 11 The methods, data and significant assumptions used by us in making accounting estimates, and their related disclosures, are appropriate to achieve recognition, measurement and disclosure that is reasonable in the context of the applicable financial reporting framework.

Legal claims

- 12 We have disclosed to you all claims in connection with litigation that have been, or are expected to be, received and such matters, as appropriate, have been properly accounted for, and disclosed in, the financial statements.

Laws and regulations

- 13 We have disclosed to you all known instances of non-compliance or suspected non-compliance with laws and regulations whose effects should be considered when preparing the financial statements.

Related parties

- 14 Related party relationships and transactions have been appropriately accounted for and disclosed in the financial statements. We have disclosed to you all relevant information concerning such relationships and transactions and are not aware of any other matters which require disclosure in order to comply with legislative and accounting standards requirements.

Subsequent events

- 15 All events subsequent to the date of the financial statements which require adjustment or disclosure have been properly accounted for and disclosed.

Going concern

- 16 We believe that the charity's financial statements should be prepared on a going concern basis on the grounds that current and future sources of funding or support will be more than adequate for the charity's needs. We have considered a period of twelve months from the date of approval of the financial statements. We believe that no further disclosures relating to the charity's ability to continue as a going concern need to be made in the financial statements.

Grants and donations

- 17 All grants, donations and other income, the receipt of which is subject to specific terms or conditions, have been notified to you. There have been no breaches of terms or conditions in the application of such income.

Yours faithfully

Janice Johnson

Janice Johnson (May 12, 2026 12:27:57 GMT+1)

.....
Signed on behalf of the Board of Trustees










5T256-Accounts and LOR 31 Dec 2024-not for distribution_3289446_879CAE7785F0B0CD02396C5FE5CCDD2A

Final Audit Report

2026-05-13

Created:	2026-05-05
By:	Shirley Turner (shirley@donnellybentley.co.uk)
Status:	Signed
Transaction ID:	CBJCHBCAABAA4MK5kmuJCISNcVgp1eaiYZZRaDmm_rfQ

"5T256-Accounts and LOR 31 Dec 2024-not for distribution_3289446_879CAE7785F0B0CD02396C5FE5CCDD2A" History

-  Document created by Shirley Turner (shirley@donnellybentley.co.uk)
2026-05-05 - 10:39:46 AM GMT
-  Document emailed to janicebjohnson@hotmail.com for signature
2026-05-05 - 10:42:12 AM GMT
-  Email viewed by janicebjohnson@hotmail.com
2026-05-12 - 11:10:23 AM GMT
-  Signer janicebjohnson@hotmail.com entered name at signing as Janice Johnson
2026-05-12 - 11:27:55 AM GMT
-  Document e-signed by Janice Johnson (janicebjohnson@hotmail.com)
Signature Date: 2026-05-12 - 11:27:57 AM GMT - Time Source: server - Signature Appearance Selected: TYPE
-  Document emailed to treasurer@raftfoundation.org for signature
2026-05-12 - 11:28:00 AM GMT
-  Email viewed by treasurer@raftfoundation.org
2026-05-12 - 10:31:24 PM GMT
-  Signer treasurer@raftfoundation.org entered name at signing as GfGreenhalgh
2026-05-12 - 10:32:24 PM GMT
-  Document e-signed by GfGreenhalgh (treasurer@raftfoundation.org)
Signature Date: 2026-05-12 - 10:32:26 PM GMT - Time Source: server - Signature Appearance Selected: TYPE



Document emailed to Andrew Newton (a.newton@pierce.co.uk) for signature

2026-05-12 - 10:32:28 PM GMT



Email viewed by Andrew Newton (a.newton@pierce.co.uk)

2026-05-13 - 9:27:11 AM GMT



Document e-signed by Andrew Newton (a.newton@pierce.co.uk)

Signature Date: 2026-05-13 - 9:27:31 AM GMT - Time Source: server - Signature Appearance Selected: IMAGE



Agreement completed.

2026-05-13 - 9:27:31 AM GMT



Adobe Acrobat Sign