

The RAFT Foundation
Annual Report 1st January - 31st December 2022
Registered Charity Number 1191272





Annual Report 01-1-22 to 31-12-22

Charity name: The RAFT Foundation (TRF)

Charity registration number: 1191272

1. Summary of the purposes of the charity as set out in its governing document

1.1 THE RELIEF OF FINANCIAL HARDSHIP AMONGST PEOPLE IN ROSSENDALE AND THE SURROUNDING AREA BY:

A) PROVIDING EMERGENCY FOOD, ESSENTIAL TOILETRIES, AND HOUSEHOLD ITEMS TO INDIVIDUALS AND FAMILIES IN NEED

B) SUCH OTHER MEANS, INCLUDING (BUT NOT LIMITED TO) THE PROVISION OF SUPPORT OR SIGNPOSTING TO RELEVANT INFORMATION AND OTHER ADVISORY SERVICES

2. Summary of the main activities in relation to those purposes

2.1 The Raft Foundation is a crisis support foodbank and signposting service. We operate from our single distribution centre in Rawtenstall, Lancashire and provide support to individuals and families within the community of Rossendale.

2.2 We **deliver** our food parcels **3 days per week**, 51 weeks of the year, but wherever severe crisis and emergency need for support exists, our volunteers do their best to deliver outside of these 3 core days. Volunteers **support** us across the full **7-day** period with the other days of the week spent sourcing, buying, collecting, sorting, and packing donated food for distribution.



2.3 We also work closely with 35 local, regional, and national statutory, and third sector organisations that refer their clients to us for support. This referral system helps us to ensure the people we work with are actively engaged with professionals, who can assist them in recovery from their position of crisis. By offering a delivery service we also help ensure our food parcels can reach some of the most vulnerable members of our community who struggle to access food due to disability/mobility or mental health issues.



2.4 Each individual/family referred is directly contacted by RAFT the day before a delivery to ensure the request from the referral agency is appropriate and their details are correct. We ask the relevant questions to ensure we have sufficient information to meet the needs of everyone in the household, including pets. Parcels are adapted to support lifestyle choices such as vegetarianism and veganism, religious or cultural preferences such as Halal or Kosher, and they are also adapted to consider food allergies/intolerances, and in support of those without a permanent address who may be sofa surfing, or have no or limited access to refrigeration and cooking facilities.

2.5 Enough food for 3 meals per day, for 7 days is provided to each member of the household. We do not differentiate parcel content for families with children. Parcel food content remains the same, whether it is term time, school holidays or if the child/children are in receipt of free school meals and we also adapt parcels accordingly to consider the needs of parents, grandparents, and other care givers whose children, grandchildren or otherwise may only be visiting for a short period of time.

2.6 The food element is a combination of ambient and non-ambient food products, but we aim to provide as healthy and nutritionally balanced food parcel as possible. In addition to food, we also provide personal hygiene products, sanitary products, nappies, and household cleaning products. Furthermore, we add donated flowers and seasonal gifts for Mother's/Father's Day, Easter/Passover, Christmas, and Eid as well as birthday gifts, advent calendars, and new baby welcome packs etc.



2.7 We also make great use of redistributed food, toiletries, flowers etc. that would otherwise go to waste via our ongoing relationships with M&S, ALDI and LIDL via Neighbourly, Warburtons, L'Oreal, other local supermarkets, and stores.

2.8 Our volunteers continue to provide our service to our community post- COVID-19 Pandemic. We have continually adapted and refreshed our handling, processing, delivery and hygiene policies and protocols to reflect current government advice and guidance in relation to COVID-19 whilst continuing to ensure the personal safety of each of our volunteers and the safe handling of food.

3. Statement on public benefit

3.1 All TRF trustees are aware of the need to ensure that activities are focused on ensuring that we provide a public benefit to the people of Rossendale.

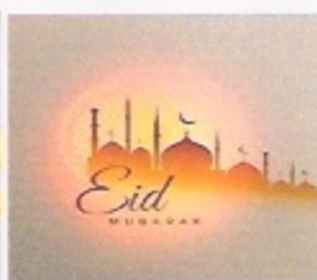
4. Volunteer Contributions

4.1 TRF is run entirely by volunteers, so all the achievements listed in the Achievements and Performance section below are through volunteers giving their time, skills, and resources (such as use of their vehicles). The RAFT Foundation volunteers all hail from the local community and believe in supporting their neighbours during times of hardship and difficulty. Along with kind donations of food from the public, their hard work, dedication, and caring natures are what help add a sprinkle of hope to the crisis food parcels they deliver. Without our fantastic volunteers there would be no RAFT Foundation and we are grateful for their kindness, generosity, and support in delivering this charitable service



4.2 Trustee board members want to thank everyone for all their many contributions, always going above and beyond. There are so many tasks that keep RAFT able to respond to our neighbours experiencing hard times. There are so many parts to the jigsaw, some very visible and some hidden away behind the scenes and we want to recognise the many volunteer roles and tasks that are carried out by all:

- Collection of donations and supplies at all hours of the day, on weekends, school, and bank holidays
- Sorting and stock rotation of donations and purchases, both ambient and fresh
- Making up parcels, both in advance and on delivery days
- Taking those parcels to people all across Rossendale
- Sharing excess donations with a range of partners throughout the valley
- Ongoing organising, tidying, and cleaning of the unit, contributing to our 5* hygiene rating and creating a more pleasant, less stressful, and safer working environment
- Receiving and dealing with referrals both within normal operating times and as emergencies
- Daily Unit Leaders seeing it all runs smoothly
- Continuing administration tasks ensuring we are responsive to need, respond to referrals in a timely manner and forward referrals to other support organisations as needed. This is alongside signposting, which enables people to retain some control and autonomy over often extremely difficult situations. This also ensures we stay in timely contact with Partner organisations and donors
- Regular posts to social media sites, sharing of posts and timely responses to queries and messages received
- Maintaining many different relationships – with referrers, Rossendale Borough Council, churches, schools, corporate donors, supermarkets, other charities and food groups, and private fundraisers
- Sourcing, sorting, and arranging delivery of non-food items and household goods
- All the tasks involved in the many little extras for Easter, Christmas, Mother's and Father's days, and Eid



- Organising and running the improved, auditable, CashFirst/Supermarket voucher schemes
- Maintenance and further development of our financial systems
- Creating and developing the referral data collection system to ensure timely reporting



of numbers to trustees and relevant external organisations (such as funding providers and national bodies), provide oversight for potential overuse/misuse of TRF services, allow analysis of patterns to enable better decision making

- Working together to change ways of operating to improve efficiency and, in particular, to make the organisation more resilient with actions such as ensuring every role can be covered by a number of people, and working in sub-teams to ensure coverage, for example the drivers' WhatsApp group
- Applying for, managing, and reporting on grant funding bids
- Managing the many Secretarial duties required of a charity
- Meeting our obligations as a registered charity and governance team



We would also like to thank the family, friends and neighbours of our volunteers who support them to do what they do.

4.3 In particular we wish to thank Caroline Collins, Volunteer and Referral Co-ordinator, whose unstinting work over the last ten years has been the heart of the organisation, and who ended her volunteering for Raft at the end of July 2022. Also, thanks to Mark Stapleton who, at last year's AGM, stepped down as the Chair of RAFT after 9 years in the role. His longstanding contribution is much appreciated, and we are pleased that he continues to offer his experience as a trustee. Covid got in the way of presenting him with his thank-you gift last year, so he had to wait a while. Finally, also thanks to Michelle Jones for her extended year as Chair during 2021 and 2022.



4.4 There were 24 operational volunteers on roll during 2022.

We estimate the average number of operational volunteering hours per year at 24,000. This would equate to £237,600 at a Living Wage of £9.90 an hour

There were six trustee volunteers during 2022, giving an average of 500 governance volunteer hours, equating to £41,580 at a Living Wage.

The majority of trustees perform roles within both the governance and operational teams



4.5 There were 4 new volunteers in 2022.

Post pandemic volunteer roles dropped back into more familiar patterns as Government guidelines changed and shielding volunteers returned. This was done slowly to consider changing public health guidance, ongoing infection rates, continued hygiene vigilance and volunteer confidence levels.

4.6 Two volunteers ended their volunteering with us, and we wish them all the best and extend our thanks for all their contributions.

4.7 The Raft Foundation is a wide and inclusive group and every year we are grateful for people in the various Rossendale communities who go above and beyond to help, whether that is folk donating regularly, when they can, or in response to our urgent needs call outs, Supermarket Community Champions and Pioneers donating food stock or supporting community token schemes and funding applications, school, church and friendship group collections, local business stock donations, Christmas tractor drives, reverse advent calendars and sports clubs running donation appeals and community group shares. Not to mention the fundraisers who have done Round-the-Hills walks, held children's table-top sales, church car boot sales, local business donations, and signed up to EasyFundraising.



5. Achievements and Performance

5.1 TRF, through its volunteers: -

- During 2022 we delivered
 - 66,066 meals to 3,146 people,
 - 211 lots of nappies and pull ups,
 - supplies for 855 pets during 2022.
- Please note that the figures in the previous Annual Report cover sixteen months of activity and so direct comparisons cannot be made. The numbers for 2021 only are 54,789 meals to 2,609 people, 163 lots of nappies and pull ups, and supplies for 565 pets. This represents almost 21% increase in general activity, 30% increase in provision of nappies and 51% increase in provision of pet foods.
- Adapted working methods to post pandemic conditions to keep all safe
- Continued supporting each other within our group of volunteers to the new working conditions
- Continued our active relationships with a wide range of local community, health and well-being groups and other community organisations in the Rossendale Connected Partnership, working for the good of Rossendale folk. Larger local statutory partners included Rossendale Borough Council Communities Team, GPs and Practice Managers, mental health workers, social prescribers, probation services, addiction support organisations, Citizens Advice and Rossendale Leisure Trust. Also included were more regional statutory partners based within Lancashire County Council
- Received a 10 Years of Service Recognition award from the Mayor of Rossendale and marked the 10year Anniversary of The RAFT Foundation.





- Shared resources with the valley-wide Rossendale Food Box Scheme, Positive Start Food Group, and community food share groups at Haslingden Community Link, to aid access to food provision and support neighbours with different levels of need
- Produced our first Charity Commission required Annual Report for September 2020 to December 2021
- Maintained our 5-star food hygiene rating and re-organised the unit to create a safer, more pleasant working environment
- Continued working with IFAN to raise awareness of food poverty, and by providing ongoing data, supporting their campaigns and calls to the government to address this issue.
- Worked with Rossendale Borough Council (RBC) to deliver food parcels to those whose financial crises had directly resulted from COVID, as well as general hardship due to cost-of-living increases
- Delivered voucher Comfort Schemes, supporting neighbours receiving parcels during more challenging and expensive times e.g. at Christmas, Easter, and school holidays, totalling £26,824
- Produced specific packs either to use surpluses such as lots of donated sour cream dips (loaded nachos packs), and orchard apples (apple crumble bundle) and or for seasonal events such as warming soup packs, and Back-to-School kits



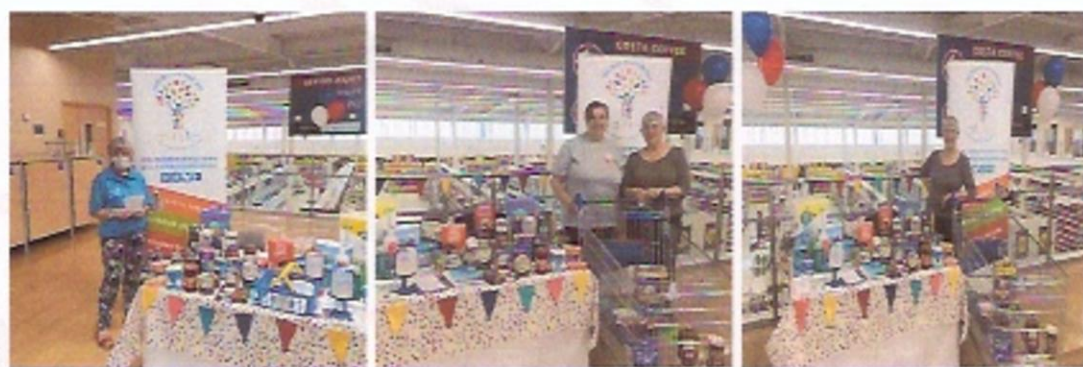
- During an unprecedented increase in demand due to fuel and food price increases, our Christmas focus was on helping as many individuals and families as possible across Rossendale with food and warmth, providing advent calendars and Christmas treats



- Supported the Christmas Rossendale Shine On Project, and CAP both based at Kay Street Baptist Church, who delivered three course meals plus gifts. Raft provided donations of socks, hats, gloves, and advent calendars for inclusion in their gift bags
- We continued to support the Rossendale Shine On project helping individuals experiencing isolation and loneliness, by promoting befriending and emotional well-being and sharing our supermarket surplus collections on a weekly basis throughout the rest of the year.
- Made donations of surplus fresh food to SafeSpace, the Rossendale Food Boxes scheme, Positive Action in the Community (PAC), Young Homeless Service, and Shine On
- Delivered masses of donated fresh flowers, potted plants, and spring bulbs with our parcels as well as to Nursing and Care Homes across Rossendale to brighten staff and residents' days, and we shared with other community projects too such as Rossendale Food Box Scheme, Haslingden Community Link, SafeSpace, Irwell Vale Community Group, Friends of Haslingden Cemetery and Civic Pride to name a few



- Delivered pampering L'Oreal gift bags keyworkers at Rossendale Hospice, staff and residents of Rossendale Care Homes
- Continued to provide seasonal treats such as Easter eggs, Mother's Day Gifts (including gifts for single Fathers), Father's Day Gifts, Birthday gifts
- Provided activity packs and books for kids during school holidays
- Provided back to school stationery packs for those children and adults returning to school, college and university
- Provided slow cookers, microwaves, kettles, toasters, and cook-books to people with reduced means of preparing food economically
- Provided blankets, socks, scarves, and hot water bottles to help people stay warm despite increasing fuel costs, following the principal of 'heat the person, not the room'
- Provided new baby welcome packs to Knitting Smiles for East Lancashire who run this project and put the boxes together
- Using our social media visibility to promote other local organisations' activities and appeals, and share information on support available
- Promoted Challenge Poverty Week England 2022
- Expanded public donation points
- Contributed to reduced food waste by working with FareShare and Neighbourly to redistribute excess food.
- Worked with the Community Champions at our local ASDA, TESCO and Co-Op stores and held in-store stalls to raise awareness of our charity and food poverty, promote support and donations.



- Completed our work with RBC on Worrying About Money leaflet and launched this in conjunction with IFAN (Independent Food Aid Network)



6. Financial Review

Review of the charity's financial position at the end of the period

6.1 See attached income and Expenditure statement as at 31st December 2022.
(Appendix 1)

Statement on TRF policy for holding reserves

6.2 The reserves prior to 2020 were historically extremely low, with TRF operating very much hand-to-mouth from its inception, insecurely dependant on the generosity of a small core of people and organisations making cash donations, some regularly and some intermittently, to cover ever-increasing overhead costs, especially rent. This meant that RAFT was always at risk of not being able to meet these costs.

This lack of financial reserves is a position not recommended by the Charity Commission, which expects trustees to pay due attention to a charity's financial sustainability.

6.3 Due to continuing support from Rossendale Borough Council in 2022, using government funds allocated to assist in ensuring access to food for people in financial crisis, and the overwhelming generosity of the Rossendale community, the reserves are currently in a much healthier position, in addition to having met the needs of 3,146 people over this period of time. Without all of their help we would not have been able to meet our fixed costs or have been in a position to continue to provide Rossendale with a much-needed food bank service.

6.4 Finally, the trustees have a responsibility (as expected by the Charity Commission) to maintain the viability of the TRF whilst ensuring we deliver current services and the changing needs of our community. The TRF's model is now sustainable and continuous, with the help of ongoing personal and company donations from our local community supporters.

Principal sources of funds

6.5 The principal sources of funds include: -

- Public donations of actual goods
- Public donations of money via collecting tins, online donations, and bank transfers
- Public fundraising activities such as gymathons and Christmas tractor collections
- Local churches, schools, groups & businesses donations
- Local supermarket donations and surplus food sharing
- Grant bids applied for successfully
- Cost-of-Living specific funding from a variety of foundations, supermarket schemes, and local government support.

Trustees maintain due diligence regarding financial donations, and we are members of the Fundraising Regulator. We always check sources of financial donations to make sure they are above board and to offer thanks accordingly.

Investment policy and objectives

6.6 Our policy is to hold a year's operating costs in the current account for immediate access, and any remaining funds in an appropriate interest earning account for longer term needs. The latter is still being researched due to ongoing volatility in financial sectors. Our key considerations will be rate of return on investment, accessibility, security of investment, and ethicality of investment.

A description of the principal risks facing the charity

6.7 The principal risks facing the charity, as common with most small charities are: -

- Reduction in or loss of donation streams
- Increased costs of running TRF, the main outgoing of which is the lease of premises, the purchase of essential insurance, utilities costs, and equipment (e.g. commercial



fridges & freezers, transportation cool boxes, cleaning equipment, carrier bags), and to provide volunteers with a safe base to operate from and in which to store and manage food supplies

- Notice could be given by our landlord at any point.
- The charity's volunteer-only basis, whilst meaning we operate very frugally, could, due to the nature of volunteering, leave us vulnerable to a number of risks, including:
 - loss of people in key roles
 - loss of those who give a large number of hours each week
 - potential for volunteers not being available on any given day
 - difficult-to-allocate tasks (either due to skills needed or time demands) leading to overload on the same few people
 - burnout of volunteers
 - ageing profile of volunteers generally
 - difficulty in delivering any potentially bigger vision for the charity
- The charity also relies heavily on the use of volunteers' own vehicles and fuel, some of them to a substantial degree. It would severely impact deliveries if this generosity were not available.

6.8 Reviewing the year against these risks, notable points were:

- Donation streams remained steady, and the trustees are grateful for the substantial support of Rossendale Borough Council in the costs of delivering our service
- Costs increased substantially due to a 21% increase in demand, inflationary pressures on food purchases, and an increase in premises & other fixed costs
- We did in fact lose the volunteer carrying out the Volunteer Co-ordinator role at the end of July. The trustees had previously created a Contingency and Resilience Plan which worked well in ensuring that the foodbank continued to operate effectively during this time. The trustees thank everyone involved in making this transition happen.
- A number of changes in working practices were implemented to improve resilience in volunteer roles. This is ongoing.
- We implemented a volunteer expenses policy to support drivers' fuel costs, particularly for drivers who incur substantial mileage on the foodbank's behalf. The massive rise in fuel costs experienced during 2022 resulted in an increase in volunteer expenses claimed as a result of the combined effect of rising fuel costs, requirement for volunteers to collect stock from FareShare, Preston Deopt and general rise in demand for TRF service.

Structure, Governance, and Management

7.1 The Raft Foundation is a Charitable Incorporated Organisation – Foundation model.

Trustee selection methods including details of any constitutional provisions e.g. election to post or name of any person or body entitled to appoint one or more trustees

7.2 Trustees are recruited via a visit to the operational unit, initial discussions with the Chair, an interview with fellow trustees, and appointment, as minuted, at a general management committee meeting. This process is to be augmented by asking any potential trustee who doesn't currently volunteer with TRF, to also work alongside other trustees (for example on a specific project) for a period of time, and to complete trustee responsibilities and duties training modules.

The intention is for both parties to ensure a good working match, and for potential trustees to be fully aware of the demands of the role.

Policies and procedures adopted for the induction and training of trustees

7.3 At this time, TRF meets the minimum required by the Charity Commission in sharing the initial guidance on the responsibilities of a trustee as given by the Charity Commission and via the expression of interest letters.

Whilst developing our induction and training package we have also been providing access to governance and trustee specific training via the organisations we have joined such as Charity Excellence, IFAN, ICO, NCVO, BPRCVS and Fundraising Regulator. We have also referred to specialist support available via Association of Chairs and ICSA, where necessary, too.



The charity's organisational structure and any wider network with which the charity works

7.4 The development of both trustee and operational roles is an ongoing piece of work, cascading through the organisation, to increase organisational resilience and sustainability, improve working practices, and ensure the volunteer experience is rewarding and in balance. During 2022, particularly the latter half following the resignation of the Volunteer Co-ordinator, we have made substantial changes to the internal aspects of the referral process, data gathering and report production, delivery days management, team working, volunteer communication, and unit organisation.

7.5 Reference and Administrative details

Charity name	The Raft Foundation
Other name the charity uses	N/A
Registered charity number	1191272
Charity's principal address	Room G1, Unit 5, New Hall Hey Business Centre, New Hall Hey Road, Rawtenstall, Lancashire, BB4 6HR

7.6 Names of the charity trustees who manage the charity

Trustee name	Office	Dates acted if not for whole year	Name of body entitled to appoint trustee
Julie Erwin	Chair	From 14-9-2022	Trust Board
Janice Johnson	Vice Chair	From 14-9-2022	Trust Board
Helen Jeeves	Secretary		
Gerard Greenhalgh	Treasurer		
Michelle Jones	Trustee		
Mark Stapleton	Trustee		

7.7 Names and addresses of advisers

Type of adviser	Name	Address
Legal	PD Greenhalgh Solicitors	6-10 Edward St, Glossop SK13 7AF
Accountant	Donnelly Bentley Chartered Accountants	70 Chorley New Rd, Bolton BL1 4BY

Exemptions from disclosure

7.8 None

7.9 Declarations



The trustees declare that they have approved the trustees' report above. Signed on behalf of the charity's trustees.

Name	Position	Signature	Date
Janice Johnson	Acting Chair	<i>J. Johnson</i>	29-10-23.
Gerard Greenhalgh	Treasurer	<i>G. Greenhalgh</i>	29.10.2023
Helen Jeeves	Secretary	<i>H. Jeeves</i>	29.10.2023



Appendix 1

Income and Expenditure Statement as at 31st December 2022

THE RAFT FOUNDATION

CHARITABLE INCORPORATED ORGANISATION

STATEMENT OF FINANCIAL ACTIVITIES (INCLUDING INCOME AND EXPENDITURE ACCOUNT)

FOR THE PERIOD 1 JANUARY 2022 TO 31 DECEMBER 2022

	Unrestricted Fund	Restricted Fund	Total Period Ended 31.12.22
Income:			
Voluntary Donations	56,547		56,547
Grants		50,000	52,500
Total Income	56,547	50,000	106,547
Expenditure:			
Expenditure on charitable activities	42,186	13,314	55,500
Total expenditure	42,186	13,314	58,500
Net Income/Expenditure for the period	14,361	36,686	51,047
Transfer between funds	36,686	-36,686	0
Balance brought forward 01/01/2022	84,414		84,414
Balance carried forward 31/12/2022	135,461	0	135,461

Of the balance carried forward:

Working Capital:	£75,461
Reserves for Capital Investment:	£60,000
Total:	£135,461

APPENDIX 2 VOLUNTEERS





The Raft Foundation

Suite G1 Unit 5, New Hall Hey Business Park, Rawtenstall, Lancashire, BB4 6HR

Registered Charity Number: 1191272

Date: 29th October 2023

DonnellyBentley
Chartered Accountants
Hazlemere
70 Chorley New Road
Bolton
BL1 4BY

Dear Sirs

The following representations are made on the basis of enquiries of management and staff with relevant knowledge and experience such as we consider necessary in connection with your independent examination of the charity's financial statements for the year ended 31 December 2022. These enquiries have included inspection of supporting documentation where appropriate. All representations are made to the best of our knowledge and belief.

General

- 1 We have fulfilled our responsibilities as trustees as set out in the terms of your engagement letter, under the Charities Act 2011 for preparing financial statements in accordance with applicable law and United Kingdom Accounting Standards (United Kingdom Generally Accepted Accounting Practice), for being satisfied that they give a true and fair view and for making accurate representations to you.
- 2 All the transactions undertaken by the charity have been properly reflected and recorded in the accounting records.
- 3 All the accounting records have been made available to you for the purpose of your independent examination. We have provided you with unrestricted access to all appropriate persons within the charity, and with all other records and related information requested, including minutes of all management and trustee meetings and correspondence with The Charity Commission.
- 4 The financial statements are free of material misstatements, including omissions.
- 5 The effects of uncorrected misstatements are immaterial both individually and in total.

Internal control and fraud

- 6 We acknowledge our responsibility for the design, implementation and maintenance of internal control systems to prevent and detect fraud and error. We have disclosed to you the results of our risk assessment that the financial statements may be misstated as a result of fraud.
- 7 We have disclosed to you all instances of known or suspected fraud affecting the entity involving management, or others that could have a material effect on the financial statements.
- 8 We have also disclosed to you all information in relation to allegations of fraud or suspected fraud affecting the entity's financial statements communicated by analysts, regulators or others.

Assets and liabilities

- 9 The charity has satisfactory title to all assets and there are no liens or encumbrances on the charity's assets, except for those that are disclosed in the notes to the financial statements.
- 10 All actual liabilities, contingent liabilities and guarantees given to third parties have been recorded or disclosed as appropriate.
- 11 We have no plans or intentions that may materially alter the carrying value and where relevant the fair value measurements or classification of assets and liabilities reflected in the financial statements.

Accounting estimates

- 12 Significant assumptions used by us in making accounting estimates, including those measured at fair value, are reasonable.

Legal claims

- 13 We have disclosed to you all claims in connection with litigation that have been, or are expected to be, received and such matters, as appropriate, have been properly accounted for, and disclosed in, the financial statements.

Laws and regulations

- 14 We have disclosed to you all known instances of non-compliance or suspected non-compliance with laws and regulations whose effects should be considered when preparing the financial statements.

Related parties

- 15 Related party relationships and transactions have been appropriately accounted for and disclosed in the financial statements. We have disclosed to you all relevant information concerning such relationships and transactions and are not aware of any other matters which require disclosure in order to comply with legislative and accounting standards requirements.

Subsequent events

- 16 All events subsequent to the date of the financial statements which require adjustment or disclosure have been properly accounted for and disclosed.

Going concern

- 17 We believe that the charity's financial statements should be prepared on a going concern basis on the grounds that current and future sources of funding or support will be more than adequate for the charity's needs. We have considered a period of twelve months from the date of approval of the financial statements. We believe that no further disclosures relating to the charity's ability to continue as a going concern need to be made in the financial statements.

Grants and donations

- 18 All grants, donations and other income, the receipt of which is subject to specific terms or conditions, have been notified to you. There have been no breaches of terms or conditions in the application of such income.

Yours faithfully

J Johnson (Janice Johnson)

Signed on behalf of the Board of Trustees

THE RAFT FOUNDATION

CHARITABLE INCORPORATED ORGANISATION

Registered Charity Number: 1191272

ANNUAL REPORT AND FINANCIAL STATEMENTS
FOR THE YEAR ENDED 31 DECEMBER 2022

THE RAFT FOUNDATION
CHARITABLE INCORPORATED ORGANISATION
REPORT AND FINANCIAL STATEMENTS
FOR THE YEAR ENDED 31 DECEMBER 2022

CONTENTS	PAGE
Charity Information	1
Trustees' Report	2
Independent Examiners' Report	3
Accounting Policies	4
Statement of Financial Activities	5
Balance Sheet	6
Notes to the Financial Statements	7

THE RAFT FOUNDATION**CHARITABLE INCORPORATED ORGANISATION****CHARITY INFORMATION****FOR THE YEAR ENDED 31 DECEMBER 2022****TRUSTEES:**

Julie Erwin (Chair)
Janice Johnson (Vice Chair)
Helen Jeeves (Secretary)
Ged Greenhalgh (Treasurer)
Michelle Jones
Mark Stapleton

REGISTERED CHARITY NUMBER:

1191272

PRINCIPAL SERVICE ADDRESS:

c/o 34 Greens Lane
Helmshore
Rossendale
BB4 4EX

BANKERS:

Nat West Bank
28 Bank Street
Rawtenstall
BB4 8TS

ACCOUNTANTS:

DonnellyBentley Limited
Hazlemere
70 Chorley New Road
Bolton
BL1 4BY

INDEPENDENT EXAMINER:

Mr J C Hargraves (Hons) FCA
DonnellyBentley Limited
Chartered Accountants
Hazlemere
70 Chorley New Road
Bolton
BL1 4BY

THE RAFT FOUNDATION

CHARITABLE INCORPORATED ORGANISATION

REPORT OF THE TRUSTEES

FOR THE YEAR ENDED 31 DECEMBER 2022

STRUCTURE, GOVERNANCE AND MANAGEMENT

The Raft Foundation formally became a charity and was registered as a charitable incorporated organisation in the North West of England on 14 September 2020 and is governed by its constitution. The Charity registered number is 1191272. The Charity is non-profit making and its trustees are volunteers.

The trustees are appointed by the members of the organisation at the Annual General Meeting. Trustees have the power under the governing documents to co-opt individuals who support the objects of the organisation to fill vacancies on the Board of Trustees.

As part of their induction, any new trustees are provided with information about the charity, the management structure, its history and working practices. In addition, they are also provided with information from the Charity Commission regarding the duties and responsibilities of trustees.

OBJECTIVES AND ACTIVITIES

The Raft Foundation was established to help provide relief of financial hardship amongst people in Rossendale and the surrounding areas by providing emergency food, essential toiletries, household items and other items gifted to the organisation for the benefit of individuals and families in need. Also the provision of such other means, including (but not limited to) the provision of support or signposting to relevant information and other advisory services are offered by the charity.

PUBLIC BENEFIT

We have referred to the guidance in the Charity Commission's general guidance on public benefit when reviewing our aims and objectives and in planning our future activities. In particular the trustees have considered the activities of the Charity as set out in the 'Objectives and Activities' section above, and the 'Achievements and Performance in the Year' and assessed their future plans. They are satisfied that the criteria for public benefit are comprehensively achieved.

ACHIEVEMENTS AND PERFORMANCE IN THE YEAR

- During 2022 we delivered:
 - 66,066 meals to 3,146 people,
 - 211 lots of nappies and pull ups,
 - supplies for 855 pets during 2022.
- Please note that the figures in the previous Annual Report cover sixteen months of activity and so direct comparisons cannot be made. The numbers for 2021 only are 54,789 meals to 2,609 people, 163 lots of nappies and pull ups, and supplies for 565 pets. This represents almost 21% increase in general activity, an almost 30% increase in provision of nappies and a 51% increase in provision of pet foods.

THE RAFT FOUNDATION

CHARITABLE INCORPORATED ORGANISATION

REPORT OF THE TRUSTEES

FOR THE YEAR ENDED 31 DECEMBER 2022

ACHIEVEMENTS AND PERFORMANCE IN THE YEAR (Continued)

- Adapted working methods to post pandemic conditions to keep all safe
- Continued supporting each other within our group of volunteers to the new working conditions
- Continued our active relationships with a wide range of local community, health and well-being groups and other community organisations in the Rossendale Connected Partnership, working for the good of Rossendale folk. Larger local statutory partners included Rossendale Borough Council Communities Team, GPs and Practice Managers, mental health workers, social prescribers, Probation services, Addiction support organisations, Citizens Advice and Rossendale Leisure Trust. Also included were more regional statutory partners based within Lancashire County Council
- Received a 10 Years of Service Recognition award from the Mayor of Rossendale and marked the 10year Anniversary of The RAFT Foundation



- Shared resources with the valley-wide Rossendale Food Box Scheme, Positive Start Food Group, and community food share groups at Haslingden Community Link, to aid access to food provision and support neighbours with different levels of need
- Produced our first Charity Commission required Annual Report for September 2020-December 2021
- Maintained our 5-star food hygiene rating and re-organised the unit to create a safer, more pleasant working environment
- Continued working with IFAN to raise awareness of food poverty, and by providing ongoing data, supporting their campaigns and calls to the government to address this issue

THE RAFT FOUNDATION

CHARITABLE INCORPORATED ORGANISATION

REPORT OF THE TRUSTEES

FOR THE YEAR ENDED 31 DECEMBER 2022

ACHIEVEMENTS AND PERFORMANCE IN THE YEAR (Continued)

- Worked with Rossendale Borough Council (RBC) to deliver food parcels to those whose financial crises had directly resulted from COVID, as well as general hardship due to cost-of-living increases
- Delivered voucher Comfort Schemes, supporting neighbours receiving parcels during more challenging and expensive times e.g. at Christmas, Easter, and school holidays.
- Produced specific packs either to use surpluses such as lots of donated sour cream dips (loaded nachos packs), and orchard apples (apple crumble bundle) and or for seasonal events such as warming soup packs, and Back-to-School kits



- During an unprecedented increase in demand due to fuel and food price increases, our Christmas focus was on helping as many individuals and families as possible across Rossendale with food and warmth, providing advent calendars and Christmas treats.



- Supported the Christmas Rossendale Shine On Project, and CAP both based at Kay Street Baptist Church, who delivered three course meals plus gifts. Raft provided donations of socks, hats, gloves, and advent calendars for inclusion in their gift bags
- We continued to support the Rossendale Shine On project helping individuals experiencing isolation and loneliness, by promoting befriending and emotional well-being and sharing our supermarket surplus collections on a weekly basis throughout the rest of the year

THE RAFT FOUNDATION

CHARITABLE INCORPORATED ORGANISATION

REPORT OF THE TRUSTEES

FOR THE YEAR ENDED 31 DECEMBER 2022

ACHIEVEMENTS AND PERFORMANCE IN THE YEAR (Continued)

- Made donations of surplus fresh food to SafeSpace, the Rossendale Food Boxes scheme, Positive Action in the Community (PAC), Young Homeless Service, and Shine On
- Delivered masses of donated fresh flowers, potted plants, and spring bulbs with our parcels as well as to Nursing and Care Homes across Rossendale to brighten staff and residents' days, and we shared with other community projects too such as Rossendale Food Box Scheme, Haslingden Community Link, SafeSpace, Irwell Vale Community Group, Friends of Haslingden Cemetery and Civic Pride to name a few.



- Delivered pampering L'Oreal gift bags keyworkers at Rossendale Hospice, staff and residents of Rossendale Care Homes
- Continued to provide seasonal treats such as Easter eggs, Mother's Day Gifts (including gifts for single Fathers), Father's Day Gifts, Birthday gifts
- Provided activity packs and books for kids during school holidays
- Provided back to school stationery packs for those children and adults returning to school, college and university
- Provided slow cookers, microwaves, kettles, toasters, and cook-books to people with reduced means of preparing food economically
- Provided blankets, socks, scarves, and hot water bottles to help people stay warm despite increasing fuel costs, following the principal of 'heat the person, not the room'
- Provided new baby welcome packs to Knitting Smiles for East Lancashire who run this project and put the boxes together
- Using our social media visibility to promote other local organisations' activities and appeals, and share information on support available

THE RAFT FOUNDATION

CHARITABLE INCORPORATED ORGANISATION

REPORT OF THE TRUSTEES (CONTINUED)

FOR THE YEAR ENDED 31 DECEMBER 2022

ACHIEVEMENTS AND PERFORMANCE IN THE YEAR (Continued)

- Promoted Challenge Poverty Week England 2022
- Expanded public donation points
- Contributed to reduced food waste by working with FareShare and Neighbourly to redistribute excess food
- Worked with the Community Champions at our local ASDA, TESCO and Co-Op stores and held in-store stalls to raise awareness of our charity and food poverty, promote support and donations
- Completed our work with RBC on Worrying About Money leaflet and launched this in conjunction with IFAN.

RESERVES POLICY

It is the policy of the Charity to maintain unrestricted funds, which are free reserves of the Charity, at a level which as a minimum equates to approximately twelve months operating expenditure. A reserve in the order of £25,000 is considered sufficient since the Charity has little in the way of overheads and this would allow the Charity to react to changes in funding in a constructive manner.

FINANCIAL REVIEW

	£
The surplus for the period was	50,753
To which is added the surplus brought forward	<u>84,708</u>
Leaving a surplus carried forward of	<u>135,461</u>

TRUSTEES

The Trustees who served during the year are listed below:

Julie Erwin
 Janice Johnson
 Helen Jeeves
 Ged Greenhalgh
 Michelle Jones
 Mark Stapleton

THE RAFT FOUNDATION**CHARITABLE INCORPORATED ORGANISATION****REPORT OF THE TRUSTEES (CONTINUED)****FOR THE YEAR ENDED 31 DECEMBER 2022****TAXATION**

The Trustees are of the opinion that as a charity the organisation will be exempt from taxation and will be granted exemption by the Inland Revenue under the provisions of section 505 of the Income and Corporation Taxes Act 1988.

STATEMENT OF TRUSTEES' RESPONSIBILITIES

The trustees are responsible for preparing the Trustees' Report and the financial statements in accordance with applicable law and United Kingdom Accounting Standards (United Kingdom Generally Accepted Accounting Practice).

The law applicable to charities in England & Wales requires the trustees to prepare financial statements for each financial year, which give a true and fair view of the state of affairs of the charity and of the incoming resources and application of resources of the charity for that period. In preparing these financial statements the trustees are required to:

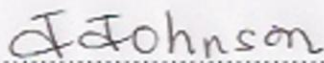
- Select suitable accounting policies and then apply them consistently;
- Observe the methods and principles in the Charities SORP;
- Make judgements and estimates that are reasonable and prudent;
- State whether applicable accounting standards have been followed, subject to any material departures disclosed and explained in the financial statements;
- Prepare the financial statements on the going concern basis unless it is inappropriate to presume that the charity will continue in operation.

The trustees are responsible for keeping adequate accounting records that disclose with reasonable accuracy at any time the financial position of the charity and enable them to ensure that the financial statements comply with the Charities Act 2011, the Charity (Accounts Reports) Regulations 2008 and trust deed. They are also responsible for safeguarding the assets of the charity and hence for taking reasonable steps for the prevention and detection of fraud and other irregularities.

INDEPENDENT EXAMINER

A resolution will be proposed at the Annual General Meeting to appoint Mr Jonathan Hargraves of Donnelly Bentley, Chartered Accountants and Registered Auditor, as the Independent Examiner to the Charity.

APPROVED BY THE TRUSTEES AND SIGNED ON BEHALF OF THE TRUSTEES BY:


.....
Janice Johnson - Trustee

Date: 30 October 2023

THE RAFT FOUNDATION

CHARITABLE INCORPORATED ORGANISATION

INDEPENDENT EXAMINER'S REPORT TO THE TRUSTEES OF THE RAFT FOUNDATION FOR THE YEAR ENDED 31 DECEMBER 2022

I report on the accounts of The Raft Foundation for the year ended 31 December 2022 which are set out on pages 4 to 7.5F.

Respective responsibilities of trustees and examiner

The charity's trustees are responsible for the preparation of the accounts. The charity's trustees consider that an audit is not required for this year under section 144(2) of the Charities Act 2011 (the 2011 Act), and that an independent examination is needed.

It is my responsibility to:

- Examine the accounts under section 145 of the 2011 Act;
- Follow the procedures laid down in the General Directions given by the Charity Commission under section 145(5)(b) of the 2011 Act; and
- State whether particular matters have come to my attention.
- To adhere to the FRC Ethical Standard when conducting review engagements, including "Provisions Available for Small Entities" as described in the circumstances set out in note 16 to the financial statements.

Basis of independent examiner's statement

My examination was carried out in accordance with the General Directions given by the Charity Commission. An examination includes a review of the accounting records kept by the charity and a comparison of the accounts presented with those records. It also includes consideration of any unusual items or disclosures in the accounts, and seeking explanations from you as trustees concerning any such matters. The procedures undertaken do not provide all the evidence that would be required in an audit, and consequently no opinion is given as to whether the accounts present a "true and fair view" and the report is limited to those matters set out in the statement below.

Independent examiner's statement

Since the gross income for the year exceeds the amount provided in section 145(3) of the Act, I confirm that I am qualified to act as Independent Examiner under the provisions of that section of the Act and that my qualification is as shown below.

In connection with my examination, no matter has come to my attention:

(1) which gives me reasonable cause to believe that, in any material respect, the requirements:

- to keep accounting records in accordance with section 130 of the 2011 Act; and
- to prepare accounts which accord with the accounting records and comply with the accounting requirements of the 2011 Act have not been met; or

(2) to which, in my opinion, attention should be drawn in order to enable a proper understanding of the accounts to be reached.

Mr J C Hargraves, BA FCA
DonnellyBentley
Chartered Accountants
Hazlemere
70 Chorley New Road
Bolton, BL1 4BY

Date: 30 October 2023

THE RAFT FOUNDATION

CHARITABLE INCORPORATED ORGANISATION

ACCOUNTING POLICIES

FOR THE YEAR ENDED 31 DECEMBER 2022

The principal policies adopted in the Financial Statements are set out below.

BASIS OF ACCOUNTING

The financial statements have been prepared in accordance with Accounting and Reporting by Charities: Statement of Recommended Practice applicable to charities preparing their accounts in accordance with the Financial Reporting Standard applicable in the UK and Republic of Ireland (FRS 102) (effective 1 January 2020) – (Charities SORP (FRS 102)), the Financial Reporting Standard applicable in the UK and Republic of Ireland (FRS 102) and the Charities Act 2011.

The charity constitutes a public benefit entity as defined by FRS 102.

FUND ACCOUNTING

Unrestricted funds represent the accumulated funds of the charity that are not subject to any restrictions regarding their use, and are available in the furtherance of the general objectives of the charity.

Designated funds are designated by the Trustees for particular purposes, and are also unrestricted, as these monies can be re-assigned by the Trustees if so required.

INCOME

All income is included in the statement of financial activities when the Charity is entitled to the income and the amount can be quantified with reasonable accuracy.

Income includes grants in respect of revenue and capital items.

EXPENDITURE

Expenditure is recognised on an accrual basis as a liability is incurred.

- Charitable expenditure comprises those costs incurred by the Charity in the delivery of its activities and services for its beneficiaries. It includes both costs that can be allocated directly to such activities and those costs of an indirect nature necessary to support them.
- All costs are allocated between the expenditure categories on a basis designed to reflect the use of the resource. Costs relating to a particular activity are allocated directly, others are apportioned on an appropriate basis.

Grants payable are charged in the year when the offer is made except in those cases where the offer is conditional, such grants being recognised as expenditure when the conditions attaching are fulfilled. Grants offered subject to conditions which have not been met at the end of the year are noted as a commitment, but not accrued as expenditure.

TAXATION

No provision has been made for taxation as exemption from taxation is being granted by the Inland Revenue under the provisions of Section 505 of the Income and Corporation Taxes Act 1988.

THE RAFT FOUNDATION

CHARITABLE INCORPORATED ORGANISATION

ACCOUNTING POLICIES (CONTINUED)

FOR THE YEAR ENDED 31 DECEMBER 2022

VAT ACCOUNTING

The Charity is not liable to be registered for VAT. Irrecoverable VAT on expenditure is not analysed separately but attributed to the category of expenditure on which it is incurred.

TANGIBLE FIXED ASSETS

Fixed assets are stated at cost less accumulated depreciation.

Depreciation is provided on all tangible fixed assets at rates as follows:

Plant and machinery	25% per annum	reducing balance method
Computer equipment	25% per annum	straight line method

CASH AT BANK AND IN HAND

Cash at bank and in hand includes cash and short term highly liquid investments with a short maturity of three months or less from the date of acquisition or opening of the deposit or similar account.

CREDITORS AND PROVISIONS

Creditors and provisions are recognised where the charity has a present obligation resulting from a past event that will probably result in the transfer of funds to a third party and the amount due to settle the obligation can be measured or estimated reliably. Creditors and provisions are normally recognised at their settlement amount after allowing for any discounts due.

CASH FLOW STATEMENT

The Board of Trustees have elected to take advantage of the exemption under Update Bulletin 1 of the Charities SORP (FRS 102) not to prepare a cash flow statement.

GOING CONCERN

The trustees have reviewed the circumstances of THE RAFT FOUNDATION and consider that adequate resources continue to be available to fund the activities of the charity for the foreseeable future. The trustees are of the view that the charity is a going concern.

JUDGEMENTS AND KEY SOURCES OF ESTIMATION UNCERTAINTY

The preparation of these financial statements require certain judgements, estimates and assumptions that affect the reported amounts of assets, liabilities, income and expenses. Estimates and judgements are continually evaluated and are based on historical experience and other factors, including expectations of future events that are believed to be reasonable under the circumstances.

THE RAFT FOUNDATION

CHARITABLE INCORPORATED ORGANISATION

STATEMENT OF FINANCIAL ACTIVITIES (INCLUDING INCOME AND EXPENDITURE ACCOUNT)

FOR THE YEAR ENDED 31 DECEMBER 2022

	Unrestricted Fund £	Restricted Fund £	Total Period End 31/12/2022 £	Total Period End 31/12/2021 £
Income:				
Voluntary donations	56,547	-	56,547	99,054
Grants	50,000	2,500	52,500	5,000
Total Income	106,547	2,500	109,047	104,054
Expenditure:				
Expenditure on charitable activities	55,500	2,794	58,294	37,850
Total Expenditure	55,500	2,794	58,294	37,850
Net income/(expenditure) for the period	51,047	(294)	50,753	66,204
Transfers	-	-	-	-
Balance brought forward 01/01/2022	84,414	294	84,708	18,504
Balance carried forward 31/12/2022	135,461	-	135,461	84,708

THE RAFT FOUNDATION

CHARITABLE INCORPORATED ORGANISATION

STATEMENT OF FINANCIAL ACTIVITIES (INCLUDING INCOME AND EXPENDITURE ACCOUNT)

FOR THE YEAR ENDED 31 DECEMBER 2022

	Unrestricted £	DFP001 £	Total as per page 5 £
Income:			
Donations	56,547	-	56,547
Grants	-	50,000	50,000
Total Income	<u>56,547</u>	<u>50,000</u>	<u>106,547</u>
Expenditure:			
Expenditure on charitable activities	42,186	13,314	55,500
Total Expenditure	<u>42,186</u>	<u>13,314</u>	<u>55,500</u>
Net income/(expenditure) for the period	14,361	36,686	51,047
Transfers between funds	36,686	(36,686)	-
Fund Balance brought forward 01/01/2022	84,414	-	84,414
Fund Balance carried forward 31/12/2022	<u>135,461</u>	<u>-</u>	<u>135,461</u>

DFP001 Designated Fund – Rossendale Borough Council 2022 – food parcel funding

THE RAFT FOUNDATION

CHARITABLE INCORPORATED ORGANISATION

STATEMENT OF FINANCIAL ACTIVITIES (INCLUDING INCOME AND EXPENDITURE ACCOUNT)

FOR THE YEAR ENDED 31 DECEMBER 2022

	RFP002 £	RFP004 £	RFP005 £	Total as per page 5 £
Income:				
Donations	-	-	-	-
Grants	-	1,000	1,500	2,500
Total Income	-	1,000	1,500	2,500
Expenditure:				
Expenditure on charitable activities	294	1,000	1,500	2,794
Total Expenditure	294	1,000	1,500	2,794
Net income/(expenditure) for the period	(294)	-	-	(294)
Transfers between funds	-	-	-	-
Fund Balance brought forward 01/01/2022	294	-	-	294
Fund Balance carried forward 31/12/2022	-	-	-	-

RFP002 – IFAN Funding

RFP004 – Lancashire County Council April/May 2022 – fresh food funding

RFP005 – Neighbourly 2022 – fresh food funding

THE RAFT FOUNDATION

CHARITABLE INCORPORATED ORGANISATION

BALANCE SHEET

AS AT 31 DECEMBER 2022

	Note	As At 31/12/2022		As at 31/12/2021	
		£	£	£	£
FIXED ASSETS					
Tangible fixed assets	3		1,546		1,768
CURRENT ASSETS					
Cash at bank and in hand		135,684		83,840	
CREDITORS: AMOUNTS FALLING DUE WITHIN ONE YEAR	4				
		<u>(1,769)</u>		<u>(900)</u>	
NET CURRENT ASSETS			<u>133,915</u>		<u>82,940</u>
TOTAL ASSETS LESS CURRENT LIABILITIES			<u>135,461</u>		<u>84,708</u>
Represented By:					
FUNDS					
Restricted funds			-		294
Unrestricted funds			<u>135,461</u>		<u>84,414</u>
	5 & 6		<u>135,461</u>		<u>84,708</u>

The financial statements on pages 4 to 7.5 were approved by the trustees and signed on their behalf by:-

J. Johnson.
Janice Johnson - Trustee

Ged Greenhalgh
Ged Greenhalgh - Trustee

Date: 30 October 2023

THE RAFT FOUNDATION

CHARITABLE INCORPORATED ORGANISATION

NOTES TO THE FINANCIAL STATEMENTS

FOR THE YEAR ENDED 31 DECEMBER 2022

1. INCOME

The income is entirely attributable to the Charity's principal aims and objectives.

The operating surplus is stated after:

	Period Ended 31/12/2022 £	Period Ended 31/12/2021 £
Trustees remuneration	-	-

	Unrestricted £	DFP001 £	RFP002 £	RFP004 £	RFP005 £	Total 31/12/2022 £	Total 31/12/2021 £
Donations	56,547	-	-	-	-	56,547	99,054
Grants	-	50,000	-	1,000	1,500	52,500	5,000
	56,547	50,000	-	1,000	1,500	109,047	104,054

DPP001 Designated Fund – Rossendale Borough Council 2022 – food parcel funding

Restricted Funds:

RFP002 – IFAN Funding

RFP004 – Lancashire County Council April/May 2022 – fresh food fundings

RFP001 – Neighbourly 2022 – fresh food funding

THE RAFT FOUNDATION

CHARITABLE INCORPORATED ORGANISATION

NOTES TO THE FINANCIAL STATEMENTS (CONTINUED)

FOR THE YEAR ENDED 31 DECEMBER 2022

2. EXPENDITURE

	Unrestricted	DFP001	RFP002	RFP004	RFP005	Total 31/12/2022	Total 31/12/2021
	£	£	£	£	£	£	£
Direct costs:							
Food	-	12,615	294	1,000	1,500	15,409	7,001
Cooking equipment	-	158	-	-	-	158	513
Donatable clothing	1,512	541	-	-	-	2,053	305
Supermarket vouchers	26,824	-	-	-	-	26,824	12,895
Support costs:							
Rent	10,190	-	-	-	-	10,190	10,710
Repairs and renewals	151	-	-	-	-	151	228
Light and heat	-	-	-	-	-	-	175
Telephone	232	-	-	-	-	232	279
Motor and travel	405	-	-	-	-	405	2,380
Insurance	409	-	-	-	-	409	409
Printing, post and stationery	47	-	-	-	-	47	83
Computer expenses	322	-	-	-	-	322	80
Subscriptions	224	-	-	-	-	224	135
Cleaning	249	-	-	-	-	249	232
Sundry expenses	212	-	-	-	-	212	621
Training	-	-	-	-	-	-	754
Governance costs:							
Accountancy	800	-	-	-	-	800	600
Finance costs:							
Bank charges	101	-	-	-	-	101	231
Depreciation:							
Plant and machinery	344	-	-	-	-	344	28
Computer equipment	164	-	-	-	-	164	191
	42,186	13,314	294	1,000	1,500	58,294	37,850

DFP001 Designated Fund – Rossendale Borough Council 2022 – food parcel funding

Restricted Funds:

RFP002 – IFAN Funding

RFP004 – Lancashire County Council April/May 2022 – fresh food fundings

RFP001 – Neighbourly 2022 – fresh food funding

THE RAFT FOUNDATION

CHARITABLE INCORPORATED ORGANISATION

NOTES TO THE FINANCIAL STATEMENTS (CONTINUED)

FOR THE YEAR ENDED 31 DECEMBER 2022

3. FIXED ASSETS

	Plant and Machinery £	Computer Equipment £	Total £
COST OR VALUATION			
At 31 December 2021	1,331	656	1,987
Additions	286	-	286
Disposals	-	-	-
At 31 December 2022	<u>1,617</u>	<u>656</u>	<u>2,273</u>
DEPRECIATION			
At 31 December 2021	28	191	219
Charge for Year	344	164	508
Depreciation on disposals	-	-	-
At 31 December 2022	<u>372</u>	<u>355</u>	<u>727</u>
NET BOOK VALUE			
At 31 December 2022	<u>1,245</u>	<u>301</u>	<u>1,546</u>
NET BOOK VALUE			
At 31 December 2021	<u>1,303</u>	<u>465</u>	<u>1,768</u>

4. CREDITORS – AMOUNTS FALLING DUE WITHIN ONE YEAR

	At at 31/12/2022 £	As at 31/12/2021 £
Accruals	1,445	600
Other creditors	<u>324</u>	<u>300</u>
	<u>1,769</u>	<u>900</u>

THE RAFT FOUNDATION

CHARITABLE INCORPORATED ORGANISATION

NOTES TO THE FINANCIAL STATEMENTS (CONTINUED)

FOR THE YEAR ENDED 31 DECEMBER 2022

5. ANALYSIS OF MOVEMENTS OF FUNDS IN THE PERIOD

	Unrestricted	DFP001	RFP002	RFP004	RFP005	Total 31/12/2022	Total 31/12/2021
	£	£	£	£	£	£	£
INCOME	56,547	50,000	-	1,000	1,500	109,047	104,054
EXPENSES	42,186	13,314	294	1,000	1,500	58,294	37,850
	14,361	36,686	(294)	-	-	50,753	66,204
TRANSFER BETWEEN FUNDS	36,686	(36,686)	-	-	-	-	-
FUNDS AT START	84,414	-	294	-	-	84,708	18,504
CLOSING BALANCES	135,461	-	-	-	-	135,461	84,708

DFP001 Designated Fund - Rossendale Borough Council 2022 - Food parcel funding

This fund is to subsidize the delivery of food parcels to members of the public who are in need due to the cost of living crisis during 2022. Any residual amounts remaining at the end of the year are to be absorbed into the unrestricted fund.

Restricted Funds:

RFP002 - IFAN Funding

This fund is to cover the increased demand for food and food transportation brought on by the Covid-19 crisis.

RFP004 Lancashire County Council Apr/May 2022 - Fresh food funding

This fund is to contribute to the cost of fresh food during the months of April and May 2022, for members of the public who are in need.

RFP005 Neighbourly 2022 - Fresh food funding

This fund is to contribute to the cost of fresh food during December 2022, for members of the public who are in need.

THE RAFT FOUNDATION

CHARITABLE INCORPORATED ORGANISATION

NOTES TO THE FINANCIAL STATEMENTS (CONTINUED)

FOR THE YEAR ENDED 31 DECEMBER 2022

6. ANALYSIS OF NET ASSETS BETWEEN FUNDS

Fund balances at 31 December 2022 are represented by:

	Unrestricted	DFP001	RFP002	RFP004	RFP005	Total 31/12/2022
	£	£	£	£	£	£
Tangible fixed assets	1,546	-	-	-	-	1,546
Current assets	135,684	-	-	-	-	135,684
Current liabilities	(1,769)	-	-	-	-	(1,769)
	<u>135,461</u>	<u>-</u>	<u>-</u>	<u>-</u>	<u>-</u>	<u>135,461</u>

DFP001 Designated Fund – Rossendale Borough Council 2022 – food parcel funding

Restricted Funds:

RFP002 – IFAN Funding

RFP004 – Lancashire County Council April/May 2022 – fresh food fundings

RFP001 – Neighbourly 2022 – fresh food funding

Fund balances at 31 December 2021 are represented by:

	Unrestricted	RFP001	RFP002	RFP003	Total 31/12/2021
	£	£	£	£	£
Tangible fixed assets	1,768	-	-	-	1,768
Current assets	83,546	-	294	-	83,840
Current liabilities	(900)	-	-	-	(900)
	<u>84,414</u>	<u>-</u>	<u>-</u>	<u>-</u>	<u>84,708</u>

RFP001 – Community Foundation for Lancs

RFP002 – IFAN Funding

RFP003 – LCC Community Grant Scheme – Training

THE RAFT FOUNDATION**CHARITABLE INCORPORATED ORGANISATION****NOTES TO THE FINANCIAL STATEMENTS (CONTINUED)****FOR THE YEAR ENDED 31 DECEMBER 2022****7. TRANSACTIONS WITH TRUSTEES**

In the previous period there was one transaction between Ged Greenhalgh and the Charity where he lent £300 during a time when the Charity's bank card was temporarily disabled. The amount was repaid and is reflected in the 'other creditors' balance.

In the year, Ged Greenhalgh, the treasurer, was also acting as treasurer for a separate entity, All Saints School. As The RAFT Foundation's bank offers a coin machine facility where large amounts of coins can be banked directly into the their bank account, he has used this to bank coins from All Saints School's own collections and then transfer the money out to the School's bank account. At the year end, there is a total of £324 being held in The RAFT Foundation's bank account which is to be transferred after the year end, and is reflected in the 'other creditors' balance.

8. RELATED PARTY TRANSACTIONS

There are no related party transactions in the year.

9. CAPITAL COMMITMENTS

The Charity had no capital commitments at the year end.

10. ULTIMATE CONTROLLING PARTY

The Charity is under the control of the Board of Trustees.

11. FRC ETHICAL STANDARD – PROVISIONS AVAILABLE FOR SMALL ENTITIES

In common with other charities of our size and nature, we use our Independent Examiner to assist with the preparation of financial accounts.