

Registered Charity no. 1191152

Pudsey Community Project
Charitable Incorporated Organisation

Trustees Annual Report and Accounts

Year Ended 31st December 2024



Pudsey Community Project

Year Ended 31st December 2024

Contents Page

	Page
Legal and Administrative Information	1
Trustees' Annual Report	2
Independent Examiners Report	17
Statement of Financial Activities	18
Statement of Financial Position	19
Notes to the Financial Statements	20

Pudsey Community Project

Year Ended 31st December 2024

Legal and Administrative Information

Reference

The Charity is called "Pudsey Community Project". The organisation is registered as a Charitable Incorporated Organisation (CIO) with the Charity Commission for England and Wales and was registered on the 4th of September 2020.

Registered Charity Number	1191152	
Registered Office	Pudsey Community Project Fartown Pudsey LS28 8LP	
Trustees	Emma Louise Douglas Chris Dunford-Kelk Sophie Roche Lindsay Wagstaff Moira Merritt	Chair Appointed 12 June 2024 Resigned 12 June 2024
Primary Bankers	CAF Bank Ltd 25 Kings Hill West Malling, Kent ME19 4JQ	
Independent Examiner	Nigel Wyatt BSC FCA Wyatt & Co Chartered Accountants 125 Main Street Garforth Leeds LS25 1AF	

Pudsey Community Project

Year Ended 31st December 2024

Trustees' Annual Report

The Trustees are pleased to present their Annual Report together with the consolidated financial statements of the charity for the year ending 31 December 2024.

Structure, Governance and Management

Pudsey Community Project is governed by its Constitution, agreed in September 2020 and amended in June 2024.

Trustees are appointed with regard to the skill, knowledge and experience needed for the effective administration of the CIO and appointed for a term of three years by resolution passed at a convened meeting of the charity trustees.

Objectives and Activities

The purposes of the charity are:

For the public benefit in Pudsey and its surrounding areas, the relief of those in need by reason of age, ill health, disability, financial hardship or social disadvantage by the provision of a range of social and community engagement services delivered with a Christian ethos.

We achieve this through a range of services and groups which are delivered to people treated equally on the basis of gender, age, disability, religion, belief, sexual orientation, marital status or race. The Trustees give due consideration to the Charity Commission's published guidance on the Public Benefit required under the Charities Act 2011.

Our primary locality of work is Pudsey and its surrounding areas – effectively the two council wards of Pudsey and Calverley & Farsley (including Pudsey, Calverley, Farsley, Swinnow, Tyersal, Rodley and Woodhall) but Reduce Reuse Kids' Clothes operates wider and welcomes customers from across Leeds Metropolitan Borough Area.

Our vision and service provision is detailed below in our Impact report.

Financial Review

In 2024, we have stabilised our income and expenditure while continuing to significantly grow the charity's operations and developing our team of 9 employees (a mix of full and part-time) and 110 volunteers.

We have been successful in establishing funding streams from donations and grants, which we are very grateful for, that will enable us to continue to operate with confidence, continue to employ much-needed staff to coordinate our amazing volunteers, and to develop the charitable work of the Project, including the many costs of inhabiting our dedicated charity building. We close the financial year with a healthy balance, which will enable continued work as funding streams become more competitive and financial support becomes restricted in the continuing cost-of-living crisis.

The balance held by Pudsey Community Project at the end of the year was:

	31 st December 2024
	£
Restricted Funds	88,424
Unrestricted funds	<u>76,027</u>
Total Funds	164,451

Pudsey Community Project

Year Ended 31st December 2024

Trustees' Annual Report

Reserves Policy

The Trustees have a reserves policy of ideally holding a minimum of three months of running costs (for 2024, this was approx. £67,000), aside from restricted funds. At the end of the year, Pudsey Community Project held just over their ideal reserve in unrestricted funds.

Going Concern

The Trustees of Pudsey Community Project agree that there are no uncertainties about the charity's ability to continue as a going concern at the date of approving the accounts.

Achievement and Performance

Our Vision: Pudsey Community Project exists to transform Pudsey and its surrounding areas (an area of 20,000 households) with and for the local community, especially those who are most vulnerable and disadvantaged.

The following pages give an indication of the exciting work of the Project throughout 2024, as well as some indication of our hopes for 2025 and beyond.



Impact Report

2024



Charity Registration Number 119 1152

Introduction

Pudsey Community Project is a grassroots charity which began in 2020.

We exist to transform Pudsey and its surrounding areas (a reach of 20,000 households) with and for the local community, especially those who are most vulnerable and disadvantaged. In 2024 we had a busy and exciting year for the charity in which we continued to develop our activities both to work to fix what's wrong in the area but also increasingly to see what's strong the local community and to celebrate and amplify it.

Our huge army of committed volunteers (for whom we are grateful each week) has enabled a wide variety of activities which you can read about in this report. Having so many volunteers shows how fun a place PCP can be to work and volunteer, and how many different ways to be involved we have.

In 2024 we have continued to offer a six-day-a-week emergency foodbank capacity but have been pleased to see a continuing shift from those accessing our food aid moving to being supported by our sustainable pantry network model which allows an empowering choice-based food support alongside signposting services.

We still support nearly 500 people each week of the year with food (and we are pleased that we are about to open our third Pantry venue in Farsley in early 2025) but we also offer a well-established web of programmes including the increasingly popular Reduce Reuse Kids' Clothes and an expanded youth and children's work provision.

Numbers at our weekly seniors' lunch club, pantry, youth work and children's clothes sessions have all been consistent and encouraging.

In 2024 we were also able to start our monthly Repair Cafe in February as well as our first Bereavement Support group in October. We offered an extensive programme of support for people seeking employment which saw several people find jobs for the first time or after sickness or crisis. We've even been excited to see how popular our new Little Free Library has been - offering free book lending outside our front door (made and painted by volunteers and staff).

We continued to work with community partners in our locality and across Leeds and were pleased to still be an active part of Leeds Community Anchor Network, including conducting our first Listening Well community listening exercise, which incorporated dozens of interviews and focus groups - this will be an annual exercise that will deepen as we grow in our learning about the community and how we listen deeply and well.

We are proud of how our developing work has been able to impact our local area and we continue to learn how to work well in order to go on making a difference for many years to come.

We hope you enjoy reading some summaries of our 2024 work in this document as well as something of a look ahead to 2025, and we want to thank you for your support.

Pudsey Foodbank

Pudsey foodbank continues to provide emergency food parcels to people in crisis across Pudsey and Calverley/Farsley council wards. We operate across six days, and we can usually deliver food to people within 24 hours. We work alongside other agencies to both receive foodbank referrals and refer people on to further support. Our aim is always to support people to improve their financial situation so that they do not need food parcels in the future. Once we have helped clients out of their emergency situation, if they still need some support we invite them to our pantry for longer term access to low cost food.

In 2024:

We had around 25 volunteers each week, making up and delivering food parcels

We gave out 818 food parcels, supporting 236 households (almost the same as last year)

We supported an average of 68 individuals per month

We referred/signposted clients onto many other organisations including Money Buddies, Green Doctors, and Citizens Advice

We are really grateful for all the support we have received this year from our community, including local schools and businesses.

“You put me in touch with Green Doctors (energy efficiency experts), who came out to my house last week and were phenomenal. Thank you.”



Pudsey Community Pantry

Our pantry continues to support around 100 households a week to access affordable food and toiletries in a way that promotes dignity and control.

"You have reduced my food bill and provided an environment that is open and welcoming. Paying enables me to feel that I am buying rather than being given."

In 2024:

We had a total of 4832 visits

We supported over 300 households

We saved our customers a combined total of over £96,500 on their food bills.

In April we joined the FoodSavers Network, which allows customers to save into a Leeds Credit Union savings account each time they shop, improving financial resilience.

From April - Dec our customers put a total of £2282 into their savings accounts.

Through our pantry we also signpost members to further support, including energy, benefit, budgeting and employment advice.

"You helped me get central heating put into my flat. Thank you."

In October we launched an extra pantry session at Swinnow Community Centre. This allows many more people to access our pantry who would struggle to get to our building. In January we will be launching at a third location.



"Things have been really difficult recently financially due to poor mental health which has impacted my finances. Accessing the food pantry has been a lifeline to me and my family. Thank you."

From our survey of
pantry customers...

100% said they
felt welcomed
and treated with
respect

89% said coming
to the pantry made them
less anxious about feeding
themselves/their family

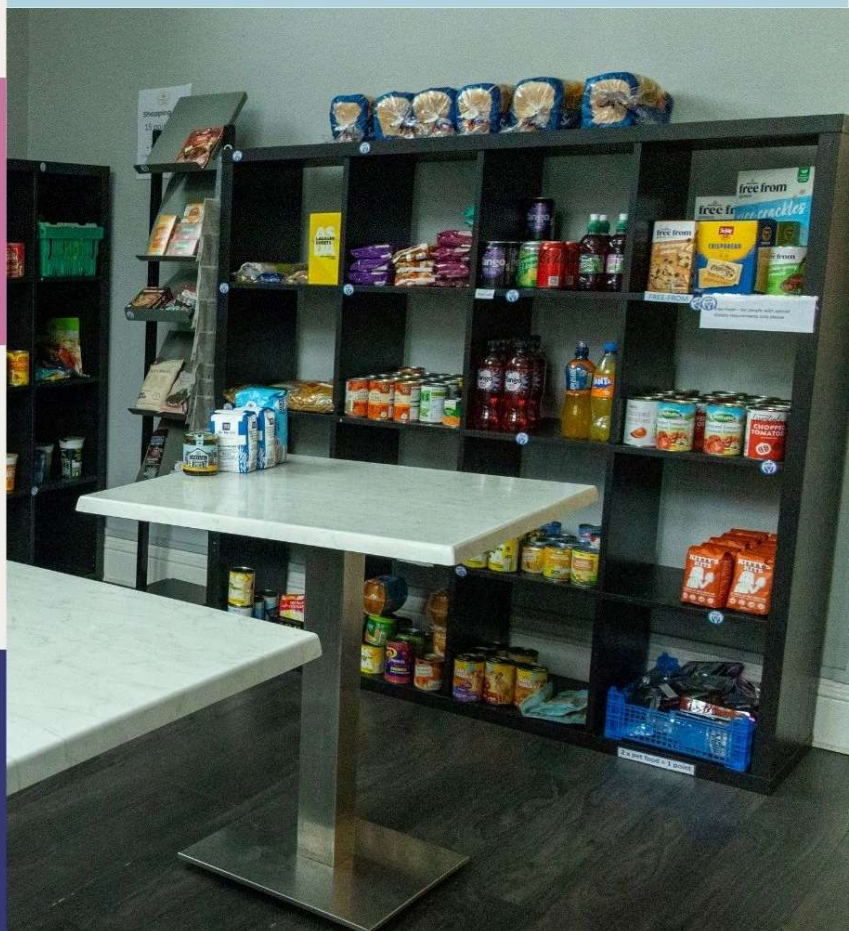
84% said they felt more
connected to the local
community since coming
to the pantry

92% said coming to the
pantry has improved their
household finances

97% said they were able
to access information
about other support whilst
at the pantry

100% said the
pantry offers a good
variety
of affordable,
healthy food

“I have been made welcome
and do not feel
uncomfortable or
embarrassed about
attending. Help is offered not
only with food but also
about what is going on in the
community and also a
pathway to other resources
as needed e.g. budgeting
and CV writing. Thank you
so much.”



Pudsey Seniors' Lunch Club



From our survey of 37 attendees...

89% said they felt more socially connected/less isolated since attending the lunch club

50% said their physical health had improved because of the lunch club

61% said their mental health had improved because of the lunch club

“The Seniors' Lunch Club has made Wednesdays a day to look forward to. A lovely meal, friendly staff, and good companionship for a very reasonable price.”

Our seniors' lunch club provides a regular place for older people to socialise and meet others, reducing social isolation.

We provide a two course meal each Wednesday lunchtime at a subsidised cost.

In 2024:

We had a team of around 12 volunteers cooking and serving lunch each week

We had an average of 28 attendees each week



“I come to meet other people who have been bereaved or live alone. It's wonderful! A godsend for so many.”

97% said the meals were healthy and nutritious

100% said they felt welcomed and treated with respect

Reduce Reuse Kids' Clothes

Our clothes scheme has been operating since summer 2019 and is the longest running of our projects. The aim is to save people money and help the planet by encouraging people to reuse kids' clothes rather than buy new. We accept donations and redistribute general clothes, coats and shoes for 0-12 year olds plus school uniform for all school ages. All clothes are free with the opportunity for customers to donate money or outgrown clothes if they wish to.

We are open to everyone but also work with local organisations to support vulnerable families by taking referrals or giving them some of our excess clothes. Organisations we have partnered with include Leeds Baby Bank, Meeting Point, Bramley Cluster and Swinnow Community Centre.

In 2024:

We had around 20 volunteers running seven sessions each week, as well as many extra events

We had 2588 visits and gave out 3070 bags of clothes

We have had eight companies spend volunteering days with us sorting donations

We have once again been part of the Leeds School Uniform Exchange and Leeds Winter Coat Appeal, in partnership with Zero Waste Leeds. We have collected and redistributed over 1150 coats this winter.

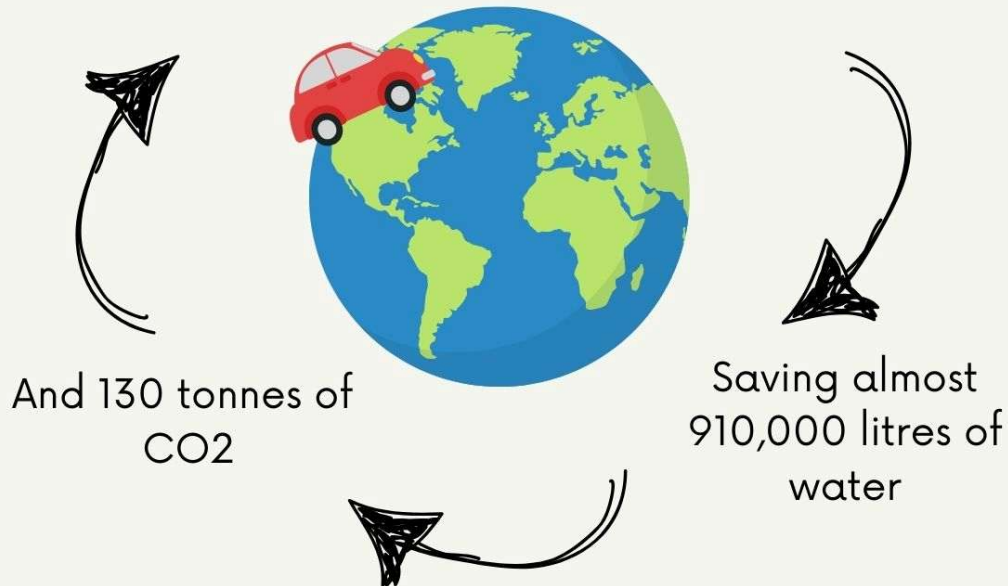
We have been excited to develop partnerships with local schools and have had visits from seven school councils/eco teams this year. We have been able to show the kids around the project and provide a lesson on sustainability in the fashion industry. The kids have also helped us to sort through some of our clothes donations.



Our environmental impact

The equivalent CO2 saving of driving a car around the world 27 times

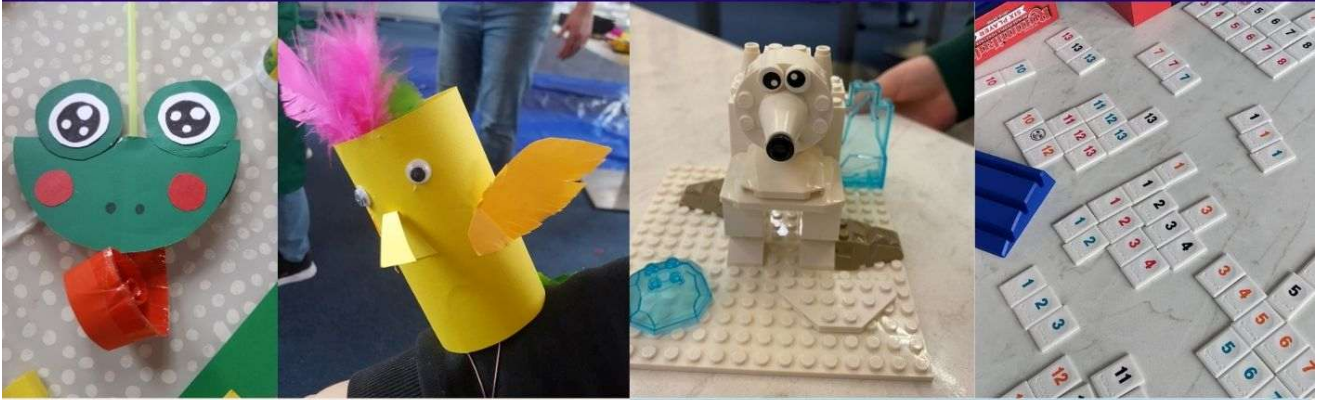
7.2 tonnes of fabric given out



"Knowing I am not wasting clothes and spending unnecessarily is amazing. I love knowing the clothes I have donated are going to be used again... As babies they go through clothes so quickly it feels like you're spending constantly but using your services massively reduces that cost which then allows us to spend money on other things. I think it's just fantastic. The way you organise the clothes is fantastic, the staff are so welcoming... I just think you're fab!"

"Really accessible secondhand kids clothes so I don't have to buy new and also a great place to donate secondhand clothes where I know they will have the best chance of being re-worn and not end up in landfill. Absolutely amazing - thank you!"

Youth & Children's Work



Our youth work provides a safe, friendly, and nurturing environment for young people to learn, grow and develop social skills whilst having fun!

In 2024:

We had a team of around 20 volunteers and 4 staff running 7 sessions each week as well as holiday clubs

We had around 300 kids attend our youth work with around 75 attending each week

"My son absolutely loves the cooking course, and it has been great for his mental health. He enjoys cooking his recipes for us regularly. He keeps asking when it starts again. He honestly came home from school some Tuesdays not in the best place and came out of cooking club a different kid. It totally relaxed him."

"Both my children really enjoyed the craft club, they came out of each session buzzing and the crafts they created were amazing, even as a parent I was amazed! The staff did a fantastic job at keeping them entertained by teaching them new crafts techniques."

In April we hired a Youth Work Lead to oversee and expand our youth work.

In June we launched an Arts & Crafts afterschool club for primary aged children, in response to feedback from successful holiday clubs. We now have afterschool/evening sessions for children aged 4-16, including a Games Cafe, Lego Club and Cookery Courses.

LS28 Repair Cafe

“The Repair Cafe is one of the best things in Pudsey.”

In February we launched our Repair Cafe, as part of the Leeds Repair Cafe network. The aim is to fix items rather than them being thrown away, to save people money, help the environment and build community. Our Repair Cafe is open every fourth Saturday of the month (except August and December) and is run by a team of volunteer fixers and general helpers. All fixes are free but donations towards the running costs are welcome.

In 2024:

We had a team of 9 fixers including electricians, seamstresses and general fixers

We fixed an average of 19 items at each session

Items fixed included hedge trimmers, lawnmowers, a grandmother clock and various items of clothing

We have been thrilled to be able to fix items with great sentimental value, including a CD player a woman used to listen to the CDs of her late husband

We have been very grateful for the community response we have received to this new initiative, both with people volunteering as fixers and people bringing items.



Pudsey Bereavement Support

In October we launched Pudsey Bereavement Support, after community consultation confirmed our recognition that there was little available bereavement support in the area, and that grief and loss (especially after the pandemic) was a significant driver for poor community mental health. As a charity we are here for the most vulnerable in our local community, and know many people struggle with grief from recent or long-past loss.

So as an initial response in the autumn we started a monthly drop-in cafe for those coping with grief and loss. Staffed by experienced and trained volunteers and staff, the Bereavement Cafe is a simple welcoming environment with drinks and cake, and the opportunity to be with others who know loss, and to chat or just be. It's open to anyone who is struggling with grief - whether recent or a long time ago, baby loss or miscarriage, the death of a relative or friend, or something similar.

This simple listening ear group has already demonstrated its need in the community with numbers reaching 15 at one group, and those attending saying they hugely value the lifeline it gives them and the freedom to be open about how they are coping (or not) with loss alongside people who understand and around whom they do not need to modify their language.

We hope to grow the work of Pudsey Bereavement Support as it becomes more established.



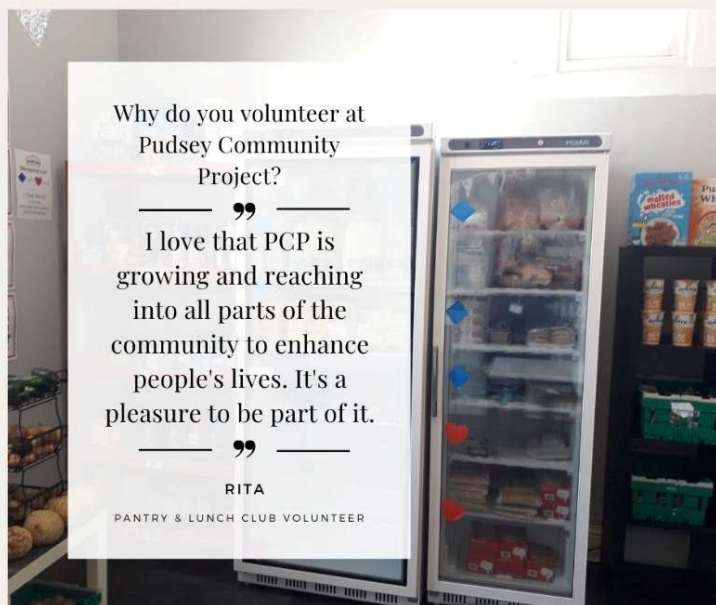
Plans for 2025

As we close the chapter on 2024 we already have begun our plans for 2025, and it's shaping up to be a busy and exciting year.

Having received capital funding we are planning the installation of a new lift (to allow us to properly access and extend to our lower hall) as well as extensive energy efficiency works (insulation, entirely new double glazed windows throughout the building, renewed electrical systems and new LED lights across every room).

We are planning the continued expansion of Reduce Reuse's capacity to provide for families across the city including participating in a schools' climate conference and holding 12 cost of living events in the most deprived priority wards of Leeds.

We will be continuing and developing all the regular work of our many activities - and carrying on listening closely to our community - and in 2025 we will be celebrating our fifth anniversary as a charity, recognising the distance we have all travelled together since the beginning of the covid pandemic.



Pudsey Community Project

Year Ended 31st December 2024

Trustees' Annual Report

Trustees' Responsibilities

The 2011 Charities Act require the Board of Trustees to prepare financial statements for each financial year which give a true and fair view of the state of the charity as at the end of the financial year and of the surplus or deficit of the charity. In preparing those financial statements, the Board is required to:-

- Select suitable accounting policies and apply them consistently.
- Make judgments and estimates that are reasonable and prudent.
- Prepare financial statements on a going concern basis unless it is inappropriate to presume that the trust will continue in existence.
- State whether applicable accounting standards and statements of recommended practice have been followed, subject to any material departures disclosed and explained in the financial statements;

The trustees are responsible for keeping proper accounting records, which disclose with reasonable accuracy at any time the financial position of the trust. They are also responsible for safeguarding the assets of the trust and hence for taking reasonable steps for the prevention and detection of fraud and other irregularities.

Signed on Behalf of the Trustees



Emma Louise Douglas

Name of Trustee

09/10/2025

Date:

Pudsey Community Project

Year Ended 31st December 2024

Independent Examiners Report

I report to the trustees on my examination of the financial statements of Pudsey Community Project ('the charity') for the year ended 31st December 2024.

Responsibilities and Basis of Report

As the trustees of the charity you are responsible for the preparation of the financial statements in accordance with the requirements of the Charities Act 2011 ('the Act').

I report in respect of my examination of the charity's financial statements carried out under section 145 of the 2011 Act and in carrying out my examination I have followed all the applicable Directions given by the Charity Commission under section 145(5)(b) of the Act.

Independent Examiner's Statement

I confirm that I am qualified to undertake the examination because I am a member of the Institute of Chartered Accountants in England and Wales (ICAEW), which is one of the listed bodies.

I have completed my examination. I confirm that no material matters have come to my attention in connection with the examination giving me cause to believe that in any material respect:

1. accounting records were not kept in respect of the charity as required by section 130 of the Act; or
2. the financial statements do not accord with those records; or
3. the financial statements do not comply with the applicable requirements concerning the form and content of accounts set out in the Charities (Accounts and Reports) Regulations 2008 other than any requirement that the accounts give a 'true and fair' view which is not a matter considered as part of an independent examination.

I have no concerns and have come across no other matters in connection with the examination to which attention should be drawn in this report in order to enable a proper understanding of the accounts to be reached.



Nigel Wyatt BSc FCA
Independent Examiner
125 Main Street
Garforth
Leeds
LS25 1AF

Date: 10/10/2025

Pudsey Community Project

Year Ended 31st December 2024

Statement of Financial Activities

		2024			2023
		Unrestricted Funds	Restricted Funds	Total Funds	Total Funds
	Note	£	£	£	£
Income					
Donations and legacies	2	52,321	141,725	194,046	262,147
Charitable activities		22,934	-	22,934	17,186
Other income		2,061	-	2,061	793
Total Income		<u>77,316</u>	<u>141,725</u>	<u>219,041</u>	<u>280,126</u>
Expenditure					
Expenditure on Charitable Activities	3	<u>118,354</u>	<u>155,741</u>	<u>274,095</u>	<u>167,646</u>
Total Expenditure		<u>118,354</u>	<u>155,741</u>	<u>274,095</u>	<u>167,646</u>
Net income / (expenditure)		<u>(41,038)</u>	<u>(14,016)</u>	<u>(55,054)</u>	<u>112,480</u>
Net income and net movement in funds					
Total funds brought forward	11	105,746	113,759	219,505	107,026
Transfers	11	<u>11,319</u>	<u>(11,319)</u>	<u>-</u>	<u>-</u>
Total funds carried forward	11	<u>76,027</u>	<u>88,424</u>	<u>164,451</u>	<u>219,505</u>

All income and expenditure derive from continuing activities.

The statement is a combined Statement of Financial Activities and Income and Expenditure Account for the purposes of meeting both companies act and charity SORP reporting requirements.

Pudsey Community Project

Year Ended 31st December 2024

Statement of Financial Position

	Note	2024 £	2023 £
Fixed assets			
Tangible Fixed Assets	8	12,581	4,702
Current assets			
Debtors	9	26,770	82,162
Cash at bank and in hand		126,691	133,700
		153,461	215,862
Creditors: amounts falling due within one year	10	1,592	1,058
Net current assets		151,869	214,804
Total assets less current liabilities		164,451	219,505
Net assets	12	164,451	219,505
Funds of the charity			
Restricted funds	11	88,424	113,759
Unrestricted funds	11		
Unrestricted General		68,477	95,746
Designated Funds		7,550	10,000
		76,027	105,746
Total charity funds		164,451	219,505

Directors Responsibilities

These financial statements were approved by the board of trustees and authorised for issue :

Name of Trustee: Emma Louise Douglas

Signed on behalf of the Trustees:



Date of Approval:

09/10/2025

Pudsey Community Project

Year Ended 31st December 2024

Notes to the Financial Statements

Basis of Preparation

The financial statements have been prepared in accordance with the Statement of Recommended Practice: Accounting and Reporting by Charities Financial Reporting Standards applicable in the UK and Republic of Ireland (Charities SORP 2019 FRS 102) and the Charities Act 2011.

Assessment of Going Concern

Preparation of the accounts is on a going concern basis. The trustees consider that there are no material uncertainties about the Charity's ability to continue as a going concern.

Fund Accounting

Unrestricted income funds comprise those funds which the trustees are free to use for any purpose in furtherance of the charitable objects. Unrestricted funds include designated funds where the trustees, at their discretion, have set aside resources for a specific

Restricted funds are funds which are to be used in accordance with specific restrictions imposed by the donor or the term of specific appeal, often known as a 'special offering' in the church.

Further explanation of the nature and purpose of each fund is included in the notes to the accounts.

Incoming Resources

All incoming resources are recognised once the charity has entitlement to the resources. It is probable that the resources will be received, and the monetary value of incoming resources can be measured with sufficient reliability.

- All donations to the project are included in full, with associated Gift Aid receivable in the Statement of Financial Activities.
- Grants, where entitlement is not conditional on the delivery of specific performance by the charity, are recognised when the charity becomes unconditionally entitled to the grant.
- Income resources from charitable trading activities such as the letting of the building are accounted for when invoices are drawn up (as the point of entitlement).
- Donated services and facilities are included at the value to the charity where this can be quantified.
- Gifts in Kind are accounted for at a reasonable estimate of their value to the charity or the amount actually realised.
- Volunteer time, the value of voluntary support for the work of the project is not included in the accounts but is described in the Trustees' annual report.
- Investment Income is included in the accounts when receivable.

Pudsey Community Project

Year Ended 31st December 2024

Notes to the Financial Statements

Resources Expended

Expenditure is recognised on an accrual basis as a liability is incurred. Liabilities are recognised where it is more likely than not that there is a legal or constructive obligation committing the charity to pay out the resources and the amount of the obligation can be measured with reasonable certainty.

Governance Costs

Include costs of the preparation and examination of statutory accounts, the costs of the trustees' meetings and the cost of any legal advice to trustees on governance or constitutional matters.

Liability Recognition

Liabilities are recognised as soon as there is a legal or constructive obligation committing the charity to pay out resources.

Loans Receivable

Loans made by the charity to partner organisations are initially recognised at the amount advanced, which is considered to be fair value. These loans are classified as basic financial instruments under FRS 102 and are subsequently measured at amortised cost, using the effective interest rate method, where applicable.

Where loans are made on interest-free terms or below-market interest rates, no discounting is applied if the impact is not material to the financial statements.

Tangible Fixed Assets

All assets costing more than £1000 are capitalised and at historic cost. Fixed assets are stated at cost less accumulated depreciation. Depreciation is charged on furniture and equipment which is written off on a straight-line basis over the estimated useful life of the asset.

Computer equipment	3 years straight-line
Furniture, fixtures and fittings	5 years straight-line

Pensions

The charity operates a defined contribution pension scheme. Contributions are charged to the Statement of Financial Activities as they become payable in accordance with the rules of the scheme.

Operating Leases

Rental charges payable under operating leases are charged on a straight-line basis over the terms of the lease.

Pudsey Community Project

Year Ended 31st December 2024

Notes to the Financial Statements

Taxation

The charity is exempt from tax on its charitable activities.

Judgements and Key Sources of Estimation Uncertainty

There have been no significant judgements (apart from those involving estimates) made in the process of preparing the financial statements. There have been no key assumptions concerning the future and other key sources of estimation uncertainty at the reporting date that have a significant risk of causing a material adjustment to the carrying amounts of assets and liabilities within the next financial year.

Pudsey Community Project

Year Ended 31st December 2024

Notes to the Financial Statements

2 Analysis of Income

	Unrestricted Funds £	Restricted Funds £	Total Funds 2024 £
Donations and Legacies			
Clothes	1,143	-	1,143
Donations	39,565	-	39,565
Gift aid	713	-	713
Gift in kind	1,200	-	1,200
Grants	9,700	141,725	151,425
	<u>52,321</u>	<u>141,725</u>	<u>194,046</u>
 Charitable Activities			
Charitable activities	10,254	-	10,254
Subscriptions	12,680	-	12,680
	<u>22,934</u>	<u>-</u>	<u>22,934</u>
 Other Income			
Interest	884	-	884
Room hire	950	-	950
Other income	227	-	227
	<u>2,061</u>	<u>-</u>	<u>2,061</u>
	<u>77,316</u>	<u>141,725</u>	<u>219,041</u>

Government Grant Income

Pudsey Community Project received £52,079 from Leeds City Council Household Support Fund as a Local Government Grant. The grant was to provide support to vulnerable households in most need of support to help with significantly rising living costs. The grant met immediate needs and helped those struggling to afford energy and water bills, food, and other related essentials. 15% of the grant was allocated to overhead costs. All grant conditions were fulfilled during the year.

Gift in Kind

Pudsey Community Project received roofing work and plastering work as a free service that we would normally have paid for.

Pudsey Community Project

Year Ended 31st December 2024

Notes to the Financial Statements

Analysis of Income cont.

	Unrestricted Funds £	Restricted Funds £	Total Funds 2023 £
Donations and Legacies			
Clothes	1,302	-	1,302
Donations	23,028	1,540	24,568
Gift aid	-	-	-
Grants	3,050	233,227	236,277
	<u>27,380</u>	<u>234,767</u>	<u>262,147</u>
 Charitable Activities			
Charitable activities	7,998	-	7,998
Subscriptions	9,188	-	9,188
	<u>17,186</u>	<u>-</u>	<u>17,186</u>
 Other Income			
Interest	239	-	239
Room hire	475	-	475
Other income	79	-	79
	<u>793</u>	<u>-</u>	<u>793</u>
	<u>45,359</u>	<u>234,767</u>	<u>280,126</u>

Pudsey Community Project

Year Ended 31st December 2024

Notes to the Financial Statements

3 Expenditure on Charitable Activities by Fund Type

	Unrestricted Funds	Restricted Funds	Total Funds 2024
	£	£	£
Administration costs	8,458	4,102	12,560
Art club	-	1,826	1,826
Building costs	10,825	10,910	21,735
Communication	547	265	812
Depreciation	3,439	-	3,439
Foodbank and pantry costs	2,123	31,730	33,853
Lunch club	565	3,127	3,692
Other activity running costs	752	-	752
Reduce Reuse	488	-	488
Repair café	570	-	570
Staff salaries	85,785	86,312	172,097
Staff and volunteer related costs	2,953	6,040	8,993
Welcome spaces	-	9,650	9,650
Winter wellbeing	-	999	999
Youth provision	1,849	780	2,629
	118,354	155,741	274,095

	Unrestricted Funds	Restricted Funds	Total Funds 2023
	£	£	£
Administration costs	9,233	-	9,233
Art club	-	-	-
Building costs	18,740	9,273	28,013
Communication	19	-	19
Depreciation	1,175	-	1,175
Foodbank and pantry costs	-	41,613	41,613
Lunch club	850	2,863	3,713
Other activity running costs	-	-	-
Reduce reuse	141	-	141
Repair café	-	-	-
Staff salaries	14,712	63,844	78,556
Staff and volunteer related costs	2,187	387	2,574
Welcome spaces	-	-	-
Winter wellbeing	-	-	-
Youth provision	2,249	360	2,609
	49,306	118,340	167,646

Pudsey Community Project

Year Ended 31st December 2024

Notes to the Financial Statements

4 Volunteers

The charity benefits greatly from the voluntary contributions of time and money by its members and regular attendees. Please refer to the trustee's report for further detail about volunteer contributions in the organisation.

5 Independent Examination Fees

	2024	2023
	£	£
Fees payable to the independent examiner for:		
Independent examination and preparation of the financial statements	1,500	900

6 Staff Costs

The total staff costs and employee benefits for the reporting period are analysed as follows:

	2024	2023
	£	£
Wages and salaries	159,227	77,269
Social security costs	8,464	-
Employer contributions to pension plans	4,406	1,287
	<u>172,097</u>	<u>78,556</u>

The average head count of employees during the year was as follows:

	2024	2023
Average Head Count	9	6

The number of employees that received employee benefits of more than £60,000 during the year was as follows:

	2024	2023
More than £60,000	-	-

Key Management Personnel

The charity considers that the Board of Trustees, the CEO and the Project Manager comprise as the Key Management Personnel of the charity in charge of directing and controlling, running and operating the charity on a day to day basis.

The total remuneration that was received by the key management personnel during the year was

	2024	2023
Key management personnel employee benefit	80,424	37,115

Pudsey Community Project

Year Ended 31st December 2024

Notes to the Financial Statements

7 Trustee Remuneration and Expenses

During the year no trustees received remuneration for their services to the charity or as employees.

During the year no trustees (2023: one trustee) incurred out-of-pocket expenses (2023: total expenses £16,528).

During the year the total aggregated donations made to the charity by the trustees was £180 (2023: £420).

8 Tangible Fixed Assets

	Fixtures and fittings £	Total £
Cost		
At 1 January 2024	5,877	5,877
Additions	11,319	11,319
At 31 December 2024	17,196	17,196
Depreciation		
At 1 January 2024	1,175	1,175
Charge for the year	3,439	3,439
At 31 December 2024	4,615	4,615
Net book value		
At 31 December 2024	12,581	12,581
At 1 January 2024	4,702	4,702

9 Debtors

	2024 £	2023 £
Accrued income	25,713	81,060
Prepayments	1,057	1,102
	26,770	82,162

10 Creditors

	2024 £	2023 £
Trade creditors	1,500	1,058
Accruals and deferred income	92	-
	1,592	1,058

Pudsey Community Project

Year Ended 31st December 2024

Notes to the Financial Statements

11 Analysis of Charitable Funds

	1 Jan 2024 £	Income £	Expenditure £	Transfers £	31 Dec 2024 £
Unrestricted Funds					
General	95,746	77,316	(115,904)	11,319	68,477
Designated Funds					
Building lease and purchase	10,000	-	(2,450)	-	7,550
Total Unrestricted	105,746	77,316	(118,354)	11,319	76,027
Restricted Funds					
100% Digital Leeds	-	1,000	(33)	-	967
Awards for all 2023	1,890	-	(1,890)	-	-
Building repairs and improvement	30,063	-	(7,464)	(1,319)	21,280
Community Organisations cost of living fund	38,189	-	(38,189)	-	-
Director salary	16,582	-	(16,582)	-	-
Groundwork community grant	-	20,000	(12,000)	-	8,000
Hedley Foundation	-	780	(780)	-	-
Household support fund	5,692	52,079	(35,944)	-	21,827
LCAN LCP Project	-	6,000	(6,000)	-	-
LCAN Listening exercise	-	1,750	(1,750)	-	-
LCF Stay well this winter	-	3,000	(3,000)	-	-
Lift installation	-	10,000	-	(10,000)	-
Lower hall trustees fund	10,000	-	-	-	10,000
Lunch club	561	1,816	(2,377)	-	-
McCarthy Christmas lunch clubs	-	750	(750)	-	-
Mentoring scheme	-	10,000	(6,000)	-	4,000
Mohn Westlake grant	4,216	-	(4,216)	-	-
OneStop grant	-	1,000	(1,000)	-	-
Scurrah Wainwright grant	-	4,000	(4,000)	-	-
Sir George Martin Trust fund	-	3,000	(3,000)	-	-
Swinnow Pantry set up	1,116	-	(1,116)	-	-
UKSPF Cost of Living Events	-	21,000	-	-	21,000
Welcome space coordination	5,450	5,550	(9,650)	-	1,350
Total Restricted	113,759	141,725	(155,741)	(11,319)	88,424
Total Funds	219,505	219,041	(274,095)	-	164,451

Pudsey Community Project

Year Ended 31st December 2024

Notes to the Financial Statements

Analysis of Charitable Funds Cont.

	1 Jan 2023 £	Income £	Expenditure £	Transfers £	31 Dec 2023 £
Unrestricted Funds					
General	105,777	45,359	(49,306)	(6,084)	95,746
Designated Funds					
Building lease and purchase	-	-	-	10,000	10,000
Total Unrestricted	105,777	45,359	(49,306)	3,916	105,746
Restricted Funds					
Awards for All 2023	-	9,950	(8,060)	-	1,890
Building repairs and improvements	-	32,640	(2,577)	-	30,063
Community Organisations cost of living fund	-	75,000	(36,811)	-	38,189
Director salary	-	16,956	(374)	-	16,582
Household support fund	-	53,800	(48,108)	-	5,692
Locality 2023	-	10,000	(10,000)	-	-
Lower hall trustees fund	-	10,000	-	-	10,000
Lunch Club	68	3,356	(2,863)	-	561
Mohn Westlake grant	-	4,216	-	-	4,216
Sainsbury's helping everyone eat better	-	3,000	(3,000)	-	-
Sir George Martin Trust fund	1,181	-	-	(1,181)	-
Swinnow Pantry set up	-	1,116	-	-	1,116
Volition 2023	-	750	(750)	-	-
Welcome Space coordination	-	5,450	-	-	5,450
WY Mayor youth activities 2023	-	7,668	(4,933)	(2,735)	-
Youth activities	-	865	(865)	-	-
Total Restricted	1,249	234,767	(118,340)	(3,916)	113,759
Total Funds	107,026	280,126	(167,646)	-	219,505

Pudsey Community Project

Year Ended 31st December 2024

Notes to the Financial Statements

Fund Transfers

2024

Lift installation

In 2024 a grant was awarded to install a lift for disabled access. The lift is held as an asset, once purchased the value has been transferred to the general fund while being depreciated.

Sir George Martin Trust fund

In 2024 this fund helped support the purchase of a dishwasher. The value of the asset has been transferred to the general fund as it is held in the general while being depreciated.

2023

Building repairs and improvements

Funds set aside for continuity of future building occupancy

Sir George Martin Trust fund

In 2023 this fund helped support the cost of a kitchen upgrade. The value of assets purchased by the fund have been transferred to the general fund as they are held in the general while being depreciated.

WY Mayor youth activities 2023

In 2023 this fund helped support the cost of a kitchen upgrade. The value of assets purchased by the fund have been transferred to the general fund as they are held in the general while being depreciated.

Fund Descriptions

Building lease and purchase

Funding set aside for continuity of future building occupancy

Restricted Funds

100% Digital Leeds

Grant given to embed digital inclusion across the charity's work

Awards for All 2023

Grant given for Reduce Reuse Kids' Clothes activities

Building repairs and improvements

Funding for development of the building for use

Community Organisations Cost of Living Fund

Grant funding from The National Lottery for all activities

Director salary

Funding for the Director's salary

Groundwork community grant

Grant given to support a project helping develop skills and employability for people far from employment

Hedley Foundation

Funds given towards food supplies for a cookery skills course for disadvantaged teens

Household Support Fund

Local council funding to provide support to vulnerable households in most need of support to help with significantly rising living costs. This funding was used to support the work of the Pudsey Community Pantry.

Pudsey Community Project

Year Ended 31st December 2024

Notes to the Financial Statements

LCAN LCP Project	Leeds Community Anchor Network gave funds to improve visibility and involvement of the third sector within West Leeds LCP and promote good partnership working, support of the Reduce Reuse Kids Clothes project.
LCAN Listening exercise	Leeds Community Anchor Network gave funds to support a City-wide Listening Exercise to hear from local communities about what's important to them.
LCF Stay well this winter	Leeds Community Foundation
Lift installation	Grant awarded for the installation of a disabled access lift
Locality 2023	Funding from Locality for signposting/ food work
Lower Hall Trustees Fund	Funding for the capital works to develop the building's Lower Hall for use.
Lunch Club	Grant funded by Public Health Leeds through Leeds Community Foundation to support the running of a warm space, providing hot drinks and company.
McCarthy Christmas lunch clubs	Grant given to support the cost of Christmas Meals
Mentoring scheme	Grant given to pioneer mentoring support for young people in year 6 and high school
Mohn Westlake grant	Grant given to provide children's and youth arts activities
OneStop grant	Grant given for the work of Pudsey Foodbank
Sainsbury's helping everyone eat better	Funding for food support activities
Scurrah Wainwright grant	Grant given to support Signposting work
Sir George Martin Trust	Grant given for the salary costs of the clothes coordinator role and upgrades to the kitchen facilities.
Swinnow Pantry set up	Grant given to buy equipment for the set up of Swinnow Pantry.
UKSPF Cost of Living Events	Grant to amplify the work of Reduce Reuse Kids' Clothes across the city of Leeds with 12 events in the 6 most deprived city wards
Volition 2023	Grant given for HEPA filters
Welcome Space coordination	Grant given by WYCA via VAL to coordinate and provide Welcome (Warm) Spaces for the area
WY Mayor youth activities fund	Grant given from Safer Communities fund for youthwork to prevent antisocial behaviour
Youth activities	Funding given for youth and children's work

Pudsey Community Project

Year Ended 31st December 2024

Notes to the Financial Statements

12 Analysis of Net Assets Between Funds

	Unrestricted Funds	Restricted Funds	Total Funds 2024
	£	£	£
Fixed assets	12,581	-	12,581
Current assets	65,037	88,424	153,461
Creditors less than 1 year	(1,592)	-	(1,592)
	<u>76,027</u>	<u>88,424</u>	<u>164,451</u>

	Unrestricted Funds	Restricted Funds	Total Funds 2023
	£	£	£
Fixed Assets	4,702	-	4,702
Current Assets	102,103	113,759	215,862
Creditors less than 1 year	(1,058)	-	(1,058)
	<u>105,746</u>	<u>113,759</u>	<u>219,505</u>

13 Related Party Transactions

During the year the charity has received £2,000 (2023: £44,640) from Pudsey Parish Church (Charity number 1134156). Pudsey Parish Church and Pudsey Community Project are related parties due to having mutual trustees: Chris Dunford-Kelk, and Louise Douglas.

Pudsey Community Project holds a lease agreement for the rent of the Pudsey Community Project Building at £500/ month rent. During the year £6,000 (2023: £10,000) was paid to Pudsey Parish church in rent. There were no outstanding balances at the end of the year.

Pudsey Parish Church was awarded part of the Welcome Space onward grants and received £750 for the church to create a welcome space.

14 Operating Lease

The total future minimum lease payments under non-cancellable operating leases are as follows:

	2024	2023
No later than 1 year	6,000	6,000
Later than 1 year but less than 5 years	24,000	24,000
Later than 5 years	82,000	88,000
	<u>112,000</u>	<u>118,000</u>

The operating lease is held for the charity's building premises.

Pudsey Community Project

Year Ended 31st December 2024

Notes to the Financial Statements

15 Prior Year Adjustment

Due to Pudsey Community Project increasing in income these accounts have been prepared in accordance with the Charities SORP guidelines. 2023 accounting figures have been adjusted to apply accrual accounting.

Statement of Financial Activities	2023	
	Original figures	2023 Restated figures
	Total Funds	Total Funds
Income	£	£
Donations and Legacies	185,695	262,147
Other Income	17,979	17,979
Total Income	<u>203,674</u>	<u>280,126</u>
Expenditure		
Expenditure on Charitable Activities	<u>177,000</u>	<u>167,646</u>
Total Expenditure	<u>177,000</u>	<u>167,646</u>
Net Income / (Expenditure)	<u>26,674</u>	<u>112,480</u>
Net Income and Net Movement in Funds		
Total funds brought forward	107,026	107,026
Transfers	-	-
Total Funds Carried Forward	<u>133,700</u>	<u>219,505</u>