

THE PORT MEN IN SHEDS

England & Wales · Charity number 1191097

Details

Status Registered

Legal form CIO

Registered 2020-09-01

Register [View on the Charity Commission register](#)

Contact

Address Overpool Community Centre
Rivacre Road
Ellesmere Port
CH66 1LL

Phone 07878 174312

Email Info@theportmeninsheds.org.uk

Website www.theportmeninsheds.org.uk

Activities

Objects: THE OBJECTS OF THE CIO ARE:3.1 TO PROMOTE SOCIAL INCLUSION FOR THE PUBLIC BENEFIT BY PREVENTING PEOPLE, PARTICULARLY BUT NOT EXCLUSIVELY MEN AGED 18 OR OVER WITHIN ELLESMERE PORT AND ITS SURROUNDING AREAS, FROM BECOMING SOCIALLY EXCLUDED, RELIEVING THE NEEDS OF THOSE PEOPLE WHO ARE SOCIALLY EXCLUDED AND ASSISTING THEM TO INTEGRATE INTO SOCIETY.FOR THE PURPOSE OF THIS CLAUSE 'SOCIALLY EXCLUDED' MEANS BEING EXCLUDED FROM SOCIETY, OR PARTS OF SOCIETY, AS A RESULT OF ONE OF MORE OF THE FOLLOWING FACTORS: UNEMPLOYMENT; RETIREMENT; FINANCIAL HARDSHIP; YOUTH OR OLD AGE; ILL HEALTH (PHYSICAL OR MENTAL); DISCRIMINATION ON THE GROUNDS OF SEX, RACE, DISABILITY, ETHNIC ORIGIN, RELIGION, BELIEF, CREED, SEXUAL ORIENTATION OR GENDER RE-ASSIGNMENT; POOR EDUCATIONAL OR SKILLS ATTAINMENT; RELATIONSHIP AND FAMILY BREAKDOWN; BEREAVEMENT; POOR HOUSING (THAT IS HOUSING THAT DOES NOT MEET BASIC HABITABLE STANDARDS.3.2 TO FURTHER OR BENEFIT THE RESIDENTS OF ELLESMERE PORT AND ITS SURROUNDING AREAS (PARTICULARLY BUT NOT EXCLUSIVELY MEN AGED 18 OR OVER) BY ASSOCIATING TOGETHER THE SAID RESIDENTS AND THE LOCAL AUTHORITIES, VOLUNTARY AND OTHER ORGANISATIONS IN A COMMON EFFORT TO ADVANCE EDUCATION AND TO PROVIDE FACILITIES IN THE INTERESTS OF SOCIAL WELFARE FOR RECREATION AND LEISURE TIME OCCUPATION WITH THE OBJECTIVE OF IMPROVING THE CONDITIONS OF LIFE FOR THE RESIDENTS.3.3 FOR THE PUBLIC BENEFIT TO PROMOTE LEARNING FOR PLEASURE BY PEOPLE NO LONGER IN FULL TIME EMPLOYMENT THROUGH THE CONTINUED DEVELOPMENT OF THEIR INDIVIDUAL CAPABILITIES, COMPETENCIES, SKILLS AND UNDERSTANDING IN SUBJECTS OF EDUCATIONAL VALUE.3.4 THE ADVANCEMENT OF ANY EXCLUSIVELY CHARITABLE PURPOSE ACCORDING TO THE LAW OF ENGLAND AND WALES THAT THE CHARITY TRUSTEES MAY IN THEIR ABSOLUTE DISCRETION DETERMINE FROM TIME TO TIME.

Activities: The Port Men in Sheds seeks to address and alleviate the damaging health and mental illness consequences brought about by social isolation in older men often brought about by retirement, ill health and bereavement. We achieve this objective by operating a large workshop and social facility in Ellesmere Port, Cheshire, where men can come together and socialise in a creative communal workshop space.

Classification

- **How:** Provides Buildings/facilities/open Space, Provides Advocacy/advice/information
- **What:** General Charitable Purposes, Education/training, Recreation
- **Who:** Elderly/old People, The General Public/mankind

Geography

- Cheshire West & Chester
- Wirral

Finances

Period end	Income	Expenditure	Assets	Employees
2025-03-31	£83,410	£58,869	-	-
2024-03-31	£54,520	£58,318	-	-
2023-03-31	£35,065	£28,488	-	-
2022-03-31	£22,154	£7,190	-	-
2021-03-31	£1,849	£22	-	-

Trustees

Name	Role	Appointed
David Edward Evans MBE		2025-04-02
David Watson		2023-06-09
Lawrence David Taylor		2024-08-01
Robin Golding		2023-06-15
Samantha Walker		2025-07-31

THE PORT MEN IN SHEDS

England & Wales - Charity number 1191097

Accounts



The Port Men in Sheds CIO Annual Report & Financial Statements April 2024 - March 2025





The Port Men in Sheds CIO

(Charity Reg: 1191097)

Registered under the laws England & Wales

Patron: Mr. Justin Madders MP

Annual Report

(1st April 2024 to 31st March 2025)

Registered Charity Address:

Overpool Community Centre
Rivacre Road
Ellesmere port
CH66 1LL



Foreword from the Trustees

A Year of Tremendous Change & Hard Work by All!

The annual report for 2023/4 concluded on a very positive note. Thanks to an asset transfer by Cheshire West & Chester Council, our charity moved into our new home in the Overpool Community Centre in January 2024.

We are indebted to Cheshire West & Chester Council as without these premises there would be no “Port Men in Sheds”. Thanks, must also go to the fantastic local charities such as Stanlaw Abbey who provided the much-needed funds to cover the major costs of our relocation.

So new home – new beginning!

As the Overpool site had not been in use for some time, there was much to do to make it fit for purpose. Broken windows, blocked drains and a particularly leaky roof were just a few of the challenges facing the group. Like always our members set about the work to clear the site of debris and detritus with great enthusiasm, ably assisted by tradesmen and volunteers from around the community. To all those who answered our call for help – thank you!

Special thanks must go to the National Lottery Community Fund, ASDA Welfare Fund, The Marjory Boddy Trust, and the Council Members whose generosity has enabled us to fund the repairs and work so we can build a solid foundation for the future. Without these, the task of fundraising the large sums needed for capital repairs on an aging building like this would have probably been beyond our reach.

There have been so many kind donations during the last 12 months from individuals and local businesses – too many to mention (but we have tried and there’s a list at the back!). There has also been a number of larger donations from B&Q (who supplied the units for our mess room and painted it), the Co-op, and Jay Teese (one of our members sons) who ran around Ellesmere Port carrying a log on his back, to name a few!

Our priority for the year ahead is to complete the capital building programme for the following areas:

- Roof replacement (4 of flat roofs) – thanks to the National Lottery
- Kitchen replacement – thanks to ASDA
- Accessible toilet and ramps – National Lottery
- Renovation of Community room storage – thanks to Cheshire West and Cheshire Council

We continue to forge links with the community and other charities and groups within the area to strengthen the community and provide much needed support where we can.



Lastly, we must also thank all our volunteers and our Administrator Gail, without whom this place wouldn't function. The members should be rightly proud of the space we have all managed to create and the benefit which this place brings to us all.

The Trustees
The Port Men in Sheds

The Year in Review

Having moved from our old home on the Rossmore Industrial Estate in January 24, a massive amount of work had been undertaken externally on the roof, gutters & drains to make the



building (almost!) watertight. Work to clear the surrounding overgrown shrubbery and other detritus was also completed by our members.

Internally we had progressed at pace too, with sufficient works completed so our shed was partly operational by the start of April 24. However, we still had three storage containers full of materials and redundant machinery!



The first major revision of the internal site layout started at the beginning of April. This involved removing the false ceiling in the larger of the two main rooms and installing a divider to create a separate Community room and a workshop area. Thanks must go to Kirke Johnstone for doing the massive amount of plastering involved.

The next major activity was to break through the structural wall between the two largest rooms to create a new entrance way and make good the brick and plasterwork (Dust – what Dust!). This was followed by a major piece of re-decoration.

As TPMIS had entered into a Community Benefit Agreement with Cheshire West and Chester Council when it acquired the building, we are required to make facilities available for local organisations as well as reaching out into the community.



The first major community use was as a polling station for the council elections in May 2024. It was in use again on 24 June 2024 for the general election.

Since creating the community space, it is now in regular use by our members for playing pool or darts as well as by our music group who meet twice a week on Mondays and Wednesdays for practice.

The local Police Community Services Officer (PCSO) and the local Ward Councillor also use our community room for monthly meetings and surgeries. In September 2024 a group of brownies visited the shed in order to gain their maker's badge.



Stellantis (Vauxhall Motors) have been longstanding supporter of the shed kindly donated several laptops for members to use for internet access and developing IT skills.

Other donations from the Majory Boddy & Let it Be charities have enabled us to equip the Community room with new chairs, a large Smart TV, Dart board and mat, Music system and monitors for the laptops.

TPMIS have been very lucky to secure a sizable grant from the National Lottery Community Fund and received the formal notification in July 24 that our bid for £141,980 had been approved. The grant comprises funding for capital works, the bulk of which is for re-roofing our building which was in a poor state of repair. Temporary repairs had been undertaken when we first took occupation to stem a number of serious leaks but it requires a full replacement to make permanent.



The remaining capital funds have been earmarked for converting the existing ladies toilet into a dual-purpose accessible one along with the installation of ramps and handrails to the building entrance. There's also provision for purchasing some replacement tools and machinery along with funds for transport & training.

Thanks to the generosity of one of our trustees, we have been able to purchase a state-of-the-art dust extraction system to protect our members from the harmful effects of dust in the machine shop.



This allowed us within a short period of time, to have the machine shop up and running so normal woodworking and lathe activities could be resumed.

Our shed has engaged in several community related activities ranging from fence painting for the local Royal British Legion in time for the 80th anniversary of D-Day to manufacturing and installing benches at a local park.

We supplied benches, hedgehog houses and bird boxes to a local primary school.



We were also delighted to assist a local Sensory support project by providing a chair built from old pallets.



Since moving to the Overpool site, a number of our members have focussed their efforts on creating suitable gardening space with a greenhouse and planting area. This is continuing to develop and those tomatoes should be ready soon!



In September we were delighted to hear that we had been awarded £10,500 by the ASDA Foundation to fund the replacement of our aging kitchen. This is thanks to the hard work of one of our trustees who prepared and submitted the application. Planning and design for the new kitchen is underway, and we hope to have it ready later in the year.



We would also like to thank the local ASDA community staff who helped paint our fencing on at least two occasions this year. ASDA have also been along to film our progress which was shown in ASDA stores across the country.

Just nine months after getting the keys to our new shed, we held an Open Day on the 5th October. The event was well attended by our neighbours, people from the local community as well by Justin Madders our local MP and patron. Justin has been a keen follower of our activities and, as always, on hand to offer his support.



Though the Open Day was not intended as a fund-raising event, we raised over £1,300 from the sale of tools, refreshments, plants and various items of craftwork.

We would also like to thank our local councillors who attended the Open Day. In terms of support, TPMIS are very grateful to Cheshire West and Chester Council who not only provide valuable support to our management team but have provided funding from their 'Members Budgets' to the tune of £2,350 to assist with the costs of removing asbestos from a storeroom, and funds for our garden. In addition, a further £3,800 has been provided by the council for replacing a number of other windows when the planned roofing work (being funded by the National Lottery) is completed later in the year.

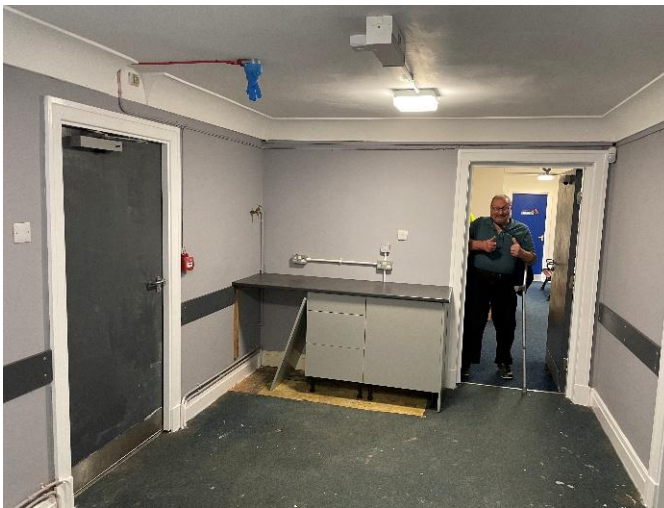
There is a perception that the men in sheds movement tends to focus just on woodworking activities which is understandable given that materials are easily sourced, and tools/machinery are readily available. However, TPMIS is very keen to diversify and amongst our members we are blessed by presence of an extremely skilled and experienced welder. Soon after moving to Overpool work began on fabricating a new set of gates to improve the security of our shed.



During the latter half of 2024 construction started on a metalwork shop built from donated scaffolding poles and metal sheeting. The metalwork shop is now fully operational and is attracting much interest from the men and the designated welding supervisor is keen to pass on some of his skills to others.

It's our Mess!

Much putting the world to rights is done in our members mess room which was looking a bit tired. Thanks to the efforts of staff from the local B & Q store who did the painting and a £1000 donation from them for cabinets, worktops and paint we now have a smart mess room. Thank you, B&Q.,



In terms of other generous donations, one of our members sons (Jay Teese) carried a log on his back around Ellesmere Port for a couple of days and raised £1836. The Co-op has made us one of their three local charities for the area and so far, we have received over £500 which is generated by people buying goods and using their Co-op membership card.



In November we were pleased to host a visit from the CHESTER'S Lord Mayor, Cllr Razia Daniels.

More recently we received a donation for £700 from a local choir (The Firefly's) which we have used to purchase a Gazebo for outdoor activities and events. Such donations, along with the many other kind gifts allows us to continue to develop and improve our facilities as well as provide equipment for our activities.



With funding from the National Lottery, we have been able to employ a part-time administrator who started in early December 24 on a 3-year term. Our administrator has proven to be a real winner and the role is seen as being critical to the success of TPMiS.

One of our Trustees is a keen artist (he says he lacks any woodworking skills, but we don't believe him), and a launch event for our art group was held in March. This created a great deal of interest and a number of members; some who have never engaged in any artistic pursuits have been inspired to paint and are now thoroughly enjoying the experience.



12 Month Financial Review

During the financial year the charity has had remarkable success in raising new funds and increasing membership numbers. This success is reflected in the annual accounts as follows:

- Total revenues from all sources were up from £54,520 to £83,410.
- Cash revenues and donations increased from £34,989 to £43,477 (This includes the first instalment of £12,230 of a 3-year lottery funding package totalling £141,980).
- Membership fees were stood at £16,200 up from £12,380 the previous year. (Members pay a monthly membership fee of £20/month).
- Cash in bank at year end stood at £24,340, an increase of £2,991 over the previous year.
- The charity's balance sheet was significantly strengthened at year end with total assets of £55,352 compared to the previous year total of £30,811.

The charity's strengthened financial position is a reflection of the determined effort of the charity's trustees, volunteers and members to actively promote the charity and mobilise local community involvement. The charity is extremely grateful to the many local organisations and individuals who supported us during the year, of note are:

- ASDA Foundation. Donated £10,660 enabling the full refurbishment of the Overpool Community Centre kitchen to modern hygienic standards. Once completed, the charity will be able to offer catering services to its members and the public.
- Marjory Boddy Trust. Donated £4,250 to help refurbish and equip our Community Room.
- Cheshire Freemasons. Donated £2,500 unrestricted cash funds.
- Let Yourself Trust. Donated £1,500 to help equip our Community Room.



- CW&C Council. Several local councillors donated a total of £2,350 in unrestricted funding for refurbishing our community room storage.
- ESSAR. Donated £1,000 in unrestricted cash funds.
- A remarkable personal fund-raising effort was made by Mr. Jay Tees which raised cash funds totalling £1,836.
- The charity was able to secure lottery funding over a 3-year period totalling £141,980. This will fund significant capital repairs required on the building fabric (particularly urgent roof repairs expected to cost in excess of £75,000) as well as providing funds to purchase capital equipment for the workshop. Significantly the funding is supporting the recruitment of a part-time charity administrator for a 3-year funding period.

The charity would also like to acknowledge the very many smaller personal donations, corporate donations and bereavement donations made by our local community and members.

As with any charity we are highly indebted to the many who gave their free time without financial reward. We would take this opportunity to thank our trustees, volunteers, members and the general public whose personal efforts and donation of their time and material donations have been gratefully received.

Cost Management:

The trustees take great care in the financial management of the charity, particularly the management of costs. Policies and procedures are in place to ensure good financial control and security of charity funds. These financial controls are ensured by:

- Formal written financial policies revised and approved by the trustees annually.
- The appointment of external Financial Verifiers/Auditors.
- Defined spending limits and approved individuals with specified financial authority. These are reviewed regularly.
- The maintenance of adequate *Financial Reserves*. The level of cash reserves held by the charity are reviewed regularly and adjusted dependent on financial outlook and expected expenditures.
- Monthly financial statements are prepared for review by the trustees.
- Moving forward, we are moving all our accounts onto an online accounts package which will further strengthen our financial controls whilst simplifying the operational overheads.

In summary:

The 2024/25 financial year has seen The Port Men in Sheds charity further consolidate its operational and financial position. The success of fund-raising efforts has far exceeded our expectations. The degree of local community involvement and support, both individual and corporate, and their associated positive financial impact has left the charity deeply grateful.

It is with every confidence the trustees can state that the charity remains very much a '*Going Concern*' with all critical operational and financial bench marks moving in a positive direction.



Governance & Management

The Port Men in Sheds charity is constituted as a 'Charitable Incorporated Organisation' (CIO), whose only voting members are its charity trustees (Foundation Model). It is registered under the charity laws of England and Wales; Registration No: 119097 dated 1st September 2020.

Trustees: The constitution of the charity does not specify a maximum number of trustees but does specify a minimum of 3 of which at least 2 must be registered members (beneficiaries) of the CIO. All trustees are appointed upon the unanimous resolution of the Board of Trustees.

Trustees are not paid for their services and may, when reasonable, claim back those expenses incurred whilst undertaking their duties as a trustee. All trustees (and indeed shed members) are required to sign the charity's 'Code of Conduct' policy which strictly forbids possible conflicts of interest or any associated personal gain obtained through their position as a trustee.

Trustee Movements during the reporting period:

Trustee	Date Appointed	Date Resigned	Comments
David Watson	09/06/2023		Trustee (charity member)
Dennis Foley	12/01/2023		Trustee (charity member)
George White	22/02/24*	25/02/2025	Trustee (charity member). *Reappointed on expiry of previous term.
Robin Golding	15/06/2023		Trustee + Community Relations (charity member).
Frank Hayes	25/02/2023*		Independent Trustee + Treasurer. * Reappointed on expiry of previous term.
Susan Cornick	26/04/2024	14/11/2024	Independent Trustee
Martin Gronow	1/08/2024		Trustee + Secretary (charity member).
David Taylor	1/08/2024		Trustee (charity member)

The Board of Trustees does not appoint a permanent Chairman. The position of Chairman is held on a rotational basis and is appointed at each and every trustee meeting by a vote of those trustees present. A quorum of 3 is established in order ratify Board decisions and to pass resolutions (except when required to appoint a new trustee).

Trustee candidates are identified through recommendation or by identifying candidates based on skills deemed necessary by the Board of Trustees. Trustees are appointed following interview by at least 2 trustees and following unanimous resolution of the Board of Trustees.



Diversity: The current Board of Trustees has identified that a greater degree of diversity of trustees on the current Board may prove beneficial – this will remain an objective of the Board of Trustees during the coming 12 months.

Current Trustees as of date of this annual report:

Trustee	Date Appointed	Date Resigned	Comments
David Watson	09/06/2023		Trustee. Charity member.
Dennis Foley	12/01/2023		Trustee. Charity member.
George White	22/02/24*	25/02/2025	Independent Trustee.
Robin Golding	15/06/2023		Trustee (Public Relations) Charity member.
Frank Hayes	25/02/2023*		Independent Trustee (Treasurer).
Martin Gronow	01/08/2024		Trustee (Secretary) Charity member.
David Taylor	01/08/2024		Trustee. Charity member.

Shed Steering Committee: The day-to-day operational management of the shed is under the control of a 6 man Shed Steering Committee elected by all charity members. Once elected, the committee sits for 18 months after which a new Steering Committee is elected.

The Shed Steering Committee has wide powers to manage the day to day operational matters and is also provided with an operational budget set and approved by the Board of Trustees.

Volunteers

No charity can be effective without the dedication and time given by its volunteers – The Port Men in Sheds is no exception. The vacating of our old premises and the relocation to the new placed a herculean burden on our volunteers and indeed, shed members generally, who all brought their skills and time to the task. Amongst its volunteer team and shed membership TPMiS is blessed with a wide range of trade skills and talent without whose input would add considerably to the operational running costs of the charity.

The Board of Trustees have appointed a total of 9 volunteers into formal positions of responsibility for which specialist training will have been provided when required.

Sadly, one of our long-term trustees George White stood down after 14 years due to ill health. The trustees would like to say a big thank you to George for all his efforts and wish him well for the future.

Happily, Dave Evans MBE will join us shortly as a trustee. Dave will be responsible for Health & Safety which is clearly a key issue for trustees and we are determined to ensure all our members are properly trained to use the equipment we have on site.



Summary

The reporting year of April 2024 – March 2025 has proven to be an outstanding year for TPMiS and news of our shed's success has spread far and wide. We continue to expand our membership that now stands in excess of 85 and we fulfil our commitment to Cheshire West and Chester to expand our role in the community. We have demonstrated that partnership working has guaranteed a future for our shed and we have been delighted with the support from the local community, local businesses and other charities such as the Freemasons, in Ellesmere Port and beyond. These have proven exemplar practice managing and promoting TPMiS.

The Board of Trustees would like to thank the following individuals and organisations who have been so supportive over the last twelve months and we hope will continue to support us in the years ahead: –

Justin Madders MP, elected members and officers from Cheshire West and Cheshire Council, The National Lottery Community Fund, Stellantis (Vauxhall Motors), The Co-op, ASDA Foundation, B&Q, Stanlaw Abbey, The Majorie Boddy Foundation, Let Yourself Trust, Cheshire Freemasons, Essar Oil, Thomas Tool Hire, the Firefly's Choir and Mr Jay Tees.

Signed for and on behalf of the Board of Trustees
The Port Men in Sheds

Martin Gronow
Trustee (Secretary).



The Port Men In Sheds CIO

(Charity Reg: 1191097)

Patron: Mr Justin Madders MP (Ellesmere Port & Neston)

Annual Accounts

(1st April 2024 to 31st March 2025)

Registered Office:

The Port Men in Sheds
Overpool Community Centre
Rivacre Road
Ellesmere Port
CH66 1LL



Declaration from the Board of Trustees:

The Trustees of The Port Men in Sheds declare that:

- All necessary information required to correctly prepare these accounts on a 'Cash Basis' (in accordance with Charities Commission (England & Wales) Statement of Recommended Practice (SORP; FRS 102, dated October 2019) has to the best of our knowledge been provided and retained for audit purposes.
- These financial statements have been prepared and approved with reference to the Charity's own approved 'Finance and Accounting Policy'.
- Financial Statements have been prepared on the basis of an 'Ongoing Concern'.

The Board of Trustees additionally confirms that these accounting statements consisting of:

- Statement of Financial Transactions
- Balance Sheet
- Additional Notes to Accounts


represent a *true and fair view* of the financial affairs of the charity 'The Port Men in Sheds, Reg: 1191097' for the period 1st April 2024 to 31st March 2025. For greater context it is strongly recommended that these financial statements be read in conjunction The Port Men in Shed's Annual Report for the same period.

Finally, as required by the Charities Act 2011 and the requirements of SORP:2019, the Trustees confirm that these financial statements have been subject to verification by the Charity's appointed *Independent Verifier*. A copy of the independent verifiers report is attached to the financial statements as Appendix 1.

Independent Verifiers: Lounds and Co.
Chartered Accountants
367 Chester Road
Little Sutton
CH66 3RQ

On this basis these financial statements, along with the Charity's Annual Report for the period 1st April 2024 to 31st March 2025, have been approved by the Board of Trustees by Board Resolution dated: 23rd October 2025

Signed for and on behalf of the Board of Trustees:


Date: 31/10/25
Mr. Frank Hayes
Trustee (Treasurer)


Date: 28th October 2025
Mr. Martin Gronow
Trustee (Secretary)



STATEMENT of FINANCIAL TRANSACTIONS (2024-25)

	Unrestricted Funds	Restricted Funds	Total Funds	Prior Year (Total)	Notes
<u>INCOME:</u>					
Donations & Grants:					
<i>Donations + grants:</i>	11,500	31,977	43,477	34,989	Note 10
Other trading activities:					
<i>Sale of donated goods:</i>	4,172		4,172		Note 11
<i>Donated assets:</i>	10,660		10,660		Note 12
Charitable activities:					
<i>Membership fees:</i>	16,200		16,200	12,380	Note 13
<i>Product sales:</i>	5,602		5,602	7,151	Note 14
<i>Misc:</i>	3,299		3,299		
Total Income:	51,433	31,977	83,410	54,520	
<u>EXPENDITURES:</u>					
Expenditure on raising funds:	-	-	-	-	
Expenditure on charitable activities:					
<i>Employment costs:</i>	-	4,645	4,645	-	Note 15
<i>Volunteer training</i>	801		801	-	
<i>Lease and Service costs:</i>	-		-	21,699	Note 16
<i>Utilities:</i>	6,385		6,385	6,398	Note:17
<i>Waste Disposal</i>	1,824		1,824	2,194	
<i>Bank charges</i>	5		5	10	
<i>Petty cash difference</i>	-		-	-	
<i>Insurance:</i>	2,273		2,273	368	
<i>Telecoms + Internet:</i>	1,492		1,492	658	
<i>Professional Fees</i>	4,528		4,528	1,065	
<i>Workshop consumables:</i>	4,507		4,507	1,922	
<i>Storage unit costs:</i>	2,530		2,530		Note 18
<i>Misc.</i>	2,736		2,736	5,689	
<i>Printing & Marketing:</i>	655		655		
<i>Stationary + Office:</i>	842		842	828	
<i>Expensed tools + equipment:</i>	521		521	1,219	Note 19
<i>Catering:</i>	1,751		1,751	751	
<i>Building maintenance:</i>	2,880		2,880	14,383	Note 20
<i>Building capital repairs:</i>	8,048	4,090	12,138		Note 21
<i>Transport:</i>	981		981	619	
Gains/(Losses) assets:					
<i>Tools, equipment, furnishings:</i>	-	-	-		
<i>Asset write-offs</i>	1,770		1,770	(372)	
<i>Depreciation:</i>	4,484	1,121	5,605	887	Note 22
Total Expenses:	49,013	9,856	58,869	58,318	
SURPLUS/(LOSS):	2,420	22,121	24,541	(3,798)	



BALANCE SHEET (Dated: 31st March 2025)

	<u>Funds</u> <u>(Unrestricted)</u>	<u>Funds</u> <u>(Restricted)</u>	<u>Total Funds</u>	<u>Prior Year</u> <u>(Total)</u>	<u>Notes</u>
Fixed Assets:					
<i>Tangible Assets:</i>	22,504	7,270	29,774	9,102	Note 22
Total Fixed Assets:	22,504	7,270	29,774	9,102	
Current Assets:					
<i>Cash in Bank:</i>	10,093	14,247	24,340	21,349	
<i>Petty Cash:</i>	634	-	634	360	
Total Current Assets:	10,727	14,247	24,974	21,709	
Liabilities:					
Creditors falling due in 12 months:	-	-	-	-	
Current Assets/(Liabilities):	-	604	604	-	Note 23
Net Current Assets/(Liabilities):	10,727	14,851	25,578	21,709	
TOTAL ASSETS/(LIABILITIES):	33,231	22,121	55,352	30,811	
Charity Funds:					
<i>Current Year Surplus:</i>					
<i>Unrestricted/restricted:</i>	2,420	22,121	24,541	(3,798)	
<i>Prior Year carryover:</i>	30,811	-	30,811	34,609	
TOTAL CHARITY FUNDS:	33,231	22,121	55,352	30,811	

Balance Sheet approved by resolution of The Board of Trustees dated: 23rd October 2025

Signed on behalf of the Board of Trustees:

Mr. Frank Hayes
Trustee (Treasurer)

Mr. Martin Gronow
Trustee (Secretary)



NOTES TO ACCOUNTS:

General:

1. These financial statements have been prepared on a '*Cash Basis*' in accordance with Statement of Recommended Practice (SORP) issued by the Charities Commission (England & Wales) dated October 2019 and further in accordance with FRS 102. The trustees confirm that there has been no material departure from these reporting standards. Due to the small size of the charity (and as allowed under SORP guidelines), no *statement of cashflows* has been made. Additionally, accounts prepared on an '*Activity Basis*' are also deemed superfluous.
2. These financial statements have been prepared in compliance with applicable charity law pertaining in the England and Wales.
3. **Going Concern:** The trustees report that the charity currently remains viable as a '*going concern*'. It has a proven record in its fund-raising capabilities (both internally and externally) and strong financial management controls and procedures. **Going Concern Uncertainties:** With the recent acquisition of premises on a 25-year lease at a peppercorn rent combined with self-generated income streams no material uncertainties are deemed to exist.
4. The charity 'The Port Men in Sheds' is a Public Benefit Entity.
5. **Key Assumptions:** In compiling these financial statements, the trustees have assumed that the charity's ongoing fund-raising capabilities will not be significantly constrained by the current overall economic climate of the country. During the year the Charity performed exceptionally well in its fund-raising efforts, and it is anticipated that this will remain the case as we move forward. As at the time of reporting, annual inflation shows a declining trend down to 2.7% as compared to 4.7% in the previous year. To help mitigate the risk of significant asset impairment the trustees attempt to maintain a £10,000 contingency reserve (currently £7,000 at year end) and are taking actions to increase self-sustainability of the charity's operations through increased internally generated income.
6. **Role of Volunteers:** As a charity *The Port Men in Sheds* (TPMiS) is highly dependent on the roles of volunteers. The charity currently has 1 part time employed administrator (20hrs./week). During the reporting period the charity had a total of 11 active volunteers and 5 Trustees – without the unpaid support of these volunteers/trustees the Charity would be unable to operate.
7. **Disclosure of Trustees' Remuneration or Benefits:** During the reporting period no remuneration or benefits in kind were paid to Trustees and no related party agreements were entered into. In addition, no expenses other than those required to reimburse expenditures incurred by trustees for the purchase of charity assets/consumables were paid to any Trustee during the reporting period.
8. **Auditor and Financial Service Fees:** During this accounting period accounting fees amounting to £612 have been paid for financial accounts verification.



9. **Policy on Valuation of Donated Goods and Services:** The Charity benefits substantially from the regular donation of goods and services and as such, when appropriate, such goods and services are recognised as income on the *Statement of Financial Transactions*. The policy for the valuation of such goods and services is contained in the Charity's '*Financial and Accounting Policy*' but may be summarised as follows:

Donated Services and use of Assets: Donated services and asset usage are valued at the likely cost of purchasing such services/asset usage directly from the commercial market on a like for like basis.

Donated Goods (not for resale): Are valued at the likely resale benefit to the Charity. Whilst this may require a degree of subjectivity, a conservative approach to such valuations is used to establish a fair value. After valuation donated assets are placed on the asset register.

Notes to SoFT

10. During the year the charity has benefitted greatly through the support of the local community, Cheshire West & Chester Council and many local enterprises. Significant material donations were received from ASDA (£10,500), Majory Boddy Trust (£4,250), Cheshire Freemasons (2,500), Let Yourself Trust (£1,500), ESSAR Oil (£1,000), CW&C Council (£2,350). The charity was also in receipt of the first instalment of £12,230 of a 3-year Lottery Community Fund award totalling £141,980. This award primarily supports urgent capital repairs and improvements to our recently acquired Overpool Community Centre fabric plus the cost of employing a part-time charity administrator (20hrs./week). A significant personal donation of £1,836 was received from Mr. Jess Teese.
11. The charity held two 'garage sale' days to raise funds from donated garage clearance activities.
12. The charity brought onto its asset register donated items of material use in the charity's activities.
13. Membership fees of £20 monthly are charged to access charity services.
14. In an effort to increase self-sufficiency the charity is seeking to increase revenues through the sale of shed made products/services and the taking on of small commissions. Moving forward it is expected that shed sales will continue to grow.
15. As a result of securing a 3-year funding grant from the National Lottery Community Fund it has been possible to recruit a part-time charity administrator (20hrs.week). Our administrator commenced employment 2nd December 2024.
16. **Lease & Service Costs:** From 4th January 2024 the charity has acquired premises under a 25-year lease at an annual peppercorn rent of £1.00/annum. In return the charity has assumed responsibility for the capital repair and maintenance of the building.
17. **Utility costs:** Energy costs remained flat compared to the previous year. Ongoing improvements in energy efficiency measures, including a major roof refurbishment



inclusive of the installation of roof insulation to current building standards, will have a positive impact into the next financial year.

18. Unavoidable temporary storage costs were incurred throughout the year as a result of relocation activities to the Overpool Community Centre. At year end all temporary storage contracts had ceased.
19. In accordance with the charity's revised 'Finance and Accounting Policy' all tools, equipment and assets costing less than £50 will be fully expensed in the accounting period. Tools/Equipment/Assets above £50 will be assigned to the asset register.
20. **Building maintenance costs:** Under the terms of our lease the charity remains responsible for all routine building and grounds maintenance.
21. **Building Capital Costs:** Under the terms of our lease the charity remains responsible for all capital repair activities. Throughout the year, and throughout the coming year, these activities will remain substantial. The charity has however, secured substantial secured funding to perform essential capital repairs/improvements totalling £95,280 during the 2024-25 and 2025-26 financial years.

Notes to the Balance Sheet

22. **Assets & Depreciation:**

Currently the charity does not have assets on its asset register for which the need for revaluation exists.

The Charity maintains a 'Register of Assets'. Capital items purchased at <£50 are immediately expensed whilst those above >£50 are capitalised. Due to the large number of small capital workshop tool items these may be 'pooled' into a 'Small Tool Asset Fund'. Whilst large equipment and machinery purchases/donations (generally >£100) may be listed separately on the Asset Register.

- 23 HMRC credit resulting from overpayment.

Assets/Depreciation

	Machinery Equipment	Tools & Equipment	Fixtures and Fittings	Electrical & Computers	Total
Cost or Valuation:					
<i>Carryover as at 01/04/2024:</i>	3,141	4,490	1,301	170	9,102
<i>Prior year correction</i>	39	12	16	21	88
<i>Prior year asset sale correction:</i>		(372)			(372)
<i>Additions:</i>	6,000	5,847	9,890	6,311	28,048
<i>Disposals:</i>	(407)	-	(888)	(191)	(1,486)
<i>Transfers:</i>	-	-			-
As at 31/03/2025	8,773	9,977	10,319	6,311	35,380
Depreciation:					
<i>For reporting period:</i>					
<i>Depreciation rate:</i>	15%	20%	10%	20%	
<i>Value at 31/03/2025</i>	8,773	9,976	10,319	6,331	35,379
<i>Depreciation for period</i>	1,316	1,995	1,032	1,262	5,605



<i>Impairments:</i>	-	-	-	-	-
<i>Transfers:</i>	-	-	-	-	-
<i>Net value as at 31/03/25:</i>	7,457	7,981	9,287	5,049	29,774



Appendix 1

The Port Men in Sheds Financial Accounts for the Year to 31 March 2025

Independent verification

Testing was carried out on a sample of transactions from the Income and Expenditure Accounts. The transactions were either agreed back to the source documents or to the bank statements.

The opening and closing bank balances per the Accounts agreed back to the actual Bank Account Statements.

Petty cash summaries were checked.

Findings

I can confirm that the testing identified no material differences between the source documents and the Accounts.

As always with these type of businesses, it is impossible to confirm with 100% assurance that all of the income generated at events was paid into the business' bank account as there are no sales invoices generated for each and every transaction. Although, this has started to improve and more paperwork has been kept this year.

Recommendations

- 1 -Sales invoice/receipts written for each sale made to help verify the completeness of income.
- 2 -Monthly review process to be implemented – bank analysis spreadsheet to be reviewed, agreed to bank statement, signed and counter signed with dates.

Sign off

I can confirm that the information contained in the Accounts for the year to 31 March 2025 are in line with the underlying transactions and that they fairly represent the data that is available to review.

Signature:  _____ Date:

Name: Paul Lounds, FCA

THE PORT MEN IN SHEDS

England & Wales - Charity number 1191097

Accounts



The Port Men in Sheds CIO Annual Report & Financial Statements April 2023 – March 2024





The Port Men in Sheds CIO

(Charity Reg: 1191097)

Registered under the laws England & Wales

Patron: Mr. Justin Madders MP

Annual Report

(1st April 2023 to 31st March 2024)

Registered Charity Address:

Overpool Community Centre
Rivacre Road
Ellesmere port
CH66 1LL

Foreword from the Trustees

A Challenging Start but Tremendous End to the Year!

Having started the year with great uncertainty surrounding the long-term availability of suitable and affordable premises; the year ended with the successful acquisition of new premises on a



The Overpool Community Centre – Home of The Port Men in Sheds.

secure long-term affordable lease. The acquisition of the Overpool Community Centre (OCC) on a secure 25 year lease at a peppercorn rent has been, and will be, transformative for our charity. It has removed great uncertainty under which The Port Men in Sheds CIO have operated over the previous 2 years.

The acquisition was made under Cheshire West & Chester Council's 'Community Asset Transfer Programme' and was the result of the tremendous effort both by the charity and the considerable support of CW&C Council's Community Asset Team. A particular thanks

must be expressed to the team at CW&C's Communities & Engagement (Ellesmere Port) lead by Alison Armstrong and Kathryn Jones, Snr Corporate Property Asset Manager, without whose significant support the acquisition would not have succeeded. *Thank You.*

Again, the year was marked by the overwhelming extent and depth of local community support - both by organisations and individuals – far too numerous to mention individually. A particular mention must, however, be made of the *Stanlaw Abbey Development Trust** whose substantial and critical financial guarantees underpinned our Overpool Community Centre bid and acquisition - *Thank you.*

To all those in our local community - tradesmen, organisations and individuals who responded to our very own 'SOS call' to help in the restoration and refurbishment of the of the run-down Overpool Community Centre - all at TPMiS say *Thank you.*



The Port Men in Sheds ends the year with a strong wind in our sails. We face the future with the comfort of secure new long-term premises secured at a peppercorn rent. The charity's finances



remain on a strong secure footing. Our membership levels are increasing and we move forward with great ambition.

Our immediate priorities for 2024 -2025 are to continue with the Overpool Community Centre building refurbishment programme (inclusive of full roof replacement) whilst at the same time deepening our relationships with other community groups in the Ellesmere Port area.

Further, we plan to maximise the use of the Overpool Community Centre by making available our premises on a 7 day basis inclusive of evenings to other local community groups and expanding the range of activities offered by TPMiS.

No charity can exist without the dedication of its volunteers and those members who so freely allocate their time to the needs of the charity. At The Port Men in Sheds our team of volunteers and members have this year excelled in their efforts to successfully relocate to our new premises and make the Overpool Community Centre habitable. A sterling effort. *Thank you.*

Finally, but not least, the Trustees would like to thank our Patron – Mr Justin Madders MP (Ellesmere Port & Bromborough) for his continued support of the Board of Trustees and the work that The Port Men in Sheds does. *Thank you.*

The Trustees
The Port Men in Sheds

* *The Stanlaw Abbey Development Trust* is a local charity which supports local community charitable initiatives.

Our Raison D'etre: People and Community

Men in Sheds has been a part of the Ellesmere Port community for over 15 years – initially under the management of Age (UK) Cheshire and since 1st September 2020 as an independently registered charity The Port Men in Sheds CIO (TPMiS).

Our *raison d'etre* is to provide a vital community space for older men who are generally, but not exclusively, over 65 and in retirement. This demographic is particularly susceptible to loneliness and isolation through retirement and bereavement the effects of which can compound into poor health outcomes and strain on local health and social services. Our experience however, conclusively demonstrates that these issues are faced by men generally



- irrespective of age and as a result TPMiS is increasingly working with social prescribers and other local organisations to support men of all ages who would benefit from the welcoming community at our shed. Indeed, we are also engaged with special needs groups and local schools and work with boys who may benefit from interaction with TPMiS.



TPMiS offers a workshop and social space within which men can engage in the craft skills of woodwork, welding, furniture recycling, guitar making, community projects. Activities have expanded to include a music interest group. We currently look forward to expanding these activities further to include an art group, gardening group or any other activities that our members themselves wish to promote. Other members simply come to socialise and engage in

banter over a cup of tea and biscuit.

TPMiS is a fully inclusive organisation – All are welcome.

The Board of Trustees are keen to ensure that our members and service users themselves, as far as is practical, manage and run the charity. This is achieved through the 6 man *Shed Steering Committee* – a membership elected body responsible for the day to day operation of the shed and its activities.

The recent acquisition of the Overpool Community Centre provides a secure long-term home for TPMiS from which the charity hopes to further expand its charitable objectives better serving our local community of Ellesmere port.

Community Initiatives



The year saw the appointment of a 'Community Lead' who's primary objective was to increase the visibility of our charity within the local community and establish mutually beneficial relationships with other voluntary organisations, local social prescribers and schools. This initiative is proving successful.

Some examples of our support and collaboration are:

- Support of the Tarporley War Memorial Hospital by repairing, refurbishing and making planters, benches and bird tables for a garden area to be used by patients.
 - We have reached out to those in the community with special needs and along with their carers they have become valued members of our shed community.
 - A member with limited vision, enjoys visiting the shed to take part in the music sessions.
- Shed members also support new members who have Downs Syndrome and cognitive issues. These men have thoroughly enjoyed making items and also the companionship of the shed community.
 - TPMiS has been able to support three pupils from a local High School who are following an individual timetable. These young men have been a great addition to the shed and this example of intergenerational work is something we will develop further as we move forward.
 - Shed members have also supported members of the community by tidying and clearing gardens for disabled members of the community, carrying out small maintenance jobs on properties owned by elderly or infirm people and repairing and restoring sentimental items owned by members of the public.
 - Our members have also made or repaired items for local schools, hospitals, churches and care homes.



The Year In Review

The priorities facing the charity as it entered the 2023-2024 year were:

- 1) Secure new affordable premises before the end of the current emergency lease period ending 29th February 2024.
- 2) To continue supporting our membership and others in our community through our workshop facilities and by expanding our community projects and engagement.
- 3) Increase membership levels – still below pre-covid levels.
- 4) Maintain financial stability.

Workshop Premises:

Without doubt the question of acquiring suitable long-term premises at an affordable rent was the single biggest issue facing the charity. At the start of the reporting year TPMiS was operating under an emergency 12 month lease due to expire on 29th February 2024 – some 11 months distant. At some £21,942 annually, the cost of this lease was beyond the long-term affordability of the charity.

In early 2023 the trustees entered into a formal competitive tendering process to acquire the then 3-year vacant Overpool Community Centre available under Cheshire West & Chester's 'Community Asset Transfer Programme'. These premises were considered excellent for both the current and future requirements of TPMiS, offering both workshop space and a community space for additional activities and community engagement.

Following a long and determined effort the premises were offered to TPMiS on a 25 year secure lease at a peppercorn annual rent of £1.00 with an additional condition that TPMiS assume all responsibility for the capital maintenance of the building and its grounds. Given that the building had lain empty for 3 years potential capital repairs were significant – particularly the need to conduct emergency roof repairs.

With the generous financial support of Stanlaw Abbey Development Trust, a local charity supporting the local community of Ellesmere Port, the trustees felt confident in committing to the 25-year lease along with its attendant liabilities and as such TPMiS signed the lease agreement commencing 4th January 2024.



OCC - Much work to do!

It is required at this point that full gratitude be expressed to those within CW&C Council namely; the Communities & Engagement (Ellesmere Port) team lead by Alison Armstrong and Kathryn Jones, CW&C Snr. Corporate Property Asset Manager, without whose support and guidance contributed so much to this successful acquisition.



Internal water damage

Further, with the departure from our old premises at Unit 25, Rossmore Industrial Estate, it would be remiss not to thank all at Age (UK) Cheshire, and in particular its CEO Dale Maskell, whose assistance and critical support during this transition year proved essential.

Upon acquisition of the OCC work commenced immediately on necessary emergency repairs to the main building fabric, in particular the leaking roof and the clearance of the badly overgrown grounds. The charity launched its own community 'SOS' to which the local community responded overwhelmingly. Much support was given, not only financially but in the provision of essential trade and professional services. With such support, by March 2024 TPMiS had once again opened its doors and was serving its members and local community.

Overpool Community Centre – Home to The Port Men in Sheds. The future is bright!

In tandem with the Overpool lease acquisition an additional *Community Benefits Agreement* was signed with CW&C Council aimed at maximising the potential community benefits from this important local community asset. In short, TPMiS has agreed, where possible, to extend our services to achieve greater reach into the community. This entails extending the opening hours of the OCC to evenings and weekends and working more closely with other community groups and organisations. This process is in hand and our charity is very much listening to ideas and suggestions to develop into 2025. Initiatives currently under consideration are:



- Young shedders – a programme of woodwork shop and craft activities aimed at school age children to be held over weekends and school holidays.
- Rental of a community room at small cost to other charitable organisations wishing a hire meeting space or conduct their activities. Tea/coffee mornings.
- Further develop our own TPMiS activities to incorporate model making and other craft hobbies.



- Further engage in creative community related projects. Much satisfaction is achieved by our members when engaged in community projects. The shed regularly makes planters and public benches for community spaces. Our music group has played in care homes for the elderly.

During the year a significant effort was made through social media channels to boost the public profile of

TPMiS. To this end a dedicated trustee was assigned to this task and the results have been quite remarkable. Our membership continues to steadily increase and the number of positive community interactions have increased significantly.

12 month Financial Review

During the financial year the charity had to significantly drawdown on its £20,000 financial reserve and a low of £8,857 was reached in June 2023. This was primarily as a result of having to sign an emergency 13 month lease in February 2023 at a significantly higher rent of £21,942/year plus service charges of £2,076/year. Additionally, these payments had to be paid fully in advance from our financial reserves. Despite this the charity's finances bounced slowly back such that at the 31st March 2024 year-end our current bank balance stood at £21,349. Thanks needs to be expressed to the many charity members whose efforts to raise additional funds proved essential and successful

Income: Total income for the year amounted to £54,520 primarily through a substantial fund raising effort which saw grants and donations totalling £34,989. Membership fees continued to provide a secure income source amounting to £12,380 whilst internally generated product sales amounted to £7,151.



Community support in action. ASDA workers giving a helping hand on volunteer's day.

Yet again the charity has shown itself adept at raising funds both internally and externally – this through difficult financial times for many in our community. The trustees would like to thank all those - organisations, individuals and the shed members alike for their most needed financial support during the year.



Costs & Expenditures: Total expenditures for the financial year amounted to £58,318 resulting in a small negative surplus of £3,798 for the year. As mentioned previously, this can be mainly attributed to rapidly rising rental costs of £21,669 and high inflation across all cost centres during 2023-2024.

Balance Sheet: The balance sheet for the year remains substantially unchanged with a minor decrease in total charity funds from £34,609 to £30,811. Net Current Assets remained strong with only a minor reduction from £24,620 to £21,709.

A Financial Transformation: Looking toward the next financial year note must be made of the financial transformation brought about by the acquisition of the Overpool Community Centre. This newly signed 25 year lease is at a peppercorn rent of £1.00/year. This represents an annual saving in rental terms of over £22,000/year! Indeed, looking forward all of the charity's future operating costs will be covered by the charity's own internal funding arrangements through membership fees and product sales. Essential capital repair obligations to the OCC building structure will however, place a burden on the charity throughout the next financial year. To this end the trustees are actively engaged in fund raising applications and are hopeful of securing a Lottery Community Fund grant in the next financial year.



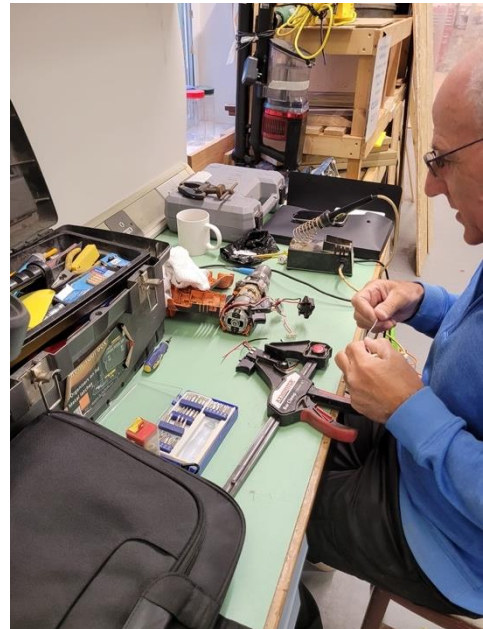
It is with some satisfaction that despite a difficult and uncertain year the trustees are able to report a strong and stable charity balance sheet and strong revenue performance. We are confident that the charity moves forward into the next financial year very much as a *'going concern'*.

Auditors: We are pleased to confirm that Lounds & Co Chartered Accountants, 367 Chester Road, Little Sutton, Ellesmere Port, CH66 3RQ have been appointed by the Board of Trustees as our accountants.

Governance & Management

The Port Men in Sheds charity is constituted as a ‘Charitable Incorporated Organisation’ (CIO), whose only voting members are its charity trustees (Foundation Model). It is registered under the charity laws of England and Wales; Registration No: 119097 dated 1st September 2020.

Trustees: The constitution of the charity does not specify a maximum number of trustees but does specify a minimum of 3 of which at least 2 must be registered members (beneficiaries) of the CIO. All trustees are appointed upon the unanimous resolution of the Board of Trustees.



Trustees are not paid for their services and may, when reasonable, claim back those expenses incurred whilst undertaking their duties as a trustee. All trustees (and indeed shed members) are required to sign the charity’s ‘Code of Conduct’ policy which strictly forbids possible conflicts of interest or any associated personal gain obtained through their position as a trustee.

Trustee Movements during the reporting period:

Trustee	Date Appointed	Date Resigned	Comments
David Watson	09/06/2023		Trustee (Treasurer)
Dennis Foley	12/01/2023		Trustee (charity member)
George White	22/02/24*		Trustee (charity member). *Reappointed on expiry of previous term.
Robin Golding	15/06/2023		Trustee (Public Relations) Charity member..
Frank Hayes	25/02/2023*		Independent Trustee (Secretary). * Reappointed on expiry of previous term.
Steve Morris		30/01/2024	Independent Trustee

The Board of Trustees does not appoint a permanent Chairman. The position of Chairman is held on a rotational basis and is appointed at each and every trustee meeting by a vote of those



trustees present. A quorum of 3 is established in order ratify Board decisions and to pass resolutions (except when required to appoint a new trustee).

Trustee candidates are identified through recommendation or by identifying candidates on the basis of particular skills deemed necessary by the Board of Trustees. Trustees are appointed following interview by at least 2 trustees and following unanimous resolution of the Board of Trustees.

Diversity: The current Board of Trustees has identified that a greater degree of diversity of trustees on the current Board may prove beneficial – this will remain an objective of the Board of Trustees during the coming 12 months.

Current Trustees as of date of this annual report:

Trustee	Date Appointed	Date Resigned	Comments
David Watson	09/06/2023		Trustee. Charity member.
Dennis Foley	12/01/2023		Trustee. Charity member.
George White	22/02/24*		Independent Trustee.
Robin Golding	15/06/2023		Trustee (Public Relations) Charity member.
Frank Hayes	25/02/2023*		Independent Trustee (Treasurer).
Susan Cornick	26/04/2024		Independent Trustee
Martin Gronow	01/08/2024		Trustee (Secretary) Charity member.
Lawrence David Taylor	01/08/2024		Trustee. Charity member.

Shed Steering Committee: The day to day operational management of the shed is under the control of a 6 man *Shed Steering Committee* elected by all charity members. Once elected the committee sits for 18 months after which a new Steering Committee is elected.

The Shed Steering Committee has wide powers to manage the day to day operational matters and is also provided with an operational budget set and approved by the Board of Trustees.

Volunteers

No charity can be effective without the dedication and time given by its volunteers – The Port Men in Sheds is no exception. The vacating of our old premises and the relocation to the



new placed a herculean burden on our volunteers and indeed, shed members generally, who all brought their skills and time to the task. Amongst its volunteer team and shed membership TPMiS is blessed with a wide range of trade skills and talent without whose input would add considerably to the operational running costs of the charity.

The Board of Trustees have appointed a total of 9 volunteers into formal positions of responsibility for which specialist training will have been provided when required.

Summary:

The year has seen a tremendous turnaround in the long-term fortunes of the charity. The positive impact of the Overpool Community Centre acquisition cannot be under estimated – both in financial as well as operational terms.

Although the need to make significant capital repairs to the OCC building structure exists this process has already started and the trustees are confident that with the continued support of our members and our local community, we will succeed in completing what needs to be done.

The charity and its trustees look forward to the coming year with great enthusiasm. We anticipate a continued growth in our membership numbers whilst simultaneously working closer with other local community groups and organisations. The utilisation of the OCC premises to both evenings and weekend hours provides great opportunity to maximise our positive impact within the local Ellesmere Port Community.



It remains our ambition that the Port Men in Sheds will never turn away any person in need of our services and shed community.

Signed for and on behalf of the Board of Trustees
The Port Men in Sheds

Handwritten signature of Martin Gronow

Martin Gronow
Trustee (Secretary).



The Port Men In Sheds CIO

(Charity Reg: 1191097)

Patron: Mr Justin Madders MP (Ellesmere Port & Neston)

Annual Accounts (Verified)

(1st April 2023 to 31st March 2024)

Registered Office:

The Port Men in Sheds
Overpool Community Centre
Rivacre Road
Ellesmere Port
CH66 1LL

Declaration from the Board of Trustees:

The Trustees of The Port Men in Sheds declare that:

- All necessary information required to correctly prepare these accounts on a '*Cash Basis*' (in accordance with Charities Commission (England & Wales) Statement of Recommended Practice (SORP; FRS 102, dated October 2019) has to the best of our knowledge been provided and retained for audit purposes.
- These financial statements have been prepared and approved with reference to the Charity's own approved '*Finance and Accounting Policy*'.
- Financial Statements have been prepared on the basis of an '*Ongoing Concern*'.

The Board of Trustees additionally confirms that these accounting statements consisting of:

- Statement of Financial Transactions
- Balance Sheet
- Additional Notes to Accounts

represent a *true and fair view* of the financial affairs of the charity 'The Port Men in Sheds, Reg: 1191097' for the period 1st April 2023 to 31st March 2024. For greater context it is strongly recommended that these financial statements be read in conjunction The Port Men in Shed's Annual Report for the same period.

Finally, as required by the Charities Act 2011 and the requirements of SORP:2019, the Trustees confirm that these financial statements have been subject to verification by the Charity's appointed *Independent Verifier*. A copy of the independent verifiers report is attached to the financial statements as Appendix 1.

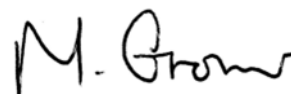
On this basis these financial statements, along with the Charity's Annual Report for the period 1st April 2023 to 31st March 2024', have been approved by the Board of Trustees by Board Resolution dated: 13th January 2025

Signed for and on behalf of the Board of Trustees:

Frank Hayes

Date: 14th Jan 2025

Frank Hayes
Trustee (Treasurer)



Date: 14th Jan 2025

Mr. Martin Gronow
Trustee (Secretary)

STATEMENT of FINANCIAL TRANSACTIONS

	Unrestricted Funds	Restricted Funds	Total Funds	Prior Year (Total)	Notes
INCOME:					
Donations & Grants:					
<i>Donations + grants</i>	34,989		34,989	23,154	Note 10
Charitable Activities:					
<i>Membership fees:</i>	12,380		12,380	9,950	Note 11
<i>Product sales:</i>	7,151		7,151	2,322	Note 12
Total Income:	54,520		54,520	35,065	
EXPENDITURES:					
Expenditure on raising funds:	-	-	-	-	
Expenditure on charitable activities:					
<i>Lease and Service costs:</i>	21,699		21,699	15,507	Note 13
<i>Utilities:</i>	6,398		6,398	8,592	Note:14
<i>Waste Disposal</i>	2,194		2,194	-	
<i>Bank charges</i>	10		10	2	
<i>Petty cash difference</i>	-		-	359	
<i>Insurance:</i>	368		368	388	
<i>Telecoms + Internet:</i>	658		658	261	
<i>Professional Fees</i>	1,065		1,065	-	
<i>Workshop consumables:</i>	1,922		1,922	905	
<i>Misc.</i>	5,689		5,689	1,117	
<i>Stationary + Office:</i>	828		828	66	
<i>Expensed tools + equipment:</i>	1,219		1,219	218	Note 15
<i>Catering:</i>	751		751	144	
<i>Building maintenance:</i>	14,383		14,383	-	Note 16
<i>Transport:</i>	619		619	42	
Gains/(Losses) assets:					
<i>Asset disposals</i>	(372)		(372)	-	
<i>Depreciation:</i>	887		887	887	Note 17
Total Expenses:	58,318		58,318	28,488	
SURPLUS/LOSS:	(3,798)		(3,798)	6,577	

BALANCE SHEET (Dated: 31st March 2024)

Note: No 'restricted' asset funds are currently held on the Balance Sheet.

	<u>Total Funds</u> <u>(Unrestricted)</u>	<u>Prior Year</u> <u>(Total)</u>	<u>Notes</u>
Fixed Assets:			
<i>Tangible Assets:</i>	9,102	9,989	Note 17
Total Fixed Assets:	9,102	9,989	
Current Assets:			
<i>Cash in Bank:</i>	21,349	24,514	
<i>Petty Cash:</i>	360	106	
Total Current Assets:	21,709	24,620	
Liabilities:			
Creditors falling due in 12 months:	-	-	
Total Current Liabilities:	-	-	
Net Current Assets/(Liabilities):	21,709	24,620	
TOTAL ASSETS/(LIABILITIES):	30,811	34,609	
Charity Funds:			
<i>Current Year Surplus:</i>			
<i>Unrestricted:</i>	(3,798)	6,577	
<i>Restricted:</i>	-	-	
<i>Prior Year carryover:</i>	34,609	28,032	
TOTAL CHARITY FUNDS:	30,811	34,609	

Balance Sheet approved by resolution of The Board of Trustees dated: 13th January 2025.

Signed on behalf of the Board of Trustees:

Frank Hayes

M. Gronow

Mr. Frank Hayes Date: 14th Jan 2025.
Trustee (Treasurer)

Mr. Martin Gronow Date: 14th Jan 2025
Trustee (Secretary)

NOTES TO ACCOUNTS:

General:

1. These financial statements have been prepared on an '*Cash Basis*' in accordance with Statement of Recommended Practice (SORP) issued by the Charities Commission (England & Wales) dated October 2019 and further in accordance with FRS 102. The trustees confirm that there has been no material departure from these reporting standards. Due to the small size of the charity (and as allowed under SORP guidelines), no *statement of cashflows* has been made. Additionally, accounts prepared on an '*Activity Basis*' are also deemed superfluous.
2. These financial statements have been prepared in compliance with applicable charity law pertaining in the England and Wales.
3. **Going Concern:** The trustees report that the charity currently remains viable as a '*going concern*'. It has a proven record in its fund raising capabilities (both internally and externally) and strong financial management controls and procedures. The charity is however, increasingly susceptible to the damaging effects of high inflation in the economy and in particular energy markets.
Going Concern Uncertainties: With the recent acquisition of premises on a 25 year lease at a peppercorn rent combined with self-generated income streams no material uncertainties are deemed to exist.
4. The charity 'The Port Men in Sheds' is a Public Benefit Entity.
5. **Key Assumptions:** In compiling these financial statements, the trustees have assumed that the charity's ongoing fund raising capabilities will not be severely constrained by the current overall economic climate of the country. During the year the Charity again performed well in its fund raising efforts; never-the-less, as a result of high inflation and possible contraction in the willingness of donors (both corporate and private) to donate to the charity, current cash assets may be impaired and liabilities increased as we move into the next reporting period. As at the time of reporting, annual inflation remains high at 4.7%. To help mitigate the risk of significant asset impairment the trustees attempt to maintain a £20,000 contingency reserve and are taking actions to increase self-sustainability of the charity's operations through increased internally generated income.
6. **Role of Volunteers:** As a charity *The Port Men in Sheds* (TPMiS) is highly dependent on the roles of volunteers. Indeed, in the case of TPMiS the charity currently has no paid or remunerated staff or employees and is therefore particularly beholden to the unpaid efforts of its volunteers and Trustees. During the reporting period the charity had a total of 7 active volunteers and 6 Trustees – without the unpaid support of these volunteers/trustees the Charity would be unable to operate.
7. **Disclosure of Trustees' Remuneration or Benefits:** During the reporting period no remuneration or benefits in kind were paid to Trustees and no related party agreements

were entered into. In addition, no expenses were paid to any Trustee during the reporting period.

8. **Auditor and Financial Service Fees:** During this accounting period accounting fees amounting to £500 have been paid for financial accounts verification.
9. **Policy on Valuation of Donated Goods and Services:** The Charity benefits substantially from the regular donation of goods and services and as such, when appropriate, such goods and services are recognised as income on the *Statement of Financial Transactions*. The policy for the valuation of such goods and services is contained in the Charity's '*Financial and Accounting Policy*' but may be summarised as follows:

Donated Services and use of Assets: Donated services and asset usage are valued at the likely cost of purchasing such services/asset usage directly from the commercial market on a like for like basis.

Donated Goods (not for resale): Are valued at the likely resale benefit to the Charity. Whilst this may require a degree of subjectivity, a conservative approach to such valuations is used to establish a fair value.

Notes to SoFT

10. Donations and grants include a single payment of £25,000 awarded by Stanlaw Abbey. A further significant source of donated funds are from small (<£500) donations from external organisations and individuals
11. Membership fees of £20 monthly are charged to access charity services.
12. In an effort to increase self-sufficiency the charity is seeking to increase revenues through the sale of shed made products/services and the taking on of small commissions. Moving forward it is expected that shed sales will continue to grow.
13. **Lease & Service Costs:** As of 29th February 2024, all prior existing lease obligations were satisfied and settled. From 4th January 2024 the charity has acquired premises under a 25 year lease at an annual peppercorn rent of £1.00/annum. In return the charity has assumed responsibility for the capital repair and maintenance of the building.
14. **Utility costs:** Utility costs eased back from the highs of the previous year.
15. In accordance with the charity's '*Finance and Accounting Policy*' all tools, equipment and assets costing less than £250 will be fully expensed in the accounting period. Tools/Equipment/Assets above £250 will be assigned to the asset register.
16. **Building maintenance costs:** From 4th January 2024 the charity acquired the Council owned Overpool Community Centre under a 25 year lease at a peppercorn rent. Upon acquisition the premises were in a state of disrepair requiring funds amounting to £14,850. These costs also include costs required to enable building change of use.

Notes to the Balance Sheet

17. **Assets & Depreciation:**

Currently the charity does not have assets on its asset register for which the need for revaluation exists.

The Charity maintains a '*Register of Assets*'. Capital items purchased at <£250 are immediately expensed whilst those above >£250 are capitalised. Due to the large number of small capital workshop tool items these are 'pooled' into a '*Small Tool Fund*'. Large equipment and machinery purchases/donations (>£500) are listed separately on the Asset Register.

Assets/Depreciation

	Machinery Equipment	Small Tool Pool	Misc.	Computers	Total
Cost or Valuation:					
<i>As at 01/04/2023:</i>	3,925	4,988	1,625	338	10,876
<i>Additions:</i>	-	-	-	-	-
<i>Disposals:</i>	-	-	-	-	-
<i>Transfers:</i>	-	-	-	-	-
As at 31/03/2024	3,925	4,988	1,625	338	10,876
Depreciation:					
<i>Depreciation rate:</i>	10%	5%	10%	25%	
<i>As at 01/04/2023</i>	392	249	162	84	887
<i>Adjustment on disposal/gain:</i>	-	-	-	-	-
Sub-total:	392	249	162	84	887
<i>Depreciation for period:</i>	392	249	162	84	887
<i>Impairments:</i>	-	-	-	-	-
<i>Transfers:</i>	-	-	-	-	-
Value as at 31/03/2024	3,141	4,490	1,301	170	9,102

Appendix 1

The Port Men in Sheds Financial Accounts for the Year to 31 March 2024

Independent verification

Testing was carried out on a sample of transactions from the Income and Expenditure Accounts. The transactions were either agreed back to the source documents or to the bank statements.

The opening and closing bank balances per the Accounts agreed back to the actual Bank Account Statements.

Petty cash summaries were checked.

Findings

I can confirm that the testing identified no material differences between the source documents and the Accounts. Discussions have been had with the Trustee's regarding the controls in place regarding the petty cash transactions and who has access to this, more regular checks are now in place.

As always with these type of businesses, it is impossible to confirm with 100% assurance that all of the income generated at events was paid into the business' bank account as there are no sales invoices generated for each and every transaction.

Recommendations

1 –Petty Cash reconciliation to be carried out at least monthly, with tighter controls on who has access to the Petty Cash and receipts to be kept for all purchases. Second person to review Petty Cash and evidence of said review should be kept e.g. signature, name and date.

2 -Sales invoice/receipts written for each sale made to help verify the completeness of income.

3 -Monthly review process to be implemented – bank analysis spreadsheet to be reviewed, agreed to bank statement, signed and counter signed with dates.

Sign off

I can confirm that the information contained in the Accounts for the year to 31 March 2024 are in line with the underlying transactions and that they fairly represent the data that is available to review.

Signature:  _____ Date: 28 JANUARY 2025

Name: Paul Lounds, FCA

THE PORT MEN IN SHEDS

England & Wales - Charity number 1191097

Accounts

community. This includes involvement with and supporting community projects and working with other charities and voluntary organizations.

'The Port Men in Sheds' facility (a large industrial unit) is in Ellesmere Port and is open to people in all surrounding areas.

The Trustees are focused on delivering public benefit through the services they offer and have full regard to the guidance issued by the Charity Commission in this respect. The various resources of the charity are directed purely at supporting these public benefit objectives. The principal resources allocated are primarily costs associated with operating our large industrial unit with all the associated lease, utilities and consumable material costs.

There are no staff so do not have staff costs. Trustees and Volunteers receive no payments with the exception of reasonable modest expenses reimbursement which is fully documented.

Trustees and volunteers receive no other benefits as a result of their role.

This is the first annual report to the charity commission and only covers a 6-month period. As a result, the activities covered in this reporting period are focused on building the governance and other administration activities required to establish the services. The target opening date of the service is 1st September 2021 so many of the more practical tasks such as securing premises, securing finance and building a client base are outside the date range of this report.

The activities completed in scope of the reporting dates are:

- Establishment of the Charity as a CIO. Number 1191097.

- Development and building a board of Trustees.

- Securing a property to base our services from in Ellesmere Port.

- Opening a High Street bank current account.

- Securing sufficient working capital(see financial sector).

Development of a series of relevant policies including Health & Safety.

Building a client database.

Creation of a comprehensive website.

The charity cannot claim to have delivered significant benefits to its clients or wider society in this initial 6 months but all the building blocks have been established to begin delivering these benefits by the planned launch date of 1st September 2021.

Achievements and Performance summary.

Achievements against objectives set	SORP Ref Para 1.41	The objectives for this reporting period were primarily around establishing the charity and this was completed successfully by 1st September 2020 with a board of trustees and full governance documentation.
Performance of fundraising activities against objectives set	Para 1.41	Very modest funding target were set and these were achieved. See financial report.
Investment performance against objectives	Para 1.41	No investments were processed.

Additional optional information.

Policy on grant making	Para 1.38	n/a
Policy on social investment including program related investment	Para 1.38	The charity has not engaged in any form of investment.

Contribution made by volunteers	Para 1.38	The charity is dependent on volunteers to operate the service on a day to day basis. A recruitment drive has identified such a group.
---------------------------------	-----------	---

Financial Review

Review of the charity's financial position at the end of the period	Para 1.21	The financial position is as expected. A small balance of working capital is held in a new Current Account (Co-Operative Bank).
Statement explaining the policy for holding reserves stating why they are held	Para 1.22	No reserve is held and no reserve policy has as yet been developed.
Amount of reserve held	Para 1.22	Nil.
Reasons for holding zero reserves	Para 1.22	The charity does not yet have the capability to build reserves. The impact of the Pandemic has blocked any such fundraising activity.
Details of fund materially in deficit	Para 1.24	n/a
Explanation of any uncertainties about the charity continuing as a going concern	Para 1.23	Future sustainability will be dependent on the charity obtaining support from a variety of funders. This will begin in September 2021.
The charity's principal sources of funds (including any fundraising)	Para 1.47	

Investment policy and objectives including any social investment policy adopted	Para 1.46	No investments have been made and no plan exists to do so in the future.
---	-----------	--

Risk profile.

A description of the principal risks facing the charity	Para 1.46	The trustees are in the process of developing a risk register but current risks are <ol style="list-style-type: none"> 1. A H&S issue. 2. Lack of funds.
---	-----------	--

Structure, Governance and Management.

The charity is a Foundation CIO and uses a to frame its governance.

A board of Trustees has been created via a formal interview and election process.

Policies and procedures adopted for the induction and training of trustees	Para 1.51	Trustees and volunteers are selected via interview by other trustees. No specific training has been identified for trustees but volunteers are First Aid Trained.
The charity's organizational structure and any wider network with which the charity works	Para 1.51	A board of trustees has overall responsibility with a chairperson, deputy chair and treasurer roles voted in each year.

Relationship with any related parties	Para 1.51	We have a financial relationship with AgeUk Cheshire a local Cheshire charity. Age UK Cheshire are the master tenant of our premises. We plan to be their sub tenant.
---------------------------------------	-----------	---

Reference and Administrative details

Charity name	The Port Men in Sheds
Other name the charity uses	n/a
Registered charity number	1191097
Charity's principal address	Unit 25, Junction 8 Business Park Roscliffe Road, Ellesmere Port CH65 3AS

Names of the charity trustees who manage the charity

	Trustee name	Office	Dates acted if not for whole year	Name of person (or body) entitled to appoint trustee (if any)
1	Mike Doherty	Chair		Board of Trustees
2	Chris Bacon	Deputy Chair		Board of Trustees
3	David Watson	Treasurer		Board of Trustees
4	Frank Hayes		02/03/2021	Board of Trustees
5	Steve Morris		19/03/2021	Board of Trustees
6	Peter Stanford			Board of Trustees
7	George White		01/03/2021	Board of Trustees
8	Stuart Clubbe		01/03/2021	Board of Trustees

Corporate trustees - names of the directors at the date the report was approved

Director name		
None		

Name of trustees holding title to property belonging to the charity

Trustee name	Dates acted if not for whole year	
None		

Funds held as custodian trustees on behalf of others

Description of the assets held in this capacity	None
---	------

Name and objects of the charity on whose behalf the assets are held and how this falls within the custodian charity's objects	None
Details of arrangements for safe custody and segregation of such assets from the charity's own assets	N/A

Exemptions from disclosure

Reason for non-disclosure of key personnel details

N/A

Date	Credit	Debit	Intermediate Balance	Comments
14-Sep-20	£1,241.45		£1,241.45	First payment from FoMIS to The Port Men in Sheds
23-Sep-20		£10.98	£1,230.47	Bank Charges - Sept 20
29-Oct-20	£200.00		£1,430.47	Donation from Alan Darlington.
9-Nov-20	£120.00		£1,550.47	Donation from Jim Rowe
4-Dec-20		£10.90	£1,539.57	Bank Charges - Dec 20
Transfer to Community Directplus Account				
15-Feb-21	£1,534.57		£1,534.57	Transfer from Standard Tariff account less £5 deposited by Co-op to open new account.

19-Feb-21	£287.89		£1,822.46	Miscellaneous donations.
31-Mar-21			£1,822.46	Closing Balance.

Appendix 1. Financial Report. Balance Sheet.

The Port Men in Sheds - Financial Summary

1st September 2020 - 31 March 2021

Declarations

The trustees declare that they have approved the trustees' report above.

Signed on behalf of the charity's trustees

Signature(s)

M Doherty

Full name(s)

Mike Doherty

Position (eg
Secretary, Chair,
etc)

Chair

Date

9th December 2021