



Trustees' Annual Report for the period							
	Period start date				Period end date		
<b>From</b>	01	01	2024	<b>To</b>	31	12	2024

Section A Reference and administration details

<b>Charity name</b>	ASSOCIATION OF BIOMEDICAL ENGINEERS, MEDICAL ENGINEERS, AND BIOENGINEERS
<b>Other names charity is known by</b>	BioMedEng Association
<b>Registered charity number (if any)</b>	1191005
<b>Charity's principal address</b>	Department of Bioengineering, Imperial College London, Bessemer Building, London
<b>Postcode</b>	SW7 2AZ

Names of the charity trustees who manage the charity

	Trustee name	Office (if any)	Dates acted if not for whole year	Name of person (or body) entitled to appoint trustee (if any)
1	Prof Alicia El Haj	University of Birmingham		
2	Prof Anthony Bull	Imperial College London		
4	Prof Hazel Screen	Queen Mary University of London		
5	Prof Vanessa Diaz	University College London		
6				
7				
8				
9				
10				
11				
12				
13				
14				
15				
16				
17				
18				

Names of the trustees for the charity, if any, (for example, any custodian trustees)

Name	Dates acted if not for whole year

## Names and addresses of advisers (Optional information)

Type of adviser	Name	Address

## Name of chief executive or names of senior staff members

Dr Gifty Tetteh – Head of Operations

## Section B Structure, governance and management

### Description of the charity's trusts

Type of governing document (eg. trust deed, constitution)	Charitable Incorporated Organisation Constitution
How the charity is constituted (eg. trust, association, company)	Association Model Constitution
Trustee selection methods (eg. appointed by, elected by)	Charity trustees are appointed by a resolution of the members at the annual general meeting.  <b>Co-opted Trustees</b> can also be appointed at any time by current trustees.

### Additional governance issues (Optional information)

You **may choose** to include additional information, where relevant, about:

- policies and procedures adopted for the induction and training of trustees;
- the charity's organisational structure and any wider network with which the charity works;
- relationship with any related parties;
- trustees' consideration of major risks and the system and procedures to manage them.

The BioMedEng Association Trustees' Board for the 2024 reporting period comprised of the four Trustees (Profs Alicia El Haj, Anthony Bull, Hazel Screen and Vanessa Diaz), the current Chair of Council (Prof Martin Knight, who will become a Co-opted Trustee at the end of the current Chair of Council role in 2025) and the Head of Operations (Dr Gifty Tetteh).

Similar to the 2023 report, the Trustees' Board is supported by the formal members of the Association, including the Chairs of the Working Groups (Education, Equality, Diversity and Inclusion, Early Career Researchers, Industry and Sponsorship, and Communications and Website) and the BioMedEng Council.

In addition to the formal members, the Association has established a wider affiliate membership provision. As detailed in our previous reports, the affiliate memberships are open to practising engineers, clinicians, students, and anyone who is interested in Biomedical Engineering, Medical Engineering and Bioengineering.

We welcome applications from UK and International members from Industry, Academic Institutions and Research Centres, Clinical Establishments and Hospitals, Governmental and Non-Governmental Organisations, amongst others.

### Summary of the objects of the charity set out in its governing document

Our charitable objects remain unchanged. The BioMedEng Association aims to advance education for the public benefit in biomedical engineering, medical engineering, and bioengineering, in particular but not exclusively by:

1. organising and holding scientific meetings and conferences;
2. and promoting the study and practice of biomedical engineering, medical engineering and bioengineering.

The Association is a professional body for engineers, clinicians, researchers, and students working within Biomedical Engineering, Medical Engineering and Bioengineering disciplines.

**BioMedEng24 Conference** – The 2024 annual conference of the Association, BioMedEng24, took place on 5<sup>th</sup> – 6<sup>th</sup> September at the Mile End Campus of Queen Mary, University of London (QMUL).

The conference was hosted by Profs. Zion Tse (BioMedEng24 Chair), Hazel Screen, Martin Knight, Julia Shelton, Thomas Iskratsch, Julien Gautrot, and Dr. Azadeh Rezaei from the QMUL School of Engineering and Materials Science.

The conference was opened by Prof. Andrew Livingston, the Vice-Principal of Research at QMUL. The packed BioMedEng24 programme included a plenary talk, and a newly introduced plenary debate session with 6 speakers, which was moderated by Prof Martin Knight from QMUL.

The BioMedEng24 plenary talk on “*New Bioengineered Materials for Advanced Therapeutics and Ultrasensitive Biosensing*” was delivered by Prof. Dame Molly Stevens from the University of Oxford.

### Summary of the main activities undertaken for the public benefit in relation to these objects (include within this section the statutory declaration that trustees have had regard to the guidance issued by the Charity Commission on public benefit)



#### Plenary Speaker

Prof. Dame Molly Stevens  
University of Oxford

*New Bioengineered Materials for Advanced Therapeutics and Ultrasensitive Biosensing*



#### Dinner Speaker

Prof. Karen Salt

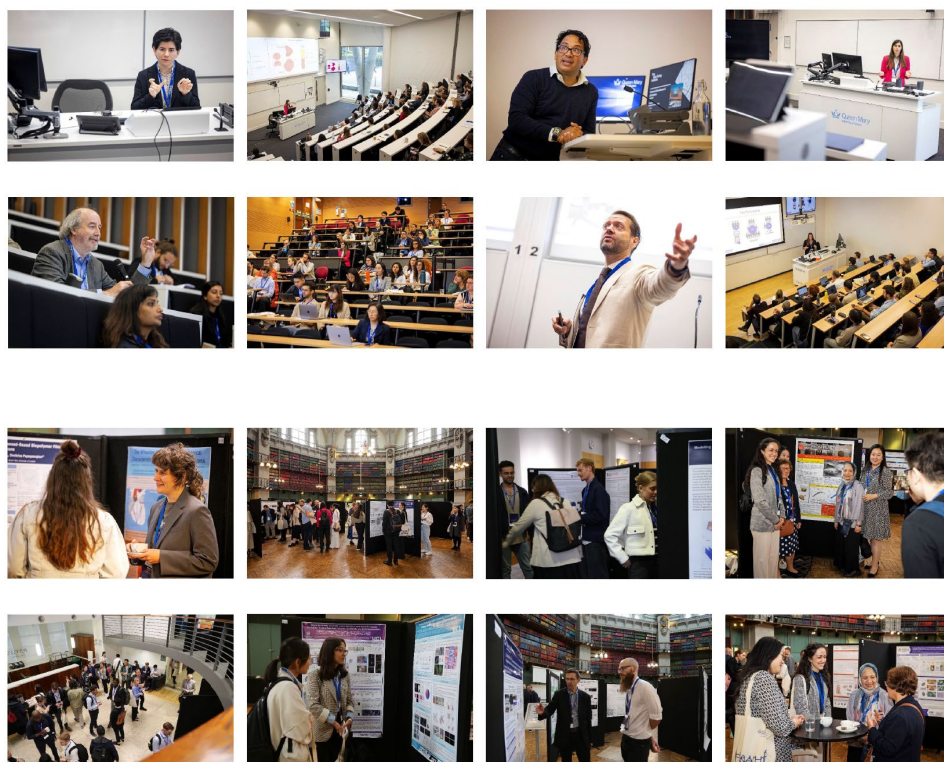
UK Research and Innovation (UKRI)  
UKRI Trusted Research and Innovation Portfolio Director

The plenary debate speakers included:

- Prof. Anne Vanhoostenberghe and Dr Anna Barnes from King's College London,
- Prof Matthew Dalby from Glasgow University,
- Ms Jane John-Lewis from Intuitive Medical,
- Prof Alvaro Mata from the University of Nottingham and
- Prof Hazel Screen from QMUL.



With over 400 abstract submissions to BioMedEng24, the conference programme included four (4) parallel keynote sessions which featured 26 keynote speakers, 1 dinner speaker (Prof. Karen Salt from UKRI), around 100 oral presentations, 300 posters, and 3 workshops (ECR, Women & Child Health Symposium, and Ansys Workshops). In addition to these, the conference hosted the BioMedEng Association AGM and the BioMedEng Council Meeting.



BioMedEng24 was supported by three (3) Gold Sponsors, four (4) Silver Sponsors, and eight (8) Bronze Sponsors. Also, the RSPCA and Animal Free Research kindly sponsored a £1,000 award for the best presentation in support of animal replacement.





The conference was held in QMUL Mile End Campus, with the main sessions held in the Great Hall, People Palace, Engineering Building, Queen's Building, Graduate Centre, and Geography Building. This arrangement allowed for optimal space allocation for the keynote, oral, and poster presentations whilst ensuring enough space for lunch and networking.



With 170 dinner tickets sold, the dinner reception was well-received with an inspiring talk from Prof. Karen Salt from the UKRI, as the after-dinner speaker. The newly formed BioMedEng Band, made up of BioMedEng Association members delivered a spectacular performance, finishing the conference dinner on a high note.



In total, BioMedEng24 welcomed over 430 attendees from 51 universities over Europe and various industrial organisations.

To ensure continuity between the BioMedEng conferences, Dr Gifty Tetteh, Head of Operations of the Association, met with the BioMedEng24 Chair on a monthly basis to address the team's concerns, assist with newsletter communications, and abstract submission, delegate registrations, payment enquiries, website and conference administration, amongst others.

They also met post conference to finalise the accounts and gather feedback and constructive suggestions for improving future conferences, whilst arranging for funds to be transferred in line with the proceeds split arrangements.

More information about the BioMedEng24 conference is available at <https://biomedeng.org/biomedeng24>

#### **Additional details of objectives and activities (Optional information)**

You **may choose** to include further statements, where relevant, about:

- policy on grantmaking;
- policy programme related investment;
- contribution made by volunteers.

### Summary of the main achievements of the charity during the year

**4<sup>th</sup> BioMedEng AGM** – The 2024 AGM of the BioMedEng Association took place at the BioMedEng24 Conference on 5<sup>th</sup> - 6<sup>th</sup> September 2024 in the Great Hall at QMUL.

This year's AGM was divided into two parts, the first part of the AGM (AGM A) held on 5<sup>th</sup> Sept 2024 focussed on presentations from the Working Group Chairs and the second part of the AGM (AGM B), held on 6<sup>th</sup> Sept 2024, was dedicated to operational updates from the Association. There were no elections at this year's AGMs.

Like previous years, the AGMs provided an opportunity for both formal and affiliate BioMedEng members to review activities of the Association, propose initiatives, and discuss important updates about the charity.

#### AGM A

The first part of the AGM was chaired by Prof Martin Knight, leader of the Working Group Chairs and Chair of Council for the BioMedEng Association. Updates from the Working Group Chairs are summarised below:

**Early Career Researchers Working Group:** Currently chaired by Dr Rosti Readioff from the University of Liverpool, the ECR Working Group currently has 23 serving members who contribute to at least one of its three committees: communications, training and events, and mentoring committees. The working group has been meeting bi-monthly to track activities and plan for future directions.

The communications committee of the ECR Working Group has been engaging with the ECR members of the Association through newsletters and social media content. Four newsletters were sent out to the ECR members, and a new dedicated ECR webpage:

([www.biomedeng.org/ecr/](http://www.biomedeng.org/ecr/)) has been set up and promoted.

The training and events committee for the ECR Working Group organised a panel discussion on ECR career paths during the BioMedEng24 conference at QMUL. The panel comprised individuals from startups, industry, and academia who shared their perspectives with ECR members of the Association. The committee is currently engaging with the Industry Working Group to develop training events between conferences with industry sponsors to extend the member's support throughout the year.

The mentoring committee ran a mentoring scheme, manually pairing 21 mentor-mentees. The feedback on the first round of the mentoring scheme (January 2024 - October 2024) has been very positive, with some mentees requesting the freedom to select mentors. Due to a predicted increase in both the number of mentors and mentees and based on the mentees' feedback, an automated system was needed.

The Association has therefore invested in developing a new webpage for the mentoring scheme within the dedicated ECR website. The new webpage for the mentoring scheme is currently under testing, and it is expected to be released to the BioMedEng members in January 2025.

The plan for next year is to continue building on our existing activities and focus on increasing engagement and communication to provide tailored support to the Association's ECR members.

**Industry Working Group:** Chaired by Prof Mehran Moazen from University College London, the Industry WG priorities are to expand our sponsors/interaction with industry; plan future activities and ensure continuity of WG meetings and expand its membership.

Considering these priorities, the main headlines for 2023-24 were:

1. to organised and run an online event on 14th June 2024 bringing together several industries and wider stakeholders to discuss industry-academia interactions, it is barriers, potential opportunities. Several interactions/activities were then started based on that event and work is ongoing to organise a similar event in 2025 that itself seems to be valuable for the BioMedEng community.
2. membership of the WG has grown with additional academic and industry members having joined the WG, enriching its discussion and interactions not only within the WG but also in terms of interacting with other WG i.e. Early Career and Education and supporting local organisers.

**Education Working Group:** Chaired by Dr Anita Ghag from the University of Birmingham, the Education Working Group made good progress in 2024. They added a new member to the group, Manuela Trejo from Loughborough University and focussed on working on two main initiatives:

1. Lesson in a box type of activity which could be widely disseminated across secondary schools to increase awareness of biomedical engineering. They are currently finalising the activities to select the most engaging and resource appropriate ones.
2. EDI in education webinar in conjunction with the EDI working group. The team were working on this and aiming to host an event in spring 2025.

**Equality, Diversity and Inclusions Working Group** – Chaired by Prof Gwen Reilly from the University of Sheffield, the EDI Working Group has eight core members, with membership drawn from volunteers within the BioMedEng community including senior Council members and early career researchers. The group aims to represent the host cities of our recent conference venues, different regions of the country and underrepresented groups.

The main aims of the EDI working group are to

1. Understand barriers to inclusion within our BioMedEng society and related engineering fields.
2. Increase visibility, representation and progression of underrepresented groups in the BioMedEng community (collaboration with ECR team).
3. Support Biomedical Engineering research that is more inclusive in terms of both the end users needs and contributors to the design (collaboration with industry team)

At the BioMedEng24 conference, the EDI Working Group hosted a parallel session titled 'Inclusive engineering and technology' to facilitate a discussion of EDI amongst BioMedEng members and showcase a diversity of biomedical engineering research.

The chair also held a discussion about EDI issues and asked the members to comment on what they felt were the main barriers to creating a truly equal and diverse biomedical engineering programme. The most common responses related to funding, including the difficulty of funding



conference attendance and overall inequities in research funding. The second most frequent response concerned childcare and other commitments that prevents travel and working away. This discussion was followed by a variety of talks on 'enabling' technologies such as restoration of eye function, turban wearing and its risks/benefits during a bicycle accident, and melanin effects in oximetry measurements. There was also a presentation about an initiative at Herriot Watt University funded by the Royal Academy of Edinburgh to roll out some recommendations on inclusive design in biomechanics research projects.

The EDI Working Group's focus for 2025 is soliciting and identifying abstracts which demonstrate an inclusive engineering approach, at the BioMedEng25 conference. They are also planning to award a prize for the abstract that demonstrates inclusivity and diversity in the work presented. Also, they plan to facilitate training on how to embed inclusivity into the study design when writing grant proposals. This will be particularly important to early career researchers in the BioMedEng Association.

### **AGM B**

The second part of the AGM was chaired by Prof Anthony Bull, Chair of Trustees of the BioMedEng Association.

Similar to last year's arrangement, the Association held a separate Council meeting prior to the 4<sup>th</sup> AGM, to review the action items from the 3<sup>rd</sup> AGM and discuss key strategic Association initiatives prior to the 4<sup>th</sup> AGM.

**Trustee Elections:** The Chair reminded members that there will be no Trustee elections in this AGM, as the board has decided to wait and appoint a new Chair of Council when the current Chair of Council becomes a Trustee in January 2026, before holding further Trustee elections, to allow members to stand for either Chair of Council or Trustee positions, if interested.

**2024 BioMedEng Special Awards** - The 2024 Innovation Award was presented to Prof Yan Yan Shery Huang from the University of Cambridge, whilst the 2024 Legacy Award was presented to Prof David Firmin from Imperial College London. Both presentations were made at the BioMedEng24 conference dinner.

Like previous years, the **BioMedEng Legacy Prize** was awarded to a UK Bioengineer/ Biomedical Engineer/ Medical Engineer whose career-long research and mentoring has contributed immensely to inspiring and training the next generation of academics, researchers, and students in the discipline.

Similarly, the **BioMedEng Innovation Prize** was awarded to a UK Bioengineer/ Biomedical Engineer /Medical Engineer whose imaginative and ground-breaking work has opened up new fields in the discipline and/or led to new technologies that support medical interventions.

**Operational Update** - Dr Gifty Tetteh, presented the Association's operational update for 2023 at the Association's 4<sup>th</sup> AGM. This focussed on the Charity Objects, Committee Changes, Membership Updates, Finance and Sustainability, and a reminder of the nomination process for the BioMedEng Special Awards.

As previously mentioned, the Association's charitable objects remain

unchanged.

**Committee Changes:** Another round of Council elections was held in February 2024 as seven Council positions expired in December 2023. One of these members decided not to stand for re-election, three stood for re-election and another has moved abroad.

The BioMedEng25 Chair - Dr Philip Riches, was invited to join Council and elections were held for new nominees and previous candidates in February 2024. In total, eight members joined to serve Council on a three-year term until December 2026, including Prof Ashraf Khir - Durham University, Dr Asimina (Melina) Kazakidi - Uni. of Strathclyde, Prof Yalin Zheng - Uni. of Liverpool, Dr Daniel Abasolo - University of Surrey, Prof Perumal Nithiarasu - Swansea University, Prof Amy Zavatsky - University of Oxford, Prof Sotiris Korossis - Loughborough Uni and Dr Philip Riches - University of Strathclyde.

**Membership Growth:** There has been an increase of over 350 membership applications to the Association since the 2023 report. The membership update at the 2<sup>nd</sup> AGM in 2022, showed an increase from 490 applications from 64 institutions in Sept 2021, to 734 applications from 96 institutions in Sept 2022. Whilst the 2023 report outlined the details of 1,055 application from 131 Institutions.

The membership breakdown at the 4<sup>th</sup> AGM detailed 1,406 applications from 171 Institutions, with 761 paid memberships, comprising of 407 Full Members, 352 PhD and MRes Students and 2 Retired/Emeritus. The remaining 645 free memberships were for UG and MSc memberships.

Like previous years, GT highlighted key institutions with more than 10 BioMedEng members and those that have made significant gains over the 2023 – 2024 report period. A list of the 2023 and 2024 BioMedEng membership breakdown by institutions are included below.

### Membership Breakdown - Institutions with 10+ members

Imperial College London	190
The University of Sheffield	105
University College London	95
University of Strathclyde	64
QMUL	31
University of Southampton	26
City London of University	22
Swansea University	22
University of Bradford	20
University of Surrey	19
Manchester Metropolitan University	18
University of Cambridge	16
Aston University	15
University of Liverpool	15
University of East London	14
University of Birmingham	12
Kings College London	10
University of Leeds	10

Imperial College London	232
The University of Sheffield	133
University College London	129
University of Strathclyde	87
QMUL	85
University of Southampton	36
City University of London	25
Swansea University	24
Aston University	23
University of Cambridge	22
University of Bradford	21
University of Liverpool	21
Kings College London	20
University of Surrey	19
Manchester Metropolitan University	18
University of East London	17
University of Birmingham	15
University of Leeds	13
University of Oxford	13
Loughborough University	12
Newcastle University	11
University of Glasgow	11
University of Manchester	11
University of Nottingham	10

**2023**

**2024**

**Affiliate Memberships** – The Association membership rates remain unchanged. The membership rates for the 2024 reporting year were £50/year for Full members, £20/year\* for Research Student Members (PhD, MPhil and MRes), £75 for 5 years for Retired/Emeritus Members, and free annual memberships to verified undergraduate and MSc students.

As detailed in our previous reports, the Association's membership is open to practising engineers, clinicians, students, and anyone who is interested in Biomedical Engineering, Medical Engineering and Bioengineering. We welcome applications from UK and International members from Industry, Academic Institutions and Research Centres, Clinical Establishments and Hospitals, Governmental and Non-Governmental Organisations, amongst others.

**Finance and Sustainability:** GT also discussed the details of the 2023 Independently Examined Accounts at the 4<sup>th</sup> AGM. This showed an income and expenditure of £73,412 and £ 77,665, respectively.

The high expenditure for the 2023 reporting period resulted from the delayed payments of the UCL conference expenses at £57,387.05 and host institution contributions for 2021 at £5,952.00 and 2022 at £10,000.00, which were paid out and captured in the 2023 reports.

With a 2022 balance B/F of £93,858.01, the 2023 B/F was £ 89,605.15 with liabilities of £59,508.85, comprising of the Swansea-BioMedEng23 conference payments at £40,908.85, BioMedEng23 Best Poster, talk etc conference award payments at £600, and the 2023 Host Institution Contribution at £18k.

This will leave the Association with an overall balance of £30,096.3 for 2023, (£20,518.96 for 2022) after the 2023 liabilities have been paid out.

**Brief statement of the charity's policy on reserves**

The BioMedEng23 conference at Swansea had a total income and expenditure of £101,586.61 and £64,608.85, respectively. This left a surplus of £36,977.76, which was generously shared with the Association.

The organisers at Swansea University kept £10,000 of the conference proceeds and donated £26,977.76 to the Association.

The Trustees acknowledged the significant contribution from Swansea and thanked the Conference Co-Chairs and team, for their generous donation to the Association.

The actual closing balances, after all liabilities have been paid for the 2021, 2022 and 2023 financial years were £11,952, £20,518.96, and £30,096.3, respectively.

The 2024 accounts have been independently examined with a copy attached to this report.

As of 31 December 2024, the closing balance for the Association stood at £135,468.23. However, at this time, the Association has received most of the conference income and QMUL incurred most of the expense. This is to be reconciled early in 2025, but initial figures indicate that there is an overall conference profit of around £47,289.17 and QMUL will generously donate 75% of this to the Association.

Please see the attached independently examined accounts for further details on the Association's financial position.

**Details of any funds materially in deficit**

No funds are in deficit

**Further financial review details (Optional information)**

You **may choose** to include additional information, where relevant about:

- the charity's principal sources of funds (including any fundraising);
- how expenditure has supported the key objectives of the charity;
- investment policy and objectives including any ethical investment policy adopted.

As detailed in the independently examined 2024 accounts attached, the Association's core income is generated from membership dues and proceeds from hosting dedicated events and the annual conference.

--

<b>Section F</b>	<b>Other optional information</b>
------------------	-----------------------------------

--

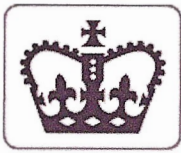
<b>Section G</b>	<b>Declaration</b>
------------------	--------------------

The trustees declare that they have approved the trustees' report above.

Signed on behalf of the charity's trustees

<b>Signature(s)</b>	GAJTetteh	
<b>Full name(s)</b>	Dr Gifty Tetteh	
<b>Position (eg Secretary, Chair, etc)</b>	Head of Operations	
<b>Date</b>	31.12.24	





Section A

Independent Examiner's Report

Report to the trustees/  
members of

ASSOCIATION OF BIOMEDICAL ENGINEERS, MEDICAL ENGINEERS  
AND BIOENGINEERS

On accounts for the year  
ended

31/12/2024

Charity no  
(if any)

1191005

Set out on pages

4 - 6

I report to the trustees on my examination of the accounts of the above  
charity ("the Trust") for the year ended 31/12/2024.

Responsibilities and  
basis of report

As the charity trustees of the Trust, you are responsible for the preparation  
of the accounts in accordance with the requirements of the Charities Act  
2011 ("the Act").

I report in respect of my examination of the Trust's accounts carried out  
under section 145 of the 2011 Act and in carrying out my examination, I  
have followed the applicable Directions given by the Charity Commission  
under section 145(5)(b) of the Act.

Independent  
examiner's statement

I have completed my examination. I confirm that no material matters have  
come to my attention (other than that disclosed below \*) in connection with  
the examination which gives me cause to believe that in, any material  
respect:

- accounting records were not kept in accordance with section 130 of  
the Act or
- the accounts do not accord with the accounting records

I have no concerns and have come across no other matters in connection  
with the examination to which attention should be drawn in order to enable a  
proper understanding of the accounts to be reached.

*\* Please delete the words in the brackets if they do not apply.*

Signed:

Date: 28/07/2025

Name:

Charles Osei, BSc (Hons), MSc, FCIE, AFA, ATA, MCIPP

Relevant professional  
qualification(s) or body  
(if any):

Association of Charity Independence Examiners

Address:

Flat 3, 11 Rochdale Way

Deptford

London SE8 4LY

Only complete if the examiner needs to highlight matters of concern (see CC32, Independent examination of charity accounts: directions and guidance for examiners).

**Give here brief details of any items that the examiner wishes to disclose.**



Charity Name

No (if any)

**ASSOCIATION OF BIOMEDICAL ENGINEERS,  
MEDICAL ENGINEERS AND BIOENGINEERS**

**1191005**

**CC16a**

## Receipts and payments accounts

For the period from	Period start date	To	Period end date
	01/01/2024		31/12/2024

### Section A Receipts and payments

	Unrestricted funds to the nearest £	Restricted funds to the nearest £	Endowment funds to the nearest £	Total funds to the nearest £	Last year to the nearest £
<b>A1 Receipts</b>					
Members' subscriptions	9,450	-	-	9,450	5,330
Industry Event	-	-	-	-	-
Conference Fees	100,615	-	-	100,615	68,075
Sheffield Conference Fees	-	-	-	-	-
Other	-	-	-	-	7
<b>Sub total (Gross income for AR)</b>	<b>110,065</b>	<b>-</b>	<b>-</b>	<b>110,065</b>	<b>73,412</b>
<b>A2 Asset and investment sales, (see table).</b>					
	-	-	-	-	-
	-	-	-	-	-
<b>Sub total</b>	<b>-</b>	<b>-</b>	<b>-</b>	<b>-</b>	<b>-</b>
<b>Total receipts</b>	<b>110,065</b>	<b>-</b>	<b>-</b>	<b>110,065</b>	<b>73,412</b>

### A3 Payments

Refunds	867	-	-	867	539
Processing Fees	1,820	-	-	1,820	1,167
BioMedEng24 Expenses	92	-	-	92	-
Website Expenses - ECR Membership	1,520	-	-	1,520	1,481
Video Hosting	83	-	-	83	83
BioMedEng22 Conference Chairs Gifts	-	-	-	-	91
BioMedEng23 Costs and Charges- Swansea Uni	40,909	-	-	40,909	-
BioMedEng23 Conference Awards	400	-	-	400	-
BioMedEng22 Costs and Charges - UCL	-	-	-	-	57,387
2023 Host Institution Contribution- Imperial	18,000	-	-	18,000	10,000
2021 Host Institution Contribution- Imperial	-	-	-	-	5,952
Operational - Accommodation and Internet	-	-	-	-	311
Independent Examination	350	-	-	350	300
BioMedEng23 Special Awards	162	-	-	162	156
Operational - Travel	-	-	-	-	102
Operational - Condolences	-	-	-	-	77
Stationary and Posting	-	-	-	-	19
<b>Sub total</b>	<b>64,203</b>	<b>-</b>	<b>-</b>	<b>64,203</b>	<b>77,665</b>

### A4 Asset and investment purchases, (see table)

	-	-	-	-	-
	-	-	-	-	-
<b>Sub total</b>	<b>-</b>	<b>-</b>	<b>-</b>	<b>-</b>	<b>-</b>

<b>Total payments</b>	<b>64,203</b>	<b>-</b>	<b>-</b>	<b>64,203</b>	<b>77,665</b>
-----------------------	---------------	----------	----------	---------------	---------------

<b>Net of receipts/(payments)</b>	<b>45,862</b>	<b>-</b>	<b>-</b>	<b>45,862</b>	<b>- 4,253</b>
<b>A5 Transfers between funds</b>					
<b>A6 Cash funds last year end</b>	<b>89,604</b>	<b>-</b>	<b>-</b>	<b>89,604</b>	<b>93,857</b>
<b>Cash funds this year end</b>	<b>135,466</b>	<b>-</b>	<b>-</b>	<b>135,466</b>	<b>27/07/2025 89,604</b>



## Section B Statement of assets and liabilities at the end of the period

Categories	Details	Unrestricted funds to nearest £	Restricted funds to nearest £	Endowment funds to nearest £
<b>B1 Cash funds</b>	Closing Balance - Unrestricted Funds	135,466	-	-
	Closing Balance - Restricted Funds	-	-	-
		-	-	-
	<b>Total cash funds</b>	135,466	-	-
	(agree balances with receipts and payments account(s))	OK	OK	OK

	Details	Unrestricted funds to nearest £	Restricted funds to nearest £	Endowment funds to nearest £
<b>B2 Other monetary assets</b>			-	-
		-	-	-
		-	-	-
		-	-	-
		-	-	-
		-	-	-

	Details	Fund to which asset belongs	Cost (optional)	Current value (optional)
<b>B3 Investment assets</b>			-	-
			-	-
			-	-
			-	-
			-	-

	Details	Fund to which asset belongs	Cost (optional)	Current value (optional)
<b>B4 Assets retained for the charity's own use</b>			-	-
			-	-
			-	-
			-	-
			-	-
			-	-
			-	-
			-	-
			-	-

	Details	Fund to which liability relates	Amount due (optional)	When due (optional)
<b>B5 Liabilities</b>		-	-	
			-	
			-	
			-	
			-	

Signed by one or two trustees on behalf of all the trustees

Signature

Print Name

Date of approval



Professor Hazel Screen

25/07/25

**ASSOCIATION OF BIOMEDICAL ENGINEERS,  
MEDICAL ENGINEERS AND BIOENGINEERS**

**Registered Charity No.**

**1191005**

**FINANCIAL ACCOUNTS  
FOR THE YEAR ENDED 31 DECEMBER 2024**

**CONTENTS**

**Page**

1	Legal and Administrative
2 -3	Independent Examiner report
4 - 5	Receipts and Payments Accounts
6	Statement of Assets and Liabilities



**ASSOCIATION OF BIOMEDICAL ENGINEERS,  
MEDICAL ENGINEERS AND BIOENGINEERS**

**Registered Charity No.**

**1191005**

**ORGANISATIONAL PROFILE**  
**FOR THE YEAR ENDED 31 DECEMBER 2024**

**TRUSTEES**

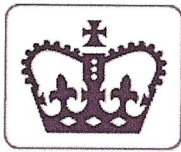
Prof Alicia El Haj  
Prof Anthony Bull  
Prof Hazel Screen

**REGISTERED OFFICE:**

The BioMedEng Association  
Department of Bioengineering  
Imperial College London  
Bessemer Building  
London UK  
SW7 2AZ

**ACCOUNTANTS:**

Charles Osei, BSc (Hons), MSc, FCIE, AFA, ATA, MCIPP  
Flat 3, 11 Rochdale Way  
Deptford  
London  
SE8 4LY



Section A

Independent Examiner's Report

Report to the trustees/  
members of

ASSOCIATION OF BIOMEDICAL ENGINEERS, MEDICAL ENGINEERS  
AND BIOENGINEERS

On accounts for the year  
ended

31/12/2024

Charity no  
(if any)

1191005

Set out on pages

4 - 6

I report to the trustees on my examination of the accounts of the above  
charity ("the Trust") for the year ended 31/12/2024.

Responsibilities and  
basis of report

As the charity trustees of the Trust, you are responsible for the preparation  
of the accounts in accordance with the requirements of the Charities Act  
2011 ("the Act").

I report in respect of my examination of the Trust's accounts carried out  
under section 145 of the 2011 Act and in carrying out my examination, I  
have followed the applicable Directions given by the Charity Commission  
under section 145(5)(b) of the Act.

Independent  
examiner's statement

I have completed my examination. I confirm that no material matters have  
come to my attention (other than that disclosed below \*) in connection with  
the examination which gives me cause to believe that in, any material  
respect:

- accounting records were not kept in accordance with section 130 of  
the Act or
- the accounts do not accord with the accounting records

I have no concerns and have come across no other matters in connection  
with the examination to which attention should be drawn in order to enable a  
proper understanding of the accounts to be reached.

*\* Please delete the words in the brackets if they do not apply.*

Signed:

Date: 28/07/2025

Name:

Charles Osei, BSc (Hons), MSc, FCIE, AFA, ATA, MCIPP

Relevant professional  
qualification(s) or body  
(if any):

Association of Charity Independence Examiners

Address:

Flat 3, 11 Rochdale Way

Deptford

London SE8 4LY

Only complete if the examiner needs to highlight matters of concern (see CC32, Independent examination of charity accounts: directions and guidance for examiners).

**Give here brief details of any items that the examiner wishes to disclose.**



Charity Name

No (if any)

**ASSOCIATION OF BIOMEDICAL ENGINEERS,  
MEDICAL ENGINEERS AND BIOENGINEERS**

**1191005**

**CC16a**

## Receipts and payments accounts

For the period from	Period start date 01/01/2024	To	Period end date 31/12/2024
------------------------	---------------------------------	----	-------------------------------

### Section A Receipts and payments

	Unrestricted funds to the nearest £	Restricted funds to the nearest £	Endowment funds to the nearest £	Total funds to the nearest £	Last year to the nearest £
<b>A1 Receipts</b>					
Members' subscriptions	9,450	-	-	9,450	5,330
Industry Event	-	-	-	-	-
Conference Fees	100,615	-	-	100,615	68,075
Sheffield Conference Fees	-	-	-	-	-
Other	-	-	-	-	7
<b>Sub total (Gross income for AR)</b>	<b>110,065</b>	<b>-</b>	<b>-</b>	<b>110,065</b>	<b>73,412</b>
<b>A2 Asset and investment sales, (see table).</b>					
	-	-	-	-	-
	-	-	-	-	-
<b>Sub total</b>	<b>-</b>	<b>-</b>	<b>-</b>	<b>-</b>	<b>-</b>
<b>Total receipts</b>	<b>110,065</b>	<b>-</b>	<b>-</b>	<b>110,065</b>	<b>73,412</b>

### A3 Payments

Refunds	867	-	-	867	539
Processing Fees	1,820	-	-	1,820	1,167
BioMedEng24 Expenses	92	-	-	92	-
Website Expenses - ECR Membership	1,520	-	-	1,520	1,481
Video Hosting	83	-	-	83	83
BioMedEng22 Conference Chairs Gifts	-	-	-	-	91
BioMedEng23 Costs and Charges- Swansea Uni	40,909	-	-	40,909	-
BioMedEng23 Conference Awards	400	-	-	400	-
BioMedEng22 Costs and Charges - UCL	-	-	-	-	57,387
2023 Host Institution Contribution- Imperial	18,000	-	-	18,000	10,000
2021 Host Institution Contribution- Imperial	-	-	-	-	5,952
Operational - Accommodation and Internet	-	-	-	-	311
Independent Examination	350	-	-	350	300
BioMedEng23 Special Awards	162	-	-	162	156
Operational - Travel	-	-	-	-	102
Operational - Condolences	-	-	-	-	77
Stationary and Posting	-	-	-	-	19
<b>Sub total</b>	<b>64,203</b>	<b>-</b>	<b>-</b>	<b>64,203</b>	<b>77,665</b>

### A4 Asset and investment purchases, (see table)

	-	-	-	-	-
	-	-	-	-	-
<b>Sub total</b>	<b>-</b>	<b>-</b>	<b>-</b>	<b>-</b>	<b>-</b>

<b>Total payments</b>	<b>64,203</b>	<b>-</b>	<b>-</b>	<b>64,203</b>	<b>77,665</b>
-----------------------	---------------	----------	----------	---------------	---------------

<b>Net of receipts/(payments)</b>	<b>45,862</b>	<b>-</b>	<b>-</b>	<b>45,862</b>	<b>- 4,253</b>
<b>A5 Transfers between funds</b>					
<b>A6 Cash funds last year end</b>	<b>89,604</b>	<b>-</b>	<b>-</b>	<b>89,604</b>	<b>93,857</b>
<b>Cash funds this year end</b>	<b>135,466</b>	<b>-</b>	<b>-</b>	<b>135,466</b>	<b>27/07/2025 89,604</b>



## Section B Statement of assets and liabilities at the end of the period

Categories	Details	Unrestricted funds to nearest £	Restricted funds to nearest £	Endowment funds to nearest £
<b>B1 Cash funds</b>	Closing Balance - Unrestricted Funds	135,466	-	-
	Closing Balance - Restricted Funds	-	-	-
		-	-	-
	<b>Total cash funds</b>	135,466	-	-
	(agree balances with receipts and payments account(s))	OK	OK	OK

	Details	Unrestricted funds to nearest £	Restricted funds to nearest £	Endowment funds to nearest £
<b>B2 Other monetary assets</b>			-	-
		-	-	-
		-	-	-
		-	-	-
		-	-	-
		-	-	-

	Details	Fund to which asset belongs	Cost (optional)	Current value (optional)
<b>B3 Investment assets</b>			-	-
			-	-
			-	-
			-	-
			-	-

	Details	Fund to which asset belongs	Cost (optional)	Current value (optional)
<b>B4 Assets retained for the charity's own use</b>			-	-
			-	-
			-	-
			-	-
			-	-
			-	-
			-	-
			-	-
			-	-

	Details	Fund to which liability relates	Amount due (optional)	When due (optional)
<b>B5 Liabilities</b>		-	-	
			-	
			-	
			-	
			-	

Signed by one or two trustees on behalf of all the trustees

Signature

Print Name

Date of approval



Professor Hazel Screen

25/07/25



Financial Statements for the Year Ended 31st December 2024

Statement of Assets and Liabilities as at 31st December 2024

Monetary Assets	Unrestricted Funds	Unrestricted Designated Funds	Restricted Funds	Totals	
				Year 2023	Year 2022
PAYPAL	£17,715.00			£17,715.00	£1,428.90
BANK ACCOUNT	£117,753.00			£117,753.00	£88,176.25
Total	£135,468.00	£0.00	£0.00	£135,468.00	£89,605.15

Liabilities

				£0.00	£0.00
	£0.00	£0.00	£0.00	£0.00	£59,508.85

Approved by the Trustees on 25 July 2025

Signed

Treasurer



Hazel Screen