



Peaches Womb Cancer Trust
Annual Report and Accounts
2024-2025

Registered with the Charity Commission of England and Wales
(1190440) and the Scottish Charity Regulator (SCO54434)

Index

Contents	Page Number
Trustees' Report	3
Achievements this year	7
Financial Review	21
Plans for Future Periods	21
Independent Examiner's Report	25
Statement of Financial Activities	26
Balance Sheet	27
Notes to the Accounts	28

Appendices

1. Background to the charity
2. Biographies of Trustees, Staff and Key Volunteers

Trustees' Report 2024-2025

The Trustees present their annual report and financial statements of the charity for the year ended 31st August 2025.

The financial statements comply with the Charities Act 2011 and the Accounting and Reporting by Charities Statement of Recommended Practice applicable to charities preparing their accounts in accordance with the Financial Reporting Standard applicable in the UK and the Republic of Ireland (FRS 102) effective 1st January 2019.

Reference and administrative information

Charity Name: Peaches Womb Cancer Trust

Charity Number: 1190440 (England and Wales) SC054434 (Scotland)

Peaches Womb Cancer Trust is an independent charitable trust.

Trustees

The Trustees and officers serving during the year and since the year end were as follows:

- Prof. Emma Crosbie (President)
- Dr Eleanor Jones (Chair 1/7/2025 - present, Vice Chair 1/7/2024-30/6/2025)
- Dr Helen Clarke (Chair 1/7/2024-30/06/2025 and Vice Chair 1/7/2025 – present)
- Dr Helena O'Flynn (Vice Chair 1/7/2025 – present)
- Sharon Senn (Treasurer)
- Dr Chloe Barr
- Debby Nott
- Malcom Pike

Paid staff

- Julia Hewer, Operations Executive (from 2/1/25)
- Julia Benning, Marketing and Communications Manager
- Catherine Kennedy, Clinical Nurse Specialist (from 7/4/25)

Registered Office

Clarke Nicklin House, 4 Brooks Drive, Cheadle Royal Business Park, Cheadle, Cheshire,
SK8 3TD

Independent Examiners:

Clarke Nicklin
Clarke Nicklin House
4 Brooks Drive
Cheadle Royal Business Park
Cheadle
Cheshire
SK8 3TD

Solicitors:

Addleshaw Goddard LLP
Milton Gate
60 Chiswell Street
London
EC1Y 4AG

Bankers:

CAF Bank
25 Kings Hill Avenue
Kings Hill
West Malling
Kent
ME19 4JQ

www.peachestrust.org

Email: admin@peachestrust.org

Structure, Governance and Management

Peaches Womb Cancer Trust is a Charitable Incorporated Organisation (CIO), registered with the Charity Commission of England and Wales (no: 1190440) and the Scottish Charity Regulator (no: SCO54434). It was established on 16th July 2020 and officially launched on 1st September 2020. This is the fourth set of accounts the charity has prepared, and this set of accounts covers the period from 1st September 2024 to 31st August 2025.

Management Structure

The charity is governed by a Board of eight Trustees, five of whom founded Peaches Womb Cancer Trust.

The Board of Trustees administers the charity. It normally meets bi-monthly and is responsible for the organisation's strategic direction and policy. The Trustees are drawn from a variety of professional backgrounds, bringing expertise and skills relevant to the charity's work. The Operations Executive works with the Board of Trustees to formulate the charity's strategic direction and oversees the day-to-day operations, supported by paid staff and volunteers. The Operations Executive also ensures that the charity delivers its specified services and that key performance indicators are met and reported to the Board.

Trustee induction and training

New Trustees are provided with a Trustee Information Pack that covers:

- The obligations of the Board of Trustees
- The main documents setting out the operational framework of the charity
- Resourcing and the current financial position as set out in the last published accounts
- Brand guidelines
- Future plans and objectives

This pack is distributed to all new Trustees along with the organisation's governing document.

Charitable Objectives

The objectives, as set out in the governing document are as follows:

“To relieve sickness and to preserve the health and improve the experience of women with or at risk of womb cancer and their families in the United Kingdom, in particular but not exclusively by; carrying out research, raising awareness and the provision of patient education and support services.”

From 1st April 2018, the Charities Act requires all charities to ensure that their charitable objectives are met and that they are for the public benefit. The Charity Commission in its “Charities and Public Benefit” Guidance states that there are two key principles that must be met:

1. There must be an identifiable benefit
2. The benefit must be for the public or a section of the public.

The Trustees have paid due regard to guidance issued by the Charity Commission in deciding what activities the charity should undertake. The Trustees are satisfied that the aims and objectives of the charity and the activities reported in this Annual Report meet these principles.



Activities and Achievements

The year 2024-25 has been another key year of achievements and development for Peaches Womb Cancer Trust. We have been innovative, creative and flexible. We continue to implement our organisational strategy, putting into practice plans that ensure that we remain a sustainable, trusted and focused organisation for everyone living with, beyond, or at risk of, womb cancer.

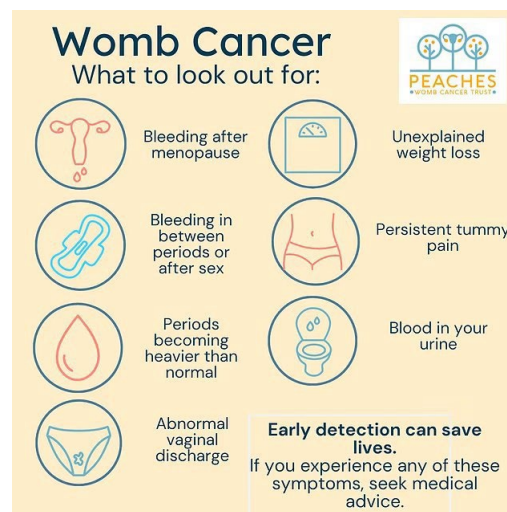
Awareness

This year we repeated our YouGov survey in preparation for our Womb Cancer Awareness Month activity.

There were 2187 respondents to the survey.

- 28% of respondents had never heard of womb cancer.
- 38% of respondents did not know that womb cancer was the same as uterine or endometrial cancer.
- 24% of respondents knew that cervical screening does not detect womb cancer.

While we are encouraged that there has been a marginal increase in awareness of the disease (2024's survey showed that 34% of respondents had never heard of womb cancer), these results highlight the scale of the task ahead of us if we are to ensure that those at risk of womb cancer are informed and aware of the disease, and empowered to engage with the support available.



Printed assets

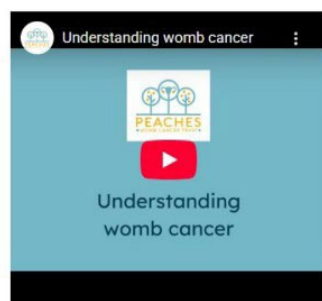
We have invested in new printed materials; an A5 leaflet to raise awareness of signs and symptoms, and a range of banners to draw attention to our organisation and the services and support that we have available. This year vinyl banners have been displayed at a golf course, pull-up banners at conferences and tabletop displays at a Women of the Year event, amongst many other locations.

These assets have enabled us to attract attention and direct traffic to our social media accounts and website. They have been funded by community fundraising, and we are grateful for every donation that allows us to invest in our organisation and spread our message further.

Website and social media

We have been very pleased to see our online presence grow over the last twelve months, enabling us to reach more people with our key messages. As of 31st August 2025, we had a total social media audience of 3786 across all channels, were sending our monthly newsletter to more than 450 people, and a monthly average of 1300 visitors to our website - <http://peachestrust.org/> Find us on [Facebook](#) [Instagram](#) & [LinkedIn](#)

We have also continued to expand our presence on YouTube, following the launch of our support and information videos in October 2024. These videos have been accessed by individuals impacted by womb cancer and healthcare professionals, and our subscriber base has increased by more than 400%.



**Want to know
more about
womb cancer?**

Watch our video.

www.peachestrust.org/get-support/support-videos



Womb Cancer Awareness Month, June 2025

Womb Cancer Awareness Month is always a valuable opportunity to talk about our work and mission, and throughout this month we shared awareness-raising materials across social media with education pieces focusing on dispelling common myths and misconceptions around womb cancer.

We were delighted that our Signs and Symptoms asset was picked up by the Daily Mail online and that we were featured as Charity of the Month in Simply Knitting magazine, thanks to the work of our marketing and communications manager. In addition to this, we were interviewed for the Word on Health podcast, which has a reach of more than 1 million listeners.

The International Gynecological Cancer Society (IGCS) shared and liked Peaches' posts in their global campaign: Uterine (Womb) Cancer Awareness Month, and we were delighted to be featured in their international round up. Our volunteer, Karen, took part in their 'Jumping for June' campaign, while promoting Peaches at the British Association of Gynaecological Pathologists (BAGP) meeting held in Belfast. We were grateful for Karen's time and support at this event, which helped raise awareness of Peaches' services and activities among healthcare professionals in Northern Ireland.

British Gynaecological Cancer Society Annual Scientific Meeting, July 2025

Julia H and Cath Kennedy (Clinical Nurse Specialist, CNS) represented Peaches at the Annual Scientific Meeting of the British Gynaecological Cancer Society (BGCS) in London. Our exhibition stand, which included an interactive map of contacts, attracted significant interest from healthcare professionals involved in treating and supporting individuals with womb cancer. We were delighted to be part of the panel engaging with CNSs at the event, focusing on support for families and caregivers to those with gynaecological cancer. Attending this event also provided a valuable opportunity to network with other charities working in the gynae-oncology space, stay up to date with the latest technology in gynaecological cancer detection and treatment, and attend workshops and seminars that inform our work and development. We would like to thank BGCS for their continued support of Peaches!

Support for those living with and beyond womb cancer

We believe that we have a key role in supporting people after their diagnosis of womb cancer, empowering and informing them as they progress along their treatment pathway. We remain committed to providing valuable, patient-centred resources for those affected by womb cancer.

Historically, our support offer was only possible thanks to Anne volunteering her time and clinical expertise. In April 2025, we were able to significantly increase our capacity to offer support thanks to a grant from Merck Sharp & Dohme (MSD). This funding has allowed us to recruit a paid Clinical Nurse Specialist, Cath.



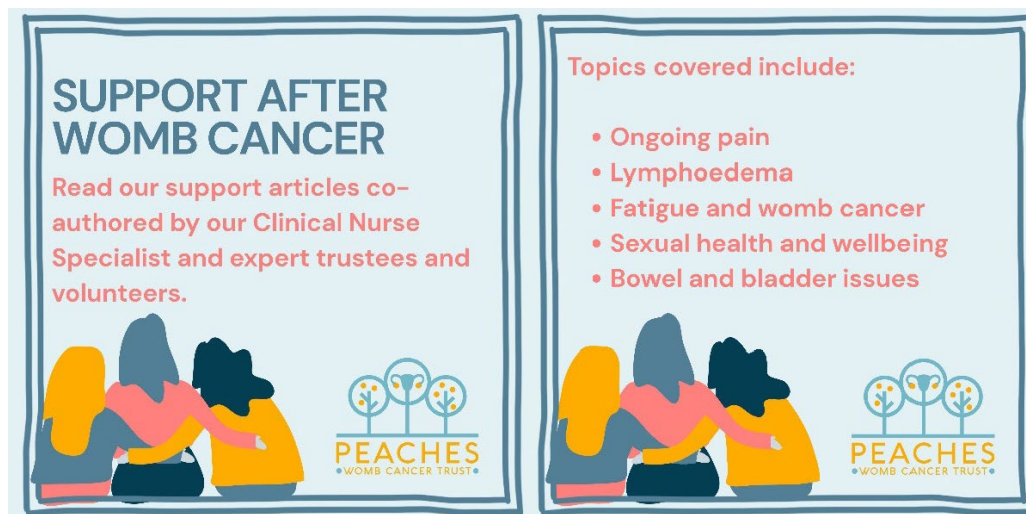
Peer support is key for many, and our monthly online Peaches coffee mornings continue to be a successful way to deliver this. This year we have extended the offer by establishing an online Evening Support Group. These online get-togethers aim to provide a safe space for those affected by womb cancer and create an opportunity to meet others with similar experiences, to talk and listen, and to share stories and tips. Each meeting is different and is driven by the attendees and the topics they would like to discuss. Both meetings are regularly oversubscribed. Thanks go to Cath and Anne (Peaches' volunteer and Clinical Nurse Specialist in Gynaecological Oncology) for facilitating these events as well as all those who dial in and contribute.

We would also like to thank our online Facebook community. This closed support group came into existence in June 2025 and quickly grew to have more than 80 members. It is here that those who have been directly impacted by womb cancer share experiences and support each other. This forum was established by Cath in her role as Peaches' CNS, and she continues to facilitate this welcoming and supportive space.

“To find a place where you suddenly realise that you’re not alone is hugely important.”

Peaches' coffee morning attendee, March 2025

This year, we established a monthly expert webinar programme and continued to develop our library of support articles in response to suggestions from stakeholders and with the support of experts, including Peaches' trustees and volunteers. These articles are published on our website, signposted to in our newsletter and social media, and are sent out following requests to our support email address (support@peachestrust.org). From the feedback received, we know that they are making a difference – informing, supporting and reducing the anxiety felt by those living with and beyond a womb cancer diagnosis.



We know that it is also helpful to have accessible information available at a time that suits the individual, and we were proud to launch our series of support videos which are hosted on our website and YouTube channel. The videos provide accessible information about womb cancer diagnosis, treatment and follow-up and we have received a great deal of positive feedback about them – from patients, carers and healthcare professionals. Our sincere thanks go to everyone affected by womb cancer who contributed their insights and feedback throughout the process. We are deeply grateful to GlaxoSmithKline (GSK) for their funding support; to COUCH Health for their generosity, commitment and expertise in producing the filmed videos; to Amrita Robertson for her thoughtful collaboration and outstanding animations; and to Helen W, Anne and Julia B for their invaluable efforts in bringing all elements of the project together.

“Thank you for all the good work you do.

I really appreciate it.”

Participant in ‘What is Womb Cancer’ session, June 2025.

Our investment in new printed material has further extended our support offer. Our support booklet contains QR codes linking to the videos, and we now have leaflets designed for healthcare professionals which outline our support and provide a link to order materials to pass on to their patients.



Research

This year, Peaches has contributed significant financial resources to support several pieces of research. We are currently co-funding a piece of research, led by Dr, Caitlin Fierheller, alongside Wellbeing of Women. This research began in July 2025 and is focused on serous endometrial cancer risk and role of risk-reducing hysterectomy in BRCA carriers. The study team is recruiting 500 women with serous endometrial cancer across the UK and will offer *BRCA* testing at home, through a novel saliva-based app developed by the team. This includes counselling available via a helpline. Patients will help develop the app and patient facing materials.

We continue to offer bursaries to Early Career Researchers. One such award was made to Maya Whittaker whose research on the current diagnostic pathway for postmenopausal bleeding in the UK, and how the accuracy of diagnostic investigations differs among women of different ethnicities was presented at the ASGO Annual Scientific Meeting, May 2025.



We have worked with The Eve Appeal, British Gynaecological Cancer Society, health Data Insight and The British Association of Gynaecological Pathologists to jointly fund the **Endometrial Cancer Audit Pilot (ECAP)**. This pilot is running for two years and will perform meaningful analysis of routinely collected data to publish a range of data outputs on endometrial cancer throughout that time.

The baseline report was published in April 2025 and can be accessed here. - <https://digital.nhs.uk/ndrs/our-work/ncras-partnerships/endometrial-cancer-audit-pilot>. The ECAP has been established with the aim of exploring the feasibility of a

national clinical audit in endometrial cancer of information that is routinely submitted by gynae-oncology teams across England. We believe this type of audit is invaluable in highlighting differences in diagnosis, treatment and survivorship which can lead to challenge and change, improving experiences and outcomes for those affected by womb cancer in the future.

“Analysis of data showed that the percentage of women who had died from their endometrial cancer was highest among women in the Black ethnic group. This difference warrants further investigation.”

(p.32, ECAP, NDRS and NHS England, 2025).

Peaches Patient Voices (PPV) continues to bring together people affected by womb cancer and researchers, ensuring that studies reflect the real priorities of patients and their families. These collaborations are helping research deliver meaningful improvements for those living with and beyond womb cancer, and we are proud to support such vital, impactful work. This would not be possible without Helen White, one of our expert volunteers and we are extremely grateful for the commitment and compassion she shows to all involved in PPV, building and facilitating quality relationships and opportunities for involvement.

Over the past year, nineteen new members joined PPV, bringing the total number of people who have been part of the group since its inception to 106. Collectively, our members have contributed to a wide range of UK-led research projects. This has included reviewing study protocols and patient-facing information, giving feedback on a lifestyle intervention to support health and wellbeing after treatment, and helping to raise awareness of womb cancer.

“It felt empowering to be able to share my point of view and experience, like it was helping something good to come out of what has been a trying time.”

Peaches Patient Voices Member, February 2025

We provided letters of support for several research funding applications and were thrilled to hear that a number of projects we supported were successfully awarded funding. These included studies focused on supporting people with womb cancer to be physically active, developing a cancer-preventing ‘vaccine’ for those with Lynch syndrome, exploring preferences and experiences of care locations for people investigated or treated for gynaecological cancers, and the Gynaecological Radiotherapy Consent Enhancement (GRACE) project.

We were especially pleased to see PPV member **Helen Pritchard** appointed as Patient Researcher for the GRACE project, following a call circulated through PPV. This important programme of work aims to improve how people make decisions about consent for radiotherapy in gynaecological cancer. Helen, in turn, kindly shared the opportunity with PPV members to join the study’s public and patient involvement (PPI) group—an inspiring example of how PPI can come full circle.

Nine PPV members, each bringing their own lived experience of womb cancer, also reviewed the *Fast Facts* booklet on endometrial cancer published by Karger. Their thoughtful and honest feedback shaped the booklet into a clear, inclusive resource that will support others for years to come. We are enormously grateful for their time and generosity.

A highlight of the year was PPV being shortlisted for the **Third Sector Volunteer Team of the Year Award**. This recognition is a testament to the dedication of all our members, past and present—their voices, their courage, and their willingness to share personal experiences so that the future is brighter for those who follow. We are extremely thankful to the Third Sector for acknowledging the powerful impact of PPV.

Alongside these achievements, we were deeply saddened by the loss of PPV member **Sue Woodburn**. She gave so much of her time and energy, contributing brilliantly to the NICE appraisal of dostarlimab in the first-line setting. When dostarlimab was later recommended for NHS use, Sue shared her story widely, appearing in a live interview with Dan Walker on Channel 5 News and in a moving ITV Border film. Her courage, generosity, and unwavering commitment leave an enduring legacy, and she will be greatly missed.

Advocating for those affected by womb cancer

Having taken part in previous Health Technology Assessments (HTAs) as a Patient Expert, we are delighted that Grace Teeling has joined Peaches as a volunteer leading our policy and advocacy work, supported by Debby Nott and Helen White. Over the past year, Peaches has contributed to a number of HTAs, some of which are still ongoing. This has been an exceptionally busy year, reflecting the welcome influx of new treatments being brought before the National Institute for Health and Care Excellence (NICE) and the Scottish Medicines Consortium (SMC), driven by an increasing body of evidence from clinical trials in womb cancer.

In May 2025, Peaches was pleased to see NICE recommend the immunotherapy dostarlimab, in combination with chemotherapy, as a first-line treatment for people with a specific subtype of advanced or recurrent womb cancer called mismatch repair deficient (dMMR). This decision means the treatment can now be routinely offered across the NHS in England, having previously only been available through the Cancer Drugs Fund — marking an important step forward.

In June 2025, we welcomed the news that NICE had also recommended the immunotherapy durvalumab with chemotherapy as a combined first-line treatment for advanced or recurrent dMMR womb cancer. However, we were concerned that the combination of durvalumab and chemotherapy with another medicine, olaparib, was not recommended for the larger group of people with the proficient mismatch repair (pMMR) subtype, and that this decision may further widen inequalities in access to treatment for some groups of patients. We await the outcome of an appeal against this guidance, scheduled for September 2025.

In July 2025, Peaches was delighted to hear that the SMC had recommended another immunotherapy, pembrolizumab, with chemotherapy as a first-line treatment for both dMMR *and* pMMR advanced or recurrent womb cancer. This was a landmark decision, as it represents the first time a first-line treatment has been made available to people with both subtypes of womb cancer. Providing earlier access to this innovative treatment addresses a significant unmet need for people with pMMR womb cancer, who until now faced the reality of very limited treatment options. This milestone was followed by further welcome news in August, when NICE recommended the same drug combination for routine use across the NHS in England.

The successful outcomes of these assessments would not have been possible without the invaluable contributions of Peaches Patient Voices (PPV) members, whose powerful testimonies and lived experiences played a crucial role in informing

our evidence submissions. We are especially grateful to those who were willing to share their stories and experiences directly at NICE committee meetings, offering an authentic and powerful voice for people affected by womb cancer. Collectively, the input of PPV members provided meaningful and persuasive contributions to the decision-making processes of NICE and SMC committees.

Peaches also took part in the Department of Health and Social Care's call for evidence to inform the National Cancer Plan for England. Peaches' response can be downloaded here: [Peaches Womb Cancer Trust response to DSHC's consultation on Shaping the National Cancer Plan.](#)

“Peaches Womb Cancer Trust has welcomed the opportunity to contribute to appraisals of durvalumab and durvalumab with olaparib in both Scotland and England.

We could not have done so without the contributions of Peaches Patient Voices ... whose powerful testimonies and experiences informed our submissions”

Dr. Eleanor Jones, Chairperson of Peaches Womb Cancer Trust

Organisation

Staffing

This year saw a change in leadership for the operational team, as Louise Brimble left the organisation in October 2024 and Julia Hower assumed leadership in January 2025. We were delighted to be able to grow our staff team, in line with our strategic plan, when Cath joined the organisation in April as our CNS. She leads the support services supported by our volunteer CNS Anne. Our board of Trustees also saw some changes. We welcomed Sharon, our new treasurer alongside Debby, who brings more than 30 years of healthcare experience to the organisation in addition to her own following a diagnosis of, and treatment for, womb cancer in 2020.

As the organisation grows, we remain committed to ensuring its sustainability whilst developing policies, processes and procedures that will increase our efficiency and effectiveness. This has included the adoption of Peaches' first customer relationship management database, thanks to a grant from the Albert Hunt Trust.

We continue to work to our strategic plan, staying true to our mission of working towards a better life for everyone affected by womb cancer. We are pleased to be recognised by the Scottish Charity Regulator, and plan to develop services in Scotland alongside our work in Wales and Northern Ireland, in partnership with our supporters in these countries.

Fundraising and Income Generation

Fundraising by Peaches' supporters

Our community of supporters and fundraisers continues to be innovative, creative, dedicated and engaged with our organisation. Over this financial year, our community fundraisers have generated more invaluable unrestricted income for us than ever, exceeding last year's total. These funds have come from one-off walks and runs, sky dives, marathons, climbs and bike rides. We are also grateful for the more sustained and varied campaigns such as those organised by the friends, family and colleagues of Jo Shrimpton-Davies whose fundraising efforts have brought in more than £20,000 to support our work, all in memory of Jo.

Peaches fundraising events

A number of our supporters took part in Walking for Wombs as part of Womb Cancer Awareness Month. Not only did this generate funds for the organisation, but it also raised awareness, as those walking (or running, or climbing!) wore our T-shirts, vests and ribbons. Thank you to Watford Grammar School for Girls whose students completed a charity mile for us, raising almost £1000.



Grant funding

Despite an increasingly challenging grant and trust fundraising landscape affecting all voluntary and community organisations, we have had several successful applications this year. These grants and gifts support both project and core work and are key to ensuring the organisation functions effectively.

Thank you to

- MSD - Support work
- The Charity Service – Support work
- People's Postcode Trust - Organisation
- Albert Hunt Foundation – Organisation
- The Marsh Charitable Trust – Core costs

Charity of the Year Partnerships

We are grateful to the ladies at the Staffordshire Soroptimists, who chose Peaches as their Charity of the Year. The Club has raised more than £3,000 from their events, including a sponsored walk.



We have also received valuable corporate support and welcome donations from Consumer Scotland, Image Office Cleaning and LettUs Grow.

In memory donations

We have continued to partner with MuchLoved this year. This online platform allows us to provide a dedicated space for those who have lost loved ones to womb cancer. Friends, family and colleagues can pay their respects and share memories through a MuchLoved tribute, and, if they wish, make a donation to Peaches in their memory.

We are so appreciative of every pound that comes to our charity through those who have benefited from our support. We could not undertake our work without the generous donations and hard work of our supporters. We would like to say a massive thank you to all who have held events, challenged themselves and donated.

We would also like to thank the increasing number of supporters who donate to Peaches monthly through direct debit. This regular income is appreciated as it helps us plan our activity. Regular gifts can be set up here –

<https://cafdonate.cafonline.org/14441#!/DonationDetails>

Financial Review

The accounts have been prepared in accordance with the accounting policies set out in note 1 to the accounts and comply with the charity's governing document, the Charities Act 2011 and the Statement of Recommended Practice, "Accounting and Reporting by Charities", issued in March 2005.

As shown in the Statement of Accounts, Peaches Womb Cancer Trust's income for this fourth year has been predominantly from community fundraising and from grants and trusts. We are very grateful to all of those who chose to donate or fundraise for us and to the organisations who generously gave us grants.

For Peaches Womb Cancer Trust to grow, more human resources in the form of both volunteers and employees are needed. Our primary focus has been, and continues to be, obtaining sufficient resources to fund our next employees. Our secondary financial focus is funding materials that are representative, inclusive and accessible for everyone affected by womb cancer.

Risk Management

The Trustees have assessed the major risks to which the charity is exposed and are satisfied that systems are in place to mitigate exposure to the major risks. An up-to-date risk register and review of policies are maintained and regularly reviewed.

Plans for 2025-2026

We will continue to implement our organisational strategy, incorporating learning from the previous twelve months' activities, consolidating what has worked well whilst continuing to develop and grow sustainably. We are ambitious for our organisation, our team of staff and volunteers, and for the current and future users of our services.

We are planning a stakeholder day for October 2025 where we will discuss our operational and strategic priorities for the next twelve months. We will be focusing on increasing the diversity and cultural competency of the organisation, across all our strategic pillars, looking at how we can reduce the health inequalities experienced by those affected by womb cancer. We will do this with the support of partners across the Voluntary, Community, Faith and Social Enterprise (VCFSE) sector such as OUTpatients, Resolve Poverty and From Me to You, using the data and evidence coming from communities, along with the outcome report from the BGCS Endometrial Cancer Audit Pilot.

Awareness

We will maximise the opportunities afforded to us by awareness months such as Gynaecological Cancer Awareness Month (September 2025) and Womb Cancer Awareness Month (June 2026). We will collaborate globally as part of the IGCS campaign, Gynaecological Cancer Awareness Month (September) and Menopause Awareness Month (October).

We will continue to focus on raising awareness of signs and symptoms and the support that we at Peaches are able to provide. This will include a programme of 'What is Womb Cancer?' and 'Peaches supporting you to support your patients' online training sessions, open to the public and healthcare professionals.

We will work tirelessly to ensure that our services are relevant and accessible across all communities, looking carefully at our reach and engagement and working to overcome gaps and challenges such as representation in our printed and digital assets.

We will work more closely with partners and our supporters, looking at how we can effectively and efficiently deliver awareness messages to all those at risk of womb cancer across the UK. We will start to explore different ways of raising awareness, evaluating the most impactful methods.

Support

We will extend our suite of videos with new and important content, developed in response to stakeholder feedback. We will explore the interest in, and feasibility of face-to-face groups, initially in Greater Manchester but with a view to extending the model where we have capacity and support. We will deliver a programme of expert speaker webinars in response to topics suggested by those affected by womb cancer. This will be alongside the maintenance and development of our online support offer – the groups, the closed Facebook group and our support articles. PPV members, staff, trustees and volunteers have worked in partnership with Karger Publishing on a new information resource – 'Living Well after a Diagnosis of Endometrial Cancer'. We look forward to seeing this online and in print and anticipate that it will soon become a valuable reference document for many. We will check in with our supporters and stakeholders, monitoring and evaluating our activities to ensure they achieve the intended impact and outcomes.

Research

We will invest further funds into clinical research, working alongside partners such as Wellbeing of Women and will contribute additional resources to the Endometrial Cancer Audit Pilot. Our long-term goal is to fund significant research projects with tangible outcomes; however, these are very costly. We were, therefore, absolutely delighted to be approached by a major donor whose philanthropic aspirations are to support us to develop a research fund to enable a doctoral research programme. We are excited to take this next step into research funding and are truly grateful for this gift.

We are proud to support early career researchers and will continue to offer bursaries enabling doctors and scientists to share their advances in womb cancer research at conferences both nationally and internationally.

We will continue to grow the Peaches Patient Voices community and its involvement in varied research projects, ensuring that womb cancer research remains focused on the needs of patients. We will ensure that our PPV members are supported so they can contribute meaningfully to NICE and SMC decisions about new treatments and will work towards diversifying the group's membership. Further to this, we will develop Peaches Future Voices to connect people at risk of womb cancer with researchers working on prevention, screening and early detection— an exciting new initiative for us.

Advocacy

We recognise the increasing importance of policy and advocacy and will incorporate this as an additional strategic pillar in the next revision of our strategy document.

We will continue to advocate for womb cancer patients and their loved ones on a national level to #GiveWombCancerAVoice. We will actively contribute to NICE and SMC appraisals to ensure that the experiences and perspectives of those affected by womb cancer are represented and considered. By doing so, we hope to support positive outcomes for the approval of vital new treatments. We will also maintain our active involvement with Cancer52 and other strategic organisations, using our voice to ensure that those affected by womb cancer are acknowledged and supported through national and global policy, including the NHS National Cancer Plan.

Organisation

Trustees

Over the coming year we will continue to diversify our Board, seeking Trustees with a wider skillset and different professional and personal experiences, particularly those with lived experience of health inequalities. We hope to expand the Board to support the development of our patient support services focusing on the areas not currently covered including oncology and psychological support.

Volunteers

We appreciate the value of volunteers and are deeply grateful for their support. Without them, we would not have achieved our successes. We will look to expand our volunteer team, seeking those with fundraising or patient support experience.

Employees

We will support our team of three paid employees, ensuring we have the resources to sustain their employment. We will continue to listen to our Trustees, staff members and beneficiaries as we implement our strategic plan, ensuring that financial resources on staffing are used sustainably and effectively. We will welcome a new Marketing and Communications Manager, following the resignation of Julia Benning in October 2025.

Fundraising

We will continue to support and encourage our community fundraisers, building sustainable and long-term relationships with individuals, families and teams. We will look to build new partnerships with community groups, major donors and the private sector and will facilitate new ways of giving. We will also explore the medium- and longer-term opportunities through grants and trusts, and how we may generate our own income to fund future activities.

**PEACHES WOMB CANCER TRUST
INDEPENDENT EXAMINER'S REPORT
TO THE TRUSTEES OF PEACHES WOMB CANCER TRUST**

I report to the trustees on my examination of the accounts of the charity for the year ended 1 September 2025, which are set out on pages 26 to 29.

Respective responsibilities of trustees and examiner

The charity's trustees are responsible for the preparation of the accounts in accordance with the Charities Act 2011. The charity trustees consider that the audit requirements of section 144 of the Charities Act 2011 do not apply.

It is my responsibility to:

- (i) examine the accounts under section 145 of the Charities Act 2011
- (ii) to follow the procedures laid down in the general Directions given by the Charity Commission under section 145(5)(b) of the Charities Act 2011
- (iii) To state whether particular matters have come to my attention.

Basis of independent examiner's report

My examination is carried out in accordance with the general directions given by the Charity Commission. An examination includes a review of the accounting records kept by the charity and a comparison of the accounts presented with those records. It also includes consideration of any unusual items or disclosures in the accounts and seeks explanations from the trustees concerning any such matters. The procedures undertaken do not provide all the evidence that would be required in an audit, and consequently I do not express an audit opinion on the view given by the accounts.

Independent examiner's statement

In connection with my examination, no matter has come to my attention:

- (a) Which gives me reasonable cause to believe that in any material respect the requirements:
 - (i) to keep accounting records in accordance with section 130 of the Charities Act 2011
 - (ii) to prepare accounts which accord with the accounting records and comply with Regulation 8 of the 2006 Accounts Regulations (as amended) and the requirements concerning the form and content of accounts set out in the Charities (Accounts and Reports) Regulations 2008 of the Charities Act 2011;Have not been met; or
- (b) To which, in my opinion, attention should be drawn in order to enable a proper understanding of the accounts to be reached.

**Paul Mellor ACA
Clarke Nicklin LLP
Chartered Accountants
Clarke Nicklin House
Cheadle Royal Business Park
Cheadle
Cheshire
SK8 3TD
Dated: 14th November 2025**

Peaches Womb Cancer Trust

STATEMENT OF FINANCIAL ACTIVITIES (INCLUDING INCOME AND EXPENDITURE ACCOUNT) FOR THE PERIOD ENDED 1 SEPTEMBER 2025

	Notes	Total Funds 2025 £	Total Funds 2024 £
INCOMING RESOURCES			
Incoming resources from generated funds			
Donations and legacies	1	13,454	11,392
Income resources from charitable activities	2	75,117	49,659
Trading Income		25	-
Bank interest		1,375	1,342
		<hr/>	<hr/>
Total incoming resources		89,971	62,393
		<hr/>	<hr/>
RESOURCES EXPENDED	3		
Cost of generating funds			
Cost of generating voluntary income		8,281	3,425
Charitable aims - Research		21,500	-
Charitable aims - Support Videos		1,150	4,341
Charitable aims - Other		2,166	864
		<hr/>	<hr/>
Employee costs		45,428	45,902
		<hr/>	<hr/>
		78,525	54,532
		<hr/>	<hr/>
NET INCOMING RESOURCES AVAILABLE		11,446	7,861
		<hr/>	<hr/>
Governance costs	4	5,870	8,705
		<hr/>	<hr/>
Total resources expended		84,395	63,236
		<hr/>	<hr/>
NET MOVEMENT IN FUNDS		5,576	(843)
		<hr/>	<hr/>
TOTAL FUNDS CARRIED FORWARD		5,576	(843)
		<hr/>	<hr/>

Peaches Womb Cancer Trust

**BALANCE SHEET
AS AT 1 SEPTEMBER 2025**

		2025	2024
	Note	£	£
CURRENT ASSETS			
Debtors	5	-	-
Cash and bank		76,334	65,758
		<hr/>	<hr/>
		76,334	65,758
 CREDITORS: Amounts due within one year	 6	 5,000	 -
 TOTAL ASSETS LESS CURRENT LIABILITIES		 <hr/> <hr/> 71,334	 <hr/> <hr/> 65,758
 THE FUNDS OF THE CHARITY			
Brought forward funds		65,758	66,601
Movement in year		5,576	(843)
		<hr/>	<hr/>
Unrestricted funds		71,334	65,758
		<hr/>	<hr/>
 TOTAL CHARITY FUNDS		 <hr/> <hr/> 71,334	 <hr/> <hr/> 65,758
		-	-

Peaches Womb Cancer Trust

NOTES TO THE FINANCIAL STATEMENTS FOR THE PERIOD ENDED 1 SEPTEMBER 2025

1 ACCOUNTING POLICIES

Basis of preparation

The financial statements of the charity, which is a public benefit entity under FRS 102, have been prepared in accordance with the Charities SORP (FRS 102) 'Accounting and Reporting by Charities: Statement of recommended Practice applicable to charities preparing their accounts in accordance with the Financial Reporting Standard applicable in the UK and Republic of Ireland (FRS 102) (effective 1 January 2015)', Financial Reporting Standard 102 'The Financial Reporting Standard applicable in the UK and Republic of Ireland', the Charities Accounts (Scotland) Regulations 2006 and the Charities Act 2011. The financial statements have been prepared under the historical cost convention.

Income

All incoming resources are included in the statement of financial activities when the charity is entitled to the income and the amount can be quantified with reasonable accuracy.

Resources expended

Expenditure has been charged to the income and expenditure account on the accruals basis. The irrecoverable element of VAT is included with the item of expense to which it relates.

Charitable expenditure comprises these costs incurred by the charity in the delivery of its activities and services for its beneficiaries. It includes both costs that can be allocated directly to such activities and those costs of an indirect nature necessary to support them.

Governance costs include those costs associated with meeting constitutional and statutory requirements of the charity and include the fees and costs linked to the strategic management of the charity

1 DONATIONS AND LEGACIES

	2025	2024
	£	£
Direct Donations	12,732	8,499
Gift Aid	-	516
Memory Giving	722	2,377
Legacies	-	-
	13,454	11,392

Gift aid is claimed by the fundraising platforms used by the charity and is included in the Direct Donations and Legacies figure above.

2 INCOMING RESOURCES FOR CHARITABLE ACTIVITIES

	2025	2024
	£	£
Owned fundraising	100	1,872
Community fundraising	50,594	34,021
Corporate fundraising	500	2,713
Grants and trusts fundraising	23,643	10,600
Shopping fundraising	280	454
	75,117	49,659

NOTES TO THE FINANCIAL STATEMENTS FOR THE PERIOD ENDED 1 SEPTEMBER 2025

3 TOTAL RESOURCES EXPENDED

	Total 2025 £	Total 2024 £
Costs of generating funds		
Costs of generating voluntary income	8,281	3,425
Charitable aims - Research	21,500	-
Charitable aims - Support Videos	1,150	4,341
Charitable aims - YouGov Survey	1,296	864
Charitable aims - Awareness	870	-
Employee costs	45,428	45,902
Total	<u>78,525</u>	<u>54,532</u>
Governance costs		
Accountancy fees	1,140	1,134
Running costs	4,730	7,571
	<u>5,870</u>	<u>8,705</u>
	<u>84,395</u>	<u>8,705</u>
 Charitable aims - Research - this figure is broken down as follows:		
Wellbeing of Women	11,000	-
BGCS (ECAP)	10,000	-
Bursary	500	-
	<u>21,500</u>	<u>-</u>

4 TRUSTEES

None of the trustees (or any persons connected with them) received any remuneration during the period.

5 DEBTORS

	2025 £	2024 £
Trade debtors	<u>-</u>	<u>-</u>
	<u><u>-</u></u>	<u><u>-</u></u>

6 CREDITORS - Amounts due within one year

	2025 £	2024 £
Amount Due for Charitable Aims - Research	<u>5,000</u>	<u>-</u>
	<u><u>5,000</u></u>	<u><u>-</u></u>

APPENDIX 1

Background to the charity

In early 2020, a group of doctors from Saint Mary's Hospital in Manchester, all with research experience and an interest in womb cancer realised that there was no charity dedicated to those affected by womb cancer. They identified that there was a great unmet need for those affected. Womb cancer is the fourth most common cancer in women, affecting nearly 10,000 women every year in the UK and the numbers are rising. However, very few people have heard of womb cancer or know what it is. Additionally, research into womb cancer has long been under-funded compared to other gynaecological cancers such as ovarian and cervical, despite it being more common.

In September 2020, Peaches Womb Cancer Trust was established by Professor Emma Crosbie, Dr Eleanor Jones, Dr Chloe Barr, Dr Helen Clarke, Dr Helena O'Flynn and Mrs Rosemary Pike. The aim was and continues to be the improvement of the lives of those affected by womb cancer by raising awareness, supporting patients, advocating for those affected and promoting and funding research.

The name comes from the peach-coloured ribbon that represents womb cancer and was inspired by the fact that a group of those living with womb cancer refer to themselves as "Peach Sisters".



APPENDIX 2

Biographies of Trustees, staff and key volunteers

Professor Emma Crosbie, President.

Professor Crosbie is Professor of Gynaecological Oncology at the University of Manchester and consultant gynaecological surgeon at St Mary's Hospital.

Her clinical practice focuses on the surgical and fertility-sparing management of womb cancer and its precursor lesion, atypical hyperplasia. Her research into the prevention and early detection of womb cancer was recognised through a prestigious National Institute for Health and Care Research (NIHR) Clinician Scientist Fellowship award in 2013 and the Royal College of Obstetricians and Gynaecologists William Blair Bell Memorial Lectureship in 2017.

She led the James Lind Womb Cancer Alliance Priority Setting Partnership that identified the top ten most important unanswered research questions in womb cancer, according to patients, carers and healthcare professionals. She was Chair of the Endometrial Subgroup of the National Cancer Research Institute (NCRI) Gynaecology Group, Deputy Chair of the NCRI Screening, Prevention and Early Diagnosis (SPED) committee, Prevention and Early Detection Co-Lead for the Manchester NIHR Biomedical Research Centre and Chair of the Research Advisory Committee for the Eve Appeal.

Her research team, Team Womb, has won numerous accolades and awards, including the NCRI Cancer Research Excellence in Surgical Trials (CREST) award in 2019 for outstanding recruitment to surgical trials, the University of Manchester Making A Difference (2021) and PPIE (2021) Awards, the Greater Manchester Cancer Research Award (2022), and the American Association of Cancer Research Team Science Award (2024) and was Highly Commended in the BMJ Cancer Care Team of the Year Awards (2021) for embedding evidence-based Lynch syndrome testing into routine clinical practice.

Dr Eleanor Jones, Chair of Trustees (From July 2025)

Dr Jones is a Specialist Registrar in Obstetrics and Gynaecology. She undertook her medical training at the University of St Andrews and then the University of Manchester and she began her specialist training in 2015. She is the Chair of Trustees for 2025-2026.

In 2023 she completed her PhD into the early diagnosis of endometrial cancer, under the supervision of Professor Crosbie. Her research focus was the DETECT Study, a multicentre study which tested a new, less-invasive diagnostic test for endometrial cancer detection. Following this, her research has aimed to reduce the burden of invasive investigations on women with postmenopausal bleeding by identifying those who are most likely to have an underlying endometrial cancer.

Dr Helen Clarke, Deputy Chair of Trustees (Chairperson July 2024 – June 2025, Deputy Chair from July 2025)

Dr Clarke is a Subspecialty Trainee in Gynaecological Oncology at The Christie Hospital NHS Foundation Trust, Manchester. She was awarded her PhD in cancer sciences in 2023 from the University of Manchester.

Following completion of an undergraduate BSc honours in Biomedical Science in 2007, she graduated from medical school in 2012. In 2016 she was awarded a Wellbeing of Women scholarship for research based at the University of Liverpool. In 2019 she was awarded a £250,000 clinical research fellowship with Cancer Research UK, which led to her doctorate. Her research focused on a clinical trial evaluating dietary interventions and calorie restriction for the risk reduction of breast and endometrial cancers. She has also been awarded a post-doctoral research fellowship from the British Gynaecological Cancer Society-Wellbeing of Women for research into weight loss and womb cancer prevention.

Dr Helena O'Flynn, Deputy Chair of Trustees

Dr O'Flynn is a General Practitioner working in Manchester following the completion of an Academic Clinical Fellowship training programme and a Master's in Public Health.

She has an interest in the early detection of gynaecological cancers in Primary Care and women's health. She graduated from medical school at the University of

Manchester and was subsequently awarded an NIHR Doctoral Research Fellowship in 2018 and has recently completed a PhD at the University of Manchester investigating methods of early detection of endometrial cancer as well as awareness of symptoms of endometrial cancer. She is also the early diagnosis lead for gynaecological cancers at the Greater Manchester Cancer Alliance.

Sharon Senn, Treasurer (Appointed November 2024)

Sharon qualified as a Chartered Accountant with KPMG in 1986 having trained and worked in North-West offices and Auckland, New Zealand. She moved into Education in 1994, taking on the role at Sir John Deane's College, Northwich, as Assistant Principal, before becoming the first Bursar and Clerk to the Governors at Withington Girls' School, Manchester. As a member of the Senior Leadership Team, Sharon took on a broad range of roles including financial management and income generation. Throughout her career, Sharon has supported her local community by leading a lottery application for the High Legh Tennis Club.

On retirement from the full-time role in 2021, Sharon maintained her link to Withington Girls' School by becoming a Trustee of the WGS Trust (a registered charity). She is also a Non-Executive Director (NED) for Edsential Limited, a Community Interest Company, owned by Cheshire West and Chester Council & Wirral Council. The company provides key support services to the Education sector including Catering, Residential courses, Music lessons and holiday courses.

Dr Chloe Barr, Trustee

Dr Barr is a Subspecialty Trainee in gynaecological oncology within the North East Deanery. She was awarded her PhD in 2023 from the University of Manchester.

In 2010, she graduated from the University of Liverpool with MBChB honours and commenced the Obstetrics and Gynaecology specialist training programme in 2013. Her PhD research evaluated novel diagnostic and prognostic biomarkers for gynaecological malignancy.

Mr Malcolm Pike, Trustee

Malcolm joined the board in September 2022. Malcolm is a Solicitor and business advisor with over 40 years' experience in private legal practice. He is currently Chair

of Governors at Withington Girls' School, Chair of the Rugby Football League's Independent Employment Tribunal, a member of the ACAS panel of Independent Arbitrators, and Associate General Counsel – Employment (EMEA) at Associated British Foods plc.

Debby Nott, Trustee (Appointed November 2024)

Debby is a pharmacist and was diagnosed with womb cancer in 2020, just a few weeks after Peaches Womb Cancer Trust was launched.

Debby has over 30 years' experience in healthcare. Her career started with a national chain of pharmacies where she developed community-pharmacy led clinical services to support early detection of common health conditions that could be improved or managed with lifestyle changes and medication to help prevent complications from late diagnosis. The latter half of Debby's career has been spent in the pharmaceutical industry where she led a small team developing the strategies and evidence submissions for health technology assessments to improve patient access for new medicines in the NHS.

Since her diagnosis, Debby has benefitted from the support offered by Peaches Womb Cancer Trust and has been involved in a number of research projects and other patient involvement opportunities through Peaches Patient Voices.

Debby has taken a holistic approach to her own recovery, with a focus on lifestyle changes and emotional wellbeing. She is passionate about empowering others with evidence-based information and accessible tools to improve their health and quality of life.

Mr. Simon Burrows, Trustee (Resigned November 2024)

Simon is a chartered accountant, with over 40 years' experience of working in business – the last 25 years as a CFO in a range of SMOs. His family have been affected by cancer in the past, and he has 2 daughters, and is therefore very committed to the Charity's ethos and causes. He brings with him huge experience in all areas of finance, corporate governance and financial stewardship and is an invaluable point of reference for the Trustees in the financial management of Peaches.

Employees

Julia Hewer, Operations Executive (Joined Peaches January 2025)

Julia joined Peaches with a wealth of experience as a charity leader. She has worked in the VCFSE (Voluntary Community Faith and Social Enterprise) sector since graduating from the University of Manchester with a BA Econ (Hons) degree in Social Policy and Accounting. She enjoys the challenge and diversity that working in this sector brings. She is also a school governor and is committed to reducing inequality and increasing access to information and opportunities for all.

Cath Kennedy, Clinical Nurse Specialist (Joined Peaches April 2025)

Cath joined the Peaches team in April 2025. She earned her Honours degree in Nursing Studies from Manchester University in 2010 and began her career on the Gynaecology Ward at St. Mary's Hospital, Manchester. It was during this time that she developed a strong interest in oncology. Cath became a Clinical Nurse Specialist (CNS) within the Gynae-oncology service, where she worked for several years. She later pursued and completed a Master's degree in Advanced Clinical Practice, graduating with distinction in 2022.

Cath went on to work as an Advanced Clinical Practitioner (ACP) within both the Gynaecology and Gynae-oncology services at Manchester Foundation Trust (MFT). However, she ultimately realised that her true passion lay in the Clinical Nurse Specialist role, which led her to join the Peaches team.

Julia Benning, Marketing and Communications Manager (left Peaches October 25)

Julia joined Peaches in September 2023. She has delivered key Peaches campaigns, with style and a high attention to detail. She has developed clear branding guidelines too. Her role supports the dissemination of research, and she works to offer trusted patient information and support via the website and social media.

Louise Brimble, CEO (left Peaches October 2024)

Louise became Peaches CEO in September 2023. She set the foundations to help Peaches grow in the future by facilitating recruitment, establishing processes and delivering projects as well as coordinating stewardship of fundraisers.

Volunteers

Anne Lowry, Gynaecological Oncology Clinical Nurse Specialist

Anne is a nurse advisor with the charity, Target Ovarian Cancer. Anne qualified as a nurse and graduated from the University of Northumbria with BSc (Hons) in Nursing Studies in 1997. Anne has always had an interest in womb cancer. She completed her MSc in Nursing Studies in 2019 with distinction and focused the modules of this degree towards learning more about the experiences of women with womb cancer and how best to support them.

Anne has worked within the speciality of gynaecology for most of her career in a variety of roles before becoming a nurse specialist in 2007. The role allowed Anne to support women and their families who are affected by gynaecological cancers.

Anne supports the facilitation of the Peaches online peer support groups and represents Peaches at events. She responds to 'support' emails and plays a key role in the moderation of the closed Facebook group.

Helen White, Peaches Patient Voices

Helen's experience of womb cancer, combined with her passion for patient and public involvement (PPI), led her to join forces with Peaches in 2021 to establish Peaches Patient Voices, which she now leads.

Helen's interest in PPI began when she joined the Participant Panel at Genomics England in 2018 and grew further when she became the patient representative for the womb cancer research group analysing data donated by 100,000 Genomes Project participants. Since then, she has contributed to a wide range of PPI activities focused on the prevention, early detection, and treatment of womb cancer.

Her roles include membership of the Cancer Research Advocates Forum (CRAF-UK, formerly the NCRI Advocates Forum), serving as PPI lead for the RAINBO NSMP-ORANGE trial, and sitting on the Steering Group of the Gynae-oncology Trials Group UK (GTG-UK). She is also part of the 'LynchVax' PPI group and serves as a patient expert when new womb cancer treatments are considered for NHS use.

Helen has co-authored several publications, is a co-applicant on multiple research projects, and was awarded a Master's in Research in Public Health in 2022. In 2023, she was appointed Participant Panel Vice-Chair for Cancer at Genomics England.

Grace Teeling, Policy and Advocacy

Grace has been living with an advanced cancer diagnosis for the past 5 years. She is a passionate advocate for improving experiences of people living with womb cancer. She supports peaches through being an active member of our Peaches Patient Voice, providing vital contributions to technology appraisals and representing the organisation at events, delivering training and sharing expert lived experience.

Grace has worked across both academia and policy with a focus on energy and water services. She currently works in policy and advocacy for essential services, such as energy affordability.

Grace has worked on some varied and interesting roles including community participation in rural wastewater, equality in small town water supplies in Ethiopia.

Harriet Hirst

Harriet began her career as a software developer and is currently a Customer Relationship Manager Leader at Heywood Pension Technologies.

THANK YOU! THANK YOU! THANK YOU!

Donate £5 and
make a
difference



text PEACHES
to 70085

SUPPORT AWARENESS RESEARCH



Registered with the Charity Commission of England and Wales
(1190440) and the Scottish Charity Regulator (SCO54434)