

PEACHES WOMB CANCER TRUST

England & Wales · Charity number 1190440

Details

Status Registered

Legal form CIO

Registered 2020-07-16

Register [View on the Charity Commission register](#)

Contact

Address Clarke Nicklin House
4 Brooks Drive
Cheadle Royal Business Park
Cheadle
Cheshire
SK8 3TD

Phone 07907018827

Email admin@peachestrust.org

Website www.peachestrust.org

Activities

Objects: TO RELIEVE SICKNESS, TO PRESERVE THE HEALTH AND IMPROVE THE EXPERIENCE OF WOMEN WITH OR AT RISK OF WOMB CANCER AND THEIR FAMILIES IN THE UNITED KINGDOM, IN PARTICULAR BUT NOT EXCLUSIVELY BY; CARRYING OUT RESEARCH, RAISING AWARENESS AND THE PROVISION OF PATIENT EDUCATION AND SUPPORT SERVICES.

Activities: Our mission is to improve the lives of those with and at risk of womb cancer. To do this we raise money to allow us to improve public awareness of womb cancer, to support patients, to advocate for patients and to fund and promote vital research into womb cancer.

Classification

- **How:** Makes Grants To Individuals, Provides Other Finance, Provides Advocacy/advice/information, Sponsors Or Undertakes Research
- **What:** The Advancement Of Health Or Saving Of Lives
- **Who:** Other Defined Groups

Geography

- Throughout England And Wales

Finances

Period end	Income	Expenditure	Assets	Employees
2025-09-01	£89,971	£84,395	-	-
2024-09-01	£62,393	£63,236	-	-
2023-09-01	£65,529	£36,626	-	-
2022-09-01	£32,764	£10,451	-	-
2021-09-01	£19,091	£3,707	-	-

Trustees

Name	Role	Appointed
Dr Eleanor Rose Jones	Chair	2020-02-26
Dr Chloe Barr		2020-02-26
Dr Helen Clarke		2020-02-26
Dr Helena Louise O'Flynn		2020-02-26
Malcolm Pike		2022-11-28
Prof Emma Jayne Davidson		2020-02-26
Sharon Elizabeth Senn		2024-11-04

PEACHES WOMB CANCER TRUST

England & Wales - Charity number 1190440

Accounts



Peaches Womb Cancer Trust
Annual Report and Accounts
2024-2025

Registered with the Charity Commission of England and Wales
(1190440) and the Scottish Charity Regulator (SCO54434)

Index

Contents	Page Number
Trustees' Report	3
Achievements this year	7
Financial Review	21
Plans for Future Periods	21
Independent Examiner's Report	25
Statement of Financial Activities	26
Balance Sheet	27
Notes to the Accounts	28

Appendices

1. Background to the charity
2. Biographies of Trustees, Staff and Key Volunteers

Trustees' Report 2024-2025

The Trustees present their annual report and financial statements of the charity for the year ended 31st August 2025.

The financial statements comply with the Charities Act 2011 and the Accounting and Reporting by Charities Statement of Recommended Practice applicable to charities preparing their accounts in accordance with the Financial Reporting Standard applicable in the UK and the Republic of Ireland (FRS 102) effective 1st January 2019.

Reference and administrative information

Charity Name: Peaches Womb Cancer Trust

Charity Number: 1190440 (England and Wales) SC054434 (Scotland)

Peaches Womb Cancer Trust is an independent charitable trust.

Trustees

The Trustees and officers serving during the year and since the year end were as follows:

- Prof. Emma Crosbie (President)
- Dr Eleanor Jones (Chair 1/7/2025 - present, Vice Chair 1/7/2024-30/6/2025)
- Dr Helen Clarke (Chair 1/7/2024-30/06/2025 and Vice Chair 1/7/2025 – present)
- Dr Helena O'Flynn (Vice Chair 1/7/2025 – present)
- Sharon Senn (Treasurer)
- Dr Chloe Barr
- Debby Nott
- Malcom Pike

Paid staff

- Julia Hewer, Operations Executive (from 2/1/25)
- Julia Benning, Marketing and Communications Manager
- Catherine Kennedy, Clinical Nurse Specialist (from 7/4/25)

Registered Office

Clarke Nicklin House, 4 Brooks Drive, Cheadle Royal Business Park, Cheadle, Cheshire,
SK8 3TD

Independent Examiners:

Clarke Nicklin
Clarke Nicklin House
4 Brooks Drive
Cheadle Royal Business Park
Cheadle
Cheshire
SK8 3TD

Solicitors:

Addleshaw Goddard LLP
Milton Gate
60 Chiswell Street
London
EC1Y 4AG

Bankers:

CAF Bank
25 Kings Hill Avenue
Kings Hill
West Malling
Kent
ME19 4JQ

www.peachestrust.org

Email: admin@peachestrust.org

Structure, Governance and Management

Peaches Womb Cancer Trust is a Charitable Incorporated Organisation (CIO), registered with the Charity Commission of England and Wales (no: 1190440) and the Scottish Charity Regulator (no: SCO54434). It was established on 16th July 2020 and officially launched on 1st September 2020. This is the fourth set of accounts the charity has prepared, and this set of accounts covers the period from 1st September 2024 to 31st August 2025.

Management Structure

The charity is governed by a Board of eight Trustees, five of whom founded Peaches Womb Cancer Trust.

The Board of Trustees administers the charity. It normally meets bi-monthly and is responsible for the organisation's strategic direction and policy. The Trustees are drawn from a variety of professional backgrounds, bringing expertise and skills relevant to the charity's work. The Operations Executive works with the Board of Trustees to formulate the charity's strategic direction and oversees the day-to-day operations, supported by paid staff and volunteers. The Operations Executive also ensures that the charity delivers its specified services and that key performance indicators are met and reported to the Board.

Trustee induction and training

New Trustees are provided with a Trustee Information Pack that covers:

- The obligations of the Board of Trustees
- The main documents setting out the operational framework of the charity
- Resourcing and the current financial position as set out in the last published accounts
- Brand guidelines
- Future plans and objectives

This pack is distributed to all new Trustees along with the organisation's governing document.

Charitable Objectives

The objectives, as set out in the governing document are as follows:

“To relieve sickness and to preserve the health and improve the experience of women with or at risk of womb cancer and their families in the United Kingdom, in particular but not exclusively by; carrying out research, raising awareness and the provision of patient education and support services.”

From 1st April 2018, the Charities Act requires all charities to ensure that their charitable objectives are met and that they are for the public benefit. The Charity Commission in its “Charities and Public Benefit” Guidance states that there are two key principles that must be met:

1. There must be an identifiable benefit
2. The benefit must be for the public or a section of the public.

The Trustees have paid due regard to guidance issued by the Charity Commission in deciding what activities the charity should undertake. The Trustees are satisfied that the aims and objectives of the charity and the activities reported in this Annual Report meet these principles.



Activities and Achievements

The year 2024-25 has been another key year of achievements and development for Peaches Womb Cancer Trust. We have been innovative, creative and flexible. We continue to implement our organisational strategy, putting into practice plans that ensure that we remain a sustainable, trusted and focused organisation for everyone living with, beyond, or at risk of, womb cancer.

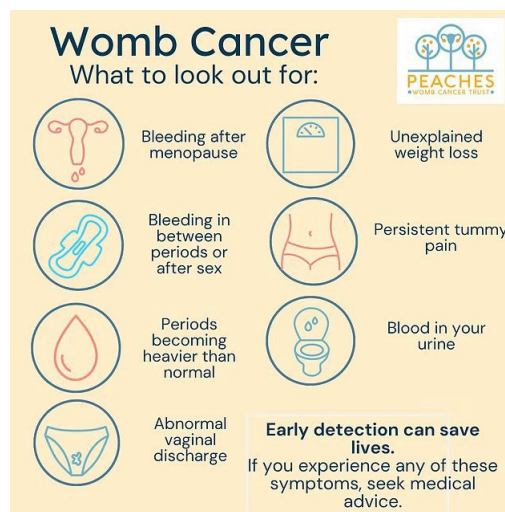
Awareness

This year we repeated our YouGov survey in preparation for our Womb Cancer Awareness Month activity.

There were 2187 respondents to the survey.

- 28% of respondents had never heard of womb cancer.
- 38% of respondents did not know that womb cancer was the same as uterine or endometrial cancer.
- 24% of respondents knew that cervical screening does not detect womb cancer.

While we are encouraged that there has been a marginal increase in awareness of the disease (2024's survey showed that 34% of respondents had never heard of womb cancer), these results highlight the scale of the task ahead of us if we are to ensure that those at risk of womb cancer are informed and aware of the disease, and empowered to engage with the support available.



Printed assets

We have invested in new printed materials; an A5 leaflet to raise awareness of signs and symptoms, and a range of banners to draw attention to our organisation and the services and support that we have available. This year vinyl banners have been displayed at a golf course, pull-up banners at conferences and tabletop displays at a Women of the Year event, amongst many other locations.

These assets have enabled us to attract attention and direct traffic to our social media accounts and website. They have been funded by community fundraising, and we are grateful for every donation that allows us to invest in our organisation and spread our message further.

Website and social media

We have been very pleased to see our online presence grow over the last twelve months, enabling us to reach more people with our key messages. As of 31st August 2025, we had a total social media audience of 3786 across all channels, were sending our monthly newsletter to more than 450 people, and a monthly average of 1300 visitors to our website - <http://peachestrust.org/> Find us on [Facebook](#) [Instagram](#) & [LinkedIn](#)

We have also continued to expand our presence on YouTube, following the launch of our support and information videos in October 2024. These videos have been accessed by individuals impacted by womb cancer and healthcare professionals, and our subscriber base has increased by more than 400%.



**Want to know
more about
womb cancer?**

Watch our video.

www.peachestrust.org/get-support/support-videos



Womb Cancer Awareness Month, June 2025

Womb Cancer Awareness Month is always a valuable opportunity to talk about our work and mission, and throughout this month we shared awareness-raising materials across social media with education pieces focusing on dispelling common myths and misconceptions around womb cancer.

We were delighted that our Signs and Symptoms asset was picked up by the Daily Mail online and that we were featured as Charity of the Month in Simply Knitting magazine, thanks to the work of our marketing and communications manager. In addition to this, we were interviewed for the Word on Health podcast, which has a reach of more than 1 million listeners.

The International Gynecological Cancer Society (IGCS) shared and liked Peaches' posts in their global campaign: Uterine (Womb) Cancer Awareness Month, and we were delighted to be featured in their international round up. Our volunteer, Karen, took part in their 'Jumping for June' campaign, while promoting Peaches at the British Association of Gynaecological Pathologists (BAGP) meeting held in Belfast. We were grateful for Karen's time and support at this event, which helped raise awareness of Peaches' services and activities among healthcare professionals in Northern Ireland.

British Gynaecological Cancer Society Annual Scientific Meeting, July 2025

Julia H and Cath Kennedy (Clinical Nurse Specialist, CNS) represented Peaches at the Annual Scientific Meeting of the British Gynaecological Cancer Society (BGCS) in London. Our exhibition stand, which included an interactive map of contacts, attracted significant interest from healthcare professionals involved in treating and supporting individuals with womb cancer. We were delighted to be part of the panel engaging with CNSs at the event, focusing on support for families and caregivers to those with gynaecological cancer. Attending this event also provided a valuable opportunity to network with other charities working in the gynae-oncology space, stay up to date with the latest technology in gynaecological cancer detection and treatment, and attend workshops and seminars that inform our work and development. We would like to thank BGCS for their continued support of Peaches!

Support for those living with and beyond womb cancer

We believe that we have a key role in supporting people after their diagnosis of womb cancer, empowering and informing them as they progress along their treatment pathway. We remain committed to providing valuable, patient-centred resources for those affected by womb cancer.

Historically, our support offer was only possible thanks to Anne volunteering her time and clinical expertise. In April 2025, we were able to significantly increase our capacity to offer support thanks to a grant from Merck Sharp & Dohme (MSD). This funding has allowed us to recruit a paid Clinical Nurse Specialist, Cath.



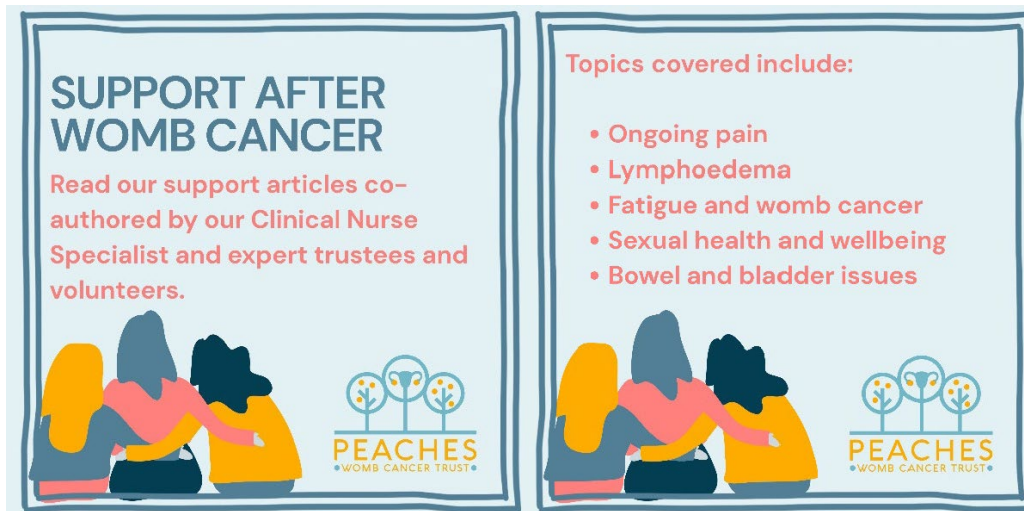
Peer support is key for many, and our monthly online Peaches coffee mornings continue to be a successful way to deliver this. This year we have extended the offer by establishing an online Evening Support Group. These online get-togethers aim to provide a safe space for those affected by womb cancer and create an opportunity to meet others with similar experiences, to talk and listen, and to share stories and tips. Each meeting is different and is driven by the attendees and the topics they would like to discuss. Both meetings are regularly oversubscribed. Thanks go to Cath and Anne (Peaches' volunteer and Clinical Nurse Specialist in Gynaecological Oncology) for facilitating these events as well as all those who dial in and contribute.

We would also like to thank our online Facebook community. This closed support group came into existence in June 2025 and quickly grew to have more than 80 members. It is here that those who have been directly impacted by womb cancer share experiences and support each other. This forum was established by Cath in her role as Peaches' CNS, and she continues to facilitate this welcoming and supportive space.

“To find a place where you suddenly realise that you’re not alone is hugely important.”

Peaches' coffee morning attendee, March 2025

This year, we established a monthly expert webinar programme and continued to develop our library of support articles in response to suggestions from stakeholders and with the support of experts, including Peaches' trustees and volunteers. These articles are published on our website, signposted to in our newsletter and social media, and are sent out following requests to our support email address (support@peachestrust.org). From the feedback received, we know that they are making a difference – informing, supporting and reducing the anxiety felt by those living with and beyond a womb cancer diagnosis.



We know that it is also helpful to have accessible information available at a time that suits the individual, and we were proud to launch our series of support videos which are hosted on our website and YouTube channel. The videos provide accessible information about womb cancer diagnosis, treatment and follow-up and we have received a great deal of positive feedback about them – from patients, carers and healthcare professionals. Our sincere thanks go to everyone affected by womb cancer who contributed their insights and feedback throughout the process. We are deeply grateful to GlaxoSmithKline (GSK) for their funding support; to COUCH Health for their generosity, commitment and expertise in producing the filmed videos; to Amrita Robertson for her thoughtful collaboration and outstanding animations; and to Helen W, Anne and Julia B for their invaluable efforts in bringing all elements of the project together.

“Thank you for all the good work you do.

I really appreciate it.”

Participant in ‘What is Womb Cancer’ session, June 2025.

Our investment in new printed material has further extended our support offer. Our support booklet contains QR codes linking to the videos, and we now have leaflets designed for healthcare professionals which outline our support and provide a link to order materials to pass on to their patients.



Research

This year, Peaches has contributed significant financial resources to support several pieces of research. We are currently co-funding a piece of research, led by Dr, Caitlin Fierheller, alongside Wellbeing of Women. This research began in July 2025 and is focused on serous endometrial cancer risk and role of risk-reducing hysterectomy in BRCA carriers. The study team is recruiting 500 women with serous endometrial cancer across the UK and will offer *BRCA* testing at home, through a novel saliva-based app developed by the team. This includes counselling available via a helpline. Patients will help develop the app and patient facing materials.

We continue to offer bursaries to Early Career Researchers. One such award was made to Maya Whittaker whose research on the current diagnostic pathway for postmenopausal bleeding in the UK, and how the accuracy of diagnostic investigations differs among women of different ethnicities was presented at the ASGO Annual Scientific Meeting, May 2025.



We have worked with The Eve Appeal, British Gynaecological Cancer Society, health Data Insight and The British Association of Gynaecological Pathologists to jointly fund the **Endometrial Cancer Audit Pilot (ECAP)**. This pilot is running for two years and will perform meaningful analysis of routinely collected data to publish a range of data outputs on endometrial cancer throughout that time.

The baseline report was published in April 2025 and can be accessed here. - <https://digital.nhs.uk/ndrs/our-work/ncras-partnerships/endometrial-cancer-audit-pilot>. The ECAP has been established with the aim of exploring the feasibility of a

national clinical audit in endometrial cancer of information that is routinely submitted by gynae-oncology teams across England. We believe this type of audit is invaluable in highlighting differences in diagnosis, treatment and survivorship which can lead to challenge and change, improving experiences and outcomes for those affected by womb cancer in the future.

“Analysis of data showed that the percentage of women who had died from their endometrial cancer was highest among women in the Black ethnic group. This difference warrants further investigation.”

(p.32, ECAP, NDRS and NHS England, 2025).

Peaches Patient Voices (PPV) continues to bring together people affected by womb cancer and researchers, ensuring that studies reflect the real priorities of patients and their families. These collaborations are helping research deliver meaningful improvements for those living with and beyond womb cancer, and we are proud to support such vital, impactful work. This would not be possible without Helen White, one of our expert volunteers and we are extremely grateful for the commitment and compassion she shows to all involved in PPV, building and facilitating quality relationships and opportunities for involvement.

Over the past year, nineteen new members joined PPV, bringing the total number of people who have been part of the group since its inception to 106. Collectively, our members have contributed to a wide range of UK-led research projects. This has included reviewing study protocols and patient-facing information, giving feedback on a lifestyle intervention to support health and wellbeing after treatment, and helping to raise awareness of womb cancer.

“It felt empowering to be able to share my point of view and experience, like it was helping something good to come out of what has been a trying time.”

Peaches Patient Voices Member, February 2025

We provided letters of support for several research funding applications and were thrilled to hear that a number of projects we supported were successfully awarded funding. These included studies focused on supporting people with womb cancer to be physically active, developing a cancer-preventing ‘vaccine’ for those with Lynch syndrome, exploring preferences and experiences of care locations for people investigated or treated for gynaecological cancers, and the Gynaecological Radiotherapy Consent Enhancement (GRACE) project.

We were especially pleased to see PPV member **Helen Pritchard** appointed as Patient Researcher for the GRACE project, following a call circulated through PPV. This important programme of work aims to improve how people make decisions about consent for radiotherapy in gynaecological cancer. Helen, in turn, kindly shared the opportunity with PPV members to join the study’s public and patient involvement (PPI) group—an inspiring example of how PPI can come full circle.

Nine PPV members, each bringing their own lived experience of womb cancer, also reviewed the *Fast Facts* booklet on endometrial cancer published by Karger. Their thoughtful and honest feedback shaped the booklet into a clear, inclusive resource that will support others for years to come. We are enormously grateful for their time and generosity.

A highlight of the year was PPV being shortlisted for the **Third Sector Volunteer Team of the Year Award**. This recognition is a testament to the dedication of all our members, past and present—their voices, their courage, and their willingness to share personal experiences so that the future is brighter for those who follow. We are extremely thankful to the Third Sector for acknowledging the powerful impact of PPV.

Alongside these achievements, we were deeply saddened by the loss of PPV member **Sue Woodburn**. She gave so much of her time and energy, contributing brilliantly to the NICE appraisal of dostarlimab in the first-line setting. When dostarlimab was later recommended for NHS use, Sue shared her story widely, appearing in a live interview with Dan Walker on Channel 5 News and in a moving ITV Border film. Her courage, generosity, and unwavering commitment leave an enduring legacy, and she will be greatly missed.

Advocating for those affected by womb cancer

Having taken part in previous Health Technology Assessments (HTAs) as a Patient Expert, we are delighted that Grace Teeling has joined Peaches as a volunteer leading our policy and advocacy work, supported by Debby Nott and Helen White. Over the past year, Peaches has contributed to a number of HTAs, some of which are still ongoing. This has been an exceptionally busy year, reflecting the welcome influx of new treatments being brought before the National Institute for Health and Care Excellence (NICE) and the Scottish Medicines Consortium (SMC), driven by an increasing body of evidence from clinical trials in womb cancer.

In May 2025, Peaches was pleased to see NICE recommend the immunotherapy dostarlimab, in combination with chemotherapy, as a first-line treatment for people with a specific subtype of advanced or recurrent womb cancer called mismatch repair deficient (dMMR). This decision means the treatment can now be routinely offered across the NHS in England, having previously only been available through the Cancer Drugs Fund — marking an important step forward.

In June 2025, we welcomed the news that NICE had also recommended the immunotherapy durvalumab with chemotherapy as a combined first-line treatment for advanced or recurrent dMMR womb cancer. However, we were concerned that the combination of durvalumab and chemotherapy with another medicine, olaparib, was not recommended for the larger group of people with the proficient mismatch repair (pMMR) subtype, and that this decision may further widen inequalities in access to treatment for some groups of patients. We await the outcome of an appeal against this guidance, scheduled for September 2025.

In July 2025, Peaches was delighted to hear that the SMC had recommended another immunotherapy, pembrolizumab, with chemotherapy as a first-line treatment for both dMMR *and* pMMR advanced or recurrent womb cancer. This was a landmark decision, as it represents the first time a first-line treatment has been made available to people with both subtypes of womb cancer. Providing earlier access to this innovative treatment addresses a significant unmet need for people with pMMR womb cancer, who until now faced the reality of very limited treatment options. This milestone was followed by further welcome news in August, when NICE recommended the same drug combination for routine use across the NHS in England.

The successful outcomes of these assessments would not have been possible without the invaluable contributions of Peaches Patient Voices (PPV) members, whose powerful testimonies and lived experiences played a crucial role in informing

our evidence submissions. We are especially grateful to those who were willing to share their stories and experiences directly at NICE committee meetings, offering an authentic and powerful voice for people affected by womb cancer. Collectively, the input of PPV members provided meaningful and persuasive contributions to the decision-making processes of NICE and SMC committees.

Peaches also took part in the Department of Health and Social Care's call for evidence to inform the National Cancer Plan for England. Peaches' response can be downloaded here: [Peaches Womb Cancer Trust response to DSHC's consultation on Shaping the National Cancer Plan.](#)

“Peaches Womb Cancer Trust has welcomed the opportunity to contribute to appraisals of durvalumab and durvalumab with olaparib in both Scotland and England.

We could not have done so without the contributions of Peaches Patient Voices ... whose powerful testimonies and experiences informed our submissions”

Dr. Eleanor Jones, Chairperson of Peaches Womb Cancer Trust

Organisation

Staffing

This year saw a change in leadership for the operational team, as Louise Brimble left the organisation in October 2024 and Julia Hewer assumed leadership in January 2025. We were delighted to be able to grow our staff team, in line with our strategic plan, when Cath joined the organisation in April as our CNS. She leads the support services supported by our volunteer CNS Anne. Our board of Trustees also saw some changes. We welcomed Sharon, our new treasurer alongside Debby, who brings more than 30 years of healthcare experience to the organisation in addition to her own following a diagnosis of, and treatment for, womb cancer in 2020.

As the organisation grows, we remain committed to ensuring its sustainability whilst developing policies, processes and procedures that will increase our efficiency and effectiveness. This has included the adoption of Peaches' first customer relationship management database, thanks to a grant from the Albert Hunt Trust.

We continue to work to our strategic plan, staying true to our mission of working towards a better life for everyone affected by womb cancer. We are pleased to be recognised by the Scottish Charity Regulator, and plan to develop services in Scotland alongside our work in Wales and Northern Ireland, in partnership with our supporters in these countries.

Fundraising and Income Generation

Fundraising by Peaches' supporters

Our community of supporters and fundraisers continues to be innovative, creative, dedicated and engaged with our organisation. Over this financial year, our community fundraisers have generated more invaluable unrestricted income for us than ever, exceeding last year's total. These funds have come from one-off walks and runs, sky dives, marathons, climbs and bike rides. We are also grateful for the more sustained and varied campaigns such as those organised by the friends, family and colleagues of Jo Shrimpton-Davies whose fundraising efforts have brought in more than £20,000 to support our work, all in memory of Jo.

Peaches fundraising events

A number of our supporters took part in Walking for Wombs as part of Womb Cancer Awareness Month. Not only did this generate funds for the organisation, but it also raised awareness, as those walking (or running, or climbing!) wore our T-shirts, vests and ribbons. Thank you to Watford Grammar School for Girls whose students completed a charity mile for us, raising almost £1000.



Grant funding

Despite an increasingly challenging grant and trust fundraising landscape affecting all voluntary and community organisations, we have had several successful applications this year. These grants and gifts support both project and core work and are key to ensuring the organisation functions effectively.

Thank you to

- MSD - Support work
- The Charity Service – Support work
- People’s Postcode Trust - Organisation
- Albert Hunt Foundation – Organisation
- The Marsh Charitable Trust – Core costs

Charity of the Year Partnerships

We are grateful to the ladies at the Staffordshire Soroptimists, who chose Peaches as their Charity of the Year. The Club has raised more than £3,000 from their events, including a sponsored walk.



We have also received valuable corporate support and welcome donations from Consumer Scotland, Image Office Cleaning and LettUs Grow.

In memory donations

We have continued to partner with MuchLoved this year. This online platform allows us to provide a dedicated space for those who have lost loved ones to womb cancer. Friends, family and colleagues can pay their respects and share memories through a MuchLoved tribute, and, if they wish, make a donation to Peaches in their memory.

We are so appreciative of every pound that comes to our charity through those who have benefited from our support. We could not undertake our work without the generous donations and hard work of our supporters. We would like to say a massive thank you to all who have held events, challenged themselves and donated.

We would also like to thank the increasing number of supporters who donate to Peaches monthly through direct debit. This regular income is appreciated as it helps us plan our activity. Regular gifts can be set up here –

<https://cafdonate.cafonline.org/14441#!/DonationDetails>

Financial Review

The accounts have been prepared in accordance with the accounting policies set out in note 1 to the accounts and comply with the charity's governing document, the Charities Act 2011 and the Statement of Recommended Practice, "Accounting and Reporting by Charities", issued in March 2005.

As shown in the Statement of Accounts, Peaches Womb Cancer Trust's income for this fourth year has been predominantly from community fundraising and from grants and trusts. We are very grateful to all of those who chose to donate or fundraise for us and to the organisations who generously gave us grants.

For Peaches Womb Cancer Trust to grow, more human resources in the form of both volunteers and employees are needed. Our primary focus has been, and continues to be, obtaining sufficient resources to fund our next employees. Our secondary financial focus is funding materials that are representative, inclusive and accessible for everyone affected by womb cancer.

Risk Management

The Trustees have assessed the major risks to which the charity is exposed and are satisfied that systems are in place to mitigate exposure to the major risks. An up-to-date risk register and review of policies are maintained and regularly reviewed.

Plans for 2025-2026

We will continue to implement our organisational strategy, incorporating learning from the previous twelve months' activities, consolidating what has worked well whilst continuing to develop and grow sustainably. We are ambitious for our organisation, our team of staff and volunteers, and for the current and future users of our services.

We are planning a stakeholder day for October 2025 where we will discuss our operational and strategic priorities for the next twelve months. We will be focusing on increasing the diversity and cultural competency of the organisation, across all our strategic pillars, looking at how we can reduce the health inequalities experienced by those affected by womb cancer. We will do this with the support of partners across the Voluntary, Community, Faith and Social Enterprise (VCFSE) sector such as OUTpatients, Resolve Poverty and From Me to You, using the data and evidence coming from communities, along with the outcome report from the BGCS Endometrial Cancer Audit Pilot.

Awareness

We will maximise the opportunities afforded to us by awareness months such as Gynaecological Cancer Awareness Month (September 2025) and Womb Cancer Awareness Month (June 2026). We will collaborate globally as part of the IGCS campaign, Gynaecological Cancer Awareness Month (September) and Menopause Awareness Month (October).

We will continue to focus on raising awareness of signs and symptoms and the support that we at Peaches are able to provide. This will include a programme of 'What is Womb Cancer?' and 'Peaches supporting you to support your patients' online training sessions, open to the public and healthcare professionals.

We will work tirelessly to ensure that our services are relevant and accessible across all communities, looking carefully at our reach and engagement and working to overcome gaps and challenges such as representation in our printed and digital assets.

We will work more closely with partners and our supporters, looking at how we can effectively and efficiently deliver awareness messages to all those at risk of womb cancer across the UK. We will start to explore different ways of raising awareness, evaluating the most impactful methods.

Support

We will extend our suite of videos with new and important content, developed in response to stakeholder feedback. We will explore the interest in, and feasibility of face-to-face groups, initially in Greater Manchester but with a view to extending the model where we have capacity and support. We will deliver a programme of expert speaker webinars in response to topics suggested by those affected by womb cancer. This will be alongside the maintenance and development of our online support offer – the groups, the closed Facebook group and our support articles. PPV members, staff, trustees and volunteers have worked in partnership with Karger Publishing on a new information resource – 'Living Well after a Diagnosis of Endometrial Cancer'. We look forward to seeing this online and in print and anticipate that it will soon become a valuable reference document for many. We will check in with our supporters and stakeholders, monitoring and evaluating our activities to ensure they achieve the intended impact and outcomes.

Research

We will invest further funds into clinical research, working alongside partners such as Wellbeing of Women and will contribute additional resources to the Endometrial Cancer Audit Pilot. Our long-term goal is to fund significant research projects with tangible outcomes; however, these are very costly. We were, therefore, absolutely delighted to be approached by a major donor whose philanthropic aspirations are to support us to develop a research fund to enable a doctoral research programme. We are excited to take this next step into research funding and are truly grateful for this gift.

We are proud to support early career researchers and will continue to offer bursaries enabling doctors and scientists to share their advances in womb cancer research at conferences both nationally and internationally.

We will continue to grow the Peaches Patient Voices community and its involvement in varied research projects, ensuring that womb cancer research remains focused on the needs of patients. We will ensure that our PPV members are supported so they can contribute meaningfully to NICE and SMC decisions about new treatments and will work towards diversifying the group's membership. Further to this, we will develop Peaches Future Voices to connect people at risk of womb cancer with researchers working on prevention, screening and early detection— an exciting new initiative for us.

Advocacy

We recognise the increasing importance of policy and advocacy and will incorporate this as an additional strategic pillar in the next revision of our strategy document.

We will continue to advocate for womb cancer patients and their loved ones on a national level to #GiveWombCancerAVoice. We will actively contribute to NICE and SMC appraisals to ensure that the experiences and perspectives of those affected by womb cancer are represented and considered. By doing so, we hope to support positive outcomes for the approval of vital new treatments. We will also maintain our active involvement with Cancer52 and other strategic organisations, using our voice to ensure that those affected by womb cancer are acknowledged and supported through national and global policy, including the NHS National Cancer Plan.

Organisation

Trustees

Over the coming year we will continue to diversify our Board, seeking Trustees with a wider skillset and different professional and personal experiences, particularly those with lived experience of health inequalities. We hope to expand the Board to support the development of our patient support services focusing on the areas not currently covered including oncology and psychological support.

Volunteers

We appreciate the value of volunteers and are deeply grateful for their support. Without them, we would not have achieved our successes. We will look to expand our volunteer team, seeking those with fundraising or patient support experience.

Employees

We will support our team of three paid employees, ensuring we have the resources to sustain their employment. We will continue to listen to our Trustees, staff members and beneficiaries as we implement our strategic plan, ensuring that financial resources on staffing are used sustainably and effectively. We will welcome a new Marketing and Communications Manager, following the resignation of Julia Benning in October 2025.

Fundraising

We will continue to support and encourage our community fundraisers, building sustainable and long-term relationships with individuals, families and teams. We will look to build new partnerships with community groups, major donors and the private sector and will facilitate new ways of giving. We will also explore the medium- and longer-term opportunities through grants and trusts, and how we may generate our own income to fund future activities.

**PEACHES WOMB CANCER TRUST
INDEPENDENT EXAMINER'S REPORT
TO THE TRUSTEES OF PEACHES WOMB CANCER TRUST**

I report to the trustees on my examination of the accounts of the charity for the year ended 1 September 2025, which are set out on pages 26 to 29.

Respective responsibilities of trustees and examiner

The charity's trustees are responsible for the preparation of the accounts in accordance with the Charities Act 2011. The charity trustees consider that the audit requirements of section 144 of the Charities Act 2011 do not apply.

It is my responsibility to:

- (i) examine the accounts under section 145 of the Charities Act 2011
- (ii) to follow the procedures laid down in the general Directions given by the Charity Commission under section 145(5)(b) of the Charities Act 2011
- (iii) To state whether particular matters have come to my attention.

Basis of independent examiner's report

My examination is carried out in accordance with the general directions given by the Charity Commission. An examination includes a review of the accounting records kept by the charity and a comparison of the accounts presented with those records. It also includes consideration of any unusual items or disclosures in the accounts and seeks explanations from the trustees concerning any such matters. The procedures undertaken do not provide all the evidence that would be required in an audit, and consequently I do not express an audit opinion on the view given by the accounts.

Independent examiner's statement

In connection with my examination, no matter has come to my attention:

- (a) Which gives me reasonable cause to believe that in any material respect the requirements:
 - (i) to keep accounting records in accordance with section 130 of the Charities Act 2011
 - (ii) to prepare accounts which accord with the accounting records and comply with Regulation 8 of the 2006 Accounts Regulations (as amended) and the requirements concerning the form and content of accounts set out in the Charities (Accounts and Reports) Regulations 2008 of the Charities Act 2011;Have not been met; or
- (b) To which, in my opinion, attention should be drawn in order to enable a proper understanding of the accounts to be reached.

**Paul Mellor ACA
Clarke Nicklin LLP
Chartered Accountants
Clarke Nicklin House
Cheadle Royal Business Park
Cheadle
Cheshire
SK8 3TD**
Dated: 14th November 2025

Peaches Womb Cancer Trust

STATEMENT OF FINANCIAL ACTIVITIES (INCLUDING INCOME AND EXPENDITURE ACCOUNT) FOR THE PERIOD ENDED 1 SEPTEMBER 2025

	Notes	Total Funds 2025 £	Total Funds 2024 £
INCOMING RESOURCES			
Incoming resources from generated funds			
Donations and legacies	1	13,454	11,392
Income resources from charitable activities	2	75,117	49,659
Trading Income		25	-
Bank interest		1,375	1,342
		89,971	62,393
RESOURCES EXPENDED			
Cost of generating funds			
Cost of generating voluntary income		8,281	3,425
Charitable aims - Research		21,500	-
Charitable aims - Support Videos		1,150	4,341
Charitable aims - Other		2,166	864
Employee costs		45,428	45,902
		78,525	54,532
NET INCOMING RESOURCES AVAILABLE		11,446	7,861
<hr/>			
Governance costs	4	5,870	8,705
Total resources expended		84,395	63,236
NET MOVEMENT IN FUNDS		5,576	(843)
<hr/>			
TOTAL FUNDS CARRIED FORWARD		5,576	(843)

Peaches Womb Cancer Trust

**BALANCE SHEET
AS AT 1 SEPTEMBER 2025**

		2025	2024
	Note	£	£
CURRENT ASSETS			
Debtors	5	-	-
Cash and bank		76,334	65,758
		<hr style="border-top: 1px solid black;"/>	<hr style="border-top: 1px solid black;"/>
		76,334	65,758
CREDITORS: Amounts due within one year	6	5,000	-
TOTAL ASSETS LESS CURRENT LIABILITIES		<hr style="border-top: 1px solid black;"/>	<hr style="border-top: 1px solid black;"/>
		71,334	65,758
THE FUNDS OF THE CHARITY			
Brought forward funds		65,758	66,601
Movement in year		5,576	(843)
		<hr style="border-top: 1px solid black;"/>	<hr style="border-top: 1px solid black;"/>
Unrestricted funds		71,334	65,758
TOTAL CHARITY FUNDS		<hr style="border-top: 1px solid black;"/>	<hr style="border-top: 1px solid black;"/>
		71,334	65,758
		-	-

Peaches Womb Cancer Trust

NOTES TO THE FINANCIAL STATEMENTS FOR THE PERIOD ENDED 1 SEPTEMBER 2025

1 ACCOUNTING POLICIES

Basis of preparation

The financial statements of the charity, which is a public benefit entity under FRS 102, have been prepared in accordance with the Charities SORP (FRS 102) 'Accounting and Reporting by Charities: Statement of recommended Practice applicable to charities preparing their accounts in accordance with the Financial Reporting Standard applicable in the UK and Republic of Ireland (FRS 102) (effective 1 January 2015)', Financial Reporting Standard 102 'The Financial Reporting Standard applicable in the UK and Republic of Ireland', the Charities Accounts (Scotland) Regulations 2006 and the Charities Act 2011. The financial statements have been prepared under the historical cost convention.

Income

All incoming resources are included in the statement of financial activities when the charity is entitled to the income and the amount can be quantified with reasonable accuracy.

Resources expended

Expenditure has been charged to the income and expenditure account on the accruals basis. The irrecoverable element of VAT is included with the item of expense to which it relates.

Charitable expenditure comprises these costs incurred by the charity in the delivery of its activities and services for its beneficiaries. It includes both costs that can be allocated directly to such activities and those costs of an indirect nature necessary to support them.

Governance costs include those costs associated with meeting constitutional and statutory requirements of the charity and include the fees and costs linked to the strategic management of the charity

1 DONATIONS AND LEGACIES

	2025	2024
	£	£
Direct Donations	12,732	8,499
Gift Aid	-	516
Memory Giving	722	2,377
Legacies	-	-
	<u>13,454</u>	<u>11,392</u>

Gift aid is claimed by the fundraising platforms used by the charity and is included in the Direct Donations and Legacies figure above.

2 INCOMING RESOURCES FOR CHARITABLE ACTIVITIES

	2025	2024
	£	£
Owned fundraising	100	1,872
Community fundraising	50,594	34,021
Corporate fundraising	500	2,713
Grants and trusts fundraising	23,643	10,600
Shopping fundraising	280	454
	<u>75,117</u>	<u>49,659</u>

**NOTES TO THE FINANCIAL STATEMENTS
FOR THE PERIOD ENDED 1 SEPTEMBER 2025**

3 TOTAL RESOURCES EXPENDED

	Total 2025 £	Total 2024 £
Costs of generating funds		
Costs of generating voluntary income	8,281	3,425
Charitable aims - Research	21,500	-
Charitable aims - Support Videos	1,150	4,341
Charitable aims - YouGov Survey	1,296	864
Charitable aims - Awareness	870	-
Employee costs	45,428	45,902
Total	78,525	54,532
 Governance costs		
Accountancy fees	1,140	1,134
Running costs	4,730	7,571
	5,870	8,705
	84,395	8,705
 Charitable aims - Research - this figure is broken down as follows:		
Wellbeing of Women	11,000	-
BGCS (ECAP)	10,000	-
Bursary	500	-
	21,500	-

4 TRUSTEES

None of the trustees (or any persons connected with them) received any remuneration during the period.

5 DEBTORS

	2025 £	2024 £
Trade debtors	-	-
	-	-

6 CREDITORS - Amounts due within one year

	2025 £	2024 £
Amount Due for Charitable Aims - Research	5,000	-
	5,000	-

APPENDIX 1

Background to the charity

In early 2020, a group of doctors from Saint Mary’s Hospital in Manchester, all with research experience and an interest in womb cancer realised that there was no charity dedicated to those affected by womb cancer. They identified that there was a great unmet need for those affected. Womb cancer is the fourth most common cancer in women, affecting nearly 10,000 women every year in the UK and the numbers are rising. However, very few people have heard of womb cancer or know what it is. Additionally, research into womb cancer has long been under-funded compared to other gynaecological cancers such as ovarian and cervical, despite it being more common.

In September 2020, Peaches Womb Cancer Trust was established by Professor Emma Crosbie, Dr Eleanor Jones, Dr Chloe Barr, Dr Helen Clarke, Dr Helena O’Flynn and Mrs Rosemary Pike. The aim was and continues to be the improvement of the lives of those affected by womb cancer by raising awareness, supporting patients, advocating for those affected and promoting and funding research.

The name comes from the peach-coloured ribbon that represents womb cancer and was inspired by the fact that a group of those living with womb cancer refer to themselves as “Peach Sisters”.



APPENDIX 2

Biographies of Trustees, staff and key volunteers

Professor Emma Crosbie, President.

Professor Crosbie is Professor of Gynaecological Oncology at the University of Manchester and consultant gynaecological surgeon at St Mary's Hospital.

Her clinical practice focuses on the surgical and fertility-sparing management of womb cancer and its precursor lesion, atypical hyperplasia. Her research into the prevention and early detection of womb cancer was recognised through a prestigious National Institute for Health and Care Research (NIHR) Clinician Scientist Fellowship award in 2013 and the Royal College of Obstetricians and Gynaecologists William Blair Bell Memorial Lectureship in 2017.

She led the James Lind Womb Cancer Alliance Priority Setting Partnership that identified the top ten most important unanswered research questions in womb cancer, according to patients, carers and healthcare professionals. She was Chair of the Endometrial Subgroup of the National Cancer Research Institute (NCRI) Gynaecology Group, Deputy Chair of the NCRI Screening, Prevention and Early Diagnosis (SPED) committee, Prevention and Early Detection Co-Lead for the Manchester NIHR Biomedical Research Centre and Chair of the Research Advisory Committee for the Eve Appeal.

Her research team, Team Womb, has won numerous accolades and awards, including the NCRI Cancer Research Excellence in Surgical Trials (CREST) award in 2019 for outstanding recruitment to surgical trials, the University of Manchester Making A Difference (2021) and PPIE (2021) Awards, the Greater Manchester Cancer Research Award (2022), and the American Association of Cancer Research Team Science Award (2024) and was Highly Commended in the BMJ Cancer Care Team of the Year Awards (2021) for embedding evidence-based Lynch syndrome testing into routine clinical practice.

Dr Eleanor Jones, Chair of Trustees (From July 2025)

Dr Jones is a Specialist Registrar in Obstetrics and Gynaecology. She undertook her medical training at the University of St Andrews and then the University of Manchester and she began her specialist training in 2015. She is the Chair of Trustees for 2025-2026.

In 2023 she completed her PhD into the early diagnosis of endometrial cancer, under the supervision of Professor Crosbie. Her research focus was the DETECT Study, a multicentre study which tested a new, less-invasive diagnostic test for endometrial cancer detection. Following this, her research has aimed to reduce the burden of invasive investigations on women with postmenopausal bleeding by identifying those who are most likely to have an underlying endometrial cancer.

Dr Helen Clarke, Deputy Chair of Trustees (Chairperson July 2024 – June 2025, Deputy Chair from July 2025)

Dr Clarke is a Subspecialty Trainee in Gynaecological Oncology at The Christie Hospital NHS Foundation Trust, Manchester. She was awarded her PhD in cancer sciences in 2023 from the University of Manchester.

Following completion of an undergraduate BSc honours in Biomedical Science in 2007, she graduated from medical school in 2012. In 2016 she was awarded a Wellbeing of Women scholarship for research based at the University of Liverpool. In 2019 she was awarded a £250,000 clinical research fellowship with Cancer Research UK, which led to her doctorate. Her research focused on a clinical trial evaluating dietary interventions and calorie restriction for the risk reduction of breast and endometrial cancers. She has also been awarded a post-doctoral research fellowship from the British Gynaecological Cancer Society-Wellbeing of Women for research into weight loss and womb cancer prevention.

Dr Helena O’Flynn, Deputy Chair of Trustees

Dr O’Flynn is a General Practitioner working in Manchester following the completion of an Academic Clinical Fellowship training programme and a Master’s in Public Health.

She has an interest in the early detection of gynaecological cancers in Primary Care and women’s health. She graduated from medical school at the University of

Manchester and was subsequently awarded an NIHR Doctoral Research Fellowship in 2018 and has recently completed a PhD at the University of Manchester investigating methods of early detection of endometrial cancer as well as awareness of symptoms of endometrial cancer. She is also the early diagnosis lead for gynaecological cancers at the Greater Manchester Cancer Alliance.

Sharon Senn, Treasurer (Appointed November 2024)

Sharon qualified as a Chartered Accountant with KPMG in 1986 having trained and worked in North-West offices and Auckland, New Zealand. She moved into Education in 1994, taking on the role at Sir John Deane's College, Northwich, as Assistant Principal, before becoming the first Bursar and Clerk to the Governors at Withington Girls' School, Manchester. As a member of the Senior Leadership Team, Sharon took on a broad range of roles including financial management and income generation. Throughout her career, Sharon has supported her local community by leading a lottery application for the High Legh Tennis Club.

On retirement from the full-time role in 2021, Sharon maintained her link to Withington Girls' School by becoming a Trustee of the WGS Trust (a registered charity). She is also a Non-Executive Director (NED) for Edsential Limited, a Community Interest Company, owned by Cheshire West and Chester Council & Wirral Council. The company provides key support services to the Education sector including Catering, Residential courses, Music lessons and holiday courses.

Dr Chloe Barr, Trustee

Dr Barr is a Subspecialty Trainee in gynaecological oncology within the North East Deanery. She was awarded her PhD in 2023 from the University of Manchester.

In 2010, she graduated from the University of Liverpool with MBChB honours and commenced the Obstetrics and Gynaecology specialist training programme in 2013. Her PhD research evaluated novel diagnostic and prognostic biomarkers for gynaecological malignancy.

Mr Malcolm Pike, Trustee

Malcolm joined the board in September 2022. Malcolm is a Solicitor and business advisor with over 40 years' experience in private legal practice. He is currently Chair

of Governors at Withington Girls' School, Chair of the Rugby Football League's Independent Employment Tribunal, a member of the ACAS panel of Independent Arbitrators, and Associate General Counsel – Employment (EMEA) at Associated British Foods plc.

Debby Nott, Trustee (Appointed November 2024)

Debby is a pharmacist and was diagnosed with womb cancer in 2020, just a few weeks after Peaches Womb Cancer Trust was launched.

Debby has over 30 years' experience in healthcare. Her career started with a national chain of pharmacies where she developed community-pharmacy led clinical services to support early detection of common health conditions that could be improved or managed with lifestyle changes and medication to help prevent complications from late diagnosis. The latter half of Debby's career has been spent in the pharmaceutical industry where she led a small team developing the strategies and evidence submissions for health technology assessments to improve patient access for new medicines in the NHS.

Since her diagnosis, Debby has benefitted from the support offered by Peaches Womb Cancer Trust and has been involved in a number of research projects and other patient involvement opportunities through Peaches Patient Voices.

Debby has taken a holistic approach to her own recovery, with a focus on lifestyle changes and emotional wellbeing. She is passionate about empowering others with evidence-based information and accessible tools to improve their health and quality of life.

Mr. Simon Burrows, Trustee (Resigned November 2024)

Simon is a chartered accountant, with over 40 years' experience of working in business – the last 25 years as a CFO in a range of SMOs. His family have been affected by cancer in the past, and he has 2 daughters, and is therefore very committed to the Charity's ethos and causes. He brings with him huge experience in all areas of finance, corporate governance and financial stewardship and is an invaluable point of reference for the Trustees in the financial management of Peaches.

Employees

Julia Hewer, Operations Executive (Joined Peaches January 2025)

Julia joined Peaches with a wealth of experience as a charity leader. She has worked in the VCFSE (Voluntary Community Faith and Social Enterprise) sector since graduating from the University of Manchester with a BA Econ (Hons) degree in Social Policy and Accounting. She enjoys the challenge and diversity that working in this sector brings. She is also a school governor and is committed to reducing inequality and increasing access to information and opportunities for all.

Cath Kennedy, Clinical Nurse Specialist (Joined Peaches April 2025)

Cath joined the Peaches team in April 2025. She earned her Honours degree in Nursing Studies from Manchester University in 2010 and began her career on the Gynaecology Ward at St. Mary's Hospital, Manchester. It was during this time that she developed a strong interest in oncology. Cath became a Clinical Nurse Specialist (CNS) within the Gynae-oncology service, where she worked for several years. She later pursued and completed a Master's degree in Advanced Clinical Practice, graduating with distinction in 2022.

Cath went on to work as an Advanced Clinical Practitioner (ACP) within both the Gynaecology and Gynae-oncology services at Manchester Foundation Trust (MFT). However, she ultimately realised that her true passion lay in the Clinical Nurse Specialist role, which led her to join the Peaches team.

Julia Benning, Marketing and Communications Manager (left Peaches October 25)

Julia joined Peaches in September 2023. She has delivered key Peaches campaigns, with style and a high attention to detail. She has developed clear branding guidelines too. Her role supports the dissemination of research, and she works to offer trusted patient information and support via the website and social media.

Louise Brimble, CEO (left Peaches October 2024)

Louise became Peaches CEO in September 2023. She set the foundations to help Peaches grow in the future by facilitating recruitment, establishing processes and delivering projects as well as coordinating stewardship of fundraisers.

Volunteers

Anne Lowry, Gynaecological Oncology Clinical Nurse Specialist

Anne is a nurse advisor with the charity, Target Ovarian Cancer. Anne qualified as a nurse and graduated from the University of Northumbria with BSc (Hons) in Nursing Studies in 1997. Anne has always had an interest in womb cancer. She completed her MSc in Nursing Studies in 2019 with distinction and focused the modules of this degree towards learning more about the experiences of women with womb cancer and how best to support them.

Anne has worked within the speciality of gynaecology for most of her career in a variety of roles before becoming a nurse specialist in 2007. The role allowed Anne to support women and their families who are affected by gynaecological cancers.

Anne supports the facilitation of the Peaches online peer support groups and represents Peaches at events. She responds to 'support' emails and plays a key role in the moderation of the closed Facebook group.

Helen White, Peaches Patient Voices

Helen's experience of womb cancer, combined with her passion for patient and public involvement (PPI), led her to join forces with Peaches in 2021 to establish Peaches Patient Voices, which she now leads.

Helen's interest in PPI began when she joined the Participant Panel at Genomics England in 2018 and grew further when she became the patient representative for the womb cancer research group analysing data donated by 100,000 Genomes Project participants. Since then, she has contributed to a wide range of PPI activities focused on the prevention, early detection, and treatment of womb cancer.

Her roles include membership of the Cancer Research Advocates Forum (CRAF-UK, formerly the NCRI Advocates Forum), serving as PPI lead for the RAINBO NSMP-ORANGE trial, and sitting on the Steering Group of the Gynae-oncology Trials Group UK (GTG-UK). She is also part of the 'LynchVax' PPI group and serves as a patient expert when new womb cancer treatments are considered for NHS use.

Helen has co-authored several publications, is a co-applicant on multiple research projects, and was awarded a Master's in Research in Public Health in 2022. In 2023, she was appointed Participant Panel Vice-Chair for Cancer at Genomics England.

Grace Teeling, Policy and Advocacy

Grace has been living with an advanced cancer diagnosis for the past 5 years. She is a passionate advocate for improving experiences of people living with womb cancer. She supports peaches through being an active member of our Peaches Patient Voice, providing vital contributions to technology appraisals and representing the organisation at events, delivering training and sharing expert lived experience.

Grace has worked across both academia and policy with a focus on energy and water services. She currently works in policy and advocacy for essential services, such as energy affordability.

Grace has worked on some varied and interesting roles including community participation in rural wastewater, equality in small town water supplies in Ethiopia.

Harriet Hirst

Harriet began her career as a software developer and is currently a Customer Relationship Manager Leader at Heywood Pension Technologies.

THANK YOU! THANK YOU! THANK YOU!

Donate £5 and
make a
difference



text PEACHES
to 70085

SUPPORT AWARENESS RESEARCH



Registered with the Charity Commission of England and Wales
(1190440) and the Scottish Charity Regulator (SCO54434)

PEACHES WOMB CANCER TRUST

England & Wales - Charity number 1190440

Accounts



Peaches Womb Cancer Trust
Annual Report and Accounts
2023-2024

Registered Charity Number: 1190440

Index

Contents	Page Number
Trustees Report	3
Achievements this year	7
Financial Review	13
Plans for Future Periods	13
Independent Examiner's Report	16
Statement of Financial Activities	17
Balance Sheet	18
Notes to the Accounts	19

Appendices

1. Background to the charity
2. Biographies of Trustees, Staff and Key Volunteers

Trustees' Report 2023–2024

The Trustees present their annual report and financial statements of the charity for the year ended 31st August 2024.

The financial statements comply with the Charities Act 2011 and the Accounting and Reporting by Charities Statement of Recommended Practice applicable to charities preparing their accounts in accordance with the Financial Reporting Standard applicable in the UK and the Republic of Ireland (FRS 102) effective 1st January 2019.

Reference and administrative information

Charity Name: Peaches Womb Cancer Trust

Charity Number: 1190440

Peaches Womb Cancer Trust is an independent charitable trust.

Trustees

The trustees and officers serving during the year and since the year end were as follows:

- Prof. Emma Crosbie (President)
- Dr Helena O'Flynn (Chair 1/9/23 – 31/8/24)
- Dr Helen Clarke (Chair 1/9/24 – present)
- Dr Eleanor Jones (Deputy Chair and Secretary)
- Sharon Senn (Treasurer), appointed 4th November 2024
- Debby Nott, appointed 4th November 2024
- Dr Chloe Barr
- Malcom Pike
- Simon Burrows, resigned 4th November 2024

Senior managers

- Louise Brimble, Chief Executive Officer (left employment 31st October 2024)
- Julia Hewer, Operations Executive (began employment 4th January 2025)

Registered Office

Clarke Nicklin House, 4 Brooks Drive, Cheadle Royal Business Park, Cheadle, Cheshire,
SK8 3TD

Independent Examiners:

Clarke Nicklin
Clarke Nicklin House
4 Brooks Drive
Cheadle Royal Business Park
Cheadle
Cheshire
SK8 3TD

Solicitors:

Addleshaw Goddard LLP
Milton Gate
60 Chiswell Street
London
EC1Y 4AG

Bankers:

CAF Bank
25 Kings Hill Avenue
Kings Hill
West Malling
Kent
ME19 4JQ

www.peachestrust.org Email: admin@peachestrust.org

Structure, Governance and Management

Peaches Womb Cancer Trust is a Charitable Incorporated Organisation (CIO), registered with the Charity Commission no: 1190440. It was established on 16th July 2020 and officially launched on 1st September 2020. This is the third set of accounts the charity has prepared, and this set of accounts covers the period from 1st September 2023 to 31st August 2024.

Management Structure

The charity is run by a Board of 8 Trustees, 5 of whom founded Peaches Womb Cancer Trust.

The Board of Trustees administers the charity. The board normally meets bi-monthly and is responsible for the strategic direction and policy of the charity. The trustees are drawn from a variety of professional backgrounds with expertise and skills relevant to the work of the charity. The Chief Executive Officer/Operations Executive is responsible for working with the Board of Trustees to formulate the strategic direction of the charity and for the day to day operations of the charity with the assistance of paid staff and volunteers. The Chief Executive Officer/Operations Executive is responsible for ensuring that the charity delivers the specified services and that key performance indicators are met and reported to the board.

Trustee induction and training

New trustees are given a Trustee Information Pack which covers:

- The obligations of the Board of Trustees
- The main documents which set out the operational framework of the charity
- Resourcing and the current financial position as set out in the last published accounts
- Brand guidelines
- Future plans and objectives

This is distributed to all new trustees along with the organisation's governing document.

Charitable Objectives

The objectives, as set out in the governing document are:

“To relieve sickness and to preserve the health and improve the experience of women with or at risk of womb cancer and their families in the United Kingdom, in particular but not exclusively by; carrying out research, raising awareness and the provision of patient education and support services.”

From 1st April 2018, the Charities Act requires that all charities ensure they meet their charitable objectives and that these are for the public benefit. The Charity Commission in its “Charities and Public Benefit” Guidance states that there are two key principles that must be met:

1. There must be an identifiable benefit
2. The benefit must be for the public or a section of the public.

The Trustees have paid due regard to guidance issued by the Charity Commission in deciding what activities the charity should undertake. The Trustees are satisfied that the aims and objectives of the charity and the activities reported on in this Annual Report meet these principles.

Activities and Achievements

2023–24 has been a key year of achievements and development for Peaches Womb Cancer Trust. We have been innovative, creative and flexible. We have spent time on developing our organisational strategy and have been excited to start to implement plans to ensure that we are the sustainable, trusted and focused organisation that we want to be– and that women with, or at risk from, womb cancer need us to be.

Awareness

A YouGov survey undertaken in 2023 highlighted that 1 in 3 people in the UK were not aware of womb cancer. This was a real call to action for Peaches, and in September 2023, we collaborated with GSK and The Eve Appeal on 'Spot Check', a 12-day campaign which focused on raising awareness of the disease.



The campaign targeted all women from 18 years of age and focused on the most common signs and symptoms. We used various avenues to distribute the message including a press release to national media, organic social media originating from Peaches and The Eve Appeal accounts, paid for social media advertisements and external advertising. We also used posters that were placed on the back of toilet doors in service stations across England which pointed to a microsite.

We were delighted that the campaign received social media support from 'influencer' doctors; Dr Aziza Sesay (29k followers) and Dr Nighat Arif (75k followers). Each made videos highlighting the signs and symptoms of womb cancer. Dr Nighat also co-created and published a feature article on GP Online, outlining how GP practices can better support patients with gynecological concerns.

There were over 13 million opportunities to see the campaign messaging and significant coverage in national and local press – a positive first step in increasing the general public’s awareness of womb cancer.

Womb Cancer Awareness Month, June 2024

The absence of knowledge regarding signs and symptoms of womb cancer was highlighted once again in a survey conducted by Peaches in 2024. Womb Cancer awareness month is a valuable opportunity to talk about our work and mission, and throughout this month we shared awareness raising materials across social media featuring some of the frequently asked questions sent to our support volunteer, alongside personal experiences included in Peaches’ case studies.

Peaches also joined with the International Gynecological Cancer Society in their global campaign: Uterine (Womb) Cancer Awareness Month. This was the second year of the initiative and included 32 partners working together over the month. Social media was directed to the Uterine Cancer Awareness Month website and traffic increased by 317.4% over the period.

British Gynaecological Cancer Society Annual Scientific Meeting, July 2024

Anne and Helen W, two of our expert volunteers, represented Peaches at the Annual Scientific Meeting of the British Gynaecological Cancer Society (BGCS) in Liverpool. Our exhibition stand attracted significant interest from healthcare professionals involved in treating and supporting individuals with womb cancer, increasing awareness of our organisation within this important community. The meeting also provided an excellent opportunity to network with other gynaecological charities, researchers, clinicians, and pharmaceutical companies. A further outcome was the invitation for Peaches to participate in the Nottingham CNS Gynaecological Cancer Open Day at Maggie’s Cancer Centre which we were delighted to attend.

Website and social media

This year, we have taken important steps to update our website, after recognizing the need to improve accessibility and navigation if visitors were to easily find the information they need. The site now regularly has more than 1,000 visitors a month. In addition to this, we relaunched our newsletter in June, updating our subscribers with the latest news and signposting to the website for more information.

<http://peachestrust.org/>

We were delighted to see return on our investment in marketing and communications, as illustrated by a steady increase in our Peaches social media followers. We currently have more than 3,000 accounts following Peaches across various platforms. Find us on [Facebook](#) [Instagram](#) [X](#) [LinkedIn](#)

GatewayC GP education package

Peaches are passionate about increasing the early diagnosis of womb cancer. It is critical that primary care professionals have the necessary knowledge and confidence to recognise symptoms and make referrals as required. GatewayC is an online early cancer diagnosis resource for GPs, clinicians and students. Dr Helena O'Flynn, Peaches trustee, provided clinical input and expertise to their endometrial cancer e-learning content and we are proud to be referenced in this resource.

Support for those living with and beyond womb cancer

We believe that we have a key role to play in supporting people after their diagnosis of womb cancer, empowering and informing them as they progress along their pathway. We remain committed to providing valuable, patient-centred resources for those affected by womb cancer.

Peer support is key for many, and our monthly online Peaches coffee mornings are a successful way to deliver this. The coffee mornings aim to provide a safe space for those affected by womb cancer and create an opportunity to meet others with similar experiences, to talk and listen, and to share stories and tips. Each meeting is different and is driven by the attendees and the items they would like to discuss. This year the coffee mornings have been oversubscribed and we have seen over 130 attendees. Considerable thanks go to Anne, Peaches' volunteer and Clinical Nurse Specialist in Gynaecological Oncology for facilitating these meet ups as well as all those who dial in and make these events what they are.

We know that it is also helpful to have accessible information available at a time that suits the individual. This year, we have made significant progress on our series of patient-centred videos, designed to support people with womb cancer at various

stages of their journey. This project was possible thanks to a generous grant from GlaxoSmithKline (GSK) and the production support of COUCH Health. The videos provide accessible information about womb cancer diagnosis, treatment and follow-up. Thanks go to Anna, Anne, Debby, Marie, and Sarah for generously sharing their personal stories on camera, to those members of our community who gave input and feedback throughout the process, from reviewing storyboards to helping create accompanying materials. We also thank Helen, Anne, Dr Chloe Barr, and Prof. Emma Crosbie for their valuable contributions during pre-production and filming.

Promoting research

Peaches Patient Voices

Peaches Patient Voices (PPV) has continued to connect individuals affected by womb cancer with researchers to ensure that their research aligns with the priorities of patients and their families, ultimately improving outcomes for those living with and beyond womb cancer. This is crucial and impactful work. Over the past year, we welcomed nine new members to PPV, and its members have actively contributed to shaping four UK-led research projects. We were also excited to highlight the benefits of joining PPV when our lead, Helen White, and long-standing member, Danni Elster, recorded an episode of the *Research Adjacent* podcast. You can listen to it [here](#).

Over the year, PPV has provided several letters of support for various research grant applications and we are thrilled that one of these (focused on how health services can better support individuals with gynaecological cancer in making informed decisions about radiotherapy) has been awarded a grant by the National Institute for Health and Care Research (NIHR). Our vice-chair has been invited to serve on the study's steering committee and PPV members will join the public and patient involvement group once the study begins.

Two PPV members were selected to share their experiences of developing womb cancer symptoms before menopause with the aforementioned GatewayC. Their valuable insights were incorporated into the e-learning course on womb cancer supporting awareness of early diagnosis of womb cancer in younger women.

Furthermore, Helen W, PPV lead represented us as one of four patient advocates from around the world at the Gynecologic Cancer InterGroup Endometrial Cancer Consensus Conference on Clinical Research, and co-authored the resulting paper: [Clinical research in endometrial cancer: consensus recommendations from the Gynecologic Cancer InterGroup \(2024\)](#).

Advocating for those affected by womb cancer

Peaches contributed to the National Institute for Health and Care Excellence (NICE) appraisal of dostarlimab (an immunotherapy drug used in combination with chemotherapy for advanced or recurrent womb cancer). In March 2024, we were thrilled to learn that it had been recommended through the Cancer Drugs Fund. This was quickly followed by the acceptance of the treatment by the Scottish Medicines Consortium (SMC), ensuring that this innovative first-line option is now available to many patients throughout the UK.

Following NICE's announcement, NHS England featured the decision in a news story. Peaches Patient Voices (PPV) member, Sue, was interviewed live by Dan Walker on Channel 5 News, appeared in a segment on ITV Border, as well as being featured in The Independent, The Sun and The Mirror and on social media platforms. This widespread coverage helped share the positive news regarding this new womb cancer treatment with a broad audience across the UK and beyond. Sue's lived experience was so valuable in adding context to this news. We are thankful to her for sharing her story in this way.

The successful outcomes of these appraisals would not have been possible without the invaluable contributions of PPV members. The powerful testimonies and lived experiences shared by them played a crucial role in informing our evidence submissions and provided valuable input to the NICE and SMC committees' decision-making processes.

Fundraising and Income Generation

Peaches fundraising events

Twenty-seven people are diagnosed with womb cancer every day in the UK. In line with this statistic, we trialed a new Peaches fundraiser in January 2024. In '2 for 27', we asked supporters to raise funds for Peaches by walking 2 miles every day for 27 days in January. While sign up was lower than we had hoped for, those who did participate were truly engaged, supported each other brilliantly and raised more than the anticipated fundraising per person. This experience has provided valuable learning for our future events.

We updated our "Peaches and Cream Tea" off the shelf activity to align with our updated branding. A volunteer for Peaches flew the flag again this year with an incredible fundraising event raising over £2500.

Charity of the Year Partnership

We are grateful to the ladies at the Whittington Golf Club, especially their Captain Anne Tracey, who chose Peaches as their Charity of the Year. The Club raised more than £8,000 from their events, including taking on the Thames Path challenge.

In memory donations

We have partnered with Much Loved this year. This online platform allows us to provide a dedicated space for those who have lost loved ones to womb cancer. Friends, family and colleagues can pay their respects and share memories on the Much Loved tributes, and make a donation to Peaches in their memory, should they wish to do so.

Grant funding

Thanks to players of People's Postcode Lottery, Peaches were awarded £10,000 by the Postcode Neighbourhood Trust. We are grateful for this grant which has helped us to achieve our charitable aims through funding core costs and supporting our ongoing development.

Fundraising by Peaches' supporters

Our community of supporters and fundraisers continues to be innovative, creative, dedicated and engaged with our organisation. Over this financial year, our community fundraisers have generated more invaluable unrestricted income for us than ever, exceeding last year's total. These funds may come from a one-off walk, danceathon, first-time marathon or bake sale or they may be generated from a more sustained and varied campaign, such as that organised and facilitated by Bev Playle and her friends and family, whose fundraising efforts have brought in more than £10,000 to support our work.

We are so appreciative of every pound that comes to our charity through those who have benefitted from our support. We could not undertake our work without the generous donations and hard work of our supporters. We would like to say a massive thank you to all who have held events, challenged themselves and donated.

Thank you to everyone who has supported Peaches, in any way over the last year, particularly those who, despite living with or beyond womb cancer, have raised money for us. Without your support, we would not be where we are today.

Financial Review

The accounts have been prepared in accordance with the accounting policies set out in note 1 to the accounts and comply with the charity's governing document, the Charities Act 2011 and the Statement of Recommended Practice, "Accounting and Reporting by Charities", issued in March 2005.

As shown in the Statement of Accounts, Peaches Womb Cancer Trust's income for this third year has been predominantly from community fundraising and grants and trusts fundraising. We are very grateful to all of those who chose to donate or fundraise for us and to the organisations who generously gave us grants, particularly GSK, The Basil Samuel Trust and the Marsh Charitable Trust.

For Peaches Womb Cancer Trust to grow and to further its aims and objectives, more human resources in the form of both volunteers and employees is needed. Our primary focus has been, and continues to be obtaining sufficient resources to fund our next employees in a sustainable way. Our secondary financial focus has been to fund a patient support project to create information videos, which are currently in development.

Risk Management

The trustees have assessed the major risks to which the charity is exposed and are satisfied that systems are in place to mitigate exposure to the major risks. An up-to-date risk register and review of policies is maintained and regularly reviewed.

Plans for 2024-2025

We asked our community to complete an online survey to help direct our plans and inform our strategic development. We will continue to implement the resulting strategy, incorporating learning from the previous twelve months' activities. We will be consolidating what has worked well whilst continuing to develop and grow sustainably. We are ambitious for our organisation, our team of staff and volunteers and for the current and future users of our services.

Awareness

We will maximise the opportunities afforded to us by awareness months such as Gynaecological Cancer Awareness Month (September 2024) and Womb Cancer Awareness month (June 2025). We will collaborate globally as part of the IGCS campaign. Gynaecological Cancer Awareness Month (September) and Menopause Awareness Month (October)

We will continue to focus on raising awareness of signs and symptoms and the support that we at Peaches are able to provide. We will work towards ensuring that our services are relevant and accessible across communities, looking carefully at our reach and engagement and working with partners to overcome gaps and challenges.

Support

We will extend our information offer through production of a suite of animated videos, supported by Prof. Naveena Singh, a renowned and highly respected gynaecological histopathologist. The videos will be hosted on our website and YouTube channel. We will also look to recruit a part-time, paid Clinical Nurse Specialist to develop our support program with funding already secured from MSD (a pharmaceutical company). We will continue to check in with our supporters and stakeholders, monitoring and evaluating our activities to ensure that they are having the impact and outcomes that we intend to achieve.

Research

We will continue to grow the Peaches Patient Voices community and its involvement in varied research projects, ensuring that womb cancer research is focused on the needs of the patients. We will ensure that our PPV members are supported and included in appraisals and research.

We will invest funds into clinical research, working alongside partners such as Wellbeing of Women. We will continue to offer research bursaries to early career researchers presenting their work into womb cancer at conferences to support the future of womb cancer research. Our long-term goal is to fund significant research projects with tangible outcomes; however, these are very costly. We plan to start a fund that will grow over the coming years to allow us to do this in the future. We will explore ways to fund entry level research posts and collaborate with other organisations.

Advocacy

We will continue to advocate for womb cancer patients and their loved ones on a national level to #GiveWombCancerAVoice. We will do everything we can as part of the NICE and SMC appraisal process to ensure that the views of those with experience of womb cancer are counted. We hope that this will increase the likelihood of a positive outcome of these appraisals and approval of these vital new treatments. We will endeavour to continue forming collaborations with strategic organisations and continue activities as a key stakeholder.

Fundraising

We will continue to support and encourage our community fundraisers, building sustainable and long term relationships with individuals, families and teams. We will look to build new partnerships with community groups and the private sector and will facilitate new ways of giving. We will also explore the medium and longer term possibilities offered by grants and trusts as we expand our salaried team and plan activities for the future.

Organisation

Trustees

Over the coming year we will seek to continue to diversify our Board to bring in a wider skillset and different experiences. We will particularly look for Trustees with marketing and fundraising experience. We hope to expand the Board to support the development of our patient support services focusing on the areas not currently covered including oncology and psychological support.

Volunteers

We know the value of volunteers and are grateful for their support as without them we would not be where we are today. We will look for volunteers with marketing, fundraising or patient support experience.

Employees

We will be increasing our paid team to three, with the addition of an employed Clinical Nurse Specialist in early 2025. We will continue to listen to our trustees, staff members and beneficiaries as we implement our strategic plan, ensuring that how we use financial resources on staffing is sustainable and effective.

Independent Examiner's Report

PEACHES WOMB CANCER TRUST INDEPENDENT EXAMINER'S REPORT TO THE TRUSTEES OF PEACHES WOMB CANCER TRUST

I report to the trustees on my examination of the accounts of the charity for the year ended 1 September 2024, which are set out on pages 17 to 20.

Respective responsibilities of trustees and examiner

The charity's trustees are responsible for the preparation of the accounts in accordance with the Charities Act 2011. The charity trustees consider that the audit requirements of section 144 of the Charities Act 2011 do not apply.

It is my responsibility to:

- (i) examine the accounts under section 145 of the Charities Act 2011
- (ii) to follow the procedures laid down in the general Directions given by the Charity Commission under section 145(5)(b) of the Charities Act 2011
- (iii) To state whether particular matters have come to my attention.


Basis of independent examiner's report

My examination is carried out in accordance with the general directions given by the Charity Commission. An examination includes a review of the accounting records kept by the charity and a comparison of the accounts presented with those records. It also includes consideration of any unusual items or disclosures in the accounts and seeks explanations from the trustees concerning any such matters. The procedures undertaken do not provide all the evidence that would be required in an audit, and consequently I do not express an audit opinion on the view given by the accounts.

Independent examiner's statement

In connection with my examination, no matter has come to my attention:

- (a) Which gives me reasonable cause to believe that in any material respect the requirements:
 - (i) to keep accounting records in accordance with section 130 of the Charities Act 2011
 - (ii) to prepare accounts which accord with the accounting records and comply with Regulation 8 of the 2006 Accounts Regulations (as amended) and the requirements concerning the form and content of accounts set out in the Charities (Accounts and Reports) Regulations 2008 of the Charities Act 2011;Have not been met; or
- (b) To which, in my opinion, attention should be drawn in order to enable a proper understanding of the accounts to be reached.



Paul Mellor ACA
Clarke Nicklin LLP
Chartered Accountants
Clarke Nicklin House
Cheadle Royal Business Park Cheadle
Cheshire
SK8 3TD
Dated: 02/04/2025

Peaches Womb Cancer Trust

STATEMENT OF FINANCIAL ACTIVITIES (INCLUDING INCOME AND EXPENDITURE ACCOUNT) FOR THE PERIOD ENDED 1 SEPTEMBER 2024

	Notes	Total Funds 2024 £	Total Funds 2023 £
INCOMING RESOURCES			
Incoming resources from generated funds			
Donations and legacies	1	11,392	8,412
Income resources from charitable activities	2	49,659	56,767
Bank interest		1,342	350
		62,393	32,764
RESOURCES EXPENDED			
Cost of generating funds			
Costs of generating voluntary income		3,425	2,458
Cost of producing support videos		4,341	
Fundraising trading: costs of goods sold			
Employee costs		45,902	28,030
Charitable aims		864	3,548
		54,532	34,037
NET INCOMING RESOURCES AVAILABLE		7,861	31,492
Governance costs	3	8,705	2,589
		63,236	36,626
NET MOVEMENT IN FUNDS		(843)	28,903
TOTAL FUNDS CARRIED FORWARD		(843)	28,903

Peaches Womb Cancer Trust

NOTES TO THE FINANCIAL STATEMENTS FOR THE PERIOD ENDED 1 SEPTEMBER 2024

1 ACCOUNTING POLICIES

Basis of preparation

The financial statements of the charity, which is a public benefit entity under FRS 102, have been prepared in accordance with the Charities SORP (FRS 102) 'Accounting and Reporting by Charities: Statement of recommended Practice applicable to charities preparing their accounts in accordance with the Financial Reporting Standard applicable in the UK and Republic of Ireland (FRS 102) (effective 1 January 2015)', Financial Reporting Standard 102 'The Financial Reporting Standard applicable in the UK and Republic of Ireland', the Charities Accounts (Scotland) Regulations 2006 and the Charities Act 2011. The financial statements have been prepared under the historical cost convention.

Income

All incoming resources are included in the statement of financial activities when the charity is entitled to the income and the amount can be quantified with reasonable accuracy.

Resources expended

Expenditure has been charged to the income and expenditure account on the accruals basis. The irrecoverable element of VAT is included with the item of expense to which it relates.

Charitable expenditure comprises these costs incurred by the charity in the delivery of its activities and services for its beneficiaries. It includes both costs that can be allocated directly to such activities and those costs of an indirect nature necessary to support them.

Governance costs include those costs associated with meeting constitutional and statutory requirements of the charity and include the fees and costs linked to the strategic management of the charity

1 DONATIONS AND LEGACIES

	2024	2023
	£	£
Direct Donations	8,499	5,927
Gift Aid	516	1,775
Memory Giving	2,377	709
Legacies		
	11,392	8,412

2 INCOMING RESOURCES FOR CHARITABLE ACTIVITIES

	2024	2023
	£	£
Owned fundraising	1,872	6,750
Community fundraising	34,021	26,033
Corporate fundraising	2,713	276
Grants and trusts fundraising	10,600	23,460
Shopping fundraising	454	248
	49,659	56,767

**NOTES TO THE FINANCIAL STATEMENTS
FOR THE PERIOD ENDED 1 SEPTEMBER 2024**

3 TOTAL RESOURCES EXPENDED

	Total 2024 £	Total 2023 £
Costs of generating funds		
Costs of generating voluntary income	3,425	2,458
Cost of producing support videos	4,341	-
Charitable aims	864	3,548
Employee costs	45,902	28,030
Total	54,532	34,037
Governance costs		
Accountancy fees	1,134	1,140
Running costs	7,571	1,449
	8,705	2,589
	63,236	36,626

4 TRUSTEES

None of the trustees (or any persons connected with them) received any remuneration during the period.

5 DEBTORS

	2023 £	2022 £
Trade debtors	-	-
	-	-

6 Creditors

	2023 £	2022 £
Accruals	-	-
	-	-

Peaches Womb Cancer Trust

BALANCE SHEET AS AT 1 SEPTEMBER 2024

		2024	2023
	Note	£	£
CURRENT ASSETS			
Debtors	5	-	-
Cash and bank		65,758	66,601
		<u>65,758</u>	<u>66,601</u>
		65,758	66,601
CREDITORS: Amounts due within one year	6	-	-
		<u>65,758</u>	<u>66,601</u>
TOTAL ASSETS LESS CURRENT LIABILITIES		<u>65,758</u>	<u>66,601</u>
THE FUNDS OF THE CHARITY			
Brought forward funds		66,601	37,694
Movement in year		(843)	28,903
Unrestricted funds		<u>65,758</u>	<u>66,601</u>
		<u>65,758</u>	<u>66,601</u>
TOTAL CHARITY FUNDS		<u>65,758</u>	<u>66,601</u>
		-	-

APPENDIX 1

Background to the charity

In early 2020, a group of doctors from Saint Mary's Hospital in Manchester, all with research experience and an interest in womb cancer realised that there was no charity dedicated to those affected by womb cancer. They identified that there was a great unmet need for those affected. Womb cancer is the fourth most common cancer in women, affecting nearly 10,000 women every year in the UK and the numbers are rising. However, very few people have heard of womb cancer or know what it is. Additionally, research into womb cancer has long been under-funded compared to other gynaecological cancers such as ovarian and cervical, despite it being more common.

In September 2020, Peaches Womb Cancer Trust was established by Professor Emma Crosbie, Dr Eleanor Jones, Dr Chloe Barr, Dr Helen Clarke, Dr Helena O'Flynn and Mrs Rosemary Pike. Our aim is to improve the lives of those affected by womb cancer by raising awareness, supporting patients, advocating for those affected and promoting and funding research. The name comes from the peach-coloured ribbon that represents womb cancer and was inspired by the fact that a group of those living with womb cancer refer to themselves as "Peach Sisters".

APPENDIX 2

Biographies of Trustees, staff and key volunteers

Professor Emma Crosbie, President.

Professor Crosbie is Professor of Gynaecological Oncology at the University of Manchester and consultant gynaecological surgeon at St Mary's Hospital.

Her clinical practice focuses on the surgical and fertility-sparing management of womb cancer and its precursor lesion, atypical hyperplasia. Her research into the prevention and early detection of womb cancer was recognised through a prestigious National Institute for Health and Care Research (NIHR) Clinician Scientist Fellowship award in 2013 and the Royal College of Obstetricians and Gynaecologists William Blair Bell Memorial Lectureship in 2017.

She led the James Lind Womb Cancer Alliance Priority Setting Partnership that identified the top ten most important unanswered research questions in womb cancer, according to patients, carers and healthcare professionals. She was Chair of the Endometrial Subgroup of the National Cancer Research Institute (NCRI) Gynaecology Group, Deputy Chair of the NCRI Screening, Prevention and Early Diagnosis (SPED) committee, Prevention and Early Detection Co-Lead for the Manchester NIHR Biomedical Research Centre and Chair of the Research Advisory Committee for the Eve Appeal.

Her research team, Team Womb, has won numerous accolades and awards, including the NCRI Cancer Research Excellence in Surgical Trials (CREST) award in 2019 for outstanding recruitment to surgical trials, the University of Manchester Making A Difference (2021) and PPIE (2021) Awards, the Greater Manchester Cancer Research Award (2022), and the American Association of Cancer Research Team Science Award (2024) and was Highly Commended in the BMJ Cancer Care Team of the Year Awards (2021) for embedding evidence-based Lynch syndrome testing into routine clinical practice.

Dr Helena O’Flynn, Chair of Trustees (September 2023 – August 2024)

Helena is a General Practitioner working in Manchester following the completion of an Academic Clinical Fellowship training programme and a Masters in Public Health.

She has an interest in the early detection of gynaecological cancers in Primary Care and women’s health. She graduated from medical school at the University of Manchester and was subsequently awarded an NIHR Doctoral Research Fellowship in 2018 and has recently completed a PhD at the University of Manchester investigating methods of early detection of endometrial cancer as well as awareness of symptoms of endometrial cancer. She is also the early diagnosis lead for gynaecological cancers at the Greater Manchester Cancer Alliance.

Dr Helen Clarke, Trustee and incoming Chair of Trustees (September 2025)

Dr Clarke is a National Institute of Health Research Academic Clinical Lecturer at the University of Manchester, balancing her research with clinical training in Gynaecological Oncology at St. Mary’s Hospital. She is the Chair of Trustees for 2024–2025.

Following completion of an undergraduate BSc in Biomedical Science in 2007, she graduated from medical school in 2012. In 2014 she commenced her specialist training in Obstetrics and Gynaecology. She was awarded an £18,000 Wellbeing of

Women entry level scholarship for research based at the University of Liverpool in 2016. In 2019 she was awarded a £250,000 clinical research fellowship with Cancer Research UK. Her research focused on a clinical trial evaluating dietary interventions and calorie restriction for the risk reduction of breast and endometrial cancers. She was awarded her PhD in cancer sciences from the University of Manchester in 2023. In 2024 she moved into her current role as an NIHR Academic Clinical Lecturer to continue her research into weight loss and pre-cancer and early endometrial cancer prevention and treatment. She was awarded a Wellbeing of Women-British Gynaecological Cancer Society Post Doctoral Fellowship in December 2024 to fund this research.

Dr Eleanor Jones, Deputy Chair of Trustees

Dr Jones is a Specialist Registrar in Obstetrics and Gynaecology. She undertook her medical training at the University of St Andrews and then the University of Manchester and she began her specialist training in 2015.

In 2023 she completed her PhD into the early diagnosis of endometrial cancer, under the supervision of Professor Crosbie. Her research focus was the DETECT Study, a large multicentre study which tested a new, less-invasive diagnostic test for endometrial cancer detection. Following on from this, her research has aimed to reduce the burden of invasive investigations on women with postmenopausal bleeding by identifying those who are most likely to have an underlying endometrial cancer.

Sharon Senn, Treasurer (Appointed November 2024)

Sharon qualified as a Chartered Accountant with KPMG in 1986 having trained and worked in North-West offices and Auckland, New Zealand. She moved into Education in 1994, taking on the role at Sir John Deane's College, Northwich, as Assistant Principal, before becoming the first Bursar and Clerk to the Governors at Withington Girls' School, Manchester. As a member of the Senior Leadership Team, Sharon took on a broad range of roles including financial management and income generation. Throughout her career, Sharon has supported her local community by leading a lottery application for the High Legh Tennis Club.

On retirement from the full-time role in 2021, Sharon maintained her link to Withington Girls' School by becoming a Trustee of the WGS Trust (a registered charity). She is also a Non-Executive Director (NED) for Edsential Limited, a Community Interest Company, owned by Cheshire West and Chester Council & Wirral Council. The company provides key support services to the Education sector including Catering, Residential courses, Music lessons and holiday courses.

Mr. Simon Burrows, Trustee (Resigned November 2024)

Simon is a chartered accountant, with over 40 years' experience of working in business – the last 25 years as a CFO in a range of SMOs. His family have been affected by cancer in the past, and he has 2 daughters, and is therefore very committed to the Charity's ethos and causes. He brings with him huge experience in all areas of finance, corporate governance and financial stewardship – and thus is an invaluable point of reference for the Trustees in the financial management of the Peaches.

Dr Chloe Barr, Trustee

Dr Barr is a subspecialty trainee in gynaecological oncology within the North East Deanery. She was awarded her PhD in 2023 from the University of Manchester.

In 2010, she graduated from the University of Liverpool with MBChB honours and commenced the Obstetrics and Gynaecology specialist training programme in 2013. Her PhD research evaluated novel diagnostic and prognostic biomarkers for gynaecological malignancy.

Debby Nott, Trustee (Appointed November 2024)

Debby is a pharmacist and was diagnosed with womb cancer in 2020, just a few weeks after Peaches Womb Cancer Trust was launched.

Debby has over 30 years' experience in healthcare. Her career started with a national chain of pharmacies where she developed community-pharmacy led clinical services to support early detection of common health conditions that could be improved or

managed with lifestyle changes and medication to help prevent complications from late diagnosis. The latter half of Debby's career has been spent in the pharmaceutical industry where she led a small team developing the strategies and evidence submissions for health technology assessments to improve patient access for new medicines in the NHS.

Since her diagnosis, Debby has benefitted from the support offered by Peaches Womb Cancer Trust and has been involved in a number of research projects and other patient involvement opportunities through Peaches Patient Voices.

Debby has taken a holistic approach to her own recovery, with a focus on lifestyle changes and emotional wellbeing. She is passionate about empowering others with evidence-based information and accessible tools to improve their health and quality of life.

Mr Malcolm Pike, Trustee

Malcolm joined the board in September 2022. Malcolm is an employment lawyer, business advisor and non-executive director with over 40 years' experience in private legal practice. He is currently Chair of Governors at Withington Girls' School, Vice President and NED of the Greater Manchester Chamber of Commerce, Chair of the Rugby Football League's Independent Employment Tribunal, a member of the ACAS panel of Independent Arbitrators, and Associate General Counsel – Employment (EMEA) at Associated British Foods plc.

Employees

Louise Brimble, CEO (left Peaches October 2024)

Louise was promoted to the position of Peaches CEO in September 2023. She has set the foundations to help Peaches grow in the future by facilitating recruitment, processes and delivering projects as well as coordinating stewardship of fundraisers.

Julia Hewer, Operations Executive (Joined Peaches January 2025)

Julia joins Peaches with a wealth of experience as a charity leader. She comes to Peaches from her CEO role within a Greater Manchester based carers organisation. Relationship building and sustainability, along with excellent, personalised service delivery and efficient processes, are key to Julia and this promises exciting opportunities in the years to come.

Julia Benning, Marketing and Communications Manager

Julia joined the team in September 2023 with a solid background in third sector communications and marketing. She hit the ground running, understanding the aspirations of Peaches, and putting internal building blocks in place to set the organisation up for growth. Julia has been responsible for delivering key Peaches campaigns across fundraising and awareness, including “Younger Women Get Womb Cancer Too” during Gynaecological Cancer Awareness Month (Sept 24). Her role supports the dissemination of breakthroughs in womb cancer research, and she works with healthcare professionals to offer trusted patient advice and support via the website and social media.

Julia is currently studying a Master’s degree in Philanthropic Studies at Kent University gaining a high-level understanding of civil society, fundraising, philanthropy, the third sector and volunteering.

Volunteers

Dr Madeline Poulton (left Peaches July 2024)

Madeline is an HR professional with over 20 years’ experience working with regional and global HR teams. She also volunteers for Maternity Action as their HR Volunteer. Madeline joined the Peaches Team in July 2022 and has been pivotal in setting the Charity up as an employer and leading on the recruitment process for our new employee positions within the charity

Anne Lowry, Gynaecological Oncology Clinical Nurse Specialist

Anne is a nurse advisor with the charity, Target Ovarian Cancer. Anne qualified as a nurse and graduated from the University of Northumbria with BSc (Hons) in Nursing Studies in 1997. Anne has always had an interest in womb cancer. She completed her MSc in Nursing Studies in 2019 with distinction and focused the modules of this degree towards learning more about the experiences of women with womb cancer and how best to support them.

Anne has worked within the speciality of gynaecology for most of her career in a variety of roles before becoming a nurse specialist in 2007. The role allowed Anne to support women and their families who are affected by gynaecological cancers. Anne facilitates the Peaches coffee morning group, a monthly virtual support group, which provides a safe space for those affected by womb cancer to share their experiences.

Helen White, Peaches Patient Voices

Helen's experience of womb cancer, combined with her passion for patient and public involvement (PPI), led her to join forces with Peaches in 2021 to establish Peaches Patient Voices, which she now leads.

Helen's interest in PPI was first sparked when she joined the Participant Panel at Genomics England in 2018, and it grew even further when she became patient representative for the womb cancer research group that analyses data donated by 100,000 Genomes Project participants. Since then, Helen has contributed to a wide range of PPI activities covering prevention, early detection, and treatment of womb cancer. These include her membership of the CanGene-CanVar Patient Reference Panel and the Cancer Research Advocates Forum, UK, formerly known as the NCRI Advocates Forum. Additionally, Helen is a member of the Advisory Committee for the RAINBO trial and serves as a patient expert when new womb cancer treatments are being considered for use in the NHS.

Helen has co-authored a number of publications, is a co-applicant on several research projects, and was awarded a Masters in Research in Public Health in 2022. In 2023, she was appointed Participant Panel Vice Chair for Cancer at Genomics England.

Grace Teeling, Policy and Advocacy

Grace has been living with an advanced cancer diagnosis for the past 5 years. She is a passionate advocate for improving experiences of people living with womb cancer. She supports Peaches through being an active member of our Peaches Patient Voice, providing vital contributions to technology appraisals and representing the organisation at events, delivering training and sharing expert lived experience.

Grace has worked across both academia and policy with a focus on energy and water services. She currently works in policy and advocacy for essential services, such as energy affordability. Grace has worked on some varied and interesting roles including community participation in rural wastewater, equality in small town water supplies in Ethiopia.

Harriet Hirst

Harriet began her career as a software developer and is currently a Customer Relationship Manager Leader at Heywood Pension Technologies.

PEACHES WOMB CANCER TRUST

England & Wales - Charity number 1190440

Accounts



Peaches Womb Cancer Trust
Annual Report and Accounts
2022-2023

Registered Charity Number: 1190440

Table of Contents

Trustees' Report 2022-2023	3
Achievements this year	3
<i>Patient Support</i>	3
<i>Raising Awareness</i>	5
Peaches Patient Voices.....	5
Advocating for those affected by womb cancer	7
Awards	8
Fundraising events	8
Community Fundraising	8
In memory.....	8
A huge thank you	8
Structure, Governance and Management.....	10
Charitable Objects.....	10
Management Structure	10
Financial Statement	15
Independent Examiner's Report	19
Financial Review	20
Risk Management.....	20
Plans for 2023-2024	21
<i>Patient Support</i>	21
<i>Raising Awareness</i>	21
<i>Advocacy</i>	21
<i>Promoting Research</i>	21
Peaches Patient Voices.....	22
Organisation	22
Reference and Administrative Details: Acknowledgements	23

Trustees' Report 2022-2023

In early 2020, a group of doctors from Saint Mary's Hospital in Manchester, all with a special interest in womb cancer and research realised that there was no charity dedicated to those affected by womb cancer. They identified that there was a great unmet need. Womb cancer is the fourth most common cancer in women, affecting nearly 10,000 women every year in the UK and the numbers are rising. However, very few people have heard of womb cancer or know what it is. Additionally, research into womb cancer has long been under-funded compared to other gynaecological cancers such as ovarian and cervical, despite it being more common.

In September 2020, Peaches Womb Cancer Trust was established by Professor Emma Crosbie, Dr Eleanor Jones, Dr Chloe Barr, Dr Helen Clarke, Dr Helena O'Flynn and Mrs Rosemary Pike. Its aim is to improve the lives of those affected by womb cancer by raising awareness, support patients and promote and fund research. The name comes from the peach-coloured ribbon that represents womb cancer and was inspired by the fact that a group of survivors refer to themselves as "Peach Sisters".

This is our third annual report, and what a fantastic year Peaches Womb Cancer Trust has had. We have kept up the momentum we gained in our first two years, and we have increased all our charitable activities, supporting patients, raising awareness, advocating for patients and funding and promoting research. We have been innovative, creative and flexible in order to raise our profile, our funds and to fulfil our charitable aims to help those with womb cancer.

Achievements this year

Patient Support

This year we have continued to keep our website updated with reliable information for patients. Our social media channels update our supporters on events that we are hosting. We continue to host our monthly coffee morning on the first Wednesday of every month. Living with womb cancer can be a lonely place, as those affected rarely get to meet others like them. Our Coffee Mornings aim to provide a safe space for those affected to meet others with similar experiences, to talk, listen, share stories and tips. Since they launched, The Coffee Mornings have gone from strength to strength, often fully and sometimes oversubscribed. Each meeting is different and is driven by the attendees and the items they would like to discuss. This provides interesting, supportive and varied discussions at each meeting. These are facilitated by Anne Lowry (Clinical Nurse Specialist and volunteer), who continues to create a warm and welcoming environment for the meetings. We are thankful for her support and expertise.

In September 2022, we hosted our second “Living Well after Womb Cancer” afternoon. This virtual event featured talks from experts in HRT, psychological support, lymphoedema, movement, sexual function, and an update on Peaches Patient Voices. The event was the second of its kind and attendance increased this year. We hope that it gave those who have had or are currently receiving treatment up-to-date and expert advice on recovery and wellness that will help them in their journey. We recorded all the sessions and were able to host four of them on our YouTube channel with permission from the speakers.

In November 2022, we hosted a webinar on “Womb cancer genomics: Research and patient benefit” led by Dr David Church and Dr Neil Ryan. With 130 sign-ups, it was well received and generated some useful feedback. This highlights that our community are interested in hearing about advances in womb cancer research.

In December 2022, we hosted a workshop on “Improving your Recovery – Essential Core and Pelvic Floor. We collaborated with a specialist in exercise after abdominal surgery. This was an interactive workshop where people were able to join in and do the exercises while learning about the benefits. We had 36 sign-ups for this workshop.

In January 2023, we hosted a webinar on “Menopause and Womb Cancer”. Sixty-four people signed up and over half attended the event. This was another interactive workshop where sharing and participation was encouraged. Hosted by Dr Helena O’Flynn and Dani Binnington, they explored the idea of medical and holistic options to manage menopause and its symptoms. We hear this subject mentioned a lot in the Coffee Mornings and we know that it can be a big factor in the recovery of those who are diagnosed with womb cancer.

On the back of our successful webinars, we explored how we could support and help more people diagnosed with womb cancer at the time they need it. We decided to create a bank of short, easily digestible videos, to provide information to people at any point along their womb cancer journey. It can be hard to understand information in the clinical setting, and, for some, questions may come to them once they are in the comfort of their own homes. These videos will be focused on providing medical facts whilst sharing the patient experience. Collaboration with Patient Voices members and Coffee Morning attendees was crucial in directing the content of these videos. We are still in the process of creating the videos and they are due to be completed by mid-2024. Feedback from the volunteers involved in this project has been positive and their willingness to help others feel more informed has been incredible. We are hugely grateful to GSK for providing a grant to fund this project.

Raising Awareness

We have been busy making plans for an awareness campaign, in collaboration with The Eve Appeal and GSK, to be launched in September 2023. We ran a YouGov survey to explore awareness of womb cancer and its signs and symptoms. The results showed that 1 in 3 people were not aware of womb cancer and over half were not aware of the most common symptom of the disease (post-menopausal bleeding). We look forward to seeing the impact of this awareness campaign and will report on this in our next annual report.

Our social media channels are being used to inform people of our events, to thank and celebrate the success of our fundraisers, and to share information about womb cancer. We are delighted to be seeing an increase in followers and activity on these pages.

We collaborated with a freelance designer to create a suite of social media tiles and to create a signs and symptoms poster that we can share with our supporters to help raise awareness. This work has also helped to refine the look and feel of our public facing content.

The International Gynecological Cancer Society approached us to support their international campaign to advocate for June to become Uterine (Womb) Cancer Awareness Month. This campaign was supported by 25 partners across 34 countries and translated into 11 languages. We were proud to support this campaign and will be taking the learnings from this into our own work as well as supporting the wider campaign again next year.

Trustees have participated in events raising awareness including Helen White attending Whittington golf club to speak at their fundraising event and Helena O'Flynn at Fulshaw WI.

Anne and Helen White participated in a UK Cancer Genetics Group/ CanGene-CanVar/ Association of Genetic Nurses and Counsellors Consensus Meeting, the aim of which was to make recommendations for the design of a patient information leaflet for cancer susceptibility genetics conditions, using Lynch syndrome as an exemplar. We hope that Peaches will be involved in co-designing the resultant leaflet for Lynch syndrome as this genetic condition causes approximately 3% of all womb cancers, and that Peaches will be co-badged on the leaflet subject to review and approval.

Promoting research

Peaches Patient Voices

Peaches Patient Voices (PPV) has continued to facilitate connections between people affected by womb cancer and researchers to ensure that womb cancer research addresses what matters most to patients and their families, ultimately improving outcomes for those living with and beyond womb cancer.

Membership of PPV increased by 28% over the course of the year, from 60 to 77 people, all of whom have experienced womb cancer themselves or have cared for someone diagnosed with womb cancer. Through PPV, a wide range of womb cancer research projects have been shaped by its members, including:

- Co-design of patient-facing materials including videos to support decision-making around participating in a multi-site UK study.
- Contributing to the design of a womb cancer prevention study.
- Undertaking a range of patient and public involvement roles to support a clinical trial looking at weight loss before surgery.
- Shaping the future of pelvic radiotherapy research

Moreover, Helen White, who leads PPV, was invited to join the Refining Adjuvant treatment IN endometrial cancer Based On molecular features (RAINBO) Advisory Committee and to be a co-applicant on the RAINBO No Specific Molecular Profile (NSMP) ORANGE trial. Helen was also invited as one of four patient advocates from around the world to contribute to the Gynaecological Cancer International Group Endometrial Cancer Consensus Conference on Clinical Research to be held in November 2023.

As well as promoting involvement in research, PPV has disseminated opportunities for its members to participate in research, for example, by completing surveys or attending workshops, and some of its members reviewed a guide to Lynch syndrome produced by the Eve Appeal. Furthermore, two members of PPV volunteered to share their experience of womb cancer, one at a Wellbeing of Women webinar titled, “Let’s Talk Gynae Cancers”, and another at a workshop for a pharmaceutical company’s employees. PPV members’ contributions have also been instrumental in shaping Peaches’ input to NICE appraisals of novel womb cancer treatments, as well as co-producing a series of videos to help Peaches improve support for those affected by womb cancer, to be launched in 2024.

PPV was delighted to host its inaugural research webinar, “Womb cancer genomics: Research and patient benefit,” in November. We are very grateful to Dr David Church and Dr Neil Ryan for giving such informative and engaging talks which were extremely well received by those who attended. Dr Ryan’s talk has proven to be the most watched on our YouTube channel as of August 2023.

Following on from last year’s success in the University of Manchester’s Social Responsibility in Biology, Medicine and Health Public Patient Involvement and Engagement (PPIE) Awards, we were invited to contribute to a blog series featuring the award recipients, which can be accessed here:

- PPIE Award Winner (Group): Peaches Womb Cancer Trust
<https://blogs.manchester.ac.uk/bmh-sr/2023/03/20/ppie-award-winner-peaches-womb-cancer-trust/>
- PPIE Highly Commended (Student): Helen White
<https://blogs.manchester.ac.uk/bmh-sr/2023/05/22/ppie-award-winner-helen-white/>

Advocating for those affected by womb cancer

Having been invited last year to contribute to both the Scottish Medicines Consortium (SMC) and National Institute of Health and Care Excellence (NICE) appraisals of pembrolizumab with lenvatinib for second line treatment of advanced and recurrent womb cancer, we were delighted to hear in October that the SMC had approved this drug combination for use by NHS Scotland.

However, NICE's initial decision not to recommend this treatment prompted a period of consultation during which our incredible community rallied to provide new evidence that helped us shape our response. We were therefore thrilled with the news in May that NICE's final decision was to recommend this treatment, ensuring for the first time in decades that a more effective second line treatment was available to all patients with advanced and recurrent womb cancer across the UK. This would not have been possible without the contributions of Peaches Patient Voices and members of the Womb Cancer Support UK community, whose powerful testimonies and experiences informed our submissions to the appraisal process.

Our press release on this news was picked up by several social media news outlets including BBC News, Sky News and The Independent, as well as in print in the Daily Express. We are incredibly grateful to Grace Teeling whose powerful story garnered wide media attention ensuring that this welcome news and coverage of womb cancer potentially reached millions of people across the UK and beyond.

We have been asked this year to contribute to the NICE appraisal of dostarlimab (with carboplatin and paclitaxel) for first line treatment of one type of advanced or recurrent endometrial cancer (mismatch repair deficient) and very much hope that this will be recommended by NICE next year.

In February, we were invited to respond to the Royal College of Obstetricians and Gynaecologists (RCOG) policy position statement on gynaecological cancers. The statement illustrates RCOG's key recommendations to improve prevention, diagnosis and treatment to the UK government and NHS. We responded regarding the need for increased awareness, non-invasive and appropriate testing, equitable access to testing for Lynch syndrome and adjuvant therapies. The final statement has not yet been published by RCOG.

Awards

In May, Eleanor Jones, Chloe Barr, Helena O’Flynn and Helen Clarke were honoured to be awarded first place in the student group category at the University of Manchester Volunteer of the Year Awards. They were recognised for their dedication, passion and drive in setting up and running Peaches Womb Cancer Trust.

Fundraising events

In September we launched our Million Steps fundraising campaign, asking people to take part in a 3-month steps challenge while raising money. It was a fundraising success reaching its target and it certainly got people stepping.

In May we repeated our Peaches and Cream Tea fundraising event. We didn’t have as many people taking part as we had hoped, but our loyal supporters did a great job of raising money while spreading awareness of womb cancer.

Community Fundraising

Community fundraising was a great success this year with people taking part in their own events and choosing to raise money for Peaches. Our supporters ran, swam, cycled, baked, raffled hampers, shaved their heads, played ukelele gigs and completed the world’s toughest obstacle race. In doing so, they raised over half of our income this year. Many of our supporters have direct experience of womb cancer or are friends or family of someone who was diagnosed with womb cancer. The selflessness of this community never ceases to amaze us, and we are forever grateful for all their support.

In memory

Losing a loved one is heartbreaking, and we are grateful to the families who chose to make donations to Peaches from funeral collections and celebration of life events. Our hearts go out to those who have lost their loved ones to womb cancer this year. Our work in raising awareness of this disease will continue thanks to your generous support.

A huge thank you

We could not undertake any of our work without the generous donations and hard work of our supporters. Our fundraisers were creative during the pandemic and have since continued to raise a huge amount of money for Peaches. We would like to say a massive thank you to all who have

held fundraising events and activities. Without all your support and you attending our events, we would not be where we are today.

A special thank you must go to all of those who, despite living with or beyond womb cancer, have raised money for us. The efforts, creativity, and drive to continue to raise awareness and funds to help people now and in the future is inspiring.

Finally, thank you to all the Trustees and volunteers who have worked so hard over the last year to grow the charity. Most have done this alongside full-time jobs and the dedication they have shown to the Charity and to the womb cancer cause is inspirational. A special thank you goes to Helen White who has gone over and above her trustee role by leading on PPV and the patient videos project this year. Her attention to detail and drive to make sure that these areas benefit those with womb cancer is inspiring. Dr Helena O'Flynn, Chair of Trustees, and Dr Eleanor Jones, Deputy Chair of Trustees, have been pivotal in the growth of Peaches this year. They have both been very hands on with the day-to-day delivery of our charitable aims, fundamental in delivering our objectives and expanding the team, all while holding down full-time jobs and raising young families.

We are delighted by the success that Peaches Womb Cancer Trust has had in its third year. We are looking forward to growing as a charity and improving the lives of those affected by womb cancer.

Structure, Governance and Management

Peaches Womb Cancer Trust is registered with the Charity Commission no: 1190440. It was established on 16th July 2020 and officially launched on 1st September 2020. This is the third set of accounts the charity has prepared, and this set of accounts covers the period from 1st September 2022 to 31st August 2023.

Charitable Objects

The objectives, as set out in the governing document are:

“To relieve sickness and to preserve the health and improve the experience of women with or at risk of womb cancer and their families in the United Kingdom, in particular but not exclusively by; carrying out research, raising awareness and the provision of patient education and support services.”

From 1st April 2018, the Charities Act requires that all charities ensure they meet their charitable objectives and that these are for the public benefit. The Charity Commission in its “Charities and Public Benefit” Guidance states that there are two key principles that must be met:

1. There must be an identifiable benefit
2. The benefit must be for the public or a section of the public.

The Trustees have paid due regard to guidance issued by the Charity Commission in deciding what activities the charity should undertake. The Trustees are satisfied that the aims and objectives of the charity and the activities reported on in this Annual Report meet these principles.

Management Structure

The Charity is run by a Board of 8 Trustees, 5 of whom founded Peaches Womb Cancer Trust. They are:

Professor Emma Crosbie, President.

Professor Crosbie is Professor of Gynaecological Oncology at the University of Manchester and consultant gynaecological surgeon at St Mary’s Hospital. Her clinical practice focuses on the fertility-sparing management of endometrial cancer and its precursor lesion, atypical hyperplasia. Her research into the prevention and early detection of womb cancer was recognised through a prestigious National Institute for Health Research (NIHR) Clinician Scientist Fellowship award in 2013 and the Royal College of Obstetricians and Gynaecologists William Blair

Bell Memorial Lectureship in 2017. She led the James Lind Womb Cancer Alliance Priority Setting Partnership that identified the top ten most important unanswered research questions in womb cancer, according to patients, carers and healthcare professionals. She is Chair of the Endometrial Subgroup of the National Cancer Research Institute (NCRI) Gynaecology Group, a member of the NCRI Screening, Prevention and Early Diagnosis (SPED) committee, and Early Detection Lead for the Manchester NIHR Biomedical Research Centre. Her research team 'Team Womb' won the NCRI Cancer Research Excellence in Surgical Trials (CREST) award in 2019 for outstanding recruitment to surgical trials.

Professor Crosbie is a busy mum of three who leads a diverse team of enthusiastic scientists and doctors who strive to carry out high quality research that improves the care of women affected by womb cancer. #wombwarriors.

Dr Chloe Barr, Trustee

Chloe is a Specialist Registrar in Obstetrics and Gynaecology recently completing a PhD at the University of Manchester investigating novel diagnostic and prognostic biomarkers for gynaecological malignancy. In 2010, she graduated from the University of Liverpool with MBChB honours and commenced the Obstetrics and Gynaecology specialist training programme in 2013. In 2018, she joined the clinical research team at St. Mary's Hospital Manchester, where, in addition to her research, she worked clinically looking after and treating women with gynaecological cancers. She is now back working clinically and aims to apply for gynaecological cancer surgical training. During her time working for Professor Crosbie, she treated and monitored women with womb cancer who are unable to undergo surgical treatment, either due to fertility reasons or other medical issues. Her experience as a clinician and researcher has made her passionate about improving services for women with womb cancer, including early detection, prevention and personalised treatment. This inspired her to be a part of the founding team of Peaches Womb Cancer Trust, a charity dedicated to raising awareness about womb cancer and funding ground-breaking womb cancer research.

Dr Eleanor Jones, Deputy Chair of Trustees

Eleanor is a Specialist Registrar in Obstetrics and Gynaecology. She has recently completed a PhD at the University of Manchester, investigating the early diagnosis of endometrial cancer and how it can be improved under the supervision of Professor Crosbie. She undertook her medical training at the University of St Andrews (BSc) and then the University of Manchester (MBChB), graduating in 2013. She started specialist training in Obstetrics and Gynaecology in 2015. Eleanor's long-term aim is to have a career as a Gynaecological Oncologist.

Dr Helen Clarke, Trustee

Helen studied medicine at Keele University following completion of an undergraduate BSc in Biomedical Science at De Montfort University, Leicester in 2007. She commenced her specialist training in Obstetrics and Gynaecology in 2014 within the Mersey region. In 2016 she was awarded an £18,000 entry level research scholarship from the Wellbeing of Women for research based at University of Liverpool. In 2022 she completed her PhD at the University of Manchester with Professor Crosbie and Dr Sacha Howell (Christie Hospital, Manchester) developing a clinical trial for cancer prevention in both endometrial and breast cancer, using dietary interventions.

Dr Helena O’Flynn, Chair of Trustees.

Helena is a General Practitioner working in Manchester following the completion of an Academic Clinical Fellowship training programme and a Masters in Public Health. She has an interest in the early detection of gynaecological cancers in Primary Care and women’s health. She graduated from medical school at the University of Manchester and was subsequently awarded an NIHR Doctoral Research Fellowship in 2018 and is undertaking a PhD at the University of Manchester investigating methods of early detection of endometrial cancer as well as awareness of symptoms of endometrial cancer.

Mr Malcolm Pike, Trustee

Malcolm joined the board in September 2022. Malcolm is an employment lawyer, business advisor and non-executive director with over 40 years’ experience in private legal practice. He is currently Chair of Governors at Withington Girls’ School, Vice President and NED of the Greater Manchester Chamber of Commerce, Chair of the Rugby Football League’s Independent Employment Tribunal, a member of the ACAS panel of Independent Arbitrators, and Associate General Counsel – Employment (EMEA) at Associated British Foods plc. Malcolm’s governance, management and legal experience is very beneficial to our Board.

Mr Simon Burrows, Trustee

Simon is a chartered accountant, with over 40 years’ experience of working in business – the last 25 years as a CFO in a range of SMOs. His family have been affected by cancer in the past, and he has 2 daughters, and is therefore very committed to the Charity’s ethos and causes.

He brings with him huge experience in all areas of finance, corporate governance and financial stewardship – and thus is an invaluable point of reference for the Trustees in the financial management of the Peaches.

Mrs Helen White, Trustee

Helen was diagnosed with womb cancer in 2017 which she subsequently discovered was due to Lynch syndrome. This lived experience inspired Helen's keen interest in PPIE and led her to join the Participant Panel at Genomics England, the Patient Reference Panel for CanGene-CanVar, and the NCRI Gynaecological Group. Helen established and runs Peaches Patient Voices, our fantastic group of people with lived experience of womb cancer who want to be involved in shaping womb cancer research. She also provides a unique patient perspective to the Peaches' team, helping to make sure we stay focused on what matters to those affected.

Employees

Miss Louise Brimble

Louise joined the team in September 2022 as our Fundraising and Operations Manager and our first employee. She comes from a national charity background with a focus on fundraising. She has been instrumental in implementing our systems and processes and setting us up for future growth while delivering what is needed today to support the charity. It is due to this process that we have been able to identify our key areas of growth and are able to expand the team to include a Marketing Manager. Louise has taken the position of CEO from August 2023 and we look forward to seeing what the future brings.

Volunteers

Mrs Anne Lowry

Anne is a Macmillan Gynaecology Clinical Nurse Specialist at St Mary's Hospital in Manchester. Anne qualified as a nurse and graduated from the University of Northumbria with BSc (Hons) in Nursing Studies in 1997. She has worked within the speciality of gynaecology for most of her career in a variety of roles before becoming a nurse specialist in 2007. This nurse specialist role allows Anne to support women and their families who are affected by gynaecological cancers.

Anne has always had an interest in womb cancer. She completed her MSc in Nursing Studies in 2019 with distinction and focused the modules of this degree towards learning more about the experiences of women with womb cancer and how best to support them. She has also been involved in health promotion events to raise the profile of womb cancer and is very aware through this work that a national charity like Peaches Womb Cancer Trust has a big part to play in improving the outcomes for women with this disease. Anne has set up, nurtured, and grown our Peaches Coffee Mornings and created a mutually supportive environment in them. She has also grown our network of CNS contacts to allow us to reach more patients.

Mrs Harriet Hirst

Harriet began her career as a software developer and is currently a Customer Relationship Manager Leader at Heywood Pension Technologies. Harriet has volunteered this year as our website developer, bringing lots of great ideas to the team and she and has done a brilliant job of ensuring that website content is kept up to date.

Dr Madeline Poulton

Madeline is an HR professional with over 20 years' experience working with regional and global HR teams. She also volunteers for Maternity Action as their HR Volunteer. Madeline joined the Peaches Team in July 2022 and has been pivotal in setting the Charity up as an employer and leading on the recruitment process for our new employee positions within the charity.

Mrs Rosemary Pike.

As one of the founding trustees of Peaches, Rosemary chose to stand down at the end of 2022 and has continued to be a volunteer. Rosemary sends out all promotional material to Nurse Specialists and fundraisers helping them to raise awareness and funds. Rosemary is also a great advocate for Peaches, continuing to hold fundraising events at her home and involving her flower club and the local WI in raising money for Peaches.

Peaches Womb Cancer Trust

**STATEMENT OF FINANCIAL ACTIVITIES
(INCLUDING INCOME AND EXPENDITURE ACCOUNT)
FOR THE PERIOD ENDED 1 SEPTEMBER 2023**

	Notes	Total Funds 2023 £	Total Funds 2022 £
INCOMING RESOURCES			
Incoming resources from generated funds			
Donations and legacies	1	8,412	8,466
Income resources from charitable activities	2	56,767	24,298
Bank interest		350	
		<hr/>	<hr/>
Total incoming resources		65,529	32,764
		<hr/>	<hr/>
RESOURCES EXPENDED			
Cost of generating funds			
Costs of generating voluntary income		2,458	2,447
Fundraising trading: costs of goods sold			
Employee costs		28,030	1,075
Charitable aims		3,548	5,766
		<hr/>	<hr/>
		34,037	9,288
		<hr/>	<hr/>
NET INCOMING RESOURCES AVAILABLE		31,492	23,476
		<hr/>	<hr/>
Governance costs	3	2,589	1,164
		<hr/>	<hr/>
Total resources expended		36,626	10,451
		<hr/>	<hr/>
NET MOVEMENT IN FUNDS		28,903	22,313
		<hr/>	<hr/>
TOTAL FUNDS CARRIED FORWARD		28,903	22,313
		<hr/>	<hr/>

Peaches Womb Cancer Trust

**BALANCE SHEET
AS AT 1 SEPTEMBER 2023**

		2023	2022
	Note	£	£
CURRENT ASSETS			
Debtors	5	-	-
Cash and bank		66,601	37,697
		<hr/>	<hr/>
		66,601	37,697
CREDITORS: Amounts due within one year	6	-	-
		<hr/>	<hr/>
TOTAL ASSETS LESS CURRENT LIABILITIES		<u>66,601</u>	<u>37,697</u>
THE FUNDS OF THE CHARITY			
Brought forward funds		37,697	15,384
Movement in year		28,903	22,313
Unrestricted funds		<hr/> 66,601	<hr/> 37,697
TOTAL CHARITY FUNDS		<hr/> <u>66,601</u>	<hr/> <u>37,697</u>
		-	-

Peaches Womb Cancer Trust

NOTES TO THE FINANCIAL STATEMENTS FOR THE PERIOD ENDED 1 SEPTEMBER 2023

1 ACCOUNTING POLICIES

Basis of preparation

The financial statements of the charity, which is a public benefit entity under FRS 102, have been prepared in accordance with the Charities SORP (FRS 102) 'Accounting and Reporting by Charities: Statement of recommended Practice applicable to charities preparing their accounts in accordance with the Financial Reporting Standard applicable in the UK and Republic of Ireland (FRS 102) (effective 1 January 2015)', Financial Reporting Standard 102 'The Financial Reporting Standard applicable in the UK and Republic of Ireland', the Charities Accounts (Scotland) Regulations 2006 and the Charities Act 2011. The financial statements have been prepared under the historical cost convention.

Income

All incoming resources are included in the statement of financial activities when the charity is entitled to the income and the amount can be quantified with reasonable accuracy.

Resources expended

Expenditure has been charged to the income and expenditure account on the accruals basis. The irrecoverable element of VAT is included with the item of expense to which it relates.

Charitable expenditure comprises these costs incurred by the charity in the delivery of its activities and services for its beneficiaries. It includes both costs that can be allocated directly to such activities and those costs of an indirect nature necessary to support them.

Governance costs include those costs associated with meeting constitutional and statutory requirements of the charity and include the fees and costs linked to the strategic management of the charity

1 DONATIONS AND LEGACIES

	2023	2022
	£	£
Direct Donations	5,927	5,806
Gift Aid	1,775	
Memory Giving	709	660
Legacies		2,000
	<u>8,412</u>	<u>8,466</u>

2 INCOMING RESOURCES FOR CHARITABLE ACTIVITIES

	2023	2022
	£	£
Owned fundraising	6,750	7,733
Community fundraising	26,033	5,217
Corporate fundraising	276	1,420
Grants and trusts fundraising	23,460	9,606
Shopping fundraising	248	322
	<u>56,767</u>	<u>24,298</u>

**NOTES TO THE FINANCIAL STATEMENTS
FOR THE PERIOD ENDED 1 SEPTEMBER 2023**

3 TOTAL RESOURCES EXPENDED

	Total 2023 £	Total 2022 £
Costs of generating funds		
Costs of generating voluntary income	2,458	2,447
Charitable aims	3,548	5,766
Employee costs	28,030	1,075
Total	34,037	9,288
Governance costs		
Accountancy fees	1,140	93
Running costs	1,449	1,071
	2,589	1,164
	36,626	10,451

4 TRUSTEES

None of the trustees (or any persons connected with them) received any remuneration during the period.

5 DEBTORS

	2023 £	2022 £
Trade debtors	-	-
	-	-

6 Creditors

	2023 £	2022 £
Accruals	-	-
	-	-

Independent Examiner's Report

PEACHES WOMB CANCER TRUST INDEPENDENT EXAMINER'S REPORT TO THE TRUSTEES OF PEACHES WOMB CANCER TRUST

I report to the trustees on my examination of the accounts of the charity for the year ended 1 September 2023, which are set out on pages 9 to 12.

Respective responsibilities of trustees and examiner

The charity's trustees are responsible for the preparation of the accounts in accordance with the Charities Act 2011. The charity trustees consider that the audit requirements of section 144 of the Charities Act 2011 do not apply.

It is my responsibility to:

- (i) examine the accounts under section 145 of the Charities Act 2011
- (ii) to follow the procedures laid down in the general Directions given by the Charity Commission under section 145(5)(b) of the Charities Act 2011
- (iii) To state whether particular matters have come to my attention.

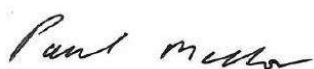
Basis of independent examiner's report

My examination is carried out in accordance with the general directions given by the Charity Commission. An examination includes a review of the accounting records kept by the charity and a comparison of the accounts presented with those records. It also includes consideration of any unusual items or disclosures in the accounts and seeks explanations from the trustees concerning any such matters. The procedures undertaken do not provide all the evidence that would be required in an audit, and consequently I do not express an audit opinion on the view given by the accounts.

Independent examiner's statement

In connection with my examination, no matter has come to my attention:

- (a) Which gives me reasonable cause to believe that in any material respect the requirements:
 - (i) to keep accounting records in accordance with section 130 of the Charities Act 2011
 - (ii) to prepare accounts which accord with the accounting records and comply with Regulation 8 of the 2006 Accounts Regulations (as amended) and the requirements concerning the form and content of accounts set out in the Charities (Accounts and Reports) Regulations 2008 of the Charities Act 2011;Have not been met; or
- (b) To which, in my opinion, attention should be drawn in order to enable a proper understanding of the accounts to be reached.



**Paul Mellor ACA
Clarke Nicklin LLP
Chartered Accountants
Clarke Nicklin House
Cheadle Royal Business Park
Cheadle
Cheshire
SK8 3TD
Dated: 19/06/2024**

Financial Review

The accounts have been prepared in accordance with the accounting policies set out in note 1 to the accounts and comply with the charity's governing document, the Charities Act 2011 and the Statement of Recommended Practice, "Accounting and Reporting by Charities", issued in March 2005.

As shown in the Statement of Accounts, Peaches Womb Cancer Trust's income for this second year has been predominantly from community fundraising and grants and trusts fundraising. We are very grateful to all of those who chose to donate or fundraise for us and to the organisations who generously gave us grants, particularly GSK, The Basil Samuel Trust, The Albert Hunt Trust and the Marsh Charitable Trust.

For Peaches Womb Cancer Trust to grow and to further its aims and objectives, more manpower in the form of both volunteers and employees is needed. Our primary focus has been to obtain sufficient resources to fund our next employees. Therefore, the bulk of the income we have received has not yet been spent as it is being saved for this purpose. Our secondary financial focus was to fund a patient support project to create information videos, which are currently in development. Thanks to the generous sponsorship of GSK, the cost of the awareness campaign that we are planning in conjunction with The Eve Appeal for September 2023 will not be borne by Peaches Womb Cancer Trust.

Risk Management

The trustees have assessed the major risks to which the charity is exposed and are satisfied that systems are in place to mitigate exposure to the major risks. An up-to-date risk register is maintained and regularly reviewed.

Plans for 2023-2024

Patient Support

In the coming year, we will complete the patient support videos and host them on our website and on our YouTube channel. We are planning a major update of the website so that the information it contains is more accessible and digestible. We will continue to develop our patient support services this year, and we will be conducting a survey in the early part of the year to inform us of the most pertinent unmet support needs so that we can look to provide these. We will then develop these services in collaboration with our Patient Voices and Coffee Morning attendees. Additional funding will be applied for to fund this project.

Raising Awareness

We will take the learnings from our national awareness campaign in September 2023 and continue to raise awareness of womb cancer. We will aim to create and run a campaign in June 2024 and champion the newly formed Womb Cancer Awareness Month. We will be focusing on highlighting the signs and symptoms of womb cancer alongside powerful stories of people who have been affected by womb cancer and how early diagnosis saves lives.

Advocacy

“We will continue to advocate for womb cancer patients and their loved ones on a national level to #GiveWombCancerAVoice. We will do everything we can as part of the NICE and SMC appraisal process to ensure that the views of those with experience of womb cancer are counted. We hope that this will increase the likelihood of a positive outcome of these appraisals and approval of these vital new treatments.”

Promoting Research

We will continue to offer research bursaries to early career researchers presenting their work into womb cancer at conferences to support the future of womb cancer research. Our long-term goal is to fund significant research projects with tangible outcomes; however, these are very costly. We plan to start a fund that will grow over the coming years to allow us to do this in the future. We will explore ways to fund entry level research posts and collaborate with other organisations.

Peaches Patient Voices

We will continue to grow the Peaches Patient Voices community and its involvement in varied research projects, ensuring that womb cancer research is focused on the needs of the patients.

Organisation

Trustees

Over the coming year we will seek to diversify our Board to bring in a wider skillset and different experiences. We will particularly look for Trustees with marketing and fundraising experience. We hope to expand the Board to support the development of our patient support services focusing on the areas not currently covered including oncology and psychological support.

Volunteers

We know the value of volunteers and are grateful for their support as without them we would not be where we are today. We will look for volunteers with marketing, fundraising or patient support experience.

Employees

We have successfully recruited for and now look forward to welcoming two new employees early in the next financial year. They will be employed as our Marketing Manager and Fundraising Officers. We hope that our new Marketing Manager will help us to expand our reach and the Fundraising Officer will help us to secure new funding streams, allowing the organisation to continue to grow.

Reference and Administrative Details: Acknowledgements

Peaches Womb Cancer Trust is an independent charitable Trust.

Registered Charity (England and Wales) no. 1190440.

Our registered address is: Peaches Womb Cancer Trust, Clarke Nicklin House, 4 Brooks Drive, Cheadle Royal Business Park, Cheadle, Cheshire, SK8 3TD

Governing Document

Accountants:

Clarke Nicklin
Clarke Nicklin House
4 Brooks Drive
Cheadle Royal Business Park
Cheadle
Cheshire
SK8 3TD

Solicitors:

Addleshaw Goddard LLP
Milton Gate
60 Chiswell Street
London
EC1Y 4AG

Bankers:

CAF Bank
25 Kings Hill Avenue
Kings Hill
West Malling
Kent
ME19 4JQ

www.peachestrust.org

Email: admin@peachestrust.org

Instagram: @peaches_trust Facebook: Peaches Womb Cancer Trust. Twitter: @peachestrust

PEACHES WOMB CANCER TRUST

England & Wales - Charity number 1190440

Accounts



Peaches Womb Cancer Trust
Annual Report and Accounts
2021-2022

Registered Charity Number: 1190440

Table of Contents

Trustees’ Report 2020-2021..... 3

Achievements this year 3

Patient Support.....3

Raising Awareness.....4

Advocating for those affected by womb cancer.....5

Promoting research5

Peaches Patient Voices6

Awards6

Fundraising events.....7

In memory7

A huge thank you.....7

Structure, Governance and Management 8

Charitable Objects8

Management Structure.....8

Financial Statement.....12

Independent Examiner’s Report16

Financial Review.....17

Risk Management17

Plans for 2022-2023.....18

Patient Support.....18

Raising Awareness.....18

Advocacy18

Promoting Research.....18

Peaches Patient Voices19

Organisation.....19

Reference and Administrative Details: Acknowledgements21

Trustees' Report 2020-2021

In early 2020, a group of doctors from Saint Mary's Hospital in Manchester, all with a special interest in womb cancer and research realised that there was no charity dedicated to womb cancer and those affected identified that there was a great unmet need. Womb cancer is the fourth most common cancer in women, affecting nearly 10,000 women every year in the UK and the numbers are rising. And yet, very few people have heard of womb cancer or know what it is. Additionally, research into womb cancer has long been under-funded compared to other gynaecological cancers such as ovarian and cervical, despite it being more common.

In September 2020, Peaches Womb Cancer Trust was established by Professor Emma Crosbie, Dr Eleanor Jones, Dr Chloe Barr, Dr Helen Clarke, Dr Helena O'Flynn and Mrs Rosemary Pike. Its aim is to improve the lives of those affected by womb cancer by raising awareness, supporting patients and promoting and funding research. The name comes from the peach-coloured ribbon that represents womb cancer and was inspired by the fact that a group of survivors refer to themselves as "Peach Sisters".

This is our second annual report, and what a fantastic year Peaches Womb Cancer Trust has had. We have kept up the momentum we gained in our first year and we have increased all of our charitable activities, supporting patients, raising awareness, advocating for patients and funding and promoting research. We have been innovative, creative and flexible in order to raise our profile, our funds and to fulfil our charitable aims to help those with womb cancer.

Achievements this year

Patient Support

This year we have continued to keep our website updated with reliable information for patients. Our social media channels update our supporters on events that we are hosting, and we have released a series called "Peaches Patient Stories", where women have generously shared their own womb cancer story in the hope that it might be of some comfort and support to readers, as well as raising awareness. We would like to say a huge thank you to Debby, Nicola, Karen, Jenny, Carol Sally, Helen, Lavinia and Lynne. Their unique stories and poems will help others to feel less alone.

In September 2021 we hosted our first "Living Well after Womb Cancer" afternoon. This virtual event featured talks from experts in nutrition, psychology, pelvic physiotherapy and sexual function and the personal journey of one of our supporters. The event was very well received

and we hope that it gave those who have had or are currently receiving treatment up-to-date and expert advice on recovery and wellness that will help them in their journey.

In May 2022 we hosted a webinar on “Intimate health changes and sexual wellbeing after womb cancer treatment”. The speakers, Julia Pugh, a psychosexual therapist, and Lavinia Winch, ambassador for YES! delivered an excellent webinar and addressed several common issues patients face that are not often discussed or addressed by clinicians.

We recognised that in order to reach and support more women, we needed to spread the word about Peaches amongst cancer Clinical Nurse Specialists (CNS). Thanks to a generous grant from GlaxoSmithKline (GSK) we were able to create promotional packs, with business cards and leaflets to be given to patients, posters to be displayed in hospitals, and pens, lanyards and pin badges to raise awareness of Peaches Womb Cancer Trust amongst clinicians. To date we have sent out over 90 packs to hospital teams across the country and we know from many of our new supporters that they have received the information about Peaches Womb Cancer Trust from their CNS.

In April 2022 we launched our Peaches Coffee Mornings, virtual events facilitated by Anne our CNS, where those affected by womb cancer come together to share their experience. Living with womb cancer can be a lonely place, as those affected rarely get to meet others like them, and the last two years of the Covid pandemic have made things even more challenging. Our Coffee Mornings aim to provide a safe space for those affected to meet others with similar experiences, to talk, listen, share stories and tips. Since they launched, the Coffee Mornings have gone from strength to strength. We have seen a big increase in the numbers attending and interesting, supportive and varied discussions take place at each meeting.

In July 2022 the Peaches Team attended the British Gynaecological Society Annual Scientific Meeting in London. This was a fantastic opportunity to network and to spread the message about the Charity, the patient support services that we offer and our Peaches Patient Voices group (see below) to doctors and CNSs working in gynaecological oncology.

Raising Awareness

Our social media channels aim to spread the message about womb cancer and its symptoms. This year we have also delivered awareness talks to the UK employees of GSK and Addleshaw Goddard LLP. The purpose of these talks was to raise awareness of womb cancer and educate employees on the risk factors, early symptoms and diagnosis.

Advocating for those affected by womb cancer

Last year we were invited to review and provide opinion on the National Institute of Health and Care Excellence (NICE) Consultation on dostarlimab, a new treatment being considered for advanced and recurrent womb cancer. We were therefore delighted with the news in February 2022 that NICE decided to approve the use of dostarlimab for previously treated advanced or recurrent endometrial cancer with high microsatellite instability or mismatch repair deficiency. This is the first time in a generation that a new treatment for womb cancer has been made available and patients with advanced and recurrent disease have so far had very few options available to them. Whilst dostarlimab will not be an option for all of those with advanced and recurrent womb cancer we hope that this heralds a wave of new targeted treatments to improve the lives and survival of all those with this devastating disease. Following this news, we put out a press release which was picked up by some national news outlets leading to us being quoted in the Daily Mail newspaper.

We have also been asked this year to comment on the NICE and Scottish Medicines Consortium (SMC) appraisals of a new combination treatment, pembrolizumab with lenvatinib, for all women with previously treated advanced or recurrent endometrial cancer. The appraisal processes are currently ongoing, but we very much hope that this treatment option will be approved by both NICE and the SMC in the coming year.

Earlier in the year, the UK Government made a call for public views to help inform and develop their 10-Year Cancer Plan. We circulated this on social media to give our followers a chance to have their voices heard and we put in a compelling submission to advocate for those affected by womb cancer.

Promoting research

We are proud to have supported two early career researchers to present their work at scientific conferences. Dr Kelechi Njoku and Miss Olivia Aurangzeb were both awarded Peaches Womb Cancer Trust Bursaries to allow them to present their research at the Royal College of Obstetricians and Gynaecologists Annual Academic Meeting in February 2022. It was wonderful to see two early career researchers presenting their work into womb cancer at such a prestigious meeting and helping to raise awareness of womb cancer.

In June 2022 we hosted a webinar “AI in Cancer Care”, where we were informed about the role that artificial intelligence (AI) and software might play in womb cancer treatment.

Peaches Patient Voices

In October 2021, Peaches Patient Voices (PPV) was launched, led by Helen White. Helen, who was herself diagnosed with womb cancer in 2017, was already involved in a number of patient and public involvement (PPI) activities and recognised that a wider and more diverse range of views, experiences and perspectives was needed to inform research. She therefore approached the Peaches Team with her idea and, together, we set up PPV. PPV is a group of people with lived experience of womb cancer who are keen to be connected with researchers looking for PPI in their work. PPV has proven to be extremely popular with our supporters and there are currently 60 members. So far, eight research projects have been shaped or influenced by our PPV members, some of which have involved the formation of longer-term partnerships. For example, PPV members Danni and Sandra have partnered with Dr Louise Wan to guide her research (on shared decision-making in womb cancer treatment), and we are extremely grateful to them for writing a blog about their experience of working together.

It has been fantastic to see how rewarding many of our members have found their experience of PPI and how it has promoted patient wellbeing and empowerment.

““Being a patient voice participant is an important opportunity. I'm excited to think that my experience can hopefully feed into the health and wellbeing of future cancer patients.”

PPV involvement has helped to shape ground-breaking research that could inspire change and benefit patients all over the country, and beyond. The research community have also universally welcomed the opportunity to connect easily with people affected by womb cancer from across the UK:

“[Peaches Patient Voices] is a great initiative as it provides a single point of contact for researchers like me to find people who have already expressed an interest in being involved in research”.

PPV members' contributions have also been instrumental in shaping the Peaches submissions for the recent NICE and SMC new treatment appraisals. Having access to a group of people who were willing to share their perspectives of advanced womb cancer, and the impact of treatment, was an enormous help to Peaches and ensured the collective patient voice was heard, loud and clear.

Awards

In July 2022 the Peaches team attended the University of Manchester Outstanding Contribution to Patient and Public Involvement and Engagement (PPIE) Awards. We were delighted that Peaches Womb Cancer Trust was awarded the Group Winner and Helen White was Highly Commended in the Individual category. This award was in recognition of Peaches Patient Voices and the contribution that it has made to research.

Fundraising events

Our fundraising efforts began during September 2021, Gynaecological Cancer Awareness Month, with “Walking for Wombs”, where supporters were encouraged to set the location and distance and walk to raise awareness of womb cancer and raise money for Peaches. In May 2022, we had 10 fundraisers running the Great Manchester Run for Peaches, raising over £4000 between them. One runner, Rosina, ran both the half marathon and the 10km races back-to-back! In May and June 2022 we also ran our first “Peaches and Cream Tea” event, inviting fundraisers to host afternoon tea events for their friends and families.

In memory

We were so sorry to hear the news in March this year that Sally Spencer sadly died from her womb cancer. Sally and her daughter Sarah Shapcott have championed Peaches since we launched. They have been our biggest supporters and raised an enormous amount of money. They have tirelessly campaigned, helping to raise the profile of womb cancer. Sally was a kind and generous woman and a wonderful ambassador for Peaches. We are so very grateful for everything she did for Peaches and for all of her support. We will never forget her.

A huge thank you

We could not undertake any of our work without the generous donations and hard work of our supporters. Our fundraisers were creative during the pandemic and have continued since to raise a huge amount of money for Peaches. We would like to say a massive thank you to all who have held fundraising events and activities. Without all of your support and you attending our events, we would not be where we are today.

A special thank you must go to Womb Cancer Support UK. Kaz Molloy from Womb Cancer Support UK has done an amazing job of supporting patients over many years, which she continues to do, whilst also championing us at Peaches. Womb Cancer Support UK have continued to raise and donate money to Peaches this year, which has made a big difference to us.

Finally, thank you to all the Trustees and volunteers who have worked so hard over the last year to grow the charity. Most have done this alongside full-time jobs and the dedication they have shown to the Charity and to the womb cancer cause is inspiring.

We are delighted by the success that Peaches Womb Cancer Trust has had in its second year and are looking forward to a very bright future for the charity and all of those affected by womb cancer.

Structure, Governance and Management

Peaches Womb Cancer Trust is registered with the Charity Commission no: 1190440. It was established on 16th July 2020 and officially launched on 1st September 2020. This is the second set of accounts the charity has prepared, and this set of accounts covers the period from 1st September 2021 to 31st August 2022.

Charitable Objects

The objectives, as set out in the governing document are:

“To relieve sickness and to preserve the health and improve the experience of women with or at risk of womb cancer and their families in the United Kingdom, in particular but not exclusively by; carrying out research, raising awareness and the provision of patient education and support services.”

From 1st April 2018, the Charities Act requires that all charities ensure they meet their charitable objectives and that these are for the public benefit. The Charity Commission in its “Charities and Public Benefit” Guidance states that there are two key principles that must be met:

1. There must be an identifiable benefit
2. The benefit must be for the public or a section of the public.

The Trustees have paid due regard to guidance issued by the Charity Commission in deciding what activities the charity should undertake. The Trustees are satisfied that the aims and objectives of the charity and the activities reported on in this Annual Report meet these principles.

Management Structure

The Charity is run by a Board of six Trustees, who together founded Peaches Womb Cancer Trust. They are:

Professor Emma Crosbie, Chair of Trustees

Professor Crosbie is Professor of Gynaecological Oncology at the University of Manchester and consultant gynaecological surgeon at St Mary’s Hospital. Her clinical practice focuses on the fertility-sparing management of endometrial cancer and its precursor lesion, atypical hyperplasia. Her research into the prevention and early detection of womb cancer was recognised through a prestigious National Institute for Health Research (NIHR) Clinician Scientist Fellowship award in 2013 and the Royal College of Obstetricians and Gynaecologists William Blair

Bell Memorial Lectureship in 2017. She led the James Lind Womb Cancer Alliance Priority Setting Partnership that identified the top ten most important unanswered research questions in womb cancer, according to patients, carers and healthcare professionals. She is Chair of the Endometrial Subgroup of the National Cancer Research Institute (NCRI) Gynaecology Group, a member of the NCRI Screening, Prevention and Early Diagnosis (SPED) committee, and Early Detection Lead for the Manchester NIHR Biomedical Research Centre. Her research team 'Team Womb', won the NCRI Cancer Research Excellence in Surgical Trials (CREST) award in 2019 for outstanding recruitment to surgical trials.

Professor Crosbie is a busy mum of three who leads a diverse team of enthusiastic scientists and doctors who strive to carry out high quality research that improves the care of women affected by womb cancer. #wombwarriors.

Dr Chloe Barr

Chloe is a Specialist Registrar in Obstetrics and Gynaecology currently undertaking a PhD at the University of Manchester investigating novel diagnostic and prognostic biomarkers for gynaecological malignancy. In 2010, she graduated from the University of Liverpool with MBChB honours and commenced the Obstetrics and Gynaecology specialist training programme in 2013. In 2018, she joined the clinical research team at St. Mary's Hospital Manchester, where, in addition to her research, she worked clinically looking after and treating women with gynaecological cancers. She is now back working clinically and aims to apply for gynaecological cancer surgical training. During her time working for Professor Crosbie, she treated and monitored women with womb cancer who are unable to undergo surgical treatment, either due to fertility reasons or other medical issues. Her experience as a clinician and researcher has made her passionate about improving services for women with womb cancer, including early detection, prevention and personalised treatment. This inspired her to be a part of the founding team of Peaches Womb Cancer Trust, a charity dedicated to raising awareness about womb cancer and funding ground-breaking womb cancer research.

Dr Eleanor Jones

Eleanor is a Specialist Registrar in Obstetrics and Gynaecology, currently working as a Clinical Research Fellow in Gynaecological Oncology, in the final year of a PhD at the University of Manchester, investigating the early diagnosis of endometrial cancer and how it can be improved. She undertook her medical training at the University of St Andrews (BSc) and then the University of Manchester (MBChB), graduating in 2013. She started specialist training in Obstetrics and Gynaecology in 2015 and came out of her training programme in 2018 to join Professor Crosbie's research team. Eleanor's long-term aim is to have a career as a Gynaecological Oncologist.

Dr Helen Clarke

Helen studied medicine at Keele University following completion of an undergraduate BSc in Biomedical Science at De Montfort University, Leicester in 2007. She commenced her specialist training in Obstetrics and Gynaecology in 2014 within the Mersey region. In 2016 she was awarded an £18,000 entry level research scholarship from the Wellbeing of Women for research based at University of Liverpool. In 2019 she commenced her PhD at the University of Manchester with Professor Crosbie and Dr Sacha Howell (Christie Hospital, Manchester) developing a clinical trial for cancer prevention in both endometrial and breast cancer, using dietary interventions.

Dr Helena O'Flynn

Helena is a General Practitioner working in Manchester following the completion of an Academic Clinical Fellowship training programme and a Masters in Public Health. She has an interest in the early detection of gynaecological cancers in Primary Care and women's health. She graduated from medical school at the University of Manchester and was subsequently awarded an NIHR Doctoral Research Fellowship in 2018 and is undertaking a PhD at the University of Manchester investigating methods of early detection of endometrial cancer as well as awareness of symptoms of endometrial cancer.

Mrs Rosemary Pike

Rosemary is a trustee of Peaches Womb Cancer Trust and is a non-medical member of the team. She is a retired solicitor and was a magistrate for 18 years. Over the years she has been involved in a number of charities, with one of her longstanding roles as a trustee of a large North West children's charity.

Employees

The Charity has had no employees this year.

Volunteers

Mrs Anne Lowry

Anne is a Macmillan Gynaecology Clinical Nurse Specialist at St Mary's Hospital in Manchester. Anne qualified as a nurse and graduated from the University of Northumbria with BSc (Hons) in Nursing Studies in 1997. She has worked within the speciality of gynaecology for most of her career in a variety of roles before becoming a nurse specialist in 2007. This nurse specialist role allows Anne to support women and their families who are affected by gynaecological cancers.

Anne has always had an interest in womb cancer. She completed her MSc in Nursing Studies in 2019 with distinction and focused the modules of this degree towards learning more about the experiences of women with womb cancer and how best to support them. She has also been involved in health promotion events to raise the profile of womb cancer and is very aware through this work that a national charity like Peaches Womb Cancer Trust has a big part to play in improving the outcomes for women with this disease. Anne has set up, nurtured and grown our Peaches Coffee Mornings and created a mutually supportive environment in them. She has also grown our network of CNS contacts to allow us to reach more patients.

Miss Elisabeth Pinggera

Lilly has recently completed a BSc at the University of Manchester and is currently working as a Research Assistant within the Womb Cancer Research Group. She manages our social media channels, designing and producing the posts we put out and she helps with the production of promotional materials for the Charity. This has allowed us to post more regular content, to increase our engagement and to ensure consistency with our styling.

Mrs Helen White

Helen was diagnosed with womb cancer in 2017 which she subsequently discovered was due to Lynch syndrome. This lived experience inspired Helen's keen interest in PPIE and led her to join the Participant Panel at Genomics England, the Patient Reference Panel for CanGene-CanVar, and the NCRI Gynaecological Group. Helen established and runs Peaches Patient Voices, our fantastic group of people with lived experience of womb cancer who want to be involved in shaping womb cancer research. She also provides a unique patient perspective to the Peaches Team, helping to make sure we stay focused on what matters to those affected.

Mrs Harriet Hirst

Harriet began her career as a software developer and is currently a Customer Relationship Manager Leader at Heywood Pension Technologies. Harriet has volunteered this year as our website developer, bringing lots of great ideas to the team and she and has done a brilliant job of ensuring that website content is kept up to date.

Dr Madeline Poulton

Madeline is an HR professional with over 20 years' experience working with regional and global HR teams. She also volunteers for Maternity Action as their HR Volunteer. Madeline joined the Peaches Team in July 2022 and has already been pivotal in setting the Charity up as an employer and leading on the recruitment process for our Fundraising and Operations Manager.

Peaches Womb Cancer Trust

**STATEMENT OF FINANCIAL ACTIVITIES
(INCLUDING INCOME AND EXPENDITURE ACCOUNT)
FOR THE PERIOD ENDED 1 SEPTEMBER 2022**

	Notes	Total Funds 2022 £	Total Funds 2021 £
INCOMING RESOURCES			
Incoming resources from generated funds			
Donations and legacies	1	8,466	8,640
Income resources from charitable activities	2	24,298	10,451
Interest			
		<hr/>	<hr/>
Total incoming resources		32,764	19,091
		<hr/>	<hr/>
RESOURCES EXPENDED			
Cost of generating funds			
Costs of generating voluntary income		2,447	1,308
Fundraising trading: costs of goods sold			1,134
Employee costs		1,075	
Charitable aims		5,766	
		<hr/>	<hr/>
		9,288	2,442
		<hr/>	<hr/>
NET INCOMING RESOURCES AVAILABLE		23,476	16,649
		<hr/>	<hr/>
Governance costs	3	1,164	1,265
		<hr/>	<hr/>
Total resources expended		10,451	3,707
		<hr/>	<hr/>
NET MOVEMENT IN FUNDS		22,313	15,384
		<hr/>	<hr/>
TOTAL FUNDS CARRIED FORWARD		22,313	15,384
		<hr/>	<hr/>

Peaches Womb Cancer Trust

**BALANCE SHEET
AS AT 1 SEPTEMBER 2022**

		2022	2021
	Note	£	£
CURRENT ASSETS			
Debtors	5	-	268
Cash and bank		37,697	16,196
		<hr/>	<hr/>
		37,697	16,464
CREDITORS: Amounts due within one year	6	-	(1,080)
		<hr/>	<hr/>
TOTAL ASSETS LESS CURRENT LIABILITIES		<u>37,697</u>	<u>15,384</u>
THE FUNDS OF THE CHARITY			
Brought forward funds		15,384	
Movement in year		22,313	
Unrestricted funds		<u>37,697</u>	<u>15,384</u>
		<hr/>	<hr/>
TOTAL CHARITY FUNDS		<u>37,697</u>	<u>15,384</u>
		-	-

Peaches Womb Cancer Trust

**NOTES TO THE FINANCIAL STATEMENTS
FOR THE PERIOD ENDED 1 SEPTEMBER 2022**

1 ACCOUNTING POLICIES

Basis of preparation

The financial statements of the charity, which is a public benefit entity under FRS 102, have been prepared in accordance with the Charities SORP (FRS 102) 'Accounting and Reporting by Charities: Statement of recommended Practice applicable to charities preparing their accounts in accordance with the Financial Reporting Standard applicable in the UK and Republic of Ireland (FRS 102) (effective 1 January 2015)', Financial Reporting Standard 102 'The Financial Reporting Standard applicable in the UK and Republic of Ireland', the Charities Accounts (Scotland) Regulations 2006 and the Charities Act 2011. The financial statements have been prepared under the historical cost convention.

Income

All incoming resources are included in the statement of financial activities when the charity is entitled to the income and the amount can be quantified with reasonable accuracy.

Resources expended

Expenditure has been charged to the income and expenditure account on the accruals basis. The irrecoverable element of VAT is included with the item of expense to which it relates.

Charitable expenditure comprises these costs incurred by the charity in the delivery of its activities and services for its beneficiaries. It includes both costs that can be allocated directly to such activities and those costs of an indirect nature necessary to support them.

Governance costs include those costs associated with meeting constitutional and statutory requirements of the charity and include the fees and costs linked to the strategic management of the charity

1 DONATIONS AND LEGACIES

	2022 £	2021 £
Direct Donations	5,806	1,713
Just Giving		3,525
CAF Donate		1,469
Paypal Giving Fund		1,237
Giving.com		412
Gift Aid		269
Amazon Smile		16
Memory Giving	660	
Legacies	2,000	
	8,466	8,640

2 INCOMING RESOURCES FOR CHARITABLE ACTIVITIES

	2022 £	2021 £
Helen 10k Run		1,108
Funds Raised by WCSUK		2,000
Funds Raised by Womb Cancer Awareness		5,430
Walking for Wombs		1,913
Owned fundraising	7,733	
Community fundraising	5,217	
Corporate fundraising	1,420	
Grants and trusts fundraising	9,606	
Shopping fundraising	322	
	24,298	10,451

Peaches Womb Cancer Trust

NOTES TO THE FINANCIAL STATEMENTS FOR THE PERIOD ENDED 1 SEPTEMBER 2022

3 TOTAL RESOURCES EXPENDED

	Total 2022	Total 2021
	£	£
Costs of generating funds		
Costs of generating voluntary income	2,447	1,308
Fundraising trading: costs of goods sold	-	1,134
Charitable aims	5,766	
Employee costs	1,075	
Total	9,288	2,442
Governance costs		
Account fees	93	79
Research bursary		98
Running costs	1,071	8
Accountancy fee	-	1,080
	1,164	1,265
	10,451	3,707

4 TRUSTEES

None of the trustees (or any persons connected with them) received any remuneration during the period.

5 DEBTORS

	2022	2021
	£	£
Trade debtors	-	268
	-	268

6 Creditors

	2022	2021
	£	£
Accruals	-	1,080
	-	1,080

Independent Examiner's Report

PEACHES WOMB CANCER TRUST INDEPENDENT EXAMINER'S REPORT TO THE TRUSTEES OF PEACHES WOMB CANCER TRUST

I report to the trustees on my examination of the accounts of the charity for the year ended 1 September 2022, which are set out on pages 9 to 12.

Respective responsibilities of trustees and examiner

The charity's trustees are responsible for the preparation of the accounts in accordance with the Charities Act 2011. The charity trustees consider that the audit requirements of section 144 of the Charities Act 2011 do not apply.

It is my responsibility to:

- (i) examine the accounts under section 145 of the Charities Act 2011
- (ii) to follow the procedures laid down in the general Directions given by the Charity Commission under section 145(5)(b) of the Charities Act 2011
- (iii) To state whether particular matters have come to my attention.

Basis of independent examiner's report

My examination is carried out in accordance with the general directions given by the Charity Commission. An examination includes a review of the accounting records kept by the charity and a comparison of the accounts presented with those records. It also includes consideration of any unusual items or disclosures in the accounts and seeks explanations from the trustees concerning any such matters. The procedures undertaken do not provide all the evidence that would be required in an audit, and consequently I do not express an audit opinion on the view given by the accounts.

Independent examiner's statement

In connection with my examination, no matter has come to my attention:

- (a) Which gives me reasonable cause to believe that in any material respect the requirements:
 - (i) to keep accounting records in accordance with section 130 of the Charities Act 2011
 - (ii) to prepare accounts which accord with the accounting records and comply with Regulation 8 of the 2006 Accounts Regulations (as amended) and the requirements concerning the form and content of accounts set out in the Charities (Accounts and Reports) Regulations 2008 of the Charities Act 2011;Have not been met; or
- (b) To which, in my opinion, attention should be drawn in order to enable a proper understanding of the accounts to be reached.



**Paul Mellor ACA
Clarke Nicklin LLP
Chartered Accountants
Clarke Nicklin House
Cheadle Royal Business Park
Cheadle
Cheshire
SK8 3TD**

Dated: 28th June 2023

Financial Review

The accounts have been prepared in accordance with the accounting policies set out in note 1 to the accounts and comply with the charity's governing document, the Charities Act 2011 and the Statement of Recommended Practice, "Accounting and Reporting by Charities", issued in March 2005.

As shown in the Statement of Accounts, Peaches Womb Cancer Trust's income for this second year has been predominantly from donations through different streams, all of which is unrestricted. Another large source of funds was in the form of a grant from GSK to fund the acquisition and distribution of promotional and awareness materials to be sent to CNS teams in hospitals across the country. We are very grateful to GSK for this grant. We were also delighted to receive a grant from the Hospital Saturday Fund to cover some of our running costs and the salary of our first employee.

In order for Peaches Womb Cancer Trust to grow and to further its aims and objectives, more manpower in the form of both volunteers and employees is needed. Our primary focus has been to obtain sufficient resources to fund our first employee. Therefore, the bulk of the income we have received has not yet been spent as it is being saved for this purpose. Our secondary financial focus is to fund a patient support project, an awareness campaign and significant research projects, all of which are extremely costly. Once an employee is in post and we have the time and resources to achieve these projects, funds will be raised for, saved for and spent on carrying out these projects.

Risk Management

The trustees have assessed the major risks to which the charity is exposed, and are satisfied that systems are in place to mitigate exposure to the major risks.

Plans for 2022-2023

Patient Support

In the coming year, we will continue to update our website and social media channels with high-quality, accurate and relevant information for patients. We will continue to host patient information events, beginning with our second “Living Well after Womb Cancer” event in September 2022. This will feature talks from experts in pelvic floor physiotherapy, hormone replacement therapy (HRT) and sexual function after cancer treatment, as well as talks from other charitable organisations who offer services that may be of benefit to our supporters. We will continue to grow and develop our Coffee Mornings and we will increase the frequency of these as demand increases.

We are also planning a large patient support project to provide more information on a wide range of different topics related to womb cancer in an easily accessible format.

Raising Awareness

We will continue and increase the awareness content we post on our social media channels and encourage our supporters to share this. We are also planning a large national awareness campaign to go live in late 2023. We believe that if we can increase the number of people who are aware of the signs and symptoms of womb cancer, and if they know what to do if they have these symptoms, we can catch cancers earlier and reduce the number of women dying of this disease.

Advocacy

We will continue to advocate for womb cancer patients and their loved ones on a national level to #GiveWombCancerAVoice. We will do everything we can as part of the NICE and SMC appraisal process to ensure that the views of those with experience of womb cancer are counted. We hope that this will increase the likelihood of a positive outcome of these appraisals and approval of these vital new treatments.

Promoting Research

We will continue to offer research bursaries to early career researchers presenting their work into womb cancer at conferences to support the future of womb cancer research. Our long-term goal is to fund significant research projects with tangible outcomes, however these are very

costly. We plan to start a fund that will grow over the coming years to allow us to do this in the future.

Peaches Patient Voices

We will continue to grow the Peaches Patient Voices community and its involvement in varied research projects, ensuring that womb cancer research is focused on the needs of the patients. We plan to host PPV webinars, the first of which is in September on the topic of “Womb Cancer Genomics: Research and Patient Benefit”. These webinars will aim to promote the womb cancer research that is going on among those affected by womb cancer and the wider public and inform PPV members about how their involvement makes a real difference to research outcomes.

Organisation

Trustees

After our upcoming AGM, Mrs Rosemary Pike will step down as a Trustee but will continue to volunteer for Peaches. We look forward to welcoming Mrs Helen White and Mr Malcolm Pike as new Trustees.

Helen is a patient volunteer who has done a fantastic job of setting up Peaches Patient Voices this year. We know that the personal experience that she will bring to Peaches will be a huge asset to our Board, ensuring that we remain focused on what is most important to patients.

Malcolm is an employment lawyer, business advisor and non-executive director with over 40 years’ experience in private legal practice. He is currently Chair of Governors at Withington Girls’ School, Vice President and NED of the Greater Manchester Chamber of Commerce, Chair of the Rugby Football League’s Independent Employment Tribunal, a member of the ACAS panel of Independent Arbitrators, and Associate General Counsel - Employment (EMEA) at Associated British Foods plc. We know that Malcolm’s governance, management and legal experience will be very beneficial to our Board.

Over the coming year we will seek to diversify our Board in order to bring in a wider skillset and different experiences. We will particularly look for Trustees with financial, marketing and fundraising experience.

Volunteers

Lilly Pinggera will be stepping down as a volunteer for Peaches as she is relocating to attend medical school. We are enormously grateful for everything that Lilly has done for Peaches over

the last year. She has produced beautiful leaflets, posters and social media posts for us and has helped us at events, including our Peaches and Cream Tea afternoon and at the BGCS Annual Scientific Meeting. She has dramatically increased our social media activity and following and has always been happy to help with any task. We will miss her, but we wish her every success in her career!

We are delighted to welcome a new volunteer to the Peaches team. Dr Molly Riglar is a newly qualified doctor, working at Stoke Hospital. Whilst she was a medical student, Molly was the Social Media Secretary for the University of Manchester Obstetrics and Gynaecology Society. She will be taking over Lilly's role in the creation of our social media posts and managing our social media accounts. We are very grateful to Molly for volunteering her time and we look forward to working with her.

Employees

For the last two years, Peaches Womb Cancer Trust has been entirely run by volunteers who all work full time, with Peaches work being done in our spare time. Thanks to the generosity of our supporters, we have been able to generate sufficient funds this last financial year to allow us to recruit our first employee. We are delighted to welcome Ms Louise Brimble to the Peaches Team as our newly appointed Fundraising and Operations Manager. Louise has a wealth of experience in the charity sector and will start her post in September 2022, working four days per week. We hope that having Louise in our team will really drive Peaches forwards, allowing us to be more responsive to enquiries, deliver more in terms of services for our patients, and increase our awareness work. We also hope to continue this growth and potentially expand our team further by Autumn 2023.

Reference and Administrative Details: Acknowledgements

Peaches Womb Cancer Trust is an independent charitable Trust.

Registered Charity (England and Wales) no. 1190440.

Our registered address is: Peaches Womb Cancer Trust, Clarke Nicklin House, 4 Brooks Drive, Cheadle Royal Business Park, Cheadle, Cheshire, SK8 3TD

Governing Document

Accountants:

Clarke Nicklin
Clarke Nicklin House
4 Brooks Drive
Cheadle Royal Business Park
Cheadle
Cheshire
SK8 3TD

Solicitors:

Addleshaw Goddard LLP
Milton Gate
60 Chiswell Street
London
EC1Y 4AG

Bankers:

CAF Bank
25 Kings Hill Avenue
Kings Hill
West Malling
Kent
ME19 4JQ

www.peachestrust.org

Email: admin@peachestrust.org

Instagram: @peaches_trust Facebook: Peaches Womb Cancer Trust. Twitter: @peachestrust

PEACHES WOMB CANCER TRUST

England & Wales - Charity number 1190440

Accounts



Peaches Womb Cancer Trust
Annual Report and Accounts
2020-2021

Registered Charity Number: 1190440

Table of Contents

Trustees' Report	3
Achievements	3
Structure, Governance and Management.....	5
Charitable Objects	5
Management Structure.....	6
Financial Statement	9
Independent Examiner's Report	13
Financial Review	14
Risk Management	14
Plans for 2021-2022	15
Patient Support.....	15
Raising Awareness	15
Advocacy.....	15
Promoting Research.....	15
Organisation	16
Reference and Administrative Details: Acknowledgements.....	17

Trustees' Report 2020-2021

In early 2020, a group of doctors from Saint Mary's Hospital in Manchester, all with a special interest in womb cancer and research realised that there was no charity dedicated to womb cancer or its research and that there was a great unmet need. Womb cancer is the fourth most common cancer in women, affecting nearly 10,000 women every year in the UK and the numbers are rising. And yet, very few women have heard of womb cancer or know what it is. Additionally, research into womb cancer has long been under-funded compared to other gynaecological cancers such as ovarian and cervical and yet it is more common than them.

In September 2020, Peaches Womb Cancer Trust was established by Professor Emma Crosbie, Dr Eleanor Jones, Dr Chloe Barr, Dr Helen Clarke, Dr Helena O'Flynn and Mrs Rosemary Pike, with the aim of improving the lives of those affected by womb cancer by raising awareness, supporting patients and promoting and funding research. The name comes from the peach-coloured ribbon that represents womb cancer and was inspired by the fact that a group of survivors refer to themselves as "Peach Sisters".

This is our first annual report, and what an extraordinary first year Peaches Womb Cancer Trust has had. Starting up a charity during a world-wide pandemic has thrown up challenges no one could anticipate, however, this has led us to be innovative, creative and flexible in order to raise our profile, our funds and how we fulfil our charitable aims to help those with womb cancer. Virtual meetings and events and remote fundraising have become the new normal, and this year has shown us that we can successfully adapt.

Achievements in our first year

Patient Support and Raising Awareness

Our website, launched in September 2020, contains reliable, up-to-date information for patients. We have a presence across all major social media channels to update our supporters on events that we are hosting and aim to spread the message about womb cancer and its symptoms.

Our first event was held in September 2020 when we hosted a live Q&A on Instagram with Professor of Gynae-oncology and Trustee of Peaches Womb Cancer Trust, Professor Emma Crosbie, focusing on the symptoms and diagnosis of womb cancer. Following this, in May 2021 we held our first virtual awareness event: "Peaches Womb Cancer Trust: My Womb Cancer Story". During this event, one of our supporters, Sally Spencer, shared her womb cancer journey which allowed us to include educational slides around treatment and have a Q&A session. This has inspired "Peaches Patient Stories", where others have shared their own womb cancer journey in the hope that it might be of some comfort and support to readers, as well as increasing awareness. A huge thank you to those women who have shared their experiences, your unique stories and poems will help others feel less alone.

Promoting research

We are proud to have supported two early career researchers to present their work at scientific conferences. Dr Mark Brincat was awarded the Peaches Womb Cancer Trust Blair Bell Bursary 2021 and Olivia Jones, a third-year medical student, presented her work at the International Gynaecologic Cancer Society Global Meeting in August 2021.

Advocating for womb cancer

We were invited to review and provide opinion on the National Institute of Health and Care Excellence (NICE) Consultation: “Dostarlimab for previously treated advanced or recurrent endometrial cancer with high microsatellite instability or mismatch repair deficiency [ID3802]”. We hope that this medication will be approved by NICE in the coming year to give more treatment options to those with advanced or recurrent endometrial cancer.

Earlier in the year, the UK Government made a call for public views to help inform and develop their Women’s Health Strategy with the aim to identify the health care needs of women to improve women’s health care throughout their lives. We supported and circulated this on social media to give our followers a chance to have their voices heard – thank you to all who took part.

A huge thank you

We could not undertake any of our work without the generous donations and hard work of our supporters. Our fundraisers were creative during the pandemic and raised a huge amount of money. We would like to say a massive thank you to all who have held fundraising events and activities.

A special thank you must go to Womb Cancer Awareness and Womb Cancer Support UK. Womb Cancer Awareness have worked tirelessly to raise awareness of womb cancer and an astounding amount of money has been raised in aid of Peaches Womb Cancer Trust. We are very grateful for Sally and Sarah’s hard work and support. Kaz Molloy from Womb Cancer Support UK has done an amazing job of supporting patients over many years, which she continues to do, whilst also championing us at Peaches. Womb Cancer Support UK also donated an amazing sum of money that they had raised to us, which has made a massive difference.

Thank you to all the Trustees who have worked hard over the last year to build the charity, to the volunteers who have helped us enormously to make our first year a success, and to our supporters who continue to donate, fundraise and attend our events.

We are delighted by the success that Peaches has had in its first year and are looking forward to a very bright future for the charity and all of those affected by womb cancer.

Structure, Governance and Management

Peaches Womb Cancer Trust is registered with the Charity Commission no: 1190440. It was established on 16th July 2020 and officially launched on 1st September 2020. This is the first set of accounts the charity has prepared and this set of accounts covers the period from 16th July 2020 to 1st September 2021.

Charitable Objects

The objectives, as set out in the governing document are:

“To relieve sickness and to preserve the health and improve the experience of women with or at risk of womb cancer and their families in the United Kingdom, in particular but not exclusively by; carrying out research, raising awareness and the provision of patient education and support services.”

From 1st April 2018, the Charities Act requires that all charities ensure they meet their charitable objectives and that these are for the public benefit. The Charity Commission in its “Charities and Public Benefit” Guidance states that there are two key principles that must be met:

1. There must be an identifiable benefit
2. The benefit must be for the public or a section of the public.

The Trustees have paid due regard to guidance issued by the Charity Commission in deciding what activities the charity should undertake. The Trustees are satisfied that the aims and objectives of the charity and the activities reported on in this Annual Report meet these principles.

Management Structure

The Charity is run by a Board of six Trustees, who together founded Peaches Womb Cancer Trust. They are:

Professor Emma Crosbie, Chair of Trustees

Professor Crosbie is Professor of Gynaecological Oncology at the University of Manchester and consultant gynaecological surgeon at St Mary's Hospital. Her clinical practice focuses on the fertility-sparing management of endometrial cancer and its precursor lesion, atypical hyperplasia. Her research into the prevention and early detection of womb cancer was recognised through a prestigious National Institute for Health Research (NIHR) Clinician Scientist Fellowship award in 2013 and the Royal College of Obstetricians and Gynaecologists William Blair Bell Memorial Lectureship in 2017. She led the James Lind Womb Cancer Alliance Priority Setting Partnership that identified the top ten most important unanswered research questions in womb cancer, according to patients, carers and healthcare professionals. She is Chair of the Endometrial Subgroup of the National Cancer Research Institute (NCRI) Gynaecology Group, a member of the NCRI Screening, Prevention and Early Diagnosis (SPED) committee, and Early Detection Lead for the Manchester NIHR Biomedical Research Centre. Her research team 'Team Womb', won the NCRI Cancer Research Excellence in Surgical Trials (CREST) award in 2019 for outstanding recruitment to surgical trials.

Professor Crosbie is a busy mum of three who leads a diverse team of enthusiastic scientists and doctors who strive to carry out high quality research that improves the care of women affected by womb cancer. #wombwarriors.

Dr Chloe Barr

Dr Barr is a Specialist Registrar in Obstetrics and Gynaecology currently undertaking a PhD at the University of Manchester investigating novel diagnostic and prognostic biomarkers for gynaecological malignancy. In 2010, she graduated from the University of Liverpool with MBChB honours and commenced the Obstetrics and Gynaecology specialist training programme in 2013. In 2018, she joined the clinical research team at St. Mary's Hospital Manchester, where, in addition to her research, she works clinically looking after and treating women with gynaecological cancers.

She works for Professor Crosbie treating and monitoring women with womb cancer who are unable to undergo surgical treatment, either due to fertility reasons or other medical issues. Her experience as a clinician and researcher has made her passionate about improving services for women with womb cancer, including early detection, prevention and personalised treatment. This inspired her to be a part of the founding team of Peaches Womb Cancer Trust, a charity dedicated to raising awareness about womb cancer and funding ground breaking womb cancer research.

Dr Eleanor Jones

Dr Jones is a Specialist Registrar in Obstetrics and Gynaecology, currently working as a Clinical Research Fellow in Gynaecological Oncology, in the final year of a PhD at the University investigating the early diagnosis of endometrial cancer and how it can be improved. She undertook her medical training at the University of St Andrews (BSc) and then the University of Manchester (MBChB), graduating in 2013. She started specialist training in Obstetrics and Gynaecology in 2015 and came out of her training programme in 2018 to join Professor Crosbie's research team. Eleanor's long-term aim is to have a career as a Gynaecological Oncologist.

Dr Helen Clarke

Dr Clarke studied medicine at Keele University following completion of an undergraduate BSc in Biomedical Science at De Montfort University, Leicester in 2007. She commenced her specialist training in Obstetrics and Gynaecology in 2014 within the Mersey region. In 2016 she was awarded an £18,000 entry level research scholarship from the Wellbeing of Women for research based at University of Liverpool. In 2019 she became a Cancer Research UK Clinical Research Fellow and commenced her PhD at the University of Manchester with Professor Crosbie and Dr Sacha Howell (Christie Hospital, Manchester) developing a clinical trial for cancer risk reduction in both endometrial and breast cancer, using dietary interventions.

Dr Helena O'Flynn

Dr O'Flynn is a General Practitioner working in Manchester following the completion of an Academic Clinical Fellowship training programme and a Masters in Public Health. She has an interest in the early detection of gynaecological cancers in Primary Care and women's health. She graduated from medical school at the University of Manchester and was subsequently awarded an NIHR Doctoral Research Fellowship in 2018 and is undertaking a PhD at the University of Manchester investigating methods of early detection of endometrial cancer as well as awareness of symptoms of endometrial cancer.

Mrs Rosemary Pike

Rosemary is a trustee of Peaches Womb Cancer Trust and is a non-medical member of the team. She is a retired solicitor and was a magistrate for 18 years. Over the years she has been involved in a number of charities, with one of her longstanding roles as a trustee of a large North West children's charity.

Employees

The Charity has had no employees this year.

Volunteers

Mrs Anne Lowry

Anne is a Macmillan Gynaecology Clinical Nurse Specialist at St Mary's Hospital in Manchester. Anne qualified as a nurse and graduated from the University of Northumbria with BSc (Hons) in Nursing Studies in 1997. She has worked within the speciality of gynaecology for most of her career in a variety of roles before becoming a nurse specialist in 2007. This nurse specialist role allows Anne to support women and their families who are affected by gynaecological cancers.

Anne has always had an interest in womb cancer. She completed her MSc in Nursing Studies in 2019 with distinction and focused the modules of this degree towards learning more about the experiences of women with womb cancer and how best to support them. She has also been involved in health promotion events to raise the profile of womb cancer and is very aware through this work that a national charity like Peaches Womb Cancer Trust has a big part to play in improving the outcomes for women with this disease.

Peaches Womb Cancer Trust

**STATEMENT OF FINANCIAL ACTIVITIES
(INCLUDING INCOME AND EXPENDITURE ACCOUNT)
FOR THE PERIOD ENDED 1 SEPTEMBER 2021**

	Notes	Total Funds 2021 £
INCOMING RESOURCES		
Incoming resources from generated funds		
Donations and legacies	1	8,640
Income resources from charitable activities	2	10,451
		<hr/>
Total incoming resources		19,091
		<hr/>
RESOURCES EXPENDED		
Cost of generating funds		
Costs of generating voluntary income		1,308
Fundraising trading: costs of goods sold		1,134
		<hr/>
		2,442
		<hr/>
NET INCOMING RESOURCES AVAILABLE		16,649
		<hr/>
Governance costs	3	1,265
		<hr/>
Total resources expended		3,707
		<hr/>
NET MOVEMENT IN FUNDS		15,384
		<hr/>
TOTAL FUNDS CARRIED FORWARD		15,384
		<hr/>

Peaches Womb Cancer Trust

**BALANCE SHEET
AS AT 1 SEPTEMBER 2021**

		2021
	Note	£
CURRENT ASSETS		
Debtors	5	268
Cash and bank		16,196
		<hr/>
		16,464
CREDITORS: Amounts due within one year	6	(1,080)
TOTAL ASSETS LESS CURRENT LIABILITIES		<hr/> <u>15,384</u>
THE FUNDS OF THE CHARITY		
Unrestricted funds		<hr/> <u>15,384</u>
TOTAL CHARITY FUNDS		<hr/> <u>15,384</u>

Peaches Womb Cancer Trust

NOTES TO THE FINANCIAL STATEMENTS FOR THE PERIOD ENDED 1 SEPTEMBER 2021

1 ACCOUNTING POLICIES

Basis of preparation

The financial statements of the charity, which is a public benefit entity under FRS 102, have been prepared in accordance with the Charities SORP (FRS 102) 'Accounting and Reporting by Charities: Statement of recommended Practice applicable to charities preparing their accounts in accordance with the Financial Reporting Standard applicable in the UK and Republic of Ireland (FRS 102) (effective 1 January 2015)', Financial Reporting Standard 102 'The Financial Reporting Standard applicable in the UK and Republic of Ireland', the Charities Accounts (Scotland) Regulations 2006 and the Charities Act 2011. The financial statements have been prepared under the historical cost convention.

Income

All incoming resources are included in the statement of financial activities when the charity is entitled to the income and the amount can be quantified with reasonable accuracy.

Resources expended

Expenditure has been charged to the income and expenditure account on the accruals basis. The irrecoverable element of VAT is included with the item of expense to which it relates.

Charitable expenditure comprises these costs incurred by the charity in the delivery of its activities and services for its beneficiaries. It includes both costs that can be allocated directly to such activities and those costs of an indirect nature necessary to support them.

Governance costs include those costs associated with meeting constitutional and statutory requirements of the charity and include the fees and costs linked to the strategic management of the charity

1 DONATIONS AND LEGACIES

	2021
	£
Direct Donations	1,713
Just Giving	3,525
CAF Donate	1,469
Paypal Giving Fund	1,237
Giving.com	412
Gift Aid	269
Amazon Smile	16
	8,640

2 INCOMING RESOURCES FOR CHARITABLE ACTIVITIES

	2021
	£
Helen 10k Run	1,108
Funds Raised by WCSUK	2,000
Funds Raised by Womb Cancer Awareness	5,430
Walking for Wombs	1,913
	10,451

Peaches Womb Cancer Trust

NOTES TO THE FINANCIAL STATEMENTS
FOR THE PERIOD ENDED 1 SEPTEMBER 2021

3 TOTAL RESOURCES EXPENDED

	Total 2021 £
Costs of generating funds	
Costs of generating voluntary income	1,308
Fundraising trading: costs of goods sold	<u>1,134</u>
Total	2,442
Governance costs	1,265
	<hr/>
	- - <u>3,707</u>

4 TRUSTEES

None of the trustees (or any persons connected with them) received any remuneration during the period.

5 DEBTORS

	2021 £
Trade debtors	<u>268</u>
	<u>268</u>

6 Creditors

	2021 £
Accruals	<u>1,080</u>
	<u>1,080</u>

EXAMINED AND FOUND CORRECT, SIGNED ON BEHALF OF THE BOARD OF TRUSTEES:

CHLOE BARR, Hon Examiner



22nd June 2022

ELEANOR JONES, Hon Treasurer



22nd June 2022

**PEACHES WOMB CANCER TRUST
INDEPENDENT EXAMINER'S REPORT
TO THE TRUSTEES OF PEACHES WOMB CANCER TRUST**

I report to the trustees on my examination of the accounts of the charity for the year ended 1 September 2021, which are set out on pages 9 to 12.

Respective responsibilities of trustees and examiner

The charity's trustees are responsible for the preparation of the accounts in accordance with the Charities Act 2011. The charity trustees consider that the audit requirements of section 144 of the Charities Act 2011 do not apply.

It is my responsibility to:

- (i) examine the accounts under section 145 of the Charities Act 2011
- (ii) to follow the procedures laid down in the general Directions given by the Charity Commission under section 145(5)(b) of the Charities Act 2011
- (iii) To state whether particular matters have come to my attention.

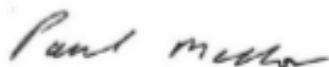
Basis of independent examiner's report

My examination is carried out in accordance with the general directions given by the Charity Commission. An examination includes a review of the accounting records kept by the charity and a comparison of the accounts presented with those records. It also includes consideration of any unusual items or disclosures in the accounts and seeks explanations from the trustees concerning any such matters. The procedures undertaken do not provide all the evidence that would be required in an audit, and consequently I do not express an audit opinion on the view given by the accounts.

Independent examiner's statement

In connection with my examination, no matter has come to my attention:

- (a) Which gives me reasonable cause to believe that in any material respect the requirements:
 - (i) to keep accounting records in accordance with section 130 of the Charities Act 2011
 - (ii) to prepare accounts which accord with the accounting records and comply with Regulation 8 of the 2006 Accounts Regulations (as amended) and the requirements concerning the form and content of accounts set out in the Charities (Accounts and Reports) Regulations 2008 of the Charities Act 2011;Have not been met; or
- (b) To which, in my opinion, attention should be drawn in order to enable a proper understanding of the accounts to be reached.



**Paul Mellor ACA
Clarke Nicklin LLP
Chartered Accountants
Clarke Nicklin House
Cheadle Royal Business Park
Cheadle
Cheshire
SK8 3TD
Dated: 21st June 2022**

Financial Review

The accounts have been prepared in accordance with the accounting policies set out in note 1 to the accounts and comply with the charity's governing document, the Charities Act 2011 and the Statement of Recommended Practice, "Accounting and Reporting by Charities", issued in March 2005.

As shown in the Statement of Accounts, Peaches Womb Cancer Trust's income for this first year has been entirely from donations through different streams. All of this is unrestricted. Funds have been spent on the set-up costs of the charity and procuring merchandise to support fundraising efforts.

In order for Peaches Womb Cancer Trust to grow and to further its aims and objectives, more manpower in the form of both volunteers and employees is needed. Our primary focus for the coming financial year is obtain sufficient resources to fund our first employee. Therefore, the bulk of the income we have received has not yet been spent as it is being saved for this purpose. Our secondary financial focus is to fund both an awareness campaign and significant research projects, both of which are extremely costly. Therefore, once an employee is in post, we will use future surplus as dedicated reserves to be saved for these purposes.

Risk Management

The trustees have assessed the major risks to which the charity is exposed, and are satisfied that systems are in place to mitigate exposure to the major risks.

Plans for 2021-2022

Patient Support

We will continue to update our website and social media channels with high-quality, accurate and relevant information for patients.

We will host patient information events, beginning with our “Living Well with Womb Cancer” event in September 2021 to mark Womb Cancer Awareness Month. This will feature talks from experts in nutrition, psychology, pelvic physiotherapy and sexual function and the personal journey of one of our supporters. We hope that this event will give those who have had or are currently receiving treatment up-to-date and expert advice on recovery and wellness that will help them in their journey.

We also plan to start hosting virtual “Coffee Morning” support sessions to connect patients to others who are going through similar experiences for mutual support.

Raising Awareness

We plan to work with large companies to offer employee educational talks on womb cancer to raise awareness of the risk factors, early symptoms and diagnosis. We have been invited to speak to the UK employees of GlaxoSmithKline (GSK) in September 2021 and Addleshaw Goddard LLP in December 2021.

Advocacy

We will continue to advocate for womb cancer patients and their loved ones on a national level to #GiveWombCancerAVoice.

Promoting Research

In Autumn 2021 we plan to launch Peaches Patient Voices, a group of people with lived experience of womb cancer who are keen to be involved in research. We will connect the group to researchers looking for patient and public involvement in their work. We hope that doing this will promote the womb cancer research that is going on and ensure that research it is focused on the needs of patients.

We will continue to offer research bursaries to early career researchers presenting their work into womb cancer at conferences to support the future of womb cancer research. Our long-term goal is to fund significant research projects with tangible outcomes, however these are very costly. We will start a fund that will grow over the coming years to allow us to do this in the future.

Organisation

Volunteers

We look forward to welcoming three new volunteers to the Peaches Team:

[Mrs Helen White](#), a patient volunteer, has kindly offered to help us to establish the Peaches Patient Voices group. We know that the personal experience she will bring to Peaches will be a huge asset and will ensure that we remain focused on what is most important to patients.

[Miss Lilly Pinggera](#) has offered to run our social media channels and to help us with the production of promotional materials. This will allow us to post more regular content, to increase our engagement and to ensure consistency with our styling.

We are delighted that [Mrs Harriet Hirst](#) has offered to help us as our website developer. This will ensure that our website is kept up-to-date and will mean that our precious resources can be spent on what matters most to our supporters.

We are very grateful to all of our new volunteers for their assistance and we look forward to working with them in the coming year.

Trustees

We will look to diversify our Board over the next year in order to bring in a wider skillset and different experiences.

Employees

Peaches Womb Cancer Trust is currently run entirely by volunteers who all work full time, so Peaches work is being done in our spare time. In order to grow Peaches and to fulfil its aims, we need paid employees whose time can be dedicated to this. Our aim in the coming year is to generate sufficient funds that we can recruit our first Peaches employee. We hope to have an employee in post by the Autumn of 2022.

Reference and Administrative Details: Acknowledgements

Peaches Womb Cancer Trust is an independent charitable Trust.

Registered Charity (England and Wales) no. 1190440.

Our registered address is: Peaches Womb Cancer Trust, Clarke Nicklin House, 4 Brooks Drive, Cheadle Royal Business Park, Cheadle, Cheshire, SK8 3TD

Governing Document

Accountants:

Clarke Nicklin
Clarke Nicklin House
4 Brooks Drive
Cheadle Royal Business Park
Cheadle
Cheshire
SK8 3TD

Solicitors:

Addleshaw Goddard LLP
Milton Gate
60 Chiswell Street
London
EC1Y 4AG

Bankers:

CAF Bank
25 Kings Hill Avenue
Kings Hill
West Malling
Kent
ME19 4JQ

www.peachestrust.org

Email: admin@peachestrust.org

Instagram: @peaches_trust Facebook: Peaches Womb Cancer Trust. Twitter: @peachestrust