



# WAVE FOR CHANGE ANNUAL REPORT 2023 - 2024

Enabling places where We're All Valued Equally

Registered Charity Number: 1190354  
Trustees' Annual Report and Financial Statements - Year to 30 June 2024

---

This year we have continued to focus on our three strategic pillars of ***Inspiring, Encouraging*** and ***Enabling*** mixed ability activities and events to happen in more communities. We have grown the number of WAVE groups (from 10 to 13) and made preparations for further growth.

We've continued to raise our profile, most significantly via our very successful LIVING WITH exhibition and FUNdraising event and a [new video](#). Through these, various conferences and publications, and our social media presence, as well as personal connections, we have received enquiries from a number of potential WAVEmakers. In order to help those interested in having a WAVE group in their community, we're now offering Taster events supported by our motivated, London-based, mixed-ability team.

A focus this year has been on stabilising our finances (including attracting funding to support the Tasters) and staffing for growth. We now have a Relationships Manager who supports existing WAVEmakers and encourages potential ones, in addition to an Operations Manager. We're also recruiting a new CEO/Director to see the organisation through its next phase of growth.

We are motivated by the feedback from the various WAVE inclusive worship and social groups, showing the positive impact mixed-ability groups have on all participants.

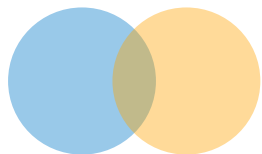


Anchal Gupta & Ian Hardie *Co-Chairs of Trustees*

---



People with and without  
learning disabilities



Working together



To create more inclusive  
communities



# CONTENTS

1. ABOUT WAVE
2. OUR FOCUS THIS YEAR (2023 - 2024)
3. OUR REACH AND IMPACT
4. THANKS TO OUR SUPPORTERS
5. OUR PLANS FOR 2024 - 2025
6. FINANCIAL SUMMARY

## APPENDICES

TRUSTEES & RESPONSIBILITIES

LEGAL & ADMINISTRATION INFORMATION

TRUSTEE DECLARATION

CONSTITUTION

THEORY OF CHANGE

REVIEWED ACCOUNTS

---

# ABOUT WAVE

WAVE stands for We're All Valued Equally. We want to see more places where people with and without learning disabilities (LD) can comfortably mix and enjoy each other's company as equals. Our approach is to do things with, not for, each other.

We have seen time and time again how genuinely inclusive places transform negative attitudes around learning disability – both at the personal and community level.

## **WHY OUR WORK IS NEEDED**

- Research shows that mixed-ability social interactions help to overcome anxiety and lack of confidence around people who are 'different' to us
  - Most people currently have little or no experience of mixing with individuals of different abilities because there are few places in communities that make this easy to do - people with a learning disability can be as anxious about this as those without
  - The majority of adults with and without learning disabilities are however open to the idea of joining in with mixed-ability activities – we need more places in communities that do this.
-

# HOW OUR PARTICIPANTS DESCRIBE WAVE



# WHAT WE DO

We **share** our story to raise awareness of the need for and benefits of mixed ability social and worship places via relevant **media and conference platforms**



We **inspire** others to adopt our 'all valued equally' ethos to start regular inclusive initiatives - building a **network of 'WAVEmakers'**



We **show** our ethos in action, working with mixed teams to bring people with & without LD together at **'WAVE Taster Events'**





# WHAT WE DO

We **inspire, encourage and enable** those who want to start vibrant inclusive social and worship groups in their communities – places where everyone is valued equally. People most likely to be aware of this need include individuals with learning disabilities, their family members, friends, teachers and other professionals who work in the area of disability, as well as community workers in places of worship.

We aim to **inspire and encourage** new WAVEmakers to work with interested people/organisations to help understand their community needs, to identify ways to create all-inclusive groups, and to be confident and capable to continue building these mixed-ability connections in the long run.

To **enable** this we:

- share our learnings and practical tips/templates via our comprehensive WAVE in a Box (an online resource that condenses over a decade of experience into practical guidance and templates)
  - connect them with other existing/potential WAVEmakers to discuss questions and concerns. We organize WAVEmaker forums on a quarterly basis to connect potential and current WAVEmakers, and we offer support on an ongoing basis
  - offer our mixed-ability team to work alongside partners and potential WAVEmakers to plan and execute Taster events in their communities
-



# OUR FOCUS THIS YEAR in 2023-2024

**In 22/23 we set ourselves 5 areas of focus:**

1. Promote our All Valued Equally ethos to inspire more mixed-ability activities
2. Recruit more WAVEmakers and support them with regular WAVEmaker forums
3. Continue to build a mixed-ability team to support WAVE Tasters and other events
4. Strengthen our central team through recruitment as we grow
5. Hold a major fundraising event and continue to apply for grants

**The following pages will tell you more about our progress**



# OUR FOCUS THIS YEAR

## 1. PROMOTE OUR 'ALL VALUED EQUALLY' ETHOS TO INSPIRE MORE MIXED-ABILITY ACTIVITIES

An exhibition of photographic portraits of WAVE's Challenge Group children, many taken with a sibling, was the central element of our LIVING WITH exhibition at Alexandra Palace. The very successful exhibition, and events around it, were a real celebration of mixed-ability families, and a great way to share the work of WAVE with a wider audience. The exhibition subsequently did its first 'on tour' installation at North London's Whittington Hospital.

*"It was wonderful and encouraging and many of us left with renewed energy to pursue our common goal in creating a truly inclusive community"*



# OUR FOCUS THIS YEAR

## 2. RECRUIT MORE WAVEMAKERS AND SUPPORT THEM WITH REGULAR WAVEMAKER FORUMS

Three new groups joined the WAVEmaker family this year – in Ballyclare (Co Antrim), Leicester and Ipswich. An existing group in Darlington expanded with a group holding social events in addition to their existing WAVE Church group.

We've continued holding quarterly, well attended and well received, WAVEmaker forums for those exploring or already running inclusive groups. One was in person; the others online. These allow for mutual learning, encouragement and cross-promotion. We're building momentum around the idea of a WAVE network affecting wider community/societal change, groups keep records of their activities, and we interview leaders & participants annually (Impact Report on P. 15)



# OUR FOCUS THIS YEAR

## 3. CONTINUE TO BUILD A MIXED-ABILITY TEAM TO SUPPORT WAVE TASTER AND OTHER EVENTS

We know it can be daunting to start a WAVE-style group from scratch so we've been encouraging the idea of WAVE Taster events where we can share advice and resources and, if close to London, help from our mixed-ability team.

This team has worked together this year to plan and support WAVE events and two up-coming Tasters in Summer/Autumn 2024.

*"I've found WAVE to be an inclusive, caring and welcoming place where I feel I can fulfil my potential and challenge myself."*





# OUR FOCUS THIS YEAR

## 4. STRENGTHEN OUR CENTRAL TEAM THROUGH RECRUITMENT AS WE GROW

As the WAVE network has grown – we now have 13 groups around the UK – we’ve expanded our central team. Our WAVEMakers are supported by a Relationships Manager and we have a new Operations Manager (both part-time).

The CEO who joined us in the summer of ‘23 had to leave after a few months for personal reasons but despite this setback the team pulled together and achieved a lot during the year. We then engaged professional head-hunters to find a new CEO who is due to take up the position in August ‘24.



# OUR FOCUS THIS YEAR

## 5. HOLD A MAJOR FUNDRAISING EVENT AND CONTINUE TO APPLY FOR GRANTS

One of our values is 'fun' and our mixed-ability team we had a very successful wine and cheese tasting FUNdraiser in November, netting almost £15k.

A mixed-ability team ran the event and, along with a [new WAVE video](#), it was a wonderful way of sharing our ethos with a largely new audience.

*“Doing different things with different people expands your thinking, promotes inclusivity and understanding and is fun”*

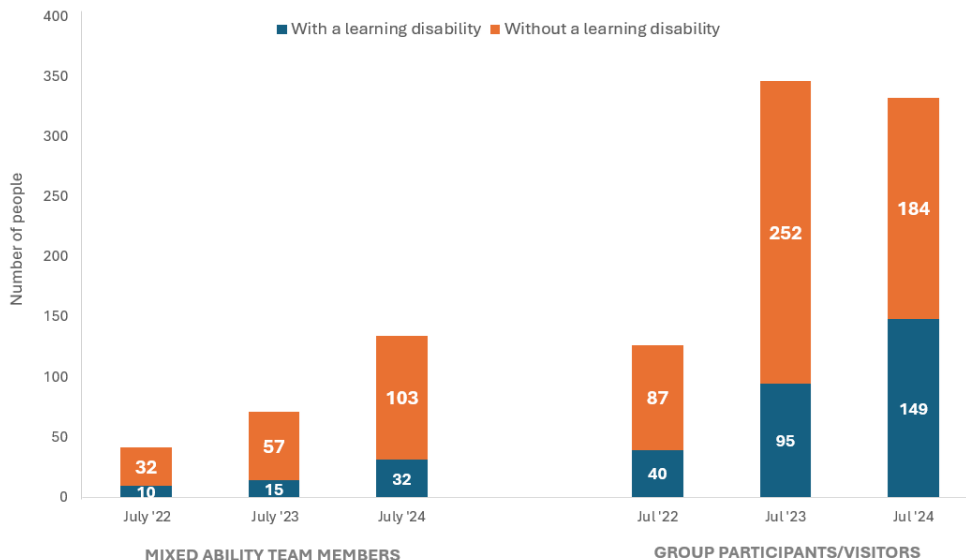


# OUR REACH & IMPACT

As a result of new WAVE groups and growth within our existing groups, we now have:

- 135 mixed-ability team members (32 with a learning disability) - an 88% increase since last year and over three times our July 2022 figure
- Over 330 people mixing together at WAVE groups each month with the most significant increase in participation being among individuals with a learning disability (up 50% on last year and three times 2022) - reflecting the fact that a number of social spaces previously frequented (libraries/day centres etc.) are now closing.
- Participants tell us that WAVE provides much needed places for those with & without learning disabilities to make new connections & build friendships.

Connections being made through WAVE each month



Behind these statistics are individuals and groups who feel the very real benefits of places where people of all abilities can spend time together as equals.



# OUR REACH & IMPACT



## **WAVE DARLINGTON**

The WAVE Darlington group have been running a WAVE Church since 2022. This year they also started a social event, an inclusive coffee morning which they called 'Challenging the Stereotypes', because *"this is what we hoped to do by using mixed-ability teams in all aspects of the coffee morning. The feedback we received was overwhelmingly positive. The mixed-ability team worked well together, customers were surprised at their abilities and we saw attitudes being changed."*



## **WAVE LITTLE ILFORD**

WAVE Little Ilford have gone from strength to strength this year, adding new members as well as speaking at other new churches. An Art School open day in May was followed by Art School session twice a week and this will lead to an exhibition in late 2024. There are plans to grow the faith based activities with a small group bible study. *"We should all be equal and we are in God's eyes. It's important to share the gospel with everyone"*



## **WAVE HUB MUSWELL HILL (previously WAVE Café)**

WAVE Hub continues to grow with additional activities (art and fitness) on offer. *"Our 'with not for' ethos isn't just a slogan, we see it in action every Thursday when our mixed-ability team works together. Everyone has a meaningful role and contributes to our success in their own way. The proof is in our numbers - we have an exceptionally strong base of regular participants. People simply enjoy being here! Most importantly, we all have fun together - we're building a truly inclusive community where everyone belongs."*

# THANK YOU TO OUR SUPPORTERS

We are grateful to the small but loyal number of personal donors who have regularly contributed to our work and to those who felt moved to support us with generous ad-hoc donations this year.

We have been very grateful for grants from:

- The Postcode Lottery (for the LIVING WITH photographic exhibition)
- London Catalyst and Awards for All (for our Tasters programme)
- The Charitable Trust who gave us £16,680 for the second year to help cover staffing costs

We also thank:

- Award-winning photographer Kristina Varaksina for the photographs of children from WAVE's Challenge Group which formed our LIVING WITH exhibition
- Alexandra Palace for their support and hosting of the LIVING WITH exhibition
- Moët Hennessy UK who generously sponsored and supported our wine and cheese tasting FUNdraising evening

# OUR PLANS FOR July 2024 to June 2025

**We have set ourselves 5 areas of focus for the year ahead:**

- 1. Onboard our new CEO** : we want to grow and provide more opportunities for mixing so we know we need to strengthen our central team in order to build on the team's work to date adding experience and new ideas to increase our impact
- 2. Reach and Recruit WAVEmakers** : we are determined to increase the number of WAVEmakers as well as working closely with our current WAVEmakers and Groups to help sustain and enhance their reach and influence.
- 3. Promote our All Valued Equally ethos** : to inspire more mixed-ability activities we aim to promote and re-mount our LIVING WITH exhibition as part of our overall external communications and awareness raising strategy.
- 4. Broaden our sources of funding** : we can only support our plans to increase the number of groups if we have with enough money to support our work. We aim to increase our number of Regular supporters as well as mounting another major fundraising event and continuing to apply for grants
- 5. Revitalise Wave in Box** : working closely with current and potential WAVEmakers we will review and enhance the resources we can share with WAVEmakers in order encourage and enable new Groups with a revitalised WAVE in a Box.

**We look forward to reporting on progress in more detail in our next Annual report**

# FINANCIAL SUMMARY

WAVE for Change started the year (July '23) with an opening cash balance of £19,166.

We are very grateful for the generous financial support we had in the year from both our regular and ad hoc donors, raising £92,740 mainly via a mix of Donations (£38,283), Grants (£39,280) and a very successful FUNdraising event (£14,575). This is overall significantly higher than the previous year, growing our income almost 3 times. We also benefited from a Trustee volunteering as a full-time CEO for several months.

We invested £50,904 over the year – key elements being Staff £10,645, Operations £8,299 and Core Projects £31,960 (LIVING WITH Exhibition, Mixed Ability Team, WAVEmakers and Impact Tracking).

As of 30th June 2024, WAVE for Change's balance of funds was £61,002. These funds are mainly unrestricted and available to be used in accordance with our charitable objectives at the discretion of the Trustees. It is our policy to maintain a balance of at least three months' cash reserves to cover operating expenses, a policy that we have maintained successfully throughout the year. This prudent approach to carefully managing our resources will be maintained as we seek to grow our activities and move to a mix of more permanently employed staff and volunteers.

We built a strong balance to be able to invest in paid staff to support our next phase of growth and to fund core projects that are directly linked to our charitable aims e.g. WAVE in a Box, running Tasters to link with potential WAVEmakers as well as supporting our growing network of WAVEmaker led groups. We aim to raise further required funds from a combination of increased regular giving, ad-hoc fundraising campaigns and targeted charity grants from Trusts and other Funders. Reaching out to our personal networks, running fundraising events and improving supporter communications will be key to enabling this.

# APPENDICES

## TRUSTEES AND RESPONSIBILITIES

The trustees are responsible for keeping sufficient accounting records that disclose with reasonable accuracy at any time the financial position of the charity and which enable them to ensure that the accounts comply with the Charities Act 2011, the Charity (Accounts and Reports) Regulations 2008. They are responsible for safeguarding the assets of the charity and hence taking reasonable steps for the prevention and detection of fraud and other irregularities.

Declaration: The trustees declare that they have approved the Trustees' Report, signed on behalf of the Charity's Trustees.

**Full name**

**Signed**

**Position**

**Date**

Ian Hardie

Co-Chair

30th November

A handwritten signature in dark ink, appearing to read 'Ian Hardie', written over a faint horizontal line.

# LEGAL AND ADMINISTRATION INFORMATION

Charity name	WAVE for Change
Charity number	1190354
Operating address	35 Windermere Road, London, N10 2RD
Website	<a href="http://waveforchange.org.uk">waveforchange.org.uk</a>

Name	Office	Appointed	Resigned
Ian Hardie	Co-chair	18.05.2020	
Anchal Gupta	Co-chair	05.05.2021	
Stephanie Buckingham	Trustee	18.05.2020	
Toby Morrison	Trustee	18.05.2020	
Ingrid Skinner	Trustee	18.05.2020	
Ellie Williams	Trustee	20.10.2020	01.07.2023
Graeme Salt	Trustee/Treasurer	16.02.2022	13.03.2024
Max Wanless	Trustee/Treasurer	13.03.2024	

# TRUSTEE DECLARATION

The trustees declare that they have complied with their duty to have due regard to the guidance on public benefit published by the commission in exercising their powers or duties.

The trustees are reporting the financial activities of the charity on a 'Receipts and Payments' basis using a template recommended by the Charity Commission for small non-company charities with a gross income of £250,000 or less.

WAVE is governed by a board of trustees with co-chairs. One of the Trustees has taken on the role as temporary CEO while we recruit. We have A Relationships Manager who takes responsibility for our relationship with new and prospective WAVE groups and an Operations Coordinator. Finally, we rely on a mix of volunteers and contractors.

New trustees receive a copy of the constitution, accounts and latest trustees' meeting minutes. They are interviewed by both co-chairs and one of the founders, and they attend one trustees' meeting as guests/observer prior to their appointment being confirmed by a vote of current trustees.



# CONSTITUTION

The object of the CIO, which is to be carried out, working inclusively with those of all faiths or none, is:

To promote equality and diversity for the public benefit, in such geographical areas as the trustees shall determine, by working with people with and without learning disabilities to reduce discrimination based on abilities and foster an environment in which social places are genuinely inclusive and accessible to all, in particular, but not exclusively by:

1. Raising awareness among the general public of the need to equally value people of all abilities
2. Promoting inclusivity through the establishment of inclusive and accessible mixed-ability worship and social gatherings(which will reduce social segregation/isolation and build friendships, whether undertaken digitally or in person)
3. Promoting the establishment of inclusive and accessible mixed-ability social groups that co-create community-based activities where people with and without learning disabilities are encouraged to do things with and not for each other
4. Providing advice and support (based on the charity's own research) to organisations and individuals seeking to develop inclusive and accessible mixed-ability groups and activities.

**Our Values : In Faith & Love : Simply : Having fun : Creatively : Inclusively : Safely**

# WAVE FOR THEORY OF CHANGE

## OUR THEORY OF CHANGE IS A VISUAL REPRESENTATION OF WHAT WE DO AND AIM TO ACHIEVE.

By mapping this out, we can identify all our activities and the people we reach.  
Our ToC shows how our work impacts on individuals, communities and wider society.

### In this ToC **WAVE'S ACTIVITIES** include

Raising awareness of the (personal and community) issues that arise through social segregation and of our All Valued Equally ethos  
Working with mixed-ability teams to demonstrate our With Not For approach at WAVE taster events  
Sharing our stories and impact to motivate potential Wavemakers and supporters  
Enabling committed Wavemakers to set up new inclusive initiatives more easily

### In this ToC **WAVE'S OUTPUTS** include

Wider engagement with/appreciation of the All Valued Equally ethos and With Not For approach  
Mutual understanding and confidence grows through enjoyable social interactions  
More empowered, better-equipped Wavemakers.  
More genuinely inclusive activities in more places.

### In this ToC **WAVE'S OUTCOMES** include

Less social segregation  
More enjoyable and safe mixed-ability events and activities  
More people with learning disabilities contributing to community life/having sense of belonging  
Fewer people without learning disabilities ignoring/misunderstanding/avoiding those with LD.

### In this ToC **WAVE'S IMPACT** includes

More social connection between people with and without learning disabilities in community  
More mixed-ability friendships  
Less ignorance/anxiety/stigma around learning disability  
Greater appreciation and commitment to community centred approaches

**WE VALUE ALL  
EQUALLY**

Starting in faith and love,  
we are open to everyone.

**WE ARE INCLUSIVE**

We remove barriers so  
everyone can understand  
and join in. We protect  
the vulnerable among us.

**SHIFTING BEHAVIOUR  
SHIFTS ATTITUDES**

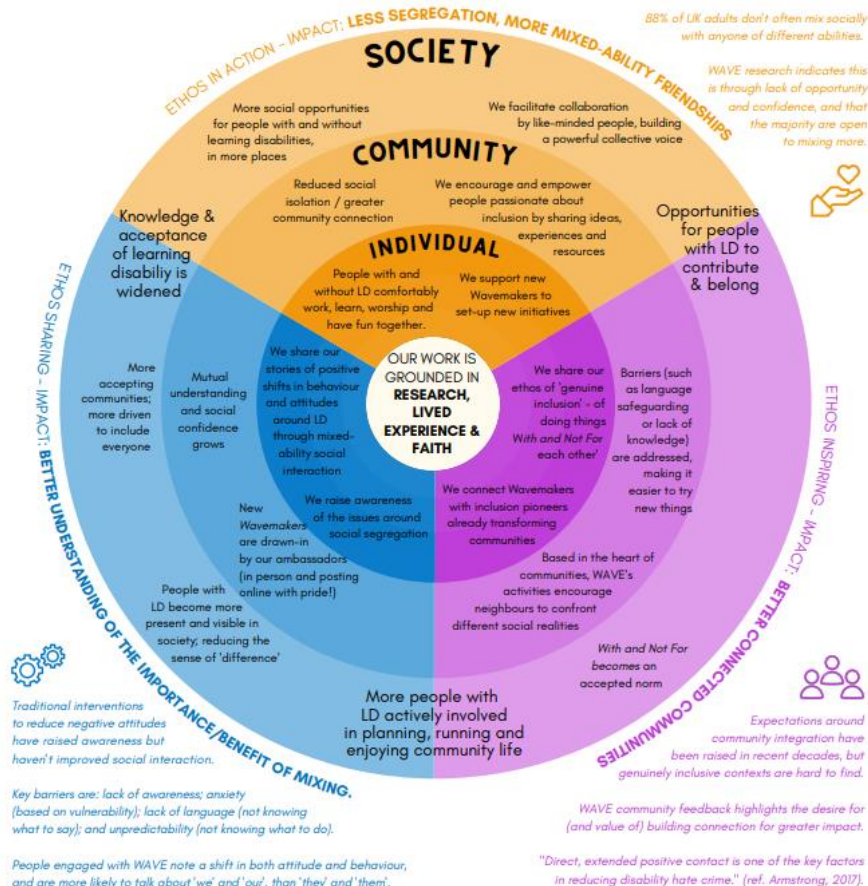
We don't focus on education  
or campaigning - we  
change expectations  
by having fun together.

**WITH AND NOT FOR**

We participate together on  
an equal footing - not as  
'beneficiaries' or 'service  
users' or 'volunteers'.

OUR VISION IS OF **INCLUSIVE 'MIXED-ABILITY' COMMUNITIES**,  
WHERE WE **EXPERIENCE LIFE TOGETHER** AND ARE **ALL VALUED EQUALLY**.

WHY? Social segregation between people with and without learning disabilities leads to anxiety, fear and prejudice, limited social possibilities, and social isolation. Not everyone has the choice or opportunity to join in community life fully.





CHARITY COMMISSION  
FOR ENGLAND AND WALES

## Wave For Change

### Receipts and payments accounts

CC16a

For the period from 1/7/2023 To 30/6/2024

#### Section A Receipts and payments

	Unrestricted funds to the nearest £	Restricted funds to the nearest £	Endowment funds to the nearest £	Total funds to the nearest £	Last year to the nearest £
<b>A1 Receipts</b>					
Donations Regular	7,120	-	-	7,120	6,593
Donations Ad hoc	31,193	-	-	31,193	2,201
Campaigns	14,876	-	-	14,876	391
Grants	-	39,390	-	39,390	16,393
Gift Aid	616	-	-	616	-
Bank income	87	-	-	87	44
<b>Sub total (Gross income for A1)</b>	<b>53,460</b>	<b>39,390</b>		<b>92,740</b>	<b>32,471</b>

**A2 Asset and investment sales** (see table).

<b>Sub total</b>					
<b>Total receipts</b>	<b>53,460</b>	<b>39,390</b>		<b>92,740</b>	<b>32,471</b>

**A3 Payments**

Staff	10,646	-	-	10,646	15,447
New staff costs	1,593	-	-	1,593	1,803
Freelancing costs	2,356	-	-	2,356	2,063
Marketing/PRE-Social media	4,341	-	-	4,341	3,341
Projects - LIVING WITH Exhibition (AP Exhibition)	-	16,026	-	16,026	3,476
Projects - MAC	-	5,351	-	5,351	5,351
Projects - WAVEnetters and Forums	-	8,909	-	8,909	6,951
Projects - RTP Impact Tribunal	2,274	-	-	2,274	-
Projects - Any Play 100 Year celebration	-	-	-	-	6,026

<b>Sub total</b>	<b>21,319</b>	<b>29,885</b>		<b>50,604</b>	<b>46,131</b>
------------------	---------------	---------------	--	---------------	---------------

**A4 Asset and investment purchases**, (see table)

<b>Sub total</b>					
<b>Total payments</b>	<b>21,319</b>	<b>29,885</b>		<b>50,604</b>	<b>46,131</b>
<b>Net of receipts (payments)</b>	<b>32,241</b>	<b>9,494</b>		<b>41,836</b>	<b>12,609</b>
<b>A5 Transfers between funds</b>					
<b>A6 Cash funds last year end</b>	<b>18,719</b>	<b>307</b>		<b>19,166</b>	<b>31,826</b>
<b>Cash funds this year end</b>	<b>51,240</b>	<b>9,942</b>		<b>61,002</b>	<b>19,166</b>

#### Section B Statement of assets and liabilities at the end of the period

Categories	Details	Unrestricted funds to nearest £	Restricted funds to nearest £	Endowment funds to nearest £
<b>B1 Cash funds</b>				
	<b>Total cash funds</b>	<b>61,040</b>	<b>9,942</b>	<b>-</b>
		<b>61,040</b>	<b>9,942</b>	<b>-</b>
<small>(Signe balances with receipts and payments accounts)</small>				
<b>B2 Other monetary assets</b>				
Details				
<b>B3 Investment assets</b>				
Details				
<b>B4 Assets retained for the charity's own use</b>				
Details				
Staff IT (approx)				
<b>B5 Liabilities</b>				
Details				

Signed by one of two trustees on behalf of all the trustees

Signature

Print Name

Date of approval

I J HAROLD

30/11/2024

M WANLESS

30/11/2024



# INDEPENDENT EXAMINER'S REPORT

**Independent examiner's report to the trustees of Wave for Change (the 'Charity'),  
a community interest company**

I report to the trustees on my examination of the accounts of the Charity for the year ended 30 June 2024.

**Responsibilities and basis of report**

As the trustees of the Charity, you are responsible for the preparation of the accounts in accordance with the requirements of the Charities Act 2011 ('the Act').

I report in respect of my examination of the Charity's accounts carried out under section 145 of the Act. In carrying out my examination I have followed all applicable directions given by the Charity Commission under section 145(5)(b) of the 2011 Act.

**Independent examiner's statement**

I have completed my examination. I confirm that no material matters have come to my attention in connection with the examination giving me cause to believe that in any material respect:

1. accounting records were not kept as required by section 130 of the Act; or
2. the accounts do not accord with those records.

I confirm that there are no matters to which your attention should be drawn to enable a proper understanding of the accounts to be reached.




Ian Whitehead

Member of The Institute of Chartered Accountants in England and Wales

1 Vallance Road, London N22 7UD

30 November 2024

	<b>CHARITY COMMISSION FOR ENGLAND AND WALES</b>	<b>Wave For Change</b>			<b>CC16a</b>
	<b>Receipts and payments accounts</b>				
	For the period from	1/7/2023	To	30/6/2024	

**Section A Receipts and payments**

	Unrestricted funds	Restricted funds	Endowment funds	Total funds	Last year
	to the nearest £	to the nearest £	to the nearest £	to the nearest £	to the nearest £

<b>A1 Receipts</b>					
Donations Regular	7,120	-	-	7,120	6,563
Donations Ad hoc	31,163	-	-	31,163	7,201
Campaigns	14,575	-	-	14,575	281
Grants	-	39,280	-	39,280	18,383
Gift Aid	515	-	-	515	-
Bank income	87	-	-	87	44
<b>Sub total (Gross income for AR)</b>	<b>53,460</b>	<b>39,280</b>	<b>-</b>	<b>92,740</b>	<b>32,471</b>

<b>A2 Asset and investment sales, (see table).</b>					
	-	-	-	-	
<b>Sub total</b>	<b>-</b>	<b>-</b>	<b>-</b>	<b>-</b>	<b>-</b>
<b>Total receipts</b>	<b>53,460</b>	<b>39,280</b>	<b>-</b>	<b>92,740</b>	<b>32,471</b>

<b>A3 Payments</b>					
Staff	10,645	-	-	10,645	15,447
Non staff costs	1,563	-	-	1,563	1,860
Fundraising costs	2,395	-	-	2,395	2,063
Marketing/PR/Social media	4,341	-	-	4,341	2,357
Projects : LIVING WITH Exhibition (AP Exhibition)	-	15,425	-	15,425	3,475
Projects : MAT	-	5,351	-	5,351	6,951
Projects : WAVEmakers and Forums	-	8,909	-	8,909	6,951
Projects : RTR Impact Tracker	2,274	-	-	2,274	-
Projects : Ally Pally 150 Year celebration	-	-	-	-	6,026
<b>Sub total</b>	<b>21,219</b>	<b>29,685</b>	<b>-</b>	<b>50,904</b>	<b>45,131</b>

<b>A4 Asset and investment purchases, (see table)</b>					
	-	-	-	-	
<b>Sub total</b>	<b>-</b>	<b>-</b>	<b>-</b>	<b>-</b>	<b>-</b>
<b>Total payments</b>	<b>21,219</b>	<b>29,685</b>	<b>-</b>	<b>50,904</b>	<b>45,131</b>
<b>Net of receipts/payments</b>	<b>32,241</b>	<b>9,595</b>	<b>-</b>	<b>41,836</b>	<b>12,660</b>
<b>A5 Transfers between funds</b>	<b>-</b>	<b>-</b>	<b>-</b>	<b>-</b>	<b>-</b>
<b>A6 Cash funds last year end</b>	<b>18,799</b>	<b>367</b>	<b>-</b>	<b>19,166</b>	<b>31,826</b>
<b>Cash funds this year end</b>	<b>51,040</b>	<b>9,962</b>	<b>-</b>	<b>61,002</b>	<b>19,166</b>

**Section B Statement of assets and liabilities at the end of the period**

Categories	Details	Unrestricted funds to nearest £	Restricted funds to nearest £	Endowment funds to nearest £
<b>B1 Cash funds</b>	<b>Total cash funds</b>	51,040	9,962	-
	(agree balances with receipts and payments account(s))	OK	OK	OK
		Unrestricted funds to nearest £	Restricted funds to nearest £	Endowment funds to nearest £
<b>B2 Other monetary assets</b>		-	-	-
		Fund to which asset belongs	Cost (optional)	Current value (optional)
<b>B3 Investment assets</b>			-	-
		Fund to which asset belongs	Cost (optional)	Current value (optional)
<b>B4 Assets retained for the charity's own use</b>	Staff IT (laptops)	Unrestricted	1,000	500
			-	-
		Fund to which liability relates	Amount due (optional)	When due (optional)
<b>B5 Liabilities</b>			-	

Signed by one or two trustees on behalf of all the trustees	Signature	Print Name	Date of approval
		I J HARDIE	30/11/2024
		M WANLESS	30/11/2024

**Independent examiner's report to the trustees of Wave for Change (the 'Charity'),  
a community interest company**

I report to the trustees on my examination of the accounts of the Charity for the year ended 30 June 2024.

**Responsibilities and basis of report**

As the trustees of the Charity, you are responsible for the preparation of the accounts in accordance with the requirements of the Charities Act 2011 ('the Act').

I report in respect of my examination of the Charity's accounts carried out under section 145 of the Act. In carrying out my examination I have followed all applicable directions given by the Charity Commission under section 145(5)(b) of the 2011 Act.

**Independent examiner's statement**

I have completed my examination. I confirm that no material matters have come to my attention in connection with the examination giving me cause to believe that in any material respect:

1. accounting records were not kept as required by section 130 of the Act; or
2. the accounts do not accord with those records.

I confirm that there are no matters to which your attention should be drawn to enable a proper understanding of the accounts to be reached.



Ian Whitehead

Member of The Institute of Chartered Accountants in England and Wales

1 Vallance Road, London N22 7UD

30 November 2024