



ANNUAL REPORT

1st January 2025 - 31st December 2025

Supporting Local Fundraisers Throughout the Service



This is a unique organisation which will undoubtedly raise the status of the Prison Service in the eyes of the general public

Administration Details

Charity Registration No. - 1189519

Chair	Ken Wingfield MBE	Treasurer	Philip Boardman
Secretary / Vice Chair	John H White MBE	Bankers	Metro Bank
Vice Secretary	Emily Boardman	Accountants	Butterworth Barlow
Recruitment / Communications	Sara Musker and Vicki Sampey		
Committee	Howard Masters Steffi Lakes Colin Davies (<i>Resigned January 2026</i>)		



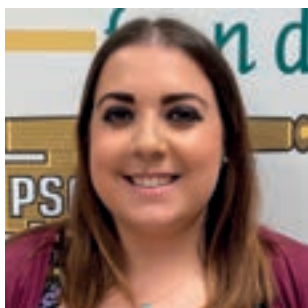
Ken Wingfield MBE



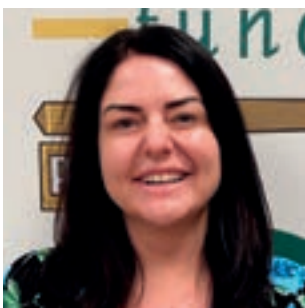
John H White MBE



Philip Boardman



Emily Boardman



Vicki Sampey



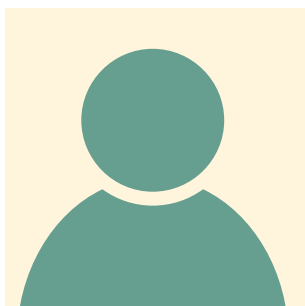
Sara Musker



Howard Masters



Steffi Lakes



Colin Davies
(Resigned January 2026)



Chair's Opening Address and Welcome

Good afternoon everyone. Welcome to the Prison Service Charity Fund's AGM at the Springbridge Riding School for the Disabled.

On behalf of all the Committee thank you for making the Journey today, which is our 16th year we have held it at this glorious venue.

We would like to thank Linda and Dennis and all the team here, who always make us so welcome and we hope your day will be enjoyable, relaxing and informative.

I want to stress the importance of having a representative within an establishment, which is that vital link between the staff and the PSCF, without which we wouldn't be able to function the way we do. So, to you all, thank you for all the hard work you do on our behalf.

That said, we are always looking for new Reps within an establishment, to recruit new members and promote the PSCF. It is only from your monthly donations, that we can support the many appeals we receive each month.

To my committee, I want to thank you all for the voluntary time you spend supporting this wonderful charity, without which we couldn't function.

You will hear far more about the PSCF, in our Committee's report coming shortly.

Thank you again, for your continued support.

Ken Wingfield MBE

Chair
PSCF



Committee's Report

Good afternoon everyone, welcome to the Prison Service Charity Fund's Annual General Meeting, reporting on the events from 1st January 2025 to 31st December 2025.

We hope you find our AGM to be a relaxed, interesting and an informative one. As we progress through the report, if you have any comments you wish to raise, please do interrupt us, as we always appreciate your constructive input.

Amazingly, this is our 16th year here at Springbridge Riding School for the Disabled and our 36th year as a registered Charity (1989-2025).

We would like to take this opportunity to thank our hosts, Dennis and Linda for making our visit most welcome again, in these wonderful surroundings.

We would also like to welcome our new attendees to our AGM. We hope you all have an enjoyable day.

With the ongoing cost of living crisis, your Committee are continually looking at ways to improve the way we operate, whether that be financial or operationally. This will become more apparent later in this report, but an example of this is, during the winter months we hold our monthly meetings via Teams, whereas in the summer we actually meet up, this is in line with our constitution, but saves the PSCF coffers a fair amount of money by not travelling.

Turning to our monthly reports, starting with January, your Committee received 14 appeals, which were all dealt with in our normal manner.

A point we would like to raise again this early in the report, is contributions after retirement.

This question often gets asked. The easiest way is to complete the appropriate form which you receive when finalising your pension, which is done before you retire. Your monthly donation will automatically start being deducted from your pension, when you finally retire.

The other way is by completing a Standing Order, parts 2 and 3 on the joining form, but with bank branches continually closing down, we are asking to complete the form by signing up online, which is easier and much quicker.

We further ask our Representatives to issue a global email to all staff to remind and raise awareness of this and finally we also advertise reminders in the prison Gatelodge.

Moving on to February, only 10 appeals this month, which at this time of the year, is no surprise, but again, nothing out of the ordinary.

Progressing on, we would like to highlight a continuing concern. We are a medically based Charity, so adhering to our Constitution and Criteria, when we get appeals and emails asking for loans, funeral expenses, car repairs, general decorating, food/heating costs for the home, decking and Prison Visitors expenses, which we do on a monthly basis, then the answer will be, sorry No, we cannot assist in these cases. We do however always refer these enquiries to the Charity for Civil Servants, or the POA Welfare fund, who deal with Social and Domestic problems.

So we would ask the forum here today, to remind your colleagues what sort of Charity we are and it might save a bit of embarrassment before they get our answer!

That said, we do support Food Banks, because they also deal with Physical and Mental health concerns and not just giving food to people not so well off as ourselves.

March was still a quiet month with 10 appeals, but one appeal from HMP Berwyn stood out and that was a Shark Dive in aid of a Retinal eye Scanner.

Also in March, your Committee were busy becoming film stars!

We decided to produce a short video of the work the Charity does and involve some of the Charities whom we have assisted. It was in 2008 when we first recorded a DVD, so this was well overdue. A lot of hard work went into making it, by all the Committee, but it has raised our profile within establishments, so we say thank you to all involved, especially Dave McCollom, who did the filming.

Your Secretary also received several invites to attend well-being days at Hull, Holme House, Low Newton, Frankland, Berwyn, Moorland and Humber, as well as the NTRG and Newbold Revel. If possible, we try and attend these events, as they do raise our profile and many new members are signed up to the fund, so thank you for this and keep them coming!

April appeals increased to 17. A couple stand out, a sponsored read, HMP Low Newton and a bike ride from Cardiff to HMP Long Lartin, staff raising vital funds for our Hospices. Well done to both!

We also received a very nice card from a Charity called Veterans Coastal Retreats, who provide respite accommodation for our armed forces and we can't forget them, can we!

May appeals shot up to 25, donating just under 18k to worthy causes. This is nearly double what we receive in. Unusually, we had four appeals associated with dogs!

An Assistance Dog appeal, 2 x Guide dogs for the Blind and save Ruby the Therapy dog. All of which do have a

medical connection, so we were able to further assist them all.

June was again another busy month, with 23 appeals, but more importantly, we gave just under £23k, well over twice what we have coming in, to worthy causes.

Three appeals stand out all from the same establishment, HMP Frankland. Staff there raised £24k in just a few weeks, for the three staff seriously injured by being stabbed and burnt with hot oil, known as the Frankland three! We further supported all three, with a very generous donation. This is the least we could do to help them on their road to recovery.

So we come to July. A record breaking month since we became a registered Charity. We received 34 appeals, donating just under £22k. Half the appeals coming from just three establishments, Durham, Hewell and Hindley.

We had a couple of queries asking for funding projects in Portugal and Cuba. Can we remind the forum, that all our funds must stay in this Country.

We have been fortunate to be invited to visit some of the Charities we have supported and this year was no exception. Centre 56, Rainbows Hospice, Woodlands Hospice to name three and we thank you for showing us how our donations work.

On the subject of Hospices. They are still going through a torrid time. Most of them are not receiving the funding to carry on the basic services, so I would urge you all, if you are able to, support your local Hospice, you never know when you might need them! Thank you.

One of our very long standing supporters and member of the PSCF, Pat Ainsworth, received the fantastic news of being awarded the MBE, in the Kings birthday honours list. On behalf of all the PSCF Committee and it's members... Congratulations Pat, well deserved!

Moving onto August, slightly down on last month with 26 appeals, but awarding substantially less of just over £12k, these were all the usual sort of Charities.

We do get staff informing us they want to leave the PSCF. Unfortunately we are unable to facilitate this. It is the responsibility of the individual to get in touch with Shared Services and the same goes for members donating by Standing Order, you have to get in touch with your Bank or Building Society to cancel it.

This month we received a nice invite from the Woodlands Hospice, to place another leaf on their "tree of life" in memory of someone. Our Representative at Liverpool prison, Mick Flynn had no hesitation in recommending our former Secretary Bob Howard.

Some of our Committee attended the event which took place in December, also in attendance were Bob's Son Steve and Daughter Sharon. It was a very emotional day and we thank Woodland's Hospice for their hospitality.

A somewhat unusual request was also received this month from a Detainee at Coinbrook IRC, asking for financial assistance, because he had no access to public funds!

Of course, the answer was No!

September was consistent with most of the summer months, receiving 21 appeals.

One appeal was for baby Leo, who was born with many congenital problems. We have assisted little Leo in the past, in his fight to recovery and live some sort of normality, but unfortunately it was not to be, he passed away in November. Our thoughts are with him and his family.

It has been a bit of a bizarre year, so it was no surprise when we received 32 appeals in October, just below our all time high, donating just over £17k.

A big part of these appeals were connected to Mental Health Charities. MIND, If U Care Share Foundation and Suicide Prevention Day and of course various Food Banks, to name four.

Your Charity will always support these, as invariably they involve staff.

Again this month, we were invited to the PGA Conference. This is a great opportunity for staff to network with us and sign up a few Governors. Usually, we obtain names for possible new reps., but it does appear to be getting harder each year to get staff interested in Charity work!

The PGA's Charity this year, was "Just for Dogs". Unfortunately, this Charity did not fit our criteria, but after a discussion, your Committee decided to make a donation to the "Guide dogs for the Blind" instead.

So we come to November and for this time of the year we discussed 23 appeals, which included some special Christmas donations.

When giving out these special donations, we stress the funds come from interest on our investments and not from members monthly donations, but we would rather utilise the funds this way, rather than invest it. We hope you agree with us!

That said, your Committee had to make some important changes on how much we donate to certain Charities and this will be discussed further when we come to proposals and the Finance report.

Also this month, we had a question arise about Northern Ireland. Which was:-

Could someone join the PSCF by standing order and if the answer is yes, could they submit an appeal?

After a discussion, we could not see any reason why they couldn't join, provided they abide by our Constitution and criteria and any appeal has a medical connection.

Likewise, we used to have staff from the Isle of Man prison donating by standing order and in the past we

have tried to promote the PSCF in Scotland, but for whatever reason, has not taken off and if it did, we would certainly have to amend our constitution and criteria to suit.

Final point this month is, our bankers Metro, picked up on a potential fraud and notified us of it.

Someone had come across one of our old cheques, amended it and tried to bank it, by use of an Apple phone. First, we must thank our bank for picking it up and preventing a fraud and second, if you are banking cheques this way, please make sure once it's gone through, you destroy the cheque and do not leave it lying around, thank you.

On the instructions from our bank, we amended the letter we send out to anyone receiving one of our cheques.

As we approach the final month of 2025 December, we received 22 appeals. Another month of high appeals, but none of them out of the ordinary.

You may have noticed, every quarter we submit jottings to the Gatelodge. We would like to give a big thank you to Helen at the Gatelodge, for all the help and guidance with the preparation of our jottings. This is probably our biggest form of advertising, in raising our profile to thousands of staff throughout the Country.

Again we printed a PSCF Calendar. As we did last year, we used photos of Charities we have supported over the year. These were sent out to all our Representatives and associates. Again, we have received some very positive feedback about the calendar, so thank you all.

In drawing to an end of the Committee's report, we would like to take this opportunity to thank all our Reps, for your continued support. We really do appreciate all the hard work you do on our behalf in continuing to raise our profile within your establishments.

Thanks also to Potts Print UK, who produce this report free of charge.

Thanks to members of the Committee for continually updating our work on the Social Media sites, namely X and Facebook. Thanks also to Fertile Frog, who update our Website monthly.

It's been an extraordinary year for the PSCF, a year where we have tried to keep abreast of the ongoing cost of living crisis, Whilst giving great consideration to every appeal received and ongoing, we will always try to be a proactive Committee, serving all our members, in the best possible way.

We end this report with our usual seven words....

"Your Charity is in very safe hands". Thank you.

John H White MBE

Secretary
PSCF



Thankyou to Springbridge Carriage Driving for the Disabled

Hi, my name is Sherry, my daughter Amy who is 30 years old has been coming to Springbridge for the last seven years. She has autism, a complex congenital heart condition, epilepsy, chronic depression and anxiety.

Amy has been distressed and isolated most of her life and no one knew how to help her, until we found being with animals made her seem calmer. For these brief moments she would be happy and communicate with the animals.

Then she was introduced to horses and she visibly changed. She began talking to the horses, then the people who looked after them and well now she just talks to everyone all the time. However, if she doesn't have animals around she begins to disappear again into the old Amy and become severely depressed and distressed.

As we cannot afford a horse of our own, that is why Springbridge is so important to Amy and her family. At Springbridge she can help care for the horses and get them ready to go out carriage driving. Amy is encouraged to spend time just bonding and whispering to them too.

Springbridge also have dogs who she loves to play with and teach them new things. We have taken Amy to many other organisations over the years but Springbridge is so very different to all of them.

Linda, Jane, Dennis and their band of lovely volunteers consistently treat every client with the deepest honour, care and respect. Also, Springbridge attends all of the time to the client's safety and ethical requirements, ensuring equal opportunities are provided for everyone. They encourage development, independence and socialisation for clients within a safe and stimulating environment.

I remember when our support worker and I first went to look around Springbridge we cried because we were so moved by the way clients were being treated. In this environment and within these relationships Amy has become so much happier and more confident. She has begun to joke around with people and socialise a lot more. Best of all Amy now wants to talk to her family and spend time with us too.

We are so grateful to Springbridge for the continued care and respect the team show to us and how they encourage Amy to become a more outgoing and independent individual.

Thank you Springbridge

Love Sherry



Treasurer's Report

FINANCIAL OVERVIEW

The 2025 financial year was particularly active, continuing to be supported by the receipt of several substantial bequests in previous years. The Committee had made a strategic decision to deploy these funds directly in support of charitable purposes rather than retaining them solely for investment. Consequently, a broad range of good causes benefited from the generosity of benefactors during the year.

The charity has now achieved its stated financial ambition of operating on sustainable income. Going forward, activities and commitments will be funded primarily through regular member contributions, investment income, and Gift Aid.

INCOME AND EXPENDITURE

Income from appeals and donations declined by **£22.8k**, falling to **£124.6k** for the year. Despite this decrease, the charity increased its charitable support significantly, with **donations paid out rising by £56.9k to £193.2k**.

Overall expenditure remained broadly in line with the previous year. The principal area of variance was advertising and promotional spend, which included:

House of Logos:	£2,412
David McCollom video production:	£2,500
Potts Print:	£576

OPERATING RESULT

The charity recorded an overall **deficit of £68,067** for the year. This figure includes a **non-cash reduction in investment values of £21.5k**, largely attributable to the replacement of the Henderson Trust with Fidelity during the reporting period.

In addition, the accountants wrote off **£6,282** in uncashed cheques relating to the 2024 financial year.

RESERVES

At the year end, the charity held **unrestricted reserves totalling £1,141,358**, providing a strong financial foundation and resilience for future operations.

INVESTMENTS

The charity's investment portfolio remains diversified across a range of UK financial institutions and includes holdings with multiple Building Societies and Banks, with individual balances typically capped at £85,000 to manage risk. An easy-access account held **£29,216** at the year end.

Following the transition of the organisation to Charitable Incorporated Organisation (CIO) status, all investments were successfully transferred into the charity's name. During this process, a missing certificate relating to the Murray Income Trust was identified. After extensive work, ownership was formally transferred to the charity, and efforts are ongoing to recover unpaid dividends for the period 2022–2025. The Trustees formally acknowledge the considerable contribution made by **John White** in resolving this complex matter.

CHARITIES TRUST INCOME

The charity continues to experience inconsistencies in income receipts from the Charities Trust. While all payments due at the end of 2025 have now been received, irregular payment patterns have created administrative and cashflow challenges. Trustees have identified this as a priority area for resolution in the forthcoming year, as delays may affect the charity's ability to respond promptly to appeals.

SPECIAL DONATIONS

During 2025, the charity made a series of special donations to causes previously supported by its members. Cheques were presented at the AGM, followed by additional special donations at Christmas, funded wholly from investment income and bequests rather than member contributions.

GIFT AID

Gift Aid claims submitted during the year generated **£1,074** in additional income for the charity.

CONCLUSION

Despite reporting a deficit, driven largely by strategic charitable spending and non-cash investment movements, the charity remains financially strong. The year reflects deliberate choices to maximise charitable impact, supported by robust reserves and a sustainable income model for the future

Phil Boardman

Treasurer
PSCF



Donations

Name Of Appeal	Establishment	Donation (£)
Andy's Man Club	HMP Liverpool	£175
Zoe's Place	HMP Liverpool	£1000
ALD Club	Ex HMP Frankland	£903
Ronald McDonald House	HMP Hindley	£400
The Christie	HMP Hindley	£500
Wigan and Leigh Hospice	National Safety Team	£1000
Dove House Hospice	HMP Hull	£1495
Macmillan Cancer Support	HMP Moorland	£500
Centre 56	HMP Liverpool	£592
Tiny Lives	HMP Frankland	£1000
St Ann's Hospice	HMP Hindley	£1000
Space 4 Autism	HMP Hindley	£500
Respite appeal for Paulette Staniec	HMP Hindley	£1000
Holly's Hearts	National Safety Team	£500
Veterans Coastal Retreats	HMP Frankland	£1000
British Heart Foundation	HMP Full Sutton	£500
The Candlelighters Trust	HMP Full Sutton	£640
St Cuthbert's Hospice	HMP Frankland	£665
Hearing Dogs for Deaf People	Ex HMP Preston	£320
Chorley Homeless Centre	Ex HMP Preston	£162
Battens Disease Family Association	HMP Channings Wood	£500
Respite Appeal for Joleene Hinnigan	HMP Frankland	£750
Dove House Hospice	HMP Hull	£1300
Prostate Cancer UK	HMP Stafford	£500
Crohn's and Colitis UK	Ex HMP Preston	£500
Lincs. and Notts Air Ambulance	HMP Lincoln	£540
Prostate Cancer UK	HMP Stafford	£400
St Cuthbert's Hospice	HMP Frankland	£587
St Cuthbert's Hospice	HMP Holme House	£100
Children with Cancer UK	HMP Kirkham	£380
Respite Appeal for Liam Kost	Ex HMP Liverpool	£998
The Countess Charity	HMP Berwyn	£465
Making Memories Appeal for Jane Fahey	HMP Hindley	£590
Sefton Community Pantry	HMP Hindley	£300
Total carried forward		£21,762

Brought Forward

£21,762

Name Of Appeal	Establishment	Donation (£)
Woodlands Hospice	HMP Liverpool	£325
Centre 56	HMP Liverpool	£675
Brandon Community FC-Youth	HMP Durham	£500
Cancer Research UK	Ex HMP New Hall	£250
Emeralds Little Gems Daycare- Crook	HMP Low Newton	£165
Dove House Hospice	HMP Hull	£560
Andy's Man Club	HMP Frankland	£500
Middleton Foodbank	HMP Hindley	£1000
Walsall Healthcare NHS Charitable fund- Palliative Care	HMP Birmingham	£1399
Dudley Stroke Association	HMP Birmingham	£1200
Ty- Hafan	HMP Cardiff	£1500
4Louis	HMP Durham	£500
Weston Park Cancer Charity	HMP Moorland	£250
Hornsea Inshore Rescue	HMP Humber	£1000
Sefton Community Pantry	HMP Hindley	£200
The Christie	HMP Hindley	£500
British Heart Foundation	HMP Moorland	£500
Loros Hospice	Ex HMP Glen Parva	£1500
Daft as a Brush	Ex HMP Frankland	£1500
Sefton Community Pantry	Ex HMP Liverpool	£1500
Sefton Community Pantry	Ex HMP Liverpool	£1500
Derian House Children's Hospice	National Safety Team	£1500
Ronald McDonald House	HMP Hindley	£1500
Shooting Stars Cancer Support	HMP Berwyn	£1500
The Hummingbird Centre	Lilleshall	£1500
St Cuthbert's Hospice	Ex HMP Frankland	£1500
Lincs and Notts Air Ambulance	Ex HMP Whatton	£1500
The Jake appeal fund	HMP Frankland	£1500
Age Concern-Liverpool	HMPPS Contract Services	£1500
Westhoughton Assist	HMP Hindley	£1500
Still Births and Neonatal Death Charity	HMP Whatton	£1500
Woodlands Hospice	HMP Liverpool	£1500
Centre 56	Ex HMP Liverpool	£1500
Rainbow's House Children's Hospice	HMP Leicester	£1500
Total carried forward		£58,286

Brought Forward**£58,286**

Name Of Appeal	Establishment	Donation (£)
Dudley Stroke Association	HMP Birmingham	£1500
Yorkshire Cancer Research	HMP Humber	£1500
Chadsgrove School for Special Needs Children	HMP Hewell	£1500
Springbridge RDA	Ex HMP Leicester	£1500
Sefton Community Pantry	Ex HMP Liverpool	£1500
ALD Club	Ex HMP Liverpool	£1500
The Christie	Ex HMP Liverpool	£1500
Respite Appeal for John Gledhill	NTRG	£2000
HLH Research	HMP Manchester	£1000
SANDS Charity	HMP Kirkham	£110
Lindsey Lodge Hospice	HMP Moorland	£718
Rainbows Trust Children's Charity	Ex HMP Low Newton	£500
Dudley Stroke Association	HMP Birmingham	£810
Cancer Research UK	HMP Frankland	£250
Metabolic Research UK	HMP North Sea Camp	£500
Assistance Dog Appeal	HMP Cookham Wood	£2000
St Columbia's Primary School	Ex HMP Liverpool	£1634
Diabetes UK	HMP Preston	£368
North West Ambulance Charity	National Safety Team	£1073
If U Care Share Foundation	HMP Frankland	£168
St Cuthbert's Hospice	HMP Frankland	£168
Guide Dogs for the Blind Association	HMP Liverpool	£500
Guide Dogs for the Blind Association	HMP Liverpool	£286
East Durham Veterans Trust	HMP Frankland	£800
Prostate Cancer UK	HMP Hewell	£285
Save Ruby the Therapy Dog	HMP Holme House	£650
Ronald McDonald House	HMP Hindley	£400
Wigan and Leigh Hospice	HMP Hindley	£100
Centre 56	HMP Liverpool	£1427
Crohn's and Colitis UK	Ex HMP Preston	£400
Sefton Community Pantry	HMP Liverpool	£1100
Tia's Crown	North West Probation	£455
Guide Dogs for the Blind Association	HMP Liverpool	£500
Leah's Friends of CF Trust	HMP Liverpool	£950
Total carried forward		<u>£87,938</u>

Brought Forward

£87,938

Name Of Appeal	Establishment	Donation (£)
St Vincent De Paul Society	National Safety Team	£1000
Children with Cancer UK	HMP Kirkham	£500
Whizz Kidz	HMP Hull	£500
Brain Tumour Research	DG Operations Team	£500
Cancer Research UK	DG Operations Team	£500
Northumbria Blood Bikes	Ex HMP Frankland	£2000
British Heart Foundation	HMP Moorland	£445
Alder Hey Children's Charity	Ex HMP Liverpool	£1990
Dove Cottage Day Hospice Ltd	HMP Whatton	£460
Respite Appeal for Paul Crampton	HMP Frankland	£2000
Respite Appeal for Gary Speight	HMP Frankland	£2000
Respite Appeal for Catherine Herbert	HMP Frankland	£2000
Andy's Man club	HMP Frankland	£500
Birmingham Hospice	HMP Birmingham	£1755
MS Society	HMP Birmingham	£480
Centre 56	HMP Liverpool	£2000
Tia's Crown	North West Probation	£500
Different Strokes	National Safety Team	£500
Cardiomyopathy UK	National Safety Team	£500
Nerve Tumours UK	HMP Leicester	£500
MIND	HMP Low Newton	£500
North West Air Ambulance	POA NEC	£2000
Cheesy Waffles Project	HMP Low Newton	£2000
Wigan and Leigh Hospice	HMP Hindley	£954
Birmingham Children's Hospital	HMP Hewell	£315
Cancer Research UK	HMP Hewell	£255
Blood Cancer UK	HMP Hewell	£500
Oddballs Foundation	HMP Hewell	£250
Martha Dancing Heart	HMP Hewell	£217
Dementia UK	Ex HMP Frankland	£285
Anthony Nolan Trust	N E Area Office	£500
Alopecia UK	HMP Hull	£413
The Alz Dementia Cafe	HMP Birmingham	£1000
Total carried forward		£117,757

Brought Forward**£117,757**

Name Of Appeal	Establishment	Donation (£)
Yorkshire Cancer Research	HMP Humber	£500
Man Health. Org.UK	Ex HMP Frankland	£500
Mental Health Organisation	HMP Humber	£500
Harley Jackson diagnosed with SMA Type 1	HMP Buckley Hall	£2000
Cancer Research UK	HMP Liverpool	£500
Saddleworth Rangers	HMP Hindley	£300
Wigan Youth Zone	HMP Hindley	£500
Cancer Research UK	HMP Hindley	£300
Cancer Research UK	HMP Berwyn	£500
Prospect Hospice	HMP Hewell	£291
Youth Cancer Trust	HMP Moorland	£210
Andy's Man Club	HMP Durham	£94
Heel and Toe Children's Charity	HMP Low Newton	£1000
Ty Hafan Children's Hospice	HMP Cardiff	£1000
The Christie	HMP Hindley	£475
Cancer Research UK	HMP Hindley	£200
Huntingtons Disease Association	HMP Durham	£500
Overcoming MS	HMP Hull	£500
The Albie Sugden Foundation	HMP Hull	£1000
If U Care Share Foundation	Ex HMP Durham	£1000
Smile for Life	Ex HMP Durham	£500
Space North East	Ex HMP Durham	£500
The last Post memorial bar and Don war memorial museum and Hub	HMP Holme House	£261
Heel and Toe Children's Charity	Ex HMP Frankland	£500
If U Care Share Foundation	HMP Durham	£1000
Diabetes UK	HMP Moorland	£347
Macmillan Cancer Support	HMYOI Feltham	£500
Noah's Ark Children's Hospice for Wales	HMP Long Lartin	£500
Young Lives Vs Cancer	HMP Long Lartin	£500
Fibromyalgia UK	HMP Hewell	£160
Wasdale Mountain Rescue	HMP Lancaster Farms	£325
Great North Air Ambulance	HMP Lancaster Farms	£325
Young Lives Vs Cancer	HQ	£500
Total carried forward		£135,545

Brought Forward

£135,545

Name Of Appeal	Establishment	Donation (£)
Cystic Fibrosis UK	HQ	£500
Young Lives Vs Cancer	Newbold Revel	£30
British Heart Foundation	HMP Leeds	£500
Trinity Hospice	HMP Kirkham	£400
Mary Stevens Hospice	HMP Birmingham	£1000
Alzheimer's Society	HMP Frankland	£300
Prostate Cancer UK	HMP Holme House	£500
Tia's Crown	North West Probation	£500
Cancer Research UK	National Safety Team	£500
Stroke Association	D G Operations Team	£317
Macmillan Cancer Support	D G Operations Team	£392
Ackworth Riding School for the Disabled	HMP Buckley Hall	£500
Alzheimer's Research UK	Ex HMP Whatton	£500
Willowbrook Hospice	HMP Hindley	£475
Clatterbridge Cancer Charity	South Liverpool Probation	£981
Prostate Cancer UK	HMP Holme House	£150
Cancer Research UK	HMP Askham Grange	£150
Daft As A Brush	Ex HMP Frankland	£182
Wigan and Leigh Hospice	National Safety Team	£1000
4Louis	HMP Durham	£250
British Heart Foundation	HMP Hewell	£215
Angel Trust	N E Area Office	£1150
Love Amelia	HMP Low Newton	£1000
Yorkshire Cancer Research	HMP Moorland	£831
Elsie's Story Charity	HMP Liverpool	£1328
ALD Club	Ex HMP Liverpool	£1440
Great North Air Ambulance	Ex HMP Frankland	£27
Centre 56	HMP Liverpool	£343
Ronald McDonald House	HMP Hindley	£500
The Christie	HMP Hindley	£850
Macmillan Cancer Support	HMP Askham Grange	£250
Prader-Willi Syndrome Foundation	Ex HMP Whatton	£500
Zoe's Place Trust	HMP Frankland	£500
Leo Whitfield Appeal	Ex HMP Frankland	£250
Total carried forward		£153,856

Brought Forward**£153,856**

Name Of Appeal	Establishment	Donation (£)
Sefton Community Pantry	HMP Hindley	£776
Middleton Foodbank	HMP Hindley	£500
ALD Club	Ex HMP Liverpool	£159
Parkinson's UK	HMP Liverpool	£450
Cancer Research UK	HMP Frankland	£500
Bowel Cancer UK	HMP Frankland	£102
Sefton Community Pantry	HMP Liverpool	£175
The Darby Rimmer MND Foundation	HMP Hewell	£222
Great North Air Ambulance	HMP Frankland	£163
St Cuthbert's Hospice	HMP Frankland	£1000
Rainbows Trust Children's Charity	HMP Frankland	£156
Sefton Community Pantry	HMP Frankland	£1150
The Christie	HMP Hindley	£800
Alder Hey Children's Charity	Ex HMP Liverpool	£2000
St John's Hospice	HMP Wymott	£500
4Louis	HMP Durham	£500
St Cuthbert's Hospice	HMP Holme House	£351
CLAPA	HMP Frankland	£55
St Benedict's Hospice	HMP Frankland	£2000
Tommy's	HMP Frankland	£500
Care after Combat	HMP Whatton	£400
Wigan and Leigh Hospice	HMP Hindley	£600
British Heart Foundation	HMP Durham	£349
Chadsgrove Specialist College	HMP Hewell	£420
St Cuthbert's Hospice	Ex HMP Frankland	£725
Help for Heroes	HMP Moorland	£62
North West Air Ambulance	Ex HMP Preston	£345
Wigan Boys and Girls Club	HMP Hindley	£235
Respite appeal for Megan Colwell	HMP Hindley	£410
Brain Tumour Research	HMP Moorland	£475
Children with Cancer UK	HMP Kirkham	£500
The Brain Tumour Charity	HMP Frankland	£500
PKD Charity	HMP Holme House	£500
Respite appeal for Siobhan Kelly and Family	HMP Buckley Hall	£700
Total carried forward		£172,136

Brought Forward

£172,136

Name Of Appeal	Establishment	Donation (£)
Guide Dogs for the Blind	Ex HMP Frankland	£500
Shooting Stars Cancer Support	HMP Berwyn	£500
GUTS UK	Llilleshall	£500
Great North Air Ambulance	HMP Holme House	£500
The Christie	HMP Hindley	£500
Sefton Community Pantry	South Liverpool Probation	£500
Daft as a Brush	Ex HMP Frankland	£500
Sefton Community Pantry	Ex HMP Liverpool	£500
Rainbows Hospice for Children and young adults	Ex Glen Parva	£500
Southern Hospice Group	HMP Hewell	£575
The Walton Centre Charity	HMP Thorn Cross	£350
Durham Masonic Cycling Club	HMP Durham	£250
Respite appeal for Samantha Cole	HMP Portland	£1500
Macmillan Cancer Support	HMP Moorland	£250
St Leonard's Hospice	HMP Humber	£1205
Alzheimer's Research UK	HMP Hindley	£250
Red Sky Foundation	HMP Frankland	£320
Alzheimer's Society	Ex HMP Preston	£205
Sefton Community Pantry	South Liverpool Probation	£700
Wigan Boys and Girls Club	HMP Hindley	£440
Ronald McDonald House	HMP Hindley	£250
Cheesy Waffles Project	HMP Low Newton	£1000
Macmillan Cancer Support	HMP Buckley Hall	£250
Birmingham Children's Hospital	HMP Hewell	£250
Mary Steven's Hospice	HMP Birmingham	£500
Worcestershire Acute Hospitals Charity	HMP Hewell	£513
PSC Support	HMP Manchester	£595
Phoebes Challenge	HMP Styal	£1000
Westhoughton Community Assist	HMP Hindley	£338
Ronald McDonald House	HMP Hindley	£250
Young Lives Vs Cancer	HMP Full Sutton	£250
Sean's Place	HMP Liverpool	£1000
Samaritans	HMP Liverpool	£250
Dementia UK	National Safety Team	£250
Total carried forward		£189,377

Brought Forward**£189,377**

Name Of Appeal	Establishment	Donation (£)
The Halle Obrien CIC	HMP Liverpool	£880
Cancer Research UK	HMP Buckley Hall	£250
Respite and Home Aids for Olivia Turner	HMP Buckley Hall	£1000
Wigan and Leigh Hospice	National Safety Team	£1000
Francis House Children's Hospice	HMP Hindley	£500
Springhill Hospice	HMP Hindley	£450
Macmillan Cancer Support	HMP Durham	£137
The Emma Cosgrove Foundation	HMP Hindley	£500
Weldmar Hospicecare	National Safety Team	£960
Refuge	POA NEC	£250
Alzheimer's Society	HMP Holme House	£225
Zoe's Place	HMP Liverpool	£200

Total Donations 2025**£195,729**

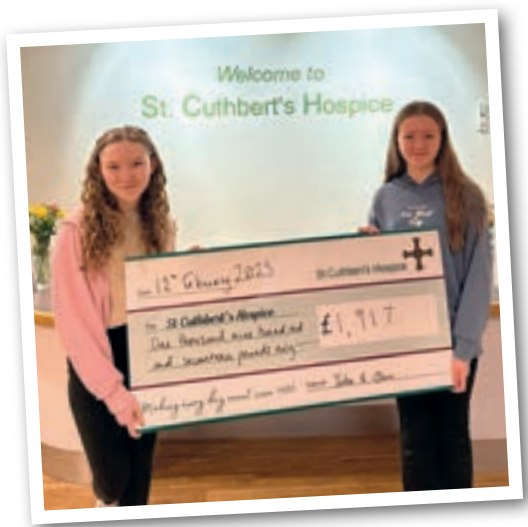




Participants in the ALD Club summer walk



John Oxley presenting a cheque to The Christie Charity



Olivia and Isla presenting a cheque to St Cuthbert's Hospice



Emma Sargeant, a member of staff from HMP Hull, at the top of Ben Nevis in June, raising money for Alopecia UK



The High Sheriff of Merseyside Billy Hui BEM, with Vicki and Phil from the PSCF after the cheque presentation to the Centre 56



Ian and James from Potts Print (UK) presenting a cheque to Daft as a Brush Cancer Patient Care



Emma presenting a cheque to Clatterbridge Cancer Trust



Maria, Clare and PSCF Secretary John White presenting cheque to the East Durham Veterans Trust



Staff from HMP Hull, presenting a cheque to Dove House Hospice



Emma and Dave presenting a cheque to the Yorkshire Cancer Research



Pupils from Waterton Academy raising funds for the Riding School for the Disabled, Ackworth, with the staff at HMP Buckley Hall



Ken (The PSCF's Chair) presenting a cheque to Rainbows Hospice for Children and Young people

**Report of the Trustees and
Unaudited Financial Statements for the Year Ended 31 December 2025
for
PRISON SERVICE CHARITY FUND**

**Butterworth Barlow
Chartered Accountants
Butterworth Barlow House
10 Derby Street
Prescot
Liverpool
Merseyside
L34 3LG**

PRISON SERVICE CHARITY FUND

Report of the Trustees for the Year Ended 31 December 2025

The trustees present their report with the financial statements of the charity for the year ended 31 December 2025. The trustees have adopted the provisions of Accounting and Reporting by Charities: Statement of Recommended Practice applicable to charities preparing their accounts in accordance with the Financial Reporting Standard applicable in the UK and Republic of Ireland (FRS 102) (effective 1 January 2019).

ACHIEVEMENTS AND PERFORMANCE

The statement of financial activities for the year is set out on page 4 of the financial statements. A summary of the financial results and the work of the charity is set out below.

During the period the charity received donations of £124,649. Donations were made amounting to £193,264 and the trustees are once again pleased to have supported a wide range of charities.

The overall result for the year was a deficit of £68,067.

The charity has total funds of £1,141,358 at 31 December 2025 (2024: £1,209,425).

STRUCTURE, GOVERNANCE AND MANAGEMENT

Governing document

The charity is controlled by its governing document, a deed of trust and constitutes an unincorporated charity.

REFERENCE AND ADMINISTRATIVE DETAILS

Registered Charity number

1189519

Principal address

**74 Claremont Drive
Ravenstone
Coalville
Leicestershire
LE67 2ND**

Trustees

**Mr J White MBE
Mr K Wingfield MBE
Mr P Boardman
Ms V Sampey
Ms S Musker
Ms E Boardman
Ms S Lakes (appointed 1.1.25)
Mr H Masters (appointed 1.1.25)
Mr C Davies (Resigned 1.1.26)**

REFERENCE AND ADMINISTRATIVE DETAILS

Independent Examiner

**Butterworth Barlow
Chartered Accountants
Butterworth Barlow House
10 Derby Street
Prescot
Liverpool
Merseyside
L34 3LG**

Approved by order of the board of trustees on 9 April 2026 and signed on its behalf by:

Phil Boardman

Mr P Boardman - Trustee

**Independent Examiner's Report to the Trustees of
Prison Service Charity Fund**

Independent examiner's report to the trustees of Prison Service Charity Fund

I report to the charity trustees on my examination of the accounts of Prison Service Charity Fund (the Trust) for the year ended 31 December 2025.

Responsibilities and basis of report

As the charity trustees of the Trust you are responsible for the preparation of the accounts in accordance with the requirements of the Charities Act 2011 ('the Act').

I report in respect of my examination of the Trust's accounts carried out under Section 145 of the Act and in carrying out my examination I have followed all applicable Directions given by the Charity Commission under Section 145(5)(b) of the Act.

Independent examiner's statement

I have completed my examination. I confirm that no material matters have come to my attention in connection with the examination giving me cause to believe that in any material respect:

- 1. accounting records were not kept in respect of the Trust as required by Section 130 of the Act; or**
- 2. the accounts do not accord with those records; or**
- 3. the accounts do not comply with the applicable requirements concerning the form and content of accounts set out in the Charities (Accounts and Reports) Regulations 2008 other than any requirement that the accounts give a true and fair view which is not a matter considered as part of an independent examination.**

I have no concerns and have come across no other matters in connection with the examination to which attention should be drawn in this report in order to enable a proper understanding of the accounts to be reached.

Butterworth Barlow

**Butterworth Barlow
Prescot
Liverpool
Merseyside
L34 3LG**

9 April 2026

PRISON SERVICE CHARITY FUND

Statement of Financial Activities
for the Year Ended 31 December 2025

		31.12.25 Unrestricted fund £	31.12.24 Total funds £
INCOME AND ENDOWMENTS FROM	Notes		
Donations and legacies		124,650	147,492
Investment income	2	44,995	23,839
Total		169,645	171,331
EXPENDITURE ON			
Charitable activities			
General		216,165	152,525
Net gains/(losses) on investments		(21,547)	50,756
NET INCOME/(EXPENDITURE)		(68,067)	69,562
RECONCILIATION OF FUNDS			
Total funds brought forward		1,209,425	1,139,863
TOTAL FUNDS CARRIED FORWARD		1,141,358	1,209,425

The notes form part of these financial statements

PRISON SERVICE CHARITY FUND

Balance Sheet 31 December 2025

		31.12.25 Unrestricted fund £	31.12.24 Total funds £
FIXED ASSETS	Notes		
Tangible assets	5	1,680	2,240
Investments	6	1,109,334	1,139,366
		<u>1,111,014</u>	<u>1,141,606</u>
CURRENT ASSETS			
Cash at bank		33,164	70,578
CREDITORS			
Amounts falling due within one year	7	(2,820)	(2,759)
NET CURRENT ASSETS		<u>30,344</u>	<u>67,819</u>
TOTAL ASSETS LESS CURRENT LIABILITIES		<u>1,141,358</u>	<u>1,209,425</u>
NET ASSETS		<u>1,141,358</u>	<u>1,209,425</u>
FUNDS	8		
Unrestricted funds		1,141,358	1,209,425
TOTAL FUNDS		<u>1,141,358</u>	<u>1,209,425</u>

The financial statements were approved by the Board of Trustees and authorised for issue on 9 April 2026 and were signed on its behalf by:

Phil Boardman

Mr P Boardman - Trustee

The notes form part of these financial statements

PRISON SERVICE CHARITY FUND

Notes to the Financial Statements for the Year Ended 31 December 2025

1. ACCOUNTING POLICIES

Basis of preparing the financial statements

The financial statements of the charity, which is a public benefit entity under FRS 102, have been prepared in accordance with the Charities SORP (FRS 102) 'Accounting and Reporting by Charities: Statement of Recommended Practice applicable to charities preparing their accounts in accordance with the Financial Reporting Standard applicable in the UK and Republic of Ireland (FRS 102) (effective 1 January 2019)', Financial Reporting Standard 102 'The Financial Reporting Standard applicable in the UK and Republic of Ireland' and the Charities Act 2011. The financial statements have been prepared under the historical cost convention, with the exception of investments which are included at market value, as modified by the revaluation of certain assets.

Income

All income is recognised in the Statement of Financial Activities once the charity has entitlement to the funds, it is probable that the income will be received and the amount can be measured reliably.

Expenditure

Liabilities are recognised as expenditure as soon as there is a legal or constructive obligation committing the charity to that expenditure, it is probable that a transfer of economic benefits will be required in settlement and the amount of the obligation can be measured reliably. Expenditure is accounted for on an accruals basis and has been classified under headings that aggregate all cost related to the category. Where costs cannot be directly attributed to particular headings they have been allocated to activities on a basis consistent with the use of resources.

Grants offered subject to conditions which have not been met at the year end date are noted as a commitment but not accrued as expenditure.

Tangible fixed assets

Depreciation is provided at the following annual rates in order to write off each asset over its estimated useful life.

Office equipment - 25% on reducing balance

Taxation

The charity is exempt from tax on its charitable activities.

Fund accounting

Unrestricted funds can be used in accordance with the charitable objectives at the discretion of the trustees.

Restricted funds can only be used for particular restricted purposes within the objects of the charity. Restrictions arise when specified by the donor or when funds are raised for particular restricted purposes.

Further explanation of the nature and purpose of each fund is included in the notes to the financial statements.

continued...

PRISON SERVICE CHARITY FUND

Notes to the Financial Statements - continued for the Year Ended 31 December 2025

2. INVESTMENT INCOME

	31.12.25	31.12.24
	£	£
Income from listed investments	5,421	5,817
Interest on cash deposits	39,574	18,022
	<u>44,995</u>	<u>23,839</u>

3. TRUSTEES' REMUNERATION AND BENEFITS

There were no trustees' remuneration or other benefits for the year ended 31 December 2025 nor for the year ended 31 December 2024.

Trustees' expenses

Trustees reimbursed expenses amounted to £8,206 in the year (2024: £7,166)

4. COMPARATIVES FOR THE STATEMENT OF FINANCIAL ACTIVITIES

	Unrestricted fund £
INCOME AND ENDOWMENTS FROM	
Donations and legacies	147,492
Investment income	23,839
Total	<u>171,331</u>
EXPENDITURE ON	
Charitable activities	
General	152,525
Net gains on investments	<u>50,756</u>
NET INCOME	69,562
RECONCILIATION OF FUNDS	
Total funds brought forward	1,139,863
TOTAL FUNDS CARRIED FORWARD	<u><u>1,209,425</u></u>

continued...

PRISON SERVICE CHARITY FUND

**Notes to the Financial Statements - continued
for the Year Ended 31 December 2025**

5. TANGIBLE FIXED ASSETS

	Office equipment £
COST	
At 1 January 2025 and 31 December 2025	6,874
DEPRECIATION	
At 1 January 2025	4,634
Charge for year	560
At 31 December 2025	5,194
NET BOOK VALUE	
At 31 December 2025	1,680
At 31 December 2024	2,240

6. FIXED ASSET INVESTMENTS

	31.12.25 £	31.12.24 £
Shares	263,378	284,925
Cash deposits	845,956	854,441
	1,109,334	1,139,366

Additional information as follows:

	Listed investments £
MARKET VALUE	
At 1 January 2025	284,925
Impairments	(21,547)
At 31 December 2025	263,378
NET BOOK VALUE	
At 31 December 2025	263,378
At 31 December 2024	284,925

There were no investment assets outside the UK.

continued...

PRISON SERVICE CHARITY FUND

**Notes to the Financial Statements - continued
for the Year Ended 31 December 2025**

6. FIXED ASSET INVESTMENTS - continued

Cost or valuation at 31 December 2025 is represented by:

	Listed investments £
Valuation in 2024	284,925
Valuation in 2025	(21,547)
	<u>263,378</u>

Investments (neither listed nor unlisted) were as follows:

	31.12.25 £	31.12.24 £
Cash deposits	<u>845,956</u>	<u>854,441</u>

7. CREDITORS: AMOUNTS FALLING DUE WITHIN ONE YEAR

	31.12.25 £	31.12.24 £
Other creditors	<u>2,820</u>	<u>2,759</u>

8. MOVEMENT IN FUNDS

	At 1.1.25 £	Net movement in funds £	At 31.12.25 £
Unrestricted funds			
General fund	1,209,425	(68,067)	1,141,358
TOTAL FUNDS	<u>1,209,425</u>	<u>(68,067)</u>	<u>1,141,358</u>

Net movement in funds, included in the above are as follows:

	Incoming resources £	Resources expended £	Gains and losses £	Movement in funds £
Unrestricted funds				
General fund	169,645	(216,165)	(21,547)	(68,067)
TOTAL FUNDS	<u>169,645</u>	<u>(216,165)</u>	<u>(21,547)</u>	<u>(68,067)</u>

continued...

PRISON SERVICE CHARITY FUND

**Notes to the Financial Statements - continued
for the Year Ended 31 December 2025**

8. MOVEMENT IN FUNDS - continued

Comparatives for movement in funds

	At 1.1.24 £	Net movement in funds £	At 31.12.24 £
Unrestricted funds			
General fund	1,139,863	69,562	1,209,425
TOTAL FUNDS	1,139,863	69,562	1,209,425

Comparative net movement in funds, included in the above are as follows:

	Incoming resources £	Resources expended £	Gains and losses £	Movement in funds £
Unrestricted funds				
General fund	171,331	(152,525)	50,756	69,562
TOTAL FUNDS	171,331	(152,525)	50,756	69,562

A current year 12 months and prior year 12 months combined position is as follows:

	At 1.1.24 £	Net movement in funds £	At 31.12.25 £
Unrestricted funds			
General fund	1,139,863	1,495	1,141,358
TOTAL FUNDS	1,139,863	1,495	1,141,358

continued...

PRISON SERVICE CHARITY FUND

Notes to the Financial Statements - continued for the Year Ended 31 December 2025

8. MOVEMENT IN FUNDS - continued

A current year 12 months and prior year 12 months combined net movement in funds, included in the above are as follows:

	Incoming resources £	Resources expended £	Gains and losses £	Movement in funds £
Unrestricted funds				
General fund	340,976	(368,690)	29,209	1,495
TOTAL FUNDS	340,976	(368,690)	29,209	1,495

9. RELATED PARTY DISCLOSURES

There were no related party transactions for the year ended 31 December 2025.

Thank you



PSCF Goodwill Messages

Once again we are bowled over after receiving a cheque for £1625.00 from the Prison Service Charity Fund. This sizeable donation will make a massive difference to the work the charity does and can continue to do.

With many thanks.

Kind regards,
Fiona Hopson

Fundraising & Events Officer
If U Care Share Foundation

Good morning,

May we thank you for your generous donations of £1000 to St Anne's Hospice and £500 to Space4Autism respectively.

Both these charities are absolutely delighted to hear this news, your donations help to change lives.

Once again, Thank you from the bottom of all our hearts it was a wonderful surprise and a great start to 2025.

Very best regards

Tim & Sonia Lyons

Thank you so much for your generous donation of £1000 from the Prison Service Charity Fund towards the Christmas lights appeal at Warwick Road in Stockport. We will let Christian's family know of the donation.

Their contribution will help to support someone with a life-limiting illness, giving comfort to them, their families and friends at a very difficult time. Thank you so much.

Their support is really appreciated by everyone here at St Ann's Hospice. For over 50 years now, community has been at the heart of the hospice, and we are stronger because of the support of people like you.

PSCF Goodwill Messages (continued)

Louise Pinney, St Ann's Hospice Ward Manager, "I see first-hand the huge impact St Ann's Hospice care has on our patients and their loved ones. Without the support from the local community, we simply could not continue with this work. We are all so grateful for all the amazing people, including supporters like you, for all you do for our hospice. Thank you so much".

Their donation means that today, tomorrow and for years to come, our patients will receive the specialist care and support they deserve at a difficult period in their lives. Every donation makes a difference, so thank you once again for your generosity.

Many thanks again,

Julie

Fundraising Support

Just to confirm I have received a cheque for £540 from the PSCF addressed to Michelle McGhie for the air ambulance this morning and have handed this over to her.

Jackie Ristic

Prison employment lead







Prison Service Charity Fund, 68 Hornby Road, Liverpool L9 3DF
www.prisonservicecharityfund.co.uk

Registered CIO Charity No. 1189519