

Annual Report & Accounts

Resolve Now



for year ended
March 2023

Resolve  **Now**
Here for each other Zeh Lozeh

Chair's Statement

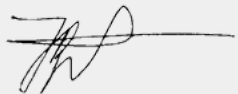
Do you know what it's like to live with mental health struggles?

Most people don't. Those suffering are afraid of stigma and such things are often kept very hush-hush.

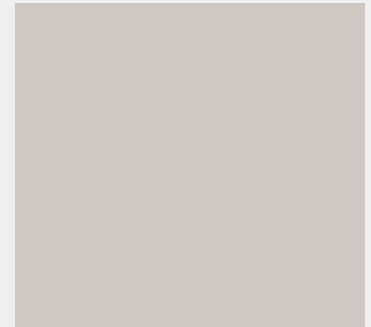
But keeping things quiet also means that patients do not receive the kind of support and encouragement that, for instance, people with cancer might receive.

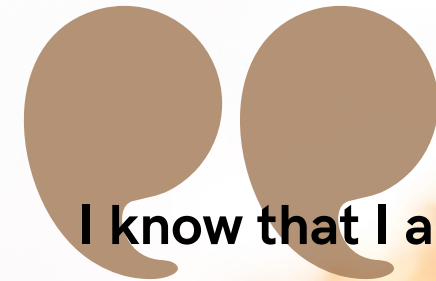
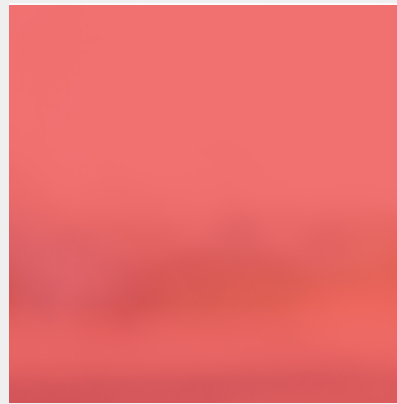
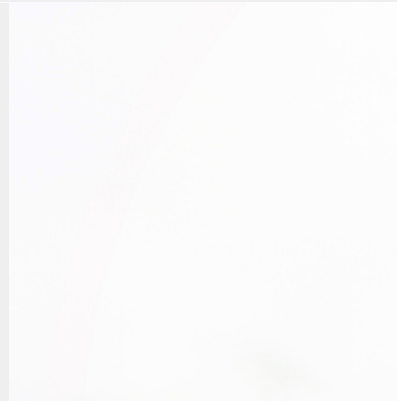
It is this gap that Resolve Now aims to fill. Providing access to therapy, supporting families with care packages and resources, and delivering community awareness on the subject are only some of the ways that we have succeeded in easing the burden and negative stigma around mental health issues. In the reporting year, we've enlightened **2312** school pupils with our workshops, upskilled **942** teachers, and informed **861** parents about mental health - the signs, the tips, the strategies, the support.

The trustees are grateful to present their annual report and the unaudited financial statements of Resolve Now, and invite you to follow along with its impactful work and achievements. We thank our staff and supporters for their constant encouragement, allowing us to be part of the humbling yet inspiring experience of improving the mental health of our community.



Mr J Baumgarten
on behalf of the Trustees





**I know that I am
different. My brain
works differently
than others.**

**My therapist asked if I would
be okay with my class having
a workshop on neurodiversity
so that they would
understand me better.
It was very helpful and my
friends are so much kinder
now.**

David, age 11



Our Charitable Objectives

The Objects of Resolve Now, as set out in its governing document, are:

- The preservation and protection of the emotional health, wellbeing and mental health of young people aged 5 - 25 years living in North London and their families by providing therapy programmes, mentoring programmes, anti-bullying programmes and counselling that promote engagement with learning and social inclusion in schools and communities, for the public benefit.
- The advancement of education of the general public in areas relating to the preservation of mental health, wellbeing and recovery by the provision of information, advice, awareness workshops and support groups.

Our Strategic Aims

To raise awareness and break down stigmas with regard to mental illness; to transform the landscape of mental health in the community.

To enable students to better manage and navigate life challenges and emerge as contributing adults in society.

To skill-up the caregivers around children and adolescents to enhance emotional well-being, spot challenges early and know how to help effectively.

To provide practical, emotional and therapeutic support for children and young adults in the community who often face significant barriers to accessing support due to cultural needs.



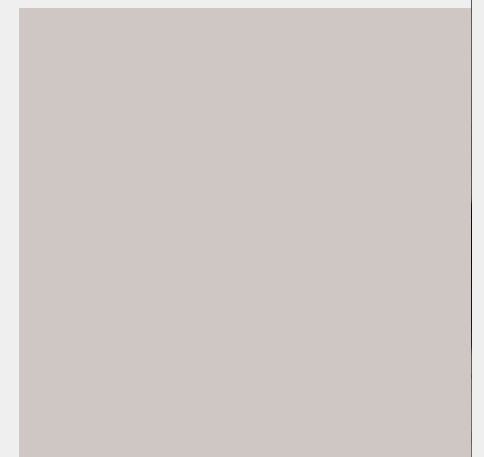
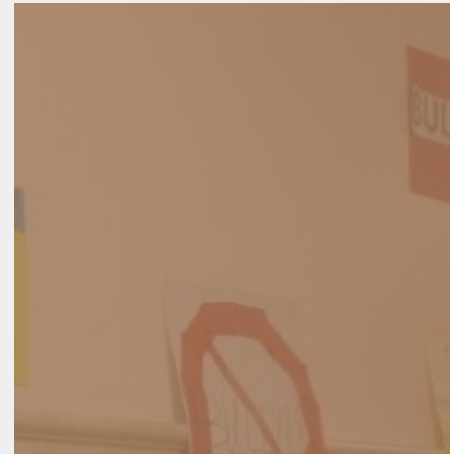
Structure, Governance & Management

The charity is a CIO governed by its constitution.

The charity is run by the Board of Trustees who are required to apply the charity's resources to achieve its charitable objects and to provide strategic leadership of the charity's work.

There are currently three trustees, but the charity plans to increase that number. The trustees have wide-ranging skills and experience in areas relevant to the charity's activities. All trustees were provided with a full induction into the charity's work prior to their appointment, and they meet regularly to govern and lead the charity's endeavours.

Achievement & Performance



Workshops for Children



Our mental health education is raising awareness and breaking down stigmas, transforming the landscape of mental health in the community.

Workshops are practically supporting and guiding pupils to better manage and navigate challenges and emerge as contributing adults in society.

Workshop topics cover:

- Anti-bullying
- Personal safety
- Boundaries
- Understanding emotions, understanding myself
- Confidence and resilience
- Social Sense – making sense of it all!
- Stress and Anxiety – how to manage during exam season and beyond
- Moving on – preparation for life after formal school education

**Delivered in
15 schools**

Training for Teachers

We offered Insets and trainings for various schools and educational settings. Our agenda is to skill-up the caregivers around children and adolescents to enhance emotional wellbeing, spot challenges early and know how to help effectively.

A list of some of the trainings delivered include:

- Understanding mental health and wellbeing in schools
- Fears – what are we most afraid of and why?
- Neurodiversity and how it presents with our pupils
- Understanding eating disorders
- Anti-bullying
- Personal safety
- Understanding emotions
- Building confidence and self-esteem
- Building resilience
- Exam anxiety
- Grief and bereavement
- How to support children through times of anxiety and war
- Understanding trauma



This year we completed a full year of weekly trainings and guidance to support Pastoral Leads. We covered topics on mental health and wellbeing including mental health first aid.

**Delivered in
15 schools**

Workshops for Parents

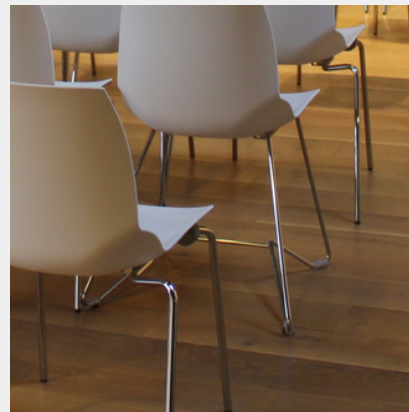
We believe in a holistic approach to supporting children. By working together with both schools and parents, we are able to best support communities.

Parent workshops were delivered on these topics:

- How to support children who are being bullied
- Help! My child is a bully
- Personal Safety – talking to children about boundaries and safe relationships
- Self-esteem and social maps
- How to help our children build resilience in an increasingly challenging world
- Guidance on how to support children through times of anxiety and war
- Understanding trauma



**Delivered
13 workshops**



FEEDBACK FROM SCHOOLS

Many thanks for a lovely workshop. Mrs Glatt presented the information very pleasantly and vividly, really engaging the children.

Mrs Kohane,
Curriculum Lead,
Beis Chinuch Primary
School

Thank you for the trainings; we have once again found them to be informative and practical, with fabulous PowerPoints. We have now booked the Exam Anxiety workshops for our pupils to effectively manage during exam season; they are keen for more sessions.

Rabbi Kahn, Headteacher, Yesodey Hatorah School

The Personal Safety workshops were particularly helpful for our adolescent teenage girls who appreciated the information and interactive sessions.

The advice offered for parents on Anxiety and Trauma regarding current affairs was valuable and supportive.

Mrs Freudenberger, DSL and Deputy
Headteacher, Beth Jacob Grammar
School

We've run these workshops for several years and have seen the tremendous difference it has made; that is why we keep coming back to Resolve Now. We look forward to our next training!

Rabbi Abeless, Headteacher, Belz Boys School



Therapy Sessions

Therapy sessions included one-to-one psychotherapy sessions and group sessions on social skills. Sessions boasted a 93% attendance rate.

Our creative and holistic approach helps our children and young adults be a part of their individual care plans.

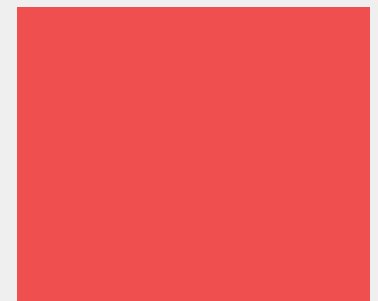
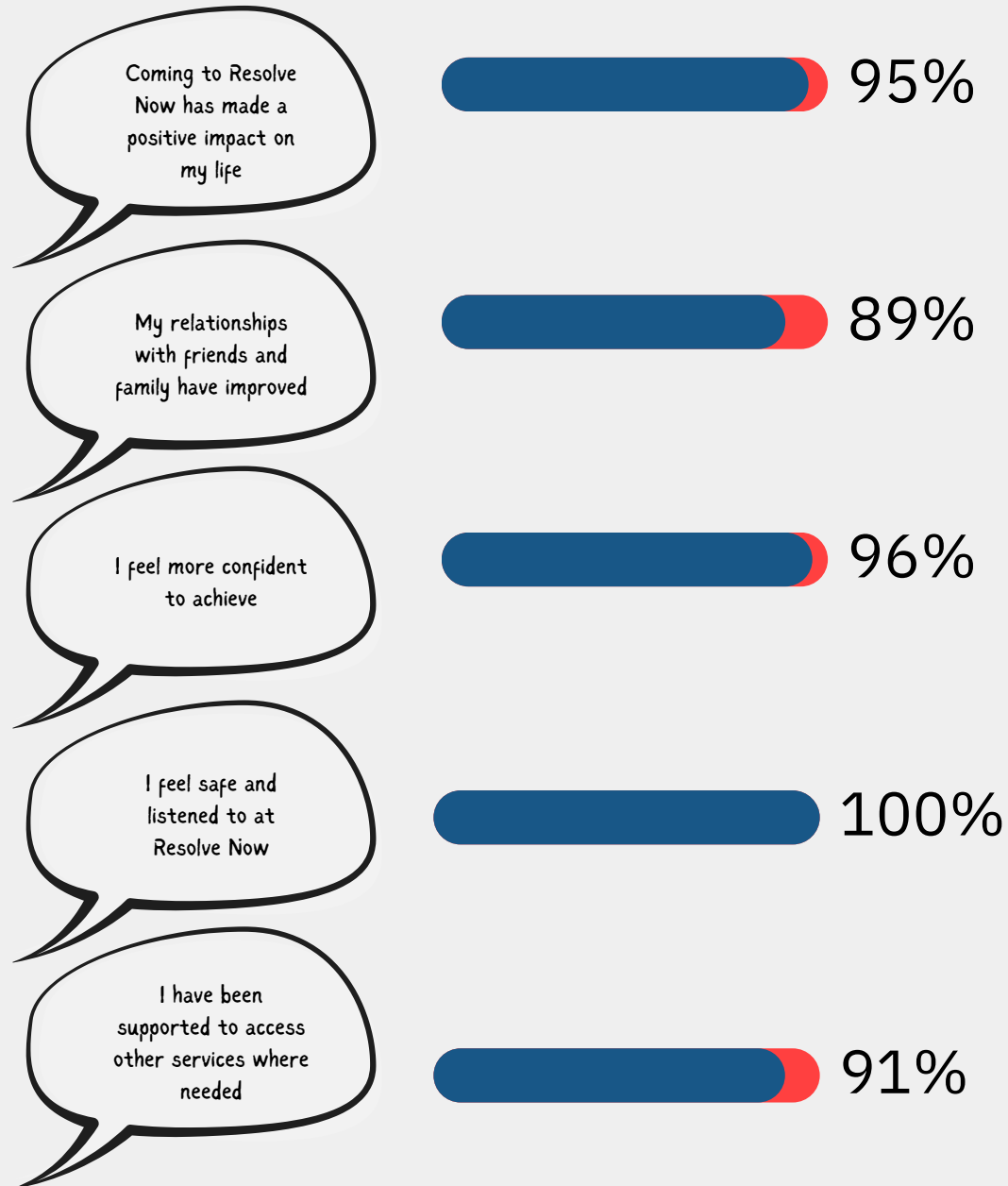
Resolve Now provides practical, emotional and therapeutic support for children and young adults in the community. They often face significant barriers to accessing support due to cultural needs. Resolve is often their only hope on the road to recovery.

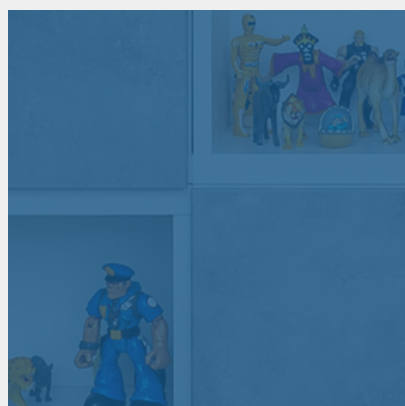
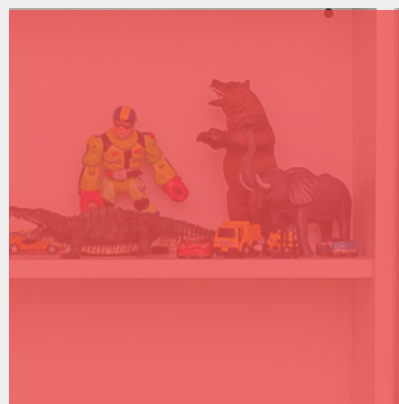


**Delivered
850 sessions**



Survey Results





You've changed my life.

I had no life, actually, when I first came, but now I feel happier and more confident. You were angels; absolutely heaven-sent.

Abigail, age 17

Family Support

Where a child or sibling is struggling with mental health, the entire family is affected.

It is easy to understand why a lot of support is offered to families struggling with physical illness and hospitalisations. But most people don't realise that mental health hospitalisations, too, often disrupt a family's day-to-day life and causes a lot of anxiety for children or siblings.

At Resolve Now we recognise the need to support the family through mental health challenges. We therefore send care packages during a challenging time for the family.



73 packages
sent to
48 families



Tailored Resources



Our information literature and resources are enormously helpful for professionals and their clients. It is wonderful that those with limited access to support can also receive helpful and culturally sensitive resources.



CASE STUDY

Leila*, age 14

From the voice of Leila's Headteacher:

Working with Resolve now has been enormously helpful. We were able to provide Leila with the right support throughout her time transitioning back to school. The trainings gave us new insight into what her challenges were and helped staff be more compassionate and encouraging.

From the desk of our Clinical Supervisor, Richard Simpson:

Leila was referred to us by her parents because of her refusal to attend school. Through her work in therapy it became apparent that Leila had experienced serious trauma that caused her anxiety to develop and hindered her ability to attend school.

Leila worked through her anxiety and challenges; she was a trooper! The team at Resolve Now produced a care plan that included working with Leila's school. We were able to train staff at school to understand her anxieties and how to best support her. We also guided the pastoral team on how to manage her panic attacks. Her parents struggled at first but with guidance were able to be incredibly supportive as Leila grappled with her anxieties, trauma and self-hate.

Leila was able to slowly get back to school and continue her education. She is now a much more self-aware person who is able to manage her challenges, contribute to her class and succeed in her studies.



CASE STUDY

Leila*, age 14

Excerpt from Leila's letter:

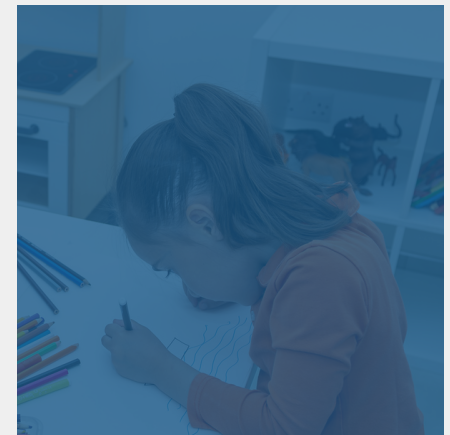
I felt like there was no way out. I was stuck and thought I deserved it. I couldn't go to school - I couldn't breathe. Everyone at school was managing and being successful and only I was different. As much as I was desperate to be in school and ace those exams, I didn't see the point in trying. I resorted to all kinds of behaviours to escape the pain. When my parents suggested I meet with Alice I refused to go and meet with another dumb therapist. But then I went and she was unreal - she just sat with me and then made me realise that I am worth it. With time we worked through my initial trauma and finally we took small steps to get back to life and school. I am writing this now because I've just received my exam results and I passed!!

I am crying now but they are happy tears, tears for having come out of the abyss, tears of hope for a brighter future.

From the voice of her parents:

It was a terribly difficult time for us as parents; we felt like failures. Our heart was pained knowing our daughter was struggling.. When we contacted Resolve Now, what a relief! - we finally had hope and were warmed by their compassion and competence. Not only were they Leila's cheerleaders, they were a rock of support for us and the family. Their guidance and advocacy were unbelievable, and those care packages...!

We are very grateful to Leila's headteacher who advised us to contact Resolve Now - it was an absolute game-changer. Like a butterfly, Leila has emerged better for it and we look forward to continue to see her flourishing.



Future Plans



It all seemed so hopeless; like an endless tunnel.

**Now I feel like there is a
brighter future ahead.**

Evie, age 16

Resolve Now was set up by a few courageous individuals who were determined to effect change and to erase the stigma of mental health, who have then continued to further expand services according to the growing need. Resolve Now still firmly retains its goal of bringing mental health issues to the forefront of London's community and supporting those in need. Identifying the necessity of education as a key form of prevention, Resolve Now works alongside schools to be proactive and helps children successfully deal with challenging situations. By creating more awareness and helping children early on, we can help them grow into healthy, successful adults.

We believe that early intervention is the key to solving many of the challenges of mental ill health that children experience later in life. Whether through training or therapy, we're here to make sure that all children are given the right foundation for life.

All our current and future programmes are in line with our vision of providing a specialised mental health centre that will support mental health needs in the most direct, effective way.

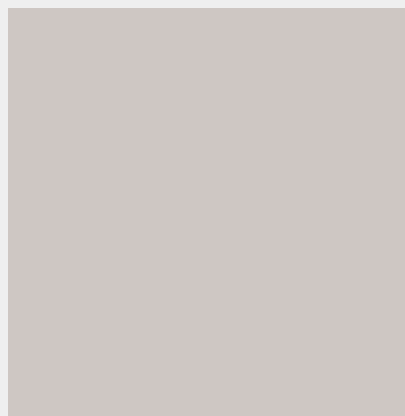
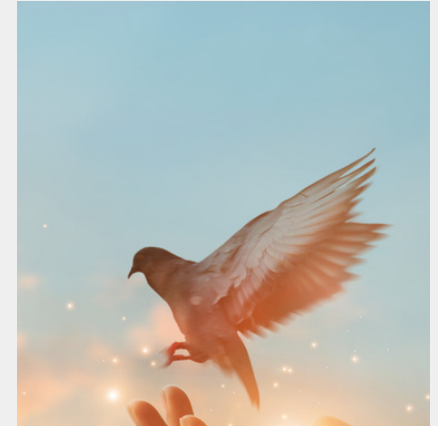
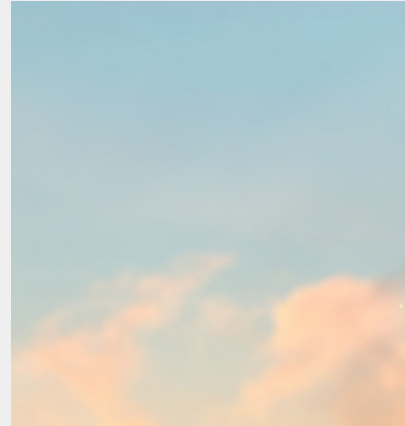
Future Plans

Pastoral Support: We work with pastoral leads and headteachers, providing them with mental health training. It has been an eye-opening experience for many. This has brought to light the need for skilling up staff at our schools to deal with issues, something we plan to address in the coming year.

School Programmes: We would like to enhance our trainings roster to better address need. We want to ensure schools are not limited in their choices of trainings, particularly in the vital areas of Personal Safety, E-Safety and Anti-Bullying. We plan to develop additional important workshops.

Resources: The need for more culturally-appropriate mental health resources is huge, as we have noted from the successful debut of our resources circulation. We plan to this year develop and circulate insightful, targeted resources.

Expanding Clinical Services: Upgrading standard therapy to provide more specialised support.



Financial Review

The Charity received total restricted grant income of £21,350, and donations including unrestricted grants of £53,565. Charitable expenditure was £47,142. The breakdown of the restricted grant income and expenditure can be seen in the notes to the accounts.

The charity had a brought forward balance of £1,505 of restricted funds, and received £21,350 of restricted grants this year. It spent £13,426 of restricted funds including the brought forward funds on various projects, including Psychotherapists and workshops, amongst other smaller expenses, leaving a balance on the restricted fund of £9,429, and £17,446 in the unrestricted fund.

The trustees plan to look for more funds in the coming years to extend the charity's services and programmes to its operating areas.

Risk Management

The trustees have a duty to identify and review the risks to which the charity is exposed and ensure appropriate controls are in place to provide reasonable assurance against fraud and error. The trustees have taken the necessary steps to reduce the impact of any financial risks exposed to the charity. The trustees have served throughout the current period. The power to appoint new trustees is vested in the current committee. No trustee received any payment for their services during the period.

Public Benefit

The trustees have taken note of the Charities rules and regulations and confirm that due regard has been taken of the public benefit guidance published by the Charity Commission.

Achievements and Performance

The charity extended its services during the period to the young people who had suffered bullying at school or outside or had mental issues and their families. The charity provided information through leaflets and reception at charity's office.

There were no related party transactions during the year.

Approval

The trustees' annual report was approved on 20 November 2023 and signed on behalf of the board of trustees by:



J Baumgarten
Trustee

20 November 2023

Independent Examiner's Report

TO THE TRUSTEES OF RESOLVE NOW
YEAR ENDED 31 MARCH 2023

I report to the trustees on my examination of the financial statements of Resolve Now ('the charity') for the year ended 31 March 2023.

Responsibilities and Basis of Report

As the trustees of the charity, you are responsible for the preparation of the financial statements in accordance with the requirements of the Charities Act 2011 ('the Act').

I report in respect of my examination of the charity's financial statements carried out under section 145 of the 2011 Act and in carrying out my examination I have followed all the applicable Directions given by the Charity Commission under section 145(5)(b) of the Act.

Independent Examiner's Statement

I have completed my examination. I confirm that no material matters have come to my attention in connection with the examination giving me cause to believe that in any material respect:

1. accounting records were not kept in respect of the charity as required by section 130 of the Act; or
2. the financial statements do not accord with those records; or
3. the financial statements do not comply with the applicable requirements concerning the form and content of accounts set out in the Charities (Accounts and Reports) Regulations 2008 other than any requirement that the accounts give a 'true and fair' view which is not a matter considered as part of an independent examination.

Approval

I have no concerns and have come across no other matters in connection with the examination to which attention should be drawn in this report in order to enable a proper understanding of the accounts to be reached.

Mr D Schwarz FCCA
Independent Examiner

2nd Floor - Parkgates
Bury New Road
Prestwich
Manchester
M25 0TL

20 November 2023

Statement of Financial Activities

YEAR ENDED 31 MARCH 2023

		Unrestricted funds £	2023 Restricted funds £	Total funds £	2022 Total funds £
	Note				
Income from Donations	4	53,565	—	53,565	3,900
Income from Charitable activities	5	—	21,350	21,350	9,350
Total income		<u>53,565</u>	<u>21,350</u>	<u>74,915</u>	<u>13,250</u>
Expenditure on raising funds	6	4,104	—	4,104	—
Expenditure on charitable activities	7,8	29,612	13,426	43,038	40,436
Total expenditure		<u>33,716</u>	<u>13,426</u>	<u>47,142</u>	<u>40,436</u>
Net income/(expenditure) and net movement in funds		<u>19,849</u>	<u>7,924</u>	<u>27,773</u>	<u>(27,186)</u>
Reconciliation of funds					
Total funds brought forward		(2,583)	1,505	(1,078)	26,108
Total funds carried forward		<u>17,266</u>	<u>9,429</u>	<u>26,695</u>	<u>(1,078)</u>

The statement of financial activities includes all gains and losses recognised in the year.
All income and expenditure derive from continuing activities.

The notes on pages 23 to 28 form part of these financial statements.

Statement of Financial Position

31 MARCH 2023

	Note	2023 £	2022 £
Fixed assets			
Tangible fixed assets	13	3,051	—
Current assets			
Cash at bank and in hand		26,470	8,902
Creditors: amounts falling due within one year	14	2,826	9,980
Net current assets		<u>23,644</u>	<u>(1,078)</u>
Total assets less current liabilities		<u>26,695</u>	<u>(1,078)</u>
Net assets		<u>26,695</u>	<u>(1,078)</u>
Funds of the charity			
Restricted funds		9,429	1,505
Unrestricted funds		17,266	(2,583)
Total charity funds	15	<u>26,695</u>	<u>(1,078)</u>

These financial statements were approved by the board of trustees and authorised for issue on 20 November 2023, and are signed on behalf of the board by:



J Baumgarten
Trustee

The notes on pages 23 to 28 form part of these financial statements.

Notes to the Financial Statements

YEAR ENDED 31 MARCH 2023

1. General Information

The charity is a public benefit entity and a registered charity in England and Wales and is unincorporated. The address of the principal office is 40 Riverside Road, London, N15 6DA.

2. Statement of Compliance

These financial statements have been prepared in compliance with FRS 102, 'The Financial Reporting Standard applicable in the UK and the Republic of Ireland', the Statement of Recommended Practice applicable to charities preparing their accounts in accordance with the Financial Reporting Standard applicable in the UK and Republic of Ireland (FRS 102) (Charities SORP (FRS 102)) and the Charities Act 2011.

3. Accounting Policies

Basis of Preparation

The financial statements have been prepared on the historical cost basis, as modified by the revaluation of certain financial assets and liabilities and investment properties measured at fair value through income or expenditure.

The financial statements are prepared in sterling, which is the functional currency of the entity.

Going Concern

There are no material uncertainties about the charity's ability to continue.

Judgements and Key Sources of Estimation Uncertainty

The preparation of the financial statements did not require management to make judgements, estimates or assumptions that affect the amounts reported.

Fund Accounting

Unrestricted funds are available for use at the discretion of the trustees to further any of the charity's purposes.

Designated funds are unrestricted funds earmarked by the trustees for particular future project or commitment.

Restricted funds are subjected to restrictions on their expenditure declared by the donor or through the terms of an appeal, and fall into one of two sub-classes: restricted income funds or endowment funds.

Incoming Resources

All incoming resources are included in the statement of financial activities when entitlement has passed to the charity; it is probable that the economic benefits associated with the transaction will flow to the charity and the amount can be reliably measured. The following specific policies are applied to particular categories of income:

- income from donations or grants is recognised when there is evidence of entitlement to the gift, receipt is probable and its amount can be measured reliably.
- legacy income is recognised when receipt is probable and entitlement is established.
- income from donated goods is measured at the fair value of the goods unless this is impractical to measure reliably, in which case the value is derived from the cost to the donor or the estimated resale value. Donated facilities and services are recognised in the accounts when received if the value can be reliably measured. No amounts are included for the contribution of general volunteers.
- income from contracts for the supply of services is recognised with the delivery of the contracted service. This is classified as unrestricted funds unless there is a contractual requirement for it to be spent on a particular purpose and returned if unspent, in which case it may be regarded as restricted.

Notes to the Financial Statements

YEAR ENDED 31 MARCH 2023

3. Accounting Policies *(continued)*

Resources Expended

Expenditure is recognised on an accruals basis as a liability is incurred. Expenditure includes any VAT which cannot be fully recovered, and is classified under headings of the statement of financial activities to which it relates:

- expenditure on raising funds includes the costs of all fundraising activities, events, non-charitable trading activities, and the sale of donated goods.
- expenditure on charitable activities includes all costs incurred by a charity in undertaking activities that further its charitable aims for the benefit of its beneficiaries, including those support costs and costs relating to the governance of the charity apportioned to charitable activities.
- other expenditure includes all expenditure that is neither related to raising funds for the charity nor part of its expenditure on charitable activities.

All costs are allocated to expenditure categories reflecting the use of the resource. Direct costs attributable to a single activity are allocated directly to that activity. Shared costs are apportioned between the activities they contribute to on a reasonable, justifiable and consistent basis.

Tangible assets

Tangible assets are initially recorded at cost, and subsequently stated at cost less any accumulated depreciation and impairment losses. Any tangible assets carried at revalued amounts are recorded at the fair value at the date of revaluation less any subsequent accumulated depreciation and subsequent accumulated impairment losses.

Tangible Assets *(continued)*

An increase in the carrying amount of an asset as a result of a revaluation, is recognised in other recognised gains and losses, unless it reverses a charge for impairment that has previously been recognised as expenditure within the statement of financial activities. A decrease in the carrying amount of an asset as a result of revaluation, is recognised in other recognised gains and losses, except to which it offsets any previous revaluation gain, in which case the loss is shown within other recognised gains and losses on the statement of financial activities.

Depreciation

Depreciation is calculated so as to write off the cost or valuation of an asset, less its residual value, over the useful economic life of that asset as follows:

Fixtures and fittings - 10% reducing balance

Impairment of Fixed Assets

A review for indicators of impairment is carried out at each reporting date, with the recoverable amount being estimated where such indicators exist. Where the carrying value exceeds the recoverable amount, the asset is impaired accordingly. Prior impairments are also reviewed for possible reversal at each reporting date.

For the purposes of impairment testing, when it is not possible to estimate the recoverable amount of an individual asset, an estimate is made of the recoverable amount of the cash-generating unit to which the asset belongs. The cash-generating unit is the smallest identifiable group of assets that includes the asset and generates cash inflows that largely independent of the cash inflows from other assets or groups of assets.

For impairment testing of goodwill, the goodwill acquired in a business combination is, from the acquisition date, allocated to each of the cash-generating units that are expected to benefit from the synergies of the combination, irrespective of whether other assets or liabilities of the charity are assigned to those units.

Notes to the Financial Statements

YEAR ENDED 31 MARCH 2023

3. Accounting Policies (continued)

Financial Instruments

A financial asset or a financial liability is recognised only when the charity becomes a party to the contractual provisions of the instrument.

Basic financial instruments are initially recognised at the amount receivable or payable including any related transaction costs.

Current assets and current liabilities are subsequently measured at the cash or other consideration expected to be paid or received and not discounted.

Debt instruments are subsequently measured at amortised cost.

Where investments in shares are publicly traded or their fair value can otherwise be measured reliably, the investment is subsequently measured at fair value with changes in fair value recognised in income and expenditure. All other such investments are subsequently measured at cost less impairment.

Other financial instruments, including derivatives, are initially recognised at fair value, unless payment for an asset is deferred beyond normal business terms or financed at a rate of interest that is not a market rate, in which case the asset is measured at the present value of the future payments discounted at a market rate of interest for a similar debt instrument.

Other financial instruments are subsequently measured at fair value, with any changes recognised in the statement of financial activities, with the exception of hedging instruments in a designated hedging relationship.

Financial Instruments (continued)

Financial assets that are measured at cost or amortised cost are reviewed for objective evidence of impairment at the end of each reporting date. If there is objective evidence of impairment, an impairment loss is recognised under the appropriate heading in the statement of financial activities in which the initial gain was recognised.

For all equity instruments regardless of significance, and other financial assets that are individually significant, these are assessed individually for impairment. Other financial assets are either assessed individually or grouped on the basis of similar credit risk characteristics.

Any reversals of impairment are recognised immediately, to the extent that the reversal does not result in a carrying amount of the financial asset that exceeds what the carrying amount would have been had the impairment not previously been recognised.

4. Donations

	Unrestricted Funds £	Total Funds 2023 £	Unrestricted Funds £	Total Funds 2022 £
Donations				
Donations	53,565	53,565	3,900	3,900
	<u>53,565</u>	<u>53,565</u>	<u>3,900</u>	<u>3,900</u>

Notes to the Financial Statements

YEAR ENDED 31 MARCH 2023

5. Income From Charitable Activities

	Restricted Funds	Total Funds 2023	Restricted Funds	Total Funds 2022
	£	£	£	£
Anti Bullying Programme	2,500	2,500	—	—
Therapy for Youngsters	17,350	17,350	4,350	4,350
Training for Schools	1,500	1,500	5,000	5,000
	<u>21,350</u>	<u>21,350</u>	<u>9,350</u>	<u>9,350</u>

6. Costs of Raising Funds

	Unrestricted Funds	Total Funds 2023	Unrestricted Funds	Total Funds 2022
	£	£	£	£
Fundraising expenses	4,104	4,104	—	—

7. Expenditure on Charitable Activities by Fund Type

	Unrestricted Funds	Restricted Funds	Total Funds 2023
	£	£	£
Anti Bullying Programme	4,585	2,500	7,085
Therapy For Young People	15,127	9,421	24,548
Training For Schools	7,302	1,505	8,807
Support costs	1,757	—	1,757
Governance Costs	840	—	840
	<u>29,611</u>	<u>13,426</u>	<u>43,037</u>

	Unrestricted Funds	Restricted Funds	Total Funds 2022
	£	£	£
Anti Bullying Programme	—	8,976	8,976
Therapy For Young People	—	19,193	19,193
Training For Schools	—	4,615	4,615
Support costs	7,052	—	7,052
Governance Costs	600	—	600
	<u>7,652</u>	<u>32,784</u>	<u>40,436</u>

8. Expenditure on Charitable Activities by Activity Type

	Activities undertaken directly	Support costs	Governance Costs	Total funds 2023	Total fund 2022
	£	£	£	£	£
Anti Bullying Programme	7,085	439	210	7,734	10,889
Therapy For Young People	24,548	878	420	25,846	23,019
Training For Schools	8,807	440	210	9,457	6,528
	<u>40,440</u>	<u>1,757</u>	<u>840</u>	<u>43,037</u>	<u>40,436</u>

Notes to the Financial Statements

YEAR ENDED 31 MARCH 2023

9. Net Income/(expenditure)

Net income/(expenditure) is stated after charging/(crediting):

	2023 £	2022 £
Depreciation of tangible fixed assets	339	—

10. Independent Examination Fees

	2023 £	2022 £
Fees payable to the independent examiner for: Independent examination of the financial statements	840	—

11. Staff Cost

The total staff costs and employee benefits for the reporting period are analysed as follows:

	2023 £	2022 £
Wages and salaries	15,987	16,465

The average head count of employees during the year was 3 (2022: 3). The average number of full-time equivalent employees during the year is analysed as follows:

	2023 No.	2022 No.
Number of staff	3	3

No employee received employee benefits of more than £60,000 during the year (2022: Nil).

12. Trustee Remuneration and Expenses

No remuneration or other benefits from employment with the charity or a related entity were received by the trustees.

13. Tangible Fixed Assets

	Fixtures and fittings £
Cost	
At 1 April 2022	—
Additions	3,390
At 31 March 2023	3,390
Depreciation	
At 1 April 2022	—
Charge for the year	339
At 31 March 2023	339
Carrying amount	
At 31 March 2023	3,051
At 31 March 2022	—

14. Creditors: Amounts Falling Due Within One Year

	2023 £	2022 £
Accruals and deferred income	840	600
Other creditors	1,986	9,380
	2,826	9,980

Notes to the Financial Statements

YEAR ENDED 31 MARCH 2023

15. Analysis of Charitable Funds

Unrestricted funds

	At 1 April 2022	Income	Expenditure	At 31 March 23
	£	£	£	£
General funds	(2,583)	53,565	(33,716)	17,266

	At 1 April 2021	Income	Expenditure	At 31 March 22
	£	£	£	£
General funds	1,169	3,900	(7,652)	(2,583)

Restricted funds

	At 1 April 2022	Income	Expenditure	At 31 March 23
	£	£	£	£
Restricted Fund	1,505	21,350	(13,426)	9,429

	At 1 April 2021	Income	Expenditure	At 31 March 22
	£	£	£	£
Restricted Fund	24,939	9,350	(32,784)	1,505

16. Analysis of Net Assets Between Funds

	Unrestricted Funds £	Restricted Funds £	Total Funds 2023 £
Tangible fixed assets	3,051	–	3,051
Current assets	17,041	9,429	26,470
Creditors less than 1 year	(2,826)	–	(2,826)
Net assets	17,266	9,429	26,695

	Unrestricted Funds £	Restricted Funds £	Total Funds 2022 £
Tangible fixed assets	–	–	–
Current assets	7,397	1,505	8,902
Creditors less than 1 year	(9,980)	–	(9,980)
Net assets	(2,583)	1,505	(1,078)

17. Taxation

Resolve Now is a registered charity and therefore is not liable to income tax on income derived from its charitable activities, as it falls within the various exemptions available to registered charities.

REFERENCE AND ADMINISTRATIVE DETAILS

Registered Charity Name	Resolve Now
Registered Charity Number	1189333
Principal Office	40 Riverside Road London N15 6DA
Trustees	J Baumgarten M Rothfeld I Lichtman
Independent Examiner	Mr D Schwarz FCCA 2nd Floor - Parkgates Bury New Road Prestwich Manchester M25 0TL

