



RICHARD SHEPHARD MUSIC FOUNDATION
(Charitable Incorporated Organisation)

REPORT AND FINANCIAL STATEMENTS
for the year ended
31 August 2025

RICHARD SHEPHARD MUSIC FOUNDATION
Charity Number: 1189066

REPORT AND FINANCIAL STATEMENTS
FOR THE YEAR ENDED 31 AUGUST 2025

CONTENTS	<i>Page</i>
Chair of Trustees' Report	<i>1</i>
Trustees' Report	<i>2 - 6</i>
Independent Examiner's Report	<i>7</i>
Statement of Financial Activities	<i>8</i>
Balance Sheet	<i>9</i>
Cash Flow Statement	<i>10</i>
Notes to the Accounts	<i>11 - 19</i>
Impact Report <i>(not forming part of the Report and Financial Statements)</i>	

RICHARD SHEPHARD MUSIC FOUNDATION

CHAIR OF TRUSTEES' REPORT FOR THE YEAR ENDED 31 AUGUST 2025

Chair of Trustees' Report for the year ended 31 August 2025

The Foundation was established to celebrate the life and works of Dr Richard Shephard, who died in 2021. Its main objective is to increase musical opportunities for young children, so they can experience the great many educational, health, and wellbeing benefits that music can bring.

This year marks a special milestone: many of the children on our Schools Programme have now enjoyed four years of weekly music lessons. We're well on track to reach our goal of teaching 10,000 children every week by 2026, which would mean nearly 1 in 7 primary-aged children in our region will be making music with us.

Independent evaluations and teacher feedback from our 34 partner schools revealed transformative results:

- 99% of staff reported improved confidence among pupils.
- 97% saw enhanced musical knowledge.
- 92% observed improvements in wellbeing.
- 94% said their school's standard of music teaching had improved.

"A massive thank you. The love of music you are instilling in children is wonderful and it's breathing life back into the curriculum. I have been very inspired by it!" Teacher, Crayke CofE Primary School

Half of the Foundation's partner schools have over 30% of pupils eligible for Free School Meals, and twelve are based in Arts Council England's 'Priority Places.' By focusing on these areas, RSMF is ensuring access to the social, emotional, and educational benefits of music for children who might otherwise miss out.

We're encouraged by the Government's recent curriculum review report which commits to ensuring 'that the arts are an entitlement within the national curriculum for every pupil, not an optional extra'. We think our work in the region is a practical example of how this can be delivered.

To our funders, schools, communities, music specialists, volunteers, and staff, thank you for helping to make it all happen.

Richard Grosberg
Chair of Trustees

RICHARD SHEPHARD MUSIC FOUNDATION

TRUSTEES' ANNUAL REPORT FOR THE YEAR ENDED 31 AUGUST 2025

The Trustees present their annual report together with the financial statements of the Charitable Incorporated Organisation (CIO) for the year ended 31 August 2025. The financial statements have been prepared in accordance with statutory requirements, the CIO's governing document and the Statement of Recommended Practice: Accounting and Reporting by Charities (SORP FRS 102).

Reference and Administrative Details of the Charity, its Trustees and Advisers

Charity Name and Number

Richard Shephard Music Foundation: registered charity number 1189066 (Charitable Incorporated Organisation)

Correspondence Address

29 Marygate, YORK, YO30 7DR

Trustees

Richard Grosberg (Chair)
The Hon Michael Benson MBE (Chair – resigned 31 December 2024)
Sir Ron Cooke (resigned 31 December 2024)
Professor Lynne Dawson
Edward Young
Andrea Hayes
David Pipe
James Downey

Chief Executive Officer: Cathy Grant

Bankers: Lloyds Bank, 1 Legg Street, CHELMSFORD, Essex, CM1 1JS

Independent Examiner: Adrian Rodaway BA, BFP, FCA, DChA, HPH Chartered Accountants, 54 Bootham, YORK, YO30 7XZ

Structure, Governance and Management

Nature of governing document

Richard Shephard Music Foundation is a Charitable Incorporated Organisation (CIO) governed by a foundation model constitution. The Charity was registered on 15 April 2020.

Recruitment and appointment of trustees

The Foundation must have no fewer than three Trustees and no more than eleven Trustees. The Trustees are the Members of the Foundation. The composition and skill base of the Trustee body is reviewed at least annually, with the aim of ensuring the mix of skills and experience needed to run the Foundation effectively. Trustees are appointed by the Trustee body for a period of up to three years, and may be reappointed.

A trustee skills audit was conducted in September 2025 and the board was considered to have a good range of skills necessary to oversee the charity. When trustees leave or take up a position, an induction/off boarding process is followed. The induction and training of new trustees depends on each individual's trustee experience but, as a minimum, includes: DBS check, 'role of a trustee' training, safeguarding training, and

RICHARD SHEPHARD MUSIC FOUNDATION

TRUSTEES' ANNUAL REPORT FOR THE YEAR ENDED 31 AUGUST 2025

Structure, Governance and Management (continued)

a general induction from CEO including: the charity's finances and a high level introduction to the charity's work and funders.

Remuneration of key management personnel

Pay and remuneration of key personnel is reviewed annually by the board of trustees. Remuneration is also bench-marked with charities of a similar size and activity to ensure that the remuneration set is fair and not out of line with that generally paid for similar roles.

Volunteers

The charity has a small number of volunteers (5 to 10) that are called on to assist with major events such as Make Music Day. Volunteers are all subject to DBS checks, receive training as necessary, and agree to adhere to the charity's Volunteer Policy.

Decision making

The charity holds four board meetings a year plus an annual Strategy Day for trustees and staff. In between these meetings, the finance committee meet three times. The trustees review high level strategy, the financial reports, and significant risks of the charity's operations. The day to day running of the organisation is delegated to the staff.

Objectives and Activities

The principal objects as stated in the governing document are to advance the musical education of children and young people in Yorkshire and such other areas as the Trustees shall from time to time determine, by enhancing the knowledge, experience, enjoyment, understanding and performance of music, including through some or all of tuition, master-classes, events, concerts and the use of assistive technology.

The charity's work is delivered through two core strands:

The flagship Schools Programme, providing weekly music sessions in primary schools across North Yorkshire and the North East; and

The Engagement Programme, which complements the school delivery through extracurricular and community-based activity, broadening access and reaching some of the most disadvantaged and isolated children.

The Engagement Programme includes **Music Explorers holiday clubs** (free music-making sessions primarily for disadvantaged children); and the annual **Make Music Day**, bringing together children from across the region for workshops led by professional musicians. Through this work the Foundation supports improved mental and emotional wellbeing, increased confidence and aspirations, enhanced musical skills and knowledge, and stronger music provision within schools.

RICHARD SHEPHARD MUSIC FOUNDATION

TRUSTEES' ANNUAL REPORT FOR THE YEAR ENDED 31 AUGUST 2025

Objectives and Activities (continued)

The need for our work and the difference it makes

Music education has declined significantly over the past decade. Nationally, **93% of children are excluded from arts education due to funding pressures**, and **42% of secondary schools no longer enter pupils for GCSE Music (1)**. Teacher shortages have further reduced provision: prior to joining our programme, **18% of partner schools did not deliver weekly music**, with one reporting no music at all. Following engagement with RSMF, average weekly music provision in these schools increased from **29 minutes to 56 minutes per pupil**.

Extensive research demonstrates the benefits of participatory arts activity for wellbeing, confidence, resilience and aspiration (2). Our own experience reflects this impact, particularly in schools serving disadvantaged communities. Pupils report feeling calmer, happier and more confident, while teachers highlight improved engagement, inclusion and motivation - especially among pupils with Special Educational Needs and Disabilities.

The Foundation's most recent teacher survey (July 2025) showed that following the music sessions:

- **98%** felt pupils' musical knowledge improved
- **99%** felt pupils were more confident
- **92%** felt pupils' wellbeing improved
- **79%** felt pupils' aspirations increased
- **94%** felt their school's music provision improved
- **71%** felt staff confidence in delivering music improved

Pupil feedback echoed these findings: **94%** could identify something they had learned and felt proud of, and **89%** said music made them feel more positive, describing sessions as joyful, empowering and safe.

Together, this evidence demonstrates the effectiveness of the model in improving access to high-quality music education, supporting wellbeing and confidence, and helping to reduce inequalities in cultural opportunity across our region.

(1) - N8 Research Partnership, *Child of the North: An evidence-based approach to creating a culture of inclusive opportunity through arts and creativity*, March 2025

(2) - APPG for Arts, Health & Wellbeing, *Creative Health: The Arts for Health and Wellbeing*, July 2017

The Trustees believe they have complied with the duty in section 17(5) of the Charities Act 2011 to have due regard to guidance published by the Charity Commission in regard to public benefit.

Key risks and uncertainties

The board of trustees review key risks and uncertainties in each board meeting. Key risks include:

- Fundraising environment uncertainty and school budget pressures; mitigations in place include diverse income streams and reserves policy.
- In light of a spate of recent cyber security attacks, the organisation is reviewing its cyber security provision.

RICHARD SHEPHARD MUSIC FOUNDATION

TRUSTEES' ANNUAL REPORT FOR THE YEAR ENDED 31 AUGUST 2025

Achievements and Performance

In the previous report the Foundation outlined plans for 2024/2025 – here is an update of what's been achieved:

Objective from last year's report	Update
2024/25 target: delivering music to 8,500 children	8,685 children received weekly music lessons, totalling 8,250 hours of high-quality music education. 34 partner schools participated – including new additions in East Yorkshire, Saltburn, Darlington, Richmond, and Selby.
We will continue to develop new services for our current schools/communities via partners and work with other providers as appropriate.	1,943 children took part in Foundation-led events, concerts, and community performances. The Foundation is exploring partnerships that would help support children taught on our programme in their next steps with music.
We will develop a plan to expand our engagement programme and events such as Make Music Day and our holiday club provision – more clubs in the most disadvantaged areas.	450 children joined the Foundation's biggest-ever <i>Make Music Day</i> , celebrating creativity and collaboration through live workshops and performances. 10 free "Music Explorers" holiday clubs reached 263 children, with an average of 57% eligible for Free School Meals – rising to 85% in Scarborough.
The Trustees decided generally that the emphasis of the organisation should shift from a strategy aimed primarily at growth to a focus on quality and evaluation, while at the same time retaining the balance of activities we undertake.	A specialist independent evaluator was commissioned to report on the impact of the Foundation's work. Evaluation will take place during 2025/2026, with a report available in July 2026.

Plans for Future Periods

Following a review of history and achievements to date, the trustees agreed to continue to develop the Schools Programme with the aim of reaching 10,000 children by school year 2026/2027. Overall, 10,000 children would equate to the charity teaching music to around 14% of children across the three local authority regions represented.

RICHARD SHEPHARD MUSIC FOUNDATION

TRUSTEES' ANNUAL REPORT FOR THE YEAR ENDED 31 AUGUST 2025

Financial Review

The charity maintained a balanced range of income sources during 2024/2025. The split of income was as follows:

Charitable Activities 43%
Trusts & Foundations & Grants 29%
Private Donors 22%
Gift Aid, Royalties and Other Income 6%

A focus on shifting to multi-year grants has paid off with nine funders committing to giving across three years. This has allowed RSMF to take on one extra team member onto the office team and will support the growth and sustainability of the school programme.

The total funds held by the Charity at 31 August 2025 amounted to £256,145 of which £nil related to restricted reserves. Free reserves, being unrestricted, undesignated funds not tied up in fixed assets, amounted to £254,746.

Reserves policy

The Trustees reviewed the reserves policy in September 2025 and agreed to aim to have 3 to 6 months of net projected expenditure, held in unrestricted reserves. Free reserves, being unrestricted, undesignated funds not committed to fixed assets, amounted to £254,746. This is within the range of the reserves policy.

Statement of Trustees' Responsibilities

Charity law requires the Trustees to prepare financial statements for each financial year which give a true and fair view of the Charity's financial activities during the year and of its financial position at the end of the year. In preparing the financial statements, the Trustees are required to:

- select suitable accounting policies and then apply them consistently;
- make judgements and estimates that are reasonable and prudent;
- state whether applicable Accounting Standards and Statements of Recommended Practice have been followed, subject to any departures disclosed and explained in the financial statements; and
- prepare the financial statements on the going concern basis unless it is inappropriate to presume that the charity will continue in operation.

The Trustees are responsible for keeping proper accounting records which disclose with reasonable accuracy the financial position of the charity and which enable them to ensure that the financial statements comply with the Charities Act 2011. They are responsible for safeguarding the assets of the charity and hence for taking reasonable steps for the prevention and detection of fraud and other irregularities.

Signed on behalf of the Trustees on 17 March 2026

Richard Grosberg
Chair

**INDEPENDENT EXAMINER'S REPORT TO THE TRUSTEES OF
RICHARD SHEPHARD MUSIC FOUNDATION**

I report to the trustees on my examination of the accounts of Richard Shephard Music Foundation for the year ended 31 August 2025.

This report is made solely to the Charity's Trustees, as a body, in accordance with Section 154 of the Charities Act 2011. My independent examination work has been undertaken so that I might state to the Charity's Trustees those matters I am required to state to them in an Independent Examiner's Report and for no other purpose. To the fullest extent permitted by law, I do not accept or assume responsibility to anyone other than the Charity and the Charity's Trustees as a body, for my independent examination work, for this report, or for the opinions I have formed.

Responsibilities and basis of report

As the charity trustees of the Charity you are responsible for the preparation of the accounts in accordance with the requirements of the Charities Act 2011 ('the Act').

I report in respect of my examination of the Charity's accounts carried out under section 145 of the 2011 Act and in carrying out my examination I have followed all the applicable Directions given by the Charity Commission under section 145(5)(b) of the Act.

Independent examiner's statement

Since the Charity's gross income exceeded £250,000 your examiner must be a member of a body listed in section 145 of the 2011 Act. I confirm that I am qualified to undertake the examination because I am a member of the Institute of Chartered Accountants in England and Wales, which is one of the listed bodies.

I have completed my examination. I confirm that no material matters have come to my attention in connection with the examination giving me cause to believe that in any material respect:

1. accounting records were not kept in respect of the Charity as required by section 130 of the Act; or
2. the accounts do not accord with those records; or
3. the accounts do not comply with the applicable requirements concerning the form and content of accounts set out in the Charities (Accounts and Reports) Regulations 2008 other than any requirement that the accounts give a 'true and fair view which is not a matter considered as part of an independent examination.

I have no concerns and have come across no other matters in connection with the examination to which attention should be drawn in this report in order to enable a proper understanding of the accounts to be reached.

Adrian Rodaway BA, BFP, FCA, DChA
HPH, Chartered Accountants
54 Bootham
YORK
YO30 7XZ

17 March 2026

RICHARD SHEPHARD MUSIC FOUNDATION

STATEMENT OF FINANCIAL ACTIVITIES FOR THE YEAR ENDED 31 AUGUST 2025

	Notes	Unrestricted Funds £	Restricted Funds £	2025 £	2024
Income and endowments from					
Donations and legacies	2	285,815	89,718	375,533	185,981
Charitable activities	3	287,917	-	287,917	284,241
Other income		1,300	-	1,300	1,556
Investment income		5,847	-	5,847	4,974
Total		580,879	89,718	670,597	476,752
Expenditure on:					
Charitable activities	4	432,229	135,688	567,917	505,265
Raising funds	5	57,998	-	57,998	54,060
Total		490,227	135,688	625,915	559,325
Net income/(expenditure)	6	90,652	(45,970)	44,682	(82,573)
Transfers between funds		-	-	-	-
Net movement in funds		90,652	(45,970)	44,682	(82,573)
Total funds brought forward at 1 September 2024		165,493	45,970	211,463	294,036
Total funds carried forward at 31 August 2025		£ 256,145	£ -	£ 256,145	£ 211,463

The notes on pages 11 to 19 form part of these accounts.

RICHARD SHEPHARD MUSIC FOUNDATION

BALANCE SHEET AT 31 AUGUST 2025

Charity Number: 1189066

	<i>Notes</i>	<i>31 August 2025 £</i>	<i>31 August 2024</i>
Fixed assets:			
Tangible assets	9	1,399	1,211
Current assets:			
Cash at bank and in hand		238,516	163,887
Debtors	10	21,383	53,941
<i>Total current assets</i>		259,899	217,828
Liabilities:			
Creditors: amounts falling due within one year	11	5,153	7,576
<i>Net current assets</i>		254,746	210,252
Total assets less current liabilities		£ 256,145	£ 211,463
The funds of the charity:			
<i>Unrestricted funds:</i>			
General funds	12	256,145	165,493
Restricted funds	13	-	45,970
Total charity funds		£ 256,145	£ 211,463

Approved by the Trustees on 17 March 2026 and signed on their behalf by:

Edward Young
Trustee

The notes on pages 11 to 19 form part of these accounts.

RICHARD SHEPHARD MUSIC FOUNDATION

**CASH FLOW STATEMENT
FOR THE YEAR ENDED 31 AUGUST 2025**

	Note	2025	2024
		£	£
Net cash provided by/(used in) operating activities	16	69,784	(100,998)
Cash flow from investing activities:			
Purchase of tangible fixed assets		(1,002)	(1,200)
Interest received		5,847	4,974
Net cash used in investing activities		4,845	3,774
Change in cash and cash equivalents in the year		74,629	(97,224)
Cash and cash equivalents at beginning of the year		163,887	261,111
Cash and cash equivalents at end of the year	17	£238,516	£163,887

The notes on pages 11 to 19 form part of these accounts.

RICHARD SHEPHARD MUSIC FOUNDATION

NOTES TO THE ACCOUNTS FOR THE YEAR ENDED 31 AUGUST 2025

1. ACCOUNTING POLICIES

a) Basis of preparation

The Accounts have been prepared in accordance with Accounting and Reporting by Charities: Statement of Recommended Practice applicable to charities preparing their accounts in accordance with the Financial Reporting Standard applicable in the UK and Republic of Ireland (FRS 102) (effective 1 January 2019) - (Charities SORP (FRS 102)), the Financial Reporting Standard applicable in the UK and Republic of Ireland (FRS102).

Richard Shephard Music Foundation meets the definition of a public benefit entity under FRS 102. Assets and liabilities are initially recognised at historical cost or transaction value unless otherwise stated in the relevant accounting policy note(s).

The principal address of the Charity is: 29 Marygate, YORK, YO30 7DR

b) Preparation of accounts on a going concern basis

The Trustees have a reasonable expectation that the Charity has sufficient resources to be able to continue in existence for the foreseeable future. They believe that the going concern basis is appropriate in the preparing the financial statements.

c) Funds structure

Unrestricted funds are funds which can be used in accordance with the charitable objects at the discretion of the Trustees. Designated funds are funds which have been set aside by the Trustees for a specific purpose. Restricted funds represent funds received for purposes restricted by the wishes of the donor.

d) Income

Income is recognised when the Charity has entitlement to the funds, any performance conditions attached to the item(s) of income have been met, it is probable that the income will be received and the amount can be reliably measured.

e) Expenditure

Expenditure is recognised once there is a legal or constructive obligation to make a payment to a third party, it is probable that settlement will be required and the amount of the obligation can be measured reliably. Expenditure is classified under the following activity headings:

Expenditure on charitable activities relates to activities undertaken to further the purposes of the charity and includes their associated support costs.

Support costs include central functions and governance costs, and have been allocated to activities on a basis consistent with the use of those resources, e.g. allocation of staff costs by time spent and other costs by their usage. Governance costs include those incurred in the governance of the charitable company and its assets and primarily associated with constitutional and statutory requirements.

Expenditure on raising funds relates to activities undertaken to raise funds for the Charity.

f) Taxation

As a registered charity, the Charity is exempt from the payment of Corporation tax in respect of its charitable activities.

RICHARD SHEPHARD MUSIC FOUNDATION

NOTES TO THE ACCOUNTS - CONTINUED FOR THE YEAR ENDED 31 AUGUST 2025

1. ACCOUNTING POLICIES (continued)

g) Debtors

Trade and other debtors are recognised at the settlement amount due after any trade discount offered.

h) Creditors and provisions

Creditors and provisions are recognised where the Charity has a present obligation resulting from a past event that will probably result in a transfer of funds to a third party and the amount due to settle the obligation can be measured or estimated reliably. Creditors and provisions are normally recognised at their settlement amount after allowing for any trade discounts due.

i) Cash at bank and in hand

Cash at bank and cash in hand includes cash and short term highly liquid investments with a short maturity of twelve months or less from the date of acquisition or opening of the deposit or similar account.

j) Fixed assets

Tangible fixed assets are depreciated over their expected useful lives at the following annual rates:

Computer equipment	over 3 years
Office furniture	over 5 years

k) Pension scheme

The Charity pays defined contributions into personal pension plans for its employees. Pension costs are charged to the Statement of Financial Activities (SOFA) and represent the contributions payable by the Charity in the period.

2. DONATIONS AND LEGACIES

	<i>Unrestricted Funds</i>	<i>Restricted Funds</i>	<i>2025</i>	<i>2024</i>
	£	£	£	£
Donations and grants	251,553	89,718	341,271	176,578
Gift Aid	34,262	-	34,262	9,403
	<u>£ 285,815</u>	<u>£ 89,718</u>	<u>£ 375,533</u>	<u>£ 185,981</u>

In 2024, donations and legacies totalling £112,125 related to restricted funds.

3. CHARITABLE ACTIVITIES

	<i>Unrestricted Funds</i>	<i>Restricted Funds</i>	<i>2025</i>	<i>2024</i>
Schools' fees	287,917	-	287,917	271,941
Other activities	-	-	-	12,300
	<u>£ 287,917</u>	<u>£ -</u>	<u>£ 287,917</u>	<u>£ 284,241</u>

In 2024, income from charitable activities totalling £12,300 related to restricted funds.

RICHARD SHEPHARD MUSIC FOUNDATION

NOTES TO THE ACCOUNTS - CONTINUED FOR THE YEAR ENDED 31 AUGUST 2025

4. ANALYSIS OF EXPENDITURE ON CHARITABLE ACTIVITIES

	<i>Unrestricted Funds</i>	<i>Restricted Funds</i>	<i>2025</i>	<i>2024</i>
	£	£	£	£
Costs directly allocated to activities:				
Cost of events	7,840	16,770	24,610	34,682
Freelance costs	1,200	-	1,200	900
Support for Schools Programme	5,784	103,721	109,505	96,756
Teaching fees	316,482	-	316,482	266,771
Wages and salaries	23,550	15,197	38,747	38,299
Support costs:				
Accountancy fees	1,142	-	1,142	1,990
Advertising, marketing and branding	13,304	-	13,304	8,397
Bank charges	130	-	130	113
Consultancy	6,111	-	6,111	-
Depreciation	814	-	814	1,116
Hospitality and entertainment	1,543	-	1,543	367
Insurance	2,343	-	2,343	1,988
IT software and consumables	4,018	-	4,018	3,682
Legal costs	-	-	-	180
Miscellaneous equipment	1,232	-	1,232	2,811
Office costs - light, heat, cleaning etc	2,120	-	2,120	3,377
Payroll costs	879	-	879	1,230
Photography	1,090	-	1,090	-
Printing, postage and stationery	3,943	-	3,943	1,467
Rent and service charges	7,940	-	7,940	8,090
Subscriptions	163	-	163	440
Staff training	1,154	-	1,154	559
Statutory accounts and Independent				
Examination fees	3,175	-	3,175	2,970
Sundry expenses	203	-	203	2,879
Telephone and internet	1,484	-	1,484	1,444
Travel and subsistence	1,492	-	1,492	996
Trustees' expenses	30	-	30	371
Wages and salaries	23,063	-	23,063	23,390
Total expenditure on charitable activities	£ 432,229	£ 135,688	£ 567,917	£ 505,265

In 2024, expenditure on charitable activities totalling £81,518 related to restricted funds.

RICHARD SHEPHARD MUSIC FOUNDATION

NOTES TO THE ACCOUNTS - CONTINUED FOR THE YEAR ENDED 31 AUGUST 2025

5. ANALYSIS OF EXPENDITURE ON RAISING FUNDS

	<i>Unrestricted Funds</i>	<i>Restricted Funds</i>	<i>2025</i>	<i>2024</i>
	£	£	£	£
Wages and salaries	57,581	-	57,581	53,486
Banking fees	417	-	417	294
Fundraising costs	-	-	-	280
	<u>£ 57,998</u>	<u>£ -</u>	<u>£ 57,998</u>	<u>£ 54,060</u>

In 2024, expenditure on raising funds totalling £117 related to restricted funds.

6. NET INCOME/EXPENDITURE FOR THE YEAR

The surplus (2024 - deficit) for the year is stated after charging:

	<i>2025</i>	<i>2024</i>
	£	£
Depreciation	814	1,116
Independent Examiner's remuneration	3,175	2,970
Other fees paid to Examiner	1,142	1,990
	<u>£ 5,131</u>	<u>£ 6,076</u>

7. STAFF COSTS AND TRUSTEES' REMUNERATION

	<i>2025</i>	<i>2024</i>
	£	£
Gross salaries and wages	108,820	106,624
Employer's pension contributions	4,413	4,177
Employer's national insurance contributions	6,158	4,374
	<u>£ 119,391</u>	<u>£ 115,175</u>

The average number of employees in the year was 3 (2024 - 3) . There were no employees with emoluments above £60,000 in the year (2024 - none).

Travel expenses totalling £30 were paid for 1 Trustee (2024 - £371 1 Trustee). No other remuneration, benefits or expenses were received by any of the Trustees who held posts during the year in respect of their services to the Charity.

The key management personnel of the Charity comprise the Trustees and the Chief Executive Officer. The total employee benefits of the key management personnel were £49,381 (2024 - £53,710).

8. RELATED PARTY TRANSACTIONS

Donations received from related parties in the year totalled £115,146 (2024 - £9,725). There were no other related party transactions.

RICHARD SHEPARD MUSIC FOUNDATION

NOTES TO THE ACCOUNTS - CONTINUED FOR THE YEAR ENDED 31 AUGUST 2025

9. FIXED ASSETS

	<i>Office furniture £</i>	<i>Computer equipment £</i>	<i>Total £</i>
<i>Cost:</i>			
At 1 September 2024	1,200	2,636	3,836
Additions	-	1,002	1,002
At 31 August 2025	<u>1,200</u>	<u>3,638</u>	<u>4,838</u>
<i>Depreciation:</i>			
At 1 September 2024	240	2,385	2,625
Charge for the year	240	574	814
At 31 August 2025	<u>480</u>	<u>2,959</u>	<u>3,439</u>
<i>Net book values</i>			
At 31 August 2025	<u>£ 720</u>	<u>£ 679</u>	<u>£ 1,399</u>
At 31 August 2024	<u>£ 960</u>	<u>£ 251</u>	<u>£ 1,211</u>

All fixed assets relate to unrestricted funds.

10. DEBTORS

	<i>Unrestricted Funds £</i>	<i>Restricted Funds £</i>	<i>2025 £</i>	<i>2024 £</i>
Trade debtors	1,056	-	1,056	6,457
Prepayments	892	-	892	26,101
VAT	19,233	-	19,233	21,326
Gift Aid recoverable	202	-	202	57
	<u>£ 21,383</u>	<u>£ -</u>	<u>£ 21,383</u>	<u>£ 53,941</u>

In 2024, no amounts related to restricted funds.

11. CREDITORS: amounts falling due within one year

	<i>Unrestricted Funds £</i>	<i>Restricted Funds £</i>	<i>2025 £</i>	<i>2024 £</i>
Accruals and deferred income	3,603	-	3,603	3,228
Trade creditors	753	-	753	3,727
Other creditors	797	-	797	621
	<u>£ 5,153</u>	<u>£ -</u>	<u>£ 5,153</u>	<u>£ 7,576</u>

In 2024, no amounts related to restricted funds.

RICHARD SHEPHARD MUSIC FOUNDATION
NOTES TO THE ACCOUNTS - CONTINUED
FOR THE YEAR ENDED 31 AUGUST 2025

12. UNRESTRICTED FUNDS

Current period

	<i>Balance b/f 01/09/2024</i>	<i>Incoming Resources</i>	<i>Resources Expended</i>	<i>Transfers</i>	<i>Balance c/f 31/08/2025</i>
General funds	165,493	580,879	(490,227)	-	256,145
Total unrestricted funds	£ 165,493	£ 580,879	£ (490,227)	£ -	£ 256,145

Comparative period

	<i>Balance b/f 01/09/2023</i>	<i>Incoming Resources</i>	<i>Resources Expended</i>	<i>Transfers</i>	<i>Balance c/f 31/08/2024</i>
<i>Designated funds</i>					
Schools Programme	160,000	-	(54,310)	(105,690)	-
<i>General funds</i>	130,856	352,327	(423,380)	105,690	165,493
Total unrestricted funds	£ 290,856	£ 352,327	£ (477,690)	£ -	£ 165,493

The Schools Programme represented the amount allocated towards the cost of supporting the work in schools. The Trustees have made the decision not to designate this going forward. The balance at the year end has, therefore, been transferred to general funds.

13. RESTRICTED FUNDS

Current period

	<i>Balance b/f 01/09/2024</i>	<i>Incoming Resources</i>	<i>Resources Expended</i>	<i>Balance c/f 31/08/2025</i>
Big Give Christmas Challenge	-	23,366	(23,366)	-
Hillards Trust	1,000	-	(1,000)	-
Holbeck Charitable Foundation	15,000	-	(15,000)	-
Easingwold District Community Care Association	-	547	(547)	-
York Music Hub, York Schools Programme	-	11,426	(11,426)	-
North Yorkshire County Council - HAF	-	3,290	(3,290)	-
Make Music Day	-	11,000	(11,000)	-
Cash for Causes	9,720	14,400	(24,120)	-
Shears Foundation	2,750	-	(2,750)	-
The Ed De Nunzio Charitable Trust	10,000	-	(10,000)	-
The Purey Cust Trust	7,500	-	(7,500)	-
Tees Foundation	-	2,500	(2,500)	-
Drax	-	2,000	(2,000)	-
Hull & East Riding Charitable Trust	-	1,750	(1,750)	-
Noble Charitable Trust	-	500	(500)	-
Victoria Wood Foundation	-	4,412	(4,412)	-
Didymus	-	9,527	(9,527)	-
The Feoffees of St Michael Spurriergate	-	5,000	(5,000)	-
	45,970	£ 89,718	£ (135,688)	£ -

RICHARD SHEPARD MUSIC FOUNDATION

NOTES TO THE ACCOUNTS - CONTINUED FOR THE YEAR ENDED 31 AUGUST 2025

13. RESTRICTED FUNDS (CONTINUED)

Comparative period

	<i>Balance b/f 01/09/2023</i>	<i>Incoming Resources</i>	<i>Resources Expended</i>	<i>Balance c/f 31/08/2024</i>
Big Give Christmas Challenge	-	10,000	(10,000)	-
Hillards Trust	-	1,000	-	1,000
Holbeck Charitable Foundation	-	30,000	(15,000)	15,000
Royal Birmingham Conservatoire	-	12,300	(12,300)	-
York Music Hub, York Schools Programme	-	22,931	(22,931)	-
North Yorkshire County Council - HAF	-	3,974	(3,974)	-
Make Music Day	-	4,000	(4,000)	-
Cash for Causes	3,180	9,720	(3,180)	9,720
Shears Foundation	-	5,500	(2,750)	2,750
The Ed De Nunzio Charitable Trust	-	10,000	-	10,000
The Purey Cust Trust	-	7,500	-	7,500
The Whitwam Family Charitable Foundation	-	7,500	(7,500)	-
	<u>3,180</u>	<u>£ 124,425</u>	<u>£ (81,635)</u>	<u>£ 45,970</u>

Big Give Christmas Challenge - Funding towards the expansion of the Schools Programme.

Hillards Trust - Funding towards York-based work.

Holbeck Charitable Foundation - Funding towards the expansion of our Schools Programme in 2024/2025.

Easingwold District Community Care Association - Funding towards club at Crayke Primary School.

York Music Hub, York Schools Programme - Funding to subsidise and develop the Schools Programme in York.

North Yorkshire County Council - HAF (Holiday Activities and Food) - Funding towards holiday clubs.

Make Music Day - Funding towards Make Music Day.

Cash for Causes - Funding towards providing weekly music at Eastfield primary schools.

Shears Foundation - Funding restricted towards our programme in York during 2023/2024 and 2024/2025 including schools programme, York holiday clubs, Make Music Day and proportion of related salaries and overheads.

The Ed De Nunzio Charitable Trust - Funding towards York-based work.

RICHARD SHEPHARD MUSIC FOUNDATION

NOTES TO THE ACCOUNTS - CONTINUED FOR THE YEAR ENDED 31 AUGUST 2025

13. RESTRICTED FUNDS (CONTINUED)

The Purey Cust Trust - Funding towards York-based work.

Tees Foundation - Funding towards work in Tees Valley schools.

Drax - Funding towards work in schools in Selby.

Hull & East Riding Charitable Trust - Funding towards work in schools in East Riding of Yorkshire.

Noble Charitable Trust - Funding towards work in rural schools.

Victoria Wood Foundation - Funding towards our Schools Programme and holiday clubs in North Yorkshire.

Didymus - Funding towards work in rural schools.

The Feoffees of St Michael Spurriergate - Funding to subsidise and develop our Schools Programme in York.

The Whitwam Family Charitable Foundation - Funding towards York-based work.

14. ANALYSIS OF NET ASSETS BETWEEN FUNDS

<i>Current period</i>	<i>Fixed Assets</i>	<i>Current assets</i>	<i>Current liabilities</i>	<i>Total</i>
	£	£	£	£
Unrestricted Funds	1,399	259,899	(5,153)	256,145
Restricted funds	-	-	-	-
	<u>£ 1,399</u>	<u>£ 259,899</u>	<u>£ (5,153)</u>	<u>£ 256,145</u>
 <i>Comparative period</i>	 <i>Fixed Assets</i>	 <i>Current assets</i>	 <i>Current liabilities</i>	 <i>Total</i>
	£	£	£	£
Unrestricted Funds	1,211	171,858	(7,576)	165,493
Restricted funds	-	45,970	-	45,970
	<u>£ 1,127</u>	<u>£ 217,828</u>	<u>£ (7,576)</u>	<u>£ 211,463</u>

15. PENSION SCHEMES

The Charity runs a defined contribution scheme. The pension charge for the year includes contributions payable to scheme of £4,413 (2024 - £4,177).

RICHARD SHEPHARD MUSIC FOUNDATION

**NOTES TO THE FINANCIAL STATEMENTS
FOR THE YEAR ENDED 31 AUGUST 2025**

16. RECONCILIATION OF NET INCOME TO NET CASH FLOW FROM OPERATING ACTIVITIES	2025 £	2024 £
Net income for the reporting period	44,682	(82,573)
Depreciation of tangible fixed assets	814	1,116
Interest received	(5,847)	(4,974)
(Increase)/Decrease in debtors	32,558	(15,111)
(Decrease)/Increase in creditors	(2,423)	544
	<hr/>	<hr/>
<i>Net cash provided by/(used in) operating activities</i>	£ 69,784	£ (100,998)
	<hr/>	<hr/>

17. ANALYSIS OF CASH AND CASH EQUIVALENTS

Cash at bank and in hand	238,516	163,887
	<hr/>	<hr/>
Total cash and cash equivalents	£ 238,516	£ 163,887
	<hr/>	<hr/>

ANALYSIS OF CHANGES IN NET DEBT

	At 01-Sep-24 £	Cash-flows £	At 31-Aug-25 £
Cash at bank and in hand	163,887	74,629	238,516
	<hr/>	<hr/>	<hr/>
	163,887	74,629	238,516
	<hr/>	<hr/>	<hr/>

The following pages do not form part of the Report and Financial Statements

RICHARD SHEPHARD

MUSIC

FOUNDATION



OUR IMPACT

2024 — 2025



HELP US REACH
10,000
CHILDREN BY 2026

“I’ve worked at this school for 23 years and I can honestly say this has been the best music programme the children have taken part in.”

Teacher, Clifton Green Primary School

WELCOME



This year marks a special milestone: many of the children on our Schools Programme have now enjoyed four years of weekly music lessons.

We're well on track to reach our goal of teaching 10,000 children every week by 2026, which would mean nearly 1 in 7 primary-aged children in our region will be making music with us.

In this report, we'll take you inside the classrooms, choirs, clubs, and concerts to show the real impact music is having on young lives.

And none of it would be possible without you. To our funders, schools, communities, music specialists, volunteers, and staff, thank you for helping to make it all happen.



Chair of Trustees Richard Grosberg and CEO Cathy Grant



"A massive thank you. The love of music you are instilling in children is wonderful and it's breathing life back into the curriculum. I have been very inspired by it!"



Teacher, Crayke CofE Primary School



Our Partner Schools

We have worked with **34 schools this year** - many have been on the programme from the beginning! We have welcomed new schools in East Yorkshire, Saltburn, Darlington, Richmond and Selby:

York	North Yorkshire	Tees Valley
Acomb Primary School	Pickering Community Junior School	Easterside Academy
Badger Hill Primary Academy	St George's VC Academy, Scarborough	Abingdon Primary School
Hob Moor Community Primary Academy	Slingsby Community Primary School	St Francis of Assisi CE Primary School
Clifton Green Primary School	St Mary's Catholic Primary School	Breckon Hill Primary School
Rufforth Primary School	Middleham And Spennithorne Primary Schools	Newham Bridge Primary School
Heworth CE Primary School	Croft CE Primary School	Fairfield Primary School
St Barnabas CE Primary School	Middleton Tyas CE Primary School	South Bank Primary School NEW
Carr Junior School	Barwic Parade Community Primary School	St John's CE Academy NEW
Poppleton Road Primary School	Crayke CE Primary School	Handale Primary School NEW
	Overdale Community Primary School	Marton Manor Primary School NEW
East Yorkshire	Braeburn Primary Academy	
Warter CE Primary School	Camblesforth Community Primary Academy	
	Richmond Methodist Primary School NEW	



THE DIFFERENCE WE MAKE

Celebrating a year of music, creativity and community



SCHOOLS & LESSONS



Partnered with
34 schools



Delivered weekly
music lessons to over
8,685 children



We delivered 8,250
hours of music
education over
the year



ENGAGEMENT PROGRAMME



Provided 34
events reaching
1,943 children



Welcomed 450
children to our
biggest-ever
Make Music Day



Delivered 10 Music
Explorers holiday
clubs, involving
263 children



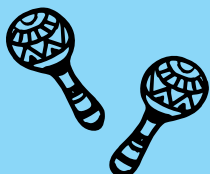
Why we're needed

The need for our work is evident. Research shows that children in our country lack opportunities to access music education, with significant inequality of access between children from lower- and higher-income households. The most recent *Child of the North* report found that **93% of children are being excluded from arts and cultural education due to a lack of funding in state schools**, with almost half (42%) of secondary schools no longer entering pupils for GCSE Music; and the same report said that **children from the most affluent backgrounds were three times more likely to sing in a choir or play in an**

orchestra than those in deprived areas. Our work directly addresses these inequalities, aiming to level the playing field for children across our region – reflecting our vision statement:

For all children to gain happiness from a lifelong love of music and to receive the social, emotional & educational benefits music can bring.

1. N8 Research Partnership, *Child of the North: An evidence-based approach to creating a culture of inclusive opportunity through arts and creativity*, March 2025



OUR IMPACT

Each year, we have our lessons independently evaluated – feedback from our lesson observers included:

“[The teacher’s] communication with pupils was very good – so important for nursery age – and it was a lovely lesson for the age group. If these nursery children continue having this programme they will be AMAZING musicians by the time they reach year 6!”

Feedback from our schools shows that our approach has powerful impact. Our most recent survey of staff at our partner schools found that, following our sessions:

- ➔ 97% felt their pupils’ **musical knowledge was improved**
- ➔ 99% felt their pupils were **more confident**
- ➔ 92% felt their pupils’ **wellbeing was improved**
- ➔ 79% felt their pupils’ **aspirations were increased**
- ➔ 94% felt their school’s **standard of music teaching was improved**

“[The teacher] is very knowledgeable of the syllabus and adept at the technical side, and good at keeping pupils engaged.”



Feedback from other parties included:

“It is obvious that the Richard Shephard Music Foundation are having an impact at Barwic Parade Primary School as we had two sisters who came to our holiday club at Selby Abbey who were enthusiastic about the singing and so proud that they are part of the school's choir. They were really keen and able singers and it was a joy to hear them talk so enthusiastically about music and singing in school.”

Feedback from another holiday club provider



OUR APPROACH



Consistent, accessible, hands on, primary music lessons for EVERY pupil EVERY week for as many years as possible.

What children learn on our Schools Programme

Our weekly music lessons, delivered with our partner Sing Education, start from nursery and reception with activities to build confidence then use active music making and plenty of singing to take children through a progressive programme throughout their primary years.

The lessons support schools to deliver the music curriculum and allow children to gain the following skills:



Musicianship: Pulse and Rhythm —

read and perform rhythms and maintain timing.

Musicianship: Pitch —

read and perform pitch notation, perform music with dynamics.

Singing & Performing —

sing with confidence and perform rounds and partner songs.

Instrumental Performance —

using keyboards, tuned percussion or melodic instruments to accompany and play complex melodies.

Composition and Improvisation —

planning and composing melodies.

Working in the communities that need it most

The children we work with face specific barriers to music:

- They are more likely to live in rural areas.
- They are more likely to be economically disadvantaged Measured via Index of Multiple Deprivation statistics and Free School Meals eligibility
- Twelve of our schools are in areas recognised by Arts Council England as Priority Places (Tees Valley and Selby). www.artscouncil.org.uk/your-area/priority-places.
- Half of our schools have more than 30% of pupils eligible for Free School Meals. In five of our schools, the figure is over 50%.



“Without the national curriculum acting as a constant musical thread, available in school, a young person may only experience music education through one-off or short-term opportunities, or may not be able to access music at all. This makes long-term sustained progression all-but impossible for some young people.”*



CASE STUDY MUSIC IS A KEY

We asked the children that featured in our Music is a Key film, what having more music in school means to them...

Jessica and Ivy have had classes at their school in Selby since September 2023. They've attended our Music Explorers holiday clubs and Make Music Day too!



"This year we've been learning composition skills - we've made our own music. ... It surprised me how people can play *Ode to Joy* at different speeds - it amazed me how fast some people can play! ... Sometimes people get stage fright, but I don't really anymore. I feel much more confident. I loved playing the ukulele this year."

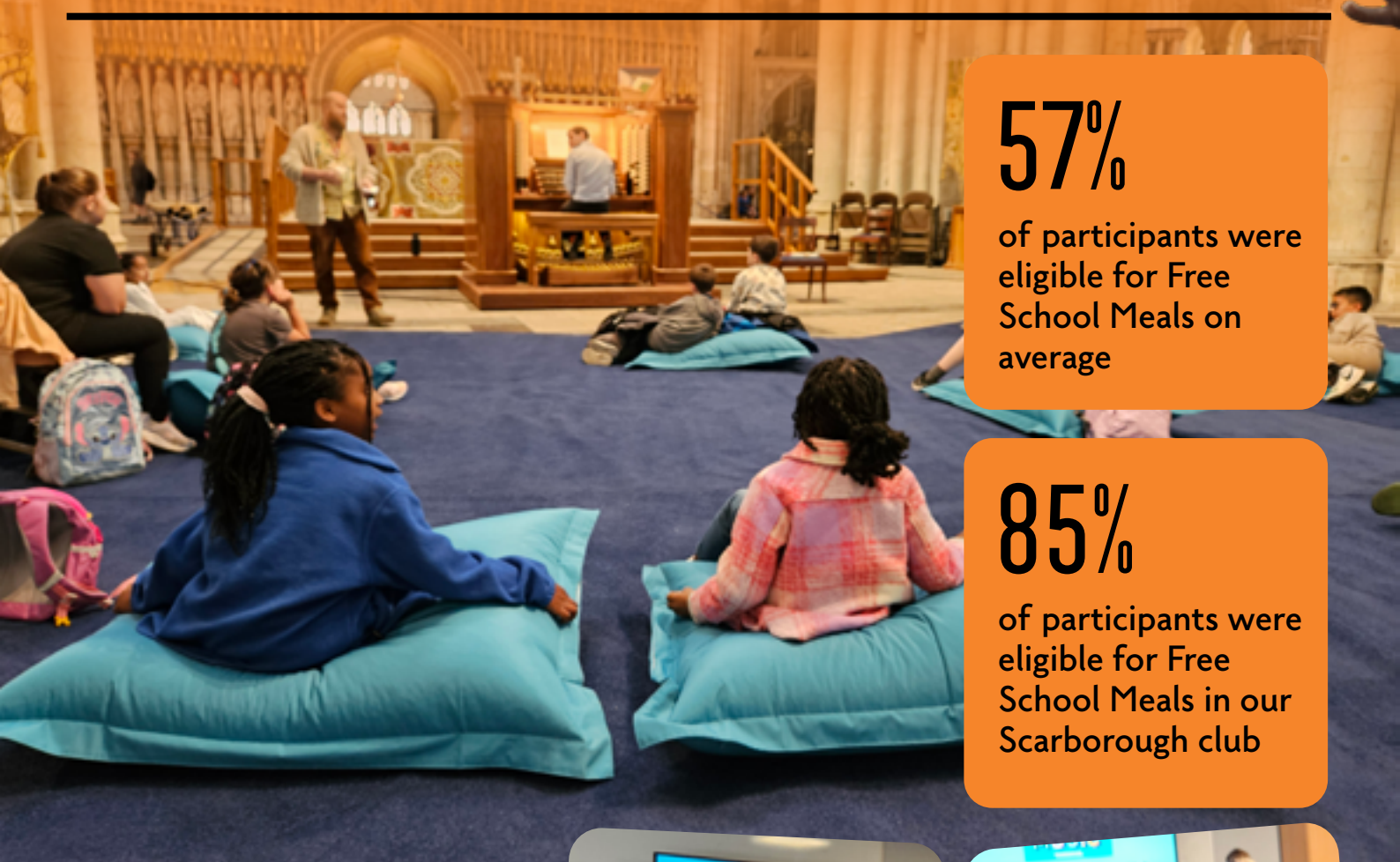
"This year we've learnt about legato, rhythm names and music keywords - like forte and piano, that means loud and quiet. ... It surprised me in choir when we did the World War 2 songs, I was not expecting that! ... (When I'm performing) I sometimes get a bit nervous, but sometimes I don't - and then I like to help other people if they feel nervous. I feel much more confident now than I used to. ... Music makes me feel safe, alive and overjoyed! ... My favourite thing in music this year has been learning all the songs."



Watch the film here: rb.gy/w6f585



CLUBS & EVENTS



57%

of participants were eligible for Free School Meals on average

85%

of participants were eligible for Free School Meals in our Scarborough club

Our Engagement Programme:

GROWING STRONGER EVERY YEAR

This year, our engagement work has continued to thrive, deepening connections with schools, communities, and musicians.



Music Explorers Holiday Clubs

We were thrilled to run ten free music holiday clubs across York and North Yorkshire, welcoming over 260 children!

These clubs are delivered in partnership with the Government's Holiday Activities and Food (HAF) Programme.

On average, 57% of participants were eligible for Free School Meals. Rising to 85% at our Scarborough club (against a national average of 26%).

From singing and drumming to DJ skills, ceilidhs, 'build a band' sessions, and visits to York Minster, children enjoyed a wide range of musical experiences - plus plenty of food and fun!






 Gabrieli Roar and Frances Marshall Photographer

BRINGING MUSIC TO SCHOOLS & COMMUNITIES



 Gabrieli Roar and Frances Marshall Photographer

Beyond the holiday clubs, we've created exciting opportunities for children in our partner schools to get involved in music:

Gabrieli Roar at York Minster

60 children from Barwic Parade (Selby) and Clifton Green (York) took part in choral workshops and a spectacular, sold-out Christmas performance.

Eastfield Christmas Celebration

Children from Overdale and St George's VC Academy performed festive songs for the community as part of the Eastfield Cash for Causes initiative, which has generously supported our work in three schools across the Eastfield estate.

Big Give Christmas Busking

Pupils from St Barnabas, Clifton Green, and Acomb Primary Schools busked to support our Big Give Christmas campaign – helping to raise an incredible £26,271.49!

Live Music in Schools

We brought talented musicians into schools to inspire the next generation and gave 200 children from rural schools a full day of music at Deer Shed Festival's Spark Schools Day.

Make Music Day

And of course, we celebrated with 450 children at our fourth Make Music Day - more on that next!

MAKE MUSIC DAY 2025

We welcomed **14 partner schools** and **450 children** to our fourth annual Make Music Day — and what a day it was!

From beatboxing and brass to a stunning orchestra from the Royal Birmingham Conservatoire, the workshops were bursting with energy, talent, and inspiration.

Huge thanks to the incredible musicians who led the sessions, and to our brilliant supporters and partner organisations who joined us to see the joy music brings. And of course – thank you to the schools, staff, and volunteers who make the music happen, every single day. Here are some comments from children that took part in the day...

Our trustee Andrea summed it up beautifully:



“Music inspires, unites and empowers. The Foundation brings that power into classrooms – ensuring every child, whatever their background, can access high-quality music teaching.”



“You guys are the best and very talented!”



“The orchestra was the best part of the day.”



“It was the best day of my life!”



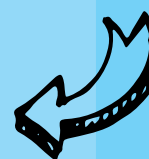
“Back Chat Brass was my favourite – the games were really fun!”





“Music should not be an enrichment only activity or framework; it is a fundamental part of a young person’s creative development.”*

SUPPORT US



In 2025–26, we expect the full cost of our programme to be in the region of £750,000.

That’s just **£75 per child** to receive a weekly music lesson throughout their whole school year, plus access to our other events!

Around half of our income will be raised through our Schools Programme – but the remainder must be raised through grants or charitable donations from individuals, trusts & foundations, and corporate partners.

If you’d like to support our work, there are several ways you can help:

Become a Friend of the Foundation

Friends of the Foundation benefit from newsletters keeping you updated about our work, key successes, and our events calendar. We also plan a few exclusive concerts and networking events each year to which Friends are invited.

To become a friend, we ask you to provide a regular monthly or annual donation to the charity. We leave you the flexibility to set the amount you want to give – the average monthly donation made by Friends of the Foundation is £26. Additionally, if you are a UK taxpayer, by saying yes to Gift Aid on your monthly donation, the Foundation can claim an extra 25p for every £1 you give at no additional cost to you.

Visit **www.rsmf.org.uk/support** for more details.

Make a one-off donation

Every penny we receive makes a difference. There are several ways you can make a one-off donation:

Online: Visit **donate.rsmf.org.uk/donate** to make an online donation of any amount of your choosing.

Bank transfer:

Richard Shephard Music Foundation, Lloyds Bank, Sort code: 30–96–26, Account number: 72571268

Cheque: Cheques can be sent by post to our office at 29 Marygate, York YO30 7DR – if you’d like to Gift Aid a donation by cheque, please do request a donation form (email **info@rsmf.org.uk** or phone **07845 878642**).

Spread the word

Raising the profile of the Richard Shephard Music Foundation is so valuable – if you’d like to see our sessions running in your local school, or know somebody who would love the work we do, please do let them know about us!

You can direct potential supporters or schools to an online copy of this Impact Report at:

www.rsmf.org.uk/our-impact





RICHARD SHEPHARD

MUSIC

FOUNDATION

www.rsmf.org.uk