



**RICHARD SHEPHARD MUSIC FOUNDATION**  
(Charitable Incorporated Organisation)

**REPORT AND FINANCIAL STATEMENTS**  
for the year ended  
31 August 2024

**RICHARD SHEPHARD MUSIC FOUNDATION**

**Charity Number: 1189066**

**REPORT AND FINANCIAL STATEMENTS  
FOR THE YEAR ENDED 31 AUGUST 2024**

<b>CONTENTS</b>	<b><i>Page</i></b>
Chairman's Report	<i>1 - 2</i>
Trustees' Report	<i>3 - 6</i>
Independent Examiner's Report	<i>7</i>
Statement of Financial Activities	<i>8</i>
Balance Sheet	<i>9</i>
Notes to the Accounts	<i>10 - 17</i>
Impact Report <i>(not forming part of the Report and Financial Statements)</i>	

# **RICHARD SHEPHARD MUSIC FOUNDATION**

## **CHAIRMAN'S REPORT FOR THE YEAR ENDED 31 AUGUST 2024**

### **Chairman's Report for the year ended 31 August 2024**

The Foundation was established following the death of Dr Richard Shephard in 2021. Its main objective is to increase musical opportunities for young children, so they can experience the great many educational, health, and wellbeing benefits that music can bring.

We have plenty to celebrate from the Foundation's third year of activity.

We have been able to extend our programme delivering music in schools from 22 to 28 primary schools. This meant that by the end of August 2024, 6,500 children in the region were receiving a subsidised weekly music lesson throughout their primary years. We hope to increase this to over 10,000 by 2026. The vast majority of our partner schools stay on the programme once they have joined, meaning we are able to deliver consistently in each community over a long period of time, with children in our earliest schools now receiving over three years of weekly music throughout primary school.

We have also been able to grow our programme of music holiday clubs and choirs with over 1,600 children being involved in our extracurricular music activities during this reporting period. At recent holiday clubs, the number of children attending who were eligible for Free School Meals averaged 57% - with one club in Scarborough where 85% of the children participating were eligible, and the number of children attending with special educational needs averaged 26%.

At the end of each club, the children attending put on a short performance for their parent/carers. We encourage the adults attending to join in with this performance, so although adults are not direct participants, there are opportunities for them to be involved and to do some family music-making.

To ensure we're making the most impact with our resources, we focus on delivering our Clubs in areas of high disadvantage – we currently run clubs in 4 key locations (Clifton in York, Eastfield in Scarborough, Ladgate in Middlesbrough, and Selby town), with additional Clubs where possible – including most recently in Hutton-le-Hole, Ryedale, aimed at children affected by rural isolation. Over the past 18 months we have also partnered with FEAST (North Yorkshire's Holiday Activities and Food scheme) to ensure that young people who are eligible for Free School Meals have priority access to the clubs we run in North Yorkshire and we recently received an award from them for '*Best Provider for Culture and Creativity*'.

Added to that, our annual Make Music Day involved over 300 children taking part in workshops with professional musicians at the Creative Centre at York St John University.

Watch our latest video here: [Make Music Day 2024 from Richard Shephard Music Foundation](#)

A full Impact Report for the year can be seen at the end of this report, or online here: <https://www.rsmf.org.uk/our-impact>

Our office team of three staff moved to new offices in Marygate York in early 2024. Through our contract with Sing Education (who recruit and train music specialists and deliver music in our schools), we have now been able to offer permanent teaching jobs to 13 musicians and a manager to oversee their development. We also have a network of talented, inspiring freelance musicians, who we use to deliver activities. We have a small team of committed volunteers who are vital to the smooth running of our larger events, and we intend to develop further volunteer opportunities as we grow.

As planned, our team of Trustees grew with three new Trustees appointed during the year. My fellow Trustee Ron Cooke and I will both have reached the end of our tenures on the Trustee Board by the time this report is published. We have both thoroughly enjoyed our roles in the Foundation and are incredibly grateful to the efforts of all former and present Trustees and staff.

**RICHARD SHEPHARD MUSIC FOUNDATION**

**CHAIRMAN'S REPORT  
FOR THE YEAR ENDED 31 AUGUST 2024**

This work would not have been possible without the vision of the late Dr Richard Shephard, the donors who have generously supported the Foundation, our partner organisations, especially Sing Education, and the schools on our programme. We owe you all a debt of gratitude and are pleased to have had another successful year working together.

**Michael Benson MBE**  
***Chairman (to 31 December 2024)***



## **RICHARD SHEPHARD MUSIC FOUNDATION**

### **TRUSTEES' ANNUAL REPORT FOR THE YEAR ENDED 31 AUGUST 2024**

The Trustees present their annual report together with the financial statements of the Charitable Incorporated Organisation (CIO) for the year ended 31 August 2024. The financial statements have been prepared in accordance with statutory requirements, the CIO's governing document and the Statement of Recommended Practice: Accounting and Reporting by Charities (SORP FRS 102).

#### **Reference and Administrative Details of the Charity, its Trustees and Advisers**

##### ***Charity Name and Number***

Richard Shephard Music Foundation: registered charity number 1189066 (Charitable Incorporated Organisation)

##### ***Correspondence Address***

29 Marygate, YORK, YO30 7DR

##### ***Trustees***

Richard Grosberg (Chair)  
The Hon Michael Benson MBE (Chair – resigned 31 December 2024)  
The Very Revd Dominic Barrington (resigned 17 November 2023)  
Phillip Breen (resigned 30 June 2024)  
Sir Ron Cooke (resigned 31 December 2024)  
Professor Lynne Dawson  
Edward Young  
Andrea Hayes (appointed 19 March 2024)  
David Pipe (appointed 19 March 2024)  
James Downey (appointed 19 March 2024)

Bankers: Lloyds Bank, 1 Legg Street, CHELMSFORD, Essex, CM1 1JS

Independent Examiner: Adrian Rodaway BA, BFP, FCA, DChA, HPH Chartered Accountants, 54 Bootham, YORK, YO30 7XZ

#### **Structure, Governance and Management**

##### ***Nature of governing document***

Richard Shephard Music Foundation is a Charitable Incorporated Organisation (CIO) governed by a foundation model constitution. The Charity was registered on 15 April 2020.

##### ***Recruitment and appointment of trustees***

The Foundation must have no fewer than three Trustees and no more than eleven Trustees. The Trustees are the Members of the Foundation. The composition and skill base of the Trustee body is reviewed at least annually, with the aim of ensuring the mix of skills and experience needed to run the Foundation effectively. Trustees are appointed by the Trustee body for a period of up to three years, and may be reappointed.

# RICHARD SHEPHARD MUSIC FOUNDATION

## TRUSTEES' ANNUAL REPORT FOR THE YEAR ENDED 31 AUGUST 2024

### Objectives and Activities

The principal objects as stated in the governing document are to advance the musical education of children and young people in Yorkshire and such other areas as the trustees shall from time to time determine, by enhancing the knowledge, experience, enjoyment, understanding and performance of music, including through some or all of tuition, master-classes, events, concerts and the use of assistive technology.

The Trustees believe they have complied with the duty in section 17(5) of the Charities Act 2011 to have due regard to guidance published by the Charity Commission in regard to public benefit.

### Achievements and Performance

In our previous report we outlined plans for 2023/2024 – here is an update of what's been achieved:

Objective from last year's report	Update
To deliver subsidised music lessons in primary schools for over 10,000 young people by 2026. 2023/24 target: delivering music to 6,500 children.	<b>Achieved.</b> We are now working in 28 primary schools and teaching over 6,500 children each week. We are on track to meet our target of 10,000 children by 2026.
To increase the impact and breadth of our community music activities, clubs, and choirs further to support our Schools Programme – focusing particularly on the areas of our region where young people have the greatest financial and geographical barriers to music.	<b>Achieved.</b> Over 1,600 children were involved in our community music activities during this reporting period with 47 events and performances held during the year.
To work with partners to guide children towards opportunities to continue their musical journey from 11+ (such as secondary school music, local choirs, bands, ensembles and orchestras, music hub services, and other music projects).	<b>Achieved.</b> During 2023/2024 we launched our 'Don't Stop the Music' web pages to help signpost children to local bands and choirs. This information was sent to all children leaving Year Six.

### Plans for Future Periods

We updated our Business Plan following our annual strategy day and reconfirmed our target to deliver subsidised music lessons in primary schools for over 10,000 young people by 2026. Specifically:

- 2024/25 target: delivering music to **8,500 children**
- 2025/26 target: delivering music to **10,000 children**

We will continue to develop new services for our current schools/communities via partners and work with other providers as appropriate.

We will develop a plan to expand our engagement programme and events such as Make Music Day and our holiday club provision – more clubs in the most disadvantaged areas.

The Trustees decided generally that the emphasis of the organisation should shift from a strategy aimed primarily at growth to a focus on quality and evaluation, while at the same time retaining the balance of activities we undertake.

## **RICHARD SHEPHARD MUSIC FOUNDATION**

### **TRUSTEES' ANNUAL REPORT FOR THE YEAR ENDED 31 AUGUST 2024**

#### **Financial Review**

We maintained a balanced range of income sources during 2023/2024. We were able to increase the percentage of income from charitable activities to 60% in line with the expansion of the schools programme, with the remainder of income being from other sources including grants and donations. We saw a steady increase in income from Trusts and Foundations following an increase in emphasis on funding applications. This helped counteract the inevitable fall in levels of private donations given in Richard's memory.

<b>2020/2021 (pre-launch/staff)</b>	<b>2021/2022</b>	<b>2022/2023</b>	<b>2023/24</b>
100% Private Donors	7% Charitable Activities 31% Private Donors 39% Trusts & Foundations 5% Gift Aid 18% Legacies, Royalties and Other Income	42% Charitable Activities 24% Private Donors 13% Trusts & Foundations 6% Gift Aid 6% Corporate Donors 6% Grants and Partners 3% Legacies, Royalties and Other Income	60% Charitable Activities 17% Trusts & Foundations 8% Private Donors 4% Corporate Donors 8% Grants and Partners 2% Gift Aid 1% Bank interest

It was agreed that the focus should now be on developing relationships with larger funders and shifting where possible to multi-year grants, while protecting the enviable balanced range of income.

The total funds held by the Charity at 31 August 2024 amounted to £211,463 of which £45,970 related to restricted reserves. Free reserves, being unrestricted, undesignated funds not tied up in fixed assets, amounted to £164,282.

#### ***Reserves policy***

The Trustees have agreed that we should aim to hold a minimum of one school term of running costs. In the current period these costs would be in the order of £144,000. Free reserves, being unrestricted, undesignated funds not committed to fixed assets, amounted to £164,282. This is in excess of the reserves policy and the funds will be applied to the Charitable Objects.

#### **Statement of Trustees' Responsibilities**

Charity law requires the Trustees to prepare financial statements for each financial year which give a true and fair view of the charity's financial activities during the year and of its financial position at the end of the year. In preparing the financial statements, the Trustees are required to:

- select suitable accounting policies and then apply them consistently;
- make judgements and estimates that are reasonable and prudent;
- state whether applicable Accounting Standards and Statements of Recommended Practice have been followed, subject to any departures disclosed and explained in the financial statements; and
- prepare the financial statements on the going concern basis unless it is inappropriate to presume that the charity will continue in operation.

The Trustees are responsible for keeping proper accounting records which disclose with reasonable accuracy the financial position of the charity and which enable them to ensure that the financial statements comply with the Charities Act 2011. They are responsible for safeguarding the assets of the charity and hence for taking reasonable steps for the prevention and detection of fraud and other irregularities.

**RICHARD SHEPHARD MUSIC FOUNDATION**

**TRUSTEES' ANNUAL REPORT  
FOR THE YEAR ENDED 31 AUGUST 2024**

Signed on behalf of the Trustees on 22 April 2025

Richard Grosberg  
*Chair*

**INDEPENDENT EXAMINER'S REPORT TO THE TRUSTEES OF  
RICHARD SHEPHARD MUSIC FOUNDATION**

I report to the trustees on my examination of the accounts of Richard Shephard Music Foundation for the year ended 31 August 2024.

This report is made solely to the Charity's Trustees, as a body, in accordance with Section 154 of the Charities Act 2011. My independent examination work has been undertaken so that I might state to the Charity's Trustees those matters I am required to state to them in an Independent Examiner's Report and for no other purpose. To the fullest extent permitted by law, I do not accept or assume responsibility to anyone other than the Charity and the Charity's Trustees as a body, for my independent examination work, for this report, or for the opinions I have formed.

**Responsibilities and basis of report**

As the charity trustees of the Charity you are responsible for the preparation of the accounts in accordance with the requirements of the Charities Act 2011 ('the Act').

I report in respect of my examination of the Charity's accounts carried out under section 145 of the 2011 Act and in carrying out my examination I have followed all the applicable Directions given by the Charity Commission under section 145(5)(b) of the Act.

**Independent examiner's statement**

Since the Charity's gross income exceeded £250,000 your examiner must be a member of a body listed in section 145 of the 2011 Act. I confirm that I am qualified to undertake the examination because I am a member of the Institute of Chartered Accountants in England and Wales, which is one of the listed bodies.

I have completed my examination. I confirm that no material matters have come to my attention in connection with the examination giving me cause to believe that in any material respect:

1. accounting records were not kept in respect of the Charity as required by section 130 of the Act; or
2. the accounts do not accord with those records; or
3. the accounts do not comply with the applicable requirements concerning the form and content of accounts set out in the Charities (Accounts and Reports) Regulations 2008 other than any requirement that the accounts give a 'true and fair view which is not a matter considered as part of an independent examination.

I have no concerns and have come across no other matters in connection with the examination to which attention should be drawn in this report in order to enable a proper understanding of the accounts to be reached.

Adrian Rodaway BA, BFP, FCA, DChA  
HPH, Chartered Accountants  
54 Bootham  
YORK  
YO30 7XZ

22 April 2025

**RICHARD SHEPHARD MUSIC FOUNDATION**

**STATEMENT OF FINANCIAL ACTIVITIES  
FOR THE YEAR ENDED 31 AUGUST 2024**

	<i>Notes</i>	<i>Unrestricted Funds £</i>	<i>Restricted Funds £</i>	<i>2024 £</i>	<i>2023</i>
<b>Income and endowments from</b>					
Donations and legacies	2	73,856	112,125	185,981	182,007
Charitable activities	3	271,941	12,300	284,241	138,625
Other income		1,556	-	1,556	9,274
Investment income		4,974	-	4,974	-
<b>Total</b>		<b>352,327</b>	<b>124,425</b>	<b>476,752</b>	<b>329,906</b>
<b>Expenditure on:</b>					
Charitable activities	4	423,747	81,518	505,265	314,678
Raising funds	5	53,943	117	54,060	23,033
<b>Total</b>		<b>477,690</b>	<b>81,635</b>	<b>559,325</b>	<b>337,711</b>
<b>Net income/(expenditure)</b>	6	<b>(125,363)</b>	<b>42,790</b>	<b>(82,573)</b>	<b>(7,805)</b>
Transfers between funds		-	-	-	-
<b>Net movement in funds</b>		<b>(125,363)</b>	<b>42,790</b>	<b>(82,573)</b>	<b>(7,805)</b>
Total funds brought forward at 1 September 2023		290,856	3,180	294,036	301,841
<b>Total funds carried forward at 31 August 2024</b>		<b>£ 165,493</b>	<b>£ 45,970</b>	<b>£ 211,463</b>	<b>£ 294,036</b>

*The notes on pages 10 to 17 form part of these accounts.*

**RICHARD SHEPHARD MUSIC FOUNDATION**

**BALANCE SHEET AT 31 AUGUST 2024**

Charity Number: 1189066

	<i>Notes</i>	<i>31 August 2024 £</i>	<i>31 August 2023</i>
<b>Fixed assets:</b>			
Tangible assets	9	1,211	1,127
		<hr/>	<hr/>
<b>Current assets:</b>			
Cash at bank and in hand		163,887	261,111
Debtors	10	53,941	38,830
		<hr/>	<hr/>
<i>Total current assets</i>		217,828	299,941
<b>Liabilities:</b>			
Creditors: amounts falling due within one year	11	7,576	7,032
		<hr/>	<hr/>
<i>Net current assets</i>		210,252	292,909
<b>Total assets less current liabilities</b>		£ 211,463	£ 294,036
		<hr/> <hr/>	<hr/> <hr/>
<b>The funds of the charity:</b>			
<i>Unrestricted funds:</i>			
General funds	12	165,493	130,856
Designated	12	-	160,000
Restricted funds	13	45,970	3,180
		<hr/>	<hr/>
<b>Total charity funds</b>		£ 211,463	£ 294,036
		<hr/> <hr/>	<hr/> <hr/>

Approved by the Trustees on 22 April 2025 and signed on their behalf by:

Edward Young  
Trustee

*The notes on pages 10 to 17 form part of these accounts.*

# **RICHARD SHEPHARD MUSIC FOUNDATION**

## **NOTES TO THE ACCOUNTS FOR THE YEAR ENDED 31 AUGUST 2024**

### **1. ACCOUNTING POLICIES**

#### **a) Basis of preparation**

The Accounts have been prepared in accordance with Accounting and Reporting by Charities: Statement of Recommended Practice applicable to charities preparing their accounts in accordance with the Financial Reporting Standard applicable in the UK and Republic of Ireland (FRS 102) (effective 1 January 2019) - (Charities SORP (FRS 102)), the Financial Reporting Standard applicable in the UK and Republic of Ireland (FRS102).

Richard Shephard Music Foundation meets the definition of a public benefit entity under FRS 102. Assets and liabilities are initially recognised at historical cost or transaction value unless otherwise stated in the relevant accounting policy note(s).

The principal address of the Charity is: 29 Marygate, YORK, YO30 7DR

#### **b) Preparation of accounts on a going concern basis**

The Trustees have a reasonable expectation that the Charity has sufficient resources to be able to continue in existence for the foreseeable future. They believe that the going concern basis is appropriate in the preparing the financial statements.

#### **c) Funds structure**

Unrestricted funds are funds which can be used in accordance with the charitable objects at the discretion of the Trustees. Designated funds are funds which have been set aside by the Trustees for a specific purpose. Restricted funds represent funds received for purposes restricted by the wishes of the donor.

#### **d) Income**

Income is recognised when the Charity has entitlement to the funds, any performance conditions attached to the item(s) of income have been met, it is probable that the income will be received and the amount can be reliably measured.

#### **e) Expenditure**

Expenditure is recognised once there is a legal or constructive obligation to make a payment to a third party, it is probable that settlement will be required and the amount of the obligation can be measured reliably. Expenditure is classified under the following activity headings:

Expenditure on charitable activities relates to activities undertaken to further the purposes of the charity and includes their associated support costs.

Support costs include central functions and governance costs, and have been allocated to activities on a basis consistent with the use of those resources, e.g. allocation of staff costs by time spent and other costs by their usage. Governance costs include those incurred in the governance of the charitable company and its assets and primarily associated with constitutional and statutory requirements.

Expenditure on raising funds relates to activities undertaken to raise funds for the charity.

#### **f) Taxation**

As a registered charity, the Charity is exempt from the payment of Corporation tax in respect of its charitable activities.



# RICHARD SHEPHARD MUSIC FOUNDATION

## NOTES TO THE ACCOUNTS - CONTINUED FOR THE YEAR ENDED 31 AUGUST 2024

### 1. ACCOUNTING POLICIES (continued)

#### g) Debtors

Trade and other debtors are recognised at the settlement amount due after any trade discount offered.

#### h) Creditors and provisions

Creditors and provisions are recognised where the Charity has a present obligation resulting from a past event that will probably result in a transfer of funds to a third party and the amount due to settle the obligation can be measured or estimated reliably. Creditors and provisions are normally recognised at their settlement amount after allowing for any trade discounts due.

#### i) Cash at bank and in hand

Cash at bank and cash in hand includes cash and short term highly liquid investments with a short maturity of twelve months or less from the date of acquisition or opening of the deposit or similar account.

#### j) Fixed assets

Tangible fixed assets are depreciated over their expected useful lives at the following annual rates:

Computer equipment	over 3 years
Office furniture	over 5 years

#### k) Pension scheme

The charity pays defined contributions into personal pension plans for its employees. Pension costs are charged to the Statement of Financial Activities (SOFA) and represent the contributions payable by the charity in the period.

### 2. DONATIONS AND LEGACIES

	<i>Unrestricted Funds</i>	<i>Restricted Funds</i>	<i>2024</i>	<i>2023</i>
	£	£	£	£
Donations and grants	64,453	112,125	176,578	163,297
Gift Aid	9,403	-	9,403	18,710
	<u>£ 73,856</u>	<u>£ 112,125</u>	<u>£ 185,981</u>	<u>£ 182,007</u>

In 2023, donations and legacies totalling £24,152 related to restricted funds.

### 3. CHARITABLE ACTIVITIES

	<i>Unrestricted Funds</i>	<i>Restricted Funds</i>	<i>2024</i>	<i>2023</i>
Schools' fees	271,941	-	271,941	138,625
Other activities	-	12,300	12,300	-
	<u>£ 271,941</u>	<u>£ 12,300</u>	<u>£ 284,241</u>	<u>£ 138,625</u>

In 2023, no amounts related to restricted funds.

# RICHARD SHEPHARD MUSIC FOUNDATION

## NOTES TO THE ACCOUNTS - CONTINUED FOR THE YEAR ENDED 31 AUGUST 2024

### 4. ANALYSIS OF EXPENDITURE ON CHARITABLE ACTIVITIES

	<i>Unrestricted Funds</i>	<i>Restricted Funds</i>	<i>2024</i>	<i>2023</i>
	£	£	£	£
<b>Costs directly allocated to activities:</b>				
Cost of events	19,217	15,465	34,682	15,161
Freelance costs	900	-	900	1,250
Support for Schools Programme	54,310	42,446	96,756	47,040
Teaching fees	266,771	-	266,771	153,187
Wages and salaries	14,692	23,607	38,299	38,924
<b>Support costs:</b>				
Accountancy fees	1,990	-	1,990	3,083
Advertising, marketing and branding	8,397	-	8,397	7,129
Bank charges	113	-	113	105
Depreciation	1,116	-	1,116	876
Hospitality and entertainment	367	-	367	345
Insurance	1,988	-	1,988	1,756
IT software and consumables	3,682	-	3,682	1,948
Legal costs	180	-	180	1,960
Miscellaneous equipment	2,811	-	2,811	359
Office costs - light, heat, cleaning etc	3,377	-	3,377	-
Payroll costs	1,230	-	1,230	1,080
Photography	-	-	-	379
Printing, postage and stationery	1,467	-	1,467	1,211
Recruitment	-	-	-	1,509
Rent and service charges	8,090	-	8,090	10,440
Subscriptions	440	-	440	93
Staff training	559	-	559	-
Statutory accounts and Independent				
Examination fees	2,970	-	2,970	2,775
Sundry expenses	2,879	-	2,879	745
Telephone and internet	1,444	-	1,444	744
Travel and subsistence	996	-	996	1,996
Trustees' expenses	371	-	371	327
Wages and salaries	23,390	-	23,390	20,256
<b>Total expenditure on charitable activities</b>	<b>£ 423,747</b>	<b>£ 81,518</b>	<b>£ 505,265</b>	<b>£ 314,678</b>

In 2023, expenditure on charitable activities totalling £20,972 related to restricted funds.

# RICHARD SHEPHARD MUSIC FOUNDATION

## NOTES TO THE ACCOUNTS - CONTINUED FOR THE YEAR ENDED 31 AUGUST 2024

### 5. ANALYSIS OF EXPENDITURE ON RAISING FUNDS

	<i>Unrestricted Funds</i>	<i>Restricted Funds</i>	<i>2024</i>	<i>2023</i>
	£	£	£	£
Wages and salaries	53,486	-	53,486	20,408
Banking fees	294	-	294	302
Fundraising costs	163	117	280	2,323
	<u>£ 53,943</u>	<u>£ 117</u>	<u>£ 54,060</u>	<u>£ 23,033</u>

In 2023, no amounts related to restricted funds.

### 6. NET INCOME/EXPENDITURE FOR THE YEAR

The deficit (2023 - deficit) for the year is stated after charging:

	<i>2024</i>	<i>2023</i>
	£	£
Depreciation	1,116	876
Independent Examiner's remuneration	2,970	2,775
Other fees paid to Examiner	1,990	3,083
	<u>£ 6,076</u>	<u>£ 6,734</u>

### 7. STAFF COSTS AND TRUSTEES' REMUNERATION

	<i>2024</i>	<i>2023</i>
	£	£
Gross salaries and wages	106,624	74,589
Employer's pension contributions	4,177	2,680
Employer's national insurance contributions	4,374	2,319
	<u>£ 115,175</u>	<u>£ 79,588</u>

The average number of employees in the year was 3 (2023 - 2) . There were no employees with emoluments above £60,000 in the year (2023 - none).

Travel expenses totalling £371 were paid for 1 Trustee (2023 - £327 1 Trustee). No other remuneration, benefits or expenses were received by any of the Trustees who held posts during the year in respect of their services to the Charity.

The key management personnel of the Charity comprise the Trustees and the Chief Executive Officer. The total employee benefits of the key management personnel were £53,710 (2023 - £50,600).

### 8. RELATED PARTY TRANSACTIONS

Donations received from related parties in the year totalled £9,725 (2023 - £39,192). There were no other related party transactions.

**RICHARD SHEPHARD MUSIC FOUNDATION**

**NOTES TO THE ACCOUNTS - CONTINUED  
FOR THE YEAR ENDED 31 AUGUST 2024**

**9. FIXED ASSETS**

	<i>Office furniture £</i>	<i>Computer equipment £</i>	<i>Total £</i>
<i>Cost:</i>			
At 1 September 2023	-	2,636	2,636
Additions	1,200	-	1,200
At 31 August 2024	1,200	2,636	3,836
<i>Depreciation:</i>			
At 1 September 2023	-	1,509	1,509
Charge for the year	240	876	1,116
At 31 August 2024	240	2,385	2,625
<i>Net book values</i>			
At 31 August 2024	£ 960	£ 251	£ 1,211
At 31 August 2023	£ -	£ 1,127	£ 1,127

All fixed assets relate to unrestricted funds.

**10. DEBTORS**

	<i>Unrestricted Funds £</i>	<i>Restricted Funds £</i>	<i>2024 £</i>	<i>2023 £</i>
Trade debtors	6,457	-	6,457	3,172
Prepayments	26,101	-	26,101	1,870
Accrued income	-	-	-	3,909
VAT	21,326	-	21,326	12,840
Gift Aid recoverable	57	-	57	262
Other debtors	-	-	-	16,777
	£ 53,941	£ -	£ 53,941	£ 38,830

In 2023, no amounts related to restricted funds.

**11. CREDITORS: amounts falling due within one year**

	<i>Unrestricted Funds £</i>	<i>Restricted Funds £</i>	<i>2024 £</i>	<i>2023 £</i>
Accruals and deferred income	3,228	-	3,228	3,402
Trade creditors	3,727	-	3,727	445
Other creditors	621	-	621	3,185
	£ 7,576	£ -	£ 7,576	£ 7,032

In 2023, no amounts related to restricted funds.

**RICHARD SHEPHARD MUSIC FOUNDATION**  
**NOTES TO THE ACCOUNTS - CONTINUED**  
**FOR THE YEAR ENDED 31 AUGUST 2024**

**12. UNRESTRICTED FUNDS**

***Current period***

	<i>Balance b/f 01/09/2023</i>	<i>Incoming Resources</i>	<i>Resources Expended</i>	<i>Transfers</i>	<i>Balance c/f 31/08/2024</i>
<b><i>Designated funds</i></b>					
Schools Programme	160,000	-	(54,310)	(105,690)	-
<b><i>General funds</i></b>	130,856	352,327	(423,380)	105,690	165,493
<b>Total unrestricted funds</b>	<u>£ 290,856</u>	<u>£ 352,327</u>	<u>£ (477,690)</u>	<u>£ -</u>	<u>£ 165,493</u>

The Schools Programme represented the amount allocated towards the cost of supporting the work in schools. The Trustees have made the decision not to designate this going forward. The balance at the year end has, therefore, been transferred to general funds.

***Comparative period***

	<i>Balance b/f 01/09/2022</i>	<i>Incoming Resources</i>	<i>Resources Expended</i>	<i>Transfers</i>	<i>Balance c/f 31/08/2023</i>
<b><i>Designated funds</i></b>					
Schools Programme	-	-	-	160,000	160,000
<b><i>General funds</i></b>	301,841	305,754	(316,739)	(160,000)	130,856
<b>Total unrestricted funds</b>	<u>£ 301,841</u>	<u>£ 305,754</u>	<u>£ (316,739)</u>	<u>£ -</u>	<u>£ 290,856</u>

**13. RESTRICTED FUNDS**

***Current period***

	<i>Balance b/f 01/09/2023</i>	<i>Incoming Resources</i>	<i>Resources Expended</i>	<i>Balance c/f 31/08/2024</i>
Big Give Christmas Challenge 2023	-	10,000	(10,000)	-
Hillards Trust	-	1,000	-	1,000
Holbeck Charitable Foundation	-	30,000	(15,000)	15,000
Royal Birmingham Conservatoire	-	12,300	(12,300)	-
York Music Hub, York Schools Programme	-	22,931	(22,931)	-
North Yorkshire County Council - HAF	-	3,974	(3,974)	-
Make Music Day	-	4,000	(4,000)	-
Cash for Causes	3,180	9,720	(3,180)	9,720
Shears Foundation	-	5,500	(2,750)	2,750
The Ed De Nunzio Charitable Trust	-	10,000	-	10,000
The Purey Cust Trust	-	7,500	-	7,500
The Whitwam Family Charitable Foundation	-	7,500	(7,500)	-
	<u>3,180</u>	<u>£ 124,425</u>	<u>£ (81,635)</u>	<u>£ 45,970</u>

# RICHARD SHEPHARD MUSIC FOUNDATION

## NOTES TO THE ACCOUNTS - CONTINUED FOR THE YEAR ENDED 31 AUGUST 2024

### 13. RESTRICTED FUNDS (CONTINUED)

#### *Comparative period*

	<i>Balance b/f 01/09/2022</i>	<i>Incoming Resources</i>	<i>Resources Expended</i>	<i>Balance c/f 31/08/2023</i>
Big Give Christmas Challenge 2022	-	4,970	(4,970)	-
York Music Hub, Make Music Day	-	1,500	(1,500)	-
Cash for Causes	-	3,180	-	3,180
Shears Foundation (staffing)	-	5,000	(5,000)	-
York Music Hub, York Schools Programme	-	8,984	(8,984)	-
North Yorkshire County Council - HAF	-	518	(518)	-
	<u>-</u>	<u>£ 24,152</u>	<u>£ (20,972)</u>	<u>£ 3,180</u>

Big Give Christmas Challenge 2023 - Funding towards the expansion of the Schools Programme.

Hillards Trust - Funding towards York-based work.

Holbeck Charitable Foundation - Funding towards the expansion of our Schools Programme in 2024/2025.

Royal Birmingham Conservatoire - Kodaly Inspired Singing Scholarships

York Music Hub, York Schools Programme - Funding to subsidise and develop the Schools Programme in York.

North Yorkshire County Council - HAF (Holiday Activities and Food) - Funding towards holiday clubs.

Make Music Day - Funding towards Make Music Day.

Cash for Causes - Funding towards providing weekly music at Eastfield primary schools.

Shears Foundation - Funding restricted towards our programme in York during 2023/2024 and 2024/2025 including schools programme, York holiday clubs, Make Music Day and proportion of related salaries and overheads.

The Ed De Nunzio Charitable Trust - Funding towards York-based work.

The Purey Cust Trust - Funding towards York-based work.

The Whitwam Family Charitable Foundation - Funding towards York-based work.

Big Give Christmas Challenge 2022 - Funding towards the programme of music holiday clubs during 2023.

York Music Hub, Make Music Day - Funding towards Make Music Day.

Shears Foundation (staffing) - Funding towards core staffing costs to expand the Schools Programme in York schools.

**RICHARD SHEPHARD MUSIC FOUNDATION**

**NOTES TO THE ACCOUNTS - CONTINUED  
FOR THE YEAR ENDED 31 AUGUST 2024**

**14. ANALYSIS OF NET ASSETS BETWEEN FUNDS**

<b><i>Current period</i></b>	<i>Fixed Assets</i>	<i>Current assets</i>	<i>Current liabilities</i>	<i>Total</i>
	£	£	£	£
Unrestricted Funds	1,211	171,858	(7,576)	165,493
Restricted funds	-	45,970	-	45,970
	<u>£ 1,211</u>	<u>£ 217,828</u>	<u>£ (7,576)</u>	<u>£ 211,463</u>
<b><i>Comparative period</i></b>	<i>Fixed Assets</i>	<i>Current assets</i>	<i>Current liabilities</i>	<i>Total</i>
	£	£	£	£
Unrestricted Funds	1,127	296,761	(7,032)	290,856
Restricted funds	-	3,180	-	3,180
	<u>£ 1,127</u>	<u>£ 299,941</u>	<u>£ (7,032)</u>	<u>£ 294,036</u>

*The following pages do not form part of the Report and Financial Statements*



RICHARD SHEPHARD

# MUSIC

FOUNDATION



## OUR IMPACT

2023 — 2024





"It's heart-warming to hear about the remarkable progress of the Foundation's work - 10,000 children in the next three years would be incredible and will no doubt have an immensely positive impact on their lives."

Kathryn Rudge, Mezzo-Soprano and Patron of RSMF





# WELCOME

In 2020, while struggling with the impact of Motor Neurone Disease, Dr Richard Shephard and a group of friends began discussing the problem of inequality of access to music education. Who could have imagined that four years later, the lives of thousands of children in our region would have been enriched with so much more music?

Much sadness and loss was felt following Richard's death in 2021, but much has been achieved in his memory.

These past few years have shown that when passionate people in charities and schools work together with musicians, funders and communities, great things can happen.

As we look forward, we're excited to explore new avenues to ensure every child experiences the benefits of a high quality music education, wherever they live and whatever their background.

Please join us in thanking all involved in funding or delivering this work as we celebrate achievements and dream of even greater harmonies to come!

"Thank you so much for all that you are doing. It makes such a HUGE difference to children's musical opportunities especially for those who may not have the chance to do these things otherwise."

School Teacher



Chair of Trustees Hon Michael Benson MBE  
CEO Cathy Grant

## What's been achieved?

**6,500** children are now receiving **WEEKLY** music lessons throughout their primary years

During 2023/2024 that equated to **7,256** hours of music.

We've also held **47** events and performances this year involving **1,600** children.



# NORTH YORKSHIRE

➔ **1,637**

children taught music in this region weekly.

- ➔ Our schools here have as many as 63% of their pupils eligible for Free School Meals.
- ➔ Holiday Clubs in Scarborough and Selby provide free fun, food and music in the school holidays part funded by the government's Holiday Activities and Food scheme, targeted directly to those families that need it most.
- ➔ Our Scarborough Schools Programme is delivered with support from Eastfield Cash for Causes.

Children from our partner school Barwic Parade have not only had a boost to their weekly music but also have enjoyed becoming stars of the stage and screen, singing in the beautiful Selby Abbey, featuring on Look North and starring in our new film 'Music is a Key'. Thank you Barwic Parade for the warm welcome and partnership!



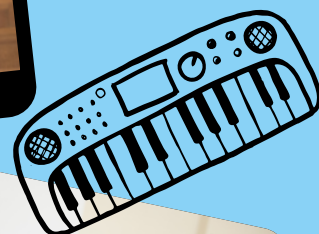
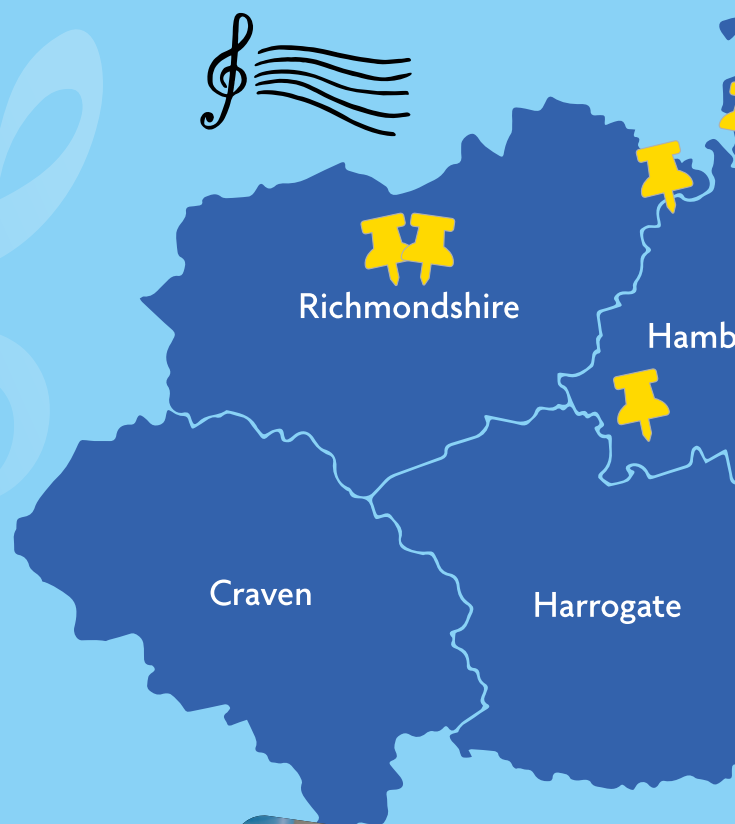
Visit the Richard Shephard Music Foundation page on YouTube to see the film.

📺 @richardshephardmusicfounda7492

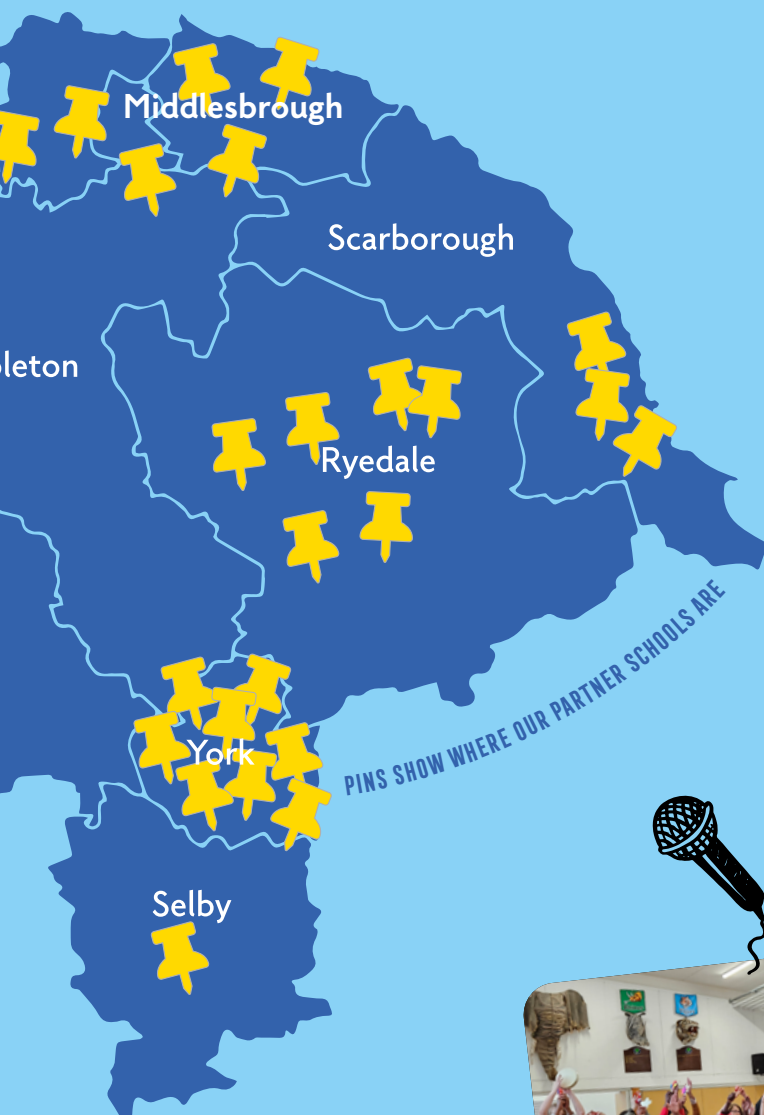
*"Music is now part of our daily life here at Barwic, even when RSMF is not in school, music has become a key feature."*

Headteacher, Barwic Parade Community Primary School

# REGIONAL



# HIGHLIGHTS



## TEES VALLEY

➔ **2,956**

children taught music in this region weekly.

➔ Our schools here have as many as **58%** of their pupils eligible for Free School Meals.

Maisie\* (10) lives in Easterside, Middlesbrough, one of the 16% most deprived areas in England (2019 Indices of Multiple Deprivation). She has been taking music lessons with RSMF for three years. Despite learning difficulties and struggles in school, Maisie consistently engages in music sessions: *"I feel excited when I have my music lesson – I like singing and dancing."*

She doesn't attend other extracurricular activities but has joined five RSMF Holiday Clubs and two Make Music Day celebrations, performing at York Minster and Yarm Auditorium. RSMF has nurtured her love of music, and she's inspired to keep learning: *"If I could play an instrument, I'd choose the xylophone, but maybe guitar or piano when I'm older."*



## YORK

➔ **1,877**

children taught music in this region weekly.

➔ Schools Programme delivered in partnership with York Music Hub.

➔ Our schools here have as many as **40%** of their pupils eligible for Free School Meals.

➔ Holiday Clubs at Clifton Green Primary (in the 15% most deprived neighbourhoods in England) provide free fun, food and music in the school holidays.

Our partner school Hob Moor Primary is based in Westfield Ward – one of the most deprived wards in York. It has the highest percentage of children living in low income families across the entire city – almost twice the York average. More than a third (36%) of pupils at the school are eligible for Free School Meals.

*"Jack\* has gained lots of confidence in his own ability and is more forthcoming in music lessons with his ideas and performing in front of his peers."*

Teacher, Hob Moor Primary Academy

\*not his/her real name

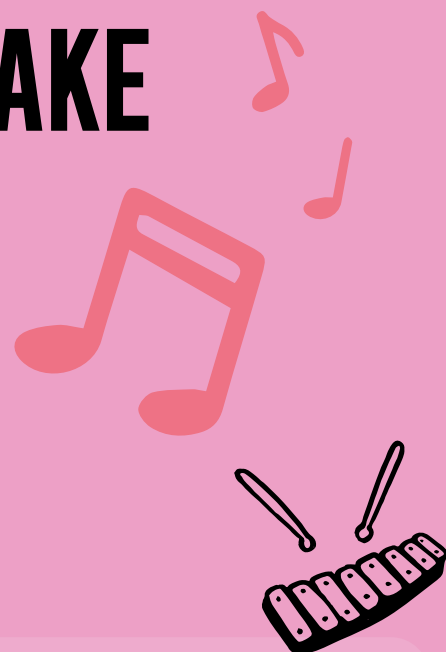


# THE DIFFERENCE WE MAKE

Our vision is for all children to gain happiness from a lifelong love of music and to receive the social, emotional & educational benefits music can bring.

To achieve this goal, we have two key aims –

**Improving children's life chances** and **Improving music education** – which guide the work we deliver, through which we aim to achieve our five key outcomes:



## WELLBEING

For children to have improved mental and emotional wellbeing



## KNOWLEDGE

For children to have improved skills and knowledge around music



# CONFIDENCE

For children to have increased confidence

## What children learn on our Schools Programme

Our weekly music lessons, delivered with our partner Sing Education, start from nursery and reception with activities to build confidence then use active music making and plenty of singing to take children through a progressive programme throughout their primary years. The lessons support schools to deliver the music curriculum and allow children to gain the following skills:

**Musicianship: Pulse and Rhythm** — read and perform rhythms and maintain timing.

**Musicianship: Pitch** — read and perform pitch notation, perform music with dynamics.

**Singing & Performing** — sing with confidence and perform rounds and partner songs.

**Instrumental Performance** — using keyboards, tuned percussion or melodic instruments to accompany and play complex melodies.

**Composition and Improvisation** — planning and composing melodies.



# ASPIRATIONS

For children to have increased aspirations



# EDUCATION

For schools to deliver more, and better, music education





# OUR SCHOOLS PROGRAMME



## School/pupil survey evaluation

Our annual survey of teachers (July 2024) found that, following our sessions:



100%

felt their pupils' musical knowledge was improved



81%

felt their pupils' wellbeing was improved



89%

felt their school's standard of music delivery was improved



92%

felt their pupils were more confident



60%

felt their pupils' aspirations were increased



81%

felt their staff were more confident in delivering music

## Independent Lesson Observations

Each year, we have our lessons evaluated by a team of independent observers. For 2024, our observers scored **66% of the elements they observed 'Outstanding' (66%)**, with a further **34% rated 'Good'**.



Comments from our observers included:

"A very good level of teaching was evident from the start...(the teacher) has a sense of assuredness and delivers with kindness, awareness and sensitivity."

"The years 2/3/4 groups are showing excellent levels of knowledge and understanding of solfa and rhythm as well as more extended musical ideas. They are very keen to participate... [the teacher] is being careful to cover all the developmental stages which is terrific as the strong core learning of this programme lasts right through their primary years and beyond."

"Since visiting last year, it is most encouraging to see the work continue to develop with precision and flair. These schools are very lucky to have this input as the quality is extremely high."

"The [Reception] pupils will be fantastic musicians when in Y6! They were well engaged and found it fun."

## Feedback from pupils echoed these findings

**90% of pupils surveyed were able to name something they'd learned** that they felt they were particularly good at (evidencing improved knowledge and confidence in their abilities), and **85% told us that music made them feel more positive** – with comments including:

"[Performing] makes me feel confident. Powerful. Gives you energy. Feel unique and special. We all have different roles to play"

"[Music] makes me feel happy because it's what I love the most"

"Music helps us with other things in our lives... We would love a longer music lesson."







## Case study

"Taylor\* (10) has been through some upheaval during her primary school years. She has moved schools several times, and her home life has not always felt secure. Taylor has always enjoyed music, but prior to her RSMF-supported lessons, she had never been able to learn consistently.

Taylor is eligible for Free School Meals due to her household income level, which gives her access to extra support in school – but the instability of her home life has meant she often suffers with low mood: "Most of the time I feel not that good... I struggle with my mental health." Taylor recently suffered a bereavement, and found that music really helped her process her emotions around this traumatic event: "Music helps, and art – being creative." Taylor's RSMF-supported lessons have given her some much-needed stability, and the ability to use her creativity week-in, week-out has given her the opportunity to shine. "[My favourite was] the ukulele – when we did strumming – we watched a video and she showed us how to do it in a fun way. I want to do more music!"

\*not his/her real name



## What's different about our music delivery?

RSMF's model is unique in the sector. Our experience of delivering this work shows us how crucial it is to be present over time, providing EVERY pupil in a school with consistent learning EVERY week. The results speak for themselves – by enabling schools to access inspiring, high-quality music lessons at an affordable price, we are able to bring music to a huge number of children every week.

We know that this consistency of delivery is most important for pupils with additional needs – but all pupils will find learning easier and get more benefit if they are taught with consistency and clarity: understanding what they have been taught, what will be coming next and how each relates to the other. We give our pupils the opportunity to excel, by providing clear and consistent learning, every week of every term.



# OUR EVENTS AND HOLIDAY CLUBS

*"It was the best  
day of my life!"*



**Make Music Day 2024 - 300 children gather to make music!**



**MAKE MUSIC  
DAY UK**





**Our Holiday Clubs give children a free fun day of music, food and friendship**



SCAN this QR code to watch our Make Music Day 2024 highlights

▶ @richardshephardmusicfounda7492





# MUSIC IS A KEY

Music has the power to change lives. Research shows us the immense impact that engaging with the arts can have – particularly for children from disadvantaged backgrounds.

Students from low-income families who take part in arts activities at school are **three times more likely to get a degree than their peers**<sup>1</sup>



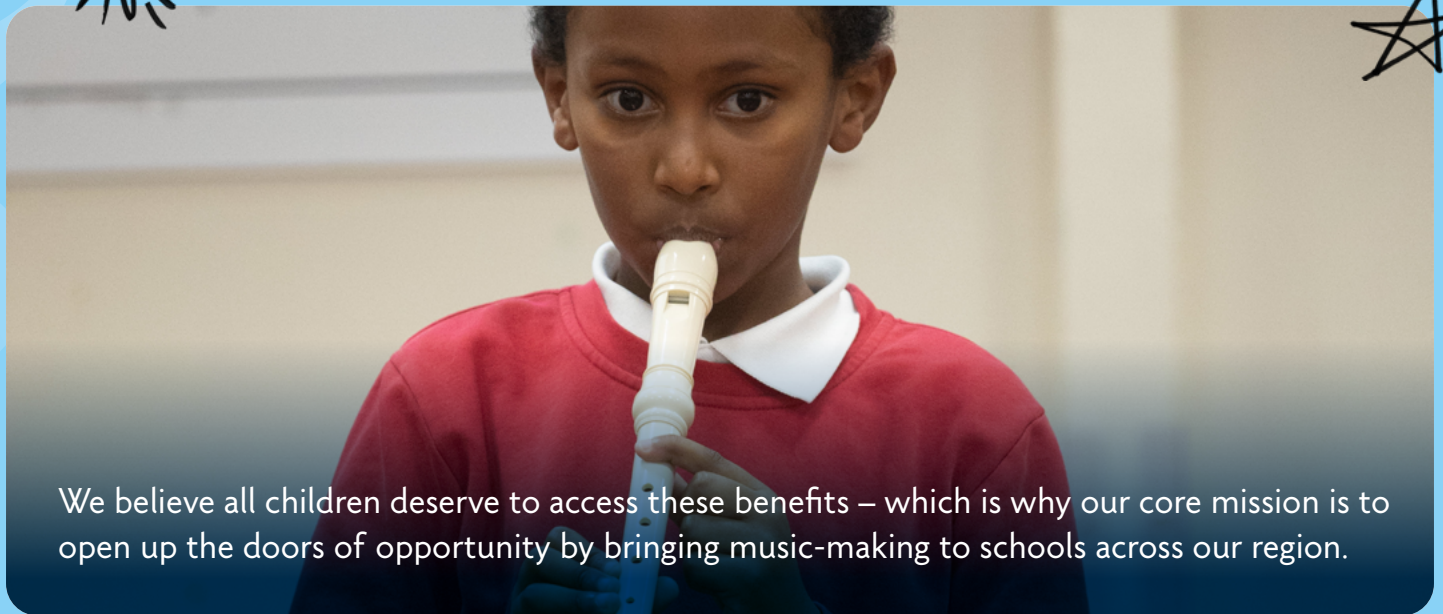
Children who experience musical training develop **higher aspirations, boosting motivation and attainment** – giving them an advantage across all school subjects<sup>2</sup>



Participation in arts activities also tends to correlate with **socioeconomic status**<sup>3</sup>, and lifelong engagement patterns strongly with engagement during childhood – meaning that ensuring all children have access to high-quality arts education can help to reduce inequalities in social and cultural capital<sup>4</sup>







We believe all children deserve to access these benefits – which is why our core mission is to open up the doors of opportunity by bringing music-making to schools across our region.

## WAYS TO SUPPORT US

In 2024–25, we expect the cost of our full programme to be in the region of £650,000. Around half of this will be raised through our Schools Programme – but the remainder must be raised through charitable donations from individuals, trusts & foundations, and corporate partners.

If you'd like to support our work, there are several ways you can help:

### Become a Friend of the Foundation

Friends of the Foundation benefit from regular newsletters keeping you updated about our work, key successes, and our events calendar. We also plan a few exclusive concerts and networking events each year to which Friends are invited.

To become a friend, we ask you to provide a regular monthly or annual donation to the charity. We leave you the flexibility to set the amount you want to give – the average monthly donation made by Friends of the Foundation is £26. Additionally, if you are a UK taxpayer, by saying yes to Gift Aid on your monthly donation, the Foundation can claim an extra 25p for every £1 you give at no additional cost to you. Visit [www.rsmf.org.uk/support](http://www.rsmf.org.uk/support) for more details.

### Make a one-off donation

Every penny we receive makes a difference. There are several ways you can make a one-off donation:

Online: Visit [donate.rsmf.org.uk/donate](https://donate.rsmf.org.uk/donate) to make an online donation of any amount of your choosing.

Bank transfer:

**Richard Shephard Music Foundation, Lloyds Bank, Sort code: 30–96–26, Account number: 72571268**

Cheque: Cheques can be sent by post to our office at 29 Marygate, York YO30 7DR – if you'd like to Gift Aid a donation by cheque, please do request a donation form (email [info@rsmf.org.uk](mailto:info@rsmf.org.uk) or phone **07845 878642**).

### Spread the word

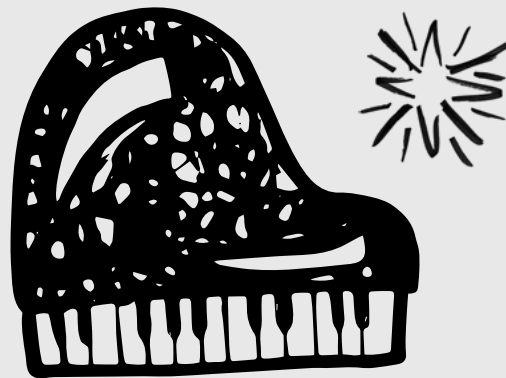
Raising the profile of the Richard Shephard Music Foundation is so valuable – if you'd like to see our sessions running in your local school, or know somebody who would love the work we do, please do let them know about us! You can direct potential supporters to an online copy of this Impact Report at:

[www.rsmf.org.uk/our-impact](http://www.rsmf.org.uk/our-impact)



- 1 Cultural Learning Alliance, ImagineNation: The value of cultural learning, 2017
- 2 Hallam, S., The Power of Music, 2015
- 3 Arts Council England, Every child: equality and diversity in arts and culture with, by and for children and young people, December 2016
- 4 McDowell, E., Research Digest: Lifelong Cultural Engagement. Version 1: January 2024. Leeds: Centre for Cultural Value.

# A HUGE THANK YOU



**The Foundation gratefully acknowledges the support and partnership of the following organisations and individuals.**

The Liz and Terry Bramall Foundation – The Estate of Dr Richard Shephard – The Holbeck Charitable Trust – The JS & EC Rymer Charitable Trust – GSM Group – The Seedkeep Foundation – The Whitwam Family Charitable Foundation – The Shears Foundation – Patricia and Donald Shepherd Charitable Trust – The Lord and Lady Benson Charitable Trust – The Ed de Nunzio Charitable Trust – Eastfield Cash for Causes – North Yorkshire County Council – The Purey Cust Trust – The Charles & Elsie Sykes Trust – The Sylvia and Colin Shepherd Charitable Trust – The Michael and Lotti Sturge Charitable Trust – The Robin and Henrietta Woods Charitable Trust – The Calmcott Trust – The George A Moore Foundation – The WL Pratt Charitable Trust – The Reed Foundation – Earl Fitzwilliam Charitable Trust – The Samuel Storey Family Trust – York Musical Society – The Persula Foundation – Four Acre Trust – Gay & Peter Hartley's Hillards Charitable Trust – Headland Consultancy – The Gillham Charitable Trust – Nab Wood Charitable Trust – The Drax Foundation

Sandy Anderson  
Reverend Bill and Celia Ankers  
Michael Ash  
Phillip Ashton  
David Atkinson  
Dame Janet Baker Shelley  
Richard Baldwin  
The Honourable Michael Benson MBE and family  
Fred Brown  
Ashley Burgess OBE  
Viv and Jeremy Cassel  
William Chapman  
Graham Child  
Rory Clayton  
John Cleary  
Fred Collin  
Sir Ron and Lady Barbara Cooke  
Wendy Cope  
Lord James Crathorne  
Lady Deirdre Curteis  
Stephen Darlington  
Lynne Dawson  
Mike and Sharon Dawson  
Janet Dobson  
Frances Dodd  
Lady Downe  
Professor David Drewry  
Mr and Mrs James Fenwick  
Alistair Fitter  
Sherril Furnell  
Stephen Galloway

Andrew and Sue Grace  
Cathy Grant  
Dr Alison Grey  
Richard Grosberg  
The Earl of Halifax  
Christopher Hall  
Dr Brian Hebblethwaite  
Professor Edward Higginbottom  
Terry Holmes  
Janet Hopton  
Nicholas Howard  
Sam Hucklebridge  
Mary Hughes  
Charles Hulme and Maggie Snowling  
Tiffany Hunt  
Michael Jackson  
David and Claire Kenworthy  
George Knowles  
Fiona Le Masurier  
Nicola LeFanu  
Chris Legard  
Michael Lindsell  
Bob Lowe  
Lindsay and Elise Mackinlay  
Ruth Elizabeth Mann  
Tim Marks  
Lord John Mexborough  
Graham Millar  
David Miller  
Harold and Caroline Mozley

Sue Nightingale  
Dorothy Nott  
Lady Mia and Sir Christopher O'Donnell  
Geoff Potter  
Mr and Mrs Roger Raimes  
David Rayner CBE  
Elizabeth Reid  
Anthony Robards OBE  
Doreen and John Robinson  
David Rymer  
Donis Schweizer  
Andrew and Margaret Scott  
Catherine Scott  
Jonathan Shephard  
Mark Shephard  
Piers Shepherd  
Judy and Jim Stephenson  
Michael Thomson  
Rosemary Toy  
Dr Deborah Trebilco  
Diane Walker  
John Warrack  
Sam Wiggs  
Catherine Williamson  
Rosemary Wilson  
David Winpenny  
Nicholas Wrigley  
Sarah York  
Edward Young

## Friends of the Foundation

Rosemary and Adrian Anderson  
Lady Gillian Barron  
Margaret and Robert Blowey  
Dr Peter and Bridget Burgess  
Heidi Carberry  
Rosemary Downey  
Andrew and Kate Green  
Rosemary Gutteridge  
Elizabeth Mattock  
Tony May  
Dawn and David Moores  
Dr Roger Pierce  
Ben Saer  
Jill Shepherd  
Rob Shepherd  
Alan Suggett  
Martin Thomson  
Helen Wood



## Trustees

Michael Benson MBE  
Sir Ron Cooke  
Lynne Dawson  
Edward Young  
Richard Grosberg  
David Pipe  
James Downey  
Andrea Hayes



Schools where we provide music lessons	Pupils taught
Easterside Academy, Middlesbrough	359
Pickering Community Junior School	214
St George's RC Primary School, Scarborough	112
Gillamoor CE Primary School, North Yorkshire	57
Slingsby County Primary School, North Yorkshire	93
St Joseph's RC Primary School, Pickering	90
Acomb Primary School, York	327
Abingdon Primary School, Middlesbrough	630
St Mary's Catholic Primary School, Malton	210
Middleham CoFE Aided School	43
Spennithorne CoFE Primary School	40
St Francis of Assisi CoFE Primary School, Stockton	450
Ainderby Steeple CoFE Primary School, North Yorkshire	104
Badger Hill Primary Academy, York	195
Hob Moor Community Primary Academy, York	311
Clifton Green Primary School, York	416
Rufforth Primary School, York	100
Breckon Hill Primary School, Middlesbrough	600
Croft CoFE Primary School, Darlington	110
Eppleby Forcett & Middleton Tyas CE Primary Schools	145
Heworth CoFE Primary School, York	142
Barwic Parade Community Primary School, Selby	254
Newham Bridge Primary School, Middlesbrough	331
Crayke Primary School	87
St Barnabas CoFE Primary School, York	86
Carr Junior School, York	300
Fairfield Primary School, Stockton	476
Overdale Community Primary School, Scarborough	300
<b>Total</b>	<b>6,470</b>



## Patrons

Sir Mark Elder  
Phillip Breen  
Kathryn Rudge  
Al Doyle



## Partner Supporters

We are pleased to work with:

- York Music Hub supported using public funding by Arts Council England
- The FEAST scheme in North Yorkshire - holiday clubs with government funding from the Holiday Activities and Food (HAF) programme.
- Royal Birmingham Conservatoire and the Weingarten Memorial Trust.

## In Memoriam

We are honoured to have received donations sent in memory of loved ones, including:

In loving memory of Dr Richard Shephard

*"Richard Shephard's passion and dedication to music making in York really was inspirational."*

*"I acted and sang in two of Richard's operettas as a schoolboy in Salisbury. These were very formative moments for me, and I am grateful to Richard for this amazing opportunity, his encouragement and kindness."*

In loving memory of Nick Nightingale

In loving memory of Kay Mills-Hicks

In loving memory of Sheila Winpenny

*"In memory of Sheila Winpenny, our lovely neighbour, friend and music teacher."*

*"In memory of Sheila Winpenny who passed on her love of music and skills to many."*

*"In memory of my dear friend Sheila Winpenny, an inspiration to many."*

In loving memory of Ruth Elizabeth Mann

*"I wanted to donate on behalf of my Godmother who was a primary school teacher all her life and brought a huge amount of joy to the children she taught through her music (piano, singing and guitar)."*

In loving memory of Gwendoline Thomson

*"My mother was a piano teacher in the Selby area for many many years - she died in 2023 leaving a husband of 60 years' marriage and a local legacy of children who were taught piano - the family commemorate her life of giving by making an annual donation to the Foundation in the knowledge that it will help support children in music something Mum did all her life." - Martin Thomson*

And we remember with respect and thanks any other supporters who have died in the recent year. And any who prefer not to be named in person.



RICHARD SHEPHARD

**MUSIC**

FOUNDATION

[www.rsmf.org.uk](http://www.rsmf.org.uk)