



**Founded 1910**

**HERNE BAY ROLLER HOCKEY AND SKATING CLUB**

Charitable Incorporated Organisation reg no: 1188102

# Annual Report 2021-2022



# **HERNE BAY ROLLER HOCKEY AND SKATING CLUB**

## **REPORT OF THE TRUSTEES for the Period Ended 31 July 2022**

The trustees of Herne Bay Roller Hockey & Skating Club present their annual report and accounts for the year ending July 31st 2022 and comply with the Charities Act 2011.

We are a Charitable Incorporated Organisation (CIO).

### **Introduction**

Founded in 1910 the Herne Bay Club is the world's oldest club still in existence. Herne Bay is considered as the birthplace of organised Rink Hockey. Throughout its history the club has been at the forefront of the sport in England. The growth of the sport in this country has been restricted due to the lack of suitable facilities. Despite the lack of facilities the club is now recognised as a dominant club across the junior age groups and the development of the sport for the future.

To enhance this, the club became a charity to enhance our aims and objectives.

Herne Bay RH&SC is a Charitable Incorporated Organisation. Herne Bay RH&SC became a Charity on 10th January 2020. The latest constitution in respect of this reporting year was issued February 2020

Our objectives are set to reflect our charitable aims and agreed by our Trustees and key-workers in the club. In setting our objectives and planning our activities the Trustees gave careful consideration to the Charity Commission's public/community benefit guidance.

- Communication with our members and keeping them up to date with plans for moving forward relating to the sport and club.
- Communication with the local community informing them of the clubs activities and future plans.
- Communication with the Regional Association and the National Executive relating to opening the sport after lockdown.
- Communication with Developers, local councillors and prospective stakeholders in our community/clubhouse project.

The club is run on an unpaid voluntary basis. Day to day matters are dealt with by an Executive Committee who report on a quarterly basis into the Board of Trustees. The Trustees have the ultimate authority at the club. Reporting into the Executive Committee and running their own teams according to club rules are Team Managers. Players, parents, grandparents, and guardians etc. then make up the bulk of the associate membership of the club. Anyone can become an associate member. Membership works on a subscription or donation basis.

For the future, the charity will look to widen its community and sports activities with projects and initiatives involving other stakeholders and partners for the benefit of local residents.

## Review of Activities

Post Pandemic we still strived to meet our aims. It was pleasing to see the majority of members returned to the club. There were low numbers in the younger age group, being unable to recruit whilst in lockdown. The community club operates in an area of multiple deprivation in Herne Bay, Kent and the objects of the charity are the promotion of community participation in healthy recreation for the public benefit by providing facilities for learning to skate and playing the sport of Roller Hockey and in so doing improving health.

Our season started with the objective of building the membership to that of pre- lockdown. Whilst some members had moved on, the majority returned and indeed some members came back to the sport from previous years.

During lockdown we were not able to recruit new younger members to the sport.

The club decided to provide an extra “Learn to Skate” session for members of the community.

The sessions started slowly but we soon reached our capacity. From the young people that attended the Skating sessions we were also able to recruit a significant number into Roller Hockey. We are always restricted by the facilities we have available to us at the sports centre.



## Competition

It took a few months before our governing body were able to organize National and Regional competition.

By the end of 2021 all our teams were actively involved in competitive leagues.

An international competition took place at Middlesbrough and 3 of our u17 players were selected to play for England.

The National League Finals were also held at Middlesbrough and several of our teams participated in various age groups. All the teams played well but were not at full strength due to availability and financial circumstances.

National Cup Finals were held locally and we were able to achieve runners up in 2 age groups and winning at u13 becoming National Champions.

Regional Finals were very successful for the club winning all the finals in every age group from u13s to seniors

## Fundraising

In July the club organised a charity event to support one of our players who had been diagnosed with bone cancer.

It was a fun day based around friendly roller hockey, mixing different ages together in each team. There was also many off rink activities and fun games. The day was enjoyed by all and we managed to raise £2857 for Cancer Research.



Due to congested match fixtures there was limited time for social activities. The club was able to organise a successful Wine and Wisdom evening

## End of season Presentation

Individual awards were given to members for their achievement over the season, voted by their peers groups.



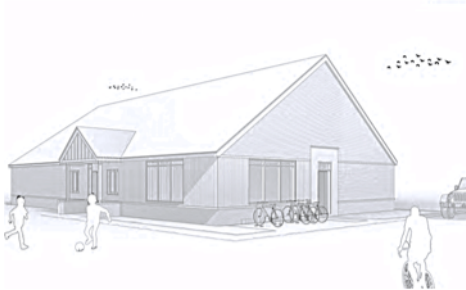
All members were presented with new club pin badges



## Proposed new facilities

Whilst we were made aware of the builder who will be developing the sports and community facilities there had been no further contact. Due to the effects of the covid pandemic the development had been put back by about 2 years.

It is anticipated that further discussion and consultation will resume and that there will need to be revisions made as a result of the changing social and economic climate.



## Structure, Governance and Management

As a governing body under the Charity Commission rules the trustees oversee the direction and governance of the club and are responsible for its financial management ensuring its reputation is upheld and that the charitable objectives of the club are carried out.

Whilst they delegate day-to-day sport and related operational matters to the club's key workers, the board retain overall legal responsibility and only delegate as far as the governing document or the relevant legislation allows. The law describes charity trustees as "the persons having the general control and management of the administration of a charity" (Charities Act 2011).

We were able to recruit one trustee during the year. The trustees are aware that it would be beneficial to the charity to recruit more trustees to the board.

It has been difficult to source suitable candidates who have the time to give to the charity and we will continue to look wider within the community.

## Risk Management

Club risk assessments are carried out annually and will be updated as and when incidents occur, during this reporting period there were no incidents, these risk assessments are for operating at our 'home' venue and for teams who travel to 'away' venues. We have the following procedures with documents in place, via our NGB and they can be found via the following link:

<https://www.englishrollerhockey.org/Rules-&-Policies>

<https://hernebayrollerhockey.wixsite.com/club/english-herne-bay-documents>

The club also operates under the rules and regulation of our 'home' venue the Active Life/Focus sports facility.

## Statement of Financial Position

The club's financial year ended on 31st July 2022. The club showed an overall surplus of £8,415.

Given the financial position of the club and the national situation the decision was taken that the annual subscriptions would remain at the same level as the 2020-21 season.

Initially funds from our deposit account were used to cover the day-to-day expenses. Due to increased membership through the year there was a small profit on our current account. We were successful in a number of funding applications allowing our deposit account to increase, giving us more options to increase our activities to the wider community with suitable financial back up.

---

### REFERENCE AND ADMINISTRATIVE DETAILS Trustees

Michael Harris  
Emma Hudson  
Olha Hanzlik  
An Other (Name withheld)

Principal Address

61 Central Avenue Herne Bay Kent CT6 8RU

Approved by the board of trustees on

Mr M Harris (Chairman) – Trustee





CHARITY COMMISSION  
FOR ENGLAND AND WALES

Herne Bay Roller Hockey and Skating Club

1188102

## Receipts and payments accounts

CC16a

For the period  
from

Period start date  
01/08/21

To

Period end date  
31/07/22

### Section A Receipts and payments

	Unrestricted funds to the nearest £	Restricted funds to the nearest £	Endowment funds to the nearest £	Total funds to the nearest £	Last year to the nearest £
<b>A1 Receipts</b>					
Skaters	560	-	-	560	-
Members subs	17,201	-	-	17,201	-
resale	2,439	-	-	2,439	-
Funding	4,165	-	-	4,165	-
stationary	-	-	-	-	-
	-	-	-	-	-
	-	-	-	-	-
<b>Sub total (Gross income for AR)</b>	<b>24,365</b>	<b>-</b>	<b>-</b>	<b>24,365</b>	<b>-</b>
<b>A2 Asset and investment sales, (see table).</b>					
resale kit equipment	-	-	-	-	-
	-	-	-	-	-
<b>Sub total</b>	<b>-</b>	<b>-</b>	<b>-</b>	<b>-</b>	<b>-</b>
<b>Total receipts</b>	<b>24,365</b>	<b>-</b>	<b>-</b>	<b>24,365</b>	<b>-</b>
<b>A3 Payments</b>					
Rink Venue Hire	17,989	-	-	17,989	-
NRHA registration fees	841	-	-	841	-
other hire	25	-	-	25	-
stationary	689	-	-	689	-
good resale	1,082	-	-	1,082	-
funding	1,073	-	-	1,073	-
	-	-	-	-	-
	-	-	-	-	-
<b>Sub total</b>	<b>21,699</b>	<b>-</b>	<b>-</b>	<b>21,699</b>	<b>-</b>
<b>A4 Asset and investment purchases, (see table)</b>					
	-	-	-	-	-
	-	-	-	-	-
<b>Sub total</b>	<b>-</b>	<b>-</b>	<b>-</b>	<b>-</b>	<b>-</b>
<b>Total payments</b>	<b>21,699</b>	<b>-</b>	<b>-</b>	<b>21,699</b>	<b>-</b>
<b>Net of receipts/(payments)</b>	<b>2,666</b>	<b>-</b>	<b>-</b>	<b>2,666</b>	<b>-</b>
<b>A5 Transfers between funds</b>					
<b>A6 Cash funds last year end</b>	<b>5,618</b>	<b>-</b>	<b>-</b>	<b>5,618</b>	<b>-</b>
<b>Cash funds this year end</b>	<b>8,284</b>	<b>-</b>	<b>-</b>	<b>8,544</b>	<b>-</b>

### Section B Statement of assets and liabilities at the end of the period

Categories	Details	Unrestricted funds to nearest £	Restricted funds to nearest £	Endowment funds to nearest £
<b>B1 Cash funds</b>				
	account1	2,323	-	-
	account 2	6,092	-	-
	Petty cash	129	-	-
	<b>Total cash funds</b>	<b>8,544</b>	<b>-</b>	<b>-</b>
	(agree balances with receipts and payments account(s))	Agreement Error	OK	OK
		Unrestricted funds to nearest £	Restricted funds to nearest £	Endowment funds to nearest £
				30/05/23

**B2 Other monetary assets**

	-	-	-
	-	-	-
	-	-	-
	-	-	-
	-	-	-
	-	-	-

**B3 Investment assets**

Details	Fund to which asset belongs	Cost (optional)	Current value (optional)
		-	-
		-	-
		-	-
		-	-
		-	-

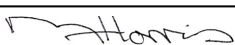
**B4 Assets retained for the charity's own use**

Details	Fund to which asset belongs	Cost (optional)	Current value (optional)
		-	-
		-	-
		-	-
		-	-
		-	-
		-	-
		-	-
		-	-
		-	-

**B5 Liabilities**

Details	Fund to which liability relates	Amount due (optional)	When due (optional)
		-	
		-	
		-	
		-	
		-	

Signed by one or two trustees on behalf of all the trustees

Signature	Print Name	Date of approval
	Michael Harris	29/05/23