

Turning  
Corners

BEYOND  
the  
BULLSEYE

ANNUAL ACCOUNTS 2024



# CONTENTS

Message of the chair .....	3
Mission & vision .....	4
About.....	5
Aims & values .....	6
Projects .....	7-11
Impact .....	12-13
Theory of change .....	14
Trustees' report .....	15
Independent examiner's report.....	16
Statement of financial activities .....	17
Balance sheet.....	18
Notes to the financial statements .....	19-22



# MESSAGE OF THE CHAIR

What stands out about this year is the sheer mix of struggle and strength. Referrals have risen faster than ever, and behind every new name is someone carrying the weight of mental health struggles, poverty, or loneliness. But this rise also tells another story—people are becoming more self-aware, more willing to say they deserve better, and the stigma around mental health is steadily crumbling.

At Turning Corners we often speak about the bullseye. For us, it isn't about perfection but about progress. Every ring on the target is part of the journey: finding a safe space, sharing a first story, reaching out for support, or daring to hope again. Each step forward is its own victory, and that's what we celebrate.

This year we also completed our **theory of change** and a new **five-year strategy**. It's ambitious yet realistic, rooted in resilience, and designed to keep us focused on what matters most—standing alongside people for the long haul, not just for the crisis moment.

I want to thank the funders and partners who make this work possible. From UK Government support and GLA funding for food provision, to the National Lottery Fund, Lloyds Bank Foundation, Cash for Kids, Arnold Clark, David Dutton Fund, London Community Foundation (in partnership with Sainsbury's), and Hackney Giving—you are our backbone. To the new friends who joined us this year—Florence Foundation, Keith Rae Charitable Trust, Walker Trust, Children in Need, Bentley Motors Community Fund, Project Spark, Compass Wellbeing, Beacon Lodge, Delamere Dairy, and Happy Days—your impact is already being felt. And to Arbib Lucas, BBC Essential Needs, and Mary Mcurther, thank you for the individual grants that reached people directly, in the moments they needed it most.

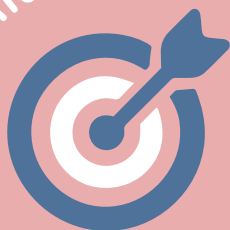
Finally, my deepest thanks to the participants who let us walk alongside you. Your honesty and bravery remind us daily why Turning Corners exists. You are not just at the centre of our work—you are the bullseye we're all aiming for.

*Shimon Wider*



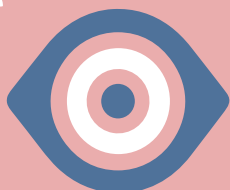


OUR MISSION



Turning Corners builds trust and helps individuals and families navigate the long, confusing, and often painful path through mental health and crisis systems. We are the shoulder to lean on—making sure people know where to go, how to get there, and how to hold on until recovery. We stand alongside them when support feels out of reach

OUR VISION



For individuals and families to move through mental health challenges with clarity, dignity, and the right support—no matter how complex their starting point.





ABOUT

Turning Corners supports young adults and families affected by crisis, or at intersections of mental illness, poverty, and ACE. Our work is divided into two divisions: Family Nests and Solo fly. Each family or individual we support is paired with an advocate—who works alongside them, not for them, to identify and address their unique needs. We provide a space for human beings to be human beings. Mental health issues do not mean that we are defective; It means we are human. Relationship challenges do not make us into personality disorders, it means we have all sorts of people in our lives. A personality disorder doesn't mean we are bad, just hurting.



### *Limbo Link*

Providing vital support and a holding place during the waiting list stage.

### *Challenging Barriers*

Bridging barriers to mainstream mental health through cultural training, and case-management.

### *Well-rounded treatment*

Mental health counselling, peer support and selfcompassion and medication adherence where needed.

### *Not Band-Aid*

Non-clinical support services that relieve stress at home and empower individuals/families with agency to manage. This could be applying for a Breathing Space debt freeze or PIP e.t.c. It offer more than just reprieve; it provide a space and framework for recovery.

**Our role is to build trust and facilitate access to standard Mental Health and crisis routes and be the shoulder individuals can lean on during this process ensuring that individuals know where to go for help, how to get there, and how to cope until recovery because the process can be long, confusing and painful.**

## VALUES

### *Trust before treatment*

We believe change begins with relationships. Before any programme or intervention, we build trust—the foundation that makes healing possible.

### *Cultural humility*

We honour the lived realities of every person we meet. No one should have to leave their identity at the door to access support.

### *Growth with grounding*

We only grow where we can sustain care and integrity. Scaling up means nothing if it comes at the cost of genuine human connection.

### *Peer power*

Lived experience isn't an add-on—it's our compass. Those who have walked the path shape the relevance and innovation of what we do.

### *Environmental care*

Through our Green versus Blues campaign, we connect wellbeing with nature. We encourage balance with technology and responsibility for the world we share



# PROJECTS

The core of our service is ensuring every individual has a single point of contact who takes the time to understand them deeply, advocates for their needs, and provides consistent support. We complement this support with practical resources like food provision, peer support, skills workshops, and help with PIP paperwork, allowing them to concentrate on their recovery while managing everyday tasks

**We offer a range of projects:**

*Heart Behind the Hustle*

*Vitamin Sea*

*ABC*





“I offer evening appointments to Turning Corners Clients because I know my time is well spent. Clients want to help themselves and get support to follow through treatment plans. “

*Psychiatrist Y. Inspector*

## HEART BEHIND THE HURT

In the Heart Behind Hurt Program, we understand that sometimes, the way we act isn't a true reflection of who we are. It's often the pain we carry inside that speaks the loudest. When we feel overwhelmed, stressed, or hurt, it can be hard to express ourself in a healthy way.

Through counseling and therapy groups, we dive deep into the underlying causes of your behavior. We explore the emotions and experiences that trigger us, and take care to give it the space and respect it deserves and then let it float past us and learn new skills to replace unhealthy self-soothing behaviors.

We use evidence-based therapeutic modalities tailored to each client's needs, with peer support as a key component. Additionally, our specialized CRM system sends reminders for treatment adherence and medication, addressing the common issue of inconsistency that often leads to relapse in serious mental health conditions. This approach helps individuals stay on track while preserving their sense of control.



### High Scores

This year 19 individuals with complex mental health diagnosis including Schizophrenia, BiPolar disorder and other serious mental illness experienced 40% less relapse, less hospitalisations and 58 % improved quality of relationships and community integration.





“Regular water fun and breathing exercises really helped me break free from the knots of stress and anxiety. In those moments, I found relief where therapy couldn’t reach.”

*Murrice Kahan*

16-year-old Vitamin Sea participant

## VITAMIN SEA - WAVES OF WELLNESS

There’s nothing quite like the revitalizing power of Vitamin Sea. Our program offered a unique blend of energy and tranquility, helping participants trade stress for the soothing rhythm of waves and the warmth of sand beneath their feet.

Vitamin Sea was designed to support young adults aged 16-30 who have been facing the challenges of treatment-resistant depression. Through our series of 32 sessions, we reached 62 participants, offering them a refreshing escape and a new perspective on well-being. The program included beach trips filled with relaxation and fun, from mindfulness workshops to beachside picnics, providing a much-needed break from daily stress.

But our approach wasn’t limited to just beach days. We extended the program to include forest exploration, scavenger hunts, and peaceful riverside strolls, offering participants a variety of environments to discover new ways to find calm and resilience.

We also ran a special seasonal program for young carers during the winter and spring holidays and half-term breaks, giving them a chance to recharge and experience the healing effects of nature and mindful activities.



### High Scores

**32 Vitamin Sea Trips**

**95% of participants reported that the program helped them regulate their mood and find a sense of calm.**



"I can't believe I received this award. I've never been recognized like this before, and it means so much to me. I'm incredibly thankful to have met you and everyone else here, and I'm so grateful to be part of the Steering Committee. Just as others have doubted me, I've often doubted myself too, so this recognition is huge for me. I can't stop feeling so happy right now."

*Rachel L*

ABC - ALL BABIES COUNT

We understand the challenges faced by mothers with postpartum mental illness. We recognize that medication may pose risks to the baby's health, creating additional stress and worry for these mothers. That's why we provide free formula to ensure that mothers can focus on their mental health without worrying about the financial burden of purchasing formula. Our goal is to offer support and alleviate the concerns of mothers during this challenging time, ensuring that both mother and baby receive the care they need.

Parental Power supports parents grappling with mental health and addiction challenges to create joyful family moments. We help them understand the impact of their actions on their children, assist in making gradual improvements to family dynamics, and connect them with both statutory and voluntary services for additional support.



## High Scores

- 94 tins formula distributed
- 19 specialist milk formula for lactose intolerant infants
- 154 baby food packages and vouchers allocated
- 5 Parenting Meetings



"The rabbit doesn't judge, only loves."

*Esther M*



## CUDDLER COMPANIONS

This year we started Cuddle Companions after parents asked for more ways to support children carrying deep and tender trauma. We found that time with animals can create a kind of calm that words often can't. Families joined us for dog therapy sessions, quiet farm visits, and plenty of trips to Lee Valley Riding Centre, where children discovered the simple comfort of brushing a pony or feeding a horse. These moments brought smiles, eased tension, and gave families shared memories of joy and safety—small but powerful steps in rebuilding trust and confidence. A huge thank-you to the Florence Foundation for being the pioneer funder who made this new service possible.

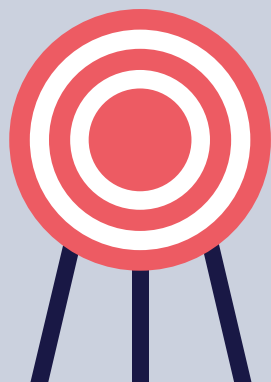
### *Social Model of Support*

Alongside our therapeutic work, we are strengthening the social model of support—helping people navigate the everyday barriers that often make mental health struggles worse. This includes making clients aware that their condition may entitle them to PIP and supporting them through the application process. We also guide people in applying for a Breathing Space debt freeze, and help with other stressful paperwork—like opening a bank account when you don't have a secure address. These practical steps might seem small, but they restore dignity, reduce stress, and give people the stability they need to focus on recovery.





# CASE STUDY



“

I had been eagerly awaiting this time since I was five years old, consumed by my fascination with dollies and prams. I was trying to be a good parent but felt so burdened by my tiny 2-kilo newborn. I had to watch her 24/7. I would not even take bathroom breaks because I didn't trust my husband or anyone. I had grotesque images of things happening to her. I couldn't sleep, I couldn't eat, and I was so scared of the anxiety itself. The more I pushed it away, the stronger it pounced on me with a spring coil effect. I quit taking care of myself. I didn't feel worthy – in my mind, taking care of myself meant taking time away from the baby. We couldn't afford household help. Going nights without sleep, I had my first manic episode. I was so scared that the doctors would take away my baby that I couldn't be open with them and flushed my pills.

My health visitor referred to Turning Corners, I was explained the treatment process so well and helped me understand how social services can help and are not out to get me. My advocate also helped us get Baby formula vouchers cause i couldn't breastfeed with my meds. I liked being included in the monitoring process. It gave me encouragement a space to say what i think The Outcome Star validated my progress in areas that are often hard to articulate, boosting my confidence and my psychologist was able to record my progress using BPRS and GAD-7. This was meaningful to me as I could share my progress with my husband to give him confidence that our family will be ok and on bad days, I could focus on overall improvement and not get stuck.”

”

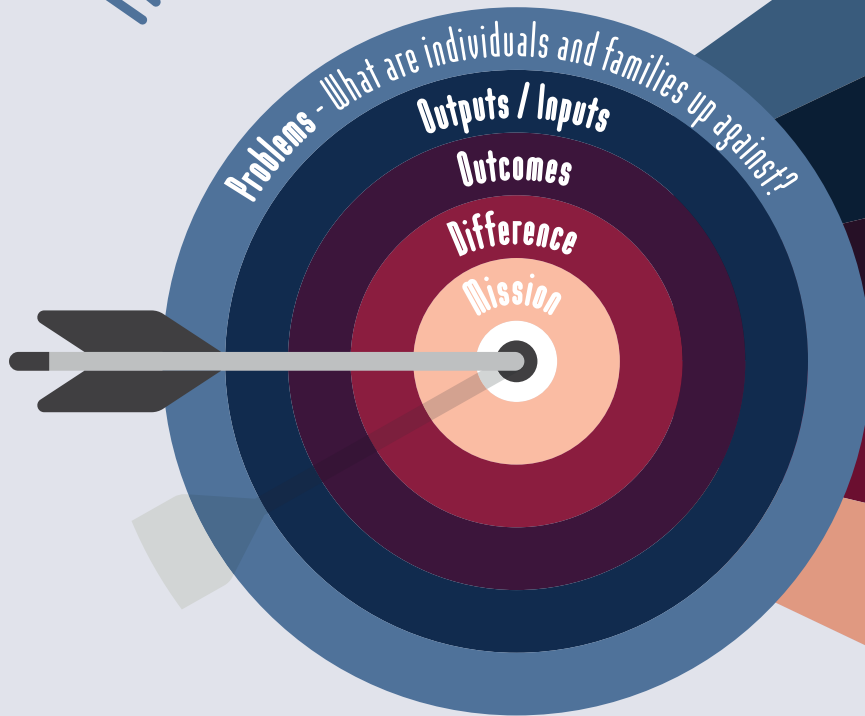






**Bullseye 23**

# THEORY OF CHANGE



- Long CAMHS waitlists or exclusion from services
- Cycles of addiction, untreated mental illness, and generational trauma
- Family breakdown, housing stress, and poverty

- Experience in navigating complexity: dual diagnoses, safeguarding, addiction, parenting under pressure
- Cultural humility and deep understanding of hidden communities
- Clinical supervision and emotional support for staff/volunteers supporting these families
- Projects: ABC, Heart behind the hurt, Vitamin Sea, Braething Spoce, limbo link paperwork, Hush the Silence

- Families show reduced crisis episodes (e.g., fewer hospitalisations, social service escalations)
- Increased service access (e.g. CAMHS, GP registration, PIP, housing legal support)
- Fewer ACEs passed on to the next generation)

- Children grow up in safer homes, with emotional tools, trust in adults, and pride in their identity
- Families no longer live in survival mode
- Mental illness is no longer hidden or silenced—it's met with care, not shame
- Community systems respond earlier and more humanely to families in crisis

- Turning Corners builds trust and helps individuals and families navigate the long, confusing, and often painful path through mental health
- and crisis systems. We're the shoulder people can lean on—ensuring they know where to go, how to get there, and how to hold on until recovery.

# TRUSTEES' REPORT FOR THE YEAR ENDED 31 DECEMBER 2024

The trustees present their annual report and financial statements for the year ended 31 December 2024

The financial statements have been prepared in accordance with the accounting policies set out in note 1 to the financial statements and comply with the charity's governing document, the Charities Act 2011 and "Accounting and Reporting by Charities: Statement of Recommended Practice applicable to charities preparing their accounts in accordance with the Financial Reporting Standard applicable in the UK and Republic of Ireland (FRS 102)" (effective 1 January 2019).

## Objectives and Activities

Turning Corners builds trust and helps individuals and families navigate the long, confusing, and often painful path through mental health and crisis systems. We're the shoulder people can lean on—ensuring they know where to go, how to get there, and how to hold on until recovery.

## Public Benefit

The Trustees have taken due heed of their obligations relating to Public Benefit Duty affecting charities, as well as to their obligations under the Equalities Act 2010. The Trustees are satisfied that they meet their obligations.

## Achievements and performance

The charity is dependent on income from voluntary donations and grants. Total incoming resources during the year were £179,807 (2023: £161,387.) Charitable expenditure amounted to £162,336. (2023: £159,739.)

## Financial Review

## Reserves Policy

The charity's policy is to maintain reserves equivalent to at least 3 months of core running costs. This level of reserves is intended to provide financial stability, ensuring that the charity can continue its essential operations in the event of unexpected funding shortfalls or unforeseen expenses. This level of reserves has been maintained throughout the year. The Reserves Policy is reviewed annually to ensure it remains appropriate for the charity's needs and circumstances

## Structure, governance and management

The charity is a Charitable Incorporated Organisation and is controlled by its governing document. It was registered as a charity on 16 January 2020.

The trustees who served during the year and up to the date of signature of the financial statements were:

Shimon Wider- Chair  
Mayer Schrieber  
Shie Horowitz  
Isaac Hochberg

The day to day affairs of the Charity are administered by the Board of Trustees. It is not currently the intention of the Trustees of the Charity to appoint new trustees. Should the situation change in the future, the Trustees will apply suitable recruitment and training procedures. None of the trustees has any beneficial interest in the charity.

The trustee report was approved on 1 July 2025 by the trustees and is signed on its behalf by:



Shimon Wider- Chair

# INDEPENDENT EXAMINER'S REPORT TO THE TRUSTEES OF TURNING CORNERS

I report to the trustees on my examination of the financial statements of Turning Corners. (the charity) for the year ended 31 December 2024.

## Responsibilities and basis of report

As the trustees of the charity you are responsible for the preparation of the financial statements in accordance with the requirements of the Charities Act 2011 (the 2011 Act). I report in respect of my examination of the charity's financial statements carried out under section 145 of the 2011 Act. In carrying out my examination I have followed all the applicable Directions given by the Charity Commission under section 145(5)(b) of the 2011 Act.

I have completed my examination. I confirm that no matters have come to my attention in connection with the examination giving me cause to believe that in any material respect:

1) accounting records were not kept in respect of the charity as required by section 130 of the 2011 Act; or 2) the financial statements do not accord with those records; or 3) the financial statements do not comply with the applicable requirements concerning the form and content of accounts set out in the Charities (Accounts and Reports) Regulations 2008 other than any requirement that the accounts give a true and fair view which is not a matter considered as part of an independent examination.

I have no concerns and have come across no other matters in connection with the examination to which attention should be drawn in this report in order to enable a proper understanding of the financial statements to be reached.

**C.B. WEBERMAN**

C Weberman  
Weberman Ltd  
44 Fairholt Road  
London N16 5HW  
Dated: 31 August 2025

Dated: 31 August 2025



## STATEMENT OF FINANCIAL ACTIVITIES FOR THE YEAR ENDED 31 DECEMBER 2024

	Notes:	2024 Restricted £	2024 Unrestricted £	2024 Total £	2023 Total £
<b>Income and endowments from</b>					
Donations and legacies	3		33,878	33,878	15,340
Grants		134,429	11,500	145,929	146,047
		<u>134,429</u>	<u>45,378</u>	<u>179,807</u>	<u>161,387</u>
<b>Expenditure on charitable activities</b>					
Charitable activities	4	<u>(134,429)</u>	<u>(27,907)</u>	<u>(162,336)</u>	<u>(159,739)</u>
<b>Net Income / (Expenditure)</b>		<u>0</u>	<u>17,471</u>	<u>17,471</u>	<u>1,648</u>
<b>Reconciliation of funds</b>					
Total funds brought forward			37,908	37,908	36,260
Total funds carried forward		<u>0</u>	<u>55,379</u>	<u>55,379</u>	<u>37,908</u>

## STATEMENT OF FINANCIAL POSITION AS AT 31 DECEMBER 2024

	Notes	2024 UNRESTRICTED	2024 RESTRICTED	2024 TOTAL	2023 TOTAL
		£	£	£	£
<b>Current Assets</b>					10,375
Prepayments		56,079		56,079	27,533
Cash at bank		<u>56,079</u>	<u></u>	<u>56,079</u>	<u>37,908</u>
<b>Current Liabilities</b>					
Accruals	5	(700)		(700)	0
<b>Net Current Assets</b>		<u>55,379</u>	<u></u>	<u>55,379</u>	<u>37,908</u>
<b>Net Assets</b>		<u>55,379</u>	<u></u>	<u>55,379</u>	<u>37,908</u>
<b>Fund Analysis:</b>					
Funds brought forward		37,908		37,908	36,260
Net incoming resources		<u>17,471</u>		<u>17,471</u>	<u>1,648</u>
Funds carried forward		<u>55,379</u>	<u></u>	<u>55,379</u>	<u>37,908</u>

The financial statements were approved by the trustees on 01 July 2025.

Shimon Wider- Chair

# NOTES TO THE FINANCIAL STATEMENTS FOR THE YEAR ENDED 31 DECEMBER 2024

## 1. Accounting policies

### Charity information

The charity is a Charitable Incorporated Organisation.

### 1.1 Accounting convention

The financial statements have been prepared in accordance with the charity's governing document, the Charities Act 2011, FRS 102 "The Financial Reporting Standard applicable in the UK and Republic of Ireland" ("FRS 102") and the Charities SORP "Accounting and Reporting by Charities: Statement of Recommended Practice applicable to charities preparing their accounts in accordance with the Financial Reporting Standard applicable in the UK and Republic of Ireland (FRS 102)" (effective 1 January 2019). The charity is a Public Benefit Entity as defined by FRS 102. The charity has taken advantage of the provisions in the SORP for charities not to prepare a Statement of Cash Flows.

The financial statements have departed from the Charities (Accounts and Reports) Regulations 2008 only to the extent required to provide a true and fair view. This departure has involved following the Statement of Recommended Practice for charities applying FRS 102 rather than the version of the Statement of Recommended Practice which is referred to in the Regulations but which has since been withdrawn.

The financial statements are prepared in sterling, which is the functional currency of the charity. Monetary amounts in these financial statements are rounded to the nearest £.

The financial statements have been prepared under the historical cost convention, modified to include the revaluation of freehold properties and to include investment properties and certain financial instruments at fair value. The principal accounting policies adopted are set out below.

### 1.2 Going concern

At the time of approving the financial statements, the trustees have a reasonable expectation that the charity has adequate resources to continue in operational existence for the foreseeable future. Thus the trustees continue to adopt the going concern basis of accounting in preparing the financial statements.

### 1.3 Charitable Funds

Unrestricted funds are available for use at the discretion of the trustees in furtherance of their charitable objectives. Restricted funds are subject to specific conditions by donors as to how they may be used. The purposes and uses of the restricted funds are set out in the notes to the financial statements. Endowment funds are subject to specific conditions by donors that the capital must be maintained by the charity.

### 1.4 Income

Income is recognised when the charity is legally entitled to it after any performance conditions have been met, the amounts can be measured reliably, and it is probable that income will be received. Cash donations are recognised on receipt. Other donations are recognised once the charity has been notified of the donation, unless performance conditions require deferral of the amount. Income tax recoverable in relation to donations received under Gift Aid or deeds of covenant is recognised at the time of the donation. Legacies are recognised on receipt or otherwise if the charity has been notified of an impending distribution, the amount is known, and receipt is expected. If the amount is not known, the legacy is treated as a contingent asset.

### 1.5 Expenditure

Expenditure is recognised once there is a legal or constructive obligation to transfer economic benefit to a third party, it is probable that a transfer of economic benefits will be required in settlement, and the amount of the obligation can be measured reliably. Expenditure is classified by activity. The costs of each activity are made up of the total of direct costs and shared costs, including support costs involved in undertaking each activity. Direct costs attributable to a single activity are allocated directly to that activity. Shared costs which contribute to more than one activity and support costs which are not attributable to a single activity are apportioned between those activities on a basis consistent with the use of resources. Central staff costs are allocated on the basis of time spent, and depreciation charges are allocated on the portion of the asset's use.

# NOTES TO THE FINANCIAL STATEMENTS FOR THE YEAR ENDED 31 DECEMBER 2024

## 1.6 Tangible fixed assets

Tangible fixed assets are initially measured at cost and subsequently measured at cost or valuation, net of depreciation and any impairment losses. Depreciation is recognised so as to write off the cost or valuation of assets less their residual values over their useful lives on the following bases:

Plant and equipment - 40% RBM  
Fixtures and fittings - 20% RBM

The gain or loss arising on the disposal of an asset is determined as the difference between the sale proceeds and the carrying value of the asset, and is recognised in the statement of financial activities.

### Investment property

Investment property, which is property held to earn rentals and/or for capital appreciation, is initially recognised at cost, which includes the purchase cost and any directly attributable expenditure. Subsequently it is measured at fair value at the reporting end date. The surplus or deficit on revaluation is recognised in profit or loss.

### Impairment of fixed assets

At each reporting end date, the charity reviews the carrying amounts of its tangible assets to determine whether there is any indication that those assets have suffered an impairment loss. If any such indication exists, the recoverable amount of the asset is estimated in order to determine the extent of the impairment loss (if any).

### Cash and equivalents

Cash and cash equivalents include cash in hand, deposits held at call with banks, other short-term liquid investments with original maturities of three months or less, and bank overdrafts. Bank overdrafts are shown within borrowings in current liabilities.

### Basic financial assets

Basic financial assets, which include debtors and cash and bank balances, are initially measured at transaction price including transaction costs and are subsequently carried at amortised cost using the effective interest method unless the arrangement constitutes a financing transaction, where the transaction is measured at the present value of the future receipts discounted at a market rate of interest. Financial assets classified as receivable within one year are not amortised.

### Basic financial liabilities

Basic financial liabilities, including creditors and bank loans are initially recognised at

transaction price unless the arrangement constitutes a financing transaction, where the debt instrument is measured at the present value of the future payments discounted at a market rate of interest. Financial liabilities classified as payable within one year are not amortised. Debt instruments are subsequently carried at amortised cost, using the effective interest rate method. Trade creditors are obligations to pay for goods or services that have been acquired in the ordinary course of operations from suppliers. Amounts payable are classified as current liabilities if payment is due within one year or less. If not, they are presented as non-current liabilities. Trade creditors are recognised initially at transaction price and subsequently measured at amortised cost using the effective interest method.

Financial liabilities are derecognised when the charity's contractual obligations expire, are discharged or are cancelled.

### Employee Benefits

The cost of any unused holiday entitlement is recognised in the period in which the employee's services are received. Termination benefits are recognised immediately as an expense when the charity is demonstrably committed to terminate the employment of an employee or to provide termination benefits.

## 2 Critical accounting estimates and judgements

In the application of the charity's accounting policies, the trustees are required to make judgements, estimates and assumptions about the carrying amount of assets and liabilities that are not readily apparent from other sources. The estimates and associated assumptions are based on historical experience and other factors that are considered to be relevant. Actual results may differ from these estimates. The estimates and underlying assumptions are reviewed on an ongoing basis. Revisions to accounting estimates are recognised in the period in which the estimate is revised where the revision affects only that period, or in the period of the revision and future periods where the revision affects both current and future periods. Judgements made by the directors in the application of these accounting policies that have significant effect on the financial statements and estimates with a significant risk of material adjustment in the next year are as follows.

### Property valuation

The valuation of the charity's investment property is subject to a degree of uncertainty, as the value depends on various factors including the nature of the property, its location and expected future net rental values, market yields and comparable market transactions, and is made on the basis of assumptions which may not prove to be accurate



# NOTES TO THE FINANCIAL STATEMENTS FOR THE YEAR ENDED 31 DECEMBER 2024

## 3 Donations and legacies

	2024 RF £	2024 UF £	2024 Total £	2023 RF £	2023 UF £	2023 Total £
Donation		33,528	33,528		15,340	15,340
Grant	134,429	11,500	145,929	85,797	60,250	146,047
Legacy		350	350			0
	<u>134,429</u>	<u>45,378</u>	<u>179,807</u>	<u>85,797</u>	<u>75,590</u>	<u>161,387</u>

## 4 Charitable Activities

	2024 RF £	2024 UF £	2024 Total £	2023 Total £
<b>Distributions</b>				
Distributions to UK charities		5,000	5,000	160
Distributions to individuals	<u>350</u>	<u>1,400</u>	<u>1,750</u>	
	<b>350</b>	<b>6,400</b>	<b>6,750</b>	<b>160</b>

### Charitable projects

counselling space refurb				2,669
essentials	1,963	187	2,150	4,074
food	60,049		60,049	43,801
therapy and supervision	69,977	10,375	80,352	81,484
training		380	380	795
helpline				1,248
projects	500	2,805	3,305	5,749
workshops				4,929
respite				1,700
accessibility	1,590		1,590	4,666
venue hire				450
medical support		500	500	
	<u>134,079</u>	<u>14,247</u>	<u>148,326</u>	<u>148,896</u>
Direct charitable activities	<u>134,429</u>	<u>20,647</u>	<u>155,076</u>	<u>149,056</u>

## NOTES TO THE FINANCIAL STATEMENTS FOR THE YEAR ENDED 31 DECEMBER 2024

	2024 RF £	2024 UF £	2024 Total £	2023 RF £	2023 UF £	2023 Total £
<b>Support costs</b>						
professional fees			1,400	1,400		1,606
advertising						228
misc			338	338		359
gifts						121
insurance			420	420		371
IT			946	946		580
premises running costs			4,156	4,156		4,750
workshops			<u>7,260</u>	<u>7,260</u>		<u>8,015</u>
respite						
Total charitable activities	<u>134,429</u>		<u>27,907</u>	<u>162,336</u>		<u>157,071</u>

RF - Restricted funds

UF - Unrestricted Funds

### 5 Trustees

None of the trustees (or persons connected with them) received any remuneration or benefits during the year.

### 6 Employees

The average number of employees was nil (2023: nil). Accordingly, no employee received remuneration exceeding £60,000 in the year. (2023: none.)

### 7 Taxation

The charity is exempt from tax on income and gains falling within section 505 of the Taxes Act 1988 or section 252 of the Taxation of Chargeable Gains Act 1992 to the extent that these are applied to its charitable objects.

### 8 Related party transactions

There were no disclosable related party transactions during the year (2023 - none.)



## Trustees

Shimon Wider - Chair  
Mayer Schrieber  
Shie Horowitz  
Isaac Hochberg

## Registered Address

32 Theydon Road  
London  
E5 9NA

## Registered Charity Number

1187417

## Independent Examiner

C Weberman  
Weberman Ltd  
44 Fairholt Road  
London N16 5HW