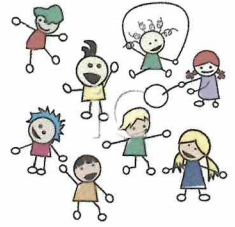




# Broughton Primary's Play Buddies Club



Registered child care facility:  
Nursery Plus, After School Club and Holiday Club

Broughton Primary School,  
Broughton Hall Road,  
Broughton, Flintshire.  
CH4 0QQ

School number : 01244 533752  
Email: [broughtonsplaybuddies@gmail.com](mailto:broughtonsplaybuddies@gmail.com)

---

## Broughton Primary's Playbuddies Annual Report 20<sup>th</sup> October 2025

- Staff
  - 1 member of staff on maternity returning September 2026, 4 new members of staff
- Training undertaken
  - Paediatric First Aid 12hr
  - Paediatric First Aid 6hr
  - Safeguarding
  - Health and Safety at Work
  - Level 2 Playworker
  - Level 3 Playworker
- Buildings - Nothing to report
- Fees
  - Wraparound session charges remain unchanged at £22.50
  - Fees across After School Club remain unchanged but will be reviewed April 2026
  - Due to increasing amount of debt that is accumulating, we will look at new system for debt recovery and also possibly introduce a pre paid booking service.
- Session times
  - Session times across all clubs remain unchanged
- Holiday Club
  - Continues to be very successful with numbers increased across most sessions. We were able to provide childcare for every week of the six week summer break. Numbers of staff have increased due to recommendations by CIW and this is the main reason that a profit is not being made, however we do break even. Operating costs will be monitored moving forwards.

**Broughton Primary's Play Buddies Club**

**Income & Expenditure Account**

**For The Year Ended**

**31st March 2025**

Summary Of Transactions

Broughton Primary's Play Buddies Club

Year Ended 31st March 2025

**RECEIPTS**

**PAYMENTS**

**Opening Balance**

HSBC Account 100,949.48

Payments 185,333.05

Receipts 213,767.59

**Balance c/f**


HSBC Account 129,384.02

314,717.07

314,717.07

Certified

  
Head-teacher

  
Hon Treasurer

**Certification By Auditor**

I hereby certify that I have examined the the accounts for the above named Private School Accounts, and am satisfied that they accurately reflect the position of the fund for the period indicated.

31-07-2025  
DATE

Stamus  
SIGNATURE

**Broughton Primary's Play Buddies Club**

**HSBC Acc No:**

**21286110**

**Year Ended 31st March 2025**

**Bank Summary**

**Community Account**

Opening Balance b/f	100,949.48	
Bankings	213,767.59	
Payments		185,333.05
Closing Balance c/f		<u>129,384.02</u>
	<u><b>314,717.07</b></u>	<u><b>314,717.07</b></u>

**Bank Reconciliation**

Closing Balance as at 31/03/25		177,419.02
Less O/s Items	100090	48,035.00
		<u>48,035.00</u>
<u><b>Adjusted Balance</b></u>		<u><b>129,384.02</b></u>

# Broughton Primary's Play Buddies Club

## Statement of Income & Expenditure For The

Year Ended 31st March 2025

	<u>2025</u>	<u>2024</u>
Child Care Income	87,143	75,206
FCC Funding	-	26,323
Welsh Govt Funding	126,625	85,538
Sundry Donation	-	-
Bank Transfer	-	80
	<u>213,768</u>	<u>187,146</u>
Foodstuffs	3,723	2,289
Supply Costs	835	
Staff Wages / PAYE	<u>85,645</u>	<u>69,092</u>
	<u>90,202</u>	<u>71,381</u>
<b>GROSS PROFIT</b>	<b>123,565</b>	<b>115,765</b>
<b><u>Less Expenditure:</u></b>		
Insurances	533	509
Payroll Services	240	240
Audit Fees	185	180
Bank Charges	60	60
Schoolcomms Charges	560	612
Play Equipment / Resources	1,022	559
Staff Training	140	295
Protective Clothing	125	135
Sundry Expenditure	35	63
Refunds of fees	267	176
	<u>3,168</u>	<u>2,828</u>
<b><u>Excess Income over Expenditure</u></b>		
<b><u>For The Year</u></b>	<b><u>120,398</u></b>	<b><u>112,936</u></b>
<b><u>Other Expenditure:</u></b>		
Transfer of Funds to Broughton CP	2,908	-
FCC Re-imbursements	10,389	-
FCC re Playbuddies Hire Charges	14,295	14,693
FCC re Admin Charges re Buddies	15,510	5,775
FCC re Nursery Plus & Staffing	48,862	39,066
	<u>91,963</u>	<u>59,534</u>
Retained Funds	<u>28,435</u>	<u>53,403</u>

This statement of Income and Expenditure has been prepared from records and information supplied, and I confirm it is in accordance with this information.

Stephen C Harms

31st July 2025