

Broughton Primary's Play Buddies Club

Income & Expenditure Account

For The Year Ended

31st March 2024

Summary Of Transactions

Broughton Primary's Play Buddies Club

Year Ended 31st March 2024

RECEIPTS

PAYMENTS

Opening Balance

HSBC Account 47,546.85

Payments 133,743.30

Receipts 187,145.93

Balance c/f

HSBC Account 100,949.48

234,692.78

234,692.78

Certified



Head-teacher



Hon Treasurer

Certification By Auditor

I hereby certify that I have examined the the accounts for the above named Private School Accounts, and am satisfied that they accurately reflect the position of the fund for the period indicated.

12-06-2024

DATE



SIGNATURE

Broughton Primary's Play Buddies Club

HSBC Acc No:

21286110

Year Ended 31st March 2024

Bank Summary

Community Account

Opening Balance b/f	47,546.85	
Bankings	187,145.93	
Payments		133,743.30
Closing Balance c/f		<u>100,949.48</u>
	<u>234,692.78</u>	<u>234,692.78</u>

Bank Reconciliation

Closing Balance as at 31/3/24		140,015.48
Less O/s Items	100089	39,066.00
		<u>39,066.00</u>
<u>Adjusted Balance</u>		<u>100,949.48</u>

Broughton Primary's Play Buddies Club

Retained Funds

As At 31st March 2024

Balance Brought Forward	47,547
Surplus / Deficit for the year	<u>53,403</u>
Funds Carried Forward	<u>100,949</u>

Represented By:

Bank Current Account	<u>100,949</u>
	<u>100,949</u>

Broughton Primary's Play Buddies Club

Statement of Income & Expenditure For The Year Ended 31st March 2024

	<u>2024</u>	<u>2023</u>
Child Care income	75,206	68,714
FCC Funding	26,323	63,404
Welsh Govt Funding	85,538	3,000
Sundry Donation	-	500
Bank Transfer	80	
	<u>187,146</u>	<u>135,618</u>
Foodstuffs	2,289	1,640
Staff Wages / PAYE	<u>69,092</u>	<u>45,192</u>
	<u>71,381</u>	<u>46,832</u>
GROSS PROFIT	115,765	88,785
<u>Less Expenditure:</u>		
Insurances	509	471
Payroll Services	240	240
Audit Fees	180	175
Bank Charges	60	63
Schoolcomms Charges	612	911
Play Equipment / Resources	559	1,699
Staff Training	295	32
Protective Clothing	135	
Sundry Expenditure	63	35
Refunds of fees	176	896
	<u>2,828</u>	<u>4,521</u>
<u>Excess Income over Expenditure</u>		
<u>For The Year</u>	112,936	84,264
<u>Other Expenditure:</u>		
FCC re Outdoor Facilities		4,909
FCC Re-imbursements		844
FCC re Playbuddies Hire Charges	14,693	14,944
FCC re Admin Charges re Buddies	5,775	-
FCC re Nursery Plus	39,066	44,269
	<u>59,534</u>	<u>64,966</u>
Retained Funds	<u>53,403</u>	<u>19,297</u>

This statement of Income and Expenditure has been prepared from records and information supplied, and I confirm it is in accordance with this information.

Stephen C Harms

12th June 2024

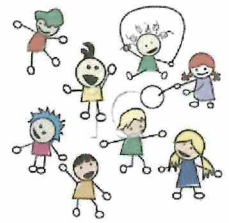


Broughton Primary's Play Buddies Club

Registered child care facility:
Nursery Plus, After School Club and Holiday Club

Broughton Primary School,
Broughton Hall Road,
Broughton, Flintshire.
CH4 0QQ

School number : 01244 533752
Email: broughtonsplaybuddies@gmail.com



Broughton Primary's Playbuddies Annual Report 17th October 2024

- Staff
 - 1 resignation and 1 new member of staff
 - Training undertaken
 - Paediatric First Aid 12hr
 - Paediatric First Aid 6hr
 - Safeguarding
 - Health and Safety at Work
 - Level 2 Playworker
 - Buildings - Nothing to report
 - Fees
 - Wraparound session charges increased to £22.50
 - Fees across After School Club remain unchanged but will be reviewed May 2025
 - Session times
 - Session times across all clubs remain unchanged
 - Holiday Club
 - Continues to be very successful with numbers increased across most sessions. We were able to provide childcare for every week of the seven week summer break. Numbers of staff have increased due to recommendations by CIW and this is the main reason that a profit is not being made. Operating costs will be monitored moving forwards.
-