

PRAIZIN' HANDS PUPPET GROUP

England & Wales · Charity number 1186981

Details

Status Registered

Legal form CIO

Registered 2019-12-17

Register [View on the Charity Commission register](#)

Contact

Address 27 Tormead
Hythe
Southampton
SO45 5AW

Phone 07842142269

Email nigel@praizinhands.org.uk

Website www.praizinhands.org.uk

Activities

Objects: THE ADVANCEMENT OF THE CHRISTIAN FAITH PREDOMINANTLY IN THE SOUTH OF ENGLAND USING PUPPETRY AND CREATIVE ARTS IN AN EVANGELISTIC AND TEACHING NATURE, WORKING WITH PEOPLE OF ALL AGES FROM CHURCHES, SCHOOLS AND COMMUNITIES. DEVELOPING THE SKILLS OF BOTH THE YOUTH AND ADULT PUPPET TEAMS THROUGH TRAINING AND TEAMWORK. TO PRESENT SECULAR EDUCATIONAL PUPPETRY PRESENTATIONS WORKING WITH SCHOOLS AND EDUCATIONAL ESTABLISHMENTS TO ADVANCE THE EDUCATION OF CHILDREN AND YOUNG PEOPLE AS WELL AS ADULTS WITH LEARNING DISABILITIES. IN PARTICULAR BUT NOT EXCLUSIVELY BY COVERING SOCIAL ISSUE TOPICS THAT MAY AFFECT THEIR LIVES.

Activities: We have three puppet teams. One team put on presentations in schools supporting the PSHE curriculum such as Internet Safety, Bullying etc. helping children and young people to make positive choices. Our second team do presentations in schools, care homes, hospices to share the Christmas and Easter stories. Our third youth team lead church services and take part in community fun days.

Classification

- **How:** Provides Services, Provides Advocacy/advice/information, Acts As An Umbrella Or Resource Body
- **What:** Education/training, Religious Activities, Arts/culture/heritage/science, Environment/conservation/heritage, Economic/community Development/employment, Human Rights/religious Or Racial Harmony/equality Or Diversity
- **Who:** Children/young People, Elderly/old People, People With Disabilities, Other Charities Or Voluntary Bodies, The General Public/mankind

Geography

- Throughout England

Finances

Period end	Income	Expenditure	Assets	Employees
2024-12-31	£12,507	£12,454	-	-
2023-12-31	£13,462	£13,358	-	-
2022-12-31	£11,437	£10,373	-	-
2021-12-31	£7,904	£8,547	-	-
2020-12-31	£9,780	£5,566	-	-

Trustees

Name	Role	Appointed
Nigel John Eyres	Chair	2019-08-20
Beverly Jayne Eyres		2019-08-20
Cary Elizabeth Joyce		2019-08-20
Colin Stephen Ridout		2019-08-20
Maryanne Timandra Isobella Kitcherside		2021-05-23

PRAIZIN' HANDS PUPPET GROUP

England & Wales - Charity number 1186981

Accounts



PRAIZIN' HANDS PUPPET GROUP

Trustees' Annual Report and Financial Statement

Year ending 31st December 2024

Charity No: 1186981

Introduction

Another busy year for all three of our puppet teams. This year has seen an increased interest from schools in Southampton wanting to book puppets. These bookings have mainly come about from word of mouth.

One of the most unusual requests we made during the year, was for people to knit us Brussel Sprouts. Thank you to all those who answered the request, we ended up with hundreds made by people from all over the country. We used them as part of our Christmas presentations handing them out with a short bible verse.

For the first time this year, we have run year 6 puppet workshops in three of our local schools, giving children the opportunity to have 'a go' at puppetry. These have been well received, and we hope this will encourage new young people to join our Little Hands youth team.

During the year, we have recorded scripts in a school, using the pupils voices. Doing this enables us to have the child like voices for the puppets in the sketches, meaning the children watching the presentation can relate to them more.

We organised two taster days during the year, looking for new puppeteers. As a result of these events, Romey and Pippa joined our Big Hands team and Gloria joined our Little Hands youth team.

In November, some of our adult puppeteers attended the Equip Creative Ministry Conference, held in Rugby. During this three day event they were able to listen to various speakers and attend different workshops on puppetry skills. We entered the puppetry song competition and received a trophy and certificate as we came first.

When our Big Hands Team perform at Christmas and Easter, we have a small team of up front people who talk to the audience between songs or sketches, as we change over props and scenery. Thank you to Joy, Serena, Liz and Ian for supporting us with this role.

When we rehearse, we either meet at Blackfield Baptist Church or Lyndhurst Baptist Church, depending on the team. We would like to thank them for their continuing support in allowing us to use their premises.

In December, we unfortunately had to say farewell to Norman. He had been part of our stage crew for 16 years and a loyal supporter of Praizin' Hands over this time. It was a privilege to be asked to perform a song for Norman, as a tribute to him, in his funeral service.

Thank you to everyone who supports the work of the puppet group, whether that be through prayer, financially, by being part of a puppet team, sewers, knitters or just words of encouragement to support the teams. Thank you also to my fellow trustees for helping to run the charity ensuring it is run in the best way possible to ensure its future.

Nigel Eyres
Chair of Trustees

Contents:

- Trustees' Annual Report
- Receipts and Payments Accounts
- Statement of Assets and Liabilities
- Notes to the Accounts
- Independent Examiner's Report



Trustees' Annual Report for the period

From	Period start date			To	Period end date		
	01	01	2024		31	12	2024

Section A Reference and administration details

Charity name Praizin' Hands Puppet Group

Other names charity is known by

Registered charity number (if any) 1186981

27 Tormead
 Hythe
 Southampton, Hampshire
 Postcode SO45 5AW

Names of the charity trustees who manage the charity

	Trustee name	Office (if any)	Dates acted if not for whole year	Name of person (or body) entitled to appoint trustee (if any)
1	Nigel John Eyres	Chair		Charity membership
2	Cary Elizabeth Joyce			Charity membership
3	Colin Stephen Ridout			Charity membership
4	Beverly Jayne Eyres			Charity membership
5	Maryanne Timandra Isobella Kitcherside			Charity membership
6				
7				
8				
9				
10				
11				
12				
13				
14				
15				

Names of the trustees for the charity, if any, (for example, any custodian trustees)

	Name	Dates acted if not for whole year
	N/A	

Names and addresses of advisers (Optional information)

Type of adviser	Name	Address

Name of chief executive or names of senior staff members (Optional information)

--

Section B Structure, governance and management

Description of the charity’s trusts

Type of governing document	Constitution – Issue 02 - Released 17.12.2019
How the charity is constituted	Charitable Incorporated Organisation (CIO)
Trustee selection methods	Elected by membership at the AGM

Additional governance issues (Optional information)

You **may choose** to include additional information, where relevant, about:

- policies and procedures adopted for the induction and training of trustees;
- the charity’s organisational structure and any wider network with which the charity works;
- relationship with any related parties;
- trustees’ consideration of major risks and the system and procedures to manage them.

We have the following policies in place that are reviewed annually by the trustees at their October Trustees meeting.

- Health and Safety Policy
- Safeguarding Policy
- Data Protection Policy
- Risk Assessment
- Reserves Policy

All the charity membership that works with the youth team or in schools etc have an enhanced DBS check carried out on them, which are revalidated every 3 years. They also receive annual Safeguarding training.

Section C Objectives and activities

Summary of the objects of the charity set out in its governing document

The advancement of the Christian faith using puppetry and creative arts in an evangelistic and teaching nature, working with people of all ages from churches, schools, and communities. Developing the skills of both the youth and adult puppet teams through training and teamwork.

To present secular educational puppetry presentations working with schools and educational establishments to advance the education of children and young people as well as adults with learning disabilities. By covering social issue topics that may affect their lives.

Summary of the main activities undertaken for the public benefit in relation to these objects (include within this section the statutory declaration that trustees have had regard to the guidance issued by the Charity Commission on public benefit)

Our three puppet teams have had another productive year with new members joining two of our teams.

Our Big Hands adult team, in the weeks leading up to Easter and Christmas, visited schools including special needs schools and adults with learning disabilities with their new presentations.

Our PSHE Schools Project team (personal, social, health and economic) have been working with schools all year to put on presentations on social issue topics. We have launched a new Wellbeing and Mental Health presentation, with 2 slightly different versions suitable for Key Stage 1 (Infants) and Key Stage 2 (Juniors).

Our youth team, this year, have performed at different events during the year, leading four Church services and at a community fun day, for over 800 people.

The trustees have had regard to the guidance issued by the Charity Commission on public benefit.

Additional details of objectives and activities (Optional information)

You **may choose** to include further statements, where relevant, about:

- policy on grantmaking;
- policy programme related investment;
- contribution made by volunteers.

The charity has no paid staff and is run totally by volunteers. The trustees rely on the commitment of these volunteers to develop and grow the work of the charity.

We do not make a charge for the work we do, so rely on donations and grants received during the year, to support the charity.

We do not supply grants or have an investment policy.

Summary of the main achievements of the charity during the year

As we have three different teams, we have summarised their activities during the year, below:

Big Hands Adult Team

The Easter and Christmas presentations have again been a great success this year. The Easter presentation tour visited 12 venues and the Christmas presentation 17 venues. Combined, they have been watched by over 7,000 people

The team has welcomed two new puppeteers, who joined in time to participate in our Christmas Presentations.

PSHE Schools Project

This team put on presentations throughout the year in schools on social issue topics supporting the personal, social, health and economic (PSHE) education curriculum.

We have introduced 2 new presentations this year, Wellbeing for KS1 (Infants) and Wellbeing and Mental Health for KS2 (Juniors). These presentations have been performed in 18 different schools.

They have performed presentations on 2 other topics during the year on Friendships and our All Change presentation for year 2 children who will be moving to a new school.

Little Hands Youth Team

Another busy year for this team with 5 performances. Their theme for the year was Daniel in the Lions Den which they have performed at Messy Church in Marchwood, The Church of Landford, Messy Church at Lymington Baptist Church, Waypoint Summer Fun Day and Southwick Methodist Church.

When the team have not been rehearsing or performing, they have had a social time in their regular meetings playing games and learning more about God. During the year, they have had outings to crazy golf, bowling and Aeroball.

Praying Hands

This group was set up in 2023 to bring together people who felt led to pray for the work of the charity. They have continued to flourish during the year with regular meetings, in a small group. They also share to a wider prayer group of people who cannot attend the meetings.

Fundraising

In January, we received a grant from Sovereign Networking Group (SNG) For £995. The grant was to cover the cost for a new Mental Health presentation. The grant enabled us to purchase new puppets, props and scenery for the new presentation.

Brief statement of the charity's policy on reserves

We have a reserves policy in place that gives the charity an increased level of financial security against unexpected costs. During the year we have not needed to use this reserve fund.

The trustees consider what the reserve fund could be used to cover, like unexpected costs that have not been budgeted for or replacing failed equipment, repairs to the van or to cover a drop in donations, so the charity can continue to operate.

Considering all these factors that this reserve fund may need to cover, the reserve fund value has been set as £2,000. This amount is held in our bank account as unrestricted funds.

Details of any funds materially in deficit

None

Further financial review details (Optional information)

You **may choose** to include additional information, where relevant about:

- the charity's principal sources of funds (including any fundraising);
- how expenditure has supported the key objectives of the charity;
- investment policy and objectives including any ethical investment policy adopted.

Our main source of funding comes from the donations we receive during the year which was £9,139, which is 73% of our receipts. These donations are made up of regular monthly donations (52%) and single donations (48%). On many of these donations, we are able to claim Gift Aid which has added an additional £716.

We also apply for grants to support the work of the charity, especially to cover the cost of new presentations. In January, we received a grant for £955 for a new Project team presentation. Further details of this grant can be found under the account notes section.

The donations and grants we have received have enabled the charity to offer performances and activities to achieve the charity's objectives.

During the year 2024, receipts were £12,507 and payments were £12,454, giving a net increase of £53. Total carried forward £6,487.

In May we changed our bank account to The Cooperative Bank, closing our previous HSBC account. We changed as the Co-op do not charge us for using the account and it enabled us to have internet banking

We do not have an investment policy.

Section F

Other optional information

The puppet groups equipment is currently stored at a unit in Hythe, which we rent. The location of the unit is ideal as it is central and allows us to drive the van up to the doors, for loading and unloading, but it also has a number of other points that do not make it ideal.

We would like to find a better and larger unit to use for storage and possibly rehearsals. Due to the condition of the building, we current rent, some of our equipment is deteriorating, so we are searching for a better and newer building within our limited price range.

Section G

Declaration

The trustees declare that they have approved the trustees' report above.

Signed on behalf of the charity's trustees

Signature(s)	<i>NEyres</i>	<i>Cary Joyce</i>
Full name(s)	Nigel John Eyres	Cary Elizabeth Joyce
Position (eg Secretary, Chair, etc)	Chair	Trustee
Date	1 May 2025	



Receipts and payments accounts

CC16a

For the period from	1.Jan.24	To	31.Dec.24
---------------------	----------	----	-----------

Section A Receipts and payments

	Notes	Unrestricted funds to the nearest £	Restricted funds to the nearest £	Endowment funds to the nearest £	Total funds to the nearest £	Last year to the nearest £
A1 Receipts						
Donations - Monthly	1	4,728	-	-	4,728	4,368
Donations	2	4,411	-	-	4,411	4,752
Gift Aid Rebate	3	716	-	-	716	711
Hall Hire	4	650	-	-	650	677
Team Clothing	5	156	-	-	156	158
Adopt a Puppet	6	-	-	-	-	75
Trips and Outings	7	174	-	-	174	160
Amazon Smile	8	-	-	-	-	49
Easy Fundraising	8	35	-	-	35	51
Activity Supplies	9	48	-	-	48	44
Grants	11	-	995	-	995	1,750
Merchandise	12	40	-	-	40	98
Anniversary		-	-	-	-	330
Equip Puppet Festival	23	555	-	-	555	240
		-	-	-	-	-
Sub total (Gross income for AR)		11,512	995	-	12,507	13,462
A2 Asset and investment sales, (see table).						
		-	-	-	-	-
		-	-	-	-	-
Sub total		-	-	-	-	-
Total receipts		11,512	995	-	12,507	13,462
A3 Payments						
Storage	10	4,837	-	-	4,837	5,377
Hall Hire	4	230	-	-	230	796
Puppet Van	13	2,193	-	-	2,193	1,718
Insurance	14	849	-	-	849	724
Administration	15	182	-	-	182	117
Activity Supplies	9	203	-	-	203	176
Bank Charges	16	68	-	-	68	107
Trips and Outings	7	170	-	-	170	165
Testing	17	70	-	-	70	65
Team Clothing	5	197	-	-	197	172
DBS Checks	18	86	-	-	86	84
Training	19	-	-	-	-	200
Travel Expenses	20	73	-	-	73	-
Refreshments	21	47	-	-	47	14
Miscellaneous	22	137	-	-	137	183
COVID-19		-	-	-	-	3
Adopt a Puppet	6	-	-	-	-	-
Anniversary		-	-	-	-	363
Equip Puppet Festival	23	555	-	-	555	240
		-	-	-	-	-
Sub total		9,895	-	-	9,895	10,505
A4 Asset and investment purchases, (see table)						
Equipment		702	-	-	702	1,410
Puppets		415	935	-	1,350	1,200
Props and Scenery		447	60	-	507	243
		-	-	-	-	-
Sub total		1,564	995	-	2,559	2,853
Total payments		11,459	995	-	12,454	13,358
Net of receipts/(payments)		53	-	-	53	105
A5 Transfers between funds		-	-	-	-	-
A6 Cash funds last year end		6,434	-	-	6,434	6,329
Cash funds this year end		6,487	-	-	6,487	6,434

Section B Statement of assets and liabilities at the end of the period

Categories	Details	Unrestricted funds to nearest £	Restricted funds to nearest £	Endowment funds to nearest £
B1 Cash funds	Cash at Bank	5,742	-	-
	Cheques not Cashed	71	-	-
	Money not Banked	816	-	-
	Total cash funds	6,487	-	-
	(agree balances with receipts and payments account(s))	OK	OK	OK
		Unrestricted funds to nearest £	Restricted funds to nearest £	Endowment funds to nearest £
B2 Other monetary assets	Details			
	None	-	-	-
		-	-	-
		-	-	-
		-	-	-
		-	-	-
B3 Investment assets	Details	Fund to which asset belongs	Cost (optional)	Current value (optional)
	None		-	-
			-	-
			-	-
			-	-
B4 Assets retained for the charity's own use	Details	Fund to which asset belongs	Cost (optional)	Current value (optional)
	Peugeot Expert Van	Unrestricted	-	-
	Puppets	Unrestricted	-	-
	Staging	Unrestricted	-	-
	Props and Scenery	Unrestricted	-	-
	Audio, Visual & Lighting Equipment	Unrestricted	-	-
	Outdoor Puppetry Equipment	Unrestricted	-	-
			-	-
B5 Liabilities	Details	Fund to which liability relates	Amount due (optional)	When due (optional)
	None		-	
			-	
			-	
			-	
Signed by one or two trustees on behalf of all the trustees	Signature	Print Name		Date of approval
	<i>N. Eyres</i>	Nigel John Eyres		1. May 25
	<i>Cary Joyce</i>	Cary Elizabeth Joyce		1. May 25

Accounts Notes

Notes	Comments
1	<p>Donations – Monthly The regular monthly donations increased again during the year. We now receive £399.00 a month as regular monthly donations via standing order.</p>
2	<p>Donations During the year we received a total of 42 donations from schools, Churches, etc and individuals. Some making more than one donation during the year. The number of donations received was 1 less than in 2023 and the value was down by £341.00</p>
3	<p>Gift Aid Rebate Several of the personal donations we received we were able to claim back 25% Gift Aid on.</p>
4	<p>Hall Hire As the Big Hands and Little Hands teams now rehearse at Blackfield Baptist Church our hall hire costs have reduced. The Church do not charge us, so our only costs are the donation we make towards heating and electricity for using the building. As the money we received to cover the hall hire, this year, was higher than the donation we made, this money was used to support other puppet expenses, especially our Little Hands Team.</p>
5	<p>Team Clothing The puppet team's polo shirts and hoodies, the volunteers wear, they pay for themselves. We will support team members with the cost of the polo shirts, should it be necessary. The difference in value between the receipts and expenses is because some items have been paid for in 2025.</p>
6	<p>Adopt a Puppet This is a scheme when you can adopt one of our puppets for a year. There is also the option of naming a puppet. – No puppets were adopted in 2024</p>
7	<p>Trips and Outings This covered the cost of taking our Little Hands youth team to the Crazy Golf, Aeroball and Bowling during the year. The trips are paid for by those who attend the event.</p>
8	<p>Easy Fundraising We receive a small donation from Easy Fundraising when people make purchases that are linked to the charity.</p>
9	<p>Activity Supplies This covers the cost of running different activities organised for our Little Hands youth team during their meetings. Some of the activities, like the Christmas party, the team contribute towards.</p>
10	<p>Storage This covers the cost of us hiring a unit to store all our equipment.</p>
11	<p>Grants (Restricted Funds) Sovereign Network Group (SNG) – We received a grant for £995.00 in January for a new Mental Health presentation. This enabled us to buy some new puppets and props and scenery. (Grants are recorded as restricted funds as they have to be spent on the items they have been awarded for, so cannot be used for other expenses)</p>
12	<p>Merchandise We have some branded pens, notebooks keyrings etc that we sold during the year.</p>
13	<p>Puppet Van This covers the annual cost of running the puppet van, including diesel, servicing and repairs and insurance.</p>
14	<p>Insurance This covers the liability insurance, equipment insurance and other insurances needed for the charity. This cost increased again this year.</p>
15	<p>Administration This covered the cost of running the charity, for example stationary, stamps, printer ink etc. It also includes the cost of booking the hall for the AGM.</p>
16	<p>Bank Charges This is the cost incurred on our bank account with HSBC. We paid a monthly charge and then an additional cost for processing cheques. We closed the account in August, so these charges are only for part of the year. We now bank with the Cooperative Bank who do not make a charge.</p>

17	Testing Covers the annual PAT testing of all the puppet groups electrical equipment. We need this testing to be able to use our equipment in schools and other venues.
18	DBS Checks All new adult puppeteers need to have an enhanced DBS check when they join. The DBS checks are then revalidated every 3 years
19	Training We arrange external safeguarding training for the puppet team every other year. No cost shown as the next training will be in 2025.
20	Travel Expenses When we do puppet performances that are not in the local area, we contribute to the fuel costs of these who drive to the venue.
21	Refreshments This is for our rehearsals used at our Little Hands team meetings.
22	Miscellaneous For these costs that fall outside the other categories.
23	Equip Puppet Festival This is an annual event that some of our adult puppeteers attended. The cost of the tickets to attend this festival were covered by those attending.

General

- The charity's accounts are receipts and payments accounts.
- All values are rounded to the nearest whole £.



Section A

Independent Examiner's Report

Report to the trustees/ members of

Praizin' Hands Puppet Group

On accounts for the year ended

31st December 2024

Charity no (if any)

1186981

Set out on pages

9 to 12

(remember to include the page numbers of additional sheets)

I report to the trustees on my examination of the accounts of the above charity ("the Trust") for the year ended 31/12/2024.

Responsibilities and basis of report

As the charity trustees of the Trust, you are responsible for the preparation of the accounts in accordance with the requirements of the Charities Act 2011 ("the Act").

Independent examiner's statement

I report in respect of my examination of the Trust's accounts carried out under section 145 of the 2011 Act and in carrying out my examination, I have followed the applicable Directions given by the Charity Commission under section 145(5)(b) of the Act.

I have completed my examination. I confirm that no material matters have come to my attention (~~other than that disclosed below*~~) in connection with the examination which gives me cause to believe that in, any material respect:

- accounting records were not kept in accordance with section 130 of the Act or
- the accounts do not accord with the accounting records.

I have no concerns and have come across no other matters in connection with the examination to which attention should be drawn in order to enable a proper understanding of the accounts to be reached.

* Please delete the words in the brackets if they do not apply.

Signed:

A.P. Nicholas

Date:

9th June 2025

Name:

Alan Nicholas

Relevant professional qualification(s) or body (if any):

Chartered Accountant (ICAEW)

Address:

15A Wellands Road

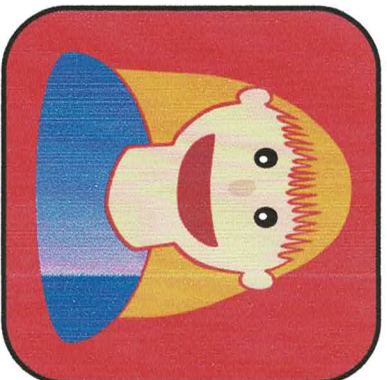
Lyndhurst, Hampshire

SO43 7AB

PRAIZIN' HANDS PUPPET GROUP

England & Wales - Charity number 1186981

Accounts



PRAIZIN' HANDS PUPPET GROUP

Trustees' Annual Report and Financial Statement

Year ending 31st December 2023

Charity No: 1186981

Introduction

It has been another successful year for the charity, with some new puppeteers joining, and us visiting some new schools for the first time. We have also been back to visit places like Naomi House for the first time in a few years.

In May we celebrated the 20th Anniversary of the puppet group when all the teams came together for a meal and to play skittles. When we started, we had 3 puppets and a stage made from plastic tubing, how things have changed over the years! We now have to hire a unit to store our equipment and have a van to transport it.

The details of the puppet group's activities are shared in a quarterly newsletter. The newsletter includes details of the activities of the three puppets team along with other information and future events. These are available via email or downloadable from our website.

This year we have started to work more closely with one of our schools. This has enabled us to use some of their pupils to record scripts for our new Wellbeing presentations. They have also asked us to organise puppet workshops in the school, sharing the puppets they have made in class.

In November some of our adult puppeteers attend the Equip Festival in Rugby. This festival is attended by puppeteers from all over the UK and a few from Europe. It was an ideal time for those attending to be with other puppeteers and to learn new skills. We also entered one of the puppetry competitions and performed 'Baskin' in Sonshine', which we received a trophy for, as we came first.

In March we set up a prayer group, call Praying Hands to pray for the work of the puppet group. This small group is run by Maz and meets regularly for prayer. A few other people who are unable to attend these meetings pray separately.

The following pages of the report give a summary of the activities we have achieved during 2023 and our financial position as at the end of the year.

Thank you to everyone who supports the work of the puppet group, whether that be financially, through prayer, by being a puppeteer or just words of encouragement to support the teams. Thank you also to my fellow trustees for helping to run the charity ensuring it is run in the best way possible to ensure its future.

Nigel Eyres
Chair of Trustees

Contents:

- Trustees' Annual Report
- Receipts and Payments Accounts
- Statement of Assets and Liabilities
- Notes to the Accounts
- Independent Examiner's Report



Trustees' Annual Report for the period

Period start date **From** 01 01 2023 **To** Period end date 31 12 2023

Section A

Reference and administration details

Charity name Praizin' Hands Puppet Group

Other names charity is known by

Registered charity number (if any) 1186981

27 Tormead
 Hythe
 Southampton, Hampshire
 Postcode SO45 5AW

Names of the charity trustees who manage the charity

	Trustee name	Office (if any)	Dates acted if not for whole year	Name of person (or body) entitled to appoint trustee (if any)
1	Nigel John Eyres	Chair		Charity membership
2	Gary Elizabeth Joyce			Charity membership
3	Colin Stephen Ridout			Charity membership
4	Beverly Jayne Eyres			Charity membership
5	Maryanne Timandra Isobella Kitcherside			Charity membership
6				
7				
8				
9				
10				
11				
12				
13				
14				
15				

Names of the trustees for the charity, if any, (for example, any custodian trustees)

Name	Dates acted if not for whole year
N/A	

Names and addresses of advisers (Optional information)

Type of adviser	Name	Address

Name of chief executive or names of senior staff members (Optional information)

Section B Structure, governance and management

Description of the charity's trusts

Type of governing document	Constitution – Issue 02 - Released 17. 12.2019
How the charity is constituted	Charitable Incorporated Organisation (CIO)
Trustee selection methods	Elected by membership at the AGM

Additional governance issues (Optional information)

<p>You may choose to include additional information, where relevant, about:</p> <ul style="list-style-type: none"> • policies and procedures adopted for the induction and training of trustees; • the charity's organisational structure and any wider network with which the charity works; • relationship with any related parties; • trustees' consideration of major risks and the system and procedures to manage them. 	<p>We have the following policies in place that are reviewed annually by the trustees at their October Trustees meeting.</p> <ul style="list-style-type: none"> • Health and Safety Policy • Safeguarding Policy • Data Protection Policy • COVID19 Policy • Risk Assessment • Reserves Policy <p>All the charity membership that works with the youth team or in schools etc have an enhanced DBS check carried out on them, which are revalidated every 3 years. They also receive annual Safeguarding training.</p>
---	--

Section C Objectives and activities

<p>Summary of the objects of the charity set out in its governing document</p>	<p>The advancement of the Christian faith using puppetry and creative arts in an evangelistic and teaching nature, working with people of all ages from churches, schools, and communities. Developing the skills of both the youth and adult puppet teams through training and teamwork.</p> <p>To present secular educational puppetry presentations working with schools and educational establishments to advance the education of children and young people as well as adults with learning disabilities. By covering social issue topics that may affect their lives.</p>
--	---

Summary of the main activities undertaken for the public benefit in relation to these objects (include within this section the statutory declaration that trustees have had regard to the guidance issued by the Charity Commission on public benefit)

Our three puppet teams have had a productive year with new members joining two of our teams.

Our Big Hands adult team, in the weeks leading up to Easter and Christmas, visited schools including special needs schools and care homes with their new presentations.

Our PSHE Schools Project team (personal, social, health and economic) have been working with schools all year to put on presentations on social issues. We have launched a new Internet safety presentation for Key Stage 1 during the year.

Our youth team this year have performed at different events including an outdoor community event attended by over 5,000 people.

The trustees have had regard to the guidance issued by the Charity Commission on public benefit.

Additional details of objectives and activities (Optional information)

The charity has no paid staff and is run totally by volunteers. The trustees rely on the commitment of these volunteers to develop and grow the work of the charity.

We do not make a charge for the work we do, so rely on donations and grants received during the year, to support the charity.

We do not supply grants or have an investment policy.

You may choose to include further statements, where relevant, about:

- policy on grantmaking;
- policy programme related investment;
- contribution made by volunteers.

Summary of the main achievements of the charity during the year

As we have three different teams, we have summarised their activities during the year below:

Big Hands Adult Team

The team completed both their Easter and Christmas schedule of performances in the weeks leading up to these events. These were new presentations that we performed this year, which will be repeated in 2024.

During these performances, they visited 27 schools and care homes and performed to over 6,000 people in schools, care homes and churches. During the year we welcomed 1 new member to the team.

PSHE Schools Project

This team put on presentations throughout the year on social issue topics. This year they have visited 27 schools to cover a presentation on one of the following topics Cyberbullying, Internet Safety (Key Stage 1) and Looking after our world.

Little Hands Youth Team

This team has continued to grow this year as we have had 2 new members join.

The team have performed at St Andrews Church, St Johns Church, to their parents and the Big Hands team during the year. They also performed at the Totton Fun Day, a community events attended by over 5,000 people.

Funding

At the end of 2022, we received a grant from the Tesco Blue token scheme, for £500 to enable us to purchase some new style puppets early in the year. These puppets have been used to enhance the School Project presentations.

We have also received grants from the Benefact Trust for £750 to cover part of the cost of our new Christmas presentation and from the Ford Trust for £1,000 to purchase a new sound system.

Brief statement of the charity's policy on reserves

We have a reserves policy in place that gives the charity an increased level of financial security against unexpected costs. During the year we have not needed to use this reserve fund.

The trustees consider what the reserve fund could be used to cover, like unexpected costs that have not been budgeted for or replacing failed equipment, repairs to the van or to cover a drop in donations, so the charity can continue to operate.

Considering all these factors that this reserve fund may need to cover, the reserve fund value has been set as £2,000. This amount is held in our bank account as unrestricted funds.

Details of any funds materially in deficit

None

Further financial review details (Optional information)

You may choose to include additional information, where relevant about:

- the charity's principal sources of funds (including any fundraising);
- how expenditure has supported the key objectives of the charity;
- investment policy and objectives including any ethical investment policy adopted.

Our main source of funding comes from the donations we receive during the year which was £9,120, which is 68% of our receipts. These are either as regular monthly donations (48%) or 1 off donations (52%). On a number of these donations, we can claim Gift Aid which added an additional £711 to our funds.

This year, we also received 2 Grants, one for £1,000 and the other for £750. We also had the £500 from the Tesco Blue token scheme awarded at the end of 2022 that was spent this year. Further details on these grants can be found under the account notes section.

The donations and grants we have received during the year have enabled the charity to offer performances and activities to achieve the charity's objectives.

During the year 2023, receipts were £13,462 and payments were £13,358, giving a net increase of £105. Total carried forward £6,434.

We do not have an investment policy.

Section F

Other optional information

We currently hire a unit in Hythe to store all our equipment, as with three puppet teams we have a large number of puppets and props to store. We would like to find a better storage location that has better facilities and possibly additional space for rehearsals. We regularly review what is available locally, but the options are limited within our price range. We continue to search and believe in the future a suitable building will become available.

Section G

Declaration

The trustees declare that they have approved the trustees' report above.

Signed on behalf of the charity's trustees

Signature(s)	Full name(s)	Position (eg Secretary, Chair, etc)
<i>N Eyles</i>	Nigel John Eyles	Chair
<i>Cary Joyce</i>	Cary Elizabeth Joyce	Trustee

Date *07-05-2024*



Receipts and payments accounts

CC16a

For the period from	1 Jan 23	To	31 Dec 23
---------------------	----------	----	-----------

Section A Receipts and payments

	Unrestricted funds to the nearest £	Restricted funds to the nearest £	Endowment funds to the nearest £	Total funds to the nearest £	Last year to the nearest £
A1 Receipts					
Notes					
Donations - Monthly	1 4,368	-	-	4,368	3,413
Donations	2 4,752	-	-	4,752	5,790
Gift Aid Rebate	3 711	-	-	711	568
Hall Hire	4 677	-	-	677	769
Team Clothing	5 158	-	-	158	54
Adopt a Puppet	6 75	-	-	75	85
Trips and Outings	7 160	-	-	160	94
Amazon Smile	8 49	-	-	49	48
Easy Fundraising	8 51	-	-	51	23
Activity Supplies	9 44	-	-	44	37
Grants	11 -	1,750	-	1,750	500
Merchandise	12 98	-	-	98	58
Anniversary	23 330	-	-	330	-
Puppet Festival	24 240	-	-	240	-
Sub total (Gross income for AR)	11,712	1,750	-	13,462	11,437

A2 Asset and investment sales, (see table).

	-	-	-	-	-
Sub total	-	-	-	-	-
Total receipts	11,712	1,750	-	13,462	11,437

A3 Payments

Storage	10 5,377	-	-	5,377	5,132
Hall Hire	4 796	-	-	796	1,955
Puppet Van	13 1,718	-	-	1,718	1,360
Insurance	14 724	-	-	724	688
Administration	15 117	-	-	117	296
Activity Supplies	9 176	-	-	176	152
Bank Charges	16 107	-	-	107	94
Trips and Outings	7 165	-	-	165	77
Testing	17 65	-	-	65	65
Team Clothing	5 172	-	-	172	54
DBS Checks	18 84	-	-	84	48
Training	19 200	-	-	200	40
Travel Expenses	-	-	-	-	30
Refreshments	20 14	-	-	14	27
Miscellaneous	21 183	-	-	183	18
COVID-19	22 3	-	-	3	18
Adopt a Puppet	6 -	-	-	-	-
Anniversary	23 363	-	-	363	-
Puppet Festival	24 240	-	-	240	-
Sub total	10,505	-	-	10,505	10,055

A4 Asset and investment purchases, (see table)

Equipment	410	1,000	-	1,410	182
Puppets	30	1,170	-	1,200	22
Props and Scenery	163	80	-	243	114
Sub total	603	2,250	-	2,853	318

Total payments

	11,108	2,250	-	13,358	10,373
--	---------------	--------------	----------	---------------	---------------

Net of receipts/(payments)

	605	500	-	105	1,064
--	------------	------------	----------	------------	--------------

A5 Transfers between funds

	-	-	-	-	-
--	---	---	---	---	---

A6 Cash funds last year end

	5,829	500	-	6,329	5,265
--	-------	-----	---	-------	-------

Cash funds this year end

	6,434	-	-	6,434	6,329
--	--------------	----------	----------	--------------	--------------

Section B Statement of assets and liabilities at the end of the period

Categories

B1 Cash funds

Details	Unrestricted funds to nearest £	Restricted funds to nearest £	Endowment funds to nearest £
Cash at Bank	7,194	-	-
Cheques not Cashed	760	-	-
Money not Banked	-	-	-
Total cash funds	6,434	-	-

(agree balances with receipts and payments account(s))

B2 Other monetary assets

Details	Unrestricted funds to nearest £	Restricted funds to nearest £	Endowment funds to nearest £
None	-	-	-
	-	-	-
	-	-	-
	-	-	-
	-	-	-
	-	-	-

B3 Investment assets

Details	Fund to which asset belongs	Cost (optional)	Current value (optional)
None		-	-
		-	-
		-	-
		-	-
		-	-

B4 Assets retained for the charity's own use

Details	Fund to which asset belongs	Cost (optional)	Current value (optional)
Peugeot Expert Van	Unrestricted	-	-
Puppets	Unrestricted	-	-
Staging	Unrestricted	-	-
Props and Scenery	Unrestricted	-	-
Audio, Visual & Lighting Equipment	Unrestricted	-	-
Outdoor Puppetry Equipment	Unrestricted	-	-
		-	-
		-	-

B5 Liabilities

Details	Fund to which liability relates	Amount due (optional)	When due (optional)
None		-	
		-	
		-	
		-	
		-	

Signed by one or two trustees on behalf of all the trustees

Signature	Print Name	Date of approval
<i>N Eyres</i>	Nigel John Eyres	07-05-24
<i>Cary Elizabeth Joyce</i>	Cary Elizabeth Joyce	07-05-24

Accounts Notes

Notes	Comments
1	Donations – Monthly The regular monthly donations increased during the year. We now receive £379.00 a month as regular monthly donations via standing order.
2	Donations During the year we received a total of 43 donations from schools, Churches, etc and individuals. Some making more than one donation during the year. The number of donations received was up slightly on 2022, but the combined value was down by about £1,000.
3	Gift Aid Rebate Several of the personal donations we received we were able to claim back 25% Gift Aid on.
4	Hall Hire We started the year hiring St Francis Church for rehearsals for Big Hands and Little Hands teams. They then had a problem with their roof, so we changed to meeting at The Good Shepherd Church (Little Hands) and Lyndhurst Baptist Church (Big Hands). We ended the year with both teams meeting at Blackfield Baptist Church which they allow us to use for free, so we make a donation to them for the heating and electrics. This has reduced our annual costs for hall hire. Each team contribute towards the cost of the hire.
5	Team Clothing The puppet team's polo shirts and hoodies, the volunteers wear, they pay for themselves. We will support team members with the cost of the polo shirts, should it be necessary.
6	Adopt a Puppet This is a scheme when you can adopt one of our puppets for a year. There is also the option of naming a puppet.
7	Trips and Outings This covered the cost of taking our Little Hands youth team to the Pedal Karts and Adventure course at Ferry Crofts and also a Bowling Trip during the year.
8	Amazon Smile / Easy Fundraising We receive a small donation from both Amazon Smile and Easy Fundraising when people make purchases that are linked to the charity. Amazon stopped offering Amazon Smile part way through the year.
9	Activity Supplies This covers the cost of running different activities organised for our Little Hands youth team during their meetings
10	Storage This covers the cost of us hiring a unit to store all our equipment.
11	Grants (Restricted Funds) Tesco Blue Tokens: We received a grant of £500 at the end of 2022 for the Project Team to purchase new style puppets. This was spent early in 2023. Benefact Trust: They awarded us a grant for £750 to go towards the cost of our new Christmas presentation. Ford Trust: We received a grant of £1,000 to cover the cost of a new sound system. (Grants are recorded as restricted funds as they have to be spent on the items they have been awarded for, so cannot be used for other expenses)
12	Merchandise We have some branded pens, notebooks keyrings etc that we sold during the year.
13	Puppet Van This covers the annual cost of running the puppet van, including diesel, servicing and repairs and insurance.
14	Insurance This covers the liability insurance needed for the charity and the equipment insurance. This cost has increased this year.
15	Administration This covered the cost of running the charity, for example stationary, stamps, printer ink etc. It also includes the cost of booking the hall for the AGM.

16	Bank Charges This is the cost incurred for our bank account with HSBC. We pay a monthly charge and then an additional cost for processing cheques.
17	Testing Covers the annual PAT testing of all the puppet groups electrical equipment.
18	DBS Checks All new adult puppeteers need to have an enhanced DBS check when they join. Some of the first DBS checks we did are now 3 years old so have needed to be revalidated.
19	Training We arrange external safeguarding training for the puppet team every other year.
20	Refreshments This is for our rehearsals used at our puppets teams meetings.
21	Miscellaneous For these one off costs that fall outside the other categories.
22	COVID-19 Covers the cost of hand gel, cleaner etc we have needed to purchase during the year.
23	Anniversary We celebrated the 20 th anniversary of the puppet group and arranged a celebration party to mark this achievement. The people attending paid to attend which covered the majority of the costs incurred.
24	Puppet Festival This is an annual event that some of our adult puppeteers attended. The cost of the tickets to attend this festival were covered by those attending.

General

- The charity's accounts are receipts and payments accounts.
- All values are rounded to the nearest whole £.



Section A

Independent Examiner's Report

**Report to the trustees/
members of**

Praizin' Hands Puppet Group

**On accounts for the year
ended**

31st December 2023

**Charity no
(if any)**

1186981

Set out on pages

9 to 12

I report to the trustees on my examination of the accounts of the above charity ("the Trust") for the year ended 31/12/2023.

**Responsibilities and
basis of report**

As the charity trustees of the Trust, you are responsible for the preparation of the accounts in accordance with the requirements of the Charities Act 2011 ("the Act").

I report in respect of my examination of the Trust's accounts carried out under section 145 of the 2011 Act and in carrying out my examination, I have followed the applicable Directions given by the Charity Commission under section 145(5)(b) of the Act.

I have completed my examination. I confirm that no material matters have come to my attention ~~(either than that disclosed below)~~ in connection with the examination which gives me cause to believe that in, any material respect:

- accounting records were not kept in accordance with section 130 of the Act or
- the accounts do not accord with the accounting records.

I have no concerns and have come across no other matters in connection with the examination to which attention should be drawn in order to enable a proper understanding of the accounts to be reached.

** Please delete the words in the brackets if they do not apply.*

**Independent
examiner's statement**

Signed:

A.P. Nicholas

Date:

12th June 2024

Name: Alan Nicholas

**Relevant professional
qualification(s) or body
(if any):**

Chartered Accountant (ICAEW)

Address:

15A Wellands Road

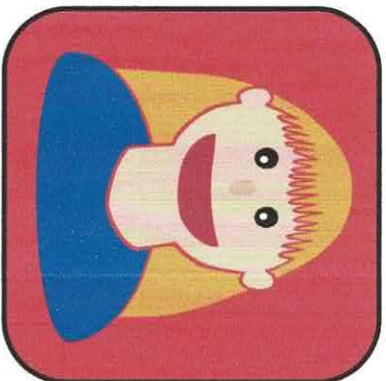
Lynnhurst, Hampshire

SO43 7AB

PRAIZIN' HANDS PUPPET GROUP

England & Wales - Charity number 1186981

Accounts



**PRAIZIN' HANDS
PUPPET GROUP**

Trustees' Annual Report
and
Financial Statement

Year ending 31st December 2022

Charity No: 1186981

Introduction

This is the first year, since we became a charity, that we have managed to offer almost a full year of 'in person' performances because of the removal of the COVID restrictions. Unfortunately, we did have to cancel two weeks of performances at Easter because 3 members of the team went down with it. However, the two weeks we did manage to complete, was a great success.

We have had a successful time performing in schools, care homes and at community events during the year. We have reached new groups of people and have also been back visiting venues which we may not have visited for the last 3 years. Thank you for the hard work and support of all the puppeteers to enable us to offer a full programme, this is greatly appreciated. This is not just for the performances themselves but also all the rehearsals that happen in the weeks and months beforehand.

Thank you to my fellow trustees who have helped lead the charity throughout the year, helping to ensure we manage the charity to secure its future and further development.

In March, Gay and Gordon stepped down from our Big Hands team. They have both been active members for a number of years, Gay as a puppeteer and Gordon as part of our stage crew.

Thank you to all the people who support the puppet group with monthly donations. Also, thank you for all those who make 1 off donations throughout the year. These donations enable us to continue our work every year.

The following pages of the report give a summary of the activities we have achieved during 2022 and our financial position as at the end of the year.

We have had some positive signs of growth in the puppet teams over the year and we look forward to continuing our work through 2023 and beyond, to visit new venues to further spread the work of the puppet group in the community.

Nigel Eyres

Chair of Trustees

Contents:

- Trustees' Annual Report
- Receipts and Payments Accounts
- Statement of Assets and Liabilities
- Notes to the Accounts
- Independent Examiner's Report



Trustees' Annual Report for the period

From	Period start date	To	Period end date
	01 01 2022		31 12 2022

Section A

Reference and administration details

Charity name Prazilin' Hands Puppet Group

Other names charity is known by

Registered charity number (if any) 1186981

27 Tormead
Hythe
Southampton, Hampshire
Postcode SO45 5AW

Names of the charity trustees who manage the charity

	Trustee name	Office (if any)	Dates acted if not for whole year	Name of person (or body) entitled to appoint trustee (if any)
1	Nigel John Eyres	Chair		Charity membership
2	Cary Elizabeth Joyce			Charity membership
3	Colin Stephen Ridout			Charity membership
4	Beverly Jayne Eyres			Charity membership
5	Maryanne Timandra Isobella Kitcherside			Charity membership
6				
7				
8				
9				
10				
11				
12				
13				
14				
15				

Names of the trustees for the charity, if any, (for example, any custodian trustees)

Name	Dates acted if not for whole year
N/A	

Names and addresses of advisers (Optional information)

Type of adviser	Name	Address

Name of chief executive or names of senior staff members (Optional information)

--

Section B Structure, governance and management

Description of the charity's trusts

Type of governing document	Constitution – Issue 02 - Released 17.12.2019
How the charity is constituted	Charitable Incorporated Organisation (CIO)
Trustee selection methods	Elected by membership at the AGM

Additional governance issues (Optional information)

<p>You may choose to include additional information, where relevant, about:</p> <ul style="list-style-type: none"> • policies and procedures adopted for the induction and training of trustees; • the charity's organisational structure and any wider network with which the charity works; • relationship with any related parties; • trustees' consideration of major risks and the system and procedures to manage them. 	<p>We have the following policies in place that are reviewed annually by the trustees.</p> <ul style="list-style-type: none"> • Health and Safety Policy • Safeguarding Policy • Data Protection Policy • COVID19 Policy • Risk Assessment • Reserves Policy <p>All the charity membership that works with the youth team or in schools etc have an enhanced DBS check carried out on them. They also receive regular Safeguarding training.</p>
---	--

Section C Objectives and activities

<p>Summary of the objects of the charity set out in its governing document</p>	<p>The advancement of the Christian faith using puppetry and creative arts, working with churches, schools and communities. Developing the skills of both the youth and adult puppet teams through training and teamwork. To present secular educational puppetry presentations working with schools and educational establishments.</p>
---	--

Summary of the main activities undertaken for the public benefit in relation to these objects (include within this section the statutory declaration that trustees have had regard to the guidance issued by the Charity Commission on public benefit)

Our three puppet teams have had a productive year with new members joining two of our teams to enable them to further expand their work.

Our Big Hands adult team completed two 'tours' this year in the weeks leading up to Easter and Christmas visiting schools and care homes with their presentation.

Our PSHE Schools Project team (personal, social, health and economic) have been working with schools all year to put on presentations on social issues like Drugs and Lying.

Our youth team this year have performed at three different outdoor community events, one event attended by over 5,000 people.

The trustees have had regard to the guidance issued by the Charity Commission on public benefit.

Additional details of objectives and activities (Optional information)

The charity has no paid staff and is run totally by volunteers. The trustees rely on the commitment of these volunteers to develop and grow the work of the charity.

We do not charge for the work we do so rely on donations and grants to support the charity.

We do not supply grants or have an investment policy.

You may choose to include further statements, where relevant, about:

- policy on grantmaking;
- policy programme related investment;
- contribution made by volunteers.

Summary of the main achievements of the charity during the year

As we have three different teams, we have summarised our activities during 2022 by team activities.

Big Hands Adult Team

The team completed both their Easter and Christmas schedule of performances during the year. Unfortunately, two weeks of the Easter presentations had to be cancelled as some of the team went down with COVID. During these performances, they visited 22 schools and performed to over 5,000 people in schools, care homes and churches. During the year we welcomed one new member to the team.

PSHE Schools Project

This team put on presentations throughout the year on social issue topics. This year they have visited 29 schools to cover a presentation on one of the following topics. Road Safety, Lying, Drugs, All Change, Teasing and Bullying.

Little Hands Youth Team

This team has continued to grow this year with four new members joining the team. Unfortunately, two members of the team left during the year, one going off to university.

The team have performed at three different outdoor events during the year to support community events. One of the Fun Days they participated in was attended by over 5,000 people.

Funding

We received a grant from the Tesco Blue token scheme in late November for £500 to enable us to purchase some new style puppets. These will be used to enhance the School Project presentations.

Brief statement of the charity's policy on reserves

We have a reserves policy in place to give an increased level of financial security to the work of the charity. During the year we have not needed to use this reserve.

The amount for the reserve has been set at a level to cover fixed monthly costs such as rent and our average monthly essential operating costs for a three month period. The value was then adjusted to allow for regular monthly giving which the charity receives.

Considering all these factors, the reserve fund value has been set as £2,000. This amount is held in our bank account as unrestricted funds.

The reserve fund would be used to cover unexpected costs that have not been budgeted for, like replacing failed equipment, repairs to the van or to cover a drop in donations, so the charity can continue to operate.

Details of any funds materially in deficit

None

Further financial review details (Optional information)

You may choose to include additional information, where relevant about:

- the charity's principal sources of funds (including any fundraising);
- how expenditure has supported the key objectives of the charity;
- investment policy and objectives including any ethical investment policy adopted.

The main source of funding for the charity during 2022 was from donations. 37% of the donations we receive are from regular monthly donations. The remaining 63% is made up of 1 off donations from either schools, churches or other organisations and some individuals. On some of the personal donations we are able to claim Gift Aid.

We received a grant for £500.00 from the Tesco Blue Token Scheme to cover the cost of purchasing some new style puppets for our PSHE Schools Project team. As the grant was received late in 2022 it will be spent in 2023.

The donations and grants we have received during the year have enabled the charity to offer performances and activities to achieve the charity's objectives.

During the year 2022, Receipts were £11,437 and payments were £10,373, giving a net increase of £1,064. Total carried forward £6,329.

We do not have an investment policy.

Section F

Other optional information

We continue to look for new members for our puppet teams. This year we have 1 new adult member and 4 new youth team members. We have some activities planned for 2023 to hopefully get some other new members.

The storage unit, that we started to use in June 2021 we continue to use, but it is hoped that we can find a more suitable unit in the future. This would enable us to store all our equipment easier and if it was big enough to be able to rehearse there.

Section G

Declaration

The trustees declare that they have approved the trustees' report above.

Signed on behalf of the charity's trustees

Signature(s)	Full name(s)	Position (eg Secretary, Chair, etc)
<i>N Eyles</i>	Nigel John Eyles	Chair
<i>Cary Joyce</i>	Cary Elizabeth Joyce	Trustee

Date *02/05/2023*



Receipts and payments accounts

CC16a

For the period from	1 Jan 22	To	31 Dec 22
---------------------	----------	----	-----------

Section A Receipts and payments

	A1 Receipts	Notes	Unrestricted funds to the nearest £	Restricted funds to the nearest £	Endowment funds to the nearest £	Total funds to the nearest £	Last year to the nearest £
Donations - Monthly	1		3,413	-	-	3,413	2,978
Donations	2		5,790	-	-	5,790	2,816
Gift Aid Rebate	3		568	-	-	568	477
Hall Hire	4		769	-	-	769	734
Team Clothing	5		54	-	-	54	104
Adopt a Puppet	6		85	-	-	85	50
Trips and Outings	7		94	-	-	94	20
Amazon Smile	8		48	-	-	48	35
Easy Fundraising	8		23	-	-	23	16
Activity Supplies	9		37	-	-	37	23
Storage	10		-	-	-	-	32
Grant	11		-	500	-	500	620
Merchandise	12		58	-	-	58	-
			-	-	-	-	-
Sub total (Gross income for AR)			10,937	500	-	11,437	7,904

A2 Asset and investment sales, (see table).

	Notes	Unrestricted funds to the nearest £	Restricted funds to the nearest £	Endowment funds to the nearest £	Total funds to the nearest £	Last year to the nearest £
		-	-	-	-	-
Sub total		-	-	-	-	-
Total receipts		10,937	500	-	11,437	7,904

A3 Payments

Storage	10	5,132	-	-	5,132	4,147
Hall Hire	4	1,955	-	-	1,955	355
Puppet Van	13	1,360	-	-	1,360	1,096
Insurance	14	688	-	-	688	476
Administration	15	296	-	-	296	198
Activity Supplies	9	152	-	-	152	60
Bank Charges	16	94	-	-	94	-
Trips and Outings	7	77	-	-	77	30
Testing	17	65	-	-	65	60
Team Clothing	5	54	-	-	54	54
DBS Checks	18	48	-	-	48	108
Training	19	40	-	-	40	200
Travel Expenses	20	30	-	-	30	-
Refreshments	21	27	-	-	27	14
Miscellaneous	22	18	-	-	18	66
COVID-19	23	18	-	-	18	136
Adopt a Puppet	9	-	-	-	-	-
Outreach		-	-	-	-	40
		-	-	-	-	-
Sub total		10,055	-	-	10,055	7,039

A4 Asset and investment purchases, (see table)

Equipment		182	-	-	182	563
Puppets		22	-	-	22	682
Props and Scenery		114	-	-	114	263
		-	-	-	-	-
Sub total		318	-	-	318	1,508

Total payments

		10,373	-	-	10,373	8,547
--	--	---------------	----------	----------	---------------	--------------

Net of receipts/(payments)

		564	500	-	1,064	643
A5 Transfers between funds		-	-	-	-	-
A6 Cash funds last year end		5,265	-	-	5,265	5,908
Cash funds this year end		5,829	500	-	6,329	5,265

Section B Statement of assets and liabilities at the end of the period

Categories	Details	Unrestricted funds to nearest £	Restricted funds to nearest £	Endowment funds to nearest £
B1 Cash funds	Cash at Bank	7,449	500	-
	Cheques not Cashed	1,620	-	-
	Money not Banked	-	-	-
Total cash funds <small>(agree balances with receipts and payments account(s))</small>		5,829	500	-

Details	Unrestricted funds to nearest £	Restricted funds to nearest £	Endowment funds to nearest £
None	-	-	-
	-	-	-
	-	-	-
	-	-	-
	-	-	-

Details	Fund to which asset belongs	Cost (optional)	Current value (optional)
None		-	-
		-	-
		-	-
		-	-
		-	-

Details	Fund to which asset belongs	Cost (optional)	Current value (optional)
Peugeot Expert Van	Unrestricted	-	-
Puppets	Unrestricted	-	-
Staging	Unrestricted	-	-
Props and Scenery	Unrestricted	-	-
Audio, Visual & Lighting Equipment	Unrestricted	-	-
Outdoor Puppetry Equipment	Unrestricted	-	-
		-	-
		-	-
		-	-

Details	Fund to which liability relates	Amount due (optional)	When due (optional)
None		-	
		-	
		-	
		-	
		-	

B4 Assets retained for the charity's own use

B5 Liabilities

Signed by one or two trustees on behalf of all the trustees

Signature 	Print Name Nigel John Eyras
	Cary Elizabeth Joyce
Date of approval 02/05/23	2-05-23

Accounts Notes

Notes	Comments
1	Donations – Monthly We receive £294.00 a month as regular monthly donations via standing order.
2	Donations During the year we received a total of 40 donations from schools, Churches, etc and individuals. Some making more than one donation during the year.
3	Gift Aid Rebate Several of the personal donations we received we are able to claim back 25% Gift Aid on.
4	Hall Hire This covers the cost of hiring St Francis Church for rehearsals for Big Hands and Little Hands teams. Each team contribute towards the costs of the hire. The invoices for the end of 2021 had not been received before year end resulting in a higher receipt to payment value being shown.
5	Team Clothing The puppet team's polo shirts and hoodies, the volunteers wear, they pay for themselves.
6	Adopt a Puppet This is a scheme when you can adopt one of our puppets for a year. There is also the option of naming a puppet.
7	Trips and Outings This covered the cost of taking our Little Hands youth team to Crazy Golf and Aeroball, during the year.
8	Amazon Smile / Easy Fundraising We are now registered with both Amazon Smile and Easy Fundraising so receive a small donation when people make purchases that are linked to the charity.
9	Activity Supplies This covers the cost of running different activities organised for our Little Hands youth team during their rehearsals
10	Storage This covers the cost of us hiring a unit to store all our equipment. The monthly cost increased towards the end of the year and is now £482.81 per month.
11	Grant We received a grant from the Tesco Blue Token scheme which is shown as restricted funds as it will be used to purchase some new style puppets for the Project Team. We received the grant at the end of November so it will be spent in 2023.
12	Merchandise We have some branded pens, notebooks keyrings etc that we sold during the year.
13	Puppet Van This covers the annual cost of running the puppet van, including diesel.
14	Insurance This covers the liability insurance needed for the charity and the equipment insurance. This cost has increased this year.
15	Administration This covered the cost of running the charity, for example stationary, stamps, printer ink etc. It also includes the cost of booking the hall for the AGM.
16	Bank Charges This is a new charge for 2022 as HSBC now charge £5.00 a month for having an account with them. They now also charge for every cheque we bank or cash we pay into the bank.
17	Testing Covers the annual PAT testing of all the puppet groups electrical equipment
18	DBS Checks All new adult puppeteers need to have an enhanced DBS check when they join. These are then renewed every 3 years.
19	Training We arrange external safeguarding training for the puppet team every other year. This cost is for the hall hire for the training completed in 2021.

20	Travel Expenses This covers the fuel cost of visiting venues that are outside of our local area. Local area venue we do cover travel expenses for.
21	Refreshments This is for our rehearsals for of all our Little Hands Team.
22	Miscellaneous For these one off costs that fall outside the other categories.
23	COVID-19 Covers the cost of hand gel, face masks, cleaner etc we have needed to purchase this year, so that when we have been able to meet, it could be done safely.

General

- The charity's accounts are receipts and payments accounts.
- All values are rounded to the nearest whole £.



**CHARITY COMMISSION
FOR ENGLAND AND WALES**

**Independent examiner's
report on the accounts**

Section A

Independent Examiner's Report

**Report to the trustees/
members of**

Praizin' Hands Puppet Group

**On accounts for the year
ended**

31st December 2022

**Charity no
(if any)**

1186981

Set out on pages

9 to 12

(Remember to include the page numbers of additional sheets)

I report to the trustees on my examination of the accounts of the above charity ("the Trust") for the year ended 31/12/2022.

**Responsibilities and
basis of report**

As the charity trustees of the Trust, you are responsible for the preparation of the accounts in accordance with the requirements of the Charities Act 2011 ("the Act").

I report in respect of my examination of the Trust's accounts carried out under section 145 of the 2011 Act and in carrying out my examination, I have followed the applicable Directions given by the Charity Commission under section 145(5)(b) of the Act.

I have completed my examination. I confirm that no material matters have come to my attention (either than that dislosed below *) in connection with the examination which gives me cause to believe that in, any material respect:

- accounting records were not kept in accordance with section 130 of the Act or
- the accounts do not accord with the accounting records

I have no concerns and have come across no other matters in connection with the examination to which attention should be drawn in order to enable a proper understanding of the accounts to be reached.

** Please delete the words in the brackets if they do not apply.*

**Independent
examiner's statement**

Signed:

A. P. Nicholas

Date:

7th June 2023

Name:

Alan Nicholas

**Relevant professional
qualification(s) or body
(if any):**

Chartered Accountant (ICAEW)

Address:

15A Wellands Road

Lyndhurst, Hampshire

SO43 7AB

PRAIZIN' HANDS PUPPET GROUP

England & Wales - Charity number 1186981

Accounts



PRAIZIN' HANDS PUPPET GROUP

Trustees' Annual Report and

Financial Statement

Year ending 31st December 2021

Charity No: 1186981

Introduction

This year has not been without its challenges as we started the year in lockdown and we ended the year with reduced restrictions, still having to cancel performances because of COVID19. It has been great finally being able to get back to working in schools for the second half of the year. The schools have been very pleased to have us back. Unfortunately, many of the events our Little Hands youth team would have been involved in during the year did not happen, because of the restrictions.

One of the biggest challenges we started the year with was to find a location to store all our puppet equipment. This was due to the use of the two locations we had been using for storage coming to an end. With a lot of work by the trustees we managed to secure the use of a building where we can store all our equipment, and this has allowed us to have all our equipment under a single roof for the first time.

Overall, the year has been very positive as we have overcome the challenges facing us. We have two new adult puppeteers that have joined us, and they have soon settled into the team. A number of bookings for 2022 have already been received which is a sign that things are returning to normal.

In April, Wendy stepped down as a trustee and I thank her for her input over the previous 18 months. At our AGM in May, Maz was elected as a new trustee and the other trustees had their appointments confirmed. I would like to thank all the trustees for their support they have given to me and the charity.

The following pages of the report give a summary of the activities we have achieved during 2021 and also our financial position as at the end of the year.

I am looking forward to 2022 when we can focus on live puppet performances again and start to visit the many schools, churches, care homes etc that we have not managed to visit over the last couple of years.

Nigel Eyres

Chair of Trustees

Contents:

- Trustees' Annual Report
- Receipts and Payments Accounts
- Statement of Assets and Liabilities
- Notes to the Accounts
- Independent Examiner's Report



Trustees' Annual Report for the period

Period start date **From** 01 01 2021 **To** Period end date 31 12 2021

Section A

Reference and administration details

Charity name Praizin' Hands Puppet Group

Other names charity is known by

Registered charity number (if any) 1186981

27 Tormead
 Hythe
 Southampton, Hampshire
 Postcode SO45 5AW

Names of the charity trustees who manage the charity

	Trustee name	Office (if any)	Dates acted if not for whole year	Name of person (or body) entitled to appoint trustee (if any)
1	Nigel John Eyres	Chair		Charity membership
2	Cary Elizabeth Joyce			Charity membership
3	Wendy Ann Davis		Until: 01.04.21	Charity membership
4	Colin Stephen Riddout			Charity membership
5	Beverly Jayne Eyres			Charity membership
6	Maryanne Timandra Isobella Kitcherside		From: 23.05.21	Charity membership
7				
8				
9				
10				
11				
12				
13				
14				
15				

Names of the trustees for the charity, if any, (for example, any custodian trustees)

Name	Dates acted if not for whole year

Names and addresses of advisers (Optional information)

Type of adviser	Name	Address

Name of chief executive or names of senior staff members (Optional information)

--

Section B Structure, governance and management

Description of the charity's trusts

Type of governing document	Constitution – Issue 02 - Released 17.12.2019
How the charity is constituted	Charitable Incorporated Organisation (CIO)
Trustee selection methods	Elected by membership at the AGM

Additional governance issues (Optional information)

<p>You may choose to include additional information, where relevant, about:</p> <ul style="list-style-type: none"> • policies and procedures adopted for the induction and training of trustees; • the charity's organisational structure and any wider network with which the charity works; • relationship with any related parties; • trustees' consideration of major risks and the system and procedures to manage them. 	<p>We have the following policies in place that are reviewed annually by the trustees.</p> <ul style="list-style-type: none"> • Health and Safety Policy • Safeguarding Policy • Data Protection Policy • COVID19 Policy • Risk Assessment <p>All the charity membership that works with the youth team or in schools etc have a DBS check carried out on them. They also receive regular Safeguarding training.</p>
---	---

Section C Objectives and activities

<p>Summary of the objects of the charity set out in its governing document</p>	<p>The advancement of the Christian faith using puppetry and creative arts, working with churches, schools and communities. Developing the skills of both the youth and adult puppet teams through training and teamwork. To present secular educational puppetry presentations working with schools and educational establishments.</p>
---	--

Summary of the main activities undertaken for the public benefit in relation to these objects (include within this section the statutory declaration that trustees have had regard to the guidance issued by the Charity Commission on public benefit)

Our three puppet teams started the year still unable to meet in person because of the COVID19 restrictions in place. We still met via Zoom so that we could continue our charities objectives, recording material that we would share via YouTube. As soon as the restrictions had been lifted, we started to meet in person again.

Our adult team recorded an Easter presentation that was shared with local schools via YouTube. In the weeks leading up to Christmas the team managed to perform live again in local schools and at an outdoor community event.

Our PSHE Schools Project team started the year sharing the presentations via YouTube. Then later in the year managed to return to visit schools with our Friendships presentation for KS1.

Our youth team has continued to meet during the year, the majority of the time in person. This has enabled us to support and encourage the team and improve their puppetry skills. They have recorded some songs that have been shared on our YouTube channel.

The trustees have had regard to the guidance issued by the Charity Commission on public benefit

Additional details of objectives and activities (Optional information)

The charity has no paid staff and is run totally by volunteers. The trustees rely on the commitment of these volunteers to develop and grow the work of the charity.

We do not supply grants or have an investment policy.

You may choose to include further statements, where relevant, about:

- policy on grantmaking;
- policy programme related investment;
- contribution made by volunteers.

Summary of the main achievements of the charity during the year

We started the year recording our performances and then sharing them via YouTube, until we could return to 'live' performances in the second half of the year.

Our Easter presentation on YouTube has been viewed 273 times. It was shared with schools, churches, care homes and youth groups, so the actual viewing figures would be a lot higher.

During November and December our adult puppet team visited 7 schools with our Christmas presentation reaching over 1,625 children and staff. Unfortunately, we did not complete all the planned performances because of COVID19 which resulted in 4 performances having to be cancelled. This presentation was also performed 3 times outdoors at a community event for the public.

Our youth team recorded a song called 'Love Is Shown by What We Do' which we shared on YouTube and entered it into a national competition where the team won third place. This team also recorded a song using dowel rods which was also put on YouTube.

The PSHE schools project team filmed an 'Internet Safety' presentation for Key Stage 1 pupils and it was premiered on YouTube to share with local schools who all watched it simultaneously on 2 different occasions. It has had 110 views, but many of these views would have been to whole classes.

The song 'We All Have Differences' was also shared to schools via YouTube and this has been used in several schools and has been viewed 159 times with many classes watching it together.

The PSHE schools project team was back to 'live' performances by October and visited 8 different schools with our 'Friendships' presentation which was watched by over 1,300 children and staff. Many teachers particularly valued this presentation as they had expressed their concerns to us about children not knowing how to make friends or share, due to the lockdown when they were not allowed to mix with others.

The song 'How are you feeling' has had over 2,190 views on YouTube in addition to being part of our 'Returning to school after lockdown' DVD which was produced in 2020.

In September we organised some Safeguarding training for all the members who help with our youth team and/or visit schools.

Brief statement of the charity's policy on reserves

The trustees have put a reserves policy in place during the year, which will be reviewed annually.

The amount for the reserve fund has been set at a level to cover fixed monthly costs such as rent and our average monthly essential operating costs for a three month period. The value was then adjusted to allow for regular monthly giving that the charity receives.

Considering all these factors the reserve fund value has been set as £2,000. This amount is held in our bank account as unrestricted funds.

The reserve fund would be used to cover unexpected costs that have not been budgeted for, like replacing failed equipment or to cover a drop in donations, so the charity can continue to operate.

Details of any funds materially in deficit

None

Further financial review details (Optional information)

You may choose to include additional information, where relevant about:

- the charity's principal sources of funds (including any fundraising);
- how expenditure has supported the key objectives of the charity;
- investment policy and objectives including any ethical investment policy adopted.

The main source of funding for the charity during 2021 was from donations. 51% of the donations we receive are from regular monthly donations that increased from £209.00 in January to £299.00 in December. The remaining 49% is made up of 1 off donations from either schools, churches or other organisations and some individuals.

We received a grant for £620.35 from The Listeners Trust to cover the cost of purchasing additional puppets and screens to allow us to rehearse safely because of COVID19.

The donations and grants we have received during the year have enabled the charity to offer performances and activities to achieve the charities objectives.

During the year 2021, Receipts were £7,904 and Payments were £8,547. giving a net deficit of £643. Total carried forward £5,265

We do not have an investment policy.

Section F

Other optional information

We started the year in lockdown because of COVID19 and ended the year with reduced restrictions as things start to get back to normal. COVID19 has affected us when team members have tested positive, and performances have been cancelled.

We have two new adult puppeteers that have joined during 2021. During 2022 we plan to recruit some more adult puppeteers and also some new members to our youth team, as well as stage crew.

In June we managed to secure the use of a building to use for storing all our equipment. This move to storing all our equipment in one central location has been a great benefit for the second half of the year.

Section G

Declaration

The trustees declare that they have approved the trustees' report above.

Signed on behalf of the charity's trustees

Signature(s)		
<i>N Egres</i>		<i>Cary Joyce</i>
Full name(s)	Nigel John Eyres	Cary Elizabeth Joyce
Position (eg Secretary, Chair, etc)	Chair	Trustee
Date	20/5/22	



Receipts and payments accounts

CC16a

For the period	1. Jan. 21	To	31. Dec. 21
from			

Section A Receipts and payments

	Unrestricted funds	Restricted funds	Endowment funds	Total funds	Last year
	to the nearest £	to the nearest £	to the nearest £	to the nearest £	to the nearest £
A1 Receipts					
Donations - Monthly	2,978	-	-	2,978	2,438
Donations	2,816	-	-	2,816	5,478
Gift Aid Rebate	477	-	-	477	575
Hall Hire	734	-	-	734	678
Team Clothing	104	-	-	104	358
Adopt a Puppet	50	-	-	50	225
Tips and Outings	20	-	-	20	81
Amazon Smile	35	-	-	35	7
Easy Fundraising	16	-	-	16	-
Activity Supplies	23	-	-	23	-
Storage	32	620	-	32	-
Grant	-	-	-	620	-
	-	-	-	-	-
Sub total (Gross income for AR)	7,283	620	-	7,904	9,780

A2 Asset and investment sales, (see table).

	Unrestricted funds	Restricted funds	Endowment funds	Total funds	Last year
	to the nearest £	to the nearest £	to the nearest £	to the nearest £	to the nearest £
Sub total	-	-	-	-	-
Total receipts	7,283	620	-	7,904	9,780

A3 Payments

Puppet Van	1,096	-	-	1,096	1,050
Hall Hire	355	-	-	355	515
Team Clothing	54	-	-	54	841
Adopt a Puppet	-	-	-	-	35
Tips and Outings	30	-	-	30	81
Insurance	476	-	-	476	740
Outreach	40	-	-	40	582
Administration	198	-	-	198	271
COVID-19	136	-	-	136	128
Travel Expenses	-	-	-	-	67
DBS Checks	108	-	-	108	60
Refreshments	14	-	-	14	35
Donation	-	-	-	-	10
Miscellaneous	66	-	-	66	32
Activity Supplies	60	-	-	60	-
Storage	4,147	-	-	4,147	-
Testing	60	-	-	60	-
Training	200	-	-	200	-
	-	-	-	-	-
	-	-	-	-	-
Sub total	7,039	-	-	7,039	4,448

A4 Asset and investment purchases, (see table)

Equipment	367	196	-	563	596
Puppets	291	391	-	682	324
Props and Scenery	230	33	-	263	199
	-	-	-	-	-
	-	-	-	-	-
Sub total	887	620	-	1,508	1,118

Total payments

	7,926	620	-	8,547	5,565
--	--------------	------------	----------	--------------	--------------

Net of receipts/(payments)

	643	-	-	643	4,214
A5 Transfers between funds	-	-	-	-	-
A6 Cash funds last year end	5,908	-	-	5,908	1,694
Cash funds this year end	5,265	-	-	5,265	5,908

Section B Statement of assets and liabilities at the end of the period

Categories

B1 Cash funds

Details	Unrestricted funds to nearest £	Restricted funds to nearest £	Endowment funds to nearest £
Cash at Bank	5,682	-	-
Cheques not Cashed	417	-	-
Money not Banked	-	-	-
Total cash funds <small>(agree balances with receipts and payments account(s))</small>	5,265	-	-

B2 Other monetary assets

Details	Unrestricted funds to nearest £	Restricted funds to nearest £	Endowment funds to nearest £
None	-	-	-
	-	-	-
	-	-	-
	-	-	-
	-	-	-

B3 Investment assets

Details	Fund to which asset belongs	Cost (optional)	Current value (optional)
None		-	-
		-	-
		-	-
		-	-
		-	-

B4 Assets retained for the charity's own use

Details	Fund to which asset belongs	Cost (optional)	Current value (optional)
Peugeot Expert Van	Unrestricted	-	-
Puppets	Unrestricted	-	-
Staging	Unrestricted	-	-
Props and Scenery	Unrestricted	-	-
Audio, Visual & Lighting Equipment	Unrestricted	-	-
Outdoor Puppetry Equipment	Unrestricted	-	-
		-	-
		-	-
		-	-

B5 Liabilities

Details	Fund to which liability relates	Amount due (optional)	When due (optional)
None		-	
		-	
		-	
		-	
		-	

Signed by one or two trustees on behalf of all the trustees

Signature	Print Name	Date of approval
<i>N Eyres</i>	Nigel John Eyres	20/5/22
<i>Katy Joyce</i>	Katy Elizabeth Joyce	20/5/22

Accounts Notes

Notes	Comments
1	Donations – Monthly We receive a number of regular monthly donations via standing order. These increased during the year and now equal £299.00 per month
2	Donations During the year we received a total of 22 donations from schools, Churches, etc and individuals. Some making more than one donation during the year.
3	Hall Hire This covers the cost of hiring St Francis Church for rehearsals for Big Hands and Little Hands teams. Each team contribute towards the costs of the hire. The invoices for the end of the year had not been received before year end resulting in a higher receipt to payment value being shown.
4	Team Clothing The puppet team's polo shirts and hoodies, the volunteers wear, they pay for themselves. The receipt value is higher as it covers clothing purchased at the end of 2020.
5	Trips and Outings This covered the cost of taking the Little Hands youth team Go Karting in July. Unfortunately, a couple of people could not attend because of COVID, resulting in a shortfall.
6	Amazon Smile / Easy Fundraising We are now registered with both Amazon Smile and Easy Fundraising so receive a small donation when people make purchases that are linked to the charity.
7	Activity Supplies This covers the cost of running different activities organised for our Little Hands youth team during their rehearsals
8	Storage We now hire a unit to store all the puppet equipment, which started in June. The receipt of £32 was a refund for the initial Business Rates payment we made as we are exempt from paying it due to being a charity.
9	Grant This grant was from The Listeners Trust, and it is shown as restricted funds as it is to cover specific purchases.
10	Insurance This covers the liability insurance needed for the charity and the equipment insurance.
11	Outreach This covers the cost of using Ferry Crofts Scout Camp site to film two puppet songs that we put on YouTube.
12	Administration This covered the cost of running the charity, for example stationary, stamps, printer ink etc. It also includes the cost of booking the hall for the AGM
13	COVID-19 Covers the cost of hand gel, gloves, face masks, cleaner etc we have needed to purchase this year, so that when we have been able to meet, it could be done safely.
14	Testing Covers the annual PAT testing of all the puppet groups electrical equipment
15	Training Covers the cost of the Safeguarding training for the whole puppet team.

General

- The charity's accounts are receipts and payments accounts.
- All values are rounded to the nearest whole £.



**Report to the trustees/
members of**

Praizin' Hands Puppet Group

**On accounts for the year
ended**

31st December 2021

**Charity no
(if any)**

1186981

Set out on pages

9 to 11

I report to the trustees on my examination of the accounts of the above charity ("the Trust") for the year ended 31/12/2020.

**Responsibilities and
basis of report**

As the charity trustees of the Trust, you are responsible for the preparation of the accounts in accordance with the requirements of the Charities Act 2011 ("the Act").

I report in respect of my examination of the Trust's accounts carried out under section 145 of the 2011 Act and in carrying out my examination, I have followed the applicable Directions given by the Charity Commission under section 145(5)(b) of the Act.

**Independent
examiner's statement**

I have completed my examination. I confirm that no material matters have come to my attention ~~together than~~ that disclosed below ~~→~~ in connection with the examination which gives me cause to believe that in, any material respect:

- accounting records were not kept in accordance with section 130 of the Act or
- the accounts do not accord with the accounting records

I have no concerns and have come across no other matters in connection with the examination to which attention should be drawn in order to enable a proper understanding of the accounts to be reached.

** Please delete the words in the brackets if they do not apply.*

Signed:

A.P. Nicholas

Date:

13/06/22

Name:

ALAN NICHOLAS

**Relevant professional
qualification(s) or body
(if any):**

CHARTERED ACCOUNTANT (ICAEW)

Address:

15A WELLANDS ROAD,

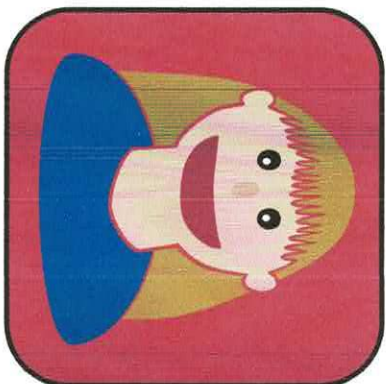
LYNHURST, HAMPSHIRE

SO43 7AB.

PRAIZIN' HANDS PUPPET GROUP

England & Wales - Charity number 1186981

Accounts



PRAIZIN' HANDS PUPPET GROUP

Trustees' Annual Report and

Financial Statement

Year ending 31st December 2020

Charity No: 1186981

Introduction

We became a charity on 17 December 2019 having previously been part of Cornerstone Hythe URC Church, for the previous 16 years. The move to become a charity was made after careful consideration by the puppet group members and with the support of the Church. We had grown over these 16 years and expanded the activities of the puppet group in the community working with schools, churches, and care homes etc. The move to register as a charity was made to further develop our work and to enable us to collaborate with other local Churches.

The year has not been the year we expected but that is the same for everyone in the UK and further afield. We have needed to evolve how we work to be able to continue with the aims of the charity and still be able to offer puppet presentations. We started the year as normal and were able to do the presentations in person for the first 3 months of the year. However, when the first lockdown started, we had to turn to filming our performances and putting them onto DVDs and our YouTube channel.

The following pages of the Trustees Annual Report give a summary of what we have achieved during the year and a summary of our finances over this period.

I would like to thank my fellow trustees for all their effort and time they have given to the charity, my apologies for the late-night meetings! I would also like to thank all our puppeteers and stage crew for all their efforts during the year that has enabled us to continue our work. And finally, I would like to thank all those who support our work, whether it be by words of encouragement or building props and scenery or with financial gifts.

I look forward to the year ahead, as we get back to normal and start to be allowed to visit different venues again to perform to further spread the work of the Puppet Group in our community.

Nigel Eyres

Chair of Trustees

Contents:

- Trustees' Annual Report
- Receipts and Payments Accounts
- Statement of Assets and Liabilities
- Notes to the Accounts
- Independent Examiner's Report



Trustees' Annual Report for the period

From	Period start date	17	12	2019	To	Period end date	31	12	2020
------	-------------------	----	----	------	----	-----------------	----	----	------

Section A Reference and administration details

Charity name Praizin' Hands Puppet Group

Other names charity is known by

Registered charity number (if any) 1186981

27 Tormead
 Hythe
 Southampton, Hampshire
 Postcode SO45 5AW

Names of the charity trustees who manage the charity

	Trustee name	Office (if any)	Dates acted if not for whole year	Name of person (or body) entitled to appoint trustee (if any)
1	Nigel John Eyres	Chair		Charity membership
2	Cary Elizabeth Joyce			Charity membership
3	Wendy Ann Davis			Charity membership
4	Colin Stephen Ridout			Charity membership
5	Beverly Jayne Eyres			Charity membership
6				
7				
8				
9				
10				
11				
12				
13				
14				
15				

Names of the trustees for the charity, if any, (for example, any custodian trustees)

Name	Dates acted if not for whole year

Names and addresses of advisers (Optional information)

Type of adviser	Name	Address

Name of chief executive or names of senior staff members (Optional information)

--

Section B Structure, governance and management

Description of the charity's trusts

Type of governing document <i>(eg. trust deed, constitution)</i>	Constitution – Issue 02 - Released 17.12.2019
How the charity is constituted <i>(eg. trust, association, company)</i>	Charitable Incorporated Organisation (CIO)
Trustee selection methods <i>(eg. appointed by, elected by)</i>	Elected by membership at the AGM

Additional governance issues (Optional information)

<p>You may choose to include additional information, where relevant, about:</p> <ul style="list-style-type: none"> • policies and procedures adopted for the induction and training of trustees; • the charity's organisational structure and any wider network with which the charity works; • relationship with any related parties; • trustees' consideration of major risks and the system and procedures to manage them. 	<p>We have the following policies in place that are reviewed annually.</p> <ul style="list-style-type: none"> • Health and Safety Policy • Safeguarding Policy • Data Protection Policy • Risk Assessment <p>As a result of the COVID-19 pandemic from March onwards we needed to implement an updated Health and Safety policy and risk assessments to ensure we applied to the latest government guidelines and safe working practices.</p> <p>All the charity membership who work with the youth team or in schools etc have a DBS check carried out on them.</p>
---	--

Section C Objectives and activities

<p>Summary of the objects of the charity set out in its governing document</p>	<p>The advancement of the Christian faith using puppetry and creative arts, working with churches, schools and communities. Developing the skills of both the youth and adult puppet teams through training and teamwork. To present secular educational puppetry presentations working with schools and educational establishments.</p>
---	--

Summary of the main activities undertaken for the public benefit in relation to these objects (include within this section the statutory declaration that trustees have had regard to the guidance issued by the Charity Commission on public benefit)

We have three separate puppet teams that work with different parts of the community. During 2020 we have needed to review the activities of these teams to comply with the COVID-19 restrictions, but still enabling us to be of benefit and continue our charities objectives.

The adult team put on performances in local schools at Easter and later in the year produced a Christmas DVD to send to schools, care homes and churches. Some of the members of this team also performed puppet songs that we filmed for YouTube.

Our PSHE Schools Project team visited schools in the first couple of months of 2020 to put on presentations on 6 different topics. Over the summer they produced a 'Returning to school after lockdown' DVD which was given to primary schools for when they returned in September.

The youth team for 11 to 18 year olds has continued to meet during 2020, either in person or over Zoom. Unfortunately, they have not been able to do any performances during the year. We continued to meet to support the team and their mental health, as they continued to be home schooled.

The trustees have had regard to the guidance issued by the Charity Commission on public benefit

Additional details of objectives and activities (Optional information)

The charity is run totally by volunteers and relies on their commitment and support to enable the trustees to develop the charity and grow the work we do.

We do not supply grants or have an investment policy.

You may choose to include further statements, where relevant, about:

- policy on grantmaking;
- policy programme related investment;
- contribution made by volunteers.

Summary of the main achievements of the charity during the year

During one week before Easter, we visited 5 schools and performed our presentation to 1020 children and teachers at these schools. We had bookings for the 4 weeks leading up to Easter but 3 weeks had to be cancelled as we started the first lockdown.

During January and February our PSHE Schools project team visited 6 schools with our different presentations which were watched by 780 children and staff.

In September, we supplied 25 'Returning to school after lockdown' DVD's, that we had recorded over the summer, to our local primary schools to support them as the children returned to school after their extended break.

In December, we produced 140 'Joy to the World' DVD's which told the Christmas story. These had been recorded by our Big Hands adult team in a barn at a local farm, as well as in the forest. These DVD were sent to different schools, care homes and Churches around the country.

As a result of the COVID-19 restrictions and not being able to perform live, we started a YouTube channel. During the year we have recorded 28 videos, that have also been available on our Facebook page. The links to these videos have been sent to schools, care homes, Churches, and other groups, many who have forwarded the link on. Combined they have been watched over 11,425 times.

We have started a quarterly newsletter to enable us to share news about the work of the charity. These are also available to download from our new website.

Section E

Financial review

Brief statement of the charity's policy on reserves

During the reported period we have been able to build a designated reserve of £1,430.00 towards future storage costs for our equipment. This is as we have managed to secure free storage over this period, but this will come to an end in June 2021.

This is the first year we have been registered as a charity, in our own right. Prior to this, for the last 16 years, we have been part of a Church Charity so have not needed to have our own reserve policy in place.

During this year, we have managed to increase the regular monthly donations we receive and have also received some 1 off donations so that we have been able to maintain a larger balance within our accounts. The percentage of this balance that will be designated to a reserve fund and the policy regarding, it will be defined by the Trustees in 2021.

As the charity's assets include various expensive audio, lighting and sound equipment and also a van we need to have a reserve fund in place to deal with any unexpected failures or repairs to these assets.

Details of any funds materially in deficit

None

Further financial review details (Optional information)

You may choose to include additional information, where relevant about:

- the charity's principal sources of funds (including any fundraising);
- how expenditure has supported the key objectives of the charity;
- investment policy and objectives including any ethical investment policy adopted.

The principal funding source for the charity during the reported period has been from donations. Of the donations we have received, 31% are from regular monthly donations and 69% is from 1 off donations. These 1 off donations have come from either schools, churches or other organisations and some from individuals.

The funding received has enabled us to continue to offer a full range of free performances to meet the charity's objectives, whether that be in person or electronically using DVD's or social media, in the challenging year we have faced, because of all the restrictions. The positive feedback we have received during the year has confirmed the benefit of the puppet groups work.

We do not have an investment policy.

Section F

Other optional information

The challenges of continuing the work of the charity while complying with the COVID-19 restrictions during most of the year has been difficult at times. We have needed to adapt as for most of the year we have been unable to visit venues and perform in person. However, with modern technology we have been able to produce our own DVDs and YouTube videos, so we still have been able to reach our objectives.

The new skills we have needed to learn have given us new options in the future once we get back to 'normal' to reach more people alongside our usual in person performances.

Section G**Declaration**

The trustees declare that they have approved the trustees' report above.

Signed on behalf of the charity's trustees

Signature(s)	<i>N Eyles</i>	<i>Cary Joyce</i>
Full name(s)	Nigel John Eyles	Cary Elizabeth Joyce
Position (eg Secretary, Chair, etc)	Chair	Trustee
Date	20-05-2021	



Receipts and payments accounts

CC16a

For the period	17. Dec. 19	To	31. Dec. 20
from			

Section A Receipts and payments

	Unrestricted funds	Restricted funds	Endowment funds	Total funds	Last year
	to the nearest £	to the nearest £	to the nearest £	to the nearest £	to the nearest £
A1 Receipts					
Notes					
Donations - Monthly	1 2,438	-	-	2,438	-
Donations	2 6,418	-	-	6,418	-
Gift Aid Rebate	575	-	-	575	-
Hall Hire	678	-	-	678	-
Team Clothing	3 368	-	-	368	-
Adopt a Puppet	225	-	-	225	-
Trips and Outings	4 81	-	-	81	-
Amazon Smile	5 7	-	-	7	-
	-	-	-	-	-
Sub total (Gross income for AR)	9,780	-	-	9,780	-
A2 Asset and investment sales, (see table).					
	-	-	-	-	-
	-	-	-	-	-
Sub total	-	-	-	-	-
Total receipts	9,780	-	-	9,780	-

A3 Payments					
Puppet Van	1,060	-	-	1,060	-
Hall Hire	515	-	-	515	-
Team Clothing	3 841	-	-	841	-
Adopt a Puppet	35	-	-	35	-
Trips and Outings	4 81	-	-	81	-
Insurance	6 740	-	-	740	-
Outreach	7 582	-	-	582	-
Administration	8 271	-	-	271	-
COVID-19	9 128	-	-	128	-
Travel Expenses	67	-	-	67	-
DBS Checks	60	-	-	60	-
Refreshments	35	-	-	35	-
Donation	10 10	-	-	10	-
Miscellaneous	32	-	-	32	-
	-	-	-	-	-
	-	-	-	-	-
Sub total	4,448	-	-	4,448	-

A4 Asset and investment purchases, (see table)					
Equipment	596	-	-	596	-
Puppets	324	-	-	324	-
Props and Scenery	199	-	-	199	-
	-	-	-	-	-
	-	-	-	-	-
Sub total	1,118	-	-	1,118	-
Total payments	5,566	-	-	5,566	-
Net of receipts/(payments)	4,214	-	-	4,214	-
A5 Transfers between funds					
A6 Cash funds last year end	1,694	-	-	1,694	-
Cash funds this year end	5,908	-	-	5,908	-

Section B Statement of assets and liabilities at the end of the period

Categories	Details	Unrestricted funds to nearest £	Restricted funds to nearest £	Endowment funds to nearest £
B1 Cash funds	Cash at Bank	5,784	-	-
	Cheques not Cashed	22	-	-
	Money not Banked	146	-	-
	Total cash funds <small>(agree balances with receipts and payments account(s))</small>	5,908	-	-
B2 Other monetary assets	Details			
	None	-	-	-
		-	-	-
		-	-	-
		-	-	-
		-	-	-
B3 Investment assets	Details			
	None	-	-	-
		-	-	-
		-	-	-
		-	-	-
		-	-	-
B4 Assets retained for the charity's own use	Details			
	Peugeot Expert Van	Unrestricted	-	-
	Puppets	Unrestricted	-	-
	Staging	Unrestricted	-	-
	Props and Scenery	Unrestricted	-	-
	Audio, Visual and Lighting Equipment	Unrestricted	-	-
	Outdoor Puppetry Equipment	Unrestricted	-	-
B5 Liabilities	Details			
	None	-	-	-
		-	-	-
		-	-	-

Signed by one or two trustees on behalf of all the trustees

Signature	Print Name	Date of approval
<i>Nigel John Eyres</i>	Nigel John Eyres	20/5/21
<i>Cary Elizabeth Joyce</i>	Cary Elizabeth Joyce	20/5/21

Accounts Notes

Notes	Comments
1	Donations – Monthly During the year, the amount of regular monthly donations received has increased. We now receive £209 per month by standing order direct into our bank account.
2	Donations During the year we received a total of 64 donations from schools, Churches, etc and individuals. Some making more than one donation during the year.
3	Team Clothing The puppet team's polo shirts and hoodies, the volunteers wear, they pay for themselves. As we rebranded the puppet group when we set it up as a charity, the decision was made for the charity to replace everyone's polo shirt, this is reflected in the higher expenses shown.
4	Trips and Outings This covered the cost of taking the Little Hands youth team bowling in January.
5	Amazon Smile We are now registered with Amazon Smile so receive a small donation when people make purchases that are linked to the charity.
6	Insurance This covers the liability insurance needed for the charity and the equipment insurance.
7	Outreach This covers the production of the two different DVDs we produced during the year and the postal charges for sending out the DVDs at Christmas.
8	Administration This covered the cost of running the charity, for example stationary, stamps, printer ink etc.
9	COVID-19 An unexpected cost for this year, it covers hand gel, gloves, face masks, cleaner etc we have needed to purchase this year, so that when we have been able to meet it could be done safely.
10	Donation This was a donation made to cover the cost of attending the Christmas Ideas forum organised by OneWay UK.

General

- The charity's accounts are receipts and payments accounts.
- All values are rounded to the nearest whole £.
- These accounts cover the period from the 17 December 2019, when we registered as a charity to the end of our first full year on the 31 December 2020. Our reporting period for future years will be from 1 January to 31 December.



CHARITY COMMISSION FOR ENGLAND AND WALES

Independent examiner's report on the accounts

Section A

Independent Examiner's Report

Report to the trustees/
members of

Praizin' Hands Puppet Group

On accounts for the year
ended

31st December 2020

Charity no
(if any)

1186981

Set out on pages

9 to 11

(Remember to include the page numbers of additional sheets)

I report to the trustees on my examination of the accounts of the above charity ("the Trust") for the year ended 31/12/2020.

Responsibilities and
basis of report

As the charity trustees of the Trust, you are responsible for the preparation of the accounts in accordance with the requirements of the Charities Act 2011 ("the Act").

I report in respect of my examination of the Trust's accounts carried out under section 145 of the 2011 Act and in carrying out my examination, I have followed the applicable Directions given by the Charity Commission under section 145(5)(b) of the Act.

Independent
examiner's statement

I have completed my examination. I confirm that no material matters have come to my attention (other than that disclosed below *) in connection with the examination which gives me cause to believe that in, any material respect:

- accounting records were not kept in accordance with section 130 of the Act or
- the accounts do not accord with the accounting records

I have no concerns and have come across no other matters in connection with the examination to which attention should be drawn in order to enable a proper understanding of the accounts to be reached.

* Please delete the words in the brackets if they do not apply.

Signed:

A. P. Nicholas

Date:

20-05-2021

Name:

ALAN NICHOLAS

Relevant professional
qualification(s) or body
(if any):

CHARTERED ACCOUNTANT (ICAEW)

Address:

15A WELLANDS ROAD,

LYNDHURST, HAMPSHIRE.

SO43 7AB.