



SOUTH WEST LONDON ISLAMIC SOCIETY

REGISTERED CHARITY NUMBER: 1186937 (registered in England and Wales)

ANNUAL AND FINANCIAL REPORT 2025

(PERIOD 2ND APRIL 2024 – 1ST APRIL 2025)

CONTENTS

	Page
Contents	2
1.0 Introduction	3
2.0 Trustees' Annual Report for the Period	4
Section A - Reference and Administration Details	4
Section B - Structure, Governance and Management	5
Section C – Objectives and Activities	9
Section D – Achievements and Performance	11
Section E - Financial Review	17
Section F – Other Information	19
Section G – Declaration & Statement of Trustees' Responsibilities	20
3.0 Independent Examiner's Report on the Accounts	21
4.0 Annual Accounts for the Period	23

1.0 INTRODUCTION

This is the 2025 annual and financial report of the South West London Islamic Society trustees. It is presented together with the trustees' annual report for the period, independent examiner's report on the accounts and the annual accounts for the period ending 1st April 2025.

2.0 TRUSTEES' ANNUAL REPORT FOR THE PERIOD

Section A	Reference and Administration Details
Period start date	<i>From:</i> 02/04/2024
Period end date	<i>To:</i> 01/04/2025
Charity name	South West London Islamic Society
Registered charity number	1186937 (registered in England and Wales)
Charity's principal address	182 Western Road, London, CR4 3EB
Charity trustees who manage the charity	Tahir Chaudry (Chair) Mohamed Mahamud (Trustee) Bourhan Ali (Trustee) Jason Mitchell (Trustee)
Bankers	<ul style="list-style-type: none"> - HSBC Bank PLC, 117 Balham High Rd, Balham, London, SW12, 9AS - Metro Bank, Clapham Junction, 4-8 St John's Road, Battersea, SW11 1PN
Accountants	Refer to Independent examiner's report on the accounts

TRUSTEES' ANNUAL REPORT FOR THE PERIOD cont.

Section B	Structure, Governance and Management
Type of governing document	Trust deed (dated 01 July 2019)
How the charity is constituted	Trust
Trustee selection methods	As explained in the governing document

Additional governance details

Policies and Procedures

Policies and procedures adopted by the Charity for the induction and training of trustees include:

- Policy Statement
- Diversity
- Role of the board of trustees
- Rules governing the appointment of trustees
- Eligibility to become a trustee
- Process for appointment of trustees
- Expectations of trustees
- Induction programme
- Ongoing support and training
- Review of trustee performance

TRUSTEES' ANNUAL REPORT FOR THE PERIOD cont.

In addition to the above, the Charity has designed, documented, implemented and reviewed (quarterly) the following policies in order to ensure the Charity adheres and operates to a stringent governance and compliance framework:

- Risk management Policy, including activities and spending outside England and Wales
- Investment Policy
- Safeguarding vulnerable beneficiaries Policy
- Conflicting interests Policy
- Volunteer management Policy
- Complaints handling Policy
- Health and Safety Policy
- Financial controls and records Policy
- Zakaat Policy
- Campaigns and political activity policy and procedures
- Bullying and harassment policy and procedures
- Website and Social Media Policy
- Speakers Policy
- Volunteer vetting Policy
- Paying staff Policy
- Privacy Policy (including Data Protection and GDPR)
- Serious incident reporting policy and procedures
- Equality & Diversity Policy
- Trustee Code of Conduct Policy
- Trustee Expenses Policy
- Engaging external speakers at charity events policy and procedures
- Pandemic Planning Policy
- Human Resources Policy
- Office Management Policy
- External relations Policy
- Reserves Policy
- Large legacies and donations policy
- Monitoring expenditure outside England and Wales policy

Organisational Structure

The Trustees are responsible for the following:

- The day to day running of the Charity
- Organising events for propagation of the goals of the charity
- All administrative affairs connected to the charity

TRUSTEES' ANNUAL REPORT FOR THE PERIOD cont.

Principal Risks and Uncertainties (Risk Management Policy)

The trustees have considered the material risks facing the charity and have put in place mitigating controls to address these risks.

During the year 2024-2025, the trustees identified the following key risks and the measures to be taken to address the key identified risks:

Governance risks

Potential risk:	The charity lacks direction, strategy, and forward planning
Potential impact:	<ul style="list-style-type: none"> - The charity drifts with no clear objectives, priorities, or plans - Issues are addressed piecemeal with no strategic reference - Needs of beneficiaries not fully addressed - Financial management difficulties
Steps to mitigate risk:	<ul style="list-style-type: none"> - Creation of a strategic plan which sets out the key aims, objectives, and policies - Creation of financial plans and budgets - Close monitoring of financial and operational performance - Regular feedback obtained from beneficiaries and funders

Operational risks

Potential risk:	Service provision – customer satisfaction
Potential impact:	<ul style="list-style-type: none"> - Beneficiary complaints - Loss/reduction of donations
Steps to mitigate risk:	<ul style="list-style-type: none"> - Agreement of quality control procedures - Implementation of complaints procedures - Benchmarking of services and implementation of complaints review procedures

Financial risks

Potential risk:	Reserves policies
Potential impact:	<ul style="list-style-type: none"> - Lack of funds or liquidity to respond to new needs or requirements - Inability to meet commitments or planned objectives
Steps to mitigate risk:	<ul style="list-style-type: none"> - Linkage of reserves policy to business plans, activities and identified financial and operating risk - Regularly review reserves policy and reserve levels

TRUSTEES' ANNUAL REPORT FOR THE PERIOD cont.

Environmental and external factors

Potential risk:	Relationship with funders
Potential impact:	Deterioration in relationship may impact on funding and support available
Steps to mitigate risk:	Ensuring regular contact and briefings to donors reporting fully on projects

Compliance risk (law and regulation)

Potential risk:	Compliance with legislation and regulations appropriate to the activities, size, and structure of the charity
Potential impact:	<ul style="list-style-type: none"> - Fines and penalties from regulators - Reputational risks
Steps to mitigate risk:	<ul style="list-style-type: none"> - Identification of key legal and regulatory requirements - Allocation of responsibility for key compliance procedures

Plans for the future

South West London Islamic Society has grown rapidly since its inception. Its future strategy is to ensure it continues and strengthens what it has achieved in the past (refer to achievements during the year section) and to ensure it effectively achieves its objectives.

TRUSTEES' ANNUAL REPORT FOR THE PERIOD cont.

Section C	Objectives and Activities
-----------	---------------------------

Summary of the objects of the charity set out in its governing document

To facilitate the worship for the Muslim community. To teach the correct understanding of Islaam to the Muslims & Non-Muslims, by frequent lessons and occasional conferences, for the males & females, young and old, in and around the Boroughs of Wandsworth, Lambeth and Merton.

The trustees review the aims, objectives, and activities of the charity each year. This review looks at what the charity has achieved and the outcomes of its work in the reporting period.

The trustees report the success of each key activity and the benefits the charity has brought to those groups of people that it is set up to help. The review also helps the trustees ensure the charity's aims, objectives and activities remained focused on its stated purposes.

Summary of the main activities undertaken for the public benefit in relation to these objects

Advance the Islamic religion for the benefit of the public through:

- Holding prayers
- Delivering lectures
- Producing and/or distributing literature on Islaam to enlighten others about Islam
- Collect the yearly Zakat and distribute to those eligible from amongst the community and those outside the community but known to members of the congregation.

Public Benefit Statement

The trustees have referred, reviewed, and adhered to the guidance issued and contained in the Charity Commission's general guidance on public benefit when reviewing the charity's aims and objectives, and in planning its future activities. In particular, the trustees consider how planned activities will contribute to the aims and objectives that have been set. The Trustees have concluded that:

- The aims of the Charity continue to be charitable.
- The aims and work done give identifiable benefits to the charitable sector both directly and indirectly to individuals in need.
- The benefits are for the public, are not unreasonably restricted in any way and certainly not by ability to pay; and there is no detriment or harm arising from these aims or activities.

TRUSTEES' ANNUAL REPORT FOR THE PERIOD cont.

Additional details of objectives and activities

Investment policy

Should the Charity decide to invest as a means of generating additional revenue, all investment decisions will be discussed amongst all Trustees.

All investments undertaken by the Charity will only be undertaken on the following conditions:

- Unanimous agreement amongst all Trustees
- Ethical investments which are in line with the Charity's aims and objectives.

Contribution made by volunteers

The Charity recognises the contribution made by its volunteers and is appreciative of this. Examples of contributions made by the Charity's volunteers during the year include:

- Managing the Charity's social media presence, through X (formally Twitter), SoundCloud, Mixlr and the Charity's website.
- Organising and helping with the Charity's main annual events, Eid, and Ramadhan, serving, and catering for the community, including a variety of stalls (Islamic literature, goodie bags, tea & food, ice cream) and stewards.
- Community engagement – quiz nights, weekly youth football.

TRUSTEES' ANNUAL REPORT FOR THE PERIOD cont.

Section D

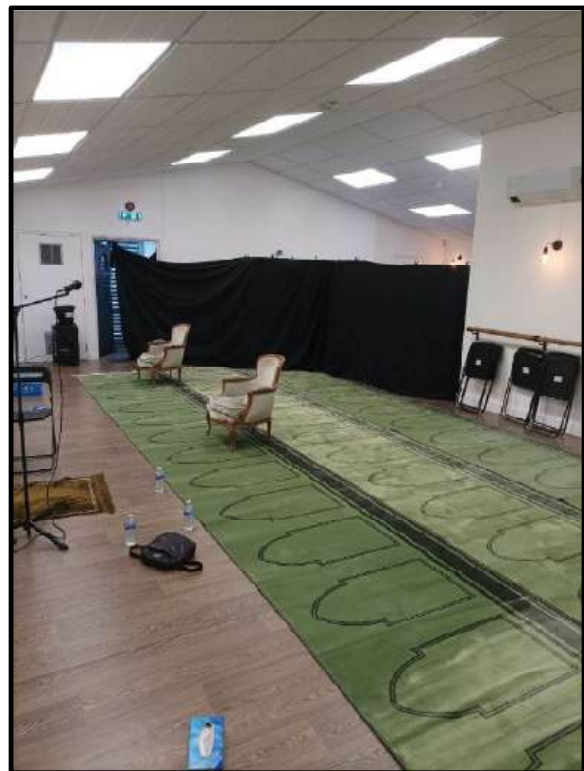
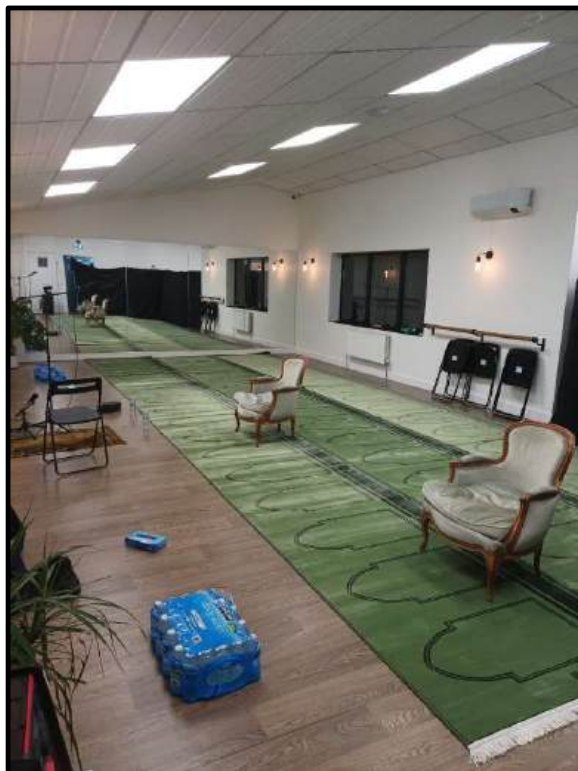
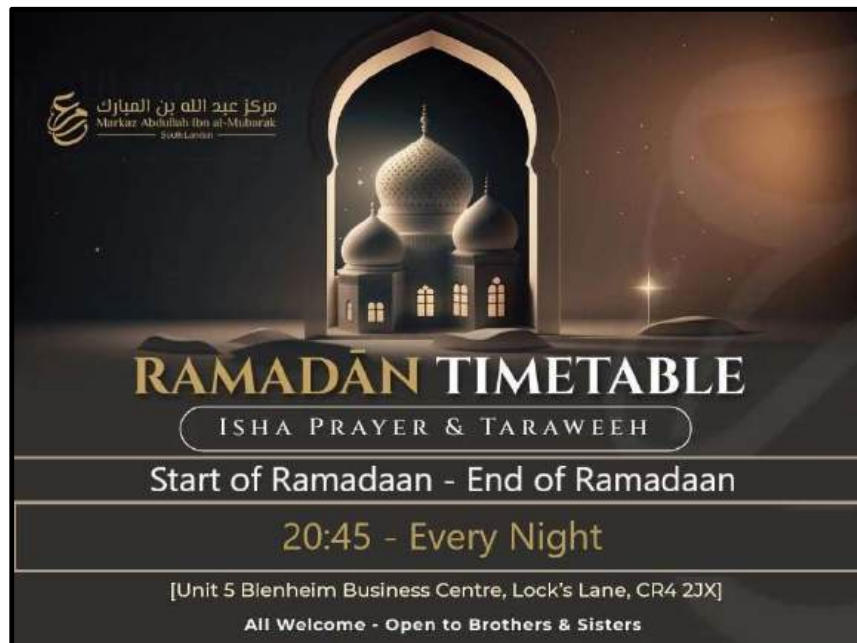
Achievements and Performance

Summary of the main achievements of the charity during the year

An exceptional, productive, and beneficial year for the charity, summarised as per below.

Taraweeh Prayers - March 2025

The charity was able to successfully facilitate Isha prayer followed by the night prayer for the local community during whole month of Ramadaan.



TRUSTEES' ANNUAL REPORT FOR THE PERIOD cont.

Community Iftaar – April 2024

The charity facilitated the breaking of the fast (Iftaar) for the local community every Friday during Ramadaan. The iftar was either sponsored by community members or provided by the charity.



Food Distribution to those in need – April 2024 & March 2025

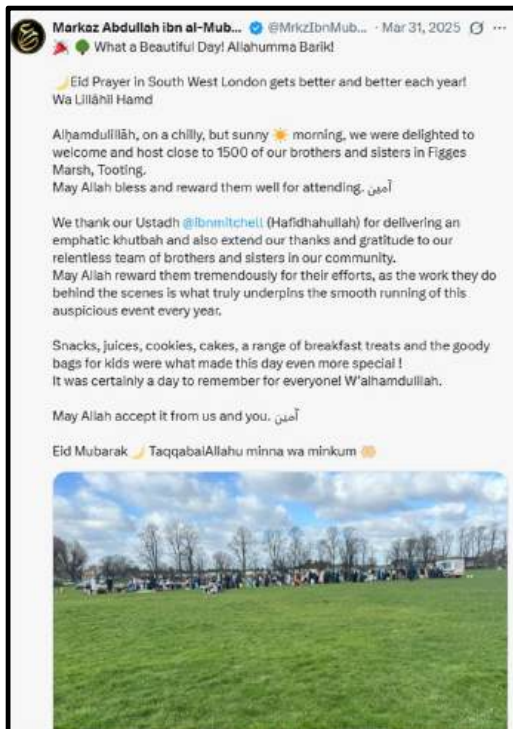
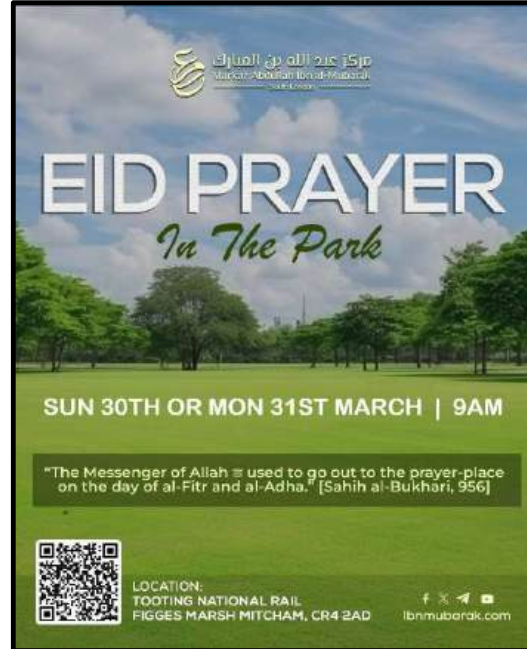
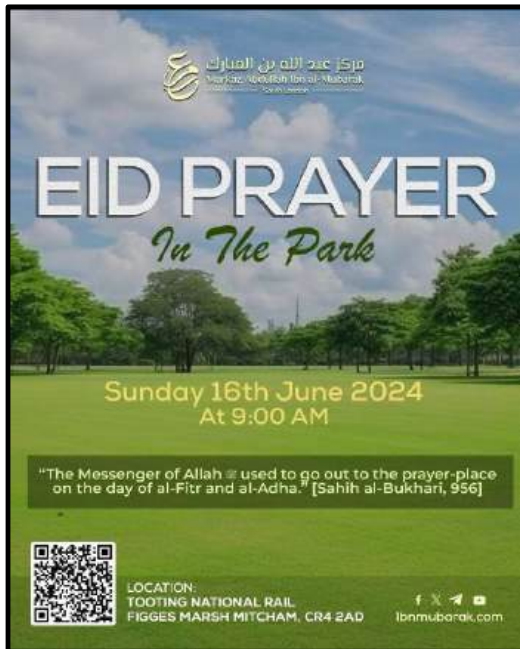
The charity collected charity from the local community and distributed it to the poor and needy in South London.



TRUSTEES' ANNUAL REPORT FOR THE PERIOD cont.

Eid Al-Fitr & Eid Al-Adha Prayers (June 2024 & March 2025)

The charity established the Eid Al-Fitr and Eid-Al Adha prayers in the park for the local South London community. We managed to accommodate 1500 - 2000 people on each occasion.



TRUSTEES' ANNUAL REPORT FOR THE PERIOD cont.

Sisters Afternoon Tea – February 2025

The charity facilitated a women's afternoon tea for the community helping them socialise and building their network of friends.



Friday Prayers (Jummuah) – On-going

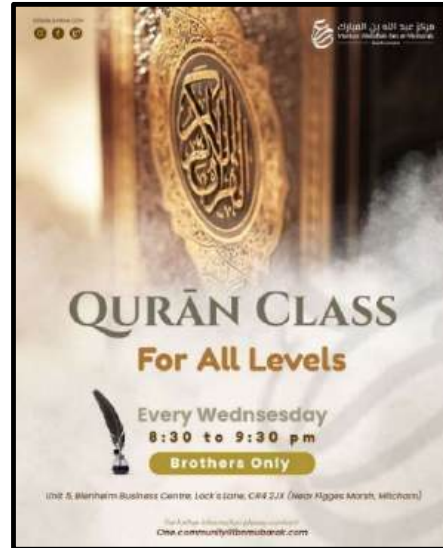
The Markaz AIM team consistently establish Friday Prayers (Jummuah) for the local community. Men, women, and children are all welcome.



TRUSTEES' ANNUAL REPORT FOR THE PERIOD cont.

Regular Lessons and Lectures – On-going

The Charity facilitates regular lessons for the community. We also teach the Qur'aan and the Arabic language.



Building Refurbishment Project – On-going

The Markaz AIM team have continued the campaign for the building refurbishment project. Builders are on site and are working tirelessly to complete the project.



TRUSTEES' ANNUAL REPORT FOR THE PERIOD cont.



Increased Social Media Activity and Followers

The charity has increased its social media presence to promote the charity and its objectives. This has been positively received through the increased number of followers with over 10,000 followers on X (formally Twitter).



The charity also promotes itself and its objectives on SoundCloud, Mixlr and its website, providing free audio recordings and material to benefit and educate. Additionally, the charity's website (www.ibnmubarak.com) is regularly updated with new material and continually monitored, with increased visits to the website since its launch, increasing year on year.

TRUSTEES' ANNUAL REPORT FOR THE PERIOD cont.

Section E

Financial Review

Funds materially in deficit

There were no funds materially in deficit during the period.

Principal sources of funding

The principal source of funding is from individual donors from within the UK who generously donate to the charity and also respond to appeals.

Further financial review

Please refer to the Annual accounts for the period with regards to the charity's principal sources of funds/income and expenditure, in addition to how expenditure has supported the key objectives of the charity.

TRUSTEES' ANNUAL REPORT FOR THE PERIOD cont.

Income and Expenditure

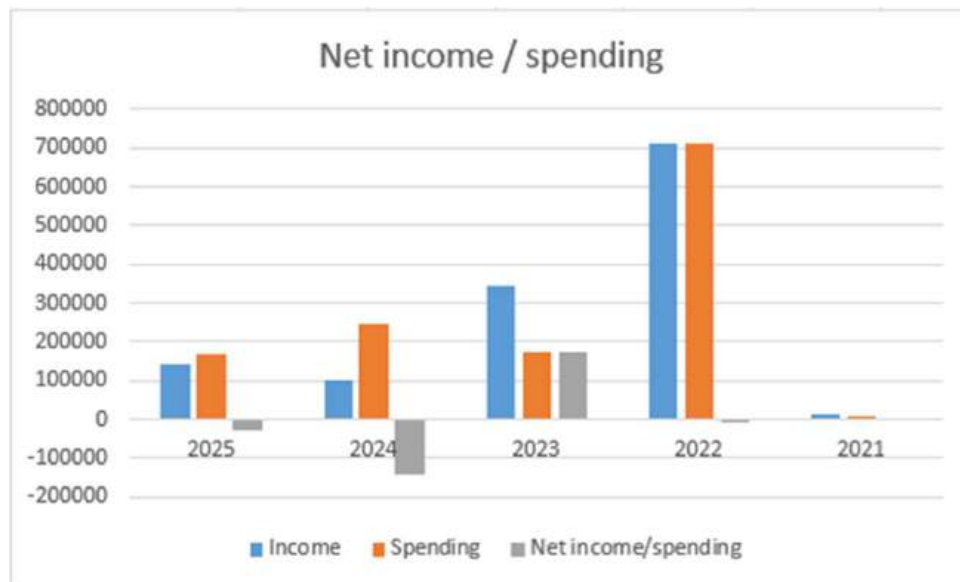
Income

This year South West London Islamic Society generated income of £142,468; with the majority of this received from our donors for our Masjid Refurbishment Appeal.

Expenditure

During the year South West London Islamic Society spent £167,556. This helped us to achieve our objectives and aims as a charity.

Net Income / Spending



Financial Year End (1 st April)	Income	Spending	Net Income / Spending
2025	£142,468	£167,556	£-25,088
2024	£103,183	£246,712	£-143,529
2023	£345,947	£172,823	£173,124
2022	£712,005	£712,016	£-11
2021	£11,677	£7,598	£4,079

TRUSTEES' ANNUAL REPORT FOR THE PERIOD cont.

Section F

Other Information

Overall, an exceptional year for the Charity during 2024-2025, as detailed per the Achievements and Performance section of the Trustees' Annual Report. The Charity expects this to continue further in 2025/2026 and beyond.

TRUSTEES' ANNUAL REPORT FOR THE PERIOD cont.**Section G****Declaration & Statement of Trustees' Responsibilities**

The trustees declare that they have approved the trustees' annual report for the period above.

The trustees are responsible for preparing the Trustees' Annual Report and the financial statements in accordance with applicable law and Accounting Standards.

This requires the trustees to prepare financial statements for each financial year, which give a true and fair view of the state of the affairs of the charity, the incoming resources, and the application of resources, including the income and expenditure of the charity for the year. In preparing these financial statements, the trustees are required to:

- Select suitable accounting policies and then apply them consistently;
- Observe the methods and principles in the Charities accounting policies
- Make judgements and accounting estimates that are responsible and prudent;
- State whether applicable accounting standards have been followed, subject to any material departures disclosed and explained in the financial statements;
- Prepare the financial statements on a going-concern basis unless it is inappropriate to presume that the charity will continue in operation.

The trustees are responsible for keeping adequate accounting records which disclose with reasonable accuracy at any given time the financial position of the charity and which enable them to ensure that the financial statements are compliant. They are also responsible for safeguarding the assets of the charity and hence for taking reasonable steps for the prevention and detection of fraud and other irregularities.

In so far as the trustees, individually, are aware:

- There is no relevant information of which the charity's independent examiner is unaware; and
- The trustees have taken all steps required to make themselves aware of any relevant information and to establish that the independent examiner is aware of such information.

The trustees are responsible for the maintenance and integrity of the financial information included on the charity's website.

The trustees' annual report for the period has been approved by the trustees on date and signed on their behalf by:

Signature:



Signature Full name:

Tahir Chaudry

Position:

Chair

Date:

30/01/2026



Independent examiner's report on the accounts

Section A

Independent Examiner's Report

**Report to the trustees/
members of**

SOUTH WEST LONDON ISLAMIC SOCIETY

**On accounts for the year
ended**

01/04/2025

**Charity no
(if any)**

1186937

Set out on pages

1 – 15 (of CC39A)

**Respective
responsibilities of
trustees and examiner**

The charity's trustees are responsible for the preparation of the accounts. The charity's trustees consider that an audit is not required for this year under section 144 of the Charities Act 2011 (the Charities Act) and that an independent examination is needed.

It is my responsibility to:

- examine the accounts under section 145 of the Charities Act,
- to follow the procedures laid down in the general Directions given by the Charity Commission (under section 145(5)(b) of the Charities Act, and
- to state whether particular matters have come to my attention.

**Basis of independent
examiner's statement**

My examination was carried out in accordance with general Directions given by the Charity Commission. An examination includes a review of the accounting records kept by the charity and a comparison of the accounts presented with those records. It also includes consideration of any unusual items or disclosures in the accounts, and seeking explanations from the trustees concerning any such matters. The procedures undertaken do not provide all the evidence that would be required in an audit, and consequently no opinion is given as to whether the accounts present a 'true and fair' view and the report is limited to those matters set out in the statement below.

Independent examiner's statement

In connection with my examination, no matter has come to my attention (other than that disclosed below *)

1. which gives me reasonable cause to believe that in, any material respect, the requirements:
 - to keep accounting records in accordance with section 130 of the Charities Act; and
 - to prepare accounts which accord with the accounting records and comply with the accounting requirements of the Charities Act have not been met; or
2. to which, in my opinion, attention should be drawn in order to enable a proper understanding of the accounts to be reached.

** Please delete the words in the brackets if they do not apply.*

Signed:



Date: 30/01/2026

Name: Yasir Ali

Relevant professional qualification(s) or body (if any):

ICAEW

Address:

97 Shelley Crescent

Hounslow

Section B

Disclosure

Only complete if the examiner needs to highlight material problems.



**CHARITY COMMISSION
FOR ENGLAND AND WALES**

Charity: SOUTH WEST LONDON ISLAMIC SOCIETY		Charity No (if any)	1186937	
Annual accounts for the period				
Period start date	02/04/2024	To	Period end date	01/04/2025

Section A Statement of financial activities

Recommended categories by activity	Guidance Notes	Unrestricted funds	Restricted income funds	Endowment funds	Total funds	Prior year funds
		£ F01	£ F02	£ F03	£ F04	£ F05
Incoming resources (Note 3)						
Income and endowments from:						
Donations and legacies	S01	-	126,468	-	126,468	103,183
Charitable activities	S02	-	-	-	-	-
Other trading activities	S03	-	-	-	-	-
Investments	S04	-	-	-	-	-
Separate material item of income	S05	-	-	-	-	-
Other	S06	-	16,000	-	16,000	-
Total	S07	-	142,468	-	142,468	103,183
Resources expended (Note 6)						
Expenditure on:						
Raising funds	S08	-	-	-	-	-
Charitable activities	S09	-	-	-	-	-
Separate material item of expense	S10	-	120,640	-	120,640	246,712
Other	S11	46,916	-	-	46,916	-
Total	S12	46,916	120,640	-	167,556	246,712
Net income/(expenditure) before investment gains/(losses)						
	S13	- 46,916	21,828	-	- 25,088	- 143,529
Net gains/(losses) on investments	S14	-	-	-	-	-
Net income/(expenditure)	S15	- 46,916	21,828	-	- 25,088	- 143,529
Extraordinary items	S16	-	-	-	-	-
Transfers between funds	S17	-	-	-	-	-
Other recognised gains/(losses):						
Gains and losses on revaluation of fixed assets for the charity's own use	S18	-	-	-	-	-
Other gains/(losses)	S19	-	-	-	-	-
Net movement in funds	S20	- 46,916	21,828	-	- 25,088	- 143,529
Reconciliation of funds:						
Total funds brought forward	S21	-	36,735	-	36,735	180,264
Total funds carried forward	S22	- 46,916	58,563	-	11,647	36,735

Charity Name: SOUTH WEST LONDON ISLAMIC SOCIETY	Charity No	1186937
	Company No	n/A
Annual accounts for the period	Period start date: 02/04/2024	To period end date: 01/04/2025

Section B Balance sheet

			Restricted				
Guidance note			Unrestricted funds	income funds	Endowment funds	Total this year	Total last year
			£	£	£	£	£
			F01	F02	F03	F04	F05
Fixed assets							
Intangible assets (Note 15)	B01		-	-	-	-	-
Tangible assets (Note 14)	B02		-	700,000	-	700,000	700,000
Heritage assets (Note 16)	B03		-	-	-	-	-
Investments (Note 17)	B04		-	-	-	-	-
Total fixed assets	B05		-	700,000	-	700,000	700,000
Current assets							
Stocks (Note 18)	B06		-	-	-	-	-
Debtors (Note 19)	B07		-	-	-	-	-
Investments (Note 17.4)	B08		-	-	-	-	-
Cash at bank and in hand (Note 24)	B09		11,647	-	-	11,647	36,735
Total current assets	B10		11,647	-	-	11,647	36,735
Creditors: amounts falling due within one year (Note 20)	B11		-	17,000	-	17,000	-
Net current assets/(liabilities)	B12		11,647	- 17,000	-	- 5,353	36,735
Total assets less current liabilities	B13		11,647	683,000	-	694,647	736,735
Creditors: amounts falling due after one year (Note 20)	B14		-	-	-	-	-
Provisions for liabilities	B15		-	-	-	-	-
Total net assets or liabilities	B16		11,647	683,000	-	694,647	736,735
Funds of the Charity							
Endowment funds (Note 27)	B17		-			-	-
Restricted income funds (Note 27)	B18			-		-	-
Unrestricted funds	B19				-	-	-
Revaluation reserve	B20					-	
Fair value reserve	B21						
Total funds	B22		-	-	-	-	-

The company was entitled to exemption from audit under s477 of the Companies Act 2006 relating to small companies.

The members have not required the company to obtain an audit in accordance with section 476 of the Companies Act 2006.

The directors acknowledge their responsibilities for complying with the requirements of the Companies Act with respect to

These accounts have been prepared in accordance with the provisions applicable to small companies subject to the small companies regime and in accordance with FRS102 SORP.

Signed by one or two trustees/directors on behalf of all the trustees/directors

Print Name	Date of approval dd/mm/yyyy
Tahir Chaudry	30/01/2026

Signature of director authenticating accounts being sent to Companies House

Signature	Date dd/mm/yyyy
N/A	N/A

Section C **Notes to the accounts**

Note 1 Basis of preparation

This section should be completed by all charities.

1.1 Basis of accounting

These accounts have been prepared under the historical cost convention with items recognised at cost or transaction value unless otherwise stated in the relevant note(s) to these accounts.

The accounts have been prepared in accordance with:

- and with* ☒ the Statement of Recommended Practice: Accounting and Reporting by Charities preparing their accounts in accordance with the Financial Reporting Standard applicable in the UK and Republic of Ireland (FRS 102) issued on 16 July 2014
- and with* ☐ the Financial Reporting Standard applicable in the United Kingdom and Republic of Ireland (FRS 102)
- and with the Charities Act 2011.

The charity constitutes a public benefit entity as defined by FRS 102.*

* -Tick as appropriate

1.2 Going concern

If there are material uncertainties related to events or conditions that cast significant doubt on the charity's ability to continue as a going concern, please provide the following details or state "Not applicable", if appropriate:

An explanation as to those factors that support the conclusion that the charity is a going concern;	Not applicable
Disclosure of any uncertainties that make the going concern assumption doubtful;	Not applicable
Where accounts are not prepared on a going concern basis, please disclose this fact together with the basis on which the trustees prepared the accounts and the reason why the charity is not regarded as a going concern.	Not applicable

1.3 Change of accounting policy

The accounts present a true and fair view and the accounting policies adopted are those outlined in note { }.

Yes*	<input checked="" type="checkbox"/>	* -Tick as appropriate
No*	<input type="checkbox"/>	

Please disclose:

(i) the nature of the change in accounting policy;	Not applicable
(ii) the reasons why applying the new accounting policy provides more reliable and more relevant information; and	Not applicable
(iii) the amount of the adjustment for each line affected in the current period, each prior period presented and the aggregate amount of the adjustment relating to periods before those presented, 3.44 FRS 102 SORP.	Not applicable

1.4 Changes to accounting estimates

No changes to accounting estimates have occurred in the reporting period (3.46 FRS 102 SORP).

Yes*	<input checked="" type="checkbox"/>	* -Tick as appropriate
No*	<input type="checkbox"/>	

Please disclose:

(i) the nature of any changes;	Not applicable
(ii) the effect of the change on income and expense or assets and liabilities for the current period; and	Not applicable
(iii) where practicable, the effect of the change in one or more future periods.	Not applicable

1.5 Material prior year errors

No material prior year error have been identified in the reporting period (3.47 FRS 102 SORP).

Yes*	<input checked="" type="checkbox"/>	* -Tick as appropriate
No*	<input type="checkbox"/>	

Please disclose:

(i) the nature of the prior period error;	Not applicable
(ii) for each prior period presented in the accounts, the amount of the correction for each account line item affected; and	Not applicable
(iii) the amount of the correction at the beginning of the earliest prior period presented in the accounts.	Not applicable

Section C

Notes to the accounts

Note 2 Accounting policies

Please complete this note when first reporting under FRS2102. Section 35 of FRS102, requires 3 reconciliations to be presented, if all are applicable.

2.1 RECONCILIATION WITH PREVIOUS GENERALLY ACCEPTED ACCOUNTING PRACTICE

Please provide a description of the nature of each change in accounting policy

N/A

Reconciliation of funds per previous GAAP to funds determined under FRS 102

	Start of period £	End of period £
Fund balances as previously stated		
Adjustments:		

Fund balance as restated _____

Reconciliation of net income/(net expenditure) per previous GAAP to net income/(net expenditure) under FRS 102

	End of £
Net income/(expenditure) as previously stated	
Adjustments:	

Previous period net income/(expenditure)
as restated _____

Section C

Notes to the accounts

(cont)

Note 2

Accounting policies

2.2 INCOME

This standard list of accounting policies has been applied by the charity except for those ticked "No" or "N/a". Where a different or additional policy has been adopted then this is detailed in the box below.

Recognition of income	<p>These are included in the Statement of Financial Activities (SoFA) when:</p> <ul style="list-style-type: none"> the charity becomes entitled to the resources; it is more likely than not that the trustees will receive the resources; and the monetary value can be measured with sufficient reliability. 	<table> <tr> <th>Yes</th><th>No</th><th>N/a</th></tr> <tr> <td><input checked="" type="checkbox"/></td><td><input type="checkbox"/></td><td><input type="checkbox"/></td></tr> </table>	Yes	No	N/a	<input checked="" type="checkbox"/>	<input type="checkbox"/>	<input type="checkbox"/>
Yes	No	N/a						
<input checked="" type="checkbox"/>	<input type="checkbox"/>	<input type="checkbox"/>						
Offsetting	<p>There has been no offsetting of assets and liabilities, or income and expenses, unless required or permitted by the FRS 102 SORP or FRS 102.</p>	<table> <tr> <th>Yes</th><th>No</th><th>N/a</th></tr> <tr> <td><input checked="" type="checkbox"/></td><td><input type="checkbox"/></td><td><input type="checkbox"/></td></tr> </table>	Yes	No	N/a	<input checked="" type="checkbox"/>	<input type="checkbox"/>	<input type="checkbox"/>
Yes	No	N/a						
<input checked="" type="checkbox"/>	<input type="checkbox"/>	<input type="checkbox"/>						
Grants and donations	<p>Grants and donations are only included in the SoFA when the general income recognition criteria are met (5.10 to 5.12 FRS102 SORP).</p> <p>In the case of performance related grants, income must only be recognised to the extent that the charity has provided the specified goods or services as entitlement to the grant only occurs when the performance related conditions are met (5.16 FRS 102 SORP).</p>	<table> <tr> <th>Yes</th><th>No</th><th>N/a</th></tr> <tr> <td><input checked="" type="checkbox"/></td><td><input type="checkbox"/></td><td><input type="checkbox"/></td></tr> </table>	Yes	No	N/a	<input checked="" type="checkbox"/>	<input type="checkbox"/>	<input type="checkbox"/>
Yes	No	N/a						
<input checked="" type="checkbox"/>	<input type="checkbox"/>	<input type="checkbox"/>						
Legacies	<p>Legacies are included in the SOFA when receipt is probable, that is, when there has been grant of probate, the executors have established that there are sufficient assets in the estate and any conditions attached to the legacy are either within the control of the charity or have been met.</p>	<table> <tr> <th>Yes</th><th>No</th><th>N/a</th></tr> <tr> <td><input type="checkbox"/></td><td><input type="checkbox"/></td><td><input checked="" type="checkbox"/></td></tr> </table>	Yes	No	N/a	<input type="checkbox"/>	<input type="checkbox"/>	<input checked="" type="checkbox"/>
Yes	No	N/a						
<input type="checkbox"/>	<input type="checkbox"/>	<input checked="" type="checkbox"/>						
Government grants	<p>The charity has received government grants in the reporting period</p>	<table> <tr> <th>Yes</th><th>No</th><th>N/a</th></tr> <tr> <td><input type="checkbox"/></td><td><input checked="" type="checkbox"/></td><td><input type="checkbox"/></td></tr> </table>	Yes	No	N/a	<input type="checkbox"/>	<input checked="" type="checkbox"/>	<input type="checkbox"/>
Yes	No	N/a						
<input type="checkbox"/>	<input checked="" type="checkbox"/>	<input type="checkbox"/>						
Tax reclaims on donations and gifts	<p>Gift Aid receivable is included in income when there is a valid declaration from the donor. Any Gift Aid amount recovered on a donation is considered to be part of that gift and is treated as an addition to the same fund as the initial donation unless the donor or the terms of the appeal have specified otherwise.</p>	<table> <tr> <th>Yes</th><th>No</th><th>N/a</th></tr> <tr> <td><input checked="" type="checkbox"/></td><td><input type="checkbox"/></td><td><input type="checkbox"/></td></tr> </table>	Yes	No	N/a	<input checked="" type="checkbox"/>	<input type="checkbox"/>	<input type="checkbox"/>
Yes	No	N/a						
<input checked="" type="checkbox"/>	<input type="checkbox"/>	<input type="checkbox"/>						
Contractual income and performance related grants	<p>This is only included in the SoFA once the charity has provided the related goods or services or met the performance related conditions.</p>	<table> <tr> <th>Yes</th><th>No</th><th>N/a</th></tr> <tr> <td><input type="checkbox"/></td><td><input type="checkbox"/></td><td><input checked="" type="checkbox"/></td></tr> </table>	Yes	No	N/a	<input type="checkbox"/>	<input type="checkbox"/>	<input checked="" type="checkbox"/>
Yes	No	N/a						
<input type="checkbox"/>	<input type="checkbox"/>	<input checked="" type="checkbox"/>						
Donated goods	<p>Donated goods are measured at fair value (the amount for which the asset could be exchanged) unless impractical to do so.</p> <p>The cost of any stock of goods donated for distribution to beneficiaries is deemed to be the fair value of those gifts at the time of their receipt and they are recognised on receipt. In the reporting period in which the stocks are distributed, they are recognised as an expense at the carrying amount of the stocks at distribution.</p> <p>Donated goods for resale are measured at fair value on initial recognition, which is the expected proceeds from sale less the expected costs of sale, and recognised in 'Income from other trading activities' with the corresponding stock recognised in the balance sheet. On its sale the value of stock is charged against 'Income from other trading activities' and the proceeds from sale are also recognised as 'Income from other trading activities'.</p> <p>Goods donated for on-going use by the charity are recognised as tangible fixed assets and included in the SoFA as incoming resources when receivable.</p> <p>Gifts in kind for use by the charity are included in the SoFA as income from donations when receivable.</p>	<table> <tr> <th>Yes</th><th>No</th><th>N/a</th></tr> <tr> <td><input type="checkbox"/></td><td><input type="checkbox"/></td><td><input checked="" type="checkbox"/></td></tr> </table>	Yes	No	N/a	<input type="checkbox"/>	<input type="checkbox"/>	<input checked="" type="checkbox"/>
Yes	No	N/a						
<input type="checkbox"/>	<input type="checkbox"/>	<input checked="" type="checkbox"/>						
Donated services and facilities	<p>Donated services and facilities are included in the SOFA when received at the value of the gift to the charity provided the value of the gift can be measured reliably.</p> <p>Donated services and facilities that are consumed immediately are recognised as income with an equivalent amount recognised as an expense under the appropriate heading in the SOFA.</p>	<table> <tr> <th>Yes</th><th>No</th><th>N/a</th></tr> <tr> <td><input checked="" type="checkbox"/></td><td><input type="checkbox"/></td><td><input type="checkbox"/></td></tr> </table>	Yes	No	N/a	<input checked="" type="checkbox"/>	<input type="checkbox"/>	<input type="checkbox"/>
Yes	No	N/a						
<input checked="" type="checkbox"/>	<input type="checkbox"/>	<input type="checkbox"/>						
Support costs	<p>The charity has incurred expenditure on support costs.</p>	<table> <tr> <th>Yes</th><th>No</th><th>N/a</th></tr> <tr> <td><input checked="" type="checkbox"/></td><td><input type="checkbox"/></td><td><input type="checkbox"/></td></tr> </table>	Yes	No	N/a	<input checked="" type="checkbox"/>	<input type="checkbox"/>	<input type="checkbox"/>
Yes	No	N/a						
<input checked="" type="checkbox"/>	<input type="checkbox"/>	<input type="checkbox"/>						
Volunteer help	<p>The value of any voluntary help received is not included in the accounts but is described in the trustees' annual report.</p>	<table> <tr> <th>Yes</th><th>No</th><th>N/a</th></tr> <tr> <td><input checked="" type="checkbox"/></td><td><input type="checkbox"/></td><td><input type="checkbox"/></td></tr> </table>	Yes	No	N/a	<input checked="" type="checkbox"/>	<input type="checkbox"/>	<input type="checkbox"/>
Yes	No	N/a						
<input checked="" type="checkbox"/>	<input type="checkbox"/>	<input type="checkbox"/>						

Income from interest, royalties and dividends	This is included in the accounts when receipt is probable and the amount receivable can be measured reliably.
Income from membership subscriptions	Membership subscriptions received in the nature of a gift are recognised in Donations and Legacies. Membership subscriptions which gives a member the right to buy services or other benefits are recognised as income earned from the provision of goods and services as income from charitable activities.
Settlement of insurance claims	Insurance claims are only included in the SoFA when the general income recognition criteria are met (5.10 to 5.12 FRS102 SORP) and are included as an item of other income in the SoFA.
Investment gains and losses	This includes any realised or unrealised gains or losses on the sale of investments and any gain or loss resulting from revaluing investments to market value at the end of the year.

Yes	No	N/a
<input type="checkbox"/>	<input type="checkbox"/>	<input checked="" type="checkbox"/>
Yes	No	N/a
<input type="checkbox"/>	<input type="checkbox"/>	<input checked="" type="checkbox"/>
Yes	No	N/a
<input type="checkbox"/>	<input type="checkbox"/>	<input checked="" type="checkbox"/>
Yes	No	N/a
<input type="checkbox"/>	<input type="checkbox"/>	<input checked="" type="checkbox"/>
Yes	No	N/a
<input type="checkbox"/>	<input type="checkbox"/>	<input checked="" type="checkbox"/>

2.3 EXPENDITURE AND LIABILITIES

Liability recognition	Liabilities are recognised where it is more likely than not that there is a legal or constructive obligation committing the charity to pay out resources and the amount of the obligation can be measured with reasonable certainty.
Governance and support costs	Support costs have been allocated between governance costs and other support. Governance costs comprise all costs involving public accountability of the charity and its compliance with regulation and good practice. Support costs include central functions and have been allocated to activity cost categories on a basis consistent with the use of resources, eg allocating property costs by floor areas, or per capita, staff costs by the time spent and other costs by their usage.
Grants with performance conditions	Where the charity gives a grant with conditions for its payment being a specific level of service or output to be provided, such grants are only recognised in the SoFA once the recipient of the grant has provided the specified service or output.
Grants payable without performance conditions	Where there are no conditions attaching to the grant that enables the donor charity to realistically avoid the commitment, a liability for the full funding obligation must be recognised.
Redundancy cost	The charity made no redundancy payments during the reporting period.
Deferred income	No material item of deferred income has been included in the accounts.
Creditors	The charity has creditors which are measured at settlement amounts less any trade discounts
Provisions for liabilities	A liability is measured on recognition at its historical cost and then subsequently measured at the best estimate of the amount required to settle the obligation at the reporting date
Basic financial instruments	The charity accounts for basic financial instruments on initial recognition as per paragraph 11.7 FRS102 SORP. Subsequent measurement is as per paragraphs 11.17 to 11.19, FRS102 SORP.

Yes	No	N/a
<input checked="" type="checkbox"/>	<input type="checkbox"/>	<input type="checkbox"/>
Yes	No	N/a
<input checked="" type="checkbox"/>	<input type="checkbox"/>	<input type="checkbox"/>
Yes	No	N/a
<input checked="" type="checkbox"/>	<input type="checkbox"/>	<input type="checkbox"/>
Yes	No	N/a
<input checked="" type="checkbox"/>	<input type="checkbox"/>	<input type="checkbox"/>
Yes	No	N/a
<input checked="" type="checkbox"/>	<input type="checkbox"/>	<input type="checkbox"/>
Yes	No	N/a
<input checked="" type="checkbox"/>	<input type="checkbox"/>	<input type="checkbox"/>
Yes	No	N/a
<input checked="" type="checkbox"/>	<input type="checkbox"/>	<input type="checkbox"/>
Yes	No	N/a
<input checked="" type="checkbox"/>	<input type="checkbox"/>	<input type="checkbox"/>

2.4 ASSETS

Tangible fixed assets for use by charity	These are capitalised if they can be used for more than one year, and cost at least <input type="text"/>
	They are valued at cost.
	The depreciation rates and methods used are disclosed in note 9.2.
Intangible fixed assets	The charity has intangible fixed assets, that is, non-monetary assets that do not have physical substance but are identifiable and are controlled by the charity through custody or legal rights. The amortisation rates and methods used are disclosed in note 9.5
	They are valued at cost.
Heritage assets	The charity has heritage assets, that is, non-monetary assets with historic, artistic, scientific, technological, geophysical or environmental qualities that are held and maintained principally for their contribution to knowledge and culture. The depreciation rates and methods used as disclosed in note 9.6.1.4.
	They are valued at cost.

Yes	No	N/a
<input checked="" type="checkbox"/>	<input type="checkbox"/>	<input type="checkbox"/>
Yes	No	N/a
<input type="checkbox"/>	<input checked="" type="checkbox"/>	<input type="checkbox"/>
Yes	No	N/a
<input type="checkbox"/>	<input type="checkbox"/>	<input checked="" type="checkbox"/>
Yes	No	N/a
<input type="checkbox"/>	<input checked="" type="checkbox"/>	<input type="checkbox"/>
Yes	No	N/a
<input type="checkbox"/>	<input type="checkbox"/>	<input checked="" type="checkbox"/>

Investments

Fixed asset investments in quoted shares, traded bonds and similar investments are valued at initially at cost and subsequently at fair value (their market value) at the year end. The same treatment is applied to unlisted investments unless fair value cannot be measured reliably in which case it is measured at cost less impairment.

Yes	No	N/a
<input type="checkbox"/>	<input type="checkbox"/>	<input checked="" type="checkbox"/>

Investments held for resale or pending their sale and cash and cash equivalents with a maturity date of less than 1 year are treated as current asset investments

Yes	No	N/a
<input type="checkbox"/>	<input type="checkbox"/>	<input checked="" type="checkbox"/>

Stocks and work in progress

Stocks held for sale as part of non-charitable trade are measured at the lower or cost or net realisable value.

Yes	No	N/a
<input type="checkbox"/>	<input type="checkbox"/>	<input checked="" type="checkbox"/>

Goods or services provided as part of a charitable activity are measured at net realisable value based on the service potential provided by items of stock.

Yes	No	N/a
<input type="checkbox"/>	<input type="checkbox"/>	<input checked="" type="checkbox"/>

Work in progress is valued at cost less any foreseeable loss that is likely to occur on the contract.

Yes	No	N/a
<input type="checkbox"/>	<input type="checkbox"/>	<input checked="" type="checkbox"/>

Debtors

Debtors (including trade debtors and loans receivable) are measured on initial recognition at settlement amount after any trade discounts or amount advanced by the charity. Subsequently, they are measured at the cash or other consideration expected to be received.

Yes	No	N/a
<input type="checkbox"/>	<input type="checkbox"/>	<input checked="" type="checkbox"/>

Current asset investments

The charity has investments which it holds for resale or pending their sale and cash and cash equivalents with a maturity date less than one year. These include cash on deposit and cash equivalents with a maturity date of less than one year held for investment purposes rather than to meet short term cash commitments as they fall due.

Yes	No	N/a
<input type="checkbox"/>	<input checked="" type="checkbox"/>	<input type="checkbox"/>

They are valued at fair value except where they qualify as basic financial instruments.

Yes	No	N/a
<input type="checkbox"/>	<input type="checkbox"/>	<input checked="" type="checkbox"/>

Section C **Notes to the accounts** **(cont)**

Note 3 **Analysis of income**

		Unrestricted funds	Restricted income funds	Endowment funds	Total funds £	Prior year £
Analysis						
Donations and legacies:	Donations and gifts	-	126,468	-	126,468	103,183
	Gift Aid	-	-	-	-	-
	Legacies	-	-	-	-	-
	General grants provided by government/other charities	-	-	-	-	-
	Membership subscriptions and sponsorships which are in substance donations	-	-	-	-	-
	Donated goods, facilities and services	-	-	-	-	-
	Loans	-	16,000	-	16,000	-
	Total	-	142,468	-	142,468	103,183
Charitable activities:		-	-	-	-	-
		-	-	-	-	-
		-	-	-	-	-
	Other	-	-	-	-	-
	Total	-	-	-	-	-
Other trading activities:		-	-	-	-	-
		-	-	-	-	-
		-	-	-	-	-
	Other	-	-	-	-	-
	Total	-	-	-	-	-
Income from investments:	Interest income	-	-	-	-	-
	Dividend income	-	-	-	-	-
	Rental and leasing income	-	-	-	-	-
	Other	-	-	-	-	-
	Total	-	-	-	-	-
Separate material item of income:		-	-	-	-	-
		-	-	-	-	-
		-	-	-	-	-
		-	-	-	-	-
	Total	-	-	-	-	-
Other:	Conversion of endowment funds into income	-	-	-	-	-
	Gain on disposal of a tangible fixed asset held for charity's own use	-	-	-	-	-
	Gain on disposal of a programme related investment	-	-	-	-	-
	Royalties from the exploitation of intellectual property rights	-	-	-	-	-
	Other	-	-	-	-	-
	Total	-	-	-	-	-
TOTAL INCOME		-	142,468	-	142,468	103,183

Other information:

All income in the prior year was unrestricted except for: (please provide description and amounts)

Where any endowment fund is converted into income in the reporting period, please give the reason for the conversion.

Where any endowment fund is converted into income in the prior period, please give the reason for the conversion.

Within the income items above the following items are material: (please disclose the nature, amount and any prior year amounts)

Section C	Notes to the accounts	(cont)
------------------	------------------------------	---------------

Note 4 **Analysis of receipts of government grants**

	Description	This year £
Government grant 1		-
Government grant 2		-
Government grant 3		-
Other		-
	Total	-

	Description	Last year £
Government grant 1		-
Government grant 2		-
Government grant 3		-
Other		-
	Total	-

	This year	Last year
<i>Please provide details of any unfulfilled conditions and other contingencies attaching to grants that have been recognised in income.</i>		

	This year	Last year
<i>Please give details of other forms of government assistance from which the charity has directly benefited.</i>		

Section C	Notes to the accounts	(cont)
------------------	------------------------------	---------------

Note 5 **Donated goods, facilities and services**

	This year £	Last year £
Seconded staff	-	-
Use of property	-	-
Other	-	-
	-	-

	This year	Last year
Please provide details of the accounting policy for the recognition and valuation of donated goods, facilities and services.		
Please provide details of any unfulfilled conditions and other contingencies attaching to resources from donated goods and services not recognised in income.		
Please give details of other forms of other donated goods and services not recognised in the accounts, eg contribution of unpaid volunteers.		

Section C **Notes to the accounts** **(cont)**

Note 6 **Analysis of expenditure**

Analysis	This year				Last year			
	Unrestricted funds	Restricted income funds	Endowment funds	Total funds	Unrestricted funds	Restricted income funds	Endowment funds	Total funds
Expenditure on raising funds:				£				£
Incurred seeking donations	-	-	-	-	-	-	-	-
Incurred seeking legacies	-	-	-	-	-	-	-	-
Incurred seeking grants	-	-	-	-				-
Operating membership schemes and social lotteries	-	-	-	-				-
Rent and property running costs	11,717	-	-	11,717				-
Equipment	6,516	-	-	6,516				-
IT and phone costs	1,659	-	-	1,659				-
General costs	1,252	-	-	1,252				-
Advertising, marketing, direct mail and publicity	672	-	-	672	-	-	-	-
Bank charges	96	-	-	96	-	-	-	-
Legal and professional	6,660	-	-	6,660	-	-	-	-
Travel costs	2,792	-	-	2,792				-
Loans repaid	2,000	-	-	2,000				-
Portfolio management costs	-	-	-	-	-	-	-	-
Cost of obtaining investment advice	-	-	-	-	-	-	-	-
Investment administration costs	-	-	-	-	-	-	-	-
Intellectual property licencing costs	-	-	-	-	-	-	-	-
Rent collection, property repairs and maintenance charges	-	-	-	-	-	-	-	-
	-	-	-	-	-	-	-	-
Total expenditure on raising funds	33,364	-	-	33,364	-	-	-	-
Expenditure on charitable activities:								
	-	-	-	-	-	-	-	-
Events	10,303	-	-	10,303	-	-	-	-
Lessons	1,180	-	-	1,180	-	-	-	-
Donations	2,068	-	-	2,068	-	-	-	-
Total expenditure on charitable activities	13,551	-	-	13,551	-	-	-	-
Separate material item of expense								
	-	-	-	-	-	-	-	-
Building	-	120,640	-	120,640	-	246,712	-	246,712
	-	-	-	-	-	-	-	-
Total	-	120,640	-	120,640	-	246,712	-	246,712
Other								
	-	-	-	-	-	-	-	-
	-	-	-	-	-	-	-	-
	-	-	-	-	-	-	-	-
	-	-	-	-	-	-	-	-
Total other expenditure	-	-	-	-	-	-	-	-
TOTAL EXPENDITURE	46,916	120,640	-	167,556	-	246,712	-	246,712

Other information:

Analysis of expenditure on charitable activities

Activity or programme	This year				Last year			
	Activities undertaken directly	Grant funding of activities	Support Costs	Total this year	Activities undertaken directly	Grant funding of activities	Support Costs	Total last year
	£	£	£	£	£	£	£	£
Activity 1	10,303	-	-	10,303	-	-	-	-
Activity 2	1,180	-	-	1,180	-	-	-	-
Other	-	2,068	-	2,068	-	-	-	-
Total	11,483	2,068	-	13,551	-	-	-	-

Section C	Notes to the accounts	(cont)
------------------	------------------------------	---------------

Note 7 Extraordinary items

Please explain the nature of each extraordinary item occurring in the period.

	Description	This year £	Last year £
Extraordinary item 1	N/A	-	-
Extraordinary item 2		-	-
Extraordinary item 3		-	-
Extraordinary item 4		-	-
Total extraordinary items		-	-

Section C

Notes to the accounts

Note 8 Funds received as agent

8.1 Please complete this note if the charity has agreed to administer the funds of another entity as its agent. Note: If a charity is acting as an agent, it should not recognise the income in the Statement of Financial Activities or the Balance Sheet.

Description/name of party	Related party (Yes or No)	Amount received		Amount paid out		Balance held at period end	
		This year	Last year	This year	Last year	This year	Last year
		£	£	£	£	£	£
N/A		-	-	-	-	-	-
		-	-	-	-	-	-
		-	-	-	-	-	-
		-	-	-	-	-	-
		-	-	-	-	-	-
Total		-	-	-	-	-	-

8.2 Where a consortia or similar arrangement exists whereby 2 or more charities co-operate to achieve economies in the purchase of goods or services, please disclose details of any balances outstanding between any participating members.

Description/name of party	Balance held at period end	
	This year	Last year
	£	£
	-	-
	-	-
	-	-
	-	-
	-	-
Total		-

Section C **Notes to the accounts**

Note 9 **Support Costs**

Please complete this note if the charity has analysed its expenses using activity categories and has support costs.

This year

Support cost (examples)	Raising funds £	Activity 1 £	Activity 2 £	Activity 3 £	Grand total £	Basis of allocation (Describe method)
Governance	-	-	-	-	-	
	-	-	-	-	-	
	-	-	-	-	-	
	-	-	-	-	-	
Other	-	-	-	-	-	
Total	-	-	-	-	-	

Last year

Support cost (examples)	Raising funds £	Activity 1 £	Activity 2 £	Activity 3 £	Grand total £	Basis of allocation (Describe method)
Governance	-	-	-	-	-	
	-	-	-	-	-	
	-	-	-	-	-	
	-	-	-	-	-	
Other	-	-	-	-	-	
Total	-	-	-	-	-	

Please provide details of the accounting policy adopted for the apportionment of costs between activities and any estimation techniques used to calculate their apportionment.

Section C

Notes to the accounts

Note 10 Details of certain items of expenditure

10.1 Fees for examination of the accounts

Please provide details of the amount paid for any statutory external scrutiny of accounts and other services provided by your independent examiner. If nothing was paid please enter '0' in the appropriate box(es).

Independent examiner's fees

Assurance services other than audit or independent examination

Tax advisory fees

Other fees (for example: financial advice, consultancy, accountancy services) paid to the independent examiner

This year £	Last year £
-	-
-	-
-	-
-	-

Section C **Notes to the accounts** **(cont)**

Note 11 **Paid employees**
Please complete this note if the charity has any employees.

11.1 Staff Costs

	This year £	Last year £
Salaries and wages	-	-
Social security costs	-	-
Pension costs (defined contribution scheme)	-	-
Other employee benefits	-	-
Total staff costs	-	-

This year:

Please provide details of expenditure on staff working for the charity whose contracts are with and are paid by a related party

Last year:

Please provide details of expenditure on staff working for the charity whose contracts are with and are paid by a related party

Please give details of the number of employees whose total employee benefits (excluding employer pension costs) fell within each band of £10,000 from £60,000 upwards. If there are no such transactions, please enter 'true' in the box provided.

No employees received employee benefits (excluding employer pension costs) for the reporting period of more than £60,000

Band	Number of employees	
	This year	Last year
£60,000 to £69,999	-	-
£70,000 to £79,999	-	-
£80,000 to £89,999	-	-
£90,000 to £99,999	-	-
£100,000 to £109,999	-	-

	This year £	Last year £
Please provide the total amount paid to key management personnel (includes trustees and senior management) for their services to the charity. For specific amounts paid to trustees, see Note 28.	-	-

11.2 Average head count in the year

The parts of the charity in which the employees work

	This year Number	Last year Number
Fundraising	-	-
Charitable Activities	-	-
Governance	-	-
Other	-	-
Total	-	-

11.3 Ex-gratia payments to employees and others (excluding trustees)

Please complete if an ex-gratia payment is made.

Please explain the nature of the payment

This year	
Last year	

Please state the legal authority or reason for making the payment

This year	
Last year	

	This year £	Last year £
Please state the amount of the payment (or value of any waiver of a right to an asset)	-	-

11.4 Redundancy payments

Please complete if any redundancy or termination payment is made in the period.

	This year £	Last year £
Total amount of payment	-	-

The nature of the payment (cash, asset etc.)

--	--

The extent of redundancy funding at the balance sheet date

	This year £	Last year £
	-	-

Please state the accounting policy for any redundancy or termination payments

--	--

Section C	Notes to the accounts	(cont)
-----------	-----------------------	--------

Note 12 **Defined contribution pension scheme or defined benefit scheme accounted for as a defined contribution scheme.**

12.1 *Please complete this note if a defined contribution pension scheme is operated.*

	This year	Last year
	£	£
Amount of contributions recognised in the SOFA as an expense	-	-

Please explain the basis for allocating the liability and expense of defined contribution pension scheme between activities and between restricted and unrestricted funds.

--	--

12.2 *Please complete this section where the charity participates in a defined benefit pension plan but is unable to ascertain its share of the underlying assets and liabilities.*

Please confirm that although the scheme is accounted for as a defined contribution plan, it is a defined benefit plan.

Please provide such information as is available about the plan's surplus or deficit and the implications, if any, for the reporting charity for this year and last year, if different

12.3 *Please complete this section where the charity participates in a multi-employer defined benefit pension plan that is accounted for as a defined contribution plan.*

Describe the extent to which the charity can be liable to the plan for other entities' obligations under the terms and conditions of the multi-employer plan. If this is different for last year, provide details

Provide an explanation of how any liability arising from an agreement with a multi-employer plan to fund a deficit has been determined. If this is different for last year, provide details

Section C

Note 13

Please complete this note if the charity made any grants or donations which in aggregate form a material part of the charitable activities undertaken.

This year:

13.1 Analysis of grants paid (included in cost of charitable activities)

Analysis	Grants to institutions	Grants to individuals	Support costs	Total
			£	£
Activity or project 1	-	-	-	-
Activity or project 2	-	-	-	-
Activity or project 3	-	-	-	-
Activity or project 4	-	-	-	-
Total	-	-	-	-

Please enter "Nil" if the charity does not identify and/or allocate support costs.

13.2 Grants made to institutions

<p><i>My charity has made grants to particular institutions that are material in the context of its grantmaking. Details of the institution supported, purpose of the grant and total paid to each institution is available on the charity's web site.</i></p>	Yes	Please provide details of charity's URL.
	No	Provide details below

Names of institution	Purpose	Total amount of grants paid £
		-
		-
		-
		-
		-
		-
		-
		-
		-
Total grants to institutions in reporting period		-
Other unanalysed grants		-
TOTAL GRANTS PAID		-

Last year:

13.3 Analysis of grants paid (included in cost of charitable activities)

Analysis	Grants to institutions	Grants to individuals	Support costs £	Total £
Activity or project 1	-	-	-	-
Activity or project 2	-	-	-	-
Activity or project 3	-	-	-	-
Activity or project 4	-	-	-	-
Total	-	-	-	-

Please enter "Nil" if the charity does not identify and/or allocate support costs.

13.4 Grants made to institutions

<p><i>My charity has made grants to particular institutions that are material in the context of its grantmaking. Details of the institution supported, purpose of the grant and total paid to each institution is available on the charity's web site.</i></p>	Yes	Please provide details of charity's URL.
	No	Provide details below

Names of institution	Purpose	Total amount of grants paid £
		-
		-
		-
		-
		-
		-
		-
		-
		-
		-
Total grants to institutions in reporting period		-
Other unanalysed grants		-
TOTAL GRANTS PAID		-

Section C **Notes to the accounts** **(cont)**

Note 14 **Tangible fixed assets**

Please complete this note if the charity has any tangible fixed assets

14.1 Cost or valuation

	Freehold land & buildings	Other land & buildings	Plant, machinery and motor vehicles	Fixtures, fittings and equipment	Total
	£	£	£	£	£
At the beginning of the year	700,000	-	-	-	700,000
Additions	-	-	-	-	-
Revaluations	-	-	-	-	-
Disposals	-	-	-	-	-
Transfers *	-	-	-	-	-
At end of the year	700,000	-	-	-	700,000

14.2 Depreciation and impairments

**Basis	SL or RB (Straight Line or Reducing Balance)	SL or RB	SL or RB	SL or RB	SL or RB
** Rate					
At beginning of the year	-	-	-	-	-
Disposals	-	-	-	-	-
Depreciation	-	-	-	-	-
Impairment	-	-	-	-	-
Transfers*	-	-	-	-	-
At end of the year	-	-	-	-	-

14.3 Net book value

Net book value at the beginning of the year	700,000	-	-	-	700,000
Net book value at the end of the year	700,000	-	-	-	700,000

14.4 Impairment

This year: Please provide a description of the events and circumstances that led to the recognition or reversal of an impairment loss.

N/A

Last year: Please provide a description of the events and circumstances that led to the recognition or reversal of an impairment loss.

14.5 Revaluation

If an accounting policy of revaluation is adopted, please provide:

the effective date of the revaluation

the name of independent valuer, if applicable

the methods applied and significant assumptions

the carrying amount that would have been recognised had the assets been carried under the cost model.

This year	Last year
-	-

14.6 Other disclosures

(i) Please state the amount of borrowing costs, if any, capitalised in the construction of tangible fixed assets and the capitalisation rate used.

(ii) Please provide the amount of contractual commitments for the acquisition of tangible fixed assets.

(iii) Details of the existence and carrying amounts of property, plant and equipment to which the charity has restricted title or that are pledged as security for liabilities.

This year	Last year
£	£
-	-
-	-

* The "transfers" row is for movements between fixed asset categories.

** Please indicate the method of depreciation by deleting the method not applicable (SL = straight line; RB = reducing balance). Also please indicate the rate of depreciation: for straight line, what is the anticipated life of the asset (in years); for reducing balance, what is the percentage annual deduction.

Section C **Notes to the accounts** (cont)

Note 15 **Intangible assets**
Please complete this note if the charity has any intangible assets

15.1 Cost or valuation

	Research & development	Patents and trademarks	Other	Total
	£	£	£	£
At beginning of the year	-	-	-	-
Additions	-	-	-	-
Disposals	-	-	-	-
Revaluations	-	-	-	-
Transfers *	-	-	-	-
At end of the year	-	-	-	-

15.2 Amortisation and impairments

**Basis	SL or RB	SL or RB	SL or RB	SL or RB	Straight Line ("SL") or Reducing Balance ("RB")
** Rate					

At beginning of the year	-	-	-	-
Disposals	-	-	-	-
Amortisation	-	-	-	-
Impairment	-	-	-	-
Transfers*	-	-	-	-
At end of year	-	-	-	-

15.3 Net book value

Net book value at the beginning of the year	-	-	-	-
Net book value at the end of the year	-	-	-	-

15.4 Accounting policy

Please disclose the accounting policy for intangible fixed assets including:

Reasons for choosing amortisation rates

Policies for the recognition of any capital development

15.5 Impairment

This year:

Please provide a description of the events and circumstances that led to the recognition or reversal of an impairment loss.

--

Last year:

Please provide a description of the events and circumstances that led to the recognition or reversal of an impairment loss.

--

15.6 Revaluation

If an accounting policy of revaluation is adopted, please provide:

	This year	Last year
the effective date of the revaluation		
the name of independent valuer, if applicable		
the methods applied		
the carrying amount that would have been recognised had the assets been carried under the cost model.		

15.7 Other disclosures

(i) If your intangible asset was acquired by way of grant, provide value on initial recognition and carrying amount of the asset.

(ii) Details of the carrying amounts of any intangible assets to which the charity has restricted title or that are pledged as security for liabilities.

(iii) Please provide the amount of contractual commitments for the acquisition of intangible assets.

(iv) State the amount of research and development expenditure recognised as expenditure in the year.

(v) Please detail the headings in the SOFA in which a charge for amortisation of intangible assets is included.

(vi) For any material intangible assets, please provide a description, its carrying amount and any remaining amortisation period.

* The "transfers" row is for movements between fixed asset categories.

** Please indicate the method of depreciation by deleting the method not applicable (SL = straight line; RB = reducing balance). Also please indicate the rate of depreciation: for straight line, what is the anticipated life of the asset (in years); for reducing balance, what is the percentage annual deduction.

Section C **Notes to the accounts** (cont)

Note 16 **Heritage assets**

Please complete this note if the charity has heritage assets

16.1 General disclosures for all charities holding heritage assets

	This year	Last year
(i) Explain the nature and scale of heritage assets held.		
(ii) Explain the policy for the acquisition, preservation, management and disposal of heritage assets.		

16.2 Cost or valuation

	Heritage asset 1 £	Heritage asset 2 £	Heritage asset 3 £	Heritage asset 4 £	Total £
At beginning of the year	-	-	-	-	-
Additions	-	-	-	-	-
Disposals	-	-	-	-	-
Revaluations	-	-	-	-	-
Transfers *	-	-	-	-	-
At end of the year	-	-	-	-	-

16.3 Depreciation and impairments

**Basis						Straight Line ("SL") or Reducing Balance
** Rate						

At beginning of the year	-	-	-	-	-
Disposals	-	-	-	-	-
Depreciation	-	-	-	-	-
Impairment	-	-	-	-	-
Transfers*	-	-	-	-	-
At end of year	-	-	-	-	-

16.4 Net book value

Net book value at the beginning of the year	-	-	-	-	-
Net book value at the end of the year	-	-	-	-	-

16.5 Impairment

This year Please provide a description of the events and circumstances that led to the recognition or reversal of an impairment loss.	
---	--

Last year Please provide a description of the events and circumstances that led to the recognition or reversal of an impairment loss.	
---	--

16.6 Revaluation

If an accounting policy of revaluation is adopted, please provide:

	This year	Last year
the effective date of the revaluation		
the name of independent valuer, if applicable		
qualifications of independent valuer		
the methods applied and significant assumptions		
any significant limitations on the valuation		

16.7 Analysis of heritage assets by class or group distinguishing those at cost and those at valuation

	At valuation Group A £	At cost Group B £	Total £
Carrying amount at the beginning of the period	-	-	-
Additions	-	-	-
Disposals	-	-	-
Depreciation/impairment	-	-	-
Revaluation	-	-	-
Carrying amount at the end of period	-	-	-

16.8 Heritage assets (where heritage assets are not recognised on the balance sheet)

	This year	Last year
(i) Explain the reason why heritage assets have not been recognised on the balance sheet.		
(ii) Describe the significance and nature of heritage assets.		
(iii) Disclose information that is helpful in assessing the value of heritage assets.		
(iv) Explain the reason why it is not practicable to obtain a valuation of heritage assets.		

16.9 Five year summary of heritage assets transactions

	2015 £	2014 £	2013 £	2012 £	2011 £
Purchases					
Group A	-	-	-	-	-
Group B	-	-	-	-	-
Group C	-	-	-	-	-
Other	-	-	-	-	-
Donations					
Group A	-	-	-	-	-
Group B	-	-	-	-	-
Group C	-	-	-	-	-
Other	-	-	-	-	-
Total additions	-	-	-	-	-
Charge for impairment					
Group A	-	-	-	-	-
Group B	-	-	-	-	-
Group C	-	-	-	-	-
Other	-	-	-	-	-
Total charge for impairment	-	-	-	-	-
Disposals					
Group A - carrying amount	-	-	-	-	-
Group B - carrying amount	-	-	-	-	-
Group C	-	-	-	-	-
Other	-	-	-	-	-
Total disposals	-	-	-	-	-

Section C **Notes to the accounts** (cont)

Note 17 Investment assets

Please complete this note if the charity has any investment assets.

17.1 Fixed assets investments (please provide for each class of investment)

	Cash & cash equivalents	Listed investments	Investment properties	Social investments	Other	Total
Carrying (fair) value at beginning of period	-	-	-	-	-	-
Add: additions to investments during period*	-	-	-	-	-	-
Less: disposals at carrying value	-	-	-	-	-	-
Less: impairments	-	-	-	-	-	-
Add: Reversal of impairments	-	-	-	-	-	-
Add(deduct): transfer in(out) in the period	-	-	-	-	-	-
Add(deduct): net gain(loss) on revaluation	-	-	-	-	-	-
Carrying (fair) value at end of year	-	-	-	-	-	-

*Please specify additions resulting from acquisitions through business combinations, if any.

Please note that Fair Value in this context is the amount for which an asset could be exchanged between knowledgeable and willing parties in an arm's length transaction. For traded securities, the fair value is the value of the security quoted on the London Stock Exchange Daily Official List or equivalent. For other assets where there is no market price on a traded market, it is the trustees' or valuers' best estimate of fair value.

17.2 Please provide a breakdown of investments shown above agreeing with the balance sheet row B04 differentiating between those held at fair value and those held at cost less impairment.

This year:

Analysis of Investments

	Fair value at year end	Cost less impairment
	£	£
Cash or cash equivalents	-	-
Listed investments	-	-
Investment properties	-	-
Social investments	-	-
Other investments	-	-
Total	-	-
Grand total (Fair value at year end+Cost less impairment)	-	-

Last year:

Analysis of Investments

	Fair value at year end	Cost less impairment
	£	£
Cash or cash equivalents	-	-
Listed investments	-	-
Investment properties	-	-
Social investments	-	-
Other investments	-	-
Total	-	-
Grand total (Fair value at year end+Cost less impairment)	-	-

17.3 If your charity holds investment properties, please complete the following note:

	This year	Last year
(i) Explain the methods and significant assumptions in determining the fair value of investment property held by the charity		
(ii) Name or independent valuer, if applicable, and relevant qualifications		
(iii) Provide details of any restrictions on the ability to realise investment property or on the remittance of income or disposal proceeds		
(iv) Explain any contractual obligations for the purchase, construction or development of investment property or for repairs, maintenance or enhancements		

17.4 Please provide a breakdown of current asset investments, if applicable, agreeing with the balance sheet.

Analysis of current asset investments

	This year	Last year
	£	£
Cash or cash equivalents	-	-
Listed investments	-	-
Investment properties	-	-
Social investments	-	-
Other investments	-	-
Total	-	-

17.5 Guarantees

	This year	Last year
Please provide details and amount of any guarantee made to or on behalf of a third party		
Name of the entity or entities benefitting from those guarantees		
Please explain how the guarantee furthers the charity's aims		

17.6 Concessionary loans

	This year £	Last year £
Description		
Amount of concessionary loans made (Multiple loans made may be disclosed in aggregate provided that such aggregation does not obscure significant information).	-	-
	-	-
	-	-
Total	-	-

	This year £	Last year £
Description		
Amount of concessionary loans received (Multiple loans received may be disclosed in aggregate provided that such aggregation does not obscure significant information).	-	-
	-	-
	-	-
Total	-	-

	This year	Last year
Terms and conditions eg interest rate, security provided		
Value of any concessionary loans which have been committed but not taken up at the reporting date		
Amounts payable within 1 year		
Amounts payable after more than 1 year		
Amounts receivable within 1 year		
Amounts receivable after more than 1 year		

17.7 Additional information

	This year	Last year
Please provide information about the significance of investments to the charity's financial position or performance eg. terms and conditions of loans or the use of hedging to manage financial risk.		
For all investments measured at fair value, the basis for determining the value, including any assumptions applied when using a valuation technique.		
Where a charity has provided financial assets as a form of security, the carrying amount of the financial asset pledged as security and the terms and conditions relating to its pledge.		

Section C

Notes to the accounts

(cont)

Note 18

Stocks

Please complete this note if the charity holds any stock items

18.1 Please state the carrying amount of stock and work in progress analysed between activities.

	Stock		Donated goods		Work in progress
	For distribution	For resale	For distribution	For resale	
	£	£	£	£	£
Charitable activities:					
<i>Opening</i>	-	-	-	-	-
<i>Added in period</i>	-	-	-	-	-
<i>Expensed in period</i>	-	-	-	-	-
<i>Impaired</i>	-	-	-	-	-
<i>Closing</i>	-	-	-	-	-
Other trading activities:					
<i>Opening</i>	-	-	-	-	-
<i>Added in period</i>	-	-	-	-	-
<i>Expensed in period</i>	-	-	-	-	-
<i>Impaired</i>	-	-	-	-	-
<i>Closing</i>	-	-	-	-	-
Other:					
<i>Opening</i>	-	-	-	-	-
<i>Added in period</i>	-	-	-	-	-
<i>Expensed in period</i>	-	-	-	-	-
<i>Impaired</i>	-	-	-	-	-
<i>Closing</i>	-	-	-	-	-
Total this year	-	-	-	-	-
Total previous year	-	-	-	-	-

This year	Last year
£	£

18.2 Please specify the carrying amount of any stocks pledged as security for liabilities

Section C	Notes to the accounts	(cont)
------------------	------------------------------	---------------

Note 19 Debtors and prepayments

Please complete this note if the charity has any debtors or prepayments.

19.1 Analysis of debtors

Trade debtors

Prepayments and accrued income

Other debtors

Total

This year	Last year
£	£
-	-
-	-
-	-
-	-

Please complete 19.2 where a material debtor is recoverable more than a year after the reporting date.

19.2 Analysis of debtors recoverable in more than 1 year (included in debtors above)

Trade debtors

Prepayments and accrued income

Other debtors

Total

This year	Last year
£	£
-	-
-	-
-	-
-	-
-	-

Section C	Notes to the accounts	(cont)
-----------	-----------------------	--------

Note 20 **Creditors and accruals**

Please complete this note if the charity has any creditors or accruals.

20.1 Analysis of creditors

	Amounts falling due within one year		Amounts falling due after more than one year	
	This year £	Last year £	This year £	Last year £
Accruals for grants payable	-	-	-	-
Bank loans and overdrafts	-	-	-	-
Trade creditors	-	-	-	-
Payments received on account for contracts or performance-related grants	-	-	-	-
Accruals and deferred income	-	-	-	-
Taxation and social security	-	-	-	-
Loans	17,000	-	-	-
Total	17,000	-	-	-

20.2 Deferred income

Please complete this note if the charity has deferred income.

Please explain the reasons why income is deferred.

This year	Last year

Movement in deferred income account

Balance at the start of the reporting period
 Amounts added in current period
 Amounts released to income from previous periods
 Balance at the end of the reporting period

This year £	Last year £
-	-
-	-
-	-
-	-

Section C	Notes to the accounts	(cont)
------------------	------------------------------	---------------

Note 21 Provisions for liabilities and charges

Please complete this note if you have included in charity expenditure any provisions. A provision is made when the charity has a liability of uncertain timing or amount.

21.1 Movements in recognised provisions and funding commitment during the period

	This year £	Last year £
Balance at the start of the reporting period	-	-
Amounts added in current period	-	-
Amounts charged against the provision in the current period	-	-
Unused amounts reversed during the period	-	-
Balance at the end of the reporting period	-	-

21.2 Please provide:

- a brief description of any obligations on the balance sheet and the expected amount and timing of resulting payments;

- an indication of the uncertainties about the amount or timing of those outflows; and

- the amount of any expected reimbursement, stating the amount of any asset that has been recognised for that expected reimbursement.

This year	Last year

21.3 For any funding commitment that is not recognised as a liability or provision, provide details of commitment made, the time frame of that commitment, any performance-related conditions and details of how the commitment will be funded (with contracts for capital expenditure separately identified).

This year	Last year

21.4 Where unrestricted funds have been designated to a fund commitment, please disclose the nature of any amounts designated and the likely timing of that expenditure.

--	--

Section C	Notes to the accounts	(cont)
------------------	------------------------------	---------------

Note 22 Other disclosures for debtors, creditors and other basic financial instruments

22.1 Please provide information about the significance of financial instruments (eg. debtors, creditors, investments etc) to the charity's financial position or performance, for example, the terms and conditions of loans or the use of hedging to manage financial risk.

This year	Last year

22.2 If the charity has provided financial assets as a form of security, the carrying amount of the financial assets pledged as security and the terms and conditions related to its pledge should be given here.

--	--

Section C	Notes to the accounts	(cont)
------------------	------------------------------	---------------

Note 23 Contingent liabilities and contingent assets

23.1 Contingent liabilities

Where the charity has contingent liabilities, please complete the following section unless the possibility of their existence is remote.

This year

Description of item including its legal nature. Please describe any security provided in connection to the liability.	Estimate of financial effect
NONE	NONE

Last year

Description of item including its legal nature. Please describe any security provided in connection to the liability.	Estimate of financial effect

23.2 Contingent assets

Where the charity has contingent assets, please complete the following section when their existence is probable

This year

Description of item	Estimate of financial effect

Last year

Description of item	Estimate of financial effect

23.4 Other disclosures for contingent assets and/or liabilities

Please provide the following information where practicable:

Explain any uncertainties relating to the amount or timing of settlement; and the possibility of any reimbursement

Where it is not practical to make one or more of these disclosures, please state this fact

This year	Last year

Section C	Notes to the accounts	(cont)
------------------	------------------------------	---------------

Note 24 **Cash at bank and in hand**

Short term cash investments (less than 3 months maturity date)
 Short term deposits
 Cash at bank and on hand
 Other
 Total

This year £	Last year £
-	-
-	-
11,647	36,735
-	-
11,647	36,735

Section C	Notes to the accounts	(cont)
------------------	------------------------------	---------------

Note 25 Fair value of assets and liabilities

	This year	Last year
25.1 Please provide details of the charity's exposure to credit risk (the risk of incurring a loss due to a debtor not paying what is owed) , liquidity risk (the risk of not being able to meet short term financial demands) and market risk (the risk that the value of an investment will fall due to changes in the market) arising from financial instruments to which the charity is exposed at the end of the reporting period and explain how the charity manages those risks.		
25.2 Please give details of the amount of change in the fair value of basic financial instruments (debtors, creditors, investments (see section 11, FRS 102 SORP)) measured at fair value through the SoFA that is attributable to changes in credit risk.		

Section C	Notes to the accounts	(cont)
------------------	------------------------------	---------------

Note 26 **Events after the end of the reporting period**

Please complete this note events (not requiring adjustment to the accounts) have occurred after the end of the reporting period but before the accounts are authorised which relate to conditions that arose after the end of the

	This year	Last year
<p>Please provide details of the nature of the event</p>	<div style="border: 1px solid black; height: 100px; width: 100%;"></div>	<div style="border: 1px solid black; height: 100px; width: 100%;"></div>
	N/A	N/A
<p>Provide an estimate of the financial effect of the event or a statement that such an estimate cannot be made</p>	<div style="border: 1px solid black; height: 100px; width: 100%;"></div>	<div style="border: 1px solid black; height: 100px; width: 100%;"></div>
	N/A	N/A

Section C **Notes to the accounts** **(cont)**

Note 27 **Charity funds**

27.1 Details of material funds held and movements during the CURRENT reporting period

Please give details of the movements of material individual funds in the reporting period together with a balancing figure for 'Other funds'. The 'Total funds' figure below should reconcile to 'Total funds' in the balance sheet.

** Key: PE - permanent endowment funds; EE - expendable endowment funds; R - restricted income funds, including special trusts, of the charity; and U - unrestricted funds*

Fund names	Type PE, EE R or UR *	Purpose and Restrictions	Fund balances brought forward £	Income £	Expenditure £	Transfers £	Gains and losses £	Fund balances carried forward £
			-	-	-	-	-	-
N/A not material			-	-	-	-	-	-
			-	-	-	-	-	-
			-	-	-	-	-	-
			-	-	-	-	-	-
			-	-	-	-	-	-
			-	-	-	-	-	-
			-	-	-	-	-	-
			-	-	-	-	-	-
			-	-	-	-	-	-
			-	-	-	-	-	-
Other funds	N/a	N/a	-	-	-	-	-	-
Total Funds			-	-	-	-	-	-

Section C **Notes to the accounts** **(cont)**

Note 27 **Charity funds (cont)**

27.2 Details of material funds held and movements during the PREVIOUS reporting period

Please give details of the movements of material individual funds in the reporting period together with a balancing figure for 'Other funds'. The 'Total funds' figure below should reconcile to 'Total funds' in the balance sheet.

** Key: PE - permanent endowment funds; EE - expendable endowment funds; R - restricted income funds, including special trusts, of the charity; and U - unrestricted funds*

Fund names	Type PE, EE R or UR *	Purpose and Restrictions	Fund balances brought forward £	Income £	Expenditure £	Transfers £	Gains and losses £	Fund balances carried forward £
			-	-	-	-	-	-
N/A not material			-	-	-	-	-	-
			-	-	-	-	-	-
			-	-	-	-	-	-
			-	-	-	-	-	-
			-	-	-	-	-	-
			-	-	-	-	-	-
			-	-	-	-	-	-
			-	-	-	-	-	-
			-	-	-	-	-	-
			-	-	-	-	-	-
Other funds	N/a	N/a	-	-	-	-	-	-
Total Funds			-	-	-	-	-	-

Section C **Notes to the accounts** (cont)

Note 28 Transactions with trustees and related parties
If the charity has any transactions with related parties (other than the trustee expenses explained in guidance notes) details of such transactions should be provided in this note. If there are no transactions to report, please enter "True" in the box or "False" if there are transactions to report.

28.1 Trustee remuneration and benefits

This year
None of the trustees have been paid any remuneration or received any other benefits from an employment with their charity or a related entity (True or False) TRUE

In the period the charity has paid trustees remuneration and benefits. Please give the amount of, and legal authority for, any remuneration or other benefits paid to a trustee by the charity or any institution or company connected with it.

Name of trustee	Legal authority (eg order, governing document)	Amounts paid or benefit value				
		Remuneration	Pension contribution	Redundancy (including loss of office)/ex gratia	Other	TOTAL
		£	£	£	£	£
		-	-	-	-	-
		-	-	-	-	-
		-	-	-	-	-
		-	-	-	-	-

Please give details of why remuneration or other employment benefits were paid.

Where an ex gratia payment has been made to a trustee, provide an explanation of the nature of the payment.

Last year
None of the trustees have been paid any remuneration or received any other benefits from an employment with their charity or a related entity (True or False) TRUE

In the period the charity has paid trustees remuneration and benefits. Please give the amount of, and legal authority for, any remuneration or other benefits paid to a trustee by the charity or any institution or company connected with it.

Name of trustee	Legal authority (eg order, governing document)	Amounts paid or benefit value				
		Remuneration	Pension contribution	Redundancy (including loss of office)/ex gratia	Other	TOTAL
		£	£		£	£
		-	-	-	-	-
		-	-	-	-	-
		-	-	-	-	-
		-	-	-	-	-

Please give details of why remuneration or other employment benefits were paid.

Where an ex gratia payment has been made to a trustee, provide an explanation of the nature of the payment.

28.2 Trustees' expenses

If the charity has paid trustees expenses for fulfilling their duties, details of such transactions should be provided in this note. If there are no transactions to report, please enter "True" in the box below. If there are transactions to report, please enter "False".

No trustee expenses have been incurred (True or False) FALSE

Type of expenses reimbursed	This year	Last year
	£	£
Travel	2,792	-
Subsistence	-	-
Accommodation	-	-
Other (please specify):	-	-
	-	-
TOTAL	2,792	-

Please provide the number of trustees reimbursed for expenses or who had expenses paid by the charity 2

28.3 Transaction(s) with related parties

Please give details of any transaction undertaken by (or on behalf of) the charity in which a related party has a material interest, including where funds have been held as agent for related parties. If there are no such transactions, please enter 'true' in the box provided.

This year
There have been no related party transactions in the reporting period (True or False) TRUE

Name of the trustee or related party	Relationship to charity	Description of the transaction(s)	Amount	Balance at period end	Provision for bad debts at period end	Amounts written off during reporting period
			£	£	£	£

In relation to the transactions above, please provide the terms and conditions, including any security and the nature of any payment (consideration) to be provided in settlement.

For any related party, please provide details of any guarantees given or received.

Last year
There have been no related party transactions in the reporting period (True or False) TRUE

Name of the trustee or related party	Relationship to charity	Description of the transaction(s)	Amount	Balance at period end	Provision for bad debts at period end	Amounts written off during reporting period
			£	£	£	£

In relation to the transactions above, please provide the terms and conditions, including any security and the nature of any payment (consideration) to be provided in settlement.

For any related party, please provide details of any guarantees given or received.

Section C	Notes to the accounts	(cont)
-----------	-----------------------	--------

Note 29	Additional Disclosures
----------------	-------------------------------

The following are significant matters which are not covered in other notes and need to be included to provide a proper understanding of the accounts. If there is insufficient room here, please add a separate sheet.

--