

Charity Registration No. 1186731
Company Registration No. 06241076
England and Wales

YOH LTD

DIRECTORS' REPORT
and
EXAMINED FINANCIAL STATEMENTS
for the
YEAR ENDING 31st MARCH 2025

YOH LTD

COMPANY INFORMATION

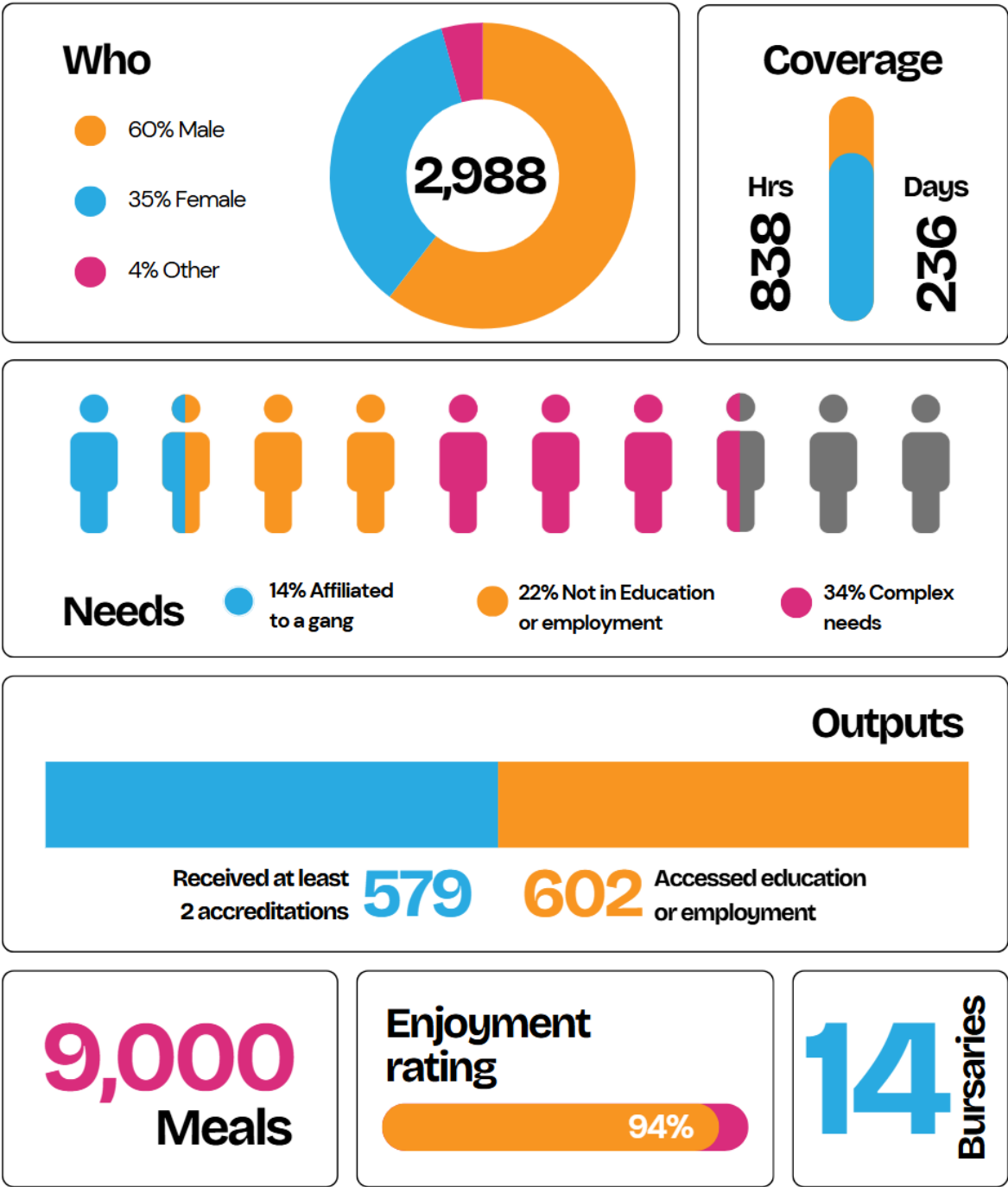
Directors	Mr Akif Tosuner Mrs Serpil Sahin Ms Denise Bruce
Charity Number	1186731
Company Number	06241076 Incorporated on 9 th May 2007
Registered Office	2-4 Phillipp Street Hackney London N1 5NU
Accountants	City Dockland Accountants 869 High Road Tottenham London N17 8EY
Service Address	2-4 Phillipp Street Hackney London N1 5NU

Table of Contents

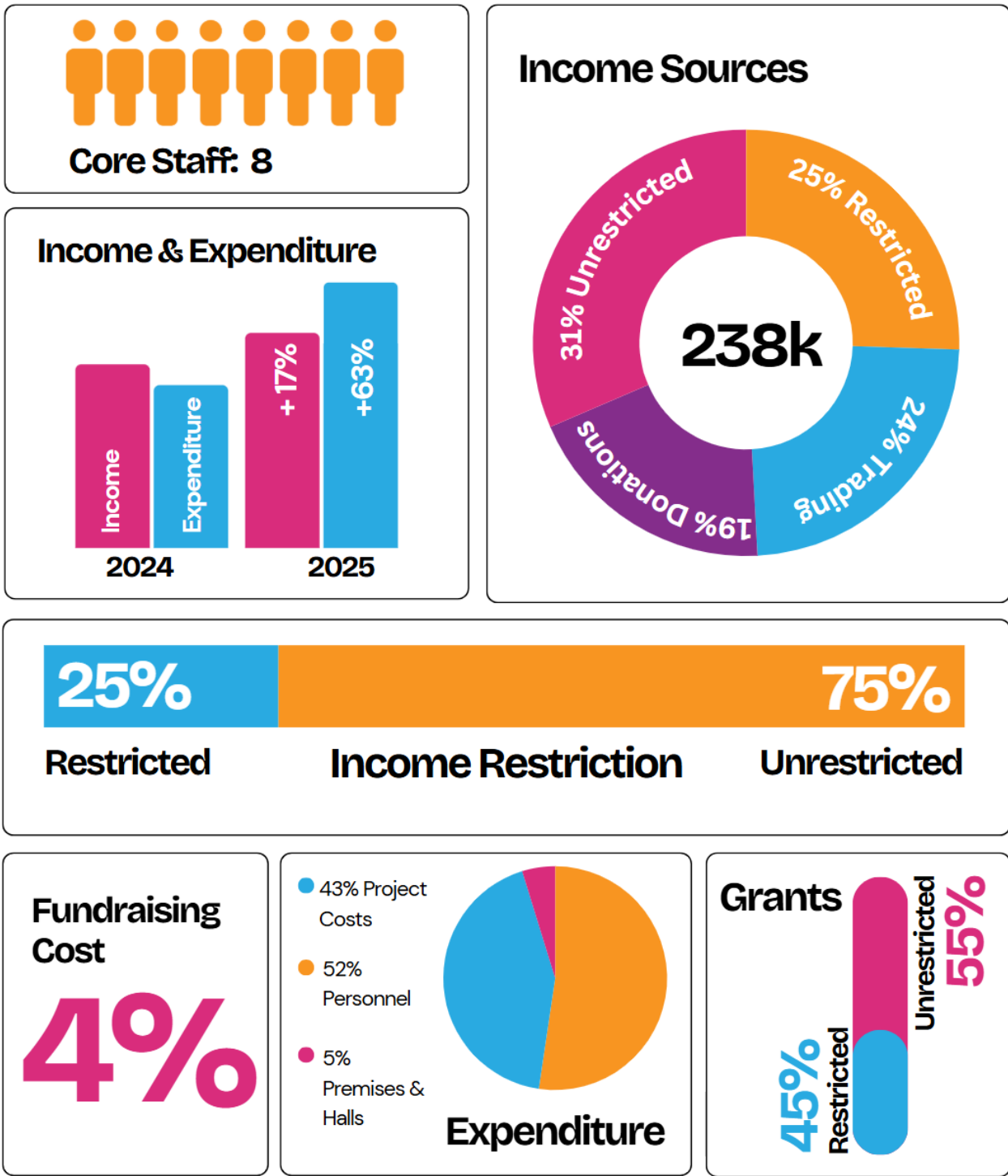
Summary Impact and Finance	1
IMPACT.....	1
FINANCIAL HIGHLIGHTS.....	2
Directors' Report	3
OBJECTIVES AND PURPOSE	5
OUR VALUES	6
THE YOH MODEL.....	7
MAJOR PROGRAMMES	8
EDUCATION AND EMPLOYMENT BURSARIES	8
DETACHED YOUTH WORK (STREET-BASED WORK)	8
FOOD PROVISION	8
PERSONAL AND CAPACITY DEVELOPMENT.....	9
ACCESS EDUCATION, EMPLOYMENT OR TRAINING (POSITIVE PATHWAYS).....	9
ENGAGEMENT AND IMPACT FIGURES.....	10
THE DIRECTORS AS AT 31 ST MARCH 2025	10
RELATIONSHIPS BETWEEN THE CHARITY AND RELATED PARTIES, INCLUDING ITS SUBSIDIARIES	10
VOLUNTEERS	10
ACCOUNTANTS REPORT TO THE BOARD OF DIRECTORS ON THE ANNUAL ACCOUNTS OF YOH LTD FOR THE YEAR ENDED 31ST MARCH 2025	11
Financial Statements	12
STATEMENT OF FINANCIAL ACTIVITIES INCLUDING A SUMMARY OF INCOME AND EXPENDITURE.....	12
BALANCE SHEET.....	13
NOTES.....	14

Summary Impact and Finance

Impact



Financial Highlights



Directors' Report

YOH LTD

Charity Registration No. 1186731

Company Registration No. 06241076

The trustees are pleased to present their annual report and accounts for the year ending 31st March 2025. They are proud of the charity's progress over the past year and its strong long-term financial position as of March 31st 2025. We are confident that the charity is well-positioned to sustain its vital work and continue making a positive impact in the foreseeable future.

The mounting pressure on communities and families is acutely affecting children and young people. While our sector has consistently demonstrated resilience and effectiveness in addressing these challenges, the necessary compromises may have long-term implications for future generations. For example, the urgent need to support children facing food insecurity is diverting resources from initiatives that enable young people to thrive. This example highlights the risk of creating an environment where our sector has to firefight a current crisis and a crisis that could have been prevented.

In this context, it is more important than ever to acknowledge and thank our dedicated supporters who have risen to the occasion. Their steadfast support has been crucial in addressing the needs of children and young people during these difficult times.

We sincerely thank the following organisations for their commitment:

- **Global Fund for Children**
- **East End Community Foundation**
- **Société Générale**
- **Hackney Holiday Activities and Food Programme**
- **UK Youth**
- **People's Health Trust**
- **Derwent London**
- **First Class Learning**
- **Microsoft**
- **Salesforce**
- **Google**

We are especially grateful for the ongoing support from **Damian Dwerryhouse**, whose financial and in-kind contributions continue to empower us to meet daily challenges.

Without the generosity and partnership of all these supporters, our capacity to respond effectively would be severely limited. Moving forward, we are committed to strengthening collaborations and innovating solutions to support children and young people, ensuring they experience equality and can access the opportunities and resources they need to thrive.



Finance Update

Building on last year's achievements, we are pleased to report a **17% increase in income**, driven by a strategic reduction in reliance on restricted grants. Our **unrestricted grants have surged by 220%**, and our **trading income has grown by 20%**, reflecting our resilient and expanding revenue streams. Additionally, we experienced our **strongest year in donations, which increased by 60%**, demonstrating strong community support.

We remain dedicated to our financial sustainability strategy, aiming to make our core services fully self-funded, especially as our sector navigates ongoing uncertainties. The success in fundraising has enabled us to advance to the next phase of our sustainability strategy by **investing in our business development**. To support this, we appointed a key colleague to work alongside the CEO and **strengthen our fundraising capacity**. While this investment involved short-term costs during recruitment and onboarding, it positions us for significant reserve growth in 2026.

Our proactive approach, coupled with our focus on sustainable growth, ensures we continue to serve our community effectively while safeguarding our future.



17% Increase in General Income
20% Growth in Trading Income
60% Rise in Donations

Objectives and Purpose

We are a **community-led** charity based in **East London, City Fringe Areas, and West Essex**, dedicated to supporting **marginalised**, vulnerable, and at-risk **children and young people aged 8 to 25**. Our mission is to spark **aspirations**, nurture essential **skills**, and build **confidence**, empowering young people to pursue **positive life goals** and achieve **economic independence**. We also provide a vital platform for their voices to be heard and for them to **influence change** within their communities.

To truly make a difference, we passionately engage children and young people in need who have '**slipped through the net**'. We prioritise engagement through **detached youth work** on estates, recognising the importance of connecting with **marginalised** young people. Many of our beneficiaries have been **exploited** by **gangs**, serve as **young carers**, and require **urgent fundamental support**, such as food banks, to help them survive and thrive.

Our guiding objectives are:

- To relieve the needs of young people through:
 - a) The provision of recreational and leisure activities in the interest of social welfare, designed to support mental health.
 - b) Providing support and activities, which develop their skills to enable them to participate in society as positive and responsible individuals.
 - c) Awarding scholarships, maintenance allowances or grants that support access to education that would otherwise be unreachable.
- The relief of financial hardship by providing services to develop capacity, increase opportunities and achieve financial independence.
- The promotion of equality and diversity for the public benefit by promoting activities that foster understanding between people from diverse backgrounds.
- Promote social inclusion for the public benefit by preventing people from becoming socially excluded, relieving the needs of those who are socially excluded, and assisting them in integrating into society.

*We want every child to have
a genuine chance in society.*

Our Values

Equity

We recognise the importance of empowering underrepresented groups and actively engaging those whom many services overlook. Socio-economic factors must be considered in community engagement to break cycles where some groups access numerous services while others are marginalised. By doing so, resources can be shared with communities that often hold the key to sustainable change, **preventing vocal groups from creating self-serving echo chambers.**

Listening

We believe every child and young person deserves to be heard without judgment, as this is essential to **understanding their needs** and empowering their voices in decision-making. While taking the time to listen and understand can be time-consuming and prone to bias, doing so intentionally drives meaningful impact and genuine change.

Individualised

We recognise the individuality of every child and young person, believing that each one deserves a truly personalised learning experience tailored to nurture and develop their unique potential. Our purpose is to ensure that every young person receives the support and educational environment they need to thrive, because **if one-size-fits-all solutions were effective, there would be no need for non-governmental organisations.**

Relationship Orientated

We are committed to ensuring every child and young person has access to meaningful, long-term relationships and support that inspire their journey toward positive outcomes. **Children are not incomplete projects**; like all humans, their support needs are complex, and lasting results are achieved when we earn their trust.

We need real change that starts with
engaging those we have ignored,
listening to their needs,
treating them as individuals
and building relationships.



The YOH Model

← children should be treated as a whole,
not as project beneficiaries

Here are the 16 impact measures we record and monitor to recognise the many factors affecting children and young people:

Stand Up

Shelter | Food | Safety | Communication

Fundamentally, every child has the right to feel safe, access nutritious food, find stability in a home, and communicate basic English skills. These foundational elements are vital for empowering a child to genuinely stand up in society.

When these needs are not fulfilled, typical visible signs include aggression, poor health, theft, and selfish behaviour.

Speak Up

Family | Friends | Social Networks and Influencers | Confidence

These building blocks help children engage with their environment, fostering belonging and love, which are key to happiness and compassion. Understanding society and building confidence in connections are vital for resilience and social integration. Developing a support network of family, friends, teachers, and community resources gives children tools to better understand and navigate their world.

Common symptoms linked to a deficiency of these needs include a lack of confidence, gang membership, extremism, and unrealistic expectations.

Aspire

Skills | Aspirations | Positivity | Control

To earn a meaningful place in society, young people must cultivate aspirations motivated by purpose and admiration. An initial interest in sports can blossom into a passion for hospitality, guiding them toward fulfilling careers. Exposure to diverse opportunities is vital, enabling them to discover their true calling.

Common symptoms linked to unmet needs include depression, drug use, persistent scepticism, extremism, and NEET (not in education, employment, or training).

Achievement

Education | Employment | Satisfaction | Leadership

Recognising achievements is vital at every stage of a young person's development. While education and work are seen as success indicators, our research shows that micro-achievements like punctuality, leadership, communication, and diplomacy help individuals build character. Celebrating these achievements and integrating them can guide young people to become purpose-driven role models with genuine potential.

Common signs of unmet needs include dropping out of EET (education, employment, or training), depression, reliance on the state, unhealthy habits, illegal activities, and a loss of motivation.

Major Programmes

Education and Employment Bursaries
Thanks to YOH's Reserves
<p>We recognise that many young people aspire to better opportunities, but complex financial barriers prevent them from accessing education and employment. Some of these young people have the academic achievements to attend university, but the need to earn money stops them from applying. Others receive job offers but cannot afford the costs of maintaining the job, such as clothing. Bursaries help young people overcome unjust barriers that prevent them from reaching their goals and contributing positively to society.</p>

Detached Youth Work (street-based work)
Engaged 2,998 children and young people
<p>Thanks to:</p> <ul style="list-style-type: none"> - Société Générale (www.societegenerale.co.uk/en/about/corporate-social-responsibility) - East End Community Foundation (www.eastendcf.org) - Global Fund for Children (www.globalfundforchildren.org) - YOH Reserves
<p>It is only by engaging those who are most in need that we can create change in our communities. The alternative is supporting young people who are already engaged, so we would just be another option. Young people who are not on anyone's radar are more likely to pose the greatest risks in our community, so it would not make sense to focus on anyone but this group. Our detached youth workers engaged those young people by delivering sessions on estates where they felt comfortable and developed enough trust to transition into sessions at one of our centres. These activities were naturally dynamic and unpredictable, so our team develops sessions and adjusts risk assessments in real time. They were also deeply rooted in our communities, so they were fully aware of community dynamics.</p>

Food Provision
471 children and young people accessed food and activities
<p>Thanks to the Holiday Activities and Food Programme – Hackney (education.hackney.gov.uk/content/holiday-activities-and-food-programme)</p>
<p>The programme provided nutritious meals and educational workshops for children from low-income families, enhancing their health, wellbeing, and learning. Besides food, the children had access to a warm and safe space during colder months and outdoor activities and trips during warmer months. They also learnt about using the public transport network and participated in activities that would otherwise be financially inaccessible.</p>

Personal and Capacity Development
579 Received at least two accreditations
<p>Thanks to:</p> <ul style="list-style-type: none"> - Global Fund for Children (www.globalfundforchildren.org) - Derwent London (www.derwentlondon.com/responsibility/social/community-fund) - First Class Learning (www.mtvh.co.uk) - People's Health Trust (www.peopleshealthtrust.org.uk)
<p>Without developing social skills, people can appear rude or unreliable. Sometimes, families of young people are so accustomed to having them around that they become a barrier for the young person. Therefore, it is crucial to provide a platform where young people can develop these essential soft skills. These activities were used to assess young people and enhance their personal skills. Furthermore, we delivered sessions to foster aspirations and strengthen their capacity to start their journey.</p>

Access Education, Employment or Training (positive pathways)
602 Entered employment or education
<p>Thanks to:</p> <ul style="list-style-type: none"> - Société Générale (www.societegenerale.co.uk/en/about/corporate-social-responsibility) - East End Community Foundation (www.eastendcf.org) - YOH Reserves
<p>These activities involved supporting young people in sustainable education, employment, or training. This was usually after a young person had developed their skills and capacity. The activities we provided were divided into three areas:</p> <p>Controlled experience We exposed young people to real-life working environments through internal work experience or with a partner. These placements tolerated common mistakes, so we encouraged learning from errors.</p> <p>Education, employment, or training We provided support to access actual positions chosen by young people. This included CV development, course selection, job searching, references, and Employment and Education Bursaries (above).</p> <p>Post EET support Once young people accessed their chosen pathway, we helped them overcome various hurdles. Common challenges included parent dependence on young people doing house chores, understanding line management, managing a bad day, getting on with colleagues, home routines, and employment/employer rights.</p>

YOH LTD

Charity Registration No. 1186731

Company Registration No. 06241076

Engagement and Impact Figures

Headline Performance Figures	2024 – 25
Beneficiaries	2,998
Affiliated with a gang	412
Not in education or employment	652
Those with complex needs	1,011
Launched their own business	4
Received at least two accreditations	579
Bursaries	14
Food & Essentials	8,923
Accessed education, employment or training	602
Beneficiary enjoyment rating	93.7%

The Directors as at 31st March 2025

Akif Tosuner

Serpil Sahin

Denise Bruce

Relationships between the charity and related parties, including its subsidiaries

There is no known relationship between any funder and any member of our Board of Trustees.

Volunteers

Volunteers make a valuable contribution to the efficient running of the organisation, and during the year, 17 volunteers supported our projects. There is a good volunteer placement scheme, support network, and help for volunteers to develop their skills.

This report has been prepared in accordance with the special provisions relating to small companies within Part 15 of the Companies Act 2006

On behalf of the board, and agreed on 3rd December 2025



Akif Tosuner

Trustee

ACCOUNTANTS REPORT TO THE BOARD OF DIRECTORS ON THE ANNUAL ACCOUNTS OF YOH LTD FOR THE YEAR ENDED 31st MARCH 2025

YOH LTD

Charity Registration No. 1186731

Company Registration No. 06241076

To assist you to fulfil your duties under the Companies Act 2006, we have complied for your approval the financial statements of YOH for the year ended 31st March 2025 from the company's accounting records and from information and explanations you have given us. We have used the Financial Reporting Standard applicable in the United Kingdom and Republic of Ireland (FRS 102) as a basis for our reporting.

Respective responsibilities

It is your duty to ensure that YOH has kept adequate accounting records and to prepare statutory financial statements that give a true and fair view of the assets, liabilities, financial position, and loss of YOH. You consider that YOH is exempt from the statutory audit requirement for the year.

We have performed certain procedures in respect of the Company's accounts for the year ended 31st March 2025 (which comprise the Income and Expenditure Account, the Balance Sheet, and the related notes), made enquiries of the Company's directors and assessed accounting policies adopted by the directors, in order to gather sufficient evidence for our conclusion in this report.

Basis of independent examiner's statement

Our examination was conducted in accordance with general Directions given by the Charity Commission. An examination includes a review of the accounting records kept by the charity and a comparison of the accounts presented with those records. It also includes consideration of any unusual items or disclosures in the accounts and seeking explanations from the trustees concerning any such matters. The procedures undertaken do not provide all the evidence that would be required in an audit, and the report is limited to those matters set out in the statement below.

Independent Examiner's Statement

Based on our work, nothing has come to our attention to refute the directors' confirmation that in accordance with the Companies Act 2006 the accounts give a true and fair view of the state of the Company's affairs as at 31st March 2025 and of its income for the year then ended and have been properly prepared in accordance with the Financial Reporting Standard for Smaller Entities.

In connection with our examination, no matter has come to our attention:

1. which gives us reasonable cause to believe that in, any material respect, the requirements:
 - to keep accounting records in accordance with section 41 of the 1993 Act; and
 - to prepare accounts which accord with the accounting records and comply with the accounting requirements of the 1993 Act have not been met; or
2. to which, in our opinion, attention should be drawn to enable a proper understanding of the accounts to be reached.

City Dockland
Accountants Ltd.

869 High Rd. Tottenham
London N17 8EY

+44(0) 20 7249 8658

+44(0) 7377 506 973

info@citydockland.com

YOH LTD

Charity Registration No. 1186731

Company Registration No. 06241076

Financial Statements**Statement of financial activities including a summary of Income and Expenditure**

For activities between

1st April 2024 and 31st March 2025

Income	Note	Unrestricted	Restricted	Total	2024
Grants	2	74,737	60,575	135,312	126,595
Trading	3	56,159	-	56,159	46,750
Donations	4	46,068	-	46,068	28,877
Other		258	-	258	865
Total income	5	177,221	60,575	237,796	203,087
Expenditure					
Direct activities	6	2232,362	52,215	284,577	176,344
Raising funds	7	9,199	-	9,199	3,720
Total expenditure		241,562	52,215	293,777	180,064
Net income/(expenditure)	8	(64,340)	8,948	(55,980)	23,023
Transfer between funds		8,360	(8,948)	-	-
Net movement in funds		(55,980)	-	(55,980)	23,023
Total funds brought forward		77,476	-	77,476	54,453
Total fund carried forward	9	21,496	-	21,496	77,476

YOH LTD

Charity Registration No. 1186731

Company Registration No. 06241076

Balance sheet

For activities between

1st April 2024 and 31st March 2025

	Note	Unrestricted	Restricted	Total	2024
Fixed assets					
Tangible assets	10	29,663	-	29,663	29,008
Total fixed assets		29,663	-	29,663	29,008
Current Assets					
Cash at bank and in hand		4,314	8,360	12,674	59,168
Debtors	11	17,250	-	17,250	44,795
Total current assets		21,564	8,360	29,924	103,963
Creditors: amounts falling due within one year		-	-	-	-
Net current assets/(liabilities)		21,564	8,360	29,924	103,963
Total assets less current liabilities		51,228	8,360	59,588	132,971
Creditors: amounts falling due after one year	12	38,091	-	38,091	55,495
Total net assets or liabilities	13	13,136	8,360	21,496	77,477
Funds of the Charity					
Unrestricted Surplus Funds		(55,980)	-	(55,980)	23,023
Reserves b/f		77,477		77,477	54,453
Total funds of the Charity			-	21,496	77,477

The company was entitled to exemption from audit under s477 of the Companies Act 2006 relating to small companies. The members have not required the company to obtain an audit in accordance with section 476 of the Companies Act 2006. The directors acknowledge their responsibilities for complying with the requirements of the Companies Act with respect to accounting records and the preparation of accounts.

These accounts have been prepared in accordance with the provisions applicable to small companies subject to the small companies' regime and in accordance with FRS102 SORP.

Approved by the Board for issue on 3rd December 2025

ATOSUNER

Akif Tosuner

Trustee

YOH LTD

Charity Registration No. 1186731

Company Registration No. 06241076

Notes

For accounts between

1st April 2024 and 31st March 2025**1.1 Basis for accounting**

The company was entitled to exemption from audit under s477 of the Companies Act 2006 relating to small companies.

The members have not required the company to obtain an audit in accordance with section 476 of the Companies Act 2006.

The directors acknowledge their responsibilities for complying with the requirements of the Companies Act with respect to accounting records and the preparation of accounts.

These accounts have been prepared in accordance with the provisions applicable to small companies subject to the small companies regime and in accordance with FRS102 SORP.

1.2 Going concern

The accounts have been prepared on a going concern basis. The charity has sufficient assets to continue for the foreseeable future. Furthermore, the charity has diversified its income, making it less reliant on individual sources.

2 Grants

Two key types of grants

Restricted	60,575
Hackney Holiday Food and Activities Programme	24,000
Societe Generale & EECF	23,360
People Health Trust	9,015
Derwent London	4,200
Unrestricted	74,737
Global Fund for Children	56,237
UK Youth	18,500

3 Trading income

Services provided	56,159
-------------------	---------------

4 Donations

Donations by local people and businesses	46,068
--	---------------

5 Income Analysis**Income Sources – Five Sources**

Unrestricted Grants	74,737	31%
Restricted Grants	60,575	25%
Trading Income	56,159	24%
Donations	46,068	19%
Other	258	<1%

Restriction of funds

Total Restricted Funds	103,256	75%
Total Unrestricted Funds	99,831	25%

YOH LTD

Charity Registration No. 1186731

Company Registration No. 06241076

6	Charitable activities		
	Personnel and associated costs		148,734
	Cost of activities		121,841
	Premises and hall hire		13,537
	Marketing		465
7	Raising funds		
	Cost of raising funds		9,199
	% of income		4%
8	Surplus/Deficit		
	Year ending 2025	(55,980)	
	Year ending 2024	23,023	
	<i>Difference</i>	<i>- 79,003</i>	
9	General Analysis		
	How our income was used		
	Charitable activities	81%	
	Raising funds	4%	
	Reserves	-24%	
10	Fixed Assets		
	Software and Technology		24,648
	Equipment		5,015
11	Debtors		
	Global Fund for Children		17,250
12	Other Creditors		
	The charity has used long-term social investment to develop its sustainability:		
	Social Investment Business Loan		33,025
	BBLs Loan		5,066
13	Total funds of the Charity		
	Reserves Brought forward from 2024		77,477
	Loss 2025		(55,980)
	Reserves Carried forward		21,496