

THE AWEN PROJECT

England & Wales · Charity number 1186305

Details

Status Registered

Legal form CIO

Registered 2019-11-12

Register [View on the Charity Commission register](#)

Contact

Address 58 Glamorgan Street
Barry
South Glamorgan
CF62 6JN

Phone 01446 000000

Email hello@theawenproject.com

Website www.theawenproject.com

Activities

Objects: TO ADVANCE EDUCATION FOR THE PUBLIC BENEFIT BY THE ESTABLISHMENT OF, OR ASSISTING IN THE ESTABLISHMENT OF, SCHOOLS THAT ARE GOVERNED BY PARTICIPATORY DEMOCRACY

Activities: The Awen Project is pioneering a human-centred model for education where children are valued as people in their own right within in a community. Our vision is to co-create a network of learning communities throughout the world where every human is valued. Our team of creative facilitators are developing a relationship-based pedagogy that will form the basis of a new model for education.

Classification

- **How:** Provides Buildings/facilities/open Space, Provides Services, Provides Advocacy/advice/information
- **What:** Education/training, Arts/culture/heritage/science, Environment/conservation/heritage, Economic/community Development/employment, Human Rights/religious Or Racial Harmony/equality Or Diversity
- **Who:** Children/young People, The General Public/mankind

Geography

- Throughout England And Wales

Finances

Period end	Income	Expenditure	Assets	Employees
2025-08-31	£86,569	£67,382	-	-
2024-08-31	£53,370	£60,428	-	-
2023-08-31	£63,850	£73,723	-	-
2022-08-31	£9,400	£47,783	-	-
2021-08-31	£80,000	£47,122	-	-
2020-08-31	£166,367	£141,592	-	-

Trustees

Name	Role	Appointed
Charlotte Maria Church	Chair	2019-10-30
John Farrell		2021-06-14
Sean Bellamy		2021-05-10
Stella Smith		2021-05-10

THE AWEN PROJECT

England & Wales - Charity number 1186305

Accounts



THE **AWEN PROJECT**
Trustees Annual Report and
Financial Statements
Year ended 31 August 2025

“Awen has meant that my daughter isn’t just ‘back’ but she’s where she was always meant to be”

(Awen parent)



Contents

Welcome	4
Trustees' annual report	5
Objectives	5
Activities	5
Achievements and performance	6
Impact Report 2025	7
Goals for 2025/26	8
Financial review	9
Structure, governance and management	9
Legal and administrative information	10
Statement of Board of Trustees' responsibilities	10
Tribe member spotlight	12
Independent examiner's report	13
Statement of financial activities	14
Balance sheet	15
Notes to the financial statements	16

Welcome

This year has been one of both extraordinary highs and significant challenge for The Awen Project. We have seen our community, our Tribe, grow in confidence, creativity and ambition, achieving things that once felt far beyond reach. From young people leading their own events, producing magazines and original artwork, to travelling internationally and performing at a festival, the breadth of what has been possible is something we are deeply proud of.

Alongside this, we have welcomed new families, new collaborators and an increasing number of funders and supporters who recognise the importance and potential of our work. There is a growing sense that what we are building, a creative, democratic and community-led approach to education, is not only needed, but gaining real momentum.

This progress has not come without difficulty. The unexpected loss of the land we had called home for several years was both practically and emotionally significant. It disrupted our plans, placed pressure on our resources and challenged our sense of stability at a crucial time. Yet, in response, we have experienced an outpouring of support from our wider community, reminding us that Awen is not defined by a place, but by the people and values that sustain it.

Despite these challenges, our focus remains unchanged. We continue to work towards a future where education is meaningful, creative and shaped democratically by the young people and families it serves. As we reflect on how far we have come, from an idea rooted in passion to a growing, resilient community, we move forward with renewed determination, supported by those who believe in what we are building.

We are still here. We are still growing. And we are just getting started.

Charlotte Church

FOUNDER AND CHAIR OF TRUSTEES

THE AWEN PROJECT

Trustees' annual report

The Board of Trustees, submit their annual report and the financial statements of The Awen Project for the year ended 31 August 2025.

The Board of Trustees confirms that the annual report and financial statements of the Charity comply with current statutory requirements, including the Charity Act 2011, as well as the requirements of the Charity's governing document and the provisions of the 'Charities SORP (FRS 102) - Accounting and Reporting by Charities: Statement of Recommended Practice applicable to charities preparing their accounts in accordance with the Financial Reporting Standard applicable in the UK and Republic of Ireland (FRS 102) second edition (effective 1 January 2019)', the Financial Reporting Standard applicable in the UK and Republic of Ireland (FRS 102).



Objectives

The Awen Project is a Charitable Incorporated Organisation (CIO), registered with the Charity Commission for England and Wales (Charity number: 1186305).

The objects of The Awen Project are to advance education for the public benefit by the establishment of, or assisting in the establishment of, schools that are governed by participatory democracy.

Our aim is to pioneer a new model for education that is democratic, free-to-attend, and human-centred. We empower young people as participants within learning community by providing conditions supportive of learning (rather than teaching) and supporting families to facilitate their children's education.

The Trustees have referred to the Charity Commission's guidance on public benefit when reviewing the Charity's objectives and activities.

Activities

The Awen Project is pioneering a human-centred model for education where children are valued as people in their own right who are allowed to be themselves as active participants in a community. We support them to become healthy, informed, and responsible members of a global society. Today we are running a learning community based in Dinas Powys, South Wales, developing our expertise and approach in partnership with leading experts in education and human development. We plan to extend our impact on the education system through building our home community and welcoming more students and families, piloting our Awen Lite programme that welcomes mainstream educated children and is a potential revenue stream to support the project, and offering training to teachers and education practitioners.

Our vision is to co-create a network of learning communities throughout the world where every human is valued. An Awen education empowers at all levels by training and supporting parents and carers to be present in their children's education, bringing meaning and purpose to everyone in the community. Our team of creative facilitators are developing a relationship-based pedagogy that will form the basis of a new model for education – to replicate around the world, not for our profit but for the profit of future generations.

Over the last year major progress was made in the following areas:

- Linked up with a democratic school in Italy on our second overseas trip.
- Performed at a major music festival
- Continued to develop our site
- Started to deliver more outreach



Achievements and performance

Our year:

This has been a landmark year of creativity, courage and growth for The Awen Project.

One of the defining moments of the year was our international programme in Venice, funded by the Taith. This was not simply a visit, but a deeply embedded learning journey. Young people explored the social and economic context of Italy, learned elements of the Italian language, studied *The Merchant of Venice*, and immersed themselves in Renaissance art, producing their own work inspired by the period and crafting traditional Venetian masks. Alongside this, they developed vital life skills, taking ownership of elements of the trip itself, including planning travel, organising accommodation and navigating a new country together.



The group also created a powerful legacy of the experience through a self-produced film, written, directed, filmed and performed entirely by the young people, which premiered to a live audience at Big Love Festival. This moment captured not only their creativity, but their ability to collaborate, reflect and tell their own stories with confidence.



Music has been another major thread this year. Young people formed a band, developed their sound collectively and performed at a series of events, culminating in a main stage performance at Big Love Festival. Watching them step into that space, owning it with confidence and presence, was a powerful reflection of their growth.

The Tribe also planned, coordinated and curated the Kids field at the festival - having direct experience of event planning, budgeting, working with children and parents, logistics and so much more. It was a huge success (bar some little bit of rain! Bah!)

Our annual exhibition, "The Cow", once again showcased the extraordinary breadth and depth of creative work across the Tribe. From photography and ceramics to stop-frame animation, poetry and mixed media, the exhibition celebrated not only output but the process, curiosity and commitment behind it.



This year also marked an emotional milestone as we said goodbye to one of our original Awenites, Osian, who has gone on to attend an international school in Bosnia. This is a huge achievement and a powerful example of the journeys our young people are capable of. We are immensely proud to have been part of his story.

Following the loss of our previous site, we have begun establishing a new home in Wenvoe. This transition has brought challenge, but also opportunity. Young people have been actively engaging with the new landscape, learning about local ecosystems and beginning to shape what Awen looks like in this next chapter.

We have also expanded our reach significantly. Through support from National Lottery Community Fund Awards for All funding, we have launched an outreach bus, enabling us to take Awen beyond a fixed location and into the wider community, connecting with families who may not otherwise have access to our work.

Across the year, we have directly supported around 25 young people aged 11–16, with our wider community now reaching over 100 beneficiaries including families. We have delivered dozens of creative sessions, multiple public performances, an international exchange, and a major public exhibition, all led by the energy, ideas and commitment of our Tribe.

With continued support from Taith, Awards for All and an increasing number of major donors, we are entering the coming year with real momentum. What we are seeing now is not just participation, but leadership; young people shaping their own learning, their community and their futures.

Being in nature:

As usual we have spent almost all of our time outdoors. Being in a new outdoor space allows us to learn about new wildlife, new flowers and fauna and thinking about space differently.

We have designed and created our home complete with fire pit for outdoor cooking, compost toilet and canopy so that we can continue to be with the environment come rain or shine.



Awen families:

The Awen family is thriving and our volunteer groups have really gotten into the swing of things. We continue to do regular training sessions with the teams and they are now organised into Social Media, Events and fundraising, Grants, Land and Onboarding - so everyone has a strong role to play in the Village.

Impact Report 2025

Since joining Awen we have seen some amazing improvements in learning and well-being.

Our work has had a meaningful impact this year:

44% Increase in focus

56% Increase in Communication skills



We also saw a significant improvement in engagement in learning:

84% Reported feeling confident co-creating projects

81% Reported feeling like they've learned new skills that they will use in the future

And we are happy to see excellent results in the way our young people think about society around them.

75% Reported in commitment to democratic practice

Goals for 2025/26

We are looking to secure land ourselves - and are awaiting the outcome of a national lottery application which will include some capital money to buy our own space. That is the focus so that we can build on all of our achievements over the last few years - but solidify them into something that is more secure.

We will also be looking to continue to build on Wild Journeys and how we can maximise our income generating while furthering our learning.

Our focus here will be on building social enterprise within our village and we will be planning to look at creative and interesting revenue.

We are looking to replace our parent trustee role who can represent our young people at board level.

Fundraising

We saw a large increase in our fundraising this year which is great.

Thank you to Taith who funded our Venice trip and learning as well as The National Lottery awards for all who have awarded us a grant for a new bus - watch out South Wales!

Our target is still to raise £120k – £150k to cover core operating costs for the next two years. In this time, we will establish a set of income streams and develop a regular-giving base. We believe that philanthropic / major donors will offer the best chances of success and enable us to develop a network of partners who support our vision of a new, more human form of education.

We will continue with ideas for Wild Journeys - still focussing our partnerships on referral agencies like Youth Service and other learning clubs where there may be budgets to support the young people but also increasing our scope to a social enterprise and other community activities.

We will continue to improve fundraising infrastructure, in particular the Awen Project's website, mailing list, and social media. Using these tools effectively will enable us to make the most of engagement with like-minded families and supporters to grow our community and raise funds.

Educational practices

- We will continue to evolve in our reflective practices and working to establish best practice
- We will make partnerships and allies in the progressive education network following from a positive conference visit this year - and continue to integrate ourselves in the growing sector.
- Continue to find ways to monitor and evaluate the learning journey
- Continue to find ways to integrate progressive learning outcomes in mainstream society post Awen.

Looking outwards

- Bring together like-minded parents and educators and support them to establish an Awen (or Awen-inspired) setting in their local community. Through collaborating with others, we will necessarily take a critical look at our own ways of being and doing at the same time as nurturing a new educational setting
- Talk about our work, our approach, and why this is an important (and under-valued) educational discussion. Collaborate with other Learning Communities to critique and support each other and develop practice across

our wider community.

Financial review

During the current financial year, the charity achieved a surplus of £19,187 (2024: deficit of £7,058), increasing total reserves at year end to £21,526 (2024: £2,339). Income for the year was £86,569 (2024: £53,370) and expenditure was £67,382 (2024: £60,428).

Of the reserves held at year end £21,526 (2024: £2,339) were unrestricted in nature.

Reserves policy

The trustees are currently in the process of putting together a formal reserves policy, however the current reserves of £21,526 (2024: £2,339) are deemed sufficient for the stage at which the Charity currently is and the current financial obligations of the organisation.

Structure, governance and management

Governing document

The Charity was registered on 12 November 2019 as a charitable incorporated organisation (CIO) governed by its constitution and whose only voting members are the Trustees.

Recruitment and appointment of Trustees

Trustees are elected onto the Board through nomination by the current Trustee Board. New Trustees are provided with an induction by the current members.

Under the governing document, the number of Trustees shall not be less than three with no maximum number. A quorum is formed when one half of the Trustees are present or three, whichever is the greater number. All decisions are made by the Trustees.

Risk management

The trustees review, on an annual basis, the major risks which the charity faces to ensure that it has sufficient resources in the event of adverse conditions. The trustees have examined the operational and business risks which the charity faces and confirm that they are satisfied that systems and controls are established over key financial systems to mitigate any significant risks.

The main risks facing the Charity are as follows:

Education Outcomes, Legislation, and Compliance

Working with young people is a privilege that comes with significant responsibility. In promoting an alternative approach to mainstream education, we must not assume that because we have positive intent that this will automatically yield positive results for the young people in our care.

To ensure the well-being and development of our young people:

- We work with experts to inform our approach and ensure we are guided by research and the experience of more established democratic schools;
- Students participate in weekly coaching sessions to discuss their aims, progress, and any challenges they may currently be facing;
- Students complete regular self-assessments to understand how they are developing across a range of holistic measures (a broader set of measures than mainstream schools, that includes academic outcomes);
- We engage our parents / carers as partners in their children's education, which necessitates far better, deeper, and more frequent dialogue than would be normal for a mainstream setting;
- Most importantly, we listen to our young people: they are in charge of their own learning, with choice and real power over what they do and how their community is run.

There are many laws and regulations that govern the education and care of young people. We currently operate as a

learning community of Elective Home Educated children and our provision is for fewer than 17 hours per week / 50% of a standard school week.

Financial sustainability

We are a young organisation and have not yet established reliable income sources with which to sustain ourselves over the longer term. To address this we are engaging with potential donors to provide further funding, with support from experienced fundraisers. Covid-19 has materially affected trusts and foundations resulting in a more challenging funding environment, especially for less well established charities like us.

There are opportunities for us to create reliable income streams by expanding our offering to include mainstream educated children and teachers, and we plan to launch pilot programmes over the next 12 months to test the market.

Health and safety

As our community is based primarily in the forest, there are many risks we need to be aware of and these change over time, for example trees may fall down after a storm and high winds make the site unsafe. In addition to basic safety checks and policies, our students perform regular site audits. We have appropriate insurance in place for an education setting, including public liability insurance.

Legal and administrative information

Charity name

The Awen Project

Charity registration no.

1186305

Company registration no.

CE019562

Registered office

58 Glamorgan Street
Barry
South Glamorgan
CF62 6JN

Trustees

Charlotte Church	Chair
Sean Bellamy	
John Farrell	
Stella Smith	

Independent examiner

Enaid Accountancy Ltd
Platform 10 Engine Rooms
Hood Road
Barry
CF62 5QL

Statement of Board of Trustees' responsibilities

The Trustees are responsible for preparing the Trustees' Annual Report and the financial statements in accordance with applicable law and regulations.

Charity law requires the Trustees to prepare financial statements for each financial year. Under that law they are required to prepare the financial statements in accordance with UK Accounting Standards and applicable law (UK Generally Accepted Accounting Practice), including FRS 102 The Financial Reporting Standard applicable in the UK and Republic of Ireland.

Under charity law the Trustees must not approve the financial statements unless they are satisfied that they give a 'true and fair' view of the state of affairs of the Charity and of the excess of income over expenditure for that period. In preparing these financial statements, the Trustees are required to:

- select suitable accounting policies and then apply them consistently;
- make judgements and estimates that are reasonable and prudent;
- state whether applicable UK Accounting Standards have been followed, subject to any material departures disclosed and explained in the financial statements; and,
- prepare the financial statements on the going concern basis unless it is inappropriate to presume that the Charity will continue its activities.

The Trustees are responsible for keeping adequate accounting records that are sufficient to show and explain the Charity's transactions and disclose with reasonable accuracy at any time the financial position of the Charity and enable them to ensure that the financial statements comply with the Charities Act 2011. They have general responsibility for taking such steps as are reasonably open to them to safeguard the assets of the Charity and to prevent and detect fraud and other irregularities.

The Trustees are responsible for the maintenance and integrity of the corporate and financial information included on the Charity's website.

Legislation in the UK governing the preparation and dissemination of financial statements may differ from legislation in other jurisdictions. In addition, the Trustees confirm that they are happy that the content of the Annual Review in pages 5-11 meet the requirements of the Trustees' Annual Report under charity law.

They also confirm that the financial statements have been prepared in accordance with the accounting policies set out in the notes to the accounts and comply with the Charity's governing document, the Charities Act 2011 and Accounting and Reporting by Charities: Statement of Recommended Practice applicable to charities preparing their accounts in accordance with FRS 102, The Financial Reporting Standard applicable in the UK and Republic of Ireland published on 16 July 2014.

This report was approved and authorised for issue by the Board of Trustees on xx xxxx 2026 and signed on its behalf by:

CHARLOTTE CHURCH

FOUNDER AND CHAIR OF TRUSTEES

Tribe member spotlight: Tilly (11)

Tribe Member

Tilly joined Awen this year - after trying out Welsh Medium high school in the Vale of Glamorgan.

In Tilly's words'

Hi, I'm Tilly and I joined Awen this year.

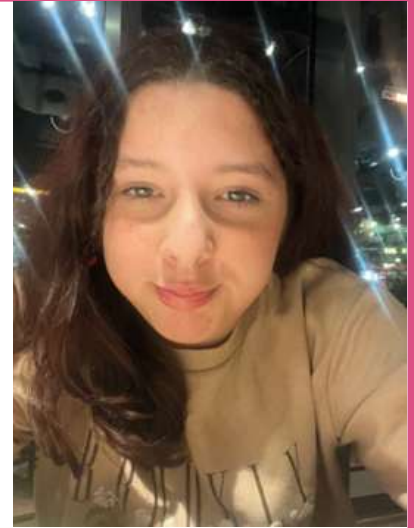
Before this, I was in mainstream school and I always thought I would be fine there. I didn't really worry about it, I just assumed that was what everyone did and that it would work for me too. But when I look back now, I can see that I was actually really anxious a lot of the time. I didn't notice it properly then, but being in a classroom, sitting still and looking at the same four walls all day just didn't feel right for me.

I realised quite quickly that I learn differently. I like to be moving, making things, being outside, and actually doing something instead of just being told about it. At school, I found it hard to focus and hard to be myself. I even lost my confidence and didn't want to speak up in class. It was a surprise because I had never really felt like that before. Every morning I woke up I would dread the day ahead.

Since joining Awen, I feel like a completely different person. I'm more confident, I talk to more people, and I'm not as worried about getting things wrong. I've done things I never thought I would do, like performing, making art, and being part of group projects where everyone's ideas matter.

One of my favourite things is that learning doesn't feel forced. It feels natural, like you're just exploring things together and discovering what you're interested in. I feel like people actually listen to me here.

Awen has helped me realise that there isn't just one way to learn, and that the way I learn is actually a good thing. It's made me feel more like myself again.



Independent examiner's report

I report to the trustees on my examination of the accounts of The Awen Project (charity number 1186305) for the year ended 31 August 2025 set out on pages 13 to 22.

Respective responsibilities of trustees and examiner

The CIO's trustees are responsible for the preparation of the accounts in accordance with the requirements of the Charities Act 2011 (the Charities Act). The CIO's trustees consider that an audit is not required for this year under section 144 of the Charities Act and that an independent examination is needed.

It is my responsibility to:

- examine the accounts under section 145 of the Charities Act;
- to follow the procedures laid down in the general Directions given by the Charity Commission under section 145(5)(b) of the Charities Act; and,
- to state whether particular matters have come to my attention.

This report, including my statement, has been prepared for and only for the CIO's trustees as a body. My work has been undertaken so that I might state to the CIO's trustees those matters I am required to state to them in an independent examiner's report and for no other purpose. To the fullest extent permitted by law, I do not accept or assume responsibility to anyone other than the CIO and the CIO's trustees as a body for my examination work, for this report, or for the statements I have made.

Basis of independent examiner's statement

My examination was carried out in accordance with general directions given by the Charity Commission. An examination includes a review of the accounting records kept by the CIO and a comparison of the accounts presented with those records. It also includes consideration of any unusual items or disclosures in the accounts, and seeking explanations from the trustees concerning any such matters.

The procedures undertaken do not provide all the evidence that would be required in an audit, and consequently no opinion is given as to whether the accounts present a 'true and fair' view and the report is limited to those matters set out in the statement below.

Independent examiner's statement

I have completed my examination. I confirm that no material matters have come to my attention in connection with the examination giving me cause to believe that in any material respect:

- accounting records were not kept in respect of the CIO as required by section 130 of the Act; or
- the accounts do not accord with those records; or
- the accounts do not comply with the applicable requirements concerning the form and content of accounts set out in the Charities (Accounts and Reports) Regulations 2008 other than any requirement that the accounts give a 'true and fair' view which is not a matter considered as part of an independent examination.

I have no concerns and have come across no other matters in connection with the examination to which attention should be drawn in this report in order to enable a proper understanding of the accounts to be reached.

ANDREW PHILIP NASH FCA

MEMBER OF THE INSTITUTE OF CHARTERED ACCOUNTANTS IN ENGLAND AND WALES – 2461833

DATED: XX XXXX 2026

Enaid Accountancy Ltd
Platform 10 Engine Rooms
Hood Road
Barry
CF62 5QL



Statement of financial activities

For the year ended 31 August 2025

		Unrestricted	Restricted	Total	Total
		Funds	Funds	Funds	Funds
		Year ended	Year ended	Year ended	Year ended
		31 Aug 2025	31 Aug 2025	31 Aug 2025	31 Aug 2024
	Notes	£	£	£	£
Income from:					
Donations and legacies	3	81,335	-	81,335	49,281
Other trading activities	4	5,234	-	5,234	4,089
Total income		86,569	-	86,569	53,370
Expenditure on:					
Charitable activities	5	67,382	-	67,382	60,428
Total expenditure		67,382	-	67,382	60,428
Net income/(expenditure)		19,187	-	19,187	(7,058)
Reconciliation of funds:					
Balance brought forward	9 & 10	2,339	-	2,339	9,397
Balance carried forward	9 & 10	21,526	-	21,526	2,339

The notes on pages 16 to 23 form part of the financial statements.

All the above results arise from continuing activities.

There were no other recognised gains or losses other than those stated above.

Balance sheet

As at 31 August 2025

	Notes	Total Funds	
		31 Aug 2025	31 Aug 2024
		£	£
Fixed assets			
Tangible fixed assets	6	230	1,030
Current assets			
Debtors	7	4,295	4,851
Cash at bank and in hand		<u>21,516</u>	<u>2,646</u>
Total current assets		25,811	7,497
Creditors:			
amounts falling due within one year	8	<u>(4,515)</u>	<u>(6,188)</u>
Net current assets		21,296	1,309
Net assets		21,526	2,339
Funds of the charity:			
Unrestricted funds			
General funds	9 & 10	<u>21,526</u>	<u>2,339</u>
Total funds		21,526	2,339

The notes on pages 16 to 23 form part of the financial statements.

All the above results arise from continuing activities.

There were no other recognised gains or losses other than those stated above.

These financial statements were approved and authorised for issue by the Board of Trustees on xx xxxx 2026 and signed on their behalf by:

CHARLOTTE CHURCH

FOUNDER AND CHAIR OF TRUSTEES

Notes to the financial statements

1. Accounting policies

Basis of preparation of the financial statements

The financial statements have been prepared in accordance with 'Charities SORP (FRS 102) - Accounting and Reporting by Charities: Statement of Recommended Practice applicable to charities preparing their accounts in accordance with the Financial Reporting Standard applicable in the UK and Republic of Ireland (FRS 102) second edition (effective 1 January 2019)', the Financial Reporting Standard applicable in the UK and Republic of Ireland (FRS 102), including Update Bulletin 1, and relevant charities law.

The effect of any event relating to the year ended 31 August 2025, which occurred before the date of approval of the financial statements by the Board of Trustees has been included in the financial statements to the extent required to show a true and fair view of the state of affairs at 31 August 2025 and the results for the year ended on that date.

The functional currency of the Charity is sterling and amounts in the financial statements are rounded to the nearest pound.

Using the exemption available to smaller charities the Board of Trustees has chosen not to include a Statement of Cash Flows within the financial statements.

Legal status

The Awen Project is a charitable incorporated organisation registered in England & Wales, and meets the definition of a public benefit entity. The registered office is 58 Glamorgan Street, Barry, South Glamorgan, CF62 6JN.

Going concern

The Trustees have assessed whether the use of the going concern basis is appropriate and have considered possible events or conditions that might cast significant doubt on the ability of the Charity to continue as a going concern. The Trustees have made this assessment for a period of at least one year from the date of approval of the financial statements.

The financial statements have been prepared on the going concern basis as the Board of Trustees is confident that future reserves and future income is more than sufficient to meet current commitments. There are no material uncertainties that impact this assessment, and the wider economic environment has had no material impact on this assessment. The Charity therefore has adopted the going concern basis in preparing its financial statements.

Fund Accounting

General funds are unrestricted funds which are available for use at the discretion of the Trustees in furtherance of the general objectives of the Charity and which have not been designated for other purposes.

Restricted funds are funds that are to be used in accordance with specific restrictions imposed by donors or that have been raised by the Charity for particular purposes. The cost of raising and administering such funds are charged against the specific fund. There are currently no restricted funds within the Charity.

Income

All income is included in the Statement of Financial Activities when the Charity has entitlement, there is probability of receipt and the amount is measurable.

For donations and gifts this is when they are received. Gift Aid is recognised on a receivable basis as part of the income to which it relates.

Income from charitable activities and grants is credited to the Statement of Financial Activities when received or receivable whichever is earlier, unless it relates to a specific future period or event, in which case it is deferred.

Expenditure and irrecoverable VAT

Expenditure is accounted for on an accruals basis and liabilities are recognised as expenditure when there is a legal obligation committing the Charity to the expenditure, it is probable that settlement will be made, and the obligation can be measured.

Non-recoverable VAT is included against the expenditure heading to which it relates.

Indirect costs, including governance costs, which cannot be directly attributed to activities, are allocated between activities proportionate to the direct costs incurred in those activities.

Taxation

As a registered charity income and gains are exempt from Corporation Tax to the extent that they are applied to the charitable objectives.

Tangible fixed assets and depreciation

Tangible fixed assets are stated at cost less accumulated depreciation and any impairment losses, with individual assets over £500 being capitalised. Depreciation is provided for at a rate to ensure the items are written down over their useful economic life as follows:

- Container - 3 years
- Computer equipment - 3 years
- Equipment - 3 years

Cash at bank and in hand

Cash at bank and in hand includes cash in hand, deposits with banks and funds that are readily convertible into cash at, or close to, their carrying values, but are not held for investment purposes.

Debtors

Trade and other debtors are recognised at the settlement amount after any trade discount is applied.

Creditors

Creditors are recognised where the Charity has a present obligation resulting from a past event that will probably result in the transfer of funds to a third party, and the amount due to settle the obligation can be measured or estimated reliably.

Financial instruments

Basic financial instruments are measured at amortised cost other than investments which are measured at fair value.

Critical estimates and judgements

In preparing financial statements it is necessary to make certain judgements, estimates and assumptions that affect the amounts recognised in the financial statements. The treatment of tangible fixed assets is sensitive to changes in useful economic lives and residual values of assets. These are reassessed annually.

In the view of the Trustees in applying the accounting policies adopted, no judgements were required that have a significant effect on the amounts recognised in the financial statements nor do any estimates or assumptions made carry a significant risk of material adjustment in the next financial year.

2. Comparative statement of financial activities

		Unrestricted Funds Year ended 31 Aug 2024 £	Restricted Funds Year ended 31 Aug 2024 £	Total Funds Year ended 31 Aug 2024 £
Income from:				
Donations and legacies	3	49,281	-	49,281
Charitable activities	4	4,089	-	4,089
Total income		53,370	-	53,370
Expenditure on:				
Raising funds	5	-	-	-
Charitable activities	5	60,428	-	60,428
Total expenditure		60,428	-	60,428
Net income/(expenditure)		(7,058)	-	(7,058)
Reconciliation of funds:				
Balance brought forward	9 & 10	9,397	-	9,397
Balance carried forward	9 & 10	2,339	-	2,339

3. Income from donations and legacies

	Unrestricted Funds Year ended 31 Aug 2025 £	Restricted Funds Year ended 31 Aug 2025 £	Total Funds Year ended 31 Aug 2025 £
Grants	78,740	-	78,740
Donations	2,587	-	2,587
Gift aid	8	-	8
Total income from donations and legacies	81,335	-	81,335

	Unrestricted Year ended 31 Aug 2024 £	Restricted Year ended 31 Aug 2024 £	Total Year ended 31 Aug 2024 £
Grants	32,450	-	32,450
Donations	15,840	-	15,840
Gift aid	991	-	991
Total income from donations and legacies	49,281	-	49,281

4. Income from other trading activities

	Unrestricted Funds	Restricted Funds	Total Funds
	Year ended	Year ended	Year ended
	31 Aug 2025	31 Aug 2025	31 Aug 2025
	£	£	£
Ticket sales for fundraising events	5,234	-	5,234
Total income from other trading activities	5,234	-	5,234

	Unrestricted Funds	Restricted Funds	Total Funds
	Year ended	Year ended	Year ended
	31 Aug 2024	31 Aug 2024	31 Aug 2024
	£	£	£
Ticket sales for fundraising events	4,089	-	4,089
Total income from other trading activities	4,089	-	4,089

5. Total expenditure

	Direct costs	Indirect costs	Total Funds
	Year ended	Year ended	Year ended
	31 Aug 2025	31 Aug 2025	31 Aug 2025
	£	£	£
Charitable activity	62,623	4,759	67,382
Total expenditure	62,623	4,759	67,382

	Direct costs	Indirect costs	Total Funds
	Year ended	Year ended	Year ended
	31 Aug 2024	31 Aug 2024	31 Aug 2024
	£	£	£
Charitable activity	55,756	4,672	60,428
Total expenditure	55,756	4,672	60,428

5. Total expenditure (continued)

Direct expenditure on charitable activities includes the following items:

	Total Funds Year ended 31 Aug 2025	Total Funds Year ended 31 Aug 2024
	£	£
Educationalists and other consultants	50,115	51,655
Other direct expenditure	12,508	4,101
Total direct expenditure on charitable activities	62,623	55,756

Indirect costs includes the following items:

	Total Funds Year ended 31 Aug 2025	Total Funds Year ended 31 Aug 2024
	£	£
Administration and other costs	1,606	1,391
Governance	3,153	3,281
Total indirect expenditure	4,759	4,672

Governance costs includes the following items:

	Total Funds Year ended 31 Aug 2025	Total Funds Year ended 31 Aug 2024
	£	£
Insurance expense	1,941	2,093
Independent examination	1,212	1,188
Total expenditure on governance	3,153	3,281

6. Tangible fixed assets

	Container	Computer equipment	Equipment	Total
	£	£	£	£
Cost				
As at 1 September 2024	8,380	1,499	5,455	15,334
As at 31 August 2025	8,380	1,499	5,455	15,334
Accumulated depreciation				
As at 1 September 2024	8,380	1,499	4,425	14,304
Charge in year	-	-	800	800
As at 31 August 2025	8,380	1,499	5,225	15,104
Net book value				
As at 1 September 2024	-	-	1,030	1,030
As at 31 August 2025	-	-	230	230

7. Debtors

	Total	Total
	31 Aug 2025	31 Aug 2024
	£	£
Prepayments	195	211
Accrued income	4,100	4,100
Other debtors	-	540
Total debtors	4,295	4,851

8. Creditors - amounts falling due within one year

	Total	Total
	31 Aug 2025	31 Aug 2024
	£	£
Accruals	4,515	6,188
Total creditors - amounts due within one year	4,515	6,188

9. Analysis of charity funds

	Balance brought forward Year ended 31 Aug 2025	Income in period Year ended 31 Aug 2025	Expenditure in period Year ended 31 Aug 2025	Balance carried forward Year ended 31 Aug 2025
	£	£	£	£
Unrestricted funds	2,339	86,569	(67,382)	21,526
Total charity funds	2,339	86,569	(67,382)	21,526

	Balance brought forward Year ended 31 Aug 2024	Income in period Year ended 31 Aug 2024	Expenditure in period Year ended 31 Aug 2024	Balance carried forward Year ended 31 Aug 2024
	£	£	£	£
Unrestricted funds	9,397	53,370	(60,428)	2,339
Total charity funds	9,397	53,370	(60,428)	2,339

10. Analysis of net assets

	Unrestricted Funds 31 Aug 2025	Restricted Funds 31 Aug 2025	Total Funds 31 Aug 2025
	£	£	£
Fixed assets	230	-	230
Current assets	25,811	-	25,811
Current liabilities	(4,515)	-	(4,515)
Total charity funds	21,526	-	21,526

	Unrestricted Funds 31 Aug 2024	Restricted Funds 31 Aug 2024	Total Funds 31 Aug 2024
	£	£	£
Fixed assets	1,030	-	1,030
Current assets	7,497	-	7,497
Current liabilities	(6,188)	-	(6,188)
Total charity funds	2,339	-	2,339

11. Trustee remuneration

During the year, no Trustee received any remuneration (2024: £Nil). No members of the Board of Trustees received reimbursement of expenses related to attendance at Trustee meetings (2024: £Nil).

12. Related party transactions

During the current year, Jonathan Powell, who was formerly a trustee and is spouse of Charlotte Church, Chair of the Board of Trustees was remunerated a total of £15,000 (2024: £15,000) for his role as a educational consultant after resigning as a trustee in May 2021. This is permitted under the constitution and Charlotte was not involved in the decision making process nor the discussions around remuneration. His remuneration was at the same rate as other consultants, all of whom are paid below market rates.

Total unrestricted donations from trustees amounted to £Nil (2024: £Nil) in the period.

13. Guarantees and secured charges

As at 31 August 2025 the Charity did not have any outstanding guarantees to third parties nor any debts secured against assets of the Charity (2024: £Nil).

THE AWEN PROJECT

England & Wales - Charity number 1186305

Accounts



THE **AWEN PROJECT**
Trustees Annual Report and
Financial Statements
Year ended 31 August 2024

“We continue to thrive - despite the challenges. Our families are better for having Awen in our lives - there is no doubt about that.”

(Awen parent)



Contents

Welcome	4
Trustees' annual report	5
Objectives	5
Activities	5
Achievements and performance	6
Organisational achievements	8
Impact Report 2024	7
Goals for 2024/25	7
Financial review	8
Structure, governance and management	8
Legal and administrative information	10
Statement of Board of Trustees' responsibilities	10
Independent examiner's report	12
Statement of financial activities	13
Balance sheet	14
Notes to the financial statements	15

Welcome

Welcome to our annual report for 2023/2024 - another year of rich learning and growing as a Tribe.

And another year of unbelievable pride, joy and wonder at our amazing children, amazing families and amazing educators who have achieved so much.

A lot of this year has still found us searching for a permanent home - and still a challenge - but one thing we have found through this adversity is that there are many people and supporters out there who want to help and get involved! This has been immeasurably encouraging and a real positive thread through something which we thought might bring us to a halt!

We have also had some brilliant events this year too - and some more funding from organisations that are starting to believe in our vision and values too - so we feel like the need for what we do is getting some of the attention that it deserves. This will make such a valuable difference to us operationally but also it will help to open out or networks and bring awareness to more people - which will help us in this long journey

As we always have been, we remain resolutely focused on our mission - which is simply to facilitate deeply meaningful, relevant and creative education to be offered democratically to the children and families who mainstream education does not work for. I've told you before - there are a lot!

I want to take a moment to thank everyone who has been a part of Awen this year, we have seen a lot of new faces in new families, but also new volunteers, and new facilitators and experts who have come to spend some time with us and the children. We have also made new partnerships and been on the road at festivals - and so we have spent a lot of time moving and shaking!

And I want to make a moment to thank everyone who has supported us this year - whether its coming to an event, donating their money or who continue to believe in what we do - it really has helped spur us on and continue to offer something that is so needed.

Love

Charlotte Church

FOUNDER AND CHAIR OF TRUSTEES

THE AWEN PROJECT

Trustees' annual report

The Board of Trustees, submit their annual report and the financial statements of The Awen Project for the year ended 31 August 2024.

The Board of Trustees confirms that the annual report and financial statements of the Charity comply with current statutory requirements, including the Charity Act 2011, as well as the requirements of the Charity's governing document and the provisions of the 'Charities SORP (FRS 102) - Accounting and Reporting by Charities: Statement of Recommended Practice applicable to charities preparing their accounts in accordance with the Financial Reporting Standard applicable in the UK and Republic of Ireland (FRS 102) second edition (effective 1 January 2019)', the Financial Reporting Standard applicable in the UK and Republic of Ireland (FRS 102).

Objectives

The Awen Project is a Charitable Incorporated Organisation (CIO), registered with the Charity Commission for England and Wales (Charity number: 1186305).

The objects of The Awen Project are to advance education for the public benefit by the establishment of, or assisting in the establishment of, schools that are governed by participatory democracy.

Our aim is to pioneer a new model for education that is democratic, free-to-attend, and human-centred. We empower young people as participants within a learning community by providing conditions supportive of learning (rather than teaching) and supporting families to facilitate their children's education.

The Trustees have referred to the Charity Commission's guidance on public benefit when reviewing the Charity's objectives and activities.

Activities

The Awen Project is pioneering a human-centred model for education where children are valued as people in their own right who are allowed to be themselves as active participants in a community. We support them to become healthy, informed, and responsible members of a global society. Today we are running a learning community based in Dinas Powys, South Wales, developing our expertise and approach in partnership with leading experts in education and human development. We plan to extend our impact on the education system through building our home community and welcoming more students and families, piloting our Awen Lite programme that welcomes mainstream educated children and is a potential revenue stream to support the project, and offering training to teachers and education practitioners.

Our vision is to co-create a network of learning communities throughout the world where every human is valued. An Awen education empowers at all levels by training and supporting parents and carers to be present in their children's education, bringing meaning and purpose to everyone in the community. Our team of creative facilitators are developing a relationship-based pedagogy that will form the basis of a new model for education – to replicate around the world, not for our profit but for the profit of future generations.

Over the last year major progress was made in the following areas:

- Received important funding from a variety of organisations and donors
- Curated and delivered several large scale fundraising events and activities
- Continued to look for land
- Made excellent partnerships and widened our network



Achievements and performance

Our learning:

This year, we immersed ourselves in a wide range of enriching activities and educational pursuits:

- Creating an RPG set during the Roman invasion of South Wales.
- Reading and discussing *The Dispossessed* by Ursula K. Le Guin and *Romeo and Juliet* by William Shakespeare.
- Song writing and map drawing.
- Plant and insect identification.
- Exploring poets and storytelling traditions.
- Studying art history, from the Baroque era to the 20th century.
- Engaging in sustainable Christmas crafting and scavenging for materials.
- Delving into *A Christmas Carol* by Charles Dickens.
- Establishing our own theatre production company, which included preparations for a public performance.
- Investigating the history of theatre worldwide and gender roles on stage.
- Mastering scripting, directing, acting, promoting, and organising theatrical events, alongside theatre design and more.

Some incredible events:

- Performed our play *The Letter Killers Club* over a three-night run.
- Took the production on the road to festivals, including a performance at Big Love Festival in Monmouthshire.
- Hosted Christmas busking sessions.
- Delivered a presentation at the annual HSE Conference in Bicester.
- Strengthened our partnerships and networks to further our mission.

Being in nature:

This year, we focused on developing temporary homes and continued our search for a permanent space. Along the way, we met some incredible people who inspired and supported us on this journey.

Our funders:

We are deeply grateful for the generous support of our funders, including:

- The National Lottery Community Fund
- WCVA
- CWVS
- Norton Rose
- The Vale of Glamorgan

Our community work:

We continue to be as involved in our community as we can and have welcomed new parents and guardians to our woodland home to find out more about Awen. This gives us a chance to meet new people and make new connections. We also visit the local community clubs and the local library to develop those relationships.

Awen families:

This year, we celebrated the arrival of four new families to our Tribe. It has been heart-warming to see everyone integrate so seamlessly and build such strong connections.

Strategic:

We welcomed a new educator, Valentine Gigandet, to our Tribe. Valentine has brought her creativity and a touch of French flair to our community. Welcome, Valentine!

And we also welcomed our new Volunteer Coordinator - Marie, who is also an Awen mama! We are excited to see how many new faces Marie will bring into the Tribe!

Impact Report 2024

Since joining Awen we have seen some amazing improvements in learning and well-being.

Our work has had a meaningful impact this year:

77% of families reported feeling **secure about their child's education**

84% of children reported feeling more **confident in using new skills for the future**

73% of children participated in **activities they are now eager to pursue further**

"This year, we have been so proud of the whole Tribe in how we have still managed to do so much despite not having a permanent home. It feels like we are all operating as one. And we all reap the benefits of that."

Goals for 2024/25

We still have to find a new home - and so that will be our absolute priority moving forward - but we are also focused on building partnerships - which we believe is the key to making wide reaching change in the sector.

Fundraising

We saw an excellent increase in support from grant donors which means our work is being recognised amongst different organisations.

Our target is still to raise £120k - £150k to cover core operating costs for the next two years. In this time, we will establish a set of income streams and develop a regular-giving base. We believe that philanthropic / major donors will offer the best chances of success and enable us to develop a network of partners who support our vision of a new, more human form of education.

We will continue with ideas for Wild Journeys - still focusing our partnerships on referral agencies like Youth Service and other learning clubs where there may be budgets to support the young people but also increasing our scope to a social enterprise and other community activities.

We will continue to improve fundraising infrastructure, in particular the Awen Project's website, mailing list, and social media. Using these tools effectively will enable us to make the most of engagement with like-minded families and supporters to grow our community and raise funds.

Educational practices

- We will continue to evolve in our reflective practices and working to establish best practice.
- We will make partnerships and allies in the progressive education network following from a positive conference visit this year - and continue to integrate ourselves in the growing sector.
- Continue to find ways to monitor and evaluate the learning journey.
- Continue to find ways to integrate progressive learning outcomes in mainstream society post Awen.

Looking outwards

- Bring together like-minded parents and educators and support them to establish an Awen (or Awen-inspired) setting in their local community. Through collaborating with others, we will necessarily take a critical look at our own ways of being and doing at the same time as nurturing a new educational setting.
- Talk about our work, our approach, and why this is an important (and under-valued) educational discussion. Collaborate with other Learning Communities to critique and support each other and develop practices across our wider community.

Financial review

During the current financial year, the charity achieved a deficit of £7,058 (2023: deficit of £9,873), decreasing total reserves at year end to £2,339 (2023: £9,397). Income for the year was £53,370 (2023: £63,850) and expenditure was £60,428 (2023: £73,723).

Of the reserves held at year end £2,339 (2023: reserves of £9,397) were unrestricted in nature.

Reserves policy

The trustees are currently in the process of putting together a formal reserves policy, however the current reserves of £2,339 (2023: £9,397) are deemed sufficient for the stage at which the Charity currently is and the current financial obligations of the organisation.

Structure, governance and management

Governing document

The Charity was registered on 12 November 2019 as a charitable incorporated organisation (CIO) governed by its constitution and whose only voting members are the Trustees.

Recruitment and appointment of Trustees

Trustees are elected onto the Board through nomination by the current Trustee Board. New Trustees are provided with an induction by the current members.

Under the governing document, the number of Trustees shall not be less than three with no maximum number. A quorum is formed when one half of the Trustees are present or three, whichever is the greater number. All decisions are made by the Trustees.

Risk management

The trustees review, on an annual basis, the major risks which the charity faces to ensure that it has sufficient resources in the event of adverse conditions. The trustees have examined the operational and business risks which the charity faces and confirm that they are satisfied that systems and controls are established over key financial systems to mitigate any significant risks.

The main risks facing the Charity are as follows:

Education Outcomes, Legislation, and Compliance

Working with young people is a privilege that comes with significant responsibility. In promoting an alternative approach to mainstream education, we must not assume that because we have positive intent that this will automatically yield

positive results for the young people in our care.

To ensure the well-being and development of our young people:

- We work with experts to inform our approach and ensure we are guided by research and the experience of more established democratic schools;
- Students participate in weekly coaching sessions to discuss their aims, progress, and any challenges they may currently be facing;
- Students complete regular self-assessments to understand how they are developing across a range of holistic measures (a broader set of measures than mainstream schools, that includes academic outcomes);
- We engage our parents / carers as partners in their children's education, which necessitates far better, deeper, and more frequent dialogue than would be normal for a mainstream setting;
- Most importantly, we listen to our young people; they are in charge of their own learning, with choice and real power over what they do and how their community is run.

There are many laws and regulations that govern the education and care of young people. We currently operate as a learning community of Elective Home Educated children and our provision is for fewer than 17 hours per week / 50% of a standard school week.

Financial sustainability

We are a young organisation and have not yet established reliable income sources with which to sustain ourselves over the longer term. To address this we are engaging with potential donors to provide further funding, with support from experienced fundraisers. Covid-19 has materially affected trusts and foundations resulting in a more challenging funding environment, especially for less well established charities like us.

There are opportunities for us to create reliable income streams by expanding our offering to include mainstream educated children and teachers, and we plan to launch pilot programmes over the next 12 months to test the market.

Health and safety

As our community is based primarily in the forest, there are many risks we need to be aware of and these change over time, for example trees may fall down after a storm and high winds make the site unsafe. In addition to basic safety checks and policies, our students perform regular site audits. We have appropriate insurance in place for an education setting, including public liability insurance.

Legal and administrative information

Charity name

The Awen Project

Charity registration no.

1186305

Company registration no.

CE019562

Registered office

The Spinney
Twyncyn
Dinas Powys
CF64 4AS

Trustees

Charlotte Church	Chair
Sean Bellamy	
John Farrell	
Stella Smith	

Independent examiner

Enaid Accountancy Ltd
Units 24 & 25
Goodsheds Container Village
Hood Road
Barry
CF62 5QU

Statement of Board of Trustees' responsibilities

The Trustees are responsible for preparing the Trustees' Annual Report and the financial statements in accordance with applicable law and regulations.

Charity law requires the Trustees to prepare financial statements for each financial year. Under that law they are required to prepare the financial statements in accordance with UK Accounting Standards and applicable law (UK Generally Accepted Accounting Practice), including FRS 102 The Financial Reporting Standard applicable in the UK and Republic of Ireland.

Under charity law the Trustees must not approve the financial statements unless they are satisfied that they give a 'true and fair' view of the state of affairs of the Charity and of the excess of income over expenditure for that period. In preparing these financial statements, the Trustees are required to:

- select suitable accounting policies and then apply them consistently;
- make judgements and estimates that are reasonable and prudent;
- state whether applicable UK Accounting Standards have been followed, subject to any material departures disclosed and explained in the financial statements; and,
- prepare the financial statements on the going concern basis unless it is inappropriate to presume that the Charity will continue its activities.

The Trustees are responsible for keeping adequate accounting records that are sufficient to show and explain the Charity's transactions and disclose with reasonable accuracy at any time the financial position of the Charity and enable them to ensure that the financial statements comply with the Charities Act 2011. They have general responsibility for taking such steps as are reasonably open to them to safeguard the assets of the Charity and to prevent and detect fraud and other irregularities.

The Trustees are responsible for the maintenance and integrity of the corporate and financial information included on the Charity's website.

Legislation in the UK governing the preparation and dissemination of financial statements may differ from legislation in other jurisdictions. In addition, the Trustees confirm that they are happy that the content of the Annual Review in pages 5-11 meet the requirements of the Trustees' Annual Report under charity law.

They also confirm that the financial statements have been prepared in accordance with the accounting policies set out in the notes to the accounts and comply with the Charity's governing document, the Charities Act 2011 and Accounting and Reporting by Charities: Statement of Recommended Practice applicable to charities preparing their accounts in accordance with FRS 102, The Financial Reporting Standard applicable in the UK and Republic of Ireland published on 16 July 2014.

This report was approved and authorised for issue by the Board of Trustees on xx June 2025 and signed on its behalf by:

CHARLOTTE CHURCH

FOUNDER AND CHAIR OF TRUSTEES

Independent examiner's report

I report to the trustees on my examination of the accounts of The Awen Project (charity number 1186305) for the year ended 31 August 2024 set out on pages 13 to 22.

Respective responsibilities of trustees and examiner

The CIO's trustees are responsible for the preparation of the accounts in accordance with the requirements of the Charities Act 2011 (the Charities Act). The CIO's trustees consider that an audit is not required for this year under section 144 of the Charities Act and that an independent examination is needed.

It is my responsibility to:

- examine the accounts under section 145 of the Charities Act;
- to follow the procedures laid down in the general Directions given by the Charity Commission under section 145(5)(b) of the Charities Act; and,
- to state whether particular matters have come to my attention.

This report, including my statement, has been prepared for and only for the CIO's trustees as a body. My work has been undertaken so that I might state to the CIO's trustees those matters I am required to state to them in an independent examiner's report and for no other purpose. To the fullest extent permitted by law, I do not accept or assume responsibility to anyone other than the CIO and the CIO's trustees as a body for my examination work, for this report, or for the statements I have made.

Basis of independent examiner's statement

My examination was carried out in accordance with general directions given by the Charity Commission. An examination includes a review of the accounting records kept by the CIO and a comparison of the accounts presented with those records. It also includes consideration of any unusual items or disclosures in the accounts, and seeking explanations from the trustees concerning any such matters.

The procedures undertaken do not provide all the evidence that would be required in an audit, and consequently no opinion is given as to whether the accounts present a 'true and fair' view and the report is limited to those matters set out in the statement below.

Independent examiner's statement

I have completed my examination. I confirm that no material matters have come to my attention in connection with the examination giving me cause to believe that in any material respect:

- accounting records were not kept in respect of the CIO as required by section 130 of the Act; or
- the accounts do not accord with those records; or
- the accounts do not comply with the applicable requirements concerning the form and content of accounts set out in the Charities (Accounts and Reports) Regulations 2008 other than any requirement that the accounts give a 'true and fair' view which is not a matter considered as part of an independent examination.

I have no concerns and have come across no other matters in connection with the examination to which attention should be drawn in this report in order to enable a proper understanding of the accounts to be reached.

ANDREW PHILIP NASH FCA

MEMBER OF THE INSTITUTE OF CHARTERED ACCOUNTANTS IN ENGLAND AND WALES – 2461833

DATED: XX JUNE 2025

Enaid Accountancy Ltd
Units 24 & 25
Goodsheds Container Village
Hood Road
Barry
CF62 5QU



Statement of financial activities

For the year ended 31 August 2024

		Unrestricted Funds	Restricted Funds	Total Funds	Total Funds
	Notes	Year ended 31 Aug 2024	Year ended 31 Aug 2024	Year ended 31 Aug 2024	Year ended 31 Aug 2023
		£	£	£	£
Income from:					
Donations and legacies	3	49,281	-	49,281	52,004
Other trading activities	4	4,089	-	4,089	11,846
Total income		53,370	-	53,370	63,850
Expenditure on:					
Raising funds	5	-	-	-	3,270
Charitable activities	5	60,428	-	60,428	70,453
Total expenditure		60,428	-	60,428	73,723
Net income/(expenditure)		(7,058)	-	(7,058)	(9,873)
Reconciliation of funds:					
Balance brought forward	9 & 10	9,397	-	9,397	19,270
Balance carried forward	9 & 10	2,339	-	2,339	9,397

The notes on pages 15 to 22 form part of the financial statements.

All the above results arise from continuing activities.

There were no other recognised gains or losses other than those stated above.

Balance sheet

As at 31 August 2024

	Notes	Total Funds	
		31 Aug 2024	31 Aug 2023
		£	£
Fixed assets			
Tangible fixed assets	6	1,030	3,656
Current assets			
Debtors	7	4,851	1,460
Cash at bank and in hand		2,646	10,469
Total current assets		7,497	11,929
Creditors -			
amounts falling due within one year	8	(6,188)	(6,188)
Net current assets		1,309	5,741
Net assets		2,339	9,397
Funds of the charity:			
Unrestricted funds			
General funds	9 & 10	2,339	9,397
Total funds		2,339	9,397

The notes on pages 15 to 22 form part of the financial statements.

All the above results arise from continuing activities.

There were no other recognised gains or losses other than those stated above.

These financial statements were approved and authorised for issue by the Board of Trustees on xx June 2025 and signed on their behalf by:

CHARLOTTE CHURCH

FOUNDER AND CHAIR OF TRUSTEES

Notes to the financial statements

1. Accounting policies

Basis of preparation of the financial statements

The financial statements have been prepared in accordance with 'Charities SORP (FRS 102) - Accounting and Reporting by Charities: Statement of Recommended Practice applicable to charities preparing their accounts in accordance with the Financial Reporting Standard applicable in the UK and Republic of Ireland (FRS 102) second edition (effective 1 January 2019)', the Financial Reporting Standard applicable in the UK and Republic of Ireland (FRS 102), including Update Bulletin 1, and relevant charities law.

The effect of any event relating to the year ended 31 August 2024, which occurred before the date of approval of the financial statements by the Board of Trustees has been included in the financial statements to the extent required to show a true and fair view of the state of affairs at 31 August 2024 and the results for the year ended on that date.

The functional currency of the Charity is sterling and amounts in the financial statements are rounded to the nearest pound.

Using the exemption available to smaller charities the Board of Trustees has chosen not to include a Statement of Cash Flows within the financial statements.

Legal status

The Awen Project is a charitable incorporated organisation registered in England & Wales, and meets the definition of a public benefit entity. The registered office is The Spinney, Twyncyn, Dinas Powys, CF64 4AS.

Going concern

The Trustees have assessed whether the use of the going concern basis is appropriate and have considered possible events or conditions that might cast significant doubt on the ability of the Charity to continue as a going concern. The Trustees have made this assessment for a period of at least one year from the date of approval of the financial statements.

The financial statements have been prepared on the going concern basis as the Board of Trustees is confident that future reserves and future income is more than sufficient to meet current commitments. There are no material uncertainties that impact this assessment, and the wider economic environment has had no material impact on this assessment. The Charity therefore has adopted the going concern basis in preparing its financial statements.

Fund Accounting

General funds are unrestricted funds which are available for use at the discretion of the Trustees in furtherance of the general objectives of the Charity and which have not been designated for other purposes.

Restricted funds are funds that are to be used in accordance with specific restrictions imposed by donors or that have been raised by the Charity for particular purposes. The cost of raising and administering such funds are charged against the specific fund. There are currently no restricted funds within the Charity.

Income

All income is included in the Statement of Financial Activities when the Charity has entitlement, there is probability of receipt and the amount is measurable.

For donations and gifts this is when they are received. Gift Aid is recognised on a receivable basis as part of the income to which it relates.

Income from charitable activities and grants is credited to the Statement of Financial Activities when received or receivable whichever is earlier, unless it relates to a specific future period or event, in which case it is deferred.

Expenditure and irrecoverable VAT

Expenditure is accounted for on an accruals basis and liabilities are recognised as expenditure when there is a legal obligation committing the Charity to the expenditure, it is probable that settlement will be made, and the obligation can be measured.

Non-recoverable VAT is included against the expenditure heading to which it relates.

Indirect costs, including governance costs, which cannot be directly attributed to activities, are allocated between activities proportionate to the direct costs incurred in those activities.

Taxation

As a registered charity income and gains are exempt from Corporation Tax to the extent that they are applied to the charitable objectives.

Tangible fixed assets and depreciation

Tangible fixed assets are stated at cost less accumulated depreciation and any impairment losses, with individual assets over £500 being capitalised. Depreciation is provided for at a rate to ensure the items are written down over their useful economic life as follows:

- Container - 3 years
- Computer equipment - 3 years
- Equipment - 3 years

Cash at bank and in hand

Cash at bank and in hand includes cash in hand, deposits with banks and funds that are readily convertible into cash at, or close to, their carrying values, but are not held for investment purposes.

Debtors

Trade and other debtors are recognised at the settlement amount after any trade discount is applied.

Creditors

Creditors are recognised where the Charity has a present obligation resulting from a past event that will probably result in the transfer of funds to a third party, and the amount due to settle the obligation can be measured or estimated reliably.

Financial instruments

Basic financial instruments are measured at amortised cost other than investments which are measured at fair value.

Critical estimates and judgements

In preparing financial statements it is necessary to make certain judgements, estimates and assumptions that affect the amounts recognised in the financial statements. The treatment of tangible fixed assets is sensitive to changes in useful economic lives and residual values of assets. These are reassessed annually.

In the view of the Trustees in applying the accounting policies adopted, no judgements were required that have a significant effect on the amounts recognised in the financial statements nor do any estimates or assumptions made carry a significant risk of material adjustment in the next financial year.

2. Comparative statement of financial activities

		Unrestricted Funds Year ended 31 Aug 2023	Restricted Funds Year ended 31 Aug 2023	Total Funds Year ended 31 Aug 2023
	Notes	£	£	£
Income from:				
Donations and legacies	3	52,004	-	52,004
Charitable activities	4	11,846	-	11,846
Total income		63,850	-	63,850
Expenditure on:				
Raising funds	5	3,270	-	3,270
Charitable activities	5	70,453	-	70,453
Total expenditure		73,723	-	73,723
Net income/(expenditure)		(9,873)	-	(9,873)
Reconciliation of funds:				
Balance brought forward	9 & 10	19,270	-	19,270
Balance carried forward	9 & 10	9,397	-	9,397

3. Income from donations and legacies

	Unrestricted Funds Year ended 31 Aug 2024	Restricted Funds Year ended 31 Aug 2024	Total Funds Year ended 31 Aug 2024
	£	£	£
Grants	32,450	-	32,450
Donations	15,840	-	15,840
Gift aid	991	-	991
Total income from donations and legacies	49,281	-	49,281
	Unrestricted Funds Year ended 31 Aug 2023	Restricted Funds Year ended 31 Aug 2023	Total Funds Year ended 31 Aug 2023
	£	£	£
Donations	52,004	-	52,004
Total income from donations and legacies	52,004	-	52,004

4. Income from other trading activities

	Unrestricted Funds	Restricted Funds	Total Funds
	Year ended	Year ended	Year ended
	31 Aug 2024	31 Aug 2024	31 Aug 2024
	£	£	£
Ticket sales for fundraising events	4,089	-	4,089
Total income from other trading activities	4,089	-	4,089

	Unrestricted Funds	Restricted Funds	Total Funds
	Year ended	Year ended	Year ended
	31 Aug 2023	31 Aug 2023	31 Aug 2023
	£	£	£
Ticket sales for fundraising events	11,846	-	11,846
Total income from other trading activities	11,846	-	11,846

5. Total expenditure

	Direct costs	Indirect costs	Total Funds
	Year ended	Year ended	Year ended
	31 Aug 2024	31 Aug 2024	31 Aug 2024
	£	£	£
Raising funds	-	-	-
Charitable activity	55,756	4,672	60,428
Total expenditure	55,756	4,672	60,428

	Direct costs	Indirect costs	Total Funds
	Year ended	Year ended	Year ended
	31 Aug 2023	31 Aug 2023	31 Aug 2023
	£	£	£
Raising funds	2,997	273	3,270
Charitable activity	64,575	5,878	70,453
Total expenditure	67,572	6,151	73,723

5. Total expenditure (continued)

Direct expenditure on raising funds includes the following items:

	Total Funds Year ended 31 Aug 2024	Total Funds Year ended 31 Aug 2023
	£	£
Fundraising consultancy support	-	2,997
Total direct expenditure on raising funds	-	2,997

Direct expenditure on charitable activities includes the following items:

	Total Funds Year ended 31 Aug 2024	Total Funds Year ended 31 Aug 2023
	£	£
Educationalists and other consultants	51,655	55,117
Staff Training	-	361
Other direct expenditure	4,101	9,097
Total direct expenditure on charitable activities	55,756	64,575

Indirect costs includes the following items:

	Total Funds Year ended 31 Aug 2024	Total Funds Year ended 31 Aug 2023
	£	£
Administration and other costs	1,391	2,775
Governance	3,281	3,376
Total indirect expenditure	4,672	6,151

Governance costs includes the following items:

	Total Funds Year ended 31 Aug 2024	Total Funds Year ended 31 Aug 2023
	£	£
Insurance expense	2,093	2,188
Independent examination	1,188	1,188
Total expenditure on governance	3,281	3,376

6. Tangible fixed assets

	Container £	Computer equipment £	Equipment £	Total £
Cost				
As at 1 September 2023	8,380	1,499	5,455	15,334
As at 31 August 2024	8,380	1,499	5,455	15,334
Accumulated depreciation				
As at 1 September 2023	7,844	1,227	2,607	11,678
Charge in year	536	272	1,818	2,626
As at 31 August 2024	8,380	1,499	4,425	14,304
Net book value				
As at 1 September 2023	536	272	2,848	3,656
As at 31 August 2024	-	-	1,030	1,030

7. Debtors

	Total 31 Aug 2024 £	Total 31 Aug 2023 £
Prepayments	211	225
Accrued income	4,100	-
Other debtors	540	1,235
Total debtors	4,851	1,460

8. Creditors - amounts falling due within one year

	Total 31 Aug 2024 £	Total 31 Aug 2023 £
Accruals	6,188	6,188
Total creditors - amounts due within one year	6,188	6,188

9. Analysis of charity funds

	Balance brought forward Year ended 31 Aug 2024 £	Income in period Year ended 31 Aug 2024 £	Expenditure in period Year ended 31 Aug 2024 £	Balance carried forward Year ended 31 Aug 2024 £
Unrestricted funds	9,397	53,370	(60,428)	2,339
Total charity funds	9,397	53,370	(60,428)	2,339

	Balance brought forward Year ended 31 Aug 2023 £	Income in period Year ended 31 Aug 2023 £	Expenditure in period Year ended 31 Aug 2023 £	Balance carried forward Year ended 31 Aug 2023 £
Unrestricted funds	19,270	63,850	(73,723)	9,397
Total charity funds	19,270	63,850	(73,723)	9,397

10. Analysis of net assets

	Unrestricted Funds 31 Aug 2024 £	Restricted Funds 31 Aug 2024 £	Total Funds 31 Aug 2024 £
Fixed assets	1,030	-	1,030
Current assets	7,497	-	7,497
Current liabilities	(6,188)	-	(6,188)
Total charity funds	2,339	-	2,339

	Unrestricted Funds 31 Aug 2023 £	Restricted Funds 31 Aug 2023 £	Total Funds 31 Aug 2023 £
Fixed assets	3,656	-	3,656
Current assets	11,929	-	11,929
Current liabilities	(6,188)	-	(6,188)
Total charity funds	9,397	-	9,397

11. Trustee remuneration

During the year, no Trustee received any remuneration (2023: £Nil). No members of the Board of Trustees received reimbursement of expenses related to attendance at Trustee meetings (2023: £Nil).

12. Related party transactions

During the current year, Jonathan Powell, who was formerly a trustee and is spouse of Charlotte Church, Chair of the Board of Trustees was remunerated a total of £15,000 (2023: £17,500) for his role as a educational consultant after resigning as a trustee in May 2021. This is permitted under the constitution and Charlotte was not involved in the decision making process nor the discussions around remuneration. His remuneration was at the same rate as other consultants, all of whom are paid below market rates.

Total unrestricted donations from trustees amounted to £Nil (2023: £Nil) in the period.

13. Guarantees and secured charges

As at 31 August 2024 the Charity did not have any outstanding guarantees to third parties nor any debts secured against assets of the Charity (2023: £Nil).

THE AWEN PROJECT

England & Wales - Charity number 1186305

Accounts



THE **AWEN PROJECT**
Trustees Annual Report and
Financial Statements
Year ended 31 August 2023

“Awen has changed my son’s life and I am forever grateful”

(Awen parent)



Contents

Welcome	4
Trustees' annual report	5
Objectives	5
Activities	5
Achievements and performance	6
Impact Report 2023	8
Goals for 2023/24	9
Financial review	10
Structure, governance and management	10
Legal and administrative information	11
Statement of Board of Trustees' responsibilities	11
Independent examiner's report	14
Statement of financial activities	15
Balance sheet	16
Notes to the financial statements	17

Welcome

Welcome to our annual report for 2022/2023 - and what a rollercoaster of a year it has been!

We have had such brilliant highs - with wonderful achievements of our Tribe giving us such energy and vision for the next year. We have also been through some devastating challenges, like losing the land which we have called home for the last few years. More of that later! However, despite these obstacles - we remain resolutely focussed on our mission - which is simply to facilitate deeply meaningful, relevant and creative education to be offered democratically to the children and families who mainstream education does not work for (a lot of people, as it goes!).

When I sit down and write this its easy to think about what is to come, what more do we need to do and how can we get there - but It's also such an opportunity to look at how far we have come from just an idea and a passion.

This year our Tribe has welcomed new families, we have welcomed new supporters and we have welcomed new ideas - all of which has invaluable contributed to our evolution and our village. I feel very grateful that awareness of this movement, of a gently radical shakeup of the education system, is increasing exponentially and we are all enthused by the continued support of our communities.

I mentioned earlier that our Tribe have had some wonderful achievements this year; They have project led their own huge event, been abroad, produced their own magazine, produced incredible artwork, written poetry and so so much more. I am extremely proud to show you.

But alas - our partnership with The Woodland Trust came to a very sorry end with them renegeing on our long standing partnership agreement and unfortunately leaving us homeless - with immeasurable practical and emotional damage. It meant that we could not secure some expected funding and it meant that our already stretched resources have been largely tasked going into our new financial year with finding somewhere we can now call home (not achieved at the time of writing!). Way more importantly it has knocked the confidence our Tribe have in the supposed democratic and collaborative societies that we are so passionately promoting. A David and Goliath story indeed!

We will not be defeated though. What we have felt through this blip is literally overwhelming support and understanding - and have had so many offers from far and wide - from kind, compassionate and like-minded people which i gives us so much hope for the future.

Charlotte Church

FOUNDER AND CHAIR OF TRUSTEES

THE AWEN PROJECT

Trustees' annual report

The Board of Trustees, submit their annual report and the financial statements of The Awen Project for the year ended 31 August 2023.

The Board of Trustees confirms that the annual report and financial statements of the Charity comply with current statutory requirements, including the Charity Act 2011, as well as the requirements of the Charity's governing document and the provisions of the 'Charities SORP (FRS 102) - Accounting and Reporting by Charities: Statement of Recommended Practice applicable to charities preparing their accounts in accordance with the Financial Reporting Standard applicable in the UK and Republic of Ireland (FRS 102) second edition (effective 1 January 2019)', the Financial Reporting Standard applicable in the UK and Republic of Ireland (FRS 102).

Objectives

The Awen Project is a Charitable Incorporated Organisation (CIO), registered with the Charity Commission for England and Wales (Charity number: 1186305).

The objects of The Awen Project are to advance education for the public benefit by the establishment of, or assisting in the establishment of, schools that are governed by participatory democracy.

Our aim is to pioneer a new model for education that is democratic, free-to-attend, and human-centred. We empower young people as participants within a learning community by providing conditions supportive of learning (rather than teaching) and supporting families to facilitate their children's education.

The Trustees have referred to the Charity Commission's guidance on public benefit when reviewing the Charity's objectives and activities.

Activities

The Awen Project is pioneering a human-centred model for education where children are valued as people in their own right who are allowed to be themselves as active participants in a community. We support them to become healthy, informed, and responsible members of a global society. Today we are running a learning community based in Dinas Powys, South Wales, developing our expertise and approach in partnership with leading experts in education and human development. We plan to extend our impact on the education system through building our home community and welcoming more students and families, piloting our Awen Lite programme that welcomes mainstream educated children and is a potential revenue stream to support the project, and offering training to teachers and education practitioners.

Our vision is to co-create a network of learning communities throughout the world where every human is valued. An Awen education empowers at all levels by training and supporting parents and carers to be present in their children's education, bringing meaning and purpose to everyone in the community. Our team of creative facilitators are developing a relationship-based pedagogy that will form the basis of a new model for education – to replicate around the world, not for our profit but for the profit of future generations.



Over the last year major progress was made in the following areas:

- Linked up with a democratic school in Paris on our first overseas trip.
- Curated and delivered a large scale fundraising event
- Continued to develop our site
- Started to deliver Wild Journeys - our sustainability plan.

Achievements and performance

Some incredible events:

This year we have dialled up our project management experience and developed all of the skills and knowledge that comes with that.

We started with a bang in December where we took over top fine dining restaurant 'Alium'. We ran the event as a Christmas fundraiser and we learned how to set up the event, promote it and run it on the night. The best part is we were able to take over the kitchen and serve fancy dishes to all of our supporters! We finished the night off with a performance that we put together



Wild Banquet



By the biggest event we have done is our Wild Banquet event in July. We wanted to bring people onto our land to show them how we run and how we can be in the forest in a really cool way. That has low impact on the woods - but high impact for our community.

The banquet was a huge project - learning so many different skills - planning, logistics, infrastructure, cooking, customer service, hospitality, entertainment, storytelling, and themes, setting down and clearing up. We did this over two nights and we were able to raise over £10,000 which felt amazing!





Our revolution!

This year we have been learning about the French revolutions - we have been read French Literature and learned French Songs and games as well as designing our own Top Trump revolution cards! We've also managed to learn loads of French!

We even managed to visit France where visited historical sites of the French Revolution as well as more well known places like The Eiffel Tower.

While we were there we linked up with a Democratic Learning Community in France and we were able to share and learn from each other. Ooh La La!

Being in nature

As usual we have spent almost all of our time outdoors. Being in the forest also allows us to learn skills that help us focus, connect and learn with nature and create things that are useful. We have continued to make our site INCREDIBLE and we were very sad to lose our home but we learned so much about how to work with nature and be part of the forest.

We also have spent time orienteering and hiking, identifying plants, foraging, building camps, making pathways, creating an allotment, cooking in the forest and learning campfire songs.

This not only helped up learn amazing skills - but also builds our community.

And we learned how to make natural dyes and materials from the forest itself - and we were able to make our own sustainable bags which we later used for our Wild Banquet event.



All things the arts!

We learn through being really creative - and as well as the performances we have done at our events, we have also immersed ourselves in lots of other artistic endeavours!

We have performed with our Awen band in several places and we are all becoming more confident with our instruments and singing.

We have written poetry, studied lots of incredible literature, like Romeo and Juliet, Medieval romances, we have also studied mythical stories and legends .

We have story boarded our own films and written scripts whilst learning about toxic elements of the media and how to be smart when using media as well as learned how to do Stop Frame animation. We have made candles and wood carvings and we designed, wrote and made our very own lifestyle magazine Bandersnatch!

And so much more!

We have really done so much this year in what we have learned but we have also tended to our community. We have co-created ceremonies to strengthen our Tribe. We have said goodbye to people who have moved and we have said Hello to new members who are now part of our village.

Our community work

We continue to be as involved in our community as we can and have welcomed new parents and guardians to our woodland home to find out more about Awen. This gives us a chance to meet new people and make new connections. We also visit the local community clubs and the local library to develop those relationships.

We were asked to do a Tedex talk too - but unfortunately it was rescheduled - but watch this space!

Organisational achievements

Awen Families

Our families have also been moving and shaking and this year we divided ourselves up into different groups. We have an events and fundraising team, a social media team, a grants team, and a site team - all who feedback to the regular guardian gathering to help us grow. As ever they are supporting and engaged and a huge part of the village.

The sustainability Model

The plans for this year were to develop our sustainability model and we have been piloting our programme Wild Journeys.

We have partners with ITEC training solutions who work with young people aged 16+ and are not in college or work. They come down to our land and we run creative democratic sessions to help them learn new skills, learn about democracy and learn about themselves in nature.

We are delighted to have been awarded Big Lottery Funding to support this part of our programme.

Strategic

We are moving forward with plans to recruit some more team members - namely a volunteer coordinator and a new educator. We have made an application to the Volunteering Wales fund and will hear early next year if we have been successful.

We have also reached out to socially responsible corporate organisations to see if we might be able to deliver workshops on democracy in action.



We would also like to say goodbye to our amazing educator and Tribe Member, Phoebe Patience - who has been an amazing addition to the Awen team. We are sad to see her go but happy that she is moving onwards and upwards to pastures new. We will be looking for a new educator going into 2023/2024



Impact Report 2023

Students

Since joining Awen we have seen some amazing improvements in learning and wellbeing:

31% increase in ability to **finish work**

35% increase in **concentration and attention**

We also saw a significant improvement in engagement in learning

84% reported feeling **confident co-creating projects**

82% reported feeling like they've **learned new skills that they will use in future**

And we are happy to see excellent results in the way our young people think about others around them.

72% reported that they are kind to younger children

The Awen Project has made immeasurable positive changes to my son. He's gone from being bored and losing his confidence to inspired, independent and happy. Navigating his teen years and his future is now a positive pathway full of enthusiasm.

Goals for 2023/24

Having lost our home, sadly the unexpected focus for us going into our new year is to find somewhere new to base ourselves.

We have already been inundated with lots of offers of land and help, so the first part of the year will be reevaluating what we need in a home, and look for potential partnerships that will be mutually beneficial

We will also be looking to continue to build on Wild Journeys and how we can maximise our income generating while furthering our learning.

Our focus here will be on building social enterprise within our village and we will be planning to look at creative and interesting revenue.

We are looking to replace our parent trustee role who can represent our young people at board level.

Fundraising

We saw a large increase in our fundraising this year which is great.

This was largely down to a couple of major donors, our incredible fundraising events and the grant funding from the Awards for All programme. Unfortunately we were unable to secure a further £20k from two other funders when we lost our land. Although its disappointing, it also means that we have something to build on for next year.

Our target is still to raise £120k – £150k to cover core operating costs for the next two years. In this time, we will establish a set of income streams and develop a regular-giving base. We believe that philanthropic / major donors will offer the best chances of success and enable us to develop a network of partners who support our vision of a new, more human form of education.

We will continue with ideas for Wild Journeys - still focusing our partnerships on referral agencies like Youth Service and other learning clubs where there may be budgets to support the young people but also increasing our scope to a social enterprise and other community activities.

We will continue to improve fundraising infrastructure, in particular the Awen Project's website, mailing list, and social media. Using these tools effectively will enable us to make the most of engagement with like-minded families and supporters to grow our community and raise funds.

Educational practices

- We will continue to evolve in our reflective practices and working to establish best practice
- We will make partnerships and allies in the progressive education network following from a positive conference visit this year - and continue to integrate ourselves in the growing sector.
- Continue to find ways to monitor and evaluate the learning journey
- Continue to find ways to integrate progressive learning outcomes in mainstream society post Awen.

Looking outwards

- Bring together like-minded parents and educators and support them to establish an Awen (or Awen-inspired) setting in their local community. Through collaborating with others, we will necessarily take a critical look at our own ways of being and doing at the same time as nurturing a new educational setting.
- Talk about our work, our approach, and why this is an important (and under-valued) educational discussion. Collaborate with other Learning Communities to critique and support each other and develop practice across our wider community.

Financial review

During the current financial year, the charity achieved a deficit of £38,383 (2022: deficit of £38,383), decreasing total reserves at year end to £8,270 (2022: £19,720). Income for the year was £62,615 (2022: £9,400) and expenditure was £73,615 (2022: £47,783).

Of the reserves held at year end £8,270 (2022: £19,720) were unrestricted in nature.

Reserves policy

The trustees are currently in the process of putting together a formal reserves policy, however the current reserves of £8,270 (2022: £19,720) are deemed sufficient for the stage at which the Charity currently is and the current financial obligations of the organisation.

Structure, governance and management

Governing document

The Charity was registered on 12 November 2019 as a charitable incorporated organisation (CIO) governed by its constitution and whose only voting members are the Trustees.

Recruitment and appointment of Trustees

Trustees are elected onto the Board through nomination by the current Trustee Board. New Trustees are provided with an induction by the current members.

Under the governing document, the number of Trustees shall not be less than three with no maximum number. A quorum is formed when one half of the Trustees are present or three, whichever is the greater number. All decisions are made by the Trustees.

Risk management

The trustees review, on an annual basis, the major risks which the charity faces to ensure that it has sufficient resources in the event of adverse conditions. The trustees have examined the operational and business risks which the charity faces and confirm that they are satisfied that systems and controls are established over key financial systems to mitigate any significant risks.

The main risks facing the Charity are as follows:

Education Outcomes, Legislation, and Compliance

Working with young people is a privilege that comes with significant responsibility. In promoting an alternative approach to mainstream education, we must not assume that because we have positive intent that this will automatically yield positive results for the young people in our care.

To ensure the well-being and development of our young people:

- We work with experts to inform our approach and ensure we are guided by research and the experience of more established democratic schools;
- Students participate in weekly coaching sessions to discuss their aims, progress, and any challenges they may currently be facing;
- Students complete regular self-assessments to understand how they are developing across a range of holistic measures (a broader set of measures than mainstream schools, that includes academic outcomes);

- We engage our parents / carers as partners in their children's education, which necessitates far better, deeper, and more frequent dialogue than would be normal for a mainstream setting;
- Most importantly, we listen to our young people: they are in charge of their own learning, with choice and real power over what they do and how their community is run.

There are many laws and regulations that govern the education and care of young people. We currently operate as a learning community of Elective Home Educated children and our provision is for fewer than 17 hours per week / 50% of a standard school week.

Financial sustainability

We are a young organisation and have not yet established reliable income sources with which to sustain ourselves over the longer term. To address this we are engaging with potential donors to provide further funding, with support from experienced fundraisers. Covid-19 has materially affected trusts and foundations resulting in a more challenging funding environment, especially for less well established charities like us.

There are opportunities for us to create reliable income streams by expanding our offering to include mainstream educated children and teachers, and we plan to launch pilot programmes over the next 12 months to test the market.

Health and safety

As our community is based primarily in the forest, there are many risks we need to be aware of and these change over time, for example trees may fall down after a storm and high winds make the site unsafe. In addition to basic safety checks and policies, our students perform regular site audits. We have appropriate insurance in place for an education setting, including public liability insurance.

Legal and administrative information

Charity name

The Awen Project

Charity registration no.

1186305

Company registration no.

CE019562

Registered office

The Spinney
Twyncyn
Dinas Powys
CF64 4AS

Trustees

Charlotte Church	Chair
Sean Bellamy	
Nicola Blenman	
John Farrell	
Stella Smith	

Independent examiner

Andy Nash Accounting & Consultancy Ltd
Units 24 & 25
Goodsheds Container Village
Hood Road
Barry
CF62 5QU

Statement of Board of Trustees' responsibilities

The Trustees are responsible for preparing the Trustees' Annual Report and the financial statements in accordance with applicable law and regulations.

Charity law requires the Trustees to prepare financial statements for each financial year. Under that law they are required to prepare the financial statements in accordance with UK Accounting Standards and applicable law (UK Generally Accepted Accounting Practice), including FRS 102 The Financial Reporting Standard applicable in the UK and Republic of Ireland.

Under charity law the Trustees must not approve the financial statements unless they are satisfied that they give a 'true and fair' view of the state of affairs of the Charity and of the excess of income over expenditure for that period. In preparing these financial statements, the Trustees are required to:

- select suitable accounting policies and then apply them consistently;
- make judgements and estimates that are reasonable and prudent;
- state whether applicable UK Accounting Standards have been followed, subject to any material departures disclosed and explained in the financial statements; and,
- prepare the financial statements on the going concern basis unless it is inappropriate to presume that the Charity will continue its activities.

The Trustees are responsible for keeping adequate accounting records that are sufficient to show and explain the Charity's transactions and disclose with reasonable accuracy at any time the financial position of the Charity and enable them to ensure that the financial statements comply with the Charities Act 2011. They have general responsibility for taking such steps as are reasonably open to them to safeguard the assets of the Charity and to prevent and detect fraud and other irregularities.

The Trustees are responsible for the maintenance and integrity of the corporate and financial information included on the Charity's website.

Legislation in the UK governing the preparation and dissemination of financial statements may differ from legislation in other jurisdictions. In addition, the Trustees confirm that they are happy that the content of the Annual Review in pages 5-12 meet the requirements of the Trustees' Annual Report under charity law.

They also confirm that the financial statements have been prepared in accordance with the accounting policies set out in the notes to the accounts and comply with the Charity's governing document, the Charities Act 2011 and Accounting and Reporting by Charities: Statement of Recommended Practice applicable to charities preparing their accounts in accordance with FRS 102, The Financial Reporting Standard applicable in the UK and Republic of Ireland published on 16 July 2014.

This report was approved and authorised for issue by the Board of Trustees on xxxxxxxx 2024 and signed on its behalf by:

CHARLOTTE CHURCH

FOUNDER AND CHAIR OF TRUSTEES

Tribe member spotlight: Jonny Powell

Jonny is a composer, instrumentalist, performer, writer, storyteller and educator, working professionally in these fields for the last 20 years.

At the core of his practice as an artist and learning facilitator is bringing together meaningful and imaginative community, co-creation in all things, following consent-based democracy, and advocating for a group expectation of high achievements

In Jonny's words:

I hold space for young people to learn and grow. In 2019 I helped to set up the Awen Project, a charity that supports families to establish free-to-attend, nature-based learning communities along democratic principles, with the aim of offering a genuine alternative to mainstream education. Since then I have been working with groups of 8-16 year olds to co-create the first of our learning communities, the Awen Tribe, in the forests of Dinas Powys.

As Head of Learning / Tribal Elder I have been a rudder and ropes through doldrums and hurricanes, a trusty carthorse for the physical and the philosophical, the first line of defence in hostile territory, a witch and a priest and a nurse to the young and their families. Online, offline, between pines, beneath bombardment and through winter's frozen fathoms I have carried the flame and kept it kindled.

My work is incredibly varied, from developing and facilitating co-created projects as curricula (my superpower!), to 1-to-1 coaching and counselling, as well as supporting the tribe towards self-directed individual and community action. I foster loving and well-boundaried relationships with my students by being emotionally available and consistent, whilst working hard to understand who each one of them is.

There are so many things that Awen does: consent-based democracy, social entrepreneurial projects, human-scale education, learning outdoors (exclusively and all year round), socially engaged art projects, peer-assessment, public exhibitions, even normal lessons on occasion...

... but the stuff we do that is most vital, is the stuff we are most missing in broader society: building and sustaining meaningful community, engaging with nature, and exploring the soul and stoking its fires. I create for young people wild journeys that connect them to the miracle of their existence, as individuals and as constituent parts of a conscious universe.

My students vary hugely (as do their families) - socio-economically, ethnically, culturally. We draw no distinction between those with "special" needs and those with "typical" needs - a community built on healthy relationships understands that everyone has differing needs, that have to be respected and supported for an individual to function well. I work with all hues of neurodiversity, those with exceptional talents and those whose special skills have yet to emerge. More and more I am receiving children with debilitating anxiety but with no other neurological condition, who are effectively being excluded from schools (ironically the trauma-factories that gave them anxiety in the first place). It does not take them long at Awen before they feel enabled to be happy, healthy learners with emotionally supportive friendships, and on course for a bright future.

By the time they leave Awen, young people have developed extraordinary communication skills, cultivated a wild (not feral) imagination, developed a work ethic sharpened by necessity, and learned how to learn. They have faith in themselves, and resilience, so they can go on to navigate spaces that are less respectful, without compromising who they are. We are raising changemakers. We show them how they belong in the world.



Jonny Powell

JONNY POWELL

Co-Founder, Lead Educator and Tribe Elder

Independent examiner's report

I report to the trustees on my examination of the accounts of The Awen Project (charity number 1186305) for the year ended 31 August 2023 set out on pages 15 to 24.

Respective responsibilities of trustees and examiner

The CIO's trustees are responsible for the preparation of the accounts in accordance with the requirements of the Charities Act 2011 (the Charities Act). The CIO's trustees consider that an audit is not required for this year under section 144 of the Charities Act and that an independent examination is needed.

It is my responsibility to:

- examine the accounts under section 145 of the Charities Act;
- to follow the procedures laid down in the general Directions given by the Charity Commission under section 145(5)(b) of the Charities Act; and,
- to state whether particular matters have come to my attention.

This report, including my statement, has been prepared for and only for the CIO's trustees as a body. My work has been undertaken so that I might state to the CIO's trustees those matters I am required to state to them in an independent examiner's report and for no other purpose. To the fullest extent permitted by law, I do not accept or assume responsibility to anyone other than the CIO and the CIO's trustees as a body for my examination work, for this report, or for the statements I have made.

Basis of independent examiner's statement

My examination was carried out in accordance with general directions given by the Charity Commission. An examination includes a review of the accounting records kept by the CIO and a comparison of the accounts presented with those records. It also includes consideration of any unusual items or disclosures in the accounts, and seeking explanations from the trustees concerning any such matters.

The procedures undertaken do not provide all the evidence that would be required in an audit, and consequently no opinion is given as to whether the accounts present a 'true and fair' view and the report is limited to those matters set out in the statement below.

Independent examiner's statement

I have completed my examination. I confirm that no material matters have come to my attention in connection with the examination giving me cause to believe that in any material respect:

- accounting records were not kept in respect of the CIO as required by section 130 of the Act; or
- the accounts do not accord with those records; or
- the accounts do not comply with the applicable requirements concerning the form and content of accounts set out in the Charities (Accounts and Reports) Regulations 2008 other than any requirement that the accounts give a 'true and fair' view which is not a matter considered as part of an independent examination.

I have no concerns and have come across no other matters in connection with the examination to which attention should be drawn in this report in order to enable a proper understanding of the accounts to be reached.

ANDREW PHILIP NASH FCA

MEMBER OF THE INSTITUTE OF CHARTERED ACCOUNTANTS IN ENGLAND AND WALES – 2461833

DATED: XXXXXXXX 2024

Andy Nash Accounting & Consultancy Ltd
Units 24 & 25
Goodsheds Container Village
Hood Road
Barry
CF62 5QU



Statement of financial activities

For the year ended 31 August 2023

		Unrestricted	Restricted	Total	Total
		Funds	Funds	Funds	Funds
		Year ended	Year ended	Year ended	Year ended
		31 Aug 2023	31 Aug 2023	31 Aug 2023	31 Aug 2022
	Notes	£	£	£	£
Income from:					
Donations and legacies	3	52,004	-	52,004	9,400
Other trading activities	4	11,846	-	11,846	-
Total income		63,850	-	63,850	9,400
Expenditure on:					
Raising funds	5	3,270	-	3,270	453
Charitable activities	5	70,453	-	70,453	47,330
Total expenditure		73,723	-	73,723	47,783
Net income/(expenditure)		(9,873)	-	(9,873)	(38,383)
Reconciliation of funds:					
Balance brought forward	9 & 10	19,270	-	19,270	57,653
Balance carried forward	9 & 10	9,397	-	9,397	19,270

The notes on pages 17 to 24 form part of the financial statements.

All the above results arise from continuing activities.

There were no other recognised gains or losses other than those stated above.

Balance sheet

As at 31 August 2023

	Notes	Total Funds 31 Aug 2023		Total Funds 31 Aug 2022
		£		£
Fixed assets				
Tangible fixed assets	6	3,656		7,157
Current assets				
Debtors	7	1,460	194	
Cash at bank and in hand		10,469	12,999	
Total current assets		11,929	13,193	
Creditors -				
amounts falling due within one year	8	(6,188)	(1,080)	
Net current assets		5,741		12,113
Net assets		9,397		19,270
Funds of the charity:				
Unrestricted funds				
General funds	9 & 10	9,397	19,270	
		9,397		19,270
Total funds		9,397		19,270

The notes on pages 17 to 24 form part of the financial statements.

All the above results arise from continuing activities.

There were no other recognised gains or losses other than those stated above.

These financial statements were approved and authorised for issue by the Board of Trustees on xxxxxx 2024 and signed on their behalf by:

CHARLOTTE CHURCH

FOUNDER AND CHAIR OF TRUSTEES

Notes to the financial statements

1. Accounting policies

Basis of preparation of the financial statements

The financial statements have been prepared in accordance with 'Charities SORP (FRS 102) - Accounting and Reporting by Charities: Statement of Recommended Practice applicable to charities preparing their accounts in accordance with the Financial Reporting Standard applicable in the UK and Republic of Ireland (FRS 102) second edition (effective 1 January 2019)', the Financial Reporting Standard applicable in the UK and Republic of Ireland (FRS 102), including Update Bulletin 1, and relevant charities law.

The effect of any event relating to the year ended 31 August 2023, which occurred before the date of approval of the financial statements by the Board of Trustees has been included in the financial statements to the extent required to show a true and fair view of the state of affairs at 31 August 2023 and the results for the year ended on that date.

The functional currency of the Charity is sterling and amounts in the financial statements are rounded to the nearest pound.

Using the exemption available to smaller charities the Board of Trustees has chosen not to include a Statement of Cash Flows within the financial statements.

Legal status

The Awen Project is a charitable incorporated organisation registered in England & Wales, and meets the definition of a public benefit entity. The registered office is The Spinney, Twyncyn, Dinas Powys, CF64 4AS.

Going concern

The Trustees have assessed whether the use of the going concern basis is appropriate and have considered possible events or conditions that might cast significant doubt on the ability of the Charity to continue as a going concern. The Trustees have made this assessment for a period of at least one year from the date of approval of the financial statements.

The Trustees have considered the Charity's forecasts and projections and have taken account of pressures on income. After making enquiries, the Trustees confirm that the Charity has adequate resources to continue in operational existence for the foreseeable future and that there are no material uncertainties that would impact this assessment. The ongoing COVID-19 pandemic has had no material impact on this assessment. The Charity therefore has adopted the going concern basis in preparing its financial statements.

Fund Accounting

General funds are unrestricted funds which are available for use at the discretion of the Trustees in furtherance of the general objectives of the Charity and which have not been designated for other purposes.

Restricted funds are funds that are to be used in accordance with specific restrictions imposed by donors or that have been raised by the Charity for particular purposes. The cost of raising and administering such funds are charged against the specific fund. There are currently no restricted funds within the Charity.

Income

All income is included in the Statement of Financial Activities when the Charity has entitlement, there is probability of receipt and the amount is measurable.

For donations and gifts this is when they are received. Gift Aid is recognised on a receivable basis as part of the income to which it relates.

Income from charitable activities and grants is credited to the Statement of Financial Activities when received or receivable whichever is earlier, unless it relates to a specific future period or event, in which case it is deferred.

Expenditure and irrecoverable VAT

Expenditure is accounted for on an accruals basis and liabilities are recognised as expenditure when there is a legal obligation committing the Charity to the expenditure, it is probable that settlement will be made, and the obligation can be measured.

Non-recoverable VAT is included against the expenditure heading to which it relates.

Indirect costs, including governance costs, which cannot be directly attributed to activities, are allocated between activities proportionate to the direct costs incurred in those activities.

Taxation

As a registered charity income and gains are exempt from Corporation Tax to the extent that they are applied to the charitable objectives.

Tangible fixed assets and depreciation

Tangible fixed assets are stated at cost less accumulated depreciation and any impairment losses, with individual assets over £500 being capitalised. Depreciation is provided for at a rate to ensure the items are written down over their useful economic life as follows:

- Container - 3 years
- Computer equipment - 3 years
- Equipment - 3 years

Cash at bank and in hand

Cash at bank and in hand includes cash in hand, deposits with banks and funds that are readily convertible into cash at, or close to, their carrying values, but are not held for investment purposes.

Debtors

Trade and other debtors are recognised at the settlement amount after any trade discount is applied.

Creditors

Creditors are recognised where the Charity has a present obligation resulting from a past event that will probably result in the transfer of funds to a third party, and the amount due to settle the obligation can be measured or estimated reliably.

Financial instruments

Basic financial instruments are measured at amortised cost other than investments which are measured at fair value.

Critical estimates and judgements

In preparing financial statements it is necessary to make certain judgements, estimates and assumptions that affect the amounts recognised in the financial statements. The treatment of tangible fixed assets is sensitive to changes in useful economic lives and residual values of assets. These are reassessed annually.

In the view of the Trustees in applying the accounting policies adopted, no judgements were required that have a significant effect on the amounts recognised in the financial statements nor do any estimates or assumptions made carry a significant risk of material adjustment in the next financial year.

2. Comparative statement of financial activities

		Unrestricted Funds Year ended 31 Aug 2022 £	Restricted Funds Year ended 31 Aug 2022 £	Total Funds Year ended 31 Aug 2022 £
Income from:				
Donations and legacies	3	9,400	-	9,400
Charitable activities	4	-	-	-
Total income		9,400	-	9,400
Expenditure on:				
Raising funds	5	453	-	453
Charitable activities	5	47,330	-	47,330
Total expenditure		47,783	-	47,783
Net income/(expenditure)		(38,383)	-	(38,383)
Reconciliation of funds:				
Balance brought forward	9 & 10	57,653	-	57,653
Balance carried forward	9 & 10	19,270	-	19,270

3. Income from donations and legacies

	Unrestricted Funds Year ended 31 Aug 2023 £	Restricted Funds Year ended 31 Aug 2023 £	Total Funds Year ended 31 Aug 2023 £
Donations	52,004	-	52,004
Total income from donations and legacies	52,004	-	52,004

	Unrestricted Funds Year ended 31 Aug 2022 £	Restricted Funds Year ended 31 Aug 2022 £	Total Funds Year ended 31 Aug 2022 £
Donations	9,400	-	9,400
Total income from donations and legacies	9,400	-	9,400

4. Income from other trading activities

	Unrestricted Funds	Restricted Funds	Total Funds
	Year ended	Year ended	Year ended
	31 Aug 2023	31 Aug 2023	31 Aug 2023
	£	£	£
Ticket sales for fundraising events	11,846	-	11,846
Total income from other trading activities	11,846	-	11,846

	Unrestricted Funds	Restricted Funds	Total Funds
	Year ended	Year ended	Year ended
	31 Aug 2022	31 Aug 2022	31 Aug 2022
	£	£	£
Ticket sales for fundraising events	-	-	-
Total income from other trading activities	-	-	-

5. Total expenditure

	Direct costs	Indirect costs	Total Funds
	Year ended	Year ended	Year ended
	31 Aug 2023	31 Aug 2023	31 Aug 2023
	£	£	£
Raising funds	2,997	273	3,270
Charitable activity	64,575	5,878	70,453
Total expenditure	67,572	6,151	73,723

	Direct costs	Indirect costs	Total Funds
	Year ended	Year ended	Year ended
	31 Aug 2022	31 Aug 2022	31 Aug 2022
	£	£	£
Raising funds	400	53	453
Charitable activity	41,795	5,535	47,330
Total expenditure	42,195	5,588	47,783

5. Total expenditure (continued)

Direct expenditure on raising funds includes the following items:

	Total Funds Year ended 31 Aug 2023	Total Funds Year ended 31 Aug 2022
	£	£
Fundraising consultancy support	2,997	400
Total direct expenditure on raising funds	2,997	400

Direct expenditure on charitable activities includes the following items:

	Total Funds Year ended 31 Aug 2023	Total Funds Year ended 31 Aug 2022
	£	£
Educationalists and other consultants	55,117	37,983
Staff Training	361	-
Other direct expenditure	9,097	3,812
Total direct expenditure on charitable activities	64,575	41,795

Indirect costs includes the following items:

	Total Funds Year ended 31 Aug 2023	Total Funds Year ended 31 Aug 2022
	£	£
Administration and other costs	2,775	2,628
Governance	3,376	2,960
Total indirect expenditure	6,151	5,588

Governance costs includes the following items:

	Total Funds Year ended 31 Aug 2023	Total Funds Year ended 31 Aug 2022
	£	£
Insurance expense	2,188	1,880
Independent examination	1,188	1,080
Total expenditure on governance	3,376	2,960

6. Tangible fixed assets

	Container £	Computer equipment £	Equipment £	Total £
Cost				
As at 1 September 2022	8,380	1,499	4,075	13,954
Additions in year	-	-	1,380	1,380
As at 31 August 2023	8,380	1,499	5,455	15,334
Accumulated depreciation				
As at 1 September 2022	5,051	727	1,019	6,797
Charge in year	2,793	500	1,588	4,881
As at 31 August 2023	7,844	1,227	2,607	11,678
Net book value				
As at 1 September 2022	3,329	772	3,056	7,157
As at 31 August 2023	536	272	2,848	3,656

7. Debtors

	Total 31 Aug 2023 £	Total 31 Aug 2022 £
Prepayments	225	194
Total debtors	225	194

8. Creditors - amounts falling due within one year

	Total 31 Aug 2023 £	Total 31 Aug 2022 £
Accruals	6,188	1,080
Total creditors - amounts due within one year	6,188	1,080

9. Analysis of charity funds

	Balance brought forward Year ended 31 Aug 2023 £	Income in period Year ended 31 Aug 2023 £	Expenditure in period Year ended 31 Aug 2023 £	Balance carried forward Year ended 31 Aug 2023 £
Unrestricted funds	19,270	63,850	(73,723)	9,397
Total charity funds	19,270	63,850	(73,723)	9,397

	Balance brought forward Year ended 31 Aug 2022 £	Income in period Year ended 31 Aug 2022 £	Expenditure in period Year ended 31 Aug 2022 £	Balance carried forward Year ended 31 Aug 2022 £
Unrestricted funds	57,653	9,400	(47,783)	19,270
Total charity funds	57,653	9,400	(47,783)	19,270

10. Analysis of net assets

	Unrestricted Funds 31 Aug 2023 £	Restricted Funds 31 Aug 2023 £	Total Funds 31 Aug 2023 £
Fixed assets	3,656	-	3,656
Current assets	11,929	-	11,929
Current liabilities	(6,188)	-	(6,188)
Total charity funds	9,397	-	9,397

	Unrestricted Funds 31 Aug 2022 £	Restricted Funds 31 Aug 2022 £	Total Funds 31 Aug 2022 £
Fixed assets	7,157	-	7,157
Current assets	13,193	-	13,193
Current liabilities	(1,080)	-	(1,080)
Total charity funds	19,270	-	19,270

11. Trustee remuneration

During the year, no Trustee received any remuneration (2022: £Nil). No members of the Board of Trustees received reimbursement of expenses related to attendance at Trustee meetings (2021/2 £Nil).

12. Related party transactions

During the current year, Jonathan Powell, who was formerly a trustee and is spouse of Charlotte Church, Chair of the Board of Trustees was remunerated a total of £17,500 (2022: £12,150) for his role as a educational consultant after resigning as a trustee in May 2021. This is permitted under the constitution and Charlotte was not involved in the decision making process nor the discussions around remuneration. His remuneration was at the same rate as other consultants, all of whom are paid below market rates.

Total unrestricted donations from trustees amounted to £Nil (2022: £Nil) in the period.

13. Guarantees and secured charges

As at 31 August 2023 the Charity did not have any outstanding guarantees to third parties nor any debts secured against assets of the Charity (2022: £Nil).

THE AWEN PROJECT

England & Wales - Charity number 1186305

Accounts



THE **AWEN PROJECT**
Trustees Annual Report and
Financial Statements
Year ended 31 August 2022

“Awen has changed my son’s life and I am forever grateful”

(Awen parent)



Contents

Welcome	4
Trustees' annual report	5
Objectives	5
Activities	5
Achievements and performance	5
Impact Report 2022	7
Goals for 2022/23	8
Financial review	9
Structure, governance and management	9
Statement of Board of Trustees' responsibilities	11
Independent examiner's report	13
Statement of financial activities	14
Balance sheet	15
Notes to the financial statements	16

Welcome

Like many, our 2021/2022 was a challenging one; still reeling from the impact of the pandemic and facing a looming cost of living crisis, we are more aware than ever of the impact that our communities, and our children will feel.

We know that spaces like the ones we have created at Awen are really important to children and families - and they are more than a place for education, but also a place for community and a place for connection - which is needed for our young people.

When I started this project I had a vision of radical change across the education system - none of us had expected to see such a radical change in the way we interact, the way we socialise and the way we learn brought on by things outside of our control. Of course that has had an impact on us all, but it has also shown many parents and guardians around the UK what is involved in homeschooling your child, or what alternatives we might have instead of mainstream school.

For many the pandemic has shown parents and guardians the value of having more participatory approach in their child's education and how viable that might be for them.

Despite the after effects of Covid 19, we have had a year full of hope and inspiration and the young people and families at The Awen Project have continued to develop their learning in a safe, supported, democratic and self directed way.

In the last year, our students have set up a band and been busking, been camping out and learning bushcraft and forest skills, immersed themselves in learning languages and philosophy, hosted a public exhibition. They've written poetry and studied two different plays; they've learned about the Russian Revolution, practised Capoeira and so much more. All while being surrounded by nature and led by a democratic model that hears them loud and clear.

We are however faced with the fallout from the pandemic - a rising cost of living and tightening purse stings - which is a huge challenge for a small charity like ours. Like many other smaller third sector agencies we are dependent on the support of funders who are prepared to think differently, our supporters and donors are crucial if we are to continue to offer an excellent and beneficial provision to many children and families in South Wales. We are looking forward to 2022/2023 with focus, determination and drive but would call on the radicals, the movers, the shakers, and the people that believe in our children to support us on our journey.

Charlotte Church

FOUNDER AND CHAIR OF TRUSTEES

THE AWEN PROJECT

Trustees' annual report

The Board of Trustees, submit their annual report and the financial statements of The Awen Project for the period ended 31 August 2022.

The Board of Trustees confirms that the annual report and financial statements of the Charity comply with current statutory requirements, including the Charity Act 2011, as well as the requirements of the Charity's governing document and the provisions of the 'Charities SORP (FRS 102) - Accounting and Reporting by Charities: Statement of Recommended Practice applicable to charities preparing their accounts in accordance with the Financial Reporting Standard applicable in the UK and Republic of Ireland (FRS 102) second edition (effective 1 January 2019)', the Financial Reporting Standard applicable in the UK and Republic of Ireland (FRS 102).

Objectives

The Awen Project is a Charitable Incorporated Organisation (CIO), registered with the Charity Commission for England and Wales (Charity number: 1186305).

The objects of The Awen Project are to advance education for the public benefit by the establishment of, or assisting in the establishment of, schools that are governed by participatory democracy.

Our aim is to pioneer a new model for education that is democratic, free-to-attend, and human-centred. We empower young people as participants within a learning community by providing conditions supportive of learning (rather than teaching) and supporting families to facilitate their children's education.

The Trustees have referred to the Charity Commission's guidance on public benefit when reviewing the Charity's objectives and activities.

Activities

The Awen Project is pioneering a human-centred model for education where children are valued as people in their own right who are allowed to be themselves as active participants in a community. We support them to become healthy, informed, and responsible members of a global society. Today we are running a learning community based in Dinas Powys, South Wales, developing our expertise and approach in partnership with leading experts in education and human development. We plan to extend our impact on the education system through building our home community and welcoming more students and families, piloting our Awen Lite programme that welcomes mainstream educated children and is a potential revenue stream to support the project, and offering training to teachers and education practitioners.

Our vision is to co-create a network of learning communities throughout the world where every human is valued. An Awen education empowers at all levels by training and supporting parents and carers to be present in their children's education, bringing meaning and purpose to everyone in the community. Our team of creative facilitators are developing a relationship-based pedagogy that will form the basis of a new model for education – to replicate around the world, not for our profit but for the profit of future generations.



Over the last year major progress was made in the following areas:

- Moved back into our forest location and helped create a site that is fit for purpose
- Worked with parents and guardians to set a framework for engagement;
- Developed our practice as democratic educators through structured training, reflection, and weekly staff supervision;
- Continued to refine our model so other communities might join us and help gather evidence to promote change within the UK education system.

Achievements and performance

We developed our forest space: After we identified some amazing forest space last year, we re-established our partnership with The Woodland Trust and continues to develop the land to be a space where we can learn alongside nature. For us this meant establishing a wellbeing unit, a dry storage space and establishing pathways that are safe. We

also had more exploring and discovering to do in our magical surroundings.

We were able to put up our covering - a task within itself! This helps us to integrate our selves into the forest but in a way that provides shelter and warmth.

Being in the forest also allows us to learn skills that help us focus, connect and learn with nature and create things that are useful. On our site we have been building with natural materials, creating some artistic installations in the woods and drawing art with the land. We have been whittling wands and crafts, as well as learning more practical natural skills - like plant identification and foraging.



Co-creation of ceremony We feel that we learn better when we feel part of something - a community. This is a space where we feel comfortable and engaged - where we all matter. It is an important part of The Awen Project to mark our initiation and end of year with a ceremony that all of us can design and take part in, and marks the beginning and end of our journey each year.

Together we were able to co-create our initiation with poetry, ceremony and unity. We were all able to make a pledge to ourselves and the group to commit to being kind and curious.

We were also able to co-create our closing ceremony; a chance to reflect on all we have learned, all we have done together and how much we have grown as individuals and as a group.



Our activities

This year has had another calendar of events and activities. These are important to learn new skills and take them out into the world - where we can apply real life context and experience to the things we have learned.

We went busking! Music is such a wonderful portal for expression - and our young people learned instruments and songs ready for a fantastic Christmas fundraising event where we took our performance out onto the streets of Cardiff to raise money for our project.

We have been camping! We have learned some practical and life skills by camping out in Mid Wales and in our woodland. This is a chance to make fire together, cook together, tell stories and learn about ourselves and each other. It is also an opportunity for us to experience our surroundings in a different way and in a different light.

We have learned so much! As a group our interest and curiosity has taken us to many places. We have been learning Spanish and French and have had fun playing games, reading and talking to each other in different languages.

We have studied psychology and learned how our brains and minds work.

We have also studied the Russian Revolution, studied two different plays - 'Caucasian Chalk Circle' by Brecht and a dramatisation of 'James and the Giant Peach' by Roald Dahl, and taken part in peer led biology lessons. To support this work we also had a visit from a professional actor who talked to us about his work, and led a class where we could learn some theatre skills.

We have learned the art of story telling by listening, writing and telling a whole range of incredible stories - nurturing our imaginations and our creativity and we have made films together too.

We have been looking after our physical and mental wellbeing by taking part in Capoeira sessions and by meeting and learning from a physiotherapist who came in talk to us.

Our community work: This year we have started a community day and dedicated one day of our learning week to community activities. These have included things like improving the woodland for everyone, cooking for the community and holding information days.





So that we could do this effectively, we organised ourselves into committees to allocate different roles to the group - learning how to use our skills and talents for the best as well as learning a load of new skills.

We have also hosted an open day for people to find out what The Awen Project is all about - and a chance for new parents, guardians and children to find out if its something that they would like to become a part of.

And we hosted our COW - or Celebration Of Work - where we can invite people in to see what we have been up to. We are able to publicly showcase our work and promote the benefits of learning this way to our whole community.

These community dates are always a great opportunity for us to grow in confidence as we share our knowledge, skills, talents and ideas - and we love to welcome people from near and far to become involved with us in some way.

Organisational achievements

Educational practices

This year we continued to meet regularly in our democratic meetings - The Gathering although we found that it is more effective to have more regular shorter sessions rather than one big one - this way we can focus our conversations into more defined action points in digestible chunks for our young people.

And as always, we have continued to explore the principles and mechanism of deep democracy to make sure that all voices are heard and remain equal.

Awen Families

The parents and guardians at The Awen Project have continued to hold their Guardian Gathering each week and this year we have been able to define the roles of that group further so that we can all support the people and the functions of that group really well. We have focused on building structure around how the parents and guardians can immerse themselves in the Awen experience fully - and through those conversations we were able to setup a group of parents who have been undertaking community activities We started this with a community litter pick, allowing us to take care of our local area whilst promoting the work that we do.



Strategic

We have refined our recruitment process for young people and families coming into Awen and have streamlined the process for people who express an interest in joining.

We are aware that we are now coming to the end of our pilot phase (August 2022) and we will be taking some time within the coming months to consolidate our impact data and learnings from the pilot evaluation in order to take us to the next stage in the Awen journey. Because of that we will not be taking on a new cohort of young people in September 2022, but will look to do that later in 2023.

On the last day of August our trustee, Hannah Fitt, became operational in the role of Director for two days a week, replacing John Carden as our operational lead. Due to the restricted capacity of operational staff, Hannah will be focussing on recruitment, impact data from our evaluation and fundraising.

Impact Report 2022

Students

Since joining Awen we have seen some amazing improvements in learning and wellbeing:

72% reported improved general **wellbeing**

82% reported having made **friends they can rely on**

We also saw a significant improvement in engagement in learning

87% reported that they had been able to **finish their work**

64% reported feeling **more confident with what they were doing**

And we are happy to see excellent results in the way our young people think about others around them.

69% reported that they would help others around them

Goals for 2022/23

The overarching aim for next year is to look to consolidate our pilot data and refine our vision and mission to be able to scale and grow.

We aim to take between 3 and 6 months to collect and interpret data from the last three years and look at the overall impact it has had on our children, families and community.

We will also look at the funding model and sustainability strategy to make sure we are robust enough to grow as we want.

We aim to make strong relationships with grand funders, individual supporters and other organisations and stakeholders to cultivate long lasting connections.

We will look to bring in more people to Awen (Children and families) in the spring term 2023.



Fundraising

- Our target is to raise £120k – £150k to cover core operating costs for the next two years. In this time, we will establish a set of income streams and develop a regular-giving base. We believe that philanthropic / major donors will offer the best chances of success and enable us to develop a network of partners who support our vision of a new, more human form of education.
- We will pilot ideas for Wild Journeys - focusing our partnerships on referral agencies like Youth Service and other learning clubs where there may be budgets to support the young people.
- Improve fundraising infrastructure, in particular the Awen Project's website, mailing list, and social media. Using these tools effectively will enable us to make the most of engagement with like-minded families and supporters to grow our community and raise funds.

Educational practices

- Maintain developmental approaches for staff (such as weekly supervision) that are working well to improve awareness and practice.
- Continue to formalise and document our educational model as we recognise the habits and structures that best support our students to flourish, recognising that the process of reflection and discovery is more important than the outcome and that there is no one-size-fits-all approach.
- Clarify areas of responsibility within the Learning Community (staff / students / families) and, wherever possible, the community should seek self-sufficiency.

Looking outwards

- Bring together like-minded parents and educators and support them to establish an Awen (or Awen-inspired) setting in their local community. Through collaborating with others, we will necessarily take a critical look at our own ways of being and doing at the same time as nurturing a new educational setting.

- Talk about our work, our approach, and why this is an important (and under-valued) educational discussion. Collaborate with other Learning Communities to critique and support each other and develop practice across our wider community.

Financial review

During the current financial period, which is also the first financial period of the Awen Project, the charity achieved a deficit of £38,383 (2021: surplus of £32,878), decreasing total reserves at year end to £19,270 (2021: £57,653). Income for the period was £9,400 (2021: £80,000) and expenditure was £47,783 (2021: £47,122).

Of the reserves held at year end £19,270 (2021: £57,653) were unrestricted in nature.

Reserves policy

The trustees are currently in the process of putting together a formal reserves policy, however the current reserves of £19,270 (2021: £57,653) are deemed sufficient for the stage at which the Charity currently is and the current financial obligations of the organisation.

Structure, governance and management

Governing document

The Charity was registered on 12 November 2019 as a charitable incorporated organisation (CIO) governed by its constitution and whose only voting members are the Trustees.

Recruitment and appointment of Trustees

Trustees are elected onto the Board through nomination by the current Trustee Board. New Trustees are provided with an induction by the current members.

Under the governing document, the number of Trustees shall not be less than three with no maximum number. A quorum is formed when one half of the Trustees are present or three, whichever is the greater number. All decisions are made by the Trustees.

Risk management

The trustees review, on an annual basis, the major risks which the charity faces to ensure that it has sufficient resources in the event of adverse conditions. The trustees have examined the operational and business risks which the charity faces and confirm that they are satisfied that systems and controls are established over key financial systems to mitigate any significant risks.

The main risks facing the Charity are as follows:

Education Outcomes, Legislation, and Compliance

Working with young people is a privilege that comes with significant responsibility. In promoting an alternative approach to mainstream education, we must not assume that because we have positive intent that this will automatically yield positive results for the young people in our care.

To ensure the well-being and development of our young people:

- We work with experts to inform our approach and ensure we are guided by research and the experience of more established democratic schools;
- Students participate in weekly coaching sessions to discuss their aims, progress, and any challenges they may currently be facing;
- Students complete regular self-assessments to understand how they are developing across a range of holistic measures (a broader set of measures than mainstream schools, that includes academic outcomes);
- We engage our parents / carers as partners in their children's education, which necessitates far better, deeper, and more frequent dialogue than would be normal for a mainstream setting;
- Most importantly, we listen to our young people: they are in charge of their own learning, with choice and real power over what they do and how their community is run.

There are many laws and regulations that govern the education and care of young people. We currently operate as a learning community of Elective Home Educated children and our provision is for fewer than 17 hours per week / 50% of a standard school week.

Financial sustainability

We are a young organisation and have not yet established reliable income sources with which to sustain ourselves over the longer term. To address this we are engaging with potential donors to provide further funding, with support from experienced fundraisers. Covid-19 has materially affected trusts and foundations resulting in a more challenging funding environment, especially for less well established charities like us.

There are opportunities for us to create reliable income streams by expanding our offering to include mainstream educated children and teachers, and we plan to launch pilot programmes over the next 12 months to test the market.

Health and safety

As our community is based primarily in the forest, there are many risks we need to be aware of and these change over time, for example trees may fall down after a storm and high winds make the site unsafe. In addition to basic safety checks and policies, our students perform regular site audits. We have appropriate insurance in place for an education setting, including public liability insurance.

Legal and administrative information

Charity name

The Awen Project

Charity registration no.

1186305

Company registration no.

CE019562

Registered office

The Spinney
Twyncyn
Dinas Powys
CF64 4AS

Trustees

Charlotte Church	Chair	
Hannah Fitt	Vice-Chair	resigned 15 August 2022
Sean Bellamy		
Nicola Blenman		
John Farrell		
Stella Smith		

Independent examiner

Andy Nash Accounting & Consultancy Ltd
Units 24 & 25
Goodsheds Container Village
Hood Road
Barry
CF62 5QU

Statement of Board of Trustees' responsibilities

The Trustees are responsible for preparing the Trustees' Annual Report and the financial statements in accordance with applicable law and regulations.

Charity law requires the Trustees to prepare financial statements for each financial year. Under that law they are required to prepare the financial statements in accordance with UK Accounting Standards and applicable law (UK Generally Accepted Accounting Practice), including FRS 102 The Financial Reporting Standard applicable in the UK and Republic of Ireland.

Under charity law the Trustees must not approve the financial statements unless they are satisfied that they give a 'true and fair' view of the state of affairs of the Charity and of the excess of income over expenditure for that period. In preparing these financial statements, the Trustees are required to:

- select suitable accounting policies and then apply them consistently;
- make judgements and estimates that are reasonable and prudent;
- state whether applicable UK Accounting Standards have been followed, subject to any material departures disclosed and explained in the financial statements; and,
- prepare the financial statements on the going concern basis unless it is inappropriate to presume that the Charity will continue its activities.

The Trustees are responsible for keeping adequate accounting records that are sufficient to show and explain the Charity's transactions and disclose with reasonable accuracy at any time the financial position of the Charity and enable them to ensure that the financial statements comply with the Charities Act 2011. They have general responsibility for taking such steps as are reasonably open to them to safeguard the assets of the Charity and to prevent and detect fraud and other irregularities.

The Trustees are responsible for the maintenance and integrity of the corporate and financial information included on the Charity's website.

Legislation in the UK governing the preparation and dissemination of financial statements may differ from legislation in other jurisdictions. In addition, the Trustees confirm that they are happy that the content of the Annual Review in pages 5-12 meet the requirements of the Trustees' Annual Report under charity law.

They also confirm that the financial statements have been prepared in accordance with the accounting policies set out in the notes to the accounts and comply with the Charity's governing document, the Charities Act 2011 and Accounting and Reporting by Charities: Statement of Recommended Practice applicable to charities preparing their accounts in accordance with FRS 102, The Financial Reporting Standard applicable in the UK and Republic of Ireland published on 16 July 2014.

This report was approved and authorised for issue by the Board of Trustees on 25 May 2023 and signed on its behalf by:



Charlotte Church (May 26, 2023 13:25 GMT+1)

CHARLOTTE CHURCH

FOUNDER AND CHAIR OF TRUSTEES

Trustee spotlight: John Farrell

John Farrell is an Engineer by background with specialisms in Low Carbon Buildings and Sustainable development. In 2008, John and his partners set up XCO2, a low carbon consultancy focused on reducing CO2 emissions in the built environment. They work on both on the design of new buildings whilst also advising building owners and users on how to decarbonise existing buildings. John's work at XCO2 has led him to work in more than 40 countries around the world enriching his knowledge and understanding of different cultures, climates and environmental and social challenges. John applies this knowledge in the way that he works and enjoys passing it on to his peers, colleagues and students. John has been a teacher at third level education, a tutor and guest lecturer at several notable universities in the UK.



What was it that attracted you to the Awen Project?

Having been brought up through a very regimented education system in primary and secondary school I was put on a path to study engineering and although I am grateful for the opportunities that it brought me, I learned later that there was a lack of free thinking in such a rigid system. Later I would learn that most of my knowledge came from travelling the world and working in different climates with people from very different backgrounds to my own. I often found that in some countries, some tribes were using methods of construction that suited their specific climate but without having to figure out those design techniques from any first principles. I also learned that the value they put on formal education based learning over survival skills such as hunting or craft, was limited only to where it was necessary. Traditional education values those that score high on a fixed curriculum but what I have learned travelling and working around the world is that some of the most intelligent people I have met, have had no formal education system at all, many of them have learned skills and others have had a natural interest in very specific subjects becoming experts in their community.

I remember one afternoon whilst teaching architectural students in a London University and one of the students was presenting her project work to me. She had brought in reams and reams of wallpaper samples and then began to layer on hand sketches to it. She had imagined that within the wallpaper lived civilisations and she had decided for her project that she would design a city within the wallpaper for one of these civilisations. I was so impressed by her free thinking and how she didn't constrain herself in her work like so many of the other students did. It made me think how much more interesting primary and secondary school would be if we gave children the same level of freedom to explore and develop their own ideas, no matter how bizarre or unusual they might seem.

I first found out about The Awen Project through social media when they made a call out for people with experience in sustainable design and buildings. I reached out initially offering a hand to help with what I thought would be the design of a physical building and from there learned much more of what Awen was all about. I have been blown away by the interest the children have taken in environmental design and having given some tutorials on the subject, the children have returned with some amazing designs of their own and ideas about how they see Awen developing in the future.

I am proud to be a Trustee at Awen and look forward to seeing more generations of students passing through over the coming years.

John Farrell

JOHN FARRELL

TRUSTEE

Independent examiner's report

I report to the trustees on my examination of the accounts of The Awen Project (charity number 1186305) for the year ended 31 August 2022 set out on pages 14 to 22.

Respective responsibilities of trustees and examiner

The CIO's trustees are responsible for the preparation of the accounts in accordance with the requirements of the Charities Act 2011 (the Charities Act). The CIO's trustees consider that an audit is not required for this year under section 144 of the Charities Act and that an independent examination is needed.

It is my responsibility to:

- examine the accounts under section 145 of the Charities Act;
- to follow the procedures laid down in the general Directions given by the Charity Commission under section 145(5)(b) of the Charities Act; and,
- to state whether particular matters have come to my attention.

This report, including my statement, has been prepared for and only for the CIO's trustees as a body. My work has been undertaken so that I might state to the CIO's trustees those matters I am required to state to them in an independent examiner's report and for no other purpose. To the fullest extent permitted by law, I do not accept or assume responsibility to anyone other than the CIO and the CIO's trustees as a body for my examination work, for this report, or for the statements I have made.

Basis of independent examiner's statement

My examination was carried out in accordance with general directions given by the Charity Commission. An examination includes a review of the accounting records kept by the CIO and a comparison of the accounts presented with those records. It also includes consideration of any unusual items or disclosures in the accounts, and seeking explanations from the trustees concerning any such matters.

The procedures undertaken do not provide all the evidence that would be required in an audit, and consequently no opinion is given as to whether the accounts present a 'true and fair' view and the report is limited to those matters set out in the statement below.

Independent examiner's statement

I have completed my examination. I confirm that no material matters have come to my attention in connection with the examination giving me cause to believe that in any material respect:

- accounting records were not kept in respect of the CIO as required by section 130 of the Act; or
- the accounts do not accord with those records; or
- the accounts do not comply with the applicable requirements concerning the form and content of accounts set out in the Charities (Accounts and Reports) Regulations 2008 other than any requirement that the accounts give a 'true and fair' view which is not a matter considered as part of an independent examination.

I have no concerns and have come across no other matters in connection with the examination to which attention should be drawn in this report in order to enable a proper understanding of the accounts to be reached.



ANDREW PHILIP NASH ACA

MEMBER OF THE INSTITUTE OF CHARTERED ACCOUNTANTS IN ENGLAND AND WALES – 2461833

DATED: 25 MAY 2023

Andy Nash Accounting & Consultancy Ltd
Units 24 & 25
Goodsheds Container Village
Hood Road
Barry
CF62 5QU

Charity number 1186305

Statement of financial activities

For the year ended 31 August 2022

		Unrestricted Funds	Restricted Funds	Total Funds	Total Funds
		Year ended 31 Aug 2022	Year ended 31 Aug 2022	Year ended 31 Aug 2022	Year ended 31 Aug 2021
	Notes	£	£	£	£
Income from:					
Donations and legacies	3	9,400	-	9,400	80,000
Total income		9,400	-	9,400	80,000
Expenditure on:					
Raising funds	4	453	-	453	2,297
Charitable activities	4	47,330	-	47,330	44,825
Total expenditure		47,783	-	47,783	47,122
Net income/(expenditure)		(38,383)	-	(38,383)	32,878
Reconciliation of funds:					
Balance brought forward	8 & 9	57,653	-	57,653	24,775
Balance carried forward	8 & 9	19,270	-	19,270	57,653

The notes on pages 16 to 22 form part of the financial statements.

All the above results arise from continuing activities.

There were no other recognised gains or losses other than those stated above.

Balance sheet

As at 31 August 2022

	Notes	Total Funds 31 Aug 2022		Total Funds 31 Aug 2021
		£		£
Fixed assets				
Tangible fixed assets	5	7,157		7,394
Current assets				
Debtors	6	194	163	
Cash at bank and in hand		12,999	53,986	
Total current assets		13,193	54,149	
Creditors -				
amounts falling due within one year	7	(1,080)	(3,890)	
Net current assets		12,113		50,259
Net assets		19,270		57,653
Funds of the charity:				
Unrestricted funds				
General funds	8 & 9	19,270	57,653	
		19,270		57,653
Total funds		19,270		57,653

The notes on pages 16 to 22 form part of the financial statements.

All the above results arise from continuing activities.

There were no other recognised gains or losses other than those stated above.

These financial statements were approved and authorised for issue by the Board of Trustees on 25 May 2023 and signed on their behalf by:



Charlotte Church (May 26, 2023 13:25 GMT+1)

CHARLOTTE CHURCH

FOUNDER AND CHAIR OF TRUSTEES

Notes to the financial statements

1. Accounting policies

Basis of preparation of the financial statements

The financial statements have been prepared in accordance with 'Charities SORP (FRS 102) - Accounting and Reporting by Charities: Statement of Recommended Practice applicable to charities preparing their accounts in accordance with the Financial Reporting Standard applicable in the UK and Republic of Ireland (FRS 102) second edition (effective 1 January 2019)', the Financial Reporting Standard applicable in the UK and Republic of Ireland (FRS 102), including Update Bulletin 1, and relevant charities law.

The effect of any event relating to the period ended 31 August 2022, which occurred before the date of approval of the financial statements by the Board of Trustees has been included in the financial statements to the extent required to show a true and fair view of the state of affairs at 31 August 2022 and the results for the year ended on that date.

The functional currency of the Charity is sterling and amounts in the financial statements are rounded to the nearest pound.

Using the exemption available to smaller charities the Board of Trustees has chosen not to include a Statement of Cash Flows within the financial statements.

Legal status

The Awen Project is a charitable incorporated organisation registered in England & Wales, and meets the definition of a public benefit entity. The registered office is The Spinney, Twyncyn, Dinas Powys, CF64 4AS.

Going concern

The Trustees have assessed whether the use of the going concern basis is appropriate and have considered possible events or conditions that might cast significant doubt on the ability of the Charity to continue as a going concern. The Trustees have made this assessment for a period of at least one year from the date of approval of the financial statements.

The Trustees have considered the Charity's forecasts and projections and have taken account of pressures on income. After making enquiries, the Trustees confirm that the Charity has adequate resources to continue in operational existence for the foreseeable future and that there are no material uncertainties that would impact this assessment. The ongoing COVID-19 pandemic has had no material impact on this assessment. The Charity therefore has adopted the going concern basis in preparing its financial statements.

Fund Accounting

General funds are unrestricted funds which are available for use at the discretion of the Trustees in furtherance of the general objectives of the Charity and which have not been designated for other purposes.

Restricted funds are funds that are to be used in accordance with specific restrictions imposed by donors or that have been raised by the Charity for particular purposes. The cost of raising and administering such funds are charged against the specific fund. There are currently no restricted funds within the Charity.

Income

All income is included in the Statement of Financial Activities when the Charity has entitlement, there is probability of receipt and the amount is measurable.

For donations and gifts this is when they are received. Gift Aid is recognised on a receivable basis as part of the income to which it relates.

Income from charitable activities and grants is credited to the Statement of Financial Activities when received or receivable whichever is earlier, unless it relates to a specific future period or event, in which case it is deferred.

Expenditure and irrecoverable VAT

Expenditure is accounted for on an accruals basis and liabilities are recognised as expenditure when there is a legal obligation committing the Charity to the expenditure, it is probable that settlement will be made, and the obligation can be measured.

Non-recoverable VAT is included against the expenditure heading to which it relates.

Indirect costs, including governance costs, which cannot be directly attributed to activities, are allocated between activities proportionate to the direct costs incurred in those activities.

Taxation

As a registered charity income and gains are exempt from Corporation Tax to the extent that they are applied to the charitable objectives.

Tangible fixed assets and depreciation

Tangible fixed assets are stated at cost less accumulated depreciation and any impairment losses, with individual assets over £500 being capitalised. Depreciation is provided for at a rate to ensure the items are written down over their useful economic life as follows:

- Container - 3 years
- Computer equipment - 3 years
- Jurte tent - 3 years

Cash at bank and in hand

Cash at bank and in hand includes cash in hand, deposits with banks and funds that are readily convertible into cash at, or close to, their carrying values, but are not held for investment purposes.

Debtors

Trade and other debtors are recognised at the settlement amount after any trade discount is applied.

Creditors

Creditors are recognised where the Charity has a present obligation resulting from a past event that will probably result in the transfer of funds to a third party, and the amount due to settle the obligation can be measured or estimated reliably.

Financial instruments

Basic financial instruments are measured at amortised cost other than investments which are measured at fair value.

Critical estimates and judgements

In preparing financial statements it is necessary to make certain judgements, estimates and assumptions that affect the amounts recognised in the financial statements. The treatment of tangible fixed assets is sensitive to changes in useful economic lives and residual values of assets. These are reassessed annually.

In the view of the Trustees in applying the accounting policies adopted, no judgements were required that have a significant effect on the amounts recognised in the financial statements nor do any estimates or assumptions made carry a significant risk of material adjustment in the next financial year.

2. Comparative statement of financial activities

		Unrestricted Funds Year ended 31 Aug 2021	Restricted Funds Year ended 31 Aug 2021	Total Funds Year ended 31 Aug 2021
	Notes	£	£	£
Income from:				
Donations and legacies	3	80,000	-	80,000
Charitable activities	4	-	-	-
Total income		80,000	-	80,000
Expenditure on:				
Raising funds	5	2,297	-	2,297
Charitable activities	5	44,825	-	44,825
Total expenditure		47,122	-	47,122
Net income/(expenditure)		32,878	-	32,878
Reconciliation of funds:				
Balance brought forward	9 & 10	24,775	-	24,775
Balance carried forward	9 & 10	57,653	-	57,653

3. Income from donations and legacies

	Unrestricted Funds Year ended 31 Aug 2022	Restricted Funds Year ended 31 Aug 2022	Total Funds Year ended 31 Aug 2022
	£	£	£
Donations	9,400	-	9,400
Total income from donations and legacies	9,400	-	9,400

	Unrestricted Funds Year ended 31 Aug 2021	Restricted Funds Year ended 31 Aug 2021	Total Funds Year ended 31 Aug 2021
	£	£	£
Donations	80,000	-	80,000
Total income from donations and legacies	80,000	-	80,000

4. Total expenditure

	Direct costs Year ended 31 Aug 2022 £	Indirect costs Year ended 31 Aug 2022 £	Total Funds Year ended 31 Aug 2022 £
Raising funds	400	53	453
Charitable activity	41,795	5,535	47,330
Total expenditure	42,195	5,588	47,783

	Direct costs Year ended 31 Aug 2021 £	Indirect costs Year ended 31 Aug 2021 £	Total Funds Year ended 31 Aug 2021 £
Raising funds	2,000	297	2,297
Charitable activity	39,034	5,791	44,825
Total expenditure	41,034	6,088	47,122

Direct expenditure on raising funds includes the following items:

	Total Funds Year ended 31 Aug 2022 £	Total Funds Year ended 31 Aug 2021 £
Fundraising consultancy support	400	2,000
Total direct expenditure on raising funds	400	2,000

Direct expenditure on charitable activities includes the following items:

	Total Funds Year ended 31 Aug 2022 £	Total Funds Year ended 31 Aug 2021 £
Educationalists and other consultants	37,983	33,787
Other direct expenditure	3,812	5,247
Total direct expenditure on charitable activities	41,795	39,034

Indirect costs includes the following items:

	Total Funds Year ended 31 Aug 2022 £	Total Funds Year ended 31 Aug 2021 £
Administration and other costs	2,628	3,408
Governance	2,960	2,680
Total indirect expenditure	5,588	6,088

Governance costs includes the following items:

	Total Funds Year ended 31 Aug 2022 £	Total Funds Year ended 31 Aug 2021 £
Insurance expense	1,880	1,600
Independent examination	1,080	1,080
Total expenditure on governance	2,960	2,680

5. Tangible fixed assets

	Container £	Computer equipment £	Jurte tent £	Total £
Cost				
As at 1 September 2021	8,380	1,499	-	9,879
Additions in year	-	-	4,075	4,075
As at 31 August 2022	8,380	1,499	4,075	13,954
Accumulated depreciation				
As at 1 September 2021	2,258	227	-	2,485
Charge in year	2,793	500	1,019	4,312
As at 31 August 2022	5,051	727	1,019	6,797
Net book value				
As at 1 September 2021	6,122	1,272	-	7,394
As at 31 August 2022	3,329	772	3,056	7,157

6. Debtors

	Total	Total
	31 Aug 2022	31 Aug 2021
	£	£
Prepayments	194	163
Total debtors	194	163

7. Creditors - amounts falling due within one year

	Total	Total
	31 Aug 2022	31 Aug 2021
	£	£
Accruals	1,080	3,890
Total creditors - amounts due within one year	1,080	3,890

8. Analysis of charity funds

	Balance brought forward Year ended 31 Aug 2022	Income in period Year ended 31 Aug 2022	Expenditure in period Year ended 31 Aug 2022	Balance carried forward Year ended 31 Aug 2022
	£	£	£	£
Unrestricted funds	57,653	9,400	(47,783)	19,270
Total charity funds	57,653	9,400	(47,783)	19,270

	Balance brought forward Year ended 31 Aug 2021	Income in period Year ended 31 Aug 2021	Expenditure in period Year ended 31 Aug 2021	Balance carried forward Year ended 31 Aug 2021
	£	£	£	£
Unrestricted funds	24,775	80,000	(47,122)	57,653
Total charity funds	24,775	80,000	(47,122)	57,653

9. Analysis of net assets

	Unrestricted Funds 31 Aug 2022 £	Restricted Funds 31 Aug 2022 £	Total Funds 31 Aug 2022 £
Fixed assets	7,157	-	7,157
Current assets	13,193	-	13,193
Current liabilities	(1,080)	-	(1,080)
Total charity funds	19,270	-	19,270

	Unrestricted Funds 31 Aug 2021 £	Restricted Funds 31 Aug 2021 £	Total Funds 31 Aug 2021 £
Fixed assets	7,394	-	7,394
Current assets	54,149	-	54,149
Current liabilities	(3,890)	-	(3,890)
Total charity funds	57,653	-	57,653

10. Trustee remuneration

During the year, no Trustee received any remuneration (2021: £Nil). No members of the Board of Trustees received reimbursement of expenses related to attendance at Trustee meetings (2021: £Nil).

On 15 August 2022 Hannah Fitt resigned as a trustee. After this date she was paid £1,100 for services provided after this date for her role as director.

11. Related party transactions

During the current year, Jonathan Powell, who was formerly a trustee and is spouse of Charlotte Church, Chair of the Board of Trustees was remunerated a total of £12,150 (2021: £2,810) for his role as a educational consultant after resigning as a trustee in May 2021. This is permitted under the constitution and Charlotte was not involved in the decision making process nor the discussions around remuneration. His remuneration was at the same rate as other consultants, all of whom are paid below market rates.

Total unrestricted donations from trustees amounted to £Nil (2021: £Nil) in the period.

12. Guarantees and secured charges

As at 31 August 2022 the Charity did not have any outstanding guarantees to third parties nor any debts secured against assets of the Charity (2021: £Nil).

THE AWEN PROJECT

England & Wales - Charity number 1186305

Accounts



THE **AWEN PROJECT**
Trustees Annual Report and
Financial Statements
Year ended 31 August 2021

“Awen has made me feel like part of a big family. It’s given us some tools that we use at home... and some wonderful new life-long friendships.”

(Awen parent)



Contents

Welcome	4
Trustees' annual report	5
Objectives	5
Activities	5
Achievements and performance	6
Organisational achievements	7
Impact Report 2021	8
Goals for 2021/22	9
Financial review	10
Structure, governance and management	10
Legal and administrative information	11
Statement of Board of Trustees' responsibilities	13
Independent examiner's report	14
Statement of financial activities	15
Balance sheet	16
Notes to the financial statements	17

Welcome

The Covid-19 pandemic has shocked the world with devastating impact on people's lives and health. Whilst we are still trying to overcome this current disaster, we are experiencing an increase in frequency and magnitude of extreme weather events in line with the predictions of climate scientists who warn of much worse to come.

The future looks like it's going to be a mess; our kids are the ones who will have to face up to its challenges.

If young people are to have any hope in succeeding, we need to prepare them with the competencies and dispositions they will need to solve the complex, global challenges of our age. Doing this means that we've got to break with the outdated practices of conventional education that no longer serve their purpose.

The Awen Project is doing just that: we're setting up small, free-to-attend learning communities that treat children like they are capable human beings and engage with families as partners in their child's education. We set up our first learning tribe in the forest in South Wales and my dream is that all our learning communities will be based outside in nature.

We know that people learn best when they are interested in something. An Awen education allows young people the freedom to find and follow their own interests, intellectual and creative, free from a rigid curriculum that contains a load of stuff that they will never use. Our students learn to love learning and they are required to be socially responsible members of a community. All the while we're helping them figure out who they are, so by the time they're adults they have the self-knowledge they need to lead a happy, healthy life.

Right now, most families have no choice over how their children are educated. Private schools are unaffordable and unfair and, for most working parents, home education is too much of an ask and it can be socially isolating. Mainstream schools may be brilliant for some, but most teachers would agree that they are far from optimal learning environments, and many of our young people are having a totally miserable time.

Awen Learning communities focus first on wellbeing because if you're not ok you're not gonna be learning anything anyway. We get to know each student, to understand their individual needs and passions. Our young people are not products being fed through a system, but collaborators in a community that values their opinions and efforts.

In the last year, our students have filmed a production of Macbeth, transformed trash collected in the woods into monster sculptures to ward off fly-tippers and litter bugs, and built an online school to stay connected during lockdowns. They have participated in educational role playing games, set in the year 2050, or ancient Britain, or in modern day Afghanistan. They write poetry and paint watercolours in the forest; they learn to identify plants and observe the seasonal changes in an ecosystem that they are a part of. They learn history, languages, economics and psychology. We're not doing anything untested or revolutionary. This is the way they do it in countries that are seen as world leaders in education. And Britain is getting left in the dust.

We are trying to do something huge here. We want to radically change the face of education by setting up learning communities all over the country, to offer children and parents a choice that isn't dependent upon financial circumstances. For this we need fellow travellers and donors who can help us turn children's lives around, and be a part of raising a generation of intelligent, creative, responsible adults who can be the change we need to see.

Across the UK, parents can see the harms inflicted on their children by our out-dated, ineffective, and inhumane education system. The coronavirus pandemic and resulting school closures have exacerbated this further. Now, more than ever, is the time to reinvent our education system and make it fit for the future.

Charlotte Church

FOUNDER AND CHAIR OF TRUSTEES

THE AWEN PROJECT

Achievements and performance

Awen moved to the forest at the start of the 2020/21 academic year, with a base in Casehill Woods thanks to a new partnership with the Woodland Trust. We were drawn to this site because we are committed to helping children, families, and communities reconnect with nature. Children can be caretakers of this fledgling forest, learning about sustainability in all its forms (from environmental management to eco-buildings and community energy projects), and growing up alongside this woodland.

The Woodland Trust shares many of our values and takes a unique (and research informed) approach to restoring ancient woodland. It is often possible to bring an ancient woodland back from the brink and the process is remarkably simple: Ancient woodland has the capacity to restore itself to full health; it needs only the right conditions. “Carefully increasing the light levels allows surviving plants, trees and fungi to adapt slowly, meaning restoration is much more likely to be successful.” (Woodland Trust website)

Like the ancient woodland, each of our students has the capacity to flourish; an Awen education seeks to provide the right conditions.



Mapping the dreaming. In the first few weeks of learning in the forest the students mapped out our tribe’s territory, naming the different areas and routes as they went, with world-renowned memory expert Lynn Kelly. By superimposing a map of the world on top of their map, we assigned certain trees and bushes as countries, pathways as seas and rivers, inspired by the aboriginal concept of “the dreaming”. We would walk into the woods along the east coast of Russia and China, down through east Asia and into the Indian Ocean where we had our main camp. Another route represented the Mediterranean, with the north coast of Africa on one side and Southern Europe on the other.

“Memories of the Future” was a live-action role-player game set in the year 2050 that we played throughout the Autumn and Winter of 2020. Each student had a character profile specially written for them so that it would spark their individual passions and lead them to discoveries that we knew would inspire them. The game was global in its outlook and had characters from different parts of the world that was dealing with the ecological and geo-political effects of climate change. An Ecuadorian bio-engineer, the mayor of Manila, a nurse from Kiribati, an Anglican vicar, a foreign aid worker in Iraq, the head of the Tokyo Yakuza, a Vietnamese monk, the President of the Guild of Gondoliers in Venice, among others, had to manage crises through problem solving, collaboration and diplomacy. Students were emotionally invested in their character’s success and whilst performing code-breaking, letter-writing, public addresses, creative design and the occasional (dice based) fist fight, they were learning about geography, culture, politics, engineering, and ecology.

Population: 582 Million
(24.4M x200)
Currency: African Dollar (AFD) (USD)
Name: (2020) #1120202
Language: English

- Lagos remains the most highly populated city in Africa, and richest after the collapse of the South African and Nigerian economies.
- It is now the largest city in Africa and the gate of the central bank for the African Dollar, the international currency of the African continent since 2020.
- Named the 6th richest city to live in the world by Time magazine.
- It is the largest city in Africa and the most densely populated city in the world.
- Hundreds of thousands of climate refugees from the north have gathered in slums on the coast.
- There are no forests of any kind left in the world.
- Any remaining rain forest is now in the hands of a handful of states.
- Most deforestation was completed by 2020.
- Victims of the 2020 global pandemic were left in a state of despair and both are now unrecognizable.
- There is also the mysterious and violent group known as the Order, which seeks a total global reset of the world.
- There are reports that the new “secret weapon” has fallen into the hands of a wealthy who goes by the name “High Command” but it is not clear who they are.
- The global group the ADA, which claims that the world is ending, is becoming more active in the world of Lagos too.

CHARACTER PROFILE

You are King of the best Christopher Okafor, age 35. A Nigerian-born environmental scientist, who has moved here to be working on your 2020 work with your latest, experimental project that getting close to the actual business of governments, but more recently you are coming under pressure from human rights organisations to do something about the refugee crisis at your city’s gates. A “Secret Weapon” campaign has started, but it is not clear who they are.

With the success of Major-General Sledge Butler’s secret weapon, looking more and more likely to be true, and the constant risks concern your position here in the Lagos One Group. It is for certain, you will like to see you at the start and end of a season. There is always the possibility of getting your attention on the sun, and the Lagos One Group for Christ, but the will take a change of heart from the surface to the ground you have adapted. To play you are a good man who has been here for a long time.

Area: USA, South Africa
Residence: Europe, United States of America and India
Enemies: China, Russia
Character Roles: Leadership (L), Diplomacy (D), Strategy (S), Tactics (T), Support (C)



A digital Awen on Gathertown. During the first COVID-19 closures, Awen used Zoom to provide support for our students online. Moving to Gathertown transformed our online experience into a dynamic environment that we could build together with our students.

With 1980s style graphics and movable avatars, we built areas for students and staff to come together for “offerings” (optional workshops) and designed dedicated spaces for collaboration, such as Philosophy lab.

Working in this way we were able to incorporate successful educational practices from the woods to the online environment, and generate new ways of working that we continue to use in the forest.

“In the second lockdown we began a new and exciting learning platform called Gathertown. On this website you had a pixelated avatar who could move around in a customisable space. In this space we began many new lessons such as Poetry where we explored the works of Emily Dickinson, or The Logic lab where we worked on maths and science.”

(Awen student)

An online open day and guided tour! Awen students invited family members, trustees, and others to join them for a tour of Château Awen and to celebrate their online home. Guests were given the opportunity to take part in offerings in our various lab spaces, such as the music room or poetry in the graveyard, and to ask students about their experience of co-creating an online learning community. Whilst everyone was eager to get back to the woods, it was important for

our community to recognise the value of our online home during the isolation of lockdown.



Café Sensorial. As Autumn arrived in the forest and the days grew shorter, the Awen community collaborated with Theatre Director Iwan Brioc to create an immersive sensory labyrinth theatre piece set in the forest. As Iwan explained, this approach engages the “...suppressed sensitivity of human sensory perception and the suppressed capacity of luminosity inherent in everyday experience. Individual audience members journey alone through a darkened three-dimensional labyrinth and along the way encounter moments and meetings that p r o v o k e subconscious sensory memories (sensory portals) into which they are gently invited to fall.”

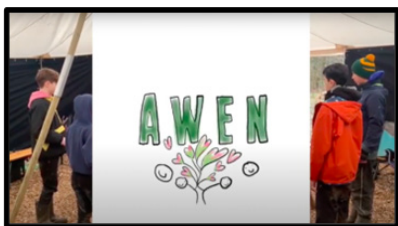
At the Café Sensorial, guests were offered a menu of experiences from which to choose, each choice curated and facilitated by different groups of students. “In accepting this invitation, constructs such as time and space, me and you, the inner and the outer start to collapse.” In devising this work, students explored ideas of human connection, conflict, and community, reflecting on their personal experiences within Awen and the relationship between students and families.

Macbeth. A gross and deadly plague has swept the nations of the world, killing everyone over the age of fourteen. The remaining young people have formed gaming squads that can offer protection, whilst competing to be the G.O.A.T. One such squad is led by the mysterious King Dunc... and so begins Awen’s dark reimagining of Shakespeare’s Macbeth.



Trash Monsters. A sculpture exhibition in Casehill Woods made using rubbish collected from woodlands, beaches, and streets, to ward off littering and fly-tipping. Each monster represented the creator’s “soul” or “anima” (see Carl Jung) and students took part in activities such as guided meditation to find their “soul-name”, or inner monster. Students’ discoveries about their inner monsters formed the basis of the Trash Monsters’ biographies, which were presented alongside each sculpture.

Carl Jung, and Donald Trump. Students and their families collected trash, cleaned and prepared it for use as materials, and then constructed their sculptures on site in the woods. To protect our monsters, families took turns to wild camp and ward off any evil spirits who might be threatened by our monsters. Finally, students devised a short theatre piece to get across their message loud and clear, and made jewellery from trash to sell and raise funds for the project.



An Awen Education. Our students have created a video about an Awen education, and why this is so important to them. You can find this here: <https://www.youtube.com/watch?v=OUaUsF1HaBA>

Organisational achievements

Organisation & Management

- Our new General Manager, John Carden, has helped Awen to mature as an organisation, putting in place appropriate structures, policies, and procedures for an organisation of our size.
- We are an active member of the Phoenix Education Trust’s ‘Learning Communities Alliance’ – a group specifically for people managing settings such as the Awen Project – in order to keep up to date with changes in government guidance and share, discuss, and develop solutions to common challenges.
- Improved impact monitoring through the use of surveys to gather qualitative and quantitative data from our students and their families.
- Recruited a diverse board of trustees, consisting of experts who can provide accountability and support by challenging our strategy, sharing advice and experience, and identifying opportunities.

Educational practices

- We have made significant progress with our educational model, having clarified and refined our educational philosophy into a coherent approach by drawing upon relevant research and outside experts, as well as improving practice as democratic educators through structured training, reflection, and weekly staff supervision. All of this work has been informed by current and emerging research into educational approaches, such as self-directed education.
- We have clearly articulated our offering to students and their families through a defined set of protocols and an overall timetable structure that enables us to put our approach into practice.
- Awen recruited an experienced democratic educator, Phoebe Patience, who has developed an excellent partnership with educator Jonny Field, co-designing each week and supporting learning across the team.

Awen Families

- The “Guardian Gathering” meets every two weeks to provide support to the project and provide voice to our parents and carers. We have made progress with improving the self-sufficiency of this group through identifying specific roles of support, but this remains a focus area for the coming year.
- We provided a six-week online training course to parents and carers on “social pedagogy” to encourage their understanding and use of approaches to home education and parenting that align with the environment within our learning community.
- We are pleased to welcome Nikki Blenman to the trustee board to act as a beneficiary representative.

Fundraising

- The Awen Project secured additional funding to continue the project for the next year from a generous philanthropic donor.
- We have compiled a case for support and agreed on a fundraising strategy. We have completed a number of applications however the (Covid-19) funding environment is very competitive, especially within education which many foundations consider a statutory activity.
- We are working to secure additional funding to support our work for another two years in order to pilot income generating activities and understand the extent to which we might become self-financing.

Impact Report 2021

Students

Since joining Awen, our parents and carers have seen positive impact on their children:

89% said their child was **happier**

78% said their child was **more engaged in learning**

93% said their child was **more collaborative**

Parents and carers described the impact they had seen for their children:

“Awen has helped [my daughter] have a better understanding of democracy through practicing it. It has helped her to listen to other people’s perspectives while growing the confidence to think about and share her own. It has allowed her to be her wild natured, sensory seeking self. Awen is also helping her to understand that learning can happen outside of four walls and it is truly down to her to learn what she wants, when she wants, which is developing her intrinsic motivation and inside out approach to learning.”

“Awen has provided an environment where my son can experiment, discuss, debate and learn without fear of failure. Giving him the power of choice in his education has lessened his stress and allowed him to develop his sense of self.”

“[Our son] has become more creative and enthusiastic about his learning whereas he was very switched off in school and scared of the discipline style and ethos.”

Families

Awen parents and carers also reported positive impacts for themselves:

89% have become **more confident as parents**

79% have a **better relationship with their children**

86% are **more engaged in their children's learning**

"Being part of Awen has made me realise I can be more active in shaping my own life as well as my children's future. I have pushed (and continue to push) my comfort zones in order to grow and develop personally."

"Awen has opened my eyes to a different way of educating our children which involves the whole family and community, through relational connections, creativity and democracy."

(Results from impact survey of parents and carers completed June 2021)

Goals for 2021/22

The overarching aim for next year is to look outward.

We have a clear understanding of our educational approach and are ready to work with others to raise our profile, create a sustainable income stream, and support other communities to get off the ground.

Fundraising

- Our target is to raise £120k – £150k to cover core operating costs for the next two years. In this time, we will establish a set of income streams and develop a regular-giving base. We believe that philanthropic / major donors will offer the best chances of success and enable us to develop a network of partners who support our vision of a new, more human form of education.
- We will pilot ideas for Awen Lite - an offering for children who are educated in mainstream schools - such as after-school and holiday clubs. We hope to understand the level of demand, establish a pricing structure, and iron out any operational difficulties in delivering such a service.
- Improve fundraising infrastructure, in particular the Awen Project's website, mailing list, and social media. Using these tools effectively will enable us to make the most of engagement with like-minded families and supporters to grow our community and raise funds.

Educational practices

- Maintain developmental approaches for staff (such as weekly supervision) that are working well to improve awareness and practice.
- Continue to formalise and document our educational model as we recognise the habits and structures that best support our students to flourish, recognising that the process of reflection and discovery is more important than the outcome and that there is no one-size-fits-all approach.
- Clarify areas of responsibility within the Learning Community (staff / students / families) and, wherever possible, the community should seek self-sufficiency.

Looking outwards

- Bring together like-minded parents and educators and support them to establish an Awen (or Awen-inspired) setting in their local community. Through collaborating with others, we will necessarily take a critical look at our own ways of being and doing at the same time as nurturing a new educational setting.
- Talk about our work, our approach, and why this is an important (and under-valued) educational discussion. Collaborate with other Learning Communities to critique and support each other and develop practice across our wider community.

Financial review

During the current financial period, which is also the first financial period of the Awen Project, the charity achieved a surplus of £32,878 (2020: £24,775), increasing total reserves at year end to £57,653 (2020: £24,775). Income for the period was £80,000 (2020: £166,367) and expenditure was £47,122 (2020: £141,592).

However, within expenditure in the prior period is a one off expenditure item of £64,406 spent on renovating the Annex at the Spinney (see note 5 of the financial statements).

Of the reserves held at year end £57,653 (2020: £24,775) were unrestricted in nature.

Reserves policy

The trustees are currently in the process of putting together a formal reserves policy, however the current reserves of £57,653 (2020: £24,775) are deemed sufficient for the stage at which the Charity currently is and the current financial obligations of the organisation.



Structure, governance and management

Governing document

The Charity was registered on 12 November 2019 as a charitable incorporated organisation (CIO) governed by its constitution and whose only voting members are the Trustees.

Recruitment and appointment of Trustees

Trustees are elected onto the Board through nomination by the current Trustee Board. New Trustees are provided with an induction by the current members.

Under the governing document, the number of Trustees shall not be less than three with no maximum number. A quorum is formed when one half of the Trustees are present or three, whichever is the greater number. All decisions are made by the Trustees.

Risk management

The trustees review, on an annual basis, the major risks which the charity faces to ensure that it has sufficient resources in the event of adverse conditions. The trustees have examined the operational and business risks which the charity faces and confirm that they are satisfied that systems and controls are established over key financial systems to mitigate any significant risks.

The main risks facing the Charity are as follows:

Education Outcomes, Legislation, and Compliance

Working with young people is a privilege that comes with significant responsibility. In promoting an alternative approach to mainstream education, we must not assume that because we have positive intent that this will automatically yield positive results for the young people in our care.

To ensure the well-being and development of our young people:

- We work with experts to inform our approach and ensure we are guided by research and the experience of more established democratic schools;
- Students participate in weekly coaching sessions to discuss their aims, progress, and any challenges they may currently be facing;
- Students complete regular self-assessments to understand how they are developing across



a range of holistic measures (a broader set of measures than mainstream schools, that includes academic outcomes);

- We engage our parents / carers as partners in their children's education, which necessitates far better, deeper, and more frequent dialogue than would be normal for a mainstream setting;
- Most importantly, we listen to our young people: they are in charge of their own learning, with choice and real power over what they do and how their community is run.

There are many laws and regulations that govern the education and care of young people. We currently operate as a learning community of Elective Home Educated children and our provision is for fewer than 17 hours per week / 50% of a standard school week.

Financial sustainability

We are a young organisation and have not yet established reliable income sources with which to sustain ourselves over the longer term. To address this we are engaging with potential donors to provide further funding, with support from experienced fundraisers. Covid-19 has materially affected trusts and foundations resulting in a more challenging funding environment, especially for less well established charities like us.

There are opportunities for us to create reliable income streams by expanding our offering to include mainstream educated children and teachers, and we plan to launch pilot programmes over the next 12 months to test the market.

Health and safety

As our community is based primarily in the forest, there are many risks we need to be aware of and these change over time, for example trees may fall down after a storm and high winds make the site unsafe. In addition to basic safety checks and policies, our students perform regular site audits. We have appropriate insurance in place for an education setting, including public liability insurance.

Legal and administrative information

Charity name

The Awen Project

Charity registration no.

1186305

Company registration no.

CE019562

Registered office

The Spinney
Twyncyn
Dinas Powys
CF64 4AS

Trustees

Charlotte Church	Chair	appointed 21 April 2021
Hannah Fitt	Vice-Chair	appointed 10 May 2021
Sean Bellamy		appointed 12 May 2021
Nicola Blenman		appointed 14 June 2021
John Farrell		resigned 10 May 2021
Jonathan Powell		resigned 21 April 2021
Kevin Rahman-Daultrey		appointed 10 May 2021
Stella Smith		

Independent examiner

Andy Nash Accounting & Consultancy Ltd
Units 24 & 25
Goodsheds Container Village
Hood Road
Barry
CF62 5QU

Charity number 1186305

Trustee spotlight: Hannah Fitt

Hannah Fitt is a Charity Director, Public Speaker, Life Coach, Musician and Screenwriter as well as mama to two incredible small people, Matilda and Stan.

Hannah co-founded The SAFE Foundation, an international sustainable development charity, which she set up with her Identical Twin Sister in 2006. Through SAFE Hannah has been able to reach over 10,000 people across Africa and Asia and help them access vital health, education and skills resources to lift communities out of poverty.

Hannah is also the Director of Programs and Operations at Keep A Child Alive, the international charity of Grammy award winning artists and activist, Alicia Keys - dedicated to providing health, education and support services to children who have been left behind all over the world.



What was it that attracted you to the Awen Project?

I have never taken for granted what a great education can do. Working all over the world with children who just don't get the opportunity to access education has instilled in me a sense of responsibility - we owe it to our children to get this right. And it cemented my personal philosophy: If we can, we should.

At the SAFE foundation, when talking about global issues, we were often met with the same attitudes - "why does it matter to us?; charity begins at home; I bet our money doesn't even get to these places".

Instead of pushing harder we started asking ourselves - how can we challenge this stigma and misconception about charity and particularly international charity? We knew critical thinking and global education was pivotal in this plight against this misinformation - that was readily available in schools. But what about the children who didn't learn well in that environment? What about the kids who weren't in that mainstream school setting? How could they access this information in a truly meaningful way? So, we developed a global citizenship education program for children not in 'mainstream' or who had different learning needs.

We spent a lot of time researching and developing comprehensive modules of learning on things like cultural sensitivity, sustainability, stigmas and judgements, and a load more - and we were able to produce some great immersive and exciting tools to deliver these - we made our own Virtual Reality experience for example.

What we found was when kids feel confident, they learn and they retain that learning too. Helping them feel like they belong, like they had agency over their decisions and choices was critical. It actually was an incredibly powerful experience to hold space and time and energy with kids that had been written off - and see their true authentic attitudes to things like race, gender, politics and the world we live in.

So when Charlotte started to talk to me about The Awen Project and her hopes and dreams for education, it certainly ignited a spark in me. The philosophy and values of the project matter - and the children, parents, educators, trustees - everyone involved is passionate about making a real lasting difference to an education system that, simply put, doesn't cater for all children.

I hope to contribute my experience of the charity sector and working with young people to help the Awen Project build something really special that can be an example far and wide for an inclusive and accessible education system.

Hannah Fitt

HANNAH FITT

TRUSTEE

Statement of Board of Trustees' responsibilities

The Trustees are responsible for preparing the Trustees' Annual Report and the financial statements in accordance with applicable law and regulations.

Charity law requires the Trustees to prepare financial statements for each financial year. Under that law they are required to prepare the financial statements in accordance with UK Accounting Standards and applicable law (UK Generally Accepted Accounting Practice), including FRS 102 The Financial Reporting Standard applicable in the UK and Republic of Ireland.

Under charity law the Trustees must not approve the financial statements unless they are satisfied that they give a 'true and fair' view of the state of affairs of the Charity and of the excess of income over expenditure for that period. In preparing these financial statements, the Trustees are required to:

- select suitable accounting policies and then apply them consistently;
- make judgements and estimates that are reasonable and prudent;
- state whether applicable UK Accounting Standards have been followed, subject to any material departures disclosed and explained in the financial statements; and,
- prepare the financial statements on the going concern basis unless it is inappropriate to presume that the Charity will continue its activities.

The Trustees are responsible for keeping adequate accounting records that are sufficient to show and explain the Charity's transactions and disclose with reasonable accuracy at any time the financial position of the Charity and enable them to ensure that the financial statements comply with the Charities Act 2011. They have general responsibility for taking such steps as are reasonably open to them to safeguard the assets of the Charity and to prevent and detect fraud and other irregularities.

The Trustees are responsible for the maintenance and integrity of the corporate and financial information included on the Charity's website.

Legislation in the UK governing the preparation and dissemination of financial statements may differ from legislation in other jurisdictions. In addition, the Trustees confirm that they are happy that the content of the Annual Review in pages 5-13 meet the requirements of the Trustees' Annual Report under charity law.

They also confirm that the financial statements have been prepared in accordance with the accounting policies set out in the notes to the accounts and comply with the Charity's governing document, the Charities Act 2011 and Accounting and Reporting by Charities: Statement of Recommended Practice applicable to charities preparing their accounts in accordance with FRS 102, The Financial Reporting Standard applicable in the UK and Republic of Ireland published on 16 July 2014.

This report was approved and authorised for issue by the Board of Trustees on 13 June 2022 and signed on its behalf by:



CHARLOTTE CHURCH

FOUNDER AND CHAIR OF TRUSTEES

Independent examiner's report

I report to the trustees on my examination of the accounts of The Awen Project (charity number 1186305) for the year ended 31 August 2021 set out on pages 15 to 24.

Respective responsibilities of trustees and examiner

The CIO's trustees are responsible for the preparation of the accounts in accordance with the requirements of the Charities Act 2011 (the Charities Act). The CIO's trustees consider that an audit is not required for this year under section 144 of the Charities Act and that an independent examination is needed.

It is my responsibility to:

- examine the accounts under section 145 of the Charities Act;
- to follow the procedures laid down in the general Directions given by the Charity Commission under section 145(5)(b) of the Charities Act; and,
- to state whether particular matters have come to my attention.

This report, including my statement, has been prepared for and only for the CIO's trustees as a body. My work has been undertaken so that I might state to the CIO's trustees those matters I am required to state to them in an independent examiner's report and for no other purpose. To the fullest extent permitted by law, I do not accept or assume responsibility to anyone other than the CIO and the CIO's trustees as a body for my examination work, for this report, or for the statements I have made.

Basis of independent examiner's statement

My examination was carried out in accordance with general directions given by the Charity Commission. An examination includes a review of the accounting records kept by the CIO and a comparison of the accounts presented with those records. It also includes consideration of any unusual items or disclosures in the accounts, and seeking explanations from the trustees concerning any such matters.

The procedures undertaken do not provide all the evidence that would be required in an audit, and consequently no opinion is given as to whether the accounts present a 'true and fair' view and the report is limited to those matters set out in the statement below.

Independent examiner's statement

I have completed my examination. I confirm that no material matters have come to my attention in connection with the examination giving me cause to believe that in any material respect:

- accounting records were not kept in respect of the CIO as required by section 130 of the Act; or
- the accounts do not accord with those records; or
- the accounts do not comply with the applicable requirements concerning the form and content of accounts set out in the Charities (Accounts and Reports) Regulations 2008 other than any requirement that the accounts give a 'true and fair' view which is not a matter considered as part of an independent examination.

I have no concerns and have come across no other matters in connection with the examination to which attention should be drawn in this report in order to enable a proper understanding of the accounts to be reached.



ANDREW PHILIP NASH ACA

MEMBER OF THE INSTITUTE OF CHARTERED ACCOUNTANTS IN ENGLAND AND WALES – 2461833

DATED: 13 JUNE 2022

Andy Nash Accounting & Consultancy Ltd
Units 24 & 25
Goodsheds Container Village
Hood Road
Barry
CF62 5QU



an Andy Nash
Accounting &
Consultancy

Statement of financial activities

For the year ended 31 August 2021

		Unrestricted	Restricted	Total	Total
		Funds	Funds	Funds	Funds
		Year ended	Year ended	Year ended	Year ended
		31 Aug 2021	31 Aug 2021	31 Aug 2021	31 Aug 2020
	Notes	£	£	£	£
Income from:					
Donations and legacies	3	80,000	-	80,000	166,000
Charitable activities	4	-	-	-	367
Total income		80,000	-	80,000	166,367
Expenditure on:					
Raising funds	5	2,297	-	2,297	-
Charitable activities	5	44,825	-	44,825	141,592
Total expenditure		47,122	-	47,122	141,592
Net income/(expenditure)		32,878	-	32,878	24,775
Reconciliation of funds:					
Balance brought forward	9 & 10	24,775	-	24,775	-
Balance carried forward	9 & 10	57,653	-	57,653	24,775

The notes on pages 17 to 24 form part of the financial statements.

All the above results arise from continuing activities.

There were no other recognised gains or losses other than those stated above.

Balance sheet

As at 31 August 2021

	Notes	Total Funds 31 Aug 2021		Total Funds 31 Aug 2020
		£		£
Fixed assets				
Tangible fixed assets	6	7,394		-
Current assets				
Debtors	7	163	154	
Cash at bank and in hand		53,986	25,701	
Total current assets		54,149	25,855	
Creditors -				
amounts falling due within one year	8	(3,890)	(1,080)	
Net current assets		50,259		24,775
Net assets		57,653		24,775
Funds of the charity:				
Unrestricted funds				
General funds	9 & 10	57,653	24,775	
Total funds		57,653		24,775

The notes on pages 17 to 24 form part of the financial statements.

All the above results arise from continuing activities.

There were no other recognised gains or losses other than those stated above.

These financial statements were approved and authorised for issue by the Board of Trustees on 13 June 202 and signed on their behalf by:



CHARLOTTE CHURCH

FOUNDER AND CHAIR OF TRUSTEES

Notes to the financial statements

1. Accounting policies

Basis of preparation of the financial statements

The financial statements have been prepared in accordance with 'Charities SORP (FRS 102) - Accounting and Reporting by Charities: Statement of Recommended Practice applicable to charities preparing their accounts in accordance with the Financial Reporting Standard applicable in the UK and Republic of Ireland (FRS 102) second edition (effective 1 January 2019)', the Financial Reporting Standard applicable in the UK and Republic of Ireland (FRS 102), including Update Bulletin 1, and relevant charities law.

The effect of any event relating to the period ended 31 August 2021, which occurred before the date of approval of the financial statements by the Board of Trustees has been included in the financial statements to the extent required to show a true and fair view of the state of affairs at 31 August 2021 and the results for the year ended on that date.

The functional currency of the Charity is sterling and amounts in the financial statements are rounded to the nearest pound.

Using the exemption available to smaller charities the Board of Trustees has chosen not to include a Statement of Cash Flows within the financial statements.

Legal status

The Awen Project is a charitable incorporated organisation registered in England & Wales, and meets the definition of a public benefit entity. The registered office is The Spinney, Twyncyn, Dinas Powys, CF64 4AS.

Going concern

The Trustees have assessed whether the use of the going concern basis is appropriate and have considered possible events or conditions that might cast significant doubt on the ability of the Charity to continue as a going concern. The Trustees have made this assessment for a period of at least one year from the date of approval of the financial statements.

The Trustees have considered the Charity's forecasts and projections and have taken account of pressures on income. After making enquiries, the Trustees confirm that the Charity has adequate resources to continue in operational existence for the foreseeable future and that there are no material uncertainties that would impact this assessment. The ongoing COVID-19 pandemic has had no material impact on this assessment. The Charity therefore has adopted the going concern basis in preparing its financial statements.

Fund Accounting

General funds are unrestricted funds which are available for use at the discretion of the Trustees in furtherance of the general objectives of the Charity and which have not been designated for other purposes.

Restricted funds are funds that are to be used in accordance with specific restrictions imposed by donors or that have been raised by the Charity for particular purposes. The cost of raising and administering such funds are charged against the specific fund. There are currently no restricted funds within the Charity.

Income

All income is included in the Statement of Financial Activities when the Charity has entitlement, there is probability of receipt and the amount is measurable.

For donations and gifts this is when they are received. Gift Aid is recognised on a receivable basis as part of the income to which it relates.

Income from charitable activities and grants is credited to the Statement of Financial Activities when received or receivable whichever is earlier, unless it relates to a specific future period or event, in which case it is deferred.

Expenditure and irrecoverable VAT

Expenditure is accounted for on an accruals basis and liabilities are recognised as expenditure when there is a legal obligation committing the Charity to the expenditure, it is probable that settlement will be made, and the obligation can be measured.

Non-recoverable VAT is included against the expenditure heading to which it relates.

Indirect costs, including governance costs, which cannot be directly attributed to activities, are allocated between activities proportionate to the direct costs incurred in those activities.

Taxation

As a registered charity income and gains are exempt from Corporation Tax to the extent that they are applied to the charitable objectives.

Tangible fixed assets and depreciation

Tangible fixed assets are stated at cost less accumulated depreciation and any impairment losses, with individual assets over £500 being capitalised. Depreciation is provided for at a rate to ensure the items are written down over their useful economic life as follows:

- Container - 3 years
- Computer equipment - 3 years

Cash at bank and in hand

Cash at bank and in hand includes cash in hand, deposits with banks and funds that are readily convertible into cash at, or close to, their carrying values, but are not held for investment purposes.

Debtors

Trade and other debtors are recognised at the settlement amount after any trade discount is applied.

Creditors

Creditors are recognised where the Charity has a present obligation resulting from a past event that will probably result in the transfer of funds to a third party, and the amount due to settle the obligation can be measured or estimated reliably.

Financial instruments

Basic financial instruments are measured at amortised cost other than investments which are measured at fair value.

Critical estimates and judgements

In preparing financial statements it is necessary to make certain judgements, estimates and assumptions that affect the amounts recognised in the financial statements. The treatment of tangible fixed assets is sensitive to changes in useful economic lives and residual values of assets. These are reassessed annually.

In the view of the Trustees in applying the accounting policies adopted, no judgements were required that have a significant effect on the amounts recognised in the financial statements nor do any estimates or assumptions made carry a significant risk of material adjustment in the next financial year.

2. Comparative statement of financial activities

		Unrestricted Funds Year ended 31 Aug 2020	Restricted Funds Year ended 31 Aug 2020	Total Funds Year ended 31 Aug 2020
	Notes	£	£	£
Income from:				
Donations and legacies	3	166,000	-	166,000
Charitable activities	4	367	-	367
Total income		166,367	-	166,367
Expenditure on:				
Raising funds	5	-	-	-
Charitable activities	5	141,592	-	141,592
Total expenditure		141,592	-	141,592
Net income/(expenditure)		24,775	-	24,775
Reconciliation of funds:				
Balance brought forward	9 & 10	-	-	-
Balance carried forward	9 & 10	24,775	-	24,775

3. Income from donations and legacies

	Unrestricted Funds Year ended 31 Aug 2021	Restricted Funds Year ended 31 Aug 2021	Total Funds Year ended 31 Aug 2021
	£	£	£
Donations	80,000	-	80,000
Total income from donations and legacies	80,000	-	80,000

	Unrestricted Funds Year ended 31 Aug 2020	Restricted Funds Year ended 31 Aug 2020	Total Funds Year ended 31 Aug 2020
	£	£	£
Donations	166,000	-	166,000
Total income from donations and legacies	166,000	-	166,000

4. Income from charitable activities

	Unrestricted Funds Year ended 31 Aug 2021	Restricted Funds Year ended 31 Aug 2021	Total Funds Year ended 31 Aug 2021
	£	£	£
Contributions for activities	-	-	-
Total income from charitable activities	-	-	-

	Unrestricted Funds Year ended 31 Aug 2020	Restricted Funds Year ended 31 Aug 2020	Total Funds Year ended 31 Aug 2020
	£	£	£
Contributions for activities	367	-	367
Total income from charitable activities	367	-	367

5. Total expenditure

	Direct costs Year ended 31 Aug 2021	Indirect costs Year ended 31 Aug 2021	Total Funds Year ended 31 Aug 2021
	£	£	£
Raising funds	2,000	297	2,297
Charitable activity	39,034	5,791	44,825
Total expenditure	41,034	6,088	47,122

	Direct costs Year ended 31 Aug 2020	Indirect costs Year ended 31 Aug 2020	Total Funds Year ended 31 Aug 2020
	£	£	£
Raising funds	-	-	-
Charitable activity	136,121	5,471	141,592
Total expenditure	136,121	5,471	141,592

Direct expenditure on raising funds includes the following items:

	Total Funds Year ended 31 Aug 2021	Total Funds Year ended 31 Aug 2020
	£	£
Fundraising consultancy support	2,000	-
Total direct expenditure on raising funds	2,000	-

Direct expenditure on charitable activities includes the following items:

	Total Funds Year ended 31 Aug 2021 £	Total Funds Year ended 31 Aug 2020 £
Educationalists and other consultants	33,787	57,972
Refurbishment of the Annex at the Spinney	-	64,406
Other direct expenditure	5,247	13,743
Total direct expenditure on charitable activities	39,034	136,121

During the prior financial period £64,406 was spent on refurbishing the Annex at the Spinney which is also the residential address for Charlotte Church and Jonathan Powell, who at the time were both trustees of The Awen Project. The expenditure included construction costs as well as consultancy and planning fees to enable an area separate from the main portion of the property, that had previously been utilised as a studio, to be altered to allow it to be used for educational activities for a temporary period up to 30 July 2020. The work carried out including installing toilets suitable for pupils, as well as amending access to the building. This was deemed to be a suitable temporary location for the activities of the charity whilst more permanent options were explored. Expenditure on provision of educational facilities is in line with the charitable objects of The Awen Project. The work brings no financial benefit to the two trustees as the space would need significant work before it could be used for residential purposes.

This expenditure has not been capitalised in the accounts as, in line with the planning permission granted by the Vale of Glamorgan Council, this area is no longer being utilised for this purpose.

In addition, the expenditure incurred on this refurbishment was more than covered by unrestricted donations into the Charity by trustees (see note 12) and so no publicly raised funds were spent on this, and no gift aid has been claimed on those donations.

Indirect costs includes the following items:

	Total Funds Year ended 31 Aug 2021 £	Total Funds Year ended 31 Aug 2020 £
Administration and other costs	3,408	2,827
Governance	2,680	2,644
Total indirect expenditure	6,088	5,471

Governance costs includes the following items:

	Total Funds Year ended 31 Aug 2021 £	Total Funds Year ended 31 Aug 2020 £
Insurance expense	1,600	1,564
Independent examination	1,080	1,080
Total expenditure on governance	2,680	2,644

6. Tangible fixed assets

	Container	Computer	Total
	£	equipment	£
		£	£
Cost			
As at 1 September 2020	-	-	-
Additions in year	8,380	1,499	9,879
As at 31 August 2021	8,380	1,499	9,879
Accumulated depreciation			
As at 1 September 2020	-	-	-
Charge in year	2,258	227	2,485
As at 31 August 2021	2,258	227	2,485
Net book value			
As at 1 September 2020	-	-	-
As at 31 August 2021	6,122	1,272	7,394

7. Debtors

	Total	Total
	31 Aug 2021	31 Aug 2020
	£	£
Prepayments	163	154
Total debtors	163	154

8. Creditors - amounts falling due within one year

	Total	Total
	31 Aug 2021	31 Aug 2020
	£	£
Accruals	3,890	1,080
Total creditors - amounts due within one year	3,890	1,080

9. Analysis of charity funds

	Balance brought forward Year ended 31 Aug 2021	Income in period Year ended 31 Aug 2021	Expenditure in period Year ended 31 Aug 2021	Balance carried forward Year ended 31 Aug 2021
	£	£	£	£
Unrestricted funds	24,775	80,000	(47,122)	57,653
Total charity funds	24,775	80,000	(47,122)	57,653

	Balance brought forward Year ended 31 Aug 2020	Income in period Year ended 31 Aug 2020	Expenditure in period Year ended 31 Aug 2020	Balance carried forward Year ended 31 Aug 2020
	£	£	£	£
Unrestricted funds	-	166,367	(141,592)	24,775
Total charity funds	-	166,367	(141,592)	24,775

10. Analysis of net assets

	Unrestricted Funds 31 Aug 2021	Restricted Funds 31 Aug 2021	Total Funds 31 Aug 2021
	£	£	£
Fixed assets	7,394	-	7,394
Current assets	54,149	-	54,149
Current liabilities	(3,890)	-	(3,890)
Total charity funds	50,259	-	50,259

	Unrestricted Funds 31 Aug 2020	Restricted Funds 31 Aug 2020	Total Funds 31 Aug 2020
	£	£	£
Current assets	25,855	-	25,855
Current liabilities	(1,080)	-	(1,080)
Total charity funds	24,775	-	24,775

11. Trustee remuneration

During the year, no Trustee received any remuneration (2020: £Nil). No members of the Board of Trustees received reimbursement of expenses related to attendance at Trustee meetings (2020: £Nil).

12. Related party transactions

During the current year, Jonathan Powell, who was formerly a trustee and is spouse of Charlotte Church, Chair of the Board of Trustees was remunerated a total of £2,810 for his role as a educational consultant after resigning as a trustee. This is permitted under the consitution and Charlotte was not involved in the decision making process nor the discussions around remuneration. His remuneration was at the same rate as other consultants, all of whom are paid below market rates.

There were no related party transactions during the prior period other than the expenditure on the refurbishment of the Annex at The Spinney noted within note 5 above.

Total unrestricted donations from trustees amounted to £Nil (2020: £166,000) in the period.

13. Guarantees and secured charges

As at 31 August 2021 the Charity did not have any outstanding guarantees to third parties nor any debts secured against assets of the Charity (2020: £Nil).

THE AWEN PROJECT

England & Wales - Charity number 1186305

Accounts



THE **AWEN PROJECT**

Trustees Annual Report and Financial Statements 2019/2020

“I love going to school now. I think I have become more confident and my social skills have improved when meeting new people. I feel I can have the freedom to get creative and learn in the ways that I like.

I found mainstream school difficult and frustrating.”

(Awen Student, aged 13)



Contents

An introduction to Awen	4
Trustees annual report	5
Objectives	5
Activities	5
What does an Awen education look like?	6
Achievements and performance	7
Goals for 2020/21	8
Financial review	9
Structure, governance and management	9
Legal and administrative information	10
Statement of Board of Trustees' responsibilities	12
Independent examiner's report	13
Statement of financial activities	14
Balance sheet	15
Notes to the financial statements	16

An introduction to Awen

Like all parents, I want to make the best choices for my children. I don't want to choose a school for them where they will be lost amongst the crowd, or forcibly moulded into a shape I don't recognise. I don't want them to be part of an institution only wealthy people can access, or a school that views good GCSE results as their most important mission.

I want them to go to a place where firstly they are allowed to be themselves, but secondly they are required to be an active member of a community. I want them to have access to the tools they need to become healthy, informed and responsible members of a global society in a future that is going to require great things from them. I want them to go to a school where the teachers feel valued and are allowed to express their own superpowers, and are not oppressed by a system that only sees children as data.

That's why I set up The Awen Project.

At the Awen Project we have this mission: to create a model of education that's sustainable, adaptable, and personalised. We believe that this education should be free and accessible. That is why the learning communities that The Awen Project creates are able to be replicated around the world, not for our profit but for the profit of future generations.

Over the last three years I've spoken to thousands of practitioners in education, visited schools all over the country from a social emotional mental health school in Barnsley to Eton College, and completed what must be a PhD's worth of research into education and child development. Armed with that knowledge and with the DIY attitude of a garage punk band, my husband and I set about dragging a school into existence: writing curricula and policies, engaging educators and parents, liaising with ESTYN (the Welsh equivalent of Ofsted) and county council planners, and we finally registered The Awen Project as a school in December 2019 for 20 students aged 9-14.

Free to attend (with the pledge of 4 hrs per month of parental volunteer time), co-created with the students and their families, entrepreneurial and driven by necessity, run by a participatory democracy, and with a passion-based curriculum focussed on relationships to the self, community, and planet. It almost killed us but we opened with enormous optimism. Our first collaborative project was the interior design of our building, turning a blank space into our home, adhering to a list of co-written "scavenger" rules to assure sustainability. It is fair to say that our first 18 months have been hard, not least because of the coronavirus pandemic, but we have learnt such a lot about what works for our students, our families, and our educators. Perhaps more importantly we have discovered what does not work for us as well.

As we look to the year ahead, our priorities are to:

- Adapt to the global pandemic by moving into the forest as a learning community and exploring how we work effectively online, all the while developing our expertise as democratic educators;
- Recruit a General Manager with the skills and experience to help us mature as an organisation and lay strong foundations for the future;
- Refine our model and create a blueprint so other communities might join us and help gather evidence to promote change within the UK education system.

Across the UK, parents are seeing first hand the harms inflicted on their children by our out-dated, ineffective, and inhumane education system. The coronavirus pandemic and resulting school closures have exacerbated this further. Now, more than ever, is the time to reinvent our education system and make it fit for the future.

Charlotte Church

FOUNDER AND CHAIR OF TRUSTEES

THE AWEN PROJECT

Trustees annual report

The Board of Trustees, submit their annual report and the financial statements of The Awen Project for the period ended 31 August 2020.

The Board of Trustees confirms that the annual report and financial statements of the Charity comply with current statutory requirements, including the Charity Act 2011, as well as the requirements of the Charity's governing document and the provisions of the 'Charities SORP (FRS 102) - Accounting and Reporting by Charities: Statement of Recommended Practice applicable to charities preparing their accounts in accordance with the Financial Reporting Standard applicable in the UK and Republic of Ireland (FRS 102) second edition (effective 1 January 2019)', the Financial Reporting Standard applicable in the UK and Republic of Ireland (FRS 102).



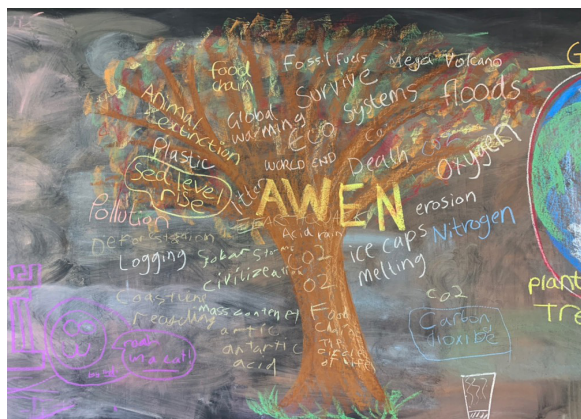
Objectives

The Awen Project is a Charitable Incorporated Organisation (CIO), registered with the Charity Commission for England and Wales (Charity number: 1186305).

The objects of The Awen Project are to advance education for the public benefit by the establishment of, or assisting in the establishment of, schools that are governed by participatory democracy.

Our aim is to pioneer a new model for education that is democratic, free-to-attend, and human-centred. We empower young people as participants within a learning community by providing conditions supportive of learning (rather than teaching) and supporting families to facilitate their children's education.

The Trustees have referred to the Charity Commission's guidance on public benefit when reviewing the Charity's objectives and activities.



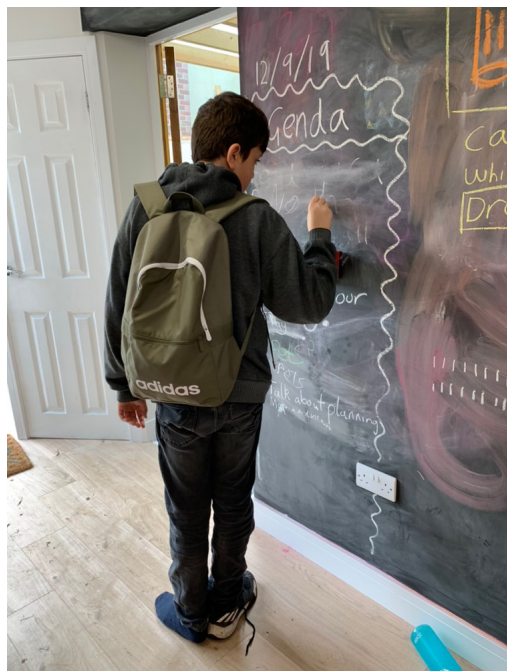
Activities

The Awen Project is pioneering a human-centred model for education where children are valued as people in their own right who are allowed to be themselves as active participants in a community. We support them to become healthy, informed, and responsible members of a global society. Today we are running a learning community based in Dinas Powys, South Wales, developing our expertise and approach in partnership with leading experts in education and human development. We plan to extend our impact on the education system through building our home community and welcoming more students and families, piloting our Awen Lite programme that welcomes mainstream educated children and is a potential revenue stream to support the project, and offering training to teachers and education practitioners.

Our vision is to co-create a network of learning communities throughout the world where every human is valued. An Awen education empowers at all levels by training and supporting parents and carers to be present in their children's education, bringing meaning and purpose to everyone in the community. Our team of creative facilitators are developing a relationship-based pedagogy that will form the basis of a new model for education – to replicate around the world, not for our profit but for the profit of future generations.

To realise our vision we plan to:

- continue the ongoing operation of our home learning community in Dinas Powys, directly benefiting the diverse community of people we work with and enabling us to expand our impact through additional projects and opportunities;
- develop expertise in relational pedagogy which is uncommon in the UK education context so that we can benefit others (parents / wider education sector) through support and training, and;
- create a blueprint of our model so other communities can join us and gather evidence to promote change within the UK education system.



What does an Awen education look like?

Democratic

Governed by participatory democracy, where each member of the school (students and staff) have an equal vote in all decisions over their rules and governance. The only things that can overrule the democracy of each school are, by necessity, the school's safeguarding policy and the law of the land. Committees to deal with specific issues may be formed but they must be transparent and answerable to the school's democracy.

At the heart of the Awen School is the Gathering, a weekly democratic meeting where items that have been put on an agenda are discussed. All decisions upon the running of the school and its rules are decided upon by a majority vote at this meeting. Any member of the school can put an item on the agenda and every vote is equal. The Gathering is chaired by one of the students (everyone has an opportunity to chair) and the subjects raised can range from the serious and consequential, to the abstractly philosophical, and on occasion the utterly daft.

Creative

Deeply innovative, open minded and keen to explore diverse practises in all fields (not just the arts). Staff and students are always looking to improve the ways they produce. A creative environment is one that understands that the process of learning and producing is just as important, if not more, than the outcome or end product.

Entrepreneurial

Bold and enterprising, accepting of risk, tolerant of failure, and prepared to interact creatively with the real-life world of business. In order to be self-funding each school by necessity must help the students to have a pioneering attitude to the creation of businesses.

Small

In accordance with Dunbar's number (the cognitive limit to the number of people with whom one can maintain stable social relationships) schools at their maximum should be around 150 people. Remaining small allows a school to be adaptable.

Relationship-centred

Ensuring that the people within the school know and understand each other as a community, and that members of the school community are treated with respect and equity.

Free-to-attend

Never asking parents or carers to pay fees. Whilst schools will require able parents and carers to volunteer an average of 4 hours a month in-line with their own profession and skills, Awen schools are not fee-paying as it is our belief that a parent's personal finances should never preclude a child from accessing a good education.

Excellent

Encouraging and expectant of great personal achievements, whether they be in academics, arts and performance, sports, or more individual passion-led activities.

Project Based Learning

Our curriculum does not separate subjects as a traditional school would. Instead we look to the children's passions and surroundings to help them develop projects through which they learn all the things that a subjects-based curriculum could cover.



On their very first day of term our first intake of children walked into an empty space: two rooms with no furniture and white walls. They quickly identified that if these rooms were to become a functional working space they would have to be radically altered. Working with visiting professionals in interior design and the arts, and with constant reference to a sustainability focussed “scavenger list” that the children wrote, they workshopped concepts, assessed each other’s ideas, and subsequently transformed their school into a vibrant colourful multi-functional space for learning and socialising, lunchtime and playtime, and which they have the utmost care for.

Achievements and performance

The last year has been a whirlwind. Our students, families, and staff have grown as a community and shown the joy and abundance of opportunity that can arise from a democratic approach to education. Students have filmed YouTube videos, contributed to the school’s debate club, cooked food for their peers and teachers, practised Brazilian Jiu Jitsu, and worked with visiting charity workers, neuroscientists, animators, film-makers, music producers, and farmers. Their sense of achievement and pride in their work was huge and required no marking or critical assessment on the part of the teachers.

Project highlights

In December 2019, the children each exhibited a personal art project in a public gallery in Cardi and ran a stall at the Cardi Maker’s Market selling their hand-made goods. In January 2020 they built computers from parts, and by February they had written a children’s picture book and researched how to publish it. In the summer they co-constructed a theatre piece with the help of professional writers, directors, actors, set and costume designers, technical engineers and composers.



“The ‘I’ in Us” public exhibition, made up of individually conceived art pieces made by students and exhibited in the Chapter Arts centre, celebrated the view of the individual within a community. Students created short films, comic books, mixed material sculptures of cast-iron, paper, and wicker, works on canvas, clay animation, and a hand-stitched kimono. We were really getting into our stride and could see how well our students were thriving in the Awen environment.

Climate Strike! Inspired by Greta Thunberg and David Attenborough, our students completed research into why the climate strikes were taking place and what activists were hoping to achieve. After discussions in The Gathering, Awen students decided to spend a day joining the protests in London, and spent time preparing and putting their creative flair into action by making placards and protest signs.

Learning through lockdown

COVID-19 changed everything. We lost the use of our premises, we lost our funding opportunities, we couldn’t afford to keep our staff, and the future looked very uncertain. The transition

online was a challenge, but we found ways to make this work by listening to our students and their families, making space for community wherever we could.

“The first lockdown we used zoom which was good, and we did a Personal Passion Project making our own exhibition at home. That brought many opportunities, for example, I made 3 small clay models of prehistoric animals and a powerpoint with factfiles.”

Democratic, community education

This unexpected interruption gave us space to reflect on our approach so far and there are three lessons we have taken from our first year:

1. Parents must always be partners; becoming a ‘school’ inhibits this. The engagement of our parents, carers, and families is central to the educational environment we are trying to create and the operation of a low cost, free-to-attend learning community. Becoming a school came with inbuilt assumptions that are hard to move past, prohibitively higher costs, and also pushed our parents away - we lost community cohesion. Meaningful education partnership necessarily depends on the continued contribution of parents as co-educators.
2. Democratic education needs non-traditional teachers. Teacher training in the UK prepares educators for life within a culture that is hierarchical, teacher-led, and where students have little or no autonomy. Specialist recruitment, training, and on-going supervision is essential to ensuring new staff can hold the democratic space that is necessary for students to thrive in a democratic environment.

3. Freedom rooted in community protects against individualism. Democratic education gives students freedom to act, and we noticed that sometimes this freedom manifests as selfish, individualistic acts which was at odds with our intentions. To balance the freedom of the individual with the freedom of the community, we actively promote the concept of “us” and pay attention to the collective impact of our actions and words.

Awen in the Forest

Looking to September, we have formed a partnership with the Woodland Trust, licensing an area of local woodland in which we will base an open-air school so we can provide a Covid-safe educational environment. We are excited about this partnership that could be important to our model going forwards.



Goals for 2020/21

The overarching aim for next year is to lay the foundations that will enable the Awen Project to mature from an energetic and experimental startup to a sustainable organisation, capable of achieving its ambitious aims.

This will require growth across all aspects of our work, and our goals for next year are as follows:

Organisation & Management

- Recruit a General Manager with the skills and experience to help us mature as an organisation by putting in place appropriate structures, policies, and procedures and taking on responsibility for the day to day management of the Awen Project.
- Expand our board of trustees to include relevant experts who can provide accountability and support by challenging our strategy, sharing advice and experience, and identifying opportunities for impact.
- Improve our impact monitoring by identifying the key metrics that will enable us to understand our impact and improve how we work as a team.

Educational practices

- Adapt to the global pandemic by moving into the forest as a learning community and exploring how we work effectively online, all the while developing our expertise as democratic educators.
- Recruit an experienced democratic educator to build our team and develop our experience through intentional development practices (e.g. supervision).
- Clarify and refine our educational philosophy by drawing upon relevant research and outside experience, so we develop a consistent and coherent model of education that unites theory and practice.
- Define a set of protocols and an overall timetable structure that enables us to put our approach into practice.

Financial review

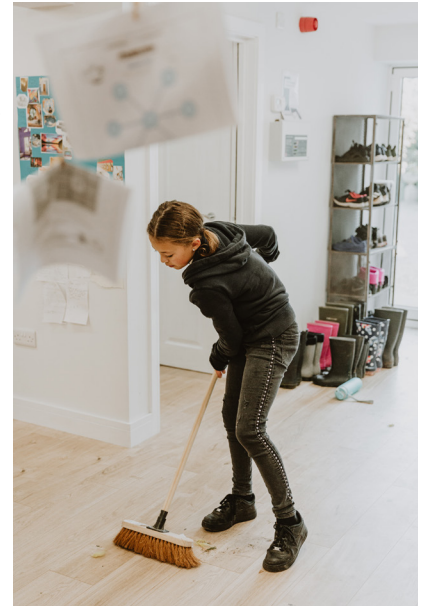
During the current financial period, which is also the first financial period of the Awen Project, the charity achieved a surplus of £24,775, increasing total reserves at year end to £24,775. Income for the period was £166,367, almost entirely made up of donations, and expenditure was £141,592.

However, within expenditure in the period is a one off expenditure item of £64,406 spent on renovating the Annex at the Spinney (see note 4 of the financial statements).

Of the reserves held at year end £24,775 were unrestricted in nature.

Reserves policy

The trustees are currently in the process of putting together a formal reserves policy, however the current reserves of £24,775 are deemed sufficient for the stage at which the Charity currently is and the current financial obligations of the organisation.



Structure, governance and management

Governing document

The Charity was registered on 12 November 2019 as a charitable incorporated organisation (CIO) governed by its constitution and whose only voting members are the Trustees.

Recruitment and appointment of Trustees

Trustees are elected onto the Board through nomination by the current Trustee Board. New Trustees are provided with an induction by the current members.

Under the governing document, the number of Trustees shall not be less than three with no maximum number. A quorum is formed when one half of the Trustees are present or three, whichever is the greater number. All decisions are made by the Trustees.

Risk management

The trustees review, on an annual basis, the major risks which the charity faces to ensure that it has sufficient resources in the event of adverse conditions. The trustees have examined the operational and business risks which the charity faces and confirm that they are satisfied that systems and controls are established over key financial systems to mitigate any significant risks.

The main risks facing the Charity are as follows:

Education Outcomes, Legislation, and Compliance

Working with young people is a privilege that comes with significant responsibility. In promoting an alternative approach to mainstream education, we must not assume that because we have positive intent that this will automatically yield positive results for the young people in our care.

To ensure the well-being and development of our young people:

- We work with experts to inform our approach and ensure we are guided by research and the experience of more established democratic schools;
- Students participate in weekly coaching sessions to discuss their aims, progress, and any challenges they may currently be facing;
- Students complete regular self-assessments to understand how they are developing across a range of holistic measures (a broader set of



measures than mainstream schools, that includes academic outcomes);

- We engage our parents / carers as partners in their children's education, which necessitates far better, deeper, and more frequent dialogue than would be normal for a mainstream setting;
- Most importantly, we listen to our young people: they are in charge of their own learning, with choice and real power over what they do and how their community is run.

There are many laws and regulations that govern the education and care of young people. We have worked with Estyn (the Welsh equivalent of Ofsted) in completing our application to register as an Independent School, and we have paused our registration for the time being while Coronavirus restrictions are in place. We currently operate as a learning community of Elective Home Educators, ensuring our provision is for less than 50% of a standard school week and that we meet requirements for parent / carer to student ratios.

Financial sustainability

Our model is very low cost however we are a young organisation and have not yet established reliable income sources with which to sustain ourselves over the longer term. To address this we are engaging with potential donors to provide further seed funding, and we will hire an experienced General Manager who can ensure we are operating effectively and bring focus to our fundraising strategy. Research into trusts and foundations has demonstrated that our work is likely to receive support because it meets the criteria for numerous education and community focused funders.

There are opportunities for us to create reliable income streams by expanding our offering to include mainstream educated children and teachers, and we plan to launch pilot programmes over the next 12 months to test the market.

Legal and administrative information

Charity name

The Awen Project

Charity registration no.

1186305

Company registration no.

CE019562

Registered office

The Spinney
Twyncyn
Dinas Powys
CF64 4AS

Trustees

Charlotte Church	Chair	appointed 12 November 2019
Hannah Fitt	Vice-Chair	appointed 21 April 2021
Sean Bellamy		appointed 10 May 2021
Nicola Blenman		appointed 12 May 2021
Jonathan Powell		appointed 12 November 2019, resigned 10 May 2021
Kevin Rahman-Daultrey		appointed 12 November 2019, resigned 21 April 2021
Stella Smith		appointed 10 May 2021

Independent examiner

Andy Nash Accounting & Consultancy Ltd
Units 24 & 25
Goodsheds Container Village
Hood Road
Barry
CF62 5QU

Trustee spotlight: Sean Bellamy

Sean Bellamy is the founder and headteacher of Sands School, Devon, which has been running as a democratic school since 1987; a recognised expert in democratic education, he has over 30 years' teaching experience and works as a consultant with educators across the globe. Sean has worked with The Awen Project right from the start, providing advice, support, and challenge to the team and has recently joined our trustee board.

Sean explains his excitement and involvement with the Awen Project:

“The anthropologist and author Ursula le Guin wrote a set of beautiful novels, the Earthsea Trilogy, about a young wizard called Ged. In his training, he was taught this fundamental truth about the act of magic: to change a thing, you must first know its ‘real name’. To change a rock into a flower you must first understand the qualities of both. Teaching is an act of magic too. Every child has a real name. Their real name is the essence of who they are and who they may become if nurtured and challenged sufficiently. If we understand their real names, we can help them transform. If we teach them without ‘knowing them’, we are teaching rocks.

In Charlotte and Johnny I recognised two individuals committed to designing a school with such an intention and I knew from that moment that I wanted to work with them to design and support their vision. I have already seen children transformed by the experience. Why else do we do this thing called education if not to inspire and wake children up to their potential?

Against enormous odds, teachers make this magic of transformation happen every day, in every culture and every situation across the globe. In war zones, in ghettos and in the inner cities, we turn rocks into flowers. We help the shy child discover their confidence and unlock the passion for learning within those in front of us and every time we create a new school that embraces democracy, mutual respect and agency more of this magic occurs.

In classrooms across the planet, from the remote village school of a few children to schools where children are invisible within the sheer scale of the learning enterprise, we weave our spells and struggle to find the ‘real name’ of every child. It is a struggle. The system resists, the bureaucracy disables and the exam cultures anaesthetise, but educators who believe in relational learning continue to innovate and put children first.

The Awen Project holds me in its grip because built into its foundations is the desire to offer the knowledge and support to enable others to create schools like this and because the children and adults involved demonstrate what courage and passion can do to challenge an education system that has become reductionist and more science than art. It is more physics than it is magic, an act of breaking things down into a set of rules and laws and so reducing learning into an act of filling and not waking up.

This is why I am a Trustee. Even after 35 years as both a maverick and inquisitive learner, the Awen Project is teaching me new things about what schools, post Covid, could become and that excites me.”

Sean Bellamy

SEAN BELLAMY

TRUSTEE



Statement of Board of Trustees' responsibilities

The Trustees are responsible for preparing the Trustees' Annual Report and the financial statements in accordance with applicable law and regulations.

Charity law requires the Trustees to prepare financial statements for each financial year. Under that law they are required to prepare the financial statements in accordance with UK Accounting Standards and applicable law (UK Generally Accepted Accounting Practice), including FRS 102 The Financial Reporting Standard applicable in the UK and Republic of Ireland.

Under charity law the Trustees must not approve the financial statements unless they are satisfied that they give a 'true and fair' view of the state of affairs of the Charity and of the excess of income over expenditure for that period. In preparing these financial statements, the Trustees are required to:

- select suitable accounting policies and then apply them consistently;
- make judgements and estimates that are reasonable and prudent;
- state whether applicable UK Accounting Standards have been followed, subject to any material departures disclosed and explained in the financial statements; and,
- prepare the financial statements on the going concern basis unless it is inappropriate to presume that the Charity will continue its activities.

The Trustees are responsible for keeping adequate accounting records that are sufficient to show and explain the Charity's transactions and disclose with reasonable accuracy at any time the financial position of the Charity and enable them to ensure that the financial statements comply with the Charities Act 2011. They have general responsibility for taking such steps as are reasonably open to them to safeguard the assets of the Charity and to prevent and detect fraud and other irregularities.

The Trustees are responsible for the maintenance and integrity of the corporate and financial information included on the Charity's website.

Legislation in the UK governing the preparation and dissemination of financial statements may differ from legislation in other jurisdictions. In addition, the Trustees confirm that they are happy that the content of the Annual Review in pages 5-12 meet the requirements of the Trustees' Annual Report under charity law.

They also confirm that the financial statements have been prepared in accordance with the accounting policies set out in the notes to the accounts and comply with the Charity's governing document, the Charities Act 2011 and Accounting and Reporting by Charities: Statement of Recommended Practice applicable to charities preparing their accounts in accordance with FRS 102, The Financial Reporting Standard applicable in the UK and Republic of Ireland published on 16 July 2014.

This report was approved and authorised for issue by the Board of Trustees on 14 June 2021 and signed on its behalf by:



CHARLOTTE CHURCH

FOUNDER AND CHAIR OF TRUSTEES

Independent examiner's report

I report to the trustees on my examination of the accounts of The Awen Project (charity number 1186305) for the period ended 31 August 2020 set out on pages 14 to 19.

Respective responsibilities of trustees and examiner

The CIO's trustees are responsible for the preparation of the accounts in accordance with the requirements of the Charities Act 2011 (the Charities Act). The CIO's trustees consider that an audit is not required for this year under section 144 of the Charities Act and that an independent examination is needed.

It is my responsibility to:

- examine the accounts under section 145 of the Charities Act;
- to follow the procedures laid down in the general Directions given by the Charity Commission under section 145(5)(b) of the Charities Act; and,
- to state whether particular matters have come to my attention.

This report, including my statement, has been prepared for and only for the CIO's trustees as a body. My work has been undertaken so that I might state to the CIO's trustees those matters I am required to state to them in an independent examiner's report and for no other purpose. To the fullest extent permitted by law, I do not accept or assume responsibility to anyone other than the CIO and the CIO's trustees as a body for my examination work, for this report, or for the statements I have made.

Basis of independent examiner's statement

My examination was carried out in accordance with general directions given by the Charity Commission. An examination includes a review of the accounting records kept by the CIO and a comparison of the accounts presented with those records. It also includes consideration of any unusual items or disclosures in the accounts, and seeking explanations from the trustees concerning any such matters.

The procedures undertaken do not provide all the evidence that would be required in an audit, and consequently no opinion is given as to whether the accounts present a 'true and fair' view and the report is limited to those matters set out in the statement below.

Independent examiner's statement

I have completed my examination. I confirm that no material matters have come to my attention in connection with the examination giving me cause to believe that in any material respect:

- accounting records were not kept in respect of the CIO as required by section 130 of the Act; or
- the accounts do not accord with those records; or
- the accounts do not comply with the applicable requirements concerning the form and content of accounts set out in the Charities (Accounts and Reports) Regulations 2008 other than any requirement that the accounts give a 'true and fair' view which is not a matter considered as part of an independent examination.

I have no concerns and have come across no other matters in connection with the examination to which attention should be drawn in this report in order to enable a proper understanding of the accounts to be reached.



ANDREW PHILIP NASH ACA

MEMBER OF THE INSTITUTE OF CHARTERED ACCOUNTANTS IN ENGLAND AND WALES – 2461833

DATED: 24 June 2021

Andy Nash Accounting & Consultancy Ltd
Units 24 & 25
Goodsheds Container Village
Hood Road
Barry
CF62 5QU

Charity number 1186305

Statement of financial activities

For the period ended 31 August 2020

	Notes	Unrestricted Funds 2020 £	Restricted Funds 2020 £	Total Funds 2020 £
Income from:				
Donations and legacies	2	166,000	-	166,000
Charitable activities	3	367	-	367
Total income		166,367	-	166,367
Expenditure on:				
Charitable activities	4	141,592	-	141,592
Total expenditure		141,592	-	141,592
Net income/(expenditure)		24,775	-	24,775
Reconciliation of funds:				
Balance brought forward	7 & 8	-	-	-
Balance carried forward	7 & 8	24,775	-	24,775

The notes on pages 16 to 19 form part of the financial statements.

All the above results arise from continuing activities.

There were no other recognised gains or losses other than those stated above.

As this is the first financial period of operations there are no comparative figures to present and the current period represents a period shorter than a year as it reflects the activities from registration of the Charity on 12 November 2019 to 31 August 2020.

Balance sheet

As at 31 August 2020

	Notes		Total Funds 2020 £
Current assets			
Debtors	5	154	
Cash at bank and in hand		25,701	
Total current assets		<u>25,855</u>	
Creditors -			
amounts falling due within one year	6	(1,080)	
Net current assets			24,775
Net assets			<u>24,775</u>
Funds of the charity:			
Unrestricted funds			
General funds	7 & 8	24,775	
			<u>24,775</u>

The notes on pages 16 to 19 form part of the financial statements.

All the above results arise from continuing activities.

There were no other recognised gains or losses other than those stated above.

As this is the first financial period of operations there are no comparative figures to present and the current period represents a period shorter than a year as it reflects the activities from registration of the Charity on 12 November 2019 to 31 August 2020.

These financial statements were approved and authorised for issue by the Board of Trustees on 14 June 2021 and signed on their behalf by:



CHARLOTTE CHURCH

FOUNDER AND CHAIR OF TRUSTEES

Notes to the financial statements

1. Accounting policies

Basis of preparation of the financial statements

The financial statements have been prepared in accordance with 'Charities SORP (FRS 102) - Accounting and Reporting by Charities: Statement of Recommended Practice applicable to charities preparing their accounts in accordance with the Financial Reporting Standard applicable in the UK and Republic of Ireland (FRS 102) second edition (effective 1 January 2019)', the Financial Reporting Standard applicable in the UK and Republic of Ireland (FRS 102), including Update Bulletin 1, and relevant charities law.

The effect of any event relating to the period ended 31 August 2020, which occurred before the date of approval of the financial statements by the Board of Trustees has been included in the financial statements to the extent required to show a true and fair view of the state of affairs at 31 August 2020 and the results for the year ended on that date.

The functional currency of the Charity is sterling and amounts in the financial statements are rounded to the nearest pound.

Using the exemption available to smaller charities the Board of Trustees has chosen not to include a Statement of Cash Flows within the financial statements.

Legal status

The Awen Project is a charitable incorporated organisation registered in England & Wales, and meets the definition of a public benefit entity. The registered office is The Spinney, Twyncyn, Dinas Powys, CF64 4AS.

Shorter accounting period

As a result of this being the first accounting period of the Charity, the accounting period is shorter than twelve months as it covers the period from registration on 12 November 2019 to 31 August 2020, a period of just over nine and a half months.

Going concern

The Trustees have assessed whether the use of the going concern basis is appropriate and have considered possible events or conditions that might cast significant doubt on the ability of the Charity to continue as a going concern. The Trustees have made this assessment for a period of at least one year from the date of approval of the financial statements.

The Trustees have considered the Charity's forecasts and projections and have taken account of pressures on income. After making enquiries, the Trustees confirm that the Charity has adequate resources to continue in operational existence for the foreseeable future and that there are no material uncertainties that would impact this assessment. The ongoing COVID-19 pandemic has had no material impact on this assessment. The Charity therefore has adopted the going concern basis in preparing its financial statements.

Fund Accounting

General funds are unrestricted funds which are available for use at the discretion of the Trustees in furtherance of the general objectives of the Charity and which have not been designated for other purposes.

Restricted funds are funds that are to be used in accordance with specific restrictions imposed by donors or that have been raised by the Charity for particular purposes. The cost of raising and administering such funds are charged against the specific fund. There are currently no restricted funds within the Charity.

Income

All income is included in the Statement of Financial Activities when the Charity has entitlement, there is probability of receipt and the amount is measurable.

For donations and gifts this is when they are received. Gift Aid is recognised on a receivable basis as part of the income to which it relates.

Income from charitable activities and grants is credited to the Statement of Financial Activities when received or receivable whichever is earlier, unless it relates to a specific future period or event, in which case it is deferred.

Expenditure and irrecoverable VAT

Expenditure is accounted for on an accruals basis and liabilities are recognised as expenditure when there is a legal obligation committing the Charity to the expenditure, it is probable that settlement will be made, and the obligation can be measured.

Non-recoverable VAT is included against the expenditure heading to which it relates.

Indirect costs, including governance costs, which cannot be directly attributed to activities, are allocated between activities proportionate to the direct costs incurred in those activities.

Taxation

As a registered charity income and gains are exempt from Corporation Tax to the extent that they are applied to the charitable objectives.

Tangible fixed assets and depreciation

Tangible fixed assets are stated at cost less accumulated depreciation and any impairment losses, with individual assets over £500 being capitalised. There are no assets held over this value currently.

Cash at bank and in hand

Cash at bank and in hand includes cash in hand, deposits with banks and funds that are readily convertible into cash at, or close to, their carrying values, but are not held for investment purposes.

Debtors

Trade and other debtors are recognised at the settlement amount after any trade discount is applied.

Creditors

Creditors are recognised where the Charity has a present obligation resulting from a past event that will probably result in the transfer of funds to a third party, and the amount due to settle the obligation can be measured or estimated reliably.

Financial instruments

Basic financial instruments are measured at amortised cost other than investments which are measured at fair value.

Critical estimates and judgements

In preparing financial statements it is necessary to make certain judgements, estimates and assumptions that affect the amounts recognised in the financial statements. The treatment of tangible fixed assets is sensitive to changes in useful economic lives and residual values of assets. These are reassessed annually.

In the view of the Trustees in applying the accounting policies adopted, no judgements were required that have a significant effect on the amounts recognised in the financial statements nor do any estimates or assumptions made carry a significant risk of material adjustment in the next financial year.

2. Income from donations and legacies

	Unrestricted Funds 2020 £	Restricted Funds 2020 £	Total Funds 2020 £
Donations	166,000	-	166,000
Total income from donations and legacies	166,000	-	166,000

3. Income from charitable activities

	Unrestricted	Restricted	Total
	Funds	Funds	Funds
	2020	2020	2020
	£	£	£
Contributions for activities	367	-	367
Total income from charitable activities	367	-	367

4. Expenditure on charitable activities

	Unrestricted	Restricted	Total
	Funds	Funds	Funds
	2020	2020	2020
	£	£	£
Educationalists and other consultants	57,972	-	57,972
Refurbishment of the Annex at the Spinney	64,406	-	64,406
Set-up costs - resources	13,743	-	13,743
Administration and other costs	2,827	-	2,827
Governance	2,644	-	2,644
Total expenditure on charitable activities	141,592	-	141,592

During the current financial period £64,406 was spent on refurbishing the Annex at the Spinney which is also the residential address for Charlotte Church and Jonathan Powell, who at the time were both trustees of The Awen Project. The expenditure included construction costs as well as consultancy and planning fees to enable an area separate from the main portion of the property, that had previously been utilised as a studio, to be altered to allow it to be used for educational activities for a temporary period up to 30 July 2020. The work carried out including installing toilets suitable for pupils, as well as amending access to the building. This was deemed to be a suitable temporary location for the activities of the charity whilst more permanent options were explored. Expenditure on provision of educational facilities is in line with the charitable objects of The Awen Project. The work brings no financial benefit to the two trustees as the space would need significant work before it could be used for residential purposes.

This expenditure has not been capitalised in the accounts as, in line with the planning permission granted by the Vale of Glamorgan Council, this area is no longer being utilised for this purpose.

In addition, the expenditure incurred on this refurbishment was more than covered by unrestricted donations into the Charity by trustees (see note 10) and so no publicly raised funds were spent on this, and no gift aid has been claimed on those donations.

Governance costs includes the following items:

	Unrestricted	Restricted	Total
	Funds	Funds	Funds
	2020	2020	2020
	£	£	£
Insurance expense	1,564	-	1,564
Independent examination	1,080	-	1,080
Total expenditure on governance	2,644	-	2,644

5. Debtors

	Total
	2020
	£
Prepayments	154
Total debtors	154

6. Creditors - amounts falling due within one year

	Total
	2020
	£
Accruals	1,080
Total creditors - amounts due within one year	1,080

7. Analysis of charity funds

	Balance brought forward 2020 £	Income in period 2020 £	Expenditure in period 2020 £	Balance carried forward 2020 £
Unrestricted funds	-	166,367	(141,592)	24,775
Total charity funds	-	166,367	(141,592)	24,775

8. Analysis of net assets

	Unrestricted Funds 2020 £	Restricted Funds 2020 £	Total Funds 2020 £
Current assets	25,855	-	25,855
Current liabilities	(1,080)	-	(1,080)
Total charity funds	24,775	-	24,775

9. Trustee remuneration

During the year, no Trustee received any remuneration. No members of the Board of Trustees received reimbursement of expenses related to attendance at Trustee meetings.

10. Related party transactions

There were no related party transactions during the period other than the expenditure on the refurbishment of the Annex at The Spinney noted within note 4 above.

Total unrestricted donations from trustees amounted to £166,000 in the period.

11. Guarantees and secured charges

As at 31 August 2020 the Charity did not have any outstanding guarantees to third parties nor any debts secured against assets of the Charity.

