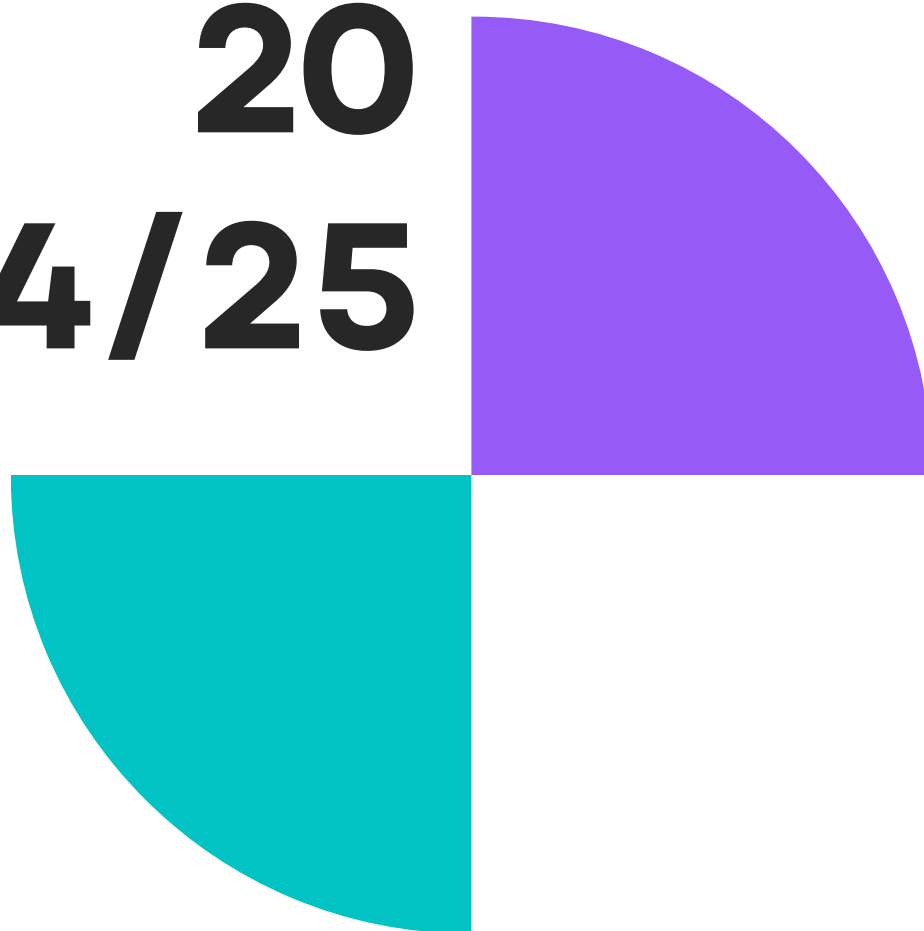




Bristol Autism Support

# Annual Report

**20  
24/25**



Charity Registration Number - 1186287

[www.bristolautismsupport.org](http://www.bristolautismsupport.org)



# About BAS

Bristol Autism Support (BAS) is a peer-to-peer support charity for parents and carers of autistic children and adults, either diagnosed or undiagnosed. Our goal is to improve outcomes for autistic individuals by providing their parents and carers with information and timely support whilst connecting them with networks of their peers. By supporting and informing them we can empower them to better support the autistic people in their lives.

Bristol Autism Support began in 2012 as a small group meet-up in a local pub, initiated by our Founding Director, Kate Laine-Toner, then a mother of a toddler with autism who couldn't find any local support. It has grown into a successful charity with over 4,000 families in our network. BAS primarily support parents and carers of children in the Bristol area (including North Somerset, South Gloucestershire and BANES). Most parents and carers engaged with BAS prior to their child's autism assessment and for some time after they are diagnosed.

In 2023, BAS also became the South West hub for the Autism Central contract. This is an NHS contract delivered in partnership with the National Autistic Society, we are their sub contractor responsible for the delivery of the Autism Central Peer Education Programme for the whole of the South West.

This has been an ambitious project for a small charity but BAS has risen to the challenge, expanding our networks across Somerset, Gloucestershire, Wiltshire, Dorset, Devon and Cornwall, increasing our support to parents and carers of adults, personal assistants and people across the South West of England. Autism Central has been commissioned by NHS England's Workforce, Training and Education Team and is delivered nationally by nine not-for-profit organisations led by the National Autistic Society,

The Autism Central Hubs offer guidance to families, carers and personal assistants of autistic people. All of our sessions are run by Peer Educators. These are parents or carers of autistic people who are happy to share their knowledge and experience. Peer Educators offer group and 1-1 sessions to nurture mutual support, offer information, and help carers and parents find services and networks available to them.

**[www.bristolautismsupport.org](http://www.bristolautismsupport.org)**

**Charity Registration Number - 1186287**





# Introduction

## The BAS team

2024/25 has been another year of continued growth for Bristol Autism Support. Our services and the team have grown significantly over the year - we now have 9 employees, and an increasing number of freelancers and volunteers who support our ongoing work in both our core area and the wider South West region.

One of the biggest undertakings of the year has been continuing the delivery of the Autism Central Peer Education Programme in partnership with the National Autistic Society. This has enabled our team to grow and provide more support to families as well as increasing our impact across the whole of the South West of England.

### Highlights of the year include:

- 15 successful family events, including Children's Scrapstore sessions, Victorian Christmas at the SS Great Britain and Cycling on the Strawberry Line.
- 2 successful 6 week Music therapy courses
- Our Fortnightly sensory sessions at 'Supersense' in South Bristol.
- The launching of our Community bookshelf at the Imperial Sports Ground in Bristol. This has become a popular way to share books related to Autism with families.
- Delivery of our very highly valued 'Support Block' short courses. 3 and 6 week blocks of information and training sessions for parents with 100% of people reporting increased confidence.
- Start of new Cadbury Heath 'Stay and Play' sessions for children and families.
- The launch of our 'BAS Podcast' to enable us to reach a wider audience.
- We also made the news in December with our tips for supporting Neurodivergent loved ones at Christmas. You can still find our tips on our Instagram page.
- Increased our Facebook online community to 4.7K members.
- Delivered 436 sessions, a 21.5% increase in delivery from the previous year.

## Headline stats

**Total Number of People Supported**

**3904**

**Total Number of Sessions Delivered**

**436**

**Charity Registration Number - 1186287**



# Chair's Report 2024-25

This reporting period has been defined by continued expansion and significant impact for Bristol Autism Support (BAS). We are proud to report a year of robust growth in service delivery.

Our core goal remains meeting the high and increasing demand for support, driven in part by the 5,000 children who were on diagnosis waiting lists as of March 2024. In response, we expanded our capacity for providing personalised 1-1 support calls for families. The number of meet-ups offered were up 21% on the previous reporting period, which included the provision of new support groups and coffee mornings led by demand and family well being events that provided an enriching and inclusive experience for those that participated. A total of 3904 people were supported by our services with 436 sessions delivered in total.

A major focus of the year was the successful delivery of a contract delivered in partnership with The National Autistic Society. As their South West partner we were responsible for the delivery of the Autism Central Peer Education Programme. The program was designed and delivered by people with first hand experience of Autism. This initiative enabled us to deliver specialised training and information sessions to over 1000 attendees, with 100% of attendees reporting increased confidence. The sessions covered vital topics such as Demand Avoidance, ARFID (Avoidant Restrictive Food Intake Disorder), Distressed Behaviour and Sleep.

Further enhancing our outreach, we launched key initiatives including the BAS Podcast in October 2024, and the Community Bookshelf. We also celebrated the sustained success of BAS Dads, which marked its 2nd year of running sessions with 105 attendees, and began a new partnership with 'Supersense' in South Bristol providing fortnightly access to state of the art sensory facilities. This substantial service delivery was made possible by the dedication of our volunteers. Our thriving team provided over 860 volunteer hours, and our Peer Educator team grew significantly to 39 members by December 2024.

Looking ahead, our strategic goals for 2025/26 centre on professionalising the organisation and ensuring a sustainable future. We are recruiting a Chief Executive to oversee the day to day running of the charity. This will enable the trustees to focus on strong charity governance and strategic oversight.

BAS remains committed to ensuring that our core services are fully funded and continue to expand to meet the growing needs of local families.





# BAS Vision and Aims

---

## Vision

To nurture, empower and connect parents and carers in order to improve outcomes for Bristol's autistic children

## Mission

To provide high quality, face to face or virtual support and the latest correct, useful and crucial information to parents and carers of autistic children in Bristol

To provide a safe haven and a community for Bristol's autism families in order to reduce isolation and improve mental and physical wellbeing

## Our aims

**Inform:** we continuously gather new information about support, benefits and autism and share it with our community. We train parents / carers new to autism on how best to support their child and themselves. Our website is a valuable portal for parents, carers, professionals and the general public to access information about supporting individuals with autism.

**Support:** we support our service users through meetings, training, advocacy, online, telephone and email support

**Empower:** we strive to provide the latest, relevant and necessary information for parents and carers so that they can make informed decisions about their child's care and education.

**Connect:** we provide a wide range of opportunities for parents and carers to connect, form friendships and be part of a community of understanding people.

**Opportunity:** we provide a wide range of volunteering opportunities that help volunteers gain new skills that could be used to gain employment.

**Collaborate:** we work with other organisations to provide new and novel support options for our service users.

# Our Impact

People directly supported in 2024-25

3904

Sessions delivered

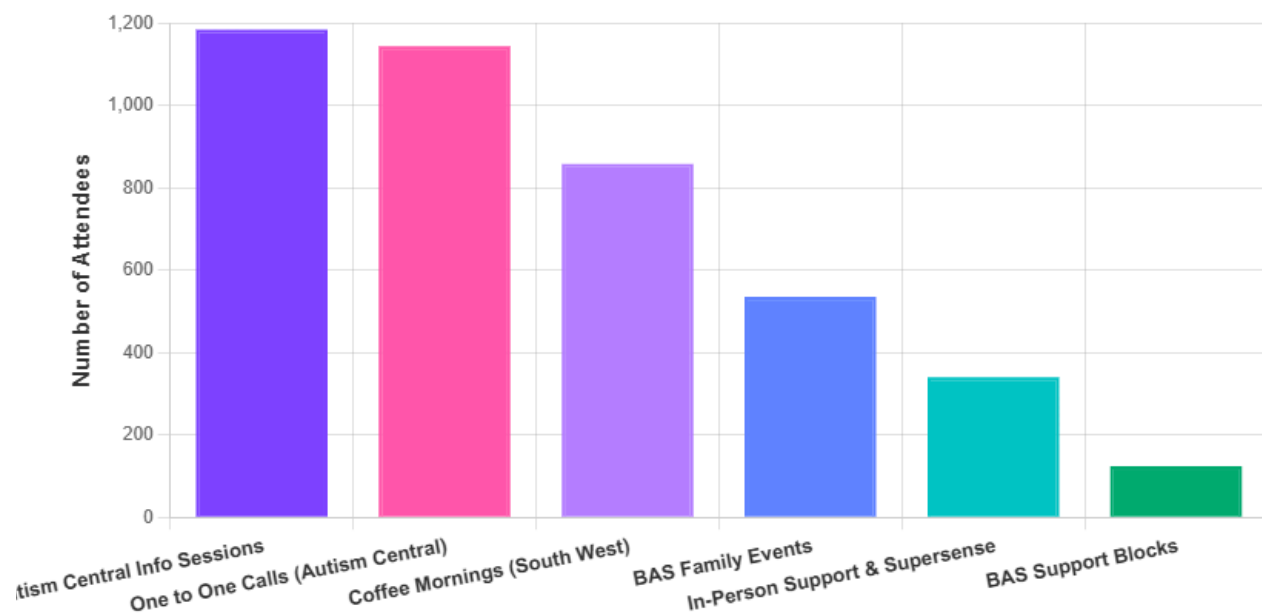
436

2024/25 has seen a 21.5% increase in the number of sessions delivered when compared with January to December 2024

## Attendees in 2024-2025

### Bristol Autism Support Services

Total Attendance by Service Type (April 2024 - 2025)



### Key Insights

- **Highest Engagement:** Autism Central services (Information Sessions, coffee mornings and 1:1 calls) represent the largest portion of our delivery, totalling over 2,400 people directly supported.
- **Community Support:** In person meet ups and support groups remain a significant pillar of our Southwest outreach with over 1000 attendees at coffee mornings and support groups.

# Treasurer's Report 2024-25

This reporting period has been foundational for Bristol Autism Support (BAS), characterised by meaningful and measured impact, continued service growth and expansion into new areas.

This year saw a significant increase in operational activity, requiring careful and well-planned financial and resource management. BAS continues to professionalise its internal structures and processes to ensure the organisation remains fit for purpose and able to grow in a sustainable and well-governed way. Although the accounts show a small operational loss, this was planned for and fully supported by the balance carried forward from a multi-year contract.

The organisation's financial needs continue to be driven by unprecedented demand for our services. During this period, BAS delivered 21% more meet-ups and provided additional personalised 1-to-1 support calls, in-person sessions and information events. With 5,000 children on the waiting list for diagnosis as of March 2024, the pressure on BAS to increase capacity remains significant.

We are pleased to report substantial success in securing vital funding during this reporting cycle. A key milestone was achieved in January 2025 with a three-year grant from The National Lottery Reaching Communities Fund (2025–27). Further positive visibility came from a £1,000 anonymous cash donation in June 2024, which received favourable media coverage. These funding boosts contributed to a year in which BAS supported a record number of people.

Our fundraising efforts were further strengthened through corporate partnerships with National Friendly, who selected us as their charity partner, along with continued support from the Bristol Hoteliers Association and DoubleTree by Hilton Hotel.

Looking ahead to 2025/26, we anticipate increased expenditure due to expected rises in National Insurance and Living Wage costs. This will require careful planning and strong financial governance to support our continued growth.

It is the trustees policy to hold between 3 and 6 months running costs in reserves. We are actively continuing to build reserves in 2025/26.

Our strategic priorities for the year ahead include:

- Diversifying income streams as we work towards financial sustainability.
- Ensuring our essential core services remain fully funded.
- Reviewing and improving internal systems.

Key milestones will include:

- Migrating our financial processes to Xero accounting software.
- implementing a new CRM system to support fundraising and communications
- Recruiting a Chief Executive to provide consolidated leadership and guide BAS into its next phase of development.



# Quotes from Families

*I am very grateful for the work you do and without all the help I have received from BAS, I really do think I would be in a much worse place and so would my 2 children.*

*All the staff and volunteers make everyone so welcome and genuinely invest in you and your children.*

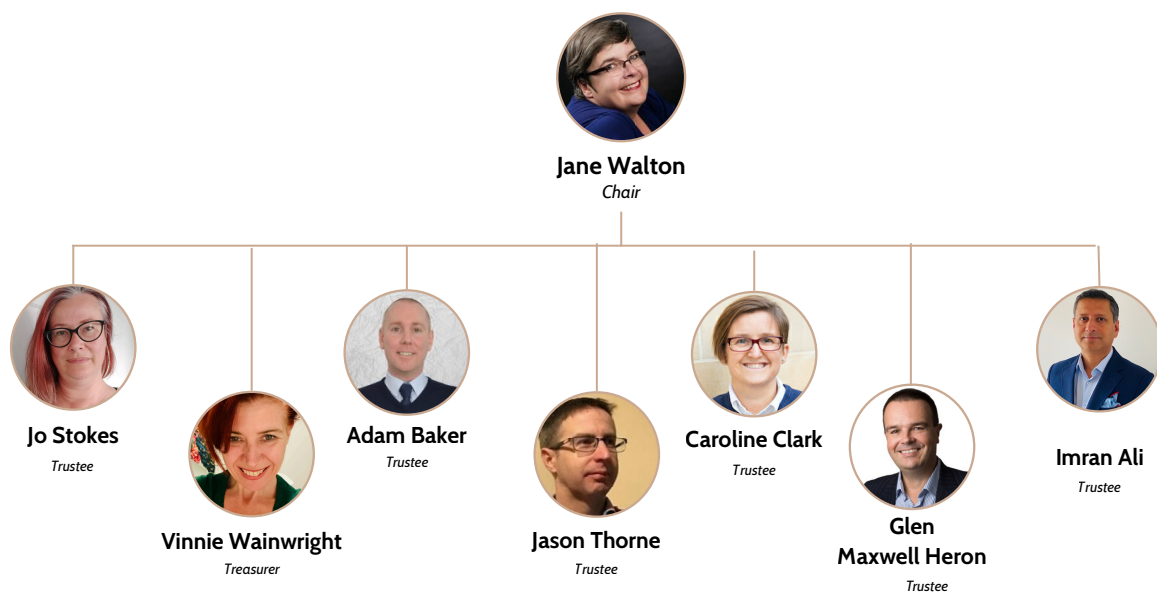
*The support, the training sessions, the 1-1 calls are all utterly brilliant*

*Without Bristol Autism Support: "I would not have a support network of other people and information that was accessible and supportive for me and my children. I would feel a lot more isolated."*

*We have felt better informed, supported and no longer alone. Previously we felt we were parenting wrong and it was all our fault, BAS showed us lots of people experience the same challenges and feel like we do. It normalised our life and gave us tools to look after our autistic child better.*

# Our People

Bristol Autism Support is a registered C.I.O led by the board of trustees which is supported by our Operations team, volunteers, peer educators and self employed trainers. Our trustees are responsible for overseeing the governance and strategic direction of the charity. The majority of our trustees are also parents or carers of autistic children. BAS currently has eight trustees:



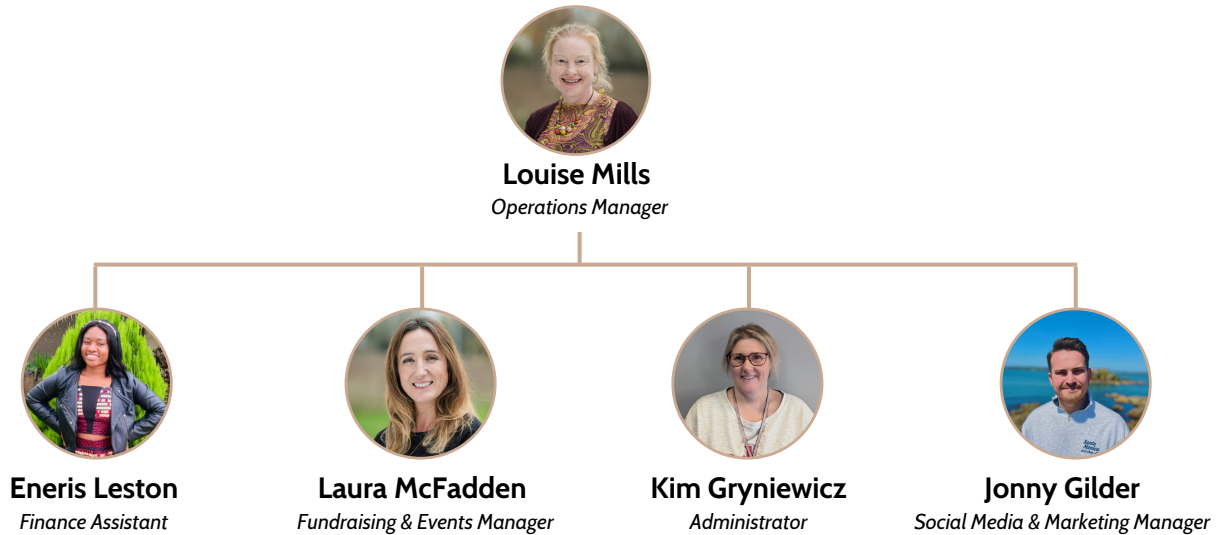
## Volunteers

BAS has a strong team of volunteers; alongside our eight trustees, we have 32 peer support volunteers who help at our in-person support sessions, provide peer support to new members and administer our Facebook groups.

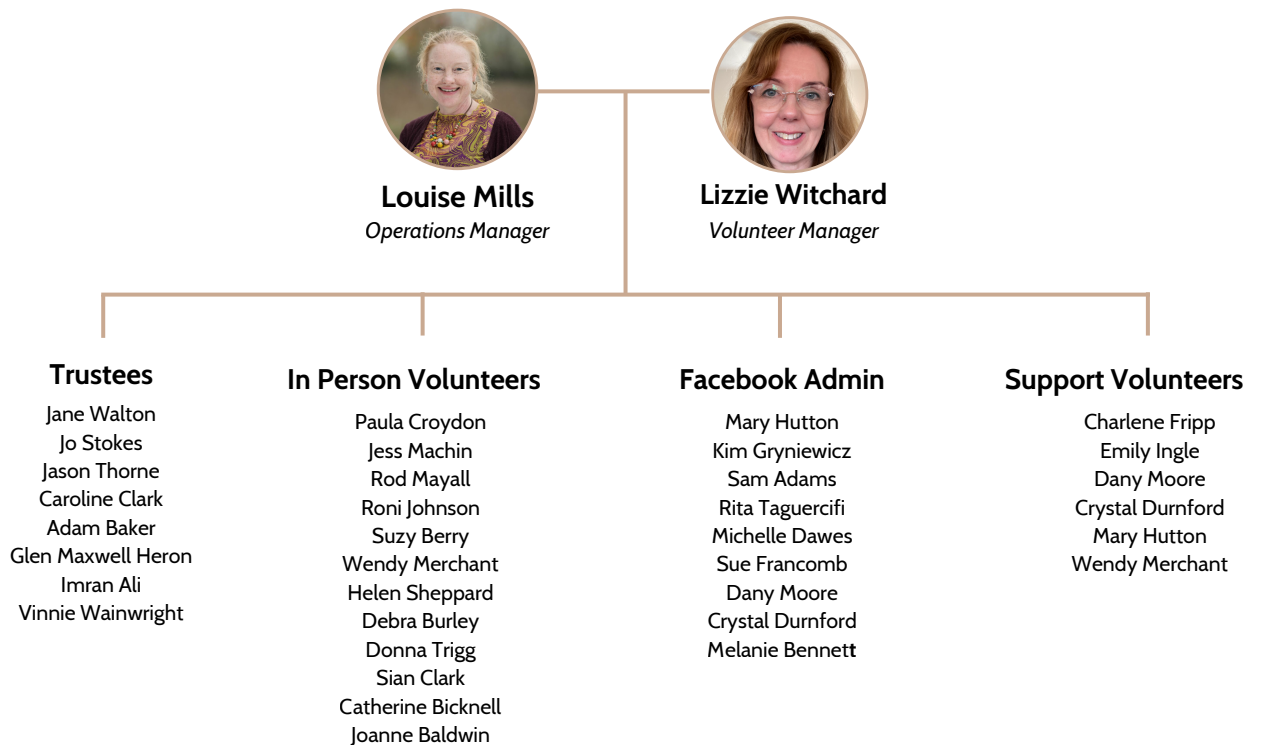
## Bristol Autism Support Team

The BAS team of 13 has 9 part-time employees (up from 6 in 2023) and a further 4 part time workers / freelancers delivering our day-to-day services. Several of our team members also provide voluntary hours to BAS and our team are also supported by our Peer Educators.

# BAS Operations Team



## Volunteer Team



## Autism Central Team



**Abby Francis**  
*Hub Coordinator / Peer Educator*



**Jade Page**  
*Autism Central Hub Lead*



**Amy Phipps**  
*WAC / Trainer*



**Loren Snow**  
*WAC / Trainer*  
**Torbay**  
**Plymouth**  
South Devon



**Laura McFadden**  
*WAC*  
**North Somerset**  
Kim Gryniewicz  
Melissa Allen  
Emma Walker  
Laura Shaw  
**Somerset**  
Maria Hansell



**April Iles**  
*WAC*  
**Gloucestershire**  
Ian McRae  
**Torbay**  
Rebecca Box  
Helen Baker  
**Plymouth**  
Paula Kaminska  
Keith Clark  
**BANES**  
Jane Kemp



**Lizzie Witchard**  
*WAC*  
**Bristol**  
Tracy Baggott  
Hollie Baxter  
Laura Manning  
Christina Morgan  
Sapna Boden  
Louise Mills  
**South Gloucs**  
Zoey Inglis



**Saira Stringer**  
*WAC*  
**Wiltshire**  
Heidi Logie  
Laura Hughes  
Emma Jefferd  
Swindon  
Kam Dellar  
**Cornwall**  
Beth Collis  
Ruth Adkins



**Vicky Cooksley**  
*WAC*  
**Devon**  
Julia Mitchell  
Ursula Easton Pool  
**Dorset**  
Alison Carey  
**BCP**  
Mark Arnold  
Charlotte Lovell  
Jenny Rowe

## Peer Educators

Listed above we have our Peer Educators who work for us across South West England. As of December 2024, we had a team of 39 Peer Educators. The Peer Educators deliver the Autism Central Peer Education Programme by offering in-person and online group sessions.

# Partners and Funders





# Fundraising

2024/25 has been an exciting year for fundraising and donations. We even had a mystery donation of £1k cash through the post, which made the national press! The wonderful businesses and individuals who have raised money for Bristol Autism Support mean that we can continue to provide support, advice, and events for our families, as well as cover the ongoing costs of running the charity. We continue to be grateful to our members and supporters who regularly donate to us, including our Friends of BAS and those on payroll giving.

National Friendly chose us as their charity partner for 2024/25 and, in May, presented us with a cheque for an incredible £3,350. They had many fundraising events throughout the year, including a quiz, silent auction, bake sale and a 100km sponsored run/walk.

In 2024/25 we have received invaluable support from the Doubletree Hilton, Bristol City Centre. The team at the Hilton have helped us in so many ways. A group of hotel staff ran the Bristol 10K and provided rooms for our events and National Friendly's fundraising quiz. BAS volunteers ran their cloakrooms over their festive period at Christmas, with all donations going to BAS. We are so incredibly grateful to them for their continued support and loyalty.

This year, BAS is delighted to have been chosen as a charity partner by the Brigstowe Mercure, who donated a delicious lunch for our volunteers at our Christmas get-together and provided catering for our team training day. They have a sponsored 2500 kilometres on spinning bikes planned for 2025. We have also been chosen as a charity partner by Chorus, who have a lot of fundraising planned for 2025/26.



# Areas of operation

---

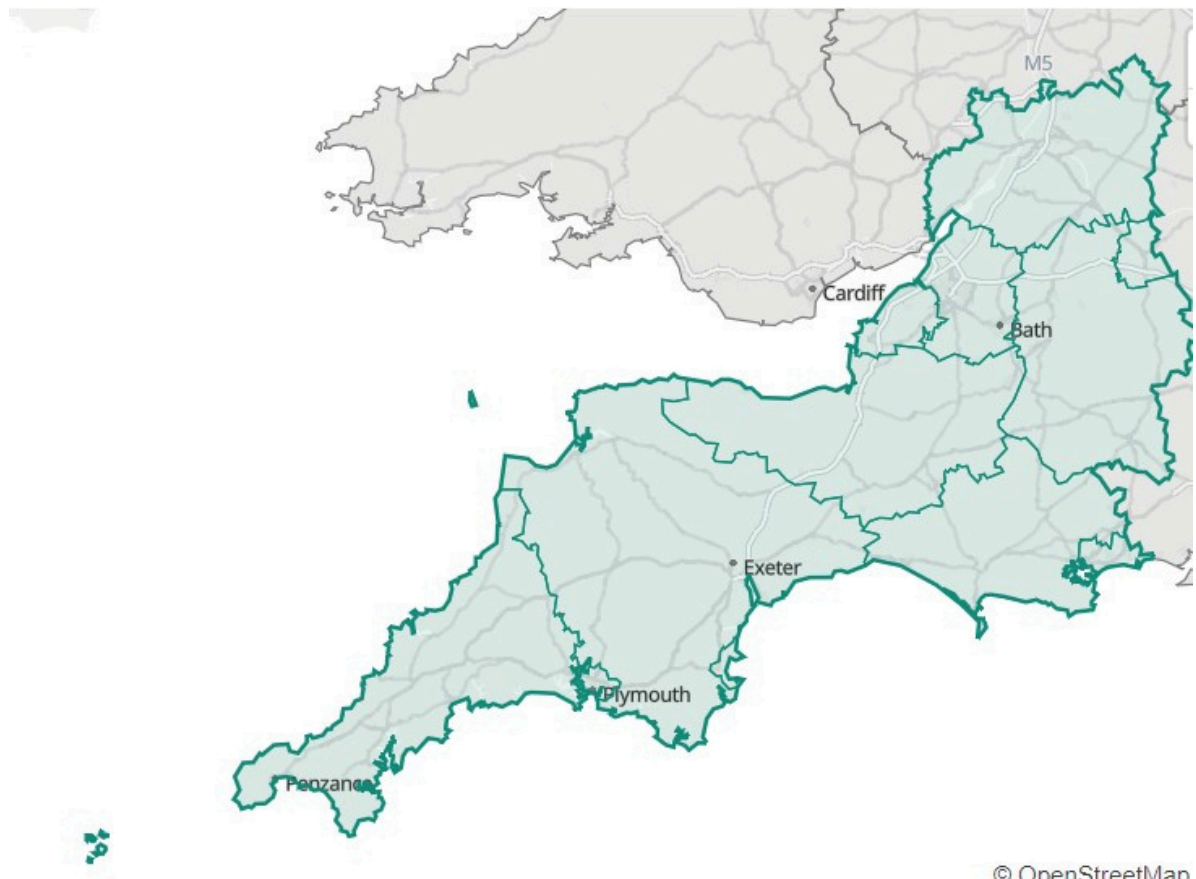
## Who do we support

Our core service users/members are based in the Bristol Area (Bristol, South Gloucestershire, North Somerset and BANES). The majority of these users are parents and carers of autistic children. By the end of March 2025, we had over 1700 members registered in this area and 4.8K members in our main Facebook group for this area.

## Areas we cover

Parents and carers in our core area (Bristol and surrounding authority areas) are able to become members of Bristol Autism Support, access our Facebook group, join our support blocks and attend wellbeing and family events. These services are not available outside our core area.

However, through the Autism Central Peer Education Programme, we also support parents and carers of autistic adults and children alongside personal assistants across the whole South West Area.



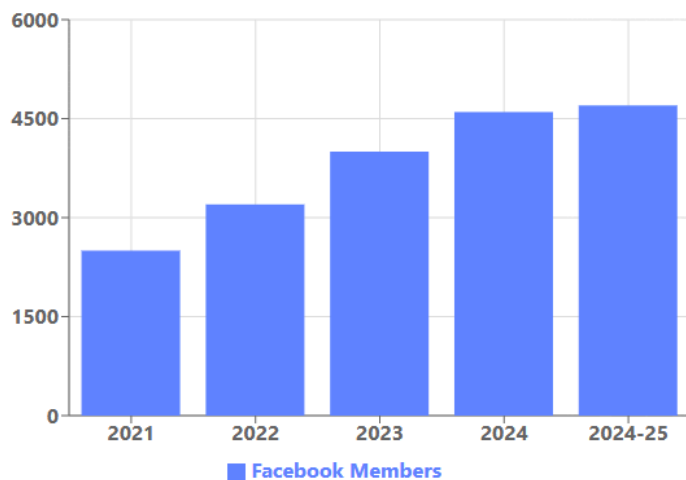
# BAS Community

**1,744**

BAS members

**4,700**

Facebook members



## Website

Our website continues to be updated with the latest information and advice to support families.

Surveys with members and service users demonstrate that initially most people find us and connect with us online, our Facebook group and website being the most popular.

With the launch of the Autism Central Program last year, we added a page to the website focussed specifically on this offer where those needing 1-1 support can book a call or video call directly.

## Social Media

Our 2024/25 social media growth is most prominent in our Facebook group and Instagram pages, which have seen 13% and 23% growth, respectively, across the year. Our social media presence is very important because it means we are reaching more families and growing our community. Our Facebook groups and 'BAS Village' are managed entirely by volunteers.

**Website - [www.bristolautismsupport.org](http://www.bristolautismsupport.org)**

**Charity Registration Number - 1186287**

# Sensory Play Sessions

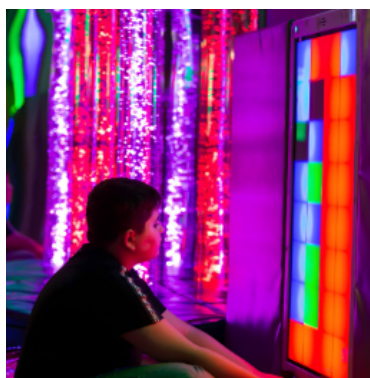
BAS holds fortnightly sessions at 'SuperSense' at Imperial Sports Ground -South Bristol. Super Sense is a purpose built state of the art sensory room which gives parents and carers the opportunity to talk to our team in an environment where their children can safely have fun and engage in sensory play. During 2024-25 we have worked with three different age group sessions to meet the needs of our regular attendees and to ensure we reach as many families as possible.

Our small sensory play and support group sessions held here are:

1. Any age child
2. School-aged children
3. Children aged 8+

**20** Sensory Sessions

**117** People supported



*'It has been wonderful to connect with other families that have children out of education.'*

*'A fantastic environment where my child is happy and I can talk with other parents.'*

*Thanks for everything you do to help support families like mine. It's very much appreciated.'*



# Family Events

In response to member requests for more family activities, BAS held 15 family events in 2024-25 designed to bring together families and enable children to access activities that may be challenging without the right support or provisions in place. These included four Gympanzees sessions, Circus Starr, Halloween at the Aquarium, Art and Wellbeing sessions, Victorian Christmas at the SS Great Britain, and Cycling at the Strawberry Line .Additional funding from The National Lottery allowed for us to provide both a six week and a 12 week music therapy course for a small group of young people.

## 679 Attendees at events



### Music Therapy

*"I am very grateful for the opportunity for my child to take part in this. She loves music & now I know that percussion is where to focus with her. She also has two new friends from doing this, & that is very special "*

*"The sessions had a big impact on my son. He learnt he could leave a space and return when ready and was able to apply the same at school."*



# Family Events



## Strawberry Line Cycle Project

*'The opportunity to meet up with other BAS families and to do something we don't normally do was invaluable. B really enjoyed a sense of freedom cycling in a safe place. Since her diagnosis in 2023, BAS has really been a lifeline for her and for our family, providing support, expertise and experiences that would otherwise not be open to us.'*

*'J absolutely loved cycling along the Strawberry Line with his Dad. He hopes to do it again.'*



## Children's Scrapstore Workshop

*'It was so lovely to have access to the Scrapstore. P absolutely loved being able to explore lots of textures and materials. Being autistic myself I find messy play, arts and crafts very difficult so it's great she was able to access this in a safe space away from home. Thank you BAS'*



# Support Groups

In addition to our more casual meet-ups/coffee mornings, we also offer in-person support groups.

**75** Support groups  
**363** Attendees

In 2024-25 we held:

- 20 In person South Bristol Support Groups with 104 attendees
- 18 In person North Bristol Support Groups with 119 attendees
- 7 In person Broomhill Support Groups with 37 attendees
- 21 Online Support Groups with 51 attendees
- 7 Online EBSA groups with 45 attendees
- 1 Online Sleep session with 7 attendees



## Attendee quote:

*"Since joining Bristol Autism Support, I've felt far less isolated. Before, it often felt like no one really understood what life is like parenting an autistic child. The group has given me a real sense of community and belonging. I now have people I can talk to who just 'get it' and I've learned so much from others' experiences and practical advice. I feel more confident navigating challenges and advocating for my son's needs."*

# Meet Ups

At the core of BAS is the aim to connect parents and carers, enabling them to share information and form friendships. Since 2023 our number of in person meet ups has increased substantially, going from 74 in 2023, to 92 in 2024. For March 2024-2025 we hosted 127 meet-ups, with 444 attendees at these sessions. Our coffee mornings and meet-up groups are intended to be casual opportunities to meet other parents and carers along with our team.

Popular meet-ups include special sessions for grandparents, dads and male carers. With additional funding received from The National Lottery, the Autism Central Peer Education Programme and the Bentley Foundation, we have been able to increase our locations and new groups this year, including Fishponds, Hillfields, Nailsea, and Weston-super-Mare.

**444** Attendees

**127** Meet ups / coffee mornings



*"It was so great to meet other parents who understand."*



*"Please keep up all of your good work and big shout out to the autism coffee morning. We need you!"*

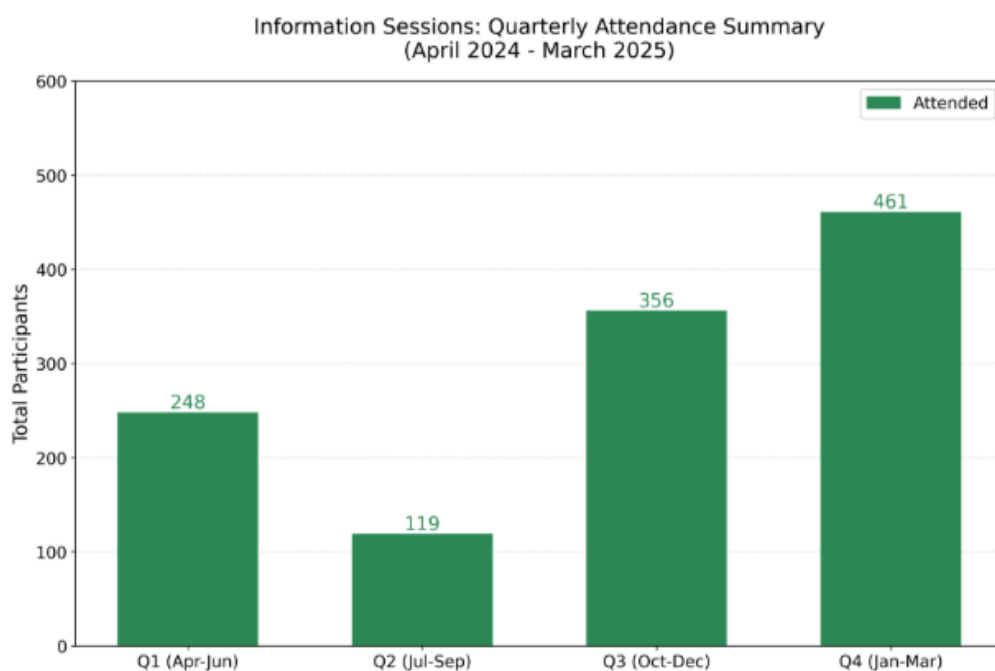


# Information Sessions

Our increase in size to deliver the Autism Central Programme enabled us to offer more **Information Sessions**, with **79** of the **80** sessions BAS delivered contributing to the programme between April 2024 and March 2025.

The information topics span 36 different course titles, from **Autism and Food** to **Applying for Disability Living Allowance**.

**80** Information Sessions  
**1081** Attendees



**Course attendee highlights:**

*"The informative and brilliant trainers and the reflective lived experience."*

*"Non judgemental. Learnt a lot about the Queer community and displacing myths. Felt encouraged child would find a tribe when older"*

Our peer support calls and helpline service have been staffed by our Autism Central Wrap Around Coordinators. They deliver our 1-1 support through email phone and video call.

Between April 2024 and March 2025, we provided personalised 1-1 support to 1144 parents and carers, compared to 1,156 in 2024 and 852 in 2023

**1144** Individual parent carer support sessions

**8** Wrap Around Coordinators

**39** Peer Educators Recruited & Trained

**14** Sessions delivered for Personal Assistants

*"Thank you so much for spending the time talking to me today. I have felt like I wasn't getting anywhere and couldn't find a way forward as no one was helping. It's been really helpful and reassuring, to finally talk to someone who gets it"*

*"It's incredibly valuable to have someone to talk to 1:1, who understands and can listen and offer advice. Thank you"*

# Support Blocks

The NHS Bristol, North Somerset and South Gloucestershire ICB have funded BAS over the past two years to provide short courses aimed at supporting families waiting for, or who recently received, an autism diagnosis for their child.

In 2024-25, BAS held 17 short courses for 124 attendees. The courses are led by our trainers, who present information on autism support topics, followed by time for discussion. Groups are held online or in-person over three to six weeks, enabling attendees to get to know each other.

**17** Sessions

**124** Attendees

Group	Groups	Attendees
New to Autism Primary / Under 11's	4	23
New to Autism Secondary	3	22
Supporting Distressed Behaviours	3	19
Sensory Differences	4	29
Anxiety & Masking	3	31
Total	17	124

## 'Feedback from Support Blocks

- Average sessions rating 4.9 out of 5
- 100% of attendees reporting increased confidence increased
- 100% would recommend BAS to other families.

*"I have found these course so helpful, and you have all been so supportive. I really needed this to just not feel alone and to know there are many people and organisations I can go to for help for my son & for myself."*

*"I can't express enough gratitude to BAS. They have been extremely helpful and supportive."*

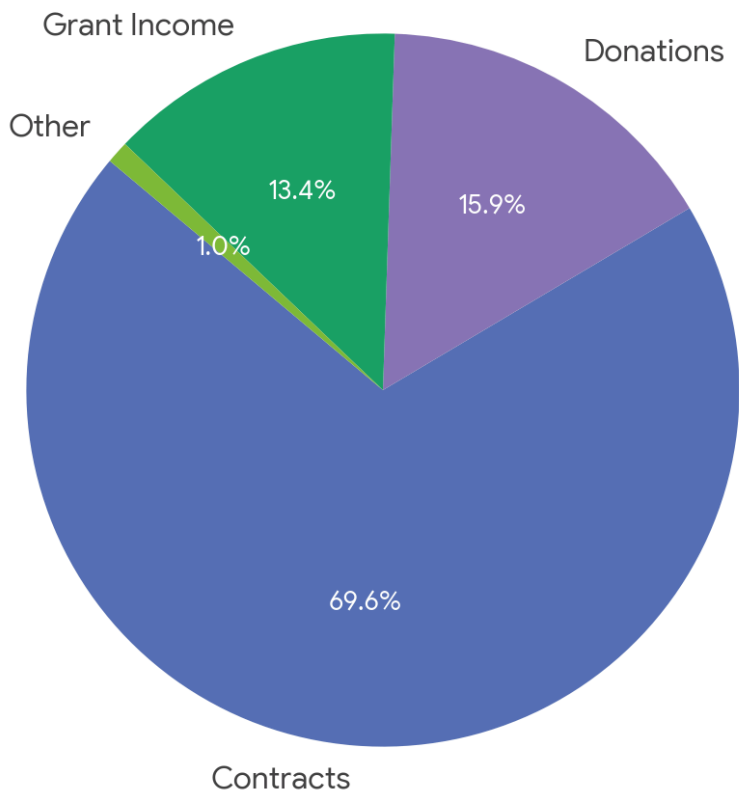
*The sessions were very informative and resources were recommended for free stuff to encourage us to try activities with our children. "*

# Financial Breakdown

Whilst contracts and grants still make up the majority of our income, 2024/25 was an incredible year for fundraising and donations to BAS, totally almost 16% of our total income. A fundraising page is now on our website, with further developments planned for 2025/26 Individual supporters and organisations can find out how to raise funds for BAS, including one-off donations, regular donations and charity partnerships.

## Income and Expenditure

### Income Totals



Total Income: £229,763  
Total Expenditure: £215,430

[www.bristolautismsupport.org](http://www.bristolautismsupport.org)

Charity Registration Number - 1186287

# Looking forward to 2025/26

---

2025/26 will be a year for us to continue to expand our presence across the South West as part of the continued growth of the Autism Central Peer Education Programme. It is an exciting time for BAS; we intend to increase our presence across the South West and consolidate our offer to families and carers. We will achieve this by continuing to increase the number of Peer Educators we recruit in all of our target areas, allowing us to deliver quality information and support to more families.

In addition, BAS will be working hard to ensure that our core offers of support, information, training and family activities are fully funded to meet the growing needs of local families of autistic children.

In response to our findings from the impact survey, in 2025/26 we will be undertaking a review of our Vision, Mission and Values to ensure that we are continuing to meet the needs of our growing community. As part of this process the trustees will be reviewing our objects to see how we can update our mission to meet the needs of more people including older young people and Neurodivergent individuals, not just parents and carers. We will continue to listen and respond to ensure that we remain relevant in a rapidly evolving environment.

**Charity Registration Number - 1186287**

**[www.bristolautismsupport.org](http://www.bristolautismsupport.org)**



# **Bristol Autism Support**

---

Unaudited financial statements Year ended 31 March 2025

Independent examination completed 28th January 2025

## **Contents**

- Administrative Details
- Independent Examiner's Report
- Statement of Financial Activities
- Balance Sheet
- Statement of Notes to the Financial Statements

## **Bristol Autism Support Administrative Details**

C.I.O Registered in England and Wales

Registered Charity Number 1186287

## **Registered address**

Knowle West Media Centre

Leinster Avenue

Bristol, BS4 1NL

## **INDEPENDENT EXAMINER**

Linden Accountants

21 Sevier Street,

St Werburghs

Bristol

BS2 9LB

# INDEPENDENT EXAMINER'S REPORT TO THE TRUSTEES OF BRISTOL AUTISM SUPPORT

I report to the charity's trustees on my examination of the accounts of Bristol Autism Support for the period ended 31 March 2025.

## **Respective responsibilities of trustees and examiner**

The charity's trustees consider that an audit is not required for this year (under section 43(2) of the Charities Act 1993 (the Act), as amended by s.145 of the Charities Act 2011) and that an independent examination is needed.

Having satisfied myself that the charity is not subject to audit under the company law and is eligible for independent examination; it is my responsibility to:

- Examine the accounts (under section 145 of the 2011 Act), To follow the
- procedures laid down in the General Directions given by the Charity Commission
- (under section 145(5)(b) Act), and to state whether particular matters have come to my attention.

## **Basis of independent examiner's report**

My examination was carried out in accordance with General Directions given by the Charity Commission. An examination includes a review of the accounting records kept by the charity and a comparison of the accounts presented with those records. It also includes consideration of any unusual items or disclosures in the accounts, and seeking explanations from you as trustees concerning any such matters. The procedures undertaken do not provide all the evidence that would be required by audit, and consequently no opinion is given as to whether the accounts present a "true and fair view" and the report is limited to those matters set out in the statement below.

## **Independent examiner's statement**

In the course of my examination, no matter has come to my attention:

(1) which gives me reasonable cause to believe that in any material respect:

The accounting records were not kept in accordance with section 130 of the Charities Act; or the accounts did not accord with the accounting records; or the accounts did not comply with the applicable requirements concerning the form and content of accounts set out in the Charities (Accounts and Reports) Regulations 2008 other than any requirement that the accounts give a 'true and fair' view which is not a matter considered as part of an independent examination.

(2) to which, in my opinion, attention should be drawn in order to enable a proper understanding of the accounts to be reached.

*Mike Grant*

Michael Grant ACPA

Date ..... 28 January 2026 .....

**Michael Grant Linden Accountants, Scrapstore House, 21 Sevier Street, St Werburghs, Bristol, BS2 9LB**



# BRISTOL AUTISM SUPPORT STATEMENT OF FINANCIAL ACTIVITIES

## (Including Income and Expenditure Account) YEAR ENDED 31 MARCH 2025

		Unrestricted Funds	Restricted Funds	Total Funds 2025	Total Funds 2024 (Restated)
	Note	£	£	£	£
<b>INCOME</b>					
Donations	2	36,633	-	36,633	30,493
Merchandise Income		1,639	-	1,639	175
Events Income		-		-	1,193
Grant Income		21,400	9,393	30,793	76,678
Contracts		160,000		160,000	137,328
Other income	3	699	-	699	634
<b>TOTAL INCOME AND ENDOWMENTS</b>		<b>220,370</b>	<b>9,393</b>	<b>229,763</b>	<b>246,501</b>
<b>EXPENDITURE</b>					
Expenditure on charitable activities	4	223,449	25,912	249,361	204,851
<b>TOTAL EXPENDITURE</b>		<b>223,449</b>	<b>25,912</b>	<b>249,361</b>	<b>204,851</b>
<b>NET INCOME/(EXPENDITURE)</b>		<b>- 3,080</b>	<b>- 16,519</b>	<b>- 19,599</b>	<b>41,650</b>
Balances brought forward (restated)		55,891	20,572	76,463	34,814
Gross Transfers Between Funds	13			-	-
<b>Balances carried forward</b>		<b>52,811</b>	<b>4,053</b>	<b>56,864</b>	<b>76,464</b>

The charity has no recognised gains or losses other than the results for the year as set out above.

All of the activities of the charity are classed as continuing.



BRISTOL AUTISM SUPPORT  
 BALANCE SHEET  
 YEAR ENDED 31 MARCH 2025

	Note	2025 £	2024 £ (Restated)
FIXED ASSETS:			
Tangible assets	7		1,464877
CURRENT ASSETS:			
Debtors	8	2,239	-
Stock		-	-
Cash at bank and in hand		58,96	78,45
		4	1
		61,20	78,45
CURRENT LIABILITIES:			
		3	1
Creditors: falling due within one year	9	-5,803	-2,865
Net current assets		55,400	75,586
NET ASSETS:		56,864	76,464
FUNDS			
Unrestricted Funds	1	48,962	55,89
Restricted funds	3	7,902	1
	1		20,57
	3	56,864	26,464

These financial statements were approved by the directors and authorised for issue on 21st January 2025 and are signed on their behalf by:

*Jane Walton*

.....  
 Chair of Trustees - Jane Walton

Charity Registration Number: 1186287



BRISTOL AUTISM SUPPORT  
CONSOLIDATED STATEMENT OF CASH FLOWS  
YEAR ENDED 31 MARCH 2024

	2025	2024
	£	£
Net cash inflow from operating activities	(18,314)	42,875
Non-operational cash flows:		
Investing activities		
Payments for tangible fixed assets	(1,172)	(1,170)
Investment income	-	-
Financing activities		
Loan repayments	-	-
Net cash (outflow)/inflow for the year	(19,487)	41,705
Cashflow restrictions		

Charity law prohibits the use of net cash inflows on any endowed or other restricted fund to offset net cash outflows on any fund outside its own objects, except on special authority. In practice, this restriction has not had any effect on cash flows for the year.



# BRISTOL AUTISM SUPPORT NOTES TO THE FINANCIAL STATEMENTS YEAR ENDED 31 MARCH 2025

## 1 ACCOUNTING POLICIES Accounting convention

The financial statements have been prepared under the historic cost convention. The financial statements have been prepared in accordance with the Statement of Recommended Practice: Accounting and Reporting by Charities (FRS 102 SORP) issued in July 2014, and applicable UK Accounting Standards and the Charities Act 2011.

### Funds structure

**Unrestricted income funds** comprise those funds which the trustees are free to use for any purpose in furtherance of the charitable objects. Unrestricted funds include designated funds where the trustees, at their discretion, have set aside resources for a specific purpose.

**Restricted funds** are funds which are to be used in accordance with specific restrictions imposed by the donor or the terms of a specific appeal.

**Income** All income is recognised once the charity has entitlement to the resources, it is certain that the resources will be received and the monetary value of income can be measured with sufficient reliability.

### Income from donations is included when these are receivable, except as follows:

- When the donors specify that the donations given to the charity must be used in future accounting periods.
- When donors impose conditions which have to be fulfilled before the charity becomes entitled to use such income, the income is deferred until the pre-conditions have been met.

Income from grants, where there are performance or service deliverables required by the terms of the grant, are accounted for as the charity earns the right to payment through its performance.

**Expenditure** Liabilities are recognised as expenditure as soon as there is a legal or constructive obligation committing the charity to the expenditure. All expenditure is accounted for on an accruals basis and has been classified under headings that agree all costs related to the category. Support costs have been allocated 100% towards the charitable activities of the charity.

**Charitable activities** Charitable expenditure comprises those costs incurred by the charity in the delivery of its activities and services for its beneficiaries. It includes both the direct pay and non-pay costs and support costs relating to those activities.

**Going concern** After making appropriate enquiries, the trustees have a reasonable expectation that the charity has adequate resources to continue its operations for the foreseeable future and therefore they have continued to adopt the going concern basis when preparing the financial statements.

### Governance costs

Governance cost include those costs associated with meeting the constitutional and statutory requirements of the charity, and include its independent examination fees and costs linked to the strategic management of the charity including trustee expenses.

# BRISTOL AUTISM SUPPORT NOTES TO THE FINANCIAL STATEMENTS YEAR ENDED 31 MARCH 2025

Tangible fixed assets and depreciation Depreciation has been provided on all tangible fixed assets at rates calculated to write off the cost, less estimated residual value of each asset, over its expected useful life. The rates used are 25% reducing balance on computer and office equipment and 20% reducing balance on other fixed assets.

## 2 DONATION INCOME

	Unrestricted Funds £	Restricted Funds £	Total Funds 2025 £	Total Funds 2024 £
Donations from individuals	6,209	-	6,209	1,186
Donations from organisations	16,106		16,106	19,712
Friends of BAS donations	9,462		9,462	2,510
Other Donations	4,855		4,855	7,085
	<u>36,633</u>	<u>-</u>	<u>36,633</u>	<u>29,307</u>

## 3 OTHER INCOME

	Unrestricted Funds £	Restricted Funds £	Total Funds 2025 £	Total Funds 2024 £
HMRC Gift Aid	699	-	699	304
	<u>699</u>	<u>-</u>	<u>699</u>	<u>304</u>



# BRISTOL AUTISM SUPPORT NOTES TO THE FINANCIAL STATEMENTS YEAR ENDED 31 MARCH 2025

## 4 DIRECT CHARITABLE EXPENDITURE

### Charitable Activities

	Unrestricted Funds £	Restricted Funds £	Total Funds 2025 £	Total Funds 2024 £
<u>Core Costs</u>				
Projects, Events & Course Costs	5,558	8,722	14,280	2,047
Merchandise Costs	-	-	-	60
Fundraising Costs	621	-	621	1,215
<u>Overheads</u>				
Accounting & Bookkeeping	2,365	76	2,440	1,140
Bank Charges			-	
Consultancy Fees			-	25,459
Office Consumables	661	-	661	2,512
Salaries & Freelance Staff Costs	197,604	11,529	209,133	145,892
IT software & consumables	2,158	18	2,176	-
Marketing, Printing & Website	2,587	760	3,347	3,423
Membership & Subscription Costs	-	-	-	252
Professional Fees	600	32	922	2,068
Rental costs	5,664	1	5,952	5,310
Stationery	552	28	552	1,754
Staff Training	221	427	648	-
Telephone & Internet costs	990	138	1,128	-
Travel & Subsistence Costs	595	670	1,265	3,256
Venue Hire	2,181	2,964	5,145	4,252
Volunteer Costs			-	1,638
General Expenses			-	-
	<u>222,358</u>	<u>25,912</u>	<u>248,270</u>	<u>200,277</u>

### Governance Costs

	Unrestricted Funds £	Restricted Funds £	Total Funds 2025 £	Total Funds 2024 £
Independent Examination Fee	450	-	450	450
Depreciation	586	-	586	895
In su ran ce	56	-	56	3,229
	<u>1,092</u>	<u>-</u>	<u>1,092</u>	<u>4,574</u>



# BRISTOL AUTISM SUPPORT NOTES TO THE FINANCIAL STATEMENTS YEAR ENDED 31 MARCH 2025

## Charitable Activities - Prior Year

	Unrestricted Funds £	Restricted Funds £	Total Funds 2024 £	Total Funds 2023 £
<u>Core Costs</u>				
Events & Course Costs	-	2,047	2,047	-
Merchandise Costs	60	-	60	92
Fundraising Costs	1,215	-	1,215	8
				34
				5
<u>Overheads</u>				
Arval vehicle leasing	-	-	-	2,662
Bank Charges	2,030	-	2,030	154
Consultancy Fees	-	25,459	25,459	7,053
Office Consumables	1,147	1,364	2,512	781
Wages & Freelance Staff Costs	12,706	133,186	145,892	60,742
Gifts	-	-	-	1,205
Marketing, Printing & Website	1,703	1,720	3,423	1,896
Membership & Subscription Costs	252	-	252	998
Professional Fees	840	338	1,179	-
Rental costs	-	5,310	5,310	603
Stationery	835	919	1,754	12,181
Travel & Subsistence Costs	-	3,256	3,256	4,166
Venue Hire	25	3,994	4,252	-
Volunteer Costs	9	685	1,638	
General Expenses	95			
	2			
	<u>21,999</u>	<u>178,278</u>	<u>200,277</u>	<u>93,713</u>

## Governance Costs - Prior Year

	Unrestricted Funds £	Restricted Funds £	Total Funds 2024 £	Total Funds 2023 £
Independent Examination Fee	45	-	450	450
Depreciation	0	-	895	1,935
In su ran ce	89	3,229	3,229	96
	5			
	<u>1,345</u>	<u>3,229</u>	<u>4,574</u>	<u>2,481</u>

## 5 CORPORATION TAX

The charity is exempt from tax on income and gains falling within section 505 of the Taxes Act 1988 or section 252 of the Taxation of Chargeable Gains Act 1992 to the extent that these are applied to its charitable objects. No tax charges have arisen in the charity.

# BRISTOL AUTISM SUPPORT NOTES TO THE FINANCIAL STATEMENTS YEAR ENDED 31 MARCH 2025

## 6 STAFF NUMBERS AND COSTS

Staff costs were as follows:

	2025	2024
	£	£
Wages for employed staff	140,972	92,129
Social security costs	3,478	5,603
Pension contributions	2,440	1,644
	<u>146,891</u>	<u>99,376</u>

The average number of employees (including senior management and leadership) during the year was:

	2025	2024
Staff	9	7

No individual employee earned more than £60,000.00 during the current or prior period.

### Key management personnel

The charity defines the key management personnel as the Trustees, Operations Manager and Parent Support Manager. During the financial period, the total employment benefits of the key management personnel were £59,686.16 (previous year £57,389.54).

## 7 TANGIBLE FIXED ASSETS

	Computer Equipment £	Office Equipment £	Resource Equipment £	Totals £
<b>COST:</b>				
At 1 April 2024	2,156	1,251	300	3,70
Additions	799	373	-	7
				<u>1,17</u>
At 31 March 2025	<u>2,955</u>	<u>1,624</u>	<u>300</u>	<u>4,879</u>
<b>DEPRECIATION:</b>				
At 1 April 2024	1,278	1,251	300	2,829
Charge for the year	492	93	-	586
				<u>3,415</u>
At 31 March 2025	<u>1,771</u>	<u>1,344</u>	<u>300</u>	<u>3,415</u>
<b>NET BOOK VALUE:</b>				
At 31 March 2025	<u>1,184</u>	<u>280</u>	<u>-</u>	<u>1,464</u>
At 31 March 2024	<u>877</u>	<u>-</u>	<u>-</u>	<u>877</u>



# BRISTOL AUTISM SUPPORT NOTES TO THE FINANCIAL STATEMENTS YEAR ENDED 31 MARCH 2025

## 8 DEBTORS

	2025 £	2024 £
Trade Debtors	-	-
Prepayments	2,239	-
	<u>2,239</u>	<u>-</u>

## 9 CREDITORS: amounts falling due within one year

	2025 £	2024 £
Accruals	1,140	1,140
Trade Creditors	194	-
Net Wages Liability	-	-
PAYE, NI and Student Loans	3,875	1,404
Pension Contributions	595	322
	<u>5,803</u>	<u>2,865</u>

## 10 RECONCILIATION OF NET MOVEMENT IN FUNDS TO NET CASH INFLOW FROM OPERATING ACTIVITIES

	2025 £	2024 £
<u>Statement of Financial Activities: Net movement in funds</u>	(19,599)	41,650
Depreciation	586	89
Increase in operational creditors: current liabilities	2,938	5
Decrease / (increase) in operational debtors	(2,240)	33
(Increase) / decrease in stock	-	0-
	<u>(18,314)</u>	<u>42,875</u>
Net cash (outflow) / inflow from operating activities		

## 11 ANALYSIS OF CHANGES IN CASH DURING THE YEAR

	2025 £	2024 £	Change £
Cash at bank and in hand	58,964	78,451	(19,487)
	<u>78,451</u>	<u>36,746</u>	<u>41,705</u>



# BRISTOL AUTISM SUPPORT NOTES TO THE FINANCIAL STATEMENTS YEAR ENDED 31 MARCH 2025

## 12 ANALYSIS OF NET ASSETS BETWEEN FUNDS

	Unrestricted Funds £	Restricted Funds £	Total Funds 2025 £	Total Funds 2024 £
Fixed Assets	1,464	-	1,464	877
Current Assets	53,301	7,902	61,203	78,451
Current Liabilities	(5,803)	-	(5,803)	(2,865)
	<u>48,962</u>	<u>7,902</u>	<u>56,864</u>	<u>76,464</u>
Prior Year (restated)	Unrestricted Funds £	Restricted Funds £	Total Funds 2024 £	Total Funds 2023 £
Fixed Assets	877	-	877	-
Current Assets	57,878	20,573	78,451	8,911
Current Liabilities	(2,865)	-	(2,865)	-
	<u>55,891</u>	<u>20,573</u>	<u>76,464</u>	<u>8,911</u>

## 13 ANALYSIS OF CHARITABLE FUNDS

Analysis of Fund movements	Balance b/fwd £	Income £	Expenditure £	Transfers £	Fund c/fwd £
Unrestricted funds:					
Designated funds					
BNSSG ICB Support Blocks	13,120	20,000	(15,512)	-	17,608
ICB Pins Project	-	1,000	(520)	-	480
Autism Central Hub South West	8,016	160,000	(138,750)	-	29,266
Zebera - Podcast Equipment	-	400	-	-	400
Friends of BAS	585	2,777	(3,591)	-	(229)
General funds	34,171	36,193	(65,077)	(3,849)	1,438
	<u>55,891</u>	<u>220,370</u>	<u>(223,450)</u>	<u>(3,849)</u>	<u>48,962</u>

# BRISTOL AUTISM SUPPORT NOTES TO THE FINANCIAL STATEMENTS YEAR ENDED 31 MARCH 2025

## 8 DEBTORS

	2025 £	2024 £
Trade Debtors	-	-
Prepayments	2,239	-
	<u>2,239</u>	<u>-</u>

## 9 CREDITORS: amounts falling due within one year

	2025 £	2024 £
Accruals	1,140	1,140
Trade Creditors	194	-
Net Wages Liability	-	-
PAYE, NI and Student Loans	3,875	1,404
Pension Contributions	595	322
	<u>5,803</u>	<u>2,865</u>

## 10 RECONCILIATION OF NET MOVEMENT IN FUNDS TO NET CASH INFLOW FROM OPERATING ACTIVITIES

	2025 £	2024 £
Statement of Financial Activities: Net movement in funds	(19,599)	41,650
Depreciation	586	89
Increase in operational creditors: current liabilities	2,938	5
Decrease / (increase) in operational debtors	(2,240)	33
(Increase) / decrease in stock	-	0-
Net cash (outflow) / inflow from operating activities	<u>(18,314)</u>	<u>42,875</u>

## 11 ANALYSIS OF CHANGES IN CASH DURING THE YEAR

	2025 £	2024 £	Change £
Cash at bank and in hand	58,964	78,451	(19,487)
	<u>78,451</u>	<u>36,746</u>	<u>41,705</u>

## BRISTOL AUTISM SUPPORT NOTES TO THE FINANCIAL STATEMENTS YEAR ENDED 31 MARCH 2025

### 12 ANALYSIS OF NET ASSETS BETWEEN FUNDS

	Unrestricted Funds £	Restricted Funds £	Total Funds 2025 £	Total Funds 2024 £
Fixed Assets	1,464	-	1,464	877
Current Assets	47,171	29,293	76,464	36,746
Current Liabilities	(5,803)	-	(5,803)	(2,865)
	<u>42,832</u>	<u>29,293</u>	<u>72,125</u>	<u>34,758</u>
Prior Year (restated)	Unrestricted Funds £	Restricted Funds £	Total Funds 2024 £	Total Funds 2023 £
Fixed Assets	877	-	877	-
Current Assets	26,975	9,771	36,746	8,911
Current Liabilities	(2,865)	-	(2,865)	-
	<u>24,987</u>	<u>9,771</u>	<u>34,758</u>	<u>8,911</u>

### 13 ANALYSIS OF CHARITABLE FUNDS

Analysis of Fund movements	Ba l a n c e b/fwd £	Income £	Expenditure £	Transfers £	Fund c/fwd £
Unrestricted funds:					
Designated funds Support					
Blocks NHS ICB	13,000	-	(6,535)	-	6,465
ICB Pins Project	120	20,000	(8,977)	-	11,143
Autism Central Hub	-	1,000	(520)	-	480
	8,016	159,550	(138,750)	-	28,816
Zebera - Podcast Equipment	-	400	-	-	400
Friends of BAS	585	2,777	(3,591)	-	(229)
General funds	34,171	36,643	(65,077)	(3,849)	1,888
	<u>55,891</u>	<u>220,370</u>	<u>(223,450)</u>	<u>(3,849)</u>	<u>48,962</u>

## BRISTOL AUTISM SUPPORT NOTES TO THE FINANCIAL STATEMENTS YEAR ENDED 31 MARCH 2025

Restricted funds:	Balance b/fwd	Income	Expenditure	Transfers	Fund c/fwd
	£	£	£	£	£
National Lottery 'Awards For All'	10,000	- - -	(9,408)	-	592
National Lottery 'The People's Project'	3,648	- -	(7,592)	3,943	-
Quartet Express Fund	2,389	1,39	(3,109)	720	-
Quartet-Wessex Water	3,674	3	(3,753)	79	-
Triodos Foundation	861	5,00	(1,049)	-	(188)
Bentley ALC	-	0	(45)	-	(45)
Co-Op Local Community Fund	-	-	(500)	(893)	-
Masonic Charitable Fund	-	-	(288)	-	4,712
National Lottery Reaching Communities Fund South West Region	-	-	(169)	-	(169)
The Schroder Charity Trust	-	3,000	-	-	3,000
	<u>20,572</u>	<u>9,393</u>	<u>(25,912)</u>	<u>3,849</u>	<u>7,902</u>
Total	<u>76,464</u>	<u>229,763</u>	<u>(249,362)</u>	<u>-</u>	<u>56,864</u>

### Designated Fund & Transfers

During the financial period, several grants and contracts received by the charity were reclassified as designated funds and as such the charitable funds in note 13 for the prior year have been restated.

During the previous financial period, several laptops were purchased under the terms of the grant provision, and the ownership of these current year additions transferred to the charity.

### Fund Descriptions Restricted Funds

**National Lottery 'Awards For All'** To provide a yearlong sensory activities programme for young people and a programme of wellbeing events to connect our community and reduce isolation.

**National Lottery 'The People's Project'** Funding to support the ongoing delivery of our highly regarded in-person support groups and family wellbeing events

**Quartet Community Foundation Express Fund** Funding to support the delivery of our vital in-person events, the cost of essential staff training and to invest in charity infrastructure to support growth.

**Wessex Water Fund via Quartet Community Foundation** Funds to support the delivery of training sessions for parents, coffee mornings and the volunteer costs for the development of regular new volunteer-led evening meet ups including our 'BAS Dads' group.

# BRISTOL AUTISM SUPPORT NOTES TO THE FINANCIAL STATEMENTS YEAR ENDED 31 MARCH 2025

---

**Triodos Foundation** Funding to support our vital fortnightly 'Supersense' sessions in South Bristol. These are popular sessions proving access to a purpose built, state of the art sensory facility that caters specifically to the needs of Autistic children.

**Bentley Advancing Life Chances Initiative** To fund the development of two new coffee mornings in areas of identified need in Fishponds and Hillfields. Supporting parents to access information and develop peer support networks.

**Co-Op Local Community Fund** Funding to deliver wellbeing and social activities for parents and carers of autistic children, giving them a much needed break, and a chance to develop a support network.

**Masonic Charitable Fund** Contribution to core funds, supporting salaries that are key to the charities day to day running such as marketing, operations and administration, enabling us to keep vital services running for our community.

**National Lottery Reaching Communities Fund South West Region** To support BAS to deliver a wide range of support opportunities and improve and strengthen our community reach. Also to support the professionalisation of the organisation by improving monitoring systems.

**The Schroder Charity Trust** Contribution towards core running costs to support the day to day running and maintenance of vital services. Strengthening our community through services and opportunities which enhance the wellbeing and life outcomes of vulnerable and disadvantaged people.

**Designated Fund - Autism Central Hub South West Contract in partnership with National Autistic Society.** To deliver training, information and support for Parents and family members of children with Autism. Delivered via the provision of coffee mornings, training and information sessions and one-to-one helpline calls delivered by a network of peer educators with lived experience of Autism across the whole of the South West.

**Designated Fund - BNSSG ICB Support Blocks** 3 and 6 week support blocks on different autism related topics for families in Bristol, South Glos & North Somerset to facilitate delivery of various resource topics (New to Autism, Non Speaking, Sensory Processing Differences etc.)

**Designated Fund - ICB PINS Project** Agreement to deliver targeted training sessions to schools taking part in the PINS (Parental Partnerships for Inclusion of Neurodiversity in Schools). A National initiative aimed at supporting neurodivergent children in mainstream primary schools across England.

**Designated Fund - Zebera** - Podcast Equipment Private donation from the Zebera company for the purchase of specialist Podcasting equipment to launch our own Podcast to support and inform parents of autistic children with up to date and relevant information.

**Unrestricted Fund - Friends of BAS** Supporters group with donations specifically to support interpreter services, form filling and childrens' activities.

## BRISTOL AUTISM SUPPORT NOTES TO THE FINANCIAL STATEMENTS YEAR ENDED 31 MARCH 2025

### ANALYSIS OF CHARITABLE FUNDS

#### Prior Year (Restated)

Analysis of Fund movements	Balance b/fwd £	Income £	Expenditure £	Transfers £	Fund c/fwd £
Unrestricted funds:					
Designated funds					
BNSSG ICB Support Blocks	-	43,000	(29,880)	-	13,120
Autism Central Hub South West	(897)	137,328	(128,416)	-	8,016
Friends of BAS	2,419	2,510	(4,345)	-	585
General funds	25,043	31,302	(23,344)	1,170	34,171
	<u>26,565</u>	<u>214,140</u>	<u>(185,985)</u>	<u>1,170</u>	<u>55,891</u>
Restricted funds:					
	£	£	£	£	£
Action Funder	2,201	668	(2,869)	-	-
Bristol Charities Carer's Fund	912	-	(912)	-	-
BCC Training	1,610	-	(1,610)	-	-
Quartet BCC Social Action	3,525	-	(3,525)	-	-
National Lottery 'Awards For All'	-	10,000	-	-	10,000
National Lottery 'The People's Project'	-	11,193	(7,544)	-	3,648
Quartet Express Fund	-	5,000	(1,441)	(1,170)	2,389
Quartet & Wessex Water	-	4,000	(326)	-	3,674
Triodos Foundation	-	1,500	(639)	-	861
	<u>8,249</u>	<u>32,361</u>	<u>(18,867)</u>	<u>(1,170)</u>	<u>20,572</u>
Total	<u>34,814</u>	<u>246,501</u>	<u>(204,851)</u>	<u>0</u>	<u>76,464</u>

### Fund Descriptions - Prior Year Restricted Funds

**Action Funder** Funding to support an event facilitator for Gympanzees and Supersense sessions, and contribute towards events costs.

**Bristol Charities Carer's Fund** Funding to facilitate in person meetings, father and grandparent specific gatherings, coffee mornings and volunteer costs.

**BCC Training** Supporting training around parental conflict, as well as core ongoing costs.

**Quartet BCC Social Action Small Grant** Funding to facilitate publicity, marketing and venue costs for advice and support on cost of living.

---

**National Lottery 'Awards For All'** To provide a yearlong sensory activities programme for young people and a programme of wellbeing events to connect our community and reduce isolation.

---

**National Lottery 'The People's Project'** Funding to support the ongoing delivery of our highly regarded in-person support groups and family wellbeing events

---

**Quartet Community Foundation Express Fund** Funding to support the delivery of our vital in-person events, the cost of essential staff training and to invest in charity infrastructure to support growth.

---

**Wessex Water Fund via Quartet Community Foundation-** Funds to support the delivery of training sessions for parents, coffee mornings and the volunteer costs for the development of regular new volunteer- led evening meet ups including our 'BAS Dads' group.

---

**Triodos Foundation** Funding to support our vital fortnightly 'Supersense ' sessions in South Bristol. These are popular sessions proving access to a purpose built, state of the art sensory facility that caters specifically to the needs of Autistic children.

#### **Designated Fund - Autism Central Hub South West**

Contract in partnership with National Autistic Society. To deliver training, information and support for Parents and family members of children with Autism. Delivered via the provision of coffee mornings, training and information sessions and one-to-one helpline calls delivered by a network of peer educators with lived experience of Autism across the whole of the South West.

---

**Designated Fund - BNSSG ICB Support Blocks** 3 and 6 week support blocks on different autism related topics for families in Bristol, South Glos & North Somerset to facilitate delivery of various resource topics (New to Autism, Non Speaking, Sensory Processing Differences etc.)

**Unrestricted Fund** - Friends of BAS Supporters group with donations specifically to support interpreter services, form filling and childrens' activities.

## **14 TRUSTEES REMUNERATION, EXPENSES AND RELATED PARTY TRANSACTIONS**

During the current and prior financial period, no Trustee of the charity received remuneration for duties. Further to this, no Trustee of the charity submitted expenses to be reimbursed.

During the financial period one of the Trustees, Jane Walton, made monthly donations to the charity of £10.00 as part of the 'Friends of Bristol Autism Support' group.