



# THRIVE DEVON

## ANNUAL REPORT & ACCOUNTS

For the year end March 31<sup>st</sup> 2022

## Summary of Thrive Devon's Supported Housing

Thrive Devon provides female only supported accommodation for people who need help taking their next step into independent living. We offer places to anyone who meets our criteria regardless of their ethnicity, faith or sexual orientation.

### INDEX

- 1 General Information
- 2-5 Report of the Trustees
- 6 Statement of Financial Activities



## GOVERNANCE

Thrive Devon is a registered charity

We currently have 4 Trustees

1. Pennie Sutton
2. Giles Sutton
3. Gordon Roberts
4. Caroline Bright

**Registered Office**

KINGSBRIDGE FAMILY CHURCH OFFICE  
BAPTIST LANE, KINGSBRIDGE, TQ7 1QD

**Bankers**

Lloyds Bank

**Independent Examiner**

Not Required

**Charity Registered No**

1186254



## REPORT OF THE TRUSTEES AND GENERAL INFORMATION

### Principal Activity

The Prevention or Relief of Poverty

### Governing Instruments

The Charity is established as a Charitable Incorporated Organisation (CIO) and its activities are regulated by its constitution. The objects of the CIO are, for the public benefit, to provide supported housing accommodation with enhanced housing management services, in order to:

***RELIEVE THE NEEDS OF PEOPLE WHO ARE FORMER ROUGH SLEEPERS, VULNERABLY HOUSED PEOPLE OR PEOPLE WHO WOULD OTHERWISE BE AT RISK OF STREET HOMELESSNESS, IN KINGSBRIDGE, THE SOUTH HAMS AND SURROUNDING AREA, INCLUDING BUT NOT RESTRICTED TO EX-OFFENDERS, THOSE AFFECTED BY ILLEGAL SUBSTANCE AND ALCOHOL ADDICTIONS AND PEOPLE AFFECTED BY POOR MENTAL HEALTH BY THE PROVISION OF SUPPORTED HOUSING, ACCOMMODATION AND RELATED SUPPORT SERVICES.***

### Trustees

The above named have served during the year. The Trustees are kept informed of the activities and performance of the charitable organisation and provided with regular updates/ information. The composition of the board is kept under review and additional appointments will be made should the need arise. All trustees are made aware of their responsibilities.

The Trustees met quorate on the following dates:

23/09/21

05/10/21





During the early part of 2021 the main activities of the charity involved continuing our search for a suitable property and working on sourcing potential referral partners who would provide our first residents. Prior to 2021 we had begun to make some good connections with various organisations; however, we were hampered by the ongoing Covid-19 pandemic.

The street homelessness situation changed dramatically in the South Hams area with more people being housed due to Covid and local council protocol. Some of our link organisations changed their working practices with various individuals moving on resulting in some of those original connections being lost. We have had to make new referral connections but without up and running accommodation it has been a struggle to maintain the initial interest.

On the 20<sup>th</sup> September 2022 we were able to collect the keys to our property.

Although we knew that there would be some refurbishment required to update the property unfortunately on closer inspection far more work was needed than had initially been anticipated. The 'updating' turned into major renovations including a damp course. Plaster was hacked off in the kitchen and lounge area, with some replastering required. A new kitchen was fitted plus flooring to the kitchen, bathroom and bedrooms. Safety glass was required on internal doors. A new secure front door with safety glass was required together with fire doors and a fire/smoke alarm. Not to mention decoration throughout.

### Mid renovation:





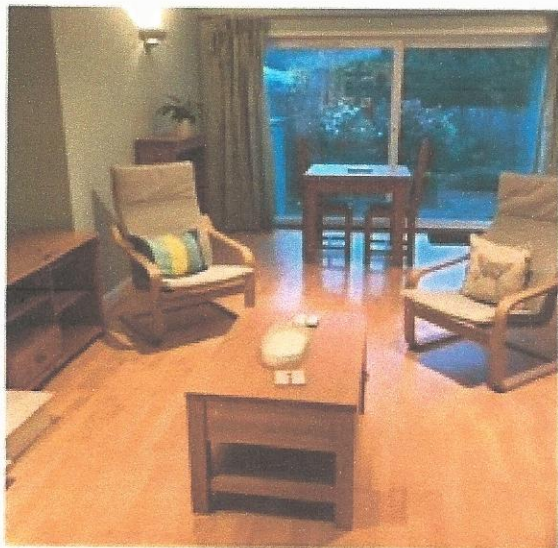
These major works together with outbreaks of covid amongst our volunteer team and the Christmas and new year breaks meant that the property took several months to be completed. The work was mostly carried out by our amazing volunteer team

We are deeply saddened to report that one of our much-loved volunteers and Trustee, David Spencer, passed away suddenly after a short illness in February. David was our champion from the very beginning. He loved being involved and worked tirelessly and with great enthusiasm and much humour, renovating and decorating the property. We all learnt so much from him and are so thankful for all that he did for Thrive. We will miss him greatly.

The property was finally finished at the end of March '2022. Over the previous months we managed to source some lovely items of donated furniture. These together with some generous financial donations and other items donated from our "wish list meant that we were able to quickly furnish the property and make it a home.

We are delighted with the end result.

### All ready for our new residents!





## **VOLUNTEER SUPPORT STAFF**

We currently have 3 volunteer support staff

### **Housing Manager – Pennie Sutton**

Responsible for Housing Management Services provided to the residents.

This includes management, training and oversight of the support team to enable an effective and efficient delivery of the housing project.

Pennie is responsible for the following areas of the housing management service to the residents: Rent collection; Accounting; Arrears recovery; Responsive repairs; Major repairs; Cyclical repairs; Property management; Occupancy management; Occupant participation.

Pennie also provides one to one resident support.

### **Resident Support Team:**

Julie Halse  
Elizabeth Savell

The Resident Support team provide one-to-one support to help residents keep the terms of their licence agreement, work towards the goals that flow out of their support plan and prepare them for sustainable independent living. Our team have a range of skills and experience in mental health support, counselling and mentoring, together with enabling and developing life skills.



### **Financial Review**

During the year the charity has received £9130 in donations and £0 income and has incurred £3258 in expenditure.

### **Reserves**

When operational the Trustees will seek to hold adequate reserves to meet three months operational costs.

### **Risk Management**

The Trustees have reviewed the major risks to which the charity is exposed and have taken steps to mitigate the potential impact of these.

### **Public Benefit**

The Trustees have considered the guidance provided by the Charity Commission regarding public benefit and the work of the charity.

This report was approved by the Trustees on **29/09/22** and signed on their behalf by:



29/09/22.

---

**Penelope Ann Sutton (Trustee)**





CHARITY COMMISSION  
FOR ENGLAND AND WALES

Charity Name  
**THRIVE DEVON**

No (if any)  
**1186254**

## Receipts and payments accounts

CC16a

For the period  
from

Period start date  
01/04/2021

To

Period end date  
31/03/2022

### Section A Receipts and payments

	Unrestricted funds to the nearest £	Restricted funds to the nearest £	Endowment funds to the nearest £	Total funds to the nearest £	Last year to the nearest £
<b>A1 Receipts</b>					
27/09/21 Donation	2,000	-	-	2,000	-
04/10/21 Kingsbridge Family Church Donation	5,000	-	-	5,000	-
Cornelious Fund Donation 05/01/22	1,000	-	-	1,000	-
17/01/2022 Donation	30	-	-	30	-
19/01/2022 Donation	100	-	-	100	-
11/02/2022 Donation	50	-	-	50	-
11/02/2022 Donation	100	-	-	100	-
14/02/22 Donation	150	-	-	150	-
14/02/22 Donation	50	-	-	50	-
15/02/22 Donation	500	-	-	500	-
18/02/22 Donation	100	-	-	100	-
04/03/22 Donation	50	-	-	50	-
	-	-	-	-	-
	-	-	-	-	-
	-	-	-	-	-
	-	-	-	-	-
	-	-	-	-	-
<b>Sub total (Gross income for AR)</b>	9,130	-	-	9,130	-
<b>A2 Asset and investment sales, (see table).</b>					
	-	-	-	-	-
	-	-	-	-	-
<b>Sub total</b>	-	-	-	-	-
<b>Total receipts</b>	9,130	-	-	9,130	-

### A3 Payments

Ace Fire Alarms Installation 22/11/21	635	-	-	635	-
B Wills Chimney Sweep 22/11/21	40	-	-	40	-
G Williams - Ann Gas Inspec 22/11/21	89	-	-	89	-
Ikea household equipment 24/01/22	45	-	-	45	-
Dunelm- Bedding 25/01/22	54	-	-	54	-
Paladium - Manhole Insp Cover 27/01/22	33	-	-	33	-
Victoria Plumbing -Toilet Seat 08/02/22	40	-	-	40	-
The Range -Shower Curtain 11/02/22	10	-	-	10	-
Dunelm- Wall Art 11/02/22	42	-	-	42	-
B&Q Decorating Materials 11/02/22	52	-	-	52	-
British Gas 17/02/22	127	-	-	127	-
SHDC Council Tax 17/02/22	243	-	-	243	-
Jewson Decorating Materials 18/02/22	44	-	-	44	-
Jewson Decorating Materials 22/02/22	70	-	-	70	-
Luscombe - Safety Glass 22/02/22	170	-	-	170	-
HD Hard Kitchen Tiling 28/02/22	200	-	-	200	-
Howdens Fire Doors 02/03/22	571	-	-	571	-
Ikean - Chairs 07/03/22	130	-	-	130	-
D Chapman - Kitchen Fitting 09/03/22	250	-	-	250	-
D Chapman - Kitchen Fitting 10/03/22	50	-	-	50	-
Amazon Carbon Monoxide Alarm 15/03/22	15	-	-	15	-
Argos - Household Items 15/03/22	55	-	-	55	-
Dunelm - Household items 28/03/22	137	-	-	137	-
British Gas 31/03/22	156	-	-	156	-
CCXX R1 accounts (SS)		1			04/10/2022

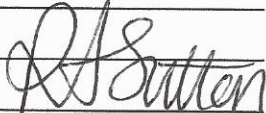
		-	-	-	-
<b>Sub total</b>	3,258	-	-	3,258	-
<b>A4 Asset and investment purchases, (see table)</b>					
	-	-	-	-	-
	-	-	-	-	-
<b>Sub total</b>	-	-	-	-	-
<b>Total payments</b>	3,258	-	-	3,258	-
<b>Net of receipts/(payments)</b>	5,872	-	-	5,872	-
<b>A5 Transfers between funds</b>	-	-	-	-	-
<b>A6 Cash funds last year end</b>	-	-	-	-	-
<b>Cash funds this year end</b>	5,872	-	-	5,872	-



## Section B Statement of assets and liabilities at the end of the period

Categories	Details	Unrestricted funds to nearest £	Restricted funds to nearest £	Endowment funds to nearest £
<b>B1 Cash funds</b>		5,872	-	-
		-	-	-
		-	-	-
	<b>Total cash funds</b>	5,872	-	-
	(agree balances with receipts and payments account(s))	OK	OK	OK
		Unrestricted funds to nearest £	Restricted funds to nearest £	Endowment funds to nearest £
<b>B2 Other monetary assets</b>		-	-	-
		-	-	-
		-	-	-
		-	-	-
		-	-	-
		-	-	-
		-	-	-
<b>B3 Investment assets</b>		Fund to which asset belongs	Cost (optional)	Current value (optional)
			-	-
			-	-
			-	-
			-	-
			-	-
<b>B4 Assets retained for the charity's own use</b>		Fund to which asset belongs	Cost (optional)	Current value (optional)
			-	-
			-	-
			-	-
			-	-
			-	-
			-	-
			-	-
			-	-
<b>B5 Liabilities</b>		Fund to which liability relates	Amount due (optional)	When due (optional)
			-	
			-	
			-	
			-	
			-	

Signed by one or two trustees on behalf of all the trustees

Signature	Print Name	Date of approval
PA Sutton	P A Sutton	04/10/2022
	PA SUTTON	04/10/22

