

Inspire



Trustee Annual Report
11 November 2019 – 31 March 2021

Enfield Town Schools' Partnership (ETSP)

Registered charity number: **1186244**

Report of the Trustees

The Trustees confirm that in developing and reviewing the strategic plan, objectives and activities of Enfield Town Schools' Partnership consideration has been given to the public benefit guidance issued by the Charity Commission.

Background

Enfield Town Schools' Partnership (ETSP) was founded in 2015 by a forward-thinking group of headteachers in Enfield, North London, who could see the benefits for all stakeholders in working collaboratively. It was set up to advance the education of children/young people within member schools (in Enfield, North London), through the provision of services, facilities and activities and to meet the social and emotional wellbeing needs of all the pupils/students within our care.

As the partnership became more established the number of member schools increased and the decision was made to convert to a charitable organisation. The partnership comprises of 1 infant school, 18 primary schools, 1 secondary school and 1 special school. On 11th November 2019 ETSP was established as a Charitable Incorporated Organisation (CIO). Registered charity number: 1186244. ETSP's purposes are charitable and mainly centred on enhancing the education and wellbeing of children and young people within our member schools' communities.

ETSP provides a service to schools which includes income generation for enrichment activities, project management and network management/administration to facilitate collaborative working.

Objectives and Activities

Our Mission

ETSP's initiatives bring our community of schools together to help our children and young people flourish.

Our Vision

To deliver relevant and engaging programmes and events for children and young people to help them thrive, especially those facing additional challenges in their lives. We forge collaboration between our member schools, and partner with other organisations, to identify and respond to our community's needs in a holistic way.

Our Values

- Integrity
- Empowerment
- Excellence
- Community
- Aspiration

Our Objectives

ETSP's objects, as outlined in our Charitable Constitution, are as follows:

- i. Developing collaboration between schools and other educational bodies and the wider community in which they operate, promoting positive community engagement in schools and with families.

- ii. Providing opportunities for disadvantaged pupils through the provision of services, facilities and activities to develop the capacity and skills of parents and carers of children and young people to enable them to engage more with the education of, and to identify and help meet the needs of, the children and young people in their care.
- iii. The provision of training to individuals involved in the education and pastoral care of children and young people in order to equip them with the skills required to deliver such education and to support the social and emotional well-being of the children and young people in their care.

What We Provide

ETSP provides a service to schools which includes income generation for enrichment activities, project management and network management/administration to facilitate collaborative working.

Income Generation

Through our experienced bid writing team we submit funding applications for projects and initiatives which support additional enrichment activities for targeted children and young people and disadvantaged communities. Funding applications have supported mentoring programmes for children and young people, hot meals for the most disadvantaged within the wider community, science and art-based projects, devices for individual children and books for Reception-aged children. We have also written funding applications for individual member schools for library books and gardening equipment to improve outdoor spaces.

Project Management

ETSP designs and delivers programmes from start to finish including procuring/commissioning appropriate service providers to deliver specific projects (including due diligence checks), quality assurance, monitoring budgets for grant awards, monitoring and evaluating project outcomes, and returns to funders. We also design and deliver other events and activities which bring children and young people together and support the community. These events include inter-school competitions and exhibitions for children and young people and lifelong learning courses for the wider adult community.

Network Management and Administration

We manage and facilitate collaborative working groups across member schools to share best practice, improve provision, identify training requirements and plan projects which support targeted children and young people. We also facilitate subject-specific forums to support delivery of ETSP projects. At the beginning of 2021 we launched a borough-wide computing curriculum leads network for all primary and secondary schools in Enfield.

Network meetings include setting agendas, writing minutes, sending invites, organising guest speakers, providing documents and follow up actions and accessing training courses.

We facilitate professional development opportunities for staff to improve the quality of their subject knowledge to support delivery of ETSP projects and the curriculum. The networks and training opportunities are provided so that children and communities have access to the best services possible.

ETSP also develops collaborations between schools and other organisations which support our charitable aims.

Achievements and Performance

(Also see overview on page 6)

Enfield Town Schools' Partnership has managed a range of initiatives throughout the period November 2019 to March 2021. All projects were in line with our charitable aims.

Planned activities

'Fragile'

An inclusive visual arts competition and exhibition for children and young people aged 9 to 14 years old. The exhibition had to be reimagined when the Covid-19 lockdowns were announced and the project moved online.

Scope: over 400 children from 10 member schools.

Outcomes: CPD for staff increased their art knowledge, improved confidence and self-esteem in children, developed children's thinking and problem-solving skills, promoted creativity and expression.

'The Great Debate'

An inter-school debating competition on current affairs for children aged 9 to 11 years. Judged by an independent panel of experts with the finals due to be held in Enfield Council's Chambers. The March 2020 lockdown prevented this from completing.

Scope: 80 children from 11 schools.

Outcomes: improved speaking and listening skills, increased confidence, developed thinking skills and engaged children in current affairs and made news accessible to them.

County Lines workshops

We facilitated a Child Criminal Exploitation (CCE) and county lines presentation for school leaders at all Enfield schools with the intention to deliver a series of county lines presentations to parents and carers across the borough (the Covid lockdown cancelled these plans). We also arranged a weapons' sweep presentation for site managers at all Enfield schools. To support 'at risk' children we delivered County Lines assemblies to year 5 and 6 pupils at 8 schools.

Scope: over 20 school leaders, 10 site managers and over 1,200 children.

Feedback: "a powerful message to the pitfalls and realities of becoming involved in gangs."

'Our Diverse Planet'

Our annual science event to promote and engage children and young people in STEM culminating in an interactive, hands-on science fair with the winning projects awarded prizes. We secured funding to design and deliver this exciting 12-week project over the summer term. The project included a series of interactive workshops from STEM experts to be delivered across 20 schools to engage children, aged 9 to 10 years, and support them to design and plan their STEM inventions. Young ambassadors, aged 13 to 14 years, were recruited to support the younger pupils at a science fair which also included a STEM careers fair for young people aged 14 to 18 years. Unfortunately the whole project had to be cancelled in 2020 as schools had to prioritise time and resources to respond to remote teaching and learning.

Intended scope: 1,485 children and young people, with 243 of this group also participating in the science fair, 40 Primary/Special school class teachers, 20 Primary science leads, 5 Secondary teachers and technicians.

Outcomes: 96% of children and young people 'Strongly Agreed' or 'Agreed' enjoying our previous science fair.

Money workshops

As part of our in-school enrichment activities we facilitated money workshops for Year 5 children. These went ahead at 6 schools but the remainder had to be cancelled.

Scope: 390 children from 6 schools.

Outcomes: Improved understanding of money and basic financial information to help make more informed choices in life.

Feedback: "Thanks for arranging this wonderful and relevant opportunity."

Professional development opportunities for school staff

- Attendance Officer training
- Bereavement training
- Attachment workshop
- Weapons sweep presentation
- Computing/ICT courses

ESOL and lifelong learning classes

Provides opportunities for disadvantaged adults to further their education and employment opportunities as well as giving them the confidence to succeed and achieve more in life. The courses are offered for free and are run by a number of providers including WEA and Barnet & Southgate College. Courses include:

- ESOL (English for Speakers of Other Languages)
- Child and Adolescent Mental Wellbeing (Emotional Health Wellbeing and Mental Health Awareness)
- Positive Parenting
- Introduction to Counselling Skills
- Accredited first aid courses including paediatric first aid
- Qualification to work in a support role in school
- Working as a Community Interpreter
- Turkish Language for Women

Scope: over 100 adults within our member school community and over 500 adults within the wider community

Outcomes: increased confidence, improved language skills, improved employment opportunities, improved wellbeing, widening social networks

Covid response

ETSP had to respond to fast moving changes within our community and the following initiatives arose from those circumstances. As many of our planned activities couldn't go ahead we spent a lot of our time in income generation activities successfully raising grant money for the next financial year.

Easter 2020 play scheme

A collaboration with one school to facilitate co-delivery of a free Easter holiday scheme to children of key workers and vulnerable children as a result of the first government lockdown. Children enjoyed a variety of sports, drama and craft activities.

Scope: 37 children and young people from 6 schools.

Feedback: "[child] really enjoyed her first day and I found the staff so organised and helpful from start to finish." "It is a scary time for all of us but to know the boys are being looked after and enjoying themselves during this period gives me some comfort."

‘Step by Step’

A bespoke mentoring and emotional support programme for children and young people disproportionately affected by the Covid-19 pandemic.

Scope: 39 children received regular mentoring throughout the programme, and a further 116 children benefitted from the group activity sessions.

Outcomes: over 70% of participants reported improved mental health and wellbeing.

‘Virtual Olympics’

Our planned inter-school sports competition was reimagined and became a virtual ‘Olympic’ event for children and young people of all ages and abilities. Each school represented a country, selected by their pupils. Each participant selected their 5 events from 3 categories and took part either from school or home. We also included a reading challenge which was acknowledged by the author David Walliams. Gold, Silver and Bronze were awarded to the top 3 schools with the highest overall medal count.

Scope: 1,056 children and young people from 18 schools,

Outcomes: engaged children and young people who were feeling isolated, promoted positive mental and physical health and wellbeing.

Virtual competitions

A series of interactive quizzes delivered as team events across our schools to promote social interaction, to support with the Year 6 transition to secondary school and to provide some much-needed fun activity.

Scope: Year 6 quizzes – 469 children from 15 schools. Christmas quizzes – 1,080 children from 17 schools and the early 2021 lockdown quizzes – 1,267 children from 21 schools.

Outcomes: improved wellbeing, positive interactions with children from other schools

Year 6 quiz feedback: “Please do this more frequently throughout the year between ETSP schools!” (so we did!).

“Lovely, fun time had by all.”

Inclusive learning

A £5k grant for new laptops, plus the donation of a number of refurbished laptops and tablets, meant we were able to support children and young people who were unable to access digital, online learning.

Community support

Early on in the pandemic we engaged the support of over 100 school staff to help in the assembly and distribution of face visors to frontline healthcare workers. In total we delivered over 3,000 face visors to 70 Enfield care homes, pharmacies and healthcare providers.

We secured and delivered 120 freshly prepared meals each week for vulnerable families across five schools and organised additional emergency food parcels. A £400 grant funded crafts and book bags to engage vulnerable families during lockdown.

A £10K grant funded almost 15,000 freshly prepared meals which were delivered to 3,120 vulnerable Enfield residents over the summer to alleviate food poverty.



14,869

Freshly prepared emergency meals to 3,120 vulnerable Enfield residents over the 2020 summer holiday period



With funding from the local authority, exciting Easter holiday camps were delivered across 4 of our school sites, for children on free school meals



75

Sourced and delivered

3,000+

face visors to over 70 Enfield care homes, pharmacies and healthcare providers in May/June 2020

Community learning

We coordinated delivery of over 30 courses and taster sessions for 100+ adult learners, equating to over 700 student learning hours

700



41

As schools moved online we secured 22 refurbished laptops, plus a grant for new laptops, for children and young people without access to devices at home

Grant income

£25K+

£22K+

Savings in donated goods and resources & collective purchasing

To meet the social and emotional wellbeing needs of the children and young people we work with we delivered a mental health and wellbeing mentoring project specifically for BAME children disproportionately affected by Covid-19

39

540



Reception children at our most disadvantaged schools were provided with book packs to help develop practical skills such as making friends and dealing with change



6,134

Children and young people participated in our enrichment projects



Public Benefit

The Trustees confirm that in developing and reviewing the strategic plan, objectives and activities of Enfield Town Schools' Partnership consideration has been given to the public benefit guidance issued by the Charity Commission.

All of our activities are in support of our objects:

- i. Developing collaboration between schools and other educational bodies and the wider community in which they operate, promoting positive community engagement in schools and with families.
- ii. Providing opportunities for disadvantaged pupils through the provision of services, facilities and activities to develop the capacity and skills of parents and carers of children and young people to enable them to engage more with the education of, and to identify and help meet the needs of, the children and young people in their care.
- iii. The provision of training to individuals involved in the education and pastoral care of children and young people in order to equip them with the skills required to deliver such education and to support the social and emotional well-being of the children and young people in their care.

The Trustees believe that all three of the charity's objectives we undertake improve the lives of our children and young people and make a difference.

The direct benefits that flow from purpose (i) are/include:

Parents/carers and families benefit from a wide range of courses which further their educational and employment opportunities. We have delivered over 30 courses and taster sessions, equating to over 700 student learning hours, for over 100 students. From Spring 2020 these courses were moved online. The benefits from purpose (i) can be evidenced by parents and families' confidence and skills being enhanced through both verbal and email feedback and subsequent courses being fully booked.

Reception children at our most disadvantaged schools were provided with book packs to build their confidence and knowledge about starting school and dealing with change.

Collective purchasing savings were made through collaborations between schools.

Our usual operations had to adapt during the Spring and Summer of 2020 to meet the immediate needs of our community. We sourced and delivered food and essentials parcels to families and schools and topped-up schools' own foodbanks. We worked collaboratively with community organisations and secured funding to enable these groups to continue to prepare and deliver 14,869 emergency meals to 3,120 vulnerable Enfield residents over the summer holiday period. We also sourced and delivered over 3,000 face visors to more than 70 Enfield care homes, pharmacies and healthcare providers. Emails from care homes can evidence the benefits this brought to our key workers as well as promoting positive physical and mental health and wellbeing.

The direct benefits that flow from purpose (ii) are/include:

Children and young people are provided with inclusive, stimulating and fun learning experiences which support and nurture all areas of their learning and development. Enrichment programmes and activities delivered over the last year include Spelling Bees, art exhibitions, debating competitions, dance and wellbeing sessions, music lessons and virtual events and quizzes. Activities which support development of life skills included delivery of financial education workshops and county lines presentations to children at the end of their primary school education.

To ensure no child or young person was left without access to devices at home as school moved online, we secured 22 refurbished laptops plus a grant for new devices for disadvantaged pupils at seven schools.

To meet the social and emotional wellbeing needs of the children and young people we work with we delivered a mental health and wellbeing mentoring project specifically for BAME children disproportionately affected by Covid.

With funding from the local authority we secured delivery of exciting Easter holiday programmes, across 4 of our school sites, for children on free school meals. Christmas hampers and Easter eggs were also delivered to the most vulnerable families within our schools

The direct benefits that flow from purpose (iii) are/include:

Staff benefit from training opportunities which enable them to develop individual capabilities, competences and understanding to support their pupils' learning and development.

We have coordinated delivery of a series of workshops which support 'closing the word gap' as we all recognise vocabulary knowledge is crucial for children's school success. The individual needs and vulnerabilities of each child, where wider environmental factors are a threat to their welfare, also need to be supported so we have managed presentations for staff on child criminal exploitation, county lines and weapons sweeps.

Financial Review

The financial statements have been prepared in accordance with the accounting policies and comply with the charity's Model of Association, applicable laws and requirements of Accounting and Reporting by Charities: Statement of Recommended Practice (Charities SORP FRS102).

The principal source of income are subscriptions from members schools which account for 65% of the charity's income. Our membership fees, paid by schools, are set at a level to ensure the financial viability of the charity ie. at a level that is consistent to access this service and cover the total operating costs, including salaries and additional reserves for the charity.

This ensures sustainability and continuous service to the community we serve as the operating costs are not reliant on grant income. Specific projects and initiatives are funded through grants, donations and fundraising activities.

Additional funding comes primarily from grants (34.5%) secured by our bid writing team.

In common with many other charities, ETSP is unable to recover the VAT that is incurred on purchases of goods and services.

Reserves and Financial Health

The Board of Trustees regularly review the finances, budgets and spend against budget together with a monthly cash flow analysis as part of the effective stewardship of the charity.

Reserves Policy

The trustees consider it appropriate to build up and maintain a reserves budget to cover the partnership in the event of a shortfall of SLA fees for long term viability. This could also be used to fund temporary grant shortfalls and possible costs associated with staffing including redundancy, pension commitments (including withdrawal liability of the scheme) and long-term sickness. The trustees are of the opinion that £20,000.00 would be sufficient to cover potential liabilities in the short term (where there are no redundancy costs). The charity aims to build reserves in the long-term.

Risk Review

The major risks (Covid-19 and reliance on membership fees) to which the charity is exposed have been reviewed and systems are being established to mitigate those risks; funding risk is being addressed through building new partnerships and diversifying sources of funding.

Going Concern

The trustees have reviewed our financial position, taking into account the level of cash reserves, and the systems of financial control and risk management. As a result of this review, the trustees believe that we are well placed to manage operational and financial risks successfully. Accordingly, the trustees have a reasonable expectation that the charity have adequate resources to continue in operational existence for the foreseeable future. Therefore, they continue to support the going concern basis of accounting in preparing the annual accounts.

Structure, Governance and Management

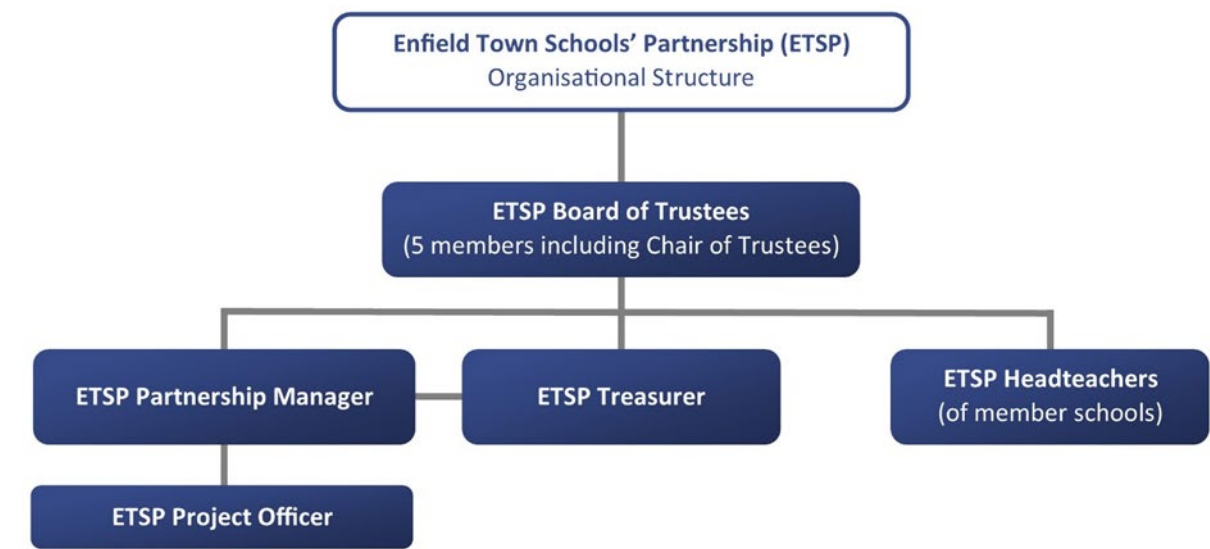
ETSP is a Charitable Incorporated Organisation (CIO). Our governing document is a CIO constitution using the 'association' model. This means we have a wider voting membership who must make certain decisions (such as amending the constitution), will usually appoint some or all of the charity trustees (who will serve for fixed terms), and may be involved in the work of the CIO.

We conducted extensive trustee recruitment in early 2019 and as a result appointed the founding Board of Trustees on 11 November 2019. Trustees, including the Chair, were recruited by open selection and were appointed for a three-year term, renewable for up to a further three years. We will begin the recruitment process for new trustees towards the end of 2021.

The appointing body of the Board of Trustees must consist of at least 3 charity trustees. One third of the charity’s trustees will retire from office at every subsequent annual general meeting. This will be those who have been longest in office since their last appointment or reappointment. Any vacancies arising may be filled by the decision of the members at an annual general meeting or at any time charity trustees may decide to appoint a new charity trustee.

No remuneration or other payments have been made to the trustees of ETSP for their services as trustee board members or for other services provided to the organisation in 2021, 2020 or 2019.

Key Management Personnel



ETSP’s Board of Trustees is charged with ensuring a sharp focus on our mission and values. We ensure that we are financially sound and answerable to headteachers, children and young people within our member schools and to our funding bodies, and make certain that we are compliant with all the relevant laws and regulations. We take seriously our responsibility to safeguard funds entrusted and have a zero-tolerance policy on fraud, bribery and corruption.

The Board delegates day-to-day decision-making and operations to the Partnership Chair, Partnership Vice-Chair and Partnership Manager, known as the key management personnel. The Board of Trustees meets formally three times a year. The key management personnel meet amongst themselves six times per year and with the same frequency with the headteachers of all member schools. An annual away-day is held with the aforementioned stakeholder group to consider ETSP’s strategic direction given the changing context of the educational environment in which we operate. The Chair of Trustees and key management personnel meet regularly to provide strong cohesive leadership and effective coordination.

Membership of the CIO may be open to anyone who is interested in furthering its purposes, and who, by applying for membership, has indicated his, her or its agreement to become a member and acceptance of the duty of members set out in our Scheme of Delegation. A member may be an individual, a representative of a corporate body, a representative of an organisation which is not incorporated or a representative of a Multi Academy Trust (MAT).

Trustee selection method

The appointing body ETSP governing board must consist of at least three charity trustees. Any appointment must be made at a meeting held according to the ordinary practice of the appointing body. Each appointment must be for a term of three years. We currently have five charity trustees and all members give their time voluntarily and receive no benefits from the charity.

The procedure when appointing a trustee is as follows:

- The charity identifies the need for a new trustee either because of a resignation or they have identified a skill which they need to bring in.
- The trustees agree what skills, experience and knowledge is needed and write a short job description and person specification.
- The trustees agree responsibilities and a process for recruitment taking care to comply with any specific requirements set out in the charity's governing document.
- Checks are carried out on candidates:
 - They have not been disqualified from acting as a trustee and they are asked to confirm this in writing.
 - Trustees are asked to sign our Declaration of Interests which advises if there are any potential conflicts of interest.
 - Appropriate checks from the Disclosure Barring Service.
- The new trustee is given a letter setting out their duties and expectations of them which is signed and returned.
- Trustees' details are updated with the Charity Commission.
- Trustees are presented with an information pack, are introduced to the other trustees and any other relevant parties are notified of their appointment.
- The new trustee is welcomed to their first board meeting.

Reference and Administrative details

Charity name:	Enfield Town Schools' Partnership
Charity also known as:	ETSP
The Board of Trustees:	
Hilary Ballantine	Chair of Trustees (<i>retires 11.11.2023</i>)
Jan Bless	Trustee and Headteacher at Prince of Wales Primary School (<i>retires 11.11.2022</i>)
Andrea Cassius	Trustee and Headteacher at Suffolks Primary School (<i>retires 11.11.2023</i>)
Karen Jaeggi	Trustee and CEO of Attigo Academy (<i>retires 11.11.2022</i>)
Stuart Phillips	Trustee and Co-Founder of The FairLife Charity (<i>retires 11.11.2022</i>)
Appointing body:	
	Hilary Ballantine, Jan Bless and Andrea Cassius
Charity Treasurer:	Sharon Rowsell (<i>and School Business Manager at Carterhatch Infants School</i>)
ETSP charity contact:	Emma Kolaru (<i>ETSP Partnership Manager</i>)
Registered office:	ETSP c/o Carterhatch Infant School, Carterhatch Lane, Enfield EN1 4JY
Charity office:	ETSP c/o Bush Hill Park Primary School, Main Avenue, Enfield EN1 1DS
Registered charity number:	1186244
Company number:	CE019518
Auditors:	Brindley Jacob Chartered Accountants, 167 Turners Hill, Cheshunt, Hertfordshire EN8 9BH
Bankers:	NatWest Bank, 43 High Street, Hoddesdon, Hertfordshire EN11 8HE

Declarations

The trustees declare that they have approved the trustees' report above.

Signed on behalf of the charity's trustees

Signature(s) 

Full name(s) Hilary Ballantine

Position Chair of Trustees

Date 16.12.2021



CHARITY COMMISSION
FOR ENGLAND AND WALES

Enfield Town Schools' Partnership

1186244

Receipts and payments accounts

CC16a

For the period from	Period start date	To	Period end date
	11/11/2019		31/03/2021

Section A Receipts and payments

	Unrestricted funds to the nearest £	Restricted funds to the nearest £	Endowment funds to the nearest £	Total funds to the nearest £	Last year to the nearest £
A1 Receipts					
Subscriptions	47,790		-	47,790	-
Grants	25,400	6,800	-	32,200	-
Bank Interest	3	-	-	3	-
Training Receipts	396	-	-	396	-
Donation	34	-	-	34	-
	-	-	-	-	-
	-	-	-	-	-
Sub total (Gross income for AR)	73,623	6,800	-	80,423	-
A2 Asset and investment sales, (see table).					
	-	-	-	-	-
	-	-	-	-	-
Sub total	-	-	-	-	-
Total receipts	73,623	6,800	-	80,423	-
A3 Payments					
Salaries	68,706	-	-	68,706	-
Telephone	45	-	-	45	-
Website	243	-	-	243	-
Insurance	1,464	-	-	1,464	-
Recruitment Costs	45	-	-	45	-
Gifts	50	-	-	50	-
Resources	297	-	-	297	-
Grant Expenditure	22,348	-	-	22,348	-
Activity Expenses	633	-	-	633	-
Sub total	93,831	-	-	93,831	-
A4 Asset and investment purchases, (see table)					
	-	-	-	-	-
	-	-	-	-	-
Sub total	-	-	-	-	-
Total payments	93,831	-	-	93,831	-
Net of receipts/(payments)	- 20,208	6,800	-	- 13,408	-
A5 Transfers between funds	-	-	-	-	-
A6 Cash funds last year end	46,010	-	-	46,010	-
Cash funds this year end	25,802	6,800	-	32,602	-

Section B Statement of assets and liabilities at the end of the period

Categories	Details	Unrestricted funds to nearest £	Restricted funds to nearest £	Endowment funds to nearest £
B1 Cash funds	Current Account	2,600	-	-
	Deposit Account	23,202	6,800	-
		-	-	-
	Total cash funds	25,802	6,800	-
	(agree balances with receipts and payments account(s))			


	Details	Unrestricted funds to nearest £	Restricted funds to nearest £	Endowment funds to nearest £
B2 Other monetary assets		-	-	-
		-	-	-
		-	-	-
		-	-	-
		-	-	-
		-	-	-

	Details	Fund to which asset belongs	Cost (optional)	Current value (optional)
B3 Investment assets			-	-
			-	-
			-	-
			-	-
			-	-

	Details	Fund to which asset belongs	Cost (optional)	Current value (optional)
B4 Assets retained for the charity's own use			-	-
			-	-
			-	-
			-	-
			-	-
			-	-
			-	-
			-	-
			-	-

	Details	Fund to which liability relates	Amount due (optional)	When due (optional)
B5 Liabilities	Salaries		750	
			-	
			-	
			-	
			-	

Signed by one or two trustees on behalf of the trustees

Signature	Print Name	Date of approval
	MRS. H.J. BALLANTINE	25.11.2021



Section A

Independent Examiner's Report

Report to the trustees/
members of

Charity Name
Enfield Town Schools' Partnership

On accounts for the year
ended

31 March 2021

Charity no
(if any) 1186244

Set out on pages

3 and 4

Responsibilities and
basis of report

I report to the trustees on my examination of the accounts of the above charity ("the Trust") for the year ended 31/03/2021.

As the charity's trustees, you are responsible for the preparation of the accounts in accordance with the requirements of the Charities Act 2011 ("the Act").

I report in respect of my examination of the Trust's accounts carried out under section 145 of the 2011 Act and in carrying out my examination, I have followed all the applicable Directions given by the Charity Commission under section 145(5)(b) of the Act.

Independent
examiner's statement

I have completed my examination. I confirm that no material matters have come to my attention in connection with the examination which gives me cause to believe that in, any material respect:

- the accounting records were not kept in accordance with section 130 of the Charities Act; or
- the accounts did not accord with the accounting records; or
- the accounts did not comply with the applicable requirements concerning the form and content of accounts set out in the Charities (Accounts and Reports) Regulations 2008 other than any requirement that the accounts give a 'true and fair' view which is not a matter considered as part of an independent examination.

I have no concerns and have come across no other matters in connection with the examination to which attention should be drawn in this report in order to enable a proper understanding of the accounts to be reached.

Signed:

Date:

26/11/2021

Name:

Maurice William Brindley FCA

Relevant professional
qualification(s) or body
(if any):

ICAEW

Address:

167 Turners Hill Cheshunt Herts EN8 9BH

Section B

Disclosure

Only complete if the examiner needs to highlight material matters of concern (see CC32, Independent examination of charity accounts: directions and guidance for examiners).

Give here brief details of any items that the examiner wishes to disclose.

--



CHARITY COMMISSION
FOR ENGLAND AND WALES

Enfield Town Schools' Partnership

1186244

Receipts and payments accounts

CC16a

For the period
from

Period start date
11/11/2019

To

Period end date
31/03/2021

Section A Receipts and payments

	Unrestricted funds to the nearest £	Restricted funds to the nearest £	Endowment funds to the nearest £	Total funds to the nearest £	Last year to the nearest £
A1 Receipts					
Subscriptions	47,790		-	47,790	-
Grants	25,400	6,800	-	32,200	-
Bank Interest	3	-	-	3	-
Training Receipts	396	-	-	396	-
Donation	34	-	-	34	-
	-	-	-	-	-
	-	-	-	-	-
Sub total (Gross income for AR)	73,623	6,800	-	80,423	-
A2 Asset and investment sales, (see table).					
	-	-	-	-	-
	-	-	-	-	-
Sub total	-	-	-	-	-
Total receipts	73,623	6,800	-	80,423	-
A3 Payments					
Salaries	68,706	-	-	68,706	-
Telephone	45	-	-	45	-
Website	243	-	-	243	-
Insurance	1,464	-	-	1,464	-
Recruitment Costs	45	-	-	45	-
Gifts	50	-	-	50	-
Resources	297	-	-	297	-
Grant Expenditure	22,348	-	-	22,348	-
Activity Expenses	633	-	-	633	-
Sub total	93,831	-	-	93,831	-
A4 Asset and investment purchases, (see table)					
	-	-	-	-	-
	-	-	-	-	-
Sub total	-	-	-	-	-
Total payments	93,831	-	-	93,831	-
Net of receipts/(payments)	20,208	6,800	-	13,408	-
A5 Transfers between funds	-	-	-	-	-
A6 Cash funds last year end	46,010	-	-	46,010	-
Cash funds this year end	25,802	6,800	-	32,602	-

Section B Statement of assets and liabilities at the end of the period

Categories	Details	Unrestricted funds to nearest £	Restricted funds to nearest £	Endowment funds to nearest £
B1 Cash funds	Current Account	2,600	-	-
	Deposit Account	23,202	6,800	-
		-	-	-
	Total cash funds (agree balances with receipts and payments account(s))	25,802	6,800	-

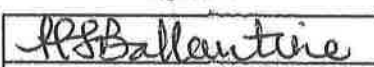
	Details	Unrestricted funds to nearest £	Restricted funds to nearest £	Endowment funds to nearest £
B2 Other monetary assets		-	-	-
		-	-	-
		-	-	-
		-	-	-
		-	-	-
		-	-	-

	Details	Fund to which asset belongs	Cost (optional)	Current value (optional)
B3 Investment assets			-	-
			-	-
			-	-
			-	-
			-	-

	Details	Fund to which asset belongs	Cost (optional)	Current value (optional)
B4 Assets retained for the charity's own use			-	-
			-	-
			-	-
			-	-
			-	-
			-	-
			-	-
			-	-

	Details	Fund to which liability relates	Amount due (optional)	When due (optional)
B5 Liabilities	Salaries		750	
			-	
			-	
			-	
			-	

Signed by one or two trustees on behalf of the trustees

Signature	Print Name	Date of approval
	MRS. H.J. BALLANTINE	25.11.2021