



# ST SAVIOUR'S

FINSBURY PARK

## The Parochial Church Council of the Ecclesiastical Parish of St Saviour Hanley Road

Reports and Financial Statements  
1 January - 31 December 2024

Diocese of London  
Charity Registration 1185858  
[www.stsaviours.church](http://www.stsaviours.church)



crucified  
death to life  
crucified

We sing Christ and Ch  
In You, we're raised fro  
We sing Christ and Ch  
Hallelujah, hallelujah



# Contents

- 4 Legal and Administrative Information
- 5 Report of the Parochial Church Council
- 21 Independent Examiners Report to the Parochial Church Council
- 23 Statement of Financial Activities
- 24 Balance Sheet
- 32 Notes to the Financial Statements



# Legal and Administrative Information

**Charity Name:** The Parochial Church Council of the Ecclesiastic Parish of St Saviour Hanley Road ("PCC")

**Charity Registration:** 1185858

**Principal Address:**

St Saviour's Church is situated on Hanley Road, London N4 3DQ. It is part of the Stepney area of the Diocese of London within the Church of England. The correspondence address is St Saviour's Vicarage, Hanley Road, London N4 3DQ.

**The Governing Document:**

Parochial Church Council Powers Measure (1956) as amended and Church Representation Rules.

## Objectives:

The primary objective of St Saviour's PCC is to be a church alive in God's love to serve the city. St Saviour's PCC has the responsibility of co-operating with the Incumbent, the Revd Matt Seymour, in promoting in the ecclesiastical parish the whole mission of the Church: pastoral, evangelistic, social and ecumenical. It also has maintenance responsibilities for the church buildings of St Saviour's.

## Members of the PCC:

**Church Leaders:** The Revd Matthew Seymour (Incumbent)  
Anna Seymour

**Curates:** The Revd Rebecca Daynes  
The Revd Matt Tinsley (until July 2024)

**Licensed Lay Minister:** Myna Jones

**Churchwardens:** Ayozie Pollendine  
Heidi Dudas

**Elected members:** **October 2019**  
Grace Haastrup (re-elected May 2022)  
Timothy Kenson (re-elected May 2022)  
Anna Shkalla (re-elected May 2022)

**October 2020**  
Nathan Hosker (re-elected May 2023)

**May 2023**  
Mark Boyd  
Ben Chan  
Ed Chan Stroud  
Lucinda Jones

**May 2024**  
Jane Goldring  
Eillis Lui

**Treasurer:** Aaron Rodewald

**Secretary:** Daniel Allwood

**Employees of the PCC:** Daniel Allwood (Operations Director)  
Chris Bentley (Youth Lead)  
Amy Dolley (Worship Lead)  
Chloe Spencer (Dance)  
Sarah Ward (Operations Assistant)  
Hannah Wolak (Kids and Families Lead)

**Ordinand:** Chris Brees

**Finance Manager:** Aaron Rodewald, Rodycloud Consulting

**Bankers**  
NatWest  
11 Upper Street  
London  
N1 0PQ

**Independent Examiners**  
Knight Goodhead  
7 Bournemouth Road  
Chandler's Ford, Eastleigh  
Hampshire  
SO53 3DA





# Report of the Parochial Church Council

The Parochial Church Council of the Ecclesiastical Parish of St Saviour Hanley Road ("PCC") submits its report and the financial statements of the PCC for the year ended 31 December 2024. The financial statements have been prepared in the format prescribed by the Statement of Recommended Practice: Accounting and Reporting by Charities (SORP2015 (FRS102)) and the Financial Reporting Standard 102. The legal and administrative information set out earlier in this document forms part of this report.



# 1. Structure, Governance and Management

## 1.1 Trustees

The PCC is a corporate body established by the Church of England. The method of appointment of PCC members is set out in the Church Representation rules. All church attendees are encouraged to register on the Electoral Roll and to stand for election to the PCC. Members of the PCC are either ex officio or elected by the Annual Parish Meetings in accordance with the Church Representation Rules and are trained at the first meeting on how to participate.

## 1.2 Electoral Roll

The Electoral Roll that was compiled in May 2024 stood at 135.

The worshipping community and congregation of St Saviour's continued to grow throughout 2024.

## 1.3 Risk Management

The PCC has a risk management strategy that comprises:

- An annual review of the risks that the PCC may face;
- The establishment of systems and procedures to mitigate those risks;
- The implementation of procedures designed to minimise any potential impact on the PCC should those risks materialise.

# 2. Activities & Strategies

The PCC has given due regard to the Charity Commission's guidance on public benefit. The PCC believes that by promoting the Christian faith it provides a benefit to the public by:

- Providing facilities for public worship, pastoral care and spiritual development, both for existing church members and for anyone who wishes to benefit from what the church offers; and

- Promoting Christian values, and service by members of the church in and to their communities, to the benefit of individuals and society as a whole.

## 3. PCC

The PCC has 12 elected members including 2 churchwardens, plus Matthew Seymour (Incumbent and Chair), Anna Seymour, curates Rebecca Daynes and Matthew Tinsley (until July), and Licensed Lay Minister Myna Jones. Employees Aaron Rodewald, Treasurer and Daniel Allwood, Secretary, also attend the PCC without voting rights.

The PCC met four times during the year with good attendance (average 80%). Committees met between meetings and reports of their findings were received by the PCC and discussed where necessary. Minutes and attendance are recorded at each PCC meeting. The PCC complies with the duty under section 5 of the Safeguarding and Clergy discipline measure 2017 in relation to having due regard to the House of Bishops' guidance on safeguarding children and adults.



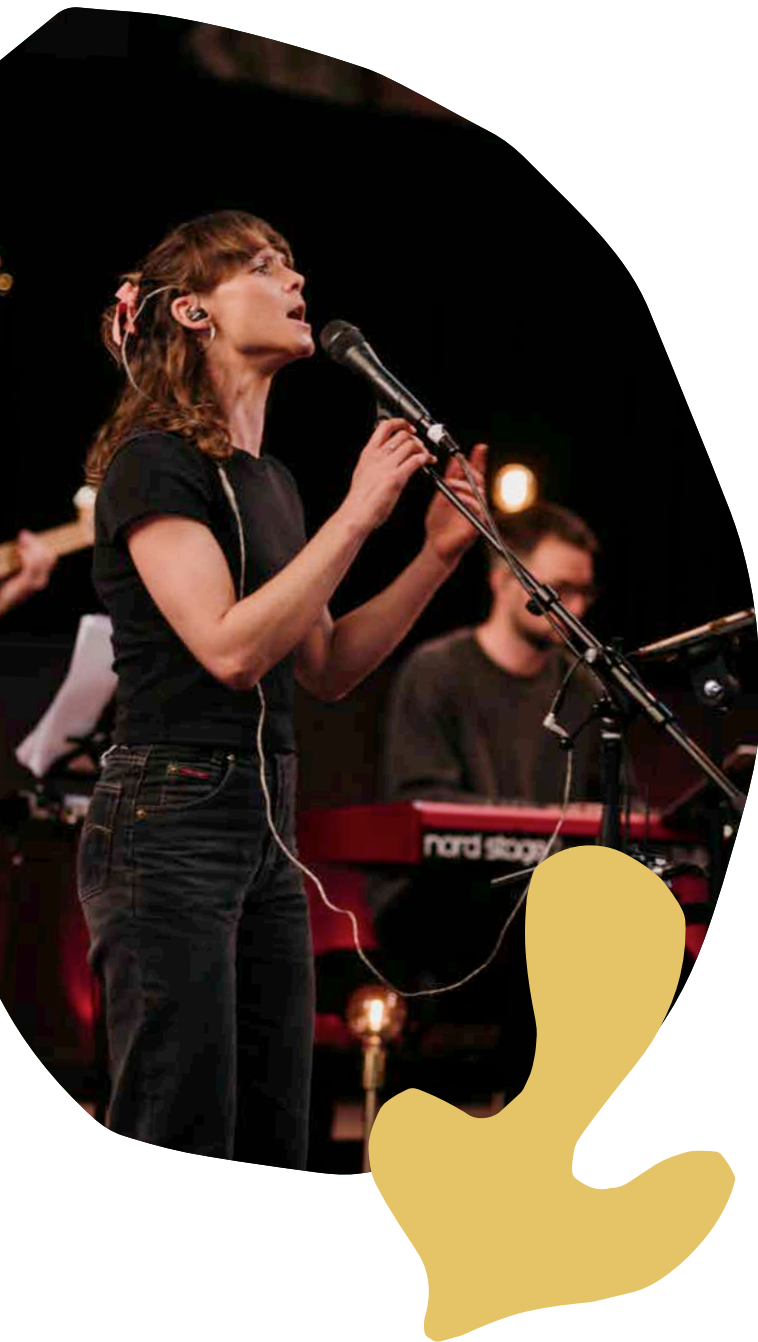


## 4. Parish Life and Ministry

### 4.1 Sunday services

On Sundays we gather to worship Jesus' beautiful name, to lean into Jesus' living word, to practice ministry in the power of the Spirit, and to create a space for Jesus' radical hospitality where outsiders are welcomed in and strangers become friends. 2024 has been a busy year, launching Bubble Church, a monthly Sunday service aimed at serving local families, with younger children, who are unfamiliar with 'ordinary' church. It has been exciting to see some crossover beginning to take place between our midweek ministries, especially Sound Explorers, and Bubble Church. A hearty shout-out to all who've helped make this happen by serving on the Bubble church team (special shout-out to the puppeteers), and a huge well-done to Bex whose vision to see this ministry emerge has been remarkable. Over the summer, we had the privilege of sending two beloved members of the St Saviour's team, the wonderful Matt+Laura Tinsley, to St Johns Upper Holloway to begin a new and exciting chapter

in the story of that church. We're all praying for them, and rooting for them, on this new adventure. In the Autumn, we were delighted to welcome four incredible new team members: Hannah (kids+families), Chris (youth), Sarah (operations), and Amy (worship). The effect has been to add what has felt like rocket boosters on the church: such life, faith and passion for Jesus. We are so blessed to have them. Alongside all of this, the Sunday service culture at St Saviour's in 2024 has continued to tell a remarkable story of high levels of commitment, faith and love across the church, with a significant percentage of the St Saviour's family offering their time and energy to serve on team: cafe-welcome, duty, visuals-audio, livestream, kids+families, youth, prayer ministry, Bubble church or the huge number of small, often unseen, ways everyone hosts the space. It's amazing. Sunday attendance has grown this year, regularly hitting 150 adults and 40+ kids, with a growing atmosphere of faith in Jesus. It's been so encouraging to see such steady growth across the congregation, welcoming new people every month. Jesus is alive and it is a joy to live in the light of His life. Bring on 2025!



In 2024, after completing his curacy at St Saviour's, we were sad to say goodbye to Matt Tinsley who left very big boots to fill for the incoming Worship & Production Lead. Matt is now doing an incredible job as vicar of St. John the Evangelist in Upper Holloway. Amy Dolley stepped into the Worship & Production Lead role at St Saviour's in late August 2024.

The worship and production team continued to grow throughout 2024, with more volunteers serving in roles including worship leading, vocals, electric guitar, sound engineering, camera, and visuals.

In October, we had a well-attended team night which was a significant moment for Amy to introduce herself to the team, explain some practical changes, and share her vision for worship at St Saviour's. All our worship leaders gathered in November to build further on these conversations. Similarly, this felt like an inflection point in the team, where friendship was strengthened, and our worship leaders were united in a shared vision for God's kingdom breaking out through worship at St Saviour's.

Christmas was a particular highlight. In the week leading up to the carol services, some of our worship team played carols and worship songs at Finsbury Park station, while handing out flyers promoting our carol and evening services. This was a huge success, with TfL giving us permission to position ourselves in the station and members of the congregation engaging in lots of conversations about church with commuters. Several people have since turned up to St Saviour's on a Sunday who have told us they discovered our services from our flyers.

Our Christmas carol services were sensational! The team pushed the boundaries when it came to people bringing their creativity and gifting. So much of this was possible with the incredible work of Mark and Tom Diamond, who both poured a lot of time, energy, and thought into the services. The various creative elements of the service – including the new carol arrangements, video content, and poetry – alongside the sermon, formed a solid backdrop for a service that prioritised giving glory to God and welcoming in non-churchgoers.

## 4.2 Worship Team Report

Our foundational value for worship at St Saviour's is for Jesus to be at the centre, for us to seek God's will in everything we do, and prioritise honouring His name in worship before anything else. We worship in all circumstances, and in the knowledge that we were designed to do so, holding firm to the belief that engaging in worship will lead us to discover our true identity in God.

The three key values surrounding this core vision of Christ-centred worship at St Saviour's are i) dethroning idols, ii) uniting the church, and iii) serving Finsbury Park.







Looking ahead, a priority for our team is to encourage greater freedom in worship, both among our volunteers, and resultantly within the wider congregation. We have started to see some breakthrough in this area, including among our worship leaders who are increasingly singing out in the Spirit and hosting moments of spontaneous praise during our worship sets. But to push into this even further, the staff team are praying and fasting for greater levels of freedom. Amy has begun to host various instrumentalist nights to help educate, empower, and encourage volunteers to lead the congregation into moments of worship with their specific gifting. The new evening service is designed to create space for an extended time of worship and prayer ministry, and the hope is that our team and congregation will fall more in love with Jesus as we provide them with more opportunities to meet with Him and learn from His Word. Our prayer is that this will overflow into the way they lead worship and encourage the congregation to press into deeper encounter with our Heavenly Father.

### 4.3 Children's and Youth Ministry Report

We've had another exciting year of growth among the kids, youth and families of St Saviour's! We have up to 40 3-11 year-olds in Kids Church each week. Our vision is for the kids to Love God, Love each other and Love the world. We continue to pray for Fun, Fire and Friendship as we read and discuss Bible stories, pray and worship together, play games, do gardening and do some incredible topic-themed crafts. Increasing numbers means we're now using the new community room of the vicarage, the barn and garden for Kids Church. It's been wonderful to see faith growing in the kids, a hunger for the Bible and sense of curiosity and of fun in Kids Church, and community amongst the Kids and Youth Team and St Saviour's families.

We have hosted various and well-attended Kids events, in particular a Light Party as a fun Halloween alternative and a Kids Christmas Party during the Christmas carol services.



These events really grew this year since Hannah and Chris took over and we had up to 200 people at the Light Party and 160 at the Christmas party. A lot of these people came from Sound Explorers and Dance which is very exciting.

Lots of more babies have arrived this year and we've had the joy of welcoming them into the church family with several baptisms and dedications. Families with babies and under-threes have enjoyed using the newly finished Organ room space during Sunday services as the crèche.

We're continuing to explore new ways to gather as the whole church family on Sundays such as creative "Church Family Services" to begin the new term together, fun all-age services at Easter and Christmas, all-age songs at the beginning of the church service every week, and bring-and-share lunches and BBQs after church in the garden in the summer months.

---

## 4.4 Youth

Over the past year, we've seen great growth in the youth programs at St. Saviour's. Both the Monday Youth Group and the Football at the Cage have grown, with more young people getting involved, as well as more team members stepping in to help.

In the Monday Youth Group, we've seen deeper connections forming between the teenagers, and they've started asking more meaningful questions about their faith and how to share it with their friends. We've been covering the basics of faith, like how to read the Bible, how to pray, and how to listen for God's voice. As we move forward, we'll be diving into apologetics and helping the teens tackle some of the big questions about life. We've also had some joint social events, which have given the teenagers at St. Saviour's a chance to meet others their age.

On the outreach side, the success of the Light Party and Christmas Party helped us connect with more local teenagers. Some have joined the Monday Youth sessions, though not many have stayed long-term. In the coming year, we're working on creating better opportunities and pathways to help teenagers from the local



estates get more involved and connected with the church. We're looking forward to some exciting plans for 2025, including a potential for a youth weekend away and more social events.

---

## 4.5 Hubs

Hubs have been vital as St Saviour's continues to grow to provide mid-week discipleship and community for the majority of the congregation of St Saviour's.

Hubs meet in homes across Finsbury Park and beyond on weekday evenings as well as a morning online Hub run especially for those unable to meet in person. Hubs have used a variety of scripture resources this year, in particular notes which tracked with the Redemption sermon series (in preparation for Easter) and the Isaiah sermon series (in

preparation for Christmas). Thanks to Harry Wilde and Chris Brees for their work on these brilliant resources.

Every Hub leader has had safeguarding training and is aware of our pastoral care support structures if a crisis should arise. We are grateful to Clare Manuel for her support and assistance in this as our Designated Safeguarding Officer.

The staff team has supported Hub leaders through Hubs resources, visiting Hubs, termly Hub leader meetings and being available to leaders whenever needed.

Our huge thanks to all the Hub Leaders past and present for their leadership, hard work, love and care for all those in their Hubs.

---

## 4.6 Dwell

We have continued with our micro-group discipleship Dwell Groups this year, with the aim of providing deeper fellowship, encouragement and accountability. The number of groups has continued to grow with the church, and whilst we've not pushed this ministry directly, through Hubs and word-of-mouth it has grown organically. This has been supplemented by two new reading plans - Redemption and Incarnation (for Lent and Advent respectively) - that have encouraged deeper engagement with Scripture in a thematic way. These have had good take-up throughout the life of the church, particularly because they were twinned thematically with the preaching series for the two seasons.

---

## 4.7 Morning Prayer

Morning prayer is a space at the heart of the church where we commit the needs of the church to the Lord in prayer and intercede for the Kingdom of God to be made known in Finsbury Park as in heaven. It happens online so to make it accessible to those who wouldn't otherwise be able to attend, and we're massively grateful to those who lead these times of prayer: Myna, Grace, Daphne and Jeremy, Christine, Mark, Andrew and Jo. Their passion for Jesus is amazing and adds fuel to the fire of all God's doing by His Spirit at St Saviour's.

---

## 4.7 Weddings, Funerals and Baptisms

St Saviour's hosted two weddings and five baptisms over 2024. More weddings and baptisms are booked at St Saviour's for the year ahead, which is exciting!

---

## 4.8 Community

### 4.8.1 Alpha

Alpha is a series of dinners and discussions that freely explore the Christian faith, the person of Jesus and what this could mean for them. It's especially designed for any who are exploring Christianity for the first time or new to the church looking to deepen their faith and connect in. St Saviour's ran two well-attended Alpha courses in 2024 with guests going on the exciting journey towards faith in Jesus. Several of our guests have since joined our 'Foundations in Faith' midweek group to continue the journey, as well as becoming part of the church: what a blessing, what a gift! A huge thank you to those who served on Alpha by cooking meals, setting up and packing down, hosting discussion groups, praying, and so much more. There was a real team spirit, which made it such fun to be a part of. Our next Alpha course runs in the Autumn and we're actively seeking to build the biggest Alpha team St Saviour's has put together so far. We'll be in touch with more details of how to sign up but, just as a heads up, we're looking for anyone who falls into any of the following categories:

- Discussion group leader: you're confident you can gather a group of friends/colleagues/neighbours AND you'd be interested to lead the discussion group
- Inviting 'monster': you're confident you can gather a group of friends/colleagues/neighbours and you want to be in the group BUT you'd prefer not to lead the discussion
- Cooking team: you'd be able to commit to cooking a main meal for our Alpha guests for at least one of the ten Alpha evenings planned for the course
- Clear up team: you'd be up for committing to help clear up for at least one Alpha evening by doing the dishes and cleaning the kitchen.





#### 4.8.2 Break Bread

Break Bread has become an established part of the life and witness of St Saviours, creating bonds of family across the community by eating together. It's a means to connect and share love with anyone who would otherwise be alone for lunch. As Jesus came to connect the disconnected and did not eat alone, so we are intentional in using hospitality to counter isolation and disconnection in Finsbury Park. At Break Bread there is such a thing as a free lunch - it's on a Friday, twice a month! On a deeper level, it's an introduction to the wider Church family and the life of the Kingdom. We consistently fill two tables with 15 people and our relationships continue to grow and deepen as we keep breaking bread together.

#### 4.8.3 Sound Explorers

Wednesdays in term times are our busiest midweek day at St Saviour's; it is wonderful to welcome so many different people from the local community to St Saviour's. We welcome up to 50 parents and carers and their babies and preschool children to "Sound Explorers", an amazing free Stay and Play and Music group, which Jenny Baker runs. During Sound Explorers we serve fresh coffee, tea and other refreshments. It's been exciting to see numbers continue to grow and an increasing sense of community among the parents and carers who come. People often articulate how much they enjoy coming into the church space and how it "feels different" to other groups they attend. Some parents heading back to work have changed their working pattern to be able to come on Wednesdays because Sound Explorers is the highlight of their week! We're also starting to see some of the parents and carers being open to being prayed for and coming along to other events at St Saviour's, in particular the Light Party and Christmas services. We have one parent who has been prompted to come to church since the birth of her child and is now wanting to get baptised. A huge thanks to Jenny for running such an excellent music group at the end of the session and for her pastoral care for the children and families who come along, and to Christine Ng who helps with the practical running of the group and has such a heart for the adults and children who come.



#### 4.8.4 Dance

On Wednesday afternoons, we welcome local children and their families to ballet and jazz, classes. During the dance classes, Chris Bentley, our youth leader, leads the youth in games in the barn or in the Organ room. A lot of these dance classes that started small are now full, which is exciting growth. At Christmas each year the children work towards performing a show in December - "Tales of Hope and Peace" this year! Our huge thanks to Chloe and Hannah not only for their wonderful classes but their love, care and prayer for the children and families who come. The front/stage area and organ room of the church is used for classes, while the entrance/back of the church becomes a community space for families to use before and after classes. We offer a free home-cooked dinner for any families who would like it. Our ongoing and huge thanks go to Dena Dease and Christine Ng, who shop, cook, serve, clean up and host the families to make this possible each week.

#### 4.8.5 English Language Classes

English Language Conversation Classes launched in February, aiming to meet the needs of those in our parish and beyond with English language needs, including those seeking asylum and refuge. The ministry is led by the brilliant Mark Winterburn, and has built up an incredible

team of volunteers who serve on a Thursday evening. The team brings a sense of community and home to those who come along to the classes, along with teaching and activities that help people practice their language skills. Some beautiful relationships have blossomed from this, with volunteers getting to know attendees and even visiting them when they are moved to different parts of the country. The team has been blessed by learners, who have shared their lives and sometimes their cooking with us! Christmas social was a particular highlight of the year.

#### 4.8.6 Gospel Choir

The Gospel Choir enjoyed another great year, with the choir growing deeper in community with one another. There was one member who came to faith, and lots of encouraging stories of the choir being a great source of comfort to its members. There were three performances with a jam-packed Winter Gig, the "Choir Fest" performance in the spring, where two other choirs joined the gospel choir, and the all-age family workshop in the summer, with children and adults singing together and enjoying time in the sunny church garden. Once again we are truly grateful to Beth Allwood, who leads the choir so brilliantly, and to Mark Diamond who helps make all the performances happen with his valuable tech support.





#### 4.8.7 Football Coaching

The football coaching initiative for 11-16 year olds, Coaching at the Cage, led by Dan Clarke and Josh Tomaz-Carter-Merrills, has gone from strength to strength this year. The group of incredible volunteers provide a weekly football coaching session on a Monday evening at the five-a-side pitch on the Crouch Hall estate on Hanley Road. The sessions involved coaching drills, a game, and a short reflection on faith, life and the Bible. Highlights from the year include getting the runner-up spot at a tournament in the summer, the BBQ and prize-giving ceremony held in July at the church, and



the end of term social in December where there was a great atmosphere among the boys. This ministry is an exciting expression of the life of the church, and is drawing the local community into a life of faith in a tangible and compelling way.

#### 4.8.8 Netball and Football

This year has also seen another community sports ministry continue - Women's Netball - to complement the Wednesday Night Football that has been going for over ten years (masterminded by Dan Allwood). Netball has continued this year - led by Ruth Betteridge - and has become a place of fun, safety and affordable access to sport for members of the church community and beyond. Equally, Wednesday night football continues to thrive, with the majority of players being from outside the church, and it provides a consistent community for many people who might be on the fringes of church life.

#### 4.8.9 Fellowship Fund

The Fellowship Fund continues to support people in the congregation and local area when we become aware of need. Amongst other things it has supported people in fuel poverty, struggling with other bills or while out of work. It has also been used to help people in mental & physical health crises, equip single-parent families in temporary accommodation and bless people on their own during the Christmas period. Huge thanks to those who have given so generously to the Fellowship Fund.

#### 4.8.10 Wildfires

Wildfires is a three-day festival where we gather together with other churches to worship Jesus, raise faith, and have loads of fun together. This is an experience that builds faith, friendship and community like few others! We had an amazing time together as a church in 2024, with 33 adults and 22 kids in the St Saviour's family joining 4,000 Christians from across the nation to worship, pray and contend for a fresh awakening. Labs (guest speaker seminars) happened each afternoon, as well as jam-packed children and youth programmes, student study spaces and more.





## 5. Buildings and Garden

### 5.1 Organ Room

The main focus in 2024 to the organ room was the access ramp. This has now been installed making the room fully accessible from both the church and the garden. The finishing touches were also completed inside the organ room, installing the accessible toilet and storage cupboards, leaving only the final phase of heating to be completed in 2025. Once again a huge thanks to Derek and Darwin, for all their hard work, and Matt Cox for his expertise.

### 5.2 Drainage Project

Having received a generous grant from Cloudesley we were able to service all the drainage below the church, and make major repairs to the drain servicing the new toilet in the organ room. This also included adding a new inspection chamber for this line at the front of church.

### 5.3 Vicarage

Work was done in the vicarage to separate the upstairs into a 3 bed flat, and create an independent community space at the back of the building, including a new accessible toilet and foyer entrance. This will enable the church to use the space more for activities including Sundays kids work, and a Growing Hope clinic starting in 2025.

### 5.4 Garden

The garden team continued their hard work keeping the garden in a good condition for welcoming all our outdoor activities and events. The kids groups enjoyed planting in the vegetable boxes, and we even enjoyed home-grown potatoes as a side to one of the summer BBQs. A special mention goes to Claire Goldring, Alan Davies, Ellie Davies, Alex Henry and Dan Clarke, who were regulars on the Sunday garden team.



## 6. Safeguarding report

At St Saviour's, we recognise that we have a duty to ensure the safety of children and vulnerable adults<sup>[1]</sup> who come into contact with us. This includes recognising that there are those who are determined to harm and who deliberately seek out groups or organisations where they can meet children or other vulnerable people. The Church can attract these people.

The Church of England's approach to safeguarding continues to be in the public eye, with the Makin Review published in November 2024 followed by the resignation of the Archbishop of Canterbury in the light of criticisms in the Review. Following this, the London Diocese safeguarding team called a helpful meeting of safeguarding officers. There was a high degree of confidence about safeguarding processes, procedures and the level of support provided at Diocesan level. The PCC shares this confidence and continues to be grateful to the Diocesan Safeguarding team for the information and practical guidance they provide, and for their responsiveness to queries.



The PCC also takes the view that our own procedures and processes are in a good place and comply with CoFE requirements. There is always ongoing work to be done to ensure that St Saviour's is a place where everyone feels they are in a safe space to be themselves and express themselves. Our approach to safeguarding is in line with the House of Bishops' guidance, and we're guided by the London Diocese Safeguarding Team. The PCC is responsible for safeguarding.

We are supported in this role by Church Safeguarding Officer (Clare Manuel) and the Operations Manager to ensure the St Saviour's is compliant with safeguarding standards and mainstreams a safeguarding culture in our day-to-day operations. Any safeguarding concerns should be reported to Clare.

## 7. Financial Review

---

### 7.1 Financial Activity and Financial Position

The PCC's main sources of funding are the free will offerings of church members and grants from third parties. The PCC is very grateful to Cloudesley, Garfield Weston, ISTD, KXC, Porters, Church Commissioners and the LDF for funds committed during the year.

The Statement of Financial Activities and Balance Sheet can be found on pages 16 and 17. The balance sheet shows total net assets of £325,877.

Included in total funds are amounts totalling £162,075 which are restricted. These monies have either been raised for, and their use restricted to, specific purposes, or they comprise donations subject to donor-imposed conditions. Full details of these restricted funds can be found on page 25 together with an analysis of movements in the year.

### 7.2 Reserves Policy

The PCC has adopted a policy whereby £45,000 of non-discretionary committed expenditure is to be reserved. At 31 December 2024 the PCC had net free reserves of £67,375 as follows:

**Total reserves:** £325,877  
**Less: Unrestricted fixed assets:** £96,427  
**Less: Restricted funds:** £162,074  
**Free Reserves:** £67,376  
**Free Reserves requirements:** £30,000

### 7.3 Investment Policy

The PCC currently places spare funds on bank deposit.

### 7.4 Grants Awarded Cloudesley

---

We are so grateful once again for the continued assistance of Cloudesley. Without the help of this amazing charity, we wouldn't have been able to



fix the leaking roof or continue work on our new garden room, or to make the urgent structural fixtures to the hall. In 2024 Cloudesley awarded £10,000 towards the access project to the organ room, £30,000 towards the drainage project and £12,392 towards the continued AV project.

### **Garfield Weston**

---

We are hugely thankful for the £20,000 grant from Garfield Western for our project restoring the Hall.

### **Imperial Society of Teachers of Dancing**

---

We continued to receive a grant from the ISTD for Dance lessons which take place on Wednesday afternoons and welcome around 50 kids from the local community.

### **King Cross Church**

---

KXC kindly gave the ESOL (English for Speakers

of Other Languages) classes a grant of £1,500. ESOL offers free classes on Thursday evenings.

### **Porters**

---

Once again Porters have generously supported us by contributing towards the salary of our Kids and Families Lead and also our church plant in 2025 in Christ Church West Green.

### **Church Commissioners**

---

The Strategic Development Fund contributed £6,726 towards the housing of one of the curates.

### **Stepney Area Grant**

---

We applied for the Loan/Grant scheme to the diocese area of Stepney. We were awarded with a grant of £5,000 towards the organ room accessibility project.



## 8. Responsibilities of Trustees for the Financial Statements

The PCC is responsible for preparing the Annual Report and financial statements in accordance with applicable law and United Kingdom Accepted Accounting Practice.

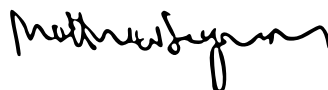
Charity law requires the PCC to prepare a statement of financial activities and balance sheet for each financial year, which gives a true and fair view of the state of affairs of the PCC and of its financial activities for that year and adequately distinguishes any material special trust or another restricted fund of the PCC. In preparing those financial statements, the PCC is required to:

- Select suitable accounting policies and then apply them consistently;
- Make judgements and estimates that are reasonable and prudent;
- State, whether the policies adopted, are by the appropriate SORP on Accounting by Charities and the Accounting Regulations and with applicable accounting standards, subject to any material departures disclosed and explained in the financial statements;
- Prepare the accounts on the going concern basis unless it is inappropriate to presume that the PCC will continue to operate.

The PCC is responsible for keeping adequate accounting records which disclose with reasonable accuracy at any time the financial position of the charity and enables them to ensure that the financial statements comply with the Charities Act 2011, the Charity (Accounts and Reports) Regulations 2008 and the Church Accounting Regulations 2006. The PCC is also responsible for safeguarding the assets of the charity and hence for taking reasonable steps for the prevention and detection of fraud and other irregularities. The PCC is responsible for the maintenance and integrity of the charity and financial information included in the charity's website.

## 9. Approval

The report of the PCC was approved by the PCC on 27 March 2025 and signed on its behalf by:



The Revd Matthew Seymour  
PCC Chairman



Aaron Rodewald  
Treasurer





# **Independent Examiners Report**



# Independent Examiners Report

To The Trustees On The Unaudited Accounts Of The Parochial Church Council of the Ecclesiastical Parish of St Saviours Hanley Road

I report to the trustees, being the members of the Parochial Church Council ("PCC"), on my examination of the accounts of St Saviours Hanley Road for the year ended 31 December 2024, which are set out on pages to 23 to 34.

---

## Responsibilities and basis of report

As the trustees of the Charity you are responsible for the preparation of the accounts in accordance with the requirements of the Charities Act 2011.

I report in respect of my examination of the trustee's accounts carried out under section 145 of the 2011 Act and in carrying out my examination I have followed all the applicable directions given by the Charity Commission under section 145(5)(b) of the 2011 Act.

---

## Independent examiner's statement

Since the charity's gross income exceeded £250,000 your examiner must be a member of a body listed in section 145 of the 2011 Act. I confirm that I am qualified to undertake the examination because I am a member of the Institute of Chartered Accountants in England and Wales, which is one of the listed bodies.

I have completed my examination. I confirm that no material matters have come to my attention in connection with the examination giving me cause to believe that in any material respect:

1. accounting records were not kept in respect of the Charity as required by section 130 of the Act; or
2. the accounts do not accord with those records; or

3. the accounts do not comply with the applicable requirements concerning the form and content of accounts set out in the Charities (Accounts and Reports) Regulations 2008 other than any requirement that the accounts give a 'true and fair view' which is not a matter considered as part of an independent examination.

I have no concerns and have come across no other matters in connection with the examination to which attention should be drawn in this report in order to enable a proper understanding of the accounts to be reached.



C J Goodhead FCA  
Knight Goodhead Ltd  
Chartered Accountants

2 May 2025

7 Bournemouth Road  
Chandler's Ford, Eastleigh  
Hampshire, SO53 3DA

# Statement of Financial Activity

For the year ended 31 December 2024

	Note	Unrestricted Funds	Restricted Funds	TOTAL FUNDS	Unrestricted Funds	Restricted Funds	TOTAL FUNDS
		2024			2023		
		£	£	£	£	£	£
<b>INCOME FROM:</b>							
Voluntary Income		275,241	13,623	288,864	256,813	4,660	261,473
Grants		15,584	114,451	130,035	-	283,890	283,890
Church Activities		16,344	-	16,344	11,673	-	11,673
Church Rental Income		20,164	-	20,164	13,540	-	13,540
Other Income		2,968	3,477	6,445	1,647	-	1,647
<b>TOTAL INCOME</b>	<b>2</b>	<b>330,301</b>	<b>131,551</b>	<b>461,852</b>	<b>283,673</b>	<b>288,550</b>	<b>572,223</b>
<b>EXPENDITURE ON:</b>							
Charitable Activities		298,193	89,427	387,620	252,895	240,117	493,012
Governance Costs		7,562	-	7,562	2,941	-	2,941
<b>TOTAL EXPENDITURE</b>	<b>2</b>	<b>305,755</b>	<b>89,427</b>	<b>395,182</b>	<b>255,836</b>	<b>240,117</b>	<b>495,953</b>
<b>NET INCOME/ (EXPENDITURE) BEFORE TRANSFER OF FUNDS</b>		<b>24,546</b>	<b>42,124</b>	<b>66,670</b>	<b>27,837</b>	<b>48,433</b>	<b>76,270</b>
Gross transfer in funds		(14,700)	14,700	-	35,065	(35,065)	-
<b>NET MOVEMENT IN FUNDS</b>		<b>9,846</b>	<b>56,824</b>	<b>66,670</b>	<b>62,902</b>	<b>13,368</b>	<b>76,270</b>
Balances brought forward at 1 January 2024		153,957	105,250	259,208	91,055	91,882	182,937
<b>BALANCES CARRIED FORWARD AT 31 DECEMBER 2024</b>		<b>163,803</b>	<b>162,074</b>	<b>325,877</b>	<b>153,957</b>	<b>105,250</b>	<b>259,207</b>



# Balance Sheet

		2024	2023
	Note	£	£
<b>FIXED ASSETS</b>			
Buildings		5,000	5,000
Improvements to The Barn		52,985	58,872
PA/AV Equipment	5	38,442	45,873
		<b>96,427</b>	<b>109,745</b>
<b>CASH IN THE BANK</b>			
Current Account		11,873	2,621
Giving Account		20,762	155,268
CCLA		215,041	0
		<b>247,676</b>	<b>157,889</b>
<b>CURRENT ASSETS</b>			
Other debtors		9,208	10,672
Prepayments	6	6,473	14,514
		<b>15,681</b>	<b>25,186</b>
<b>CURRENT LIABILITIES</b>			
Account Payable		2,939	4,289
Accruals		3,400	1,700
Agency Fees		699	217
Deferred income		14,755	537
Loan to Stepney Area Office Ministry		10,000	13,864
Payroll Payable		1,277	206
	7	<b>(33,070)</b>	<b>(20,813)</b>
<b>NET CURRENT ASSETS</b>		<b>230,287</b>	<b>162,262</b>
<b>NON -CURRENT LIABILITIES</b>			
Loan to Stepney Area Office Ministry		837	12,800
	8	<b>(837)</b>	<b>(12,800)</b>
<b>NET ASSETS</b>		<b>325,877</b>	<b>259,207</b>
<b>RESERVES</b>			
(deficit)/Excess to date		66,670	76,270
Starting Balances		259,207	182,937
		<b>325,877</b>	<b>259,207</b>
<b>FUNDS</b>			
Unrestricted		163,803	153,957
Restricted		162,074	105,250
	11	<b>325,877</b>	<b>259,207</b>

## Cashflow

### CASH FLOW STATEMENT FOR THE YEAR ENDED 31 DECEMBER 2024

		2024	2023
	Notes	£	£
NET CASH FLOW PROVIDED BY OPERATING ACTIVITIES	1	83,792	110,441
CASH FLOWS FROM INVESTING ACTIVITIES			
Interest received		5,995	1,523
Purchase of fixed assets		-	(105,478)
NET CASH FLOW		89,787	6,485
		2024	2023
		£	£
Cash at the end of the year	2	247,676	157,889
Cash at start of the year		157,889	151,404
(Decrease)/increase in cash in the year		89,787	6,485

### NOTES TO THE CASHFLOW STATEMENT FOR THE YEAR ENDED 31 DECEMBER 2024

#### Reconciliation of net movement in funds to net cash flow from operating activities

		2024	2023
		£	£
1	Net movement in funds for the year	66,670	76,270
	Dividends and interest received	(5,995)	(1,523)
	Depreciation	13,318	1,251
	(Increase)/Decrease in debtors	9,505	10,311
	Increase/(decrease) in creditors	294	24,131
	Net cash flow from operating activities	83,792	110,441
2	ANALYSIS OF CASH AND CASH EQUIVALENTS		
		2024	2023
		£	£
	Cash at bank and in hand	247,676	157,889
		247,676	157,889





# ACCOUNTING POLICIES

For the year ended 31 December 2024

---

## Basis of preparation

The financial statements have been prepared in accordance with the Church Accounting Regulations 2006 and Accounting and Reporting by Charities: Statement of Recommended Practice applicable to charities preparing their accounts in accordance with the Financial Reporting Standard applicable in the UK and Republic of Ireland (FRS 102) (effective 1 January 2019) - (Charities SORP (FRS 102)), the Financial Reporting Standard applicable in the UK and Republic of Ireland (FRS 102) and the Charities Act 2011.

The PCC meets the definition of a public benefit entity under FRS 102. Assets and liabilities are initially recognised at historical cost or transaction value unless otherwise stated in the relevant accounting policy note(s).

---

## Funds

General funds represent the funds of the PCC that are not subject to any restrictions regarding their use and are available for application on the general purposes of the PCC. Restricted funds are those donated for specific purposes.

---

## Income

### Voluntary income and capital sources

Donations and other income are recognised when received and an estimate of income tax recoverable is recognised when the related donations are recognised.

### Rental Income

Rental income from the letting of church premises is recognised when the rental is due.

### Grants

Grants and donations are accounted for when paid over, or when awarded. Grants and legacies to the PCC are accounted for as soon as the PCC is notified of its legal entitlement, the amount due is quantifiable and its ultimate receipt by the PCC is probable.

## Church Activities Income

Income from church activities is recognised when the date of the event takes place.

---

## Expenditure

For the year ended 31 December 2024

### Church activities

The diocesan Common Fund is accounted for when paid. Any Common Fund unpaid at 31 December is provided for in these accounts as an operational (though not a legal) liability and is shown as a creditor in the Balance Sheet. Expenditure incurred in the operation of the church is classed as charitable activities. Expenditure incurred in the operation of the church is classed as charitable activities. Governance costs is classed as what is needed to keep good governance of the PCC.

---

## Fixed assets

### Consecrated property and moveable church furnishings

Consecrated and beneficed property of any kind is excluded from the accounts by s.10 of the Charities Act 2011.

All expenditure incurred in the year on consecrated or beneficed buildings or on the repair of movable church furnishings acquired before 1 January 2003 is written off.

### Other fixtures, fittings and office equipment

Only items of greater than £1,000 are capitalised. Church worship equipment comprises a number of electrical and other items connected with sound, vision and worship. They will be depreciated over three years from date of first use. Computer and office equipment and furnishings are depreciated over three years from date of first use.

The PCC have ownership of a church hall any improvements to the building are depreciated over 10 years.

---

## Current assets

Amounts owing to the PCC at 31 December in respect of fees, rents or other income are shown as debtors less provision for amounts that may prove uncollectable.

# Financial Statement

For the year ended 31 December 2024

	2024			2023		
	Unrestricted	Restricted	Total	Unrestricted	Restricted	Total
	£	£	£	£	£	£
<b>Donation</b>						
Collections - GASDS	2,231	-	2,231	1,920	-	1,920
Gift Aid	50,429	2,603	53,032	43,760	-	43,760
One off gifts - Gift Aided	20,026	10,340	30,366	30,518	2,500	33,018
One off gifts - Not Gift Aided	2,981	-	2,981	1,814	-	1,814
Planned giving - Gift Aided	172,757	-	172,757	142,377	960	143,337
Planned giving - Not Gift Aided	26,817	680	27,497	36,424	1,200	37,624
<b>Total Donation</b>	<b>275,241</b>	<b>13,623</b>	<b>288,864</b>	<b>256,813</b>	<b>4,660</b>	<b>261,473</b>
<b>Grants</b>						
Grants	15,000	114,451	129,451	-	282,110	282,110
Income from Other Organisations	584	-	584	-	1,780	1,780
<b>Total Grants</b>	<b>15,584</b>	<b>114,451</b>	<b>130,035</b>	<b>-</b>	<b>283,890</b>	<b>283,890</b>
<b>Church Activities</b>						
Dance Class Income	9,016	-	9,016	6,063	-	6,063
Event Income	6,532	-	6,532	3,669	-	3,669
Wedding Fees	796	-	796	1,941	-	1,941
<b>Total Church Activities</b>	<b>16,344</b>	<b>-</b>	<b>16,344</b>	<b>11,673</b>	<b>-</b>	<b>11,673</b>
<b>Rental</b>						
Church Rental-Ad hoc	1,245	-	1,245	3,340	-	3,340
Church Rental-Regular	9,200	-	9,200	10,200	-	10,200
Hall Rental -Ad hoc	2,985	-	2,985	-	-	-
Flat rental	6,733	-	6,733	-	-	-
<b>Total Rental</b>	<b>20,164</b>	<b>-</b>	<b>20,164</b>	<b>13,540</b>	<b>-</b>	<b>13,540</b>
<b>Other Income</b>						
Bank interest	2,518	3,477	5,995	1,523	-	1,523
Sales of products	450	-	450	124	-	124
<b>Total Other Income</b>	<b>2,968</b>	<b>3,477</b>	<b>6,445</b>	<b>1,647</b>	<b>-</b>	<b>1,647</b>
<b>Total Income</b>	<b>330,301</b>	<b>131,551</b>	<b>461,852</b>	<b>283,673</b>	<b>288,550</b>	<b>572,223</b>

## Expenses

	2024			2023		
	Unrestricted	Restricted	Total	Unrestricted	Restricted	Total
	£	£	£	£	£	£
<b>Worship</b>						
Christmas	2,506	-	2,506	1,853	-	1,853
Depreciation on PA/AV	7,431	-	7,431	733	518	1,251
Festival services	303	-	303	374	-	374
PA and AV	744	575	1,319	1,239	1,133	2,372
Preaching and Teaching	651	-	651	623	-	623
Sundays Content	4,751	-	4,751	1,936	-	1,936
Wedding Cost	5	-	5	724	-	
Worship	801	-	801	806	-	806
Worship Team	282	-	282	648	-	648
<b>Total Worship</b>	<b>17,473</b>	<b>575</b>	<b>18,047</b>	<b>8,936</b>	<b>1,651</b>	<b>10,587</b>
<b>Community</b>						
Dance Expenses	4,203	109	4,312	5,894	335	6,229
Dicipleship & Hubs	677	-	677	197	-	197
Events	4,170	-	4,170	3,504	-	3,504
Hubs	-	-	-	159	137	296
Kids	1,204	-	1,204	795	-	795
Leadership Development	327	-	327	552	-	552
Mid-Week Kids	1,997	618	2,615	864	498	1,362
Newcomers	66	-	66	164	-	164
Pastoral	892	-	892	1,077	-	1,077
Wild Fires	3,328	-	3,328	4,344	-	4,344
Womens and Mens Ministry	-	104	104			
Youth	1,041	-	1,041	248	-	248
<b>Total Community</b>	<b>17,906</b>	<b>831</b>	<b>18,737</b>	<b>17,798</b>	<b>970</b>	<b>18,768</b>
<b>Mission</b>						
Alpha	195	-	195	162	-	162
Church Planting	6	1,105	1,111	-	-	-
Compassion and Local Ministry	-	-	-	303	695	998
Grants and Giving Away	7,873	1,265	9,138	6,371	-	6,371
Missional Activities	1,242	111	1,353	1,368	1,025	2,393
<b>Total Mission</b>	<b>9,316</b>	<b>2,481</b>	<b>11,797</b>	<b>8,203</b>	<b>1,720</b>	<b>9,923</b>



Expenses continued

	2024			2023		
	Unrestricted	Restricted	Total	Unrestricted	Restricted	Total
	£	£	£	£	£	£
<b>Operations</b>						
Church Refurbishments	2,939	70,175	73,114	5,072	223,401	228,473
Cleaning	7,515	-	7,515	5,770	-	5,770
Clergy Child Care	398	-	398	327	-	327
Clergy Housing	10,804	-	10,804	-	-	-
Communication & Media	487	595	1,082	147	-	147
Depreciation on Hall Improvements	5,887	-	5,887	-	-	-
Flat Rental	4,800	-	4,800	-	-	-
Finances	421	-	421	390	-	390
Garden Maintenance	485	-	485	239	-	239
Hire Costs	928	200	1,128	-	-	-
HR	356	-	356	159	-	159
Insurance	6,953	-	6,953	6,990	-	6,990
IT	3,043	-	3,043	1,503	-	1,503
Office Management	368	-	368	327	-	327
Office Supplies	74	-	74	51	-	51
Repairs and Maintenance	4,451	-	4,451	4,004	-	4,004
Shared Consumables	902	-	902	615	-	615
Shared Equipment	442	-	442	333	-	333
Staff Hospitality	1,104	-	1,104	139	-	139
Staff Well Being	673	-	673	122	-	122
Team Training	1,309	-	1,309	1,294	-	1,294
Tools and Equipment	7	-	7	-	-	-
Utilities	18,936	-	18,936	23,053	-	23,053
Travel	-	-	-	-	-	-
Vicar Discretion Fund	229	-	229	251	-	251
Volunteer Support	94	-	94	287	-	287
<b>Total Operations</b>	<b>73,604</b>	<b>70,970</b>	<b>144,574</b>	<b>51,071</b>	<b>223,401</b>	<b>274,472</b>
<b>Staff</b>						
<b>Total Staff</b>	<b>145,796</b>	<b>14,570</b>	<b>160,366</b>	<b>151,888</b>	<b>12,374</b>	<b>164,262</b>
<b>Common Fund</b>	<b>34,098</b>	<b>-</b>	<b>34,098</b>	<b>15,000</b>	<b>-</b>	<b>15,000</b>
<b>Total Common Fund</b>	<b>34,098</b>	<b>-</b>	<b>34,098</b>	<b>15,000</b>	<b>-</b>	<b>15,000</b>
<b>Governance</b>						
Accounting	1,700	-	1,700	1,720	-	1,720
Bank Charges	409	-	409	408	-	408
Legal Fees	4,720	-	4,720			
Payroll	270	-	270	360	-	360
PCC Expenses	463	-	463	453	-	453
<b>Total Governance</b>	<b>7,562</b>	<b>-</b>	<b>7,562</b>	<b>2,941</b>	<b>-</b>	<b>2,941</b>
		-	-		-	-
<b>Total Operating Expenses</b>	<b>305,755</b>	<b>89,427</b>	<b>395,182</b>	<b>255,835</b>	<b>240,117</b>	<b>495,952</b>



# Notes

For the year ended 31 December 2024

3. STAFF COSTS	2024	2023
	£	£
Wages and salaries (incl PAYE)	63,983	35,860
Social security costs	-	-
Pension costs	11,875	1,650
Freelance Staff costs	6,320	4,200
Curate costs paid to LDF + Housing	78,188	122,552
	160,366	164,262
	2024	2023
Total amount of staff employed	6	2
FTE staff employed	3.3	1.1
No staff member was paid over £60,000 in 2024		

4. MISSION GRANTS	Grant Amount
A Rocha	1,200
Choices Islington	600
Congregation in Need	1,163
Duncombe School	600
Foodbank (St Mary's Hornsey Rise)	1,300
Growing Hope	475
IJM	600
London City Mission	1,300
Power the Fight	1,300
Tree of Live	600
<b>Total</b>	<b>9,138</b>

5. FIXED ASSETS	Buildings	Barn Improvements	PA/AV Equipment	Total
<b>Cost At 1 January 2024</b>	5,000	58,872	49,349	113,221
Additions during year	-	-	-	-
Disposals during year	-	-	-	-
<b>At 31 December 2024</b>	<b>5,000</b>	<b>58,872</b>	<b>49,349</b>	<b>113,221</b>
<b>Depreciation At 1 January 2024</b>	-	-	(3,475)	(3,475)
Charge for the year	-	(5,887)	(7,431)	(13,318)
Disposals during year	-	-	-	-
<b>At 31 December 2024</b>	<b>-</b>	<b>(5,887)</b>	<b>(10,906)</b>	<b>(16,794)</b>
<b>Net Book Value At 1 January 2024</b>	5,000	58,872	45,873	109,745
<b>At 31 December 2024</b>	<b>5,000</b>	<b>52,985</b>	<b>38,442</b>	<b>96,427</b>



6. DEBTORS	2024	2023
Prepayments	6,473	14,514
Amounts owed from Kings Cross Church	-	92
Other debtors	9,208	10,580
Total	15,681	25,186

7. CURRENT LIABILITIES	2024	2023
Accounts Payable	2,939	4,289
Accruals	3,400	1,700
Agency Fees	699	217
Deferred income	14,755	537
Loan to Stepney Area Office Ministry	10,000	13,864
Payroll Payable	1,277	206
Total Current Liabilities	33,070	20,813

8. NON CURRENT LIABILITIES	2024	2023
Loan to Stepney Area Office Ministry	837	12,800
Total Current Liabilities	837	12,800

## 9. CONTINGENT LIABILITIES

There were no contingent liabilities at the end of 31st December 2024. (2023: None)

10. RELATED PARTY TRANSACTIONS		
Name	Amount	Reason
Kings Cross Church	1,400	Finance oversite
Kings Cross Church	1,500	Grant through Nationwide
Donations from PCC Members	44,076	

11. RESTRICTED FUNDS							
Donor	Purpose	Opening Balance	Income	Expenditure	Transfers Out	Transfers In	Closing Balance
		£	£	£	£	£	£
Various Donors	Building Works	102,589	93,594	(70,950)	-	-	125,233
Porters Trust	Church Plant		10,000	(1,700)	-	10,000	18,300
ISTD	Dance	-	1,333	(716)	-	-	617
Nationwide	ESOL	-	1,500	(111)	-	-	1,389
Various Donors	Fellowship Fund	-	443	(1,379)	-	4,700	3,763
Various Donors	Garden Project	484	455	-	-	-	939
Porters Trust	Kids Pastor	-	17,500	(5,667)	-	-	11,833
London Diocese Fund	Strategic Ministry Fund	2,177	6,726	(8,903)	-	-	-
<b>Total Restricted funds</b>		<b>105,250</b>	<b>131,551</b>	<b>(89,427)</b>	<b>0</b>	<b>14,700</b>	<b>162,074</b>

**Building works:** This fund is from grants and restricted gifts towards the refurbishment and maintenance of any of the buildings on the church site.

**Church Plant:** The fund is from grants and individuals giving towards the next church plant coming out of St Saviour's.

**Dance:** This fund is from a grant to enable Dance at St Saviour's to support the community who attends with bursaries and materials, including the after school meals and uniforms.

**ESOL:** This fund is for the english language classes held at St Saviours, for materials, staffing or training.

**Fellowship Fund:** To meet urgent need for those within the congregation, wider parish or people living nearby that are known to the congregation who are facing hardship or crisis. It also can include blessing people facing other crises, such as bereavement or financial challenges, to facilitate a culture of generosity.

**Garden Project:** this is from grants received to work on the garden on the church grounds, towards materials or to employ personnel to improve or maintain the site.

**Kids Pastor:** grants to be used in the employment of staff working with kids at St Saviour's.

**Strategic Ministry Fund:** for the housing of a curate at St Saviour's.

12. ANALYSIS OF NET ASSETS BY FUND	Unrestricted Funds	Restricted Funds	TOTAL FUNDS 2024	TOTAL FUNDS 2023
Fixed Assets	96,427	-	96,427	109,745
Other Assets	101,282	162,074	263,357	183,075
<b>Total Assets</b>	<b>197,709</b>	<b>162,074</b>	<b>359,784</b>	<b>292,820</b>
Current Liabilities	(33,070)	-	(33,070)	(20,813)
Long Term Liabilities	(837)	-	(837)	(12,800)
	<b>163,802</b>	<b>162,074</b>	<b>325,877</b>	<b>259,208</b>







KINGS X  
CHURCH



THE CHURCH  
OF ENGLAND

Porter's Trust



Garfield Weston  
FOUNDATION



Cloudesley



Imperial Society of  
Teachers of Dancing

# ST SAVIOUR'S

FINSBURY PARK