

REGISTERED COMPANY NUMBER: 05034324 (England and Wales)
REGISTERED CHARITY NUMBER: 1185487

Report of the Trustees and
Unaudited Financial Statements for the Year Ended 31 March 2023
for
The British Psychoanalytic Council

The British Psychoanalytic Council

Contents of the Financial Statements for the Year Ended 31 March 2023

	Page
Report of the Trustees	1 to 13
Independent Examiner's Report	14
Statement of Financial Activities	15
Balance Sheet	16 to 17
Cash Flow Statement	18
Notes to the Cash Flow Statement	19
Notes to the Financial Statements	20 to 27
Detailed Statement of Financial Activities	28 to 29

Report of Trustees

The trustees who are also directors of the charity for the purposes of the Companies Act 2006, present their report with the financial statements of the charity for the year ended 31 March 2023. The trustees have adopted the provisions of Accounting and Reporting by Charities: Statement of Recommended Practice applicable to charities preparing their accounts in accordance with the Financial Reporting Standard applicable in the UK and Republic of Ireland (FRS 102) (effective 1 January 2019).

OBJECTIVES AND ACTIVITIES

Objectives and aims

The Council became a Charity on 25th September 2019.

The charitable company's objectives are:

- to advance the health of the public through the maintenance and regulation of professional standards and clinical practice in psychoanalytic and psychodynamic psychotherapy and counselling, and through the promotion and accreditation of training,
- to advance education in and of psychoanalytic and psychodynamic psychotherapy and counselling and its theoretical underpinnings through, but not limited to, the promotion of research and publication of the useful results thereof; and
- advancing knowledge and understanding of the theory and practice of psychoanalysis and psychoanalytically informed therapies.

Significant activities

The charitable company's objectives are to advance the health of the public through the maintenance and regulation of professional standards and clinical practice in psychoanalytic and psychodynamic psychotherapy and counselling, and through the promotion and accreditation of training, to advance education in and of psychoanalytic and psychodynamic psychotherapy and counselling and its theoretical underpinnings through, but not limited to, the promotion of research and publication of the useful results thereof; and advancing knowledge and understanding of the theory and practice of psychoanalysis and psychoanalytically informed therapies.

The British Psychoanalytic Council (BPC) is the leading UK professional association and voluntary accredited register for the psychoanalytic and psychodynamic psychotherapy profession. The BPC is made up of Member Institutions which are training institutions and professional associations in their own right. Individual psychoanalytic and psychodynamic psychotherapists and counsellors are members of these organisations and registrants of the BPC.

The BPC is a PSA accredited register. The PSA is overseen by the UK Parliament. PSA accredited registers help the public access better care by ensuring that the registered health practitioners are competent and trustworthy. As an accredited register BPC ensures that the information it provides is clear and helps the public to make informed choices about the therapy BPC's registrants offer.

BPC protects the public through maintaining its public register of psychoanalytically informed practitioners who meet its fitness to practise standards. The BPC continues to be a highly regarded professional body, recognised within the field as maintaining high professional standards.

BPC accredits the trainings of its member institutions, ensuring that they meet BPC's training standards. An individual who qualifies from one of these trainings, or equivalent, is then eligible for entry into the BPC's register. BPC registration is governed by a range of fitness to practise requirements including a code of ethics, continuing professional development and fitness to practise procedures.

In addition to BPC's accredited trainings it also "kite marks" a number of trainings that are

psychoanalytic in their formulation but do not, on their own, enable practitioners to appear on the BPC register. Practitioners completing these trainings can appear on the BPC public rosters. The charity currently "kite-marks" Dynamic Interpersonal Therapy (DIT), Mentalisation Based Therapy (MBT), Transference Focused Psychotherapy (TFP), Counselling Children and Young People in Education and Community Settings and Time-limited Adolescent Psychodynamic Psychotherapy (TAPP).

The BPC has a vision of a society that recognises and values human relationships and the use of psychoanalytic theories of mind to support emotional wellbeing, good mental health, and effective social policy to create a better society.

The charity's mission is to advance the health of the public through the promotion of the highest clinical standards of training and clinical practice of psychoanalytic and psychodynamic psychotherapy and psychodynamic counselling; and advance the education of psychoanalytic theories of mind. Many of the charity's registrants are also senior consultant psychiatrists, clinical psychologists, academics, and leading figures in the field of mental health, both nationally and internationally.

Public benefit

The Trustees confirm their compliance with the duty to have due regard to the Public Benefit guidance published by the Charity Commission when reviewing the Charity's aims and objectives in planning future activities.

Volunteers

The BPC has a number of volunteers which sit on its various committees which offer advice and support to the Trustees, the chief executive and other team members. These volunteers are predominantly clinicians and practitioners in psychoanalysis, psychoanalytic, and psychodynamic psychotherapy and counselling.

A pool of volunteers from across the psychoanalytic and psychodynamic psychotherapy profession provide content for its termly print publication and its e-newsletters.

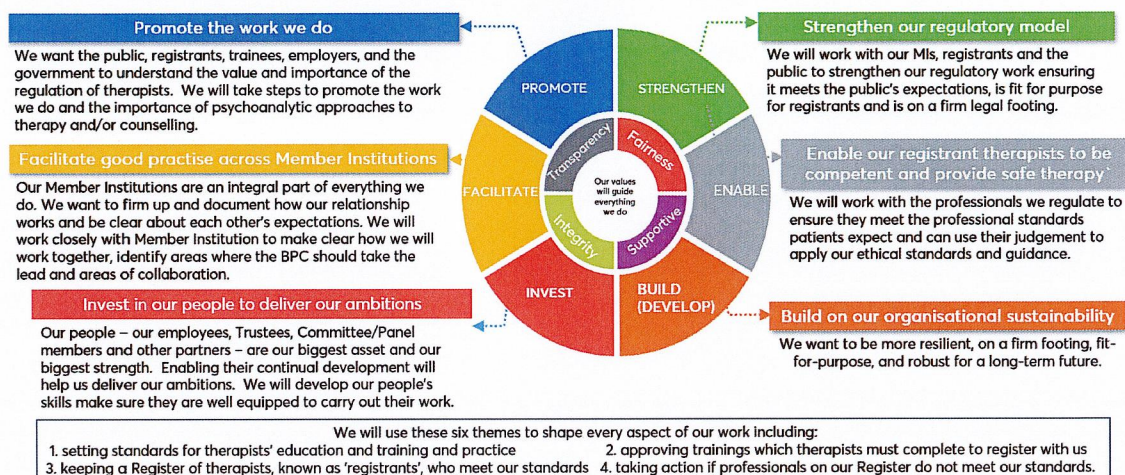
ACHIEVEMENT AND PERFORMANCE

Charitable activities

The BPC has continued to evolve and grow in 2022 – 2023, as the new Chief Executive entered his second year with the organisation and implemented a three-year strategy and annual business plan. The Board are impressed and proud of the progress the organisation has made and are grateful to the staff team, the committees and the many volunteers that enable the BPC to carry out its work to protect the public.

Strategy

Our strategy, our commitment



People

There were some key staffing changes during this year; the full time Membership Officer finished with the organisation in September 2022 and the role was covered by a combination of temporary staff and existing staff cover. Two new part-time Membership Officers started with the organisation in February and March respectively, which has increased the capacity within the membership team. A new role, Head of Professional Practice, that sought to bring clinical expertise into the senior leadership team was created and recruited to in the early Summer of 2022. The successful candidate started with the organisation in November 2022. The Communications Manager finished with the organisation in March 2023.

Membership

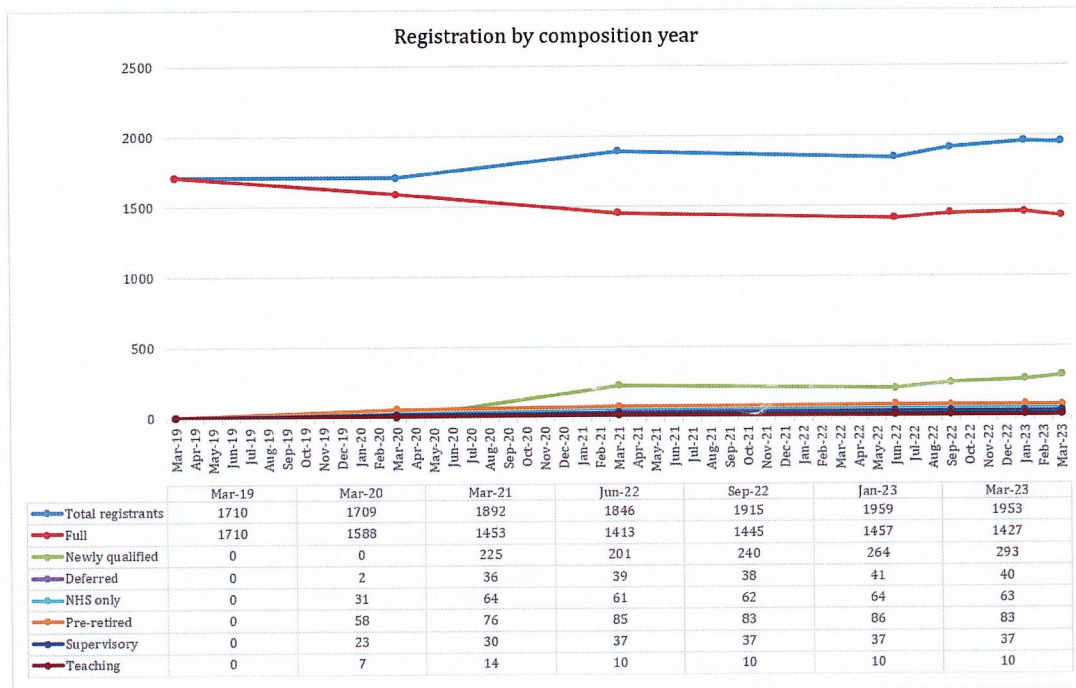
During this financial year, the BPC Council approved the joining of 3 Member Institutions (its 'members'). These 3 previously made up the Association of Psychodynamic Counsellors and each joined the BPC in their own right. Both the temporary structures of the Association of Psychodynamic Counsellors and the Association of Medical Psychodynamic Psychotherapists were dissolved.

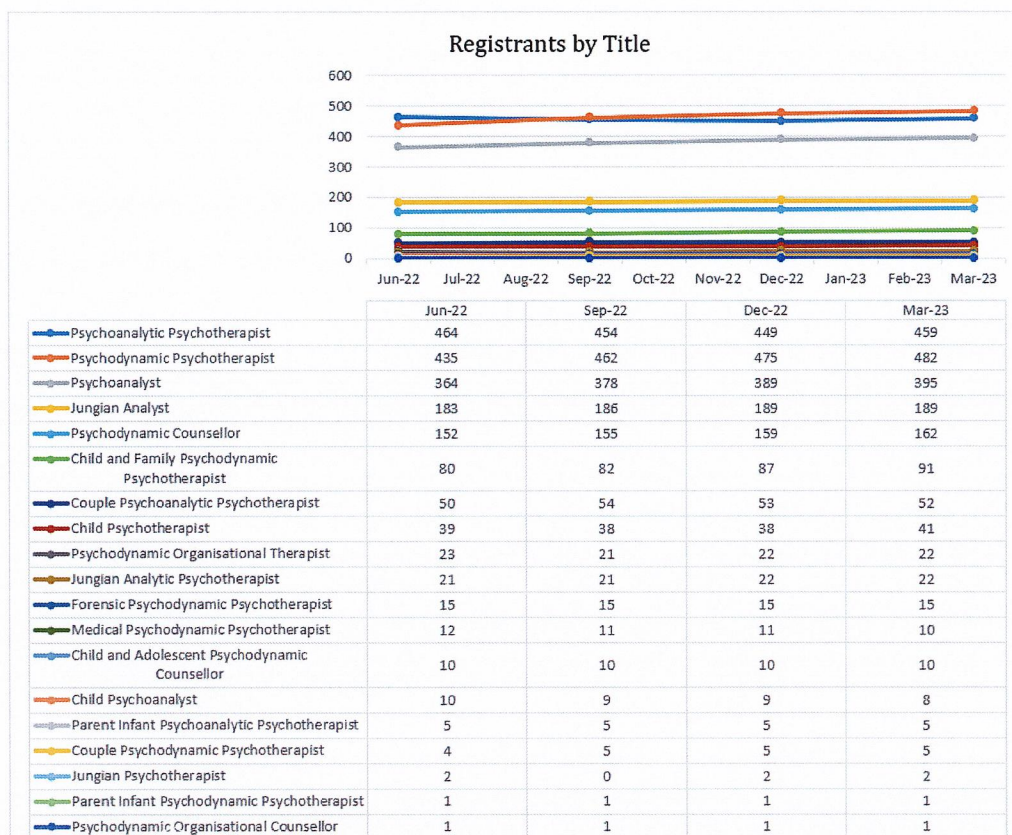
BPC Member Institutions totalled 22 in 2022 – 2023:

Anna Freud
Association for Psychoanalytic Psychotherapy in the Public Sector
Association for Psychodynamic Practice and Counselling in Organisational Settings
Association of Jungian Analysts
Birkbeck Counselling Association
British Psychoanalytic Association
British Psychoanalytical Society / The Institute of Psychoanalysis
British Psychotherapy Foundation
Enfield Counselling Service
Forensic Psychotherapy Society
Foundation for Psychotherapy and Counselling
Gloucestershire Counselling Service
Manor House Centre for Psychotherapy and Counselling
North of England Association of Psychoanalytic Psychotherapists

Northern Ireland Psychoanalytic Society
 Scottish Association of Psychoanalytical Psychotherapists
 Severnside Institute for Psychotherapy
 Society of Analytical Psychology
 Tavistock Relationships
 Tavistock Society of Psychotherapists
 Wessex Counselling and Psychotherapy
 West Midlands Institute of Psychotherapy

The BPC increased the number of registrants listed on the accredited public register to **1953** across the various categories (full registration, supervisory/teaching, NHS only, pre-retired and deferred). **183** of these registrants were new to the BPC, and of these new registrants, **115** were newly qualified. The Board are pleased that the BPC is welcoming new registrants, especially new graduates who are the future of the profession.





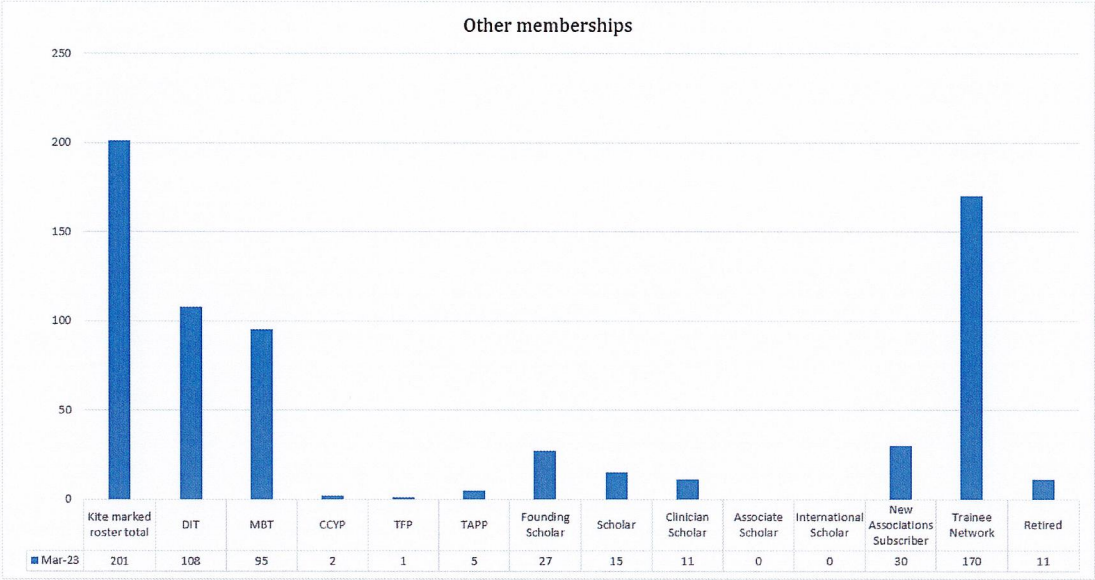
The BPC continues to strengthen communications with trainees on a BPC accredited training course. A new Trainee Network was created where trainees could sign up to the BPC database providing details about their expected qualification, and opt in to receive communications from the BPC. By March 2023, **170** BPC trainees had signed up to this group.

The most common reason for registrants to end their registration with the BPC is retirement, and we wanted to find a way to keep in touch with our retired registrants and to continue to benefit from their significant expertise built up over their careers. We created a new retired category in early 2023 so those who were not renewing their registration could join this membership. By March 2023, there were **11** people in this retired category.

Individuals who have completed a BPC 'kite marked' training such as Dynamic Interpersonal Therapy (DIT), Mentalisation Based Treatment (MBT), Counselling Children and Young People in Education and Community Settings (CCYP), Time-limited Adolescent Psychodynamic Psychotherapy (TAPP) or Transference-focused Psychotherapy (TFP) are eligible to be added to the BPC kite marked roster on the website. In November 2022, the BPC introduced a new membership offer to kite marked individuals to remain listed on the BPC website. This enabled kite marked individuals to sign up to an automatic annual subscription, or to complete a renewal form for this membership each year. By March 2023, **201** individuals had signed up for this new kite marked membership.

The BPC Scholars' Network continued to be enhanced in this financial year, with an expansion of membership categories to include Associate Scholars, Clinician Scholars and International Scholars. By expanding the potentiality for membership, we hope to engage with a rich community of colleagues of different backgrounds, and from different stages of career, to contribute to the important growing dialogue around topics of psychoanalytical scholarship in its many forms. By March 2023, the Scholars' Network had 53 made up of Founding Scholars, Scholars and newly introduced Clinician Scholars. The Friday evening of the BPC's flagship conference, Psychoanalytic Psychotherapy Now 2022, was sponsored by the Scholars' Network with Founding Scholar Dr Noreen Giffney as the speaker and member of

the Scholars’ Committee Dr Caroline Bainbridge as the Chair, followed by drinks reception to showcase our Scholars;



Education

Between April 2022 and March 2023, the BPC carried out four full reaccreditation site visits to trainings, plus one reaccreditation of a kitemarked training course.

The British Psychotherapy Foundation and the North of England Association of Psychoanalytic Psychotherapists were both visited on 22 July 2022 by teams led by Sally Beeken and Sue Gottlieb respectively. The BPF’s trainings in Jungian Analysis and Psychoanalytic Psychotherapy, and NEAPP’s trainings in Psychoanalytic and Psychodynamic Psychotherapy were reaccredited for five years. The Tavistock was visited in October 2022 by a team led by Jan McGregor Hepburn, and trainings in Psychoanalytic and Psychodynamic Psychotherapy, Forensic Psychodynamic Psychotherapy, Couples Psychodynamic Psychotherapy, Psychodynamic Psychotherapy with Children and Families and Psychodynamic Psychotherapy for Child and Adolescent Psychiatrists were reaccredited for two years. In November, the Severnside Institute for Psychotherapy was visited by a team led by Sally Beeken and their trainings in Psychodynamic and Psychoanalytic Psychotherapy were accredited for five years.

In addition, the Dynamic Interpersonal Therapy kitemarked course at Anna Freud was visited in November by a small team led by Jan McGregor Hepburn and reaccredited for five years.

All visits were conducted primarily in person, with some people attending online.

Committees

Board of Trustees

Between April 2022 and March 2023 the BPC Board met 6 times. 5 of these were Board meetings and one was an all-day strategy meeting.

The Board began to receive a more formalised and informative quarterly CEO report detailing the key information and activities of the team. The Board found this narrative and data particularly helpful. The organisation’s governance processes continued to be refined in terms of the format of the Board meeting agendas, and the public summaries and meeting dates of the Board meetings continue to be displayed on the BPC website.

Registration Committee

The Registration Committee is chaired by the BPC Registrar Sally Beeken. During the year, three members stepped down from the committee for various reasons. The committee is grateful to them for all their work over many years of membership. One new member joined the committee towards the end of 2022.

The committee continued to meet monthly on Zoom, where they discussed the reaccreditation visits and continue to review the training criteria documents. The committee also set up a working party to look at possible changes for the requirements for those supervising psychodynamic trainees. They are also exploring the possibility of accrediting new trainings, both at existing MIs and new training bodies.

Professional Standards Committee

The committee consists of 5 clinicians who are senior BPC registrants. The staff group contribute a great deal to the committee and undertook particularly sterling work this year with the CPD audit.

5% of eligible registrants were randomly selected for the CPD audit on 6 May 2022. These 85 registrants submitted a form detailing further information about their general and clinical CPD activities in the calendar year 2021, these were confirmed by their countersignatories. 6 of these were discussed at the October audit meeting, and all 85 passed the audit. The audit panel was made up of the Professional Standards Committee and 2 Board members.

The Committee also worked on the drafted Standards of Conduct, Performance and Ethics document before it went to consultation. They also continued to consider and advise on individual matters about professional conduct that did not a breach of the code of ethics and therefore a Fitness to Practise matter.

Ethics Committee

The Ethics Committee is the only representative committee of the BPC, Member Institutions represented by a registrant who is usually the chair of the Ethics Committee of the MI. In this period all Member Institutions have been represented on the committee, except for six: Enfield Counselling, Forensic Psychotherapy Service, Gloucestershire Counselling Service, Society for Analytic Psychology, Tavistock Relations and the Tavistock Society of Psychotherapists.

Alan Colam has remained in the position of Chair; a replacement Chair has yet to be appointed.

The revised Code of Ethics has been drafted and considerable work has been done on this by the Ethics Committee and the Board. This goes out to public consultation later in 2023.

The Confidentiality Guidelines drafted by the Ethics Committee have been subject to legal opinion and advice and will be put to the Board of Trustees for final approval.

The revised Fitness to Practice procedure has been operating for over a year and has been working efficiently. Most frequent complaints have had to do with the behaviour and good health of registrants, their functioning within their professional competence and in the best interests of patients and appropriate protection of information and confidentiality. The revised procedure has focused enquiries on the Head of Regulation and the Head of Professional Practice, relieving the Chair and Committee of this task, maintaining a process which is clearer and more contained. This has changed the focus of the business of the Chair and members of the Ethics Committee, which needs to continue to consider its remit and function.

Government consultation on the Conversion Therapy Ban ended in February 2022. There is as yet no draft legislation. The Ethics committee is concerned about the impact of any proposed legislation on the safety of clinicians working with patients presenting with gender uncertainty. The matter is on the agenda for discussion in the committee at its meeting on 21 April, when Igi Moon (of the MoU group) and Juliet Newbigin (chair of BPC Sexuality and Gender Diversity Group) will attend.

Sexual and Gender Diversity Committee

During this period the group became an officially recognised advisory committee of the BPC with its own terms of reference. Poul Rohleder, a long-standing member of the group who is also a member of the BPC Board, is the official spokesperson for the Committee on the Board.

The Advisory Committee had two meetings during this period, in April and November 2022. One member stood down and three new members joined. In January the committee met in person, after a prolonged period of meeting remotely, for a social event to introduce the new members to one another.

The Committee pursued its intention to organise follow-up events to build on the impact of the PPNow Conference in 2021 on Homosexuality and Psychoanalysis and the Statement of Regret. On 25th March, members of the Advisory Committee helped to organise and staff a Saturday seminar entitled “Exploring Clinical Approaches in Work with Gender Questioning Young People”. The event was held in person at a venue in Islington. Two speakers, Professor Alessandra Lemma and Dr. Aidan Kelly, both of whom have considerable experience of work in the area, presented their own ideas and answered questions, chaired and facilitated by Dr. Louise Lyon. The discussion then continued in small groups, chaired by members of the Advisory Committee, and concluded with a final plenary session. The event sold out quickly and received good feedback. The Committee has discussed the possibility of running the event again for those unable to attend.

Members of the committee continue to attend the meetings of the Coalition for the Memorandum of Understanding on Conversion Therapy. They have also been involved in discussions with BPC staff about the impact on the profession of the government’s planned legislation to ban conversion therapy for sexual and gender minorities. This is an ongoing concern as draft legislation may be introduced at very short notice. The Committee intends to suggest a training event for members of MIs to air the anxieties which are often expressed about the effects that the proposed legislation may have on work with individuals who seek to question their sexuality or gender orientation.

Scholars Committee

In 2016, the Board of Trustees of the British Psychoanalytic Council approved the creation of the Scholars Committee and its Scholars Network as a means of enhancing the impact of the BPC by developing more formal, collaborative relationships with the many British and international academics who have already made important contributions to the field of psychoanalytical scholarship through research and publications. The Scholars Committee enjoyed a formal launch party at Freud Museum London in 2018, with over 100 attendees. Since that time, the Scholars Committee has continued to attract new fee-paying applicants, and has continued to produce a termly e-newsletter, The Scholar’s Study, and has hosted many on-line seminars, available to both scholars and to clinical registrants of the BPC.

During the initial years, the Scholars Committee accepted applications solely from academics based in the United Kingdom, and solely those who had already established themselves at the postdoctoral level. In 2022 and 2023, the committee engaged in many discussions with Greg Ross-Sampson and Laura Dunn and eventually agreed, with the approval of the Board of Trustees, to expand membership in an effort not only to increase the impact of the work of the Scholars Committee and the Scholars Network but, also, to enhance the visibility of the British Psychoanalytic Council itself.

The BPC now offers applications for the following categories, which include not only those individuals trained formally as doctoral-level scholars, but, also, those trained as psychoanalytical practitioners who have also made important contributions to scholarship:

- a) “Clinician Scholar” (restricted solely to a clinical registrant of the British Psychoanalytic Council who has made a public contribution to psychoanalytical scholarship through an extensive track record of publications).
- b) “Associate Scholar” (i.e., a Ph.D. student undertaking explicitly psychoanalytical dissertation research projects).
- c) “International Scholar” (i.e., a category of membership awarded to a clinician or an academic from overseas who will have made a significant contribution to psychoanalytical scholarship).

d) “Honorary Scholar” (a rare award for a distinguished contributor).

The Scholars Committee remains hopeful that these new potential membership categories will increase our impact over the coming year.

Communications

Over the last year, we have substantially increased our social media followers:

Twitter:

April 2021: 13,600

March 2022: 14,400

March 2023: 14,652

Facebook:

April 2021: 5,898

March 2022: 6,668

March 2023: 6,801

LinkedIn:

April 2021: 901

March 2022: 1,413

March 2023: 1,794

Having a larger audience means we can more effectively promote our work and profile, our MIs, the profile of our Registrants, and the importance of psychoanalytically-informed therapy.

Some of the campaigns we have promoted include:

- One-off BPC in-person and online events in Safeguarding, GDPR, gender and others.
- PPNOW 2022
- Staff recruitment: BPC Trustees, Membership Officers (x2), New Associations Editorial Board members
- Holiday communications
- Renewal communications
- Community events & opportunities

As a staff, we are committed to increasing engagement. This includes:

- Promoting our online event calendar and online jobs board
- Promoting inclusion in the monthly eNewsletter, which has prompted a sharp increase in requests to be included in the eNewsletter, from Registrants and MIs.
- We have worked with the Scholars Committee to increase engagement with their community through development of their tri-annual Scholars Study eNewsletter.

We have worked increasingly closely with other organisations on a number of initiatives, including:

- Climate Emergency Mental Health and Psychological Professions Coalition (ACC, BACP, BAAT, CPA, RPsych, RCP, UKAHPP, UKCP)
- SCoPEd (ACC, BACP, Human Givens, NCS, UKCP)
- Networking/sharing best practice and advice with BACP and UKCP.

The current New Associations editorial board consists of Helen Morgan as editor. Board members consist of Deborah Wright, Noreen Giffney, Christopher Scanlon and Nini Fang, although this is a smaller than average board, Helen prefers a small group of active members than a large group of inactive members. The journal is on a steady pace, however, Helen is seeking a change of pace with a feedback survey sent out in the most recent BPC newsletter and a strategic away day coming up. It's likely there will be some thematic changes to the publication soon. The most recent editions of New Associations was distributed to 2,073 individuals.

Web Analytics Snapshot

Web Sessions:

Total: 16,868
By Web Search: 12,235
Direct Visit: 3,882
Social Media: 287

Web Users:

Total: 11,089
By Web Search: 7,975
Direct Visit: 2,685
Social Media: 183

Average time per web session: 1m 40s

Most visited page: [Find a psychoanalytic psychotherapist](#)

Web Takeaways

- Our website's engagement time is 59% higher than the average in London, UK
- The most engaged new visitors on our site arrive by 'referral' which means they're clicking on our site from another web source that **isn't** a search engine
- The least engaged new visitors arrive through social media
- Our find a therapist page is the most visited page and the most time a user spends is on that page
- The average amount of time spent on our homepage is 24 seconds
- The second most dwelled on page is our jobs page where visitors spend an average of 1 minute and 10 seconds

Newsletter Snapshot

April 2021 – March 2022

Average Unique Open Rate: 73%
Average Click-through Rate: 15%
Total Clicks: 83
Total Opens: 166,491
Recipient Growth Rate: +5%

April 2022 – March 2023

Average Unique Open Rate: 83%
Average Click-through Rate: 16%
Total Clicks: 9,226
Total Opens: 140,321
Recipient Growth Rate: -6%

The BPC website has an area linking to our Member Institutions and Training Organisations, however there previously has not been an updated list of accredited training courses. The organisation has now created a new subsection of the training area of the website, separated by groups they are designed to work with (adults, children or couples) then by approach (e.g. psychoanalysis or psychodynamic psychotherapy). There is then a basic introduction to this approach and a list of the accredited trainings, linked to the training organisation's website directly for further information. This area of the website was made live in early March and had approximately 800 page views in the first month. It is one of the most regularly viewed pages on the BPC website.

Regulation

The new complaints procedure came into effect in January 2022 and it has been interesting to monitor the number of enquiries and complaints received in the financial year 2022 – 2023 following this change in procedure. During this year, there have been **45** enquiries. From these, **10** formal complaints were put through the acceptance process and **3** complaints were accepted for further investigation. During these year, the Screening Committee met twice to review complaints, there was **1** interim order hearing, **2** interim order reviews and **1** preliminary hearing. There was one other ongoing investigation that was scheduled for hearing in April and May of 2023.

Events

The first BPC safeguarding training, with the trainer Dr Liz McMonagle, took place online on Saturday 24 September 2022. The event was for BPC registrants only, with 54 attendees. The training went well with positive feedback and suggestions of future training sessions.

The BPC held its flagship conference, Psychoanalytic Psychotherapy Now, on Friday 11 and Saturday 12 November. The conference was titled 'Insiders and Outsiders: Navigating identities and divisions inside and outside the consulting room' and explored themes of race, ethnicity and identity and how we might take a more psychosocial and intersectional perspective in psychoanalytic work. This was hybrid conference, with the in-person element taking place in Central London. There staff had to negotiate a last-minute change of venue due to the unforeseen circumstances with the usual conference venue. We were pleased with the number of attendees; on the Friday evening, 60 people attended in person, and 136 attended online. On the Saturday, 115 people attended in person, and 103 online. The conference received extremely positive feedback in terms of the theme, the quality of the content throughout the conference and the overall organisation of the event.

The BPC also delivered a smaller in person event for BPC registrants, discussing working clinically with gender questioning young people. The content and structure of the day was organised by the Sexual and Gender Diversity Committee; there was a discussion between Alessandra Lemma and Aidan Kelly, chaired by Louise Lyon, time for smaller break out group discussions, and a final plenary session. The event was fully booked with 70 delegates within 3 weeks of opening bookings. There was overwhelmingly positive feedback for the structure and content of the event.

Following the success of the working with gender questioning young people, and the safeguarding training, the Board have approved a new approach to events in 2023. There will be a series of smaller CPD and information sessions throughout the year, there will be no conference in 2023.

Policy

The two main areas of policy work that the BPC have progressed between April 2022 and March 2023 is the SCoPED framework project and the proposed conversion therapy ban.

The SCoPED project (the scope of practice and education for counselling and psychotherapy) is a long running collaboration between seven professional bodies in the counselling and psychotherapy sector, including the BPC, to develop a shared framework mapping out existing core competencies and practice standards for psychoanalysts, psychotherapists and counsellors working with adults. The BPC were pleased to formally adopt the SCoPED framework in early 2023. This was a significant step in addressing the confusion around the current landscape with a framework that will inform the minimum training requirements, competencies and practice standards for therapists working with adults.

The government consulted in proposals for a conversion therapy ban in March 2022, but there is yet to be a response from this consultation. The BPC worked with the Conversion Therapy Ban Coalition group as well as BACP and UKCP to better understand the possible changes the legislation could bring in, and the affect it would have on registrants as well as the protection of the public.

The BPC also continued to work with the Talking Therapies Task Force, the Coalition against Conversion Therapy, the Diversity and Inclusion Coalition, the campaign to modify the NICE guidance on depression in adults and the Coalition for Psychoanalysis in the NHS.

FINANCIAL REVIEW

Financial position

During the year, the charity's general fund income exceeded expenditure with a net income of £93,624. See pages 15 and 16 of the financial statements for details of the financial performance and position of the charity. At the period end, the charity held free reserves of £440,975.

The trustees are pleased with the level of reserves the organisation has been able to build up.

Reserves policy

The trustees take the monies of Registrants and Member Institutions and the setting of fees very seriously, and balance this with the need to maintain proportionate reserves.

It is the policy of the charity to maintain at least 6 months' of the financial year's operating cost as well as an additional £80,000. The likelihood of a significant hit to the charity arising from our regulatory function (i.e. legal cost) has become an increasingly realistic prospect, and the trustees consider this reserves policy will allow the charity to continue its current activities whilst responding to such an event.

The Board remains satisfied that the charity is a Going Concern.

The trustees have assessed the major risks to which the charity is exposed, and are satisfied that systems are in place to mitigate exposure to the major risks.

This report has been prepared in accordance with the provisions applicable to companies entitled to the small companies' exemption.

Going concern

At the time of approving the financial statements, the Trustees have a reasonable expectation that the charity has adequate resources to support the current level of expenditure and to continue in operational existence for the foreseeable future.

FUTURE PLANS

The BPC looks forward to some further staff changes within the organisation for the year ahead; a new Communications Manager as well as a new Policy Manager, resulting in an updated and comprehensive communications and policy strategy for the organisation.

The organisation will be running a public consultation on the new proposed Standards of Conduct, Performance and Ethics which, once confirmed, will replace the current Code of Ethics.

Whilst the BPC will not be holding its flagship conference, Psychoanalytic Psychotherapy Now, in 2023 it will instead be holding a series of smaller CPD and information events. These events will cover topics such as confidentiality, GDPR and safeguarding. The organisation will also be celebrating its 30th anniversary, and will be holding a drinks reception at the Freud Museum, London to mark the occasion.

The British Psychoanalytic Council (Registered number: 05034324)

**Report of the Trustees
for the Year Ended 31 March 2023**

STRUCTURE, GOVERNANCE AND MANAGEMENT

Governing document

The charity is controlled by its governing document, a deed of trust, and constitutes a limited company, limited by guarantee, as defined by the Companies Act 2006.

Recruitment and appointment of new trustees

The management of the charity are responsible for recruitment, induction and training of the trustees who are elected and co-opted under the terms of the Memorandum and Articles of Association.

Organisational structure

The trustees meet regularly to administer the day-to-day affairs of the charity. None of the trustees have any beneficial interest in the charity. All of trustees are members of the company and guarantee to contribute £1 in the event of a winding up.

Related parties

Honorarium payments are made to a minority of the trustees as their roles and responsibilities (including inputs of significant clinical expertise) go far above and beyond the usual role of a trustee. Details of the honorarium are disclosed in the charity's Articles of Association, on the basis of a decision agreed by a subcommittee formed by trustees who would not themselves be receiving payments.

REFERENCE AND ADMINISTRATIVE DETAILS

Registered Company number

05034324 (England and Wales)

Registered Charity number

1185487

Registered office

Unit 7 19-23 Wedmore Street
London
N19 4RU

Trustees

N Sternhell
L F Smith Chair
R A Serlin
P Rohleder
J D McGregor Hepburn
T Kent (resigned 27.4.23)
A D Greatley
A Colam
S A Beeken
F Roper (appointed 28.4.23)

Independent Examiner

Janine Boyo
Voisey & Co LLP
Chartered Accountants
8 Winmarleigh Street
Warrington
Cheshire
WA1 1JW

The British Psychoanalytic Council (Registered number: 05034324)

**Report of the Trustees
for the Year Ended 31 March 2023**

REFERENCE AND ADMINISTRATIVE DETAILS

Solicitors

Bates Wells & Braithwaite LLP
10 Queen Street Place
London
EC4R 1BE

Chief Executive Officer

GJ Ross-Sampson

Approved by order of the board of trustees on 16 September 2023 and signed on its behalf by:

A handwritten signature in black ink, appearing to read 'L F Smith', with a stylized flourish at the end.

L F Smith - Trustee

**Independent Examiner's Report to the Trustees of
The British Psychoanalytic Council (Registered number: 05034324)**

Independent examiner's report to the trustees of The British Psychoanalytic Council ('the Company')

I report to the charity trustees on my examination of the accounts of the Company for the year ended 31 March 2023.

Responsibilities and basis of report

As the charity's trustees of the Company (and also its directors for the purposes of company law) you are responsible for the preparation of the accounts in accordance with the requirements of the Companies Act 2006 ('the 2006 Act').

Having satisfied myself that the accounts of the Company are not required to be audited under Part 16 of the 2006 Act and are eligible for independent examination, I report in respect of my examination of your charity's accounts as carried out under Section 145 of the Charities Act 2011 ('the 2011 Act'). In carrying out my examination I have followed the Directions given by the Charity Commission under Section 145(5) (b) of the 2011 Act.

Independent examiner's statement

Since your charity's gross income exceeded £250,000 your examiner must be a member of a listed body. I can confirm that I am qualified to undertake the examination because I am a member of the Institute of Chartered Accountants in England and Wales, which is one of the listed bodies.

I have completed my examination. I confirm that no matters have come to my attention in connection with the examination giving me cause to believe:

1. accounting records were not kept in respect of the Company as required by Section 386 of the 2006 Act; or
2. the accounts do not accord with those records; or
3. the accounts do not comply with the accounting requirements of Section 396 of the 2006 Act other than any requirement that the accounts give a true and fair view which is not a matter considered as part of an independent examination; or
4. the accounts have not been prepared in accordance with the methods and principles of the Statement of Recommended Practice for accounting and reporting by charities (applicable to charities preparing their accounts in accordance with the Financial Reporting Standard applicable in the UK and Republic of Ireland (FRS 102)).

I have no concerns and have come across no other matters in connection with the examination to which attention should be drawn in this report in order to enable a proper understanding of the accounts to be reached.



Janine Boyo

Voisey & Co LLP
Chartered Accountants
8 Winmarleigh Street
Warrington
Cheshire
WA1 1JW

16 September 2023

The British Psychoanalytic Council

**Statement of Financial Activities
for the Year Ended 31 March 2023**

	Notes	31.3.23 Unrestricted funds £	31.3.22 Total funds £
INCOME AND ENDOWMENTS FROM			
Charitable activities	3		
Maintenance and regulation of professional standards		711,128	639,987
Investment income	2	597	34
Total		<u>711,725</u>	<u>640,021</u>
 EXPENDITURE ON			
Charitable activities	4		
Maintenance and regulation of professional standards		333,447	321,560
Other		284,654	203,172
Total		<u>618,101</u>	<u>524,732</u>
 NET INCOME		93,624	115,289
 RECONCILIATION OF FUNDS			
Total funds brought forward		347,351	232,062
 TOTAL FUNDS CARRIED FORWARD		<u><u>440,975</u></u>	<u><u>347,351</u></u>

CONTINUING OPERATIONS

The statement of financial activities includes all gains and losses recognised in the year.

All income and expenditure derive from continuing activities.

The statement of financial activities also complies with the requirements for an income and expenditure account under the Companies Act 2006.

The British Psychoanalytic Council (Registered number: 05034324)

**Balance Sheet
31 March 2023**

	Notes	31.3.23 Unrestricted funds £	31.3.22 Total funds £
FIXED ASSETS			
Tangible assets	9	14,418	16,507
CURRENT ASSETS			
Debtors	10	61,823	47,099
Cash at bank		988,534	868,141
		<u>1,050,357</u>	<u>915,240</u>
CREDITORS			
Amounts falling due within one year	11	(623,800)	(584,396)
NET CURRENT ASSETS		<u>426,557</u>	<u>330,844</u>
TOTAL ASSETS LESS CURRENT LIABILITIES		440,975	347,351
NET ASSETS		<u>440,975</u>	<u>347,351</u>
FUNDS	12		
Unrestricted funds		440,975	347,351
TOTAL FUNDS		<u>440,975</u>	<u>347,351</u>

The charitable company is entitled to exemption from audit under Section 477 of the Companies Act 2006 for the year ended 31 March 2023.

The members have not required the company to obtain an audit of its financial statements for the year ended 31 March 2023 in accordance with Section 476 of the Companies Act 2006.

The trustees acknowledge their responsibilities for

- (a) ensuring that the charitable company keeps accounting records that comply with Sections 386 and 387 of the Companies Act 2006 and
- (b) preparing financial statements which give a true and fair view of the state of affairs of the charitable company as at the end of each financial year and of its surplus or deficit for each financial year in accordance with the requirements of Sections 394 and 395 and which otherwise comply with the requirements of the Companies Act 2006 relating to financial statements, so far as applicable to the charitable company.

The British Psychoanalytic Council (Registered number: 05034324)

Balance Sheet - continued
31 March 2023

These financial statements have been prepared in accordance with the provisions applicable to charitable companies subject to the small companies regime.

The financial statements were approved by the Board of Trustees and authorised for issue on 16 September 2023 and were signed on its behalf by:

A handwritten signature in black ink, appearing to read 'L F Smith', followed by a small dot.

L F Smith - Trustee

The notes form part of these financial statements

The British Psychoanalytic Council

**Cash Flow Statement
for the Year Ended 31 March 2023**

	Notes	31.3.23 £	31.3.22 £
Cash flows from operating activities			
Cash generated from operations	1	122,514	117,621
Net cash provided by operating activities		<u>122,514</u>	<u>117,621</u>
Cash flows from investing activities			
Purchase of tangible fixed assets		(2,718)	(10,361)
Interest received		597	34
Net cash used in investing activities		<u>(2,121)</u>	<u>(10,327)</u>
Change in cash and cash equivalents in the reporting period		<u>120,393</u>	<u>107,294</u>
Cash and cash equivalents at the beginning of the reporting period		<u>868,141</u>	<u>760,847</u>
Cash and cash equivalents at the end of the reporting period		<u><u>988,534</u></u>	<u><u>868,141</u></u>

The notes form part of these financial statements

The British Psychoanalytic Council

**Notes to the Cash Flow Statement
for the Year Ended 31 March 2023**

1. RECONCILIATION OF NET INCOME TO NET CASH FLOW FROM OPERATING ACTIVITIES

	31.3.23 £	31.3.22 £
Net income for the reporting period (as per the Statement of Financial Activities)	93,624	115,289
Adjustments for:		
Depreciation charges	4,807	2,423
Interest received	(597)	(34)
Increase in debtors	(14,724)	(22,362)
Increase in creditors	39,404	22,305
Net cash provided by operations	<u>122,514</u>	<u>117,621</u>

2. ANALYSIS OF CHANGES IN NET FUNDS

	At 1.4.22 £	Cash flow £	At 31.3.23 £
Net cash			
Cash at bank	868,141	120,393	988,534
	<u>868,141</u>	<u>120,393</u>	<u>988,534</u>
Total	<u>868,141</u>	<u>120,393</u>	<u>988,534</u>

The notes form part of these financial statements

The British Psychoanalytic Council

Notes to the Financial Statements for the Year Ended 31 March 2023

1. ACCOUNTING POLICIES

Basis of preparing the financial statements

The financial statements of the charitable company, which is a public benefit entity under FRS 102, have been prepared in accordance with the Charities SORP (FRS 102) 'Accounting and Reporting by Charities: Statement of Recommended Practice applicable to charities preparing their accounts in accordance with the Financial Reporting Standard applicable in the UK and Republic of Ireland (FRS 102) (effective 1 January 2019)', Financial Reporting Standard 102 'The Financial Reporting Standard applicable in the UK and Republic of Ireland' and the Companies Act 2006. The financial statements have been prepared under the historical cost convention.

The reporting currency is £ Sterling. Monetary amounts in these financial statements are rounded to the nearest £.

Income

All income is recognised in the Statement of Financial Activities once the charity has entitlement to the funds, it is probable that the income will be received and the amount can be measured reliably.

Expenditure

Liabilities are recognised as expenditure as soon as there is a legal or constructive obligation committing the charity to that expenditure, it is probable that a transfer of economic benefits will be required in settlement and the amount of the obligation can be measured reliably. Expenditure is accounted for on an accruals basis and has been classified under headings that aggregate all cost related to the category. Where costs cannot be directly attributed to particular headings they have been allocated to activities on a basis consistent with the use of resources.

Allocation and apportionment of costs

During the year, the accounting system was reviewed and amended to more closely match the costs areas of the charity. In order for comparisons to be made and be relevant, the 2021 figures have been amended to new policy.

Tangible fixed assets

Depreciation is provided at the following annual rates in order to write off each asset over its estimated useful life.

Fixtures and fittings	- 25% on reducing balance
Computer equipment	- 25% on reducing balance

Taxation

The charity is exempt from corporation tax on its charitable activities.

Fund accounting

Unrestricted funds can be used in accordance with the charitable objectives at the discretion of the trustees.

Restricted funds can only be used for particular restricted purposes within the objects of the charity. Restrictions arise when specified by the donor or when funds are raised for particular restricted purposes.

Further explanation of the nature and purpose of each fund is included in the notes to the financial statements.

Pension costs and other post-retirement benefits

The charitable company operates a defined contribution pension scheme. Contributions payable to the charitable company's pension scheme are charged to the Statement of Financial Activities in the period to which they relate.

Cash and cash equivalents

Cash and cash equivalents are basic financial assets and include cash in hand, deposits held at call with bank, other short-term liquid investments with original maturities of three months or less, and bank overdrafts.

Financial instruments

The British Psychoanalytic Council

Notes to the Financial Statements - continued for the Year Ended 31 March 2023

1. ACCOUNTING POLICIES - continued

The company has elected to apply the provisions of Section 11 'Basic Financial Instruments' and Section 12 'Other Financial Instruments Issues' of FRS 102 to all of its financial instruments.

Financial instruments are recognised in the company's statement of financial position when the company becomes party to the contractual provisions of the instrument.

Financial assets and liabilities are offset, with the net amounts presented in the financial statements, when there is a legally enforceable right to set off the recognised amounts and there is an intention to settle on a net basis or to realise the net asset and settle the liability simultaneously.

Basic financial assets

Basic financial assets, which include debtors and cash and bank balances, are initially measured at transaction price including transaction costs and are subsequently carried at amortised costs using the effective interest method unless the arrangement constitutes a financing transaction, where the transaction is measured at the present value of the future receipts discounted at a market rate of interest. Financial assets classified as receivable within one year are not amortised.

Other financial assets

Other financial assets, including investments in equity instruments which are not subsidiaries, associates or joint ventures, are initially measured at fair value, which is normally the transaction price. Such assets are subsequently carried at fair value and the changes in fair value are recognised in profit or loss, except that investments in equity instruments that are not publically traded and whose fair values cannot be measured reliably are measured at cost less impairment.

Derecognition of financial assets

Financial assets are derecognised only when the contractual rights to the cash flows from the asset expire or are settled, or when the company transfers the financial asset and substantially all the risks and rewards of ownership to another entity, or if some significant risks and rewards of ownership are retained but control of the asset has transferred to another party that is able to sell the asset in its entirety to an unrelated third party.

Classification of financial liabilities

Financial liabilities and equity instruments are classified according to the substance of the contractual arrangements entered into. An equity instrument is any contract that evidences a residual interest in the assets of the company after deducting all of its liabilities. Basic financial liabilities, including creditors, bank loans, loans from fellow group companies and preference shares that are classified as debt, are initially recognised at transaction price unless the arrangement constitutes a financing transaction, where the debt instrument is measured at the present value of the future receipts discounted at a market rate of interest. Financial liabilities classified as payable within one year are not amortised.

Debt instruments are subsequently carried at amortised cost, using the effective interest rate method.

Trade creditors are obligations to pay for goods or services that have been acquired in the ordinary course of business from suppliers. Amounts payable are classified as current liabilities if payment is due within one year or less. If not, they are presented as non-current liabilities. Trade creditors are recognised initially at transaction price and subsequently measured at amortised cost using the effective interest method.

Impairment of financial assets

Financial assets, other than those held at fair value through profit or loss, are assessed for indicators of impairment at each reporting end date.

The British Psychoanalytic Council

Notes to the Financial Statements - continued for the Year Ended 31 March 2023

1. ACCOUNTING POLICIES - continued

Financial assets are impaired where there is objective evidence that, as a result of one or more events that occurred after the initial recognition of the financial asset, the estimated future cash flows have been affected. If an asset is impaired, the impairment loss is the difference between the carrying amount and the present value of the estimated cash flows discounted at the asset's original effective interest rate. The impairment loss is recognised in profit or loss.

Derecognition of financial liabilities

Financial liabilities are derecognised when the company's contractual obligations expire or are discharged or cancelled.

Equity instruments

Equity instruments issued by the company are recorded at the proceeds received, net of direct issue costs. Dividends payable on equity instruments are recognised as liabilities once they are no longer at the discretion of the company.

Employee benefits

The costs of short-term employee benefits are recognised as a liability and an expense, unless those costs are required to be recognised as part of the cost of stock or fixed assets. The cost of any unused holiday entitlement is recognised in the period in which the employee's services are received. Termination benefits are recognised immediately as an expense when the company is demonstrably committed to terminate the employment of an employee or to provide termination benefits

2. INVESTMENT INCOME

	31.3.23	31.3.22
	£	£
Deposit account interest	597	34
	<u>597</u>	<u>34</u>

3. INCOME FROM CHARITABLE ACTIVITIES

	31.3.23	31.3.22
	£	£
Membership fees	650,306	604,295
Conferences and events	32,275	26,120
Publications	4,062	3,572
Regulatory accreditation	23,000	6,000
Covid-19 Grant	1,485	-
	<u>711,128</u>	<u>639,987</u>

The British Psychoanalytic Council

**Notes to the Financial Statements - continued
for the Year Ended 31 March 2023**

4. CHARITABLE ACTIVITIES COSTS

	Direct Costs £
Maintenance and regulation of professional standards	333,447

5. SUPPORT COSTS

	Management £	Finance £	Other £	Governance costs £	Totals £
Other resources expended	256,490	167	4,806	23,191	284,654

6. NET INCOME/(EXPENDITURE)

Net income/(expenditure) is stated after charging/(crediting):

	31.3.23 £	31.3.22 £
Depreciation - owned assets	4,807	2,423
Hire of plant and machinery	-	1,769
Other operating leases	26,121	28,334
Independent examiner's fee	3,013	2,172

7. TRUSTEES' REMUNERATION AND BENEFITS

In accordance with the Articles of Association, the Charity has paid honoraria to five trustees totalling £9,250.

Included within governance costs, is £1,250 of this honorarium under "ex-trustees expenses". This amount wholly relates to work undertaken as a trustee however due to the timing of the payment can not be presented as such.

Trustees' expenses

	31.3.23 £	31.3.22 £
Trustees' expenses	3,548	2,202

Travelling expenses were incurred by 4 trustees and the claims were approved as legitimate expenses to be claimed by the trustees as described in the Articles of Association.

The British Psychoanalytic Council

**Notes to the Financial Statements - continued
for the Year Ended 31 March 2023**

8. STAFF COSTS

The key management personnel of the Charity comprise the Chief Executive Officer. The total employee benefits of the key management personnel of the charity were £95,100 excluding pension costs.

The average monthly number of employees during the year was as follows:

	31.3.23	31.3.22
Average employees in the year	7	6
	<u>7</u>	<u>6</u>

The number of employees whose employee benefits (excluding employer pension costs) exceeded £60,000 was:

	31.3.23	31.3.22
£90,001 - £100,000	1	1
	<u>1</u>	<u>1</u>

9. TANGIBLE FIXED ASSETS

	Fixtures and fittings £	Computer equipment £	Totals £
COST			
At 1 April 2022	8,290	22,343	30,633
Additions	-	2,718	2,718
	<u>8,290</u>	<u>25,061</u>	<u>33,351</u>
At 31 March 2023	8,290	25,061	33,351
DEPRECIATION			
At 1 April 2022	6,521	7,605	14,126
Charge for year	443	4,364	4,807
	<u>6,964</u>	<u>11,969</u>	<u>18,933</u>
At 31 March 2023	6,964	11,969	18,933
NET BOOK VALUE			
At 31 March 2023	<u>1,326</u>	<u>13,092</u>	<u>14,418</u>
At 31 March 2022	<u>1,769</u>	<u>14,738</u>	<u>16,507</u>

The British Psychoanalytic Council

**Notes to the Financial Statements - continued
for the Year Ended 31 March 2023**

10. DEBTORS: AMOUNTS FALLING DUE WITHIN ONE YEAR

	31.3.23	31.3.22
	£	£
Trade debtors	13,425	3,739
Other debtors	3,175	3,175
Prepayments and accrued income	45,223	40,185
	<u>61,823</u>	<u>47,099</u>

11. CREDITORS: AMOUNTS FALLING DUE WITHIN ONE YEAR

	31.3.23	31.3.22
	£	£
Trade creditors	8,525	35,103
Social security and other taxes	14,490	6,837
Accruals and deferred income	600,785	542,456
	<u>623,800</u>	<u>584,396</u>

Deferred income comprises membership received in advance of the year to which it relates.

	31.03.22
	£
Balance as at 1st April 2022	525,441
Amount released to income earned from charitable activities	(525,441)
Amount deferred in year	573,628
Balance as at 31st March 2023	<u>573,628</u>

12. MOVEMENT IN FUNDS

	At 1.4.22	Net movement in funds	At 31.3.23
	£	£	£
Unrestricted funds			
General fund	347,351	93,624	440,975
	<u>347,351</u>	<u>93,624</u>	<u>440,975</u>
TOTAL FUNDS	<u>347,351</u>	<u>93,624</u>	<u>440,975</u>

The British Psychoanalytic Council

**Notes to the Financial Statements - continued
for the Year Ended 31 March 2023**

12. MOVEMENT IN FUNDS - continued

Net movement in funds, included in the above are as follows:

	Incoming resources £	Resources expended £	Movement in funds £
Unrestricted funds			
General fund	711,725	(618,101)	93,624
TOTAL FUNDS	<u>711,725</u>	<u>(618,101)</u>	<u>93,624</u>

Comparatives for movement in funds

	At 1.4.21 £	Net movement in funds £	At 31.3.22 £
Unrestricted funds			
General fund	232,062	115,289	347,351
TOTAL FUNDS	<u>232,062</u>	<u>115,289</u>	<u>347,351</u>

Comparative net movement in funds, included in the above are as follows:

	Incoming resources £	Resources expended £	Movement in funds £
Unrestricted funds			
General fund	640,021	(524,732)	115,289
TOTAL FUNDS	<u>640,021</u>	<u>(524,732)</u>	<u>115,289</u>

A current year 12 months and prior year 12 months combined position is as follows:

	At 1.4.21 £	Net movement in funds £	At 31.3.23 £
Unrestricted funds			
General fund	232,062	208,913	440,975
TOTAL FUNDS	<u>232,062</u>	<u>208,913</u>	<u>440,975</u>

The British Psychoanalytic Council

**Notes to the Financial Statements - continued
for the Year Ended 31 March 2023**

12. MOVEMENT IN FUNDS - continued

A current year 12 months and prior year 12 months combined net movement in funds, included in the above are as follows:

	Incoming resources £	Resources expended £	Movement in funds £
Unrestricted funds			
General fund	1,351,746	(1,142,833)	208,913
	<hr/>	<hr/>	<hr/>
TOTAL FUNDS	<u>1,351,746</u>	<u>(1,142,833)</u>	<u>208,913</u>

13. EMPLOYEE BENEFIT OBLIGATIONS

The charity operates a defined contribution scheme. The assets of which are held separately from the assets of the charity in an independently administered fund. The pension cost charge represents contributions payable by the company to the fund and amounted to £22,680 (2022 £19,045).

Included in Other Creditors is the pension liability at the year end of £2,622 (2022 £1,892).

14. RELATED PARTY DISCLOSURES

There were no related party transactions for the year ended 31 March 2023.

The British Psychoanalytic Council

**Detailed Statement of Financial Activities
for the Year Ended 31 March 2023**

	31.3.23 £	31.3.22 £
INCOME AND ENDOWMENTS		
Investment income		
Deposit account interest	597	34
Charitable activities		
Membership fees	650,306	604,295
Conferences and events	32,275	26,120
Publications	4,062	3,572
Regulatory accreditation	23,000	6,000
Covid-19 Grant	1,485	-
	<hr/> 711,128	<hr/> 639,987
Total incoming resources	711,725	640,021
EXPENDITURE		
Charitable activities		
Wages	167,147	139,936
Social security	14,554	11,336
Pensions	12,071	10,872
Publications	19,224	17,977
Website and database costs	13,434	9,540
Projects and grants	100	-
Fitness to practise	10,265	19,228
Regulatory reaccreditation	5,934	1,621
Professional memberships	22,468	18,285
Temporary staff	12,274	41,755
Staff training	-	816
Recruitment costs	-	15,321
Events costs	42,777	25,709
Research projects	1,056	590
Membership costs	12,143	8,574
	<hr/> 333,447	<hr/> 321,560
Support costs		
Management		
Wages	140,300	106,385
Social security	15,642	11,423
Pensions	10,609	8,173
Hire of plant and machinery	-	1,769
Other operating leases	26,121	28,334
Carried forward	192,672	156,084

This page does not form part of the statutory financial statements

The British Psychoanalytic Council

**Detailed Statement of Financial Activities
for the Year Ended 31 March 2023**

	31.3.23 £	31.3.22 £
Management		
Brought forward	192,672	156,084
Premises costs	2,866	2,581
Insurance	3,555	3,555
Legal and professional fees	1,956	843
Office running costs	33,810	15,314
Venue hire	52	(297)
Catering and Refreshments	758	64
Staff training	1,998	756
Travel and subsistence	1,457	19
Accountancy and bookkeeping	4,646	5,734
Staffing: Recruitment Costs	12,720	-
	<hr/> 256,490	<hr/> 184,653
Finance		
Bank charges	167	92
Other		
Fixtures and fittings	442	479
Computer equipment	4,364	1,944
	<hr/> 4,806	<hr/> 2,423
Governance costs		
Trustees' honorarium	8,000	9,000
Trustees' expenses	3,548	2,202
Independent examiner's fee	3,013	2,172
Legal fees	6,541	2,586
Catering and Refreshments	273	44
Travel and subsistence	150	-
Ex-trustees Honorarium	1,250	-
Venue Hire	416	-
	<hr/> 23,191	<hr/> 16,004
Total resources expended	<hr/> 618,101	<hr/> 524,732
Net income	<hr/> <hr/> 93,624	<hr/> <hr/> 115,289

This page does not form part of the statutory financial statements