

DREAMSAI Milton Keynes

Charity Number: 1184822

Financial Statements for the year ended 31st March 2021.

Report of the Trustees for the year ended 31 March 2021.

The trustees present their annual report and independent examined financial statements for the year ended 31 March 2021 and confirm they comply with the Charities Act 1993, as amended by the Charities Act 2006, the trust deed, and the Charities SORP 2005.

Reference and Administrative Information

Charity Name	DREAMSAI Milton Keynes
Charity Registration Number	1184822
Principle Office	106, walhouse road, Walsall, West Midlands, WS1 2BE

Board of Trustees:

Lakshmana Rao Kastala (Chair)
Srinivasa Rao Velupula
Surabhi Sharan
Pramod Parepalli (until 25th oct 2020)

Independent Examiners:

Anand Associates
106, Walhouse Road
Walsall
WS1 2BE

Bankers:

HSBC Bank plc
The Bridge,
Walsall,
West Midlands
WS1 1LN

Contents

Report of the Trustees for the year ended 31 March 2021.....	4
Structure, Governance and Management	4
Governing Document.....	4
Organisation Structure.....	4
Risk Management	5
Objectives and Activities.....	5
Summary of the main activities	5
Strategies	5
Volunteer Contribution.....	6
Activities and Achievements	6
Food for SAI – Cooked Meals Project.....	7
Food Outreach – Festive Hampers, Food Parcels & School Breakfast.....	7
Blood Donation	8
Spiritual	8
Partnerships	8
Financial Review.....	8
Reserves Policy.....	8
Principal funding sources.....	8
Statement of Trustee’s responsibilities	8
Income & Expenditure Account for period ending 31 st March 2021.....	10
Balance Sheet for the period ending 31 st March 2021	11
Independent Examiners Report	12

Report of the Trustees for the year ended 31 March 2021.

Structure, Governance and Management

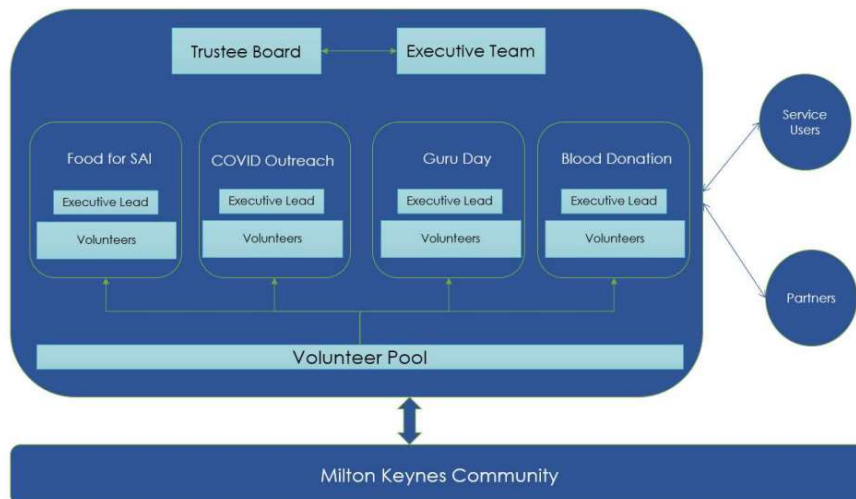
Governing Document

DREAMSAI Milton Keynes is constituted as a charitable trust registered with the Charity Commission in August 2019 under the charity number 1184822. It is governed by the deed of the trust.

Organisation Structure

Trustee Board is the ultimate accountability for the CIO, and responsible for strategic direction & organisational governance. The trustee board collaborates with executive team for the implementation. The executive team with the support of the volunteer pool operates the projects. The organisation foundations are underpinned by support from volunteers and members of Milton Keynes community.

Governance is at the heart of the strategic and operational decision making. DREAMSAI is registered with fund raising regulator. No cash policy is a modern & transparent fundraising policy successfully implemented since inception; all the monetary donations are received via digital channels only. Volunteers in contact with vulnerable members of the community are DBS checked, it is mandatory for all the volunteers handling food to be food safety certified. DREAMSAI is registered with Information Commissioner's Office (ICO) and utmost care is taken for the personal data. DREAMSAI uses Digital First strategy and minimal paper usage. Technology systems are used for operational efficiency and information governance.



Risk Management

The trustee has assessed the risk that charity faces and have drawn up a risk matrix which identifies the high/medium/low risks and its probabilities. The trustees review the risk matrix regularly at their meetings. The trustees are satisfied that systems are in place or arrangements are in hand to management the risks that have been identified – especially in the areas of Criminal Records Bureau checks, safeguarding policies and procedures, food and hygiene process and fund-raising regulations.

Objectives and Activities

The objects of the CIO are

1. The advancement of the Hindu religion for the public benefit in Milton Keynes in particular by promoting the teachings of Shirdi Saibaba as set out in the Satcharita
2. The prevention of sickness and the preservation of the health by raising awareness of the needs of donors of blood, bone marrow and stem cells within Asian and Indian Communities
3. The prevent or relief of poverty for public benefit in Milton Keynes supplying food, hygiene items, essentials to homeless and needy people in temporary sheltered accommodation.

Summary of the main activities

DREAMSAI is an inclusive charity run by the local community working for the benefit of diverse communities. DREAMSAI Milton Keynes are making profound impact on the diverse communities. Many community-led activities are initiated to positively contribute for community wellbeing and successfully motivated the residents to become more involved through volunteering. The charity's reach and impact are maximised by collaborating with various partners in the sector. DREAMSAI is a bridge in connecting and building stronger communities

Based on the teachings of Indian Saint Shirdi Sai, DREAMSAI organize spiritual events and celebrate Indian and diverse cultural festivals of various faiths, support homeless community with free cooked meal and essential items, deliver free food & essential parcels to vulnerable communities and promote blood donations from ethnic minorities.

Every week hundreds of community members attend and benefit from the spiritual & cultural activities. Thousands of home cooked hot meals are served every year to the homeless or those in temporary accommodation. Festive Hampers are distributed to those in need during diverse festivities including Diwali, Christmas & Eid demonstrating our inclusive approach. The group has also been responsive and adaptive to the changing needs of this city and addressing the gaps to meet immediate community needs – our rapid response to COVID-19 pandemic being one of them. Many lives are supported with the blood donated by DREAMSAI donors every year.

Strategies

In its current capacity DREAMSAI is fulfilling all its objectives without a base of its own. All the activities and projects are being executed from various physical premises of partners, the Trustees', & volunteers' own premises. The absence of a centralised hub /base has been an impediment in the maximising the reach & impact. The growing scale of operations would be better served by the centre which would be an anchor for not just the current projects but also for much bigger activities planned.

It is crucial for a growing city to establish infrastructure representing the demographics. It is evident that there are limited or non-existent hubs for diverse communities in Milton Keynes. DREAMSAI aspires to fill up this void by building a centre.

Apart from advancing the social cause, the centre will also host multi-faith orientated celebrations. Enacting the age-old Indian tradition of welcoming one and all, DREAMSAI, which is known for its social engineering and philanthropic activities, under the aegis of the central hub act as social glue to bring together all the diverse communities on humanitarian grounds and cultivate one-ness in multiplicity creating a unique example of creating a unity from diversity. This unparalleled act will enhance the diversity & inclusive profile of Milton Keynes

Volunteer Contribution

DREAMSAI are 100% volunteer run organisation. An organisation structure is in place for strategy, governance, and operational purposes. The Trustee Board is the ultimate accountable and decision-making body. The Board and Executive team members work hand in hand with support provided by the volunteers. The organisation foundations are underpinned by support from volunteer pool and members of Milton Keynes community.

The members of community interested to volunteer will be added to volunteer pool and then onboarded to specific projects by Executive Team. Executive Team are the leads managing Food for SAI, Food Outreach, Blood Donation and Spiritual projects. Experienced Volunteers who are interested & qualified to lead the projects will be appointed to Executive Team after due consideration. Executive Team is a route to join the Board. An exception to this is the honorary board members who will be appointed from a chose field of specialisation to benefit the organisation objectives.

DREAMSAI has 142 registered volunteers. Fifteen youth members are also doing Duke of Edinburgh (DofE) voluntary work as part of their secondary school award scheme. Volunteers provide their services to either one project or multiple projects. Volunteers are recruited upon reference to ensure enhanced suitability check. All the interested volunteers' details will be added onto the volunteer pool upon their request. The personal details of the volunteers are securely managed in the online system with appropriate access management. DBS checks are performed to the volunteers who will be interacting with service users. The volunteers managing the Food for SAI project are also required to complete the Level 2 Food & Hygiene Safety certification.

Activities and Achievements

The year has been challenging due to the COVID-19 pandemic. Despite the challenges posed by the pandemic – our group not only continued with regular projects but also doubled the hot meal donations and initiated new food parcel service to support the elderly. When the sudden lockdown has posed the challenges on the physical space our living rooms & personal garages were converted into warehouse to meet immediate need. MK Community Foundation report reveals that 64 per cent of city people do NOT believe MK is meeting the needs of its migrant communities. Some of our activities would address this challenge. All our volunteers who are working professional working 40 hours+ every week are going above and beyond their call of duty to support the social cause. It is

important to note that agile groups like ours are rising to the challenges and meeting the most immediate needs within our communities. The group has also been responsive and adaptive to the changing needs of this diverse city and addressing the gaps to meet community needs – an immediate response to COVID-19 pandemic being one of them. DREAMSAI services are available to anyone within the local community, independent of their race, colour, age, or sex. Humanity is at the heart of everything they do.

All services are funded by voluntary digital donations or corporate donations or funding. DREAMSAI is one of the first organisations to accept digital only donations since inception for modernization, streamlining of the financial accountability. DREAMSAI is registered with Fund Raising Regulator and adheres to the recommended guidelines.

Food for SAI – Cooked Meals Project

Homelessness has become a major issue in Milton Keynes over the last few years. According to Vital Signs 2019, a report published by the MK Community Foundation, 1 in every 117 people in Milton Keynes are homeless. Many organisations in MK are providing various services to end Homelessness but there is a gap for hot meal service. DREAMSAI started with delivering 25 meals every Saturday in April 2018 – but based on the demand the numbers have increased to 120 (almost an increase of 5 times) by 2021. The guests who are homeless or in temporary accommodations in Milton Keynes are dependent on the service every weekend.

Food Outreach – Festive Hampers, Food Parcels & School Breakfast

As lockdown was announced in March 2020, DREAMSAI has launched the food parcel service to support the elderly in self-isolation. The service was later extended to support everyone in need. Every guest who reached out to DREAMSAI during these unprecedented times has received support with complete discretion, no judgement, or questions. A survey performed with the food parcel recipients - 87% elderly guests responded that they haven't received support from any other agency and would have struggled without support from DREAMSAI. The list of organisations sending requests for food parcels to DREAMSAI is ever increasing.

Festive Hampers are delivered to guests celebrating festivals including Christmas, Easter, Eid & Diwali.

One in five city children are still living below the poverty line - and the problem is getting worse. Victims of domestic violence is on growth with guests placed in temporary accommodation. Many organisations need support for the guests waiting for universal credits. Two different types of food parcels are delivered weekly, free of charge, to school children. Breakfast is the most important meal of the day, but the number of children facing food poverty has continued to rise in MK, mirroring what is happening nationally - and the Covid-19 pandemic is contributing to this surge. DREAMSAI delivered a weekly breakfast parcel to various local primary schools during school term. These food parcels contained cereals packs and milk sufficient for a week. Since start of the pandemic DREAMSAI have been giving free essential food parcels to families with children during term holidays and summer holidays. The project has delivered over 6500 parcels which enabled our vulnerable communities to have 100,000 meals on dinner tables. 4000+ PPE were distributed to local BAME communities identified as high-risk group

Blood Donation

As per report published by NHS Blood & Transplant, fewer than 5% of blood donors who gave blood are from ethnic communities. This is despite BAME communities representing around 14% of the population. DREAMSAI aim is to try and readdress this imbalance. Since the launch of our project, many Indian community members in Milton Keynes area have registered to donate blood. 80% of those donated blood through our call out confirmed that they have never given blood in their life and did it for the first time through DREAMSAI. A positive impact of this initiative.

Spiritual

As per 2011 census Milton Keynes has 3.3% Indian population. There is a significant growth in the last decade, estimations indicate that the growth of these communities would double by next census. Milton Keynes as a new city does not have infrastructure to meet the changing demographics. It is crucial to build the facilities for the cultural wellbeing of these communities. DREAMSAI is leading an initiative to build a temple & community centre where all the above services can be centralised and will be an epitome of humanity. The cultural and spiritual activities organised by DREAMSAI in rented premises are usually experienced by 80 – 100 community members every week. Due to the pandemic the services have been moved to telecast only online live.

Partnerships

As an inclusive group, the charity developed positive partnerships with many national & local organisations to collaborate and provide joined up services to widen the reach and impact while minimizing the duplication.

Financial Review

Reserves Policy

The trustees have reviewed the reserves of the charity, Their policy is to hold enough to meet six months operating costs.

Principal funding sources

The financial donations are only accepted using digital channels since inception, making this charity a pioneer in using this model. Majority of the donations are received using payment options provided on the website or using the card machine at the spiritual events conducted every Thursday. Corporate partner funding is another source of income. In addition to the financial donations, the charity also receives the food donations from partners like food bank, local super markets and the communities. The charity is governed by the fund raising regulator.

Statement of Trustee's responsibilities

The charity trustees are responsible for preparing an annual report and financial statements in accordance with applicable law and United Kingdom Accounting standards (United Kingdom Accepted Accounting Practice)

The law applicable to charities in England and Wales requires the charity trustees to prepare financial statements for each year which give a true and fair view of the state of affairs of the charity and of the incoming resources and application of resources of the charity for that period. In preparing the financial statements the trustees are required to:

Select suitable accounting policies and then apply them consistently; observe the methods and principle in the Charities SORP;

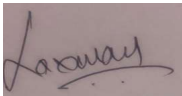
Make judgements and estimates that are reasonable and prudent; state where applicable accounting standards have been followed, subject to any material departures disclosed and explained in the financial statements;

Prepare the financial statements on the going concern basis unless it is inappropriate to presume that the charity will continue in business

The trustees are responsible for keeping proper accounting records that disclose reasonable accuracy at any time the financial position of the charity and to enable them to ensure that the financial statements comply with the Charities Act 1993, the charity (Accounts and Reports) Regulations Act 2008 and the provisions of the trust deed. They are also responsible for safeguarding the assets of the charity hence taking reasonable steps for the prevention and detection of the fraud and other irregularities.

The trustee for the purposes of charity law who served during the year up to the date of this report are set out in page 1.

Approved by the trustees and signed on the behalf by:

A handwritten signature in blue ink, appearing to read "Lakshmana", on a light-colored background.

Lakshmana Rao Kastala (Chair)

15/11/2021


Income & Expenditure Account for period ending 31st March 2021.

Dreamsai Milton Keynes Ltd									
<u>Income & Expenditure account</u>									
<u>For the year ended</u>									
<u>2020</u>		<u>31 March 2021</u>		<u>2021</u>					
		<u>Restricted</u>		<u>Unrestricted</u>		<u>Totals</u>			
20,326	Total Income		190,416		43,809			234,225	
	Less Expenses								
6,495	Charity - Food for Sai	139,890		-			139,890		
7,988	Spiritual Activities	6,349		-			6,349		
	VAN	27,563		-			27,563		
620	Clothings	-		-			-		
1,224	General administration	-	173,802	4,298	4,298	4,298	4,298	178,100	
	Net Surplus		16,614		39,511			56,125	
-	Other Income - Interest		-		7		7		
<u>£ 3,999</u>	<u>Total surplus</u>		<u>£ 16,614</u>		<u>£ 39,518</u>			<u>£ 56,132</u>	

Balance Sheet for the period ending 31st March 2021

<u>Dreamsai Milton Keynes Ltd</u>	
<u>Balance Sheet as at</u>	<u>31 March 2021</u>
<u>2020</u>	<u>2021</u>
	Fixed Assets
-	VAN
	27,563
9,517	Balance Bank
	44,486
-	Bills Payable
	6,400
<u>£ 9,517</u>	<u>£ 65,649</u>
	Reserves
5,518	B/f
	9,517
3,999	Surplus for the period
	56,132
<u>9,517</u>	<u>65,649</u>

Independent Examiners Report

Independent Examiner's Report on the Accounts			
Report to the trustees/ members of	Dreamsai Milton Keynes		
On accounts for the year ended	31 March 2021	Charity no	1184822
Set out on pages	10-11		
	I report to the trustees on my examination of the accounts of the above charity for the year ended 31 st March 2021		
Responsibilities and basis of report	<p>As the charity's trustees, you are responsible for the preparation of the accounts in accordance with the requirements of the Charities Act 2011 ("the Act").</p> <p>I report in respect of my examination of the Trust's accounts carried out under section 145 of the 2011 Act and in carrying out my examination, I have followed all the applicable Directions given by the Charity Commission under section 145(5)(b) of the Act.</p>		
Independent examiner's statement	<p>I have completed my examination. I confirm that no material matters have come to my attention in connection with the examination</p> <p>I have no concerns and have come across no other matters in connection with the examination to which attention should be drawn in this report in order to enable a proper understanding of the accounts to be reached.</p>		
Signed:			Date: 12/11/2021
Name:	V Anand		
Relevant professional qualification(s) or body (if any):	BA., LLB., ACMA., CIA		
Address:	106 Walhouse Road		
	Walsall		
	WS1 2BE		