

# DREAMSAI MILTON KEYNES

England & Wales · Charity number 1184822

## Details

---

**Status** Registered

**Legal form** CIO

**Registered** 2019-08-08

**Register** [View on the Charity Commission register](#)

## Contact

---

**Address** 106 Walhouse Road  
Walsall  
WS1 2BE

**Phone** 01908033541

**Email** [admin@dreamsai.org](mailto:admin@dreamsai.org)

**Website** [www.dreamsai.org](http://www.dreamsai.org)

## Activities

---

**Objects:** THE OBJECTS OF THE CIO ARE: 1. THE ADVANCEMENT OF THE HINDU RELIGION FOR THE PUBLIC BENEFIT IN MILTON KEYNES, IN PARTICULAR BY PROMOTING THE TEACHING OF SHIRDI SAI BABA, AS SET OUT IN THE SATCHARITA;2. THE PREVENTION OF SICKNESS AND THE PRESERVATION OF HEALTH BY RAISING AWARENESS OF THE NEEDS OF DONORS OF BLOOD, BONE MARROW AND STEM CELLS WITHIN ASIAN / INDIAN COMMUNITIES;3. THE PREVENT OR RELIEF OF POVERTY FOR PUBIC BENEFIT IN MILTON KEYNES BY SUPPLYING FOOD, HYGIENE ITEMS, ESSENTIALS TO HOMELESS AND NEEDY PEOPLE IN TEMPORARY SHELTERED ACCOMMODATION.

**Activities:** We are a local charity doing inclusive work with diverse communities. Based on the teachings of Indian Saint Shirdi Sai, we support homeless community with cooked food and essential items, deliver free food parcels to vulnerable families, promote blood donations from ethnic minorities, organize spiritual events for Shirdi Saibaba and celebrate Indian and diverse festivals of various faiths.

## Classification

---

- **How:** Provides Services
- **What:** General Charitable Purposes, Education/training, The Prevention Or Relief Of Poverty, Religious Activities, Arts/culture/heritage/science, Recreation
- **Who:** Children/young People, People Of A Particular Ethnic Or Racial Origin, The General Public/mankind

## Geography

---

- Buckinghamshire
- Milton Keynes

## Finances

---

Period end	Income	Expenditure	Assets	Employees
2025-03-31	£306,293	£230,635	-	-
2024-03-31	£361,791	£413,371	-	-
2023-03-31	£185,504	£150,236	-	-
2022-03-31	£162,399	£142,214	-	-
2021-03-31	£234,225	£178,100	-	-

## Trustees

---

Name	Role	Appointed
Lakshmana Rao Kastala	Chair	2018-03-16
Srinivasa Rao Velupula		2018-07-19
Surabhi Sharan		2018-07-19

**DREAMSAI MILTON KEYNES**

England & Wales - Charity number 1184822

---

# Accounts

---

# *DREAMSAI Milton Keynes*

## *Charity Number: 1184822*

Trustee Annual Report & Financial Statements for the year  
ended 31<sup>st</sup> March 2025

**Report of the Trustees for the year ended 31 March 2025.**

The Trustees present their Annual Report and the independently examined financial statements for the year ended 31 March 2025. The Trustees confirm that the report and financial statements have been prepared in accordance with the Charities Act 2011, the charity's deed of trust, and the Charities Statement of Recommended Practice (FRS 102).

**Reference and Administrative Information**

Charity Name	DREAMSAI Milton Keynes
Charity Registration Number	1184822
Registered Office	106, Walhouse road, Walsall, West Midlands, WS1 2BE
Principal Office	12-13, Winchester Circle, Kingston, Milton Keynes, MK10 0BA

**Board of Trustees:**

Lakshmana Rao Kastala (Chair)  
Srinivasa Rao Velupula, Treasurer  
Surabhi Sharan

**Independent Examiners:**

Anand Associates  
106, Walhouse Road  
Walsall  
WS1 2BE

**Bankers:**

HSBC Bank plc  
The Bridge,  
Walsall,  
West Midlands  
WS1 1LN

## Contents

Report of the Trustees for the year ended 31 March 2025.....	4
Chair’s Forward.....	4
Structure, Governance and Management .....	4
Governing Document.....	4
Organisation Structure.....	4
Governance and Risk Management.....	5
Objectives and Activities.....	6
Summary of the main activities .....	6
Strategy and Future Direction.....	7
Volunteer Contribution.....	7
Activities and Achievements.....	8
Temple & Community Centre .....	9
Food for Sai .....	9
Cooked Meals for the Homeless .....	9
School Breakfast Packs.....	10
Interfaith Hampers.....	10
Food Parcels.....	10
School Cultural Days .....	10
Health & Wellbeing.....	10
Mandir MedTalks .....	10
Arts & Culture .....	11
Blood Donation .....	11
Partnerships.....	11
Financial Review.....	11
Reserves Policy.....	11
Principal funding sources.....	11
Statement of Trustee’s responsibilities .....	12
Income & Expenditure Account for period ending 31 <sup>st</sup> March 2025.....	13
Balance Sheet for the period ending 31 <sup>st</sup> March 2025 .....	14
Tangible Assets.....	14
Independent Examiners Report .....	15
<b>Independent examiner's report on the accounts.....</b>	<b>15</b>
Independent examiner's statement .....	16

## Report of the Trustees for the year ended 31 March 2025.

### Chair's Forward

This year has been one of quiet but significant evolution for DREAMSAI.

As Trustees, we have had the privilege of witnessing how an organisation born from faith, compassion, and volunteer goodwill continues to mature into a resilient and responsible institution. While our activities and reach have grown, what has mattered most this year is not scale alone, but the quality of service, leadership, and stewardship behind that growth.

Rooted in the teachings of Shirdi Saibaba, DREAMSAI's work has always been guided by humility, inclusiveness, and service without judgement. As Chairman, I have been particularly mindful of the responsibility that comes with leading a charity that touches many lives spiritually, socially, and practically. This year required us to look inward as much as outward: to strengthen leadership, improve governance, and ensure that our foundations remain strong as expectations increase.

I am deeply grateful to my fellow Trustees, our leadership team, and every volunteer who continues to give their time selflessly. DREAMSAI's journey is not about individuals, but about a collective commitment to serve with dignity and compassion. **Lakshmana Rao Kastala, Founder & Chairman of Board of Trustees**

## Structure, Governance and Management

### Governing Document

DREAMSAI Milton Keynes is constituted as a charitable incorporate organisation (CIO) and registered with the Charity Commission in August 2019 under the charity number 1184822. It is governed by the constitution.

### Organisation Structure

The Trustee Board holds ultimate accountability for DREAMSAI and is responsible for the charity's strategic direction, governance, and compliance. Trustees provide oversight to ensure that the charity operates in accordance with its charitable purposes, governing document, and regulatory obligations, while safeguarding its long-term sustainability.

The Trustee Board works in close collaboration with the executive leadership team, which is responsible for translating strategic priorities into delivery. The executive team, supported by structured volunteer operational teams manages the day-to-day running of the organisation across its temple, charity, and community activities.

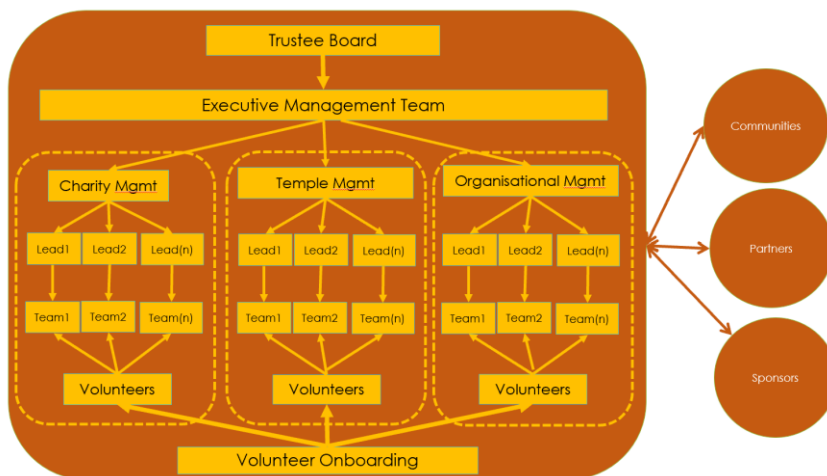
DREAMSAI is fundamentally volunteer-led, with its foundations underpinned by the commitment and support of volunteers, partners, donors, and members of the wider community. Clear lines of accountability, delegation, and role clarity are in place to support effective decision-making while maintaining the charity's values-led and inclusive culture.

Governance is embedded at the heart of both strategic and operational decision-making. DREAMSAI is registered with the Fundraising Regulator and adheres to its Code of Fundraising Practice. A strict

no-cash policy has been in place since inception, ensuring transparency and accountability, with all monetary donations received through secure digital channels.

Safeguarding, health and safety, and data protection are integral to DREAMSAI’s operating model. Volunteers working with vulnerable individuals are subject to appropriate DBS checks, and all volunteers involved in food preparation and handling are required to complete Food Safety Level 2 certification. DREAMSAI is registered with the Information Commissioner’s Office (ICO) and takes the protection of personal data seriously, supported by appropriate policies, controls, and digital systems.

The organisation follows a digital-first approach, minimising paper usage and leveraging technology to support operational efficiency, information governance, and transparency. Technology systems are used to manage volunteers, communications, reporting, and compliance, enabling DREAMSAI to operate at scale while maintaining strong governance standards.



## Governance and Risk Management

The Trustees are responsible for ensuring that DREAMSAI has effective governance and risk management arrangements in place. The Trustees have assessed the principal risks faced by the charity and maintain a risk matrix which identifies high, medium, and low risks, together with their likelihood and potential impact. This risk matrix is reviewed regularly at Trustee meetings and updated as the organisation evolves.

The Trustees are satisfied that appropriate systems, controls, and procedures are in place, or are being further strengthened where required, to manage the risks identified. Particular focus is given to safeguarding and compliance in key operational areas, including criminal records (DBS) checks, safeguarding policies and procedures, health and safety, fire risk assessments, food hygiene processes, and adherence to fundraising regulations.

During the year, Trustees continued to strengthen DREAMSAI’s governance arrangements in line with the charity’s growth and expanding activities. Particular emphasis was placed on clarifying roles, strengthening leadership capability, and reinforcing shared responsibility across teams, while preserving the charity’s values-led and volunteer-driven culture.

The Trustees view governance as an enabling framework that supports the safe, transparent, and sustainable delivery of DREAMSAI’s mission. This ensures that faith-inspired service and compassion-led activities are underpinned by appropriate accountability, risk awareness, and good practice,

consistent with the charity's responsibilities to beneficiaries, volunteers, regulators, and the wider public.

The Trustees confirm that no material governance, safeguarding, health and safety, or regulatory incidents arose during the reporting period that required disclosure.

## Objectives and Activities

The objects of the CIO are :

1. The advancement of the Hindu religion for the public benefit in Milton Keynes in particular by promoting the teachings of Shirdi Saibaba as set out in the Satcharita
2. The prevention of sickness and the preservation of the health by raising awareness of the needs of donors of blood, bone marrow and stem cells within Asian and Indian Communities
3. The prevent or relief of poverty for public benefit in Milton Keynes supplying food, hygiene items, essentials to homeless and needy people in temporary sheltered accommodation.

These objects were advanced during the year through the operation of the Temple and Community Centre, Food For Sai programmes, health and wellbeing initiatives, and blood donation campaigns

## Summary of the main activities

DREAMSAI continues to be an inclusive, community-led charity rooted in faith, service, and compassion, working for the benefit of all communities in and around Milton Keynes. During the year, the charity further strengthened its role as a trusted community anchor, delivering spiritual, charitable, and wellbeing services through a growing and diverse volunteer base.

Community-led activities remained central to DREAMSAI's work, supporting wellbeing, social connection, and inclusion. The charity continued to encourage residents of all ages and backgrounds to engage through volunteering and service, while strengthening collaboration with local charities, schools, health partners, and community organisations. These partnerships have enabled DREAMSAI to widen its reach, share learning, and reduce duplication, reinforcing its role as a bridge between communities.

DREAMSAI operates the Shri Shirdi Saibaba Temple and Community Centre in Milton Keynes, a registered place of worship that is open every day of the year and welcomes people of all faiths and those without faith too. The Temple celebrates a wide range of cultural and religious festivals alongside regular worship, reflecting the diversity of the communities it serves. All day-to-day temple operations are delivered by trained volunteers, including aarti, bhajans, prashad preparation and serving, facilities management, procurement, and coordination, with specialist priest services provided externally where required.

Alongside its spiritual services, DREAMSAI continued to deliver extensive charitable activity inspired by the teachings of Shirdi Saibaba. Through its Food For Sai initiatives, the charity supported individuals experiencing homelessness, families facing hardship, vulnerable elderly residents, and schoolchildren through free cooked meals, food parcels, school breakfast support, and emergency assistance. These services responded directly to ongoing cost-of-living pressures and food insecurity across Milton Keynes.

Health and wellbeing initiatives also formed an important part of the charity's activities during the year. DREAMSAI introduced MedTalks to provide accessible health awareness sessions for the

community, supported blood donation initiatives within underrepresented groups, and continued to engage young people through structured volunteering and Duke of Edinburgh (DofE) participation. Together, these activities reflect DREAMSAI's holistic approach to wellbeing addressing spiritual, physical, and social needs.

Feedback received during the year reflects the impact of these activities. One visitor shared: *"Dream Sai's Saibaba Temple in Milton Keynes is run with great care and professionalism. I am deeply grateful to the volunteers and priests for creating a meaningful and memorable experience at the temple."*

The Trustees believe that DREAMSAI's activities during 2024–25 demonstrate clear public benefit, delivered through compassion-led service, strong volunteer commitment, and inclusive community engagement.

## Strategy and Future Direction

During the year, Trustees refined DREAMSAI's strategic focus in response to the charity's growth, increasing responsibility, and expanding impact. Rather than prioritising expansion alone, the emphasis shifted towards leadership maturity, sustainability, and volunteer resilience, ensuring that services remain safe, inclusive, and responsive to genuine community need.

A key strategic priority was the continued development of leadership capacity across the organisation. Trustees consciously focused on progressing from founder-led delivery to leadership-led sustainability, strengthening delegation, accountability, and shared ownership across teams. This was seen as essential to long-term resilience, risk management, and continuity of services.

Volunteers remain central to DREAMSAI's operating model, and Trustees therefore placed particular emphasis on volunteer resilience and sustainability. Strategic focus was given to improving induction, training, role clarity, and leadership support, recognising that sustained daily operations require structure as well as goodwill. This approach aims to reduce reliance on small core groups, support volunteer wellbeing, and ensure that service remains fulfilling and sustainable.

Responding to evolving community need also formed a core part of the charity's strategy. Trustees were mindful that community challenges extend beyond food poverty alone, leading to the introduction of initiatives such as MedTalks to address health awareness and wellbeing. These initiatives complement existing spiritual and charitable services and reflect DREAMSAI's broader understanding of community wellbeing.

Strengthening partnerships was another key strategic priority. Trustees recognised that collaboration with other charities, health bodies, and community organisations enables DREAMSAI to increase impact while avoiding duplication. This approach led to the initiation of programmes delivered in association with external organisations, enhancing reach while remaining aligned with DREAMSAI's values and mission.

Together, these strategic priorities reflect a shift from growth-led expansion to purposeful, sustainable development, positioning DREAMSAI to continue serving its communities effectively while strengthening its organisational foundations for the future.

## Volunteer Contribution

DREAMSAI is a 100% volunteer-run organisation, and volunteers remain at the heart of everything it does. As at 31 March 2025, the charity was supported by 729 registered volunteers, with 24.4% being young volunteers. Each week, hundreds of volunteers contribute their time, skills, and energy across the charity's spiritual, charitable, and organisational activities.

The scale of volunteer contribution is particularly significant given that most volunteers balance their involvement with full-time employment, education, or caring responsibilities. The Trustees recognise that the collective number of volunteer hours contributed during the year represents an extraordinary commitment and is fundamental to the charity's ability to operate daily services.

Volunteers support a wide range of activities within the Temple, including aarti, bhajans, prashad preparation and serving, facilities management, procurement, inventory, and festival support. Across the charity's food and community programmes, volunteers prepare food parcels and cooked meals, manage procurement and stock, coordinate logistics, deliver food to families and individuals in need, and support emergency and ad-hoc responses.

In addition to front-line service, volunteers also contribute to essential organisational functions, including partnership engagement, blood donation initiatives, youth activities, digital communications, policy review, data protection, helpline support, fundraising, financial administration, and the maintenance of operational systems.

During the year, Trustees continued to strengthen the organisational structure to support volunteer effectiveness and leadership development. Teams were aligned across three core areas: Food Charity, Temple, and Organisational Support, creating a clearer and more sustainable operating model. Opportunities for progression into leadership roles were supported through experience, mentoring, and responsibility, contributing to succession planning and organisational resilience.

Youth engagement remains a defining feature of DREAMSAI's volunteer model. Young volunteers contributed across many activities, including structured participation through the Duke of Edinburgh (DofE) Award scheme. Trustees view this as both a contribution to current service delivery and an investment in future community leadership.

Safeguarding and volunteer wellbeing continue to be prioritised. DBS checks are undertaken where volunteers interact with vulnerable individuals, and all volunteers involved in food preparation are required to complete Food Safety Level 2 certification. Volunteer data is managed securely through digital systems with appropriate access controls.

Feedback received during the year reflects the culture of service and humility within the organisation. One visitor observed: "It's not just the temple that brings a sense of peace, but the people who serve there with humility and dedication. We are truly thankful to be connected to this place."

The Trustees wish to record their sincere gratitude to every volunteer. DREAMSAI's ability to deliver daily services with dignity, consistency, and compassion is entirely dependent on their generosity and commitment.

## Activities and Achievements

During the year, DREAMSAI continued to deliver a wide range of spiritual, charitable, cultural, and community wellbeing activities, all led and delivered by volunteers. As a community-rooted organisation, DREAMSAI's work remained focused on reducing social inequalities, strengthening

community cohesion, and responding compassionately to evolving local needs. All activities were delivered inclusively, engaging people from diverse backgrounds, beliefs, and generations.

## Temple & Community Centre

The Shri Shirdi Saibaba Temple and Community Centre continued to operate as the heart of DREAMSAI's activities and as a central hub for spiritual, cultural, and charitable engagement. Open every day of the year, the Temple welcomes visitors from across Milton Keynes and beyond, offering a space for prayer, reflection, service, and community connection.

Rooted in the teachings of Shirdi Saibaba particularly Shraddha (faith) and Saburi (patience) the Temple's daily rituals and activities promote spiritual growth, humility, and collective wellbeing. For many devotees unable to visit Shirdi in India, the Temple provides a spiritually familiar and accessible experience within the UK, offering a peaceful sanctuary for meditation and reflection.

All temple operations are delivered by trained volunteers, including aarti, bhajans, prashad preparation and serving, facilities management, procurement, inventory, and event coordination, with specialist priest services provided externally where required. The Prasadalya (dining hall) continued to serve freshly prepared prashad free of charge, twice daily, fostering inclusion, dignity, and a strong sense of belonging.

During the year, the Temple hosted an expanded programme of cultural and religious celebrations, reflecting the diverse Indian population of Milton Keynes. In addition to established festivals, celebrations were broadened to meet the needs of different regional, linguistic, and cultural communities. These included Sankranti/Bhogi, Lohri and Vaisakhi, Ugadi, Holi, Gudi Padwa, Guru Purnima, Ram Navami, Diwali, Christmas, Ganesh Chaturthi, and Dasara. The Temple also hosted Sai Sandhya events in nearby towns, extending spiritual and cultural engagement beyond Milton Keynes.

## Food for Sai

In response to the ongoing cost-of-living crisis, DREAMSAI's Food For Sai initiatives continued to play a vital role in supporting individuals and families experiencing food insecurity. These programmes supported homeless individuals, families with school-aged children, older people, and those facing financial hardship

### Cooked Meals for the Homeless

The Cooked Meals project continued to serve freshly prepared meals every Saturday to individuals experiencing homelessness or living in temporary accommodation. Meals were prepared in the Temple kitchen and distributed at Buszy (the former bus station in Central Milton Keynes), as well as to shelters supporting refugees, survivors of domestic abuse, and people in crisis.

Over the year, 4,160 hot meals were prepared and served, supported by a dedicated core team of volunteers and a wider pool of rotating helpers. The project maintained a diverse menu, including Indian and Western meals, all prepared to meet dietary needs, including vegan and nut-free options.

## School Breakfast Packs

The School Breakfast Project continued to support eight local schools, providing 1,800 litres of milk and 700 packs of cereals during the year. Breakfast packs and holiday food parcels were also provided, helping pupils start the day nourished and ready to learn.

## Interfaith Hampers

Based on SAI teachings of 'Sabka Malik Ek', we distribute festive hampers for Diwali, Eid, Christmas & Easter enabling the communities their special festivals. These hampers bring joy and support to families during these important times, fostering a sense of unity and inclusiveness.

## Food Parcels

The Food Parcels project, established during the pandemic, remained a critical support service during the reporting period. Approximately 1,200 food parcels were delivered during the year to households across Milton Keynes. Volunteers were involved across procurement, sorting, packing, and delivery, ensuring parcels were nutritious, timely, and delivered with care.

Delivery teams covered 28 areas of Milton Keynes, serving around 100 families each month, with additional ad-hoc deliveries for urgent need. Volunteers frequently reported meaningful connections with recipients, reinforcing dignity and trust.

## School Cultural Days

We participate in many school cultural days to showcase Indian culture and we firmly believe that by celebrating our differences, we pave the way for a more inclusive and understanding society. We invite community groups into mandir and participate in city forums to representing the positive contribution of temple & charity in Milton Keynes.

## Health & Wellbeing

Recognising that community wellbeing extends beyond food and faith, DREAMSAI introduced new initiatives during the year to address wider health and social needs.

## Mandir MedTalks

Mandir MedTalks were launched as a new programme, delivering monthly health awareness sessions led by doctors and NHS professionals on topics relevant to the community, including menopause, general health, and wellbeing. These sessions were well attended and reflected a growing appetite for accessible, trusted health information.

In partnership with CommuniTea, DREAMSAI also hosted Mental Health and Wellbeing workshops, using community spaces to encourage open discussion, reduce stigma, and promote emotional wellbeing in a culturally sensitive way.

## Arts & Culture

DREAMSAI continued to provide a platform for arts, culture, and creativity within the community. Cultural performances, workshops, and community events enabled individuals and groups to share traditions, talents, and stories, strengthening cultural pride and mutual understanding.

Youth engagement remained a core strength, with young volunteers contributing across food projects, events, logistics, and community workshops, including Duke of Edinburgh (DofE) volunteering. A Clay Ganesha Workshop was particularly well received, combining creativity, learning, and environmental awareness.

A parent commented: *“A heartfelt thank you to the organisers of the Clay Ganesha Workshop. The children had a wonderful time creating eco-friendly Ganeshas, combining creativity and learning in a meaningful way.”*

## Blood Donation

DREAMSAI continued to collaborate with NHS Blood & Transplant and other charities to promote blood donation within underrepresented communities addressing critical shortages of ethnically matched blood.

## Partnerships

The charity also maintained and strengthened partnerships with local authorities, schools, charities, community organisations, and corporate supporters. These collaborations enabled joined-up services, wider reach, shared learning, and reduced duplication, while maintaining DREAMSAI’s volunteer-led ethos.

The Trustees are proud of the breadth and depth of activities delivered during 2024–25. These achievements reflect not only the scale of volunteer commitment, but also DREAMSAI’s continued evolution into a mature, resilient organisation capable of responding compassionately and responsibly to community need.

## Financial Review

### Reserves Policy

The policy is to hold unrestricted reserves sufficient to cover approximately six months of core operating expenditure. This level is considered appropriate to provide resilience against unforeseen events, fluctuations in income, unexpected increases in demand for services, or short-term operational disruption, while avoiding the accumulation of excessive reserves.

The Trustees review the level of reserves on an annual basis as part of the budgeting and risk management process, taking into account current activities, projected commitments, and the principal risks faced by the charity. Where reserves fall outside the target range, the Trustees will consider appropriate action to restore or rebalance reserves over a reasonable period.

### Principal funding sources

DREAMSAI is funded entirely through voluntary support. Since inception, the charity has operated a digital-only donations model, accepting no cash donations. This approach has strengthened

transparency, accountability, and good governance, and positions the charity as an early adopter of modern, secure fundraising practices.

The majority of financial donations are received through card payments at the Temple and via secure online payment facilities provided through the charity's website. In addition, DREAMSAI receives funding through corporate partnerships and grant support, which contribute to the sustainability of its charitable activities.

Alongside financial donations, the charity also benefits from significant in-kind support, particularly food donations received from partner organisations such as food banks, local supermarkets, businesses, and members of the community. These donations play an important role in enabling the delivery of food parcels, cooked meals, school breakfast support and temple prashad. DREAMSAI is registered with the Fundraising Regulator and adheres to the Code of Fundraising Practice, ensuring that all fundraising activity is carried out in a responsible, transparent, and ethical manner.

## Statement of Trustee's responsibilities

The Trustees are responsible for preparing the Trustees' Annual Report and the financial statements in accordance with applicable law and United Kingdom Accounting Standards. The law applicable to charities in England and Wales requires the Trustees to prepare financial statements for each financial year which give a true and fair view of the charity's financial activities during the year and of its financial position at the end of the year. In preparing these financial statements, the Trustees are required to:

- select suitable accounting policies and apply them consistently;
- observe the methods and principles of the Charities Statement of Recommended Practice (FRS 102);
- make judgements and estimates that are reasonable and prudent;
- state whether applicable accounting standards have been followed, subject to any material departures disclosed and explained in the financial statements; and
- prepare the financial statements on a going concern basis unless it is inappropriate to presume that the charity will continue in operation.

The Trustees are responsible for keeping proper accounting records that disclose, with reasonable accuracy at any time, the financial position of the charity and enable them to ensure that the financial statements comply with the Charities Act 2011 and the Charities (Accounts and Reports) Regulations 2008. The Trustees are also responsible for safeguarding the assets of the charity and for taking reasonable steps for the prevention and detection of fraud and other irregularities.

The Trustees who served during the year and up to the date of approval of this report are listed on page 1.

**This report was approved by the Trustees and signed on their behalf by:**

A handwritten signature in blue ink, appearing to read "Lakshmana", with a horizontal line underneath.

**Lakshmana Rao Kastala BEM (Chair)**

**30/12/2025**

## Income & Expenditure Account for period ending 31<sup>st</sup> March 2025

Income & Expenditure account			31 March 2025		
For the year ended					
2024			2025		
Restricted	Unrestricted	Totals	Restricted	Unrestricted	Totals
266,945	101,985	368,930			
			84,412	220,654	305,067
63,091	43,871	106,962			
-	68,966	68,966	84,412	18,241	102,653
122,738	60,531	183,270	-	46,835	46,835
			-	2,424	2,424
			-		
-	185,830	61,312	-	78,723	78,723
	234,681	61,312	84,412	146,223	230,635
	81,115	-	-	74,431	74,431
	132,695	-			
-	503	503	-	1,226	1,226
£ 81,115	-£ 132,192	-£ 51,077	£ -	£ 75,657	£ 75,657

## Balance Sheet for the period ending 31<sup>st</sup> March 2025

<b>Dreamsai Milton Keynes</b>		
<b>Balance Sheet as at</b>		<b>31 March 2025</b>
<b>2024</b>		<b>2025</b>
	Fixed Assets	
15,818	VAN	15,818
33,324	Balance Bank	108,981
-	Bills Payable	-
<u>£ 49,142</u>		<u>£ 124,799</u>
	Reserves	
100,219	B/f	49,142
- 51,077	Surplus / ( Deficit -) for the period	<u>75,657</u>
<u>49,142</u>		<u>£ 124,799</u>

### Tangible Assets

<b>Tangible fixed assets</b>				
	<b>Land and buildings</b>	<b>Plant and machinery etc</b>	<b>Motor vehicles</b>	<b>Total</b>
	<b>£</b>	<b>£</b>	<b>£</b>	<b>£</b>
<b>Cost</b>				
At 1 April 2024	176,131	-	15,818	191,949
Additions	-	-	-	-
Surplus on revaluation	-	-	-	-
Disposals	-	-	-	-
At 31 March 2025	<u>176,131</u>	<u>-</u>	<u>15,818</u>	<u>191,949</u>

Independent Examiners Report



**CHARITY COMMISSION  
FOR ENGLAND AND WALES**

Independent examiner's report on the  
accounts

**Independent Examiner's Report on the accounts**

**Report to the trustees/  
members of**

Dreamsai Milton Keynes

**On accounts for the year  
ended**

31 March 2025

**Charity no**

1184822

**Set out on pages**

13-14

I report to the trustees on my examination of the accounts of the above charity for the year ended 31<sup>st</sup> March 2025

**Responsibilities and basis of  
report**


As the charity's trustees, you are responsible for the preparation of the accounts in accordance with the requirements of the Charities Act 2011 ("the Act").

I report in respect of my examination of the Trust's accounts carried out under section 145 of the 2011 Act and in carrying out my examination, I have followed all the applicable Directions given by the Charity Commission under section 145(5)(b) of the Act.

Independent examiner's statement

I have completed my examination. I confirm that no material matters have come to my attention in connection with the examination

I have no concerns and have come across no other matters in connection with the examination to which attention should be drawn in this report in order to enable a proper understanding of the accounts to be reached.

**Signed:**  **Date:** 30/12/2025

**Name:** V Anand

**Relevant professional qualification(s) or body (if any):** BA., LLB., ACMA., CIA

**Address:** 106 Walhouse Road  
Walsall  
WS1 2BE

**DREAMSAI MILTON KEYNES**

England & Wales - Charity number 1184822

---

# Accounts

---

# *DREAMSAI Milton Keynes*

## *Charity Number: 1184822*

Financial Statements for the year ended 31<sup>st</sup> March 2024.

**Report of the Trustees for the year ended 31 March 2024.**

The trustees present their annual report and independent examined financial statements for the year ended 31 March 2024 and confirm they comply with the Charities Act 1993, as amended by the Charities Act 2006, the trust deed, and the Charities SORP 2005.

**Reference and Administrative Information**

Charity Name	DREAMSAI Milton Keynes
Charity Registration Number	1184822
Principle Office	106, Walhouse road, Walsall, West Midlands, WS1 2BE

**Board of Trustees:**

Lakshmana Rao Kastala (Chair)  
Srinivasa Rao Velupula  
Surabhi Sharan

**Independent Examiners:**

Anand Associates  
106, Walhouse Road  
Walsall  
WS1 2BE

**Bankers:**

HSBC Bank plc  
The Bridge,  
Walsall,  
West Midlands  
WS1 1LN

## Contents

Report of the Trustees for the year ended 31 March 2024.....	4
Structure, Governance and Management .....	4
Governing Document.....	4
Organisation Structure.....	4
Risk Management .....	4
Objectives and Activities.....	4
Summary of the main activities .....	5
Strategies .....	6
Volunteer Contribution.....	6
Activities and Achievements.....	8
Temple .....	8
Food for Sai .....	9
Cooked Meals.....	9
Breakfast Packs .....	9
Interfaith Hampers.....	10
Food Parcels.....	10
Guinness World Record Event .....	10
Hidden Stories – The Indian Chapter .....	10
School Cultural Days .....	11
Blood Donation .....	11
Three Peak Challenge.....	11
Awards .....	11
Partnerships.....	12
Financial Review.....	12
Reserves Policy.....	12
Principal funding sources.....	12
Statement of Trustee’s responsibilities .....	12
Income & Expenditure Account for period ending 31 <sup>st</sup> March 2024.....	13
Balance Sheet for the period ending 31 <sup>st</sup> March 2024 .....	14
Tangible Assets.....	14
Independent Examiners Report .....	15
<b>Independent examiner's report on the accounts.....</b>	<b>15</b>
Independent examiner's statement .....	16

## Report of the Trustees for the year ended 31 March 2024.

### Structure, Governance and Management

#### Governing Document

DREAMSAI Milton Keynes is constituted as a charitable trust registered with the Charity Commission in August 2019 under the charity number 1184822. It is governed by the deed of the trust.

#### Organisation Structure

Trustee Board is the ultimate accountability for the CIO, and responsible for strategic direction & organisational governance. The trustee board collaborates with executive team for the implementation. The executive team with the support of the volunteer teams operates various areas with the organisation. The organisation foundations are underpinned by support from volunteers , partners , donors and members of the community.

Governance is at the heart of the strategic and operational decision making. DREAMSAI is registered with Fund Raising Regulator and adheres to the recommended guidelines. No cash policy is a modern & transparent fundraising policy successfully implemented since inception; all the monetary donations are received via digital channels only. Volunteers in contact with vulnerable members of the community are DBS checked, it is mandatory for all the volunteers handling food to be level 2 food safety certified. DREAMSAI is registered with Information Commissioner's Office (ICO) and utmost care is taken for the personal data. DREAMSAI uses Digital First strategy and minimal paper usage. Technology systems are in place for operational efficiency and information governance.

#### Risk Management

The trustees have assessed the risk that charity faces and have drawn up a risk matrix which identifies the high/medium/low risks and its probabilities. The trustees review the risk matrix regularly at their meetings. The trustees are satisfied that systems are in place or arrangements are in hand to management the risks that have been identified – especially in the areas of criminal records bureau checks, safeguarding policies and procedures, health and safety, fire risk assessment, food and hygiene process and fund-raising regulations.

#### Objectives and Activities

The objects of the CIO are

1. The advancement of the Hindu religion for the public benefit in Milton Keynes in particular by promoting the teachings of Shirdi Saibaba as set out in the Satcharita
2. The prevention of sickness and the preservation of the health by raising awareness of the needs of donors of blood, bone marrow and stem cells within Asian and Indian Communities
3. The prevent or relief of poverty for public benefit in Milton Keynes supplying food, hygiene items, essentials to homeless and needy people in temporary sheltered accommodation.

## Summary of the main activities

DREAMSAI is an inclusive charity run by the local Milton Keynes community working for the benefit of all communities and making a profound impact. Many community-led activities are initiated to positively contribute for community wellbeing and successfully motivated the residents to become more involved through volunteering. The charity's reach and impact are maximised by collaborating with various partners in the sector. DREAMSAI is a bridge in connecting and building stronger communities.

DREAMSAI runs Shri Shirdi Saibaba Temple and community centre in Milton Keynes which is a registered place of worship and is open for everyone every day of the year. The temple celebrates all Indian festivals of various faiths in addition to Hindu festivals. The temple is all run by volunteers supporting in performing aarti, cooking Prashad (a holy meal served in Temple), serving Prashad, facilities, procurement and inventory etc making it a community run temple. Priest services which are specialist religious services are outsourced.

Based on the teachings of Indian Saint Shirdi Sai, DREAMSAI also support homeless community and vulnerable elderly with free cooked meal and essential items, deliver free food & essential parcels to families in need, support local schools with breakfast packs, holiday food parcels, organise workshops for youth and promote blood donations from ethnic minorities.

We now take immense pride of a team of 627 volunteers of all ages and backgrounds serving half a million meals annually to those in need as a food charity and managing Shri Shirdi Saibaba temple meeting the cultural needs of the community with a footfall of over 115,000 visitors in addition to supporting blood donation camps, conducting youth activities and many more community focussed projects. We are driven by our core values of being authentic, equitable, transparent and inclusive.

Our mission is to meet the needs of people whatever their background is as taught by our guru Saibaba. All our services are provided free of charge to everyone, and we are run by the generous voluntary donations. We celebrate festivals of various belief systems while welcoming people of any faith or no faith into mandir. We are proud to be the first temple in the world to accept digital only donations since inception.

Volunteers are at the heart of everything we do. What is particularly impressive is that the charity and temple is open every day of the week and serves meals twice everyday - all managed by passionate volunteers. The well-oiled operation of such a young charitable organisation providing services every day is nothing short of phenomenal. A special mention to our exceptional young talent who are 38% of our volunteer force, their drive and energy is palpable. DREAMSAI also consistently developed positive partnerships with many national & local organisations to collaborate and provide seamless operations, joined up services to widen the reach and impact while minimising the duplication.

Thousands of home cooked hot meals are served every year to the homeless or those in temporary accommodation. Festive Hampers are distributed to those in need during diverse festivities including Diwali, Christmas & Eid demonstrating our inclusive approach. Our group has also been responsive and adaptive to the changing needs of Milton Keynes and addressing the gaps to meet immediate community needs. Many lives are supported with the blood donated by DREAMSAI donors every year.

The charity which received the prestigious Queen's Award for voluntary service (an equivalent of MBE for volunteer groups) during the birthday honours in June 2021, from Late Her Majesty Elizabeth II has received Charity of the Year Highly Commend Award from Milton Keynes Business Achievement

Awards in March 2023. These awards given to DREAMSAI demonstrates the positive impact this group has created on our communities.

## Strategies

As part of expansion plans to meet demand, DREAMSAI successfully opened a public place of worship Shri Shirdi Saibaba Temple and Community Centre in July 2023. The primary purpose of this facility is to serve as a HUB for all DREAMSAI community projects & meeting the needs of the growing population. Further to receiving the planning permission for the change of use in 2022, internal building works were concluded to change the premises to meet the need including a prayer hall, dining area, serving area, kitchen, community centre, office area and toilets. Upon successfully receiving the building regulations approval, the premises opened to public in July 2023. This is a major step forward towards achieving the five-year strategy. This facility has become a hub for all operations. Engaging with cultural and spiritual activities enhance the mental health of the individual, which in turn benefits the mental health of the collective, leading to a happier and healthier society.

The number of community members benefitting from this facility increased multi fold as the place is open every day of the week. The Temple visitors come from across the length and breadth of England. The service users for food charity are from across the communities including elderly members, financially challenged families with school going children, families with poverty, homeless individuals, homeless shelters, youth & partner organisations. In addition to existing successful initiatives DREAMSAI would further host and anchor such constructive social engineering projects which are vital in bringing the community together in a way which will have a lasting positive impact on our communities.

The Temple and community centre is contributing towards the creation of safe, sustainable, mixed communities with good access to for all members of the community for social interaction. The users of all areas of Milton Keynes significantly benefit from this facility. This facility proudly represents the Diverse & Inclusive profile of Milton Keynes.

## Volunteer Contribution

DREAMSAI are 100% volunteer run organisation with 38% of them youth volunteers. An organisation structure is in place for strategy, governance, safeguarding and operational purposes. The number of volunteer hours given is quite staggering, and even more remarkable when all volunteers are holding down full-time jobs or in education. In a volunteer Survey, 96% of volunteers said, "By volunteering with DREAMSAI, I have a sense of fulfilment and am creating a positive impact on others".

DREAMSAI has 627 registered volunteers of all ages and background, every week hundreds of volunteers participate in seva(service). In Temple, the volunteers perform Aarti, Bhajans(singing of god's name), procurement, inventory, cooking Prashad and serving etc. The charity volunteers participate in preparing the food parcels, prepare cooked meals, door delivering the food parcels and cooked meals, procuring the items needed for food parcels, managing the inventory and organising the logistics. The organisations volunteers work on relationship with partner organisation, organising blood donation camps, digital communications, reviewing and updating policies and procedures,

maintaining and implementing required IT systems, data protection, managing the helpline, fundraising, financial management and operations.

The Trustee Board is the ultimate accountable and decision-making body. The Board and Executive team members work hand in hand with support provided by the volunteers. The organisation structure is reorganised by merging the teams into Food Charity, Temple and Organisation to create a better target operating model. The organisation foundations are underpinned by support from volunteer pool and members of Milton Keynes community. The members of community interested to volunteer will fill an online form and will be onboarded to specific projects based on their interest by Executive Team. Executive Team are the leads managing various projects within the verticals. Experienced Volunteers who are interested & qualified to lead the projects will be appointed to Executive Team after due consideration. Executive Team is a route to join the Board. An exception to this is the honorary board members who may be appointed from a chosen field of specialisation to benefit the organisation objectives.

Thirty youth members are also doing Duke of Edinburgh (DofE) voluntary work as part of their secondary school award scheme. Volunteers provide their services to either one project or multiple projects. Volunteers are recruited upon reference to ensure enhanced suitability check. The personal details of the volunteers are securely managed in the online system with appropriate access management. DBS checks are performed to the volunteers who will be interacting with service users. The volunteers managing the Kitchen are also required to complete the Level 2 Food & Hygiene Safety certification.

A visitor commented “We are amazed at how much DREAMSAI achieved in such a short time. We are blown away by the huge number of volunteers, including lots of young people. The devotion that volunteers have for the temple and the charity work is absolutely amazing.”



## Activities and Achievements

Being an ethnic group ourselves, we had a profound impact on reducing social inequalities and building stronger community cohesion by running local, community-led inclusive projects, which involves active engagement from diverse communities; all of which was achieved solely by volunteers.

## Temple

Temple & Community Centre enabled us to centralise various well received community projects that benefits the diverse communities across Milton Keynes. Saibaba's doctrine of Shraddha and Saburi underpins all activities at the Temple, steering visitors towards spiritual growth and community cohesion. His teachings on simplicity, selflessness, and devotion are integral to the temple's daily rituals, events, and services, establishing it as a vibrant centre that is open every day from 8am to 9pm. For those who can't often visit Shirdi, India the Temple in Milton Keynes offers a similar spiritual experience, making Baba's presence accessible. The Shirdi Sai Temple, mirroring the sacred atmosphere of Shirdi, offers a sanctuary of peace for meditation and reflection.

Each cultural event at our temple is more than just a celebration; it is an opportunity to immerse in rich diverse traditions, enjoy vibrant cultural performances, and foster a deep sense of unity and belonging. These celebrations attract visitors from far and wide, with diverse backgrounds. creating an inclusive and dynamic community.

The temple hosts a rich array of cultural festivities that embody the spirit of unity and diversity, including Sankranthi/Bhogi, Lohri and Vaisakhi, Ugadi, Holi, Gudi Padwa, Guru Purnima, Ram Navami, Kshamavani, Diwali, Chandnostav and Urus, Christmas, Ganesh Chaturthi, and Dasara. These events not only celebrate traditional customs and rituals but also foster cultural exchange among devotees from various backgrounds.

The Prasadalya (Dining Hall) at the temple serves as a vibrant centre of activity, offering freshly cooked Prashad to all visitors and the needy twice daily, free of charge. Each meal is first offered to Baba and then to visitors, symbolising divine grace. This shared dining experience fosters a strong sense of belonging and spiritual fulfilment.

Since its inception last year, the Temple Kitchen has prepared over 64,000 meals, highlighting its commitment to community service and selfless devotion. Volunteers, certified in food hygiene, ensure every meal is a labour of love, maintaining high standards and reflecting Sai Baba's spirit.

The Prasadalya kitchen is equipped with state-of-the-art appliances, efficiently handling the demands of a bustling community. This modern facility ensures precise and careful meal preparation, providing seamless service to all visitors. The temple's kitchen also boasts a five-star hygiene rating, emphasising cleanliness and safety. This commitment ensures that every meal is prepared in an environment prioritising community health and well-being.

Devotees celebrate anniversaries, birthdays, and other milestones by sponsoring Prasad, reinforcing community and shared joy while some make generous grocery donations.

Committed to sustainability, the temple uses steel plates and spoons, washed and reused after meals. For larger events, recyclable disposables are used to minimise environmental impact.

A devotee said "This temple transcends religious boundaries and touches the depths of the human spirit. One of the most striking features of this temple is the main hall, where one can immerse themselves in meditation and prayer."

## Food for Sai

After the pandemic of 2020, continued cost-of-living crisis has brought unprecedented situations to the normal life of everyone and we have seen significant increase in the demand for the food charity services. The combination of inflation, wage stagnation and real-terms cuts to benefits is severely impacting households' ability to afford essential costs. As the cost of food continued to rise and other inflationary pressures restrict household budgets, access to sufficient and nutritious food is increasingly out of reach for a greater proportion of the population. Food for Sai project play a crucial role in reducing hunger and hardship for the poorest children, families and communities with complex challenges.

DREAMSAI's ethos are deeply rooted in the SAI teachings of love, compassion, and selfless service. We strive to embody these values through various community-focused projects like FOOD FOR SAI while supporting the vulnerable communities.

## Cooked Meals

Launched in 2018, the FOOD FOR SAI cooked meal project has been serving warm meals and hope every Saturday to guests who are homeless or in temporary shelters. Food poverty and homelessness can lead to isolation and poor physical and mental health. Our service has been a lifeline for many, offering not just nourishment but also a sense of community and care.

Every Saturday starts early for our dedicated volunteers. While master chefs cook in our temple kitchen in Kingston, the youth-led team sets up the distribution centre in Central Milton Keynes. They serve hot drinks, meals, snacks, fruit, and drinks to the homeless at Buszy (the old bus station). A variety of dishes are made. The diverse weekly menu is eagerly anticipated by our guests. The cooked meals are also distributed to various temporary emergency shelters across the city housing refugees, or homeless or the women fleeing domestic violence.

A young volunteer said "'I admire the dedication of DREAMSAI to serve food every Saturday without fail."

## Breakfast Packs

Breakfast is the most important meal of the day, yet the number of children facing food poverty in Milton Keynes has continued to rise, reflecting a national trend exacerbated by the cost of living crisis. The School Breakfast Project delivers milk and cereals to seven local schools within Milton Keynes. In addition to this, we provide food parcels for students to take home during school terms and holidays. This pupil focussed initiative supports their development and enhances their ability to concentrate and engage in school activities. We also partner with local businesses and community organizations to ensure the sustainability and reach of this vital program.

A headteacher said “At three of our primary schools in Milton Keynes, families have been benefiting from DREAMSAI support. The charity volunteers who drop off the hampers are wonderfully polite and thoughtful.”

## Interfaith Hampers

Based on SAI teachings of ‘Sabka Malik Ek’, we distribute festive hampers for Diwali, Eid , Christmas & Easter enabling the communities their special festivals. These hampers bring joy and support to families during these important times, fostering a sense of unity and inclusiveness.

## Food Parcels

The food parcels project started in response to the pandemic in 2020 has become essential, especially during the ongoing cost of living crisis. We deliver about 4,160 free food parcels annually to those in need in Milton Keynes. These weekly parcels provide nutritious meals to our most vulnerable community members. Around 150 volunteers from diverse backgrounds participate in this project working as procurement, packing, and delivery teams. The procurement team collects donations from food banks, partners, and supermarkets, and youth volunteers help sort and check expiry dates. These activities are carried out throughout the week, ensuring regular checks and efficient logistics.

Every Saturday, the packing team gathers at Buszy (the old bus station opposite Milton Keynes train station) to assemble food bags for households across Milton Keynes. They unload the van, sort items, pack the bags, and load vehicles for delivery. This effort, driven by youth volunteers, fosters community spirit and offers them a chance to engage in meaningful work. Volunteers from diverse backgrounds unite for a common purpose and positively impacting society.

The delivery team, composed of adults and sometimes their children, completes the process by not only distributing the food packs to various households but building connections with the recipients and receiving gratitude in return. Every volunteer supports the cause passionately, inspired by Baba’s message of giving food to those in need.

A food parcel recipient said “ I believe that you are the kindest people on this planet. You kept many people who are in the same situation as me alive”

## Guinness World Record Event

Our youth volunteers participated in a world record attempt for the longest line of cans, organised by the MK Food Bank. Collecting and lining up 800 cans, they surpassed our target by 200. The new record is 102,447 cans, up from 44,000 in 2014. This journey, fuelled by passion and dedication, involved over 250 organisations. We are proud to be part of this historic Guinness World Record achievement, showcasing incredible unity and effort.

## Hidden Stories – The Indian Chapter

In collaboration with the Film Academy Milton Keynes and funded by the Milton Keynes Community Foundation, we launched “Hidden Stories: The Indian Chapter.” This project aimed at highlighting the

Indian community's contributions to Milton Keynes over the past fifty years. It was a great opportunity for youth talent to make short films on topics like the NHS, economy, culture, and faith etc.

### School Cultural Days

We participate in many school cultural days to showcase Indian culture and we firmly believe that by celebrating our differences, we pave the way for a more inclusive and understanding society. We invite community groups into mandir and participate in city forums to representing the positive contribution of temple & charity in Milton Keynes.

### Blood Donation

DreamSai actively collaborates with NHS Blood & Transplant, advocating for increased blood donation within the UK's Indian community, particularly important due to the shortage of blood types prevalent in Asian communities. Despite only 7% of the UK's population engaging in blood donations, DreamSai's campaigns have been fruitful, with 186 new registrants, 55% of whom had never donated before. This is crucial as ethnically matched blood donations significantly aid in treating conditions like thalassemia and sickle cell anaemia. The initiative also focuses on organ and stem cell donations, addressing the critical need for donors within Asian communities, where matching is essential and waiting times are notably longer. DreamSai's commitment extends to saving lives through kindness and active participation

### Three Peak Challenge

Our charity is run by the generous voluntary donations from the community. Our team conducts many fundraising events to raise the much needed funds while promoting health & wellbeing. Three peaks was one of the challenges successfully completed where our volunteers conquered three highest peaks in England, Scotland and Wales. Led by two experienced hikers and a team of like-minded volunteers, the event was a fruitful and pleasant experience for all participants.

A challenge participant said ““This challenge offered not just a test of endurance but also a profound sense of peace and achievement. The satisfaction of reaching each peak was immensely rewarding.”

### Awards

We are delighted to have received the prestigious Queen's Awards for Voluntary Service in 2021, the highest honour for a voluntary group in the UK, bestowed by the Late Her Majesty Queen Elizabeth II. This recognition, equivalent to an MBE for volunteer groups, is a testament to the dedication of our volunteers, donors, and supporters. We are also thrilled to be awarded the Charity of the Year highly commended award at the Milton Keynes Business Achievement Awards (MKBAA) in March 2023. This honour celebrates the hard work of our entire team, whose unwavering commitment continues to drive our mission and positively impact our community.

Our Founder & Chairman Laxman Kastala has received the British Empire Medal (BEM ) in Her Majesty The Queen's Birthday Honours 2022 list as a recognition of his services to Milton Keynes Community.

His Majesty King Charles visited Milton Keynes in February 2023 to formally mark Milton Keynes' newly conferred city status. DREAMSAI were honoured to be invited to arrange a stall to exhibit about the charity. His Majesty spent good few minutes at the stall to learn about the charity. He was very kind, friendly, affectionate, and curious. It's surreal explaining about the charity to none other than the monarch, a lifetime memory and great opportunity to take the charity's cause further. Before leaving the stall HM said "Please convey my best wishes to every volunteer in your charity and all the Indian community of Milton Keynes. Please continue doing this wonderful work". All volunteers & community are delighted to learn His Majesty's warmth & kind message.

## Partnerships

As an inclusive group, the charity developed positive partnerships with many national & local organisations to collaborate and provide joined up services to widen the reach and impact while minimizing the duplication.

## Financial Review

### Reserves Policy

The trustees have reviewed the reserves of the charity, the policy is to hold enough to meet six months operating costs.

### Principal funding sources

The financial donations are only accepted using digital channels since inception, making this charity a pioneer in using this model. Majority of the donations are received using the card machine at the Temple or are received using payment options provided on the website. Corporate partner funding and grants are another source of income. In addition to the financial donations, the charity also receives the food donations from partners like food bank, local super markets and the communities. The charity is governed by the fund raising regulator.

## Statement of Trustee's responsibilities

The charity trustees are responsible for preparing an annual report and financial statements in accordance with applicable law and United Kingdom Accounting standards (United Kingdom Accepted Accounting Practice)

The law applicable to charities in England and Wales requires the charity trustees to prepare financial statements for each year which give a true and fair view of the state of affairs of the charity and of the ongoing resources and application of resources of the charity for that period. In preparing the financial statements the trustees are required to:

Select suitable accounting policies and then apply them consistently; observe the methods and principle in the Charities SORP;

Make judgements and estimates that are reasonable and prudent; state where applicable accounting standards have been followed, subject to any material departures disclosed and explained in the financial statements;

Prepare the financial statements on the going concern basis unless it is inappropriate to presume that the charity will continue in business



## Balance Sheet for the period ending 31<sup>st</sup> March 2024

<b>Balance Sheet as at 31 March 2024</b>			
	<b>Notes</b>	<b>2024 £</b>	<b>2023 £</b>
<b>Fixed assets</b>			
Intangible assets	4	-	-
Tangible assets	5	191,949	15,818
Investments	6	-	-
		<u>191,949</u>	<u>15,818</u>
<b>Current assets</b>			
Stocks		-	-
Debtors	7	-	-
Investments held as current assets	8	-	-
Cash at bank and in hand		33,324	84,401
		<u>33,324</u>	<u>84,401</u>
<b>Creditors: amounts falling due within one year</b>	9	-	-
<b>Net current assets</b>		33,324	84,401
<b>Total assets less current liabilities</b>		<u>225,273</u>	<u>100,219</u>
<b>Creditors: amounts falling due after more than one year</b>	10	-	-
<b>Provisions for liabilities</b>		-	-
<b>Net assets</b>		<u>225,273</u>	<u>100,219</u>
<b>Capital and reserves</b>			
Called up share capital		-	-
Share premium		-	-
Revaluation reserve	12	-	-
Profit and loss account		225,273	100,219
<b>Shareholders' funds</b>		<u>225,273</u>	<u>100,219</u>

## Tangible Assets

<b>5 Tangible fixed assets</b>				
	<b>Land and buildings</b>	<b>Plant and machinery etc</b>	<b>Motor vehicles</b>	<b>Total</b>
	<b>£</b>	<b>£</b>	<b>£</b>	<b>£</b>
<b>Cost</b>				
At 1 April 2023	-	-	15,818	15,818
Additions	176,131	-	-	176,131
Surplus on revaluation	-	-	-	-
Disposals	-	-	-	-
At 31 March 2024	<u>176,131</u>	<u>-</u>	<u>15,818</u>	<u>191,949</u>

# Independent Examiners Report



**CHARITY COMMISSION  
FOR ENGLAND AND WALES**

## Independent examiner's report on the accounts

### Independent Examiner's Report on the accounts

**Report to the trustees/  
members of**

Dreamsai Milton Keynes

**On accounts for the year  
ended**

31 March 2024

**Charity no**

1184822

**Set out on pages**

13-14

I report to the trustees on my examination of the accounts of the above charity for the year ended 31<sup>st</sup> March 2024

**Responsibilities and basis of  
report**

As the charity's trustees, you are responsible for the preparation of the accounts in accordance with the requirements of the Charities Act 2011 ("the Act").

I report in respect of my examination of the Trust's accounts carried out under section 145 of the 2011 Act and in carrying out my examination, I have followed all the applicable Directions given by the Charity Commission under section 145(5)(b) of the Act.

Independent examiner's statement

I have completed my examination. I confirm that no material matters have come to my attention in connection with the examination

I have no concerns and have come across no other matters in connection with the examination to which attention should be drawn in this report in order to enable a proper understanding of the accounts to be reached.

**Signed:**  **Date:** 27/12/2024

**Name:** V Anand

**Relevant professional qualification(s) or body (if any):** BA., LLB., ACMA., CIA

**Address:** 106 Walhouse Road  
Walsall  
WS1 2BE

**DREAMSAI MILTON KEYNES**

England & Wales - Charity number 1184822

---

# Accounts

---

# *DREAMSAI Milton Keynes*

## *Charity Number: 1184822*

Financial Statements for the year ended 31<sup>st</sup> March 2023.

**Report of the Trustees for the year ended 31 March 2023.**

The trustees present their annual report and independent examined financial statements for the year ended 31 March 2023 and confirm they comply with the Charities Act 1993, as amended by the Charities Act 2006, the trust deed, and the Charities SORP 2005.

**Reference and Administrative Information**

Charity Name	DREAMSAI Milton Keynes
Charity Registration Number	1184822
Principle Office	106, Walhouse road, Walsall, West Midlands, WS1 2BE

**Board of Trustees:**

Lakshmana Rao Kastala (Chair)  
Srinivasa Rao Velupula  
Surabhi Sharan

**Independent Examiners:**

Anand Associates  
106, Walhouse Road  
Walsall  
WS1 2BE

**Bankers:**

HSBC Bank plc  
The Bridge,  
Walsall,  
West Midlands  
WS1 1LN

## Contents

Report of the Trustees for the year ended 31 March 2023.....	4
Structure, Governance and Management .....	4
Governing Document.....	4
Organisation Structure.....	4
Risk Management .....	4
Objectives and Activities.....	4
Summary of the main activities .....	5
Strategies .....	5
Volunteer Contribution.....	6
Activities and Achievements.....	7
Temple & Community Centre – Building project.....	8
Food for SAI – Cooked Meals Project.....	8
Food Outreach – Food Parcels, School Packs , Breakfast Packs, & Festive Hampers .....	8
Blood Donation .....	9
Spiritual Activities and Temple .....	9
Partnerships .....	9
Financial Review.....	9
Reserves Policy.....	9
Principal funding sources .....	10
Statement of Trustee’s responsibilities .....	10
Income & Expenditure Account for period ending 31 <sup>st</sup> March 2023.....	11
Balance Sheet for the period ending 31 <sup>st</sup> March 2023 .....	12
Independent Examiners Report .....	13
<b>Independent examiner's report on the accounts.....</b>	<b>13</b>
Independent examiner's statement .....	14

## Report of the Trustees for the year ended 31 March 2023.

### Structure, Governance and Management

#### Governing Document

DREAMSAI Milton Keynes is constituted as a charitable trust registered with the Charity Commission in August 2019 under the charity number 1184822. It is governed by the deed of the trust.

#### Organisation Structure

Trustee Board is the ultimate accountability for the CIO, and responsible for strategic direction & organisational governance. The trustee board collaborates with executive team for the implementation. The executive team with the support of the volunteer pool operates the projects. The organisation foundations are underpinned by support from volunteers and members of Milton Keynes community.

Governance is at the heart of the strategic and operational decision making. DREAMSAI is registered with Fund Raising Regulator and adheres to the recommended guidelines. No cash policy is a modern & transparent fundraising policy successfully implemented since inception; all the monetary donations are received via digital channels only. Volunteers in contact with vulnerable members of the community are DBS checked, it is mandatory for all the volunteers handling food to be food safety certified. DREAMSAI is registered with Information Commissioner's Office (ICO) and utmost care is taken for the personal data. DREAMSAI uses Digital First strategy and minimal paper usage. Technology systems are in place for operational efficiency and information governance.

#### Risk Management

The trustees have assessed the risk that charity faces and have drawn up a risk matrix which identifies the high/medium/low risks and its probabilities. The trustees review the risk matrix regularly at their meetings. The trustees are satisfied that systems are in place or arrangements are in hand to management the risks that have been identified – especially in the areas of Criminal Records Bureau checks, safeguarding policies and procedures, food and hygiene process and fund-raising regulations.

### Objectives and Activities

The objects of the CIO are

1. The advancement of the Hindu religion for the public benefit in Milton Keynes in particular by promoting the teachings of Shirdi Saibaba as set out in the Satcharita
2. The prevention of sickness and the preservation of the health by raising awareness of the needs of donors of blood, bone marrow and stem cells within Asian and Indian Communities

3. The prevent or relief of poverty for public benefit in Milton Keynes supplying food, hygiene items, essentials to homeless and needy people in temporary sheltered accommodation.

## Summary of the main activities

DREAMSAI is an inclusive charity run by the local Milton Keynes community working for the benefit of diverse communities and making a profound impact. Many community-led activities are initiated to positively contribute for community wellbeing and successfully motivated the residents to become more involved through volunteering. The charity's reach and impact are maximised by collaborating with various partners in the sector. DREAMSAI is a bridge in connecting and building stronger communities.

Based on the teachings of Indian Saint Shirdi Sai, DREAMSAI organize spiritual events and celebrate Indian and diverse cultural festivals of various faiths, support homeless community and vulnerable elderly with free cooked meal and essential items, deliver free food & essential parcels to vulnerable communities, support local schools with breakfast packs, holiday food parcels, organise workshops and promote blood donations from ethnic minorities.

Every week hundreds of community members attend and benefit from the spiritual & cultural activities. Thousands of home cooked hot meals are served every year to the homeless or those in temporary accommodation. Festive Hampers are distributed to those in need during diverse festivities including Diwali, Christmas & Eid demonstrating our inclusive approach. The group has also been responsive and adaptive to the changing needs of this city and addressing the gaps to meet immediate community needs. Many lives are supported with the blood donated by DREAMSAI donors every year. The charity which received the prestigious Queen's Award for voluntary service (an equivalent of MBE for volunteer groups) during the birthday honours in June 2021, from Late Her Majesty Elizabeth II has received Charity of the Year Highly Commend Award from Milton Keynes Business Achievement Awards in March 2023. These awards given to DREAMSAI demonstrates the positive impact this group has created on our communities.

## Strategies

As part of expansion plans to meet demand, DREAMSAI successfully applied to lease the premises from Milton Keynes Community Foundation in November 2021 with rent subsidy. The primary purpose of this facility is to serve as a HUB for all existing DREAMSAI community projects & meeting the needs of the growing population. Planning permission for the change of use was applied with Milton Keynes Local Authority in April 2022 and the planning consent for change of Use from Class E(f) a day nursery to a mixed use of F1(f) Place of Worship and F2(b) Community Hall is received in July 2022. Tendering process for building works is concluded and works have commenced. Upon receiving the satisfactory Building Regulations certificate, the premises will open for public in July 2023. This is a major step forward towards achieving the five-year strategy. Services currently operated from various temporary premises including Unity Park Station, Milton Keynes Hindu Association community centre, Commercial Kitchens, Individual home kitchens, Personal garages, living rooms and cafes will be centralised to this new facility in 2023 & services will be expanded in the following years.

Thousands of users from across the diverse communities currently benefit from DREAMSAI activities and will continue to benefit from these new premises. The service users are from across the communities including elderly members, financially challenged families with school going children, families with poverty, homeless individuals, homeless shelters, youth, Indian community members & partner organisations. In addition to existing successful initiatives DREAMSAI would further host and

anchor such constructive social engineering projects which are vital in bringing the community together in a way which will have a lasting positive impact on our communities. Engaging with cultural and spiritual activities enhance the mental health of the individual, which in turn benefits the mental health of the collective, leading to a happier and healthier society.

This new facility due to open in July 2023 will contribute towards the creation of safe, sustainable, mixed communities with good access to for all members of the community for social interaction. The users of all areas of Milton Keynes will significantly benefit from this facility. This facility would proudly represent the Diverse & Inclusive profile of Milton Keynes.

## Volunteer Contribution

DREAMSAI are 100% volunteer run organisation with 40% of them youth volunteers. An organisation structure is in place for strategy, governance, safeguarding and operational purposes. The number of volunteer hours given is quite staggering, and even more remarkable when all volunteers are holding down full-time jobs or in education. In a volunteer Survey, 96% of volunteers said, "By volunteering with DREAMSAI, I have a sense of fulfilment and am creating a positive impact on others".

Every week hundreds of volunteers participate in preparing the food parcels, prepare cooked meals, door delivering the food parcels and cooked meals, procuring the items needed for food parcels, managing the inventory, organising the logistics, relationship with partner organisation and schools, organising blood donation camps, digital communications, reviewing and updating policies and procedures, maintaining and implementing required IT systems, data protection, managing the helpline, fundraising, financial management, operations and organising spiritual events.

The Trustee Board is the ultimate accountable and decision-making body. The Board and Executive team members work hand in hand with support provided by the volunteers. The organisation structure is reorganised by merging the teams into Food Charity, Temple and Organisation to create a better target operating model. The organisation foundations are underpinned by support from volunteer pool and members of Milton Keynes community. The members of community interested to volunteer will be added to volunteer pool and then onboarded to specific projects by Executive Team. Executive Team are the leads managing various projects within the verticals. Experienced Volunteers who are interested & qualified to lead the projects will be appointed to Executive Team after due consideration. Executive Team is a route to join the Board. An exception to this is the honorary board members who may be appointed from a chosen field of specialisation to benefit the organisation objectives.

DREAMSAI has 332 registered volunteers. Thirty-four youth members are also doing Duke of Edinburgh (DofE) voluntary work as part of their secondary school award scheme. Volunteers provide their services to either one project or multiple projects. Volunteers are recruited upon reference to ensure enhanced suitability check. All the interested volunteers' details will be added onto the volunteer pool upon their request. The personal details of the volunteers are securely managed in the online system with appropriate access management. DBS checks are performed to the volunteers who will be interacting with service users. The volunteers managing the Food for SAI project are also required to complete the Level 2 Food & Hygiene Safety certification.



## Activities and Achievements

Being an ethnic group ourselves, we had a profound impact on reducing social inequalities and building stronger community cohesion by running local, community-led inclusive projects, which involves active engagement from diverse communities; all of which was achieved solely by volunteers.

After the pandemic of 2020, the cost-of-living crisis of 2022 has once again brought in unprecedented situations to the normal life of everyone and we have seen significant increase in the demand for the food charity services. The combination of inflation, wage stagnation and real-terms cuts to benefits is severely impacting households' ability to afford essential costs. As the cost of food continued to rise and other inflationary pressures restrict household budgets, access to sufficient and nutritious food is increasingly out of reach for a greater proportion of the population. Food for Sai project played a crucial role in reducing hunger and hardship for the poorest children, families and communities with complex challenges.

Planning permission is granted by Milton Keynes Council for Change of Use of premises from Class E(f) a day nursery to a mixed use of F1(f) Place of Worship and F2(b) Community Hall. We had profound impact on reducing social inequalities and building stronger community cohesion by running local, community-led inclusive projects, which involves active engagement from diverse communities; all of which was achieved solely by volunteers. These premises enable us to centralise various well received community projects that benefits the diverse communities across Milton Keynes

Our Founder & Chairman Laxman Kastala has received the British Empire Medal (BEM ) in Her Majesty The Queen's Birthday Honours 2022 list as a recognition of his services to Milton Keynes Community.

His Majesty King Charles visited Milton Keynes in February 2023 to formally mark Milton Keynes' newly conferred city status. DREAMSAI were honoured to be invited to arrange a stall to exhibit about the charity. His Majesty spent good few minutes at the stall to learn about the charity. He was very kind, friendly, affectionate, and curious. It's surreal explaining about the charity to none other than the monarch, a lifetime memory and great opportunity to take the charity's cause further.

Before leaving the stall HM said “Please convey my best wishes to every volunteer in your charity and all the Indian community of Milton Keynes. Please continue doing this wonderful work”. All volunteers & community are delighted to learn His Majesty's warmth & kind message.

DREAMSAI received the Charity of the Year Highly Commended award from Milton Keynes Business Achievement Awards in March 2023 demonstrating the positive impact this group has created on our communities.

#### Temple & Community Centre – Building project.

Further to the successful planning permission, a project plan was prepared to complete the building works in readiness for occupation in July 2023. A Request for Proposal (RFP) process was launched with contracts offered to best of three suppliers. Legal, Architectural and Builders were appointed. Eco friendly and sustainable Electrical Heating & Mechanical Ventilation Systems are designed for the new premises. Commercial Kitchen facilities are designed to support the food charity and temple premises. Building Regulations inspectors were appointment. Head of Terms of the lease are in place with Lease agreement to be signed in April'2023. Digital fundraising efforts were initiated to raise sufficient funds for the completion of the new premises.

#### Food for SAI – Cooked Meals Project

Homelessness has become a major issue in Milton Keynes over the last few years. According to Vital Signs 2019, a report published by the MK Community Foundation, 1 in every 117 people in Milton Keynes are homeless. Many organisations in MK are providing various services to end Homelessness but there is a gap for hot meal service. Hundreds of local households subscribed to the weekly run Food for SAI project, a community meal preparation and distribution programme - demonstrating the positive community engagement. With an average of 80 meals per week, a total of 4160 cooked meal packs along with water, fruit and snack were distributed to homeless community, homeless shelters, and vulnerable people in need. The cooked meal project also door delivered meals on the Christmas day to many families in association with partner organisations. Many vulnerable community members are dependent on this service every weekend. We aim to centralise the cooking process into the central hub improving the operational efficiency and scalability.

#### Food Outreach – Food Parcels, School Packs , Breakfast Packs, & Festive Hampers

Since the start of the pandemic DREAMSAI have been giving free essential food parcels to families in need. Many organisations need support for the guests waiting for universal credits. Victims of domestic violence is on growth with guests placed in temporary accommodation. One in five city children are still living below the poverty line - and the problem is getting worse. Various types of food parcels are delivered weekly, free of charge to families in need, guests living in refuge centres or local schools. This year DREAMSAI has partnered with Food Bank for food parcel project and a data sharing agreement to maximise the reach and minimise the duplication. The collaboration has proved very successful, and the project has delivered over 3640 food parcels which enabled our vulnerable communities to have much needed meal on the dinner tables.

Breakfast is the most important meal of the day, but the number of children facing food poverty has continued to rise in MK, mirroring what is happening nationally. DREAMSAI delivered weekly breakfast parcels to various local primary schools during school term. These breakfast parcels contained cereals packs and milk sufficient for a week. In addition to breakfast packs, schools received food parcels

every week and additional parcels during the half term and summer term holidays for children to take home.

Festive Hampers are delivered to guests celebrating festivals including Christmas, Easter, Eid & Diwali in collaboration with organisations of various faiths. The projects have proved very beneficial with volunteers from across the organisations working together for common goal in supporting those in need.

DREAMSAI also partnered with local supermarkets to place a food donation box which is collected by volunteers on regular basis. Food donation Box in two Morrisons superstores has filled up 156 times in the last year with average donated items for each collection of 80 per box and totalling over 12,480 items during the year. An amazing support by the shoppers of the supermarkets.

### Blood Donation

As per report published by NHS Blood & Transplant, fewer than 5% of blood donors who gave blood are from ethnic communities. This is despite ethnic communities representing around 14% of the population. One of the 3 key objectives of DREAMSAI charity which was formed based on the teachings of Indian Saint Shirdi Sai is to “Raise awareness of the blood donation, bone marrow and stem cells within Asian and Indian Communities”. Being a community driven all volunteer run organisation, we play a significant role at grass roots in communicating the need for ethnic communities to donate blood, bone marrow and opt in for organ donation. We have successfully broken the myth of “if you are from Tropical countries, you cannot donate blood in UK” and changed the narrative to “if you travelled to Tropical countries wait for few months before donating blood”. Many donors who donate with DREAMSAI once or twice continue to make blood donations on their own as well proving the fact that they “feel comfortable going on their own once they understand it”. A positive impact of this initiative.

### Spiritual Activities and Temple

As per 2011 census Milton Keynes has 3.3% Indian population. There is a significant growth in the last decade, estimations indicate that the growth of these communities would be 5% by next census. Milton Keynes as a new city does not have infrastructure to meet the changing demographics. The cultural and spiritual activities organised by DREAMSAI every Guru Day (Thursday) in the rented premises of Hindu Association is usually visited by an average of 100 community members every week and numbers increasing during the celebration of festivals or term holidays. It is crucial to build the facilities for the cultural wellbeing of these communities. The new premises leased by DREAMSAI where all the above services will be centralised would achieve the objective.

### Partnerships

As an inclusive group, the charity developed positive partnerships with many national & local organisations to collaborate and provide joined up services to widen the reach and impact while minimizing the duplication.

### Financial Review

#### Reserves Policy

The trustees have reviewed the reserves of the charity, Their policy is to hold enough to meet six months operating costs.

### Principal funding sources

The financial donations are only accepted using digital channels since inception, making this charity a pioneer in using this model. Majority of the donations are received using payment options provided on the website or using the card machine at the spiritual events conducted every Thursday. Corporate partner funding and grants are another source of income. A grant is received from Community Foundation for Schol Breakfast project. In addition to the financial donations, the charity also receives the food donations from partners like food bank, local super markets and the communities. The charity is governed by the fund raising regulator.

### Statement of Trustee's responsibilities

The charity trustees are responsible for preparing an annual report and financial statements in accordance with applicable law and United Kingdom Accounting standards (United Kingdom Accepted Accounting Practice)

The law applicable to charities in England and Wales requires the charity trustees to prepare financial statements for each year which give a true and fair view of the state of affairs of the charity and of the income resources and application of resources of the charity for that period. In preparing the financial statements the trustees are required to:

Select suitable accounting policies and then apply them consistently; observe the methods and principle in the Charities SORP;

Make judgements and estimates that are reasonable and prudent; state where applicable accounting standards have been followed, subject to any material departures disclosed and explained in the financial statements;

Prepare the financial statements on the going concern basis unless it is inappropriate to presume that the charity will continue in business

The trustees are responsible for keeping proper accounting records that disclose reasonable accuracy at any time the financial position of the charity and to enable them to ensure that the financial statements comply with the Charities Act 1993, the Charities (Accounts and Reports) Regulations Act 2008 and the provisions of the trust deed. They are also responsible for safeguarding the assets of the charity hence taking reasonable steps for the prevention and detection of the fraud and other irregularities.

The trustee for the purposes of charity law who served during the year up to the date of this report are set out in page 1.

**Approved by the trustees and signed on the behalf by:**

A handwritten signature in blue ink, appearing to read "Lakshmana", with a horizontal line underneath.

**Lakshmana Rao Kastala (Chair)**

**28/12/2023**

## Income & Expenditure Account for period ending 31<sup>st</sup> March 2023.

<b>Dreamsai Milton Keynes Ltd</b>							
<u>Income &amp; Expenditure account</u>							
<u>For the year ended</u>				<u>31 March 2023</u>			
<u>2022</u>				<u>2023</u>			
<u>Restricted</u>	<u>Unrestricted</u>	<u>Totals</u>		<u>Restricted</u>	<u>Unrestricted</u>	<u>Totals</u>	
122,238	40,160	162,398		121,382	64,122	185,504	
				Total Income			
				Less Expenses			
102,835	13,629	116,464		109,283	16,004	125,287	
				Charity - Food			
		15,031	15,031			14,667	14,667
				Spiritual Activities			
-	-	-		-			
				VAN			
-	-	-		-			
				Clothings			
-	-	-		-			
-	<u>102,835</u>	<u>10,720</u>	<u>39,380</u>	<u>10,720</u>	<u>142,215</u>	<u>10,282</u>	<u>40,953</u>
				General Administratior			
19,403	780	20,183		12,099	23,169	35,268	
				Net Surplus			
-	<u>4</u>	<u>7</u>		-			
				Other Income - Interest			
<u>£ 19,403</u>	<u>£ 784</u>	<u>£ 20,190</u>		<u>£ 12,099</u>	<u>£ 23,446</u>	<u>£ 35,545</u>	
				Total surplus			

Balance Sheet for the period ending 31<sup>st</sup> March 2023

<u>Dreamsai Milton Keynes Ltd</u>		
<u>Balance Sheet as at</u>		<u>31 March 2023</u>
<u>2022</u>		<u>2023</u>
	Fixed Assets	
15,818	VAN	15,818
48,856	Balance Bank	84,401
-	Bills Payable	-
<u>£ 64,674</u>		<u>£ 100,219</u>
	Reserves	
44,486	B/f	64,674
<u>20,188</u>	Surplus for the period	<u>35,545</u>
<u>64,674</u>		<u>100,219</u>

## Independent Examiners Report



**CHARITY COMMISSION**  
FOR ENGLAND AND WALES

Independent examiner's report on the  
accounts

### Independent Examiner's Report on the accounts

**Report to the trustees/  
members of**

Dreamsai Milton Keynes Ltd

**On accounts for the year  
ended**

31 March 2023

**Charity no**

1184822

**Set out on pages**

11-12

I report to the trustees on my examination of the accounts of the above charity for the year ended 31<sup>st</sup> March 2023

**Responsibilities and basis of  
report**

As the charity's trustees, you are responsible for the preparation of the accounts in accordance with the requirements of the Charities Act 2011 ("the Act").

I report in respect of my examination of the Trust's accounts carried out under section 145 of the 2011 Act and in carrying out my examination, I have followed all the applicable Directions given by the Charity Commission under section 145(5)(b) of the Act.

Independent examiner's  
statement

I have completed my examination. I confirm that no material matters have come to my attention in connection with the examination

I have no concerns and have come across no other matters in connection with the examination to which attention should be drawn in this report in order to enable a proper understanding of the accounts to be reached.

**Signed:**

A handwritten signature in black ink, appearing to read "V Anand", is written over a horizontal line within a rectangular box.

**Date:** 22/12/2023

**Name:**

V Anand

**Relevant professional  
qualification(s) or body (if  
any):**

BA., LLB., ACMA., CIA

**Address:**

106 Walhouse Road  
Walsall  
WS1 2BE

**DREAMSAI MILTON KEYNES**

England & Wales - Charity number 1184822

---

# Accounts

---

# *DREAMSAI Milton Keynes*

## *Charity Number: 1184822*

Financial Statements for the year ended 31<sup>st</sup> March 2022.

**Report of the Trustees for the year ended 31 March 2022.**

The trustees present their annual report and independent examined financial statements for the year ended 31 March 2022 and confirm they comply with the Charities Act 1993, as amended by the Charities Act 2006, the trust deed, and the Charities SORP 2005.

**Reference and Administrative Information**

Charity Name	DREAMSAI Milton Keynes
Charity Registration Number	1184822
Principle Office	106, Walhouse road, Walsall, West Midlands, WS1 2BE

**Board of Trustees:**

Lakshmana Rao Kastala (Chair)  
Srinivasa Rao Velupula  
Surabhi Sharan

**Independent Examiners:**

Anand Associates  
106, Walhouse Road  
Walsall  
WS1 2BE

**Bankers:**

HSBC Bank plc  
The Bridge,  
Walsall,  
West Midlands  
WS1 1LN

## Contents

Report of the Trustees for the year ended 31 March 2022.....	4
Structure, Governance and Management .....	4
Governing Document.....	4
Organisation Structure.....	4
Risk Management .....	5
Objectives and Activities.....	5
Summary of the main activities .....	5
Strategies .....	6
Volunteer Contribution.....	6
Activities and Achievements .....	7
Food for SAI – Cooked Meals Project.....	7
Food Outreach – Festive Hampers, Food Parcels & School Breakfast.....	8
Blood Donation .....	8
Spiritual .....	9
COVID Vaccinations.....	9
Workshops .....	9
Partnerships .....	9
Financial Review.....	9
Reserves Policy.....	9
Principal funding sources.....	10
Statement of Trustee’s responsibilities .....	10
Income & Expenditure Account for period ending 31 <sup>st</sup> March 2021.....	11
Balance Sheet for the period ending 31 <sup>st</sup> March 2021 .....	12
Independent Examiners Report .....	13

## Report of the Trustees for the year ended 31 March 2022.

### Structure, Governance and Management

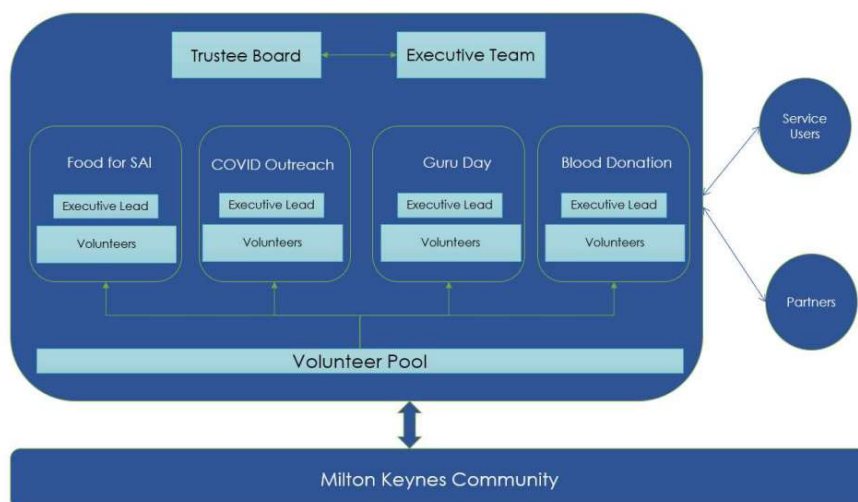
#### Governing Document

DREAMSAI Milton Keynes is constituted as a charitable trust registered with the Charity Commission in August 2019 under the charity number 1184822. It is governed by the deed of the trust.

#### Organisation Structure

Trustee Board is the ultimate accountability for the CIO, and responsible for strategic direction & organisational governance. The trustee board collaborates with executive team for the implementation. The executive team with the support of the volunteer pool operates the projects. The organisation foundations are underpinned by support from volunteers and members of Milton Keynes community.

Governance is at the heart of the strategic and operational decision making. DREAMSAI is registered with Fund Raising Regulator and adheres to the recommended guidelines. No cash policy is a modern & transparent fundraising policy successfully implemented since inception; all the monetary donations are received via digital channels only. Volunteers in contact with vulnerable members of the community are DBS checked, it is mandatory for all the volunteers handling food to be food safety certified. DREAMSAI is registered with Information Commissioner's Office (ICO) and utmost care is taken for the personal data. DREAMSAI uses Digital First strategy and minimal paper usage. Technology systems are in place for operational efficiency and information governance.



## Risk Management

The trustees has assessed the risk that charity faces and have drawn up a risk matrix which identifies the high/medium/low risks and its probabilities. The trustees review the risk matrix regularly at their meetings. The trustees are satisfied that systems are in place or arrangements are in hand to management the risks that have been identified – especially in the areas of Criminal Records Bureau checks, safeguarding policies and procedures, food and hygiene process and fund-raising regulations.

## Objectives and Activities

The objects of the CIO are

1. The advancement of the Hindu religion for the public benefit in Milton Keynes in particular by promoting the teachings of Shirdi Saibaba as set out in the Satcharita
2. The prevention of sickness and the preservation of the health by raising awareness of the needs of donors of blood, bone marrow and stem cells within Asian and Indian Communities
3. The prevent or relief of poverty for public benefit in Milton Keynes supplying food, hygiene items, essentials to homeless and needy people in temporary sheltered accommodation.

## Summary of the main activities

DREAMSAI is an inclusive charity run by the local Milton Keynes community working for the benefit of diverse communities and making a profound impact. Many community-led activities are initiated to positively contribute for community wellbeing and successfully motivated the residents to become more involved through volunteering. The charity's reach and impact are maximised by collaborating with various partners in the sector. DREAMSAI is a bridge in connecting and building stronger communities

Based on the teachings of Indian Saint Shirdi Sai, DREAMSAI organize spiritual events and celebrate Indian and diverse cultural festivals of various faiths, support homeless community and vulnerable elderly with free cooked meal and essential items, deliver free food & essential parcels to vulnerable communities, support local schools with breakfast packs, holiday food parcels, organise workshops and promote blood donations from ethnic minorities.

Every week hundreds of community members attend and benefit from the spiritual & cultural activities. Thousands of home cooked hot meals are served every year to the homeless or those in temporary accommodation. Festive Hampers are distributed to those in need during diverse festivities including Diwali, Christmas & Eid demonstrating our inclusive approach. The group has also been responsive and adaptive to the changing needs of this city and addressing the gaps to meet immediate community needs. Many lives are supported with the blood donated by DREAMSAI donors every year. DREAMSAI received the prestigious Queen's Award for voluntary service (an equivalent of MBE for volunteer groups) during the birthday honours in June 2021, from Late Her Majesty Elizabeth II. The highest award given to DREAMSAI from Her Majesty demonstrates the positive impact this group has created on our communities.

## Strategies

As part of expansion plans to meet demand, DREAMSAI successfully applied to lease the premises from Milton Keynes Community Foundation in November 2021 with rent subsidy. The primary purpose of this facility is to serve as a HUB for all existing DREAMSAI community projects & meeting the needs of the growing population. Planning permission for the change of use is due to be applied with Milton Keynes Local Authority in April 2022. Upon receiving the planning consent and necessary building works are completed as per Building Regulations, the services currently operated from various temporary premises including Unity Park Station, Milton Keynes Hindu Association community centre, Commercial Kitchens, Individual home kitchens, Personal garages, living rooms and cafes will be centralised to this new facility in 2023 & services will be expanded in the following years.

Thousands of users from across the diverse communities currently benefit from DREAMSAI activities and will continue to benefit from these new premises. The service users are from across the communities including elderly members, financially challenged families with school going children, families with poverty, homeless individuals, homeless shelters, youth, Indian community members & partner organisations. In addition to existing successful initiatives DREAMSAI would further host and anchor such constructive social engineering projects which are vital in bringing the community together in a way which will have a lasting positive impact on our communities. Engaging with cultural and spiritual activities enhance the mental health of the individual, which in turn benefits the mental health of the collective, leading to a happier and healthier society.

This new facility contributes towards the creation of safe, sustainable, mixed communities with good access to for all members of the community for social interaction. The users of all areas of Milton Keynes will significantly benefit from this facility. This facility would proudly represent the Diverse & Inclusive profile of Milton Keynes.

## Volunteer Contribution

DREAMSAI are 100% volunteer run organisation with 42% of them youth volunteers. An organisation structure is in place for strategy, governance, safeguarding and operational purposes. The number of volunteer hours given is quite staggering, and even more remarkable when all volunteers are holding down full-time jobs or in education. In a recent volunteer Survey, 96% of volunteers said, “By volunteering with DREAMSAI, I have a sense of fulfilment and am creating a positive impact on others”.

Every week hundreds of volunteers participate in preparing the food parcels, prepare cooked meals, door delivering the food parcels and cooked meals, procuring the items needed for food parcels, managing the inventory, organising the logistics, relationship with partner organisation and schools, organising blood donation camps, digital communications, reviewing and updating policies and procedures, maintaining and implementing required IT systems, data protection, managing the helpline, fundraising, financial management, operations and organising spiritual events.

The Trustee Board is the ultimate accountable and decision-making body. The Board and Executive team members work hand in hand with support provided by the volunteers. The organisation foundations are underpinned by support from volunteer pool and members of Milton Keynes community. The members of community interested to volunteer will be added to volunteer pool and then onboarded to specific projects by Executive Team. Executive Team are the leads managing Food for SAI, Food Outreach, Blood Donation and Spiritual projects. Experienced Volunteers who are interested & qualified to lead the projects will be appointed to Executive Team after due

consideration. Executive Team is a route to join the Board. An exception to this is the honorary board members who will be appointed from a chosen field of specialisation to benefit the organisation objectives.

DREAMSAI has 213 registered volunteers. Twenty-Nine youth members are also doing Duke of Edinburgh (DofE) voluntary work as part of their secondary school award scheme. Volunteers provide their services to either one project or multiple projects. Volunteers are recruited upon reference to ensure enhanced suitability check. All the interested volunteers' details will be added onto the volunteer pool upon their request. The personal details of the volunteers are securely managed in the online system with appropriate access management. DBS checks are performed to the volunteers who will be interacting with service users. The volunteers managing the Food for SAI project are also required to complete the Level 2 Food & Hygiene Safety certification. Renewed DBS checks of the new members of management team is completed in November 2021.

### Activities and Achievements

Being an ethnic group ourselves, we had a profound impact on reducing social inequalities and building stronger community cohesion by running local, community-led inclusive projects, which involves active engagement from diverse communities; all of which was achieved solely by volunteers.

DREAMSAI received the prestigious Queen's Award for voluntary service (an equivalent of MBE for volunteer groups) during the birthday honours in June 2021, from Late Her Majesty Elizabeth II. The highest award given to DREAMSAI from Her Majesty demonstrates the positive impact this group has created on our communities. The statement read - "The work your group does for the community was very much admired by the independent National Assessment Committee, chaired by Sir Martyn Lewis CBE, and I am delighted to inform you that your group has been selected to receive the Award in 2021. This represents a tremendous achievement for your organisation, and we hope that everyone involved, and particularly your volunteers, will feel immensely proud of it."

A presentation ceremony was organised on Saturday the 16th of October 2021 where Countess Howe, Her Majesty's Lord-Lieutenant of Buckinghamshire presented the Award Crystal and Certificate signed by her Majesty the Queen to DREAMSAI. High Sheriff of Buckinghamshire, Deputy Lord Lieutenants, Mayor of Milton Keynes, Councillors, Charity partners, Faith organisations, volunteers and a diverse range of guests attended the celebration.

Countess Howe in her speech said: "DREAMSAI is a small but highly organised, flexible, dynamic group that punches above its weight. For the last three years they have been able to rapidly respond to gaps in provisions for vulnerable people across the town of Milton Keynes."

"With the onset of the COVID 19 pandemic they immediately created effective new projects to reach out and support those in need, all of which was achieved solely by volunteers. The drive and energy of this group is palpable and derives from total commitment to their mission to meet the needs of people whatever their background as taught by their guru Shirdi Sai Baba."

### Food for SAI – Cooked Meals Project

Homelessness has become a major issue in Milton Keynes over the last few years. According to Vital Signs 2019, a report published by the MK Community Foundation, 1 in every 117 people in Milton Keynes are homeless. Many organisations in MK are providing various services to end Homelessness

but there is a gap for hot meal service. Hundreds of local households subscribed to the weekly run Food for SAI project, a community meal preparation and distribution programme - demonstrating the positive community engagement. With an average of 120 meals per week, a total of 6240 cooked meal packs along with water, fruit and snack were distributed to homeless community, homeless shelters, and vulnerable people in need. The cooked meal project also door delivered meals on the Christmas day to many families in association with partner organisations. Many vulnerable community members are dependent on this service every weekend. As per food hygiene requirements routine food standards inspection was completed by Milton Keynes Local Authority in November 2021 and were satisfied with the procedures.

#### Food Outreach – Food Parcels, School Packs , Breakfast Packs, & Festive Hampers

Since the start of the pandemic DREAMSAI have been giving free essential food parcels to families in need. Many organisations need support for the guests waiting for universal credits. Victims of domestic violence is on growth with guests placed in temporary accommodation. One in five city children are still living below the poverty line - and the problem is getting worse. Various types of food parcels are delivered weekly, free of charge to families in need, guests living in refuge centres or local schools. This year DREAMSAI has partnered with Food Bank for food parcel project and a data sharing agreement to maximise the reach and minimise the duplication. The collaboration has proved very successful, and the project has delivered over 3640 food parcels which enabled our vulnerable communities to have much needed meal on the dinner tables.

Breakfast is the most important meal of the day, but the number of children facing food poverty has continued to rise in MK, mirroring what is happening nationally. DREAMSAI delivered weekly breakfast parcels to various local primary schools during school term. These breakfast parcels contained cereals packs and milk sufficient for a week. In addition to breakfast packs, schools received food parcels every week and additional parcels during the half term and summer term holidays for children to take home.

Festive Hampers are delivered to guests celebrating festivals including Christmas, Easter, Eid & Diwali in collaboration with organisations of various faiths. The projects have proved very beneficial with volunteers from across the organisations working together for common goal in supporting those in need.

DREAMSAI also partnered with local supermarkets to place a food donation box which is collected by volunteers on regular basis. Food donation Box in two Morrisons superstores has filled up 182 times in the last year with average donated items for each collection of 80 per box and totalling over 15,000 items during the year. An amazing support by the shoppers of the supermarkets.

#### Blood Donation

As per report published by NHS Blood & Transplant, fewer than 5% of blood donors who gave blood are from ethnic communities. This is despite ethnic communities representing around 14% of the population. One of the 3 key objectives of DREAMSAI charity which was formed based on the teachings of Indian Saint Shirdi Sai is to “Raise awareness of the blood donation, bone marrow and stem cells within Asian and Indian Communities”. Being a community driven all volunteer run organisation, we play a significant role at grass roots in communicating the need for ethnic communities to donate blood, bone marrow and opt in for organ donation. We have successfully broken the myth of “if you are from Tropical countries, you cannot donate blood in UK” and changed the narrative to “if you travelled to Tropical countries wait for few months before donating blood”. Many donors who donate with DREAMSAI once or twice continue to make blood donations on their

own as well proving the fact that they “feel comfortable going on their own once they understand it”. A positive impact of this initiative.

### Spiritual Activities and Temple

As per 2011 census Milton Keynes has 3.3% Indian population. There is a significant growth in the last decade, estimations indicate that the growth of these communities would be 5% by next census. Milton Keynes as a new city does not have infrastructure to meet the changing demographics. The cultural and spiritual activities organised by DREAMSAI every Guru Day (Thursday) in the rented premises of Hindu Association is usually visited by an average of 100 community members every week and numbers increasing during the celebration of festivals or term holidays. It is crucial to build the facilities for the cultural wellbeing of these communities. The new premises leased by DREAMSAI where all the above services will be centralised would achieve the objective.

### COVID Vaccinations

As the volunteers has been providing front line care to the homeless and vulnerable elderly on a regular basis, in order to safeguard volunteer’s vaccinations are offered on priority to all front-line volunteers with the confirmation from Bedfordshire, Luton & Milton Keynes CCG. 90% of the volunteers availed the opportunity.

In addition, DREAMSAI worked with Community Engagement Teams of Milton Keynes Local Authority and BLMK CCG on raising awareness of Covid vaccination inequalities from February 2022 with an aim to conclude project in June 2022. Approximately 60 young people attending a COVID-19 information-sharing opportunity and gaining knowledge about COVID vaccination and prevention. 40 completed data survey responses from by young people. Leaflet distributed to young people and community to increase knowledge and confidence on COVID vaccination and prevention. Information was shared on website and social channels for wider community engagement.

### Workshops

Two workshops were conducted to benefit youth on Journey to Medical School and Demystifying Apprenticeships. 119 members of the community attended the workshops with one youth commenting “the most information workshop I have ever attended”

### Partnerships

As an inclusive group, the charity developed positive partnerships with many national & local organisations to collaborate and provide joined up services to widen the reach and impact while minimizing the duplication.

### Financial Review

#### Reserves Policy

The trustees have reviewed the reserves of te charity, Their policy is to hold enough to meet six months operating costs.

### Principal funding sources

The financial donations are only accepted using digital channels since inception, making this charity a pioneer in using this model. Majority of the donations are received using payment options provided on the website or using the card machine at the spiritual events conducted every Thursday. Corporate partner funding and grants are another source of income. In addition to the financial donations, the charity also receives the food donations from partners like food bank, local super markets and the communities. The charity is governed by the fund raising regulator.

### Statement of Trustee's responsibilities

The charity trustees are responsible for preparing an annual report and financial statements in accordance with applicable law and United Kingdom Accounting standards (United Kingdom Accepted Accounting Practice)

The law applicable to charities in England and Wales requires the charity trustees to prepare financial statements for each year which give a true and fair view of the state of affairs of the charity and of the incoming resources and application of resources of the charity for that period. In preparing the financial statements the trustees are required to:

Select suitable accounting policies and then apply them consistently; observe the methods and principle in the Charities SORP;

Make judgements and estimates that are reasonable and prudent; state where applicable accounting standards have been followed, subject to any material departures disclosed and explained in the financial statements;

Prepare the financial statements on the going concern basis unless it is inappropriate to presume that the charity will continue in business

The trustees are responsible for keeping proper accounting records that disclose reasonable accuracy at any time the financial position of the charity and to ensure that the financial statements comply with the Charities Act 1993, the Charities (Accounts and Reports) Regulations Act 2008 and the provisions of the trust deed. They are also responsible for safeguarding the assets of the charity hence taking reasonable steps for the prevention and detection of the fraud and other irregularities.

The trustee for the purposes of charity law who served during the year up to the date of this report are set out in page 1.

**Approved by the trustees and signed on the behalf by:**



**Lakshmana Rao Kastala (Chair)**

**12/01/2023**

Income & Expenditure Account for period ending 31<sup>st</sup> March 2022.

<u>For the year ended</u>			<u>31 March 2022</u>			
<u>2021</u>		<u>Totals</u>	<u>2022</u>		<u>Totals</u>	
<u>Restricted</u>	<u>Unrestricted</u>		<u>Restricted</u>	<u>Unrestricted</u>		
151,411	33,823	185,234	Total Income	122,238	40,160	162,399
			Less Expenses			
107,120	30,662	137,782	Charity - Food	102,835	13,629	116,464
	6,153	6,153	Spiritual Activities	-	15,031	15,031
-	-	-	VAN	-	-	-
-	-	-	Clothings	-	-	-
-	107,120	6,337	12,490	6,337	150,272	General Administration
	44,291	21,333	34,962	19,403	781	Net Surplus
		7	7		4	Other Income - Interest
<u>£ 44,291</u>	<u>£ 21,340</u>	<u>£ 34,969</u>	Total surplus	<u>£ 19,403</u>	<u>£ 785</u>	<u>£ 20,188</u>

Balance Sheet for the period ending 31<sup>st</sup> March 2022

<u>Dreamsai Milton Keynes Ltd</u>		
<u>Balance Sheet as at</u>		<u>31 March 2022</u>
<u>2021</u>		<u>2022</u>
	Fixed Assets	
	VAN	15,818
44,486	Balance Bank	48,856
-	Bills Payable	-
<u>£ 44,486</u>		<u>£ 64,674</u>
	Reserves	
9,517	B/f	44,486
<u>34,969</u>	Surplus for the period	<u>20,188</u>
<u>44,486</u>		<u>64,674</u>

# Independent Examiners Report


**CHARITY COMMISSION**  
FOR ENGLAND AND WALES

## Independent examiner's report on the accounts

### Independent Examiner's Report on the accounts

<b>Report to the trustees/ members of</b>	Dreamsai Milton Keynes Ltd		
<b>On accounts for the year ended</b>	31 March 2022	<b>Charity no</b>	1184822
<b>Set out on pages</b>	11-12		

**Responsibilities and basis of report**

I report to the trustees on my examination of the accounts of the above charity for the year ended 31<sup>st</sup> March 2021

As the charity's trustees, you are responsible for the preparation of the accounts in accordance with the requirements of the Charities Act 2011 ("the Act").

I report in respect of my examination of the Trust's accounts carried out under section 145 of the 2011 Act and in carrying out my examination, I have followed all the applicable Directions given by the Charity Commission under section 145(5)(b) of the Act.

#### Independent examiner's statement

I have completed my examination. I confirm that no material matters have come to my attention in connection with the examination

I have no concerns and have come across no other matters in connection with the examination to which attention should be drawn in this report in order to enable a proper understanding of the accounts to be reached.

**Signed:**  **Date:** 03/01/2023

**Name:** V Anand

**Relevant professional qualification(s) or body (if any):** BA., LLB., ACMA., CIA

**Address:** 106 Walhouse Road  
Walsall  
WS1 2BE

**DREAMSAI MILTON KEYNES**

England & Wales - Charity number 1184822

---

# Accounts

---

# *DREAMSAI Milton Keynes*

## *Charity Number: 1184822*

Financial Statements for the year ended 31<sup>st</sup> March 2021.

**Report of the Trustees for the year ended 31 March 2021.**

The trustees present their annual report and independent examined financial statements for the year ended 31 March 2021 and confirm they comply with the Charities Act 1993, as amended by the Charities Act 2006, the trust deed, and the Charities SORP 2005.

**Reference and Administrative Information**

Charity Name	DREAMSAI Milton Keynes
Charity Registration Number	1184822
Principle Office	106, walhouse road, Walsall, West Midlands, WS1 2BE

**Board of Trustees:**

Lakshmana Rao Kastala (Chair)  
Srinivasa Rao Velupula  
Surabhi Sharan  
Pramod Parepalli (until 25<sup>th</sup> oct 2020)

**Independent Examiners:**

Anand Associates  
106, Walhouse Road  
Walsall  
WS1 2BE

**Bankers:**

HSBC Bank plc  
The Bridge,  
Walsall,  
West Midlands  
WS1 1LN

## Contents

Report of the Trustees for the year ended 31 March 2021.....	4
Structure, Governance and Management .....	4
Governing Document.....	4
Organisation Structure.....	4
Risk Management .....	5
Objectives and Activities.....	5
Summary of the main activities .....	5
Strategies .....	5
Volunteer Contribution.....	6
Activities and Achievements .....	6
Food for SAI – Cooked Meals Project.....	7
Food Outreach – Festive Hampers, Food Parcels & School Breakfast.....	7
Blood Donation .....	8
Spiritual .....	8
Partnerships .....	8
Financial Review.....	8
Reserves Policy.....	8
Principal funding sources.....	8
Statement of Trustee’s responsibilities .....	8
Income & Expenditure Account for period ending 31 <sup>st</sup> March 2021.....	10
Balance Sheet for the period ending 31 <sup>st</sup> March 2021 .....	11
Independent Examiners Report .....	12

## Report of the Trustees for the year ended 31 March 2021.

### Structure, Governance and Management

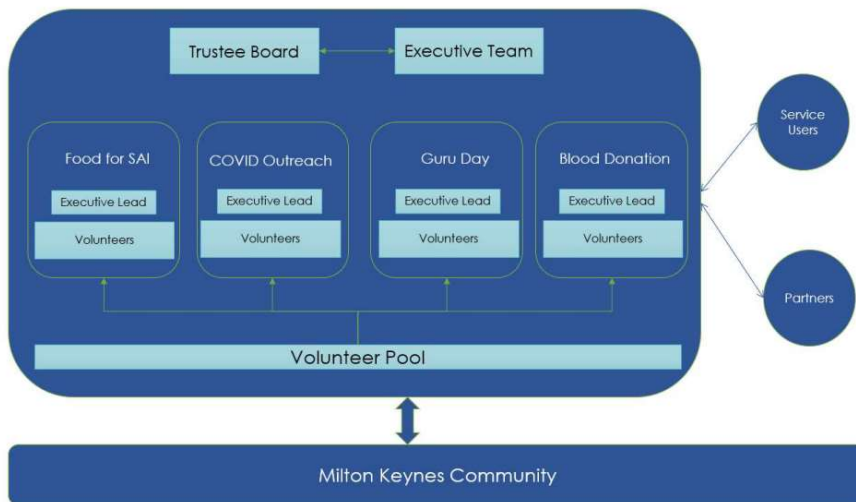
#### Governing Document

DREAMSAI Milton Keynes is constituted as a charitable trust registered with the Charity Commission in August 2019 under the charity number 1184822. It is governed by the deed of the trust.

#### Organisation Structure

Trustee Board is the ultimate accountability for the CIO, and responsible for strategic direction & organisational governance. The trustee board collaborates with executive team for the implementation. The executive team with the support of the volunteer pool operates the projects. The organisation foundations are underpinned by support from volunteers and members of Milton Keynes community.

Governance is at the heart of the strategic and operational decision making. DREAMSAI is registered with fund raising regulator. No cash policy is a modern & transparent fundraising policy successfully implemented since inception; all the monetary donations are received via digital channels only. Volunteers in contact with vulnerable members of the community are DBS checked, it is mandatory for all the volunteers handling food to be food safety certified. DREAMSAI is registered with Information Commissioner's Office (ICO) and utmost care is taken for the personal data. DREAMSAI uses Digital First strategy and minimal paper usage. Technology systems are used for operational efficiency and information governance.



## Risk Management

The trustee has assessed the risk that charity faces and have drawn up a risk matrix which identifies the high/medium/low risks and its probabilities. The trustees review the risk matrix regularly at their meetings. The trustees are satisfied that systems are in place or arrangements are in hand to management the risks that have been identified – especially in the areas of Criminal Records Bureau checks, safeguarding policies and procedures, food and hygiene process and fund-raising regulations.

## Objectives and Activities

The objects of the CIO are

1. The advancement of the Hindu religion for the public benefit in Milton Keynes in particular by promoting the teachings of Shirdi Saibaba as set out in the Satcharita
2. The prevention of sickness and the preservation of the health by raising awareness of the needs of donors of blood, bone marrow and stem cells within Asian and Indian Communities
3. The prevent or relief of poverty for public benefit in Milton Keynes supplying food, hygiene items, essentials to homeless and needy people in temporary sheltered accommodation.

## Summary of the main activities

DREAMSAI is an inclusive charity run by the local community working for the benefit of diverse communities. DREAMSAI Milton Keynes are making profound impact on the diverse communities. Many community-led activities are initiated to positively contribute for community wellbeing and successfully motivated the residents to become more involved through volunteering. The charity's reach and impact are maximised by collaborating with various partners in the sector. DREAMSAI is a bridge in connecting and building stronger communities

Based on the teachings of Indian Saint Shirdi Sai, DREAMSAI organize spiritual events and celebrate Indian and diverse cultural festivals of various faiths, support homeless community with free cooked meal and essential items, deliver free food & essential parcels to vulnerable communities and promote blood donations from ethnic minorities.

Every week hundreds of community members attend and benefit from the spiritual & cultural activities. Thousands of home cooked hot meals are served every year to the homeless or those in temporary accommodation. Festive Hampers are distributed to those in need during diverse festivities including Diwali, Christmas & Eid demonstrating our inclusive approach. The group has also been responsive and adaptive to the changing needs of this city and addressing the gaps to meet immediate community needs – our rapid response to COVID-19 pandemic being one of them. Many lives are supported with the blood donated by DREAMSAI donors every year.

## Strategies

In its current capacity DREAMSAI is fulfilling all its objectives without a base of its own. All the activities and projects are being executed from various physical premises of partners, the Trustees', & volunteers' own premises. The absence of a centralised hub /base has been an impediment in the maximising the reach & impact. The growing scale of operations would be better served by the centre which would be an anchor for not just the current projects but also for much bigger activities planned.

It is crucial for a growing city to establish infrastructure representing the demographics. It is evident that there are limited or non-existent hubs for diverse communities in Milton Keynes. DREAMSAI aspires to fill up this void by building a centre.

Apart from advancing the social cause, the centre will also host multi-faith orientated celebrations. Enacting the age-old Indian tradition of welcoming one and all, DREAMSAI, which is known for its social engineering and philanthropic activities, under the aegis of the central hub act as social glue to bring together all the diverse communities on humanitarian grounds and cultivate one-ness in multiplicity creating a unique example of creating a unity from diversity. This unparalleled act will enhance the diversity & inclusive profile of Milton Keynes

## Volunteer Contribution

DREAMSAI are 100% volunteer run organisation. An organisation structure is in place for strategy, governance, and operational purposes. The Trustee Board is the ultimate accountable and decision-making body. The Board and Executive team members work hand in hand with support provided by the volunteers. The organisation foundations are underpinned by support from volunteer pool and members of Milton Keynes community.

The members of community interested to volunteer will be added to volunteer pool and then onboarded to specific projects by Executive Team. Executive Team are the leads managing Food for SAI, Food Outreach, Blood Donation and Spiritual projects. Experienced Volunteers who are interested & qualified to lead the projects will be appointed to Executive Team after due consideration. Executive Team is a route to join the Board. An exception to this is the honorary board members who will be appointed from a chose field of specialisation to benefit the organisation objectives.

DREAMSAI has 142 registered volunteers. Fifteen youth members are also doing Duke of Edinburgh (DofE) voluntary work as part of their secondary school award scheme. Volunteers provide their services to either one project or multiple projects. Volunteers are recruited upon reference to ensure enhanced suitability check. All the interested volunteers' details will be added onto the volunteer pool upon their request. The personal details of the volunteers are securely managed in the online system with appropriate access management. DBS checks are performed to the volunteers who will be interacting with service users. The volunteers managing the Food for SAI project are also required to complete the Level 2 Food & Hygiene Safety certification.

## Activities and Achievements

The year has been challenging due to the COVID-19 pandemic. Despite the challenges posed by the pandemic – our group not only continued with regular projects but also doubled the hot meal donations and initiated new food parcel service to support the elderly. When the sudden lockdown has posed the challenges on the physical space our living rooms & personal garages were converted into warehouse to meet immediate need. MK Community Foundation report reveals that 64 per cent of city people do NOT believe MK is meeting the needs of its migrant communities. Some of our activities would address this challenge. All our volunteers who are working professional working 40 hours+ every week are going above and beyond their call of duty to support the social cause. It is

important to note that agile groups like ours are rising to the challenges and meeting the most immediate needs within our communities. The group has also been responsive and adaptive to the changing needs of this diverse city and addressing the gaps to meet community needs – an immediate response to COVID-19 pandemic being one of them. DREAMSAI services are available to anyone within the local community, independent of their race, colour, age, or sex. Humanity is at the heart of everything they do.

All services are funded by voluntary digital donations or corporate donations or funding. DREAMSAI is one of the first organisations to accept digital only donations since inception for modernization, streamlining of the financial accountability. DREAMSAI is registered with Fund Raising Regulator and adheres to the recommended guidelines.

#### Food for SAI – Cooked Meals Project

Homelessness has become a major issue in Milton Keynes over the last few years. According to Vital Signs 2019, a report published by the MK Community Foundation, 1 in every 117 people in Milton Keynes are homeless. Many organisations in MK are providing various services to end Homelessness but there is a gap for hot meal service. DREAMSAI started with delivering 25 meals every Saturday in April 2018 – but based on the demand the numbers have increased to 120 (almost an increase of 5 times) by 2021. The guests who are homeless or in temporary accommodations in Milton Keynes are dependent on the service every weekend.

#### Food Outreach – Festive Hampers, Food Parcels & School Breakfast

As lockdown was announced in March 2020, DREAMSAI has launched the food parcel service to support the elderly in self-isolation. The service was later extended to support everyone in need. Every guest who reached out to DREAMSAI during these unprecedented times has received support with complete discretion, no judgement, or questions. A survey performed with the food parcel recipients - 87% elderly guests responded that they haven't received support from any other agency and would have struggled without support from DREAMSAI. The list of organisations sending requests for food parcels to DREAMSAI is ever increasing.

Festive Hampers are delivered to guests celebrating festivals including Christmas, Easter, Eid & Diwali.

One in five city children are still living below the poverty line - and the problem is getting worse. Victims of domestic violence is on growth with guests placed in temporary accommodation. Many organisations need support for the guests waiting for universal credits. Two different types of food parcels are delivered weekly, free of charge, to school children. Breakfast is the most important meal of the day, but the number of children facing food poverty has continued to rise in MK, mirroring what is happening nationally - and the Covid-19 pandemic is contributing to this surge. DREAMSAI delivered a weekly breakfast parcel to various local primary schools during school term. These food parcels contained cereals packs and milk sufficient for a week. Since start of the pandemic DREAMSAI have been giving free essential food parcels to families with children during term holidays and summer holidays. The project has delivered over 6500 parcels which enabled our vulnerable communities to have 100,000 meals on dinner tables. 4000+ PPE were distributed to local BAME communities identified as high-risk group

## Blood Donation

As per report published by NHS Blood & Transplant, fewer than 5% of blood donors who gave blood are from ethnic communities. This is despite BAME communities representing around 14% of the population. DREAMSAI aim is to try and readdress this imbalance. Since the launch of our project, many Indian community members in Milton Keynes area have registered to donate blood. 80% of those donated blood through our call out confirmed that they have never given blood in their life and did it for the first time through DREAMSAI. A positive impact of this initiative.

## Spiritual

As per 2011 census Milton Keynes has 3.3% Indian population. There is a significant growth in the last decade, estimations indicate that the growth of these communities would double by next census. Milton Keynes as a new city does not have infrastructure to meet the changing demographics. It is crucial to build the facilities for the cultural wellbeing of these communities. DREAMSAI is leading an initiative to build a temple & community centre where all the above services can be centralised and will be an epitome of humanity. The cultural and spiritual activities organised by DREAMSAI in rented premises are usually experienced by 80 – 100 community members every week. Due to the pandemic the services have been moved to telecast only online live.

## Partnerships

As an inclusive group, the charity developed positive partnerships with many national & local organisations to collaborate and provide joined up services to widen the reach and impact while minimizing the duplication.

## Financial Review

### Reserves Policy

The trustees have reviewed the reserves of the charity, Their policy is to hold enough to meet six months operating costs.

### Principal funding sources

The financial donations are only accepted using digital channels since inception, making this charity a pioneer in using this model. Majority of the donations are received using payment options provided on the website or using the card machine at the spiritual events conducted every Thursday. Corporate partner funding is another source of income. In addition to the financial donations, the charity also receives the food donations from partners like food bank, local super markets and the communities. The charity is governed by the fund raising regulator.

## Statement of Trustee's responsibilities

The charity trustees are responsible for preparing an annual report and financial statements in accordance with applicable law and United Kingdom Accounting standards (United Kingdom Accepted Accounting Practice)

The law applicable to charities in England and Wales requires the charity trustees to prepare financial statements for each year which give a true and fair view of the state of affairs of the charity and of the incoming resources and application of resources of the charity for that period. In preparing the financial statements the trustees are required to:

Select suitable accounting policies and then apply them consistently; observe the methods and principle in the Charities SORP;

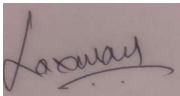
Make judgements and estimates that are reasonable and prudent; state where applicable where accounting standards have been followed, subject to any material departures disclosed and explained in the financial statements;

Prepare the financial statements on the going concern basis unless it is inappropriate to presume that the charity will continue in business

The trustees are responsible for keeping proper accounting records that disclose reasonable accuracy at any time the financial position of the charity and to enable them to ensure that the financial statements comply with the Charities Act 1993, the Charities (Accounts and Reports) Regulations Act 2008 and the provisions of the trust deed. They are also responsible for safeguarding the assets of the charity hence taking reasonable steps for the prevention and detection of the fraud and other irregularities.

The trustees for the purposes of charity law who served during the year up to the date of this report are set out in page 1.

**Approved by the trustees and signed on the behalf by:**



**Lakshmana Rao Kastala (Chair)**

**15/11/2021**


Income & Expenditure Account for period ending 31<sup>st</sup> March 2021.

		31 March 2021		2021		Totals	
		<u>Restricted</u>		<u>Unrestricted</u>			
	20,326	Total Income	190,416	43,809		234,225	
		Less Expenses					
6,495		Charity - Food for Sai	139,890	-		139,890	
7,988		Spiritual Activities	6,349	-		6,349	
		VAN	27,563	-		27,563	
620		Clothings	-	-		-	
1,224	16,327	General administration	-	173,802	4,298	4,298	178,100
	3,999	Net Surplus	16,614	39,511		56,125	
	-	Other Income - Interest	-	7		7	
	<u>£ 3,999</u>	Total surplus	<u>£ 16,614</u>	<u>£ 39,518</u>		<u>£ 56,132</u>	

Balance Sheet for the period ending 31<sup>st</sup> March 2021

<u>Dreamsai Milton Keynes Ltd</u>		
<u>Balance Sheet as at</u>		<u>31 March 2021</u>
<u>2020</u>		<u>2021</u>
	Fixed Assets	
-	VAN	27,563
9,517	Balance Bank	44,486
-	Bills Payable	6,400
<u>£ 9,517</u>		<u>£ 65,649</u>
	Reserves	
5,518	B/f	9,517
3,999	Surplus for the period	56,132
<u>9,517</u>		<u>65,649</u>

## Independent Examiners Report

Independent Examiner's Report on the Accounts			
<b>Report to the trustees/ members of</b>	Dreamsai Milton Keynes		
<b>On accounts for the year ended</b>	31 March 2021	<b>Charity no</b>	1184822
<b>Set out on pages</b>	10-11		
	I report to the trustees on my examination of the accounts of the above charity for the year ended 31 <sup>st</sup> March 2021		
<b>Responsibilities and basis of report</b>	As the charity's trustees, you are responsible for the preparation of the accounts in accordance with the requirements of the Charities Act 2011 ("the Act").		
	I report in respect of my examination of the Trust's accounts carried out under section 145 of the 2011 Act and in carrying out my examination, I have followed all the applicable Directions given by the Charity Commission under section 145(5)(b) of the Act.		
<b>Independent examiner's statement</b>	I have completed my examination. I confirm that no material matters have come to my attention in connection with the examination		
	I have no concerns and have come across no other matters in connection with the examination to which attention should be drawn in this report <u>in order to enable a proper understanding of the accounts to be reached.</u>		
<b>Signed:</b>		<b>Date:</b>	12/11/2021
<b>Name:</b>	V Anand		
<b>Relevant professional qualification(s) or body (if any):</b>	BA., LLB., ACMA., CIA		
<b>Address:</b>	106 Walhouse Road		
	Walsall		
	WS1 2BE		