

RIVERSIDE PARENTS & CARERS ASSOCIATION

Registration Number: 1184485

ANNUAL REPORT

July 2020 – June 2021



Who are we?

The Riverside Parents & Carers Association (RPCA) is a CIO, charity providing free services for children under the age of 5 years old and their families in the London Borough of Southwark.

Registration Number: 1184485

Our aims are:

To provide free regular soft play sessions for under 5s and their parents/carers. We want to keep our sessions free and open to all local families from any social background.

To encourage low-income and economically deprived families to engage in a community activity and have access to help and assistance from other services offered by the London Borough of Southwark where necessary.

For all families to keep engaging and attending our sessions to receive support from their peers, our staff and other professional experts in child development in order to help identify families with additional need that we may be able to support and/or refer.

Our staff members provide a safe, stimulating environment for our families to play, learn and develop and a great platform for parents to meet other parents. Staff members are fully trained to safeguard all children attending our sessions and to help our local families, their babies and young children to achieve the best start in life.

Sessions are held at Salmon Youth Centre, 43 Old Jamaica Road SE16 4TE

How we operate?

We currently have 3 Trustees, who meet regularly typically on a monthly basis along with our Operations Manager.

We regularly advertise and promote the need for additional volunteers and committee members. We are actively looking to add Trustees to our board, most likely actioned post Covid.

Any Trustee / Committee member must declare any relevant personal interest.

Address: Tayler Bradshaw Accountants
16 High Street
SAFFRON WALDEN
CB10 1AX

Phone: 07538726555

Email: info@riversidesoftplay.co.uk

Website: www.riversidesoftplay.co.uk

Trustees

Linda Hudson	Flat 2, Haredale House, East Lane, London SE16 4UZ
Nathan John	16, Gomm Rd, London SE16 2TX
Roger O'Sullivan	1 Falkland Place, London NW5 2PN

Finance

Finance

- a) The Trustees shall keep proper accounts of all monies belonging to Riverside Parents and Carers.
- b) The Treasurer/ Trustees will be responsible for managing the financial affairs of Riverside Parents and Carers.
- b) All payments made from the account must be reviewed/ approved in the committee meetings by at least two members.
- c) Annual independently examined accounts shall be provided as part of our obligations to submit to the Charity Commission
- d) All funds shall be lodged in the Riverside Parents and Carers bank account, with secure access to trustees/ Treasurers only
- e) The income for the organisation shall be applied solely towards the objectives and aims of the [SEP] organization as set out above and no payment shall be made to any member or honorary officer except the repayment of out of pocket expenses.

Finance Statement

2020/21 remained a challenging period logistically, given the ongoing restrictions for Covid. We focused on maintaining a service, continuing our partnership with the Children centre and looking for opportunity to provide a meaningful service to the community.

This was our second year of operating as a Charity, so RPCA looked to leverage the status to gain additional funding routes. However, our main contributions continued to come from from Bermondsey and Rotherhithe Children's Centre, who will continue to support us over the 2021/22 period.

RPCA Trustees meet monthly, with the core aim to monitor our ongoing Financial position, Safeguarding obligations and SLA's (expectations set by our funders). We are solvent, with low turnover and have no creditors, however, we continue to monitor our costs and seek additional funding streams.

We are dependant on our funding and have sourced additional streams to steams.

We would welcome any additional enquires around funding, support, volunteers, or individuals keen to become Trustees.

Independent Examiner Statement



Independent Examiner's Report to the trustees of Riverside Parents and Carers Association

I report on the accounts of the above Charity for the year ended 30th June 2021.

Respective responsibilities of trustees and examiner

The charity's trustees are responsible for the preparation of the accounts. The charity's trustees consider that an audit is not required for this year under section 144(2) of the charities Act 2011 (the 2011 Act) and that an independent examination is needed.

It is my responsibility to:

- examine the accounts under section 145 of the 2011 Act
- to follow the procedures laid down in the general direction given by the commission under section 145(5)(b) of the 2011 Act
- to state whether particular matters have come to my attention

Basis of independent examiner's report

My examination was carried out in accordance with the general directions given by the Charity Commission. An examination includes a review of the accounting records kept by the charity and a comparison of the accounts presented with those records. It also includes consideration of any unusual items or disclosures in the accounts and seeking explanations from you as trustees concerning any such matters. The procedures undertaken do not provide all the evidence that would be required in an audit and consequently no opinion is given as to whether the accounts present a 'true and fair view' and the report is limited to those matters set out in the next statement.

Independent examiner's statement

In connection with my examination, no matter has come to my attention:

- (1) which gives me reasonable cause to believe that in any material respect the requirements:
 - to keep accounting records in accordance with Section 130 of the 2011 Act and
 - to prepare accounts which accord with the accounting records and comply with the accounting requirements of the 2011 Acthave not been met or
- (2) to which, in my opinion, attention should be drawn in order to enable a proper understanding of the accounts to be reached

A handwritten signature in blue ink, appearing to read 'D Watts'.

David Watts FCA
Newton & Garner Ltd
47 Topsfield Parade
Tottenham Lane
Hornsey
London
N8 8PT
26th April 2022

Registered to carry on audit work in the UK by the Institute of Chartered Accountants in England and Wales
Registered Office: Building 2, 30 Friern Park, North Finchley, London N12 9DA
Directors: D.L. Watts FCA R. Knight FCCA ATII P. Raval ACA
47 Topsfield Parade, Crouch End, London, N8 8PT
Telephone: 020 8340 4779 Fax: 020 8340 0190 Email: crouchend@newtonandgarner.co.uk
Registered in England & Wales No: 5963019

ACHIEVEMENTS, PERFORMANCE & PUBLIC BENEFIT

Q3 2020

July – September

Q4 2020

October - December

Due to the Covid-19 and National Lockdown in the UK and Local Authority Restrictions we couldn't resume our services during this year to protect and safeguard the local families.

ACHIEVEMENTS, PERFORMANCE & PUBLIC BENEFIT

Q1 2021

January – March

Due to the Covid-19 and National Lockdown in the UK and Local Authority Restrictions we couldn't resume our services in this quarter to protect and safeguard the local families.

ACHIEVEMENTS, PERFORMANCE & PUBLIC BENEFIT

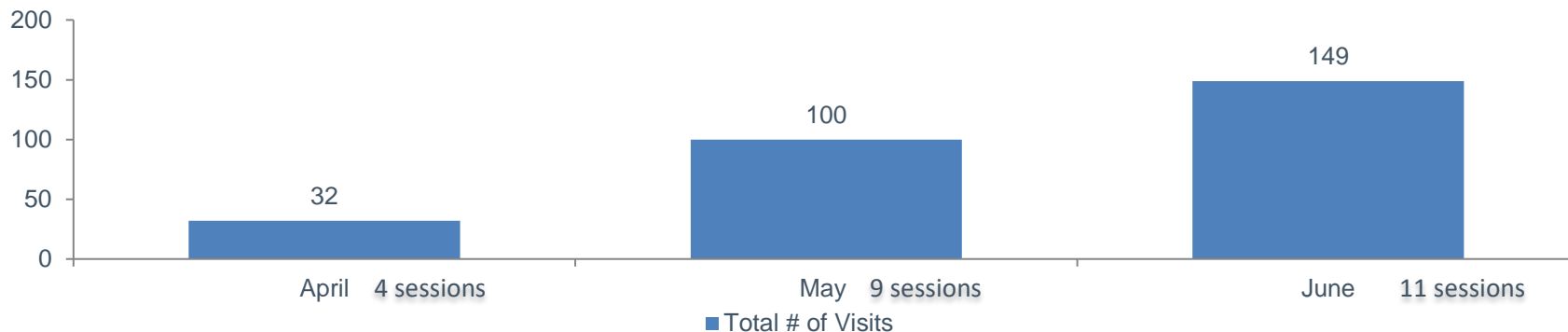
Q2 2021
April – June

We received the green light from the Local Authority to re-start our sessions outside and with reduced capacity.

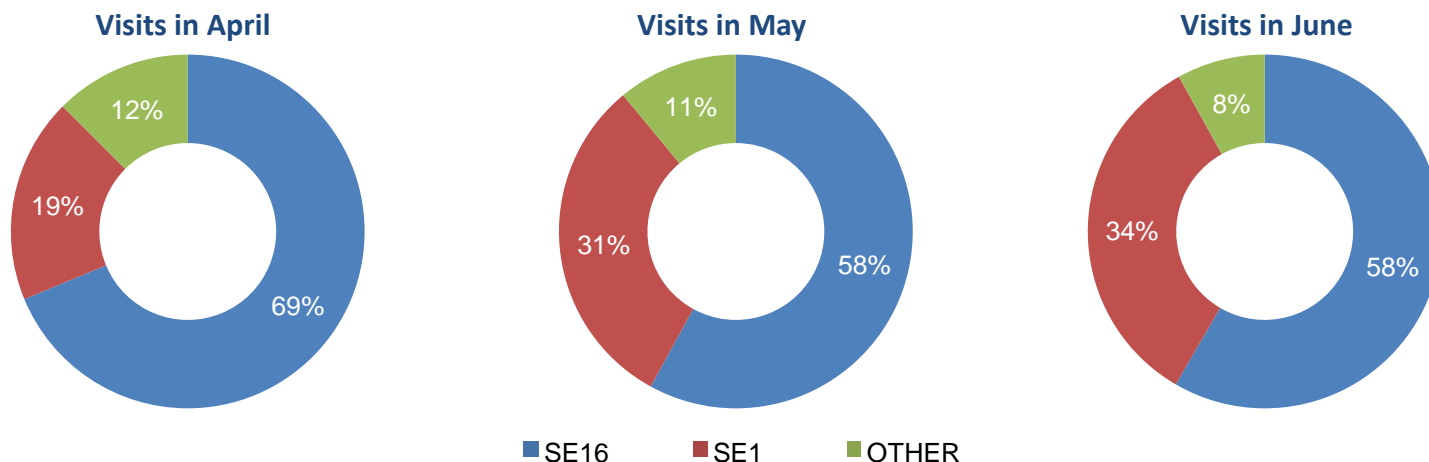
In Partnership with Bermondsey and Rotherhithe Children centre we were able to use their outdoor space to open our sessions for the local children and their families .

Quantitative Data for Q2 2021 (Covid-19 Measures)

Total # of Children aged 0-5 years Visits by month



Breakdown of Visits by Child's Post Code

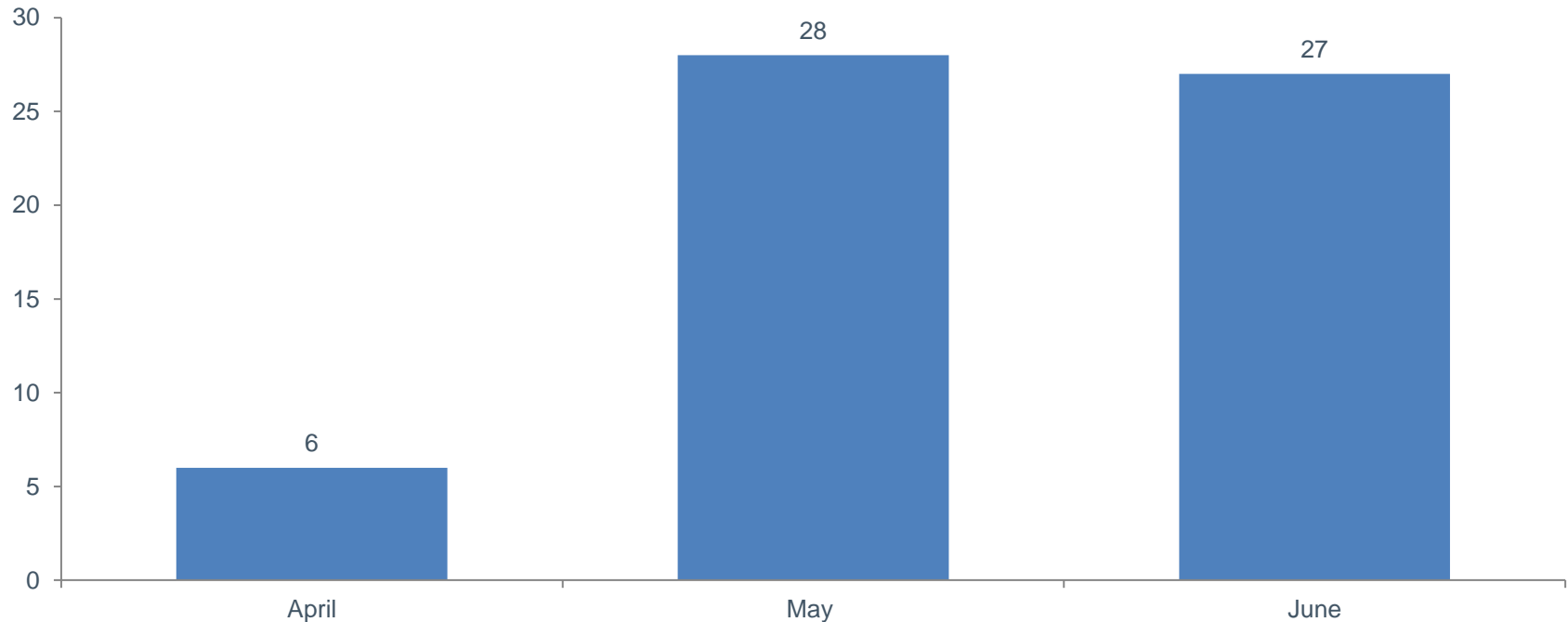


Average of 93 visits per month (of which ~94% Kids from SE16 and SE1 Postcode)

Figures taken from booking form - children only who attended

Quantitative Data for Q2 2021 (Covid-19 Measures)

New registrations



Total new family registrations over the quarter: 61

Figures taken from booking form - children only who attended

Re-opening sessions for children 0-5 years old

Outdoors sessions

From April 19th , we were able to re-start some regular and reliable services to the local families in partnership with Bermondsey and Rotherhithe Children Centre.

We were offered by Bermondsey and Rotherhithe Children Centre to use Ellen Brown Centre at Spa Garden and Rotherhithe Children Centre at Southwark Park . At this stage, we were only running outdoors sessions according with Covid-19 Government guidelines.

We created an outdoors programme that offered exercises, music and movement, storytelling, crafts activities and play doh. Later on, when restrictions were eased we also incorporated music instruments, water and sand play, role play with Home corner, tricycle, scooters joining in with *the 50 Things app launched by Southwark Council* .

These sessions were soon fully booked and we also offered a waiting list service.

Ellen Brown @ Bermondsey Spa Gardens on Mondays @10:00 – 11:10

Rotherhithe Children's Centre @ Southwark Park on Tuesdays @10:00 – 11:10

We encouraged parents and carers to download the app and we also incorporated some of the “things” in our sessions to empower parents and carers to do with their child/children at home too.



Re-opening sessions for children 0-5 years old

Baby session – (0-12 months old) – Ellen Brown Centre

We heard our community feedback and from Mid-May we were able to add one more session per week targeting babies that were born during lockdown and couldn't experience any activities, socialise and interact with other children and adults. It has been a Bliss to see so many babies and mums playing, interacting, making friends, singing, clapping and experiencing the world.



Baby session @ Ellen Brown Centre on Wednesdays @10:00 – 11:10

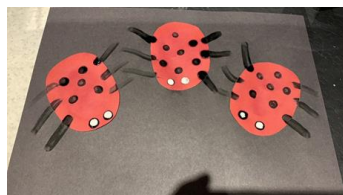
Soft Play Planning and Development Outcomes and Equality Impact

Incorporating the 50 things app --- #4 Make your Mark

Every week we offered at least one activity to Make your mark in the world to work with families. From painting , how to make play doh, vegetable printing etc...



Make Your Mark



Soft Play Planning and Development Outcomes and Equality Impact

50 things to do before you are 5



#20

Mini Artists



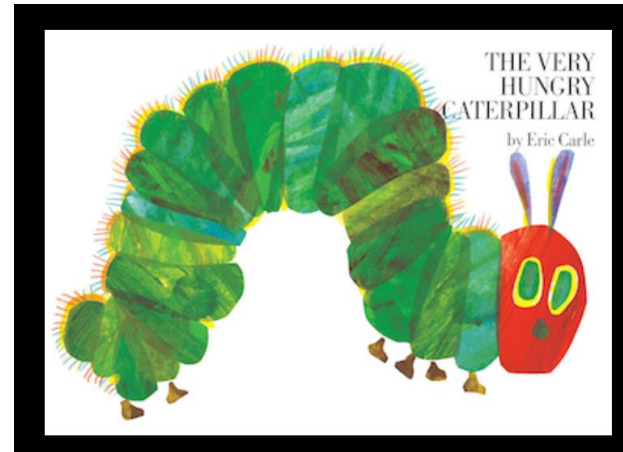
#4

Make Your Mark



Soft Play Planning and Development Outcomes and Equality Impact

Storytelling and crafty session -- The very Hungry Caterpillar by Eric Carle



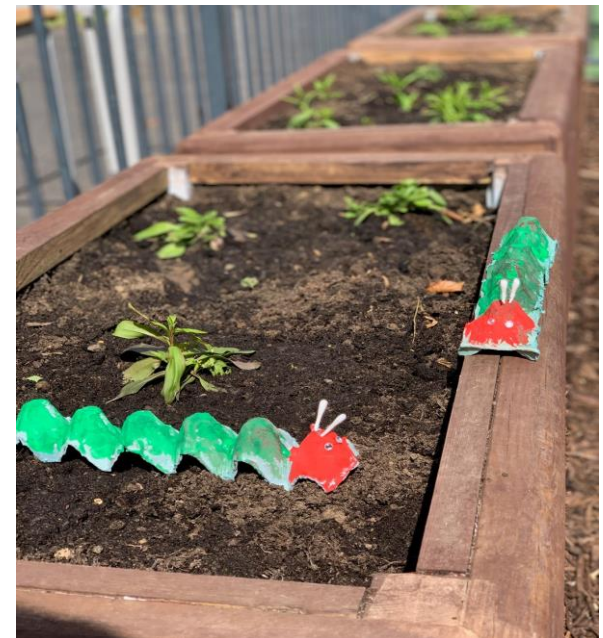
Soft Play Planning and Development Outcomes and Equality Impact

Storytelling and crafty session -- The very Hungry Caterpillar by Eric Carle

Some caterpillars have visited our Gardens!



Mini Artists



Soft Play Planning and Development Outcomes and Equality Impact

Make your mark in the world

Sunflower collage



Planting
cress seeds

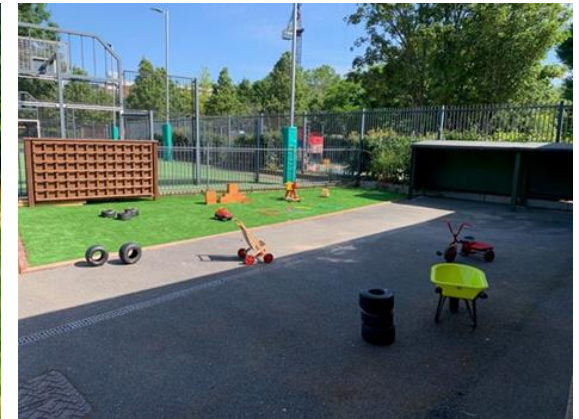


Painting
and Play
doh



Soft Play Planning and Development Outcomes and Equality Impact

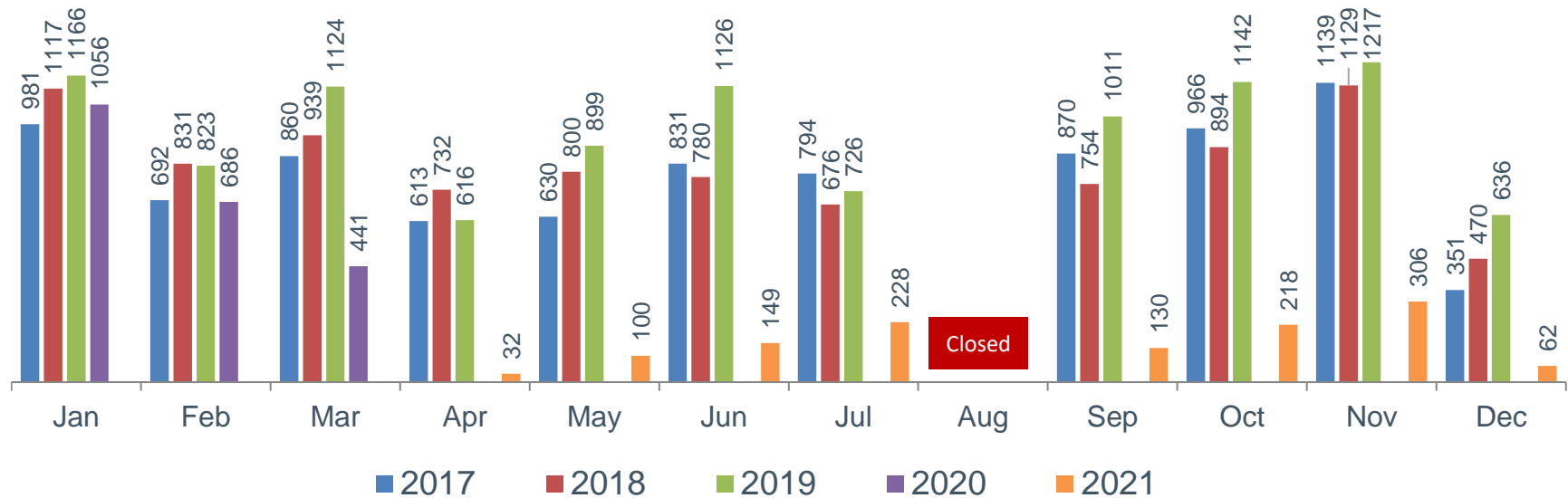
Setting up role play outside



Soft Play Statistics 2017-2021

Visitor numbers (children) growing each year until Covid

Total Visits by Year



2017 = 8727 visits

2018 = 9122 visits

2019 = 10,486 visits

2020 = 2,183 visits

2021 = 1225 (end April to 7th December – we closed early because of the increased cases of Omicron)

Comments:

- 2020 – Lockdown started end of March and we were closed as per government guidelines. From September, October we offered a few outdoors sessions for very limited number of families. Then came another lockdown until March 2021.
- 2021 – Re-opened with outdoors sessions at the end of April maximum 15 adults. **From July – we re-started Soft play Session indoors back at Salmon Centre (30 adults maximum)**

Soft Play Statistics 2017-2021

New family registrations growing each year until Covid

New Family Registrations by Year



2017 = 471

2018 = 501

2019 = 544

2020 = 132 (Jan – March)

2021 = 182 (end April to 7th December – we closed early because of the increased cases of Omicron)

Comments:

- 2020 – Lockdown started end of March and we were closed as per government guidelines. From September, October we offered a few outdoors sessions for very limited number of families. Then came another lockdown until March 2021.
- 2021 – Re-opened with outdoors sessions at the end of April maximum 15 adults. **From July – we re-started Soft play Session indoors back at Salmon Centre (30 adults maximum)**

Profit and Loss Statement

Riverside Parents and Carers Association

Year ended 30th June 2021

Funding / Monies Received

Funding Grants + Donations	24,372.01
Total Funding / Monies Received	24,372.01

Expenses

Salaries	15,626.20
Rent	2,000.00
Other Expenses	965.94
Total Expenses	18,592.14

Surplus for the Year	5,779.87
-----------------------------	-----------------

Opening bank balance	2,264.53
Closing bank balance	8,044.40