

# **Oxford Triratna Annual Return 2023-24**



*c/o Peace House, 19 Paradise Street, Oxford, OX1 1LD*



## Aims and Purposes

Oxford Triratna (OT, 'our', 'we', the Charity) is a charitable incorporated organisation responsible for the advancement of the Buddhist religion. This means communicating and practising the ideal of Human Enlightenment, exemplified by Siddhartha Gotama, the Buddha. It means communicating and practising the Dharma, the Buddha's teaching, and creating a community, or sangha, of individuals committed to the Buddhist life. It does so in collaboration with other groups and centres within the Triratna Buddhist Community. The Buddha, Dharma, and Sangha are known collectively as the Three Jewels, and they are the totality of the Buddhist religion.

OT's particularly responsibilities concern the English county of Oxfordshire, and specifically the city of Oxford. OT's activities are not restricted to this area.

## Objectives and Activities

OT is committed to enabling as many people as possible to become a part of its sangha,. OT maintains an overview of all activities taking place through public classes and invitation-only study groups and events. These activities support the practice of Buddhism as a way of life, enabling individuals to make a voluntary commitment to the Buddhist life to the extent that they wish. Central to this is support of the practice of Buddhist ethics, meditation, and wisdom.

When planning activities for the year, OT have considered the Charity Commission's (CC) guidance on public benefit and, in particular, the specific guidance on charities for the advancement of religion. We seek to enable ordinary people to discover Buddhism, practise it, and realise its teachings as part of our community through:

- Ethics, Meditation, and Devotional practice;
- Learning about the Dharma;
- Connecting with the ideal of the Buddha and learning what it means to adopt this as an ideal for themselves.
- Provision of pastoral care for people living as part of the community.
- Missionary and outreach work

To enable this, we usually rent a room on a sessional basis, broadcasting our public events to our closed Facebook Group. We also conduct discussion groups over Zoom.

## Achievements and Performance

### Sangha Nights

We have continued to benefit from meeting in the Hodgkin Room at Peace House, which in September expanded to its original size (following the end of the building work across



the road and the dismantling of the partition separating the builder's office). This has made accommodating larger numbers more comfortable and, as if on cue, the numbers attending have swelled: from an average of 20.7 in the year prior to September to an average of 24.9 since then.

In consultation with regulars who attended via Zoom, and on account of the extra burden on the team that Zoom required, we decided to stop running hybrid events in October, broadcasting our Sangha Nights live to our Facebook Group, via mobile phone. This may have also contributed to the increase in numbers.

In December 2023 we heard that the Fellowship of Reconciliation was intending to make the whole of Peace House available for let to a single organisation. This prompted us to begin a search of other possible venues, receiving many suggestions from members of our community. As there has been almost no interest from another organisation, as of April 2024, we await further news on this front.

During this period we concluded our year on the theme of Wisdom, including series on 'How to tell if someone else is wise?' (drawing on the Nalaka Sutta); 'How to be unwise (and how to tread the Middle Way), looking at extreme views; a return to Botley Park for ReWild your Mind; "How to be a wise..." considering how Buddhist wisdom applies in our relationships and roles; Sangharakshita's poetry; the Heart Sutra; and a visit from Nagabodhi to launch his book *Sangharakshita: The Boy, The Monk, The Man*.

We then began a year on the theme of Mindfulness, touching on the Satipatthanas and mindful communication.

Since September 2023, Jenifer, a Mitra training for Ordination, has led the practical arrangements for Sangha Night: convening a team, organising the setting up and dismantling of our shrine room, overseeing refreshments, and collecting donations. This has been very welcome, as it has freed up the Order members to concentrate more on the teaching and friendship sides of Sangha Nights.

## Introductory Events

'Rewild your Mind', a series of evenings held in Botley Park, was publicised to newcomers as an introduction to meditation and attracted around 30 new people, in addition to regulars at Sangha Night who also attended.

## Day and Weekend Retreats

We ran two residential retreats during this year, one in April (15 bookings) on the theme of mettā, and one in December (24 bookings) on the Buddha's advice to Bahiya. Both were hosted at Adhithana in Herefordshire.

In addition to this, we participated in two 'combined Sangha' events at Adhithana: a week in July (attended by 6 people from Oxford, including Vajrasakhi and Prajnaketu) on the Bodhicaryavatara; and a long weekend in March (attended by 7 including Vajrasakhi and Sthiradeva) on the theme of 'A Taste of Freedom'.

We also ran a retreat day in September to celebrate the Padmasambhava festival, during which we conducted the mitra ceremonies of Lottie and Danni.



## Mitra Study

In OT we believe the Buddhist life is one of commitment to the Buddha, Dharma, and Sangha. The classes we offer to the public are offered as an invitation, so that anyone can come and see for themselves whether, and how, they make such a commitment. In the TBC, adopted too in the OT, there are two major acts of commitment. These are becoming a Mitra and Ordination.

Mitra means ‘friend’, even spiritual friend, and is connected with a word meaning love. In the TBC becoming a Mitra has three elements. First, it means to consciously adopt the Buddha, Dharma, and Sangha as the values by which to live. Second, it means to put those principles into practice by adopting five ethical precepts: loving-kindness; generosity; simplicity/stillness/contentment; truthful communication; and a clear, bright, awareness. Finally, becoming a Mitra entails making a commitment to the TBC as the primary sangha in which to live out the Buddhist life.

At the beginning of the year the Charity had 16 active mitras. Two people requested to become mitras, and both became mitras at our Padmasambhava Day in September.

An aspect of the training offered by OT is Mitra Study. This is led by an Order Member and occurs in single sex groups of, usually, not more than eight people. An online women’s mitra study group led by Siddhimala involves two women from Oxford.

We also continued the mixed study mornings, exploring *Living Ethically*, a commentary by Sangharakshita on *Nagarjuna’s Precious Garland*. This continued until the summer. In the autumn we changed focus and split the participants into single sex groups led by Vajrasakhi (supported by Ellie) and Prajnaketu (supported by Sthiradeva). Initially we hoped to run day-long study sessions on Sangharakshita’s *A Guide to the Buddhist Path*. By the end of the autumn, we recognised that a whole day of study was a bit much, and we returned to mornings. In total 19 people (including leaders) have joined these sessions.

Sthiradeva continues to meet with two men Mitras, and a non-Mitra friend. The Charity welcomes such developments as it values the commitment and intimacy of smaller group environments to facilitate a deeper appreciation of the Buddha, Dharma, and Sangha.

## Ordination

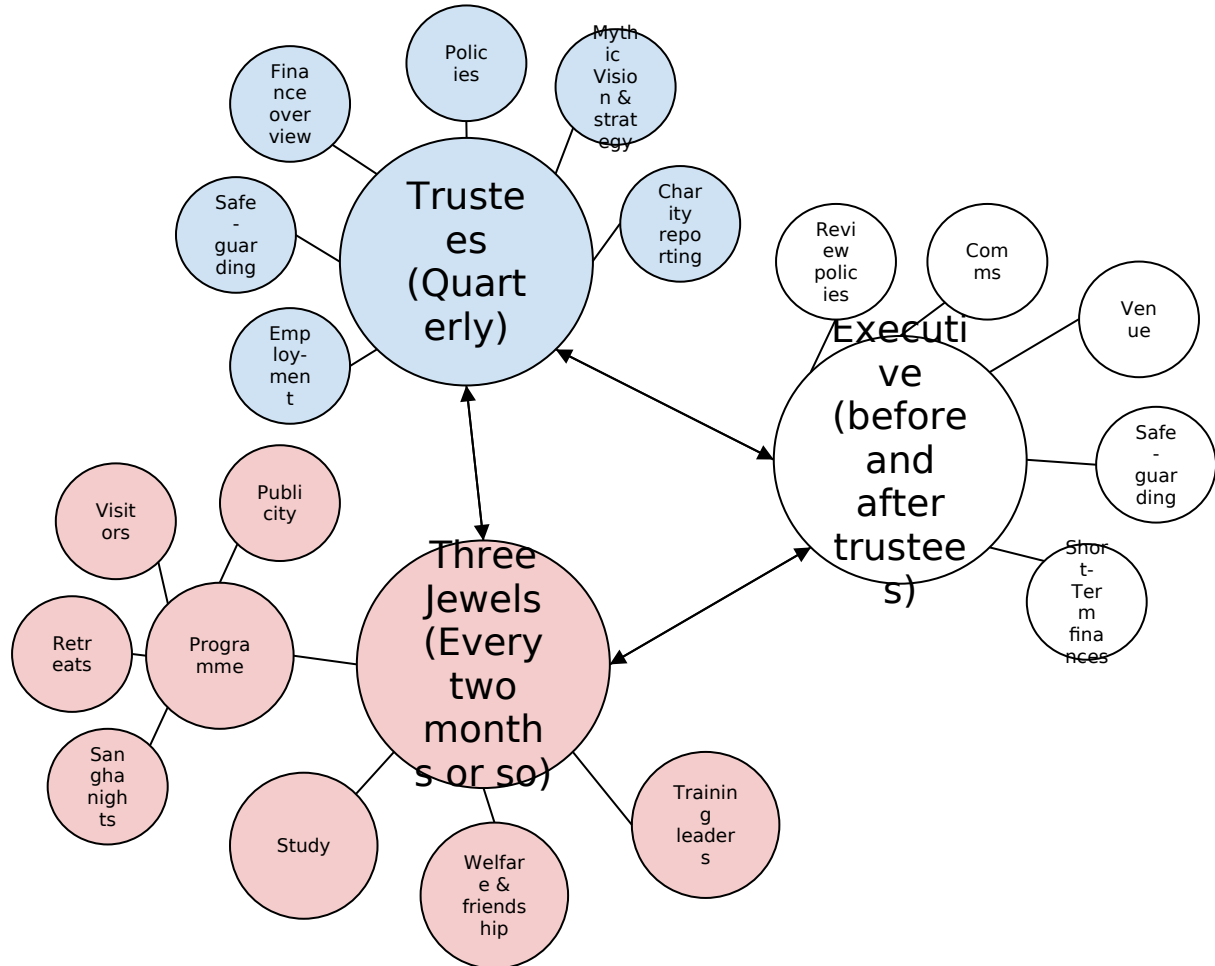
Those who wish to take their commitment to the TBC and Buddhism deeper can ask for ordination. The individual will then embark on a series of retreats that trains them for the purpose of joining the Triratna Buddhist Order (TBO). As of April 2024 there are 7 women and 1 man actively training for ordination. The 7 women meet in two separate groups, one composed only of 5 mitras based in Oxford, which moved to an in-person arrangement when Jenifer moved to the UK; and an online one involving women from outside Oxford. The other two women join an online group whose members are spread out across the UK.

## Team, trustees and structures

This year, Padmakumara has stepped back from leading events for Oxford Triratna, while remaining involved as a trustee and member of the management team, and continuing to meet with people in the Sangha. In November, Padmakumara stepped down as Chair, after 9 valued years in the role, handing on to Prajnaketu on Sangha Day.



We also recognised that we were struggling in our trustee meetings to discuss everything that needed to be discussed, especially the ratification of policies. Sthiradeva, Padmakumara, and Prajnaketu recommended establishing another body, intermediate between the Trustees and the management team, to prepare policy documents and agendas, as well as to follow through the actions from, the Trustee meetings. We alighted on the following structure:



Whose members are:

Trustees	Executive (subset of trustees)	Three Jewels (all the Order members in Oxford)
<ul style="list-style-type: none"> <li>Prajnaketu (Chair and safeguarding officer)</li> <li>Padmakumara (Treasurer)</li> <li>Sthiradeva (Secretary and safeguarding trustee)</li> <li>Vilasamuni</li> <li>Sangharuchi</li> </ul>	<ul style="list-style-type: none"> <li>Prajnaketu</li> <li>Padmakumara</li> <li>Sthiradeva</li> </ul>	<ul style="list-style-type: none"> <li>Prajnaketu</li> <li>Vajrasakhi</li> <li>Sthiradeva</li> <li>Padmakumara</li> </ul>



## Pastoral Care and Safeguarding

The Charity only runs classes for adults, and OT recognises that some of them have vulnerabilities. We are careful to do whatever we can so that everyone joining these classes feels welcomed and is safe from harm. When Sthiradeva joined the Board, he took on the responsibility as Safeguarding Trustee. On an executive level, Prajnaketu operates as Safeguarding Officer. Both deal with any issues and reported to the Board regularly on safeguarding matters.

There were no incidents to report to the Charity Commission.

The Charity encourages Mitras and friends to support the running of our classes. For in-person activities, this can involve them meeting the public as they arrive. Sometimes this means having contact with the public without a member of OT present. Unlike in previous years, no training sessions were held on safeguarding matters, however, Triratna's overall Safeguarding Team produced guidance on good practice for online meetings software such as Zoom, as well as for in-person meetings. This guidance was followed by the Charity and included, for instance, not creating break-out groups of pairs, as this could not be monitored.

Pastoral care largely occurs in one-to-one meetings and as part of the broader approach of friendship known as *Kalyana Mitrata*. These one-to-one meetings are key to supporting people in their deepening of their Buddhist practice.

## Triratna Buddhist Community

OT is an independent charity in relationship with other independent charities in the Triratna Buddhist Community. Participants in our activities are in contact with participants of other Triratna charities, through attending retreats together and visiting urban centres. We also benefit from central Triratna institutions such as thebuddhistcentre.com and Windhorse Publications, whose opportunities we share with OT's participants.

## Interfaith and Educational Activity

The Charity does not have its own building. Along with limited human resources the capacity to develop the educational aspect of our activity is therefore hampered. That said, in January 2024, Prajnaketu responded to an invitation to visit Woodgreen School in Witney, in which he talked to and received questions from a group of around 70 sixth-formers, as part of their mandatory religious education.

Prajnaketu also participated in Oxford's annual Interfaith Walk in June 2023, reading from the Dhammapada in Radcliffe Square.

## Supporting Prajnaketu

In February 2022 OT began to financially support Prajnaketu for the equivalent of one day per week, to oversee the administrative aspects of running OT's activities. This has continued into 2024. His work has involved resourcing management team meetings, planning themes for our events, liaising with venues, producing publicity, and responding to communications on behalf of the Charity.



## Financial Review

Oxford Triratna has no fund restrictions placed on its income and expenditure. Unrestricted income for the year was £12,370 and expenditure £14,660. This resulted in a deficit of £2,290, slightly less than expected from mid-year projections.

Total receipts on unrestricted funds were £12,370 (2023 - £11,601). OT has a policy of not charging a fee for most of its activities. Sangha Nights, Day Retreats, Mitra Study, and Introductory Courses all operated on this basis. This is in keeping with the traditional practice of offering the Dharma freely. At (£4,528) donations from these activities were slightly lower, about 10%, than in 2023 (£4,889). Regular Giving was, in contrast, 21% higher than the previous year (£3,722 compared to £3,067). This reflects conscious and concerted effort to encourage regular attendees to classes to give in this form, which tends to be much more a reliable source of income. Weekend Retreat income was lower in 2024 (£2,561) than 2023 (£3,396). This was due to the fact that only two bespoke Oxford Triratna weekends were held, rather than 2023's three.

In 2024, total expenditure on unrestricted funds was £14,660 and very much as projected. In 2023 Prajnaketu completed his second full year as a part-time, one day per week employee of the Charity. Cost of living increases, with inflation relatively high throughout the year, saw salaries (this includes pension costs) rise from £3,999 to £4,602. Rent increased considerably, from £2,203 to £4,500. This was due in part to the hire of a new venue on one Sunday per month to run study groups, an important development but with impacts upon costs. It can also be explained by the fact that, as the Charity's accounts operate on a cash basis, payments made in February and March, that largely cover the accounting year 2025, were included in 2024. Weekend Retreat expenditure increased on 2023 (£3,010) as although the number of retreats held decreased, costs increased. Adhithana increased their rates, the number of team members expanded, and one of the retreats was 5 nights in duration (the norm is 2).

The Board are very aware that although planned, and although several years of surplus have put its operations on a sustainable footing, deficits are not sustainable. There is a backdated Gift Aid claim that will impact upon this, however the Board will need to develop its fundraising strategy to see year-on-year income boosted. With increasing demand for activities and with inflation-linked expenditure pressures, the environment is challenging. Adding bank and deposit balances brought forward at the beginning of the year, the balance carried forward at the 5<sup>th</sup> April on unrestricted funds totalled £20,586. This represents 18 months of the budgeted expenditure for 2025.

## Reserves Policy

It is OT policy to maintain a balance on unrestricted funds which equates to three to six months of expected unrestricted payments, equivalent to £3,431 to £6,862. The balance of £20,586 held on unrestricted funds easily matches this.

It is our policy not to invest in stock market funds at the current time. The Board are considering investments in Charity Deposit accounts, as income and expenditure over the past 5 years indicates that maintaining cash flow is not a significant issue.



## Volunteers

We would like to thank all the volunteers who worked so hard to make our sangha the committed and vibrant community it is, especially those who have supported our in-person teams and made possible the hybrid activities that have seen us through the first period of post-pandemic life.

## Structure, Governance and Management

The method of appointment is set out in the OT Constitution. The Board of Trustees consists of Triratna Buddhist Order Members who are members of the Charity. All Order Members in the local area are encouraged to register as a member of the Charity and stand for election to the OT Board.

The OT Board are responsible for making decisions on all matters of general concern and importance to the Charity, including deciding on how the funds of OT are spent.

The full OT Board met on 4 occasions during the year. Given the wide responsibilities the OT Board has a committee that held a business meeting on a six-weekly basis. Three of the current Board attend this meeting. It covers matters of publicity and finance, programming of events, inter-Triratna matters, safeguarding and pastoral care, Mitra and Ordination requests.

### Elected Members

Timothy Holden (Prajñāketu) – Chair  
Robert Hubbard (Sthiradeva) – Secretary  
Guy Potter (Padmakumāra) – Treasurer  
Matthew New (Sangharuchi)  
Ben Linsey-Bloom (Vilāsamuni)

### Members

Timothy Holden (Prajñāketu)  
Robert Hubbard (Sthiradeva)  
Guy Potter (Padmakumāra)  
Matthew New (Sangharuchi)  
Ben Linsey-Bloom (Vilāsamuni)

	Charity Name			R
	Oxford Triratna			1
	<b>Receipts and payments ac</b>			
#VALUE!	For the period from	4/6/2023	To	

## Section A: Receipts and payments

	Unrestricted funds	Restricted funds	Endowment funds
	to the nearest £	to the nearest £	to the nearest £

### A1 Receipts

Bookshop	410	-	-
Classes & Events	4,528	-	-
One-off Giving	797	-	-
Other Income	352	-	-
Regular Giving	3,722	-	-
Weekend Retreats	2,561	-	-
<b>Sub total</b> (Gross income for AR)	12,370	-	-

### A2 Asset and investment sales, (see table).

	-	-	-
	-	-	-
<b>Sub total</b>	-	-	-

### Total receipts

12,370	-	-
--------	---	---

### A3 Payments

Bookshop	420		
Classes & Events	27	-	-
Equipment	781	-	-
Governance	215	-	-
Operating Costs	500	-	-
Publicity	215	-	-
Rent	4,500	-	-
Sangha Nights - Classes & Events		-	-
Salaries	4,602		
Weekend Retreats	3,400	-	-
<b>Sub total</b>	14,660	-	-

### A4 Asset and investment

	-	-	-
	-	-	-

<b>Sub total</b>	-	-	-
<b>Total payments</b>	14,660	-	-
<b>Net of receipts/(payments)</b>	- 2,290	-	-
<b>A5 Transfers between funds</b>	-	-	-
<b>A6 Cash funds last year end</b>	22,876	-	-
<b>Cash funds this year end</b>	20,586	-	-

## Section B Statement of assets and liabilities at the end of the financial year

Categories	Details	Unrestricted funds to nearest £
<b>B1 Cash funds</b>	Co-op Current Account	20,586
		-
		-
	<b>Total cash funds</b>	20,586
	(agree balances with receipts and payments account(s))	OK

Categories	Details	Unrestricted funds to nearest £
<b>B2 Other monetary assets</b>		
		-
		-
		-

Categories	Details	Fund to which asset belongs
<b>B3 Investment assets</b>		

Categories	Details	Fund to which asset belongs
<b>B4 Assets retained for the charity's own use</b>		


**B5 Liabilities**

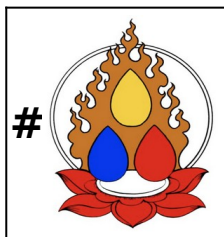
Details	Fund to which liability relates

Signed by one or two trustees on behalf of all the trustees

Signature	Print Name
	Padmakumara
	Prajnaketu - Tirumala



Registration 183192
Accounts
4/5/2024



<b>Total funds</b>	<b>Last year</b>
<b>to the nearest £</b>	<b>to the nearest £</b>

410	
4,528	4,890
797	248
352	-
3,722	3,067
2,561	3,396
12,370	11,601

-	-
-	-
-	-

12,370	11,601
--------	--------

420	270
27	-
781	207
215	120
500	405
215	291
4,500	2,203
-	63
4,602	3,999
3,400	3,010
14,660	10,568

-	-
-	-

## Income

Classes & Events

Bookshop

One-off Giving

Other Income

Regular Giving

Weekend Retreats

Total Income

## Expenditure

Bookshop

Classes & Events

Equipment

Fundraising

Governance

Operating Costs

Publicity

Rent

Salaries

Weekend Retreats

**Total Expenditure**

**Net Income/Expenditure**

**Opening Balance**

**Closing Balance**

**Net**

**Reconciliation Discrepancy**

Discrepancy coded to Operating Cost

-	-
---	---

14,660	10,568
-	
- 2,290	1,033
-	-
22,876	22,553
20,586	23,586

End of the period

Restricted funds to nearest £	Endowment funds to nearest £
-	-
-	-
-	-
-	-
OK	OK

Restricted funds to nearest £	Endowment funds to nearest £
-	-
-	-
-	-
-	-
-	-

Cost (optional)	Current value (optional)
-	-
-	-
-	-
-	-
-	-

Cost (optional)	Current value (optional)
-	-

-	-
-	-
-	-
-	-
-	-
-	-
-	-

Amount due (optional)	When due (optional)
-	
-	

Name	Date of approval
3 - Guy Potter	
mothy Holden	

	Annual Account Coding
4528.39	Donations
409.95	Charitable Activity
797.07	Donations
351.8	Donations
3721.5	Donations
2561.13	Donations
12369.84	
419.66	Charitable Activity
27	Charitable Activity
780.73	Charitable Activity
0	Raising Funds
215	Charitable Activity
500.41	0.92 to cover discrepancyCharitable Activity
215.29	Charitable Activity
4500	Charitable Activity
4602.22	Charitable Activity
3400	Charitable Activity
14660.31	
-2290.47	0
22876.64	
20586.17	
2290.47	
0.92	

#VALUE!	Charity Name Oxford Triratna			Registration Number 1183192	#VALUE!
	Receipts and payments accounts				
	For the period from	4/6/2022	To	4/5/2023	

## Section A: Receipts and payments

	Unrestricted funds to the nearest £	Restricted funds to the nearest £	Endowment funds to the nearest £	Total funds to the nearest £	Last year to the nearest £
<b>A1 Receipts</b>					
Day Retreats	335	-	-	335	20
Introductory Courses	112	-	-	112	400
One-off Giving	248	-	-	248	384
Other Income	-	-	-	-	-
Regular Giving	3,067	-	-	3,067	3,114
Sangha Nights	4,443	-	-	4,443	1,745
Weekend Retreats	3,396	-	-	3,396	1,480
<b>Sub total</b> (Gross income for AR)	11,601	-	-	11,601	7,143
<b>A2 Asset and investment sales, (see table).</b>					
	-	-	-	-	-
	-	-	-	-	-
<b>Sub total</b>	-	-	-	-	-
<b>Total receipts</b>	11,601	-	-	11,601	7,143
<b>A3 Payments</b>					
Administration	209	-	-	209	54

Bookshop	270			270	
Day Retreats	-	-	-	-	100
Equipment	207	-	-	207	722
Governance	120	-	-	120	60
Insurance	196	-	-	196	196
Publicity	291	-	-	291	178
Rent / Lease of Buildings	2,203	-	-	2,203	3,336
Sangha Nights	63	-	-	63	-
Salaries	3,999			3,999	558
Software	-			-	356
Training	-	-	-	-	-
Weekend Retreats	3,010	-	-	3,010	1,260
<b>Sub total</b>	<b>10,568</b>	<b>-</b>	<b>-</b>	<b>10,568</b>	<b>6,820</b>

<b>A4 Asset and investment</b>					
	-	-	-	-	-
	-	-	-	-	-
<b>Sub total</b>	<b>-</b>	<b>-</b>	<b>-</b>	<b>-</b>	<b>-</b>

<b>Total payments</b>	<b>10,568</b>	<b>-</b>	<b>-</b>	<b>10,568</b>	<b>6,820</b>
<b>Net of receipts/(payments)</b>	<b>1,033</b>	<b>-</b>	<b>-</b>	<b>1,033</b>	<b>323</b>
<b>A5 Transfers between funds</b>	<b>-</b>	<b>-</b>	<b>-</b>	<b>-</b>	<b>-</b>
<b>A6 Cash funds last year end</b>	<b>21,843</b>	<b>-</b>	<b>-</b>	<b>21,843</b>	<b>21,520</b>
<b>Cash funds this year end</b>	<b>22,876</b>	<b>-</b>	<b>-</b>	<b>22,876</b>	<b>21,843</b>

## Section B Statement of assets and liabilities at the end of the period

Categories	Details	Unrestricted to nearest £	Restricted to nearest £	Endowment to nearest £
<b>B1 Cash funds</b>	Co-op Current Account	22,876	-	-

	-	-	-
	-	-	-
<b>Total cash funds</b>	<b>22,876</b>	<b>-</b>	<b>-</b>
(agree balances with receipts and payments account(s))	OK	OK	OK

**Unrestricted  
to nearest £**

**Restricted  
to nearest £**

**Endowment  
to nearest £**

### Details

## B2 Other monetary assets

		-	-
		-	-
	-	-	-
	-	-	-
	-	-	-

### Details

**Fund to which  
asset belongs**

**Cost (optional)**

**Current value  
(optional)**

## B3 Investment assets

		-	-
		-	-
		-	-
		-	-
		-	-

### Details

**Fund to which  
asset belongs**

**Cost (optional)**

**Current value  
(optional)**

## B4 Assets retained for the charity's own use

		-	-
		-	-
		-	-


		-	-
		-	-
		-	-
		-	-
		-	-

## B5 Liabilities

Details	Fund to which	Amount due	When due
		-	
		-	

Signed by one or two trustees on behalf of all the trustees

Signature	Print Name	Date of approval
	Padmakumara - Guy Potter	
	Prajnaketu - Timothy Holden	



Report-20200606112741

**Customer:** OXFORD TRIRATNA(B87OCS)  
**Account:** 0892996560174500-OXFORD TRIRATNA  
**Date Range:** From : 06/04/2020

## Transactions

Date	Description	Withdrawals	Deposits
<b>St 104 - 6th April</b>			
6-Apr-23	Rosemary Perkins ROSE PERKINS		£ 30.00
		£ -	£ 30.00
<b>St 107 5th May</b>			
6-Apr-23	BROUGHT FORWARD		
14-Apr-23	FOREIGN PAYT RECD BUDDHALAINEN YHTEI		£ 138.77
17-Apr-23	MS CATHERINE OXFORD TRIRATNA		£ 5.00
17-Apr-23	Ben Linsey-Bloom Vilasamuni		£ 10.00
24-Apr-23	MS CATHERINE WOMEN'S DAY DANA		£ 90.00
28-Apr-23	TIMOTHY HOLDEN SALARY APRIL	£ 330.63	
2-May-23	Wilson Lesley SANGHA		£ 10.00
2-May-23	FLORA BOTSFORD Dana		£ 10.00
2-May-23	GREETJE CORPORAAL Monthly donation		£ 10.00
2-May-23	Philippa Masters PIPPA MASTERS DANA		£ 20.00
2-May-23	H BARRETT FROM HELEN BARRETT		£ 20.00
2-May-23	MR HOLDEN THOLDENDANA		£ 20.00
2-May-23	GREEN JM+AM M GREEN DANA		£ 25.00
2-May-23	Hubbard Robert R HUBBARD DANA		£ 25.00
2-May-23	DR VICTORIA MARSH VMARSHDANA		£ 45.00
2-May-23	Stripe Payments UK STRIPE - £613.48		
			£ 300.00

			£ 330.00
	Stripe Charges	£ 16.52	
3-May-23	5390 CCC GBP 95.15	£ 2.61	
3-May-23	5390 MEETUP ORG SU	£ 95.15	
3-May-23	Michael Buick sangha nights		£ 20.00
5-May-23	DD NEST IT000007408073	£ 49.57	
		£ 494.48	£ 1,078.77
<b>St 108 7th June</b>			
5-May-23	BROUGHT FORWARD		
9-May-23	Rosemary Perkins ROSE PERKINS		£ 30.00
10-May-23	Scottish Book Sour Inv 22232072	£ 224.81	
12-May-23	ADHISTHANA # 1605	£ 975.00	
15-May-23	MS CATHERINE OXFORD TRIRATNA		£ 5.00
15-May-23	H Barrett FROM HELEN BARRETT		£ 10.00
16-May-23	Ben Linsey-Bloom Vilasamuni		£ 10.00
22-May-23	THE FELLOWSHIP OF INV0216 day retrea	£ 350.00	
26-May-23	TIMOTHY HOLDEN Net Salary May	£ 293.83	
31-May-23	Stripe Payments UK STRIPE - £352.65		
			£ 215.63
			£ 150.00
	Stripe Fees	£ 12.08	
1-Jun-23	FLORA BOTSFORD Dana		£ 10.00
1-Jun-23	Philippa Masters PIPPA MASTERS DANA		£ 20.00
1-Jun-23	H BARRETT FROM HELEN BARRETT		£ 20.00
1-Jun-23	MR HOLDEN THOLDENDANA		£ 20.00
1-Jun-23	GREEN JM+AM M GREEN DANA		£ 25.00
1-Jun-23	DR VICTORIA MARSH VMARSHDANA		£ 45.00
2-Jun-23	Wilson Lesley SANGHA		£ 10.00
2-Jun-23	Hubbard Robert R HUBBARD DANA		£ 25.00
5-Jun-23	Scottish Book Sour ACC 311582	£ 194.85	

5-Jun-23	Michael Buick sangha nights		£ 20.00
6-Jun-23	Rosemary Perkins ROSE PERKINS		£ 30.00
		£ 2,050.57	£ 645.63
<b>St 109 7th July</b>			
7-Jun-23	BROUGHT FORWARD		
8-Jun-23	DD NEST IT000007408073	£ 16.53	
15-Jun-23	TRIRATNA GLASGOW Books Prajnaketu		£ 95.92
15-Jun-23	MS CATHERINE OXFORD TRIRATNA		£ 5.00
16-Jun-23	Ben Linsey-Bloom Vilasamuni		£ 10.00
27-Jun-23	JESSICA PAILTHORPE Womens day 17/6/23	£ 27.00	
28-Jun-23	TIMOTHY HOLDEN Salary June 2023	£ 293.83	
30-Jun-23	Stripe Payments UK STRIPE - £400.51		
			£ 77.94
			£ 212.34
			£ 125.00
	Stripe Fees	£ 14.77	
3-Jul-23	Wilson Lesley SANGHA		£ 10.00
3-Jul-23	FLORA BOTSFORD Dana		£ 10.00
3-Jul-23	H BARRETT FROM HELEN BARRETT		£ 20.00
3-Jul-23	Philippa Masters PIPPA MASTERS DANA		£ 20.00
3-Jul-23	Michael Buick sangha nights		£ 20.00
3-Jul-23	MR HOLDEN THOLDENDANA		£ 20.00
3-Jul-23	Hubbard Robert R HUBBARD DANA		£ 25.00
3-Jul-23	GREEN JM+AM M GREEN DANA		£ 25.00
3-Jul-23	DR VICTORIA MARSH VMARSHDANA		£ 45.00
6-Jul-23	Rosemary Perkins ROSE PERKINS		£ 30.00
		£ 352.13	£ 751.20
<b>St 108 7th August</b>			

7-Jul-23	BROUGHT FORWARD		
17-Jul-23	THE FELLOWSHIP OF 0200 Address Hire	£ 100.00	
17-Jul-23	Wellbeing Ventures Triratna Autumn	£ 300.00	
17-Jul-23	THE FELLOWSHIP OF 0226 Room Hire	£ 780.00	
17-Jul-23	MS CATHERINE OXFORD TRIRATNA		£ 5.00
17-Jul-23	Ben Linsey-Bloom Vilasamuni		£ 10.00
18-Jul-23	MR HOLDEN HMRC REBATE		£ 351.80
20-Jul-23	DD NEST IT000007408073	£ 16.53	
20-Jul-23	THE FELLOWSHIP OF 0237	£ 200.00	
28-Jul-23	TIMOTHY HOLDEN JULY SALARY	£ 323.03	
31-Jul-23	Stripe Payments UK STRIPE - 216.81		
		£ 8.19	
			£ 20.00
			£ 205.00
1-Aug-23	FLORA BOTSFORD Dana		£ 10.00
1-Aug-23	Philippa Masters PIPPA MASTERS DANA		£ 20.00
1-Aug-23	MR HOLDEN THOLDENDANA		£ 20.00
1-Aug-23	GREEN JM+AM M GREEN DANA		£ 25.00
1-Aug-23	DR VICTORIA MARSH VMARSHDANA		£ 45.00
2-Aug-23	Wilson Lesley SANGHA		£ 10.00
2-Aug-23	Hubbard Robert R HUBBARD DANA		£ 25.00
7-Aug-23	Rosemary Perkins ROSE PERKINS		£ 30.00
		£ 1,727.75	£ 776.80
<b>St 109 9th September 2023</b>			
7-Aug-23	BROUGHT FORWARD		
10-Aug-23	DD NEST IT000007408073	£ 16.53	
15-Aug-23	MS CATHERINE OXFORD TRIRATNA		£ 5.00
16-Aug-23	Ben Linsey-Bloom Vilasamuni		£ 10.00
22-Aug-23	THE FELLOWSHIP OF 0245	£ 100.00	

22-Aug-23	THE FELLOWSHIP OF 0238	£ 120.00	
22-Aug-23	THE FELLOWSHIP OF 0244	£ 780.00	
22-Aug-23	G R POTTER HMRC refund	£ 525.06	
31-Aug-23	Stripe Payments UK STRIPE - 428.18		
		£ 16.11	
			£ 210.31
			£ 234.00
1-Sep-23	TIMOTHY HOLDEN Salary August 2023	£ 323.03	
1-Sep-23	FLORA BOTSFORD Dana		£ 10.00
1-Sep-23	Philippa Masters PIPPA MASTERS DANA		£ 20.00
1-Sep-23	MR HOLDEN THOLDENDANA		£ 20.00
1-Sep-23	GREEN JM+AM M GREEN DANA		£ 25.00
1-Sep-23	DR VICTORIA MARSH VMARSHDANA		£ 45.00
4-Sep-23	Wilson Lesley SANGHA		£ 10.00
4-Sep-23	Hubbard Robert R HUBBARD DANA		£ 25.00
6-Sep-23	DD NEST IT000007408073	£ 16.53	
6-Sep-23	Rosemary Perkins ROSE PERKINS		£ 30.00
		£ 1,897.26	£ 644.31
<b>St 110 6th October 2023</b>			
7-Sep-23	BROUGHT FORWARD		
13-Sep-23	Michael Buick SanghaNight		£ 10.00
14-Sep-23	ARTHUR GALLAGHER I 38825454	£ 196.00	
15-Sep-23	MS CATHERINE OXFORD TRIRATNA		£ 5.00
18-Sep-23	Ben Linsey-Bloom Vilasamuni		£ 10.00
25-Sep-23	Pascual Daniel DANNI DANA		£ 25.00
29-Sep-23	TIMOTHY HOLDEN Sept Salary	£ 277.33	
2-Oct-23	MS FLORA FIDELIA R DANA		£ 10.00
2-Oct-23	Wilson Lesley SANGHA		£ 10.00
2-Oct-23	Philippa Masters PIPPA MASTERS DANA		£ 20.00
2-Oct-23	MR HOLDEN THOLDENDANA		£ 20.00
2-Oct-23	GREEN JM+AM M GREEN DANA		£ 25.00

2-Oct-23	Hubbard Robert R HUBBARD DANA		£ 25.00
2-Oct-23	LICHTINGER S SIMON L DANA		£ 30.00
2-Oct-23	DR VICTORIA MARSH VMARSHDANA		£ 45.00
2-Oct-23	Jenifer Anne Zelig JENIFER ANNE ZELIG		£ 50.00
2-Oct-23	Stripe Payments UK STRIPE - £862.77		
		£ 29.22	
			£ 70.00
			£ 406.99
			£ 415.00
3-Oct-23	Michael Buick SanghaNight		£ 10.00
3-Oct-23	G WHITEHOUSE DONATION		£ 15.00
6-Oct-23	Rosemary Perkins ROSE PERKINS		£ 30.00
		£ 502.55	£ 1,231.99
<b>31st 11th / 1st November</b>			
6-Oct-23	BROUGHT FORWARD		
16-Oct-23	MS CATHERINE OXFORD TRIRATNA		£ 5.00
16-Oct-23	Ben Linsey-Bloom Vilasamuni		£ 10.00
18-Oct-23	MR HOLDEN BOOK SALES AMS'DAM		£ 49.36
20-Oct-23	Wellbeing Ventures Triratna Study AMs	£ 450.00	
24-Oct-23	DD NEST IT000007408073	£ 16.53	
25-Oct-23	DD HMRC SDDS 0000307575	£ 73.60	
25-Oct-23	Pascual Daniel DANNI DANA		£ 25.00
27-Oct-23	TIMOTHY HOLDEN October salary	£ 293.83	
31-Oct-23	Stripe Payments UK STRIPE - 1,017.81		
		£ 28.20	
			£ 58.01
			£ 273.00
			£ 690.00
			£ 25.00
1-Nov-23	Philippa Masters PIPPA MASTERS DANA		£ 20.00
1-Nov-23	FLORA BOTSFORD Dana		£ 20.00

1-Nov-23	MR HOLDEN THOLDENDANA		£ 20.00
1-Nov-23	GREEN JM+AM M GREEN DANA		£ 25.00
1-Nov-23	LICHTINGER S SIMON L DANA		£ 30.00
1-Nov-23	DR VICTORIA MARSH VMARSHDANA		£ 45.00
2-Nov-23	5390 CCC GBP 98.18	£ 2.69	
2-Nov-23	5390 MEETUP ORG SU	£ 98.18	
2-Nov-23	Wilson Lesley SANGHA		£ 10.00
2-Nov-23	Hubbard Robert R HUBBARD DANA		£ 25.00
3-Nov-23	G WHITEHOUSE DONATION		£ 15.00
6-Nov-23	Rosemary Perkins ROSE PERKINS		£ 30.00
7-Nov-23	THOMPSON JM JMT donation		£ 10.00
		£ 963.03	£ 1,385.37
<b>St 112 7th December</b>			
7-Nov-23	BROUGHT FORWARD		
8-Nov-23	OLIVER L DONATION		£ 15.00
13-Nov-23	DAVID MILLER T/A B Buddhist Images	£ 115.00	
13-Nov-23	Sassirika Ceramics Bhante bowls	£ 600.00	
15-Nov-23	MS CATHERINE OXFORD TRIRATNA		£ 5.00
16-Nov-23	Ben Linsey-Bloom Vilasamuni		£ 10.00
21-Nov-23	J LOMAX OXFORD TRIRATNA		£ 6.50
22-Nov-23	DD NEST IT000007408073	£ 16.53	
24-Nov-23	DD NEST IT000007408073	£ 16.53	
27-Nov-23	Pascual Daniel DANNI DANA		£ 25.00
28-Nov-23	J LOMAX OXFORD TRIRATNA		£ 6.50
30-Nov-23	TIMOTHY HOLDEN November Salary	£ 280.70	
30-Nov-23	Stripe Payments UK STRIPE £906.26		
		£ 25.99	
			£ 172.50
			£ 323.75
			£ 251.00

			£ 180.00
			£ 5.00
1-Dec-23	FLORA BOTSFORD Dana		£ 20.00
1-Dec-23	Philippa Masters PIPPA MASTERS DANA		£ 20.00
1-Dec-23	MR HOLDEN THOLDENDANA		£ 20.00
1-Dec-23	GREEN JM+AM M GREEN DANA		£ 25.00
1-Dec-23	LICHTINGER S SIMON L DANA		£ 30.00
1-Dec-23	DR VICTORIA MARSH VMARSHDANA		£ 45.00
4-Dec-23	Wilson Lesley SANGHA		£ 10.00
4-Dec-23	G WHITEHOUSE DONATION		£ 15.00
4-Dec-23	Hubbard Robert R HUBBARD DANA		£ 25.00
4-Dec-23	Jenifer Anne Zelig JENIFER ANNE ZELIG		£ 50.00
5-Dec-23	J LOMAX OXFORD TRIRATNA		£ 6.50
6-Dec-23	Potter Guy SANGHA NIGHT 06-21		£ 25.00
6-Dec-23	Rosemary Perkins ROSE PERKINS		£ 30.00
		£ 1,054.75	£ 1,321.75
<b>St 115 5th January 2023</b>			
6-Dec-23	BROUGHT FORWARD		
8-Dec-23	OLIVER L DONATION		£ 15.00
12-Dec-23	J LOMAX OXFORD TRIRATNA		£ 6.50
12-Dec-23	Michael Buick SanghaNight		£ 10.00
13-Dec-23	THE FELLOWSHIP OF Invoice 0275	£ 480.00	
15-Dec-23	MS CATHERINE OXFORD TRIRATNA		£ 5.00
18-Dec-23	Ben Linsey-Bloom Vilasamuni		£ 10.00
18-Dec-23	Michael Buick RETREAT 2ndprt		£ 32.50
19-Dec-23	J LOMAX OXFORD TRIRATNA		£ 6.50
27-Dec-23	DD NEST IT000007408073	£ 16.53	
27-Dec-23	J LOMAX OXFORD TRIRATNA		£ 6.50
27-Dec-23	Pascual Daniel DANNI DANA		£ 25.00

28-Dec-23	TIMOTHY HOLDEN Salary December	£ 280.50	
2-Jan-24	J LOMAX OXFORD TRIRATNA		£ 6.50
2-Jan-24	Wilson Lesley SANGHA		£ 10.00
2-Jan-24	Philippa Masters PIPPA MASTERS DANA		£ 20.00
2-Jan-24	FLORA BOTSFORD Dana		£ 20.00
2-Jan-24	MR HOLDEN THOLDENDANA		£ 20.00
2-Jan-24	Hubbard Robert R HUBBARD DANA		£ 25.00
2-Jan-24	GREEN JM+AM M GREEN DANA		£ 25.00
2-Jan-24	LICHTINGER S SIMON L DANA		£ 30.00
2-Jan-24	C JOHNSON CLAIR JOHNSON DANA		£ 40.00
2-Jan-24	DR VICTORIA MARSH VMARSHDANA		£ 45.00
2-Jan-24	Stripe Payments UK STRIPE - 1,271.90		
		£ 32.33	
			£ 223.60
			£ 242.00
			£ 833.63
			£ 5.00
3-Jan-24	G WHITEHOUSE DONATION		£ 15.00
		£ 809.36	£ 1,677.73
<b>St 115 2nd February</b>			
5-Jan-24	BROUGHT FORWARD		
8-Jan-24	OLIVER L DONATION		£ 15.00
8-Jan-24	Rosemary Perkins ROSE PERKINS		£ 30.00
9-Jan-24	J LOMAX OXFORD TRIRATNA		£ 6.50
15-Jan-24	MS CATHERINE OXFORD TRIRATNA		£ 5.00
16-Jan-24	J LOMAX OXFORD TRIRATNA		£ 6.50
16-Jan-24	Ben Linsey-Bloom Vilasamuni		£ 10.00
22-Jan-24	PADMAKUMARA Proton	£ 67.85	
22-Jan-24	ADHISTHANA 1782	£ 2,025.00	

23-Jan-24	J LOMAX OXFORD TRIRATNA		£ 6.50
23-Jan-24	Michael Buick SanghaNight		£ 20.00
25-Jan-24	DD HMRC SDDS 0000307575	£ 103.80	
25-Jan-24	Pascual Daniel DANNI DANA		£ 25.00
26-Jan-24	TIMOTHY HOLDEN Salary January 24	£ 277.30	
29-Jan-24	DD NEST IT000007408073	£ 16.53	
30-Jan-24	J LOMAX OXFORD TRIRATNA		£ 6.50
31-Jan-24	Stripe Payments UK STRIPE - £290.10		
	Sangha Night Donations		£ 251.00
	Single donations		£ 50.00
	Stripe Fees	£ 10.90	
1-Feb-24	5390 eBay O*21-111	£ 24.85	
1-Feb-24	Philippa Masters PIPPA MASTERS DANA		£ 20.00
1-Feb-24	FLORA BOTSFORD Dana		£ 20.00
1-Feb-24	MR HOLDEN THOLDENDANA		£ 20.00
1-Feb-24	GREEN JM+AM M GREEN DANA		£ 25.00
1-Feb-24	LICHTINGER S SIMON L DANA		£ 30.00
1-Feb-24	C JOHNSON CLAIR JOHNSON DANA		£ 40.00
1-Feb-24	PROFESSOR & DOCTOR VMARSHDANA		£ 45.00
2-Feb-24	5390 PRINTPOND.CO.	£ 16.66	
		£ 2,542.89	£ 632.00
<b>St 116 1st March 2024</b>			
2-Feb-24	BROUGHT FORWARD		
2-Feb-24	Wilson Lesley SANGHA		£ 10.00
2-Feb-24	Hubbard Robert R HUBBARD DANA		£ 25.00
5-Feb-24	G WHITEHOUSE DONATION		£ 15.00
6-Feb-24	J LOMAX OXFORD TRIRATNA		£ 6.50
6-Feb-24	Rosemary Perkins ROSE PERKINS		£ 30.00

8-Feb-24	ADHISTHANA 1835	£ 400.00	
8-Feb-24	OLIVER L DONATION		£ 15.00
9-Feb-24	5390 eBay O*21-111		£ 21.50
13-Feb-24	J LOMAX OXFORD TRIRATNA		£ 6.50
15-Feb-24	MS CATHERINE OXFORD TRIRATNA		£ 5.00
16-Feb-24	Ben Linsey-Bloom Vilasamuni		£ 10.00
20-Feb-24	J LOMAX OXFORD TRIRATNA		£ 6.50
21-Feb-24	FLORA BOTSFORD Adhisthana Dec		£ 80.00
22-Feb-24	THE FELLOWSHIP OF 0298	£ 550.00	
26-Feb-24	Pascual Daniel DANNI DANA		£ 25.00
27-Feb-24	J LOMAX OXFORD TRIRATNA		£ 6.50
28-Feb-24	TIMOTHY HOLDEN Salary February 24	£ 277.30	
29-Feb-24	DD NEST IT000007408073	£ 16.53	
29-Feb-24	Stripe Payments UK STRIPE - £381.22		
			£ 15.00
			£ 380.98
	Stripe Fees	£ 14.76	
1-Mar-24	Philippa Masters PIPPA MASTERS DANA		£ 20.00
1-Mar-24	FLORA BOTSFORD Dana		£ 20.00
1-Mar-24	MR HOLDEN THOLDENDANA		£ 20.00
1-Mar-24	GREEN JM+AM M GREEN DANA		£ 25.00
1-Mar-24	LICHTINGER S SIMON L DANA		£ 30.00
1-Mar-24	C JOHNSON CLAIR JOHNSON DANA		£ 40.00
		£ 1,258.59	£ 813.48
<b>St 117 2nd April 2024</b>			
1-Mar-24	BROUGHT FORWARD		
1-Mar-24	PROFESSOR & DOCTOR VMARSHDANA		£ 45.00
4-Mar-24	Wilson Lesley SANGHA		£ 10.00
4-Mar-24	G WHITEHOUSE DONATION		£ 15.00

4-Mar-24	Hubbard Robert R HUBBARD DANA		£	25.00
5-Mar-24	J LOMAX OXFORD TRIRATNA		£	6.50
6-Mar-24	Rosemary Perkins ROSE PERKINS		£	30.00
8-Mar-24	OLIVER L DONATION		£	15.00
12-Mar-24	J LOMAX OXFORD TRIRATNA		£	6.50
12-Mar-24	Michael Buick SanghaNight		£	10.00
15-Mar-24	MS CATHERINE OXFORD TRIRATNA		£	5.00
18-Mar-24	THE FELLOWSHIP OF 0308	£	390.00	
18-Mar-24	Ben Linsey-Bloom Vilasamuni		£	10.00
19-Mar-24	J LOMAX OXFORD TRIRATNA		£	6.50
19-Mar-24	Michael Buick SanghaNight		£	20.00
22-Mar-24	5390 ZOOM.US 888-7	£	155.88	
25-Mar-24	Pascual Daniel DANNI DANA		£	25.00
26-Mar-24	J LOMAX OXFORD TRIRATNA		£	6.50
26-Mar-24	Rosa Henderson Dana		£	10.00
26-Mar-24	Michael Buick SanghaNight		£	20.00
28-Mar-24	TIMOTHY HOLDEN March Salary	£	408.32	
2-Apr-24	J LOMAX OXFORD TRIRATNA		£	6.50
2-Apr-24	Wilson Lesley SANGHA		£	10.00
2-Apr-24	Philippa Masters PIPPA MASTERS DANA		£	20.00
2-Apr-24	MR HOLDEN THOLDENDANA		£	20.00
2-Apr-24	MS FLORA FIDELIA R DANA		£	20.00
		954.2		342.5
St 118 5th April 2024				
2-Apr-24	BROUGHT FORWARD			
2-Apr-24	GREEN JM+AM M GREEN DANA		£	25.00
2-Apr-24	Hubbard Robert R HUBBARD DANA		£	25.00
2-Apr-24	LICHTINGER S SIMON L DANA		£	30.00
2-Apr-24	C JOHNSON CLAIR JOHNSON DANA		£	40.00

2-Apr-24	PROFESSOR & DOCTOR VMARSHDANA		£ 45.00
2-Apr-24	PEARCE E H DANA		£ 50.00
2-Apr-24	Stripe Payments UK STRIPE - £781.74		£ 384.15
			£ 47.96
			£ 370.00
	Young Buddhists		£ 6.20
	Stripe Charges	£ 26.57	
3-Apr-24	G WHITEHOUSE DONATION		£ 15.00
4-Apr-24	DD NEST IT000007408073	£ 25.26	
		51.83	1038.31
	Totals of Y and X in 2023-24	£ 14,659.39	£12,369.84
	Net Y(X) from transaction list	£ (2,289.55)	
	Net Y(X) from bank statements	£ 2,290.47	
	Bank Statement-transactions discrepancy	£ 0.92	

# Reconciled

Opening Balance

Oxford Triratna Codi	Oxford Triratna Running Balance	Coop Statement Balance	
	£ 22,876.64		<b>Income</b>
			Classes & Events
			Bookshop
Regular Giving	£ 22,906.64		One-off Giving
			Other Income
			Regular Giving
	£ 22,906.64		Weekend Retreats
Bookshop	£ 23,045.41		<b>Total Income</b>
Regular Giving	£ 23,050.41		
Regular Giving	£ 23,060.41		<b>Expenditure</b>
Classes & Events	£ 23,150.41		Bookshop
Salaries	£ 22,819.78		Classes & Events
Regular Giving	£ 22,829.78		Equipment
Regular Giving	£ 22,839.78		Fundraising
Regular Giving	£ 22,849.78		Governance
Regular Giving	£ 22,869.78		Operating Costs
Regular Giving	£ 22,889.78		Publicity
Regular Giving	£ 22,909.78		Rent
Regular Giving	£ 22,934.78		Salaries
Regular Giving	£ 22,959.78		Weekend Retreats
Regular Giving	£ 23,004.78		<b>Total Expenditure</b>
	£ 23,004.78		
Classes & Events	£ 23,304.78		<b>Income/Expenditure</b>

Weekend Retreats	£	23,634.78			
Operating Costs	£	23,618.26			
Publicity	£	23,615.65			<b>Accruals - Debtors</b>
Publicity	£	23,520.50			
Regular Giving	£	23,540.50			<b>Total Debtors</b>
Salaries	£	23,490.93			
					<b>Accruals - Creditors</b>
	£	23,490.03			
Regular Giving	£	23,520.03			<b>Total Creditors</b>
Bookshop	£	23,295.22			Account reporting is on a
Weekend Retreats	£	22,320.22			
Regular Giving	£	22,325.22			
Regular Giving	£	22,335.22			
Regular Giving	£	22,345.22			
Rent	£	21,995.22			
Salaries	£	21,701.39			
	£	21,701.39			
Classes & Events	£	21,917.02			
Classes & Events	£	22,067.02			
Operating Costs	£	22,054.94			
Regular Giving	£	22,064.94			
Regular Giving	£	22,084.94			
Regular Giving	£	22,104.94			
Regular Giving	£	22,124.94			
Regular Giving	£	22,149.94			
Regular Giving	£	22,194.94			
Regular Giving	£	22,204.94			
Regular Giving	£	22,229.94			
Bookshop	£	22,035.09			

Regular Giving	£	22,055.09		
Regular Giving	£	22,085.09		
	£	22,085.09		
Salaries	£	22,068.56		
Bookshop	£	22,164.48		
Regular Giving	£	22,169.48		
Regular Giving	£	22,179.48		
Classes & Events	£	22,152.48		
Salaries	£	21,858.65		
	£	21,858.65		
Bookshop	£	21,936.59		
Classes & Events	£	22,148.93		
Classes & Events	£	22,273.93		
Operating Costs	£	22,259.16		
Regular Giving	£	22,269.16		
Regular Giving	£	22,279.16		
Regular Giving	£	22,299.16		
Regular Giving	£	22,319.16		
Regular Giving	£	22,339.16		
Regular Giving	£	22,359.16		
Regular Giving	£	22,384.16		
Regular Giving	£	22,409.16		
Regular Giving	£	22,454.16		
Regular Giving	£	22,484.16		

	£	22,484.16		
Governance	£	22,384.16		
Rent	£	22,084.16		
Rent	£	21,304.16		
Regular Giving	£	21,309.16		
Regular Giving	£	21,319.16		
Other Income	£	21,670.96		
Salaries	£	21,654.43		
Rent	£	21,454.43		
Salaries	£	21,131.40		
	£	21,131.40		
Operating Costs	£	21,123.21		
One-off Giving	£	21,143.21		
Classes & Events	£	21,348.21		
Regular Giving	£	21,358.21		
Regular Giving	£	21,378.21		
Regular Giving	£	21,398.21		
Regular Giving	£	21,423.21		
Regular Giving	£	21,468.21		
Regular Giving	£	21,478.21		
Regular Giving	£	21,503.21		
Regular Giving	£	21,533.21		
	£	21,533.21		
Salaries	£	21,516.68		
Regular Giving	£	21,521.68		
Regular Giving	£	21,531.68		
Rent	£	21,431.68		

Rent	£	21,311.68		
Rent	£	20,531.68		
Salaries	£	20,006.62		
	£	20,006.62		
Operating Costs	£	19,990.51		
One-off Giving	£	20,200.82		
Classes & Events	£	20,434.82		
Salaries	£	20,111.79		
Regular Giving	£	20,121.79		
Regular Giving	£	20,141.79		
Regular Giving	£	20,161.79		
Regular Giving	£	20,186.79		
Regular Giving	£	20,231.79		
Regular Giving	£	20,241.79		
Regular Giving	£	20,266.79		
Salaries	£	20,250.26		
Regular Giving	£	20,280.26		
	£	20,280.24		
Regular Giving	£	20,290.24		
Operating Costs	£	20,094.24		
Regular Giving	£	20,099.24		
Regular Giving	£	20,109.24		
Regular Giving	£	20,134.24		
Salaries	£	19,856.91		
Regular Giving	£	19,866.91		
Regular Giving	£	19,876.91		
Regular Giving	£	19,896.91		
Regular Giving	£	19,916.91		
Regular Giving	£	19,941.91		

Regular Giving	£	19,966.91		
Regular Giving	£	19,996.91		
Regular Giving	£	20,041.91		
Regular Giving	£	20,091.91		
	£	20,091.91		
Operating Costs	£	20,062.69		
One-off Giving	£	20,132.69		
Classes & Events	£	20,539.68		
Weekend Retreats	£	20,954.68		
Regular Giving	£	20,964.68		
Regular Giving	£	20,979.68		
Regular Giving	£	21,009.68		
	£	21,009.68	21,009.68	
Regular Giving	£	21,014.68		
Regular Giving	£	21,024.68	21,024.68	
Bookshop	£	21,074.04	21,074.04	
Rent	£	20,624.04	20,624.04	
Salaries	£	20,607.51	20,607.51	
Salaries	£	20,533.91		
Regular Giving	£	20,558.91	20,558.91	
Salaries	£	20,265.08	20,265.08	
	£	20,265.08	21,282.89	
Operating Costs	£	20,236.88		
One-off Giving	£	20,294.89		
Classes & Events	£	20,567.89		
Weekend Retreats	£	21,257.89		
Classes & Events	£	21,282.89		
Regular Giving	£	21,302.89		
Regular Giving	£	21,322.89		

Regular Giving	£ 21,342.89			
Regular Giving	£ 21,367.89			
Regular Giving	£ 21,397.89			
Regular Giving	£ 21,442.89	21,442.89		
Publicity	£ 21,440.20			
Publicity	£ 21,342.02			
Regular Giving	£ 21,352.02			
Regular Giving	£ 21,377.02	21,377.02		
Regular Giving	£ 21,392.02	21,392.02		
Regular Giving	£ 21,422.02	21,422.02		
One-off Giving	£ 21,432.02	21,432.02		
	21,432.02	21,432.02		
Regular Giving	21,447.02	21,447.02		
Governance	21,332.02			
Equipment	20,732.02	20,732.02		
Regular Giving	20,737.02	20,737.02		
Regular Giving	20,747.02	20,747.02		
Regular Giving	20,753.52	20,753.52		
Salaries	20,736.99	20,736.99		
Salaries	20,720.46	20,720.46		
Regular Giving	20,745.46	20,745.46		
Regular Giving	20,751.96	20,751.96		
Salaries	20,471.26			
	20,471.26	21,377.52		
Operating Costs	20,445.27			
Classes & Events	20,617.77			
One-off Giving	20,941.52			
Classes & Events	21,192.52			

Weekend Retreats	21,372.52			
Classes & Events	21,377.52			
Regular Giving	21,397.52			
Regular Giving	21,417.52			
Regular Giving	21,437.52			
Regular Giving	21,462.52			
Regular Giving	21,492.52			
Regular Giving	21,537.52	21,537.52		
Regular Giving	21,547.52			
Regular Giving	21,562.52			
Regular Giving	21,587.52			
Regular Giving	21,637.52	21,637.52		
Regular Giving	21,644.02	21,644.02		
Regular Giving	21,669.02			
Regular Giving	21,699.02	21,699.02		
	21,699.02	21,699.02		
Regular Giving	21,714.02	21,714.02		
Regular Giving	21,720.52			
Regular Giving	21,730.52	21,730.52		
Rent	21,250.52	21,250.52		
Regular Giving	21,255.52	21,255.52		
Regular Giving	21,265.52			
Weekend Retreats	21,298.02	21,298.02		
Regular Giving	21,304.52	21,304.52		
Salaries	21,287.99			
Regular Giving	21,294.49			
Regular Giving	21,319.49	21,319.49		

Salaries	21,038.99	21,038.99		
Regular Giving	21,045.49			
Regular Giving	21,055.49			
Regular Giving	21,075.49			
Regular Giving	21,095.49			
Regular Giving	21,115.49			
Regular Giving	21,140.49			
Regular Giving	21,165.49			
Regular Giving	21,195.49			
Regular Giving	21,235.49			
Regular Giving	21,280.49			
	21,280.49	22,552.39		
Operating Costs	21,248.16			
Classes & Events	21,471.76			
Classes & Events	21,713.76			
Weekend Retreats	22,547.39			
Classes & Events	22,552.39			
Regular Giving	22,567.39	22,567.39		
	22,567.39			
Regular Giving	22,582.39			
Regular Giving	22,612.39			
Regular Giving	22,618.89			
Regular Giving	22,623.89			
Regular Giving	22,630.39			
Regular Giving	22,640.39			
Operating Costs	22,572.54			
Weekend Retreats	20,547.54			

Regular Giving	20,554.04			
Regular Giving	20,574.04			
Salaries	20,470.24			
Regular Giving	20,495.24			
Salaries	20,217.94			
Salaries	20,201.41			
Regular Giving	20,207.91			
	20,207.91			
Classes & Events	20,458.91			
One-off Giving	20,508.91			
Operating Costs	20,498.01			
Equipment	20,473.16	New flask for S Night		
Regular Giving	20,493.16			
Regular Giving	20,513.16			
Regular Giving	20,533.16			
Regular Giving	20,558.16			
Regular Giving	20,588.16			
Regular Giving	20,628.16			
Regular Giving	20,673.16			
Publicity	20,656.50	20,656.50S		
	20,656.50	20,656.50		
Regular Giving	20,666.50			
Regular Giving	20,691.50	20,691.50		
Regular Giving	20,706.50	20,706.50		
Regular Giving	20,713.00			
Regular Giving	20,743.00	20,743.00		

Weekend Retreats	20,343.00			
Regular Giving	20,358.00	20,358.00		
Equipment	20,379.50	20,379.50		
Regular Giving	20,386.00	20,386.00		
Regular Giving	20,391.00	20,391.00		
Regular Giving	20,401.00	20,401.00		
Regular Giving	20,407.50	20,407.50		
Weekend Retreats	20,487.50	20,487.50		
Rent	19,937.50	19,937.50		
Regular Giving	19,962.50	19,962.50		
Regular Giving	19,969.00	19,969.00		
Salaries	19,691.70	19,691.70		
Salaries	19,675.17			
	19,675.17			
One-off Giving	19,690.17			
Classes & Events	20,071.15			
Operating Costs	20,056.39	20,056.39		
Regular Giving	20,076.39			
Regular Giving	20,096.39			
Regular Giving	20,116.39			
Regular Giving	20,141.39			
Regular Giving	20,171.39			
Regular Giving	20,211.39	20,211.39S		
	£ 20,211.39	£ 20,211.39		
Regular Giving	£ 20,256.39	£ 20,256.39		
Regular Giving	£ 20,266.39			
Regular Giving	£ 20,281.39			

Regular Giving	£	20,306.39	£	20,306.39		
Regular Giving	£	20,312.89	£	20,312.89		
Regular Giving	£	20,342.89	£	20,342.89		
Regular Giving	£	20,357.89	£	20,357.89		
Regular Giving	£	20,364.39				
Regular Giving	£	20,374.39	£	20,374.39		
Regular Giving	£	20,379.39	£	20,379.39		
Rent	£	19,989.39				
Regular Giving	£	19,999.39	£	19,999.39		
Regular Giving	£	20,005.89				
Regular Giving	£	20,025.89	£	20,025.89		
Equipment	£	19,870.01	£	19,870.01		
Regular Giving	£	19,895.01	£	19,895.01		
Regular Giving	£	19,901.51				
One-off Giving	£	19,911.51				
Regular Giving	£	19,931.51	£	19,931.51		
Salaries	£	19,523.19	£	19,523.19		
Regular Giving	£	19,529.69				
Regular Giving	£	19,539.69				
Regular Giving	£	19,559.69				
Regular Giving	£	19,579.69				
Regular Giving	£	19,599.69	£	19,599.69		
	£	19,599.69	£	19,599.69		
Regular Giving	£	19,624.69				
Regular Giving	£	19,649.69				
Regular Giving	£	19,679.69				
Regular Giving	£	19,719.69				

Regular Giving	£	19,764.69	
One-off Giving	£	19,814.69	
Classes & Events	£	20,198.84	£ 20,596.43
Bookshop	£	20,246.80	
Classes & Events	£	20,616.80	
Classes & Events	£	20,623.00	
Operating Costs	£	20,596.43	
Regular Giving	£	20,611.43	£ 20,611.43
Salaries	£	20,586.17	£ 20,586.17

Code as Operating Costs

###

	<b>Annual Account Coding</b>	<b>Opening Balance</b>	<b>£ 22,876.64</b>
4,528.39	Donations	<b>Closing Balance</b>	<b>£ 20,586.17</b>
409.95	Charitable Activity		
817.07	Donations	<b>Net</b>	<b>£ 2,290.47</b>
351.80	Donations		
3,680.00	Donations		
2,561.13	Donations	<b>Reconciliation Discrepanc</b>	<b>-£ 21.50</b>
###			
		Discrepancy coded to Operating Costs	
419.66	Charitable Activity		
27.00	Charitable Activity		
780.73	Charitable Activity		
-	Raising Funds		
215.00	Charitable Activity		
500.41	0.92 to cover Charitable Activity		
215.29	Charitable Activity		
4,500.00	Charitable Activity		
4,602.22	Charitable Activity		
3,400.00	Charitable Activity		
###			
###	-		

\_\_\_\_\_  
\_\_\_\_\_  
\_\_\_\_\_

\_\_\_\_\_

\_\_\_\_\_  
receipts and payments, what's known as a cash, basis. No accruals are calculated.

\_\_\_\_\_

\_\_\_\_\_

\_\_\_\_\_

\_\_\_\_\_

**Income**

Classes & Events  
Bookshop  
One-off Giving  
Regular Giving  
Weekend Retreats

**Expenditure**

Bookshop  
Classes & Events  
Equipment  
Fundraising  
Governance  
Operating Costs  
Publicity  
Rent  
Salaries  
Weekend Retreats

## Stripe Payments Breakc

Donation Date	Payment Date	Gross	Fee	Net	Reporting Categ
	5/2/2023 1:00	20	0.5	19.5	charge
	5/2/2023 1:00	5	0.23	4.77	charge
	5/2/2023 1:00	5	0.23	4.77	charge
	5/2/2023 1:00	5	0.23	4.77	charge
	5/2/2023 1:00	5	0.23	4.77	charge
	5/2/2023 1:00	5	0.23	4.77	charge
	5/2/2023 1:00	5	0.23	4.77	charge
	5/2/2023 1:00	5	0.23	4.77	charge
	5/2/2023 1:00	5	0.23	4.77	charge
	5/2/2023 1:00	40	1.28	38.72	charge
	5/2/2023 1:00	10	0.36	9.64	charge
	5/2/2023 1:00	10	0.36	9.64	charge
	5/2/2023 1:00	15	0.49	14.51	charge
	5/2/2023 1:00	20	0.62	19.38	charge
	5/2/2023 1:00	20	0.62	19.38	charge
	5/2/2023 1:00	10	0.36	9.64	charge
	5/2/2023 1:00	10	0.36	9.64	charge
	5/2/2023 1:00	20	0.62	19.38	charge
	5/2/2023 1:00	5	0.23	4.77	charge
	5/2/2023 1:00	5	0.23	4.77	charge
	5/2/2023 1:00	5	0.23	4.77	charge
	5/2/2023 1:00	5	0.23	4.77	charge
	5/2/2023 1:00	5	0.23	4.77	charge

5/2/2023 1:00	10	0.36	9.64 charge
5/2/2023 1:00	5	0.23	4.77 charge
5/2/2023 1:00	20	0.62	19.38 charge
5/2/2023 1:00	5	0.23	4.77 charge
5/2/2023 1:00	20	0.62	19.38 charge
	<b>300</b>	<b>10.6</b>	<b>289.4</b>

5/2/2023 1:00	-0.04	0	-0.04 fee
5/2/2023 1:00	-0.02	0	-0.02 fee
5/2/2023 1:00	-0.02	0	-0.02 fee
	<b>-0.08</b>	<b>0</b>	<b>-0.08</b>

5/2/2023 1:00	75	1.25	73.75 charge
5/2/2023 1:00	75	1.25	73.75 charge
5/2/2023 1:00	85	1.39	83.61 charge
5/2/2023 1:00	10	0.34	9.66 charge
5/2/2023 1:00	75	1.25	73.75 charge
5/2/2023 1:00	10	0.34	9.66 charge
	<b>330</b>	<b>5.82</b>	<b>324.2</b>

---

<b>Totals 30/06/2023</b>	<b>629.9</b>	<b>16.4</b>	<b>613.5</b>
--------------------------	--------------	-------------	--------------

---

### Stipe Payout Report May 2023

5/31/2023 1:00	30	0.88	29.12 charge
5/31/2023 1:00	30	0.88	29.12 charge

5/31/2023 1:00	40	1.14	38.86 charge
5/31/2023 1:00	50	0.95	49.05 charge
	<b>150</b>	<b>3.85</b>	<b>146.2</b>

5/31/2023 1:00	6.29	0.29	6 charge
5/31/2023 1:00	10.34	0.36	9.98 charge
5/31/2023 1:00	10	0.35	9.65 charge
5/31/2023 1:00	5	0.23	4.77 charge
5/31/2023 1:00	5	0.23	4.77 charge
5/31/2023 1:00	5	0.23	4.77 charge
5/31/2023 1:00	5	0.23	4.77 charge
5/31/2023 1:00	5	0.23	4.77 charge
5/31/2023 1:00	7	0.28	6.72 charge
5/31/2023 1:00	5	0.23	4.77 charge
5/31/2023 1:00	5	0.23	4.77 charge
5/31/2023 1:00	5	0.23	4.77 charge
5/31/2023 1:00	17	0.54	16.46 charge
5/31/2023 1:00	10	0.47	9.53 charge
5/31/2023 1:00	10	0.36	9.64 charge
5/31/2023 1:00	10	0.36	9.64 charge
5/31/2023 1:00	5	0.23	4.77 charge
5/31/2023 1:00	5	0.34	4.66 charge
5/31/2023 1:00	10	0.36	9.64 charge
5/31/2023 1:00	5	0.23	4.77 charge
5/31/2023 1:00	5	0.23	4.77 charge

5/31/2023 1:00	5	0.23	4.77 charge
5/31/2023 1:00	10	0.36	9.64 charge
5/31/2023 1:00	5	0.23	4.77 charge
5/31/2023 1:00	10	0.36	9.64 charge
5/31/2023 1:00	5	0.23	4.77 charge
5/31/2023 1:00	10	0.36	9.64 charge
5/31/2023 1:00	5	0.23	4.77 charge
5/31/2023 1:00	5	0.23	4.77 charge
5/31/2023 1:00	5	0.23	4.77 charge
5/31/2023 1:00	5	0.23	4.77 charge
	<b>215.6</b>	<b>8.93</b>	<b>206.7</b>

5/31/2023 1:00	-0.04	0	-0.04 fee
5/31/2023 1:00	-0.02	0	-0.02 fee
5/31/2023 1:00	-0.04	0	-0.04 fee
5/31/2023 1:00	-0.02	0	-0.02 fee
5/31/2023 1:00	-0.04	0	-0.04 fee
5/31/2023 1:00	-0.02	0	-0.02 fee
5/31/2023 1:00	-0.02	0	-0.02 fee
	<b>-0.2</b>	<b>0</b>	<b>-0.2</b>

---

Totals 31/05/2023	<b>365.4</b>	<b>12.8</b>	<b>352.7</b>
-------------------	--------------	-------------	--------------

---

**Stripe Payout Report 30/06/2023**

6/30/2023 1:00	12.99	0.43	12.56 charge
6/30/2023 1:00	12.99	0.43	12.56 charge
6/30/2023 1:00	12.99	0.43	12.56 charge
6/30/2023 1:00	12.99	0.43	12.56 charge
6/30/2023 1:00	12.99	0.43	12.56 charge
	12.99	0.43	12.56 charge
	<b>77.94</b>	<b>2.58</b>	<b>75.36</b>

6/30/2023 1:00	5	0.28	4.72 charge
6/30/2023 1:00	10.34	0.36	9.98 charge
6/30/2023 1:00	5	0.28	4.72 charge
6/30/2023 1:00	10	0.35	9.65 charge
6/30/2023 1:00	10	0.35	9.65 charge
6/30/2023 1:00	5	0.28	4.72 charge
6/30/2023 1:00	15	0.43	14.57 charge
6/30/2023 1:00	10	0.35	9.65 charge
6/30/2023 1:00	5	0.23	4.77 charge
6/30/2023 1:00	5	0.23	4.77 charge
6/30/2023 1:00	10	0.36	9.64 charge
6/30/2023 1:00	5	0.23	4.77 charge
6/30/2023 1:00	10	0.36	9.64 charge
6/30/2023 1:00	5	0.23	4.77 charge
6/30/2023 1:00	5	0.23	4.77 charge
6/30/2023 1:00	5	0.23	4.77 charge
6/30/2023 1:00	5	0.23	4.77 charge

6/30/2023 1:00	20	0.62	19.38 charge
6/30/2023 1:00	5	0.23	4.77 charge
6/30/2023 1:00	10	0.36	9.64 charge
6/30/2023 1:00	12	0.52	11.48 charge
6/30/2023 1:00	15	0.61	14.39 charge
6/30/2023 1:00	25	0.88	24.12 charge
6/30/2023 1:00	<b>212.3</b>	<b>8.23</b>	<b>204.1</b>
6/30/2023 1:00			
6/30/2023 1:00	95	2.77	92.23 charge
6/30/2023 1:00	20	0.5	19.5 charge
6/30/2023 1:00	10	0.35	9.65 charge
6/30/2023 1:00	<b>125</b>	<b>3.62</b>	<b>121.4</b>
6/30/2023 1:00			
6/30/2023 1:00	-0.08	0	-0.08 fee
6/30/2023 1:00	-0.02	0	-0.02 fee
6/30/2023 1:00	-0.02	0	-0.02 fee
6/30/2023 1:00	-0.04	0	-0.04 fee
6/30/2023 1:00	-0.02	0	-0.02 fee
6/30/2023 1:00	-0.04	0	-0.04 fee
	-0.06	0	-0.06 fee
	-0.06	0	-0.06 fee
	<b>-0.34</b>	<b>0</b>	<b>-0.34</b>
Totals 30/06/2023	<b>414.9</b>	<b>14.4</b>	<b>400.5</b>

### Stripe Report July 2023

	20	0.5	19.5 charge
7/31/2023 1:00	5	0.23	4.77 charge
7/31/2023 1:00	10	0.36	9.64 charge
7/31/2023 1:00	5	0.23	4.77 charge
7/31/2023 1:00	5	0.23	4.77 charge

7/31/2023 1:00	5	0.23	4.77 charge
7/31/2023 1:00	5	0.23	4.77 charge
7/31/2023 1:00	10	0.36	9.64 charge
7/31/2023 1:00	5	0.23	4.77 charge
7/31/2023 1:00	5	0.23	4.77 charge
7/31/2023 1:00	5	0.23	4.77 charge
7/31/2023 1:00	5	0.23	4.77 charge
7/31/2023 1:00	5	0.23	4.77 charge
7/31/2023 1:00	5	0.23	4.77 charge
7/31/2023 1:00	10	0.36	9.64 charge
7/31/2023 1:00	3	0.18	2.82 charge
7/31/2023 1:00	5	0.23	4.77 charge
7/31/2023 1:00	5	0.23	4.77 charge
7/31/2023 1:00	10	0.36	9.64 charge
7/31/2023 1:00	20	0.5	19.5 charge
7/31/2023 1:00	22	0.79	21.21 charge
7/31/2023 1:00	10	0.36	9.64 charge
7/31/2023 1:00	45	1.27	43.73 charge
	<b>225</b>	<b>8.03</b>	<b>217</b>

7/31/2023 1:00	-0.08	0	-0.08 fee
7/31/2023 1:00	-0.02	0	-0.02 fee
7/31/2023 1:00	-0.04	0	-0.04 fee
7/31/2023 1:00	-0.02	0	-0.02 fee
	<b>-0.16</b>	<b>0</b>	<b>-0.16</b>

---

### Stripe Report August 2023

8/31/2023 1:00	-0.02	0	-0.02 fee
8/31/2023 1:00	-0.06	0	-0.06 fee
8/31/2023 1:00	-0.04	0	-0.04 fee
	<b>-0.12</b>	<b>0</b>	<b>-0.12</b>

8/31/2023 1:00	5.27	0.28	4.99 charge
8/31/2023 1:00	203.04	6.8	196.24 charge
8/31/2023 1:00	2	0.23	1.77 charge
	<b>210.3</b>	<b>7.31</b>	<b>203</b>

8/31/2023 1:00	10	0.36	9.64 charge
8/31/2023 1:00	5	0.23	4.77 charge
8/31/2023 1:00	5	0.23	4.77 charge
8/31/2023 1:00	5	0.23	4.77 charge
8/31/2023 1:00	5	0.23	4.77 charge
8/31/2023 1:00	5	0.23	4.77 charge
8/31/2023 1:00	10	0.36	9.64 charge
8/31/2023 1:00	5	0.23	4.77 charge
8/31/2023 1:00	5	0.23	4.77 charge
8/31/2023 1:00	5	0.23	4.77 charge
8/31/2023 1:00	5	0.23	4.77 charge
8/31/2023 1:00	20	0.92	19.08 charge
8/31/2023 1:00	5	0.23	4.77 charge
8/31/2023 1:00	5	0.23	4.77 charge
8/31/2023 1:00	5	0.23	4.77 charge
8/31/2023 1:00	10	0.36	9.64 charge
8/31/2023 1:00	5	0.23	4.77 charge
8/31/2023 1:00	5	0.23	4.77 charge
8/31/2023 1:00	55	1.53	53.47 charge
8/31/2023 1:00	17	0.66	16.34 charge
8/31/2023 1:00	20	0.62	19.38 charge
8/31/2023 1:00	22	0.67	21.33 charge
	<b>234</b>	<b>8.7</b>	<b>225.3</b>

---

**Stripe Report September 2023**

9/1/2023 10:12	10/2/2023 1:00	0.01	0	0.01 fee
9/1/2023 10:13	10/2/2023 1:00	0.01	0	0.01 fee
9/1/2023 10:12	10/2/2023 1:00	-1	0	-1 refund
9/1/2023 10:13	10/2/2023 1:00	-1	0	-1 refund
8/30/2023 9:00	10/2/2023 1:00	-0.04	0	-0.04 fee
9/6/2023 8:58	10/2/2023 1:00	-0.02	0	-0.02 fee
9/13/2023 7:02	10/2/2023 1:00	-0.02	0	-0.02 fee
9/14/2023 6:44	10/2/2023 1:00	-0.02	0	-0.02 fee
9/20/2023 6:55	10/2/2023 1:00	-0.04	0	-0.04 fee
9/24/2023 6:49	10/2/2023 1:00	-0.02	0	-0.02 fee
9/25/2023 6:40	10/2/2023 1:00	-0.04	0	-0.04 fee
		<b>-2.18</b>	<b>0</b>	<b>-2.18</b>

9/26/2023 20:40	10/2/2023 1:00	10	0.36	9.64 charge
9/26/2023 20:41	10/2/2023 1:00	5	0.23	4.77 charge
9/26/2023 20:41	10/2/2023 1:00	5	0.23	4.77 charge
9/26/2023 20:47	10/2/2023 1:00	5	0.23	4.77 charge
9/26/2023 20:48	10/2/2023 1:00	5	0.23	4.77 charge
9/26/2023 20:49	10/2/2023 1:00	5	0.23	4.77 charge
9/26/2023 20:49	10/2/2023 1:00	5	0.23	4.77 charge
9/12/2023 17:39	10/2/2023 1:00	10	0.35	9.65 charge
9/23/2023 16:42	10/2/2023 1:00	20	0.5	19.5 charge
		<b>70</b>	<b>2.59</b>	<b>67.41</b>

8/29/2023 20:06	10/2/2023 1:00	5	0.23	4.77 charge
8/29/2023 20:07	10/2/2023 1:00	5	0.23	4.77 charge
8/29/2023 20:08	10/2/2023 1:00	5	0.23	4.77 charge
8/29/2023 20:25	10/2/2023 1:00	15	0.61	14.39 charge
9/1/2023 10:12	10/2/2023 1:00	1	0.12	0.88 charge
9/1/2023 10:13	10/2/2023 1:00	1	0.12	0.88 charge
9/2/2023 16:22	10/2/2023 1:00	20	0.62	19.38 charge
9/2/2023 16:41	10/2/2023 1:00	10	0.36	9.64 charge

9/5/2023 20:40	10/2/2023 1:00	10	0.36	9.64 charge
9/5/2023 20:43	10/2/2023 1:00	5	0.23	4.77 charge
9/5/2023 20:50	10/2/2023 1:00	5	0.23	4.77 charge
9/5/2023 20:51	10/2/2023 1:00	5	0.23	4.77 charge
9/5/2023 20:52	10/2/2023 1:00	5	0.23	4.77 charge
9/5/2023 21:21	10/2/2023 1:00	26.57	0.6	25.97 charge
9/10/2023 14:11	10/2/2023 1:00	20	0.62	19.38 charge
9/10/2023 16:08	10/2/2023 1:00	37	1.06	35.94 charge
9/12/2023 20:40	10/2/2023 1:00	5	0.23	4.77 charge
9/12/2023 20:40	10/2/2023 1:00	5	0.23	4.77 charge
9/12/2023 20:41	10/2/2023 1:00	5	0.23	4.77 charge
9/12/2023 20:42	10/2/2023 1:00	10	0.36	9.64 charge
9/12/2023 20:43	10/2/2023 1:00	5	0.23	4.77 charge
9/12/2023 20:44	10/2/2023 1:00	5	0.23	4.77 charge
9/12/2023 20:46	10/2/2023 1:00	5	0.23	4.77 charge
9/12/2023 20:54	10/2/2023 1:00	5	0.23	4.77 charge
9/13/2023 9:54	10/2/2023 1:00	15.42	0.43	14.99 charge
9/19/2023 20:41	10/2/2023 1:00	5	0.23	4.77 charge
9/19/2023 20:41	10/2/2023 1:00	5	0.23	4.77 charge
9/19/2023 20:42	10/2/2023 1:00	5	0.23	4.77 charge
9/19/2023 20:47	10/2/2023 1:00	5	0.23	4.77 charge
9/19/2023 20:58	10/2/2023 1:00	26	0.9	25.1 charge
9/24/2023 16:19	10/2/2023 1:00	25	1.13	23.87 charge
9/24/2023 16:20	10/2/2023 1:00	15	0.49	14.51 charge
9/24/2023 16:20	10/2/2023 1:00	10	0.36	9.64 charge
9/24/2023 16:20	10/2/2023 1:00	10	0.36	9.64 charge
9/24/2023 16:22	10/2/2023 1:00	10	0.36	9.64 charge
9/24/2023 16:23	10/2/2023 1:00	10	0.36	9.64 charge
9/24/2023 16:29	10/2/2023 1:00	15	0.49	14.51 charge
9/24/2023 16:33	10/2/2023 1:00	10	0.36	9.64 charge
9/24/2023 16:34	10/2/2023 1:00	10	0.36	9.64 charge
9/24/2023 16:36	10/2/2023 1:00	10	0.36	9.64 charge

			<b>407</b>	<b>14.9</b>	<b>392.1</b>
9/2/2023 16:40	10/2/2023 1:00	120	3.22	116.78	charge
9/24/2023 17:26	10/2/2023 1:00	105	3.04	101.96	charge
9/27/2023 13:44	10/2/2023 1:00	95	1.63	93.37	charge
9/27/2023 11:47	10/2/2023 1:00	95	1.63	93.37	charge
			<b>415</b>	<b>9.52</b>	<b>405.5</b>

---

## Stripe Report October

10/4/2023 18:50	10/31/2023 0:00	-0.3	0	-0.3
10/7/2023 18:49	10/31/2023 0:00	-0.1	0	-0.1
10/16/2023 6:42	10/31/2023 0:00	-0.1	0	-0.1
10/12/2023 6:56	10/31/2023 0:00	-0.08	0	-0.08
9/28/2023 6:53	10/31/2023 0:00	-0.06	0	-0.06
10/10/2023 6:53	10/31/2023 0:00	-0.06	0	-0.06
10/11/2023 6:50	10/31/2023 0:00	-0.06	0	-0.06
10/20/2023 6:51	10/31/2023 0:00	-0.06	0	-0.06
9/29/2023 7:02	10/31/2023 0:00	-0.04	0	-0.04
9/30/2023 7:05	10/31/2023 0:00	-0.04	0	-0.04
10/2/2023 6:44	10/31/2023 0:00	-0.02	0	-0.02
10/4/2023 10:19	10/31/2023 0:00	-0.02	0	-0.02
10/17/2023 6:52	10/31/2023 0:00	-0.02	0	-0.02
10/18/2023 6:51	10/31/2023 0:00	-0.02	0	-0.02
		<b>-0.98</b>	<b>0</b>	<b>-0.98</b>
10/19/2023 15:50	10/31/2023 0:00	8.32	0.32	8
10/3/2023 22:23	10/31/2023 0:00	17	0.46	16.54
10/17/2023 16:46	10/31/2023 0:00	10.34	0.36	9.98
10/10/2023 21:00	10/31/2023 0:00	22.35	0.81	21.54
		<b>58.01</b>	<b>1.95</b>	<b>56.06</b>

10/3/2023 20:21	10/31/2023 0:00	1	0.12	0.88
9/29/2023 20:35	10/31/2023 0:00	4	0.21	3.79
10/10/2023 20:43	10/31/2023 0:00	4	0.21	3.79
9/28/2023 9:51	10/31/2023 0:00	5	0.34	4.66
9/29/2023 20:49	10/31/2023 0:00	5	0.23	4.77
10/3/2023 20:25	10/31/2023 0:00	5	0.23	4.77
10/3/2023 20:27	10/31/2023 0:00	5	0.23	4.77
10/3/2023 20:27	10/31/2023 0:00	5	0.23	4.77
10/3/2023 20:29	10/31/2023 0:00	5	0.23	4.77
10/10/2023 20:40	10/31/2023 0:00	5	0.23	4.77
10/10/2023 20:41	10/31/2023 0:00	5	0.23	4.77
10/10/2023 20:53	10/31/2023 0:00	5	0.23	4.77
10/10/2023 20:54	10/31/2023 0:00	5	0.23	4.77
10/17/2023 20:35	10/31/2023 0:00	5	0.23	4.77
10/17/2023 20:36	10/31/2023 0:00	5	0.23	4.77
10/17/2023 20:37	10/31/2023 0:00	5	0.23	4.77
10/17/2023 20:38	10/31/2023 0:00	5	0.23	4.77
10/17/2023 20:38	10/31/2023 0:00	5	0.23	4.77
10/17/2023 20:39	10/31/2023 0:00	5	0.23	4.77
10/17/2023 20:40	10/31/2023 0:00	5	0.23	4.77
10/17/2023 20:41	10/31/2023 0:00	5	0.23	4.77
10/17/2023 20:52	10/31/2023 0:00	5	0.23	4.77
10/24/2023 20:40	10/31/2023 0:00	5	0.23	4.77
10/24/2023 20:41	10/31/2023 0:00	5	0.23	4.77
10/24/2023 20:43	10/31/2023 0:00	5	0.23	4.77
10/24/2023 20:45	10/31/2023 0:00	5	0.23	4.77
10/17/2023 20:52	10/31/2023 0:00	6	0.25	5.75
10/10/2023 20:52	10/31/2023 0:00	7	0.28	6.72
10/24/2023 20:44	10/31/2023 0:00	7	0.28	6.72
10/15/2023 8:30	10/31/2023 0:00	10	0.35	9.65
10/17/2023 20:34	10/31/2023 0:00	10	0.36	9.64

10/24/2023 20:36	10/31/2023 0:00	10	0.36	9.64
10/24/2023 20:38	10/31/2023 0:00	10	0.36	9.64
10/24/2023 20:38	10/31/2023 0:00	10	0.36	9.64
9/29/2023 21:05	10/31/2023 0:00	15	0.61	14.39
10/9/2023 10:11	10/31/2023 0:00	15	0.43	14.57
10/24/2023 20:36	10/31/2023 0:00	15	0.49	14.51
10/9/2023 9:58	10/31/2023 0:00	34	1.12	32.88

---

**273 11.2 261.8**

9/29/2023 20:27	10/31/2023 0:00	10	0.36	9.64
9/29/2023 20:28	10/31/2023 0:00	10	0.36	9.64
10/3/2023 20:22	10/31/2023 0:00	10	0.36	9.64
10/3/2023 20:28	10/31/2023 0:00	10	0.36	9.64
10/10/2023 14:17	10/31/2023 0:00	10	0.35	9.65
10/10/2023 20:40	10/31/2023 0:00	10	0.36	9.64
9/29/2023 20:27	10/31/2023 0:00	20	0.62	19.38
10/11/2023 10:06	10/31/2023 0:00	75	1.33	73.67
10/11/2023 19:23	10/31/2023 0:00	75	1.33	73.67
10/1/2023 20:54	10/31/2023 0:00	80	1.4	78.6
10/11/2023 12:40	10/31/2023 0:00	80	1.4	78.6
10/16/2023 12:55	10/31/2023 0:00	90	1.55	88.45
10/11/2023 12:50	10/31/2023 0:00	100	1.7	98.3
10/19/2023 18:45	10/31/2023 0:00	110	1.85	108.15

---

**690 13.3 676.7**

10/24/2023 20:55	10/31/2023 0:00	25	0.75	24.25
------------------	-----------------	----	------	-------

---

**25 0.75 24.25**

---

### Stripe November 2023

10/27/2023 20:56	11/30/2023 0:00	-0.04	0	-0.04 fee
10/28/2023 6:53	11/30/2023 0:00	-0.04	0	-0.04 fee

11/1/2023 5:57	11/30/2023 0:00	-0.04	0	-0.04 fee
11/8/2023 6:01	11/30/2023 0:00	-0.04	0	-0.04 fee
11/12/2023 5:43	11/30/2023 0:00	-0.04	0	-0.04 fee
11/14/2023 5:45	11/30/2023 0:00	-0.02	0	-0.02 fee
11/15/2023 5:35	11/30/2023 0:00	-0.04	0	-0.04 fee
11/18/2023 7:48	11/30/2023 0:00	-0.02	0	-0.02 fee
11/25/2023 5:53	11/30/2023 0:00	-0.04	0	-0.04 fee
		<b>-0.32</b>	<b>0</b>	<b>-0.32</b>

10/29/2023 13:52	11/30/2023 0:00	10	0.36	9.64 charge
10/29/2023 13:53	11/30/2023 0:00	10	0.36	9.64 charge
10/29/2023 13:53	11/30/2023 0:00	5	0.23	4.77 charge
10/29/2023 13:53	11/30/2023 0:00	20	0.62	19.38 charge
10/29/2023 13:54	11/30/2023 0:00	10	0.36	9.64 charge
10/29/2023 13:57	11/30/2023 0:00	10	0.36	9.64 charge
10/29/2023 14:05	11/30/2023 0:00	10	0.36	9.64 charge
10/31/2023 20:39	11/30/2023 0:00	7.5	0.3	7.2 charge
10/31/2023 20:41	11/30/2023 0:00	10	0.36	9.64 charge
10/31/2023 20:42	11/30/2023 0:00	5	0.23	4.77 charge
10/31/2023 20:47	11/30/2023 0:00	5	0.23	4.77 charge
11/21/2023 20:55	11/30/2023 0:00	40	1.14	38.86 charge
11/26/2023 5:44	11/30/2023 0:00	30	1.01	28.99 charge
		<b>172.5</b>	<b>5.92</b>	<b>166.6</b>

11/7/2023 20:45	11/30/2023 0:00	35	1.15	33.85 charge
11/21/2023 20:48	11/30/2023 0:00	25	0.75	24.25 charge
11/11/2023 17:48	11/30/2023 0:00	253.75	4.01	249.74 charge
10/31/2023 19:59	11/30/2023 0:00	10	0.35	9.65 charge
		<b>323.8</b>	<b>6.26</b>	<b>317.5</b>

10/27/2023 20:32	11/30/2023 0:00	5	0.23	4.77 charge
10/27/2023 20:33	11/30/2023 0:00	5	0.23	4.77 charge
10/27/2023 20:35	11/30/2023 0:00	5	0.23	4.77 charge
10/27/2023 20:36	11/30/2023 0:00	5	0.23	4.77 charge
10/27/2023 20:36	11/30/2023 0:00	10	0.36	9.64 charge
10/27/2023 20:38	11/30/2023 0:00	5	0.23	4.77 charge
10/27/2023 20:39	11/30/2023 0:00	5	0.23	4.77 charge
10/27/2023 20:40	11/30/2023 0:00	5	0.23	4.77 charge
10/27/2023 20:40	11/30/2023 0:00	25	0.75	24.25 charge
11/7/2023 20:36	11/30/2023 0:00	5	0.23	4.77 charge
11/7/2023 20:36	11/30/2023 0:00	10	0.36	9.64 charge
11/7/2023 20:37	11/30/2023 0:00	5	0.23	4.77 charge
11/7/2023 20:37	11/30/2023 0:00	10	0.36	9.64 charge
11/7/2023 20:38	11/30/2023 0:00	5	0.23	4.77 charge
11/7/2023 20:40	11/30/2023 0:00	5	0.23	4.77 charge
11/7/2023 21:26	11/30/2023 0:00	15	0.49	14.51 charge
11/11/2023 14:19	11/30/2023 0:00	10	0.36	9.64 charge
11/14/2023 12:28	11/30/2023 0:00	10	0.36	9.64 charge
11/14/2023 20:37	11/30/2023 0:00	10	0.36	9.64 charge
11/14/2023 20:40	11/30/2023 0:00	10	0.36	9.64 charge
11/14/2023 20:43	11/30/2023 0:00	5	0.23	4.77 charge
11/14/2023 20:48	11/30/2023 0:00	5	0.23	4.77 charge
11/17/2023 20:36	11/30/2023 0:00	10	0.36	9.64 charge
11/17/2023 20:40	11/30/2023 0:00	5	0.23	4.77 charge
11/17/2023 20:40	11/30/2023 0:00	5	0.23	4.77 charge
11/17/2023 20:40	11/30/2023 0:00	11	0.5	10.5 charge
11/17/2023 20:44	11/30/2023 0:00	10	0.36	9.64 charge
11/21/2023 20:35	11/30/2023 0:00	10	0.36	9.64 charge
11/21/2023 20:37	11/30/2023 0:00	5	0.23	4.77 charge
11/21/2023 20:38	11/30/2023 0:00	5	0.23	4.77 charge
11/21/2023 20:40	11/30/2023 0:00	5	0.23	4.77 charge
11/21/2023 20:43	11/30/2023 0:00	10	0.36	9.64 charge

---

**251 9.84 241.2**

10/31/2023 20:52	11/30/2023 0:00	20	0.5	19.5 charge
11/13/2023 21:27	11/30/2023 0:00	75	1.33	73.67 charge
11/24/2023 16:02	11/30/2023 0:00	85	1.48	83.52 charge
		<b>180</b>	<b>3.31</b>	<b>176.7</b>

11/25/2023 9:38	11/30/2023 0:00	5	0.34	4.66 charge
		<b>5</b>	<b>0.34</b>	<b>4.66</b>

---

**Stripe Payout December 2023**

11/29/2023 5:38	1/2/2024 0:00	-0.06	0	-0.06 fee
11/30/2023 5:49	1/2/2024 0:00	-0.02	0	-0.02 fee
12/2/2023 6:06	1/2/2024 0:00	-0.04	0	-0.04 fee
12/3/2023 6:02	1/2/2024 0:00	-0.04	0	-0.04 fee
12/6/2023 5:43	1/2/2024 0:00	-0.14	0	-0.14 fee
12/7/2023 6:00	1/2/2024 0:00	-0.12	0	-0.12 fee
12/8/2023 5:58	1/2/2024 0:00	-0.04	0	-0.04 fee
12/11/2023 6:14	1/2/2024 0:00	-0.06	0	-0.06 fee
12/12/2023 5:54	1/2/2024 0:00	-0.02	0	-0.02 fee
12/13/2023 5:40	1/2/2024 0:00	-0.02	0	-0.02 fee
12/16/2023 8:02	1/2/2024 0:00	-0.1	0	-0.1 fee
12/18/2023 5:57	1/2/2024 0:00	-0.04	0	-0.04 fee
12/19/2023 5:47	1/2/2024 0:00	-0.08	0	-0.08 fee
12/20/2023 8:53	1/2/2024 0:00	-0.02	0	-0.02 fee
12/6/2023 17:33	1/2/2024 0:00	-0.1	0	-0.1 fee
		<b>-0.9</b>	<b>0</b>	<b>-0.9</b>

12/18/2023 11:40	1/2/2024 0:00	40.77	0.81	39.96 charge
12/11/2023 17:29	1/2/2024 0:00	71.2	1.27	69.93 charge

12/19/2023 19:23	1/2/2024 0:00	10	0.35	9.65 charge
12/12/2023 12:42	1/2/2024 0:00	30	0.65	29.35 charge
12/2/2023 9:07	1/2/2024 0:00	21	0.52	20.48 charge
12/10/2023 16:52	1/2/2024 0:00	30.63	0.66	29.97 charge
12/6/2023 11:06	1/2/2024 0:00	20	0.5	19.5 charge
		<b>223.6</b>	<b>4.76</b>	<b>218.8</b>

11/28/2023 20:59	1/2/2024 0:00	25	0.88	24.12 charge
11/28/2023 20:43	1/2/2024 0:00	10	0.36	9.64 charge
11/28/2023 20:43	1/2/2024 0:00	5	0.23	4.77 charge
11/28/2023 20:45	1/2/2024 0:00	5	0.23	4.77 charge
12/1/2023 20:33	1/2/2024 0:00	10	0.36	9.64 charge
12/1/2023 20:35	1/2/2024 0:00	5	0.23	4.77 charge
12/1/2023 20:39	1/2/2024 0:00	5	0.23	4.77 charge
12/1/2023 20:40	1/2/2024 0:00	5	0.23	4.77 charge
12/1/2023 20:41	1/2/2024 0:00	5	0.23	4.77 charge
12/5/2023 20:54	1/2/2024 0:00	10	0.36	9.64 charge
12/19/2023 17:32	1/2/2024 0:00	1	0.12	0.88 charge
12/19/2023 20:07	1/2/2024 0:00	5	0.23	4.77 charge
12/19/2023 20:10	1/2/2024 0:00	5	0.23	4.77 charge
12/19/2023 20:16	1/2/2024 0:00	5	0.23	4.77 charge
12/19/2023 20:17	1/2/2024 0:00	5	0.23	4.77 charge
12/19/2023 20:18	1/2/2024 0:00	20	0.92	19.08 charge
12/19/2023 20:19	1/2/2024 0:00	10	0.36	9.64 charge
12/19/2023 20:23	1/2/2024 0:00	10	0.36	9.64 charge
12/5/2023 20:40	1/2/2024 0:00	10	0.36	9.64 charge
12/5/2023 20:40	1/2/2024 0:00	5	0.23	4.77 charge
12/5/2023 20:42	1/2/2024 0:00	5	0.23	4.77 charge
12/5/2023 20:46	1/2/2024 0:00	5	0.23	4.77 charge
12/5/2023 20:51	1/2/2024 0:00	10	0.36	9.64 charge
12/12/2023 20:36	1/2/2024 0:00	8	0.31	7.69 charge
12/12/2023 20:37	1/2/2024 0:00	10	0.36	9.64 charge

12/12/2023 20:40	1/2/2024 0:00	5	0.23	4.77 charge
12/12/2023 20:42	1/2/2024 0:00	3	0.18	2.82 charge
12/12/2023 20:43	1/2/2024 0:00	10	0.36	9.64 charge
12/12/2023 20:47	1/2/2024 0:00	10	0.36	9.64 charge
12/12/2023 20:54	1/2/2024 0:00	15	0.49	14.51 charge
		<b>242</b>	<b>9.72</b>	<b>232.3</b>

12/18/2023 12:12	1/2/2024 0:00	-85	0	-85 refund
12/18/2023 12:51	1/2/2024 0:00	66.13	1.19	64.94 charge
12/15/2023 11:14	1/2/2024 0:00	90	1.55	88.45 charge
12/7/2023 19:30	1/2/2024 0:00	75	1.33	73.67 charge
11/28/2023 19:42	1/2/2024 0:00	75	1.33	73.67 charge
12/5/2023 21:10	1/2/2024 0:00	40	0.8	39.2 charge
12/5/2023 9:59	1/2/2024 0:00	32.5	0.69	31.81 charge
12/2/2023 14:12	1/2/2024 0:00	10	0.35	9.65 charge
12/6/2023 9:44	1/2/2024 0:00	75	1.33	73.67 charge
12/6/2023 7:41	1/2/2024 0:00	75	1.33	73.67 charge
11/29/2023 6:31	1/2/2024 0:00	85	1.48	83.52 charge
12/10/2023 19:14	1/2/2024 0:00	20	0.5	19.5 charge
12/5/2023 11:24	1/2/2024 0:00	85	1.48	83.52 charge
12/15/2023 12:01	1/2/2024 0:00	90	1.55	88.45 charge
12/18/2023 15:19	1/2/2024 0:00	100	1.7	98.3 charge
		<b>833.6</b>	<b>16.6</b>	<b>817</b>

12/1/2023 20:59	1/2/2024 0:00	5	0.34	4.66 charge
		<b>5</b>	<b>0.34</b>	<b>4.66</b>

---

## Stripe Payout January 2023

1/25/2024 11:08	1/30/2024 0:00	50	1.55	48.45 charge
-----------------	----------------	----	------	--------------

			<b>50</b>	<b>1.55</b>	<b>48.45</b>
1/26/2024 5:57	1/26/2024 5:57		0	0.02	-0.02 fee
			<b>0</b>	<b>0.02</b>	<b>-0.02</b>
1/16/2024 20:40	1/19/2024 0:00	20	0.62	19.38	charge
1/16/2024 20:42	1/19/2024 0:00	5	0.23	4.77	charge
1/16/2024 20:44	1/19/2024 0:00	10	0.36	9.64	charge
1/16/2024 20:46	1/19/2024 0:00	10	0.36	9.64	charge
1/16/2024 20:47	1/19/2024 0:00	5	0.23	4.77	charge
1/16/2024 20:52	1/19/2024 0:00	10	0.36	9.64	charge
1/16/2024 20:52	1/19/2024 0:00	10	0.36	9.64	charge
1/16/2024 20:54	1/19/2024 0:00	5	0.23	4.77	charge
1/16/2024 20:59	1/19/2024 0:00	50	1.4	48.6	charge
1/23/2024 20:35	1/26/2024 0:00	10	0.36	9.64	charge
1/23/2024 20:39	1/26/2024 0:00	10	0.36	9.64	charge
1/23/2024 20:41	1/26/2024 0:00	10	0.36	9.64	charge
1/23/2024 20:43	1/26/2024 0:00	5	0.23	4.77	charge
1/23/2024 20:44	1/26/2024 0:00	3	0.18	2.82	charge
1/23/2024 20:44	1/26/2024 0:00	10	0.36	9.64	charge
1/23/2024 20:45	1/26/2024 0:00	5	0.23	4.77	charge
1/23/2024 20:45	1/26/2024 0:00	5	0.23	4.77	charge
1/23/2024 20:46	1/26/2024 0:00	5	0.23	4.77	charge
1/23/2024 20:51	1/26/2024 0:00	15	0.49	14.51	charge
1/26/2024 20:29	1/31/2024 0:00	5	0.23	4.77	charge
1/26/2024 20:31	1/31/2024 0:00	3	0.18	2.82	charge
1/26/2024 20:32	1/31/2024 0:00	5	0.23	4.77	charge
1/26/2024 20:34	1/31/2024 0:00	5	0.23	4.77	charge
1/26/2024 20:35	1/31/2024 0:00	5	0.23	4.77	charge
1/26/2024 20:36	1/31/2024 0:00	5	0.23	4.77	charge
1/26/2024 20:38	1/31/2024 0:00	5	0.23	4.77	charge

1/26/2024 20:38	1/31/2024 0:00	10	0.36	9.64 charge
1/26/2024 20:39	1/31/2024 0:00	5	0.23	4.77 charge
		<b>251</b>	<b>9.33</b>	<b>241.7</b>
		301	10.9	290.1

---

## Stripe Payout February 2024

2/12/2024 10:01	2/29/2024 0:00	15	0.43	14.57 charge
		<b>15</b>	<b>0.43</b>	<b>14.57</b>
2/9/2024 20:32	2/29/2024 0:00	10	0.51	9.49 charge
2/9/2024 20:32	2/29/2024 0:00	2	0.15	1.85 charge
2/9/2024 20:33	2/29/2024 0:00	5	0.23	4.77 charge
2/9/2024 20:34	2/29/2024 0:00	5	0.23	4.77 charge
2/9/2024 20:34	2/29/2024 0:00	5	0.23	4.77 charge
2/9/2024 20:38	2/29/2024 0:00	5	0.23	4.77 charge
2/11/2024 14:11	2/29/2024 0:00	10	0.36	9.64 charge
2/11/2024 14:12	2/29/2024 0:00	10	0.36	9.64 charge
2/11/2024 14:12	2/29/2024 0:00	20	0.62	19.38 charge
2/13/2024 20:33	2/29/2024 0:00	5	0.23	4.77 charge
2/13/2024 20:33	2/29/2024 0:00	10	0.36	9.64 charge
2/13/2024 20:34	2/29/2024 0:00	10	0.36	9.64 charge
2/13/2024 20:34	2/29/2024 0:00	10	0.36	9.64 charge
2/13/2024 20:36	2/29/2024 0:00	5	0.23	4.77 charge
2/13/2024 20:39	2/29/2024 0:00	5	0.23	4.77 charge
2/13/2024 20:41	2/29/2024 0:00	5	0.23	4.77 charge
2/13/2024 20:45	2/29/2024 0:00	10	0.36	9.64 charge
2/13/2024 6:12	2/29/2024 0:00	-0.02	0	-0.02 fee
2/20/2024 20:59	2/29/2024 0:00	2	0.15	1.85 charge

1/30/2024 20:56	2/29/2024 0:00	50	1.4	48.6 charge
2/6/2024 20:56	2/29/2024 0:00	57	1.58	55.42 charge
1/30/2024 20:37	2/29/2024 0:00	5	0.23	4.77 charge
1/30/2024 20:39	2/29/2024 0:00	5	0.23	4.77 charge
1/30/2024 20:40	2/29/2024 0:00	10	0.36	9.64 charge
1/30/2024 20:41	2/29/2024 0:00	5	0.31	4.69 charge
1/30/2024 20:42	2/29/2024 0:00	10	0.36	9.64 charge
1/30/2024 20:43	2/29/2024 0:00	5	0.23	4.77 charge
1/30/2024 20:44	2/29/2024 0:00	5	0.23	4.77 charge
1/30/2024 20:46	2/29/2024 0:00	5	0.23	4.77 charge
1/30/2024 20:47	2/29/2024 0:00	10	0.36	9.64 charge
1/30/2024 20:48	2/29/2024 0:00	5	0.23	4.77 charge
2/6/2024 20:36	2/29/2024 0:00	5	0.23	4.77 charge
2/6/2024 20:37	2/29/2024 0:00	10	0.36	9.64 charge
2/6/2024 20:38	2/29/2024 0:00	5	0.23	4.77 charge
2/6/2024 20:39	2/29/2024 0:00	5	0.23	4.77 charge
2/6/2024 20:44	2/29/2024 0:00	10	0.36	9.64 charge
2/6/2024 20:48	2/29/2024 0:00	5	0.23	4.77 charge
2/20/2024 20:39	2/29/2024 0:00	5	0.23	4.77 charge
2/20/2024 20:39	2/29/2024 0:00	5	0.23	4.77 charge
2/20/2024 20:40	2/29/2024 0:00	5	0.23	4.77 charge
2/20/2024 20:41	2/29/2024 0:00	5	0.23	4.77 charge
2/20/2024 20:47	2/29/2024 0:00	5	0.23	4.77 charge
2/20/2024 20:50	2/29/2024 0:00	10	0.36	9.64 charge
		<b>381</b>	<b>14.3</b>	<b>366.7</b>

## Total Payout February

**396 14.8 381.2**

## Stripe Payout 2nd April 2024

3/1/2024 19:33	3/6/2024 0:00	11.99	0.41	11.58 charge
3/1/2024 20:41	3/6/2024 0:00	11.99	0.41	11.58 charge

3/5/2024 20:39	3/8/2024 0:00	11.99	0.41	11.58 charge
3/5/2024 20:40	3/8/2024 0:00	11.99	0.41	11.58 charge
		<b>47.96</b>	<b>1.64</b>	<b>46.32</b>

3/16/2024 20:55	3/21/2024 0:00	15	0.49	14.51 charge
3/17/2024 13:59	3/21/2024 0:00	15	0.49	14.51 charge
3/17/2024 16:33	3/21/2024 0:00	15	0.49	14.51 charge
3/17/2024 16:34	3/21/2024 0:00	30	0.88	29.12 charge
3/17/2024 16:40	3/21/2024 0:00	30	0.88	29.12 charge
3/17/2024 16:48	3/21/2024 0:00	40	1.14	38.86 charge
3/17/2024 16:49	3/21/2024 0:00	40	1.14	38.86 charge
3/17/2024 16:52	3/21/2024 0:00	20	0.62	19.38 charge
3/17/2024 16:45	3/21/2024 0:00	165	4.39	160.61 charge
		<b>370</b>	<b>10.5</b>	<b>359.5</b>

3/2/2024 5:48	3/2/2024 5:48	0.04	-0.04 fee
3/6/2024 6:25	3/6/2024 6:25	0.04	-0.04 fee
3/13/2024 6:09	3/13/2024 6:09	0.04	-0.04 fee
		<b>0.12</b>	<b>-0.12</b>

2/27/2024 20:39	3/1/2024 0:00	10	0.36	9.64 charge
2/27/2024 20:40	3/1/2024 0:00	10	0.36	9.64 charge
2/27/2024 20:40	3/1/2024 0:00	10	0.36	9.64 charge
2/27/2024 20:41	3/1/2024 0:00	15	0.49	14.51 charge
2/27/2024 20:41	3/1/2024 0:00	10	0.36	9.64 charge
2/27/2024 20:43	3/1/2024 0:00	5	0.23	4.77 charge
2/27/2024 20:43	3/1/2024 0:00	5	0.23	4.77 charge
2/27/2024 20:43	3/1/2024 0:00	10	0.36	9.64 charge

2/27/2024 20:44	3/1/2024 0:00	5	0.23	4.77 charge
2/27/2024 20:45	3/1/2024 0:00	10	0.36	9.64 charge
2/27/2024 20:47	3/1/2024 0:00	6	0.25	5.75 charge
2/27/2024 20:48	3/1/2024 0:00	5	0.23	4.77 charge
2/27/2024 20:48	3/1/2024 0:00	5	0.23	4.77 charge
3/1/2024 20:33	3/6/2024 0:00	5	0.23	4.77 charge
3/1/2024 20:39	3/6/2024 0:00	5	0.23	4.77 charge
3/1/2024 20:40	3/6/2024 0:00	5	0.23	4.77 charge
3/1/2024 20:40	3/6/2024 0:00	5	0.23	4.77 charge
3/5/2024 20:40	3/8/2024 0:00	10	0.36	9.64 charge
3/5/2024 20:41	3/8/2024 0:00	10	0.36	9.64 charge
3/5/2024 20:46	3/8/2024 0:00	5	0.23	4.77 charge
3/5/2024 20:49	3/8/2024 0:00	10	0.36	9.64 charge
3/12/2024 20:42	3/15/2024 0:00	10	0.36	9.64 charge
3/12/2024 20:42	3/15/2024 0:00	5	0.23	4.77 charge
3/12/2024 20:43	3/15/2024 0:00	5	0.23	4.77 charge
3/12/2024 20:44	3/15/2024 0:00	5	0.23	4.77 charge
3/12/2024 20:50	3/15/2024 0:00	5	0.23	4.77 charge
3/12/2024 20:54	3/15/2024 0:00	10	0.36	9.64 charge
3/19/2024 20:35	3/22/2024 0:00	5	0.23	4.77 charge
3/19/2024 20:36	3/22/2024 0:00	10	0.36	9.64 charge
3/26/2024 20:44	4/2/2024 1:00	5	0.23	4.77 charge
3/26/2024 20:46	4/2/2024 1:00	6	0.25	5.75 charge
3/12/2024 20:58	3/15/2024 0:00	15	0.61	14.39 charge
3/19/2024 20:50	3/22/2024 0:00	11	0.38	10.62 charge
3/26/2024 20:51	4/2/2024 1:00	52	1.45	50.55 charge
2/27/2024 20:59	3/1/2024 0:00	20	0.62	19.38 charge
2/27/2024 21:00	3/1/2024 0:00	19.15	0.6	18.55 charge
3/5/2024 20:57	3/8/2024 0:00	40	1.28	38.72 charge
		<b>384.2</b>	<b>13.9</b>	<b>370.2</b>

3/1/2024 20:45

3/6/2024 0:00	6.2	0.36	5.84	charge
	<b>6.2</b>	<b>0.36</b>	<b>5.84</b>	

**2nd April Total Payouts**

<b>808.3</b>	<b>26.6</b>	<b>781.7</b>
--------------	-------------	--------------

[illegible]

Payment for Stripe App  
Payment for Stripe App  
Payment for Stripe App  
Payment for Stripe App  
Payment for Stripe App

Radar (2023-04-18): Radar for Fraud Teams  
Radar (2023-04-23): Radar for Fraud Teams  
Radar (2023-04-24): Radar for Fraud Teams

Spring Weekend Retreat 2023: Helen Barrett  
Spring Weekend Retreat 2023: Jackie Thompson  
Spring Weekend Retreat 2023: Julie Bolton  
Spring Weekend Retreat 2023: Michael Buick  
Spring Weekend Retreat 2023: Rebecca Stallard  
Spring Weekend Retreat 2023: Sthiradeva

---

Study  
Study

Day Retreats  
Day Retreats

Study

Donation: George Whitehouse Study

- Sangha Nights
- Sangha Nights
- Sangha Nights
- Sangha Nights
- Sangha Nights
- Sangha Nights
- Sangha Nights
- Sangha Nights
- Sangha Nights
- Sangha Nights
- Sangha Nights
- Sangha Nights
- Sangha Nights
- Sangha Nights
- Sangha Nights
- Sangha Nights
- Sangha Nights
- Sangha Nights
- Sangha Nights

Day Retreats

Day Retreats

Sangha Nights  
Sangha Nights  
Sangha Nights  
Sangha Nights  
Sangha Nights  
Sangha Nights  
Sangha Nights  
Sangha Nights  
Sangha Nights  
Sangha Nights

Fundraising  
Fundraising  
Fundraising  
Fundraising  
Fundraising  
Fundraising  
Fundraising

Administration  
Administration  
Administration  
Administration  
Administration  
Administration  
Administration





Sangha Nights  
Sangha Nights  
Sangha Nights  
Sangha Nights  
Sangha Nights  
Sangha Nights

Sangha Nights  
Sangha Nights  
Sangha Nights  
Sangha Nights  
Sangha Nights  
Sangha Nights

Day Retreats  
Donation: Tanya Berman - towards womens day retreat  
Donation: for womens day retreat

Day Retreats  
Day Retreats  
Day Retreats

Radar (2023-05-30): Radar for Fraud Teams  
Radar (2023-06-05): Radar for Fraud Teams  
Radar (2023-06-06): Radar for Fraud Teams  
Radar (2023-06-07): Radar for Fraud Teams  
Radar (2023-06-13): Radar for Fraud Teams  
Radar (2023-06-14): Radar for Fraud Teams  
Radar (2023-06-17): Radar for Fraud Teams  
Radar (2023-06-20): Radar for Fraud Teams

Administration  
Administration  
Administration  
Administration  
Administration  
Administration  
Administration  
Administration

---

Donation: Tim Hayler  
Payment for Stripe App  
Payment for Stripe App  
Payment for Stripe App  
Payment for Stripe App

One-off  
Sangha Nights  
Sangha Nights  
Sangha Nights  
Sangha Nights

Payment for Stripe App  
Payment for Stripe App  
Payment for Stripe App  
Payment for Stripe App  
Payment for Stripe App  
Payment for Stripe App  
Payment for Stripe App  
Payment for Stripe App  
Payment for Stripe App  
Payment for Stripe App  
Payment for Stripe App  
Payment for Stripe App  
Payment for Stripe App  
Sangha Nights cash  
Sangha Nights cash  
Sangha Nights cash  
Sangha Nights cash

Sangha Nights  
Sangha Nights  
Sangha Nights  
Sangha Nights  
Sangha Nights  
Sangha Nights  
Sangha Nights  
Sangha Nights  
Sangha Nights  
Sangha Nights  
Sangha Nights  
Sangha Nights  
Sangha Nights  
Sangha Nights  
Sangha Nights  
Sangha Nights  
Sangha Nights  
Sangha Nights

Radar (2023-06-27): Radar for Fraud Teams  
Radar (2023-06-28): Radar for Fraud Teams  
Radar (2023-07-04): Radar for Fraud Teams  
Radar (2023-07-23): Radar for Fraud Teams

Administration  
Administration  
Administration  
Administration

---

Radar (2023-08-14): Radar for Fraud Teams  
Radar (2023-08-15): Radar for Fraud Teams  
Radar (2023-08-16): Radar for Fraud Teams

Administration  
Administration  
Administration

Donation: Anonymous  
Donation: Jenifer Zeligs  
Donation: Prajnaketu

Payment for Stripe App  
Payment for Stripe App  
Payment for Stripe App  
Payment for Stripe App  
Payment for Stripe App  
Payment for Stripe App  
Payment for Stripe App  
Payment for Stripe App  
Payment for Stripe App  
Payment for Stripe App  
Payment for Stripe App  
Payment for Stripe App  
Payment for Stripe App  
Payment for Stripe App  
Payment for Stripe App  
Payment for Stripe App  
Payment for Stripe App  
Payment for Stripe App  
Sangha Nights cash  
Sangha Nights cash 15.  
Sangha Nights cash 22.  
Sangha Nights cash 8.8

Application fee refund for ch_3NITOtHIGCMXL2Rx19Uv0hi	Administration
Application fee refund for ch_3NITPWHIGCMXL2Rx1xSI4N	Administration
REFUND FOR CHARGE (Payment for Stripe App)	Administration
REFUND FOR CHARGE (Payment for Stripe App)	Administration
Radar (2023-08-29): Radar for Fraud Teams	Administration
Radar (2023-09-05): Radar for Fraud Teams	Administration
Radar (2023-09-12): Radar for Fraud Teams	Administration
Radar (2023-09-13): Radar for Fraud Teams	Administration
Radar (2023-09-19): Radar for Fraud Teams	Administration
Radar (2023-09-23): Radar for Fraud Teams	Administration
Radar (2023-09-24): Radar for Fraud Teams	Administration

	One-off
	One-off
	One-off
	One-off
	One-off
	One-off
	One-off
Donation: Tim Hayler	One-off
Donation: Tim Hayler	One-off

Payment for Stripe App	Sangha Nights
Payment for Stripe App	Sangha Nights
Payment for Stripe App	Sangha Nights
Sangha Nights cash 29.8.23	Sangha Nights
Payment for Stripe App	Sangha Nights
Payment for Stripe App	Sangha Nights
Payment for Stripe App	Sangha Nights
Payment for Stripe App	Sangha Nights



Payment for Stripe App  
Payment for Stripe App  
Winter Weekend Retreat 2023: Jane Lomax  
Winter Weekend Retreat 2023: Tessa Lomax

---

Weekend Retreats  
Weekend Retreats  
Weekend Retreats  
Weekend Retreats

Radar (2023-09-27): Radar for Fraud Teams  
Radar (2023-09-28): Radar for Fraud Teams  
Radar (2023-09-29): Radar for Fraud Teams  
Radar (2023-10-01): Radar for Fraud Teams  
Radar (2023-10-03): Radar for Fraud Teams  
Radar (2023-10-09): Radar for Fraud Teams  
Radar (2023-10-10): Radar for Fraud Teams  
Radar (2023-10-11): Radar for Fraud Teams  
Radar (2023-10-15): Radar for Fraud Teams  
Radar (2023-10-16): Radar for Fraud Teams  
Radar (2023-10-17): Radar for Fraud Teams  
Radar (2023-10-19): Radar for Fraud Teams  
Terminal (2023-10-03): Tap on Mobile- Per Auth Fee  
Terminal (2023-10-06): Tap on Mobile- Per Auth Fee

Administration  
Administration  
Administration  
Administration  
Administration  
Administration  
Administration  
Administration  
Administration  
Administration  
Administration  
Administration  
Administration  
Administration  
Administration

Donation: Dhana  
Donation: Miri Baum  
Donation: Tim Hayler

One-off  
One-off  
One-off  
One-off



Payment for Stripe App  
Payment for Stripe App  
Payment for Stripe App  
Payment for Stripe App  
Payment for Stripe App  
Payment for Stripe App  
Payment for Stripe App

Sangha Nights  
Sangha Nights  
Sangha Nights  
Sangha Nights  
Sangha Nights  
Sangha Nights  
Sangha Nights

Winter Weekend Retreat 2023: Clair Johnson  
Winter Weekend Retreat 2023: Danni Hopkins  
Winter Weekend Retreat 2023: David Kay  
Winter Weekend Retreat 2023: Ellie Pearce  
Winter Weekend Retreat 2023: Gary Hockey-Morley  
Winter Weekend Retreat 2023: Kay Nias  
Winter Weekend Retreat 2023: Philippa Masters  
Winter Weekend Retreat 2023: Simon  
Winter Weekend Retreat 2023: Tim

Weekend Retreats  
Weekend Retreats  
Weekend Retreats  
Weekend Retreats  
Weekend Retreats  
Weekend Retreats  
Weekend Retreats  
Weekend Retreats  
Weekend Retreats  
Weekend Retreats  
Weekend Retreats  
Weekend Retreats

OYB cash

Young Buddhists

---

Radar (2023-10-27): Radar for Fraud Teams  
Radar (2023-10-31): Radar for Fraud Teams

Administration  
Administration

Radar (2023-11-07): Radar for Fraud Teams	Administration
Radar (2023-11-11): Radar for Fraud Teams	Administration
Radar (2023-11-13): Radar for Fraud Teams	Administration
Radar (2023-11-14): Radar for Fraud Teams	Administration
Radar (2023-11-17): Radar for Fraud Teams	Administration
Radar (2023-11-24): Radar for Fraud Teams	Administration
Radar (2023-11-25): Radar for Fraud Teams	Administration

Payment for Stripe App	Day Retreats
Payment for Stripe App	Day Retreats
Payment for Stripe App	Day Retreats
Payment for Stripe App	Day Retreats
Payment for Stripe App	Day Retreats
Payment for Stripe App	Day Retreats
	Day Retreats
	Day Retreats
	Day Retreats
	Day Retreats
Payment for Stripe App	Day Retreats
	Day Retreats
	Day Retreats
Study cash 11.11.23	Day Retreats

Payment for Stripe App	One-off
	One-off
Donation: Anonymous	One-off
Donation: Tim Hayler	One-off

[illegible]

Payment for Stripe App  
Payment for Stripe App  
Payment for Stripe App  
Payment for Stripe App  
Payment for Stripe App  
Payment for Stripe App

[illegible]

Winter Weekend Retreat 2023: Flora Botsford  
Winter Weekend Retreat 2023: Andras Andras  
Winter Weekend Retreat 2023: Jackie Thompson

Weekend Retreats  
Weekend Retreats  
Weekend Retreats

OYB cash

Young Buddhists

---

Radar (2023-11-28): Radar for Fraud Teams  
Radar (2023-11-29): Radar for Fraud Teams  
Radar (2023-12-01): Radar for Fraud Teams  
Radar (2023-12-02): Radar for Fraud Teams  
Radar (2023-12-05): Radar for Fraud Teams  
Radar (2023-12-06): Radar for Fraud Teams  
Radar (2023-12-07): Radar for Fraud Teams  
Radar (2023-12-10): Radar for Fraud Teams  
Radar (2023-12-11): Radar for Fraud Teams  
Radar (2023-12-12): Radar for Fraud Teams  
Radar (2023-12-15): Radar for Fraud Teams  
Radar (2023-12-17): Radar for Fraud Teams  
Radar (2023-12-18): Radar for Fraud Teams  
Radar (2023-12-19): Radar for Fraud Teams  
Terminal (2023-12-05): Tap on Mobile- Per Auth Fee

Administration  
Administration  
Administration  
Administration  
Administration  
Administration  
Administration  
Administration  
Administration  
Administration  
Administration  
Administration  
Administration  
Administration  
Administration

Clair Johnson (study)  
Donation: David Kay

Day Retreats  
Day Retreats

Donation: Dhana  
Donation: Hugh Davies  
Donation: Ravi Puri  
Donation: Rory Fryer (study)  
Donation: Tim Hayler (study)

Day Retreats  
Day Retreats  
Day Retreats  
Day Retreats  
Day Retreats

[illegible][illegible]

Payment for Stripe App  
Payment for Stripe App  
Payment for Stripe App  
Payment for Stripe App  
Payment for Stripe App

Sangha Nights  
Sangha Nights  
Sangha Nights  
Sangha Nights  
Sangha Nights

REFUND FOR CHARGE (Winter Weekend Retreat 2023: Rc	Weekend Reteats
Winter Weekend Retreat 2023 Padmakumara P	Weekend Retreats
Winter weekend retreat 2023: Christopher Woodcock-Ste	Weekend Retreats
Winter Weekend Retreat 2023: Claire	Weekend Retreats
Winter Weekend Retreat 2023: Joely Hayes	Weekend Retreats
Winter Weekend Retreat 2023: lesley wilson	Weekend Retreats
Winter Weekend Retreat 2023: Michael Buick	Weekend Retreats
Winter Weekend Retreat 2023: Padmakumara	Weekend Retreats
Winter Weekend Retreat 2023: Paul Cronje-Jarvis	Weekend Retreats
Winter Weekend Retreat 2023: Peter Whetton	Weekend Retreats
Winter Weekend Retreat 2023: Rose Perkins	Weekend Retreats
Winter Weekend Retreat 2023: Sthiradeva	Weekend Retreats
Winter Weekend Retreat 2023: Tanya Berman	Weekend Retreats
Winter weekend retreat 2023: Tim Hayler	Weekend Retreats
Winter Weekend Retreat 2023Peter Whetton	Weekend Retreats

Young Buddhists cash

Young Buddhists

---

One-off Giving

## Radar (2024-01-25): Radar for Fraud Teams

## Operating Costs

Sangha Night cash 16/1/24

Sangha Night cash 23/1/24

## Payment for Stripe App

## Payment for Stripe App

### Payment for Stripe App

## Payment for Stripe App

## Payment for Stripe App

## Payment for Stripe App

## Payment for Stripe App

## Sangha Nights

## Sangha Nights

## Sangha Nights

## Sangha Nights

## Sangha Nights

## Sangha Nights

## Sangha Nights

## Sangha Nights

## Sangha Nights

## Sangha Nights

## Sangha Nights

## Sangha Nights

## Sangha Nights

## Sangha Nights

## Sangha Nights

## Sangha Nights

## Sangha Nights

## Sangha Nights

## Sangha Nights

## Sangha Nights

## Sangha Nights

## Sangha Nights

## Sangha Nights

## Sangha Nights

## Sangha Nights

## Sangha Nights

Sangha Nights  
Sangha Nights

One-off

[illegible]

Sangha Night cash 6/2/24

## Sangha Night

## Sangha Night

## Sangha Night

## Sangha Night

## Sangha Night

## Sangha Night

## Sangha Night

## Sangha Night

## Sangha Night

## Sangha Night

## Sangha Night

## Sangha Night

## Cyberloka purchase

## Bookshop

Cyberloka purchase  
Cyberloka purchase

Bookshop  
Bookshop

[illegible][illegible]

Radar (2024-03-01): Radar for Fraud Teams  
Radar (2024-03-05): Radar for Fraud Teams  
Radar (2024-03-12): Radar for Fraud Teams

Administration  
Administration  
Administration

[illegible][illegible]



Young Buddhists 1/3/24 Cash

Young Buddhists





Strip

Donation Date	Payment Date	Gross	Fee	Net
	5/31/2023 1:00	-0.04	0	-0.04
	5/31/2023 1:00	-0.02	0	-0.02
	5/31/2023 1:00	-0.04	0	-0.04
	5/31/2023 1:00	-0.02	0	-0.02
	5/31/2023 1:00	-0.04	0	-0.04
	5/31/2023 1:00	-0.02	0	-0.02
	5/31/2023 1:00	-0.02	0	-0.02
	6/30/2023 1:00	-0.08	0	-0.08
	6/30/2023 1:00	-0.02	0	-0.02
	6/30/2023 1:00	-0.02	0	-0.02
	6/30/2023 1:00	-0.04	0	-0.04
	6/30/2023 1:00	-0.02	0	-0.02
	6/30/2023 1:00	-0.04	0	-0.04
		-0.06	0	-0.06
		-0.06	0	-0.06
	7/31/2023 1:00	-0.08	0	-0.08
	7/31/2023 1:00	-0.02	0	-0.02
	7/31/2023 1:00	-0.04	0	-0.04
	7/31/2023 1:00	-0.02	0	-0.02
	8/31/2023 1:00	-0.02	0	-0.02
	8/31/2023 1:00	-0.06	0	-0.06
	8/31/2023 1:00	-0.04	0	-0.04
9/1/2023 10:12	10/2/2023 1:00	0.01	0	0.01
9/1/2023 10:13	10/2/2023 1:00	0.01	0	0.01
9/1/2023 10:12	10/2/2023 1:00	-1	0	-1
9/1/2023 10:13	10/2/2023 1:00	-1	0	-1
8/30/2023 9:00	10/2/2023 1:00	-0.04	0	-0.04
9/6/2023 8:58	10/2/2023 1:00	-0.02	0	-0.02
9/13/2023 7:02	10/2/2023 1:00	-0.02	0	-0.02
9/14/2023 6:44	10/2/2023 1:00	-0.02	0	-0.02
9/20/2023 6:55	10/2/2023 1:00	-0.04	0	-0.04
9/24/2023 6:49	10/2/2023 1:00	-0.02	0	-0.02
9/25/2023 6:40	10/2/2023 1:00	-0.04	0	-0.04
10/4/2023 18:50	10/31/2023 0:00	-0.3	0	-0.3
10/7/2023 18:49	10/31/2023 0:00	-0.1	0	-0.1

10/16/2023 6:42	10/31/2023 0:00	-0.1	0	-0.1
10/12/2023 6:56	10/31/2023 0:00	-0.08	0	-0.08
9/28/2023 6:53	10/31/2023 0:00	-0.06	0	-0.06
10/10/2023 6:53	10/31/2023 0:00	-0.06	0	-0.06
10/11/2023 6:50	10/31/2023 0:00	-0.06	0	-0.06
10/20/2023 6:51	10/31/2023 0:00	-0.06	0	-0.06
9/29/2023 7:02	10/31/2023 0:00	-0.04	0	-0.04
9/30/2023 7:05	10/31/2023 0:00	-0.04	0	-0.04
10/2/2023 6:44	10/31/2023 0:00	-0.02	0	-0.02
10/4/2023 10:19	10/31/2023 0:00	-0.02	0	-0.02
10/17/2023 6:52	10/31/2023 0:00	-0.02	0	-0.02
10/18/2023 6:51	10/31/2023 0:00	-0.02	0	-0.02
10/27/2023 20:56	11/30/2023 0:00	-0.04	0	-0.04
10/28/2023 6:53	11/30/2023 0:00	-0.04	0	-0.04
11/1/2023 5:57	11/30/2023 0:00	-0.04	0	-0.04
11/8/2023 6:01	11/30/2023 0:00	-0.04	0	-0.04
11/12/2023 5:43	11/30/2023 0:00	-0.04	0	-0.04
11/14/2023 5:45	11/30/2023 0:00	-0.02	0	-0.02
11/15/2023 5:35	11/30/2023 0:00	-0.04	0	-0.04
11/18/2023 7:48	11/30/2023 0:00	-0.02	0	-0.02
11/25/2023 5:53	11/30/2023 0:00	-0.04	0	-0.04
11/29/2023 5:38	1/2/2024 0:00	-0.06	0	-0.06
11/30/2023 5:49	1/2/2024 0:00	-0.02	0	-0.02
12/2/2023 6:06	1/2/2024 0:00	-0.04	0	-0.04
12/3/2023 6:02	1/2/2024 0:00	-0.04	0	-0.04
12/6/2023 5:43	1/2/2024 0:00	-0.14	0	-0.14
12/7/2023 6:00	1/2/2024 0:00	-0.12	0	-0.12
12/8/2023 5:58	1/2/2024 0:00	-0.04	0	-0.04
12/11/2023 6:14	1/2/2024 0:00	-0.06	0	-0.06
12/12/2023 5:54	1/2/2024 0:00	-0.02	0	-0.02
12/13/2023 5:40	1/2/2024 0:00	-0.02	0	-0.02
12/16/2023 8:02	1/2/2024 0:00	-0.1	0	-0.1
12/18/2023 5:57	1/2/2024 0:00	-0.04	0	-0.04
12/19/2023 5:47	1/2/2024 0:00	-0.08	0	-0.08
12/20/2023 8:53	1/2/2024 0:00	-0.02	0	-0.02
12/6/2023 17:33	1/2/2024 0:00	-0.1	0	-0.1
3/2/2024 5:48	3/2/2024 5:48		0.04	-0.04

3/6/2024 6:25	3/6/2024 6:25	0.04	-0.04
3/13/2024 6:09	3/13/2024 6:09	0.04	-0.04
	6/30/2023 1:00	12.99	0.43 12.56
	6/30/2023 1:00	12.99	0.43 12.56
	6/30/2023 1:00	12.99	0.43 12.56
	6/30/2023 1:00	12.99	0.43 12.56
	6/30/2023 1:00	12.99	0.43 12.56
		12.99	0.43 12.56
3/1/2024 19:33	3/6/2024 0:00	11.99	0.41 11.58
3/1/2024 20:41	3/6/2024 0:00	11.99	0.41 11.58
3/5/2024 20:39	3/8/2024 0:00	11.99	0.41 11.58
3/5/2024 20:40	3/8/2024 0:00	11.99	0.41 11.58
	5/31/2023 1:00	30	0.88 29.12
	5/31/2023 1:00	30	0.88 29.12
	5/31/2023 1:00	40	1.14 38.86
	5/31/2023 1:00	50	0.95 49.05
	6/30/2023 1:00	95	2.77 92.23
	6/30/2023 1:00	20	0.5 19.5
	6/30/2023 1:00	10	0.35 9.65
10/29/2023 13:52	11/30/2023 0:00	10	0.36 9.64
10/29/2023 13:53	11/30/2023 0:00	10	0.36 9.64
10/29/2023 13:53	11/30/2023 0:00	5	0.23 4.77
10/29/2023 13:53	11/30/2023 0:00	20	0.62 19.38
10/29/2023 13:54	11/30/2023 0:00	10	0.36 9.64
10/29/2023 13:57	11/30/2023 0:00	10	0.36 9.64
10/29/2023 14:05	11/30/2023 0:00	10	0.36 9.64
10/31/2023 20:39	11/30/2023 0:00	7.5	0.3 7.2
10/31/2023 20:41	11/30/2023 0:00	10	0.36 9.64
10/31/2023 20:42	11/30/2023 0:00	5	0.23 4.77
10/31/2023 20:47	11/30/2023 0:00	5	0.23 4.77
11/21/2023 20:55	11/30/2023 0:00	40	1.14 38.86
11/26/2023 5:44	11/30/2023 0:00	30	1.01 28.99
12/18/2023 11:40	1/2/2024 0:00	40.77	0.81 39.96
12/11/2023 17:29	1/2/2024 0:00	71.2	1.27 69.93
12/19/2023 19:23	1/2/2024 0:00	10	0.35 9.65
12/12/2023 12:42	1/2/2024 0:00	30	0.65 29.35
12/2/2023 9:07	1/2/2024 0:00	21	0.52 20.48

12/10/2023 16:52	1/2/2024 0:00	30.63	0.66	29.97
12/6/2023 11:06	1/2/2024 0:00	20	0.5	19.5
3/16/2024 20:55	3/21/2024 0:00	15	0.49	14.51
3/17/2024 13:59	3/21/2024 0:00	15	0.49	14.51
3/17/2024 16:33	3/21/2024 0:00	15	0.49	14.51
3/17/2024 16:34	3/21/2024 0:00	30	0.88	29.12
3/17/2024 16:40	3/21/2024 0:00	30	0.88	29.12
3/17/2024 16:48	3/21/2024 0:00	40	1.14	38.86
3/17/2024 16:49	3/21/2024 0:00	40	1.14	38.86
3/17/2024 16:52	3/21/2024 0:00	20	0.62	19.38
3/17/2024 16:45	3/21/2024 0:00	165	4.39	160.61
		20	0.5	19.5
	8/31/2023 1:00	5.27	0.28	4.99
	8/31/2023 1:00	203.04	6.8	196.24
	8/31/2023 1:00	2	0.23	1.77
9/26/2023 20:40	10/2/2023 1:00	10	0.36	9.64
9/26/2023 20:41	10/2/2023 1:00	5	0.23	4.77
9/26/2023 20:41	10/2/2023 1:00	5	0.23	4.77
9/26/2023 20:47	10/2/2023 1:00	5	0.23	4.77
9/26/2023 20:48	10/2/2023 1:00	5	0.23	4.77
9/26/2023 20:49	10/2/2023 1:00	5	0.23	4.77
9/26/2023 20:49	10/2/2023 1:00	5	0.23	4.77
9/12/2023 17:39	10/2/2023 1:00	10	0.35	9.65
9/23/2023 16:42	10/2/2023 1:00	20	0.5	19.5
10/19/2023 15:50	10/31/2023 0:00	8.32	0.32	8
10/3/2023 22:23	10/31/2023 0:00	17	0.46	16.54
10/17/2023 16:46	10/31/2023 0:00	10.34	0.36	9.98
10/10/2023 21:00	10/31/2023 0:00	22.35	0.81	21.54
11/7/2023 20:45	11/30/2023 0:00	35	1.15	33.85
11/21/2023 20:48	11/30/2023 0:00	25	0.75	24.25
11/11/2023 17:48	11/30/2023 0:00	253.75	4.01	249.74
10/31/2023 19:59	11/30/2023 0:00	10	0.35	9.65
2/12/2024 10:01	2/29/2024 0:00	15	0.43	14.57
1/25/2024 11:08	1/30/2024 0:00	50	1.55	48.45
1/26/2024 5:57	1/26/2024 5:57	0	0.02	-0.02
2/9/2024 20:32	2/29/2024 0:00	10	0.51	9.49
2/9/2024 20:32	2/29/2024 0:00	2	0.15	1.85
2/9/2024 20:33	2/29/2024 0:00	5	0.23	4.77
2/9/2024 20:34	2/29/2024 0:00	5	0.23	4.77
2/9/2024 20:34	2/29/2024 0:00	5	0.23	4.77
2/9/2024 20:38	2/29/2024 0:00	5	0.23	4.77
2/11/2024 14:11	2/29/2024 0:00	10	0.36	9.64

2/11/2024 14:12	2/29/2024 0:00	10	0.36	9.64
2/11/2024 14:12	2/29/2024 0:00	20	0.62	19.38
2/13/2024 20:33	2/29/2024 0:00	5	0.23	4.77
2/13/2024 20:33	2/29/2024 0:00	10	0.36	9.64
2/13/2024 20:34	2/29/2024 0:00	10	0.36	9.64
2/13/2024 20:34	2/29/2024 0:00	10	0.36	9.64
2/13/2024 20:36	2/29/2024 0:00	5	0.23	4.77
2/13/2024 20:39	2/29/2024 0:00	5	0.23	4.77
2/13/2024 20:41	2/29/2024 0:00	5	0.23	4.77
2/13/2024 20:45	2/29/2024 0:00	10	0.36	9.64
2/13/2024 6:12	2/29/2024 0:00	-0.02	0	-0.02
2/20/2024 20:59	2/29/2024 0:00	2	0.15	1.85
1/30/2024 20:56	2/29/2024 0:00	50	1.4	48.6
2/6/2024 20:56	2/29/2024 0:00	57	1.58	55.42
1/30/2024 20:37	2/29/2024 0:00	5	0.23	4.77
1/30/2024 20:39	2/29/2024 0:00	5	0.23	4.77
1/30/2024 20:40	2/29/2024 0:00	10	0.36	9.64
1/30/2024 20:41	2/29/2024 0:00	5	0.31	4.69
1/30/2024 20:42	2/29/2024 0:00	10	0.36	9.64
1/30/2024 20:43	2/29/2024 0:00	5	0.23	4.77
1/30/2024 20:44	2/29/2024 0:00	5	0.23	4.77
1/30/2024 20:46	2/29/2024 0:00	5	0.23	4.77
1/30/2024 20:47	2/29/2024 0:00	10	0.36	9.64
1/30/2024 20:48	2/29/2024 0:00	5	0.23	4.77
2/6/2024 20:36	2/29/2024 0:00	5	0.23	4.77
2/6/2024 20:37	2/29/2024 0:00	10	0.36	9.64
2/6/2024 20:38	2/29/2024 0:00	5	0.23	4.77
2/6/2024 20:39	2/29/2024 0:00	5	0.23	4.77
2/6/2024 20:44	2/29/2024 0:00	10	0.36	9.64
2/6/2024 20:48	2/29/2024 0:00	5	0.23	4.77
2/20/2024 20:39	2/29/2024 0:00	5	0.23	4.77
2/20/2024 20:39	2/29/2024 0:00	5	0.23	4.77
2/20/2024 20:40	2/29/2024 0:00	5	0.23	4.77
2/20/2024 20:41	2/29/2024 0:00	5	0.23	4.77
2/20/2024 20:47	2/29/2024 0:00	5	0.23	4.77
2/20/2024 20:50	2/29/2024 0:00	10	0.36	9.64
	6/30/2023 1:00	5	0.28	4.72
	6/30/2023 1:00	10.34	0.36	9.98
	6/30/2023 1:00	5	0.28	4.72
	6/30/2023 1:00	10	0.35	9.65
	6/30/2023 1:00	10	0.35	9.65
	6/30/2023 1:00	5	0.28	4.72
	6/30/2023 1:00	15	0.43	14.57
	6/30/2023 1:00	10	0.35	9.65
	6/30/2023 1:00	5	0.23	4.77
	6/30/2023 1:00	5	0.23	4.77

6/30/2023 1:00	10	0.36	9.64
6/30/2023 1:00	5	0.23	4.77
6/30/2023 1:00	10	0.36	9.64
6/30/2023 1:00	5	0.23	4.77
6/30/2023 1:00	5	0.23	4.77
6/30/2023 1:00	5	0.23	4.77
6/30/2023 1:00	5	0.23	4.77
6/30/2023 1:00	20	0.62	19.38
6/30/2023 1:00	5	0.23	4.77
6/30/2023 1:00	10	0.36	9.64
6/30/2023 1:00	12	0.52	11.48
6/30/2023 1:00	15	0.61	14.39
6/30/2023 1:00	25	0.88	24.12
7/31/2023 1:00	5	0.23	4.77
7/31/2023 1:00	10	0.36	9.64
7/31/2023 1:00	5	0.23	4.77
7/31/2023 1:00	5	0.23	4.77
7/31/2023 1:00	5	0.23	4.77
7/31/2023 1:00	5	0.23	4.77
7/31/2023 1:00	10	0.36	9.64
7/31/2023 1:00	5	0.23	4.77
7/31/2023 1:00	5	0.23	4.77
7/31/2023 1:00	5	0.23	4.77
7/31/2023 1:00	5	0.23	4.77
7/31/2023 1:00	5	0.23	4.77
7/31/2023 1:00	5	0.23	4.77
7/31/2023 1:00	5	0.23	4.77
7/31/2023 1:00	10	0.36	9.64
7/31/2023 1:00	3	0.18	2.82
7/31/2023 1:00	5	0.23	4.77
7/31/2023 1:00	5	0.23	4.77
7/31/2023 1:00	10	0.36	9.64
7/31/2023 1:00	20	0.5	19.5
7/31/2023 1:00	22	0.79	21.21
7/31/2023 1:00	10	0.36	9.64
7/31/2023 1:00	45	1.27	43.73
8/31/2023 1:00	10	0.36	9.64
8/31/2023 1:00	5	0.23	4.77
8/31/2023 1:00	5	0.23	4.77
8/31/2023 1:00	5	0.23	4.77
8/31/2023 1:00	5	0.23	4.77
8/31/2023 1:00	5	0.23	4.77
8/31/2023 1:00	10	0.36	9.64
8/31/2023 1:00	5	0.23	4.77
8/31/2023 1:00	5	0.23	4.77
8/31/2023 1:00	5	0.23	4.77

	8/31/2023 1:00	20	0.92	19.08
	8/31/2023 1:00	5	0.23	4.77
	8/31/2023 1:00	5	0.23	4.77
	8/31/2023 1:00	5	0.23	4.77
	8/31/2023 1:00	10	0.36	9.64
	8/31/2023 1:00	5	0.23	4.77
	8/31/2023 1:00	5	0.23	4.77
8/29/2023 20:06	10/2/2023 1:00	5	0.23	4.77
8/29/2023 20:07	10/2/2023 1:00	5	0.23	4.77
8/29/2023 20:08	10/2/2023 1:00	5	0.23	4.77
8/29/2023 20:25	10/2/2023 1:00	15	0.61	14.39
9/1/2023 10:12	10/2/2023 1:00	1	0.12	0.88
9/1/2023 10:13	10/2/2023 1:00	1	0.12	0.88
9/2/2023 16:22	10/2/2023 1:00	20	0.62	19.38
9/2/2023 16:41	10/2/2023 1:00	10	0.36	9.64
9/5/2023 20:40	10/2/2023 1:00	10	0.36	9.64
9/5/2023 20:43	10/2/2023 1:00	5	0.23	4.77
9/5/2023 20:50	10/2/2023 1:00	5	0.23	4.77
9/5/2023 20:51	10/2/2023 1:00	5	0.23	4.77
9/5/2023 20:52	10/2/2023 1:00	5	0.23	4.77
9/5/2023 21:21	10/2/2023 1:00	26.57	0.6	25.97
9/10/2023 14:11	10/2/2023 1:00	20	0.62	19.38
9/10/2023 16:08	10/2/2023 1:00	37	1.06	35.94
9/12/2023 20:40	10/2/2023 1:00	5	0.23	4.77
9/12/2023 20:40	10/2/2023 1:00	5	0.23	4.77
9/12/2023 20:41	10/2/2023 1:00	5	0.23	4.77
9/12/2023 20:42	10/2/2023 1:00	10	0.36	9.64
9/12/2023 20:43	10/2/2023 1:00	5	0.23	4.77
9/12/2023 20:44	10/2/2023 1:00	5	0.23	4.77
9/12/2023 20:46	10/2/2023 1:00	5	0.23	4.77
9/12/2023 20:54	10/2/2023 1:00	5	0.23	4.77
9/13/2023 9:54	10/2/2023 1:00	15.42	0.43	14.99
9/19/2023 20:41	10/2/2023 1:00	5	0.23	4.77
9/19/2023 20:41	10/2/2023 1:00	5	0.23	4.77
9/19/2023 20:42	10/2/2023 1:00	5	0.23	4.77
9/19/2023 20:47	10/2/2023 1:00	5	0.23	4.77
9/19/2023 20:58	10/2/2023 1:00	26	0.9	25.1
9/24/2023 16:19	10/2/2023 1:00	25	1.13	23.87
9/24/2023 16:20	10/2/2023 1:00	15	0.49	14.51
9/24/2023 16:20	10/2/2023 1:00	10	0.36	9.64
9/24/2023 16:20	10/2/2023 1:00	10	0.36	9.64
9/24/2023 16:22	10/2/2023 1:00	10	0.36	9.64
9/24/2023 16:23	10/2/2023 1:00	10	0.36	9.64
9/24/2023 16:29	10/2/2023 1:00	15	0.49	14.51
9/24/2023 16:33	10/2/2023 1:00	10	0.36	9.64
9/24/2023 16:34	10/2/2023 1:00	10	0.36	9.64

9/24/2023 16:36	10/2/2023 1:00	10	0.36	9.64
10/3/2023 20:21	10/31/2023 0:00	1	0.12	0.88
9/29/2023 20:35	10/31/2023 0:00	4	0.21	3.79
10/10/2023 20:43	10/31/2023 0:00	4	0.21	3.79
9/28/2023 9:51	10/31/2023 0:00	5	0.34	4.66
9/29/2023 20:49	10/31/2023 0:00	5	0.23	4.77
10/3/2023 20:25	10/31/2023 0:00	5	0.23	4.77
10/3/2023 20:27	10/31/2023 0:00	5	0.23	4.77
10/3/2023 20:27	10/31/2023 0:00	5	0.23	4.77
10/3/2023 20:29	10/31/2023 0:00	5	0.23	4.77
10/10/2023 20:40	10/31/2023 0:00	5	0.23	4.77
10/10/2023 20:41	10/31/2023 0:00	5	0.23	4.77
10/10/2023 20:53	10/31/2023 0:00	5	0.23	4.77
10/10/2023 20:54	10/31/2023 0:00	5	0.23	4.77
10/17/2023 20:35	10/31/2023 0:00	5	0.23	4.77
10/17/2023 20:36	10/31/2023 0:00	5	0.23	4.77
10/17/2023 20:37	10/31/2023 0:00	5	0.23	4.77
10/17/2023 20:38	10/31/2023 0:00	5	0.23	4.77
10/17/2023 20:38	10/31/2023 0:00	5	0.23	4.77
10/17/2023 20:39	10/31/2023 0:00	5	0.23	4.77
10/17/2023 20:40	10/31/2023 0:00	5	0.23	4.77
10/17/2023 20:41	10/31/2023 0:00	5	0.23	4.77
10/17/2023 20:52	10/31/2023 0:00	5	0.23	4.77
10/24/2023 20:40	10/31/2023 0:00	5	0.23	4.77
10/24/2023 20:41	10/31/2023 0:00	5	0.23	4.77
10/24/2023 20:43	10/31/2023 0:00	5	0.23	4.77
10/24/2023 20:45	10/31/2023 0:00	5	0.23	4.77
10/17/2023 20:52	10/31/2023 0:00	6	0.25	5.75
10/10/2023 20:52	10/31/2023 0:00	7	0.28	6.72
10/24/2023 20:44	10/31/2023 0:00	7	0.28	6.72
10/15/2023 8:30	10/31/2023 0:00	10	0.35	9.65
10/17/2023 20:34	10/31/2023 0:00	10	0.36	9.64
10/24/2023 20:36	10/31/2023 0:00	10	0.36	9.64
10/24/2023 20:38	10/31/2023 0:00	10	0.36	9.64
10/24/2023 20:38	10/31/2023 0:00	10	0.36	9.64
9/29/2023 21:05	10/31/2023 0:00	15	0.61	14.39
10/9/2023 10:11	10/31/2023 0:00	15	0.43	14.57
10/24/2023 20:36	10/31/2023 0:00	15	0.49	14.51
10/9/2023 9:58	10/31/2023 0:00	34	1.12	32.88
10/27/2023 20:32	11/30/2023 0:00	5	0.23	4.77
10/27/2023 20:33	11/30/2023 0:00	5	0.23	4.77
10/27/2023 20:35	11/30/2023 0:00	5	0.23	4.77
10/27/2023 20:36	11/30/2023 0:00	5	0.23	4.77
10/27/2023 20:36	11/30/2023 0:00	10	0.36	9.64
10/27/2023 20:38	11/30/2023 0:00	5	0.23	4.77
10/27/2023 20:39	11/30/2023 0:00	5	0.23	4.77

10/27/2023 20:40	11/30/2023 0:00	5	0.23	4.77
10/27/2023 20:40	11/30/2023 0:00	25	0.75	24.25
11/7/2023 20:36	11/30/2023 0:00	5	0.23	4.77
11/7/2023 20:36	11/30/2023 0:00	10	0.36	9.64
11/7/2023 20:37	11/30/2023 0:00	5	0.23	4.77
11/7/2023 20:37	11/30/2023 0:00	10	0.36	9.64
11/7/2023 20:38	11/30/2023 0:00	5	0.23	4.77
11/7/2023 20:40	11/30/2023 0:00	5	0.23	4.77
11/7/2023 21:26	11/30/2023 0:00	15	0.49	14.51
11/11/2023 14:19	11/30/2023 0:00	10	0.36	9.64
11/14/2023 12:28	11/30/2023 0:00	10	0.36	9.64
11/14/2023 20:37	11/30/2023 0:00	10	0.36	9.64
11/14/2023 20:40	11/30/2023 0:00	10	0.36	9.64
11/14/2023 20:43	11/30/2023 0:00	5	0.23	4.77
11/14/2023 20:48	11/30/2023 0:00	5	0.23	4.77
11/17/2023 20:36	11/30/2023 0:00	10	0.36	9.64
11/17/2023 20:40	11/30/2023 0:00	5	0.23	4.77
11/17/2023 20:40	11/30/2023 0:00	5	0.23	4.77
11/17/2023 20:40	11/30/2023 0:00	11	0.5	10.5
11/17/2023 20:44	11/30/2023 0:00	10	0.36	9.64
11/21/2023 20:35	11/30/2023 0:00	10	0.36	9.64
11/21/2023 20:37	11/30/2023 0:00	5	0.23	4.77
11/21/2023 20:38	11/30/2023 0:00	5	0.23	4.77
11/21/2023 20:40	11/30/2023 0:00	5	0.23	4.77
11/21/2023 20:43	11/30/2023 0:00	10	0.36	9.64
11/28/2023 20:59	1/2/2024 0:00	25	0.88	24.12
11/28/2023 20:43	1/2/2024 0:00	10	0.36	9.64
11/28/2023 20:43	1/2/2024 0:00	5	0.23	4.77
11/28/2023 20:45	1/2/2024 0:00	5	0.23	4.77
12/1/2023 20:33	1/2/2024 0:00	10	0.36	9.64
12/1/2023 20:35	1/2/2024 0:00	5	0.23	4.77
12/1/2023 20:39	1/2/2024 0:00	5	0.23	4.77
12/1/2023 20:40	1/2/2024 0:00	5	0.23	4.77
12/1/2023 20:41	1/2/2024 0:00	5	0.23	4.77
12/5/2023 20:54	1/2/2024 0:00	10	0.36	9.64
12/19/2023 17:32	1/2/2024 0:00	1	0.12	0.88
12/19/2023 20:07	1/2/2024 0:00	5	0.23	4.77
12/19/2023 20:10	1/2/2024 0:00	5	0.23	4.77
12/19/2023 20:16	1/2/2024 0:00	5	0.23	4.77
12/19/2023 20:17	1/2/2024 0:00	5	0.23	4.77
12/19/2023 20:18	1/2/2024 0:00	20	0.92	19.08
12/19/2023 20:19	1/2/2024 0:00	10	0.36	9.64
12/19/2023 20:23	1/2/2024 0:00	10	0.36	9.64
12/5/2023 20:40	1/2/2024 0:00	10	0.36	9.64
12/5/2023 20:40	1/2/2024 0:00	5	0.23	4.77
12/5/2023 20:42	1/2/2024 0:00	5	0.23	4.77

12/5/2023 20:46	1/2/2024 0:00	5	0.23	4.77
12/5/2023 20:51	1/2/2024 0:00	10	0.36	9.64
12/12/2023 20:36	1/2/2024 0:00	8	0.31	7.69
12/12/2023 20:37	1/2/2024 0:00	10	0.36	9.64
12/12/2023 20:40	1/2/2024 0:00	5	0.23	4.77
12/12/2023 20:42	1/2/2024 0:00	3	0.18	2.82
12/12/2023 20:43	1/2/2024 0:00	10	0.36	9.64
12/12/2023 20:47	1/2/2024 0:00	10	0.36	9.64
12/12/2023 20:54	1/2/2024 0:00	15	0.49	14.51
1/16/2024 20:40	1/19/2024 0:00	20	0.62	19.38
1/16/2024 20:42	1/19/2024 0:00	5	0.23	4.77
1/16/2024 20:44	1/19/2024 0:00	10	0.36	9.64
1/16/2024 20:46	1/19/2024 0:00	10	0.36	9.64
1/16/2024 20:47	1/19/2024 0:00	5	0.23	4.77
1/16/2024 20:52	1/19/2024 0:00	10	0.36	9.64
1/16/2024 20:52	1/19/2024 0:00	10	0.36	9.64
1/16/2024 20:54	1/19/2024 0:00	5	0.23	4.77
1/16/2024 20:59	1/19/2024 0:00	50	1.4	48.6
1/23/2024 20:35	1/26/2024 0:00	10	0.36	9.64
1/23/2024 20:39	1/26/2024 0:00	10	0.36	9.64
1/23/2024 20:41	1/26/2024 0:00	10	0.36	9.64
1/23/2024 20:43	1/26/2024 0:00	5	0.23	4.77
1/23/2024 20:44	1/26/2024 0:00	3	0.18	2.82
1/23/2024 20:44	1/26/2024 0:00	10	0.36	9.64
1/23/2024 20:45	1/26/2024 0:00	5	0.23	4.77
1/23/2024 20:45	1/26/2024 0:00	5	0.23	4.77
1/23/2024 20:46	1/26/2024 0:00	5	0.23	4.77
1/23/2024 20:51	1/26/2024 0:00	15	0.49	14.51
1/26/2024 20:29	1/31/2024 0:00	5	0.23	4.77
1/26/2024 20:31	1/31/2024 0:00	3	0.18	2.82
1/26/2024 20:32	1/31/2024 0:00	5	0.23	4.77
1/26/2024 20:34	1/31/2024 0:00	5	0.23	4.77
1/26/2024 20:35	1/31/2024 0:00	5	0.23	4.77
1/26/2024 20:36	1/31/2024 0:00	5	0.23	4.77
1/26/2024 20:38	1/31/2024 0:00	5	0.23	4.77
1/26/2024 20:38	1/31/2024 0:00	10	0.36	9.64
1/26/2024 20:39	1/31/2024 0:00	5	0.23	4.77
2/27/2024 20:39	3/1/2024 0:00	10	0.36	9.64
2/27/2024 20:40	3/1/2024 0:00	10	0.36	9.64
2/27/2024 20:40	3/1/2024 0:00	10	0.36	9.64
2/27/2024 20:41	3/1/2024 0:00	15	0.49	14.51
2/27/2024 20:41	3/1/2024 0:00	10	0.36	9.64
2/27/2024 20:43	3/1/2024 0:00	5	0.23	4.77
2/27/2024 20:43	3/1/2024 0:00	5	0.23	4.77
2/27/2024 20:43	3/1/2024 0:00	10	0.36	9.64
2/27/2024 20:44	3/1/2024 0:00	5	0.23	4.77

2/27/2024 20:45	3/1/2024 0:00	10	0.36	9.64
2/27/2024 20:47	3/1/2024 0:00	6	0.25	5.75
2/27/2024 20:48	3/1/2024 0:00	5	0.23	4.77
2/27/2024 20:48	3/1/2024 0:00	5	0.23	4.77
3/1/2024 20:33	3/6/2024 0:00	5	0.23	4.77
3/1/2024 20:39	3/6/2024 0:00	5	0.23	4.77
3/1/2024 20:40	3/6/2024 0:00	5	0.23	4.77
3/1/2024 20:40	3/6/2024 0:00	5	0.23	4.77
3/5/2024 20:40	3/8/2024 0:00	10	0.36	9.64
3/5/2024 20:41	3/8/2024 0:00	10	0.36	9.64
3/5/2024 20:46	3/8/2024 0:00	5	0.23	4.77
3/5/2024 20:49	3/8/2024 0:00	10	0.36	9.64
3/12/2024 20:42	3/15/2024 0:00	10	0.36	9.64
3/12/2024 20:42	3/15/2024 0:00	5	0.23	4.77
3/12/2024 20:43	3/15/2024 0:00	5	0.23	4.77
3/12/2024 20:44	3/15/2024 0:00	5	0.23	4.77
3/12/2024 20:50	3/15/2024 0:00	5	0.23	4.77
3/12/2024 20:54	3/15/2024 0:00	10	0.36	9.64
3/19/2024 20:35	3/22/2024 0:00	5	0.23	4.77
3/19/2024 20:36	3/22/2024 0:00	10	0.36	9.64
3/26/2024 20:44	4/2/2024 1:00	5	0.23	4.77
3/26/2024 20:46	4/2/2024 1:00	6	0.25	5.75
3/12/2024 20:58	3/15/2024 0:00	15	0.61	14.39
3/19/2024 20:50	3/22/2024 0:00	11	0.38	10.62
3/26/2024 20:51	4/2/2024 1:00	52	1.45	50.55
2/27/2024 20:59	3/1/2024 0:00	20	0.62	19.38
2/27/2024 21:00	3/1/2024 0:00	19.15	0.6	18.55
3/5/2024 20:57	3/8/2024 0:00	40	1.28	38.72
	8/31/2023 1:00	55	1.53	53.47
	8/31/2023 1:00	17	0.66	16.34
	8/31/2023 1:00	20	0.62	19.38
	8/31/2023 1:00	22	0.67	21.33
12/18/2023 12:12	1/2/2024 0:00	-85	0	-85
9/2/2023 16:40	10/2/2023 1:00	120	3.22	116.78
9/24/2023 17:26	10/2/2023 1:00	105	3.04	101.96
9/27/2023 13:44	10/2/2023 1:00	95	1.63	93.37
9/27/2023 11:47	10/2/2023 1:00	95	1.63	93.37
9/29/2023 20:27	10/31/2023 0:00	10	0.36	9.64
9/29/2023 20:28	10/31/2023 0:00	10	0.36	9.64
10/3/2023 20:22	10/31/2023 0:00	10	0.36	9.64
10/3/2023 20:28	10/31/2023 0:00	10	0.36	9.64
10/10/2023 14:17	10/31/2023 0:00	10	0.35	9.65
10/10/2023 20:40	10/31/2023 0:00	10	0.36	9.64
9/29/2023 20:27	10/31/2023 0:00	20	0.62	19.38
10/11/2023 10:06	10/31/2023 0:00	75	1.33	73.67
10/11/2023 19:23	10/31/2023 0:00	75	1.33	73.67

10/1/2023 20:54	10/31/2023 0:00	80	1.4	78.6
10/11/2023 12:40	10/31/2023 0:00	80	1.4	78.6
10/16/2023 12:55	10/31/2023 0:00	90	1.55	88.45
10/11/2023 12:50	10/31/2023 0:00	100	1.7	98.3
10/19/2023 18:45	10/31/2023 0:00	110	1.85	108.15
10/31/2023 20:52	11/30/2023 0:00	20	0.5	19.5
11/13/2023 21:27	11/30/2023 0:00	75	1.33	73.67
11/24/2023 16:02	11/30/2023 0:00	85	1.48	83.52
12/18/2023 12:51	1/2/2024 0:00	66.13	1.19	64.94
12/15/2023 11:14	1/2/2024 0:00	90	1.55	88.45
12/7/2023 19:30	1/2/2024 0:00	75	1.33	73.67
11/28/2023 19:42	1/2/2024 0:00	75	1.33	73.67
12/5/2023 21:10	1/2/2024 0:00	40	0.8	39.2
12/5/2023 9:59	1/2/2024 0:00	32.5	0.69	31.81
12/2/2023 14:12	1/2/2024 0:00	10	0.35	9.65
12/6/2023 9:44	1/2/2024 0:00	75	1.33	73.67
12/6/2023 7:41	1/2/2024 0:00	75	1.33	73.67
11/29/2023 6:31	1/2/2024 0:00	85	1.48	83.52
12/10/2023 19:14	1/2/2024 0:00	20	0.5	19.5
12/5/2023 11:24	1/2/2024 0:00	85	1.48	83.52
12/15/2023 12:01	1/2/2024 0:00	90	1.55	88.45
12/18/2023 15:19	1/2/2024 0:00	100	1.7	98.3
10/24/2023 20:55	10/31/2023 0:00	25	0.75	24.25
11/25/2023 9:38	11/30/2023 0:00	5	0.34	4.66
12/1/2023 20:59	1/2/2024 0:00	5	0.34	4.66
3/1/2024 20:45	3/6/2024 0:00	6.2	0.36	5.84
	5/2/2023 1:00	20	0.5	19.5
	5/2/2023 1:00	5	0.23	4.77
	5/2/2023 1:00	5	0.23	4.77
	5/2/2023 1:00	5	0.23	4.77
	5/2/2023 1:00	5	0.23	4.77
	5/2/2023 1:00	5	0.23	4.77
	5/2/2023 1:00	5	0.23	4.77
	5/2/2023 1:00	5	0.23	4.77
	5/2/2023 1:00	5	0.23	4.77
	5/2/2023 1:00	40	1.28	38.72
	5/2/2023 1:00	10	0.36	9.64
	5/2/2023 1:00	10	0.36	9.64
	5/2/2023 1:00	15	0.49	14.51
	5/2/2023 1:00	20	0.62	19.38
	5/2/2023 1:00	20	0.62	19.38
	5/2/2023 1:00	10	0.36	9.64
	5/2/2023 1:00	10	0.36	9.64
	5/2/2023 1:00	20	0.62	19.38
	5/2/2023 1:00	5	0.23	4.77
	5/2/2023 1:00	5	0.23	4.77

5/2/2023 1:00	5	0.23	4.77
5/2/2023 1:00	5	0.23	4.77
5/2/2023 1:00	5	0.23	4.77
5/2/2023 1:00	10	0.36	9.64
5/2/2023 1:00	5	0.23	4.77
5/2/2023 1:00	20	0.62	19.38
5/2/2023 1:00	5	0.23	4.77
5/2/2023 1:00	20	0.62	19.38
	<b>300</b>	<b>10.6</b>	<b>289.4</b>

5/2/2023 1:00	-0.04	0	-0.04
5/2/2023 1:00	-0.02	0	-0.02
5/2/2023 1:00	-0.02	0	-0.02
	<b>-0.08</b>	<b>0</b>	<b>-0.08</b>

---

5/2/2023 1:00	75	1.25	73.75
5/2/2023 1:00	75	1.25	73.75
5/2/2023 1:00	85	1.39	83.61
5/2/2023 1:00	10	0.34	9.66
5/2/2023 1:00	75	1.25	73.75
5/2/2023 1:00	10	0.34	9.66
	<b>330</b>	<b>5.82</b>	<b>324.2</b>

<b>Totals 30/06/2023</b>	<b>629.9</b>	<b>16.4</b>	<b>613.5</b>
--------------------------	--------------	-------------	--------------

### Stipe Payout Report May 2023

<b>629.9</b>	<b>16.4</b>	<b>613.5</b>
--------------	-------------	--------------

5/31/2023 1:00	6.29	0.29	6
5/31/2023 1:00	10.34	0.36	9.98
5/31/2023 1:00	10	0.35	9.65
5/31/2023 1:00	5	0.23	4.77
5/31/2023 1:00	5	0.23	4.77
5/31/2023 1:00	5	0.23	4.77
5/31/2023 1:00	5	0.23	4.77
5/31/2023 1:00	5	0.23	4.77
5/31/2023 1:00	5	0.23	4.77
5/31/2023 1:00	7	0.28	6.72
5/31/2023 1:00	5	0.23	4.77
5/31/2023 1:00	5	0.23	4.77
5/31/2023 1:00	5	0.23	4.77
5/31/2023 1:00	17	0.54	16.46
5/31/2023 1:00	10	0.47	9.53
5/31/2023 1:00	10	0.36	9.64
5/31/2023 1:00	10	0.36	9.64
5/31/2023 1:00	5	0.23	4.77
5/31/2023 1:00	5	0.34	4.66



33989 1316 32673

67977 2632 65346

2E+05 6611 2E+05

2E+05 9243 2E+05

## Stripe Report October

5E+05 ### 5E+05

5E+05 ### 5E+05

---

2E+06 ### 2E+06

---

3E+06 ### 3E+06

0 0 0

## Stripe November 2023

5E+06 ### 4E+06

---

1E+07 ### 9E+06

1E+07 ### 9E+06

3E+07 ### 3E+07

3E+07 ### 3E+07

---

0 0 0

## Stripe Payout December 2023

8E+07 ### 8E+07

8E+07 ### 8E+07

---

3E+08 ### 2E+08

5E+08 ### 5E+08

0 0 0

Stripe Payout January 2023

0 0 0

0 0 0

9E+08 ### 9E+08

1E+09 ### 9E+08

Stripe Payout February 2024

0 0 0

3E+09 ### 3E+09

Total Payout February

3E+09 ### 3E+09

Stripe Payout 2nd April 2024

3E+09 ### 3E+09

9E+09 ### 8E+09

0 0

---

2E+10 ### 2E+10

---

0 0 0

2nd April Total Payouts

---

3E+08 ### 2E+08

e Payments Breakdown 2023	
Reporting Categ	Description
fee	Fundraising
fee	Fundraising
fee	Fundraising
fee	Fundraising
fee	Fundraising
fee	Fundraising
fee	Fundraising
fee	Radar (2023-05-30): Radar for Fraud Teams
fee	Radar (2023-06-05): Radar for Fraud Teams
fee	Radar (2023-06-06): Radar for Fraud Teams
fee	Radar (2023-06-07): Radar for Fraud Teams
fee	Radar (2023-06-13): Radar for Fraud Teams
fee	Radar (2023-06-14): Radar for Fraud Teams
fee	Radar (2023-06-17): Radar for Fraud Teams
fee	Radar (2023-06-20): Radar for Fraud Teams
fee	Radar (2023-06-27): Radar for Fraud Teams
fee	Radar (2023-06-28): Radar for Fraud Teams
fee	Radar (2023-07-04): Radar for Fraud Teams
fee	Radar (2023-07-23): Radar for Fraud Teams
fee	Radar (2023-08-14): Radar for Fraud Teams
fee	Radar (2023-08-15): Radar for Fraud Teams
fee	Radar (2023-08-16): Radar for Fraud Teams
fee	Application fee refund for ch_3NITOtHIGCMXL2Rx19Uv0hi
fee	Application fee refund for ch_3NITPWHIGCMXL2Rx1xSI4N
refund	REFUND FOR CHARGE (Payment for Stripe App)
refund	REFUND FOR CHARGE (Payment for Stripe App)
fee	Radar (2023-08-29): Radar for Fraud Teams
fee	Radar (2023-09-05): Radar for Fraud Teams
fee	Radar (2023-09-12): Radar for Fraud Teams
fee	Radar (2023-09-13): Radar for Fraud Teams
fee	Radar (2023-09-19): Radar for Fraud Teams
fee	Radar (2023-09-23): Radar for Fraud Teams
fee	Radar (2023-09-24): Radar for Fraud Teams
	Radar (2023-09-27): Radar for Fraud Teams
	Radar (2023-09-28): Radar for Fraud Teams

	Radar (2023-09-29): Radar for Fraud Teams
	Radar (2023-10-01): Radar for Fraud Teams
	Radar (2023-10-03): Radar for Fraud Teams
	Radar (2023-10-09): Radar for Fraud Teams
	Radar (2023-10-10): Radar for Fraud Teams
	Radar (2023-10-11): Radar for Fraud Teams
	Radar (2023-10-15): Radar for Fraud Teams
	Radar (2023-10-16): Radar for Fraud Teams
	Radar (2023-10-17): Radar for Fraud Teams
	Radar (2023-10-19): Radar for Fraud Teams
	Terminal (2023-10-03): Tap on Mobile- Per Auth Fee
	Terminal (2023-10-06): Tap on Mobile- Per Auth Fee
fee	Radar (2023-10-27): Radar for Fraud Teams
fee	Radar (2023-10-31): Radar for Fraud Teams
fee	Radar (2023-11-07): Radar for Fraud Teams
fee	Radar (2023-11-11): Radar for Fraud Teams
fee	Radar (2023-11-13): Radar for Fraud Teams
fee	Radar (2023-11-14): Radar for Fraud Teams
fee	Radar (2023-11-17): Radar for Fraud Teams
fee	Radar (2023-11-24): Radar for Fraud Teams
fee	Radar (2023-11-25): Radar for Fraud Teams
fee	Radar (2023-11-28): Radar for Fraud Teams
fee	Radar (2023-11-29): Radar for Fraud Teams
fee	Radar (2023-12-01): Radar for Fraud Teams
fee	Radar (2023-12-02): Radar for Fraud Teams
fee	Radar (2023-12-05): Radar for Fraud Teams
fee	Radar (2023-12-06): Radar for Fraud Teams
fee	Radar (2023-12-07): Radar for Fraud Teams
fee	Radar (2023-12-10): Radar for Fraud Teams
fee	Radar (2023-12-11): Radar for Fraud Teams
fee	Radar (2023-12-12): Radar for Fraud Teams
fee	Radar (2023-12-15): Radar for Fraud Teams
fee	Radar (2023-12-17): Radar for Fraud Teams
fee	Radar (2023-12-18): Radar for Fraud Teams
fee	Radar (2023-12-19): Radar for Fraud Teams
fee	Terminal (2023-12-05): Tap on Mobile- Per Auth Fee
fee	Radar (2024-03-01): Radar for Fraud Teams

fee	Radar (2024-03-05): Radar for Fraud Teams
fee	Radar (2024-03-12): Radar for Fraud Teams
charge	Book Purchase
charge	Book Purchase
charge	Book Purchase
charge	Book Purchase
charge	Book Purchase
charge	Book Purchase
charge	Cyberloka purchase
charge	Cyberloka purchase
charge	Cyberloka purchase
charge	Cyberloka purchase
charge	Study
charge	Study
charge	Study
charge	Donation: George Whitehouse Study
charge	Day Retreats
charge	Donation: Tanya Berman - towards womens day retreat
charge	Donation: for womens day retreat
charge	Payment for Stripe App
charge	Payment for Stripe App
charge	Payment for Stripe App
charge	Payment for Stripe App
charge	Payment for Stripe App
charge	Payment for Stripe App
charge	Payment for Stripe App
charge	Payment for Stripe App
charge	Payment for Stripe App
charge	Study cash 11.11.23
charge	Clair Johnson (study)
charge	Donation: David Kay
charge	Donation: Dhana
charge	Donation: Hugh Davies
charge	Donation: Ravi Puri

charge	Donation: Rory Fryer (study)
charge	Donation: Tim Hayler (study)
charge	Day Retreat
charge	Day Retreat
charge	Day Retreat
charge	Day Retreat
charge	Day Retreat
charge	Day Retreat
charge	Day Retreat
charge	Day retreat cash 17/3/24
charge	Donation: Tim Hayler
charge	Donation: Anonymous
charge	Donation: Jenifer Zeligs
charge	Donation: Prainaketu

[illegible]

[illegible]

[illegible]

charge  
charge  
charge  
charge  
charge  
charge  
charge

[illegible]

[illegible][illegible][illegible][illegible]

charge  
charge  
charge  
charge  
charge  
charge  
charge  
charge  
charge

charge  
charge  
charge  
charge  
charge  
charge  
charge

charge  
charge

charge  
charge

charge  
charge

charge  
charge

charge  
charge

charge  
charge

charge  
charge

charge  
charge

charge  
charge

charge  
charge

charge  
charge

charge  
charge

charge  
charge

charge  
charge

charge  
charge

[illegible]

Sangha Night cash 16/1/24

Sangha Night cash 23/1/24

## Payment for Stripe App

## Payment for Stripe App

## Payment for Stripe App

## Payment for Stripe App

## Payment for Stripe App

## Payment for Stripe App

## Payment for Stripe App

## Payment for Stripe App

## Payment for Stripe App

# Sangha Night

# Sangha Night

# Sangha Night

# Sangha Night

# Sangha Night

# Sangha Night

# Sangha Night

# Sangha Night

# Sangha Night



### Payment for Stripe App

[illegible]

[illegible]

fee	Radar (2023-04-18): Radar for Fraud Teams
fee	Radar (2023-04-23): Radar for Fraud Teams
fee	Radar (2023-04-24): Radar for Fraud Teams

charge	Spring Weekend Retreat 2023: Helen Barrett
charge	Spring Weekend Retreat 2023: Jackie Thompson
charge	Spring Weekend Retreat 2023: Julie Bolton
charge	Spring Weekend Retreat 2023: Michael Buick
charge	Spring Weekend Retreat 2023: Rebecca Stallard
charge	Spring Weekend Retreat 2023: Sthiradeva

[illegible]

[illegible]

<b>Code</b>

## Administration

## Administration

## Administration

## Administration

## Administration

## Administration

## Administration

## Administration

## Administration

## Administration

## Administration

## Administration

## Administration

## Administration

## Administration

## Administration

## Administration

## Administration

## Administration

## Administration

## Administration

## Administration

## Administration

## Administration

## Administration

## Administration

## Administration

## Administration

## Administration

## Administration

## Administration

## Administration

## Administration

## Administration

## Administration

[illegible]

Administration

Administration

Bookshop

Bookshop

Bookshop

Bookshop

Bookshop

Bookshop

Bookshop

Bookshop

Bookshop

Bookshop

Day Retreats

Day Retreats

Day Retreats

Day Retreats

Day Retreats

Day Retreats

Day Retreats

Day Retreats

Day Retreats

Day Retreats

Day Retreats

Day Retreats

Day Retreats

Day Retreats

Day Retreats

Day Retreats

Day Retreats

Day Retreats

Day Retreats

Day Retreats

Day Retreats

Day Retreats

Day Retreats

Day Retreats

Day Retreats

Day Retreats

Day Retreats

Day Retreats

Day Retreats

Day Retreats

Day Retreats

Day Retreats

Day Retreats

Day Retreats

Day Retreats

Day Retreats

One-off

One-off

One-off

One-off

One-off

One-off

One-off

One-off

One-off

One-off

One-off

One-off

One-off

One-off

One-off

One-off

One-off

One-off

One-off

One-off

Operating Costs

Sangha Night

Sangha Night

Sangha Night

Sangha Night

Sangha Night

Sangha Night

Sangha Night

[illegible]

[illegible]

[illegible]

[illegible]

Sangha Nights  
Sangha Nights  
Sangha Nights  
Sangha Nights  
Sangha Nights  
Sangha Nights  
Sangha Nights  
Sangha Nights  
Sangha Nights  
Sangha Nights  
Sangha Nights  
Sangha Nights  
Sangha Nights  
Sangha Nights  
Sangha Nights  
Sangha Nights  
Sangha Nights  
Sangha Nights  
Sangha Nights  
Sangha Nights  
Sangha Nights  
Sangha Nights  
Sangha Nights  
Sangha Nights  
Sangha Nights  
Sangha Nights  
Sangha Nights  
Sangha Nights  
Sangha Nights  
Sangha Nights  
Sangha Nights  
Sangha Nights  
Sangha Nights  
Sangha Nights  
Sangha Nights  
Sangha Nights  
Sangha Nights  
Sangha Nights  
Sangha Nights  
Sangha Nights  
Sangha Nights  
Sangha Nights  
Sangha Nights  
Sangha Nights  
Sangha Nights  
Sangha Nights  
Sangha Nights

[illegible]



## Weekend Retreats

## Weekend Retreats

## Weekend Retreats

## Weekend Retreats

## Weekend Retreats

## Weekend Retreats

## Weekend Retreats

## Weekend Retreats

## Weekend Retreats

## Weekend Retreats

## Weekend Retreats

## Weekend Retreats

## Weekend Retreats

## Weekend Retreats

## Weekend Retreats

## Weekend Retreats

## Weekend Retreats

## Weekend Retreats

## Weekend Retreats

## Weekend Retreats

## Weekend Retreats

## Weekend Retreats

## Young Buddhists

## Young Buddhists

## Young Buddhists

## Young Buddhists

\_\_\_\_\_

---

---

---