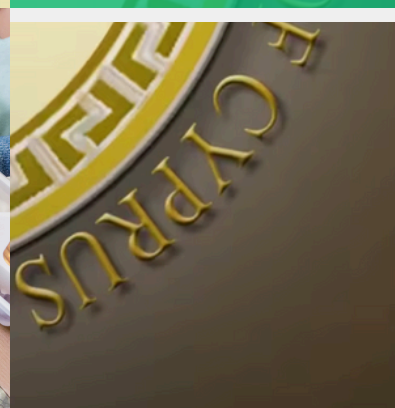
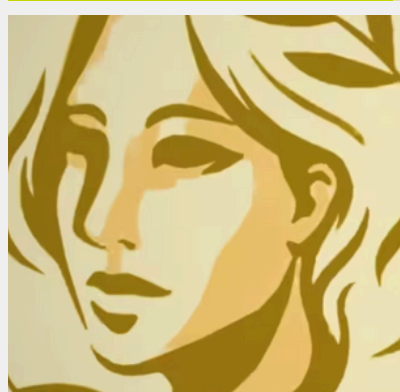
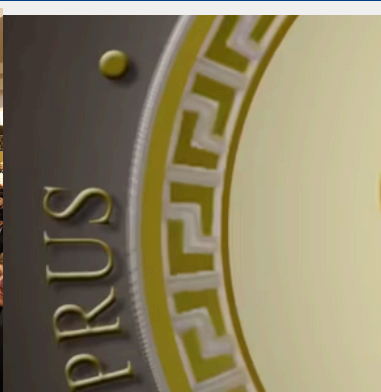


Annual Report



PREPARED BY CEO
PANIKOS PANAYIOTOU

#HELPUSEHELPOTHERS



About LGK

LGK in the community was set up in 2014 in memory of the late Lakis Panayiotou. Founder of the LGK mission of using food and heritage to unite people for positive change. Since then the charity have grown from strength to strength with programmes that run throughout the year.

The heart of the LGK annual programme is the pop up traditional Greek village taverna that runs every May and June each year. Lakis Greek Kitchen as it is known is the organisations fundraising arm and all proceeds support the annual running costs alongside assisting those that need it most from profits made.

The organisations operates from a four pillar strategy which includes:

LOVE FOOD - This includes an all year round food bank, food education schemes and much more.

CELEBRATE HERITAGE - We celebrate document and collect stories and journeys that are at the risk of being lost in time.

BE CREATIVE - Is our award winning production

LEARN DIGITAL - Is our accredited E-learning platform



info@lgk.org.uk

STATEMENT FROM THE CHAIR

Its now my second year as chair of this amazing charity which year on year helps so many people truly in need. I am surrounded by fantastic trustees that put the community first and possess the genuine spirit of giving and are involved for the right reasons.

The next few years just as last year are vital for the future of LGK and we all have to work hard and do our bit in order to make the charity sustainable. In order for the charity to grow, we operate as a business but at the same time those that will benefit from our work, will be the communities and the individuals that need it most. We are trying our best to strengthen our fundraising arm and the commissioned services we offer. This I feel and the board is in agreement steers us away from the traditional grant dependent charity model in so many organisations that exist within the 3rd sector.

I have high hopes for 2025 that we continue to grow in all of the agreed directions of our mission to make everlasting change.

Mrs Orlean S Hazell
AKA Joy Hazell

CHAIR PERSON/BOARD OF TRUSTEES





STATEMENT FROM THE CEO

The journey must continue into the unknown future which for LGK I feel is bright. We continue to serve those that need our support and do our bit for society. Unfortunately we don't have the power to eliminate poverty but we can try and make a dent in its progress.

As a charity it is important always to build sustainability into the heart of our operation and I am very excited to be leading a fantastic team on this mission. I am now at the start of my first year as the full time CEO of LGK which I founded so many years ago and to date have been a volunteer for over 10 years parallel to my other work responsibilities. It has always been my dream to give all of my time to LGK instead of being shared by so many other programmes and projects which I wasn't as passionate about like LGK. We have big plans for 2025 and pray that we manage to reach the top of the hill we are climbing to make LGK in the community the success it deserves to be.

Mr Panikos Panayiotou

CEO LGK IN THE COMMUNITY

2023/24 LGK PORTFOLIO

Although this AGM year like all years so far has had its challenges we have prevailed and managed to ignite key projects and programmes that align with our strategy.

2023/24 PROJECTS

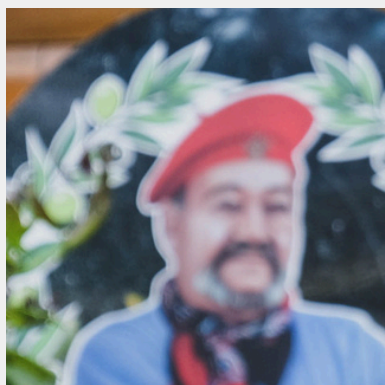
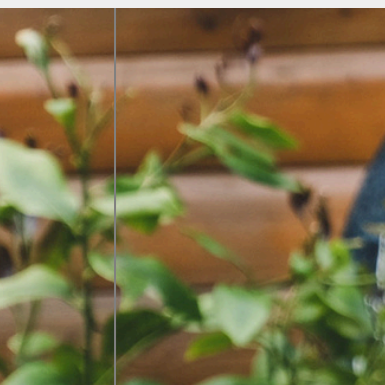
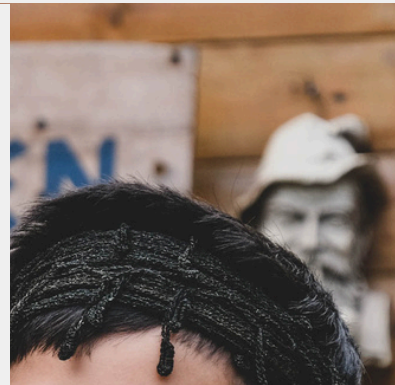
- Queens of Cyprus
- Queens of the city programme Heritage Fund
- Love for People Campaign
- Spread the Love Campaign
- Sustainable food systems
- BIG XMAS FEED

ANNUAL PROGRAMME

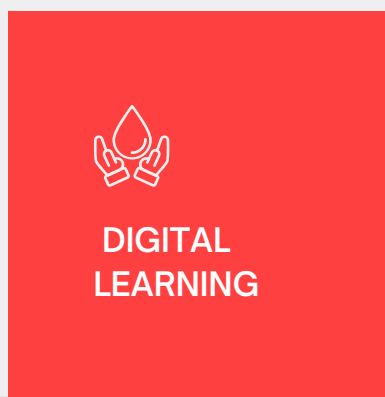
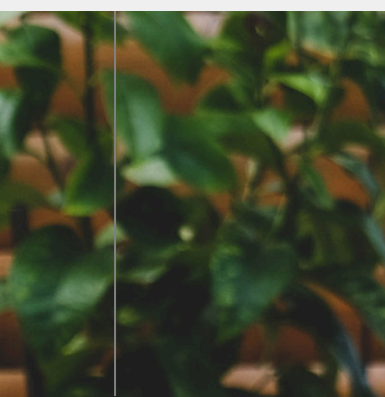
- On going food bank
- Taverna fundraiser May-June 2024
- LGK POP UP EVENTS
- Rainy Day support
- Clothes, essentials bank



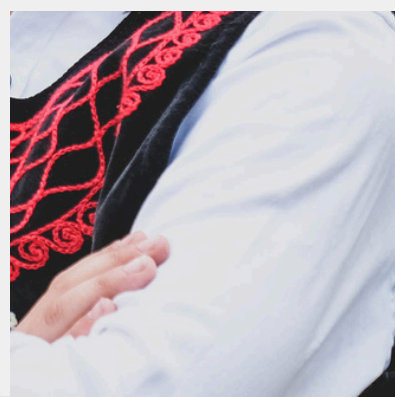
ABILITY TO SUSTAIN



ACTIVATE
INNOVATION



DIGITAL
LEARNING



Queens of Cyprus



LGK PRODUCTIONS

As part of our Be Creative strategy our journey through the queens stories continues. In a feature documentary exploring the Cypriot spirit we interview a series of high profile Cypriots globally to assess who the Cyprus Queens are behind their success.

QUEENS OF THE CITY



The Journey of migrant and home brewed women of Walsall,
their stories, their food and their heritage



STORIES

FOOD

ART

CULTURE

QUEENS OF THE CITY

HERITAGE THROUGH

PICTURES

FOOD

STORIES

RECUIT AND TRAIN X10 COMMUNITY/SCHOOL AMBASSADORS TO DELIVER FOOD AND HERITAGE JOURNEY WORKSHOPS

IN PERSON AND ONLINE ACCREDITED TRAINING COURSE FOR AMBASSADORS

SCHOOL WORKSHOPS

COMMUNITY WORKSHOPS

WORKSHOP CONTENT

FROM THERE TO HERE
HERITAGE JOURNEYS

WHO ARE THE CITY
QUEENS

HERITAGE NUTRITION

HERITAGE SORIES
VIDEO ASSETS

ONLINE HERITAGE
RESOURCE LIBRARY

QUEENS OF THE CITY LEGACY MURAL

QUEENS OF THE CITY JOURNEYS

- 10 XSELECTED QUEENS WILL BE VIDEO AND AUDIO INTERVIEWED FROM VARIOUS COMMUNITIES
- 2X WALSALL CENTURIONS WILL BE VIDEO AND AUDIO INTERVIEWED
- 4xWALSALL QUEENS FROM THE WHITE COMMUNITIES WILL BE VIDEO AND AUDIO INTERVIEWED



QUEENS OF THE CITY IN PICTURES

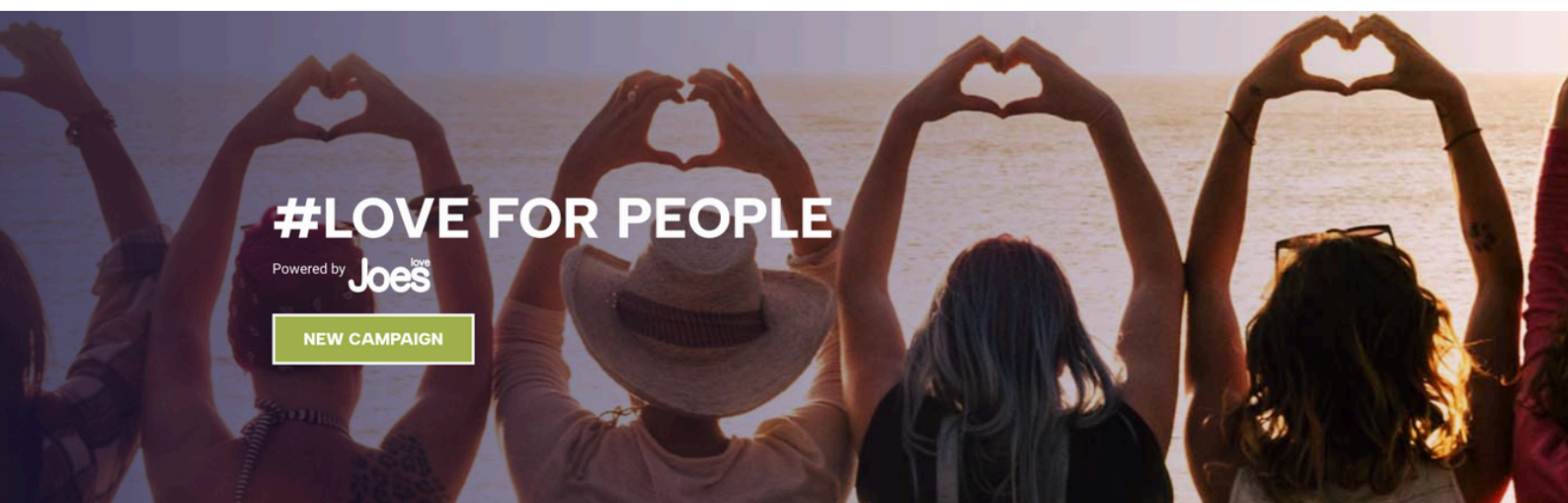
- 10 XSELECTED QUEENS WILL BE TRANSFORMED INTO ILLUSTRATIONS AND A CITY WALL MURAL
- 2X WALSALL CENTURIONS WILL BE TRANSFORMED INTO ILLUSTRATIONS AND A CITY WALL MURAL
- 4xWALSALL QUEENS FROM THE WHITE COMMUNITIES WILL BE TRANSFORMED INTO ILLUSTRATIONS AND A CITY WALL MURAL



QUEENS OF THE CITY DISHES

- 10 SELECTED QUEENS WILL CONTRIBUTE OR HAVE RECIPES FOR DISHES THEIR HERUTAGE CREATED THAT REPRESENT THEIR CULTURE
- 2X WALSALL CENTURIONS WILL CONTRIBUTE OR HAVE RECIPES FOR DISHES THEIR HERITAGE CREATED THAT REPRESENT THEIR CULTURE
- 4xWALSALL QUEENS FROM THE WHITE COMMUNITIES WILL CONTRIBUTE OR HAVE RECIPES FOR DISHES THEIR HERUTAGE CREATED THAT REPRESENT THEIR CULTURE
- ALL DISHES WILL FORM PART OF THE HERITAGE FOOD JOURNEY WORKSHOPS IN SCHOOLS AND COMMUNITY ORGANISATIONS





True love doesn't have a happy ending, because true love doesn't end
BOB MARLEY

LOVE FOR PEOPLE CAMPAIGN

Rainy Day fund - support service for families in need of a bit of extra cash to get them through the month or hard times. **15 FAMILIES IN NEED CATERED FOR IN 2023/4**

Food Bank programme - emergency food supplies to those in most need. **PRESENTATION IVORA BEAN**

Chef Programme - A blended learning scheme for 16-24yr olds. **IN DEVELOPMENT PHASE**

Apprenticeship scheme - in partnership with Love Joes for 16-24yr olds. **IN DEVELOPMENT PHASE**

Volunteer Bank - Working with Love Joes employees

Global Scheme - Supporting young people across the globe.

Spread the Love Educational programme - Supporting students in need with study fees and expenses.

LGK GLOBAL CAMPAIGN

Due to our fundraising ability we have now agreed as part of our annual programme to support two worthy international causes. These schemes fall in line with our core values to support the human race in crisis and to aid in education and resources.



MADAGASCAR

LGK as part of our Love for People Campaign aim to raise an annual sum to support in the humanitarian crisis in Madagascar and the lack of medical personnel and supplies.

OVER 200 ESSENTIAL MEDICAL SUPPLIES FOR CHILDREN SUPPLIED THROUGH LGK



SRI LANKA

Through a Catholic charity institution LGK aim to support in supplying funds for educational resources in Sri Lanka for children in areas of extreme poverty with a thirst to learn.

OVER 100 BOOKS AND SCHOOL ESSENTIALS SUPPLIED THROUGH LGK

Spread the Love

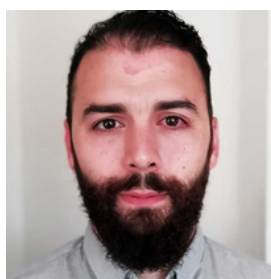
Educational Support Scheme

MELETIUS
Speciality Coffee Roasters

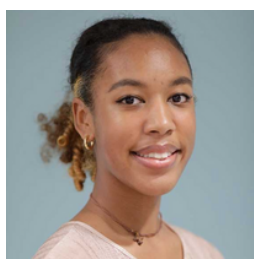


In partnership with our sponsors, we have a unique educational sponsorship programme in which we support a limited no of students annually with expenses associated with their studies. Our three sucessful students for our 2023 program are:

CURRENT STUDENT POOLE

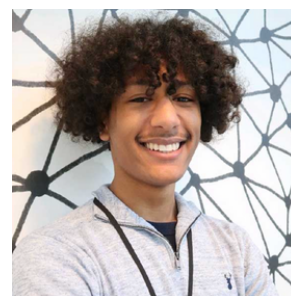


Gregory Craveiro
PhD Theology



Chyssie Alexiou
MSc Child Psychology

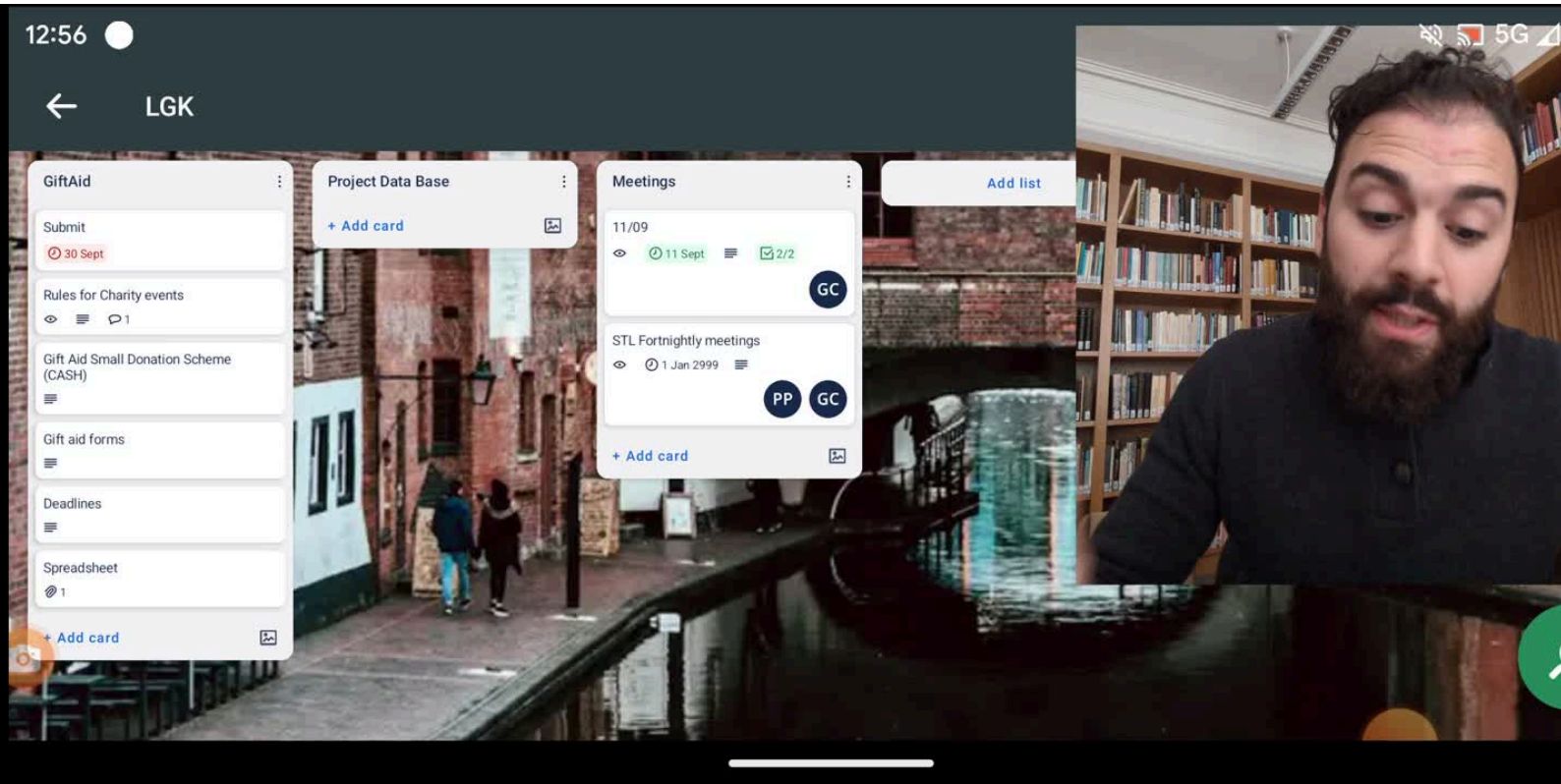
PREVIOUS STUDENTS



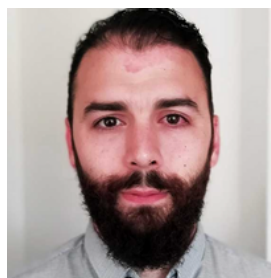
Erikkos Alexiou
BSc Cyber Security

Spread the Love

Educational Support Scheme



CURRENT STUDENT POOLE



Gregory Craveiro
PhD Theology

SUSTAINABLE FOOD SYSTEMS

From concluding the key findings and analysing the community and key stakeholder intelligence the proposed way forward has been analysed in three tiers:

Tear 1 - A flat pack build supermarket or HQ that can store goods for the other tiers offer a holistic space for food education and be a one stop shop for those in need. The model needs to lean on community being one of the assets of sustainability and work off some of the most successful social supermarket model internationally which is a membership scheme. In paying. fee to join or dedicating you fee in time to the market this forms a sustainable operating model moving forward.



Tear 2 - Create a hot food HUB in Erdington in which families can access breakfast and dinner for a minimal capped price no matter the number in the family unit. This will work from Monday -Friday and on the weekend will be substituted with a recipe offer covering a family unit for the weekend feed, Cooking demos and cooking courses will be offered at the HUB and the supermarket.



Tear 3 - In terms of the Handsworth food HUB there seems to be alot of newly arrived communities in the area in which a wiery and reluctant to sign up for support service outside the school circle. The food bank scheme there is actually managed through school referral and as a trusted space schools have been highted as a prime location for a mobile social supermarket. This will be from produce decanted and culturally sensitive supplied and acquired through the HQ social supermarket.



I'M DREAMING OF A

Hunger free City



Big Christmas Feed 2023



Over 120 families

RECEIVED 1X WEEKS SHOPPING

LGK ANNUAL PROGRAMME

£1000 RAISED FOR FINNLEYS SENSORY ROOM



LAKIS GREEK
KITCHEN
SEASON 11
DONATIONS
RAISED OVER
£14,000 IN 6
WEEKS

FOOD BANK OPERATION
HAOS over 2200 family
parcels 2023/24



SUPPORTED 15 FAMILIES IN
CRISIS DURING THE 2023/24
PROGRAMME



LGK POP UP EVENTS
LAUNCHED 2023/4 4x
CALENDAR EVENTS



LAKIS GREEK KITCHEN MAKES INTERNATIONAL AND NATIONAL NEWS



Ο ΦΙΛΕΛΕΥΘΕΡΟΣ



2023/24

ANNUAL FINANCIAL REPORT



FINANCIAL SUMMARY HIGHLIGHTS

39%

INCOME FROM COMMISSIONED SERVICES OR
FUNDRAISING

71%

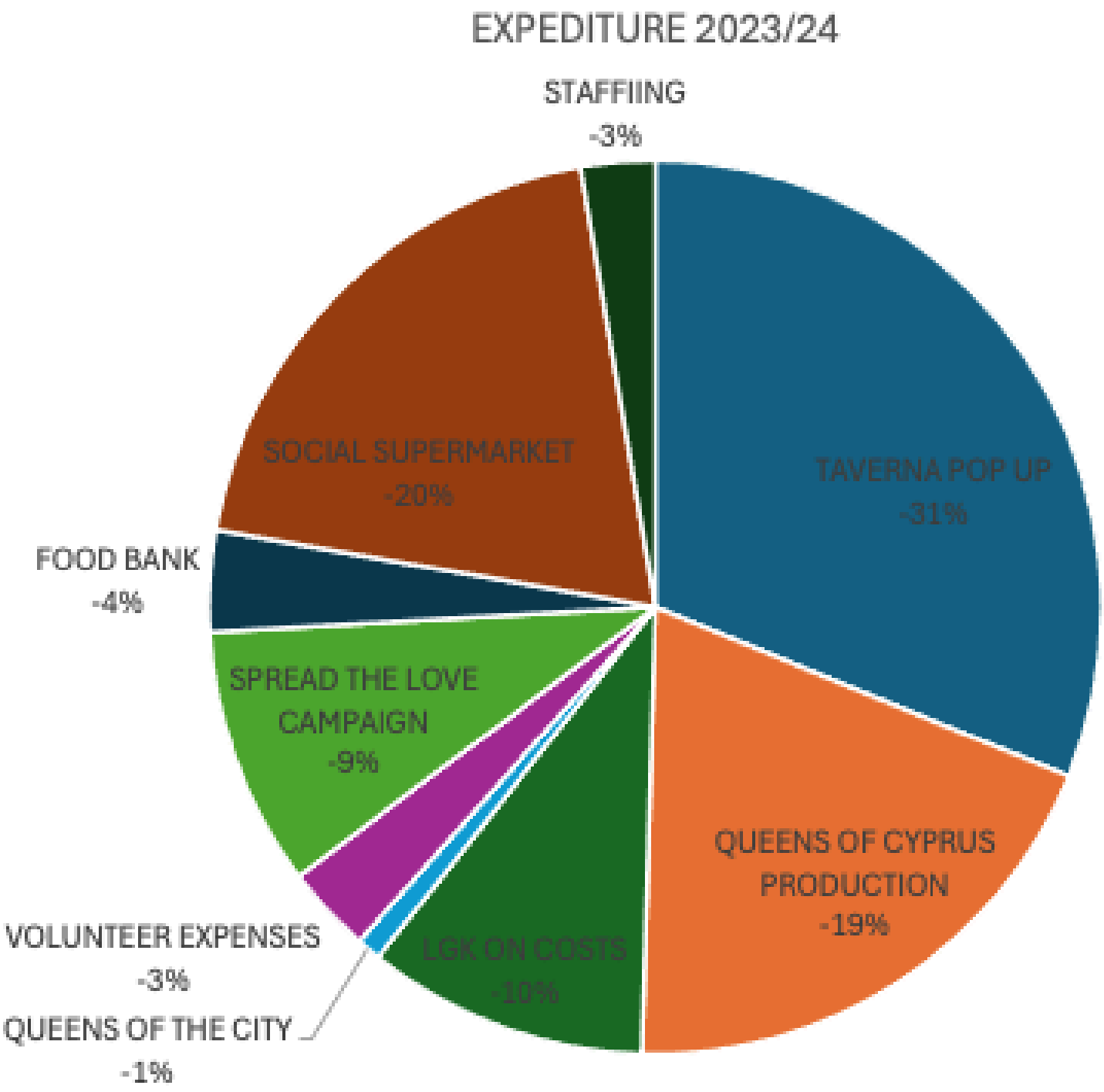
Increase in external grants

53%

INCREASE IN ANNUAL TURNOVER IN
COMPARISON TO 2023/24

EXPENDITURE CHART

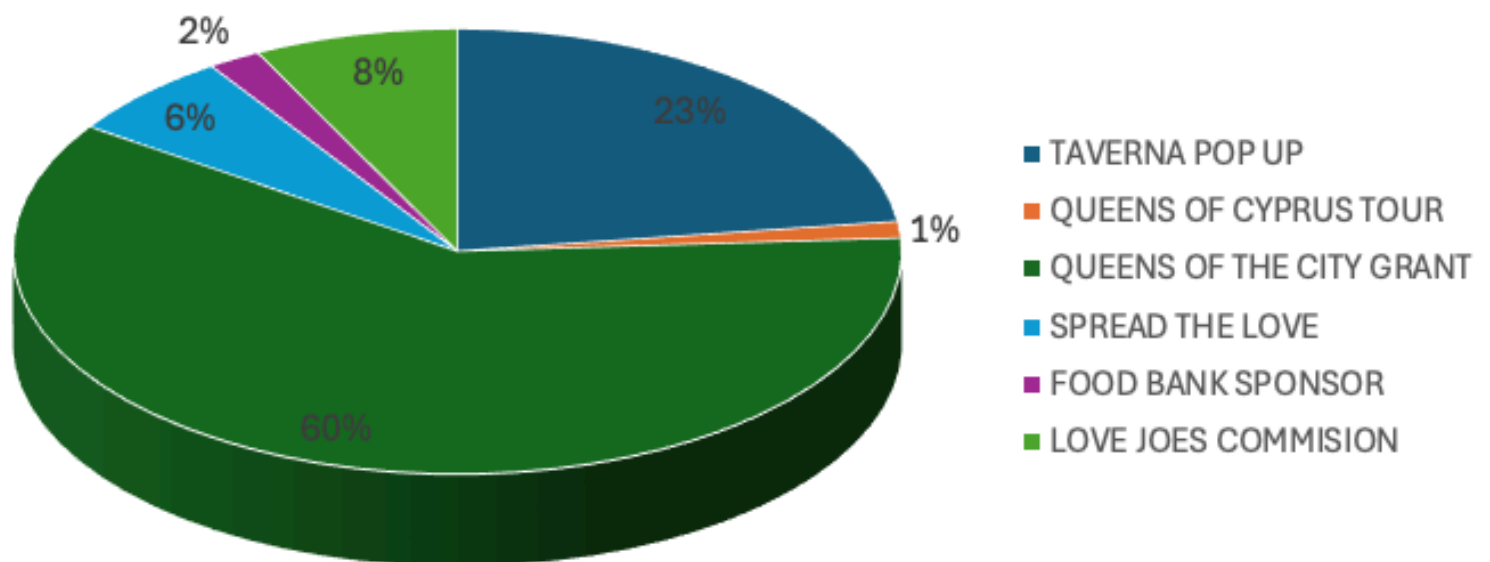
£111,853



INCOME CHART

£161,531

INCOME 2023/24



INCOME & EXPENDITURE STATEMENT

Opening balance 01/11/2023: £86,668

ITEM	INCOME	EXPENDITURE
ONCOSTS	N/A	£11,370
QUEENS of CYPRUS PRODUCTION	£1930	£21,606
SUPERMARKET	N/A	£21,850
TAVERNA	£36,921	£34,875
QUEENS OF THE CITY	£97,579	£997
VOLUNTEERS	N/A	£3539
SPREAD THE LOVE	£10,000	£10,500
FOOD BANK	£3100	£4114
STAFFING	N/A	£3000
TOTALS	£161,531	£111,853

Closing balance 31/10/2024: £149, 129.98

OUR 2024/25 ONWARDS STRATEGY

PROJECTS	DETAILS	OUTCOME
SUPERMARKET	TACKLE FOOD CRISIS AND A BROKEN FOOD SYSTEM	<ul style="list-style-type: none">• Start mobile pop up market• Create a mobile food school
XMAS BIG FEED	CATER FOR HOLIDAY HUNGER	<ul style="list-style-type: none">• CATER FOR OVER 600 FAMILIES FOR 2024 PROGRAMME
BE CREATIVE	To continue the journey of preserving history and protecting stories from being lost in time.	<ul style="list-style-type: none">• Broadcast Queens of Cyprus• Create educational programme with assets UK/Europe• Produce an animation of Queens of the Commonwealth for schools
LGK EVENTS	Launch LGK pop events across the UK	<ul style="list-style-type: none">• Create a well known brand• Create an active events calender outside of the taverna.
QUEENS OF THE CITY	Legacy programme of Queens series productions	<ul style="list-style-type: none">• Establish a solid model of practice trailed and tested in Walsall MBC• Upscale the scheme to other cities in England• Upscale the programme accross Europe.• Create an Erasmus scheme based on the QoC model.

#HELPUSEHELPOTHERS

OUR 2024/25 ONWARDS

**Who are they?**

Lakis Greek kitchen also known as "LGK in the community", is a registered UK charity which supports individuals and families in need, through food and celebrates culture and heritage.

The charity runs a range of community outreach programmes including food, education, welfare support, a weekly foodbank, a festive foodbank and a rainy-day fund, supporting people in immediate need within the Aldridge, Walsall and surrounding area.



**Resident charity announcement
LGK in the community**

LGK in the community

Most well known for fundraising pop up Greek Taverna

Lakis Kitchen open for 6 weeks of the year Fundraising for the local communities

**ANNUAL EVENTS PROGRAMME**

Outreach Schemes

Clinical support

Sat 15th of February 2025

Kleftiko night

Sat 19th of July 2025

Greek BBQ

SAVE THE DATE

'tis the season

FOR GIVING

VOLUNTEER OPPORTUNITIES

PROJECT	DESCRIPTION	OPPORTUNITY
SOCIAL MEDIA	SOCIAL MEDIA OFFICER FOR ALL OF THE LGK PORTFOLIO X2 POSITIONS	WORK WITH LGK ON OUR SOCIAL MEDIA CHANNELS INCLUSIVE OF TIK TOK, FACEBOOK, INSTAGRAM AND MORE
LGK EVENTS	STALL STAFF, FOOD SERVICE EVENTS MANAGEMENT	WORK WITH THE LGK FOOD TEAM TO DELIVER QUALITY EVENTS IN AND AROUND THE REGION
FOOD BANK	FUNDRAISING AND CORPORATE LIASON OFFICER X2 POSITIONS	WORK WITH THE LGK FOODBANK TEAM TO SECURE SPONSORSHIP, FOOD SUPPORT FOR THOSE THAT NEED IT MOST
BE CREATIVE	EDITORS AND MEDIA ASSETS VOLUNTEERS X2	WORK WITH OUR BE CREATIVE PRODUCTION TEAM TO CREATE ONLINE CONTENT AND MEDIA ASSETS
CELEBRATE HERITAGE	HERITAGE RESEARCHERS X2	HELP FIND QUEENS IN WALSALL WITH A STORY TO TELL THAT IS AT RISK OF BEING LOST IN TIME

REGISTERED COMPANY NUMBER: 10418907 (England and Wales)
REGISTERED CHARITY NUMBER: 1182273

**REPORT OF THE TRUSTEES AND
UNAUDITED FINANCIAL STATEMENTS
FOR THE YEAR ENDED 31 OCTOBER 2024
FOR
LGK IN THE COMMUNITY
(A COMPANY LIMITED BY GUARANTEE)**

Michael Filiou Ltd
Chartered Certified Accountants
www.michaelfiliou.com
Salisbury House
81 High Street
Potters Bar
Hertfordshire
EN6 5AS

LGK IN THE COMMUNITY
CONTENTS OF THE FINANCIAL STATEMENTS
FOR THE YEAR ENDED 31 OCTOBER 2024

	Page
Report of the Trustees	1 to 4
Independent Examiner's Report	5
Statement of Financial Activities	6
Statement of Financial Position	7 to 8
Notes to the Financial Statements	9 to 16
Detailed Statement of Financial Activities	17

LGK IN THE COMMUNITY
REPORT OF THE TRUSTEES
FOR THE YEAR ENDED 31 OCTOBER 2024

The trustees who are also directors of the charity for the purposes of the Companies Act 2006, present their report with the financial statements of the charity for the year ended 31 October 2024. The trustees have adopted the provisions of Accounting and Reporting by Charities: Statement of Recommended Practice applicable to charities preparing their accounts in accordance with the Financial Reporting Standard applicable in the UK and Republic of Ireland (FRS 102) (effective 1 January 2019).

OBJECTIVES AND ACTIVITIES

Objectives and aims

Vision

To bring communities closer together by developing a shared understanding of the role different groups and individuals have had in shaping today's society.

Mission

To promote cohesion between and within communities, at a neighbourhood level and globally, by highlighting the historic contributions made by a variety of communities

To work with young people and the community at large to address wellbeing, health inequalities, food poverty and social cohesion

To use the 'arts', culture, 'sport' and other tools to engage with people.

Aim

To explore, record, preserve and share the individual and collective heritage of groups and individuals. To develop initiatives to improve people's wellbeing.

Objectives

The prevention and relief of poverty for the public benefit in Birmingham by providing donations of food for local food banks.

The advancement of education for the public benefit in Birmingham by providing workshops relating to healthy eating and nutrition, cooking on a budget and health and safety procedures in the handling and preparation of food.

For the public benefit to promote the relief of elderly people resident in Birmingham by providing a befriending service and group opportunities for social contact and interaction designed to relieve social isolation and loneliness.

Significant activities

To advance the education for the public benefit in all aspects of the culture, arts, wellbeing, heritage and social history, including those that are disadvantaged from different racial groups in the West Midlands and globally. In so doing promoting the cohesion between and within such groups.

Delivering healthy cooked food around the city using a vehicle as a portable kitchen. The vehicle is also used to collect and distribute food for the food bank element of the organisation. The vehicle is to be owned by the charity, LGK. All the funding and donations received will be applied for the charitable purposes only. Food may be prepared in the kitchen facility provided free of charge by the charity's supporters at their residences or other venues where an event is organised.

Teaching how to cook healthy meals for the community to promote good health as well as the organisation of food banks which will assist some of the needy communities in the city as well as the country.

Grantmaking

The Trustees consider applications received for grant and approve on the merits and objectives for which such grants may be used for.

LGK IN THE COMMUNITY
REPORT OF THE TRUSTEES
FOR THE YEAR ENDED 31 OCTOBER 2024

OBJECTIVES AND ACTIVITIES

Volunteers

The value of services provided by volunteers is not incorporated in these financial statements. However, payments are made to cover the volunteers' actual expenses which are included in the financial statements.

ACHIEVEMENT AND PERFORMANCE

Charitable activities

Providing food banks and education in respect of healthy diets. Organising food based events in order to raise funds for the charity which is used to help those in need of nutritional education and adequate food provision.

Delivering healthy cooked food around the city using a vehicle as a portable kitchen. The vehicle is also used to collect and distribute food for the food bank element of the organisation.

Teaching how to cook healthy meals for the community to promote good health as well as the organisation of food banks which will assist some of the needy communities in the city as well as the country.

Fundraising activities

Organising Pop-up Taverna and serving healthy meals to generate donations.

Publishing and selling book relating to the evolution of Greek Cypriot cuisine into British society.

FINANCIAL REVIEW

Principal funding sources

The future of Charity's services is dependent on continued support from statutory sources and income from grants and donations, which are essential for the maintenance and expansion of services to meet the increasing demand.

The Charity provides essential services and develops unique training projects that help to profile/meet the needs of the public and is supported in part by Local Authority, Big Lottery Fund and Heritage Lottery Fund. Although such funding continues, demand for projects, services, and an increase in core costs considerably outweighs the funding provided by these sources, to the extent that the Charity has to continually look for funding from other organisations, charitable and corporate bodies and individual donors.

Reserves policy

The Board of Trustees is responsible for deciding how to invest the Charity's reserves. The appropriate level of reserves is established through an annual review of the Charity's requirements and stated in the financial report. The Treasurer is responsible for proposing to the Board the balance of cash on deposit and investments, and acts on the Board's instructions.

Taking into account the impact on future grants and donations receivable, the trustees may have to limit the charity's activities within the reserves available.

Review of transactions, financial performance and funds

As shown in the Statement of Financial Activities (page 6) total income for the period to 31 October 2024 amounted to £161,846. Expenditure in the furtherance of charitable activities totalled £103,396. The Charity resulted in a Net resources surplus of £58,450.

FUTURE PLANS

In light of the current economical climate the organisation will review its business plan / operational model to help it ensure sustainability and will make any changes needed. It remains committed to supporting the primary beneficiaries of our activities and services and will aim to continue delivery of a programme of key activities and associated services.

The organisation plans to continue working strategically to help achieve our objectives.

LGK IN THE COMMUNITY
REPORT OF THE TRUSTEES
FOR THE YEAR ENDED 31 OCTOBER 2024

STRUCTURE, GOVERNANCE AND MANAGEMENT

Governing document

The charity is controlled by its governing document, a deed of trust, and constitutes a limited company, limited by guarantee, as defined by the Companies Act 2006.

Recruitment and appointment of new trustees

Every person who wishes to be a Member and a trustee as such, shall deliver to the Company an application for membership in such form as the Directors require executed by that person.

At the next meeting of the Directors after the receipt of any application for membership, the application shall be considered by the Directors who shall decide upon the admission or rejection of the applicant.

Organisational structure

The Charity has a Management Committee of up to six members who meet regularly and are responsible for strategic direction and policy of the charity. At present the committee has six members from a variety of backgrounds relevant to the work of the charity. The committee is made up of the trustees.

A scheme of delegation is in place and day to day responsibility for the provision of services rest with the trustees.. The trustees are responsible for ensuring that the charity delivers the services specified and that key performance indicators are met.

Induction and training of new trustees

New trustees receive a comprehensive induction package, with information covering the duties of a trustee, a trustee job description and service agreement, an outline of the vision, mission and implementation of the charity's services, the latest Report and Accounts, current year's budget and latest management accounts.

Trustees are encouraged to make use of the training and conference opportunities provided by the NVCO and other bodies.

Risk management

The trustees have a duty to identify and review the risks to which the charity is exposed and to ensure appropriate controls are in place to provide reasonable assurance against fraud and error.

REFERENCE AND ADMINISTRATIVE DETAILS

Registered Company number

10418907 (England and Wales)

Registered Charity number

1182273

Registered office

Nash Dom Community Hub
Sun Street
Walsall
WS1 4AL

Trustees

Mrs L Malla Trustee
Mrs O Hazell Trustee
Mr Y K Gupta Trustee

LGK IN THE COMMUNITY
REPORT OF THE TRUSTEES
FOR THE YEAR ENDED 31 OCTOBER 2024

REFERENCE AND ADMINISTRATIVE DETAILS

Independent Examiner

Michael Filiou Ltd
Chartered Certified Accountants
www.michaelfiliou.com
Salisbury House
81 High Street
Potters Bar
Hertfordshire
EN6 5AS

This report has been prepared in accordance with the special provisions of Part 15 of the Companies Act 2006 relating to small companies.

Approved by order of the board of trustees on 22 July 2025 and signed on its behalf by:

Mrs O Hazell - Trustee

INDEPENDENT EXAMINER'S REPORT TO THE TRUSTEES OF LGK IN THE COMMUNITY

Independent examiner's report to the trustees of LGK In The Community ('the Company')

I report to the charity trustees on my examination of the accounts of the Company for the year ended 31 October 2024.

Responsibilities and basis of report

As the charity's trustees of the Company (and also its directors for the purposes of company law) you are responsible for the preparation of the accounts in accordance with the requirements of the Companies Act 2006 ('the 2006 Act').

Having satisfied myself that the accounts of the Company are not required to be audited under Part 16 of the 2006 Act and are eligible for independent examination, I report in respect of my examination of your charity's accounts as carried out under Section 145 of the Charities Act 2011 ('the 2011 Act'). In carrying out my examination I have followed the Directions given by the Charity Commission under Section 145(5) (b) of the 2011 Act.

Independent examiner's statement

I have completed my examination. I confirm that no matters have come to my attention in connection with the examination giving me cause to believe:

1. accounting records were not kept in respect of the Company as required by Section 386 of the 2006 Act; or
2. the accounts do not accord with those records; or
3. the accounts do not comply with the accounting requirements of Section 396 of the 2006 Act other than any requirement that the accounts give a true and fair view which is not a matter considered as part of an independent examination; or
4. the accounts have not been prepared in accordance with the methods and principles of the Statement of Recommended Practice for accounting and reporting by charities (applicable to charities preparing their accounts in accordance with the Financial Reporting Standard applicable in the UK and Republic of Ireland (FRS 102)).

I have no concerns and have come across no other matters in connection with the examination to which attention should be drawn in this report in order to enable a proper understanding of the accounts to be reached.

Mr Michael Filiou FCCA

Michael Filiou Ltd
Chartered Certified Accountants
www.michaelfiliou.com
Salisbury House
81 High Street
Potters Bar
Hertfordshire
EN6 5AS

22 July 2025

LGK IN THE COMMUNITY

STATEMENT OF FINANCIAL ACTIVITIES FOR THE YEAR ENDED 31 OCTOBER 2024

		Unrestricted fund £	Restricted funds £	2024 Total funds £	2023 Total funds £
	Notes				
INCOME AND ENDOWMENTS FROM					
Donations and legacies	2	<u>24,231</u>	<u>137,615</u>	<u>161,846</u>	<u>86,466</u>
EXPENDITURE ON					
Charitable activities	3				
Food Bank		-	13,190	13,190	10,743
Donations		10,895	4,314	15,209	31,772
Publication Cost		7,575	-	7,575	9,200
Travelling Expense		5,324	575	5,899	5,809
Project Management		25,153	30,488	55,641	38,278
Other		<u>1,371</u>	<u>4,511</u>	<u>5,882</u>	<u>7,565</u>
Total		<u>50,318</u>	<u>53,078</u>	<u>103,396</u>	<u>103,367</u>
NET INCOME/(EXPENDITURE)		(26,087)	84,537	58,450	(16,901)
RECONCILIATION OF FUNDS					
Total funds brought forward		<u>27,066</u>	<u>75,048</u>	<u>102,114</u>	<u>119,015</u>
TOTAL FUNDS CARRIED FORWARD		<u><u>979</u></u>	<u><u>159,585</u></u>	<u><u>160,564</u></u>	<u><u>102,114</u></u>

The notes form part of these financial statements

LGK IN THE COMMUNITY
STATEMENT OF FINANCIAL POSITION
31 OCTOBER 2024

	Notes	Unrestricted fund £	Restricted funds £	2024 Total funds £	2023 Total funds £
FIXED ASSETS					
Tangible assets	9	-	12,032	12,032	16,043
CURRENT ASSETS					
Cash at bank		1,579	178,755	180,334	96,023
CREDITORS					
Amounts falling due within one year	10	(600)	(31,202)	(31,802)	(9,952)
NET CURRENT ASSETS		979	147,553	148,532	86,071
TOTAL ASSETS LESS CURRENT LIABILITIES		979	159,585	160,564	102,114
NET ASSETS		979	159,585	160,564	102,114
FUNDS	12				
Unrestricted funds				979	27,066
Restricted funds				159,585	75,048
TOTAL FUNDS				160,564	102,114

The charitable company is entitled to exemption from audit under Section 477 of the Companies Act 2006 for the year ended 31 October 2024.

The members have not required the company to obtain an audit of its financial statements for the year ended 31 October 2024 in accordance with Section 476 of the Companies Act 2006.

The trustees acknowledge their responsibilities for

- (a) ensuring that the charitable company keeps accounting records that comply with Sections 386 and 387 of the Companies Act 2006 and
- (b) preparing financial statements which give a true and fair view of the state of affairs of the charitable company as at the end of each financial year and of its surplus or deficit for each financial year in accordance with the requirements of Sections 394 and 395 and which otherwise comply with the requirements of the Companies Act 2006 relating to financial statements, so far as applicable to the charitable company.

The notes form part of these financial statements

LGK IN THE COMMUNITY

STATEMENT OF FINANCIAL POSITION - continued
31 OCTOBER 2024

These financial statements have been prepared in accordance with the provisions applicable to charitable companies subject to the small companies regime.

The financial statements were approved by the Board of Trustees and authorised for issue on 22 July 2025 and were signed on its behalf by:

Mrs O Hazell - Trustee

The notes form part of these financial statements

LGK IN THE COMMUNITY

NOTES TO THE FINANCIAL STATEMENTS FOR THE YEAR ENDED 31 OCTOBER 2024

1. ACCOUNTING POLICIES

Basis of preparing the financial statements

The financial statements of the charitable company, which is a public benefit entity under FRS 102, have been prepared in accordance with the Charities SORP (FRS 102) 'Accounting and Reporting by Charities: Statement of Recommended Practice applicable to charities preparing their accounts in accordance with the Financial Reporting Standard applicable in the UK and Republic of Ireland (FRS 102) (effective 1 January 2019)', Financial Reporting Standard 102 'The Financial Reporting Standard applicable in the UK and Republic of Ireland' and the Companies Act 2006. The financial statements have been prepared under the historical cost convention.

Income

All income is recognised in the Statement of Financial Activities once the charity has entitlement to the funds, it is probable that the income will be received and the amount can be measured reliably.

Expenditure

Liabilities are recognised as expenditure as soon as there is a legal or constructive obligation committing the charity to that expenditure, it is probable that a transfer of economic benefits will be required in settlement and the amount of the obligation can be measured reliably. Expenditure is accounted for on an accruals basis and has been classified under headings that aggregate all cost related to the category. Where costs cannot be directly attributed to particular headings they have been allocated to activities on a basis consistent with the use of resources.

Grants offered subject to conditions which have not been met at the year end date are noted as a commitment but not accrued as expenditure.

Tangible fixed assets

Depreciation is provided at the following annual rates in order to write off each asset over its estimated useful life.

Motor vehicles	- 25% on reducing balance
Computer equipment	- 25% on reducing balance

Taxation

The charity is exempt from corporation tax on its charitable activities.

Fund accounting

Unrestricted funds can be used in accordance with the charitable objectives at the discretion of the trustees.

Restricted funds can only be used for particular restricted purposes within the objects of the charity. Restrictions arise when specified by the donor or when funds are raised for particular restricted purposes.

Further explanation of the nature and purpose of each fund is included in the notes to the financial statements.

LGK IN THE COMMUNITY

NOTES TO THE FINANCIAL STATEMENTS - continued FOR THE YEAR ENDED 31 OCTOBER 2024

2. DONATIONS AND LEGACIES

	2024	2023
	£	£
Donations	64,267	44,791
Grants	97,579	41,675
	<u>161,846</u>	<u>86,466</u>

Grants received, included in the above, are as follows:

	2024	2023
	£	£
Heritage Lottery	97,579	-
Queen of Commonwealth	-	100
Holiday Activity Fund	-	6,141
Queens of Amathus	-	684
National Lottery SSM	-	34,750
	<u>97,579</u>	<u>41,675</u>

3. CHARITABLE ACTIVITIES COSTS

	Direct Costs £	Grant funding of activities (see note 4) £	Totals £
Food Bank	13,190	-	13,190
Donations	-	15,209	15,209
Publication Cost	7,575	-	7,575
Travelling Expense	5,899	-	5,899
Project Management	55,641	-	55,641
	<u>82,305</u>	<u>15,209</u>	<u>97,514</u>

LGK IN THE COMMUNITY

NOTES TO THE FINANCIAL STATEMENTS - continued FOR THE YEAR ENDED 31 OCTOBER 2024

4. GRANTS PAYABLE

	2024	2023
	£	£
Donations	<u>15,209</u>	<u>31,772</u>

5. NET INCOME/(EXPENDITURE)

Net income/(expenditure) is stated after charging/(crediting):

	2024	2023
	£	£
Depreciation - owned assets	<u>4,011</u>	<u>5,349</u>

6. TRUSTEES' REMUNERATION AND BENEFITS

There were no trustees' remuneration or other benefits for the year ended 31 October 2024 nor for the year ended 31 October 2023.

Trustees' expenses

There were no trustees' expenses paid for the year ended 31 October 2024 nor for the year ended 31 October 2023.

7. STAFF COSTS

The average number of employees for the year is 0 (2021 - 0).

8. COMPARATIVES FOR THE STATEMENT OF FINANCIAL ACTIVITIES

	Unrestricted fund £	Restricted funds £	Total funds £
INCOME AND ENDOWMENTS FROM			
Donations and legacies	<u>16,500</u>	<u>69,966</u>	<u>86,466</u>
EXPENDITURE ON			
Charitable activities			
Food Bank	433	10,310	10,743
Donations	8,500	23,272	31,772
Publication Cost	5,000	4,200	9,200
Travelling Expense	5,276	533	5,809
Project Management	15,212	23,066	38,278
Other	<u>1,366</u>	<u>6,199</u>	<u>7,565</u>
Total	<u>35,787</u>	<u>67,580</u>	<u>103,367</u>
NET INCOME/(EXPENDITURE)	(19,287)	2,386	(16,901)

LGK IN THE COMMUNITY

**NOTES TO THE FINANCIAL STATEMENTS - continued
FOR THE YEAR ENDED 31 OCTOBER 2024**

8. COMPARATIVES FOR THE STATEMENT OF FINANCIAL ACTIVITIES - continued

	Unrestricted fund £	Restricted funds £	Total funds £
RECONCILIATION OF FUNDS			
Total funds brought forward	46,355	72,660	119,015
TOTAL FUNDS CARRIED FORWARD	<u>27,068</u>	<u>75,046</u>	<u>102,114</u>

9. TANGIBLE FIXED ASSETS

	Motor vehicles £	Computer equipment £	Totals £
COST			
At 1 November 2023 and 31 October 2024	<u>34,438</u>	<u>4,661</u>	<u>39,099</u>
DEPRECIATION			
At 1 November 2023	<u>19,910</u>	<u>3,146</u>	<u>23,056</u>
Charge for year	<u>3,632</u>	<u>379</u>	<u>4,011</u>
At 31 October 2024	<u>23,542</u>	<u>3,525</u>	<u>27,067</u>
NET BOOK VALUE			
At 31 October 2024	<u>10,896</u>	<u>1,136</u>	<u>12,032</u>
At 31 October 2023	<u>14,528</u>	<u>1,515</u>	<u>16,043</u>

10. CREDITORS: AMOUNTS FALLING DUE WITHIN ONE YEAR

	2024	2023
	£	£
Bank loans and overdrafts (see note 11)	<u>31,202</u>	9,352
Accruals and deferred income	<u>600</u>	600
	<u>31,802</u>	<u>9,952</u>

LGK IN THE COMMUNITY

NOTES TO THE FINANCIAL STATEMENTS - continued FOR THE YEAR ENDED 31 OCTOBER 2024

11. LOANS

An analysis of the maturity of loans is given below:

	2024 £	2023 £
Amounts falling due within one year on demand:		
Bank overdrafts	31,202	9,352

12. MOVEMENT IN FUNDS

	At 1.11.23 £	Net movement in funds £	At 31.10.24 £
Unrestricted funds			
General fund	27,066	(26,087)	979
Restricted funds			
Festive Food Bank	10,168	(214)	9,954
Amathus to Birmingham	926	(52)	874
Taverna Pop Up	24,202	10,398	34,600
Queens of Amathus	21,588	-	21,588
Queen of Commonwealth	367	(327)	40
Holiday Activity Fund	21,242	-	21,242
Celebrating Community Fund	4,967	-	4,967
National Lottery SSM	(8,412)	(21,850)	(30,262)
Queen of City	-	96,582	96,582
	75,048	84,537	159,585
TOTAL FUNDS	102,114	58,450	160,564

LGK IN THE COMMUNITY

**NOTES TO THE FINANCIAL STATEMENTS - continued
FOR THE YEAR ENDED 31 OCTOBER 2024**

12. MOVEMENT IN FUNDS - continued

Net movement in funds, included in the above are as follows:

	Incoming resources £	Resources expended £	Movement in funds £
Unrestricted funds			
General fund	24,231	(50,318)	(26,087)
Restricted funds			
Festive Food Bank	3,900	(4,114)	(214)
Amathus to Birmingham	-	(52)	(52)
Taverna Pop Up	36,136	(25,738)	10,398
Queen of Commonwealth	-	(327)	(327)
National Lottery SSM	-	(21,850)	(21,850)
Queen of City	97,579	(997)	96,582
	<u>137,615</u>	<u>(53,078)</u>	<u>84,537</u>
TOTAL FUNDS	<u>161,846</u>	<u>(103,396)</u>	<u>58,450</u>

Comparatives for movement in funds

	At 1.11.22 £	Net movement in funds £	At 31.10.23 £
Unrestricted funds			
General fund	46,355	(19,289)	27,066
Restricted funds			
Festive Food Bank	6,690	3,478	10,168
Amathus to Birmingham	995	(69)	926
Taverna Pop Up	19,372	4,830	24,202
Queens of Amathus	20,105	1,483	21,588
Queen of Commonwealth	1,743	(1,376)	367
Holiday Activity Fund	18,788	2,454	21,242
Celebrating Community Fund	4,967	-	4,967
National Lottery SSM	-	(8,412)	(8,412)
	<u>72,660</u>	<u>2,388</u>	<u>75,048</u>
TOTAL FUNDS	<u>119,015</u>	<u>(16,901)</u>	<u>102,114</u>

LGK IN THE COMMUNITY

**NOTES TO THE FINANCIAL STATEMENTS - continued
FOR THE YEAR ENDED 31 OCTOBER 2024**

12. MOVEMENT IN FUNDS - continued

Comparative net movement in funds, included in the above are as follows:

	Incoming resources £	Resources expended £	Movement in funds £
Unrestricted funds			
General fund	16,500	(35,789)	(19,289)
Restricted funds			
Festive Food Bank	4,799	(1,321)	3,478
Amathus to Birmingham	1	(70)	(69)
Taverna Pop Up	23,492	(18,662)	4,830
Queens of Amathus	684	799	1,483
Queen of Commonwealth	100	(1,476)	(1,376)
Holiday Activity Fund	6,141	(3,687)	2,454
National Lottery SSM	34,749	(43,161)	(8,412)
	<u>69,966</u>	<u>(67,578)</u>	<u>2,388</u>
TOTAL FUNDS	<u>86,466</u>	<u>(103,367)</u>	<u>(16,901)</u>

A current year 12 months and prior year 12 months combined position is as follows:

	At 1.11.22 £	Net movement in funds £	At 31.10.24 £
Unrestricted funds			
General fund	46,355	(45,376)	979
Restricted funds			
Festive Food Bank	6,690	3,264	9,954
Amathus to Birmingham	995	(121)	874
Taverna Pop Up	19,372	15,228	34,600
Queens of Amathus	20,105	1,483	21,588
Queen of Commonwealth	1,743	(1,703)	40
Holiday Activity Fund	18,788	2,454	21,242
Celebrating Community Fund	4,967	-	4,967
National Lottery SSM	-	(30,262)	(30,262)
Queen of City	-	96,582	96,582
	<u>72,660</u>	<u>86,925</u>	<u>159,585</u>
TOTAL FUNDS	<u>119,015</u>	<u>41,549</u>	<u>160,564</u>

LGK IN THE COMMUNITY

NOTES TO THE FINANCIAL STATEMENTS - continued FOR THE YEAR ENDED 31 OCTOBER 2024

12. MOVEMENT IN FUNDS - continued

A current year 12 months and prior year 12 months combined net movement in funds, included in the above are as follows:

	Incoming resources £	Resources expended £	Movement in funds £
Unrestricted funds			
General fund	40,731	(86,107)	(45,376)
Restricted funds			
Festive Food Bank	8,699	(5,435)	3,264
Amathus to Birmingham	1	(122)	(121)
Taverna Pop Up	59,628	(44,400)	15,228
Queens of Amathus	684	799	1,483
Queen of Commonwealth	100	(1,803)	(1,703)
Holiday Activity Fund	6,141	(3,687)	2,454
National Lottery SSM	34,749	(65,011)	(30,262)
Queen of City	97,579	(997)	96,582
	<u>207,581</u>	<u>(120,656)</u>	<u>86,925</u>
TOTAL FUNDS	<u>248,312</u>	<u>(206,763)</u>	<u>41,549</u>

13. RELATED PARTY DISCLOSURES

There were no related party transactions for the year ended 31 October 2024.

LGK IN THE COMMUNITY

DETAILED STATEMENT OF FINANCIAL ACTIVITIES FOR THE YEAR ENDED 31 OCTOBER 2024

	2024 £	2023 £
INCOME AND ENDOWMENTS		
Donations and legacies		
Donations	64,267	44,791
Grants	97,579	41,675
	<u>161,846</u>	<u>86,466</u>
Total incoming resources	161,846	86,466
EXPENDITURE		
Charitable activities		
Rates and water	168	105
Project management costs	47,709	36,804
Volunteer expenses	4,676	1,300
Motor and travelling expenses	5,899	5,809
Publication costs	7,575	9,200
Food and material costs	13,190	10,743
Telephone expense	28	43
Legal and Professional	3,060	26
Grants to institutions	3,814	28,272
Grants to individuals	11,395	3,500
	<u>97,514</u>	<u>95,802</u>
Other		
Motor vehicles	3,632	4,843
Computer equipment	379	506
	<u>4,011</u>	<u>5,349</u>
Support costs		
Management		
Website and IT expenses	1,871	2,216
	<u>103,396</u>	<u>103,367</u>
Total resources expended	103,396	103,367
Net income/(expenditure)	<u>58,450</u>	<u>(16,901)</u>

This page does not form part of the statutory financial statements

REGISTERED COMPANY NUMBER: 10418907 (England and Wales)
REGISTERED CHARITY NUMBER: 1182273

**REPORT OF THE TRUSTEES AND
UNAUDITED FINANCIAL STATEMENTS
FOR THE YEAR ENDED 31 OCTOBER 2024
FOR
LGK IN THE COMMUNITY
(A COMPANY LIMITED BY GUARANTEE)**

Michael Filiou Ltd
Chartered Certified Accountants
www.michaelfiliou.com
Salisbury House
81 High Street
Potters Bar
Hertfordshire
EN6 5AS

LGK IN THE COMMUNITY
CONTENTS OF THE FINANCIAL STATEMENTS
FOR THE YEAR ENDED 31 OCTOBER 2024

	Page
Report of the Trustees	1 to 4
Independent Examiner's Report	5
Statement of Financial Activities	6
Statement of Financial Position	7 to 8
Notes to the Financial Statements	9 to 16
Detailed Statement of Financial Activities	17

LGK IN THE COMMUNITY
REPORT OF THE TRUSTEES
FOR THE YEAR ENDED 31 OCTOBER 2024

The trustees who are also directors of the charity for the purposes of the Companies Act 2006, present their report with the financial statements of the charity for the year ended 31 October 2024. The trustees have adopted the provisions of Accounting and Reporting by Charities: Statement of Recommended Practice applicable to charities preparing their accounts in accordance with the Financial Reporting Standard applicable in the UK and Republic of Ireland (FRS 102) (effective 1 January 2019).

OBJECTIVES AND ACTIVITIES

Objectives and aims

Vision

To bring communities closer together by developing a shared understanding of the role different groups and individuals have had in shaping today's society.

Mission

To promote cohesion between and within communities, at a neighbourhood level and globally, by highlighting the historic contributions made by a variety of communities

To work with young people and the community at large to address wellbeing, health inequalities, food poverty and social cohesion

To use the 'arts', culture, 'sport' and other tools to engage with people.

Aim

To explore, record, preserve and share the individual and collective heritage of groups and individuals. To develop initiatives to improve people's wellbeing.

Objectives

The prevention and relief of poverty for the public benefit in Birmingham by providing donations of food for local food banks.

The advancement of education for the public benefit in Birmingham by providing workshops relating to healthy eating and nutrition, cooking on a budget and health and safety procedures in the handling and preparation of food.

For the public benefit to promote the relief of elderly people resident in Birmingham by providing a befriending service and group opportunities for social contact and interaction designed to relieve social isolation and loneliness.

Significant activities

To advance the education for the public benefit in all aspects of the culture, arts, wellbeing, heritage and social history, including those that are disadvantaged from different racial groups in the West Midlands and globally. In so doing promoting the cohesion between and within such groups.

Delivering healthy cooked food around the city using a vehicle as a portable kitchen. The vehicle is also used to collect and distribute food for the food bank element of the organisation. The vehicle is to be owned by the charity, LGK. All the funding and donations received will be applied for the charitable purposes only. Food may be prepared in the kitchen facility provided free of charge by the charity's supporters at their residences or other venues where an event is organised.

Teaching how to cook healthy meals for the community to promote good health as well as the organisation of food banks which will assist some of the needy communities in the city as well as the country.

Grantmaking

The Trustees consider applications received for grant and approve on the merits and objectives for which such grants may be used for.

LGK IN THE COMMUNITY
REPORT OF THE TRUSTEES
FOR THE YEAR ENDED 31 OCTOBER 2024

OBJECTIVES AND ACTIVITIES

Volunteers

The value of services provided by volunteers is not incorporated in these financial statements. However, payments are made to cover the volunteers' actual expenses which are included in the financial statements.

ACHIEVEMENT AND PERFORMANCE

Charitable activities

Providing food banks and education in respect of healthy diets. Organising food based events in order to raise funds for the charity which is used to help those in need of nutritional education and adequate food provision.

Delivering healthy cooked food around the city using a vehicle as a portable kitchen. The vehicle is also used to collect and distribute food for the food bank element of the organisation.

Teaching how to cook healthy meals for the community to promote good health as well as the organisation of food banks which will assist some of the needy communities in the city as well as the country.

Fundraising activities

Organising Pop-up Taverna and serving healthy meals to generate donations.

Publishing and selling book relating to the evolution of Greek Cypriot cuisine into British society.

FINANCIAL REVIEW

Principal funding sources

The future of Charity's services is dependent on continued support from statutory sources and income from grants and donations, which are essential for the maintenance and expansion of services to meet the increasing demand.

The Charity provides essential services and develops unique training projects that help to profile/meet the needs of the public and is supported in part by Local Authority, Big Lottery Fund and Heritage Lottery Fund. Although such funding continues, demand for projects, services, and an increase in core costs considerably outweighs the funding provided by these sources, to the extent that the Charity has to continually look for funding from other organisations, charitable and corporate bodies and individual donors.

Reserves policy

The Board of Trustees is responsible for deciding how to invest the Charity's reserves. The appropriate level of reserves is established through an annual review of the Charity's requirements and stated in the financial report. The Treasurer is responsible for proposing to the Board the balance of cash on deposit and investments, and acts on the Board's instructions.

Taking into account the impact on future grants and donations receivable, the trustees may have to limit the charity's activities within the reserves available.

Review of transactions, financial performance and funds

As shown in the Statement of Financial Activities (page 6) total income for the period to 31 October 2024 amounted to £161,846. Expenditure in the furtherance of charitable activities totalled £103,396. The Charity resulted in a Net resources surplus of £58,450.

FUTURE PLANS

In light of the current economical climate the organisation will review its business plan / operational model to help it ensure sustainability and will make any changes needed. It remains committed to supporting the primary beneficiaries of our activities and services and will aim to continue delivery of a programme of key activities and associated services.

The organisation plans to continue working strategically to help achieve our objectives.

LGK IN THE COMMUNITY
REPORT OF THE TRUSTEES
FOR THE YEAR ENDED 31 OCTOBER 2024

STRUCTURE, GOVERNANCE AND MANAGEMENT

Governing document

The charity is controlled by its governing document, a deed of trust, and constitutes a limited company, limited by guarantee, as defined by the Companies Act 2006.

Recruitment and appointment of new trustees

Every person who wishes to be a Member and a trustee as such, shall deliver to the Company an application for membership in such form as the Directors require executed by that person.

At the next meeting of the Directors after the receipt of any application for membership, the application shall be considered by the Directors who shall decide upon the admission or rejection of the applicant.

Organisational structure

The Charity has a Management Committee of up to six members who meet regularly and are responsible for strategic direction and policy of the charity. At present the committee has six members from a variety of backgrounds relevant to the work of the charity. The committee is made up of the trustees.

A scheme of delegation is in place and day to day responsibility for the provision of services rest with the trustees.. The trustees are responsible for ensuring that the charity delivers the services specified and that key performance indicators are met.

Induction and training of new trustees

New trustees receive a comprehensive induction package, with information covering the duties of a trustee, a trustee job description and service agreement, an outline of the vision, mission and implementation of the charity's services, the latest Report and Accounts, current year's budget and latest management accounts.

Trustees are encouraged to make use of the training and conference opportunities provided by the NVCO and other bodies.

Risk management

The trustees have a duty to identify and review the risks to which the charity is exposed and to ensure appropriate controls are in place to provide reasonable assurance against fraud and error.

REFERENCE AND ADMINISTRATIVE DETAILS

Registered Company number

10418907 (England and Wales)

Registered Charity number

1182273

Registered office

Nash Dom Community Hub
Sun Street
Walsall
WS1 4AL

Trustees

Mrs L Malla Trustee
Mrs O Hazell Trustee
Mr Y K Gupta Trustee

LGK IN THE COMMUNITY
REPORT OF THE TRUSTEES
FOR THE YEAR ENDED 31 OCTOBER 2024

REFERENCE AND ADMINISTRATIVE DETAILS

Independent Examiner

Michael Filiou Ltd
Chartered Certified Accountants
www.michaelfiliou.com
Salisbury House
81 High Street
Potters Bar
Hertfordshire
EN6 5AS

This report has been prepared in accordance with the special provisions of Part 15 of the Companies Act 2006 relating to small companies.

Approved by order of the board of trustees on 22 July 2025 and signed on its behalf by:

Mrs O Hazell - Trustee

INDEPENDENT EXAMINER'S REPORT TO THE TRUSTEES OF LGK IN THE COMMUNITY

Independent examiner's report to the trustees of LGK In The Community ('the Company')

I report to the charity trustees on my examination of the accounts of the Company for the year ended 31 October 2024.

Responsibilities and basis of report

As the charity's trustees of the Company (and also its directors for the purposes of company law) you are responsible for the preparation of the accounts in accordance with the requirements of the Companies Act 2006 ('the 2006 Act').

Having satisfied myself that the accounts of the Company are not required to be audited under Part 16 of the 2006 Act and are eligible for independent examination, I report in respect of my examination of your charity's accounts as carried out under Section 145 of the Charities Act 2011 ('the 2011 Act'). In carrying out my examination I have followed the Directions given by the Charity Commission under Section 145(5) (b) of the 2011 Act.

Independent examiner's statement

I have completed my examination. I confirm that no matters have come to my attention in connection with the examination giving me cause to believe:

1. accounting records were not kept in respect of the Company as required by Section 386 of the 2006 Act; or
2. the accounts do not accord with those records; or
3. the accounts do not comply with the accounting requirements of Section 396 of the 2006 Act other than any requirement that the accounts give a true and fair view which is not a matter considered as part of an independent examination; or
4. the accounts have not been prepared in accordance with the methods and principles of the Statement of Recommended Practice for accounting and reporting by charities (applicable to charities preparing their accounts in accordance with the Financial Reporting Standard applicable in the UK and Republic of Ireland (FRS 102)).

I have no concerns and have come across no other matters in connection with the examination to which attention should be drawn in this report in order to enable a proper understanding of the accounts to be reached.

Mr Michael Filiou FCCA

Michael Filiou Ltd
Chartered Certified Accountants
www.michaelfiliou.com
Salisbury House
81 High Street
Potters Bar
Hertfordshire
EN6 5AS

22 July 2025

LGK IN THE COMMUNITY

STATEMENT OF FINANCIAL ACTIVITIES FOR THE YEAR ENDED 31 OCTOBER 2024

		Unrestricted fund £	Restricted funds £	2024 Total funds £	2023 Total funds £
	Notes				
INCOME AND ENDOWMENTS FROM					
Donations and legacies	2	<u>24,231</u>	<u>137,615</u>	<u>161,846</u>	<u>86,466</u>
EXPENDITURE ON					
Charitable activities	3				
Food Bank		-	13,190	13,190	10,743
Donations		10,895	4,314	15,209	31,772
Publication Cost		7,575	-	7,575	9,200
Travelling Expense		5,324	575	5,899	5,809
Project Management		25,153	30,488	55,641	38,278
Other		<u>1,371</u>	<u>4,511</u>	<u>5,882</u>	<u>7,565</u>
Total		<u>50,318</u>	<u>53,078</u>	<u>103,396</u>	<u>103,367</u>
NET INCOME/(EXPENDITURE)		(26,087)	84,537	58,450	(16,901)
RECONCILIATION OF FUNDS					
Total funds brought forward		<u>27,066</u>	<u>75,048</u>	<u>102,114</u>	<u>119,015</u>
TOTAL FUNDS CARRIED FORWARD		<u><u>979</u></u>	<u><u>159,585</u></u>	<u><u>160,564</u></u>	<u><u>102,114</u></u>

The notes form part of these financial statements

LGK IN THE COMMUNITY
STATEMENT OF FINANCIAL POSITION
31 OCTOBER 2024

	Notes	Unrestricted fund £	Restricted funds £	2024 Total funds £	2023 Total funds £
FIXED ASSETS					
Tangible assets	9	-	12,032	12,032	16,043
CURRENT ASSETS					
Cash at bank		1,579	178,755	180,334	96,023
CREDITORS					
Amounts falling due within one year	10	(600)	(31,202)	(31,802)	(9,952)
NET CURRENT ASSETS		979	147,553	148,532	86,071
TOTAL ASSETS LESS CURRENT LIABILITIES		979	159,585	160,564	102,114
NET ASSETS		979	159,585	160,564	102,114
FUNDS	12				
Unrestricted funds				979	27,066
Restricted funds				159,585	75,048
TOTAL FUNDS				160,564	102,114

The charitable company is entitled to exemption from audit under Section 477 of the Companies Act 2006 for the year ended 31 October 2024.

The members have not required the company to obtain an audit of its financial statements for the year ended 31 October 2024 in accordance with Section 476 of the Companies Act 2006.

The trustees acknowledge their responsibilities for

- (a) ensuring that the charitable company keeps accounting records that comply with Sections 386 and 387 of the Companies Act 2006 and
- (b) preparing financial statements which give a true and fair view of the state of affairs of the charitable company as at the end of each financial year and of its surplus or deficit for each financial year in accordance with the requirements of Sections 394 and 395 and which otherwise comply with the requirements of the Companies Act 2006 relating to financial statements, so far as applicable to the charitable company.

The notes form part of these financial statements

LGK IN THE COMMUNITY

STATEMENT OF FINANCIAL POSITION - continued
31 OCTOBER 2024

These financial statements have been prepared in accordance with the provisions applicable to charitable companies subject to the small companies regime.

The financial statements were approved by the Board of Trustees and authorised for issue on 22 July 2025 and were signed on its behalf by:

Mrs O Hazell - Trustee

The notes form part of these financial statements

LGK IN THE COMMUNITY

NOTES TO THE FINANCIAL STATEMENTS FOR THE YEAR ENDED 31 OCTOBER 2024

1. ACCOUNTING POLICIES

Basis of preparing the financial statements

The financial statements of the charitable company, which is a public benefit entity under FRS 102, have been prepared in accordance with the Charities SORP (FRS 102) 'Accounting and Reporting by Charities: Statement of Recommended Practice applicable to charities preparing their accounts in accordance with the Financial Reporting Standard applicable in the UK and Republic of Ireland (FRS 102) (effective 1 January 2019)', Financial Reporting Standard 102 'The Financial Reporting Standard applicable in the UK and Republic of Ireland' and the Companies Act 2006. The financial statements have been prepared under the historical cost convention.

Income

All income is recognised in the Statement of Financial Activities once the charity has entitlement to the funds, it is probable that the income will be received and the amount can be measured reliably.

Expenditure

Liabilities are recognised as expenditure as soon as there is a legal or constructive obligation committing the charity to that expenditure, it is probable that a transfer of economic benefits will be required in settlement and the amount of the obligation can be measured reliably. Expenditure is accounted for on an accruals basis and has been classified under headings that aggregate all cost related to the category. Where costs cannot be directly attributed to particular headings they have been allocated to activities on a basis consistent with the use of resources.

Grants offered subject to conditions which have not been met at the year end date are noted as a commitment but not accrued as expenditure.

Tangible fixed assets

Depreciation is provided at the following annual rates in order to write off each asset over its estimated useful life.

Motor vehicles	- 25% on reducing balance
Computer equipment	- 25% on reducing balance

Taxation

The charity is exempt from corporation tax on its charitable activities.

Fund accounting

Unrestricted funds can be used in accordance with the charitable objectives at the discretion of the trustees.

Restricted funds can only be used for particular restricted purposes within the objects of the charity. Restrictions arise when specified by the donor or when funds are raised for particular restricted purposes.

Further explanation of the nature and purpose of each fund is included in the notes to the financial statements.

LGK IN THE COMMUNITY

NOTES TO THE FINANCIAL STATEMENTS - continued FOR THE YEAR ENDED 31 OCTOBER 2024

2. DONATIONS AND LEGACIES

	2024	2023
	£	£
Donations	64,267	44,791
Grants	97,579	41,675
	<u>161,846</u>	<u>86,466</u>

Grants received, included in the above, are as follows:

	2024	2023
	£	£
Heritage Lottery	97,579	-
Queen of Commonwealth	-	100
Holiday Activity Fund	-	6,141
Queens of Amathus	-	684
National Lottery SSM	-	34,750
	<u>97,579</u>	<u>41,675</u>

3. CHARITABLE ACTIVITIES COSTS

	Direct Costs £	Grant funding of activities (see note 4) £	Totals £
Food Bank	13,190	-	13,190
Donations	-	15,209	15,209
Publication Cost	7,575	-	7,575
Travelling Expense	5,899	-	5,899
Project Management	55,641	-	55,641
	<u>82,305</u>	<u>15,209</u>	<u>97,514</u>

LGK IN THE COMMUNITY

NOTES TO THE FINANCIAL STATEMENTS - continued FOR THE YEAR ENDED 31 OCTOBER 2024

4. GRANTS PAYABLE

	2024	2023
	£	£
Donations	<u>15,209</u>	<u>31,772</u>

5. NET INCOME/(EXPENDITURE)

Net income/(expenditure) is stated after charging/(crediting):

	2024	2023
	£	£
Depreciation - owned assets	<u>4,011</u>	<u>5,349</u>

6. TRUSTEES' REMUNERATION AND BENEFITS

There were no trustees' remuneration or other benefits for the year ended 31 October 2024 nor for the year ended 31 October 2023.

Trustees' expenses

There were no trustees' expenses paid for the year ended 31 October 2024 nor for the year ended 31 October 2023.

7. STAFF COSTS

The average number of employees for the year is 0 (2021 - 0).

8. COMPARATIVES FOR THE STATEMENT OF FINANCIAL ACTIVITIES

	Unrestricted fund £	Restricted funds £	Total funds £
INCOME AND ENDOWMENTS FROM			
Donations and legacies	<u>16,500</u>	<u>69,966</u>	<u>86,466</u>
EXPENDITURE ON			
Charitable activities			
Food Bank	433	10,310	10,743
Donations	8,500	23,272	31,772
Publication Cost	5,000	4,200	9,200
Travelling Expense	5,276	533	5,809
Project Management	15,212	23,066	38,278
Other	<u>1,366</u>	<u>6,199</u>	<u>7,565</u>
Total	<u>35,787</u>	<u>67,580</u>	<u>103,367</u>
NET INCOME/(EXPENDITURE)	(19,287)	2,386	(16,901)

LGK IN THE COMMUNITY

**NOTES TO THE FINANCIAL STATEMENTS - continued
FOR THE YEAR ENDED 31 OCTOBER 2024**

8. COMPARATIVES FOR THE STATEMENT OF FINANCIAL ACTIVITIES - continued

	Unrestricted fund £	Restricted funds £	Total funds £
RECONCILIATION OF FUNDS			
Total funds brought forward	46,355	72,660	119,015
TOTAL FUNDS CARRIED FORWARD	<u>27,068</u>	<u>75,046</u>	<u>102,114</u>

9. TANGIBLE FIXED ASSETS

	Motor vehicles £	Computer equipment £	Totals £
COST			
At 1 November 2023 and 31 October 2024	<u>34,438</u>	<u>4,661</u>	<u>39,099</u>
DEPRECIATION			
At 1 November 2023	<u>19,910</u>	<u>3,146</u>	<u>23,056</u>
Charge for year	<u>3,632</u>	<u>379</u>	<u>4,011</u>
At 31 October 2024	<u>23,542</u>	<u>3,525</u>	<u>27,067</u>
NET BOOK VALUE			
At 31 October 2024	<u>10,896</u>	<u>1,136</u>	<u>12,032</u>
At 31 October 2023	<u>14,528</u>	<u>1,515</u>	<u>16,043</u>

10. CREDITORS: AMOUNTS FALLING DUE WITHIN ONE YEAR

	2024 £	2023 £
Bank loans and overdrafts (see note 11)	<u>31,202</u>	<u>9,352</u>
Accruals and deferred income	<u>600</u>	<u>600</u>
	<u>31,802</u>	<u>9,952</u>

LGK IN THE COMMUNITY

NOTES TO THE FINANCIAL STATEMENTS - continued FOR THE YEAR ENDED 31 OCTOBER 2024

11. LOANS

An analysis of the maturity of loans is given below:

	2024 £	2023 £
Amounts falling due within one year on demand:		
Bank overdrafts	31,202	9,352

12. MOVEMENT IN FUNDS

	At 1.11.23 £	Net movement in funds £	At 31.10.24 £
Unrestricted funds			
General fund	27,066	(26,087)	979
Restricted funds			
Festive Food Bank	10,168	(214)	9,954
Amathus to Birmingham	926	(52)	874
Taverna Pop Up	24,202	10,398	34,600
Queens of Amathus	21,588	-	21,588
Queen of Commonwealth	367	(327)	40
Holiday Activity Fund	21,242	-	21,242
Celebrating Community Fund	4,967	-	4,967
National Lottery SSM	(8,412)	(21,850)	(30,262)
Queen of City	-	96,582	96,582
	75,048	84,537	159,585
TOTAL FUNDS	102,114	58,450	160,564

LGK IN THE COMMUNITY

**NOTES TO THE FINANCIAL STATEMENTS - continued
FOR THE YEAR ENDED 31 OCTOBER 2024**

12. MOVEMENT IN FUNDS - continued

Net movement in funds, included in the above are as follows:

	Incoming resources £	Resources expended £	Movement in funds £
Unrestricted funds			
General fund	24,231	(50,318)	(26,087)
Restricted funds			
Festive Food Bank	3,900	(4,114)	(214)
Amathus to Birmingham	-	(52)	(52)
Taverna Pop Up	36,136	(25,738)	10,398
Queen of Commonwealth	-	(327)	(327)
National Lottery SSM	-	(21,850)	(21,850)
Queen of City	97,579	(997)	96,582
	<u>137,615</u>	<u>(53,078)</u>	<u>84,537</u>
TOTAL FUNDS	<u>161,846</u>	<u>(103,396)</u>	<u>58,450</u>

Comparatives for movement in funds

	At 1.11.22 £	Net movement in funds £	At 31.10.23 £
Unrestricted funds			
General fund	46,355	(19,289)	27,066
Restricted funds			
Festive Food Bank	6,690	3,478	10,168
Amathus to Birmingham	995	(69)	926
Taverna Pop Up	19,372	4,830	24,202
Queens of Amathus	20,105	1,483	21,588
Queen of Commonwealth	1,743	(1,376)	367
Holiday Activity Fund	18,788	2,454	21,242
Celebrating Community Fund	4,967	-	4,967
National Lottery SSM	-	(8,412)	(8,412)
	<u>72,660</u>	<u>2,388</u>	<u>75,048</u>
TOTAL FUNDS	<u>119,015</u>	<u>(16,901)</u>	<u>102,114</u>

LGK IN THE COMMUNITY

**NOTES TO THE FINANCIAL STATEMENTS - continued
FOR THE YEAR ENDED 31 OCTOBER 2024**

12. MOVEMENT IN FUNDS - continued

Comparative net movement in funds, included in the above are as follows:

	Incoming resources £	Resources expended £	Movement in funds £
Unrestricted funds			
General fund	16,500	(35,789)	(19,289)
Restricted funds			
Festive Food Bank	4,799	(1,321)	3,478
Amathus to Birmingham	1	(70)	(69)
Taverna Pop Up	23,492	(18,662)	4,830
Queens of Amathus	684	799	1,483
Queen of Commonwealth	100	(1,476)	(1,376)
Holiday Activity Fund	6,141	(3,687)	2,454
National Lottery SSM	34,749	(43,161)	(8,412)
	<u>69,966</u>	<u>(67,578)</u>	<u>2,388</u>
TOTAL FUNDS	<u>86,466</u>	<u>(103,367)</u>	<u>(16,901)</u>

A current year 12 months and prior year 12 months combined position is as follows:

	At 1.11.22 £	Net movement in funds £	At 31.10.24 £
Unrestricted funds			
General fund	46,355	(45,376)	979
Restricted funds			
Festive Food Bank	6,690	3,264	9,954
Amathus to Birmingham	995	(121)	874
Taverna Pop Up	19,372	15,228	34,600
Queens of Amathus	20,105	1,483	21,588
Queen of Commonwealth	1,743	(1,703)	40
Holiday Activity Fund	18,788	2,454	21,242
Celebrating Community Fund	4,967	-	4,967
National Lottery SSM	-	(30,262)	(30,262)
Queen of City	-	96,582	96,582
	<u>72,660</u>	<u>86,925</u>	<u>159,585</u>
TOTAL FUNDS	<u>119,015</u>	<u>41,549</u>	<u>160,564</u>

LGK IN THE COMMUNITY

NOTES TO THE FINANCIAL STATEMENTS - continued FOR THE YEAR ENDED 31 OCTOBER 2024

12. MOVEMENT IN FUNDS - continued

A current year 12 months and prior year 12 months combined net movement in funds, included in the above are as follows:

	Incoming resources £	Resources expended £	Movement in funds £
Unrestricted funds			
General fund	40,731	(86,107)	(45,376)
Restricted funds			
Festive Food Bank	8,699	(5,435)	3,264
Amathus to Birmingham	1	(122)	(121)
Taverna Pop Up	59,628	(44,400)	15,228
Queens of Amathus	684	799	1,483
Queen of Commonwealth	100	(1,803)	(1,703)
Holiday Activity Fund	6,141	(3,687)	2,454
National Lottery SSM	34,749	(65,011)	(30,262)
Queen of City	97,579	(997)	96,582
	<u>207,581</u>	<u>(120,656)</u>	<u>86,925</u>
TOTAL FUNDS	<u>248,312</u>	<u>(206,763)</u>	<u>41,549</u>

13. RELATED PARTY DISCLOSURES

There were no related party transactions for the year ended 31 October 2024.

LGK IN THE COMMUNITY

DETAILED STATEMENT OF FINANCIAL ACTIVITIES FOR THE YEAR ENDED 31 OCTOBER 2024

	2024 £	2023 £
INCOME AND ENDOWMENTS		
Donations and legacies		
Donations	64,267	44,791
Grants	97,579	41,675
	<u>161,846</u>	<u>86,466</u>
Total incoming resources	161,846	86,466
EXPENDITURE		
Charitable activities		
Rates and water	168	105
Project management costs	47,709	36,804
Volunteer expenses	4,676	1,300
Motor and travelling expenses	5,899	5,809
Publication costs	7,575	9,200
Food and material costs	13,190	10,743
Telephone expense	28	43
Legal and Professional	3,060	26
Grants to institutions	3,814	28,272
Grants to individuals	11,395	3,500
	<u>97,514</u>	<u>95,802</u>
Other		
Motor vehicles	3,632	4,843
Computer equipment	379	506
	<u>4,011</u>	<u>5,349</u>
Support costs		
Management		
Website and IT expenses	1,871	2,216
	<u>103,396</u>	<u>103,367</u>
Total resources expended	103,396	103,367
Net income/(expenditure)	<u>58,450</u>	<u>(16,901)</u>

This page does not form part of the statutory financial statements