

# Snowdonia Slate Trail Trust

Registered Charity Number 1182188



Annual Report For year ending 5 April 2025  
Presented at the AGM held on 1<sup>st</sup> November 2025

## CONTENTS

Company Information .....	3
Aims of the Charity.....	3
Details of Trustees as at 5 April 2025 .....	4
Details of Senior Wardens and Representatives as at 5 April 2025 .....	4
Structure, Governance and Management.....	4
Induction and Training .....	5
Risk Management .....	6
Marketing Report .....	6
Financial Review .....	6
Treasurer’s Report.....	7
Social Media.....	7
Project Initiatives .....	11
Facilitation .....	11
Senior Warden Report .....	11
Warden Engagement .....	12
Warden Reports .....	13
Bangor to Bethesda Café Coed y Brenin .....	13
Bethesda Caffi Coed Y Brenin to Waunfawr Snowdonia Parc .....	14
Waunfawr Snowdonia Parc to Nantlle Glan Rhonwy .....	14
Rhyd Ddu to Beddgelert Section .....	15
Croesor to TanyGrisiau .....	16
Tanygrisiau Café to Eagles Penmachno .....	17
Tanygrisiau Café to Eagles Penmachno .....	18
TanYGrisiau Cafe To Eagles Penmachno .....	19
Between Betws-y-Coed & Capel Curig. ....	20
Projects Report .....	25
Acknowledgements.....	28
Appendices .....	29
Letter from Janet Finch-Saunders AM.....	29
Letter from Sian Gwellian AS .....	29
Charity Commission Accounts .....	29
Letter from Liz Saville Roberts MP .....	29

## **COMPANY INFORMATION**

Registered: 15 February 2019

Chair: Joan Cutting

Charity Number: 1182188

Registered Office: 44a Stryd Fawr  
Llanberis  
LL55 4EU

Independent Examiner: Alun Griffith

Bankers: Bank of Scotland

## **AIMS OF THE CHARITY**

1. The advancement of education for the public benefit in the unique slate heritage and culture of Snowdonia.
2. The provision of facilities for recreation or other leisure time occupation for the public at large in the interests of social welfare by monitoring, managing and enhancing the Snowdonia Slate Trail long distance footpath.

**DETAILS OF TRUSTEES AS AT 5 APRIL 2025**

Joan Cutting - Chair

Evelyn Storrie - Secretary

Aled Owen -Treasurer

Roger Greenhalgh

Dorothy Howarth - Social Media

Mieko Yamaguchi - Route Details Updates

Lisa Wells – Lead Trustee, Wardens

Paul Bridges

**DETAILS OF SENIOR WARDENS AND REPRESENTATIVES AS AT 5 APRIL 2025**

Graham Fitch representing The Ramblers

Snowdonia Society – no current Representative

David Jones – Senior Warden covering Bangor to Beddgelert & Ogwen to Bethesda

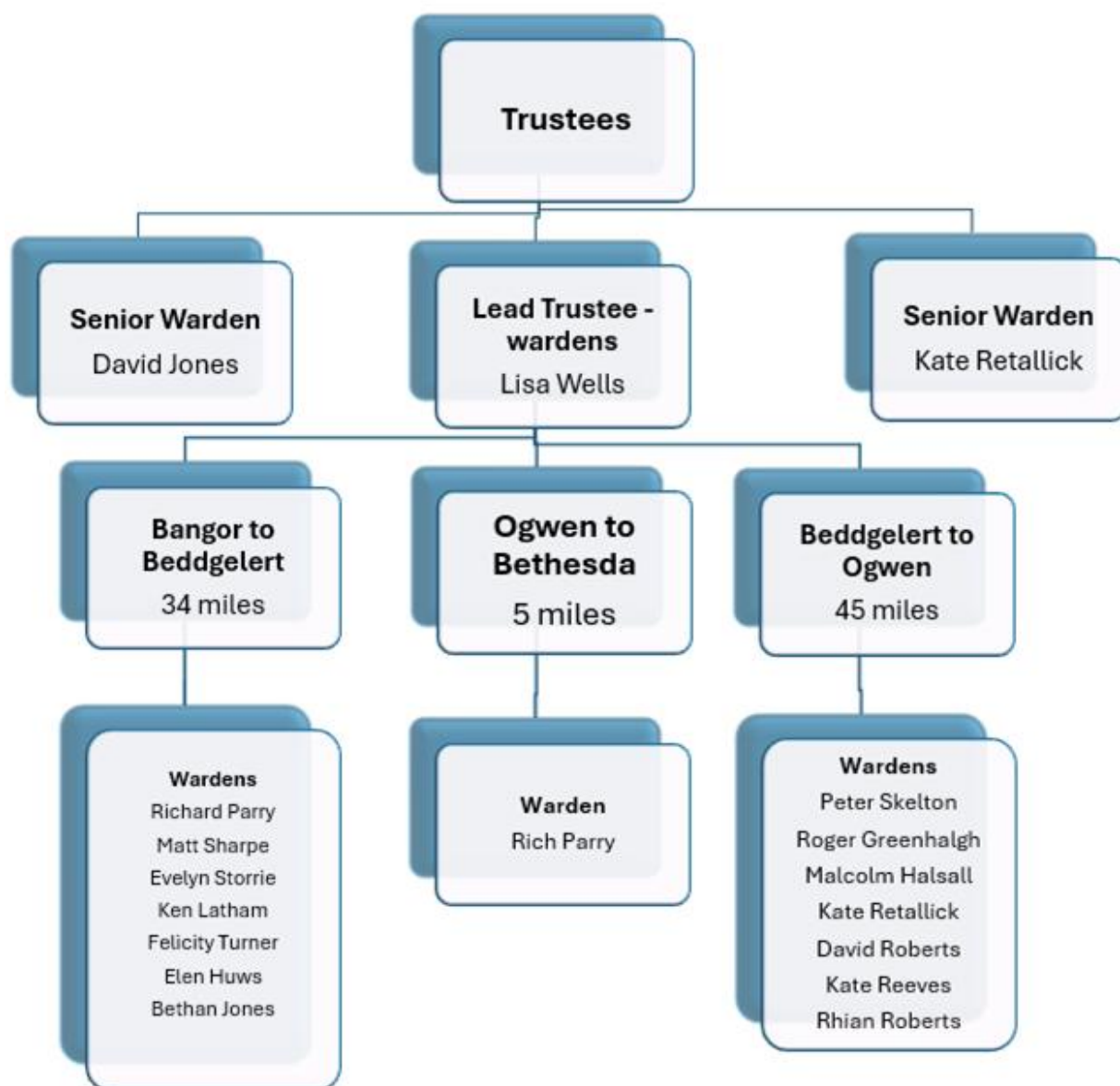
Kate Retallick - Senior Warden covering Beddgelert to Ogwen

**STRUCTURE, GOVERNANCE AND MANAGEMENT**

The governing document of the Snowdonia Slate Trail Trust is the Constitution of the Snowdonia Slate Trail Trust, a Charitable Incorporated Organisation, (Foundation Structure) as amended on 7 February 2019. Copies of this document can be inspected on request.

The Snowdonia Slate Trail Trust is managed by the Board of Trustees. At present, there are 8 Trustees.

Other people who wish to assist with the Trust do so as Wardens or volunteers.



Version 1 2025-10-19

The Board of Trustees generally meets once a year, and occasionally at other times as necessary, and meetings are open to wardens and interested parties to attend. Otherwise, communication is via email or the WhatsApp group.

#### INDUCTION AND TRAINING

New Trustees are given the Charities Commission “How to be a Trustee” document. Trustees are encouraged to keep up to date with charity law by private learning. This year, there have been no training events.

## **RISK MANAGEMENT**

The Trustees carry out a continuous and ongoing review of policies designed to identify, manage and avert risk, both financial and operational. The Treasurer aims to report regularly on the state of the finances and reviews past performance and future needs. The Trustees act accordingly.

## **MARKETING REPORT**

No marketing report has been produced. It will be discussed at the AGM whether the Trust requires a Trustee responsible for this.

## **FINANCIAL REVIEW**

The Trust maintains a healthy bank balance and continues to monitor expenditure such that it remains sustainable. The 2024-25 account was audited, and no issues were highlighted. A full Treasurer's report is included below.

### **Policy on Reserves**

The Snowdonia Slate Trail Trust needs reserves for the following reasons: -

- To provide sufficient working capital for its day-to-day needs
- To enable it to continue to operate in the event of a crisis.
- To enable it to cope with any reduction in its income.
- To finance and underpin growth in its activities.

## **TREASURER'S REPORT**

The financial report to be submitted to the Charities Commission appended to this document covers the financial year 2024-25. The full account spreadsheet can be made available to anyone who requests it.

In that year, we raised a £960 grant for the project to carry out a survey of the route to identify what might be needed to bring it up to National Trail standard. A £9400 grant was achieved to carry out research on how the Trail is used and what might increase public awareness of it. £3200 was raised for our schools project and a further £2750 for the information boards. Finally, we received £16200 as part of our input into the £1M research project on sustainable tourism around the Trail.

Book sales raised £390. Minor donations and sales of medal and badges raised £1280, over twice the previous year. This includes donations from Aled of £700 which he was paid for translating the National Trail survey, and £300 he received for managing our part of the £1M research project. That project will bring in about £100 per month for the next four years. Gift Aid brought in about £800.

Main expenditure was on insurance (£164), website maintenance (£325), maintenance (£1381), postage (£364), passport stamps (£333), benches (£1902), Schools project (£1663), user research (£9483), the £1m research project (£8504) and the survey (£9700). This brought our available funds to £19616, of which £13545 was restricted, while the rest was allocated to the further improvements and the survey.

Since the end of the last financial year and as at 20 September 2025, about £13100 has been received, of which £10800 is for the major research project and £1000 for the boards project. The recent major expenditure has been £14342 on the major research project and £3971 on the boards project.

Sale of goods is slow. We have ample supplies of T-shirts, and metal and sew-on badges, as well as medals and car stickers, and would not recommend expanding our range of items for sale at present.

Aled Owen  
Treasurer

## **SOCIAL MEDIA**

From Dorothy Howarth

Snowdonia Slate Trail has over 4500 followers on Facebook and 315 on Instagram

## THE PASSPORT SCHEME

Joan Cutting

18 September 2025

We're into the 7th year of the Passport Scheme. Medals cost £3.50 and most people add a donation for path maintenance. Here's how the income from medals and donations is looking to date:

Date	Medals	Income £
Aug 2018 to Nov 2019	13	105.50
Nov 2019 to Sep 2020	7	72.00
May 2021 to Oct 2021	19	340.50
Oct 2021 to Oct 2022	24	184.00
Oct 2022 to Oct 2023	40	308.10
Nov 2023 to Sep 2024	12	117.00
Oct 2024 to Oct 2025	19	164.50
<b>TOTAL</b>	<b>133</b>	<b>1,292.00</b>

We now have 26 venues participating in the Passport Scheme (25 last year).

- Caffi'r Pafiliwn, Blaenau Ffestiniog - closed
- Caffi Blas a Waun, Antur Waunfawr – re-opened
- Caffi Siabod – re-opened

As for the total number of visits stamped per venue, recorded in the last three years when passports are sent to us with medal requests, the following 14 venues have had more than 20 (11 venues last year)

- Caffi Coed y Brenin (23)
- Amgueddfa National Slate Museum - Llanberis (30)
- Canolfan Y Fron (40)
- Beddgelert Tourist Information Centre (39)
- Lakeside Café, Tanygrisiau (40)
- Y Pengwern, Llan Ffestiniog (37)
- Pen y Bryn Stores, Llan Ffestiniog (33)
- Ty Uchaf - The Eagles (22)
- Londis Penmachno (22)
- Conwy Falls (33)
- Betws Tourist Information Centre (35)
- Ty Hyll (25)
- Joe Brown Shop, Capel Curig (26)
- Canolfan Ogwen - Kiosk (23)



The Passport Scheme seems to be healthy, judging by this slight increase in medals, income, venues and stamps. However, our records show that ten venues have had between zero and two visits stamped since January.

The ten venues with the low number of stamps offer various reasons

- Lodge Dinorwig: "We definitely have some guests who are not fussed about the passports (mainly when the weather forecast is damp and they are camping for the next leg of the trail) and some didn't even know about the stamps at all."
- Pitch and Hike Camping: "most are not interested in the passport despite us hugely and very enthusiastically promoting it! /.../ Maybe it's our location along the route, not at the start, not at the end etc. We also think people might stop more at us when the weather is bad and they just want a break. At that point they seem quite knackered!!! We take them a thermos of hot water but by then they don't have any interest in any admin!!!"
- Caffi Croesor: "A frequent topic that arose from stamp collectors was that many of the venues advertised to collect stamps from were no longer trading or they were closed, so although folk made it to the destination they were unable to collect their stamps."
- Crib Goch Outdoor: "Could it be that people haven't then gone on to complete a passport and send it in?"
- National Slate Museum: "we have found the visitor figures for the Quarry Hospital to be considerably less than the Museum"

The number getting stamps is greater than the number applying for a medal

- When I asked Pitch and Hike Camping why they'd stamped none: "We have stamped quite a few passports, mainly new ones we give out."
- When I asked National Slate Museum why they'd stamped none: "the staff in the Quarry Hospital have engaged with approx. 7 people with either stamping their passports or giving passports out."
- When I asked Crib Goch Outdoor World why they thought they'd stamped only five: "We've definitely stamped more than 5"
- When I asked Lodge Dinorwig why they thought they'd stamped only five: "We have had less stamping business since closing the Cafe but I can assure you, it's been a lot more than 5. I'd say I stamped about 15 passports alone this year."
- When I asked Joe Brown Shops Capel Curig why they thought they'd stamped only two: "We have definitely had more than two people stamp their passport this year - I'd estimate 30+"

The number walking the SST is greater than the number getting stamps

- Pitch and Hike Camping: "We have had lots of Slate Trail users come through. /.../ We also follow the slate trail Facebook page. It seems the path is gaining popularity. /.../ We are very proud of the slate trail."
- Betws Tourist information Centre (35 stamps): "A fair number of Slate Trail Walkers have come through the TIC, we must receive at least 5 each week."
- Beddgelert Tourist information Centre (39 stamps): "The slate trail is certainly popular, more so this year. We have met a lot of people doing and enjoying the trail so it seems to have been a very successful year."
- Caffi Croesor (11 stamps): "We did meet quite a few passing along the trail."
- Poblado Coffi (10 stamps): "We've seen a decent amount of slate trail traffic come through after the summer busyness."

The Passport Scheme is having a positive effect

- Pitch and Hike Camping: "The scheme is definitely helping us."
- Poblado Coffi: "It's great to be a stop off for walkers and the advertising and stamp incentive helps."
- Beddgelert Tourist information Centre: the SST "draws more people into Beddgelert and to our information centre so it's a very welcome addition to the activities on offer in the area!"
- Betws Tourist information Centre: "We feel the scheme likely does help our venue, and knowledge of the route is helpful to direct some walkers who are up for trying something new."
- Janet Finch-Saunders MS, in a letter pledging support to make the SST a national trail,: "I've been impressed by the positive impact the route is having on local businesses. For example, the passport project is to be commended for encouraging walkers to enter and spend in local cafes, pubs, and much more."

## PROJECT INITIATIVES

Roger Greenhalgh

- **Schools Resources** proofs-of-concept materials: production of a Teachers' Guide, Activity Materials, and a small set of exploratory guides (app-based and with PDF-equivalents). These are currently awaiting minor revisions due to some on-going site-location and access changes, and for bi-lingual re-factoring.
- **Bloomberg Connect** digital collections app: compilation of online slate heritage/culture interpretations for a variety of iconic locations throughout or adjacent to the Slate Trail. This is in response to an opportunity for broadening trail discoverability through the Bloomberg Connect initiative of Bloomberg Philanthropies, who provide the platform for creating digital app representations of many Museums and Heritage/Culture Trails internationally.

## FACILITATION

Roger Greenhalgh

- Investigation and creation of online document storage, sharing and archiving capability for use by trustees and wardens (awaiting release at November AGM)
- Set-up of equipment store for Trail Maintenance tools, equipment and consumables at Beddgelert (using space provided by Lancashire Mountaineering Club)
- Trail improvements (waymarking and some bracken clearance) undertaken at Cilgwyn/Pen-y-Orsedd in conjunction with volunteers from the Caru Eryri initiative of the Snowdonia Society.

## SENIOR WARDEN REPORT

David Jones

Gradually, over a three-month period, I undertook a systematic check of the spelling, grammar & general information in the Snowdonia Slate Trail website, in both the English & Welsh options. My report can be seen on the SST Google site, as are my trail reports. <https://sites.google.com/view/snowdoniaslatetrail/home>

Cut a tree blocking the trail as you ascend from Waunfawr, as highlighted by Evelyn, plus the addition of roundels on the new ladder stiles, & some light pruning of gorse up to Ty'n y Graig ruin.

Upkeep of the LIVE (trail furniture) & Passport Maps.

Undertake trail visits for inspection, maintenance (where possible) & trail furniture data collection (Lodge Dinorwig to Waunfawr & Betws-y-Coed to Capel Curig).

## WARDEN ENGAGEMENT

Roger Greenhalgh

Whilst acting in an independent capacity, (but demonstrating advocacy for the Snowdonia Slate Trail in the wider locality), Roger has been involved with the delivery of a number of slate-heritage-themed workshops and projects, which each raise the profile of both the Snowdonia Slate Trail and the broader World Heritage Site.

For example:

- **Community Map-making** workshop : participants undertook some simple survey techniques similar to those used by the Ordnance Survey mapping teams in the Victorian era, then through co-design and consensus contributed to the production of a digital map of Cwm Croesor.
- **Lithophone making** workshop: participants constructed small xylophones using natural slate, and experimented with techniques to perfect their use.
- **Hidden Histories** discovery walks: short local guided walks with heritage discovery themes.
- Attendance at a variety of WHS community engagement events
- Participation in the steering group of the Dolennu Partnership project
- Co-authoring of the Snowdonia Slate Trail business & visitor survey (October 2024)
- Representation on the Education sub-group of the World Heritage Site
- Professional accreditation by the Association for Heritage Interpretation
- Participation in the Arfon/Dwyfor Local Access Forum

## WARDEN REPORTS

### BANGOR TO BETHESDA CAFÉ COED Y BRENIN

Rich Parry

“Pnawn da Oll,

Great day out on the LILIE/ SST today. Me and my mate Mali, inspected the Bangor to Bethesda section covering 9.6 miles in distance (left her lead near Bangor rugby club, realised near Ffarm Cochwillan so had to trundle back 😊).

The trail is in good condition, generally the signing is good, I'll go back and replace a few of the roundels near Cochwillan.

A couple of branches across the path:

Bangor rugby - has been there for a while. I've cleared the first tree and removed a couple of limbs from the larger tree across the path. The remaining branch is quite big so would require a chainsaw to clear.

Near KG01-011

Kissing gate near Ffarm Cochwillan. A large ash branch has fallen near the gate. It's possible to negotiate the branch to get through the gate.

On that point, I really like the new Kissing gates on the trail, far easier to pass through than the older & narrower old kissing gate!!! 😊

As I mentioned, I'll go back out to replace missing or fadden roundels

TR01-001 Port Penrhyn

GA01-001 Giât Mynydd / gate near Rachub.

I'll report back when completed.”



## BETHESDA CAFFI COED Y BRENIN TO WAUNFAWR SNOWDONIA PARC

Matt Sharpe

March 12th- Betws Garmon- Aberglaslyn and return . No issues to report today, path clear, signs in good order, small amount of litter removed.

July 20th- Llanberis- Betws Garmon one way. Trail quite busy today, 2 roundels replaced toward peak of Moel Eilio. Usual litter removal, but path in good order and way markers clearly visible.

September 20th- Beddgelert- Aberglaslyn. Some bracken removed, gate put back on hinges by train crossing. All parts of path clear.

## WAUNFAWR SNOWDONIA PARC TO NANTLLE GLAN RHONWY

Evelyn Storrie

I have walked the entire section once during the year and the earlier section towards Y Fron several times. On my first walk of the section, there was a tree blocking the path which David subsequently cleared. There is a signposting issue near the garden where the footpath goes left as the track veers right which has been discussed on the WhatsApp group and also a post that is due to be replaced in the next month. Most of my work on the trail has been to do with cutting back the vegetation on the first section after joining the path from the Rhosgadfan road. I have also noted that there is Himalayan balsam on this section which will need to be dealt with next spring. I have occasionally met a local on the trail and the feedback has been positive.

## RHYD DDU TO BEDDGELERT SECTION

Ken Latham

The warm spring early summer of the year saw many walkers on my section from Rhyd Ddu to Beddgelert and I have walked it about 15 times so far, (due to ongoing knee problems, still waiting for an op 3 years later! the Nantlle section on my patch has been put on the back burner slightly)

I encountered a lot of foreign walkers this year, many from Canada but yet to meet anyone from the States, a crew from France who thought the trail was 'Tres magnifique' and Italians, Dutch, Latvia and a couple who had come over from Japan just to do the trail! Our reputation is far and wide it seems.

A few of the signs and general trail furniture is looking a bit worn out and I think we will need to look at some of this in the next year, luckily the National Park have undertaken some much-needed bridge repairs.

The wooden post (not ours) at the junction of the forest track as you drop down to the railway at Caer Gors seems to have lost its fingers for some inexplicable reason, souvenir hunters? And I've had to replace some of the roundels too; there must be garage walls or people's kitchens with our roundels on display as a memento of being on the trail.

The tree destruction is still causing the use of the diversion at The Forest Campsite but doesn't seem to be causing much problem, although I have had to raise the fallen/moved barriers on virtually every trip. This is going to be a bit undertaking to clear the damage.

I've noticed and spoke to a few people who have been going from the car park at the Train Station in Rhyd Ddu and taking the Yr Wyddfa path as far as Penlon and then dropping down to pick up the trail at Caer Gors as supposed to going round Llyn y Gader, not sure why as it's off the official trail but is a nice diversion if you want to go a bit high, might be worth adding as an alternative choice in the next guidebook possibly.

Summing up it's been a busy year on my bit and it still proves very popular as a short day walk too, I spoke to lots of people who were just doing this section but taking in the Llyn Llywelyn circuit and then dropping down to Beddgelert, the dam here at the lake has now been landscaped and has some great picnic tables and is proving very popular, possibly another one for the book!

One gripe I did get from a few folks was the lack of benches or just anywhere comfy to sit and have a break, not sure how we can tackle this though.

## CROESOR TO TANYGRISIAU

Roger Greenhalgh

Regular wardening duties on the through-route of this section have been somewhat diminished by the temporary limitations of the current warden's health. (Knee replacement revision surgery was successfully achieved for him in September, and a further intervention is now scheduled for early 2026.) In the meanwhile, regular wardening visits were still made to each of the lowland lengths of this section, i.e. Cwm Croesor and Cwmorthin. This section of the trail continues to be popular with hikers, although many of its casual visitors are observed to be favouring circular subsections which utilise the trail in part, but incorporate "loops" such as via Cnicht, or via the Moelwynion and the Stwlan Dam. Planning to hike the "through route" here remains dependant on some adept or inventive public transport planning, (hence the popularity of circular routes.)

The Tanygrisiau car park at the foot of the ascent to Cwmorthin continues to have a litter problem, and is frequently busy with picnicking day visitors who take short strolls up Llyn Cwmorthin, but little further. Lakeside Café, Tanygrisiau, have made considerable improvements to their own car park and strongly encourage non-café visitors to make use of the upper public car parking facilities.

The Croesor car park suffers much less of a litter problem. Oriel Café Croesor has now re-opened with the café under new management, after a lengthy period of dormancy. The adjacent gallery has been rejuvenated through a newly re-established community group, Hwb Croesor, and has begun to host an eclectic range of exhibits and events. Some of this impetus has been enabled through funding from the LlenNI Llechi community engagement initiative which has arisen as a result of the UNESCO World Heritage Site (WHS) listing of the North Wales slate heritage landscape. The opportunity to utilise volunteers from the Caru Eryri initiative of the Snowdonia Society to tackle the waterlogging of the newly installed pedestrian gate above Rhosydd has, unfortunately, been placed on hold as a result of staffing shortages with the Snowdonia Society.



## TANYGRISIAU CAFÉ TO EAGLES PENMACHNO

Rhian Roberts

### January

Walked with Kate Reeves from Cwm Penmachno to sign leading off tarmac road in Cwm Teigl.

There were a couple of signage issues which were sorted out that day either by ourselves or by Roger after our walk.

### August

Checked the route from the scrapyard up to Bryn Mawr in Cwm Cynfal twice - once to check the route and second time to do path clearance in areas where it is permitted.

Findings were:

- Some large trees blocking the path in the woods near the waterfalls - they have been there for some time
- Path very overgrown in areas where we don't have landowner permission to clear. This included Pengwern woods which is the responsibility of NRW
- Path from scrap yard down to Blaenau very overgrown and some subsidence make it difficult to walk on in places. I think this is the same bit of path Kate Reeves reported on in the WhatsApp group back in January
- Fallen trees in small bit of woodland near Bryn Mawr have now been cleared by NRW
- No indication of where trail goes at garages at the end of Dorvil road if travelling clockwise round the route.

Photos and grid references of all issues were put on the WhatsApp Group for reference.

## TANYGRISIAU CAFÉ TO EAGLES PENMACHNO

Kate Retallick

I did not replace posts or waymarkers on the high ground above Rhiw Bach following discussion at the previous AGM about landowners potentially removing waymarkers in this area. We need to engage with landowners for this section but I have been advised it would be best to approach in Welsh. I will need assistance with this as my Welsh is very limited.

I distributed the remaining trail leaflets distributed to a local campsite and café.

I undertook infrequent bracken bashing on an ad-hoc basis on the high ground above Rhiw Bach but did not exert any significant singular effort so as not to attract attention from landowners. This section of trail remains wild and exciting; a number of people I met on the trail enjoyed the unmaintained nature of this area!

I replaced and repaired some trail signage around the Penmachno area (between Cwm Penmachno and Conwy Falls) on an opportunistic basis.

I have a large number of photographs with geotags ready for the map but I still need to liaise with David in order to get access to the editing rights to help maintain the map.

Off road motorcycle use of footpath approaching Penmachno village from the South has ceased after discussion with local riding groups.

The steps immediately down from Conwy Falls Café car park down towards Betws-y-Coed are very eroded now and need repair as they are getting challenging to negotiate. It is very steep and muddy here and the steps themselves are beginning to become obstructive. This is a permissive section of path I believe. The footpath further down is also more eroded towards the river side (not a problem yet) and tree obstructions are frequently removed.

The concept of allowing wardens to work on any section of trail and share responsibilities remains good but, in reality, I have not been able to meet up and coordinate routine trail walks since I don't plan my walks in advance and have different availability to others. I think we need to continue to allow wardens to conduct inspections, litter picking and roundel replacement alone if they are going to be out anyway but, alongside this, we need to have the option for teaming up to undertake larger tasks such as tree clearance and bracken bashing.

## TANYGRISIAU CAFE TO EAGLES PENMACHNO

Kate Reeves

This year, the girls and I have walked several sections of the trail and still enjoy it every time.

We've chopped our way through some overgrown sections and replaced roundels and added new ones where needed.

We've reported small sections that need attention such as the small hill down into Blaenau, the wall at the Ugly House and fallen trees.

## BETWEEN BETWS-Y-COED & CAPEL CURIG.

David Jones

Collecting Trail data, inspection & maintenance (where possible)

Thursday 2<sup>nd</sup> October 2025

“Having parked in Capel Curig, I utilised Sherpa’s S1 bus service to take me to Betws-y-Coed where I alighted & walked the Trail back to Capel Curig.

This mainly wooded section gave shelter from the stiff breeze on this cool day. No great problems along the Trail which would curtail one’s progress along it. Though there were instances of fallen branches, these could be negotiated by going around or under them. Also, there were some muddy bits; no surprise after so much rain recently, which were possible to skirt around.

One bit of pruning around a hidden post & replacement of four pairs of weathered roundels were undertaken during my transit.

We’re already aware of the damaged wall next to the bridge by Tŷ Hyll.

Instances mentioned above are shown below in the sequence they were encountered along the Trail.

1. SH 785 566 – *Fallen branches on the path can easily be walked around.*



2. SH 769 577 – *Pruned around hidden post at fork in path ...*



3. SH 769 577 – ... & replaced both weathered roundels.



4. SH 762 577 – Replaced a pair of weathered roundels.



5. SH 758 575 - Replaced a pair of weathered roundels.



6. SH 756 575 - Damaged wall next to the bridge on the A5 by Tŷ Hyll.



7. SH 752 578 – Removal of roundel from old stile dumped in stream. SH 752 578 – Removal of roundel from old stile dumped in stream.



8. SH 749 579 - Replaced a pair of weathered roundels.





9. SH 749 579 – Muddy patch immediately after marker post off forest track.



10. SH 747 579 – Two muddy patches & fallen branches in quick succession (you can walk under the branches).



## Other Trail Maintenance Support

From Aled & Joan

Although we're not wardens, while down in the area in August, Joan and I took the opportunity to cut back hedges and bracken at Llandegai and Dorothea. A rewarding couple of half days, and excellent exercise.

Mieko Yamaguchi regularly walks various sections of the trail and reports back on issues found via the WhatsApp group.



## PROJECTS REPORT

### *End information boards*

This is now complete with information boards installed at Porth Penrhyn and Bethesda.



### *Repairs to Permissive Path at Conwy Falls*

New steps have been installed by Conwy Council

### *Permissive Path at Yr Ocar*

The bid to categorise this as a Public Right of Way is still in the system and will take a few more years to process.

### *Permissive Path at Grisiau Cochion, Bethesda*

Sorting out the paperwork for this informal but much used path has ground to a halt due to landownership issues. The link has been used for many, many years and there is a case for it to become a Public Right of Way. Aled has tried to gather evidence of its historic use but with little response. This could do with some local investigation.

### *Access Improvements in Partnership with The Ramblers and Gwynedd Council*

We and the Ramblers contributed to new gates and stile improvements South of Waunfawr. We have also undertaken to part fund better signing on the moors between Waunfawr and Y Fron, where we have received a number of comments saying the route isn't clear here. We await details of a project to replace stiles with gates in the Tanygrisiau area.

### ***Improvements to the Trail on the Migneint***

We have received quite a lot of negative feedback regarding the state of the path in this area. Aled has recently written to NRW asking their advice on how to go about improvements.

### ***Closed Footpath at Ty Hyll***

Although not a project of ours, Aled is trying to get Conwy Council to repair and reopen the riverside path at Ty Hyll. Both Betws y Coed and Capel Curig Community Councils have failed to get action, so a letter has been sent to Conwy Council legal department to try and find out what the situation is.

### ***Investigation of Trail User and Business Feedback***

Roger and Tansy Rogerson carried out some extensive research on users of the Trail, how it is viewed by businesses around the Trail, and how to make the most of the Trail. A summary is included in the Appendix.

### ***The Dolennu Project***

After an initial pilot project, a consortium of community groups and social enterprises in the Bethesda, Nantlle and Ffestiniog areas saw the Snowdonia Slate Trail as a major opportunity for sustainable tourism. Subsequently, they secured funding of £1M over five years to carry out further research.

The Snowdonia Slate Trail Trust has been co-opted onto the group and manages, with Tansy Rogerson, a group of community researchers in the Conwy Valley area who are looking at the effects of tourism on communities, the concept of sustainable tourism, and the potential for maximising benefit around the Trail.

Our budget is £2700 per month for the first year. There has been much training of the researchers, data gathering at community events and involvement in workshops. The initial findings will be presented at a conference in early 2026.

Although the Snowdonia Slate Trail will not benefit from capital funding through this project, it certainly raises its profile.

### ***Schools Education Project***

Schools Resources proofs-of-concept materials: production of a Teachers' Guide, Activity Materials, and a small set of exploratory guides (app-based and with PDF-equivalents). These are currently awaiting minor revisions due to some on-going site-location and access changes, and for bi-lingual re-factoring.

### ***Further news***

In a recent poll by the outdoor specialist Blacks, the Snowdonia Slate Trail came equal second to West Highland Way with regard to customer satisfaction.

CADW featured the Snowdonia Slate Trail in a lengthy article in their Spring 2025 magazine.

Walk magazine featured the Trail as one of 10 to walk in their Spring edition

The Guardian is likely to feature the Snowdonia Slate Trail in a Spring 2026 edition, after being taken round the route by Walkers` Britain, who provide self-guided tours.

International tour provider UTracks now included the Snowdonia Slate Trail in their offer, as does HF Holidays.

Aled has been in contact with MPs and MSs suggesting they support our aims of becoming a National Trail. So far, Sian Gwenllian MP and Janet Finch-Saunders MS have responded positively, while Claire Hughes MP wants to talk to us. Aled continues to pursue the others!

## **APPENDIX**

### **Investigation Report - Summary/abstract**

The Snowdonia Slate Trail is a long-distance hiking route passing through some of the less frequented but beautiful parts of Snowdonia, North Wales, traversing each of the major mountain ranges, and offering a range of experiences from mountain to forest, lake to river, from the valley to the sea. It was developed and launched in 2017, through the support of a wide range of community stakeholders, crossing different counties and lands owned by many different owners, by strategically linking and waymarking a series of pre-existing established Public Rights of Way.

The route connects a significant series of communities whose culture and heritage has each been hugely influenced by and sometimes founded upon more than two centuries of slate industry, now much reduced and changed yet still with some production in evidence. For these communities the shift in the focus of local employment and the growth and diversification of tourism has brought its challenges, especially to Welsh culture and language.

In preparing and planning for the economic and cultural shift towards sustainable tourism, the various stakeholder groups recognised the strategic value of the Snowdonia Slate Trail through links between the communities of the slate heritage landscape and its potential profile in the region.

This research study set out to identify what economic benefits this and other comparable trails create. The study sought to estimate how many people use the trail (from which to derive further estimates of economic benefit). Through surveys and interviews the study elucidated how businesses may be benefitting now, and also what other facilities current and future trail users need.

An element of the research which involved working with the community slate researchers to investigate how the SST could further nurture the Welsh language and culture, returned results suggesting actions from a number of interviewed organisations and businesses. This included bilingual interpretation and community content led information boards, a mix of digital and live immersive experiences, a sample 1-day thematic itinerary, further stakeholder collaborations and developing and integrating strong Welsh language policies into the trail's management.

## **ACKNOWLEDGEMENTS**

Heritage Lottery Fund  
Magnox  
CADW  
Blakemore Foundation  
Snowdonia National Park CAE Fund  
The Foyle Foundation  
The Garfield Weston Foundation  
The Oakdale Trust  
Community Fund in Wales  
HF Holidays  
Horizon  
First  
Dŵr Cymru  
The Laspen Trust  
Bethesda Town Council  
Ffestiniog Town Council  
Gwynedd Council  
Conwy County Borough Council  
Ashley Foundation  
Rehau Plastics, Blaenau Ffestiniog  
Red Nose Day  
Cambrian Railways PAVO  
Mantell Gwynedd  
Ninevah Trust  
Gaynor Cemlyn-Jones Trust  
Menter Môn,  
Elusen Ogwen  
LleChi LleNi and  
thanks to our wardens.

## **APPENDICES**

LETTER FROM JANET FINCH-SAUNDERS AM

LETTER FROM SIAN GWELLIAN AS

CHARITY COMMISSION ACCOUNTS

LETTER FROM LIZ SAVILLE ROBERTS MP



Janet.Finch-Saunders@senedd.wales

**Constituency Office**

29 Madoc Street,  
Llandudno LL30 2TL

**Swyddfa'r Etholaeth**

29 Stryd Madog,  
Llandudno LL30 2TL

01492 871 198

Llwybr Llechi Eryri / Snowdonia  
Slate Trail, *Dros Ebst* / *By*  
*Email*

18 September 2025

Annwyl Sir/Madam,

Mae'n bleser gen i ysgrifennu i fynegi fy nghefnogaeth i uchelgais eich Ymddiriedolaeth i'r Llwybr ddod yn Llwybr Cenedlaethol / It is my pleasure to be writing to express my support of your Trust's ambition for the route to become a National Trail.

Er nad wyf wedi llwyddo i gerdded y llwybr cyfan, mwynheais y darn rhwng Llyn Ogwen a Chapel Curig yn fawr iawn. Mae'r tirwedd yn syfrdanol a'r llwybr wedi'i arwyddo'n dda. Yn fwy na hynny, rwy'n cofio meddwl pa mor wych oedd cael llwybr cymharol wastad yn Eryri, oherwydd nid yw pawb sy'n byw ac yn treulio gwyliau yma eisiau dringo mynyddoedd serth! Whilst I have not managed to walk the whole route, I thoroughly enjoyed the section between Llyn Ogwen and Chapel Curig. The landscape is breathtaking and the route well signed. More so, I recall thinking how marvellous it was to have a relatively flat route in Eryri, because not all who live and holiday here wish to climb steep mountains!

Mae pwysigrwydd y llwybr hyd yn oed yn fwy amlwg wrth ystyried bod y tirwedd y mae wedi'i hysbrydoli ganddi bellach wedi dod yn Safle Treftadaeth y Byd UNESCO. Yn ddiamau, mae hyn yn denu hyd yn oed mwy o bobl i fwynhau ein treftadaeth llechi, felly mae gwir angen i ni gefnogi cynlluniau sy'n hyrwyddo teithio yn gynaliadwy. Nid oes ffordd well o wneud hynny na chefnogi Llwybr Llechi Eryri / The importance of the route is even more apparent when considering that the very landscape it is inspired by has now become UNESCO World Heritage Site. Undoubtedly, this is attracting even more people to enjoy our slate heritage, so we really need to support schemes that champion travelling and sightseeing sustainably. There is no better way of doing that than backing the Slate Trail.

Rwyf hefyd yn falch iawn o'r effaith gadarnhaol y mae'r llwybr yn ei chael ar fusnesau lleol. Er enghraifft, mae'r prosiect pasbort i'w ganmol am annog cerddwyr i fynd i mewn i a gwario yn caffis, tafarndai, a llawer mwy o leoliadau'n lleol / I have also been impressed by the positive impact the route is having on local businesses. For example, the passport project is to be commended for encouraging walkers to enter and spend in local cafes, pubs, and much more.

[Parh/  
Cont..  
.]

[Parh/Cont].

Y cyfan sydd ar ôl i mi yw mynegi pa mor ddiolchgar ydw i i'r holl dîm y tu ôl i'r fenter wirioneddol  
wych hon. Edrychaf ymlaen at ei gweld yn mynd o nerth i nerth / All that remains is for me to  
express how grateful I am to all the team behind this genuinely fantastic initiative. I look forward to  
seeing it going from strength to strength.

Yn gwir,

A handwritten signature in dark ink, appearing to read 'Janet', written in a cursive style.

**Janet Finch-Saunders MS/AS**

## Siân Gwenllïan

Aelod o'r Senedd dros Arfon

Member of the Senedd for Arfon

## Senedd Cymru

8 Stryd y Castell, Caernarfon, Gwynedd, LL55 1SE

Sian.Gwenllian@senedd.cymru

<https://senedd.cymru/people/sian-gwenllian-as/>

## Welsh Parliament

8 Castle Street, Caernarfon, Gwynedd, LL55 1SE

Sian.Gwenllian@senedd.wales

<https://senedd.wales/people/sian-gwenllian-ms/>

01286 672076 

sian\_gwenllian\_plaid 

Siangwenfelin 

SianGwenllianASMS 

12 Awst 2025

### Parthed: Llwybr Llechi Eryri

Deallaf fod Llwybr Llechi Eryri yn awyddus i edrych ar y posibilrwydd o geisio am ddynodiad Llwybr Cenedlaethol ac i wneud y mwyaf o'r manteision posibl o'r dynodiad hwnnw. Credaf fod ystod o dystiolaeth wedi'i chasglu gan y grŵp i ddangos bod y llwybr eisoes yn llwyddiannus iawn ac yn llwybr deniadol a phoblogaidd, ac i ddangos yr achos economaidd dros gael dynodiad Llwybr Cenedlaethol.

Rwy'n credu bod llawer o waith wedi'i wneud i gynnal a gwella'r llwybr, yn ogystal ag adeiladu partneriaethau â rhanddeiliaid allweddol, a gellir adeiladu ar y gwaith hwn wrth weithio tuag at y dynodiad Llwybr Cenedlaethol.

Mewn egwyddor, felly, rwy'n cefnogi'r nod o gael y dynodiad Llwybr Cenedlaethol ond yn cydnabod bod angen gwneud llawer o waith, a chodi arian, er mwyn cyrraedd yr amcan hwnnw. Fel yr Aelod o'r Senedd dros Arfon, dymunaf yn dda iddynt gyda'r gwaith ac edrychaf ymlaen at dderbyn diweddariadau ar y cynnydd.

Yn gywir



Siân Gwenllïan

Aelod o'r Senedd dros Arfon



Senedd Cymru  
Welsh Parliament



Plaid Cymru  
Party of Wales





HOUSE OF COMMONS  
LONDON SW1A 0AA

Hydref 2, 2025

I'r sawl sydd angen gwybod

**LLYTHYR CEFNOGAETH AR GYFER CAIS AM GRANT A STATWS LLWYBR CERDDED CENEDLAETHOL - LLWYBR LLECHI ERYRI**

Yr wyf yn ysgrifennu fel Aelod Seneddol dros Ddwyrfor Meirionnydd i gynnig fy nghefnogaeth lawn i'r cais am grant i ddatblygu a chynabod Llwybr Llechi Eryri fel llwybr cerdded cenedlaethol. Mae Llwybr Llechi Eryri yn cynnig cyfle unigryw i ddathlu treftadaeth ddiwydiannol, ddiwylliannol a chymdeithasol Gwynedd, gan gysylltu cymunedau hanesyddol â thirweddau eiconig sy'n adlewyrchu hanes y diwydiant llechi.

Dynodwyd ardaloedd llechi Gwynedd yn safle Treftadaeth y Byd gan UNESCO ac mae'r llwybr yn rhan annatod o weledigaeth ehangach i hyrwyddo twristiaeth gynaliadwy sy'n gweithio i gymunedau. Byddai dynodi statws cenedlaethol i'r llwybr yn gam naturiol nesaf i sicrhau ei gynaliadwyedd, ei hygyrchedd, a'i gyfraniad parhaol i economi a hunaniaeth y cymunedau llechi.

Bydd sicrhau grant yn galluogi datblygu'r prosiect, ymgysylltu â'r cyhoedd, gan sicrhau bod y llwybr yn adnodd byw i bobl leol ac ymwelwyr fel ei gilydd.

Yn gywir

Liz Saville Roberts AS/MP  
Dwyfor Meirionnydd

Beechwood House, Heol y Bont, Dolgellau, Gwynedd, LL40 1AU  
[liz.savillroberts.mp@parliament.uk](mailto:liz.savillroberts.mp@parliament.uk)  
01341 421 116



## Receipts and payments accounts

CC16a  
Endowment funds

Details	Period start date	funds	funds
		to nearest £	to nearest £
For the period from	01-Apr-24		Period end date 31-Mar-25
From Section A		6,007	13,609

Unrestricted funds to the nearest £	Restricted funds to the nearest £	Endowment funds to the nearest £	Total funds to the nearest £	Last year to the nearest £
(agreed balances with receipts and payments account(s))	(agreed balances with receipts and payments account(s))	(agreed balances with receipts and payments account(s))	(agreed balances with receipts and payments account(s))	(agreed balances with receipts and payments account(s))
6,007	13,609	-	-	-

## Bring forward

Bring forward	5,939	10,980	Unrestricted funds	Restricted funds	Endowment funds
Activities for generating funds (trading)-medals	Details 38		to nearest £ -	38	164
B2 Other monetary assets	49		-	49	110
Donations - medals	78		-	78	191
Donations - other	1,165	-	-	1,165	158
Refunded postage				-	-
T-shirt sales	-		-	-	14
Gift Aid	807		-	807	-
Amazon Smile/Easyfundraising	115			115	246
			=	-	-
Donations - guidebook sales	389		-	389	2,702
Dolennu Research Project		16,200	Fund to which	16,200	-
Noticeboard grants	Details 2,750		asset belongs	2,750	-
Schools Project		3,200			
Worker research project		9,400			
CellB Workshop	230				329
Survey grants	2,923	29,881		960	11,140
<b>Total payments</b>					

**Sub total** (Gross income for  
**Net of receipts/(payments)**

**A2 Asset and investment sales,**  
**A6 Cash funds last year end**  
(see table).

<b>A2 Assets and investment sales,</b>					-
<b>A6 Cash funds last year end</b>	5,939	10,980		10,980	
<b>(see table)</b>					
<b>Cash funds this year end</b>	6,007	13,609		19,616	16,911
			<b>Fund to which</b>		<b>Current value</b>
<b>Details</b>			<b>asset belongs</b>		<b>(optional)</b>
<b>B4 Assets retained for the</b>					
<b>Sub total</b>	-	-	-	-	-


**B4 Assets retained for the charity's own use** *Sub total*

charity's own use				-	-
<b>Total receipts</b>	<b>8,830</b>	<b>43,490</b>	<b>-</b>	<b>52,320</b>	<b>15,054</b>

### A3 Payments

Details		Fund to which liability relates		When due (optional)	
Insurance	165	-	-	165	165
Trustee expenses	190	-	-	190	-
Stickers			-	-	95
Maintenance	703	678	-	1,381	219
Website	325			325	295
Path improvement			-	-	923
Mantell Gwynedd sub	10		-	10	10
Postage	364		-	364	116
End features			-	-	2,500
Stationery	14		-	14	-
Warden equipment					-
<b>B5 Liabilities</b>					
Passport project	333		-	333	101
Noticeboard project	489			489	-
Dolennu research project		8,440		8,440	-
Schools project		1,663		1,663	-
Survey National Trail project		9,700		9,700	2,400
Worker project	231	9,400	-	9,631	-
<b>Sub total</b>	<b>2,823</b>	<b>29,881</b>	<b>-</b>	<b>32,704</b>	<b>6,824</b>

**A4 Asset and investment purchases, (see table)**

Signed by one or two trustees on behalf of all the trustees		Signature		Print Name		Date of approval
All assets and investment purchases, (see table)						
			-	-	-	
			-	-	-	
CCXX R2 accounts	<b>Sub total</b>		-	1	-	17/09/2025



CHARITY COMMISSION  
FOR ENGLAND AND WALES

Charity Name <b>Howdonia Slate Trail Trust</b>	No (if any) <b>1182188</b>
---	-------------------------------

## Receipts and payments accounts

CC16a

For the period from	Period start date 01-Apr-24	To	Period end date 31-Mar-25
------------------------	--------------------------------	----	------------------------------

### Section A Receipts and payments

	Unrestricted funds to the nearest £	Restricted funds to the nearest £	Endowment funds to the nearest £	Total funds to the nearest £	Last year to the nearest £
<b>A1 Receipts</b>					
<b>Bring forward</b>	5,939	10,980			
Activities for generating funds (trading)-medals	38		-	38	164
Activities for generating funds (trading) -badges	49		-	49	110
Donations - medals	78			78	191
Donations - other	1,165	-	-	1,165	158
Refunded postage				-	-
T-shirt sales	-			-	14
Gift Aid	807			807	-
Amazon Smile/Easyfundraising	115			115	246
			-	-	-
Donations - guidebook sales	389		-	389	2,702
Dolennu Research Project		16,200		16,200	-
Noticeboard grants		2,750	-	2,750	-
Schools Project		3,200			
Worker research project		9,400			
CellB Workshop	250				329
Survey grants		960	-	960	11,140
<b>Sub total (Gross income for AR)</b>	8,830	43,490	-	52,320	15,054
<b>A2 Asset and investment sales, (see table).</b>					
	-	-	-	-	
	-	-	-	-	-
<b>Sub total</b>	-	-	-	-	-
<b>Total receipts</b>	8,830	43,490	-	52,320	15,054
<b>A3 Payments</b>					
Insurance	165	-	-	165	165
Trustee expenses	190	-	-	190	
Stickers			-	-	95
Maintenance	703	678	-	1,381	219
Website	325			325	295
Path improvement			-	-	923
Mantell Gwynedd sub	10			10	10
Postage	364		-	364	116
End features			-	-	2,500
Stationery	14			14	-
Warden equipment					-
Passport project	333		-	333	101
Noticeboard project	489			489	
Dolennu research project		8,504		8,504	
Schools project		1,663		1,663	
Survey National Trail project		9,700		9,700	2,400
Worker project	231	9,462	-	9,693	-
<b>Sub total</b>	2,823	30,007	-	32,830	6,824
<b>A4 Asset and investment purchases, (see table)</b>					
	-	-	-	-	
	-	-	-	-	
<b>Sub total</b>	-	1	-	-	20/09/2025 -

<b>Total payments</b>	2,823	#	30,007	-	32,830	6,824
<b>Net of receipts/(payments)</b>	68	#	2,503	-	19,490	16,918
A5 Transfers between funds	-		-	-	-	-
A6 Cash funds last year end	5,939		10,980		10,980	-
<b>Cash funds this year end</b>	6,007		13,483		19,490	16,918

Section B Statement of assets and liabilities at the end of the period

Categories	Details	Unrestricted funds to nearest £	Restricted funds to nearest £	Endowment funds to nearest £
B1 Cash funds	From Section A	6,007	13,483	-
				-
		-	-	-
	<b>Total cash funds</b>	<b>6,007</b>	<b>13,483</b>	<b>-</b>
	(agree balances with receipts and payments account(s))	OK	OK	OK
		Unrestricted funds to nearest £	Restricted funds to nearest £	Endowment funds to nearest £
B2 Other monetary assets	Details	-	-	-
		-	-	-
		-	-	-
		-	-	-
		-	-	-
		-	-	-
		-	-	-
B3 Investment assets	Details	Fund to which asset belongs	Cost (optional)	Current value (optional)
		-	-	-
		-	-	-
		-	-	-
		-	-	-
B4 Assets retained for the charity's own use	Details	Fund to which asset belongs	Cost (optional)	Current value (optional)
		-	-	-
		-	-	-
		-	-	-
		-	-	-
		-	-	-
		-	-	-
		-	-	-
		-	-	-
B5 Liabilities	Details	Fund to which liability relates	Amount due (optional)	When due (optional)
		-	-	
		-	-	
		-	-	
		-	-	
		-	-	
Signed by one or two trustees on behalf of all the trustees		Signature	Print Name	Date of approval
		#VALUE!	Aled Owen	05/07/2025

--	--	--

: Aled Owen <[info@snowdoniaslatetrail.org](mailto:info@snowdoniaslatetrail.org)>; [aledocwm@btinternet.com](mailto:aledocwm@btinternet.com)

**Subject:** Re: Llwybr Llechi Eryri



Jyst rhag of bod y neges wedi mynd ar goll

On Tue, 27 May 2025 at 12:37, Alun Griffiths <[ebostfi67@gmail.com](mailto:ebostfi67@gmail.com)> wrote:  
Helo Aled,

Wrthi yn cwblhau gwirio y cyfrifon. Pob dim yn edrych yn gret. Fe rwyf yn cadw petha yn daclus iawn. Fe roeddat wedi sylwi bod y £62.72 o'i le. Markel Internation yw hwn ar y mantolen banc ar 1/10/24. Fe rwyf wedi cofnodi hwn yn yn Ledger 24-25 fel Insurance £164.64 a Worker Project £62.72. Hyn yn iawn. Ond, wrth edrych ar y TAB Account 24-25 rwyf wedi cynnwys £62.72 o dan prosiect Dolennu (a heb tynnu y £62.72 o Worker Project). Felly rwyf wedi cofnodi dau £62.72 yn lle un. Hyn ddim yn broblem ogwbl ond gan ei fod yn wariant Restricted, well i ti gadarnhau y prosiect gorau i egluro y gwariant yma.

Gobeithio bod hyn yn gwneud synnwyr (??/!!). Os wyt eisiau sgwrs sydyn i'w drafod, coreso i ti ffonio fi 07939029092 pam yn gyfleus.

Cofion  
Alun